



# S c r i b b l i n g s

... from the Rocky Mountain Philatelic Library

Sherrí Soraci-Jennings, Librarian

Vol. 32 - No. 5

2038 South Pontiac Way, Denver, CO 80224-2412

September / October 2024

www.rockymountainphilateliclibrary.org

(303) 759-9921

Email: rmpldenverco@gmail.com

## IN THIS ISSUE

### **How a Stamp Show Saved My Life**

by Eddie Hackstaff ..... 1

### **President's Message**

by Tonny Van Loij ..... 2

**General Notices** ..... 3

### **Curtis Jenny Plane on Display at Denver International Airport**

by Charlie Freise ..... 5

### **RMPL Video Productions**

by Sergio Lugo ..... 7

### **Second Saturday Programs**

#### **"Fake and Altered US Postage Stamps"**

by Jerry Hagar ..... 8

#### **"Exhibiting Internationally"**

by Tonny Van Loij ..... 8

### **19th Annual Large Lots Auction Notice**

..... 8

### **Covering the World**

by John Bloor ..... 9

### **Young Collectors Corner**

by Charlie Freise ..... 10

### **New Publications for our Members**

..... 11

### **RMPL Board Minutes - July 18, 2024**

..... 13

### **RMPL Approved By-law changes**

..... 14

**Librarian's Notes**..... 14

**Donations**..... 15

**New Members** ..... 15

**Scheduled Library Events**..... 16

# "How a Stamp Show Saved My Life"

by Eddie Hackstaff

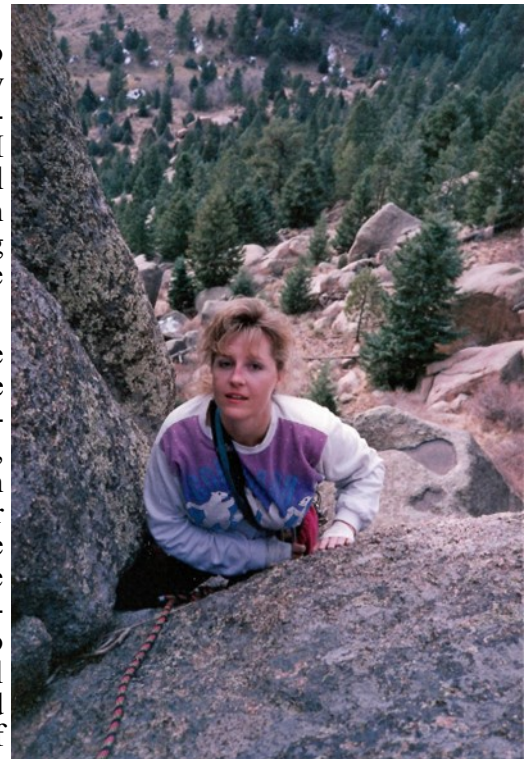
The day was Saturday, May 18, 1996 and the 47<sup>th</sup> annual Rocky Mountain Philatelic Exhibition (ROMPEX) was taking place. The show would later become the Rocky Mountain Stamp Show (RMSS) that we all know and love today. This was the first year I exhibited at a national level show. It was also be the day that a stamp show saved not only my life, but also the life of my wife, Sheena (*figure 1*).

Originally, we had planned to go rock climbing on this Saturday but I could not wait to see if I received a ribbon for my exhibit. I assured Sheena that we would still have time for a long afternoon on the cliffs. We loaded the climbing gear in the Jeep and headed to the stamp show.

Upon arriving at ROMPEX, we went straight to my single-frame exhibit and there it was, a silver-bronze ribbon. Looking back now, I think the judges went easy on me as a novice exhibitor. After visiting my exhibit, we felt there was time to do a quick run by the dealers in search of mountaineering expedition material. Rarely do dealers carry this type of material and I thought we might spend about 30 minutes visiting some of the dealers.

The first dealer we visited said that he had a unique postcard from the 1924 Mount Everest expedition, but he would need time to find it. Going from dealer to dealer it seemed like everyone had mountaineering expedition material. This was taking time, much more time than expected. The material was exciting and my wife graciously agreed to continue the search

Returning to the first dealer we saw he had a full table. My thought was that we should leave, most likely he had the common 1924 Mount Everest expedition postcard with the red "Advertising" marking.



*figure 1 - Sheena Hackstaff, the author's wife climbing at the planned location a few years earlier.*

*continued on page 4*

# Scribblings

## Newsletter of the Rocky Mountain Philatelic Library

2038 South Pontiac Way  
Denver, CO 80224

Phone: (303) 759-9921

Email: [rmpldenverco@gmail.com](mailto:rmpldenverco@gmail.com)

Web Page: [www.rockymountainphilateliclibrary.org](http://www.rockymountainphilateliclibrary.org)

Instagram: The RMPL

Hours: Monday - Saturday 10:00 AM - 2:00 PM

Thursday 5:00 - 8:00 PM

Closed Sundays and Holidays

### Librarian

Sherri Soraci-Jennings

### Library Officers

President:	Tonny Van Loij
Vice President:	Jim Kilbane
Operations Manager:	Steve Schweighofer
Stamp Manager:	Dasa Metzler
Corresponding Secretary:	Paul Domenici
Recording Secretary:	Regina Domenici
Treasurer:	William Douglass
Bookkeeper:	Linda Veres

### Directors

Eric Carlson	Charlie Freise
Rod Haenni	Gary Withrow

### Scribblings Editor

Charlie Freise

### Copy Editors / Proofreaders

John Bloor	Roger Rydberg
Paul Domenici	Steve Schweighofer
Sherri Soraci-Jennings	

*Scribblings* is published bimonthly by the Rocky Mountain Philatelic Library. The RMPL is a chartered Colorado nonprofit corporation and is an IRS-designated 501(c)(3) charitable organization. Membership subscriptions over that for the contributing membership, and donations of appropriate philatelic materials, may be deductible for US income tax purposes. The Library is a volunteer organization. Financial donations, philatelic books, stamps, supplies and donations of your time are welcome. The Library Bylaws are available for review at the Library or you may obtain a copy upon request.

A basic membership with the RMPL is \$25 per year and includes book checkout privileges and six issues of *Scribblings*. Call for more information.

Officers and Directors may be contacted through the RMPL.

## From the Desk of the President -

by Tonny Van Loij



Well, the dust has settled after the Rocky Mountain Stamp Show. The silent auction was highly successful and a special thank you goes out to Paul and Gary along with all the other volunteers involved with the auction.

The Library auctions are one of our main sources of operating revenue. Your participation and bidding help to keep the doors of the Library open. We hope to have the same success with the upcoming Large Lots auction in October.

When this issue of *Scribblings* reaches you, I should be back from my trip to Estonia. I was invited to exhibit my Thurn and Taxis material at the Mare Balticum International Stamp Exhibition in Tartu, Estonia. During the October 2024 Second Saturday program I will let you know how I did and provide details of the adventure.

The Library is looking for additional storage space and our efforts at building an addition are hitting a proverbial bureaucratic brick wall. A significant expense for the Rocky Mountain Stamp Show is the year-round storage of more than 400 exhibit frames. The storage company has dramatically increased their fees over the past couple of years. Ideas and suggestions are always welcome. In the meantime, Steve Schweighofer is busy researching alternative storage solutions.

A large number of philatelic publications and some new Stanley Gibbons and Michel catalogs have been added to our shelves. Members are invited to stop by and "check-out" the new additions.

Stay cool and healthy during the hottest days of summer, stop by and spend some time at the Library. Share some philatelic tall-tales with your stamp collecting friends, attend the Second Saturday meetings and join one of our many clubs.

Tonny Van Loij  
President

## INCLEMENT WEATHER

**In the event of inclement weather the Library may close unexpectedly. Prior to venturing out, particularly when it is snowing, it is advisable to call ahead to make sure the Library is open.**

## GENERAL ANNOUNCEMENTS

The RMPL Auction team sends periodic emails related to upcoming auctions, updated bidding lists and letting you know of recent auction changes. If you have not received these messages please check your spam folder. The emails are from [RMPLAuctionManager@gmail.com](mailto:RMPLAuctionManager@gmail.com) and are an inexpensive way of communicating with the membership.

Please be assured the Library will never release your email address to any outside organization.

### CHERPEX STAMP SHOW

The Cherrelyn Stamp Club is proud to host the annual Cherpex Stamp Show.

**September 13<sup>th</sup> and 14<sup>th</sup>, 2024**

**Friday: 10 AM - 6 PM**

**Saturday: 9 AM - 4 PM**

**Jefferson County Fair Grounds  
15200 W. 6th Ave.  
Golden, CO 80401**

**For additional information contact  
Carol Mobley at:  
[camobley@aphermeranet.com](mailto:camobley@aphermeranet.com)**

### WYPEX 2024

**Sponsored by  
the Cheyenne Philatelic Society  
October 26<sup>th</sup> and 27<sup>th</sup>, 2024**

**Saturday: 9 AM - 5 PM**

**Sunday: 9 AM - 4 PM**

**Red Lion Hotel  
204 West Fox Farm Road,  
Cheyenne, WY 82007  
10+ dealers and exhibits**

**Cheyenne Philatelic Society  
3rd Wednesday, 7:00 PM  
Municipal Building, 2101 O'Neil Ave., Rm. 122  
Cheyenne, WY 82001**

**Contact: Marc Anderson at  
[wyostampguy@gmail.com](mailto:wyostampguy@gmail.com)**

### RMPL Volunteer Dinner

**December 7, 2024**

**Additional information on the time,  
location and menu will be provided in  
the mailed invitation.**

**Invitations to Library volunteers will  
be mailed in late October or early  
November.**

### 3<sup>rd</sup> Annual Denver Stamp Club Auction

**Saturday,  
November 23, 2024**



**Location:** Rocky Mountain Philatelic Library  
2048 S. Pontiac Way,  
Denver, CO 80224

**Viewing:** 9:00 AM to 12:00 PM

**Pizza Lunch:** 12:00 PM to 12:30 PM

**Auction:** 12:30PM to 4:00 PM

125+ lots donated by members to promote club activities. US and Worldwide stamps and covers, collections, ephemera and literature.

All proceeds are used in support of club initiatives. The auction is open to all members and non-members. Everyone is welcome to participate.

continued from page 1



figure 2 - rare 1924 "Main Base Camp" marking on card.

I had a few of these in my collection. The dealer said he would take the time to dig through his inventory to find the postcard and I had promised to come back, so we waited.

When the dealer finally had time to show me the card it wasn't what I expected. The postcard was from the 1924 Mount Everest expedition, but it was one of the rarest of the expedition markings, the "Main Base Camp" marking (figure 2). When he told me the price, I was shocked and quickly paid. These cards are rarely seen in auctions, I was now a proud owner of one. Needless to say, the stamping day was finished.

It was in the early afternoon when my wife and I left the show. In the best scenario we would not get to the cliffs until after 3:00 PM. My wife and I resigned ourselves to a missed day at the cliffs, but I had a great day of stamping, so it had been worth it. As we walked to the car, we looked west. There was a dark brown cloud building over the foothills southwest of Denver.

My wife and I had planned climbing in an area called "Top of the World." This is on the east side of Raleigh Peak. The area is one of my favorites for having multiple single pitch routes (less than 150 feet) ranging from somewhat easy to difficult traditional climbing. The hike into the area is difficult with no trails and packs laden with heavy climbing gear.

This was May 18, 1996, the day of the Buffalo Creek wildfire. This area was decimated by the wildfire. As my wife and I look back on this day we always wondered, when would we have noticed the fire?

On the east side of the peak, we would not have seen the smoke until it was overhead. Several campgrounds were in the area, smelling smoke was not uncommon. The question comes down to how soon would we have noticed the seriousness of the situation? By the time we realized there was trouble we would have had to hike the difficult terrain west towards the fire. Once we reached our vehicle it would have been a slow drive out, again heading towards the fire.

If we were unable to get out of the area by vehicle, could we have navigated the miles of extremely rough unfamiliar terrain traveling east on foot? Could we have outrun the fire and reached the ghost town of South Platte? There is an old bridge crossing the South Platte River and most likely we might have reached help.

Today, my wife and I still think back on that day and talk about all of the "what-ifs." Generally, we agree, had we gone climbing that morning instead of going to the stamp show things would not have turned out so well. Odds would have been stacked against us that day.

Never before, past or present, have I come across so much mountaineering expedition material at a stamp show. In hindsight, it feels as though someone did not want us to go climbing on that day. The rare Mount Everest expedition postcard purchased at ROMPEX that day is still proudly displayed in my gold medal single-frame exhibit.

Every time I stop and take a moment to look at the card, I recall the day I purchased it was the day a stamp show saved the life of my wife and me.

*Eddie Hackstaff is a volunteer at the Rocky Mountain Philatelic Library and frequently works at the front desk. He has been a collector of Mount Everest expedition material for many years and has some fascinating stories to tell.*

# Curtiss Jenny Plane on Display at the Denver International Airport

by Charlie Freise

It is difficult to find a collector who has not heard of the “up-side-down” airplane stamp. This is perhaps the crown jewel in United States philately and the stamp is proverbially the “crown jewel” to a United States postage stamp collection. Who does not remember hearing of the story of William Robey walking down to the Post Office and purchasing the only known sheet of inverted 24¢ Curtis Jenny air mail stamps on May 14, 1918 (*figure 1*). Robey eventually sold the sheet of stamps to Eugene Klein for \$15,000. Klein sold the sheet to “Colonel” Edward Green and he proceeded to break the sheet of stamps up into singles, pairs, blocks and a single plate block. Before doing so, he placed a small pencil mark number on the reverse of each stamp. This identified the plate position of every stamp from the sheet and over the years has proven to be an invaluable tool in authenticating the individual stamps. We know the history behind the famous “Inverted Jenny” stamp, but do we know the history of the plane featured prominently on the stamp?



*figure 1, United States, 1918, Scott #s C1, C2, C3 and C3a.*

The biplane was built by the Glenn Curtiss Aeroplane Company of Hammondsport, New York, for the United States Army and Navy and intended as training aircraft. Curtis took the best features of his model J and model N trainers and began producing the JN series of aircraft in 1915. The nickname “Jenny” was derived from the model number assigned to the plane, JN-1. Very few of the JN-1 and JN-2 models were produced. The plane received an alpha-numeric label based upon the model of the plane, over the plane's lifetime there were a total of 24 model numbers assigned as well as 7 model numbers assigned to special planes.

In July 1915, the 1<sup>st</sup> Aero Squadron of the US Signal Corps, Aviation Section, located in San Diego, received the first eight JN-2 models. In August 1915, the squadron was transferred to Fort Sill, Oklahoma, to work with the Field Artillery School. One of the eight planes crashed resulting in a fatality. The squadron pilots met with the squadron commander, Captain Foulois, and reported the JN-2 planes as unsafe due to low power, heavy weight, shoddy construction, lack of sta-

bility and an overly sensitive rudder. When a second accident occurred in September the remaining six JN-2 planes were grounded.

Two newly modified JN-3s were delivered to the squadron in late 1915. The six remaining grounded JN-2 aircraft were upgraded and in March 1916 all eight JN-3 planes were deployed to Mexico. They provided aerial observation support during the Pancho Villa Expedition of 1916 - 1917 (*figure 2*). After the successful deployment of the JN-3 model aircraft the Curtiss company produced the JN-4 model.

The US Army placed orders for the new JN-4 model and the Royal Flying Corps of England also placed an order for the JN-4 plane to be based in Canada. The British used the JN-4 in Canada and many Royal Flying Corps pilots earned their wings on the aircraft at Ontario and later at Camp Taliaferro, Texas.

At the height of World War I, the Curtiss company employed over 3,000 workers at its Hammondsport facility. The company had expanded and moved to another facility in Buffalo, New York, due to increased orders for aircraft. By the end of the war the Curtiss production facility in Buffalo was the largest in the world, employing over 18,000 workers and producing more than 10,000 aircraft by the end of the war. At one point, the facility was producing over 100 aircraft a week. The demand for the JN-3 and JN-4 model planes from November 1917 through January 1919 was so great the company required the assistance of six additional manufacturers. Production of the aircraft continued until 1927, most of the final orders for the plane were for civilian markets in the United States and Canada. The “Jenny” remained in service with the US Army until 1927.

Although the “Jenny” training aircraft was never intended to serve in combat the plane proved to be highly versatile. The plane could be, and was, modified to take on additional roles. The removable turtle deck behind the cockpit could allow room to carry a stretcher or additional supplies. These modified JN-4 planes became the first aerial ambulances and carried out this role during the Pancho Villa Expedition, World War I and in later years. (*figure 3*). The US Navy used a highly modified version of the JN-4 as a floatplane.



*figure 2, 1916, fully restored Curtiss Jenny JN-4D currently on display at Fort Rucker, Alabama. This version of the plane saw service during the Pancho Villa Expedition 1916 - 1917.*

*continued on page 6*

continued from page 5



figure 3, San Diego Air and Space Museum Archives. Converted JN-4 ambulance, operated by the Camp Taliaferro medical teams, around 1918.

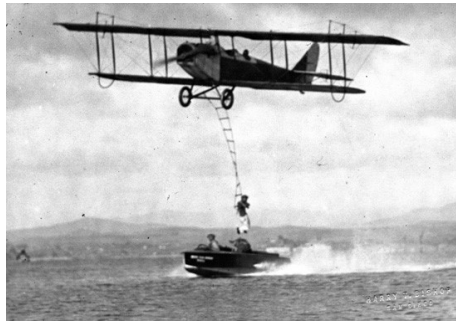


figure 4, San Diego Air and Space Museum Archives. One of the many daredevil stunts performed by JN-4 pilots was to work with a "wing walker".



figure 5, 1918 Curtiss Jenny JN-4D on display at the Denver International Airport. Photograph by Keith Schengili-Robert, March 6, 2007.

It was essentially a different airframe and was assigned the JN-9 model number. The first of the JN-9 float-planes were ordered by the US Navy in 1918. The majority of JN-4 models were unarmed, some were modified with machine guns and bomb racks for advanced training. Deployment was limited to North American bases; none of the planes saw combat during World War I.

After World War I, thousands of the planes were sold on the civilian market. Some were sold in their original packing crates for as little as \$50.00. Charles Lindbergh purchased one of the JN-4 model planes in May 1923.

Between 1917 and 1919 the JN-4 accounted for a number of significant firsts in aviation history:

1. The modified JN-4s were the first aerial ambulances and carried out this role during the Pancho Villa expedition of 1916-1917, World War I and later years.
2. The first plane-to-plane communication and plane-to-ground communication by radiotelephony at Langley Field in Hampton Virginia in July and August 1917.
3. Flying the first US Air Mail for the Post Office in May 1918.
4. The JN-4 is credited with what is believed to be the first successful dive bombing. In early 1919, a USMC JN-4 was modified by the pilot during the United States occupation of Haiti. The plane basically disintegrated on the pull-out but additional modifications were made to the plane and it was used successfully in training pilots for dive bombing operations.

In 1918, The United States Post Office used military pilots to deliver airmail until their own pilots were hired and trained. The planes used by the Post Office had a top speed of about 80 mph, with a range of about 175 miles and a ceiling of about 11,000 feet. The front seat was removed to carry mail bags and a set of extra fuel tanks were strapped together to increase travel distance. The Jenny could carry a little less than 300 pounds of mail per trip.

Commercial flying was not regulated after World War I. Pilots found the stability and slower speed of the Jenny perfect for stunt flying. The plane heralded in the era of "barnstorming" and aerobatic displays. The plane remained popular with stunt pilots between World Wars. (figure 4).

A fully restored Curtiss Jenny JN-4D (figure 5) is on display at Denver International Airport. The plane was restored by the Antique Airplane Association of Colorado.

*This article was written at the suggestion of Paul Albright, long time member of the RMPL. The RMPL has more than 150 publications (books, catalogs, articles and pamphlets) referencing United States airmail, airmail stamps, aerograms and airmail postal history. The Rocky Mountain Aero & Astrophilatelic Club meets regularly at the Rocky Mountain Philatelic Library. Stop by the Library and meet some new friends who share your interest in aero philately.*

Sources:

National Postal Museum

*Curtiss Jenny airplane on display at Denver International Airport, Linns Stamp News, by Jay Bigalke, July 2, 2024.*

Donald, David, ed. *The Encyclopedia of World Aircraft*. London: Aerospace Publishing, 1997.

Hurd, William W. and John G. Jernigan. *Aeromedical Evacuation: Management of Acute and Stabilized Patients*. New York: Springer Publishing, 2002.

Larson, Lt. Col. George A., USAF (Ret.). "Hunting Pancho: The 1st Aero Squadron's Air Operations in support of the Army's 1916 punitive expedition." *Air Classics*, Volume 40, no. 6, June 2004.

Roseberry, C.R. *Glenn Curtiss: Pioneer of Flight, A Biography*. Garden City, New York: Doubleday & Company, 1972.

Chester, Jim, ed. "Curtiss JN-4 'Jenny'." *Biplanes, Triplanes and Seaplanes* (Aviation Fact File). London: Grange Books plc, 2004.

# RMPL VIDEO PRODUCTIONS

by Sergio Lugo and the RMPL Video Team

The RMPL Video Production Team has been very busy over the past few months. Five new video productions have been added to the Library and are available for viewing on YouTube or through the Library website.

**1. Venezuela 1932-34 Air Mail Stamp Issue Using Winchester Security Paper** - RMPL Video Production, 26 minutes, Author and Host: Sergio Lugo.

<https://www.youtube.com/watch?v=9vaYb0YfDOU>



This program is an introduction to a specific niche of Venezuelan aero-philately focused on the use of a single-type of paper which may be unique to the stamp collecting world. It illustrates the stamps of this issue, as well as used examples of the limited mailings of the issue in the 1930s. Reference resources are limited and unresolved questions without answer abound on the material.

**2. How Pike, Long and the Spanish Put Colorado on the Map** - RMPL Video Production, 54 minutes, Author and Host: Wesley Brown.

<https://www.youtube.com/watch?v=etFSxYyMW-k&t=1563s>



Originally presented via Zoom, the program provides a fascinating overview of how Colorado came to be. Wesley's overview is a historical one, integrating his comprehensive interests in cartography with those of his philatelic pursuits. This detailed presentation takes the viewer through the development of map-making for an unknown section of the far West from the mid-17<sup>th</sup> century through modern times. *Questions and answers were integrated into this presentation as recorded by Gary Withrow and edited by Joe LaNotte.*

**3. Put Some ZIP Into Your Collection** - RMPL Video Production, 26 minutes, Author and Host: Daniel Culbert.

<https://www.youtube.com/watch?v=WFw3tHBx0jI&t=122s>



This interesting program provides an overview of the whys and wherefores of the US Mr. ZIP program. Daniel provides a delightful insight into how the Mr. ZIP program came about over the course of 50 years of American postal history. He illustrates the

various forms of Mr. ZIP; illustrates the original form of the digital numbering system, and explores digital postal code numbering systems for several nations. Please take the time to learn and enjoy something about which all of you have seen, but probably gave little thought to over the years.

**4. Airline Baggage Labels** - RMPL Video Production, 42 minutes, Author and Host: Daniel Kusrow.

<https://www.youtube.com/watch?v=tbBBzewrwBU>



This is an extraordinarily informative video produced by Daniel Kusrow. He has been collecting airline baggage labels since childhood and has a collection of well over 10,000 labels. Daniel integrates the history of this collectible area with the air transport evolution of baggage. He manages to display many of the creative designs and dynamics of baggage labels, particularly as they relate to early aerophilately in the 1920s to 1940s. A wonderful insight into one of the little-known niches of philatelic ephemera.

**5. Postal Service and Communication in Nazi-Occupied Norway 1940 - 1945** - RMPL Video Production, 65 minutes, Author and Host: Evan Brande.

<https://www.youtube.com/watch?v=Z5FkH0fAWL0>



Evan Brande developed this 2nd Saturday Program related to the Norwegian resistance to the Germans during World War II. The presentation delves beyond the generalities frequently encountered regarding the German resistance and explores through photos, documents and postal history the very real specifics of the Norwegian resistance from 1941 through 1945. Evan's family was closely connected with Norwegian political and military patriots who used their influence to encourage resistance fighters, ordinary folks, and politicians. Those connections helped pave the way for this superb political and postal history view of the period.

Video production is performed by RMPL volunteers who donate their time and talents. The group is continually searching for folks who would like to help in the production of videos. If sharing your knowledge is not something you are comfortable doing, you might think about supporting the video production effort.

# ***Second Saturday Programs at the Library***

Second Saturday programs are sponsored by the RMPL and attract a friendly group of folks who are interested in a specific subject, or who are interested in learning more about an area of philately that may be new to them. The Second Saturday programs are presented via Zoom. **Contact Jim Kilbane, [aurora\\_80017@yahoo.com](mailto:aurora_80017@yahoo.com), for an invitation to the next Zoom meeting or if you are interested in presenting a program.**

**September 14, 2024 - 9:00 AM**

**Presenter: Jerry Hagar**  
**"Fake and Altered US Postage Stamps"**

Jerry will present various Washington / Franklin stamps purchased at auction. He will have the audience help him decide if the stamps are real, fakes, or have been altered.



Scott #377 and 378



**October 12, 2024 - 9:00 AM**

**Presenter: Tonny Van Loij**  
**"Exhibiting Internationally"**

Tonny has exhibited in Bangkok, Thailand, and Tartu, Estonia over the past year. He will discuss his experiences and the ups and downs of exhibiting in Europe and Asia.



Tartu, Estonia, town square.

## **19th Annual RMPL Annual Large Lots Auction** **A LIVE AUCTION**

**Presented by The Rocky Mountain Philatelic Library**

**Location: Meeting Room**  
**2048 S. Pontiac Way, Denver, CO 80224**

**Beginning at 11:00 AM**  
**Saturday, September 28<sup>th</sup>, 2024**

**NO BUYERS  
 PREMIUM**

**OVER 270  
 LOTS!**

This auction features 274 lots of stamps or covers in albums, on album pages, in stock books, commemorative or thematic collections, bulk cover lots, miscellaneous philatelic material, supplies (assorted empty albums and pages, stamp mounts, etc.), ephemera and philatelic books.

**The catalog and scanned images of lots are available for viewing anytime at:**  
**[www.rmplauctions.org](http://www.rmplauctions.org)**





# Covering the World



## A Postal Card From Hawaii

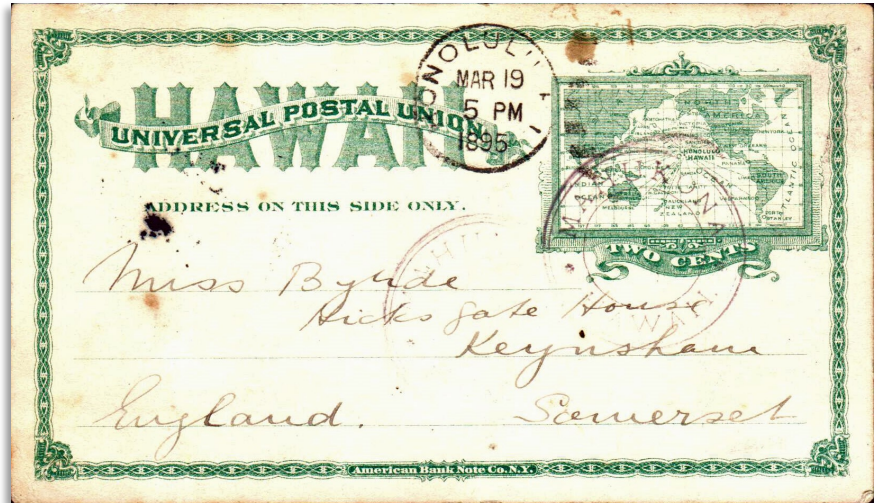
by John H. Bloor

The cover for this issue (*figure 1*), a postal card (Scott Hawaii UX9; UPSS S9), is from Mahukona, in the North Kohala District on the Big Island (aka Hawaii island or just Hawaii, which can be confusing; see *maps 1 and 2*). When I moved to Hawaii in 1969, I stayed with the parents of a friend of mine. They lived in Hawaii, also in the North Kohala District, so I have a certain affection for the area. It was a wonderful introduction to Hawaii.

Mahukona was a small town on the north shore of Hawaii (*map 2*). At its peak the town had about 40 families. It was abandoned in the 1950s. The Post Office existed from 1881 - 1900. The town has a sheltered port and was a terminus for the Hawaiian Railroad Company. This railway, the first in Hawaii, opened in 1883 to carry sugar cane from the six Kohala sugar plantations to the steamer Likelike, to take it elsewhere for processing. Prior to the railroad, bullocks were used to haul heavy wagons to the coast for transfer to flatboats. This was hard, dangerous work, especially when the surf and waves were high. Eventually, trucks and better roads replaced the railroad, which ceased operations on October 29, 1945.

The card was issued in 1894 while the islands were a republic. The indicium shows a Mercator projection of the Pacific. The purple Mahukona cancel is faint with an illegible date. This postmark was used from October 1882 until May 1896; purple strikes are known from December 1887 until March 1895. The Honolulu transit cancellation clearly shows a date of March 19, 1895 so the purple Mahukona cancel is a very late usage. Presumably the card reached England although there is no receiving cancel on the front or back. Cancels on covers originating in Mahukona are less common than these cancels used as transit markings. Also, the card is addressed to England, an unusual destination for a letter from a small, rural town in Hawaii.

The rate of 2¢ is probably correct. This is the UPU postal card rate from Hawaii to the United States and from Great Britain to the United States in 1895. It is thus



*figure 1, Hawaiian postal card, Scott #UX9, UPSS #S9.*

plausible that the same 2¢ would carry the card all the way to England.

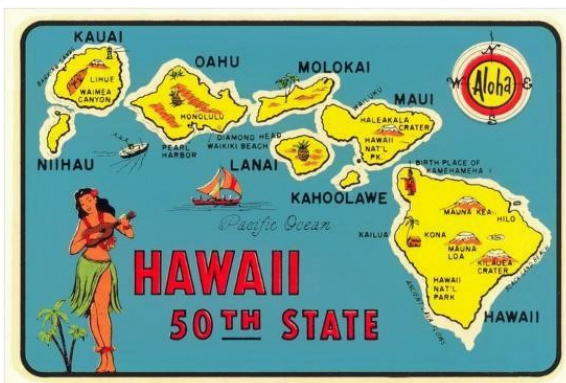
That's all for this issue. Send me your favorite cover and some information about it for the next issue of *Scribblings*.

References:

*"The Postal Stationery of Hawaii,"* by the Hawaii Postal Stationery Study Group (1982)

*"Sugar and Steam in Kohala,"* by Sophia Schweitzer, *Coffee-Times-No46\_1998\_January\_S.pdf* (shopify.com) Pp 24-29.

*"U.S. International Postal Rates, 1872-1996,"* by Anthony S. Wawrukiewicz and Henry Beecher (1996)



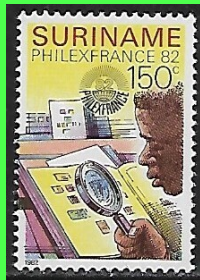
*left, map 1, the Hawaiian Islands*



*right, map 2, map of Hawaii*

# Young Collectors Corner

by Charlie Freise



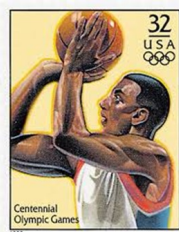
Visit [CYPHERStampClub.com](http://CYPHERStampClub.com) to learn more about stamp collecting.

## Olympic Stamps

The first modern Olympics were held in Athens, Greece, in 1896. The five Olympic rings represent the five inhabited continents (Africa, the Americas (North and South), Asia, Europe and Oceania). Greece issued the first set of commemorative stamps to help finance the event. The first Winter Olympics were held in Chamonix, France, in 1924. Since 1896, more than 26,000 stamps have been issued commemorating the Olympics.



An Olympic-themed program was presented to the children at the July meeting followed by a 12-event modified Olympics (high jump, long jump, discus, shot put, weight lifting etc.). At the end of the event club members received a ribbon and gold medal. Here are a few pictures of Kaia and Aria participating in some events and the ceremony.



To the left are 12 Olympic themed stamps. Can you identify the sport and then find it on hidden word search below? Answer key is on page 15.

D	A	S	C	I	T	S	A	N	M	Y	G	E	D
E	H	P	G	C	C	O	S	E	B	W	M	I	I
L	G	N	I	C	N	E	F	A	S	Q	S	A	S
S	T	U	P	T	O	H	S	O	P	C	D	U	W
B	U	S	M	C	Y	E	C	K	U	H	G	N	I
O	O	A	W	L	B	C	R	S	A	E	N	M	M
B	Z	I	P	A	E	G	I	D	V	T	I	B	M
A	S	J	L	R	W	X	N	A	Y	O	I	W	I
L	D	L	K	C	Y	C	L	I	N	G	K	N	N
L	L	A	B	T	E	K	S	A	B	P	S	E	G

# New Publications for our Members

## UNITED STATES

*Bartels Catalogue of the Stamped Envelopes and Wrappers of the United States and Possessions, in two volumes, Vol. 1*, by J. Murray Bartels

*A Collector's Handbook for Hawaiian Town Postmarks: 1859 - 1900*, by Mark Inklebarger

*Edward H. Cushing: His Express and the Mail*, by Francis J. Crown, Jr.

*Elliott Perry-graphs: From the Westfield Peach Orchard [10¢ Jefferson 1870 - 1889]*, by Elliott Perry

*New York City Foreign Mail 1845 - 1878, Vol. 1 1845 - 1870 and Vol. II, 1871 - 1878*, by Nicholas M. Kirke

*The Territorial Post Offices of Arizona*, by Sheldon H. Dike

*Understanding the Grill Stamps of the United States*, by Jan Hofmeyr

*United States: Notes on the Bluish Paper Stamps of 1909*, by Winthrop S. Boggs

## NORTH AMERICA

*Canadian Roller Cancellations, 1894 - 1930*, by E. A. Smythies

*The Georgian Postage Stamps of Canada 1912 - 1936*, by The Capital Stamp & Stationery Co., Ottawa, Canada

*Lewis M. Ludlow Collection of Canadian Railway Cancellations and Related Transportation Postmarks*, by Lewis M. Ludlow

*Newfoundland 1897 Royal Family, Dead Letter Seal and Map Stamps (Exhibit)*, by John M. Walsh

*Newfoundland Postal History 1857 - 1899 (Exhibit)*, by Colin D. Lewis

## NORTH AMERICA (continued)

*A Pre-Confederation Postal History of Labrador (Exhibit)*, by Kevin N. O'Reilly

*Proof Strikes of Canada. Vol. I - XXXIX*, edited by J. Paul Hughes (There are 39 books, same title but different subtitles.)

## COLORADO

*The Battle of Beecher Island: Fought -- September 17, 18, 1868*

*Colorado Hi-ways and By-ways: Picturesque Trails and Tours*, by Marian Talmadge and Iris Gilmore

*History of Denver: With Outlines of the Earlier History of the Rocky Mountain Country*, by Jerome C. Smiley

## ASIA

*Imperial Russian Stamps Used in Transcaucasia, Part V: The Transcaucasian Railway*, by P. T. Ashford

## AUSTRALIA and OCEANIA

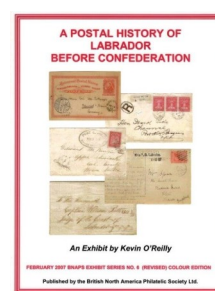
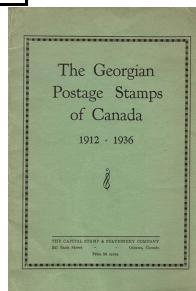
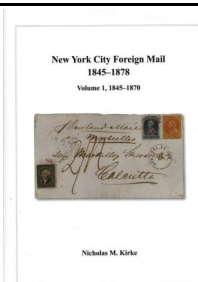
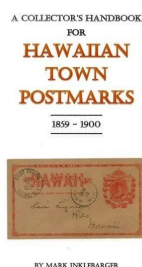
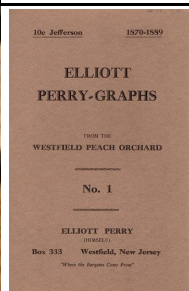
*Postal Stationery, 1911 - 1980, Including Australian Territories: Section 12 of the Australian Commonwealth Specialists' Catalog*

## EUROPE

*Arbeitsgemeinschaft Fiskalmarken in Bund Deutscher Philatelisten*

*Cancellation Checklist for the Hungarian Portion of the Austro-Hungarian Empire (1850 - 1871)*, by Thomas M. Tenczar

*Cancellation Checklist for Lombardy-Venetia (1850 - 1866)*, by Thomas M. Tenczar



# New Publications for our Members

## EUROPE (continued)

**Checklist of Austrian Town Cancels on the Stamps of the Austrian Empire (1850 - 1883).** Also includes *Liechtenstein*, edited by T. M. Gordon [pseud. of Thomas M. Tenczar]

**Checklist of Polish Town Cancels of the Stamps of the Austrian Empire (1850 - 1883).** (Also Includes Sections for *Bukowina and Silesia*), edited by T. M. Gordon [pseud. of Thomas M. Tenczar]

**EXPERT Billig's Grosses Handbuch der Falschungen, Lieferung, No. 33,** by Otto E. Stiedl and Fritz Billig

**Monografia Česko-Slovenských Znáмок: Díl XV. Poštové Pečiatky na území Slovenska od Roku 1752 do Roku 1918,** by Jozef Obert

**Monografie Československých Známeč: 5. Díl. SO 1920,** by Oldřich Tovačovský

**Monografie Československých a Českých Známeč a Postovní Historie - Pošte v Dobe Nesvobody: 11. Díl.II. Svazek. Posta v Ghettu Terezín,** by František Beneš

**Monografie Československých Znameč: Díl XIII. Ceska postovní razítka od nejstarsich dob do roku 1918,** by Emil Votoček

**Postal History of Norway,** by Edith M. Fisher

**Post Offices of Former Austrian Territories**

**The Czech Graphics Union: Typographic Plate Production Technologies and Practices as Revealed by First Republic Stamps,** by Mark Wilson

**The Postmarks of Cyprus 1971,** by Michael A. Poole

## MIDDLE EAST

**F. N. Farahbakhsh Catalogue of 1987: The Stamps of Iran Vol. II Pahlavi Reign,** by F. N. Farahbakhsh

**Farahbakhsh Catalogue of 1987: The Stamps of Iran Vol. III, Islamic Republic of Iran,** by F. N. Farahbakhsh

## MISCELLANEOUS

**Collecting Historical Documents: A Guide to Owning History,** by Todd M. Axelrod

**Illustrated Catalogue of Postage Stamps for the Use of Collectors,** by John Edward Gray

**Miracle, Tragedy and Mystery (Exhibit) by RMPL Young Stamp Collectors**

**The Postage-Stamp Collectors' Handbook: A Complete Descriptive Catalogue of all Postage Stamps Issued from 1840 to the Present Time,** by C. M. Seltz

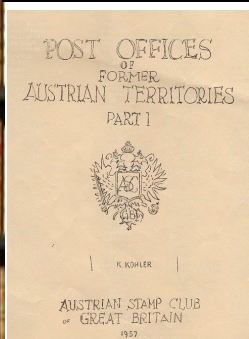
**The World Encyclopedia of Stamps & Stamp Collecting: The Ultimate Illustrated Reference to Over 3000 of the World's Best Stamps, and a Professional Guide to Starting and Perfecting a Spectacular Collection,** by James A. Mackay

**Standard Guide to Postage Stamp Collecting: Giving the Values and Degrees of Rarity,** by Bellars and Davie

**Stamps of the Steamship Companies: A Rough List,** by Frederick John Melville

## CINDERELLAS

**Priced Catalogue of the Local Postage Stamps of the World**



The Czech Graphics Union  
Typographic Plate Production  
Technologies and Practices  
As Revealed by First Republic Stamps  
Mark Wilson

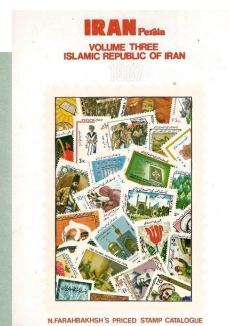
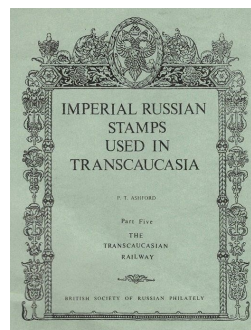


This day cover featuring the first four stamps issued from typographically produced forms. Registered lines are from the Prague-Old Town Office in Vienna, 19 December 1918. One 5 baček and a block of four 10 baček stamps from the Brno office, one with a registered mail label. All three cancelled with the use of the 'P' 121441 registration key of 1918.

The 'Headline' line represents the doorway to Czechoslovak typographically produced stamps. The stamp is adorned with the distinctive green characteristic of most Czechoslovak stamps and demonstrates that even the crude plate manufacturing process can support great beauty.



MONOGRAFIE  
ČESKOSLOVENSKÝCH  
ZNÁMEK



N. FARAHBAKHSH'S PRICED STAMP CATALOGUE

# RMPL Board of Directors Meeting

## Board of Directors Meeting July 18, 2024

The meeting was called to order at 2:58 PM

Board Members Present: Tonny Von Loij, Jim Kilbane, Eric Carlson, Steve Schweighofer, Gary Withrow, Charlie Freise, Paul and Regina Domenici. Attending via ZOOM: Bill Douglass. Absent: Rod Haenni, Visitors Bill Blankemeier, Ron Lampo

### Old Business

**The prior meeting minutes** were approved via email in May.

**Bill: Treasurer's report:** The latest financial statements were approved.

**Proposed By-Law changes regarding the Board elections/length of terms (Eric and Regina):**

Motions were approved to amend the By-Laws include:

1. Increase the total number of Directors from 4 to 6.
2. Directors and officers continue to serve for 3 years but with a limit of two consecutive terms.
3. Directors and officers may run for the same position again after one election cycle.
4. Stagger the number of positions open for election to promote bench strength.
5. The Director of Operations requires specific skills and will be an appointed rather than an elected position.

**Budget dollars for RMPL representatives to attend different shows to promote RMPL:**

A motion was approved to budget \$10,000 for three shows next year:

1. The Great American Stamp Show (GASS)
2. WESTPEX
3. Sarasota National Stamp Exhibition in Florida.

Representatives would promote the RMPL and encourage new membership with a portfolio of what RMPL has to offer, (research books, auctions, Youth club, scholarships, etc.) and how our dollars support the community.

**Restroom upgrades in the meeting room (Gary):** Received a bid to update the restroom in 2048. A mo-

tion was approved to hire a company called WWW at the cost of supplies plus \$250. (New paint, regrout tile, new sink, mirror, and commode). The bid to paint the west wall is pending.

### New Business

**May auction recap (Paul and Gary):** There was a total of 125 bidders, 26 were new, 45 were from out of state and there were 2 international bidders from Canada and Ireland. Of the 125 bidders, 96 won one or more lots. Gross sales were \$45,945 with a net profit of \$37,745. Because the auction benefits from the RMSS (Rocky Mountain Stamp Show), a motion was approved to donate \$2,000 to the RMSS for storage of the exhibit frames.

**Volunteer Christmas dinner and gifts (Paul):** The first Saturday in December is reserved for the volunteer Christmas party. Invitations will be sent to all volunteers and one guest. A motion was approved to dedicate \$6,500 for the volunteer Christmas party and gifts.

**New construction for additional storage (Steve):** There are multiple obstacles when considering building new storage space next to the meeting room due to the unusual configuration of the property. The current easements required by the county would constrain the building to a very narrow shape. The project is pending further investigation and other alternatives for increased storage will be examined.

**Special Delivery of Dreams Scholarship (Gary, Regina):** A motion was approved to add two additional \$2,500 scholarships targeted to 4-year college students.

The next meeting is September 19, 2024, at 3:00PM.

The meeting adjourned at 4:05 pm.

Respectfully submitted,

Regina Domenici

Recording Secretary

## APPROVED BY-LAW CHANGES REGARDING BOARD OF DIRECTORS ELECTIONS

The Board has determined that efforts to add new members are necessary for the long-term success of the Library.

As such the Board approved adding two Director positions to be appointed during 2024. The term length remains the same, (three years), but limits Officers and Directors to two terms. They may run for a Board position after the expiration of one term.

The Board developed a plan for staggered term lengths to allow for Board variation while maintaining continuity. (attached visual aid). To attain staggered election years, there will be a one-time alignment period where two officers and three directors will be in office for four years (2024-2027)

The Board determined the Director of Operations requires unique skills and the position should be appointed rather than elected.

Your support of this effort is appreciated, if you have any questions or issues, please notify the Board in writing by September 1, 2024.

<b>THREE YEAR TERMS</b>											
<b>One alignment term: two officers and two newly appointed directors will run 4 years *</b>											
	2024	2025	2026	2027	2028	2029	2030	2031	2032	2033	2034
<b>OFFICERS</b>											
President	elected										→
Cor. Sec.	elected										→
VP	elected			4 yr.*							→
Rec. Sec	elected			4 yr.*							→
<b>DIRECTORS</b>											
Director 1	elected										→
Director 2	elected										→
Director 3	elected										→
Director 4	elected			4 yr.*							→
Director 5	Appointed			4 yr.*							→
Director 6	Appointed			4 yr.*							→
Total positions each election yr.			5	5	0	5	5	0	5	5	
Treasurer	Appointed										→
Ops. Mgr.	Now Appointed										→

### NOTES FROM THE LIBRARIAN

Are you a cover collector? Do you prefer First Day Covers or beautiful cachets? Why not collect both?

We received a new book about Carol Gordon, a wonderful artist who produced unconventional cachets for the United States, Canada and the United Nations from 1980 - 2014. Her literary cachets alone are strikingly lovely. Included in the back of the book is a listing and census of Carol Gordon's nearly 400 cachets. The book was written, and extensively illustrated by Susan B. Jones. Susan is a world-class philatelist who collects not only First Day Covers but various topicals and she knows what she is writing about. Come in and "check the book out."

We received a donation of quite a few Stanley Gibbons catalogs for British possessions. We now

own almost every Stanley Gibbons catalog from the Leeward Islands to East Africa. British collectors must visit the library and see these gorgeous new catalogs.

In addition to the Stanley Gibbons catalogs we received new Michel catalogs as well as donations of United States Postal Guides and Directories of Post Offices from the early 1900s.

It is amazing how many new books and publications have been donated. All of these items are greatly appreciated.

Sherri Soraci-Jennings  
Librarian

## DONATIONS

The library thrives on the enthusiasm and generosity of its members. The following societies, clubs, and individuals made donations to the Library since the last donation listing. These donations were made from May 17, 2024 through July 16, 2024. Thank you!

### INDIVIDUAL DONATIONS

**Colorado Postal History Society  
United Postal Stationery Society**

Anonymous	Robert Ducharme	Robert Miller	Robert Silverstein
Michael Anderson	Ilona Dwoskin	Carol Mobley	Dale Smith
Wade Backus	Donald Evans	David Paddock	Richard Thomas
Stephen Bonowski	Mark Frank	Charles Peterson	Jack Van Ens
Marion Brewer	Marc Gonzales	Dennis Pinkerton	Chris Vaughan
Jill Broemmell	John Hayhurst	David Reitsema	Ray Vreeland
Celisa Bryant	Matthew Healey	Tom Schomburg	Deborah Will
Craig Buhlman	Charlie Johns	Stephen Schumann	John Will
Lewis Bussey	Jim Kilbane	Mike Schumar	Richard Winter
Warren Coteron	Stan Kliebenstein	Martin Severe	Rex Wright
Ernesto Cuesta	Michael Kluherz	Thad Shamburg	Lone Wulfsberg
Suzan Dentry	Bill Massman	Tim Shea	

### NEW MEMBERS

We extend a warm welcome to new members who have joined the library from May 17, 2024 through July 17, 2024.

<p><b>Robert Ablutz</b> <b>Ashlin Chavez</b> <b>Cooper Collins</b> <b>Aidan Corman</b> <b>Andrew Corman</b> <b>Armando Donatelli</b> <b>Lorenzo Donatelli</b></p>	<p><b>Rogert Flummerfelt</b> <b>Matthew Healey</b> <b>J. William La Rue</b> <b>Jacob Martinez</b> <b>Jalen Martinez</b> <b>Aria Mathur</b> <b>Kaia Mathur</b></p>	<p><b>Denise A. Morrison</b> <b>Katherine Schmider</b> <b>Thomas Schmider</b> <b>Tom Schomburg</b> <b>Michael S. Schwam- berger</b> <b>Richard Thomas</b></p>	<p><b>Don Todden</b> <b>Cynthia Turner</b> <b>Genevieve Turner</b> <b>Kayla Turner</b> <b>Art Vreeland</b></p>
---	---	---	--

**Please Note:** New members and membership renewals received after July 17, 2024, will be acknowledged in the next issue of *Scribblings*.

**Answer key to the Olympic stamp hidden word search on page 10.**

<b>Baseball</b>	<b>Discus</b>	<b>Shot Put</b>
<b>Basketball</b>	<b>Fencing</b>	<b>Skiing</b>
<b>Bobsled</b>	<b>Gymnastics</b>	<b>Soccer</b>
<b>Cycling</b>	<b>Ice Skating</b>	<b>Swimming</b>

D		S	C	I	T	S	A	N	M	Y	G		D	
E					C				B				I	
L	G	N	I	C	N	E	F	A	S		S		S	
S	T	U	P	T	O	H	S	O		C			W	
B						E	C	K	U		G		I	
O					B	C		S	A		N		M	
B				A	E						T	I	M	
			L	R								I	I	
		L			C	Y	C	L	I	N	G	K	N	N
L	L	A	B	T	E	K	S	A	B		S		G	

# Scheduled Library Events



The RMPL Operations Manager, Steve Schweighofer, maintains a calendar of reserved club times. Clubs should check the calendar regularly and notify Steve ([steve.schweighofer@comcast.net](mailto:steve.schweighofer@comcast.net)) of any updates or changes. Requests to reserve meeting space and time for philatelically related meetings other than those listed here must be approved and scheduled with Steve well in advance. Call the Library or the appropriate club to confirm the place and time.

**Hours of Operation:**  
 Mon - Sat: 10:00 AM - 2:00 PM  
 Thu: 5:00 - 8:00 PM  
 Closed Sundays and Holidays  
 Phone: (303) 759-9921  
 Email: [rmpldenverco@gmail.com](mailto:rmpldenverco@gmail.com)

## \*\*\*SEPTEMBER 2024\*\*\*

**Sep 2 Mon - Closed for Labor Day**  
**Sep 7 Sat** - meeting 10 AM  
 Scandinavian Collectors Club  
**Sep 7 Sat** - meeting 1 PM  
 Topical Philatelists In Colorado (TOPIC)  
**Sep 8 Sun** - meeting 1 PM  
 Denver Postcard Club  
**Sep 11 Wed** - meeting 7 PM  
 Denver Germany Stamp Club  
**Sep 12 Thu** - meeting 2 PM  
 Cherrelyn Stamp Club  
**Sep 13-14 Fri & Sat** - CHERPEX Stamp Show  
**Sep 14 Sat - 9AM**  
**Second Saturday at the RMPL**  
**Presenter: Jerry Hagar**  
**"Fake and Altered US Postage Stamps"**  
**Sep 14 Sat** - meeting 10:30 AM  
 Mexico/Latin America Club  
**Sep 15 Sun** - meeting 1 PM  
 Great Britain & Commonwealth Collectors Club  
**Sep 19 Thu** - meeting 3 PM  
 RMPL Board of Directors - visitors welcome  
**Sep 21 Sat** - meeting 9:30 AM  
 CYPHER-Young Collectors Stamp Club  
**Sep 23-27 Mon-Fri** - 10 AM - 2 PM  
 Viewing, large lots auction  
**Sep 25 Wed** - meeting 2 PM  
 Denver Stamp Club  
**Sep 28 Sat** - 11 AM 19th Annual Large Lots Auction

## \*\*\*OCTOBER 2024\*\*\*

**Oct 5 Sat** - meeting 10 AM  
 Scandinavian Collectors Club  
**Oct 5 Sat** - meeting 1 PM  
 Topical Philatelists In Colorado (TOPIC)  
**Oct 9 Wed** - meeting 7 PM  
 Denver Germany Stamp Club  
**Oct 10 Thu** - meeting 2 PM  
 Cherrelyn Stamp Club  
**Oct 12 Sat - 9 AM**  
**Second Saturday at the RMPL**  
**Presenter: Tonny Van Loij**  
**"Exhibiting Internationally"**  
**Oct 12 Sat** - meeting 10:30 AM  
 Mexico/Latin America Club  
**Oct 12 Sat** - meeting 12:30 PM  
 Rocky Mountain Aero & Astrophilatelic Club  
**Oct 13 Sun** - meeting 1 PM  
 Denver Postcard Club  
**Oct 19 Sat** - meeting 9:30 AM  
 CYPHER-Young Collectors Stamp Club  
**Oct 19 Sat** - meeting 1 PM  
 Colorado Postal History Society  
**Oct 20 Sun** - meeting 1 PM  
 Great Britain and Commonwealth Collectors Club  
**Oct 30 Wed** - meeting 2 PM  
 Denver Stamp Club

## MARK YOUR CALENDAR !

**CHERPEX Stamp Show - Sep 13 - 14, 2024**  
**19th Annual RMPL Large Lots Auction - Sep 28, 2024**  
**WYPEX - Oct 26 - 27, 2024**  
**3rd Annual Denver Stamp Club Auction - Nov 23, 2024**  
**RMPL Volunteer Dinner - Dec 7, 2024**