



S c r i b b l i n g s

... from the Rocky Mountain Philatelic Library

Sherri Soraci-Jennings, Librarian

Vol. 32 - No. 4

2038 South Pontiac Way, Denver, CO 80224-2412

July / August 2024

www.rockymountainphilateliclibrary.org

(303) 759-9921

Email: rmpldenverco@gmail.com

IN THIS ISSUE

Identifying the Chinese "Junk" Stamps of 1913-1933

by Charlie Freise 1

President's Message

by Tonny Van Loij 2

General Notices 3

Second Saturday Programs

"Maybe Snow Will Stay the Couriers From the Swift Completion of Their Appointed Rounds"

by Dr. Frank Scheer..... 4

"An Overview of Danish Bypost and Landpost Stamps"

by Jim Kilbane 4

19th Annual RMPL Large Lots Auction Notice

Winners of the 2nd Annual Special Delivery of Dreams Scholarship

by Regina Domenici 5

Librarians Notes 5

Covering the World

by John Bloor 12

2024 Rocky Mountain Stamp Show

by Charlie Freise 13

Young Collectors Corner

by Charlie Freise 15

New Publications for our Members

RMPL Board Minutes - May 16, 2024..... 18

Donations 19

New Members 19

Scheduled Library Events

..... 20

How to Identify the Different Printings of the Chinese "Junk" Stamps

of 1913-1933

by Charlie Freise



Note: There are more than 30 different publications related to Chinese Philately on the shelves at the Rocky Mountain Philatelic Library. Why not stop by the Library, expand your philatelic horizons and share your adventures and discoveries with others?

On October 11, 1911, following the revolution, China became a republic. Instructions were issued for the elimination of all references to the Imperial Government from official documents. During this confusing period some local postmasters took this order to include postage stamps. The postmasters used locally made chops to overprint stamps sold in their post offices, and in some cases the chops were used on mail passing through. The local overprints were not authorized, but were permitted until the Third Imperial Issue printed by Waterlow and Sons, Ltd. The stamps had a vertical "Republic of China" overprint, in carmine, blue, or black and were issued in the spring of 1912 (figure 1). It is important to note that fake overprints and forgeries exist.



figure 1:

left, China, Scott #126, 4¢ vermilion, 1909, Chinese Imperial Post.

center, China, Scott #150, 4¢ vermilion, 1912, Chinese Imperial Post, with black Maritime Customs Statistical Department, Shanghai, overprint.

right, China, Scott #164, 1¢ ochre, 1912, with carmine Republic of China Waterlow overprint.

Note: The characters of the Maritime Customs overprint are closer together and significantly different than the characters on the Waterlow overprint.

continued on page 6

Scribblings

Newsletter of the Rocky Mountain Philatelic Library

2038 South Pontiac Way

Denver, CO 80224

Phone: (303) 759-9921

Email: rmpldenverco@gmail.com

Web Page: www.rockymountainphilateliclibrary.org

Instagram: The RMPL

Hours: Monday - Saturday 10:00 AM - 2:00 PM

Thursday 5:00 - 8:00 PM

Closed Sundays and Holidays

Librarian

Sherri Soraci-Jennings

Library Officers

President: Tonny Van Loij
Vice President: Jim Kilbane
Operations Manager: Steve Schweighofer
Stamp Manager: Dasa Metzler
Corresponding Secretary: Paul Domenici
Recording Secretary: Regina Domenici
Treasurer: William Douglass
Bookkeeper: Linda Veres

Directors

Eric Carlson Charlie Freise
Rod Haenni Gary Withrow

Scribblings Editor

Charlie Freise

Copy Editors / Proofreaders

John Bloor Roger Rydberg
Paul Domenici Steve Schweighofer
Sherri Soraci-Jennings

Scribblings is published bimonthly by the Rocky Mountain Philatelic Library. The RMPL is a chartered Colorado nonprofit corporation and is an IRS-designated 501(c)(3) charitable organization. Membership subscriptions over that for the contributing membership, and donations of appropriate philatelic materials, may be deductible for US income tax purposes. The Library is a volunteer organization. Financial donations, philatelic books, stamps, supplies and donations of your time are welcome. The Library Bylaws are available for review at the Library or you may obtain a copy upon request.

A basic membership with the RMPL is \$25 per year and includes book checkout privileges and six issues of *Scribblings*. Call for more information.

Officers and Directors may be contacted through the RMPL.

From the Desk of the President - by Tonny Van Loij



With spring almost over and summer approaching, I hope we are finished with the snow and frost warnings. Hopefully, as the days get longer, we will all find some extra time to spend on our hobbies.

Over the past few months, we received several hundred national and international auction catalogs from the estate of Greg Frantz. Steve Schweighofer has been working countless hours sorting and shelving them alphabetically by auction house. Next time you visit the RMPL take some extra time and ask to view the extensive auction catalog holdings. Once you see the hundreds of linear feet of shelf space dedicated to the national and international auction catalogs, you will gain a greater appreciation of the work Steve has accomplished.

Paul and Gary have been working hard on the September auction. Paul is looking for several volunteers to assist in organizing, preparing and describing lots, as well as learning how to manage the auction process with the goal of eventually taking over as auction manager. The process of holding three auctions a year is time consuming and he can certainly use the help.

I am making the final arrangements to travel to Estonia. I received an invitation to exhibit my gold medal Thurn and Taxis exhibit at Mare Balticum 2024. A report about the show will appear in the September/October issue of *Scribblings*.

On a closing note, I thank all of the volunteers who made the 73rd annual Rocky Mountain Stamp Show a success. Attending the show and seeing the number of dealers and visitors gives assurance that the hobby is alive and doing well.

Tonny Van Loij
President

INCLEMENT WEATHER

In the event of inclement weather the Library may close unexpectedly. Prior to venturing out, particularly when it is snowing, it is advisable to call ahead to make sure the Library is open.

GENERAL ANNOUNCEMENTS

MEMBERSHIP RENEWALS



Beginning in 2024, membership renewal forms will not be mailed out with *Scribblings*. Members will receive renewal notifications as a separate letter with a preprinted return envelope for dues payment. This change will shorten the amount of time required for the mailing of *Scribblings* and eliminate the possibility of a renewal letter being

sent to someone other than the intended member.

Additionally, mailing labels have changed to include a member's renewal date in the upper right-hand corner of the label. This serves as a reminder when a member needs to renew. When payment for a member's renewal has been recorded, the renewal date on the mailing label will become the new renewal date.

Thanks for being a member of the RMPL!

Mile High Stamp Show (Denver Stamp Club)

Come out and show your support for the oldest stamp club in Colorado.

Friday, August 2nd 10:00 to 6:00
Saturday, August 3rd 8:00 to 4:00

Location

Veterans of Foreign Wars (VFW)
15625 West 10th Avenue
Golden, CO 80401

Free Admission - Free Parking

15 Dealers

Contact: Ken Luke at
Safetyluke@hotmail.com

CHERPEX STAMP SHOW

The Cherrelyn Stamp Club is proud to host the annual CherpeX Stamp Show.

September 13th and 14th, 2024

Friday: 10 AM - 6 PM

Saturday: 9 AM - 4 PM

Jefferson County Fair Grounds
15200 W. 6th Ave.
Golden, CO 80401

For additional information contact
Ken Luke at safetyluke@hotmail.com

WYPEX 2024

Sponsored by
the Cheyenne Philatelic Society
October 26th and 27th, 2024

Saturday: 9 AM - 5 PM

Sunday: 9 AM - 4 PM

Red Lion Hotel
204 West Fox Farm Road,
Cheyenne, WY 82007
10+ dealers and exhibits

Cheyenne Philatelic Society
3rd Wednesday, 7:00 PM
Municipal Building, 2101 O'Neil Ave., Rm. 122
Cheyenne, WY 82001

Contact: Marc Anderson at
wyostampguy@gmail.com

The RMPL Auction team sends periodic emails related to upcoming auctions, updated bidding lists and letting you know of recent auction changes. If you have not received these messages please check your spam folder. The emails are from RMPLAuctionManager@gmail.com and are an inexpensive way of communicating with the membership.

Please be assured the Library will never release your email address to any outside organization.

Second Saturday Programs at the Library

Second Saturday programs are sponsored by the RMPL and attract a friendly group of folks who are interested in a specific subject, or who are interested in learning more about an area of philately that may be new to them. The Second Saturday programs are live and via Zoom. *Contact Jim Kilbane, aurora_80017@yahoo.com, for an invitation to the next Zoom meeting or if you are interested in presenting a program.*

July 13, 2024 - 9:00 AM

Presenter: Dr. Frank R. Scheer

**"Maybe Snow Will Stay These Couriers
From The Swift Completion Of Their Ap-
pointed Rounds..."**



As the saying goes, "a picture tells a thousand words." Dr. Frank Scheer, curator of the Railway Mail Service Library, will use his research skills and reveal the tale hidden behind the image.

August 10, 2024 - 9:00 AM

Presenter: Jim Kilbane

**"An Overview of Danish Bypost and
Landpost Stamps."**

This presentation will be of the twelve cities and towns of Denmark that had local independent postal deliveries. The program will tell why, when and for how long these services lasted.



19th Annual RMPL Annual Large Lots Auction **A LIVE AUCTION**

Presented by The Rocky Mountain Philatelic Library

Location: Meeting Room

2048 S. Pontiac Way, Denver, CO 80224

Beginning at 11:00 AM

Saturday, September 28th, 2024

**NO BUYER'S
PREMIUM**

**OVER
270
LOTS!**

This auction features 274 lots of stamps or covers in albums, on album pages, in stock books, commemorative or thematic collections, bulk cover lots, miscellaneous philatelic material, supplies (assorted empty albums and pages, stamp mounts, etc.), ephemera and philatelic books.

The catalog and scanned images of lots are available for viewing anytime at:

www.rmplauctions.org

Winners Announced for the 2nd Annual "Special Delivery of Dreams" Scholarship

by Regina Domenici

Public outreach and community support are a requirement for the RMPL to maintain 501(c)(3) status. In October 2022, the Board of Directors made a five-year commitment to fund two \$2,500 scholarships for eligible candidates to pursue their academic dreams.

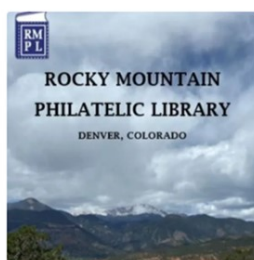
We had 132 applicants our first year. In 2023-2024, 192 nationwide candidates applied on the **BOLD.org** scholarship platform. The scholarship committee, comprised of Rich Palestro, Alex Papp, Gary Withrow and Regina Domenici, reviewed all applicants and selected five finalists. The Board identified the two winners based on their ability to verbalize how the RMPL scholarship will further their dreams. On March 31, BOLD.org notified the winners and dispersed 100% of our scholarship funds directly to the candidates' schools.



The 2024-25 Special Delivery of Dreams scholarship will be open soon. Members and their families are invited to apply at <https://bold.org>.



Beata Gergely is from Fort Lauderdale, Florida, and is a single mother of three. She is pursuing a degree in Nuclear and Industrial Radiologic Technologies at Broward College. She is a low-income, first-generation student and this is her second year as an RMPL scholarship winner.



Rocky Mountain Philatelic Library



Rosie Greer is from Elko, Nevada, and a mother of four children. She is a low-income, first-generation student pursuing degrees in English Language and Literature at Shasta College and intends on sharing literacy and literature with the world. She has been a stamp collector since the age of 10, when her great-grandfather shared his collection with her. She encourages her children to learn about stamps through pen pals and postcards.

NOTES FROM THE LIBRARIAN

Attention all Canadian collectors. We have received a donation of 39 volumes of the Proof Strikes of Canada. Every sort of Canadian cancel is here in these volumes. They are finally cataloged and are on the shelf for your perusal. That's 39 books, people. Come on in and check them out.

In other news, we've received quite a few United States Postal guides from the turn of the century (the last one). Get a fascinating glimpse into the world of the late 1800s and early 1900s post offices by checking out these books.

For years now, folks have noticed that our Stanley Gibbons catalogs are more than 30 years old. We've changed that! The RMPL now owns a set of 2024 Stanley Gibbons catalogs. With these catalogs you can see the world from a different perspective, and you can check them out.

Hopefully, you've noticed the theme here. Please come down to the library and peruse our books. Take some of them home with you, but don't forget to bring them back.

Sherri Soraci-Jennings
Librarian

continued from page 1

On May 5, 1913, the first set of Republic of China definitive stamps was issued. The set consists of three designs with a total of nineteen stamps. Values range from ½¢ up to \$10. The ½¢ to 10¢ values feature a Chinese Junk sailing down a river, in the background a train is crossing a railroad trestle. The 13¢ to 50¢ values feature a reaper harvesting rice. The higher values, \$1 to \$10, feature the Hall of Classics (*figure 2*). This article focuses specifically on the ten lower value Chinese Junk stamps.

figure 2 - London Printing, 1913.

top left, Republic of China, Scott #202, ½¢, blackish-brown, 1913.

top right, Republic of China, Scott #212, 15¢, brown, 1913.

bottom center, Republic of China, Scott #217, \$1, ochre and black, 1913.



This issue was intended for use throughout the country. Serious currency instability required the need for regional overprints on later stamp issues. A number of the earlier regional overprints are highlighted in this article. Many of these overprints are another rabbit hole reserved for later study.

There are three separate printings for the first issue of the Republic of China:

- 1 - London Printing, 1913
- 2 - First Peking Printing, 1915
- 3 - Second Peking Printing, 1923

The 1913, Waterlow and Sons, London Printing (*figure 3*), were printed using recessed engraving and line perforated 14 to 15. The stamps have no watermark and come in a variety of different shades and colors. Vertical and horizontal imperforate pairs exist; no booklet stamps were printed. All values of the London Printings exist with a "specimen" overprint. Later printings of the 10¢ stamp are found with two different die types; the London Printing is only found as die type 1.

figure 3 - Republic of China, Scott #202 to 211, 1913 London Printing.



The First Peking Printing of 1915 was produced by the Chinese Bureau of Engraving and Printing (PBMF) (*figure 4*). The stamps were printed using recessed engraving and perforated 14. Multiple shades and color varieties exist, vertical and horizontal imperforate pairs are found. There were five booklet panes of stamps printed; these are exceedingly rare and very expensive (*table 1*). The First Peking Printing of the 10¢ stamp is found as die type 1 or 2.

continued on page 7

continued from page 6



figure 4 - Republic of China, Scott #221 to 230, 1915 First Peking Printing.

The Chinese Bureau of Engraving and Printing (PBMF) printed the Second Peking Printing of 1923 (figure 5 and table 1). The stamps were printed using recessed engraving on thick or thin paper and perforated 14. Multiple shades and color varieties exist, vertical and horizontal imperforate pairs are known. There were six booklet panes of stamps printed. While these booklets are less expensive than the First Peking Printing booklets, they are still rare and rather expensive. The Second Peking Printing 10¢ stamp has a completely different frame design making it easy to identify.

Table 1 - 1913 - 1933 Chinese Junk Stamp Booklets	
First Peking Printing	Second Peking Printing
1¢ stamp - booklet pane of 4 stamps	1¢ stamp - booklet pane of 4 stamps
1¢ stamp - booklet pane of 6 stamps	1¢ stamp - booklet pane of 6 stamps
3¢ stamp - booklet pane of 6 stamps	3¢ stamp - booklet pane of 6 stamps
5¢ stamp - booklet pane of 4 stamps	5¢ stamp - booklet pane of 4 stamps
10¢ stamp - booklet pane of 4 stamps	10¢ stamp - booklet pane of 2 stamps
	10¢ stamp - booklet pane of 6 stamps



figure 5 - Republic of China, Scott #248 to 258, 1923 Second Peking Printing.

continued on page 8

continued from page 7

How can one determine the differentiate among the three printings? Glad you asked! The first, and easiest step in identifying the different printing types is to look at the bottom of the curved tablet and circles found at the top of the stamp. The second is to look closely at the flag flying on top of right mast (figures 6 - 8).



figure 6 - London Printing. There are light vertical shading lines found underneath the tablet and circles at the top of the stamp. The flag on the mast to the right is thin, long and triangular in shape.



figure 7 - First Peking Printing. There are heavier vertical shading lines found underneath the tablet and circles at the top of the stamp. The flag on the mast to the right is reduced in size and is a simple triangular shape.



figure 8 - Second Peking Printing. The vertical shading lines were removed. The flag on the mast to the right is thin, long and triangular in shape, similar to the London Printing.

Additional ways to identify the different print types is to examine the whitecaps found below the hull of the junk and the diagonal shading lines in the sails (figures 9 - 11).



figure 9 - London Printing. The white cap above the letter "H" in China does not spike up to the boat. There are heavy diagonal shading lines in the sails.

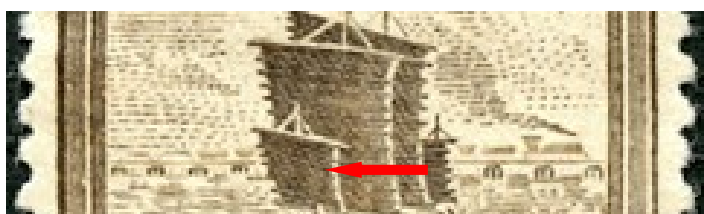


figure 10 - First Peking Printing. The white cap above the letter "H" in China touches the hull of the junk. The diagonal shading lines in the sails are difficult to see.

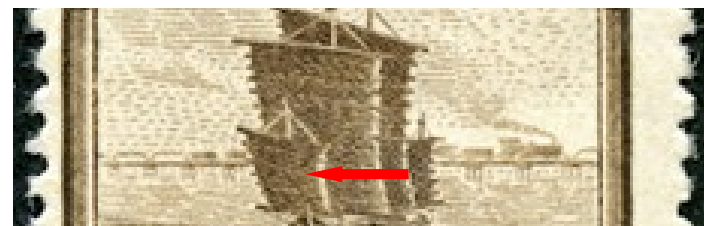


figure 11 - Second Peking Printing. Most of the white caps have been removed from the design below the Junk. The diagonal shading lines in the sails are difficult to see.

continued on page 9

continued from page 8

The First Peking Printing has two different die types of the 10¢ blue stamp (*figure 12*). This is the only stamp from the three printings with different die types. The 10¢ stamp was forged and is easily distinguished from the genuine stamp. The forgery is perforated 13, the genuine stamp is perforated 14. On the forgery, the "0" in the denomination is poorly drawn and uneven, the serif at the foot of the letter "P" in postage is missing and there are many other minor differences. The forgery was not created to defraud philatelists but rather the post office (*figure 13*).



figure 12

left - First Peking Printing, Scott #230, die type 1, small dot in the upper right scroll work.

right - First Peking Printing, Scott #230, die type 2, no dot in the upper right scroll work.



figure 13, 10¢ postal forgery.



figure 14 - Waterlow and Sons, Ltd. sales sample.

This example is found on part of the sales book page and the folio number is printed above making it easy to identify the design and style when corresponding with the Waterlow and Sons, Ltd. Company.

In 1919, flooding on the Yellow River caused significant hardship for the population. Several First and Second Peking Printing stamps received national overprints to raise funds for flood relief (*figure 15*). These semi-postal stamps were released on December 1, 1920. Additional stamps were overprinted for flood relief fundraising between 1920 and 1933 (*figure 16*).



figure 15

First Peking Printing flood relief national overprints, left to right:

Republic of China, Scott #B1, 1920, red overprint on Scott #222.

Republic of China, Scott #B2, 1920, blue overprint on Scott #225.

Republic of China, Scott #B3, 1920, red overprint on Scott #227.



left to right:

Republic of China, Scott #247, 1922, red overprint on Scott #224.

Republic of China, Scott #288, 1930, red overprint on Scott #224.

Table 2 Waterlow and Sons, Ltd., Sales Sample Stamps		
1¢ yellow-orange	Black overprint	
2¢ yellow-orange	Black overprint	
2¢ red	Black overprint	Simple capital letters without serifs,
2¢ red	Blue overprint	Capital letters with serifs.
10¢ blue	Black overprint	Possibly the same color as the issued stamp.

continued on page 10

continued from page 9



figure 16

Second Peking Printing flood relief national overprints, left to right:

Republic of China, Scott #274, 1925, red overprint on Scott #253.

Republic of China, Scott #289, 1930, red overprint on Scott #252

Republic of China, Scott #311, 1932, black overprint on Scott #252.

Republic of China, Scott #325, 1933, red overprint on Scott #275.

Regional overprints were required in a number of provinces during the 1920s and 1930s, specifically Manchuria, Sinkiang, Szechwan and Yunnan (figure 17 and table 3).

Stamps for Manchuria were overprinted as the paper currency was worth about 30% the value of the national currency. The overprint was required to prevent individuals from purchasing the regular stamps in Manchuria, traveling to another province, and then selling them for postage at a significant profit. This type of Manchurian overprint is only found on Second Peking Printing stamps.

The stamps for Sinkiang (Xinjiang) were overprinted as the metal used in the silver currency was of an inferior purity. This type of Sinkiang overprint is found on the First and Second Peking Printing stamps.

Stamps for Szechwan (Sichuan) and Yunnan were overprinted due to the devaluation of the currency in use in these provinces. These types of Szechwan and Yunnan overprints are only found on Second Peking Printing stamps.

It may seem a challenge trying to identify the different types of regional overprints on the Junk stamps but it is fairly simple. Looking at the four examples

below note that only one overprint is vertical. This is for the province of Sinkiang (Xinjiang). The same stamps with a red vertical overprint are Postal Savings stamps and were not used specifically for Sinkiang.

The remaining three stamps from Manchuria, Szechwan (Sichuan) and Yunnan all have a five-character horizontal overprint. The easiest way to identify the different overprints is by examining the third character in the overprint. They are markedly different from each other (figure 18 and 19).

With this information, take the opportunity to expand your philatelic horizons. Get cracking and challenge yourself, work together with some friends and share your new-found knowledge.



figure 17

first row, left to right:

Manchuria, Scott #2, 1927 regional overprint on Second Peking Printing stamp, Republic of China, Scott #249.

Szechwan, Scott #1, 1933, regional overprint on Second Peking Printing stamp, Republic of China, Scott #249.

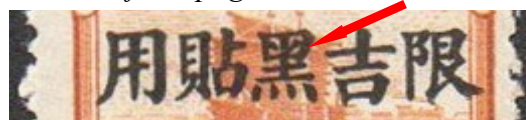
second row, left to right:

Yunnan, Scott #2, 1926, regional overprint on Second Peking Printing stamp, Republic of China, Scott #249.

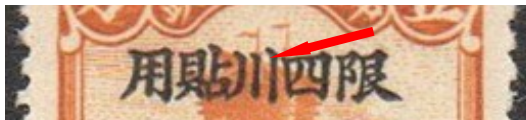
Sinkiang, Scott #2, 1915 regional overprint on Second Peking Printing stamp, Republic of China, Scott #222.

continued on page 11

continued from page 10



Manchurian regional overprint.



Szechwan regional overprint.



Yunnan regional overprint.

figure 18

Differences in the third characters found on the Manchurian, Szechwan and Yunnan regional overprints.



figure 19

there are two different types of Sinkiang overprints found on the First Peking Printing. It is easy to spot the difference once it is pointed out.

type 1 - the overprint measures 16mm in height and the first character is misaligned slightly to the left.

type 2 - the overprint measures 15.5mm in height and the first character is correctly aligned.

Sources:

<https://www.paperheritage.co.uk/articles/China-Junks.html>

<https://bigblue1840-1940.blogspot.com/2020/05/china-junk-issues-of-1913-1915-1923.html>

<https://colnect.com/en/stamps/list/country/442-China/year/1913>

TABLE 3 - REGIONAL OVERPRINTS ON THE FIRST AND SECOND PEKING PRINTING

First Peking	Manchuria	Sinkiang	Szechwan	Yunnan	Varieties
Scott #221		Scott #1			
Scott #222		Scott #2			
Scott #223		Scott #3			
Scott #224		Scott #4			
Scott #225		Scott #5			
Scott #226		Scott #6			
Scott #227		Scott #7			
Scott #228		Scott #8			
Scott #229		Scott #9			
Scott #230		Scott #10			
Second Peking Printing	Manchuria	Sinkiang	Szechwan	Yunnan	Varieties
Scott #248	Scott #1	Scott #17		Scott #1	Inv. ovpt on Manchuria
Scott #249	Scott #2	Scott #18	Scott #1	Scott #2	Inv. ovpt on Manchuria
Scott #250	Scott #3	Scott #19		Scott #3	
Scott #251	Scott #4	Scott #20		Scott #4	Inv. ovpt on Manchuria
Scott #252	Scott #5	Scott #21		Scott #5	
Scott #253	Scott #6	Scott #22		Scott #6	
Scott #254	Scott #7	Scott #23	Scott #2	Scott #7	Inv. ovpt on Manchuria
Scott #255	Scott #8	Scott #24		Scott #8	Yunnan 6¢ yellow-brown was never issued. It is considered a significant rarity.
Scott #256	Scott #9	Scott #25		Scott #9	
Scott #257	Scott #10	Scott #26		Scott #10	
Scott #258	Scott #11	Scott #27		Scott #11	Inv. ovpt on Manchuria



Covering the World



"A Hand-Painted Cachet"

by John H. Bloor

First day cover (FDC) collecting has fallen out of favor in the past twenty years or more. Nevertheless, the cover for this issue is a first day cover (*figure 1*). While the stamp is interesting and important, the real attraction is the cachet, a hand-painted image of the Palomar Observatory which closely resembles the stamp. For some of those who still like FDCs, myself included, it is the cachet that makes many covers interesting.

The stamp recognizes the Palomar Mountain Observatory, or just Palomar Observatory, near San Diego. It has been in continuous operation for over 90 years. The observatory has contributed and produced much of importance for astronomy and astrophysics. It is most noted for the 200-inch Hale telescope, named for George Ellery Hale (1898-1938) who was largely responsible for the building of the observatory. Palomar is managed by the California Institute of Technology. More information about Hale and the Palomar Observatory is on the website listed below in the references.

The cachet artist is Dorothy Knapp (1907-1986) (*figure 2*), known for her interesting and gorgeous artwork on FDCs, patriotic covers, and event covers. Although the dates of her work are uncertain, cacheted covers are known from the late 1920s until the spring of 1953 when she stopped making cachets to take a steady job to pay for her son's college expenses. She did occasionally make a few other cachets after 1953.

Dorothy originally began her cachet art to make covers for her family. Her husband was a stamp and FDC dealer and she made a number of covers for him to sell. In 1941, E. Milnor Peck of Fleetwood Cover Service saw her work and commissioned her to design covers for some of his FDCs and event covers, beginning with the 1942 Kentucky Statehood stamp and continuing until perhaps the early 1950s. Dorothy also did covers for Louis and Mae Weigand, and a few other dealers. Louis Weigand was a naval cachet dealer in Brooklyn, NY.

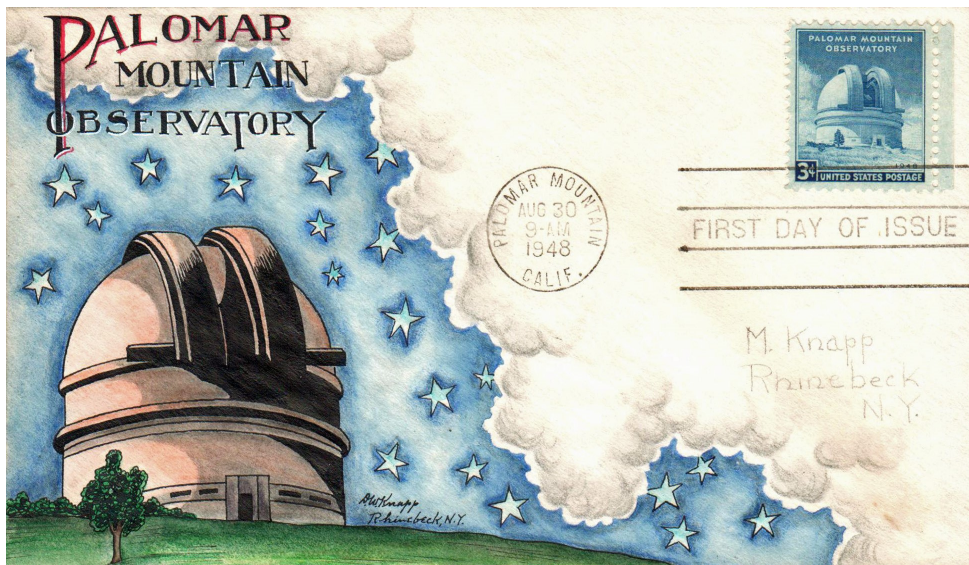


figure 1, Palomar Observatory stamp First Day Cover, 1948, Scott #966, with cachet created and signed by Dorothy Knapp.

This information about Dorothy Knapp hardly does her justice. For the complete story of her life and work as well as a catalog of her covers, see the book by Douglas Weisz cited below. There is a copy of this book in the RMPL.

That's it for this issue. As with any aspect of philately that you can imagine, first day covers are still an area to consider in your collecting world. I hope to add your cover to the next issue of *Scribblings*, if you send me the information!

References

<https://sites.astro.caltech.edu/palomar/about/history.html>

Dorothy Knapp: *Philately and Family*, by Douglas S. Weisz (www.douglasweisz.com; 2014)



figure 2, Portrait of Dorothy Knapp when she was about 22 years old.

The 2024 Rocky Mountain Stamp Show

by Charlie Freise

From May 24th through May 26th stamp collectors, dealers and exhibitors gathered together and participated in the 73rd Annual Rocky Mountain Stamp Show.

In attendance were 24 dealers from across the country, five guest societies (International Society for Portuguese Philately, United Postal Stationery Society, Colorado Postal History Society, American Philatelic Society Writer's Unit #30 and the American Association of Philatelic Exhibitors), one special guest (Colorado Native Plant Society), representatives from the Letterpress Depot Museum and over 700 visitors.



top, early Friday morning prior to the official opening more than 270 exhibit frames waiting viewing.

bottom, the Letterpress Depot museum display and printing demonstration.

There were more than 270 exhibit frames containing 45 exhibits from around the world. In addition to this, a number of local clubs and societies entered an annual one-frame exhibit contest (Boulder Stamp Club, Cherrelyn Stamp Club, Colorado Postal History Society, CYPHER Stamp Club-Youth, Denver Stamp Club, Great Britain & Colonies Collectors Club, Longmont Stampers, Scandinavian Collectors Club #27 and the TOpical Philatelists In Colorado). The Cherrelyn Stamp Club won the one-frame club exhibit competition.

The 2024 Rocky Mountain Stamp Show hosted the annual George Brett Cup competition for the fourth consecutive year. There were 12 exhibits entered in the competition this year. Tony Dewey's exhibit, The 3¢ Connecticut Tercentenary Issue of 1935 and its First Days, was the winner. The George Brett Cup was presented at the Awards Banquet held at the DoubleTree

Hotel on Saturday evening. Tony was unable to attend the show. His wife, Martha, and daughter, Hanna, accepted the award on his behalf (*below*).



On the opening day, Friday, May 24th, the Post Office held a dedication ceremony for the new Ansel Adams forever stamps released on May 15th. Jay Bigalke, of AMOS Media, was present and took part in the dedication ceremony (*below*).



left to right - Maggie Gaddis of the Colorado Native Plant Society, Jay Bigalke of AMOS Media, Claudia Hall from the USPS and Ron Lampo, President of the Rocky Mountain Stamp Show, unveil the Ansel Adams stamps during the dedication ceremony.

continued on page 14

continued from page 13

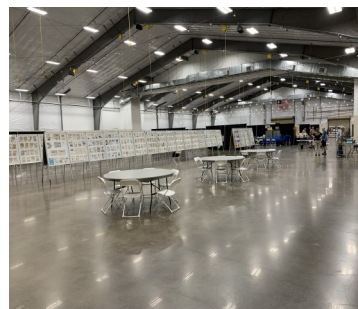
During the show, the Rocky Mountain Philatelic Library hosted the 30th Annual Silent Auction (*below*) and "What's in Your Attic?" booth. There were over 800 lots available with no buyer's premium. The auction saw more than 120 bidders from around the world with a total of 96 bidders winning lots. The annual auctions are a major source of revenue for the Library and enable the organization to keep its doors open for philatelists around the country.



A special thanks goes out to the many dealers who continue to support the Rocky Mountain Stamp Show:

Coins, Stamps N' Stuff, LLC
Crown Colony Stamps
D&P Stamps
DK Enterprise
Duke Luke's
Ed Dimmick
HB Philatelics
Joe's Stamps
JP Philatelics
Kyle Nybo Stamps
Leo's Stamps
Michael Jaffe Stamps
Newport Harbor Stamp Company

North Star Stamps
Ptarmigan Collectibles
RASLAD Enterprises
San Pedro Stamp & Coin
Stamp Art
Stamp Center of Texas
Stamps for Less
Steve Hesse
Village Stamp & Coin
Webster Stickney
Worldwide Philatelics



This picture emphasizes the size of the exhibition hall. There is room to accommodate 30+ dealers, visitors and 400+ exhibit frames. There is ample lighting, separate rooms for society meetings and seminars and a concession stand with seating.

Youth attending the stamp show were able to participate in a variety of activities. All of the materials and stamps available to youth visitors are provided free. This is made possible through the donations from dealers and individual collectors, as well as the support of the Rocky Mountain Philatelic Library. A Scout Stamp Collecting Merit Badge workshop was completed on Sunday and five scouts earned their merit badges.



In closing, we thank the core group of volunteers that constitute the Rocky Mountain Stamp Show Committee and support staff for the event. The show would not be possible without their dedication to promoting the hobby and stamp collecting community.

Tim Bartshe
Jon Bennett
John Bloor
Steve Bonowski
Heather Castle
Ashlin Chavez
Dean Chavez
Susan Chavez
Don Dhonau
Paul Domenici
Regina Domenici
Donald Evans
Laura Everitt
Charlie Freise
Andrea Hernandez
Andrew Kelley

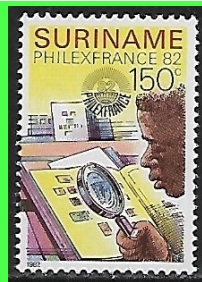
Jim Kilbane
Joe Lampo
Kate Lampo
Ron Lampo
Tom Lampo
Liam Larkin
Mike Larkin
Steve McGill
Bob Miller
Jeff Modesitt
Will Mahoney
Jeff Montgomery
Jeff Morse
Rusty Morse
Dan Nieuwlandt
Rich Palestro

Mike Pascoe
Roger Rydberg
Steve Schweighofer
Gregory Shoults
Marc Silberman
Bill Smith
Sherri Soraci-Jennings
Van Jennings
Patrick Speckmeyer
Carole Sundine
Charles Thompson
Bryan Trigg
Tonny Van Loij
Terry Weeber



Young Collectors Corner

by Charlie Freise



Visit CYPHERStampClub.com to learn more about stamp collecting.

Semi-Postal Stamps

The semi-postal stamp is also known as a charity stamp. They are issued to raise money for a charitable cause or purpose. Usually, the money raised is used for early childhood education, recovery from natural disasters, health care & research and war funding or recovery efforts. The stamps usually show two values separated by a plus sign, sometimes only the plus sign is found on the stamp. Buyers pay an extra fee over face value for semi-postal stamps (example: a face value stamp sells for 10 cents, an extra 5 cents goes to charity, for a total of 15 cents). This type of stamp became popular in Europe beginning in the early 20th century and they continue to be issued today. The United States issued its first semi-postal stamp, the Breast Cancer Research stamp, in 1998.



United States, 34¢ + 6¢, 1998, Scott #B1, for breast cancer research.



Netherlands, 2¢ + 3¢, 1956, Scott #B301, for the benefit of children.



Russia 10k + 1k, 1915, Scott #B12, for the benefit of soldiers and their families.



France, 25c + 10c, 1966, Scott #B400, for the benefit of Stamp Day.

WHO IS PICTURED ON THESE STAMPS?



A



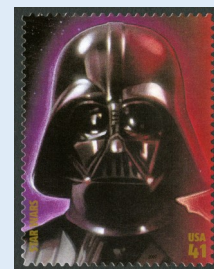
C



E



G



I



B



D



F



H



J

Can you identify the characters featured on these postage stamps? The answer key is found on page 19.

New Publications for our Members

UNITED STATES

1912 Bullinger's Postal and Shippers Guide for the United States and Canada

California Doanes: A Checklist and Scarcity Index for Doane Cancel Use in California, by Richard W. Helbock with Randy Stehle and John Williams

A Checklist of Arkansas Post Offices, by Alan H. Patera and John S. Gallagher

A Checklist of South Dakota Post Offices, by Alan H. Patera and John S. Gallagher

Coloma: First town of the Mountains, by Alan H. Patera

Darwin, California, by Robert P. Palazzo

Free Delivery of Rural Mails, by Charles H. Greathouse

General Scheme of New Mexico

Pacific Northwest Mining Camps, by Alan H. Patera

Poag's Guide to Shopkeepers and Shootists of Bodie, by Larry Poag

Post Offices of Oregon, Washington and Idaho: Illustrated, by Robert L. Landis

Railway Mail Service: Schedule of Mail Trains, Seventh Division, January 20, 1888

The Humboldt Range: 19th Century Mining Camps, by Alan H. Patera

United States Highway Post Office Cover Catalog, by the Mobile Post Office Society

The United States Specialized Catalog of First Day Covers

NORTH AMERICA

A Checklist of Alberta Post Offices

A Checklist of Manitoba Post Offices

A Checklist of Saskatchewan Post Offices

A Checklist of Territorial Post Offices, Including Colonial British Columbia

Booklets of the Admiral Stamps of 1911 to 1925, by George C. Marler

NORTH AMERICA (continued)

Canadian Postal Guide: Containing the Chief Regulations of the Post Office, by the Canadian Post Office Department

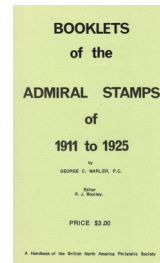
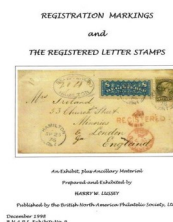
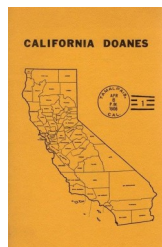
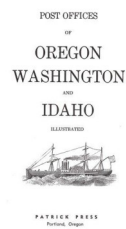
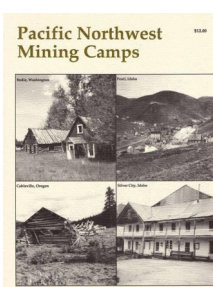
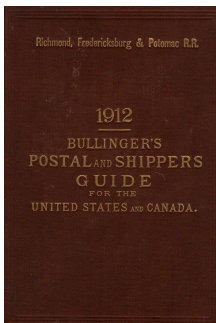
Dominion of Canada Official Postal Guide: 1947

Reference Manual of BNA Fakes, Forgeries & Counterfeits: Series II, by Kenneth W. Pugh

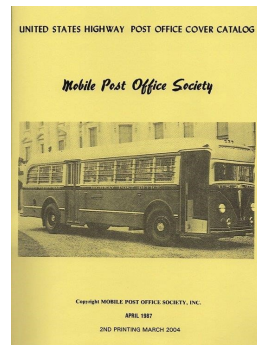
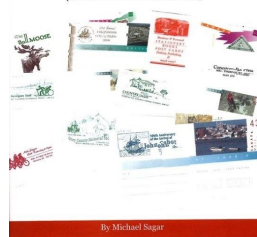
Registration Markings and the Registered Letter Stamps: An Exhibit, Plus Ancillary Material, by Harry W. Lussey

The Canada Postal Act and Post Offices, 1878: and the 'Canada' Split Ring Proofs, June 1879 - January 1880, by Brian H. Symonds

The Postal Stationery of Canada with Cachets Printed by the Conestoga Press 1986-2004: Vol. II: Private Cachets, by Michael Sagar



The Postal Stationery of Canada with cachets printed by the Conestoga Press 1986 - 2004
(Volume II: Private Cachets)



New Publications for our Members

COLORADO

Gem of the Mountain Valley: A History of Broomfield, by Laura L. Spitler and Lou Walther

La Fayette Twitchell's Rocky Mountain Gold Adventure 1859 to 1861, by David F. New

ASIA

Notes on the "Chung Hwa" Forgeries, by A. Charles Strong

CENTRAL AMERICA and the CARIBBEAN

The Encyclopedia of British Empire Postage Stamps, 1639-1952, Vol. VI: The Leeward Islands

EUROPE

Billig's 1942 Specialized Postage Stamp Catalogue of Czechoslovakia, Eastern-Silesia, Siberia, Carpatho-Ukraine, Bohemia, Moravia and Slovakia

English and Welsh Spoon Cancels 1853-1870: A Comprehensive Study of These Distinctive Experimental Duplex Cancels, by Richard Arundel

German Czech Cancels

Ilustrowany Katalog Znaczkow Polskich

"Königlich Württembergische Postamt Balingen" in der Zeit von 1806 bis 1918/20: (mit Ausblicken auf in der Umgebung von Balingen Gelegene Poststationen), by Rudolf Töpfer

Neudrucke u. Fälschungen, by Otto E. Stiedl

Oscars-Katalogen: Förteckning över Ortstämplat under Oscarsperioden 1/1 1885--31/12 1911

Serbien, by Otto E. Stiedl

Squared Circle Postmarks, by W. G. Stitt Dibden

Squared Circle Postmarks of the London Suburban District Offices, by Stanley F. Cohen

Südwestdeutsche Postgeschichtliche Blätter der Oberpostdirektion Freiburg

The German Occupation of Sudetenland 1938, by W. A. Dawson

EUROPE (continued)

Die Postalischen Abstempelungen und Andere Entwertungsarten auf den Österreichischen Post-Wertzeichen-Ausgaben 1867, 1883, und 1890: Erster Band, von Wilhelm Klein (in German)

The Postal Obliterations and Other Cancellations on the Austrian Postage Stamps of the Issues 1867, 1883 and 1890: Vol I, by Wilhelm Klein (in English)

The Postmarks of Great Britain and Ireland, by R. C. Alcock and F. C. Holland (7 supplements)

Thurn und Taxis: 30 Vergrößerungen mit 300 Erkennungsmerkmalen der Originale, Türk Pullari ve Antiyeleleri Kataloğu (Turkish Stamps and Postal Stationeries): 1863-2005

Zoubkovani cs. Postovnich Znamek (1918-1939), by Jan Karasek

TOPICAL

Earth Sciences on Stamps, by Peter Manning

MISCELLANEOUS

The Basics of Stamp Collecting, by Pat Penny

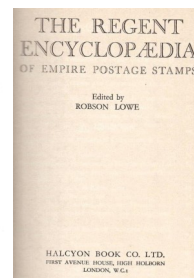
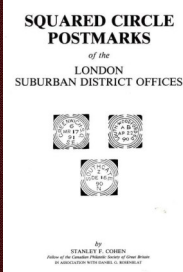
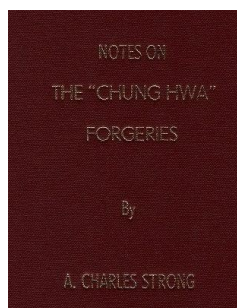
For Juniors With Love, by Calvet M. Hahn

The Regent Encyclopædia of Empire Postage Stamps

Terins United Nations Specialized Catalog, by J. Terins

NON-PHILATELIC (Railroads)

Epic of the Overland: An Account of the Building of the Central and Union Pacific Railroad, by Robert Lardin Fulton



RMPL Board of Directors Meeting

Board of Directors Meeting May 16, 2024

The meeting was called to order at 4:00 PM

Board members present: Tonny Von Loij, Jim Kilbane, Bill Douglass, Eric Carlson, Steve Schweighofer, Gary Withrow, Charlie Freise, Rod Haenni, Paul and Regina Domenici. Visitor Bill Blankemeier.

Old Business:

The prior meeting minutes were approved by the Board via email in March.

Treasurer's report (Bill Douglass): The latest financial statements were approved. Rod Haenni and Richard Porto will replace Steve McGill and Steve Nadler on the Finance Committee.

Paul Lee's "Parks, Postmarks and Postmasters" revised book publication (Jim Kilbane): The only viable financial method is to provide a digital download on our website.

May Auction update (Paul Domenici and Gary Withrow): 800 lots, liberal bids are coming in. Most people wait until the last week to bid or submit live bids at the Rocky Mountain Stamp Show.

Special Delivery of Dreams Scholarship (Gary Withrow and Regina Domenici): 2024 winners announced (see winner announcement article in *Scribblings*). The Special Delivery of Dreams Scholarship for 2025 will be funded again on the BOLD.org site, it should appear sometime in June.

Proposed By-Law changes regarding the Board elections/length of terms (Eric Carlson and Regina Domenici): To increase the opportunity for member participation, a motion was approved to amend the by-laws to include:

- 1) Increase the total number of Directors from 4 to 6.
- 2) Directors and officers continue to serve for 3 years but with a limit of two consecutive terms.
- 3) Directors and officers may run for the same position again after one election cycle.

- 4) Stagger the number of positions open for election to promote bench strength

New Business

By-Law corrections: Eliminate Article II section 3 as irrelevant: "Applications for membership in the RMPL are to be submitted to the Board of Directors (Board). If the Board declines the application, the application and any money paid will be returned to the applicant. Any applicant who has been declined may request to appear before the Board. The Board's decision in this circumstance is final."

Promoting the Special Delivery of Dreams Scholarship to the greater philatelic community:

- 1) To encourage philatelic community/family members to apply, the RMPL booth will display a banner publicizing the scholarship opportunity at the Great American Stamp Show in Connecticut.
- 2) Gary suggested money for attendance at additional shows be included in the budget to promote the Library. Attendees would promote the RMPL and encourage new membership with a portfolio of what RMPL has to offer, (auctions, youth, scholarships, etc.) and what we do with the money.

Air conditioning maintenance: Motion was approved to contract with Economy Air Conditioning for annual maintenance on our air conditioning units.

Upgrades to 2048: Steve will obtain bids to upgrade the restroom and paint the west exterior wall.

Meeting time for the board was changed to 3:00 PM.

The meeting adjourned at 5:30 PM.

The next meeting is July 18, 2024.

Respectfully submitted,

Regina Domenici
Recording Secretary

DONATIONS

The library thrives on the enthusiasm and generosity of its members. The following societies, clubs, and individuals made donations to the Library since the last donation listing. These donations were made from March 21, 2024 through May 16, 2024. Thank you!

INDIVIDUAL DONATIONS

Denver Postcard Club Longmont Stampers Scandinavian Collectors Club

Anonymous	Vernon Evenson	Tom Longworth	David Reitsema
James Aldridge	Judy Fernandez-	Will Mahoney	Roger Rydberg
Randy Alexander	Newblom	Stephen Marsters	Janet Sandberg
George Anema	Maria Gentile	Larry Martin	Dick Seeley
Jonathan Bennett	Kenneth Goss	Gary McIntyre	Martin Severe
William Blankemeier	Carroll Gray	Patrick McNally	Robert Single
John Bloor	Carrolyn Green	Robert Miller	Mitchell Slovut
Stephen Bonowski	Darian Greiner	Carol Mobley	Bill Stahl
Even Brande	R. Allan Hahn	Ronda Morten	William Jay Treat
Francis Caprio	Jeffrey Halvorson	Joe Neri	Neal Turnbow
Peter Colwell	Carolyn Hewett	Randy Nilson	Robyn Uphoff
Kathy Crabbs	Mark Hoskinson	Helen Ovmeyer	Jack Van Ens
Ellen Craig	Mary Jenkins	Alexander Papp	Maryellen Weiland
Pam Crossley	Stan Kliebenstein	Stephen Pero	Aaron Wilkinson
Paul Domenici	Leonard Kortekaas	John Pfeiffer	Mary Whitman-Montoya
Sue Dunn	Robert E. Lamb	Mike Pokorny	Heather Wood
Kent Dvorak	Gordon Lawton	Thomas Pollard	Edward Zamejc

NEW MEMBERS

We extend a warm welcome to new members who have joined the library from March 15, 2024 through May 16, 2024.

Anonymous
David Gibbons

Joseph Kibler
Bill Massman

Keith Sprincz
Dr. Bruce Wasserman

Please Note: New members and membership renewals received after May 16, 2024, will be acknowledged in the next issue of *Scribblings*.

Answer key to "Who is Pictured on These Stamps?" found on page 14.

- A. United States, Scott #4553, 2011, Lightning McQueen and Tow Mater.
- B. United States, Scott #4026, 2006, Cinderella and Prince Charming.
- C. United States, Scott #4028, 2006, Lady and the Tramp.
- D. United States, Scott #4193, 2007, Peter Pan and Tinker Bell.
- E. United States, Scott #4835, 2013, Hagrid.

- F. United States, Scott #5711, 2023, Buzz Lightyear.
- G. United States, Scott #4027, 2006, Beauty and the Beast.
- H. United States, Scott #4143f, 2007, Princess Leia and R2D2.
- I. United States, Scott #4143a, 2007, Darth Vader.
- J. United States, Scott #4345, 2008, Mowgli and Baloo.

Scheduled Library Events



The RMPL Operations Manager, Steve Schweighofer, maintains a calendar of reserved club times. Clubs should check the calendar regularly and notify Steve (steve.schweighofer@comcast.net) of any updates or changes. Requests to reserve meeting space and time for philatelically related meetings other than those listed here must be approved and scheduled with Steve well in advance. Call the Library or the appropriate club to confirm the place and time.

Hours of Operation:
 Mon - Sat: 10:00 AM - 2:00 PM
 Thu: 5:00 - 8:00 PM
 Closed Sundays and Holidays
 Phone: (303) 759-9921
 Email: rmpldenverco@gmail.com

JULY 2024

AUGUST 2024

* * * SPECIAL NOTE * * *

The Great Britain and Commonwealth Collectors Club, Scandinavian Collectors Club and Topical Philatelists In Colorado (TOPIC) will not meet in July or August. The clubs will meet again in September 2024 after the summer break.

Jul 4 Thu - Closed

Jul 10 Wed - meeting 7 PM
 Denver Germany Stamp Club

Jul 11 Thu - meeting 2 PM
 Cherrelyn Stamp Club

Jul 13 Sat - 9AM
 Second Saturday at the RMPL
 Presenter: Dr. Frank Scheer
*"Maybe Snow Will Stay the Courier From the Swift
 Completion of Their Appointed Rounds"*

Jul 13 Sat - meeting 10:30 AM
 Mexico/Latin America Club

Jul 14 Sun - meeting 1 PM
 Denver Postcard Club

Jul 18 Thu - meeting 3 PM
 RMPL Board of Directors - visitors welcome

Jul 20 Sat - meeting 9:30 AM
 CYPHER Stamp Club

Jul 31 Wed - meeting 2 PM
 Denver Stamp Club

Aug 8 Thu - meeting 2 PM
 Cherrelyn Stamp Club

Aug 10 Sat - 9 AM
Second Saturday at the RMPL
 Presenter: Jim Kilbane
*An Overview of Danish Bypost and Landpost
 Stamps"*

Aug 10 Sat - meeting 10:30 AM
 Mexico/Latin America Club

Aug 10 Sat - meeting 12:30 PM
 Rocky Mountain Aero & Astrophilatellic Club

Aug 11 Sun - meeting 1 PM
 Denver Postcard Club

Aug 14 Wed - meeting 7:00 PM
 Denver Germany Stamp Club

Aug 17 Sat - meeting 9:30 AM
 CYPHER Stamp Club

Aug 28 Wed - meeting 2 PM
 Denver Stamp Club

MARK YOUR CALENDAR !

Library Closure - July 4, 2024

Denver Postcard & Paper Show - July 19-20, 2024

Mile High Stamp Show (Denver Stamp Club) - Aug 2 - 3, 2024

CHERPEX Stamp Show - Sep 13 - 14, 2024

**19th Annual RMPL Large Lots Auction - Sep 28, 2024
 (Note the change in the date of the auction)**