



Sc r i b b l i n g s

... from the Rocky Mountain Philatelic Library

Sherri Soraci-Jennings, Librarian

Vol. 31 - No. 3

2038 South Pontiac Way, Denver, CO 80224-2412

May/June 2023

www.rockymountainphilateliclibrary.org

(303)-759-9921

Email: rmpl@qwestoffice.net

IN THIS ISSUE

Everything About Birds
by Charlie Freise 1

President's Message
by Tonny Van Loij 2

General Notices 3

RMPL Silent Auction Advertisement 3

2023 Rocky Mountain Stamp Show Advertisement 4

2023 Denver Post Card Show Advertisement 4

That is no way to Pronounce Niue (Nyoo-Ay)
by Charlie Freise 7

Second Saturday Programs

"US Postage Stamps #112-122 and Re-Issues #123-133"
by Jerry Hager 9

"Count Ferdinand von Zeppelin's Dirigible"
by Pat McNally 9

Denver Stamp Club Show Advertisement 9

WYPEX 2023 Stamp Show Advertisement 9

New Publications for our Members..... 10

Legend of Mahabalipuram
by Charlie Freise 13

Board Minutes - March 16, 2023..... 14

Donations..... 15

New Members 15

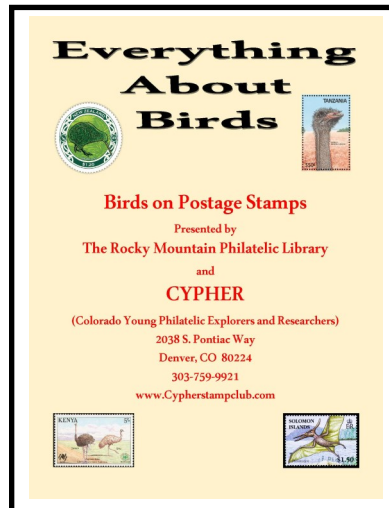
Notes from the Librarian 15

Notes from the Editor 15

Scheduled Library Events..... 16

Everything About Birds

by Charlie Freise



It was a cold, windy morning when Regina Domenici, Dan Nieuwlandt and Charlie Freise gathered in the RMPL parking lot on February 17, 2023. They were on a mission of high importance, the streets were deserted and their activities were unobserved as planned. Their movements were well choreographed, planned, practiced and organized. Within minutes, they had loaded a number of boxes and materials into an SUV and departed. Their destination; the Howbert Elementary School in Colorado Springs.

A little over an hour later they arrived at their destination. Prior to leaving the vehicle, they took a few moments to go over last-minute preparations and details. After exiting the vehicle, they walked towards the entrance of a sprawling, single story, brick building. They were greeted and escorted on a short tour of the facility.

After unloading the vehicle, they were again escorted to a large room with three cinder block walls. The fourth wall was covered with windows. The clock, of utilitarian and institutional design, indicated they had twenty minutes to set up their equipment and make final preparations before the first presentation. Quickly, with practiced skill and economy of movement, they set up the audio-visual equipment, displays and organized the presentation packets.



continued on page 5

Scribblings

Newsletter of the Rocky Mountain Philatelic Library

2038 South Pontiac Way
Denver, CO 80224

Phone: (303) 759-9921

Email: rmpl@qwestoffice.net

Web Page: www.rockymountainphilateliclibrary.org

Instagram: The RMPL

Hours: Monday - Saturday 10:00 AM - 2:00 PM

Thursday 5:00 - 8:00 PM

Closed Sundays and Holidays

Librarian

Sherri Soraci-Jennings

Library Officers

| | |
|--------------------------|--------------------|
| President: | Tonny Van Loij |
| Vice President: | Jim Kilbane |
| Operations Manager: | Steve Schweighofer |
| Stamp Manager: | Dasa Metzler |
| Corresponding Secretary: | Paul Domenici |
| Recording Secretary: | Regina Domenici |
| Treasurer: | William Douglass |
| Bookkeeper: | Linda Veres |

Directors:

| | |
|---------------|--------------|
| Eric Carlson | Rod Haenni |
| Rich Palestro | Gary Withrow |

Ex-officio member: Don Dhonau

Editor

Charlie Freise

Copy Editors / Proofreaders

| | |
|------------------------|--------------------|
| John Bloor | Paul Domenici |
| Roger Rydberg | Steve Schweighofer |
| Sherri Soraci-Jennings | |

Scribblings is published bimonthly by the Rocky Mountain Philatelic Library. The RMPL is a chartered Colorado nonprofit corporation and is an IRS-designated 501(c)(3) charitable organization. Membership subscriptions over that for the contributing membership, and donations of appropriate philatelic materials, may be deductible for US income tax purposes. The Library is a volunteer organization. Financial donations, philatelic books, stamps, supplies and donations of your time are welcome. The Library Bylaws are available for review at the Library or you may obtain a copy upon request.

A basic membership with the RMPL is \$25 per year and includes book checkout privileges and six issues of *Scribblings*. Call for more information.

Officers and Directors may be contacted through the RMPL.

From the Desk of the President -

by Tonny Van Loij



How fast time goes by and this first quarter has been very busy.

The Library has received a large number of donations. These are always welcome. It takes quite a bit of work to go through the donations, sort the material, and determine which items are suitable for placement in an upcoming auction. Sometimes the time and effort

spent sorting through donated material is more work than the actual monetary value. However, no matter the value, every item is appreciated equally. Every donation helps to keep our doors open and our members happy.

Last month Erl, Gary, Paul and the group of auction volunteers concluded another highly successful auction. All lots were sold and the number of bidders was higher than previously recorded. It is always amazing to learn what collectors are interested in. As the old saying goes, "All you need are two bidders interested in the same item. . . ." A special thank-you goes out to our auction team for all the hard work and effort that goes into the auction process.

May is approaching quickly and this brings us to the annual Rocky Mountain Stamp Show, a WSP event. The show location is at the Arapahoe Fairgrounds over the Memorial Day weekend. The annual RMPL Silent Auction will be held in conjunction with the show. The catalog is included with this issue of *Scribblings*.

August brings us to another special event, the 30th anniversary of the founding of the RMPL. It is amazing how much the Library has evolved since its humble beginnings. Sadly, most of the founders are no longer with us, Jim Kilbane and Roger Rydberg are the last surviving founding members. The Library would not be here today without the continued support from our indefatigable group of volunteers,

Tonny Van Loij
President

HOURS OF OPERATION

In the event of inclement weather the Library may close unexpectedly. Prior to venturing out, particularly when it is snowing, it is advisable to call ahead and make sure the Library is open.

GENERAL ANNOUNCEMENTS

MAY 25-27 LIBRARY CLOSURE

The Library will be closed during the Rocky Mountain Stamp Show.

NEW WEBSITE AND BENEFIT

The Library has a new and improved website:

www.rockymountainphilatelibrary.org

In the future we will add a listing of the seller IDs for RMPL members selling stamps and philatelic material on eBay, HipStamps or other websites. This page will be made available to anyone visiting the Library website. If you wish to include your business on this listing please send the following information: name, Library membership ID, Seller ID, website (eBay, HipStamp, etc.) along with a short description of the material you generally have available to:

websitemanager@rmplauctions.org

Thank you, Gary Withrow

LIBRARY VOLUNTEERS WANTED

Additional help is needed in almost every area of RMPL operations, especially back-ups for publishing and stamp mart operations. If you are interested in becoming more active with the RMPL, whether it is helping publish *Scribblings*, sorting donations for our stamp mart, or helping with library maintenance, please contact the Library at 303-759-9921.

2023 ROCKY MOUNTAIN STAMP SHOW

This is a continuing call for volunteers to commit a few hours of their time to help at this year's stamp show. A number of individuals have already come forward and this is greatly appreciated. However, additional volunteers are needed to manage the registration desk, assist with floor management, mounting exhibits and to assist with cachet sales. We need a hearty, dedicated team to set up and take down the exhibit display frames. Please contact Andrew Kelley at stamps@andrewkelley.net for more information on volunteering.

SECOND SATURDAY PROGRAMS NEEDED

Sponsored by the RMPL, the Second Saturday programs are generally about an hour long and focus on a specific subject. The subject matter is not limited to philately. Attendance is open to anyone who has a desire to learn something new about a specific subject, or enjoys discovering something new about an area of philately unfamiliar to them. Please contact Jim Kilbane at: aurora_80017@yahoo.com for more information.

CYPHER STAMP CLUB

The Denver Young Collectors has changed their name to the CYPHER Stamp Club (Colorado Young Philatelic Explorers and Researchers). Meetings will continue on the third Saturday of every month. Visit our website: CypherStampClub.com, follow us on Instagram: [CypherStampClub](https://www.instagram.com/CypherStampClub) and Facebook: [CypherStamp](https://www.facebook.com/CypherStamp).

The Rocky Mountain Philatelic Library The 29th Annual Silent Auction Held at the Rocky Mountain Stamp Show

May 26th - May 28th, 2023

Over 800 Lots - No Buyers Premium

View the catalog and scanned images of the lots and open a bid sheet anytime at: www.rmplauctions.org.



**Pre-register for the Rocky Mountain Stamp Show at:
www. rockymountainstampshow.com
"Save time, don't stand in line - pre-register."
Tickets are required, admission is free!**

CELEBRATING THE BIRDS OF COLORADO

ROCKY MOUNTAIN Stamp Show

Arapahoe County Fairgrounds 25690 East Quincy Ave. Aurora, Colorado

MAY 26 - 28, 2023

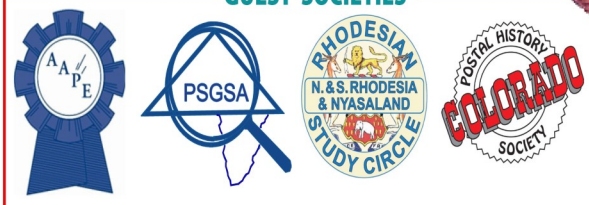
Friday and Saturday 10:00AM - 6:00PM

Sunday 10:00AM - 3:00PM

HOSTING



GUEST SOCIETIES



Attractions for all three days
What's in Your Attic?, a free collection evaluation
Denver Stamp Camp Activities for youth and young adults
Also the Rocky Mountain Philatelic Library's silent auction with 750+ lots

For additional information
www.rockymountainstampshow.com

special guest  DENVER AUDUBON



DENVER POSTCARD & PAPER SHOW

May 26-27, 2023

Arapahoe County Fairgrounds Aurora, CO

WWW.DENVERPOSTCARDSHOW.COM

See back for details!

Held in conjunction with the
Rocky Mountain Stamp Show

Denver Postcard and Paper Show

Arapahoe County Fairgrounds
25690 E. Quincy Avenue
Aurora, CO 80016

May 26th - 10 AM - 6 PM
May 27th - 9:30 AM - 4PM

FREE ADMISSION

*Friday early bird admission - 9 AM - \$10.00

www.denverpostcardshow.com
camoble@ephemeranet.com

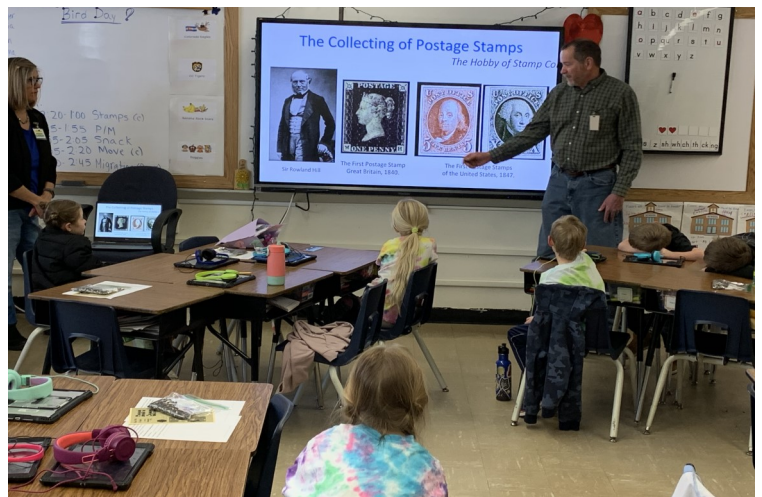
continued from page 1

For the moment, their work was complete. Now they awaited the arrival of the first group of young children.

The tension in the room was palpable. Dan, Regina and Charlie paced back and forth. Muted comments and revisions to their presentation plan were passed back and forth. The first indication of the children's arrival was a noticeable increase in the volume of voices and foot traffic from the hallway. There was a momentary pause and then the door swung open, the first of many first-grade children entered. Perhaps seven or eight children were well into the room before observing something was different. Their voices quieted appreciably, their progress stopped and the remaining students backed up into the hallway. One child, overcoming the initial shock and unfamiliarity of the situation spoke up, "Who are you and what is going on?"

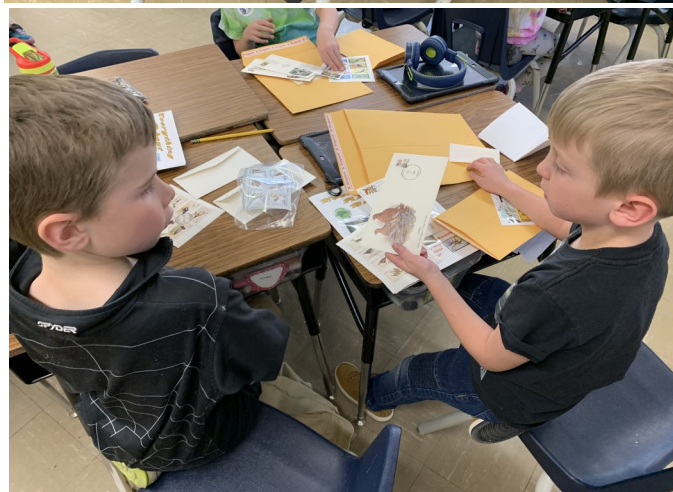
Their teacher entered the room and issued instructions. The children followed the instructions without hesitation or question, all while looking over their shoulders. Introductions were made and the first of many "Everything About Birds" presentations for the students at Howbert Elementary School began.

Dan, an adult mentor for the CYPHER (Colorado Young Philatelic Explorers and Researchers) Stamp Club, began the presentation with a 15-20 minute, animated and interactive, PowerPoint program. The program provided basic background information on the hobby of stamp collecting and progressed into the topic of collecting birds on stamps. The first-grade class, approximately 20 young students, was captivated by the vivid images. They easily understood the information in the presentation. Regina stood by, monitoring the audio-visual equipment and PowerPoint program. She assisted Dan with answering questions and maintaining some semblance of organized chaos with so many young children. Charlie stood by the door anticipating the need to make a quick exit.



continued on page 6

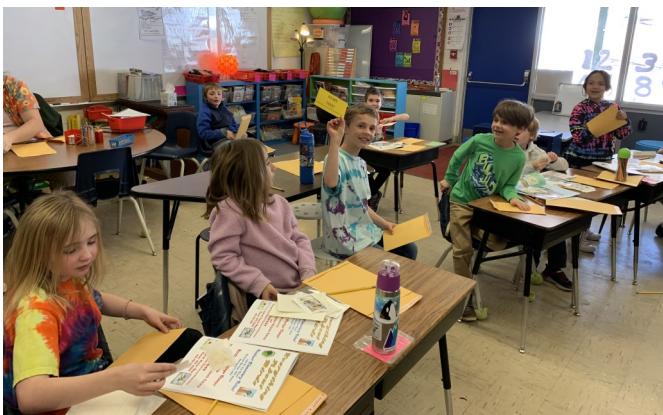
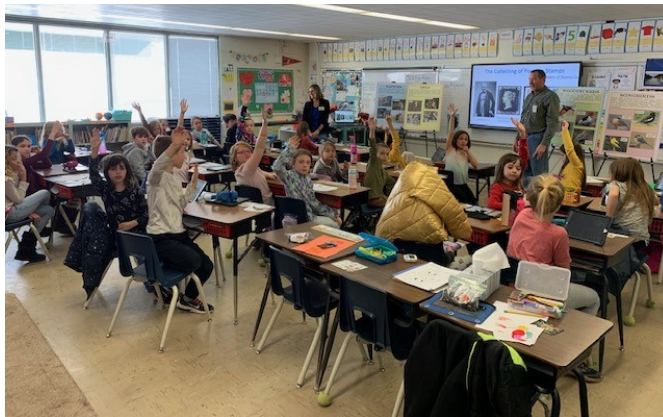
continued from page 5



Regina and Charlie walked around the room and handed each child a large 9" x 12" manila envelope. Each packet contained a 20-page pamphlet consisting of general information on different types of birds with images of postage stamps featuring the birds. The pamphlet had a number of blank pages for mounting postage stamps. Five ballot sheets were included, each ballot sheet had four images of different types of birds found in Colorado. The children were instructed to select the image they liked best on each ballot, fold it up and place the ballot in one of the ballot boxes provided.

Each packet included a smaller 6" x 9" manila envelope containing a couple of bird-related souvenir sheets, first-day-covers, a packet of 15 topical bird stamps and a glassine envelope with stamp hinges. One page of the pamphlet provided instructions on how to use the stamp hinges and mount the stamps in the pamphlet. A number of golden tickets were randomly hidden in the packets. A child finding a golden ticket was rewarded with a complete book of 50 first-day-covers featuring the 1982 state bird stamps.

Dan, Regina and Charlie presented the "Everything About Birds" program to five different first-, second and third-grade classes. A total of 118 packets were handed out. Packets were left with each teacher for



children who were absent from class that day.

We will contact the Citizens' Stamp Advisory Committee and propose a special set of five stamps featuring birds from Colorado for the sesquicentennial statehood celebration in 2026. The suggested stamp designs are based upon the favorite birds selected by the children from Howbert Elementary School.

The CYPHER Stamp Club (Colorado Young Philatelic Explorers and Researchers) has moved into the 21st century.

Visit our new website: Cypherstampclub.com.

Follow us on Instagram (Cypherstampclub) and Facebook (Cypherstamp).

That is no way to Pronounce Niue (Nyoo-Ay)

by Charlie Freise



The island nation of Niue is located in the South Pacific Ocean, about 375 miles northeast of Tonga and 1,340 miles northeast of Auckland, New Zealand. The island is approximately 100 square miles in size, slightly larger than the District of Columbia. Current estimates place the population at 1,636 inhabitants.

In 1960, there were over 5,000 inhabitants residing on the island. The population has experienced a significant decline due to a lack of economic development and opportunity. Today, nearly 18,000 residents of New Zealand claim Niuean ancestry, about 90-95% of the total Niuean population.

Niue is one of the world's largest coral islands. It is comprised primarily of limestone. The island is commonly referred to as "The Rock" or "The Rock of Polynesia." A large plateau dominates the center of the island with an elevation reaching 200 feet above sea level. Limestone cliffs form a coastal terrace around the island center. These cliffs reach heights up to 90 feet and slope down to meet the ocean. A coral reef surrounds the island, the only break in the reef is found along the central western coast close to the capital, Alofi.



Terraced limestone cliffs line the coast of Niue.

Niue, translating to "behold the coconut" was originally settled sometime in the 9th century by people from Samoa. Additional settlers from Tonga arrived in the late 16th century. Captain James Cook was the first European to sight the island, in 1774. He made three attempts to land on the island, but was refused permission on each attempt. The natives who "greeted" him were painted in what appeared to be blood. Their teeth were stained with a red substance, this was from the native red fe'i banana. Captain Cook named the land "Savage Island" due to the less than friendly reception. The title "Savage Island" was used by whaling vessels making regular visits to the island well into the 19th century. Savage Island remained in use until the native name Niue regained popularity.

In 1889, the rulers and chiefs of Niue asked Queen Victoria, "to stretch out towards us your mighty hand, that Niue may hide herself in it and be safe." The British did not take up the offer. In 1900, a petition was submitted by Cook Islanders asking for annexation and to include Niue if possible. The rulers and chiefs of Niue consented to Queen Victoria taking possession of the island in a document dated October 19, 1900. A British Protectorate was declared but this was short lived as Niue, and the Cook Islands, were brought within the boundaries of New Zealand on June 11, 1901. In 1974, New Zealand restored self-government to the island with a new constitution.

In 1902, New Zealand postage stamps were hand-stamped with Niue in green or greenish-blue ink. The first stamps for Niue were issued in 1920 (*figure 1*).

figure 1, a variety of early Niuean stamps.



1902, Niue #1 1903, Niue #7 1917, Niue #16



1920, Niue #25 1932, Niue #43, note the addition of Cook Islands in the top tablet. 1950, Niue #79, note the absence of Cook Islands in the top tablet.

continued on page 8

continued from page 7

Niue continued to use the overprinted stamps of New Zealand until 1946 with the World War II Peace Issue (figure 2). In 1967, four New Zealand coat of arms stamps (PF5, postal fiscal stamp) were overprinted and issued for use on Niue. The upper and lower tablets on the stamps are blank as the values were surcharged on the stamps (figure 3). There are two different perforation varieties of these stamps, perf. 14 and 11. The perf. 11 variety is the more expensive of the two. There is an interesting story behind their creation. The Scott Catalog has a footnote stating, "The perf. 11 stamps were produced when a normal perforating machine broke down and 2,500 of each denomination were perforated on a treadle machine first used by the New Zealand Post Office in 1899." These are the last New Zealand stamps overprinted for use on Niue.



figure 2 - Niue, 1946 Peace Issues, Scott #90 - 93, on a first day cover to Auckland, New Zealand.



figure 3 - Niue, 1967, Scott #116 - 119, New Zealand postal fiscal stamps overprinted and surcharged.



There are fourteen principal villages on Niue, the largest and most populated being the capital, Alofi, with 597 residents (population figures based on 2017 census). The other villages with population estimates follow: Avatele (143), Hakupu (220), Hikutavake (49), Lakepa (87), Liku (98), Makefu (70), Mutalau (100),

Namakulu (11), Tamakautoga (160), Toi (22), Tuapa (112) and Vaiea (115).

New Zealand Post services Niue by airmail from Auckland each Friday. A single postal code (9974), issued by New Zealand in 2017, is used for all addresses on the island. The post office is located in the capital, Alofi. Mail is usually addressed to a post office box number, sometimes only the village name and Niue are used (figure 4). Delivery is only to mailing addresses. Street addresses will be found for the use of couriers or for visitors. Not all streets on Niue are named, many are often referred to in descriptive terms and are unstructured.



figure 4 - examples of how to address mail to Niue (<https://www.grcdi.nl/gsb/niue.html>).

The Niue Philatelic and Numismatic Company was established in 1996. The purpose of the company is to "administer philatelic, numismatic and other revenue earning options and services." New Zealand Post issues stamps for Niue on a regular basis and in 2011, issued a souvenir sheet of two stamps commemorating the wedding of Prince William and Catherine Middleton (figure 5).



figure 5 - Niue, 2011, Scott #864c

The sheet stirred up quite a bit of controversy as the royal couple was split when the stamps were separated.

Second Saturday Programs at the Library

Second Saturday programs are sponsored by the RMPL and attract a friendly group of folks who are interested in a specific subject, or who are interested in learning more about an area of philately that may be new to them. *Contact Jim Kilbane, aurora_80017@yahoo.com, if you are interested in presenting a program.*

May 13, 2023 - 9:00 AM

**Presenter: Jerry Hager
"US Postage Stamps #112-122
and Re-Issues #123-133"**

A PowerPoint presentation touching on the public comments while this first USPS pictorial stamp series was being issued. We will discuss, grid marks and paper types used for the original and reissued stamps. We will explore the unpopularity of the stamp series with the public at the time of issue and how it is now very popular with collectors.



June 10, 2023 - 9:00 AM

**Presenter: Pat McNally
"Count Ferdinand von Zeppelin's
Dirigible "**



Count Ferdinand von Zeppelin was a German general and inventor of the Zeppelin rigid airships. His airships dominated long distance flight until the 1930s.



The First Denver Stamp Club Show

Come out and show your support for your local stamp clubs.

Friday, July 14th 10:00 to 5:00

Saturday, July 15th 9:00 to 4:00

Location

**Veterans of Foreign Wars (VFW)
15625 West 10th Avenue
Golden, CO 80401**

Free Admission - Free Parking

40 Tables - 15 Dealers - Door Prizes

Contact: Ken Luke (303) 598-7198

WYPEX 2023

**Sponsored by
the Cheyenne Philatelic Society**

August 12-13, 2023

Saturday: 9:00 AM - 5:00 PM

Sunday: 9:00 AM - 4:00 PM

**Red Lion Hotel
204 West Fox Farm Road,
Cheyenne, WY 82007
10+ dealers and exhibits**

**Cheyenne Philatelic Society
3rd Wednesday, 7:00 PM
Municipal Building, 2101 O'Neil Ave., Rm. 122
Cheyenne, WY 82001**

New Publications for our Members

UNITED STATES

2023 Sesquicentennial Handbook of the First Issue United States Postal Card 1873-1975: Vol I, by Charles A. Fricke

AFRICA

The Bechuanalands: A Brief History of the Countries and Their Postal Services to 1895, by Adrian Albert Jurgens

A Celebration of the Philately of the Union of South Africa: A Souvenir Booklet to Commemorate the Centenary of the Establishment of the Union of South Africa 1910-2010

A Chronology of the Postal Slogans of South Africa, by S.J. Vermaak

The Discovery of the Cape of Good Hope: 1486, (exhibit) Bartholomew Dias

Early Postal Services at the Cape of Good Hope, (exhibit)

Forerunner Postal History of Basutoland, (exhibit)

Indian Expeditionary Forces Postal Service in East Africa During World War I, (exhibit) by Joseph D. Schwartz

The Introduction and Usage of Postal Orders in Bechuanaland Protectorate, by Peter Thy

The Mobile Post Offices of South Africa: The Postmarks, Registration Marks and Cachets, 1937 - 1983, by W. A. Page

An Illustrated
Visitors Guide to
Bloemfontein

A South African Postcard Exhibit

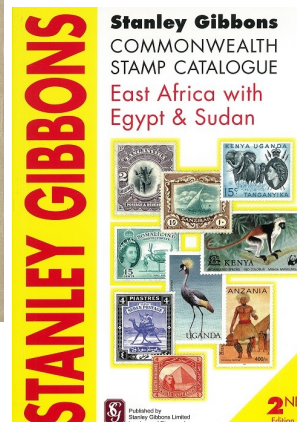
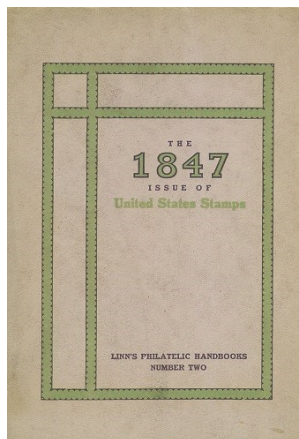


R. Timothy Bartshe

Orange Free State
Postal Cards of
1884-1900



R. Timothy Bartshe



AFRICA (continued)

The New Republic [Natal]: 1884 - 1888, by Gerrit H. Jonkers

The Overprinted Stamps of South West Africa to 1930, by Natie Becker

Rhodesia: 1910 Double Heads, (exhibit) by Alan J. Hanks

Rhodesian Post Offices: Where and When, by W. F. Calder

The Special and Commemorative Postmarks, Cachets and Covers of South Africa: 1892 - 1975, by Hasso O. Reiserer

The Stamps of the Orange Free State: Part I, The Republican Era 1854-1900, by G. D. Buckley and W. B. Marriott

The Surcharging of Rhodesia's Mail, 1965 - 1971, Swaziland, (exhibit) by D. A. Mitchell and H. T. Tring

Les Timbres de Natal, par L. H. J. Walker and J. B. Moens

Translations from Kohl's Handbook: The Bechuanalands, South Africa, by H. Munk

Union of South Africa: Silver Jubilee "flaws," (exhibit)

World War II Philately of Southern and Eastern Africa, by J. H. Harvey Pirie

New Publications for our Members

EUROPE

Our Services (Great Britain General Post Office)

POSTCARDS

Boy Scout Postcards in the United States (CD), by Stanley H. Lipson

Catalogue of the Postcards of Southern Africa: Vol. 1, Sallo Epstein, by Martin P. Nicholson

MISCELLANEOUS

Die Jagdfiskalwertzeichen [Hunting Fiscal Stamps], von Ungarn von Joachim Hosang

Philatelic Royalty of the 20th Century: Stories Behind Modern-era U.S. Treasures, by John Hotchner

The Stamp Machines and Coiled Stamps, by George P. Howard

NON-PHILATELIC (Railroads)

Baldwin Locomotive Works: Record of Recent Construction nos. 21 to 30 Inclusive

Big Boy, by William W. Kratville

Business and Special Purpose Cars (Santa Fe Railway)

Chasing the SP in California: 1953-1956, by Rod Crossley

Diesel Locomotive Rosters: The Railroad Magazine Series of Early-power Rosters with Information on Locomotives of 484 roads, 1930s to 1960s

Doodlebug Country: The Rail Motorcar on the Class I Railroads of the United States, by Edmund Keilty

From Zephyr to Amtrak: A Guide to Lightweight Cars and Streamliners, compiled by David Randall

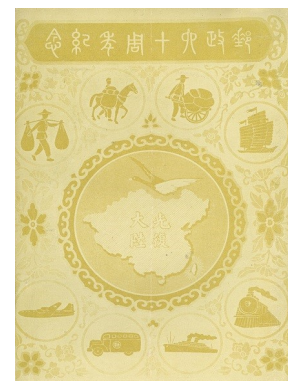
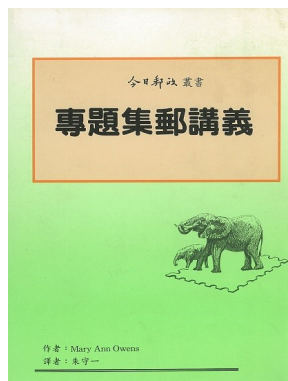
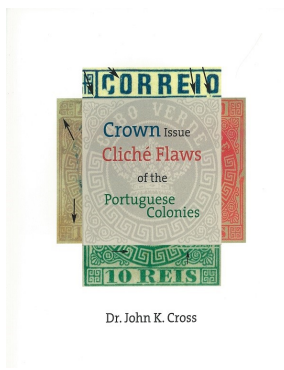
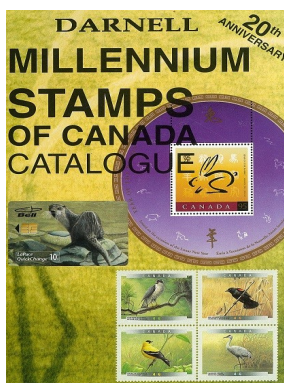
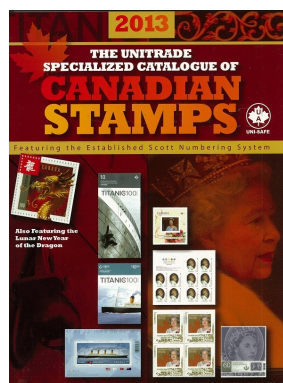
The Legendary Line: Durango to Silverton, a Photo Album

Narrow Gauge Railway Scenes, by Adolf Hungry Wolf

The Omaha Road: Chicago, St. Paul, Minneapolis and Omaha, by Stan Mailer

Pullman and Private Car Pictorial

Railroad Work Equipment and Special Service Cars, by Robert J. Waynor



New Publications for our Members

NON-PHILATELIC (Railroads)

Rails Across Britain: Thirty Years of Change and Colour, by David Cable

Robert W. Richardson's Rio Grande: Chasing the Narrow Gauge, Vol. I, II and III, by Robert W. Richardson

Rotary Snowplows on the Cumbres & Toltec Scenic Railroad, by Joseph P. Hereford, Jr.

Santa Fe's Diesel Fleet, by Joe Mc Millan

Southern Pacific Narrow Gauge Locomotives and Freight Equipment: Also Including the Carson & Colorado Railroad and the Nevada & California Railroad, 1880-1960, by Robert A. Bader

Southern Pacific Railroad, by Brian Solomon

Southern Pacific's Golden Empire, 1954 - 1958: The Color Photography of John B. Hungerford and Harold F. Stewart

Union Pacific Railroad: Passenger Trains of the City Fleet, Photo Archive, by John Kelly

Union Pacific's West, by Donald Sims

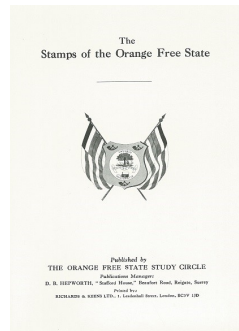
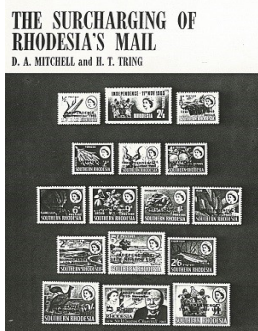
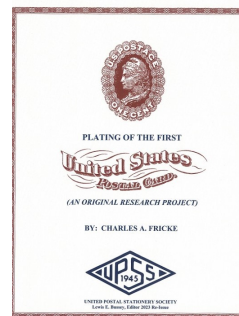
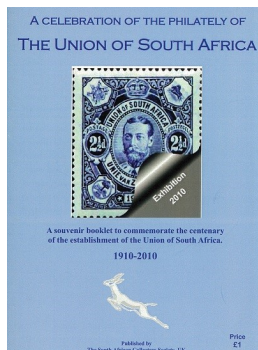
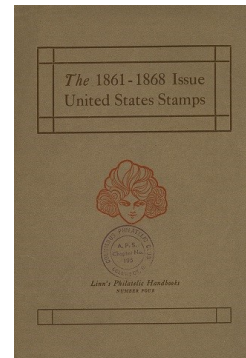
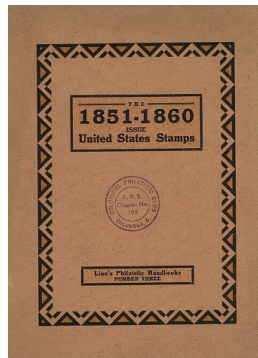
Union Pacific System: Steam Locomotive Roster 1915 - 1995, by Gordon McCulloh

Union Pacific Nebraska Depots: and a few Other Structures, by James L. Ehernberger

Union Pacific Big Boys in Action, by James J. Reisdorff and Michael M. Bartels

The West the Railroads Made, by Carlos A. Schwantes and James P. Ronda

Work Equipment Cars (Santa Fe Railway), by W. W. Childers



FILATELIA e...



SPORT UNIVERSITARIO

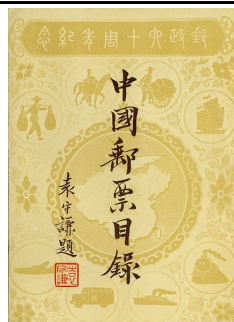


dalle origini a tutto il 1991

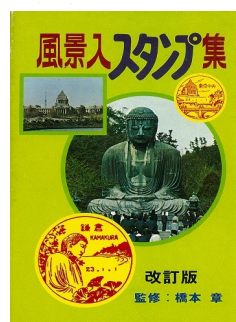
Machin Collectors Club
Specialised Machin
Catalogue

Copyright Notice
The contents, illustrations and layout of the Machin Collectors Club Specialised Machin Catalogue are fully protected by copyright. No part of this work may be reproduced, stored in a retrieval system, or transmitted in any form or by any means, electronic, mechanical, photocopying, recording or otherwise, without the prior permission of the Machin Collectors Club. Copyright in numbering systems and illustrations held by other parties are acknowledged elsewhere.

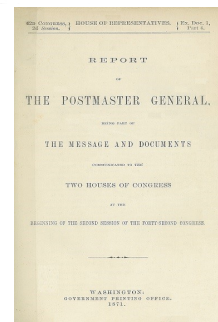
Produced by Jeremy Mills, Publishing Limited
The Mill House
22 Occombe Road
London
Hendon, Middlesex
Telephone 01895 421474
Fax 01895 421606
Printed by Reprographics Press, Ltd.



James G. Reisdorff
18 January 2021



改訂版
監修：橋本章



Legend of Mahabalipuram

The Seven Pagodas of Mahabalipuram

by Charlie Freise

The south Indian city of Mamallapuram is located in the state of Tamil Nadu, on the Coromandel Coast of the Bay of Bengal, about 40 miles south of Chennai. Mamallapuram (mamalla means great wrestler and relates to the 7th century King Narasimha Varman I) was previously called Mahabalipuram. The city is the



location of the UNESCO World Heritage Site - the Seven Pagodas of Mahabalipuram.

Legend has it that sometime in the 8th century Narasimhavarman II had a group of seven temples built along the shore of the Bay of Bengal. The temples, with their bas-

reliefs, pagodas and statuary were so beautiful that it made the god Indra jealous of the earthly city. Indra conjured up a great storm and sank the city leaving only the Shore Temple remaining above sea level.

The Shore Temple, the sole remaining Pagoda, is a complex consisting of 40 religious monuments and temples including one of the largest open-air rock reliefs in the world, Arjuna's Penance (Descent of the Ganges).



There are multiple categories of monuments found at Mahabalipuram, most were built in the early 7th to early 8th centuries. The ratha temples were built between 630 and 668 AD. They feature a monolithic procession of chariots. The "mandapa viharas" (cave temples) feature carved narratives and script from the Mahabharata (a Sanskrit epic poem and source on the development of Hinduism) and Shaivite (a principal form of Hinduism based upon the teachings and traditions of the worship of the god Shiva). The cave temples are inscribed in a number of different Indian lan-

guages. The stunning open-air rock reliefs and stone cut temples were built between 695 and 722 AD. Some archeological excavations have revealed material dating to the 6th century or earlier.

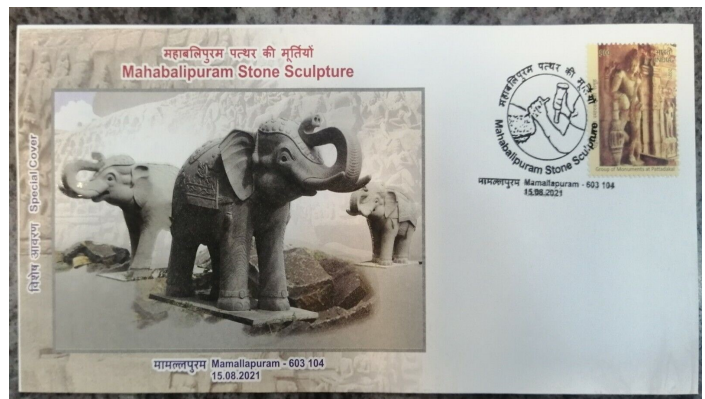
Marco Polo made mention of the "Seven Pagodas" on his way back to Venice from southeast Asia (1271-1295) but never visited the site. European sailors and merchants first made mention of the site in the 16th century. The site was brought to the attention of European scholars in William Chambers' 1788 literary survey of Mahabalipuram.

Restoration on the Shore Temple site began in 1960 and the Indian government continues to actively participate in ensuring the protection, preservation and excavation of the historic site (figure 2).



figure 2, India, 1983, Scott #1013, The Shore Temple at Mahabalipuram

Rumors of there being seven pagodas have existed for centuries. Despite extensive archeological surveys and excavations, no evidence of additional constructions was ever found. A tsunami struck the Indian Ocean and Bay of Bengal in 2004. The tsunamic caused the waters in the Bay to recede about 1,650 feet. Locals and tourists reported seeing a straight row of rocks before the waters covered everything up again. The tsunami disturbed centuries-worth of sediment and revealed previously unknown statues and small structures.



India, 2020, Scott #3233, Monuments at Pattadakal stamp on a special commemorative cachet cover featuring elephant statuary found at Mahabalipuram.

RMPL Board of Directors Meeting

Board of Directors Meeting March 16, 2023

Board Members Present: Eric Carlson, Jim Kilbane, Rich Palestro, Steve Schweighofer, Tonny Von Loij, Paul and Regina Domenici, Bill Douglass and Gary Withrow. Attendance via ZOOM: Rod Haenni. Visitors: Joe Lanotte, Ken Luke, Paul Lee, and John Peters

The meeting was called to order at 3:51 pm.

Treasurer (Bill): presented the detailed statement of YTD financials which was approved by the Board.

As of February 28, 2023:

First Bank Checking account: \$62,832
 First Bank Savings account: \$50,000
 Vanguard account: \$309,544
 Current assets: \$425,195
 Fixed assets: \$ 324,478
 Total assets: \$767,673

OLD BUSINESS

February Country Lots Auctions (Paul and Gary): Final data will be posted next month. The preliminary findings show a gross revenue of \$23,300 with net proceeds totaling \$18,000.

Special Delivery of Dreams Scholarship (Gary, Regina and Rich): 132 applications were received from the RMPL scholarship page on BOLD.org. These were reviewed by the committee. Biographies from the top five finalists were presented for Board approval. Two winners were selected and will be announced on March 31. BOLD.org will notify the winners and disburse 100% of the RMPL scholarship funds directly to the winning candidates' schools.

Policy and procedure manual (Eric): Reported the manual has been established and will be amended as needed. The document is available at the front desk.

Purchase of automatic external defibrillators (AEDs) (Ken): Presented information for obtaining Zoll AEDs for each building in the event of cardiac arrest at the Library. Bill Douglass has a contact that may be able to provide training, or we can pursue options with Red Cross. Tonny reports that there will be

some type of insurance savings once the AEDs are installed. A motion was approved to purchase two Zoll AEDs and arrange for the appropriate training as long as the insurance can verify there is no liability to the RMPL.

Increased utility bills: Tonny will follow up with the suggestion to investigate the cost vs. benefit of solar panel installation. Paul volunteered to contact XCEL Energy for an energy audit.

NEW BUSINESS

Board elections for 2024 term: The President will select three RMPL members to form a nominating committee to oversee the upcoming Board election.

Request for book publication: Paul Lee has added information and rewritten his 2016 book: *Parks, Postmarks and Postmasters* (Topic: post offices within the national park system). He requested Board consideration to publish the revised edition. Motion approved to establish a publication committee under the leadership of Jim Kilbane.

New RMPL Website: The new Library website is rockymountainphilatelibrary.org. The website contact information includes the main library email address which is monitored by Tonny and Steve. Specific email requests will be forwarded to the correct contact based on the inquiry. A discussion without resolution was held regarding a "members only" section on the website. The topic was tabled until the next meeting. Special thanks to Joe Lanotte and Gary Withrow for their time and expertise in establishing an excellent professional RMPL website.

The meeting adjourned at 5:27 PM.

Next meeting is May 18, 2023.

Respectfully submitted,

Regina Domenici
 Recording Secretary

DONATIONS

The library thrives on the enthusiasm and generosity of its members. The following societies, clubs, and individuals made donations to the Library since the last donation listing. These donations were made from January 20, 2023 through March 12, 2023. Thank you!

INDIVIDUAL DONATIONS

Estate Of Kathy E. Lawrence

| | |
|-------------------|-------------------|
| Anonymous | Paul Lee |
| Ella Albertson | Michael Ludington |
| Marc Anderson | Clark Lyda |
| George Anema | Pete Mang |
| Lorrie Bade | Steve McGill |
| Jackie Beem | Dasa Metzler |
| Jonathan Bennett | Helen Milam |
| Sewell W. Black | Bruce Morgenstern |
| John Bloor | Andrew Murin |
| Roger Cichorz | Joe Murpy |
| John Cross | Nancy Nelson |
| Edwin De Smith | Alexander Papp |
| Kelly Eigenberger | James Reichman |
| Nolan Flowers | Bill Schattle |
| Anna Frost | Martin Severe |
| James Gerson | Robert Thompson |
| Robert Gibson | John Trego |
| Edward Hackstaff | Richard Truly |
| James Hofsetz | Edward Wade |
| David Kennedy | Joseph Wilcox |
| Chris Kostanick | Gary Withrow |

NOTES FROM THE EDITOR

In this issue of *Scribblings* there is an article on the highly successful "Everything About Birds" program held at the Howbert Elementary School. This was possible through the efforts of Regina Domenici, Dan Nieuwlandt and Charlie Freise, volunteers and mentors with the CYPHER Stamp Club.

The continuing call for volunteers appears in every issue of *Scribblings*. It may seem repetitive and tiresome to some; unfortunately it is an absolute necessity. We have seen new volunteers step forward enabling the Library to expand its hours of operations.

While volunteers are always needed we must begin to focus on increasing Library membership. If you are unable to volunteer your time why not speak to fellow collectors and friends about the RMPL? Emphasize the benefits of having a philatelic library so near as well as the plethora of local stamp clubs that will benefit from increased membership. Help the hobby and Library. Spread the word.

Charlie Freise

NEW MEMBERS

We extend a warm welcome to new members who have joined the library from January 16, 2023, through March 15, 2023.

Michael Burnham, Denver, CO - Collects US 19th century and BOB including cut squares.

Please Note: New members and membership renewals received after March 15, 2023, will be acknowledged in the next issue of *Scribblings*.

NOTES FROM THE LIBRARIAN

The following article appeared originally in the *Old Librarian's Almanack* of 1774. This does not reflect the attitudes or policies of the RMPL, at least for now.

Sherri Soraci-Jennings

“So far as your Authority will permit of it, exercise great Discrimination as to which Persons shall be admitted to the use of the Library. For the Treasure House of Literature is not more to be thrown open to the ravages of the unreasoning Mob, than is a fair Garden to be laid unprotected at the Mercy of a Swarm of Beasts.

Question each applicant closely. See that he be a Person of good Reputation, scholarly Habits, sober and courteous Demeanor.

Any mere Trifler, a Person that would Dally with Books, or seek in them shallow Amusement, may be Dismiss'd without delay.

No person younger than 20 years (save if he be a Student, of more than 18 years, and vouched for by his Tutor) is on any pretext to enter the library.

Let no Politician be in your Library, nor no man who Talks overmuch. It will be difficulty for him to observe Silence, and he is objectionable otherwise, as well. No Astrology, Necromancer, Charlatan, Quack, no Humbug nor vendor of Nostrums, nor Teacher of false knowledge, no fanatic Preacher nor Refugee.

Admit no one of loose or evil life, prohibit the Gamester, the Gypsey, the Vagrant.

Allow none who suffers from an infectious Disease: and none whose Apparel is so gaudy or eccentric as to attract the Eye.

Keep out the Light-witted, the Shallow, the Base and Obscene.

See to it that none enter who are Senile, and none who are immature in their Minds, even tho' they have reach'd the requir'd Age.”

Scheduled Library Events



The RMPL Operations Manager, Steve Schweighofer, maintains a calendar of reserved club times. Clubs should check the calendar regularly and notify Steve (steve.schweighofer@comcast.net) of any updates or changes. Requests to reserve meeting space and time for philatelically related meetings other than those listed here must be approved and scheduled with Steve well in advance. Call the Library or the appropriate club to confirm the place and time.

Hours of Operation:
 Mon - Sat: 10:00 AM - 2:00 PM
 Thu: 5:00 - 8:00 PM
 Closed Sundays and Holidays
 Phone: (303) 759-9921
 Email: rmp1@qwestoffice.net

MAY 2023

- May 6 Sat** - meeting 10 AM
Scandinavian Collectors Club
- May 6 Sat** - meeting 1 PM
Topical Philatelists In Colorado (TOPIC)
- May 10 Wed** - meeting 7 PM
Denver Germany Stamp Club
- May 11 Thu** - meeting 2 PM
Cherrellyn Stamp Club
- May 13 Sat - 9AM**
Second Saturday at the RMPL
 Presenter: Jerry Hager
"US Postal Stamps #112-122 and Re-Issues #122 - 133"
- May 13 Sat** - meeting 10:30 AM
Mexico/Latin America Club
- May 14 Sun** - meeting 1 PM
Denver Postcard Club
- May 17 Wed-** meeting 2 PM
Denver Stamp Club
- May 18 Thu-** meeting 4 PM
RMPL Board of Directors (visitors welcome)
- May 20 Sat** - meeting 9:30 AM
CYPHER Stamp Club
- May 21 Sun** - meeting 1 PM
Great Britain and Commonwealth Collectors Club
- May 22-24 Mon-Wed** -10 AM - 2 PM
Rocky Mountain Stamp Show auction viewing at RMPL meeting room
- May 25-27 Thu-Sat - Library is closed during the Rocky Mountain Stamp Show**
- May 26-28 Fri-Sat - 10 AM - 6 PM**
Sun - 10 AM - 3 PM
 Rocky Mountain Stamp Show at the Arapahoe County Fair Grounds
- May 27 Sat** - meeting 1 PM
Colorado Postal History Society at the Rocky Mountain Stamp Show at the Arapahoe County Fair Grounds

JUNE 2023

- Jun 3 Sat** - meeting 10 AM
Scandinavian Collectors Club
- Jun 3 Sat** - meeting 1 PM
Topical Philatelists In Colorado (TOPIC)
- Jun 8 Thu** - meeting 2 PM
Cherrellyn Stamp Club
- Jun 10 - 9 AM**
Second Saturday at the RMPL
 Presenter: Pat McNally
"Count Ferdinand von Zeppelin's Dirigible"
- Jun 10 Sat** - meeting 10:30 AM
Mexico/Latin America Club
- Jun 10 Sat** - meeting 12:30 PM
Rocky Mountain Aero and Astrophilately Club
- Jun 11 Sun** - meeting 1 PM
Denver Postcard Club
- Jun 14 Wed** - meeting 7 PM
Denver Germany Stamp Club
- Jun 17 Sat** - meeting 9:30 AM
CYPHER Stamp Club
- Jun 18 Sun** - meeting 1 PM
Great Britain and Commonwealth Collectors Club
- Jun 28 Wed** - meeting 2 PM
Denver Stamp Club

MARK YOUR CALENDAR !

**Denver Stamp Club Show
July 14-15, 2023**

**WYPEX 2023
August 12-13, 2023**

**RMPL 30th Anniversary
"Open House"
August 26, 2023**