



S c r i b b l i n g s

...from the Rocky Mountain Philatelic Library

Sherri Soraci-Jennings, Librarian

Vol. 30 - No. 5
www.rmpldenver.org

2038 South Pontiac Way, Denver, CO 80224-2412
(303) 759-9921

September / October 2022
Email: rmpl@qwestoffice.net

IN THIS ISSUE

Kangaroo and Map Stamps of Australia

by Charlie Freise 1

President's Message

by Tonny Van Loij 2

General Notices 3

17th Annual RMPL Large Lots Auction

..... 3

Covering the World

by John Bloor 9

Second Saturday Programs

Maps on Stamps and Related Topics

by Steve Nadler 10

"La Semeuse - the Story of a Common Series of old French Stamps"

by Jerry Hager 10

New Publications for our Members..... 11

Board Minutes

July 28, 2022..... 14

Notes from the Librarian

..... 15

Notes from the Editor 15

New Members 15

Donations..... 15

Calendar of Events 16

The Kangaroo and Map Stamps of Australia

By Charlie Freise

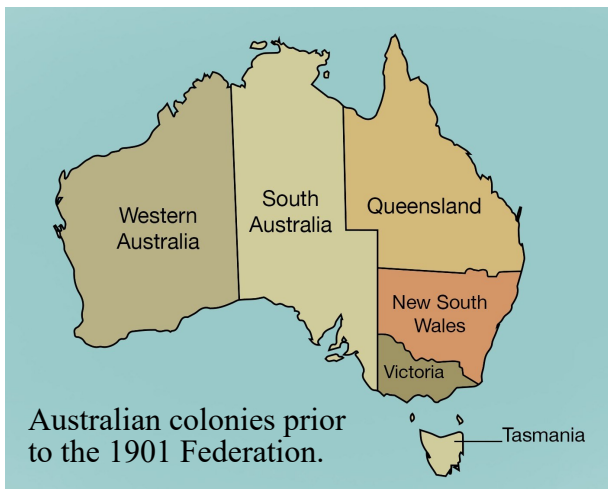


Examples of stamps that have become symbolic representations of a specific country are not common. Probably the most recognizable stamp that fits this category is the "Penny Black." One quick glance at the stamp is all it takes to identify the country of origin. This can also be said for the Kangaroo and Map stamps of Australia, commonly referred to as "Roos." This understated stamp is found in nearly all worldwide collections. The design features an empty map of Australia with a kangaroo in the center. Initially the stamp was publicly reviled. With the passage of time it has become a classic stamp, widely collected and a national icon.

A little background is necessary to understand the importance of the Kangaroo and Map stamp in the philatelic history of Australia. The stamps and postal history of Australia are commonly divided into two distinct periods.

The first period covers the years prior to the establishment of the 1901 Federation when the British colonies of New South Wales, Queensland, South Australia, Tasmania, Victoria and Western Australia operated independently. The six self-governing colonies were subject to the British Parliament but each colony had its own laws, railway gauge, tariffs, postage stamps and postal rates.

Initial discussions began in the 1880s concerning the federation of the colonies into a unified country. It was not until 1899 that a final draft bill was approved by five of the six colonies. Western Australia resisted federation for some time and did not vote on the issue until late July 1900. Western Australia approved the measure only when inducement was offered to the colony with a promise the new Commonwealth government would build a railway link to the eastern states.



Australian colonies prior to the 1901 Federation.

(continued on Page 4)

Scribblings

Newsletter of the Rocky Mountain Philatelic Library

2038 South Pontiac Way
Denver, CO 80224

Phone: (303) 759-9921

Email: rmpl@qwestoffice.net

Web Page: www.rmpldenver.org

Instagram: The RMPL

Hours: Monday - Saturday 10:00 AM - 2:00 PM
Closed Sundays and Holidays

Librarian

Sherri Soraci-Jennings

Library Officers

President:	Tonny Van Loij
Vice President:	Jim Kilbane
Operations Manager:	Steve Schweighofer
Stamp Manager:	Dasa Metzler
Corresponding Secretary:	Paul Domenici
Recording Secretary:	Regina Domenici
Treasurer:	William Douglass
Bookkeeper:	Eddie Hackstaff

Directors:

Eric Carlson	Rod Haenni
Rich Palestro	Gary Withrow

Ex-officio member: Don Dhonau

Editor

Charlie Freise

Copy Editors / Proofreaders

John Bloor	Paul Domenici
Roger Rydberg	Steve Schweighofer

Sherri Soraci-Jennings

Scribblings is published bimonthly by the Rocky Mountain Philatelic Library. The RMPL is a chartered Colorado nonprofit corporation and is an IRS-designated 501(c)(3) charitable organization. Membership subscriptions over that for the contributing membership, and donations of appropriate philatelic materials, may be deductible for US income tax purposes. The Library is a volunteer organization. Financial donations, philatelic books, stamps, supplies and donations of your time are welcome. The Library Bylaws are available for review at the Library or you may obtain a copy upon request.

A basic membership with the RMPL is \$25 per year and includes book checkout privileges and six issues of *Scribblings*. Call for more information.

Officers and Directors may be contacted through the RMPL.

From the Desk of the President - by Tonny Van Loij



I hope everyone is doing OK, COVID 19 seems to have slowed down some. Restrictions have eased up even with the tourist rush here and abroad. I hope some of you, like me, will be traveling and visiting some of the local stamp shows.

Our annual auction at the Rocky Mountain Stamp Show 2022 went very well thanks to all those whom participated. The Library auctions are one of our primary sources of income. Without this funding source we could not keep the doors open.

New material is donated to the Library on a weekly basis. Depending upon the circumstances we can place donated material in future auctions. Based upon guidance from the IRS some donated material must be held for a period of three years. Everyone can look forward to some good material in the upcoming auctions. Enclosed with this mailing is the 17th Annual Large Lots auction catalog. Please take a look through the catalog, you might find a treasure looking for a new home. Remember the golden rule of auctions, "bid high and bid often."

In this issue of *Scribblings* you will find the repeated request for volunteers. Due to staffing shortages, the Library had to reduce the hours of operation this year. My thanks to all volunteers and members who support the Library. We are specifically looking for additional volunteers to assist on the front desk. If you are interested in volunteering a few hours a week please contact the Library and speak to Paul Domenici or leave a message. He will return your call.

Enjoy the summer and stay healthy.

Tonny Van Loij

HOURS OF OPERATION

**The Library will be closed
September 5, 2020 in
recognition of Labor Day.**

In the event of inclement weather the library may close unexpectedly. Prior to venturing out, particularly when it is snowing, it is advisable to call ahead and make sure the Library is open.

GENERAL ANNOUNCEMENTS

LIBRARY VOLUNTEERS WANTED

Additional help is needed in almost every area of RMPL operations, especially back-ups for publishing and stamp mart operations. If you are interested in becoming more active with the RMPL, whether it is helping publish *Scribblings*, sorting donations for our stamp mart, or helping with library maintenance, please contact the Library at 303-759-9921.

2023 ROCKY MOUNTAIN STAMP SHOW

This is the first call for volunteers to step up to the plate and commit a few hours of their time to help at next year's stamp show. We have had a number of individuals come forward for the 2022 RMSS and this was greatly appreciated. However, additional volunteers are needed to manage the registration desk, assist with floor management, help with cachet sales and we need a hearty team to set up and take down the exhibit display frames. Please contact Ron Lampo at chairman@rockymountainstampshow.com for more information on volunteering.

SECOND SATURDAY PROGRAMS NEEDED

Sponsored by the RMPL, the Second Saturday programs are generally about an hour long and focus on a specific subject. The subject matter is not limited to philately. Attendance is open to anyone who has a desire to learn something new about a specific subject, or enjoys discovering something new about an area of philately unfamiliar to them. Please contact Jim Kilbane at: aurora_80017@yahoo.com for more information.

BOOKKEEPER WANTED

The Library is searching for a new bookkeeper. The position requires an individual with good computer skills and familiarity with QuickBooks for non-profits. If you are interested or know of someone interested in the position, please call 303-759-9921.

ARTICLES WANTED

The deadline for article submissions for the next issue of *Scribblings* is September 30, 2022. Please send your articles to Charlie Freise, vapid1000@gmail.com

17th Annual RMPL Annual Large Lots Auction **A LIVE AUCTION**

Presented by The Rocky Mountain Philatelic Library
(This is a "one-session" auction)

**NO BUYERS
PREMIUM!**

Location: Meeting Room
2048 S. Pontiac Way, Denver, CO 80224

**OVER 250
LOTS!**

Beginning at 11:00 AM
Saturday, October 22nd, 2022

Over 250 lots consisting of stamps, covers, albums, pages, stock books, commemorative collections, bulk lots of covers, thematic collections, various supplies, books, ephemera and our famous pickle jars of stamp accumulations.

The catalog and scanned images of lots are available for viewing anytime at:

www.rmplauctions.org

(continued from Page 1)

The Commonwealth of Australia Constitution Act 1900 (UK) was passed by British Parliament on July 5, 1900. Queen Victoria gave royal assent to the legislation five days later, to become effective on January 1, 1901. The new constitution divided the power between the federal government and the governments of the new states. Specific areas of legislative power were given to federal government - but not for the first 10 years or so. This meant that the states could retain revenues for a while longer including, taxation, defense, foreign affairs, migration, naturalization and telecommunications services as well as postal rates and services.

Technically the first set of stamps released for national use is a set of postage due stamps issued in 1902. Additional printings followed in 1902-1904 and 1908-1909 (Figure 1).



Figure 1, left to right:
 1902, Scott Catalog #J6, 6p, white field at bottom.
 1903, Scott Catalog #J20, 5s, frame fully colored.
 1908, Scott Catalog #J37, 10s, watermark type 12.

Uniform postal rates were introduced in 1911, but the stamps issued by the individual states continued to be used throughout the nation until 1913. The new Kangaroo and Map stamps were released beginning on January 1, 1913 with values ranging from 1/2d to £2 (Figure 2).

While the stamps are popular with collectors today, the history behind the design selection is troubled. In 1911, the government announced a Commonwealth Stamp Design Competition to find a suitable design for the first set of stamps. More than 500 artists took part in the contest and they produced more than 1,000 individual entries. Three designs were selected to receive cash prizes and Herbert Altmann, from Melbourne, was awarded first prize (£100) for his design. His entry featured a portrait of King George V flanked by a kangaroo and emu with small shields bearing the arms of the six states. The second and third prizes were also awarded to two kangaroo designs.



Figure 2, 1913, Kangaroo and Map Stamps:
 Row 1, Scott #1 - 1/2d, Scott #2 - 1d, Scott #3 - 2d
 Row 2, Scott #4 - 2 1/2d, Scott #5 - 3d, Scott #6 - 4d
 Row 3, Scott #7 - 5d, Scott #8 - 6d, Scott #9 - 9d
 Row 4, Scott #10 - 1s, Scott #11 - 2s, Scott #12 - 5s
 Row 5, Scott #13 - 10s, Scott #14 - £1,
 Scott #15 - £2.

(continued on Page 5)

(continued from Page 4)

Postmaster General Charles Frazer refused to accept the submitted design and he commissioned a local artist, Blamire Young, to produce a new series of designs. His first essays were considered unsuitable. Frazer asked Young for a design combining ideas taken from some of the competition entries and his own ideas (Figure 3).



Figure 3, 1911, G. R. Unthank 2½p Map and Kangaroo entry for the Stamp Design Competition. The original entry was photographic with a stamp-sized reduction at the bottom right as required by the number "94" at the top is the competition entry number assigned by the Post Office.

(Shreves Philatelic Galleries, Sale #89, Lot #44.)

Young submitted a final design in January 1912 featuring an outline map of Australia with a kangaroo inside it. It is disappointing that no records survive of the final designs submitted by Young. With no surviving records there is no way to determine how much of the Kangaroo and Map design is his own creation and how much was a compilation of designs submitted other competitors. Perhaps for this reason, the design is never attributed to a single person although Young is mentioned most prominently.

Samuel Reading, an engraver working in Melbourne, prepared the die for the new series of stamps. The stamps were typographed by J. B. Cooke. The design went through a series of changes, most notably one from a horizontal to vertical format. It is significant to note that the stamps were not produced by any of the major overseas printers. They were designed, printed and perforated in Australia. The fifteen stamps were released throughout 1913, the 1d being released first on January 2, 1913 (Figure 4). Further printings were released with different colors, perforations, and watermarks from 1913 through December 1945.

Initial reactions to the new stamp series was less than complimentary. One letter to a newspaper said, "The design is delightfully truthful. . . an empty land with nothing but kangaroos in it. The kangaroo, quickly sketched, looked like rabbit." Others accused the government of being unpatriotic due to the lack of any reference to the monarchy."

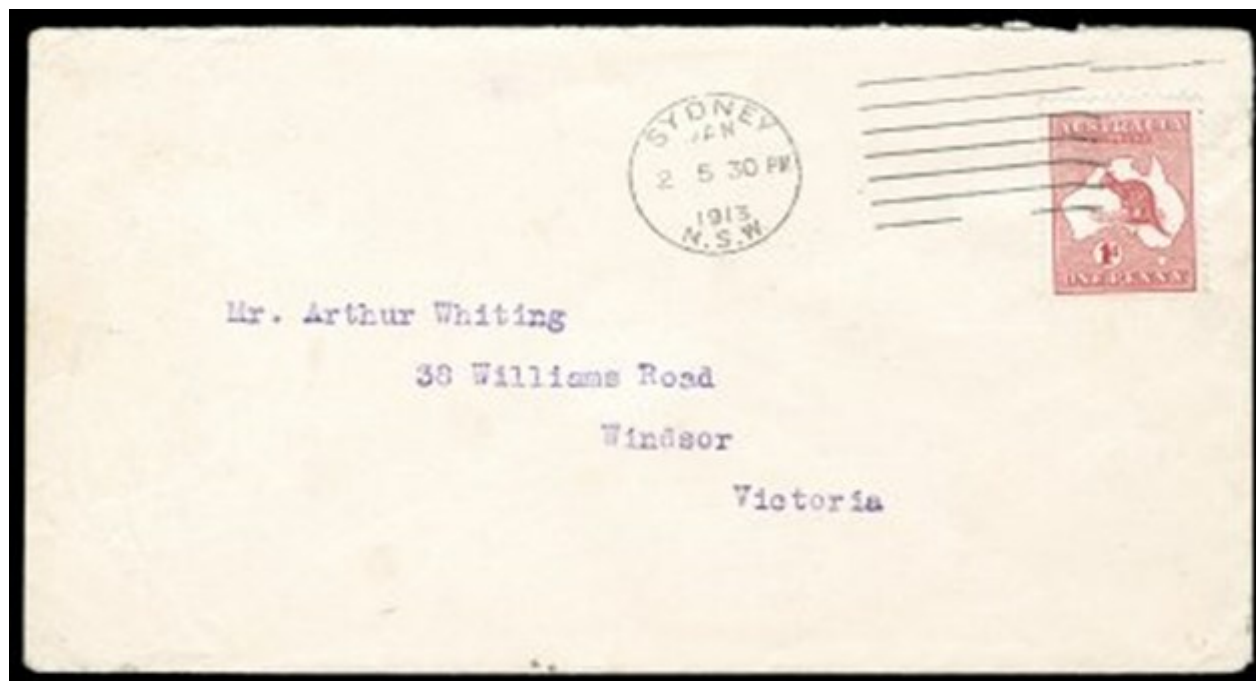


Figure 4, Shreves Philatelic Gallery, Sale 89, Lot #81, Scott #2, 1d red Kangaroo and Map first-day cover. Approximately eleven first-day covers are recorded, two of which are in the Australia Post archival collection and one in the Royal Collection.

(continued on Page 6)

(continued from Page 5)

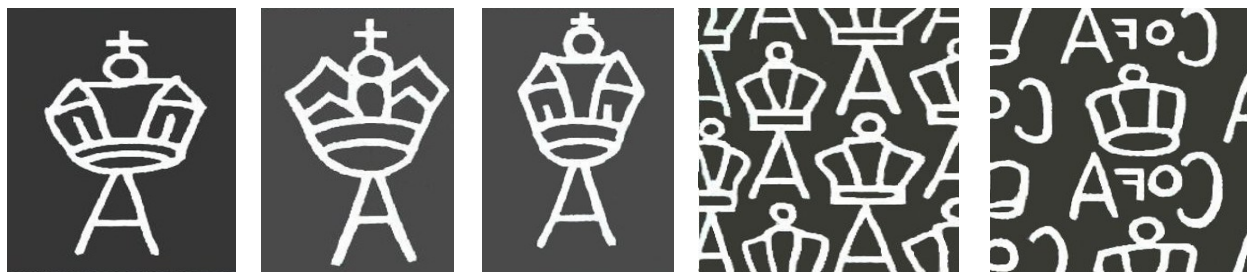


Figure 5, watermarks found on the Kangaroo and Map stamps.
Left to right: Scott watermark types 8, 9, 10, 203 and 223.

Here are additional contemporary quotes related to the new Kangaroo and Map stamp:

"Our postage stamps go all over the world, they become, in the course of time, a sort of national symbol; and it is therefore very annoying to find that our country is to be represented in the eyes of the world by a grotesque and ridiculous symbol, and that she will be a laughing stock even to childish stamp collectors of every nation." (*Argus, Melbourne, April 1912*).

"Many clever draughtsmen contributed designs, and the result is forthcoming, it has been printed, it is as dull, flat, ugly and brainless as the dullest bourgeois could desire (...) The result is simply childish, it represents a child's taste, a child's mind." (*Punch, Melbourne, April 1912*)

The basic Kangaroo and Map stamps are perfect for the beginning collector. This moderately sized set with a wide range of values and colors is priced well within the reach of most collectors. As usual, the higher values are exceptions and carry hefty price tags. If the advanced collector is not challenged by the basic stamps there is a long list of collectible varieties that are a daunting challenge to complete.

The Kangaroo and Map stamps include varieties in gauge 11½, 12 and 13½ x 12½ perforations; five different watermarks (not counting inverted and sideways watermarks); countless color varieties; four different die types; and a plethora of town cancellations including some very pricey CTO cancellations.

Nine different watermarks were used on the different stamps of Australia. Five of the nine watermark types are found on the "Roos" (Figure 5).

Scott watermark type 8, featuring a wide crown and wide letter "A" is found on all of the 1913 Kangaroo and Map stamps. From 1913 through 1915 a number of the stamps were reprinted with Scott watermark type 9, having a wide crown with narrow letter "A." Scott watermark type 10 with a narrow crown and

narrow letter "A" is found on the 1915 through 1925 printings.

The 1931 through 1936 issues were printed using paper with Scott watermark type 203 having multiple small crowns and letters "A." The final Kangaroo and Map stamp, a 2/- dark red-brown color, released in 1945 was printed with Scott watermark type 228, distinguishable by multiple small crowns and "C of A" lettering.

If collecting the different watermark types is not difficult enough then perhaps the four die type varieties might prove to be more challenging. The table below (Figure 6) provides some basic information on the die types found on specific denominations. Before starting down this path, be advised some of the varieties are rare and quite expensive to obtain.

Figure 6, Australian Kangaroo and Map die type varieties:

Die I – Break in frame line opposite top letters of denomination.

Found on the ½d, 1d, 2d and 3d values.

Die II – No break.

Found on the 1d, 2½d, 3d, 4d, 5d, 6d, 9d, 1/-, 2/-, 5/-, 10/-, £1 and £2 values.

Die III – Break in frame line opposite kangaroo's eyebrow.

Found on the 1d, 2d and 6d values.

Die IV – Break in frame line opposite kangaroo's eyebrow and above ST in AUSTRALIA, the top right corner is incomplete.

Found on the 3d, 6d, 9d, 1/- and £1 values.

(continued on Page 7)

(continued from Page 6)

Images of the various die types and where they are located on the stamp are provided in Figures 7 through 10.

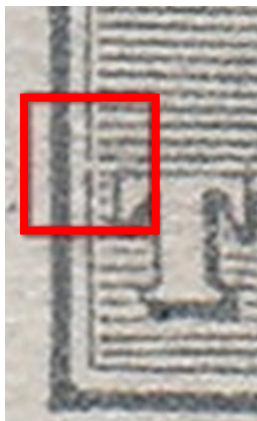


Figure 7, die type I, Scott #45, 2d
There is a break in the thin inner frame line to the left of the top letters of the denomination.



Figure 8, die type II, Scott #9, 9d
There is no break in the thin inner frame line to the left of the top letters of the denomination.



Figure 9, die type III, Scott #48, 6d ultra
There is a break in the thin inner frame opposite the kangaroo's eyebrow.



Figure 10, die type IV, Scott #49, 6d yellow-brown

There are breaks in the thin inner frame line opposite the kangaroo's eyebrow and above the "ST" in "Australia." The top right corner is incomplete.



With the multiple printings of the "Roos" opportunities arise to collect a wide range of color varieties. From the subtle shade differences between rose-red and red, olive and yellow-olive, there are plenty of opportunities to spend a few hours searching for one of the rarer varieties (Figure 11).



Figure 11, color varieties of the 1d - 3d values
Left to Right: Scott #2, 1d red and rose-red
Scott #3, 2d grey and slate grey
Scott #5, 3d olive, yellow-olive

(continued on Page 8)

(continued from Page 6)

The Kangaroo and Map stamps were in use for nearly forty years. The variety of town cancellations from the six different Australian states is another challenge to collect. From the common Melbourne, Brisbane, Sydney and Hobarth cancellations to the most obscure settlement in the outback, each has something to offer the collector. Believe it or not, some of the early "canceled-to-order" stamps carry significant premiums on value (Figure 12 and 13).



Figure 12, 3d stamp with Brisbane CTO cancel sold for \$1,864 AU (almost \$1,300 US) in 2013.



Figure 13, 5/- stamp with a Melbourne CTO cancel. Three examples of this cancellation are known with an estimated value of \$4,000 AU (almost \$3,000 US).

Collecting postal history with examples of the Kangaroo and Map stamps is not a difficult undertaking. There are plenty of representative items with lower value "Roo" stamps just waiting to be added to a collection. Finding interesting, multi-franked, covers is not an easy task but items are readily available (Figure 14). Postal history items featuring the higher value stamps are highly sought after. Competition is fierce, and they command significant prices.

Despite the harsh commentary and negative publicity, the Kangaroo and Map stamps survived and thrived. It has become one of the most recognizable worldwide stamp issues. The "Roo" stamps remained in circulation for more than thirty-five years, outlasting their critics, becoming a national icon.

Sources:

<https://postalmuseum.si.edu/exhibition/the-sun-never-sets-on-the-stamps-of-the-british-empire/australia-the-kangaroo#>

<https://www.linns.com/news/world-stamps-postal-history/australia-kangaroo-map-stamp-history-world-philately.html>

<https://www.stanleygibbons.com/collecting-stamps/dispatches/kangaroo-and-map-stamps-australian-classic>

<https://blog.delcampe.net/en/how-were-the-first-australian-stamps-created/>

New Look Pictor-Marks Priced Handbook: Australian Pictorial and Commemorative Postmarks 1887-1987, compiled by C. Peck.

<https://www.stampworld.com/en/stamps/Australia>

<https://worldstampsproject.org/philately-of-australia-varieties-of-postage-stamps-george-v/>

<https://www.glenstephens.com>

<https://www.stampboards.com/viewtopic.php?f=17&t=3450&start=1350>

Australian Commonwealth Specialists' Catalogue - Kangaroos (ACSC), edited by Dr. Geoffrey Kellow and published by Brusden and White, New South Wales, Australia.



Figure 14, three color franking cover from Pialba, Queensland, Australia, to Chicago.

The cover is franked with a pair of the 1d-red, a 1/2d green and a 3d (die 1) olive Kangaroo and Map stamps.



Covering the World



Interesting covers from around the world.

A National Park Crash Cover

by John Bloor

This cover was mailed from San Francisco on March 1, 1938, addressed to The Franklin Life Insurance Co. in Springfield, Illinois. It has a transit mark on the front from Yosemite National Park dated June 15, 1938. It was received by the insurance company on June 20, 1938. It looks rather ordinary so far although it took a long time to travel from San Francisco to Springfield and it is odd that it received a Yosemite National Park cancellation.

In the American Airmail Catalog (AAMC), 6th edition, volume 1 on page 193 (Interrupted Flight Cover), it is listed as number 380301. The cover was carried on CAM 37 by Transcontinental & Western Air (T&WA). In 1950 T&WA changed its name to Trans World Airlines or TWA.

The aircraft was piloted by John D. Graves; the First Officer was Clyde W. Wallace. As it flew east over California it was blown off course. It crashed into the side of Buena Vista Crest in Yosemite National Park at an altitude of 9,500 ft. Both the pilot and first officer were killed.

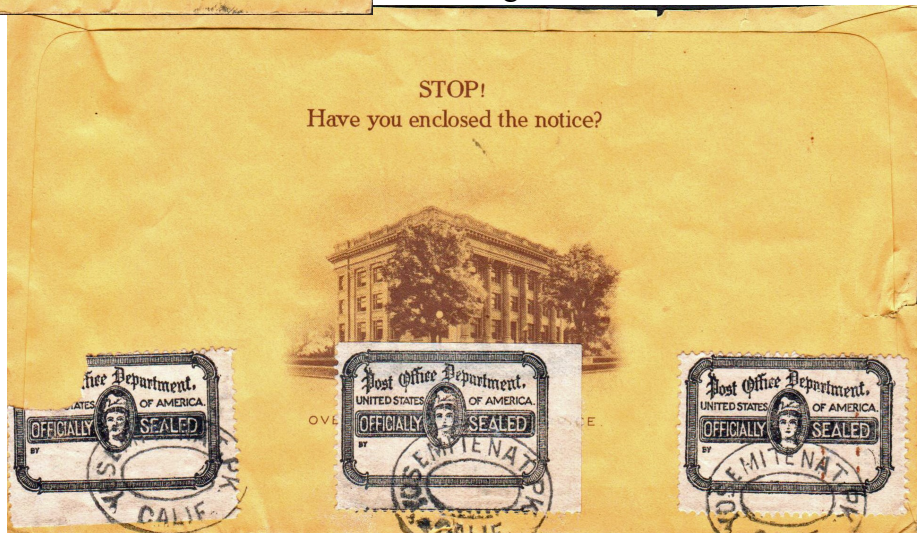
The wreckage was not found until June 12th. All 14 pounds of mail (about 300 letters) were salvaged and forwarded on June 14th and 15th from the Yosemite post office. All were inscribed by hand on the front, as was this cover, partially (and euphemistically) explaining the reason for the delay.



The AAMC lists it as a Wawona, California cover although Wawona is not mentioned on the envelope. The town of Wawona was established in 1883, about seven years before the creation of Yosemite National Park, and is entirely within the park. The Wawona post office may have been the only post office, or the largest one, in the park at the time of the crash.

There are three official seals on the reverse of the envelope although it doesn't appear to be damaged. They are tied by Yosemite double ring ovals and were probably used to indicate that this was salvaged mail.

According to the American Airmail Society (AAMS) website, this cover could be classified as recovered or salvaged mail. It also an example of interrupted mail. It is collectible because it can be identified by a special cachet, in this case the inscription on the front. There is more information about airmail crash covers on the AAMS website. There are also crash covers from railroads, buses, and ships. Mail damaged by natural disasters (tidal waves, earthquakes, and others) and war, terrorism, and other events can also be considered as salvaged or interrupted mail.



Second Saturday Programs at the Library

Second Saturday programs are sponsored by the RMPL and attract a friendly group of folks who are interested in a specific subject, or who are interested in learning more about an area of philately that may be new to them. *Contact Jim Kilbane, aurora_80017@yahoo.com, if you are interested in presenting a program.*

September 10, 2022 - 9:00 AM

Presenter: Steve Nadler

"Maps on Stamps and Related Topics"

Stamps and maps have a symbiotic relationship. We use maps to help identify routes used, or taken, for postal history research. Maps on stamps are used for history, propaganda, tourist promotion, artistry, etc. This program will review some of the maps on stamps, maps on postcards, maps on trade cards and maps used on commercial mail to promote business.



October 8, 2022 - 9:00 AM

Presenter: Jerry Hager

"La Semeuse - the Story of a Common Series of old French Stamps"

The French "La Semeuse" stamps are perhaps the most recognizable of the country. They are found in most beginner collections and accumulations. This program provides the background history of the "La Semeuse" stamp along with a few pages from an exhibit and some of the stamp forgeries.



CHERPEx 2022

Presented by the Cherrelyn Stamp Club

Friday and Saturday, September 23 - 24, 2022

Time: 10:00 AM - 5:00 PM

Come join us at our new location:

Malley Senior Center

3380 S. Lincoln St.

Englewood, CO 80113

Each day of the show the first 20 visitors, and all children, will receive a CherPex Dollar to spend with dealers.

New Publications for our Members

UNITED STATES

Arizona Territorials

Encyclopedia of the Colors of United States Postage Stamps: Volume 5: The Postage Due Issues, 1879-1916, by R.H. White and W.R. Bower

The General Issues of United States Stamps: Their Shades and Varieties, a History of the Private Perforating Machines and Their Products, 1879-1916, by Eustace B. Power

History of the United States Postal Service, 1775-1984

State Revenue Stamps, by Martin P Nicholson

A Synoptic Key to the Catalogued Envelope Stamps of the United States, by A.N. Caudell

COLORADO

A Quick History of Leadville, by Christian J. Buys

A Synoptic Key to the Catalogued Envelope Stamps of the United States

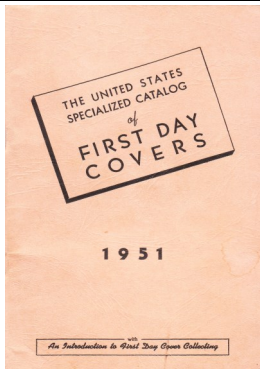
ORIGINALLY PUBLISHED IN 1914, REPRINTED WITH CURRENT SCOTT CATALOG NUMBERS CROSSINDEXED WITH THE 2014 CATALOG NUMBERS.

Being a system of alternates such as is used in Botany and Zoology in the determination of plants and animals, a system unique in Philately and so simple that a child can with accuracy determine the most difficult title of the United States envelopes.

Illustrated by a plate of 26 figures and a color strip of real envelope paper representing all colors used in their manufacture

Color strips are missing.

By A. N. CAUDELL,
605 Keefer Place Northwest,
Washington, D. C.



AFRICA (continued)

Les Timbres du Congo Surcharges à Boma en 1922-1923, by M. l'Abbé and G. Gudenkauf

ASIA

British Society of Russian Philately Library List: 30th Anniversary Issue, 1952-1982

Catalogue of the Philatelic Items Issued by China National Philatelic Corporation: 1955-1978; 1979-1991; 1992-1997 [three volumes]

Imperial Russian Stamps Used in Transcaucasia Part Seven: Elisavetpol, Guberniya, Zakataly, Okrug, by P.T. Ashford

Library of the British Society of Russian Philately: Catalogue 1991: Part 1 -- Alphabetical Listing, by George Poland Henderson

Notes on the Russian Revolutionary Stamps 1920-22 [and] Mongolia -- Its stamps 1924-1927, by K. Lissick (Two books bound together)

Железные дороги России (Railways of Russia), by Ильина, б. А. [Illia, B.A.]

Thai Stamps 2000: Standard Catalogue of Thai Postage Stamps, by Sakserm Siriwong

World Symposium for Collectors of Russian Philately: May 12, 1995, Helsinki, Finland

AFRICA

Cameroun Postal Tariffs: 1929-1946, by Marty Bratzel, Jr.

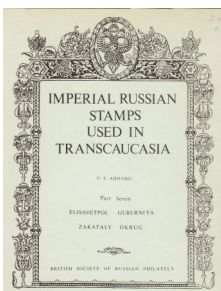
Les Entiers Postaux de Belgique, Congo Belge et Luxembourg (The Postal Stationery of Belgium, Belgian Congo and Luxembourg).

Etat Indépendant du Congo: Etude du 3,50 Francs mols, by J. M. Frenay

Etat Indépendant du Congo: Etude du 10 Francs mols, by J. M. Frenay

Etat Indépendant du Congo: Etude du 1 Franc mols, by J. M. Frenay

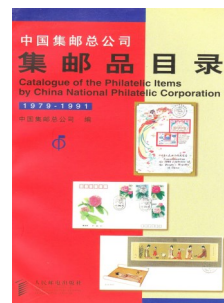
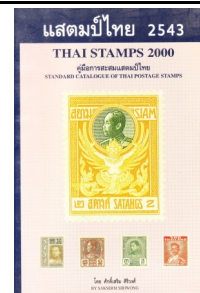
Etat Indépendant du Congo: Etude du 5 Francs mols, by J. M. Frenay



Library of
The British Society
of Russian Philately



CATALOGUE
1991
Part 1 -- Alphabetical Listing



New Publications for our Members

AUSTRALIA and OCEANIA

Catalogue of New Zealand Stamps: Every Design Illustrated in Full Colour, by Len Jury

Compact Australian Stamp Catalogue with Thematic Index Australian Antarctic Territory Australian Decimal First-Day Covers, published by Seven Seas Stamps

Postage stamps of the Seychelles, by Bertram W.H. Poole



EUROPE (continued)

French Army of the Orient (1915-1923) by Stanley J. Luft

Les Entiers Postaux sous le Regne de Leopold II. Tome 2 (1893-1910), by E. et M. Deneumostier

Die erste Ausgabe von Oesterreich und Lombardei-Venetien 1850 bis 1858, by P.F. de Frank

Haimov Specijalan Katalog Post Maraka Kraljevine S.H.S. Srbije, Crne Gore, Bosnie i Hercegovina (Haimov Specialized Catalog of the Postage Stamps of S.H.S. Kingdom Serbia, Croatia and Bosnia and Herzegovina)

Katalog over Norges Helpost 1872-1972, by T. Soot-Ryen

L'Impression des Timbres Français par les Rotatives: La Sabine: Coins Datés, Tirages Marques Distinctives des Cylindres d'Impression

L'Impression des Timbres Français par les Rotatives: Le Saint-Lo: Coins Datés, Tirages Marques Distinctives des Cylindres d'Impression

L'impression des Timbres [-poste] Français par les Rotatives: Taille-Douce (1954-1959)

EUROPE

Alt-Deutschland unter der Lupe, by Ewald Müller-Mark

Annotated Checklist of the General Government, by Ron Kwiatkowski

Austria Netto-Katalog Briefmarken 2006-2007 (Österreich Spezialkatalog)

Austrian Post Offices Abroad: Part Six; Bosnia, Serbia Danubian Principalities, by S. D. Tchilingirian and W. S. E. Stephen

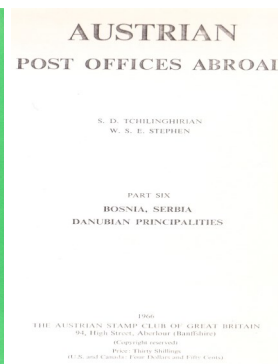
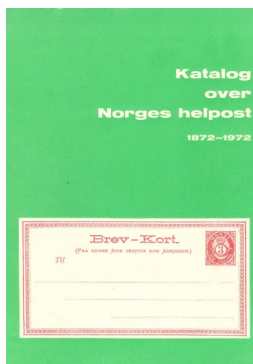
Beiträge zur Geschichte der Kgl. Hannoverschen Post (Contributions to the History of the Royal Hanoverian Post), von W.H. Schnoor

Calostki: Generalnego Gubernatorstwa 1939-1945 (General Government 1939-1945), by Piotr Pelczar

The Cancellations of Hungarian Post Offices on the First Five Issues of Austrian stamps 1850-67 During the Austrian Administration, by G.S. Ryan

Catalogue d'Alsace-Lorraine: des Cachets et Marques Postales Allemands (1872-1918) Français (1918-1924)

The Complete Deegam Machin Handbook, by D. A. Myall



New Publications for our Members

EUROPE (continued)

Lituania, mia "cara" Lituania (Lithuania, my "dear" Lithuania), by Luciano Calenda

Luftpostens Historia i Norden (The History of Air-mail in Scandinavia), by Örjan Luning

Monografie Ceskoslovenskych Znamek Celiny 1923-1938 (Monograph of Czechoslovakia Stamps and Stationery 1923-1938)

Monografie Ceskoslovenskych Znamek (Monograph of Czechoslovakia stamps : Niederlandisch-Neuguinea)

Nederlands Engels

Pohjois-Inkeri Filateelinen Tutkielma (North Ingrian Philatelic Thesis), by Harry W. Walli

Poland Revenue Stamp Catalog, by John A. Norton

Die Postzensur in Finnland (The Postal Censorship in Finland), by Hans G. Moxter

Sveriges Fasta Postanstalter Genom Tiderna, by Yngve Nylander

Výplatní známky 1923-1939 (Postage Stamps 1923-1939)

TOPICAL

Watercraft on Stamps: Supplement 1

Publication Guide: ATA Checklists & Handbooks

MISCELLANEOUS

Böhmen und Mähren Spezialkatalog Čalostki Nadruki (Postal Entires), by Józef Kossowski

A Creation Saga: How stamps are created, loved and collected, published by Sweden Post

Mellone's Discovering the fun in First-Day Covers: Complete up-to-date Catalog

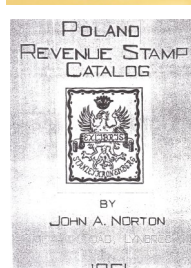
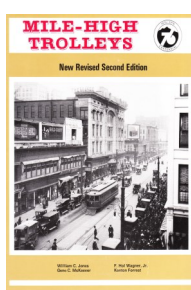
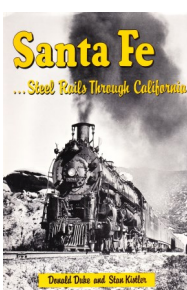
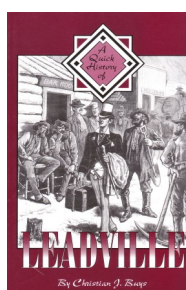
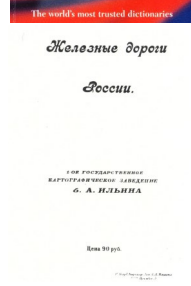
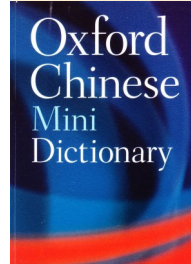
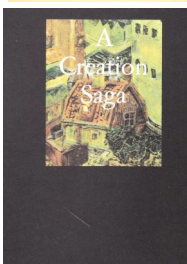
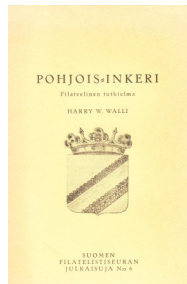
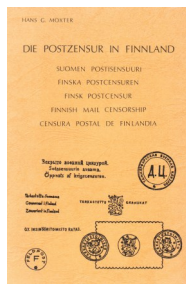
Oxford Chinese Mini Dictionary

Dutch-English / English-Dutch dictionary: With a Brief Introduction to Dutch Grammar

Poradnik Młodego Filatelisty (Young Philatelist's Guide), by Tadeusz Nowy

NON-PHILATELIC (RAILROADS)

Santa Fe - Steel Rails Through California, by Donald Duke and Stan Kistler



RMPL Board of Directors Meeting

RMPL Board of Directors Meeting

July 28, 2022

The meeting was called to order at 3:55 p.m. Board members present: Jim Kilbane, Bill Douglass, Steve Schweighofer, Rod Haenni, Eric Carlson, Gary Withrow, Rich Palestro, Paul Domenici and Regina Domenici. Absent: Tonny Van Loji. Visitor: Charlie Freise.

BILL DOUGLASS: FINANCIAL REPORT:

End of June:

Checking: \$113,352
First bank savings: \$34,309
Vanguard: \$200,954
Fidelity (Calvin Timpe's bequest) \$72,939.59
Total cash holdings: \$421,554

Fixed assets: \$624,383
Second quarter total income: \$78,293
Second quarter total expenses: \$31,002
Net ordinary income: \$47,291

Bill intends to keep \$20,000-\$25,000 in the checking account (rather than \$110,000) and move excess funds to the Vanguard account. If a major project is on the horizon, money can be obtained from Vanguard as needed. Bill also will explore investing \$25,000 in the best interest rate Money Market account at a local banking facility, allowing access for immediate use if necessary. Upon completion, he will close out the First Bank savings account.

OLD BUSINESS

RMPL silent auction held at Rocky Mountain Stamp Show (RMSS)

Paul Domenici reported auction results:

Gross \$22,435
Expenses \$3680
Net auction income: \$18,755.

Special thanks to Charlie Freise for donating all of the paper for the catalogs, decreasing expenses by \$1400. The RMPL auction team thanks everyone who participated in the auction.

Insurance:

Eric Carlson contacted the insurance company regarding dealers and non-members conducting business at bourses held in our meeting room. He reported there is no requirement that dealers/non-members need their own insurance coverage to be on the premises. Eric will draft a non-liability waiver and present it at the next meeting.

Grant for 501(c)(3):

State grant funds may be available for small non-profit organizations. Charlie Freise's research revealed that writing a grant proposal is complex and time-consuming. The project was put on hold for now.

Storage space solution:

Many ideas were discussed to address the shortage of space. These include, but are not limited to: eliminating redundancy by utilizing internet resources for copies of journals/auction catalogs and keeping only the latest edition of books. A motion was approved to form a space utilization committee to create a short and long-term structured plan to solve storage issues. Members of the committee (Steve Schweighofer, Rod Haenni, and Gary Withrow) to report progress at each board meeting,

Trash service:

A motion was approved to obtain a trash service which may include recycling.

ZOOM meetings:

A motion was approved to obtain a Zoom business license. Our current bandwidth is inadequate to use the Zoom platform if videos are shown. Steve will work with Xfinity to determine the actual cost of improving our internet speed and capacity.

Security cameras:

A motion was passed for Steve and Rich to investigate choices and cost for different types of interior/exterior security cameras.

NEW BUSINESS:

RMPL outreach:

Eddie Hackstaff designed a new APS classified ad that summarizes the benefits of membership in RMPL.

As part of our service to the community, Gary Withrow proposed the idea of sending postcards to English teachers as a basis for student essays. Members of the committee will read the essays and publish the best 2 in Scribblings.

A motion was approved to form a committee (Gary Withrow, Rich Palestro, and Regina Domenici) that would determine how to create a scholarship program.

Copier contract expired:

Charlie presented several options regarding the copier we use for journal and in-house publications. These include: continuing to pay the current lease on a month-to-month basis, buying out the current lease for \$3700, or purchasing/leasing a new machine. A motion was approved to purchase the existing copier with only a \$45 monthly maintenance fee.

The Meeting was adjourned at 5:55 pm

The next Board meeting will be Thursday, Sept 15, 2022.

Respectfully submitted,

Regina Domenici, Recording Secretary

DONATIONS

The library thrives on the enthusiasm and generosity of its members. The following societies, clubs, and individuals made donations to the Library since the last donation listing. These donations were made from May 20, 2022 through July 19, 2022. Thank you!

INDIVIDUAL DONATIONS

Jonathan Bennett	Richard Moore
John Bloor	Joe Neri
Thomas Cantrall	Alexander Papp
William Douglass	Richard Porto
Roe Emery	Brian Pugh
Nolan Flowers	David Reitsema
Cheryl Ganz	Melvin Roghair
Robert Gibson	Dick Seeley
David Goss	Gary Shaver
Don Hillger	Webster Stickney
Charlie Johns	Jack Van Ens
Gary McIntyre	Cassandra Zawojek
Dasa Metzler	
Helen Milam	

NOTES FROM THE LIBRARIAN

We've received a generous donation of post card magazines. We now own titles such as: American Post Card Collector, Post Card Dealer, Post Card World and many, many others. They will soon be on the shelves in the periodicals room. Thank you to Sergio for facilitating this donation. If you are a deltiologist, or even if you know one, come by the library and check these out!

The periodicals room is coming together. Almost all the files are now labelled, so it's much easier to find that magazine you're looking for. Also, the vertical files have finally received their new labelling, thanks to our wonderful volunteer, Daryl. She has worked tirelessly to organize the periodicals room and the vertical files, making them much more accessible to our patrons.

Come by the library and look at all of our new and improved areas. Research is now easier than ever. Take something home with you!

Sherri Soraci-Jennings

NEW MEMBERS

We extend a warm welcome to new members who have joined the library from June 9, 2022 through July 29, 2022.

Greg Merrill, Lakewood, CO - Collects Thailand

Richard Muir, Lakewood, CO - Collects UN Stamps

Please Note: New members and membership renewals received after July 29, 2022 will be acknowledged in the next issue of *Scribblings*.

NOTES FROM THE EDITOR

There are many ways to collect stamps. As collectors we all have a bit of "OCD" in our blood. Our methods of arranging, storing, organizing and presenting our material are unique to each of us.

Be honest with yourself. When you come across something that seems a "bit off" don't you experience a momentary compulsion to make it right? Have you ever gazed upon a collection and wanted to reach out and straighten a crooked stamp or cover? Take for example this nicely cancelled 3d Kangaroo and Map. Does it bother you that the stamp is mounted horizontally in order to better display the unique "collector" cancel?



It is never too late to introduce a child to the world of stamp collecting. It is important to curb your OCD while doing so. This may grate on your nerves but you must let the child explore and discover their own interests. What may be best for you may not feel right to a child. You must provide a positive and varied experience. Initially, too much pressure, too many rules, boundaries, directions and restrictions will turn the stamp collecting introduction into a bad experience that may be impossible to overcome.



The point I am trying to make is that each of us is unique in our collecting interests. We developed our collecting methods over time; they were not instantaneous. We may share general geographic, topical or historical interests but the way we go about collecting and displaying our material is as unique as the "collector" and "too-late" cancels above.

Charlie Freise

Library Calendar of Events



The RMPL Operations Manager, Steve Schweighofer, maintains a calendar of reserved club times. Clubs should check the calendar regularly and notify Steve (steve.schweighofer@comcast.net) of any updates or changes. Requests to reserve meeting space and time for philatelically related meetings other than those listed here must be approved and scheduled with Steve well in advance. Call the Library or the appropriate club to confirm the place and time.

Hours of Operation:
 Mon - Sat: 10:00 AM - 2:00 PM
 Closed Sundays and Holidays
 Phone: (303) 759-9921
 Email: rmpl@qwestoffice.net

SEPTEMBER 2022

- Sep 3 Sat** - meeting 10 AM
Mexico/Latin America Club
- Sep 3 Sat** - meeting 1 PM
Topical Philatelists in Colorado (TOPIC)
- Sep 5 Mon** - closed for Labor Day
- Sep 8 Thu** - meeting 2 PM
Cherrellyn Stamp Club
- Sep 10 Sat - 9 AM**
Second Saturday at the RMPL
 Presenter: Steve Nadler
 Title: "Maps on Stamps and Related Topics"
- Sep 10 Sat** - meeting 10:30 AM
Mexico/Latin America Club
- Sep 10 Sat** - meeting 1 PM
Colorado Postal History Society
- Sep 11 Sun** - meeting 1 PM
Denver Postcard Club
- Sep 14 Wed** - meeting 7 PM
Denver Germany Stamp Club
- Sep 15 Thu** - meeting 4 PM
RMPL Board meeting - visitors are welcome
- Sep 17 Sat** - meeting 9:30 AM
Metro Denver Young Collectors
- Sep 18 Sun** - meeting 1 PM
Great Britain and Commonwealth Collectors Club
- Sep 23 - 24 Fri-Sat** - 10 AM - 5 PM
CHERPEX Stamp Show
- Sep 28 Wed** - meeting 11 AM
Denver Stamp Club

MARK YOUR CALENDAR

Saturday, October 22, 2022
Beginning 11:00 AM
RMPL Annual Large Lots Auction
275 Lots - No Buyers Premium!

OCTOBER 2022

- Oct 1 Sat** - meeting 10 AM
Scandinavian Collectors Club
- Oct 1 Sat** - meeting 1 PM
Topical Philatelists in Colorado (TOPIC)
- Oct 8 - 9 AM**
Second Saturday at the RMPL
 Presenter: Jerry Hager
 Title: "La Semeuse - the Story of a Common Series of old French Stamps"
- Oct 8 - Sat** - meeting 10:30 AM
Mexico/Latin America Club
- Oct 8 - Sat** - meeting 12:30 AM
Rocky Mountain Aero and Astrophilately Club
- Oct 9 - Sun** - meeting 1 PM
Denver Postcard Club
- Oct 12 Wed** - meeting 7 PM
Denver Germany Stamp Club
- Oct 13 Thu** - meeting 2 PM
Cherrellyn Stamp Club
- Oct 15 Sat** - meeting 9:30 AM
Metro Denver Young Collectors
- Oct 16 Sun** - meeting 1 PM
Great Britain and Commonwealth Collectors Club
- Oct 17 - 21 Mon - Fri** - 10 AM - 2 PM
RMPL Large Lots Auction Viewing
- Oct 22 Sat** - 11 AM
Live Auction - 17th Annual RMPL Large Lots Auction
- Oct 26 Wed** - meeting 11 AM
Denver Stamp Club

**MARK YOUR
CALENDAR**
CHERPEX STAMP SHOW
September 23-24, 2002