



# S c r i b b l i n g s

...from the Rocky Mountain Philatelic Library

Sherrí Soraci-Jennings, Librarian

Vol. 30 - No. 2  
www.rmpldenver.org

2038 South Pontiac Way, Denver, CO 80224-2412  
(303) 759-9921

March / April 2022  
Email: [rmpl@qwestoffice.net](mailto:rmpl@qwestoffice.net)

## IN THIS ISSUE

**Memoriam to Don Beuthel**  
by Roger Rydberg ..... 1

**President's Message**  
by Tonny Van Loij ..... 2

**Announcements** ..... 3

**Collecting Early Portuguese Colonies (Part 2)**  
by Steve Bonowski ..... 4

**Covering the World**  
by John Bloor ..... 6

**Rocky Mountain Stamp Show Announcement**  
by Steve Schweighofer . 7

**Donations to the RMPL**  
by Tim Heins ..... 7

**Second Saturday Programs**

**The Milky Way Galaxy**  
by John Blanyer ..... 8

**To be Determined**  
by Steve Nadler ..... 8

**Japanese Philatelic Week**  
by Charlie Freise ..... 9

**New Publications for our Members**..... 11

**Notes from the Editor** . 15

**Notes from the Librarian**  
..... 15

**New Members** ..... 15

**Donations**..... 15

**Calendar of Events** ..... 16

## In memoriam - Donald G. Beuthel July 25, 1929 - October 11, 2021

by Roger Rydberg

### FOUNDER, VOLUNTEER, PHILATELIST...

Don was born in Boise, Idaho, on July 25, 1929. His family moved to Kansas City, Missouri, for a short period of time, then settled in Las Animas, Colorado. Don moved to Denver in 1945 and attended South High School where he met the love of his life, Ellengail Mapes (RMPL Librarian for many years) whom he married in 1951. He graduated from South High School in 1947 and the University of Denver in 1951.



In 1955, Don began his career as a teacher in the Denver Public School System. He taught elementary education at the Carson, Ashley, Slavens, Wyatt and Holm Elementary Schools. He retired from the Denver Public School System in 1984.

**FOUNDER:** Don was one of the founders of the Rocky Mountain Philatelic Library and served as the first President for ten years and Operations Manager for an additional eight years. He served on the search committee for the library's current buildings and was instrumental in securing initial financing to purchase the building.

**VOLUNTEER:** After serving as President, Don continued to serve on the Board of Directors for many years. He worked as a weekly volunteer helping with everything from manning the front desk, applying catalog labels on books and helping with the daily cleaning and maintenance of the buildings.

### PHILATELIST:

Nationally - Don was a retired APS-Accredited Judge and ATA-Accredited Judge, past president of the American Topical Association, a member of the American Philatelic Society, American Topical Association, Sports Philatelists, and the Machine Cancel Society.

Locally - Don was a member of the Aurora Stamp Club, TOPIC, Colorado Postal History Society and he held offices in each of these organizations. Don was a Rocky Mountain Stamp Show (ROMPEX) committee member for twenty years and served as president for two years.

# Scribblings

## Newsletter of the Rocky Mountain Philatelic Library

2038 South Pontiac Way  
Denver, CO 80224

**Phone:** (303) 759-9921

**Email:** rmpl@qwestoffice.net

**Web Page:** www.rmpldenver.org

**Instagram:** The RMPL

**Hours:** Monday - Saturday 10:00 AM - 2:00 PM  
Closed Sundays and Holidays

### Librarian

Sherri Soraci-Jennings

### Library Officers

President:	Tonny Van Loij
Vice President:	Jim Kilbane
Operations Manager:	Steve Schweighofer
Stamp Manager:	Dasa Metzler
Corresponding Secretary:	Paul Domenici
Recording Secretary:	Regina Domenici
Treasurer:	William Douglass
Bookkeeper:	Eddie Hackstaff

### Directors:

Eric Carlson	Rod Haenni
Rich Palestro	Gary Withrow
Ex-officio member:	Don Dhonau

### Editor

Charlie Freise

### Copy Editors / Proofreaders

John Bloor	Paul Domenici
Roger Rydberg	Steve Schweighofer
Sherri Soraci-Jennings	

*Scribblings* is published bimonthly by the Rocky Mountain Philatelic Library. The RMPL is a chartered Colorado nonprofit corporation and is an IRS-designated 501(c)(3) charitable organization. Membership subscriptions over that for the contributing membership, and donations of appropriate philatelic materials, may be deductible for US income tax purposes. The Library is a volunteer organization. Financial donations, philatelic books, stamps, supplies and donations of your time are welcome. The Library Bylaws are available for review at the Library or you may obtain a copy upon request.

A basic membership with the RMPL is \$25 per year and includes book checkout privileges and six issues of *Scribblings*. Call for more information.

Officers and Directors may be contacted through the RMPL.

## From the Desk of the President -

by Tonny Van Loij



As I write this column I find myself entering the third week of quarantine and still not feeling as well as I would like. Hopefully there are no other Library members going through the same situation.

On the front page readers will find a memoriam article in honor of Don Beuthel. He was one of the five original signatories of the Articles of

Incorporation for the Rocky Mountain Philatelic Library. There are two surviving signatories: Jim Kilbane and Roger Rydberg. With Don's passing his responsibilities have fallen on the shoulders of the same core group of volunteers.

This group is growing smaller due to health and age. Every volunteer who passes has had a significant impact on the Library. Not only do we lose a life-long friend but we lose the institutional knowledge and history of the individual. Without a new generation of volunteers to step forward the lifespan of the Library is shortened. If you have a few spare hours during the week, why not volunteer and help out at the Library? I worry that our core group of volunteers will burn out as they continue to assume more and more responsibilities.

We had an inquiry from a collecting club concerning the use of our meeting room, its availability and if they would qualify for use of the room. Operations Manager, Steve Schweighofer, is looking into this and will address his findings at the next Board meeting. There are a number of responsibilities and liability concerns that need to be addressed.

Following up on the use of the meeting room and collecting clubs, the Aurora Stamp Club disbanded after almost 50 years. Due to declining membership, age, health and the impact of the COVID-19 the remaining members voted to disband the club. Upon finalizing the closure, the Aurora Stamp Club made a significant donation to the Library and we thank the remaining members for their generosity.

I hope my health situation will improve as I am scheduled to travel to ARIPEX to exhibit. I hope to get a chance to talk to other clubs and members to see what they do, or if they have some ideas on how we can recruit new members and volunteers.

Again, my thanks to all volunteers and members who step in sometimes. The board will continue to work on recruiting new blood where needed.

## GENERAL ANNOUNCEMENTS

### CHANGE TO HOURS OF OPERATION

On February 10<sup>th</sup>, 2022, the Library Board voted to change the hours of operation. This is a result of the resent loss of members from our core group of volunteers. Due to the shortage of volunteer staff the Library is no longer able to sustain current levels of operation.

**EFFECTIVE MARCH 1<sup>st</sup>, 2022**  
**THE NEW HOURS OF OPERATION ARE:**  
**Monday - Saturday: 10:00 AM - 2:00 PM**  
**Closed: Sundays and Holidays**

### LIBRARY VOLUNTEERS WANTED

We need additional help in almost every area of RMPL operations, especially back-ups for publishing and stamp mart operations. If you are interested in becoming more active with the RMPL, whether it is helping publish *Scribblings*, sorting donations for our stamp mart, or helping with library maintenance please contact the Library at 303-759-9921.

### BOOKKEEPER WANTED

The Library is searching for a new bookkeeper. The position requires an individual with good computer skills and familiarity with QuickBooks for non-profits. If you are interested, or know of someone, interested in the position please call 303-759-9921.

### 2022 ROCKY MOUNTAIN STAMP SHOW

The 2022 Rocky Mountain Stamp Show committee is planning for this year's show. With some of our members retiring, our workforce is greatly depleted. We are looking for an infusion of new blood in many roles to help ensure a successful stamp show, both from a planning standpoint and 'on the ground' at the show. We need volunteers to manage the registration desk, assist with floor management, help with cachet sales and we need a hearty team to set up and take down the exhibit display frames. Please contact Ron Lampo at [chairman@rockymountainstampshow.com](mailto:chairman@rockymountainstampshow.com) for more information on volunteering.

### SECOND SATURDAY PROGRAMS

Sponsored by the RMPL, the Second Saturday programs are generally about an hour long and focus on a specific subject. The subject matter is not limited to philately. Attendance is open to anyone who has a desire to learn something new about a specific subject, or enjoys discovering something new about an area of philately unfamiliar to them. Please contact Jim Kilbane at: [aurora\\_80017@yahoo.com](mailto:aurora_80017@yahoo.com) for more information.



**MAY**  
**27-29**  
**2022**

IN THE SAME BUILDING



**ARAPAHOE COUNTY FAIRGROUNDS, 25690 EAST QUINCY AVE., AURORA, COLORADO**  
**Friday and Saturday, 10:00 AM - 6:00 PM; Sunday, 10:00 AM - 3:00 PM**

~ Guest Societies ~

**American Association of Philatelic Exhibitors**  
**Rossica Society of Russian Philately**  
**Polonus Polish Philatelic Society**  
**Armenian Philatelic Association**  
**Colorado Postal History Society**

**Attractions for all 3 days:**

**What's in Your Attic?, a free collection evaluation**  
**Denver Stamp Camp Activities for Youth & Young Adults**  
**Rocky Mountain Philatelic Library Silent Auction with 750+ lots**



# Collecting Early Portuguese Colonies (Part II)

by Steve Bonowski

The focus for Part II of the series on classic Portuguese colonial stamps covers the time period 1910-1940. This period saw the end of the centuries-old Portuguese monarchy, the establishment of the First Portuguese Republic in October 1910, the formation of a military dictatorship with the May 1926 coup d'état and the onset of World War II. This 30-year time span was every bit as philatelically active as was the prior 1870-1910 period.

The First Republic saw the final three districts of Mozambique (Kionga, Quelimane and Tete) issuing stamps. By the middle of the 1920s all the districts had ceased issuing stamps. Additionally, the first semi-postal, airmail and postal tax stamps were issued. During the 1930s, the eight colonies began to diverge somewhat in their issuances. However, three common types of definitive stamps can be identified: The First Republica overprints from 1911-1925, the first Ceres issues from 1913-1933, and the Imperio issue of 1938.

Organized mayhem is perhaps the best description for the First Republic period. The 1898 King Carlos stamps, unissued stamps from the short reign of King Manuel (1908-1910) and the Vasco da Gama issues of the former monarchy were readily available and pressed into service. The word "REPUBLICA" was overprinted on these stamps either horizontally or diagonally using red, black or green ink (See Figures 1, 2 and 3 - below).



Figure 1, top left, Mozambique, 1911, Scott Catalog #108.

Figure 2, top right, Quelimane, 1913, Scott Catalog #11.

Figure 3, bottom left, St. Thomas & Prince Islands, 1912, Scott Catalog #113.



Figure 4, Timor, 1913, Scott Catalog #J28, with double "REPUBLICA" overprint.

With so much happening, printing mistakes did happen such as inverted and double overprints (See Figure 4 - above). Clearly a different course of action was needed. This came about in 1913 with the new Ceres definitive stamps, although the Republica overprints continued to appear as late as 1925.

In 1913-14, a new definitive stamp depicting the image of Ceres, goddess of the harvest and agriculture, was released for the eight colonies as well as the five districts (See Figure 5 - below).



Figure 5, left to right

Mozambique, 1914, Scott Catalog #184.

Tête, 1914, Scott Catalog #30.

Lourenço Marques, 1914, Scott Catalog #116.

This was a long-running issue covering a period of twenty years (1913-1933). The Ceres issues are found in most worldwide collections and most are fairly inexpensive. There are multiple paper, color, perforation and design type varieties (See Figure 6 - left). More than three hundred printing errors and plate flaws have been identified for the Ceres stamp design.



Figure 6, Portuguese Congo, 1914, Scott Catalog #111-variety. Note the obvious break in the upper frame above the letter "E" in Portuguesa.

(continued on Page 5)

(continued from Page 4)

During the 1930s the colonies issued different sets of definitive stamps. Some colonies issued another set of Ceres stamps while others issued the Padroes set of stamps. Mozambique issued a set of stamps similar to Portugal's set honoring the Lusoids epic poem. (See Figures 7, 8 and 9 - below).



Figure 7, left, Angola, 1932, Scott Catalog #247.  
 Figure 8, center, Macau, 1934, Scott Catalog #270.  
 Figure 9, right, Mozambique, 1933, Scott Catalog #267.

As the 1930s came to a close, all eight colonies came together and released the Imperio issue in 1938 (See Figure 10 - top right)

Figure 10, Portuguese Guiné, 1938, Scott Catalog #236.

In 1936, Macau was the first colony to issue a set of airmail stamps on its own. All eight colonies included airmail stamps with the 1938 Imperio issue (See Figure 11 - bottom-right).

Figure 11, St. Thomas and Prince Islands, 1938, Scott Catalog #C11.



Mozambique issued the first semi-postal set in 1919 to benefit war veterans (See Figure 12 - below).



Figure 12, Mozambique, 1919, Scott Catalog #B14.

The eight colonies jointly issued their first postal tax stamps in 1925. The stamps were issued to raise money for a statue of the Marquis de Pombal. The Marquis led the effort to rebuild Lisbon following the great earthquake of 1755 that leveled most of the city (See Figure 13 - right).



For the third and final part of the series on Classic Portuguese Colonies some "Gems and Oddities" from my collections will be reviewed.

Figure 13, Mozambique, 1925, Scott Catalog #RA3.

**Author Steve Bonowski is a 48-year member of the American Philatelic Society, a 30-year member of the International Society for Portuguese Philately, and has been a member of the Rocky Mountain Philatelic Library for 11 years.**

### Early Portuguese Postal History

The first record of postal service in Portugal is from the 12<sup>th</sup> century. Students sent letters home requesting funds for their studies. Royals and nobles had their own couriers for their mail. In 1520, King Manuel I instituted the office of the King's Postmaster General.

The King nominated Luis Homem, a knight of the Royal Household, as the first Postmaster General. He had to reside in Lisbon and if not present he had to appoint a trustworthy substitute for whom he stood in surety. He had to have couriers at hand for any journey as required by the King or others. He regulated the prices, arranged transport, established post-houses and post-horses to support the service in convenient locations, and ensured there were rest stops for the couriers. Regular service was soon established to all the major cities and towns in the Kingdom. The Postmaster General took ten percent of the fees charged and the courier received the remainder. The position became hereditary and in 1606 it was sold to the family Gomes de Mata for the sum of 70,000 cruzados (approximately equivalent to 21,000,000 US dollars today).

Couriers had to provide rapid, discreet, confidential service and could not carry any post other than that ordered by the Postmaster General. They had special privileges and were clothed and armed from the Royal purse. They could carry both sword and dagger, were exempt from taxes and could not be stopped or imprisoned for any but the most serious of crimes. The first couriers journeyed to Africa and South America in 1657.



# Covering the World



Interesting covers from around the world.

by John Bloor

## A Cover from a Dead Country



profitable islands. In the late 1800s and early 1900s they offered them to both the United States and the German Empire without success.

In 1916 the United States was worried about attacks from German submarines and thought that the possibility of having them in the Caribbean put them too close for comfort. In late 1916 the U.S. agreed to buy the islands for 25 million dollars (\$390 million in today's dollars), renaming them the U.S. Virgin Islands. In contrast the purchase of Alaska (Seward's folly or Seward's icebox) 50 years earlier had cost only \$7 million (\$132 million dollars today).

The image shown was provided by Will Gum, a library member living in northern California. Much of the information about the cover was also provided by Will. He saw the cover on eBay and was attracted to it because of the involvement of the Danish West Indies (DWI) in American history. Wikipedia was also a source for background on the DWI.

Their modern history began in 1672 when the Danish West India Guinea company first claimed the island of St. Thomas; then in 1718 they also annexed the island of St. John. In 1733 they acquired St. Croix from the French West India Company. The goal of the Danish colonizers was to exploit the triangular trade. The three legs of this trade were the export of guns and other goods to Africa, the transport of slaves to the Caribbean to work the sugar plantations and the subsequent sale of sugar, rum and molasses to Denmark. Both the U.S. and British Virgin Islands (the latter often called just the Virgin Islands) are part of the Virgin Islands archipelago and are volcanic in origin.

In 1848 slavery was abolished, causing the near collapse of the DWI economy. Beginning in 1852 the Danish parliament began debating the sale of the un-

The papers were signed on January 17<sup>th</sup>, 1917 and the U.S. took possession on March 31<sup>st</sup>, 1917.

This letter is postmarked from Christiansted, St. Croix, the largest city on St. Croix Island, on January 25<sup>th</sup>, 1917, only eight days after the signing. This was during the short transition from Danish to U.S. ownership and is an early usage during U.S. ownership, before U.S. possession.

The stamps used are DWI Scott 51-58 issued in 1915. The use of a full set of these stamps, which overpays the rate, the neat arrangement of them on the cover, and its being sent from one St. Croix address to another in the same city, makes one wonder if it is a philatelic usage. Use of an apparent business cover ("St. Croix Ordinary Sugar Cookies") suggests a possible commercial usage. Regardless, used copies of these stamps are scarce and even more so on cover. That this is a transition period cover makes it even more uncommon.

That's it for this issue. Maybe your cover will appear here next month – if you send it to us with some background information. I am looking forward to hearing from you.

# GEORGE BRETT CUP Rocky Mountain Stamp Show May 27 - 29, 2022 *by Steve Schweighofer*

After being shut down for the last two years because of the COVID-19 pandemic, the Rocky Mountain Stamp Show (RMSS) will resume its annual Denver area show for 2022 on Memorial Day weekend, May 27-29. The show is organized and operated by Rocky Mountain Philatelic Exhibitions, Inc. (ROMPEX).



The World Series of Philately Champion of Champions competition show will be held in new spacious and well-lighted facilities of the Arapahoe County Fairgrounds at 25690 E. Quincy Avenue, Aurora, Colorado. The show hours are Friday & Saturday, 10 AM to 6 PM; Sunday, 10 AM to 3 PM. There will be 35 dealers from around the country and 375+ frames of exhibits for judging including the George Brett Cup competition. Show admission is free.

The official show hotel is the DoubleTree Hotel at 13696 E. Iliff Place, Aurora, Colorado. The guest room rate for show attendees is \$129 per night when booked before May 12, 2022.

Shuttle service is available to and from the fairgrounds for RMSS attendees staying at the DoubleTree.



The show will host Women Exhibitors (WE), the Rossica Society of Russian Philately, the Polonus Polish Philatelic Society, the Armenian Philatelic Association and the annual meeting of the Colorado Postal History Society. WE will hold their biannual WE Fest for the first time since 2018 with free seminars open to all on Thursday from 8 AM to 5 PM in the Amphitheater Room at the DoubleTree Hotel before the show opens on Friday.

The awards banquet will be at 7 PM on Saturday evening at the DoubleTree.

In a first for RMSS, this will be a joint event with the Denver Postcard & Paper Show, which will be held over two days, Friday & Saturday, May 27-28.

**American Association of Philatelic Exhibitors**

**The Rossica Society of Russian Philately**

**WOMEN EXHIBITORS**  
 HOSTING  
**WE FEST**

**POLONUS Polish Philatelic Society**

**Armenian Philatelic Association**

**Colorado Postal History Society**

## The Advantages of Making Donations to the RMPL

*by Tim Heins*

Many members of the Library have made donations. Federal tax laws for many years have provided a deduction for gifts to charities, such as the RMPL, on the Schedule A (Itemized Deductions). Due to the Federal tax law changes passed in 2017 many individuals chose to use the standard deduction instead of itemized deductions. Members living in Colorado who use the standard deduction can obtain a deduction on their state tax return for the amount of charitable donations above \$500.

In addition, the Federal CARES Act, passed on March 27, 2020, allows taxpayers filing their 2021 Federal return to deduct cash charitable contributions up to \$600, even if the taxpayer uses the standard deduction.

Persons donating philatelic material to the RMPL can deduct the 'fair market value' of this gift on the Federal Schedule A. The taxpayer must use reasonable efforts to determine the 'fair market value' of items donated. The volunteers at the RMPL are not allowed to determine the 'fair market value' of the donations



it receives; the RMPL provides a receipt to each donor.

Also, volunteers who work at the RMPL may deduct the cost of the trips to the RMPL to perform their duties. This charitable deduction is .14¢ per mile traveled for each round trip.

Members who renew their membership above the lowest membership level can claim the amount above \$25 as a charitable donation on their income tax returns. Also members may designate that their donation be used for a specific purpose such as Librarian Fund, Capital Improvement Fund or RMPL Youth Club.

Questions about this information should be directed to your tax return preparer.

# Second Saturday Programs at the Library

Second Saturday programs are sponsored by the RMPL and attract a friendly group of folks who are interested in a specific subject, or who are interested in learning more about an area of philately that may be new to them. *Contact Jim Kilbane, aurora\_80017@yahoo.com, if you are interested in presenting a program.*

**March 12, 2022 - 9:00 AM**

**Presenter: John Blanyer**  
**"The Milky Way Galaxy"**



Learn some fascinating facts and data about the galaxy we live and thrive in. How big is it? Where do we fit in? Who is our nearest neighbor? How many galaxies can there be in our universe? Is there more than one universe? Is it possible that we are really alone? Have we been communicated with? TRUTH, what is it? Why is it so? Who does know? So please attend, bring your scientific rocket scientist children and see just how full of bull I really am!

**April 9, 2022 - 9:00 AM**

**Presenter: Steve Nadler**  
**Subject: Scandinavian Postal History on Postcards**



The program is a short survey of various kinds of postal history found on postcards. Examples include Aland, Denmark, Faroes, Finland, Norway, Greenland, Iceland and Sweden. The program includes two special postal cards retrieved from the Denver Post Office Dead Letter Office by an unknown postal worker. One of the postal cards is from Denmark after occupation by Germany during WWII and the other is just after WWII.

## Denver Postcard & Paper Ephemera Show

**Arapahoe County Fairgrounds**  
**25690 E Quincy Ave, Aurora, CO 80016**  
**Friday-Saturday May 27-28, 2022**  
**Friday 11AM-6 PM, Saturday 9:30 AM-4 PM**  
**Admission \$5.00**

**(Discount available on the website:  
[www.denverpostcardshow.com](http://www.denverpostcardshow.com))**

**DENVER POSTCARD & PAPER EPHEMERA SHOW**  
 Friday-Saturday  
 May 27-28, 2022

**NEW MAY LOCATION**

**Arapahoe County Fairgrounds**  
 25690 E Quincy Ave  
 Aurora, CO 80016

## 28th Annual RMPL Silent Auction

**Rocky Mountain Stamp Show**  
**May 27<sup>th</sup> - 29<sup>th</sup>, 2022**  
**Arapahoe County Fairgrounds**

The auction consists of 761 lots featuring better United States and worldwide single stamps, sets and covers. Truly, there is something for every collector. Items of particular note found in this auction are:

- ◆ United States, Scott Catalog #C13-15.
- ◆ White Plains souvenir sheet, Scott Catalog #630.
- ◆ Two Washington-Franklin coil pairs with A.P.S. certificates.
- ◆ More than a dozen individual worldwide stamps with certificates.
- ◆ Many interesting covers.

**MARK YOUR CALENDARS !**



# Japanese Philatelic Week Commemorative Stamps

by Charlie Freise



Left, Japan, 1961, Scott Catalog #728 "Dancing Girl" based upon a 17<sup>th</sup> century screen.

Right, Japan, 1974, Scott Catalog #1163, "Fingers" by Shinsui Itō (1898-1972).



In 1945 Japan began the process of recovering from the devastating effects of World War II. Stamp production was limited to the most cost efficient printing methods in order to conserve paper and ink. The majority of postage stamps were printed using offset lithography with a few issued using recess (intaglio) printing. All of the stamps were issued imperforate.

In early 1947 perforate stamps became available and a variety of printing methods were used (lithography, typography, intaglio and photogravure). The Ministry of Communication organized the first Philately Week in 1947. The aim of the program was to demonstrate the beauty and artistry of postage stamps, to spread the cultural and public values of Japan and promote the hobby of stamp collecting. A special souvenir sheet of five stamps titled "Thunderstorm below Mountain" was issued on November 1, 1947 to commemorate the special week (See Figure 1 - below).



Figure 1, Japan, 1947, Scott Catalog #395, "Thunderstorm Below Mountain," based upon a woodblock print from the Edo period (1615-1868) by the artist Katsushika Hokusai (1760-1849).

On November 29, 1948, a single stamp and souvenir sheet were released to commemorate the Philatelic Week. The stamp, based upon a design by the artist Hishikawa Moronobu (1618-1694), is titled "Beauty Looking Back." The souvenir sheet consists of five horizontal stamps with 1.5 million copies printed using the photogravure process. A single stamp was issued in 1949, and a souvenir sheet again consisting

of five horizontal stamps with 2 million sheets printed using the photogravure process. The stamp is based upon a wood block print by Hiroshige (1797 - 1858) and is titled "Moon and Geese." (See Figure 2, below).

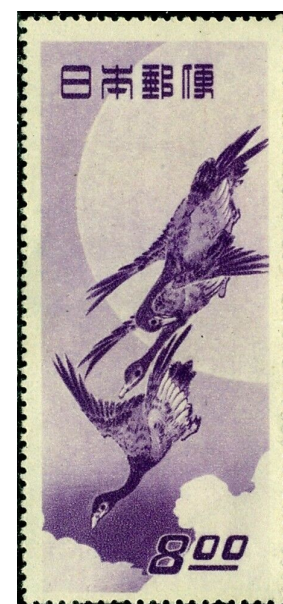


Figure 2

left, Japan, 1948, Scott Catalog #422 "Beauty Looking Back"

right, Japan, 1949, Scott Catalog #479 "Moon and Geese"

The two stamps from 1948 and 1949 are the most difficult to find in good condition and the souvenir sheets are quite expensive.

The Japanese Ministry of Communication has continued to issue at least one commemorative Philatelic Week stamp, or souvenir sheet, for more than 50 years. Stamps were not issued from 1950-1953; production resumed in 1954.

In 1954 a booklet stamp was released based upon a painting featuring a statue of Kannon Bosatsu, the bodhisattva of divine mercy and compassion. The painting is found in Kondo Hall in the city of Nara.

(continued on Page 10)

(continued from Page 9)

The individual stamp is fairly common and can be found in many beginner collections. There were two versions of the booklet issued, each has two labels found to the left and right of the bottom row of stamps. The left label is where the difference between the two booklet panes is found. On Scott #580a (See Figure 3, below) the label on the left has two columns of characters, on Scott #580b the label has the figures arranged in three columns. A collector needs to be careful when purchasing this booklet pane as there is a significant difference in the catalog value between the panes.



Figure 3, Japan, 1954, Scott Catalog #580a, Kannon Bosatsu.



Figure 4, left to right

Japan, 1955, Scott Catalog #616 "Girl Blowing Glass Toy."

Japan, 1956, Scott Catalog #630, "Kabuki Actor - Ebizo Ichikawa."

Japan, 1957, Scott Catalog #641, "Girl Bouncing Ball."

Japan, 1958, Scott Catalog #646, "Woman with Umbrella."

The stamps issued in the late 1950s feature works by artists of significance (See Figure 4, above). The stamp issued in 1955 is based upon a piece of work by the artist Utamaro (1792-1793) titled "Ten Physiognomies of Women." This stamp was not only issued to commemorate Philatelic Week but also the 150<sup>th</sup> anniversary of the death of Utamaro. The stamp issued in 1956 features the famous Kabuki actor, Ichikawa Ebizō (Ichikawa Danjūrō V), in his role as Takemura Sadanoshin in the play "The Colored Reins of a Loving Wife" by the artist Tōshūsai Sharaku (1794). The stamps from 1957 and 1958 represent works of art by Suzuki Harunobu (1770) and Torri Kiyonaga (1752-1815) respectively.

As popularity of the Philatelic Week grew, special programs and first day ceremonies were held. Most of the programs and covers are reasonably priced. Below is an example of the 1962 Philatelic Week issue on a first-day cover with cachet, special event cancellation in red as well as a Nagoya circular date stamp (See Figure 5 - below).



Figure 5, Japan, 1962, Scott Catalog #757 with #611, Dancer from "Flower Viewing Party," based upon a painting by Nagano Isen'in Kano (1775-1828).

The design and format of the commemorative Philatelic Week stamps has changed over the years; the main focus has remained the same. The stamps continue to promote the stamp collecting hobby, demonstrate beauty and artistry, and spread the cultural and public values of the Japanese (See Figure 6 - below).



Figure 6, Japan, 1982, Scott Catalog #1488-1489, "Views of the Snow on Mount Matsuchiyama" based upon a woodcut print by Kiyonaga Torii (1752-1815).

Sources:

<https://www.stampworld.com/en/stamps/Japan/Postage%20stamps/1960-1969> <https://istampgallery.com/1958-philately-week/> <https://colnect.com/en/stamps/list/country/108-Japan/year/1957>

<https://isjp.org/> - International Society of Japanese Philately

<https://www.philatelicpursuits.com/entities/japan/by>

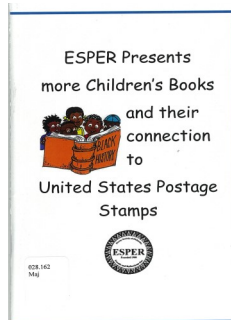
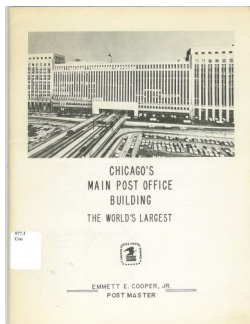
Mark Joseph Jochim  
[http://www.yoshabunko.com/empires/Detritus\\_stamps.html](http://www.yoshabunko.com/empires/Detritus_stamps.html)

# New Publications for our Members

## UNITED STATES

**Chicago's Main Post Office Building: The World's Largest**, by Emmett E. Cooper

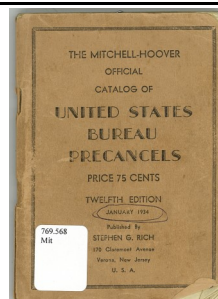
**Esper Presents More Children's Books and Their Connection to United States Postage Stamps**, by M. Rosina Major



**General Scheme of Ohio (1936)**, published by the United States Post Office Department

**An Introduction to the Postal History of Philadelphia and Philadelphia County**, by Wylie H. Flack

**The Mitchell-Hoover Catalog of Bureau Precancels, Twelfth Edition (January 1934)**

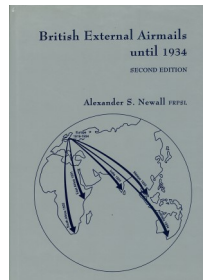
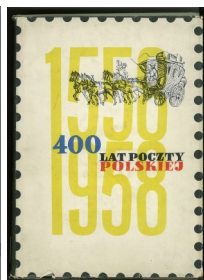
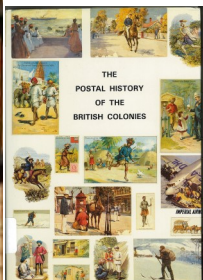


**Scott 2009 First Day Cover Catalog & Checklist**, by Michael A. Mellone

**U.S. Cancels 1890-1900**, by Sol Salkind

## AFRICA

**The Postal History of Tanganyika, 1915-1961**, by Edward N. Proud



## ASIA

**Catalog of Postage Stamps of the Countries of the Former USSR**, by Robert Duczek [in Polish]

**Catalogue of Zemstvo Postage Stamps**

**The Cherry Blossom Issues of Japan 1872-1876**, by Soichi Ichida [in Japanese]

**Exposition, Propaganda and Charity Labels of French Indochina in Southeast Asia**, by Terry A. Barham

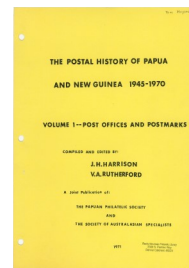
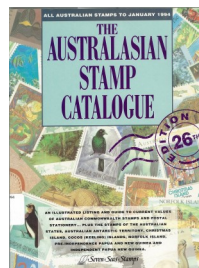
## AUSTRALIA and OCEANIA

**The Australasian Stamp Catalogue, 26<sup>th</sup> Edition (1994)**, published by Seven Seas Stamps

**Compact Australian Stamp Catalogue (1999)**, published by Seven Seas Stamps

**Galapagos Islands: A Philatelic Study**, by T.G. Dodd

**The Postal History of Papua and New Guinea 1945-1970: Volume 1 – Post Offices and Postmarks**, compiled and edited by J. H. Harrison and V.A. Rutherford



## EUROPE

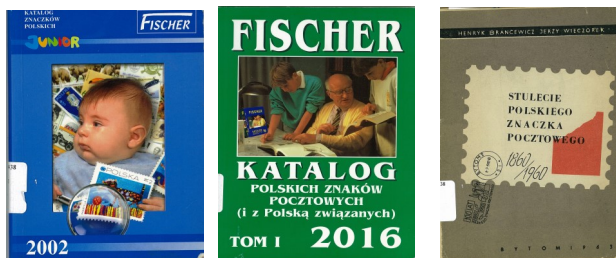
**400 Lat Poczty Polskiej** [in Polish]

**Austria Netto-Katalog Briefmarken (2021-2022)**

**British External Airmails until 1934**, by Alexander S. Newall

**Catalogue of Polish Postage Stamps (2002)**, published by Fischer

# New Publications for our Members



## EUROPE (continued)

*Catalogue of Polish Postal Markings: Tom II (1996)*, published by Fischer

*Catalogue of Polish Postal Markings: Tom II (2006)*, published by Fischer

*Catalogue of Polish Postal Markings (and Related Poland): Tom I (2016)*, published by Fischer

*Centenary of the Polish Postage Stamp*, by Henryk Brancewicz and Jerzy Wieczorek

*Céres Variétés Marianne, 1990*

*Československo 1918-1939 (2007)*, published by POFIS

*Československo, Česká Republika Pretektorát Čechy a Morava, Slovenská Republika, Slovenský Stát (2005)*, published by POFIS

*Correspondence During WWII from German Prisoner & Internment Camps in Poland*, by Stanislaw Baranski and Jozef Falkowski

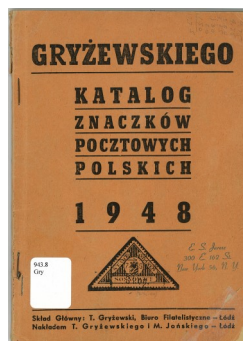


*DNK Deutschland Netto-Katalog (1966)*

*Globus-Länder-Netto Katalog: Deutschland (1966)*

*Greek Wars, 1897-1922, Stamps & Forgeries*, by P. Clark Souers

## EUROPE (continued)



*Gryzewskiego Katalog Znaczków Pocztowych Polskich (1948)*, by Tadeusz Gryżewski [in Polish]

*Katalog over Norges Frimerker*

*L'Exposition Universelle et International de Bruxelles 1958*, by Marc Panier

*A Magyar Bélyegnapok Filatéliai és Parafilatéliai Dokumentumai*, by Debreczeni Zsolt

*Magyar Legiposta-Magyarországi Repülőjratok, 1869-1978*, by John J. Latham

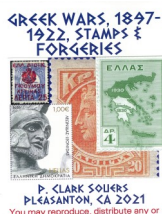
*Markenheftchen-Spezial Katalog BRD+Berlin*



*Michel Europa 2020 Band 3: Westeuropa: Andorra (Franz), Frankreich, Monaco*

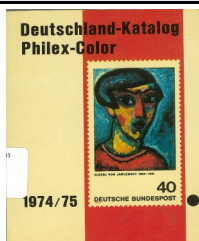
*Neuer Ganzsachen-Katalog: In Auftrag des Berliner Ganzsachen-Sammler-Verein; Europa* [three different volumes covering different parts of Europe; all in German]

*Philatelic Souvenir of the Centennial Celebrations of the First Polish Postage Stamp*, by Ludwik Steinbach [in Polish]

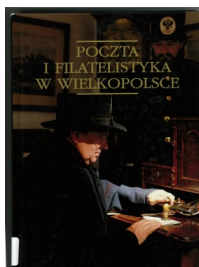


# New Publications for our Members

## EUROPE (continued)



*Philex Deutschland Briefmarken-Katalog (1974-1975)*



*Poczta i Filatelistyka w Wielkopolsce [Posts and Philately in Wielkopolskie],* by Antoni Karwacki

*Poczta Polska w 1944 Roku,* by Czeslaw Danowski



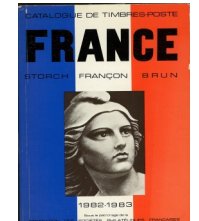
*Poland, Occupied in World War II, and Holocaust, 1939-1945: Philatelic History,* by Edward T. Superso

*Poland's Millennium in Philately,* compiled by Stanley J. Bykowski



*Polish Special Postmarks Catalogue, Part 2,* by J.C. Crimlisk and J. Kwiatkowski

*Postkrieg-Spezialkatalog 1948-1975, 3. Ausgabe,* by Dedo Burhop



*Stanley Gibbons Stamp Catalogue: Part 6, France (1987)*

*Timbres de France Marianne 1982-1983,* by J. Storch



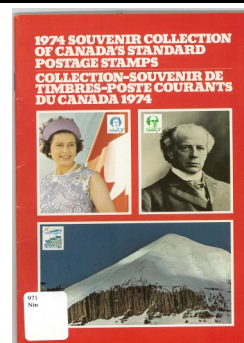
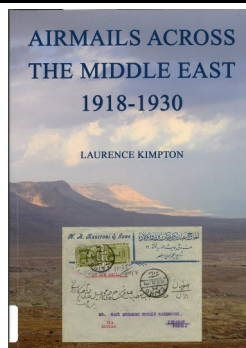
*Uit de Geschiedenis van het Luchtpostvervoer: Luchtpostcatalogus van Nederland en Overzeese Rijkdelen,* by J. Boesman

*Znaki Pocztowe Polski: (Z Notatek Starego Filatelisty)*

## MIDDLE EAST

*Airmails Across the Middle East 1918-1930,* by Laurence Kimpton

*Bale: the Stamps of Palestine Mandate, 1917-1948; Specialized Catalogue with Additions of Covers and Stationery, 2010*

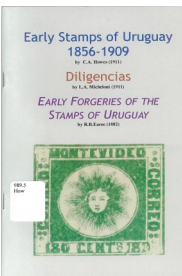


## NORTH AMERICA

*1974 Souvenir Collection of Canada's Standard Postage Stamps,* published by Canada Poste

## SOUTH AMERICA

*Early Stamps of Uruguay 1856-1909,* by C.A. Howes; *Diligencias,* by L.A. Micheloni; *Early Forgeries of the Stamps of Uruguay,* by R.B. Earee [three articles bound together]



## TOPICAL

*22<sup>nd</sup> Olympic Games in Philately* [in Russian]

*Blumen-Motivkatalog: Früchte, Nutzbäume, Pilze* [fruit, nuts, mushrooms], by Kurt Winter

*Catalogus Muziek op Postzegels,* by A. Bejik

# New Publications for our Members

## TOPICAL (continued)

**Katalogzusammenstellung der Marken mit Motiven aus dem Post-und Fernmeldewesen**, by Fritz E. Baeker

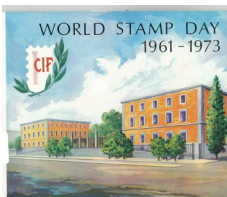
**Marinmalerei und Schiffsportrats auf Briefmarken**, by Winfried Asendorpf

**Meridians Hockey Philately**, by B.A. Yazunovok HH [in Russian]

**Musical Themes in Philately** [in Russian]

**Olympic Sport European Championships in Athletics** [in Czech]

**World Stamp Day 1961-1973**



## MISCELLANEOUS (continued)

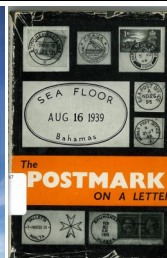
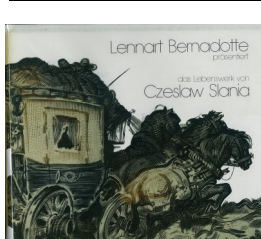
**Keys to Exhibiting**, by Janet Klug & Ann Triggler

**Das Lebenswerk von Czeslaw Slania**, by Lennart Bernadotte

**Luchtpostcatalogus van Nederland en Overzeese Rijksdelen (1998 and 2012 editions)**

**The Postmark on a Letter**, by K. Forster

**Stamp Collecting**, by Edward H. Spire



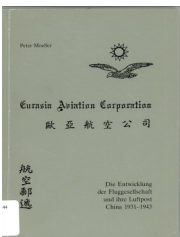
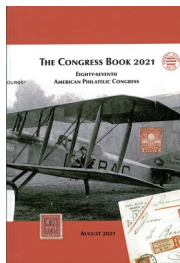
## POSTCARDS

**The Postcard Price Guide: A Comprehensive Listing**, by J. L. Mashburn

## MISCELLANEOUS

**The Development of KLM Airmail Service Holland - Dutch East Indies 1920 - 1942**

By M. Verkuil



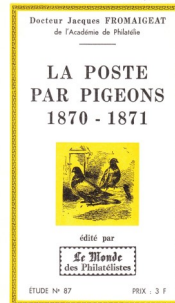
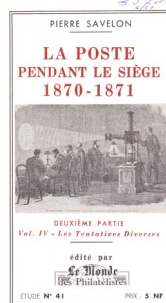
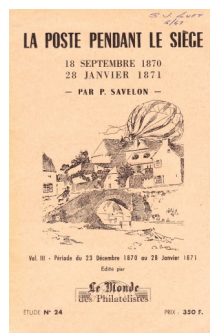
**(2007) Brookman US, United Nations, and Canada Stamps & Postal Collectibles**

**Collect First Day Covers (1984)**, published by BBP Publications

**The Development of KLM Airmail Service Holland-Dutch East Indies 1920-1942**, by M. Verkuil

**Eighty-Seventh American Philatelic Congress: August 2021, APS Stamp Show. The Congress Book**

**Eurasia Aviation Corporation: Eine Deutsch-Chinesische Fluggesellschaft in China und ihre Flugpost, 1931-1943**, by Peter Moeller



## NOTES FROM THE EDITOR

On the front page readers will find a memoriam article for Don Beuthel. He was one of the original signers of the Articles of Incorporation for the Library. Steve Bonowski continues with his series of articles on early Portuguese colony stamps, this feature focuses on the issues from 1910-1940. William Gum submitted a very interesting Danish West Indies cover for the "Covering the World" feature. The Rocky Mountain Stamp Show 2022 is quickly approaching. Several notices related to the show are included in this issue. We are still in need of volunteers to help with the show. New volunteers at the Library are still in urgent need. Don't forget to send me your articles, Vapid1000@gmail.com.

Charlie Freise

## DONATIONS

*The library thrives on the enthusiasm and generosity of its members. The following societies, clubs, and individuals made donations to the Library since the last donation listing. These donations were made from November 18, 2021 through January 24, 2022. Thank you!*

### SOCIETY AND CLUB DONATIONS

Aurora Stamp Club  
Colorado Postal History Society  
Scandinavian Collectors Club

### INDIVIDUAL DONATIONS

Anonymous	R. T. Lansing
Ardith Barnhorst	Kenneth Luke
Roger Cichorz	Will Mahoney
John Clement	Steve McGill
Biswajit Das	Dasa Metzler
Laurence DeMuth, Jr.	Kari Monson
Robert Dunn	James Morrato
Vernon Evenson	Terrence Murphy
Nolan Flowers	Alexander Papp
Patrick Gartland	Rich Porter
Rod Haenni	Bobbie Rapp
Susan Haffke	James Reichman
Jason Hatt	Jane Scofield
Hannah Henry	Martin Severe
Ronald Hill	Rick Simms
Ernest Hinck	Barbara Smith
Gene Holgate	Annette Uhlfelder
Norman Jacobs	Nancy Ulrich
Charlie Johns	Jack Van Ens
Joseph Lanotte	

## NOTES FROM THE LIBRARIAN

A patron came to the library to look up information about an obscure cachet. Finding anything on the internet was a joke. At the library, he found books on his subject but they didn't quite answer his questions. Then he had an idea. He hit up our vertical files. There, he found all the information he needed.

What's a vertical file? Libraries keep various clippings out of magazines, newspapers and other documents and sort them by subject matter. The files at the RMPL are divided into U.S. stamps (by Scott number), topical files, geographic files and regular stamp collecting files. We have information from the very broad to the very obscure. A great team of people work on these files to keep them current. Thanks to Regina Domenici, Paul Albright, the late Don Beuthel and some others we have the most educational vertical files around! Stop by and take a look.

Sherri Soraci-Jennings

## NEW MEMBERS

We extend a warm welcome to new members who have joined the library from October 1, 2021 through January 15, 2022.

**Spencer Burt**, Thornton, CO

**Edward (Ted) Homen**, Evergreen, CO - collects worldwide

**Barry S. Kues**, Albuquerque, NM - collects US and foreign covers, postcards

**Jeff Morse**, Denver, CO - collects US plate blocks

**Aldona Pilius**, Mariottsville, MD - collects Lithuania, wine on stamps, COVID 19

**Ulje Przekwas**, Denver, CO - collects topical and journaling

**Jeremiah Redd**, Strasburg, CO - youth member - collects automobiles, wildlife, architecture and the 50 states

**Stanley Ross**, Aurora, CO - collects worldwide

**Karen Schmidt**, Thornton, CO - collects Love, US Christmas and Sweden

**Chris Seager**, Galt, CA

**Jay Smith**, Snow Camp, NC - Dealer - Scandinavia, and US, collects France, North Carolina Postal History and history of philately.

**Sue Trammel**, Stockton, CA

**Arthur Wilkonson**, Greenwood Village, CO - collects US

**John K. Will**, Arvada, CO - collects US classics and worldwide

**Please Note:** New members and membership renewals received after January 15, 2022 will be acknowledged in the next issue of *Scribblings*.

# Library Calendar of Events



The RMPL Operations Manager, Steve Schweighofer, maintains a calendar of reserved club times. Clubs should check the calendar regularly and notify Steve ([steve.schweighofer@comcast.net](mailto:steve.schweighofer@comcast.net)) of any updates or changes. Requests to reserve meeting space and time for philatelically related meetings other than those listed here must be approved and scheduled with Steve well in advance. Call the Library or the appropriate club to confirm the place and time.

**Hours of Operation:**  
Mon - Sat: 10:00 AM - 2:00 PM  
Closed Sundays and Holidays  
Phone: (303) 759-9921  
Email: [rmpl@qwestoffice.net](mailto:rmpl@qwestoffice.net)

## \*\*\*MARCH 2022\*\*\*

- Mar 5 Sat** meeting 10 AM  
Scandinavian Collectors Club
- Mar 5 Sat** meeting 1PM  
TOPical Philatelists In Colorado (TOPIC)
- Mar 8 Tue** meeting 7:30 PM  
Collectors' Club of Denver
- Mar 9 Wed** meeting 7 PM  
Denver Germany Stamp Club
- Mar 10 Thu** meeting 2 PM  
Cherrellyn Stamp Club
- Mar 12 Sat 9AM**  
**Second Saturday at the RMPL**  
Presenter: John Blanyer  
Title: The Milky Way Galaxy
- Mar 12 Sat** meeting 10 AM  
Mexico/Latin America Club
- Mar 12 Sat** meeting 1 PM  
Colorado Postal History Society
- Mar 13 Sun** meeting 1PM  
Denver Postcard Club
- Mar 19 Sat** meeting 9:30 AM  
Metro Denver Young Collectors
- Mar 20 Sun** meeting 1 PM  
Great Britain and Commonwealth Collectors Club
- Mar 22 Tue** meeting 7 PM  
Rocky Mountain Stamp Show committee
- Mar 23 Wed** meeting 11 AM  
Denver Stamp Club
- Mar 24 Thu** RMPL Board of Directors meeting 4 PM
- Mar 26 Sat** local dealers bourse 10 AM

## \*\*\*APRIL 2022\*\*\*

- Apr 2 Sat** meeting 10 AM  
Scandinavian Collectors Club
- Apr 2 Sat** meeting 1 PM  
TOPical Philatelists In Colorado (TOPIC)
- Apr 9 Sat 9AM**  
**Second Saturday at the RMPL**  
Presenter: Steve Nadler  
Title: Scandinavian Postal History on Postcards
- Apr 9 Sat** meeting 10 AM  
Mexico/Latin America Club
- Apr 9 Sat** meeting 11:30 AM  
Rocky Mountain Aero and Astrophilately Club
- Apr 10 Sun** meeting 1 PM  
Denver Postcard Club
- Apr 12 Tue** meeting 7:30 PM  
Collectors' Club of Denver
- Apr 13 Wed** meeting 7 PM  
Denver Germany Stamp Club
- Apr 14 Thu** meeting 2 PM  
Cherrellyn Stamp Club
- Apr 16 Sat** meeting 9:30 AM  
Metro Denver Young Collectors
- Apr 17 Sun** meeting 1 PM  
Great Britain & Commonwealth Collectors Club
- Apr 26 Tue** meeting 7 PM  
Rocky Mountain Stamp Show committee
- Apr 27 Wed** meeting 11 AM  
Denver Stamp Club

**Change to Library Hours of Operation  
Effective March 1st, 2022  
Monday - Saturday: 10:00 AM - 2:00 PM  
Closed: Sundays and Holidays**