

Scribblings

...from the Rocky Mountain Philatelic Library



Sherrí Soraci-Jennings, Librarian

Vol. 29 - No. 3
www.rmpldenver.org

2038 South Pontiac Way, Denver, CO 80224-2412
(303) 759-9921

May / Jun 2021
Email - rmpl@qwestoffice.net

IN THIS ISSUE

- Human Letters** by The Postal Museum Team, London.... 1
- President's Message** by Tonny Van Loij..... 2
- The Postal Museum (London)**..... 5



- RMPL Video Production News** by Joe Lanotte..... 6



- New Card Catalog** by Sherrí Soraci-Jennings..... 7
- RMPL Auctions Announcement**..... 7
- New on the Shelves** 8
- Second Saturday Programs** by Nadler and Vora 11
- Covering the World: Philatelic Fish Stories** by John Bloor..... 12
- Donations** 13



- RMPL Board Minutes** ... 14
- New Members** 15
- Letter From the Editor** .. 15
- Activities Calendar**..... 16

Human Letters

By The Postal Museum Team, London
Previously posted on the *The Postal Museum Blog* Feb. 23, 2018



Fig. 1. In 1909, two suffragettes made a daring attempt to see Mr Asquith, the prime minister, by posting themselves to his residence at 10 Downing Street. This is a photograph of the messenger boy, Miss Solomon and Miss McLellan outside 10 Downing Street.

On 23 February 1909, two ladies presented themselves at the East Strand post office and asked to be taken by an Express Messenger to 10 Downing Street (Fig. 1). At the time, the Post Office offered a service where 'Postmasters may arrange for the conduct of a person to an address by an Express Messenger' (Fig. 2).

(Continued on page 3)

Scribblings

Newsletter of the
Rocky Mountain Philatelic Library

2038 So. Pontiac Way
Denver, CO 80224
Phone: (303) 759-9921
email: rmpl@qwestoffice.net
Hours: 10 a.m. to 4 p.m. daily,
Thursday, 2 p.m. to 8 p.m.
Closed Sundays & Holidays

Editor

Jeff Modesitt (jeffmcolorado@gmail.com)

Copy Editors / Proofreaders

John Bloor
Paul Domenici, Roger Rydberg,
Steve Schweighofer

Librarian

Sherri Soraci-Jennings

Scribblings is published bimonthly by the Rocky Mountain Philatelic Library. The RMPL is a chartered Colorado nonprofit corporation and is an IRS-designated 501(c)(3) charitable organization. Membership subscriptions over that for the contributing membership, and donations of appropriate philatelic materials, may be deductible for US income tax purposes. The Library is a volunteer organization. Financial donations, philatelic books, stamps, supplies and donations of your time are welcome.

A basic membership with the RMPL is \$25 per year and includes checkout privileges and six issues of *Scribblings*. Call for more information.

President Tonny Van Loij
Vice President Jim Kilbane
Operations Manager Steve Schweighofer
Stamp Manager Dasa Metzler
Corresponding Secretary . Paul Domenici
Recording Secretary Regina Domenici
Treasurer William Douglass
Bookkeeper Eddie Hackstaff

Directors:

Eric Carlson Rod Haenni
Rich Palestro Gary Withrow
Ex-officio member Don Dhonau

Officers and Directors may be contacted
through the RMPL.

Web page — www.rmpldenver.org

President's Message

I hope that you all had a happy Easter even though some had to do without the family. I hope that COVID19 will start tapering down now that more and more people are getting the vaccine.



At the last board meeting, new board members were installed and a lot of projects were discussed. You will read them in the published minutes found on page 14. Some are more pressing than others, but all will be evaluated and, depending on cost and merit, get the Board go-ahead.

As for COVID regulations, there was hope that we could do without masks and be able to decrease library capacity restrictions. The Colorado Governor, however, put a halt to this and, sadly enough, we have to follow government mandates. So, library attendees must wear masks and attendance is restricted to 14 people at any one time.

On a better note, as you will read, we had a super auction result thanks to many people involved. Led by Paul Domenici, Gary Withrow, and Eddie Hackstaff, the crew of volunteers worked countless hours to make the auction exceptional.

Accompanying this *Scribblings* you will have found an auction catalog for the material that would normally be sold during the annual Rocky Mountain Stamp Show. Since we cannot have the show due to the reservation of the Arapahoe Fairgrounds facility by Tri-County Health for emergency medical purposes, it will be held live at 2048 Pontiac Way and online. As always, your participation is critical, especially with auctions taking on a more and more significant role in funding our operations!

On a final note, Jeff Modesitt, *Scribblings*' editor for the past six years has resigned and we are now actively searching for his replacement. If you are interested, please contact me.

Stay safe, stay healthy,
Tonny Van Loij

RMPL FEBRUARY AUCTION RECAP

The silent auction featuring country lots, cover lots, and large lots was a big success. There were 112 bidders, of which 30 were out of state (two international). All 525 lots sold for minimum bid or above for a total of \$23,500. After deducting expenses, the Library netted \$21,467. A big thank you to everyone who submitted bids!

The RMPL Auction Team

(Continued from page 1)

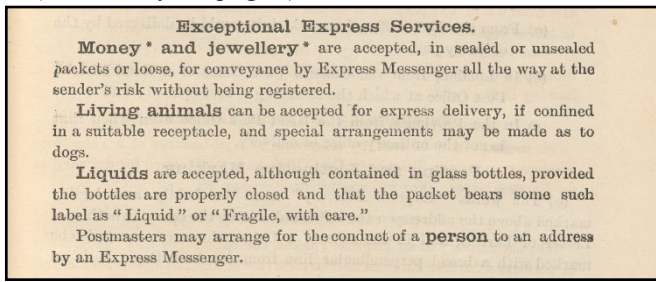


Fig. 2. The Post Office Guide, page 33. January 1909 notes that 'Postmaster may arrange for the conduct of a person to an address by Express Messenger'.

The form requesting this delivery has survived. As you can see (Fig. 3), it shows that the 'delivery' was handed in at 2:16pm and dispatched at 2:17pm. It cost 3d to send the ladies. The messenger returned at 3:15pm having waited 10 minutes which, according to the *Post Office Guide*, was the usual amount of a time that a messenger would wait to deliver a package.

Staff at the post office accepted the request una-

Postmasters—No. 195. E. No. 183202

EXPRESS DELIVERY

Distance from Office of Delivery, or, in the case of a Reply or Further Service, the distance between the two Addresses: M. P.

Number of Articles (If more than one)

If received by Post the words "Mail Letter" or "Mail Parcel" to be inserted here

Office Date Stamp: EAST STRAND

CHARGES.

Postage (Service II.)	Express Fee	Weight Fee	Registration Fee	For articles above one	For Special Conveyance	Waiting Fee
Prepaid by Sender	3					
To be collected from Addressee						

ADDRESS OF ARTICLE: 10 Downing St

Handed in at 2:16 p.m. Messenger No. 25 despatched at 2:17 p.m.

Messenger returned at 3:15 p.m. Initials of Counter Officer: [initials]

Postage Stamps to be affixed here by the sender.

Cost of delivery (Value of personal labour only; to be entered on Messenger's return): 3d.

Received by _____ at _____

1 & S 2970 [6362] 10m 8/07sv 980

Fig. 3. Express Delivery (Form 195) authorizing the 'delivery' of two women to the Prime Minister at 10 Downing Street for a 3d fee.

ware of what was about to take place. One report within the file noted that the ladies 'were not placarded and neither were their intentions known'. If they had known they would probably have reacted quite differently!

A messenger called A S Palmer escorted the two ladies, a Miss Solomon and a Miss McLellan, by now both carrying placards, to Downing Street. When the party reached the Prime Minister's residence the police would not let either lady inside. The messenger went inside to try and deliver the 'letters' in his charge but his request was refused. As the *Daily Mirror* pointed out, 'Though the regulations provide for a person to be sent as a letter there is no law or regulation which compels the addressee to accept delivery'.

'Dead letters'

According to the *Daily Graphic*, Miss Solomon protested that they had been paid for. 'Well then,' she was told 'the Post Office must deliver you somewhere else. You can't be delivered here'. Miss Solomon was determined. 'The express letter is an official document and must be signed, according to the regulations.' At which point she was told, 'It can't be signed. You must be returned. You are dead letters'. 'Dead letters' were ones that could not be successfully delivered.

As the beady-eyed amongst you may have noticed that there are spaces at the bottom of the Express Delivery form for a signature and a time of delivery. These have been left blank because the messenger was unable to deliver the ladies. Unfortunately, as you will see below, the hapless Mr Palmer had to fill out a report explaining why he had not obtained a signature.

Postmasters—No. 19. Enclosed with report dated _____

Name: A. S. Palmer
 Rank: Messenger 25

You are requested to furnish at once your explanation as to why no signature was obtained on a Report Form 195.

Signature: [Signature]
 Rank: [Rank]

Reply here and overleaf. Date: 23rd Feb 1909

The Postmaster: In reply to a letter in reply to the above report that I took the 2 ladies to the Queen's house but the police would not let them go in. I was informed that the letter would not sign the form because it did not have the letter to sign for because the ladies themselves said they were the ladies and were illegible.

requests to see them
 Jan 25
 Your Obedient Servant
 A. S. Palmer

Name: _____
 Rank: _____
 Initials and Date: _____

Fig. 4. Report on why no signature was obtained.

The *Dundee Courier* reported that Mr Palmer accompanied Miss Solomon and Miss McLellan back to the post office. He eventually returned them to the office of the Women's Social and Political Union (WSPU), which had come up with the idea of sending two of its members to Downing Street by Express Messenger.

Disturbances at the House of Commons

Miss Solomon and Miss McLellan may have failed in their mission to see the Prime Minister but, in terms of publicity, it was a very effective stunt. It attracted quite the crowd and was widely reported in the newspapers, even making the front page of the *Daily Mirror*. Miss Jessie Kenney, a prominent suffragette, told *The Daily News* that 'Our idea was to give Mr Asquith [the prime minister] due notice of the deputation which will wait upon Parliament tomorrow'. The purpose of the deputation was to ask for the addition of votes for women in the forthcoming legislative programme.

While this attempt to see Mr Asquith did not result in any arrests, the deputation that Miss Solomon and Miss McLellan had wanted to publicise certainly did. Several members of the WSPU tried to enter the House of Commons resulting in the arrest of 29 of them, including Daisy Dorothea Solomon. She was the same Miss Solomon who tried to have herself delivered to 10 Downing Street. She was the daughter of Georgina Solomon, who was also a suffragette.

As for the Post Office, a circular was hurriedly issued (Fig. 5) for the attention of London Postal Region staff stating that 'Such a service [to Miss Solomon and Miss McLellan] should not have been accepted, and instructions should be given that such services to members of the Government, or to members of Parliament or to anyone at the House of Parliament should be refused by Counter Officers'.

The Scottish 'human letter'

Although counter staff in London had been informed to be wary of suffragettes commandeering the Express Delivery service for their own purposes, this warning had not reached Scotland. On 11 September 1912, Winston Churchill was due to give a speech in Dundee. A suffragette called Lila Clunas was denied entry to the hall where he was to give it.

However, Miss Clunas was clearly a resourceful woman who was not going to be thwarted! According to the *Aberdeen Daily Journal*, 'Fastening a card on her breast addressed to Mr. Churchill at his residence, she entered the Post Office and requested to be delivered by express messenger. The order was accepted. She paid the regulation fee of 3d and was duly despatched to the residence in charge of the telegraph

boy'.

Unfortunately, just like Miss Solomon and Miss McLellan before her, she also failed in her attempt. Mr Churchill's private secretary told her that he was 'not at home to callers, even though they were stamped with the imprimatur [approval] of His Majesty's postal authorities'. She left defeated.

If you would like to know more about the suffragettes trying to post themselves to 10 Downing Street visit the [Parliamentary Archives](#) website.

– Louise Todd, Archivist

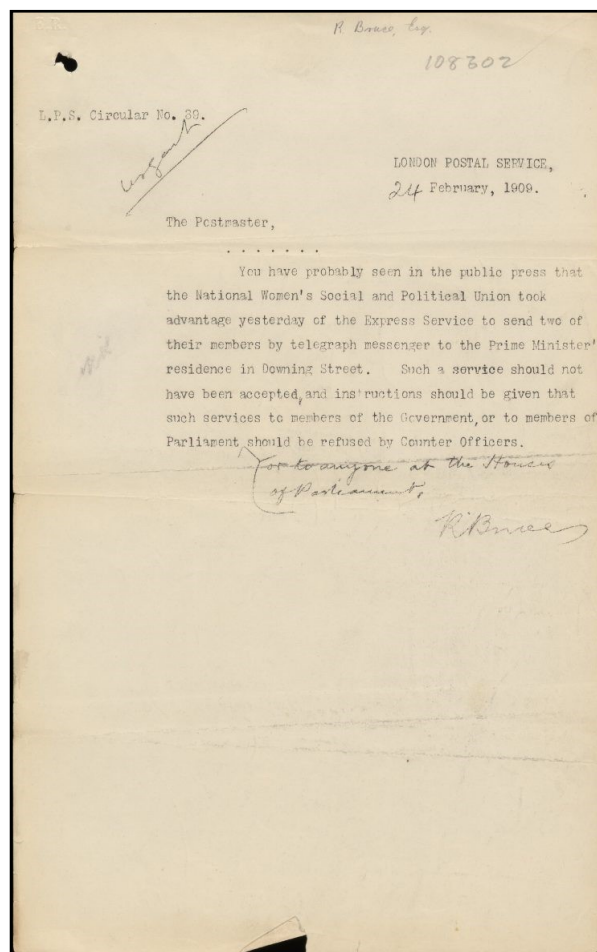


Fig. 5. London Postal Region Circular No. 39

Sources

- The Royal Mail Archive at The Postal Museum:
Express delivery service: Suffragettes conveyed to Prime Minister's residence as express letters, c. 1909 (POST 30/1655a), and
Post Office Guide, 1909 (POST 92/122)
 Norman Watson, *Suffragettes and the Post* (2010, printed by Robertson Printers, Forfar, Angus)
 British Newspaper Archive:
Dundee Courier, 24 February 1909
Manchester Courier, 25 February 1909
Aberdeen Press and Journal, 12 September 1912
Note: British spelling and punctuation kept as originally written.

The Postal Museum

(London)



Our thanks to the Postal Museum staff for letting us reprint the *Human Letter*. Because many stamp collectors are not familiar with what this exceptional institution has to offer, I hope this brief introduction incentivizes you to visit should you find yourself in London. Due to COVID, the museum is currently closed, but plans are to open in May 2021.

Unlike many facilities that were built to house objects of special interest, The Postal Museum and its Mail Rail was and is itself an object of special interest. Originally constructed over 100 years ago to carry mail under the streets of London, the museum offers glimpses into the past through its recent preservation of parts of the old system.

1911 was a very interesting year for the British Post Office. Not only was the first British airmail flown between Hendon and Windsor, but planning began for 6.5 miles of underground rail to be used specifically for the transportation of the mail. Traffic congestion was a primary incentive. Narrow streets and a dynamic economy made many of the major thoroughfares almost unpassable. With a reputation for efficiency and timely deliveries, delays were not acceptable.

Construction was started in 1915, but was not completed until 1927 due to WWI. The main tunnels are 9 feet in diameter and run about 70 feet below ground. Back in the day, the post office underground railroad system operated 22 hours a day. By the early 2000s, there were concerns that the cost of the rail line was many times that of

hauling mail by truck, but those numbers were hotly contested. Regardless, the system was mothballed in 2003, only to rise like a phoenix in 2017 as an integral part of the Postal Museum.

In addition to being able to actually ride the rails (some restrictions apply), the Postal Museum offers a tour of a mail sorting station and numerous exhibits. There is also a walking tour planned once the museum is reopened.

For those history buffs among us, being able to see history (almost) in action is worth the trip. Even if a visit to London is not part of your plans, make sure to visit the Museum's web site and sign up for their regular blog. It is fun and informative.



RMPL Video Production News

By Joe Lanotte

It has been a somewhat hectic year, punctuated by delays resulting from the COVID virus. The virus has really hampered our ability to timely release videos. Even so, the video production staff has managed to release several new videos, digitized several VHS tapes found on the library shelves, continued digitizing the many carousels of 35 mm slides stored in the Annex, and put together a totally new RMPL Video Library contained on either a 32 GB USB flash drive or microSDXC memory card. All of the videos are in .mp4 format and are full HD 1920 x 1080p resolution. The RMPL Video Library is available for sale for \$8 plus tax and shipping where required. Requests for ordering information should be emailed to rmplvideoproductions@gmail.com

Our current video library consists of 35 videos, all of which can be found on the RMPL website under the Publications tab, on YouTube, and on our recently released RMPL Video Library. The video library currently consists of 15 RMPL productions, 10 Club productions and 10 presentations from the 2019 Rocky Mountain Stamp Show.

Our most recent additions to the video library are:

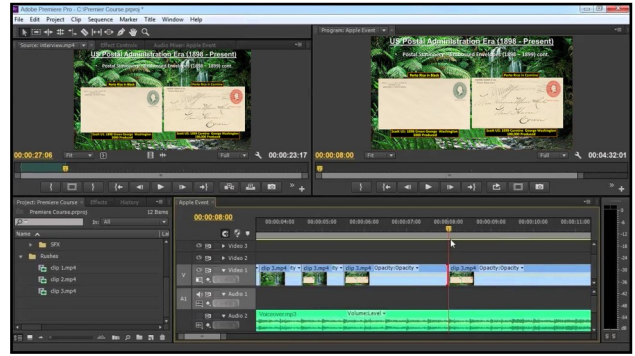
- *Unravelling Puerto Rico Philately – Part 1* presented by Sergio Lugo;
- *Mexico 1914 – The Denver Eagles* presented by Ron Mitchell and restored from VHS; and
- *This is MEPSI* an introduction to the Mexican Elmhurst Philatelic Society International.

We are currently in the production stages of:

- a multipart series *Mountaineering in the Himalaya* presented by Eddie Hackstaff;
- *Unravelling Puerto Rico Philately – Part 2* presented by Sergio Lugo; and
- a series on the specialized collections of Dr. James Paul on *Zeppelin Mail* and *German Offices and Colonies of the late 19th and early 20th centuries* presented by Patrick McNally and Sergio Lugo.

Viewership for our videos has been very encouraging. At the time of this writing, we have over 39,000 views of our 35 videos with over 2,100 views in just the last month.

The RMPL video production staff is entirely made up of volunteers who compose the scripts, design the graphics and produce the finished videos. Our time invested in this is considerable. The cost of video equipment - cameras, microphones, recorders, and software is considerable as well. The video team is



constantly in need of replacing or upgrading our equipment which is an expensive undertaking. In the past, several donations have helped us meet these needs, but we are once again in need of additional funding. We need a replacement video camera for our current one which is over 15 years old. During that time, video standards have changed dramatically to the point where our current camera is unable to meet these new standards. We welcome any contributions of a suitable video camera or funds for our video



equipment needs, thereby allowing us to provide state of the art videos and help generate interest in our hobby. We would also welcome all contributions of subject matter expertise and presentation materials for use in a video. All interested parties are encouraged to contact either Joe Lanotte or Sergio Lugo or emailing rmplvideoproductions@gmail.com



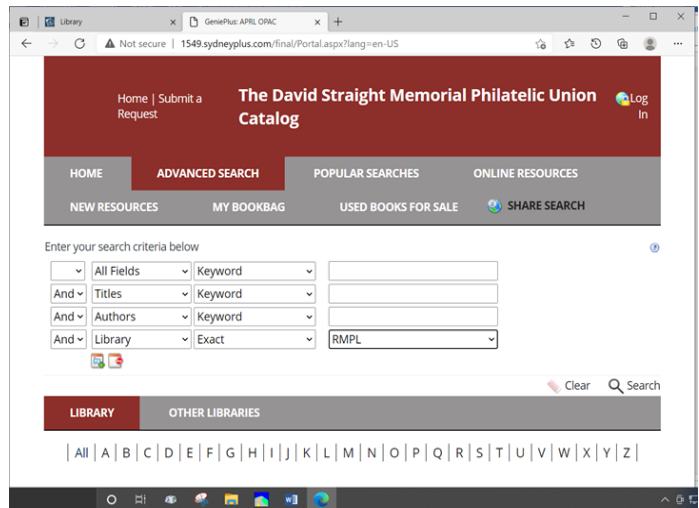
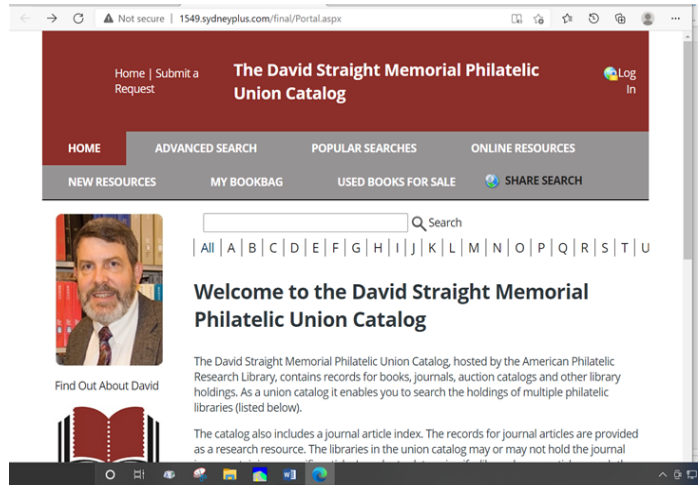
New Card Catalog

By Sherri Soraci-Jennings, Librarian

The conversion to the NEW card catalog is complete. The Union Catalog can find books, serials, or articles from every philatelic library in the United States. Go to the American Philatelic Research Library (<http://stamps.org/services/library>) Click on NEW Online Catalog (under Accessing Our Library Collections). This will take you to the page that reads “Welcome to the David Straight Memorial Philatelic Union Catalog.”

If you simply type your search into the search bar on the first page, you’ll get every item that contains your term, in every philatelic library. More terms will give you fewer results. For instance, if you want to look for books on Egyptian revenues and you type just Egypt, you’ll get hundreds of hits. Type in Egypt revenues to limit your search parameters.

In order to limit your search to just the RMPL, you’ll want to go to Advanced search. This is the second tab over. Set the library to RMPL and type your request in the search box to see only what our library has to offer. We have quite a bit! Explore the library by using our new card catalog. If you have questions, be sure to ask the librarian.



RMPL Auctions Announcement

There have been requests from several members to consign lots in the RMPL auctions. As a service to the membership the RMPL auction team will accept a limited number of consignments, on a trial basis for our next three auctions, Oct 2021, Feb 2022 and May 2022. The following guidelines will be followed:

- ◆ Consignor must be a member of the RMPL
- ◆ Consignor may consign up to 5 lots in each auction
- ◆ The number of consigned lots will be limited to 10-15% of the lots in any auction
- ◆ The consignor will be responsible for scanning and describing their lots
- ◆ Lots must be submitted to the Auction Manager by the following dates
 - * Oct 2021 lots are due no later than 6/1/2021
 - * Feb 2022 lots are due no later than 10/1/2021
 - * May 2022 lots are due no later than 1/1/2022

- ◆ You may notify the Auction Manager if you intend to consign and we will hold your reservation
- ◆ Consigned lots must follow the “theme” of the auction, for example country lots, bulk lots or single stamps, sets, or covers
- ◆ The auction staff will work with the consignor to establish the starting bid for each lot
- ◆ Payment will be made to the consignor no later than 45 days after the close of the auction
- ◆ Ownership of the lots remains with the consignor
- ◆ The RMPL will pay the shipping costs for the lots
- ◆ Consigned lots will be anonymous
- ◆ The RMPL will charge 25% of the winning bid for each lot

After the third auction the auction management will meet to decide if we will continue to accept consignments in future auctions.

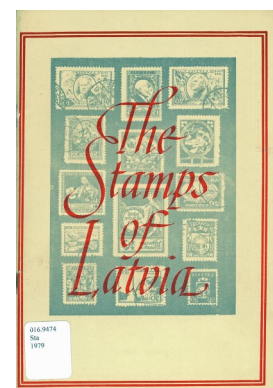
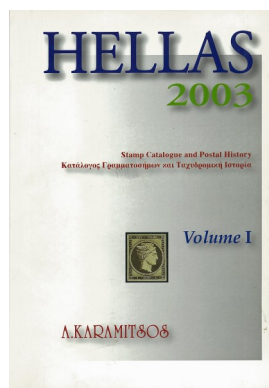
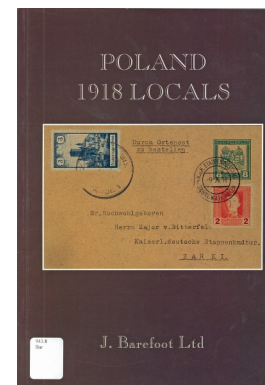
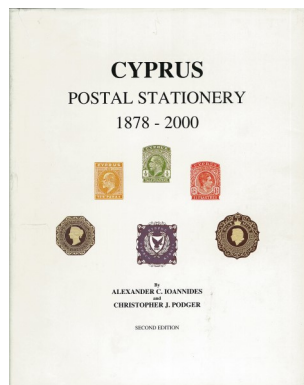
To reserve your consignment slots or for additional information, email AuctionMgr@rmplauctions.org or send a request to the RMPL ATTN: Auction Manager.

NEW ON THE SHELVES

UNITED STATES

Catalog of United States Perfins: A Catalog of Perfins in United States Postage Stamps 1908-2018

Durland Standard Plate Number Catalog, 2020 Edition, published by the United States Stamp Society



Pocket Stamp Catalog, 1997 and 1998 editions, published by Scott Publishing Co.

ASIA

The 1929 Airmail Stamps of India: A Glimpse of 6 Stamps, by Dipak Dave, Priti Dave, and Markand Dave

Die Flugpost der Volksrepublik China, by Peter Moeller

EUROPE

Catalogo Completo dei Francobolli d'Italia e Paesi Italiani (1999; 58th Edizione), published by Sassone

Catálogo de Sellos de España de 1850 a 1987, published by FILABO

Catálogo Especial de los Sellos de Colonias y Ex-Colonias Española de Correos y Telegrafos, by M. Galvez

Catalogue of the Hungarian Stamps (1997) [in Hungarian]

Catalogue des Timbres Suisse (1998)

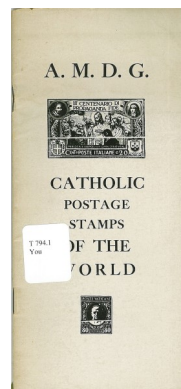
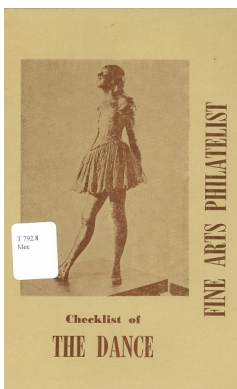
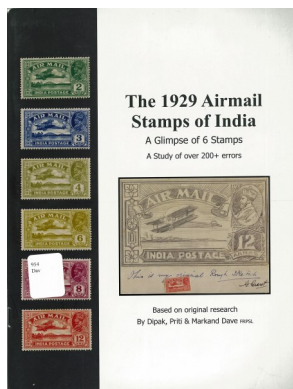
El Correo Aéreo en la Guerra Civil Española: Zona Republicana (1936-1939), by Felix Gómez-Guillamón

CSR Revenue and Railway Stamps, by Severin Gottsmich

Cyprus Postal Stationery 1878-2000, by Alexander C. Ioannides and Christopher J. Podger

Dansk Luftpost, by Mats Hedelius [in Danish]

Fiatelistyka Współczesna, by Włodzimierz Goszcynski



Ganzsachen-Spezial-Katalog Deutschland ab 1933, published by Borek

12th Edition (1840-1998), published by Sarum Publications Ltd.

Glossary of Philatelic Terminology, by Ludvik Z. Svoboda [Czech/Slovak-English & English-Czech/Slovak]

Norwegian Air Mail, by Egil H. Thomassen

Hellas Stamp Catalogue and Postal History (2003), volumes I & II [in Greek & English]

Le Patrimoine de la Poste, published by FLOHIC

Krakowski Ruch Filatelistyczny 1893-1968

The Philately of 20th Century Post-War Reconstruction, by Stephen Luster

Magyar Posta-És Illetékbélyeg Katalógus (1999) [in Hungarian]

Poland No. 1, by V. Rachmanoff

Michel-Europa-Katalog Band 3: Nord- und Nordwesteuropa Südwesteuropa 2001/2002

Poland 1918 Locals, by J. Barefoot

Michel-Europa-Katalog Band 3: Südeuropa 2006/2007

Poland, Occupied in World War II and Holocaust 1939-1945: Philatelic History, by Edward T. Superson

Michel-Europa-Katalog Band 2: Südwesteuropa, 2007

Poland Revenues, by J. Barefoot

Michel-Europa-Katalog Band 1: West- und Mitteleuropa 2001/2002

Polish Post Seven Years War: 1939-1945, by Harold Montague Smith

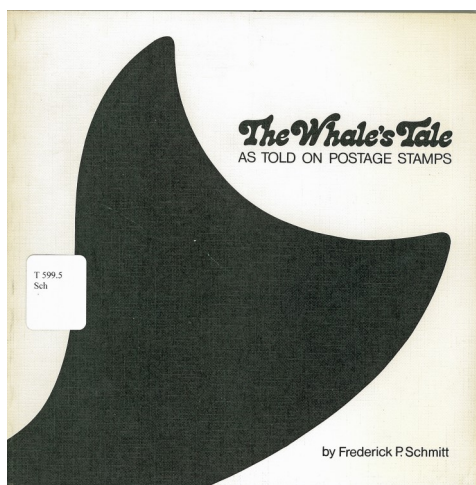
Michel Mitteleuropa 2014

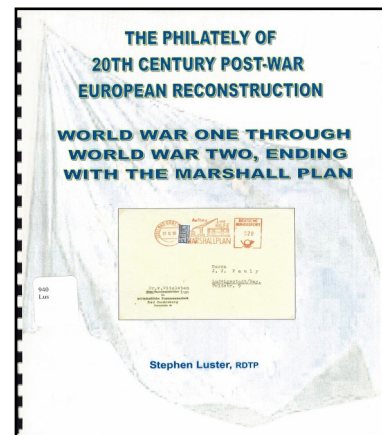
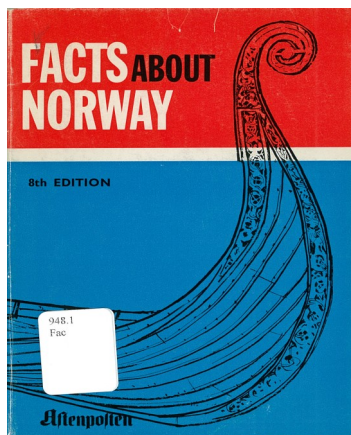
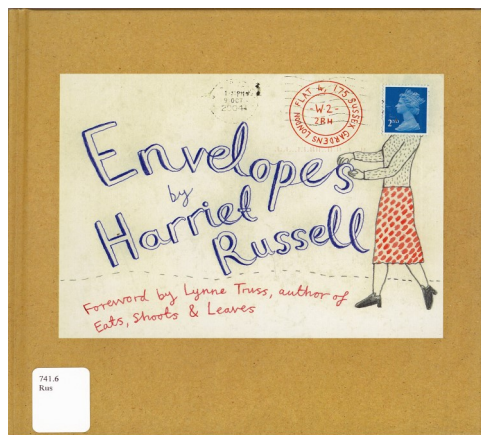
Pieczęcie Pocztowe na Ziemiach Polski W XVIII Wieku (1762-1800), by Stanislaw Mikstein

New Stoneham Great Britain Stamp Catalogue,

Poczty Wojskowe, by Wladyslaw Kowarzyk

Postage Stamps of Lithuania





Spezial Katalog Amsterdam-Anchorage-Tokyo 1-11-58) Polarfluge der KLM

Stadtpostämter im Besetzten Polen 1915-1918, by Stefan Petriuk

The Stamps of Latvia

Europa Katalog 1951, published by Zumstein

MIDDLE EAST

Bale Catalogue of Israel Stamps (1998), compiled by Michael H. Bale

NORTH AMERICA

The Canadian Revenue Stamp Catalogue (2017 Edition), by Erling S.J. Van Dam

TOPICAL

Catholic Postage Stamps of the World, by Charles J. Reilly

Checklist of the Dance and Dance Masks, by Louise Mecinski

Farmaciens Historie På Frimærker, by Paul Reinhardt Kruse

The Race to the Moon Chronicled in Stamps, Postcards, and Postmarks: A Story of Puffery vs. the Pragmatic, by Umberto Cavallaro

Stanley Gibbons: Collect Chess on Stamps, by James S. Young

The Whale's Tale as Told on Postage Stamps, by Frederick P. Schmitt

POSTCARDS

Printing On Stamps, compiled by Mark Harris Winnegrad

MISCELLANEOUS

About Philately for Everyone, by Valerii Cherednychenko [cyrillic alphabet/Ukrainian]

American Air Mail Catalogue (1940): Reference Listing of the Airposts of the World

The Dealers' Guide to the Chemical Restoration of Stamps

Dx-Philately, by Christer Brunström

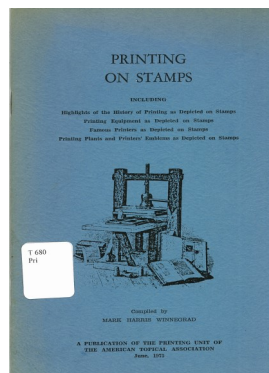
Fell's Profitable Stamp Guide, by Franklin R. Bruns, Jr.

Handbook for Philatelists: Manufacture of Stamps, Reprints, and Counterfeits, by Sigurd Tullberg

NON-PHILATELIC

Envelopes: A Puzzling Journey Through the Royal Mail, by Harriet Russell

Facts About Norway, 8th Edition (1964)



SECOND SATURDAY PROGRAMS AT THE LIBRARY

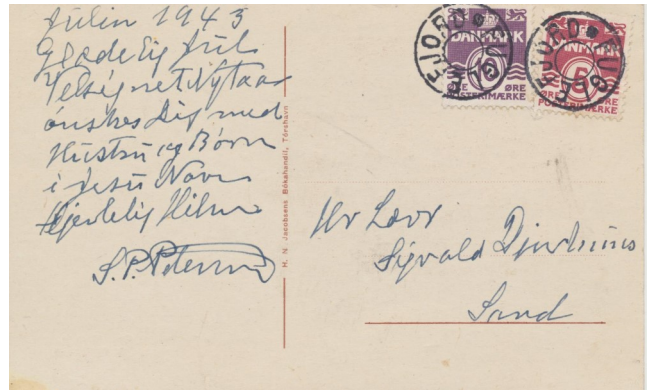
Second Saturday programs are sponsored by the RMPL and attract a friendly group of folks who are interested in a specific subject, or who are interested in learning more about an area of philately that may be new to them.

Contact Jim Kilbane if you would like to present a program. His email address is: aurora_80017@yahoo.com

May 8, 2021--9:00 a.m.

An Interactive Discussion about Postcard and Postal Card
Postal History Using “Show and Tell” Scans

Presenter: Steve Nadler



June 12, 2021--9:00 a.m.

19th CENTURY: US-INDIA HISTORY VIA PHILATELY
An Exploratory / Interactive Presentation

Presenter: Ravi Vora



COVERING THE WORLD

Interesting covers from around the world

By John Bloor



This is the fourth in a new series of columns in *Scribblings* titled “Covering the World”. Each issue will have one or two pages displaying one to four covers that we hope our members find especially interesting or attractive. All of our members are asked to contribute scans of covers along with brief information about the cover and why you like it. The cover can be anything – your favorite cover, a new addition to your collection of which you are particularly proud, or just something that caught your imagination. Please send scans and descriptions to John Bloor, at aerophil59@yahoo.com. The more members who contribute, the more interesting it will be for all of us.

Philatelic Fish Stories

Some of you may have heard the story about the man who loved to fish. Every Saturday he would load his fishing tackle into his car along with the cooler for the fish he expected to catch. He'd drive to the river, set up his rod and reel, and put his line out into the water with a bobber. Then he would settle into his folding chair, read a book, listen to the radio, or just watch the river roll by. At about 5 o'clock he would put everything back into his car and drive home. When he got there, he would take his catch into the kitchen where his wife was preparing supper. She would put the fish into the refrigerator for Sunday dinner.

One Saturday afternoon when the husband was out fishing, a neighbor stopped by. The wife invited her in and they sat at the kitchen table drinking tea. The neighbor rather diffidently said that, the previous Saturday afternoon, she had seen the husband go into a fish market and come out a little later with a package. She asked if the wife knew that some of the fish that they had on Sunday were not caught locally by the husband. The wife smiled and replied that another friend had told her the same story. “I know that you can't catch tuna or mackerel in the river, but the fish is good” the wife said. “Fishing and bringing home fish makes my husband happy; it seems to be good for both of us.” That was the end of the discussion.

If the couple lived in St. Louis, the fish that they ate for Sunday dinner might have come from the A.C.L. Haase & Sons Fish Co. The two covers and a postal card shown here advertised this company and their product. August Carl Ludwis Haase was born on Dec 14, 1828. In 1857 he established a grocery business, the



Fig. 1. Cover sent February 8th, 1896 to Manitow, Colorado. The blue-green corner card of the Haase Fish Company shows a mackerel. Most species of mackerel are readily identified by the vertical stripes on their back. These stripes are thought to help them travel and maintain alignment in schools. They are a salt water fish related to the tuna and bonito and are not likely to be found in the Mississippi River.

Letter to the Editor

Dear Jeff:

I appreciated seeing the covers, in the last issue, with the airmail etiquettes from Mozambique. The printed etiquettes have been listed, however, since the 1966 edition of the Sanabria World Airmail Catalogue.

The etiquettes are listed and priced (in euros) in the *Mundifil* catalogue for the former Portuguese colonies (Selos Postais Colonias Portuguesas). The RMPL has a copy of the 7th edition of this catalogue, published in 2015.

Steve Bonowski

A.C.L. Haase company, in St. Louis, Missouri. When his three sons joined the business, it was renamed the A.C.L. Haase & Sons Fish Co. In the late 1800s, it was one of the largest and best-known fish industries in the country.



Fig. 2. Cover sent August 24th, 1898 to Osborne, Kansas. Osborne is in north-central Kansas and, in 1900, had a population of about 1,000. The species of fish depicted above is not known. Perhaps one of our readers can identify it.



Figs. 3a, & 3b. Postal card (Scott UX18, Figure 3a) sent December 19th, 1904 to Prescott, Arizona acknowledging receipt of a check. The design (Fig. 3b) on the back of the card again depicts a mackerel. The card was addressed to the Bashford Burmister Co., a large mercantile business in Prescott. Why they were paying for fish is unclear. Perhaps they were planning a big party?

To me these covers epitomize local businesses around the end of the 18th century. Today, business envelopes are more brightly colored and complex, but they can't beat the straightforward display of products shown on these three and many other covers from companies over 100 years ago.

Donations

The library thrives on the enthusiasm and generosity of its members. The following people made donations to the library since the last donation listing. These donations were made between February 2, and April 2, 2021. Thank you!

Claussen Living Trust	David King
SCC	Griff Kundahl
George Anema	R.J. Lansing
Gene Barber	Dennis Leczinsky
Donald Beuthel	Alexander Lobkovsky
Susan Black	Ken Luke
John Blanyer	Clark Lyda
John Bloor	Rita McMurty
Stephen Bonowski	Gary McIntyre
John Burke	Dasa Metzler
Lewis Bussey	Jeff Modesitt
Bobby Cash	Charles Morris
Ruth Caswell	Ronda Morton
Lyman R. Caswell	John Palcso
Roger Chicorz	Raymond Quick
John Cool	William Reuter
Kathy Crabbs	Dick Seeley
Joanne Curran	Lauren Seidl
William Douglass, Jr.	Gary Shaver
Richard Earle	Mitchell Slovut
Roe Emery	Morgan Sonsthagen
Erle Fossum	United Postal Stationery Society
Mike Gempeler	
Robert Gibson	Patty Swenson Harms
Eddie Hackstaff	Robert Thompson
Harl Hargett	Jack van Ens
Ron Hill	Tonny van Loij
Gene Holgate	Ravi Vora
Wes Hughes	Elizabeth Wacinski

RMPL Board of Directors Meeting—March 25, 2021

The meeting was called to order at 4:00 p.m. All Board members were present. Guests included RMPL volunteer Calvin Timpe, Librarian Sherri Soraci-Jennings, and Steve Nadler. Outgoing Board members present were John Bloor and Steve McGill.

Introduction

First meeting of the new Board of Directors—Tonny van Loij, President, thanked the outgoing board members for their years of service.

Financial

Bill Douglass presented several detailed financial handouts, including the 2020 budget summary, which delineated 2020 revenues minus expenses resulting in a net income of \$10,415.24. This does not include depreciation, UBS dividends and investment gains. The recent departure of treasurer Tom Heins resulted in a communication breakdown with UBS, impacting the availability of financial data. Bill is currently working on a resolution.

2021 budget will be completed within the next few weeks. Contact Bill directly ASAP, (303-750-8961) for any budget needs (water heaters, computers, etc.)

Various member financial duties announced: Eddie Hackstaff will do data entry in QuickBooks; Tonny will handle deposits; and Bill will continue to write checks, analyze reports and create annual forms such as 1099 and 990 to maintain RMPL 501(c)(3) status.

Bill will re-align departments on the cash register (without changing the most-used register keys) to include items such as out-of-state transactions and donation designation.

A motion was passed that RMPL will: 1) have one credit card kept in the library for miscellaneous purchases, and 2) accept credit cards with a transaction surcharge of no more than 2% to cover costs. Tonny will be responsible for investigating these options.

Operation Manager report

Steve Schweighofer recommended all key volunteers have an assistant who can step in and continue the job in case of absence.

Steve outlined his current job duties and made suggestions for new projects. These include, but are not limited to: black and white printer/copier, matching 5-drawer cabinet files for the vertical files collection, two additional locked case cabinets, annex water

heater, annex roof repair, perimeter building lighting, better snow removal, and faster computers.

Auction catalogs: In collaboration with our librarian, Steve recommended adding a new category of auction catalogs containing only specialty collections. This will be integrated into the existing auction catalog collection in the annex.

Keys: Over the years, library key ownership has been lost and there is no way to know how many keys exist. A motion was passed for Rich Palestro to investigate and report the cost of changing locks on the doors vs. other security options.

New Business

Social Media: A motion was passed that Rod Haenni set up an RMPL Instagram account.

Auctions: Paul Domenici and Gary Withrow reported on the success of the last silent auction. As the number of out-of-state bidders and international buyers increase, offering credit card payment is a desirable option for both security and convenience.

Auction Consignment trial: Gary Withrow talked about the program we will initiate beginning with the October auction. Guidelines for consignment include:

- Members can submit a maximum of 5 lots
- Consigned material will be 10—15% of total lots and must align with auction theme
- Consignee must submit the material description with approval by library
- The minimum bid will be set by the RMPL with input from the consignee
- 25% of hammer price will go to RMPL (with minimum of \$2.50)
- Consignment lots will be anonymous to bidders

Auction Task Force: Steve Nadler, Gary Withrow and Rod Haenni will create an Auction House Directory.

Computer-AV Upgrade: A motion was passed for Tonny to investigate the extent and cost of upgrading RMPL computers and AV equipment in the meeting room.

Open position: Jeff Modesitt has resigned as editor for *Scribblings* and the RMPL auction catalogs. Tonny will spearhead the search for a replacement.

By-laws: A motion was passed assigning Eric Carlson responsibility to review current By-laws and make recommendations for changes.

The meeting adjourned at 6:00 p.m. The next meeting is May 27 at 4:00 p.m.

Regina Domenici, Recording Secretary

What's Up with the Rocky Mountain Stamp Show?

As you've probably already heard, we have postponed the Rocky Mountain Stamp Show (RMSS) again this year. The committee took this action at the January meeting based on the best information available at the time. The decision was primarily based on the fact that we were unable to confirm that our venue was going to be available since they were an overflow hospital facility and would not issue a permit to us. Another big factor for us was enforcement of any public health requirements that may be in effect at the time of the show. None of us were willing to be mask police, and we didn't want to take on the unknown responsibilities surrounding cleaning and/or sanitizing. Everyone is tired of the situation we're in, and for us, keeping our dealer, exhibitor, and collector population safe and healthy is the best way to ensure success for future shows. So, mark your calendars now for the 2022 show scheduled for May 27, 28, & 29.

RMSS President
Ron Lampo

NEW MEMBERS

- ◆ Willis Carpenter, Denver, CO
- ◆ Richard Bruce Carithers, Dracula, GA – Collects Canada, Ireland, France and Colonies, GA Postal History. Isle of Man and Trains
- ◆ Courtney Nichols, Denver, CO
- ◆ Frank Miller, Havre, MT – Collects History
- ◆ Shane Foss, Westminster, CO
- ◆ James Foss, Westminster, CO
- ◆ Joshua Berthiaume, Westminster, CO – US Postage, Russia, Canada
- ◆ Jim Kelley, Parker, CO – Collects inherited U.S. and Russia Collections
- ◆ A.F. Sirag, Aurora, CO
- ◆ Griff Kundahl, Denver, CO – Collects U.S., Worldwide, Select Topicals
- ◆ Charles H. Chaney, Denver, CO – Collects British and French, Empire to Modern, U.S.

For the Record: Next Board Meeting:
Thursday, May 27, 2021
at 4:00 p.m.

Letter From the Editor

To All our Membership:

It is with a very sad heart that I have resigned as editor of *Scribblings*. As of this edition, the position of *Scribblings* editor is open.

Very few endeavors are accomplished alone and that is especially true of publications. I undertook being editor after the death of the incredible Ron Mitchell and the resignation of Mike Milam. Without the supporting cast of many RMPL volunteers, it is likely that I would have lasted about one issue. My thanks to all of you who contributed your time, expertise, and moral support. You made *Scribblings* an award winning publication.

Transitions offer the opportunity to assess systems, stakeholder needs, and stakeholder obligations. Not to be tedious, I have only a few suggestions. The first is a general plea for the membership to be more involved. I understand the 80/20 rule, but because philately is such a broad subject, the few who do get involved can disproportionately influence the content of a publication like *Scribblings*. Because my interests were and are British and Scandinavian, my philatelic friends tended to also share those interests—and the articles found in *Scribblings* were weighted that way. Most were articles that I solicited. So my challenge to the membership is to support the new editor by not waiting for that solicitation. Get busy and write an article or, at least, submit a paragraph about a favorite philatelic item or activity.

My second suggestion regards the many clubs that “headquarter” at the RMPL. *Scribblings* is a great place to get exposure to what your group has to offer. Give members of the Library who aren't familiar with club activities an incentive to experience what you have to offer. Write about it and get that exposure for free!

To any of you who might be interested in undertaking the position of editor, don't be bashful. I am available to answer any questions and to help with the transition.

It has been a fun, educational, personally fulfilling, and sometimes a challenging journey. Chief among my rewards has been the opportunity to meet and work with an incredibly talented and interesting group of people. Many of these people I probably never would have met except through the process of editing and publishing *Scribblings*.

Thanks for the journey!
Jeff Modesitt



Hours: Monday, Tuesday, Wednesday, Friday, Saturday 10 a.m. - 4 p.m.
Thursday 2 - 8 p.m. Closed Sundays and Holidays. Phone: (303) 759-9921

Meeting times and places sometimes change. It is best to call the library or the club to confirm the place and time. A calendar of reserved club times is kept at the library by the Operations Manager, Steve Schweighofer. Clubs should check the calendar regularly and notify Steve of any changes or updates at steve.schweighofer@comcast.net. All requests to reserve meeting time and space for philatelically related meetings other than those listed here must be approved and scheduled with Steve well in advance.

****** May 2021 ******

- May 1 Sat**-Meeting 10 AM
Scandinavian Collectors Club
- May 1 Sat**-Meeting 1 PM
TOpical Philatelists In Colorado (TOPIC)
- May 5 Wed**-No Meeting
Aurora Stamp Club
- Second Saturday at the RMPL**
May 8 - 9 AM
Presenter: Steve Nadler
An Interactive Discussion about Postcard and Postal Card Postal History Using "Show and Tell" Scans
- May 8 Sat**-Meeting 10 AM
Mexico/Latin America Club
- May 9 Sun**-Meeting 1 PM
Denver Postcard Club
- May 12 Wed**-Meeting 7 PM
Denver Germany Stamp Club
- May 13 Thu**-Meeting 2 PM
Cherrellyn Stamp Club - call to verify
- May 15 Sat**-Meeting 9:30 AM
Metro Denver Young Stamp Collectors' Club
- May 16 Sun**-Meeting 1 PM (email will confirm)
Great Britain and Commonwealth Collectors Club
- May 17-20 Mon-Thu**-RMPL live auction viewing of lots, normal library hours
- May 21-22 Fri-Sat**-RMPL live auction, 9:30 AM - Noon, 1:00- 3:30 PM both days
- May 26 Wed**-Meeting 11 AM
Denver Stamp Club
- May 27 Thu**-Meeting 4 PM
RMPL Board Meeting, open to all
- May 29 Sat**-Meeting 1 PM
Colorado Postal History Society

****** June 2021 ******

- Jun 2 Wed**-No Meeting
Aurora Stamp Club
- Jun 5 Sat**-Meeting 10 AM
Scandinavian Collectors Club
- Jun 5 Sat**-Meeting 1 PM
TOpical Philatelists In Colorado (TOPIC)
- Jun 9 Wed**-Meeting 7 PM
Denver Germany Stamp Club
- Jun 10 Thu**-Meeting 2 PM
Cherrellyn Stamp Club
- Second Saturday at the RMPL**
Jun 12 - 9 AM
Presenter: Ravi Vora
19th Century: U.S.-India History via Philately
- Jun 12 Sat**-Meeting 10 AM
Mexico/Latin America Club
- Jun 12 Sat**-Meeting 11:30 AM
Rocky Mountain Aero and Aerophilately Club
- Jun 13 Sun**-Meeting 1 PM
Denver Postcard Club
- Jun 19 Sat**-Meeting 9:30 a.m
Metro Denver Young Stamp Collectors' Club
- Jun 20 Sun**-Meeting 1 PM
Great Britain & Commonwealth Collectors Club
- Jun 23 Wed**-Meeting 11 AM
Denver Stamp Club

**Please verify all meeting dates
and times with club officers!**

**Second Saturday
presentations have resumed!**