

# Scribblings

...from the Rocky Mountain Philatelic Library



Sherri Soraci-Jennings, Librarian

Vol. 29 - No. 1  
www.rmpldenver.org

2038 South Pontiac Way, Denver, CO 80224-2412  
(303) 759-9921

Jan / Feb 2021  
Email - rmpl@qwestoffice.net

## IN THIS ISSUE

**Letter Sheet or Letter Card?**  
by Wayne Menuz..... 1

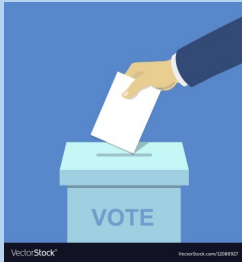


**President's Message**  
by Tony Van Loij..... 2

**Second Saturday Programs**  
none scheduled ..... 2

**RMPL Elections**..... 5

**RMPL Election Process**... 5



**Candidate Information** .... 6

**New on the Shelves** ..... 9

**Covering the World**  
by Jeff Modesitt and  
John Bloor..... 11

**Dalene and Blaine Thomas**  
by John H. Bloor..... 13



**RMPL Board of Directors Meeting**..... 14

**Donations** ..... 15

**New Members** ..... 15

**Activities Calendar**..... 16

## Letter Sheet or Letter Card?

By Wayne Menuz

The following article was originally published in "Postal Stationery" (Vol.56 No.6, #399, Nov.-Dec. 2014), the journal of the United Postal Stationery Society, Inc. (UPSS), and is reproduced with permission. The UPSS is the largest worldwide society for the study and collecting of worldwide postal stationery. Information is available at [www.upss.org](http://www.upss.org), or contact [upss-ed@pacbell.net](mailto:upss-ed@pacbell.net).

The Grant "Letter Sheet Envelope" shown in Figure 1 may raise the question whether this might be better described as a "letter card." In the USA Postmasters' reports, they are termed letter sheet envelopes, and those words are printed on the issued items. Yet, no one uses those three words to describe them.

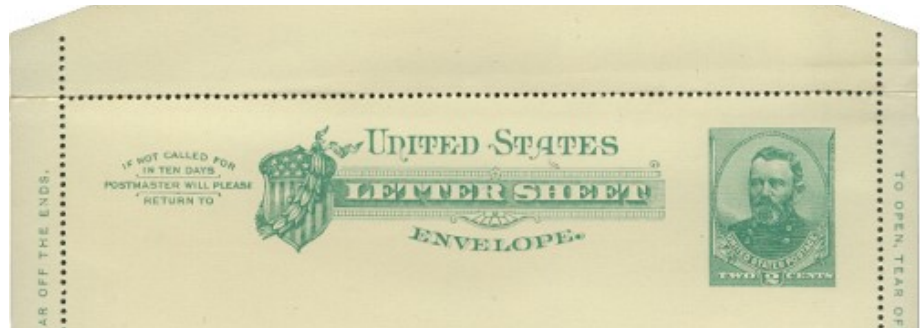


Fig. 1. This is a Letter Sheet Envelope according to U.S. Postmasters, but to philatelists this is likely a letter card.

Philately often has specific terminology for describing a subject that differs from a term used by an issuing post office. For example, Great Britain used "label" to describe the penny black and subsequent adhesives for many years (Fig. 2). Regardless, no philatelist would call a penny black a "label." We describe such products as (adhesive) stamps, as does the general public today.

Likewise, no catalog today refers to "cement" on the back of stamps, though that is the word used (Fig. 3) by the British post office for the gum



Fig. 2. "PRICE 1<sup>d</sup> Per Label. 1/- Per Row"  
(Price one penny per stamp.  
One shilling per row)



Fig. 3. "In Wetting the Back be careful not to remove the Cement"

(Continued on page 3)

# Scribblings

Newsletter of the  
**Rocky Mountain Philatelic Library**

2038 So. Pontiac Way  
 Denver, CO 80224  
 Phone: (303) 759-9921  
 email: [rmpl@qwestoffice.net](mailto:rmpl@qwestoffice.net)  
 Hours: 10 a.m. to 4 p.m. daily,  
 Thursday, 2 p.m. to 8 p.m.  
 Closed Sundays & Holidays

## Editor

Jeff Modesitt ([jeffmcolorado@gmail.com](mailto:jeffmcolorado@gmail.com))

## Copy Editors / Proofreaders

John Bloor  
 Paul Domenici, Roger Rydberg,  
 Steve Schweighofer

## Librarian

Sherri Soraci-Jennings

*Scribblings* is published bimonthly by the Rocky Mountain Philatelic Library. The RMPL is a chartered Colorado nonprofit corporation and is an IRS-designated 501(c)(3) charitable organization. Membership subscriptions over that for the contributing membership, and donations of appropriate philatelic materials, may be deductible for US income tax purposes. The Library is a volunteer organization. Financial donations, philatelic books, stamps, supplies and donations of your time are welcome.

A basic membership with the RMPL is \$25 per year and includes checkout privileges and six issues of *Scribblings*. Call for more information.

Knowledge is better when shared. Consider writing an article for *Scribblings* about your favorite philatelic topic.

President..... Tonny Van Loij  
 Operations Manager..... Dasa Metzler  
 Vice President ..... Jim Kilbane  
 Corresponding Secretary ..... Bill Plachte  
 Recording Secretary ..... Paul Lee  
 Treasurer .....

Directors: John Bloor, Steve McGill,  
 Rich Palestro  
 Ex-officio member: Don Dhonau

Officers and Directors may be contacted  
 through the RMPL.

Web page — [www.rmpldenver.org](http://www.rmpldenver.org)

## President's Message

By the time you receive this 1<sup>st</sup> edition of the 2021 *Scribblings* a very trying and complicated year is behind us. I do hope that 2021 will be much improved so that we can return to some normality. Let me be the first one to wish you all good Health and Prosperity for the New Year. Hope you had a good time during the Holidays.



Thanks to Paul Domenici, Gary Withrow and many other volunteers we had a successful online auction. Many thanks to the bidders, all lots were sold, because, besides dues, this has been our primary source of income.

Paul and his staff are ready for the Country Lots and Large Lots and Cover Lot joint auction in February. Depending on the COVID19 situation it will be live at 2048 South Pontiac Way (mailed or emailed bid sheets acceptable). I do hope that you will all participate in the February auction.

With this edition you will also receive an election ballot with special envelope. Please vote and send in asap. We have some members that are running again, but all positions can be voted on—even the position of President, SO VOTE. Your vote is critical since five positions will become vacant. All candidates but incumbents are profiled in this edition of *Scribblings*.

The list of sad notices keeps on growing this year, as you will see in the tribute to Dalene Thomas and her beloved husband Blaine. These deaths were followed soon after by long time dealer Pat Dowling, Jack German, and long time Board member David Weisberg.

I hope you all stay safe and healthy because the library still will need your help as it recovers from the effects of the lockdowns and related issues.

Please note the announcements below!

Tonny

## OCTOBER 2020 SILENT AUCTION RECAP

The October 2020 silent auction was the RMPL's first virtual auction. Winning bids totaled \$13,032, and after deducting expenses (printing, supplies, advertising), the net total made for the library was \$11,267. Thanks to all who submitted bids!

## Second Saturday Presentations on HOLD until Further Notice

Due to the uncertainty as to whether the RMPL will be allowed to host presentations and the frustration this can cause our presenters, there will be no gatherings until March, at the earliest.

(Continued from page 1)

on their stamps. There are many similar examples of postal documents, announcements, and issued products that use terminology not used by philately, but replaced with a generally accepted word or term.

Such is the case with the Grant issue. At the time, there were two general classes of mail for sending messages: letters and post cards. The former usually utilized envelopes and thus were private, while the latter used simple card stock with the message open to view on the back, and thus not private.

The use of envelopes was virtually unknown prior to the postal revolution in Great Britain effective January 1, 1840, because postage, worldwide, was calculated based on the number of sheets of paper, and an envelope was one piece of paper, thus doubling a one-page letter's postage fee. Instead, a sheet of paper that contained the message on one side was folded several times, closed with a wax seal, creating what collectors term a "letter sheet". The Rowland Hill 1840 reform based the postage on weight rather than the number of sheets of paper, and the convenience of an envelope soon became the norm.

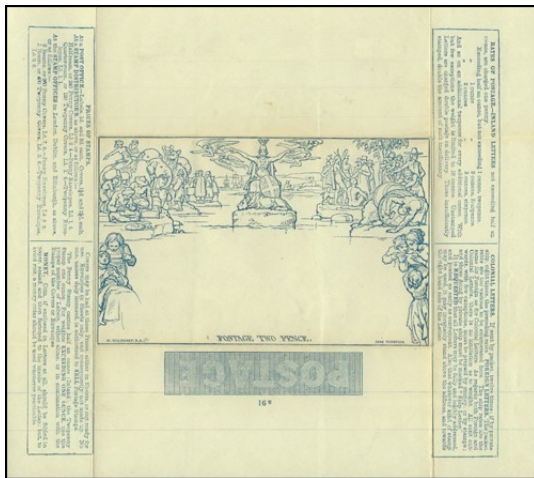


Fig. 4. In addition to the letter sheet seen here, the "Mulready" is also found in envelope form.

The postal stationery designed by W. Mulready and issued by Great Britain on May 4, 1840, concurrently with the penny black adhesive stamp (Fig. 4), included both envelopes and letter sheets. Above is shown an unfolded letter sheet. The public was expected to fold it down to the border of the design, and apply their own sealing wax for its closure. To open it, a recipient had to slit an edge, or melt the wax seal. Later, the letter sheet design evolved to have one side cut into a flap with gum, and became easier to use, though to open one, the flap had to be slit.

Letter sheets declined from almost 100% of letter mail prior to 1840, to almost zero because of the utility of envelopes. Some were issued by post offices, including USA's 3¢ pink Washington of the 1860's, U36 UPSS 82 and 83, and again starting in 2004,

U653-U673 UPSS LS1-11. They were poorly accepted by the public and were seldom issued after the 19<sup>th</sup> century by any country. However, because of the need during and after WW II to keep the weight of airmail letters as low as possible, the airmail letter sheet, since it obviated the need for more than one piece of paper, became so popular with post offices that their use was encouraged by having a postage rate lower than the airmail letter rate. The public's acceptance was so great these sheets were given a special name by the UPU, the aerogramme, and that word (aerogram in English) is now also used by philatelists.

The first post card was issued by Austria in 1869. The key to its enormous success was the reduced postage compared to a letter (typically, half). One drawback, however, is that the message written on a post card is not private.

The next step was to create an item of postal stationery for short messages that provided the convenience of not needing an envelope (like the letter sheet), maintained the privacy of the contents, and was simple for the public to use and the post office to handle. Belgium was the first country, on December 15, 1882, to issue what essentially was a reply card with only the front printed with an indicium (Fig. 5). The edges were perforated and gummed. The user wrote his message, then folded and sealed the letter card. The recipient tore off the selvage on three sides to open it. They were christened "CARTE-

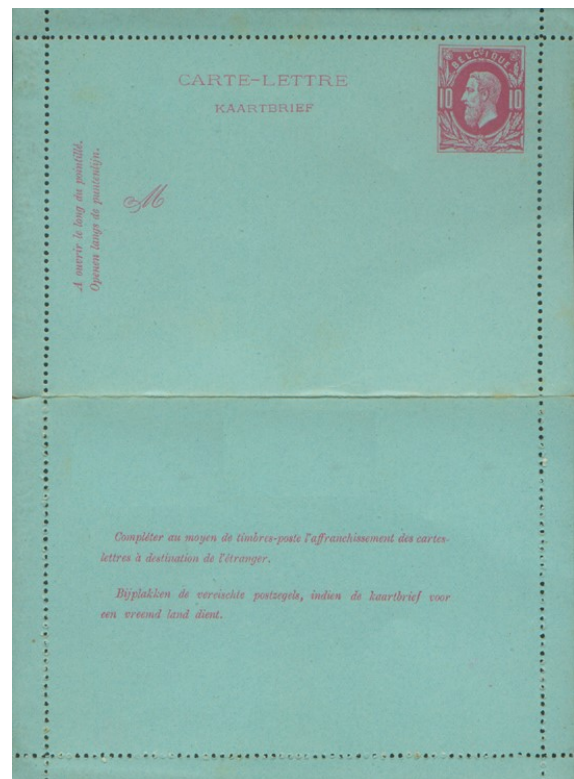


Fig. 5. The first letter card was issued by Belgium on December 15, 1882

LETTRE” (French) and KARTENBRIEF” (German), both translated as “Letter Card” in English. The words became the philatelic descriptor for postal stationery that had one or more edges that were perforated or rouletted and that were torn away upon opening.

Letter cards were subsequently offered by many countries in the 19<sup>th</sup> century. The paper of post cards was thick card stock, and letter cards were initially made with the same thick paper and were generally twice the size of the contemporary post cards and folded in half. Over the years, many formats were tried, including some with flaps and cut-out side edges.

There are many perforation patterns (Fig. 6), and the 1914 Gebruder Senf postal stationery catalog devised a handy chart that was subsequently copied by the 1928 Asher and the 1970’s Higgins and Gage catalogs. The Belgium letter card is type AA. The perforation (or occasionally, the rouletting) was initially provided because card stock was too thick to slit. However, post offices soon discovered the paper could be thinner than post cards because, in use, the letter cards were really two pieces of paper glued together, and thin paper provided sufficient rigidity. Later letter cards are often on paper no thicker than envelope paper.

Letter cards with top flaps, and letter sheets with top flaps, can resemble each other. By universal philatelic custom, a letter sheet, however, never has a perforated or rouletted selvage, while a letter card always does.

The distinguishing features of letter sheets and letter cards are:

**Letter sheet:** A single sheet of paper that is folded down to a prescribed size and requires one or more edges to be slit for it to be opened by the recipient.

**Letter card:** A paper or card stock that is folded (usually in half, and usually to post card size) and provided with one or more perforated or rouletted edges that are torn away for opening.

Therefore, the USA’s Grant issue is, by definition, a letter card with peroration type F in the standard chart, and for good measure, has a fold-in tab at bottom for extra writing space (Fig. 7). It is neither a letter sheet, nor an envelope, though both are printed on it.

The stock is not as thick as the contemporary post cards, but the item clearly was not intended to be slit for opening, and thus is a letter card. But, the US POD not only called it a “letter sheet envelope,” but

also had that term printed on the front.

This confusing state of affairs is caused by the Scott listing of USA postal stationery “envelopes.” It is actually a simple cut square listing, as it makes almost no differentiation of the “stationery”, just the indicium. It does use a prefix “W” for wrappers, but only because they initially had horizontal/vertical laid lines rather than diagonal ones found on envelopes, and so a cut square could be differentiated. They run into trouble when wove paper replaced laid. For example U424 and W425 have the same die on the same paper, so cannot be differentiated if cut square. The same is true for U426 and W427, and many others. Since the Scott listings are only based on the indicia, its envelope listings actually contain letter sheets, letter cards, aerograms, and wrappers, all intermixed.

Catalogs and collectors worldwide moved away from a cut square listing a century ago, and Scott is the only catalog still listing them. This, of course, encourages production of albums and collectors of cut squares. Another factor in the USA cut square hold-out is that many USA envelopes are much rarer mint than specimen, and cutting out the indicium from a specimen entire can often create a pricy mint cut square. For most of the world, a cut square is simply a mutilated item of stationery.

Regardless of Scott, the UPSS should at least use, and encourage the use of the proper philatelic terms for the various types of postal stationery.

The letter sheet, the letter card and now the aerogram are today seldom used or no longer offered by most countries, primarily because they usually offer no reduction in the postage rate and it is generally more convenient to use an envelope. As post card rates approach letter rates, they too are declining in use, especially with commercial bulk rates and increasing costs for the card’s paper which in the USA and other countries, used to be free.

In summary, the terms letter sheet and letter card define what an item of postal stationery physically is, rather than what a post office or a catalog calls it or, even, what is printed on it – just like the word “label” printed on the penny black sheet of stamps.

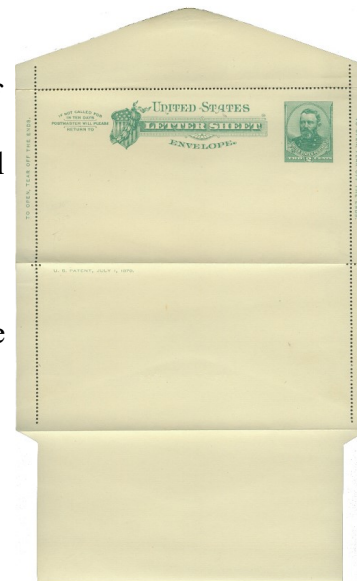


Fig. 7. The Grant issue is, by definition, a letter card with peroration type F.

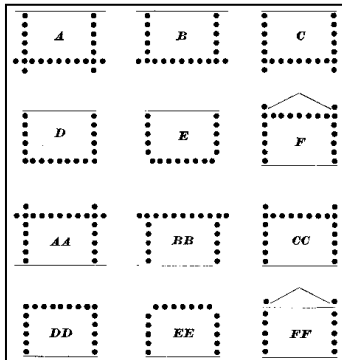


Fig. 6. Perforation patterns

# RMPL ELECTIONS

## Candidates for 2021 Election

Candidate

Position

### OFFICERS AND OPERATIONS (unopposed)

Tonny van Loij	President
Jim Kilbane	Vice President
Paul Domenici	Corresponding Secretary
Regina Domenici	Recording Secretary
Steve Schweighofer	Operations Manager

### DIRECTORS (vote for four of the seven candidates)

Richard Aspnes	Board Member
Steve Bonowski	Board Member
Eric Carlson	Board Member
Rod Haenni	Board Member
Andy Murin	Board Member
Rich Palestro	Board Member
Gary Withrow	Board Member

#### NOTES

- ◆ Treasurer position is appointed by the President and becomes a member of the Board.
- ◆ There is a newly appointed position titled “Donations Coordinator.” Appointment to this position is made by the Operations Manager. Dasa Metzler will fill this position.

## RMPL ELECTION PROCESS

A separate ballot has been included with this copy of *Scribblings*. **Ballots are due by January 31, 2021** for all five Officers (President, Vice President, Corresponding Secretary, Recording Secretary, and Operations Manager) and four members of the Board of Directors. There are no officer positions this election that are opposed, but please show your support by casting your vote.

Ballots can be either mailed to the RMPL Library, 2038 South Pontiac Way, Denver, CO 80224-2412, or deposited in the Ballot box located at the Library’s front desk. Results will be announced February 8th by the Election Committee.

The Election Committee coordinating the election includes Gene Holgate, Steve Nadler and Alex Papp. Anyone with questions or comments should contact any member of the Election Committee. Their contact information is:

Gene Holgate: phone – 720 470 7000 email – [nettigene43@comcast.net](mailto:nettigene43@comcast.net).  
 Steve Nadler: phone – 303 322 3624 email – [schlomox@msn.com](mailto:schlomox@msn.com).  
 Alex Papp: phone – 720 639 0039 email – [apapp5@comcast.net](mailto:apapp5@comcast.net).

# CANDIDATE INFORMATION

## **PRESIDENT**

**Tonny van Loij**

## **VICE PRESIDENT**

**Jim Kilbane**

Because these two individuals are incumbents and running unopposed, as well as space consideration, no candidate information is being included. This information is included in the Jan / Feb 2018 *Scribblings*.

## **CORRESPONDING SECRETARY**

**Paul Domenici**

My name is Paul Domenici and I am interested in the Board Position of Corresponding Secretary. I retired about 2-1/2 years ago and moved to Colorado in May of 2018 to be close to my daughter and grandchildren. After getting settled, I joined the R.M.P.L. in June. I have been a front-desk volunteer and stamp sorter during my entire time here, and I have also become involved in the R.M.P.L. auctions and surplus book sales.

I am a long-time member of the following organizations: the American Philatelic Society, the American Topical Association, the Pitcairn Island Study Group and the Precancel Stamp Society. I am primarily a worldwide collector, but my two real interests are United States bureau precancels and the philately and ephemera of Pitcairn Island.



## **RECORDING SECRETARY**

**Regina Domenici**

My name is Regina Domenici and I am interested in the Board Position of Recording Secretary. I moved to Colorado in May of 2018 to be close to my daughter and grandchildren.

I work remotely as a nurse educator and manager of clinical services for Davita dialysis clinics in CA and NV.

After 45 years of living with a stamp collector, I've seen the light and finally converted to pursuing my own stamp interests. I joined RMPL a year ago and I love the live auctions. I'm a novice at philately, but I have started to collect birds of North and South America.

I look forward to serving the RMPL community.



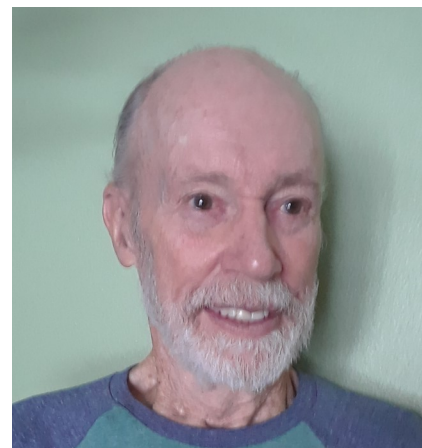
## **OPERATIONS MANAGER**

**Steve Schweighofer**

I am retired from the U. S. Air Force, as well as the U. S. Postal Service. My interest in stamp collecting dates from the mid-1950s and my RMPL membership since its founding.

My activities at the RMPL include serving on the Board, regular front desk duty, stamp sorter, manager of the auction catalogs collection, organizer and maintainer of the stamp show catalogs collection, the maps collection, the overage periodicals collections, the overage stamps catalogs collections, and the sales book shelves. I also have served as a proof reader for *Scribblings* for the last four years.

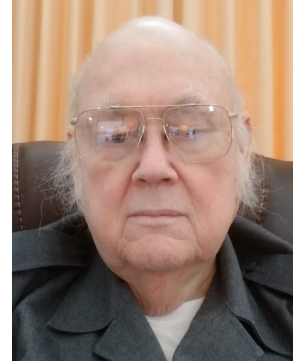
I have assisted others with buildings, grounds, computers maintenance—general fixer of anything in need. I get things done!



## BOARD OF DIRECTORS (Vote for four of the seven candidates)

### Richard K. Aspnes:

Member of the American Philatelic Society (APS) and APS Expertizing Committee (for Indo-China), as well as several other domestic and international philatelic specialist societies. President of the Society of Indo-China Philatelists. Richard specializes in the philately of East and South Asia; and participates in the RMPL's lecture series "History of the World through Stamps" and has presented several lectures at the RMPL. He edits and publishes an electronic catalog "Commemorative Postal Markings of French Indo-China, Viet-Nam, Cambodia, Laos through 1975/76" awarded an APS Literature Silver award at Stamp Show 2003. Richard retired from The Boeing Company in 2011 after a fifty-year world-wide career in computer and information technology starting at the beginning of the computer revolution.



### Steve Bonowski:

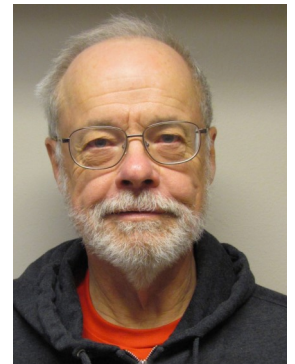
Rocky Mountain Philatelic Library member since August, 2010; American Philatelic Society member since February, 1974 (life member); International Society for Portuguese Philately member since 1991; Mexico Elmhurst Philatelic Society International member since 2012; Others: American Philatelic Research Library, Polonus Poland Philatelic Society, Western Philatelic Library, British North American Philatelic Society.

Collecting interests: Primary: Portugal & Colonies, Mexico, Poland. Secondary: US, British Commonwealth, St. Pierre/Miquelon, German speaking countries, several additional select countries in Latin America & Eastern Europe

Experience on non-profit boards of directors (selected): Colorado Mountain Club, board member for 11 years between January, 1992 and December, 2008. Provided management oversight, fundraising, capital campaign for American Mountaineering Center in Golden. I have led Club trips since June, 1986 in Colorado, Utah, Arizona, New Zealand, Australia, Africa, South America, Europe, Asia. Last foreign trip lead was in 2014. Experienced in logistics, team building, group dynamics.

Colorado Mountain Club Foundation board member from 2013 through 2021 (still serving). Board secretary for four years. CMCF manages the Club's endowment and other monies. Provides annual events for donors (pre-pandemic).

A founder of Colorado Fourteeners Initiative in 1994 (trail stewardship that builds and maintains trails on Colorado's 14,000' peaks). Board service 1994-2002, 2005-2008. Board members dealt with budgeting, oversight of executive director, fundraising, relationships with federal land managers. I would like to utilize these acquired skills in support of the Library.



### Eric Carlson:

I was born in a small town in NW Pennsylvania (Warren) known for deer hunting and fishing. I did neither. When I left Warren for college, I was fairly sure I did not want to return. I found my true love at college (Marge Green) and she agreed to change her name and we were married in 1963.

I enlisted in the Air Force after college and went to San Antonio (Lackland AFB), survived a Lithuanian training officer, and entered life as a Second Lieutenant. They sent me to Amarillo for Supply School as my eyes were not good enough to fly. Two years in Del Rio Texas, one year remote in Thailand and a year plus in Colorado Springs was enough.

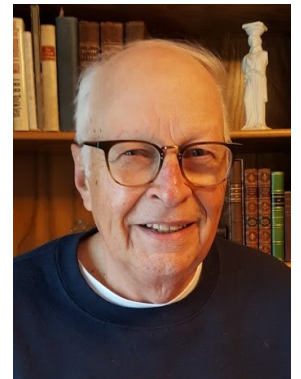
I got into the health care administration field in Dallas Texas and after a couple years we decided it was too HOT there. We returned to Colorado and I worked for several BlueCross and Blue Shield organizations.

My stamp collecting started like many as a kid with hiatuses as a teen, college student. I joined the Cherrilyn Stamp Club in the 1980s and am currently president for life it seems. I became interested in the RMPL in the '90s and I also became a dealer buying Pat and Earl Timm's business.

I am an eclectic collector with a focus on early Scandinavian issues and a novice Machin collector.

My other interests are golf, reading (mostly adventure and mysteries) spiced with a biography periodically. The COVID chaos has also driven me to jigsaw puzzles.

At the Library I volunteer at the front desk on Friday afternoons and assist Dasa with the stamp program. I believe the Library is a vibrant part of the stamp collecting fabric and want to see it continue to flourish. Many have contributed to its status of today and I want to do my part to honor their efforts.

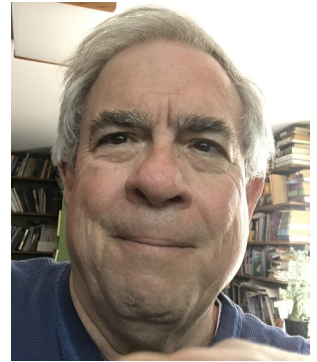


## **Rod Haenni:**

My philatelic life started at age 5 when I began collecting stamps torn from envelopes received at my father's business. I collected United States, Great Britain, France and Australia into college and then got interested in Guatemala. For the past 20 or so years, I've been an enthusiastic collector of Zeppelin, Hawaii and Guatemala postal history, as well as cacti and other succulents on post cards. I have been a member of the APS since 1978 and a member and board member of the International Society of Guatemala Collectors for several years.

I worked as a geologist in uranium and lead-zinc-silver mineral exploration throughout the U.S. I then sold books and databases to libraries of all types, sold library automation systems to academic and public libraries and capped my working days by owning my own stamp and coin business, Arapahoe Coin & Stamp, in Littleton. I thoroughly enjoyed working with collectors at all levels.

I have been a member of the Rocky Mountain Philatelic Library for many years and am honored to be considered as a candidate for the board of directors. There is some evidence that interest in stamp collecting among people under 40 is increasing; perhaps the large number of world travelers in that age group has helped increase awareness of philately. In any event, I believe the best days of the RMPL are still to come and my contributions in making presentations, evaluating donations and helping to oversee financial matters that come before the board will allow me to be of service to the RMPL.



## **Andy Murin:**

I started collecting stamps when I was about 10 years old. Gradually migrated to U.S. prior to 1940 along with Colorado Postal History. I have been a member of the RMPL for 15 years along with being a volunteer. I am past president of the Dawsonville Stamp Club and Past President of the Colorado Postal History Society. My goal is to increase volunteering among members.



## **Rich Palestro:**

I have been a library member and volunteer for 15 years. I have been collecting stamps since I was eleven years old. I have served on the board for three years. I currently volunteer two days a week assisting Dasa with donation sorting. In the past I have handled the maintenance issues for the library.

As a board member, I believe I bring an understanding of the issues that face the library's future.



## **Gary Withrow:**

I retired March 2019 as a Senior Project Manager working on healthcare related software applications. I started collecting stamps in 1959. My parents bought me some approvals and I was given my father's stamp album. I started collecting worldwide, then I focused on the US while in the service.

I currently collect worldwide prior to 1950. I have focused on Switzerland and it is the only country for which I collect new issues. I am also interested in Latin America as well as any airmail related stamps or covers. I also collect anything that strikes my fancy.

I am currently working on a study of worldwide air mail specific envelopes. I started this effort when I retired to have something to focus my attention on.

Currently I manage the RMPL Auction web site, as well as work to reconcile the auction winners after the auction closes. I also volunteer to work the front desk. I am a member of the American Helvetia Philatelic Society and I mail their bi-monthly newsletter. I am also a member of the Latin America Study Group as well as the Rocky Mountain Aero and Astro Philately Club.





# NEW ON THE SHELVES

## UNITED STATES

*Catalogue of U.S. Space Covers*, published by the American Space Cover Society

## ASIA

*Catalog of Postage Stamps of the USSR 1918-1980*, Vol. 1 [in Russian]

*China: Junks, Reapers, Temples*

*China Postal Markings*

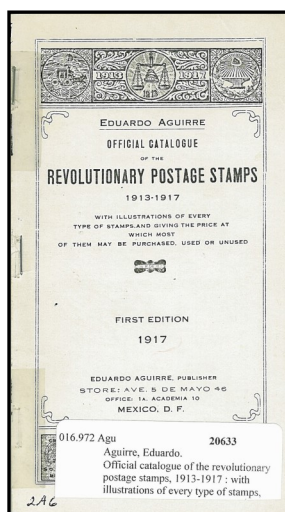
*China, Taiwan, Asia Commemorative Postal Markings*

*Japanese Postage Stamp Catalogue* (1971, 1972, and 1985), published by the Japan Stamp Dealers' Association

## COLORADO

*Colorado County Name Cancels*, by Donald G. Beuthel

*Colorado Manuscript Cancels*, by Donald G. Beuthel



*Colorado Postmaster Name Cancels*, by Donald G. Beuthel

*The Post Offices of Colorado by County: 1859-1969*

## EUROPE

*Alsace-Lorraine 1925-1948: A Near Quarter-Century of Peace, War and Peace*, by Stanley J. Luft

*Catalogue Study of Special Commemorative Cancellations of Greece 1969-1980* [in Greek], by Nikos Bergiopoulos

*Deutsche Schiffspost Nach 1945*, by Friedrich Steinmeyer and Heinz Evers

*France: the 15 Centimes Sages of 1876-1901: A*

*Monographic Study of the Stamps and Stationery Printings*, by Stanley J. Luft

*French Forces Abroad*, by Alfred J. Kugel

*Geschichte der Pharmasie in Philatelistischer Sicht* [History of Pharmacy in Philatelic View], by S. Gutmann und W. Maiwald

*Geschichte der Preussischen Post: von ihrem Ursprunge bis auf die gegenwart* [History of the Prussian Post ...], by Heinrich Stephan

*“Hors-Sac” – Urgent Dispatch Mail*, by Stanley J. Luft

*Luxembourg Pre-Philatelic Material (1680-1851)*, published by the Luxembourg Philatelic Study Club

*Michel Werbemarken-Katalog 1978: Katalog der Nichtfrankaturgültigen Ausgaben zu Philatelistischen*

*Les Millésimes des Timbre-Poste de France Émis Depuis Decembre 1900*, by Vinck de Winnezele

*Les Oblitérations des Nouveaux Départments d'Algérie 1959-1962*, by Henri Lordet

*France: Marianne de Décaris (1960-1968)*, by Stanley J. Luft

*Officiele Belgische Postzegelcatalogus: Volume 2*, published by Belgische Beroepskaer van Postzelhandelaars

*Paris Postal Markings 1863-1876: The Second Star Cancellation Period*, by Stanley J. Luft

*The Philately of French Expositions, 1855-1949*, by Stanley J. Luft



**Prinet "Belgique":** Catalogue Illustré avec les Prix Absolument nets Auxquels en Procurer les Timbres de Belgique

**Rixheim in the 19th Century**, by Stanley J. Luft



**Shipboard Postal Markings of the 20th Century French Navy**, by Stanley J. Luft

**Stamps of Poland**

**Stempel Katalog: Ehemalige Deutsche Kolonien und Auslandspostämter** [in German]

**Ungarische Vorausentwertungen: 1900-1914**

[**Hungarian Precancels: 1900-1914**], by Otto F. Schäffling and Wilhelm St. Schäffling

**Die Zähnungs-Kontrollstempel, der Postdirektion Zagreb** [Perforation Control Stamps of the Zagreb Post] Heft 1 [in German], by Helmut Kobelbauer

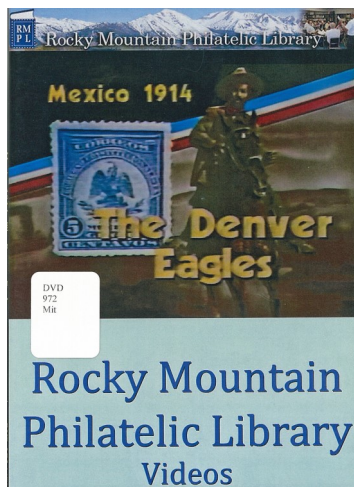
## NORTH AMERICA

**Catalogue of the Stamps, Envelopes, Wrappers and Postal Cards of Mexico**, by Henry Collin and Henry L. Balman

**Mexico 1914: The Denver Eagles**, by William R. (Ron) Mitchell

**Official Catalogue of the Revolutionary Postage Stamps [of Mexico], 1913-1917**, by Eduardo Aguirre

**This is MEPSI**, produced by the Mexico Elmhurst Philatelic Society and the Rocky Mountain Philatelic Library



## SOUTH AMERICA

**The Revenue Stamps of Peru: Volumes I and II**, by Herbert H. Moll

## TOPICAL

**The American Music Stamp Festival** [on CD], Published by the US Postal Service

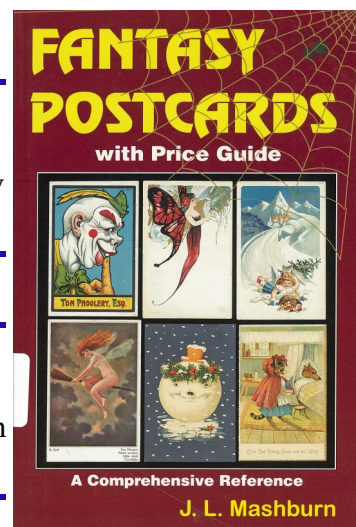
**The Philatelic Herbalist**, by Tom King

**Speciale Postzegel Catalogus: Paddestoelen** [Special Stamp Catalogue: Mushrooms], by Louis J. Goiris

## POSTCARDS

**Fantasy Postcards with Price Guide: A Comprehensive Reference**, by Joseph Lee Mashburn

**The Postcard Price Guide: A Comprehensive Reference**, by Joseph Lee Mashburn



## MISCELLANEOUS

**Collectors Catalogue of Stamps of Europe from 1940**, 1st Edition (1949)

**Katalog der Weihnachtssiegelmarken** [Catalogue of Christmas Seal Stamps]

**The Philatelic Catalog of Postal Stamps, Envelopes, Wrappers and Cards up to 1890**, by Edward B. Evans

**Relics of the Space Race: A Reference Book**, by Russell Still

**The Video Guide to Stamp Collecting** [on CD], starring Gary Burghoff

**Wir Sammeln Briefmarken** [We Collect Stamps], by Heinz Kuhne

**Word Ends**, by Frank W. Campbell

(Continued on page 12)

# COVERING THE WORLD

Interesting covers from around the world

By Jeff Modesitt and John Bloor

This is the second in a new series of columns in *Scribblings* titled “Covering the World”. The idea was suggested by our editor, Jeff Modesitt. Each issue will have one or two pages displaying one to four covers that we hope our members find especially interesting or attractive. All of our members are asked to contribute scans of covers along with brief (less than 100 words, although I’m flexible) information about the cover and why you like it. The cover can be anything – your favorite cover, a new addition to your collection of which you are particularly proud, or just something that caught your imagination. I will be in charge of assembling the column so please send scans and descriptions to me, John Bloor, at [aerophi59@yahoo.com](mailto:aerophi59@yahoo.com). The more members who contribute, the more interesting it will be for all of us.

**Cover #1:** Advertising cover printed by the Puerto Rico-Institute of Tourism, franked with a set of the second semi-official airmail stamps issued by Aerovias Nacionales Puerto Rico, Inc. (ANPRI). This set of eight stamps was intended for use on packages carried by ANPRI. The 10¢ map airmail stamp pays the airmail fee from San Juan, Puerto Rico to New York. This is a first flight cover dated March 23, 1941. The addressee, Fred W. Kessler, was a stamp dealer in New York who specialized in aerophilately.

ANPRI was started in 1936 by the Basso brothers with a hydroplane that they had purchased. The



aircraft was named the Kofresi after Roberto Cofresi, a famous pirate. Although the airline was able to get airmail contracts, they went out of business in 1941, in part due to competition from Powelson Airlines.

**Cover #2:** A classic Mourning cover bearing the Great Britain “Unified Series” surface printed 5d dull green stamp covering the one ounce rate to foreign destinations. Sent November 26, 1884 from Corwen, Wales, the letter arrived in New York December 7, 1884.

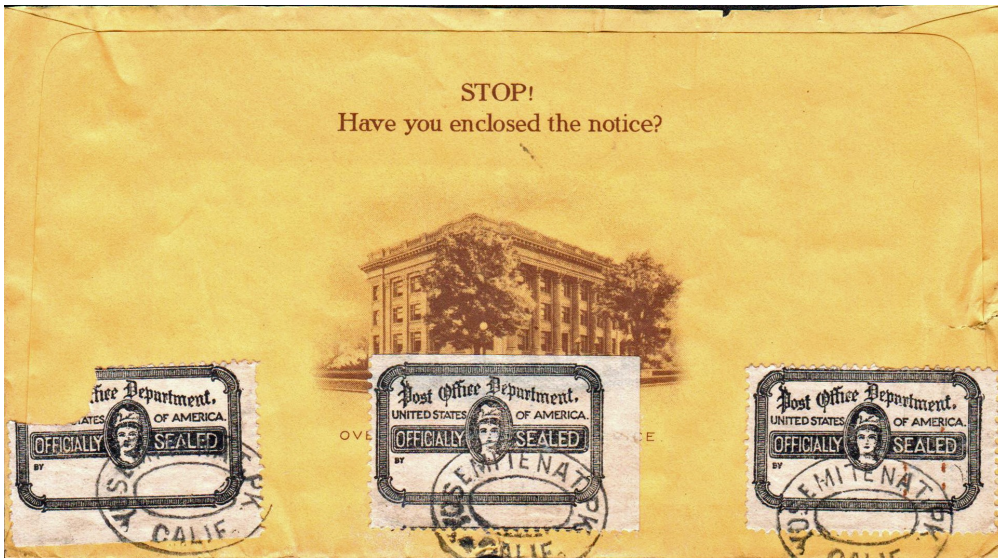
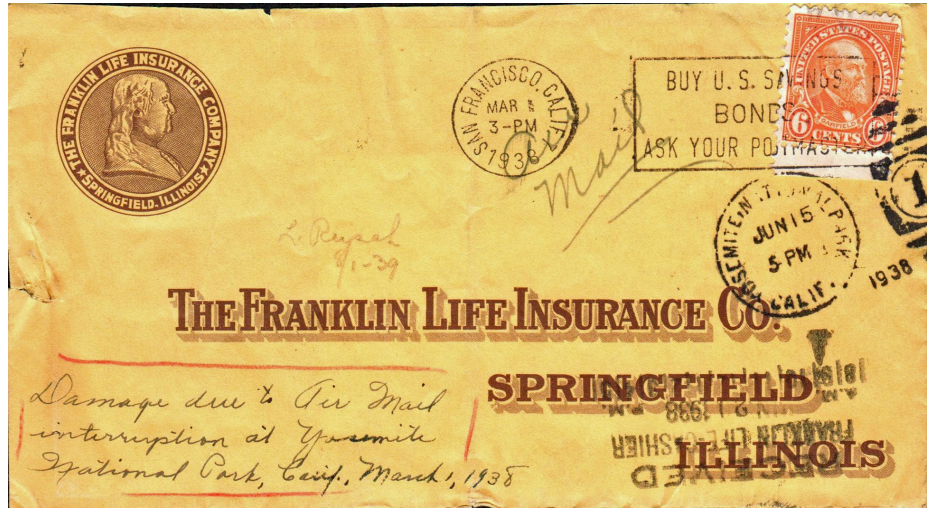
The issuance of this set in 1883/84 met with immediate protests from postal workers. Not only was there criticism about the designs, but the muted colors caused difficulties in determining if the correct postage had been applied. The 4d, 5d, 6d, and 9d were all dull green! A stamp committee was convened to assess the situation and quickly advised that any new stamp “scheme” should “*be of such variety of color and form and design as to render the Stamps of different values easily distinguishable...*”

As an aside, a Blackwell family owned Roosevelt Island until 1828—not sure if H.(?) Blackwell, Esq. is from the same family.



**COVER #3:** Payment envelope sent airmail from Burbank, California to Springfield, Illinois on March 1, 1938. The plane was blown off course and crashed into the side of Buena Vista Crest in Yosemite National Park at an altitude of 9,500 ft.

The pilot and first officer both were killed. The wreckage was not located until June 12. All 14 pounds of mail were salvaged and forwarded on June 14 and 15 from the Yosemite Park post office. All pieces were endorsed by hand as shown.



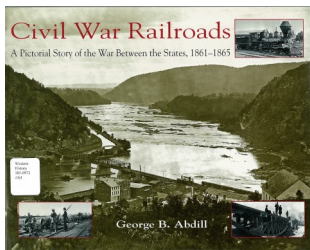
Damage to this cover was repaired with three official seals (back). This fascinating cover was purchased inexpensively from an APS sales book a few years ago. There are still treasures to be found in dollar cover boxes!

*(Continued from page 10)*

**NON-PHILATELIC (Railroads)**

***America's Fighting Railroads: A World War II Pictorial History***, by Don DeNevi

***Civil War Railroads: A Pictorial Story of the War Between the States, 1861-1865***, by George B. Abdill



***Classic American Railroads***, by Mike Schafer

***Classic American Streamliners***, by Mike Schafer and Joe Welsh

***Colorado's Mountain Railroads, Volume II***, by R.A. LeMassena

***The History of the Atchison, Topeka & Santa Fe***

***The History of the Southern Pacific***, by Bill Yenne

***The History of the Union Pacific: America's Great Transcontinental Railroad***, edited by Marie Cahill and Lynne Piade

***The Iron Horse at War***, by James E. Valle

***North American Railyards***, by Michael Rhodes

***Rio Grande: Mainline of the Rockies***, by Lucius Beebe & Charles Clegg

***Rio Grande Steam Locomotives: Standard Gauge***, by Donald J. Helmburger

***Trains***, by Robert Selph Henry

***Union Pacific Railroad System Employee Timetables, Volume One*** (February 29, 1948)

# DALENE AND BLAINE THOMAS

by John H. Bloor

When the Rocky Mountain Philatelic Library first opened its doors in 1993, Dalene Thomas (nee Towndrow) was right there. She was the sixteenth collector to become a library member. Her commitment to our library remained strong for the next 27 years. It was cut short only by her death this past October at age 78.

Dalene volunteered at the library in many ways, not necessarily in this order. She organized the Volunteer Appreciation Dinners, held at local restaurants, as a way to thank our many hard-working volunteers. She planned the summer picnics to show our members how much their support means to the library. She served on the RMPL Board of Directors as a Director for several three-year terms and was a Director Emeritus.

Dalene was also involved in many other philatelic activities here in Denver. She was a member of the organizing committee for the Rocky Mountain Stamp Show. At various times she was in charge of getting volunteers to staff the jobs needed to run the show and was Awards chairman. She was Secretary of the Collectors Club of Denver for a number of years. She founded TOPIC, a club here in Colorado for collectors of topical stamps.

Dalene was a nationally recognized exhibitor, primarily of topical subjects. She had an exhibit about circus wagons on stamps which won national gold medals. This was particularly remarkable because it consisted primarily of first day covers. Another of her gold medal exhibits was titled "Pharos, Lighthouses of the World". Her other major exhibits included ones on Jules Verne, Vincent Van Gogh, and Sunflowers. She donated copies of these exhibits to the RMPL. She was working on a postal history exhibit titled "Laundry Day 1880-1920" at the time of her death. She liked to share her exhibiting skills and was a great mentor to struggling exhibitors. Dalene also collected postal history from Trinidad where she was born on June 5, 1942.



In keeping with her interest in topical collecting, she was an officer of the American Topical Association (ATA) for many years. She was Secretary (1996 to 2000), President (2000-2003), and Vice President (2008-2012). She founded the Lighthouse Stamp Society, was president, and edited their Bulletin for 27 years.

Blaine Thomas, Dalene's husband of 59 years, passed away 6 weeks after Dalene. Although he was not a collector, he was always there to help Dalene in her many philatelic roles. He was born in Whitewater, Wisconsin on May 22, 1940 but moved to Denver as a child, graduating from North High School. He attended Colorado State University where he met Dalene. Together they raised three sons, were grandparents to 12 children, and great grandparents to three more.

Blaine completed ROTC in college then enlisted in the army. He was trained as a helicopter pilot and served in Korea and Viet Nam.

After returning home he worked as a bakery supervisor at the Keebler company. Many of us have enjoyed Blaine's rhubarb cake at various RMPL events. My wife and I have the recipe for it if anyone would like a copy!

Dalene and Blaine have been a fixture at the library and library events and in the Denver philatelic scene for so many years that it is hard to imagine not having them around. We all will miss both of them!



# RMPL Board of Directors Meeting—October 15, 2020

(Summarized-full texts of the minutes are maintained at the Library)

The meeting was called to order at 4:00 p.m. All board members were present except for Steve McGill and David Weisberg. Guests included Paul Domenici, Steve Nadler, Eric Carlson, Lewis Bussey, Jeff Modesitt, and Steve Schweighofer. The minutes of the August 2020 meeting were approved. The next Board meeting is scheduled for Thursday, January 21, 2021 at 4:00 p.m.

## Financial Reports

The following financial reports were distributed as handouts at the meeting: Transaction List by Vendor August through September 2020; Revenue and Expenses January through September 2020; Revenue and Expenses August through September 2020; and Balance Sheet as of September 30, 2020.

## Old Business

### Roof Repair

The Board agreed to postpone work on the 2048 roof until next year. Unless we get some big snows, the current roof should be ok until then.

Tonny also suggested that we seek donations from members and others for various projects like the roof repair, air conditioners, etc. The endowment program that David Weisberg is working on could also be a source of special project funding.

### Library Expansion Report

RMPL member and retired architect Lewis Bussey was invited to repeat a presentation of a library expansion proposal that he gave to the Board about 4 ½ years ago. Lewis distributed a handout describing and illustrating the proposal.

The proposal is separated into three projects, which can be selected individually or combined. The main issue for the purpose of this meeting is that Arapahoe County likely will not approve plans for combining the two buildings if we sell the vacant lot. Loss of the vacant lot negatively affects the number of required parking spaces.

It is estimated that (except for Project 1 by itself) the cost could be as high as \$350,000 to \$400,000. Connecting the two buildings also would require bringing several other structural elements up to code.

Since some were thinking that we could partially fund the building connection by the sale of the vacant lot, this option may now be highly questionable.

No further discussions or actions were taken at this meeting.

## New Business

### Volunteer Appreciation Dinner

Due to the COVID19 pandemic, this year's dinner has been canceled.

### Elections

As Chairman of the Election Committee, Steve Nadler distributed a draft of an elections article to appear in the next issue of *Scribblings*. The only change was that the new non-board position of Donations Coordinator is to be appointed by the president. This change was authorized by a motion which was seconded and passed. A motion to name this position "Donations Coordinator" was also seconded and passed.

Steve also noted that there are candidates for all of the Board positions. Work on the ballots is underway, and volunteers are needed to help with the mailings.

### Zoom Request

Due to reported problems by others who have used this medium, the Board turned down a request to get involved with Zoom.

### Snow Removal

It was agreed that we should stay with the same people we have been using. They have done a good job for us.

### Librarian's Report

Sherri has developed a new section in the library for exhibits.

A new version of the cataloging program InMagic is being adopted. It is said to be more user-friendly. In concert with this, Sherri is going book-by-book through our listings to correct cataloging errors, etc.

Jim Kilbane added that we have been advised to convert our many VHS tapes to a more stable format. The same is true for the 35mm slides.

### Finance Committee

As a member of the Finance Committee, Steve Nadler recommended that since we have just had a full audit, in the next year we would only need a Financial Review. Steve felt that this would give the new treasurer a good view of the library's finances. The Board approved going with a Financial Review.

*(Continued on page 15)*

## Donations

The library thrives on the enthusiasm and generosity of its members. The following people listed by last name made donations to the library since the last donation listing.

<b>Paul Albright</b>	<b>Glenn Mallory</b>
<b>Almyrna Bloom</b>	<b>Anthony Marks</b>
<b>Fred Bower</b>	<b>Robert Martin</b>
<b>Mark Carapella</b>	<b>Michael Mason</b>
<b>Deborah Carney</b>	<b>Gary McIntyre</b>
<b>Ruth Caswell</b>	<b>Judy Mitchell</b>
<b>Attilio Catanzano</b>	<b>Robert O'Brien</b>
<b>Jacqueline Cheong</b>	<b>Alex Papp</b>
<b>Donald DeWitt</b>	<b>Del Peterson</b>
<b>Peter Ditlow</b>	<b>SCC Library</b>
<b>Nolan Flowers</b>	<b>Robert Schlesinger</b>
<b>Paul Frese</b>	<b>Richard Sisco</b>
<b>Mark Gonzales</b>	<b>Calvin Timpe</b>
<b>James Hirstein</b>	<b>Jack Van Ens</b>
<b>Cary Jones</b>	<b>Ravi Vora</b>
<b>Michael Larkin</b>	<b>Robert Wordell</b>
<b>Mike Ludington</b>	

## REMEMBER TO VOTE!

Ballots are due no later than  
January 31, 2021

## NEW MEMBERS

- ◆ **Tim Longbrook**, Boulder, CO – Collects Worldwide to 2000
- ◆ **Christy Hansen**, Red Feather Lakes, CO – Filling out family albums
- ◆ **Douglas Bowen**, Aurora, CO – Collects History, Transportation, and Military
- ◆ **Charles Schafstall**, Sylvania, OH – Collects Scout Slogan Meter Stamps
- ◆ **Stephanie Christian**, Highlands Ranch, CO

For the Record: Next Board Meeting:  
Thursday, January 21, 2021  
at 4:00 p.m.

(Continued from page 14)

## Digitizing Scribblings

Jeff Modesitt announced that in a future issue of *Scribblings* he will have a piece about the cost effectiveness of offering members the choice of receiving *Scribblings* in digital (pdf) format. The Board approved this, including the use of dollar figures to illustrate the savings.

## Donation of Auction Catalogs

Jeff asked if the library is interested in the large collection of auction catalogs owned by our member, the late Greg Frantz. Jeff said that he will work with the family to get the material to the library over a period of time. The Board agreed and offered to help supply boxes.

## Final Thoughts

With regard to treasurer duties, Tonny stated that he will make bank deposits once a week, pay invoices, handle reimbursements, and pay the librarian's salary.

Tonny thanked everyone for their support during these trying times.

Finally, Jeff Modesitt urged everyone to write an article for *Scribblings*.

The meeting adjourned at 5:50 p.m.

Paul Lee, Recording Secretary

## From All of Us Who Work on *Scribblings* to All RMPL Members

**May the New Year allow us to  
gather without fear and pursue our  
interests without restriction!**

**May you enjoy health and joy in  
the coming months and years!**

**May you see the need to write an  
article or two to share with your  
fellow stamp collectors!!**



Hours: Monday, Tuesday, Wednesday, Friday, Saturday 10 a.m. - 4 p.m.  
Thursday 2 - 8 p.m. Closed Sundays and Holidays. Phone: (303) 759-9921

*Meeting times and places sometimes change. It is best to call the library or the club to confirm the place and time. A calendar of reserved club times is kept at the library by the Operations Manager, Dasa Metzler. Clubs should check the calendar regularly and notify Dasa at (303) 322-1231 of any changes or updates. All requests to reserve meeting time and space for philatelically related meetings other than those listed here must be approved and scheduled with Dasa well in advance.*

**\*\*\*\* January 2021 \*\*\*\***

- Jan 2 Sat**-No Meeting  
Scandinavian Collectors Club
- Jan 2 Sat**-No Meeting  
TOpical Philatelists In Colorado (TOPIC)
- Jan 6 Wed**-No Meeting  
Aurora Stamp Club
- Second Saturday at the RMPL**  
**Jan 9 - 9:00 a.m.**  
No Meeting
- Jan 9 Sat**-Meeting 10:00 a.m.  
Mexico/Latin America Club
- Jan 10 Sun**-Meeting 1:00 p.m.  
Denver Postcard Club
- Jan 13 Wed**-No Meeting  
Denver Germany Stamp Club—Joint Meeting with  
Austria-Hungary Stamp Club
- Jan 14 Thu**-Meeting 2:00 p.m.  
Cherrelyn Stamp Club-call to verify
- Jan 16 Sat**-Meeting 9:30 a.m.  
Denver Young Collectors
- Jan 21 Thu**-4:00 p.m.  
**RMPL Board Meeting**  
**Open to all!**
- Jan 24 Sun**-Meeting 1:00 p.m.  
Great Britain and Commonwealth Collectors Club
- Jan 26 Tue**-Meeting 7:00 p.m.  
Rocky Mountain Stamp Show Committee
- Jan 27 Wed**-Meeting 11:00 a.m.  
Denver Stamp Club

**\*\*\*\* February 2021 \*\*\*\***

- Feb 3 Wed**-Meeting 2:00 p.m.  
Aurora Stamp Club
- Feb 6 Sat**-Meeting tentative 10:00 a.m.  
Scandinavian Collectors Club
- Feb 6 Sat**-Meeting 1:00 p.m.  
TOpical Philatelists In Colorado (TOPIC)
- Feb 7 Sun**-1:00 p.m.  
Denver Postcard Club
- Feb 9 Thu**-Meeting 2:00 p.m.  
Cherrelyn Stamp Club
- Second Saturday at the RMPL**  
**Feb 13 - 9:00 a.m.**  
No meeting
- Feb 13 Sat**-Meeting 10:00 a.m.  
Mexico/Latin America Club
- Feb 13 Sat**-Meeting 11:30 a.m.  
Rocky Mountain Aero and Aerophilately Club  
Everyone welcome
- Feb 14 Sun**-Meeting 1:00 p.m.  
Denver Postcard Club
- Feb 17 Wed**-No Meeting  
Denver Germany Stamp Club—Joint Meeting with  
Austria-Hungary Stamp Club
- Feb 20 Sat**-Meeting 9:30 a.m.(call)  
Denver Young Collectors
- Feb 21 Wed**-Meeting 11:00 a.m.  
Denver Stamp Club
- Feb 23 Tue**-Meeting 7:00 p.m. (call)  
Rocky Mountain Stamp Show Committee
- Feb 28 Sun**-Meeting 1:00 p.m. (will verify by email)  
Great Britain & Commonwealth Collectors Club

Please verify all meeting  
dates and times!

Please note that there will be no  
Second Saturday presentations  
until further notice.