

Scribblings

...from the Rocky Mountain Philatelic Library



Ellengail Beuthel, Librarian...

Vol. 26 - No. 6
www.rmpldenver.org

2038 South Pontiac Way, Denver, CO 80224-2412
(303) 759-9921

November / December 2018
Email - rmpl@qwestoffice.net

IN THIS ISSUE

Collecting Modern Covers
by Jeff Modesitt 1



President's Message
by Tonny Van Loij 2

Free Fronts: Their Importance and Understanding Them
by Thomas Slemmons 6



New on the Shelves 8

Second Saturday Programs
by Lugo and Searls 12

Board Minutes 13

Five-Club Auction 14

New Members 15

Donations 15

Activities Calendar 16

Collecting Modern Covers

By Jeff Modesitt



Fig. 1. Two days of mail produced four stamps. Fifty years ago, this load of mail would have provided a young collector with a dozen or more examples for his or her collection.

The Challenge

Whether going through RMPL cover boxes, the higher-priced selection of a specialist dealer at a national show, or the daily mail, the collector of modern material is challenged by changing times (Fig. 1). This sounds a little preposterous, but true. You all know one reason - the increasing dominance of electronic communications technologies - but you may not have

(Continued on page 3)

Scribblings

Newsletter of the
Rocky Mountain Philatelic Library

2038 So. Pontiac Way
Denver, CO 80224
Phone: (303) 759-9921
email: rmpl@qwestoffice.net
Hours: 10 a.m. to 4 p.m. daily,
Thursday, 2 p.m. to 8 p.m.
Closed Sundays & Holidays

Editor

Jeff Modesitt (jeffmcolorado@gmail.com)

Copy Editors / Proofreaders

Don Beuthel, Ellengail Beuthel
John Bloor, Roger Rydberg,
Steve Schweighofer

Librarian

Ellengail Beuthel

Scribblings is published bimonthly by the Rocky Mountain Philatelic Library. The RMPL is a chartered Colorado nonprofit corporation and is an IRS-designated 501(c)(3) charitable organization. Membership subscriptions over that for the contributing membership, and donations of appropriate philatelic materials, may be deductible for US income tax purposes. The Library is a volunteer organization. Financial donations, philatelic books, stamps, supplies and donations of your time, are welcome.

A basic membership with the RMPL is \$25 per year, and includes checkout privileges and *Scribblings*. Call for more information.

Knowledge is better when shared. Consider writing an article for *Scribblings* about your favorite philatelic topic.

President..... Tonny Van Loij
Operations Manager Dasa Metzler
Vice President Jim Kilbane
Corresponding Secretary..... Bill Plachte
Recording Secretary.....Paul Lee
Treasurer Tim Heins, CPA

Directors: John Bloor, Steve McGill,
and David Weisberg.

Director Emeritus: Dalene Thomas.

Ex-officio member: Ellengail Beuthel.

Ex-officio member: Don Dhonau

Officers and Directors may be contacted
through the RMPL.

Web page — www.rmpldenver.org

The President's Message

I hope all had a great summer and are ready for fall and the shorter days. These are the times that we can work on our collections and catch up with tasks we did not feel like doing when the sun was shining and travels came first.



Finally my time is no longer consumed by demands from the water department and problems associated with that. We are in compliance for a year and, I must say, the plumbing company charged us reasonable prices to make that happen. Those people ran into some surprises due to the age of the buildings and no available blue prints. Anyway, I thank them.

The next task at hand is our insurance policy which needs to be updated by early 2019. I will be soliciting bids from different providers and hope to get that done before the January board meeting so I can give the board an update.

In addition to my wife's health condition, which will be first on my mind, I will have to have a knee replacement sometime in 2019. It will be the whole works - knee, kneecap and, maybe, ligament repair. Keep me in your thoughts.

We continue to need more volunteers for sorting. We also need to think about establishing back-up positions for all our operational areas. We all are aging and you never know what can happen. If you are interested in getting active with our publications, our auctions, the stamp mart, building maintenance, or any other area, please contact Dasa Metzler or me.

As always, many thanks to our volunteers, members, and visiting collectors for their participation in RMPL activities and especially for their purchases.

Tonny Van Loij

Get Active!

We need additional help in almost every area of RMPL operations, especially back-ups for publishing and stamp mart operations. If you are interested in getting more active with the RMPL, whether it be helping publish *Scribblings*, sorting donations for our stamp mart, or helping with library maintenance, please contact Tonny Van Loij or Dasa Metzler.

303-759-9921

(Continued from page 1)

thought about its ramifications on the postal history aspect of our hobby.

The timeframe I define as “modern” is roughly the past 50 years. Fifty years ago, the letter dominated both business and personal communications. Post cards were the choice when on vacation. Telephone calls were expensive and, especially internationally, a hassle. All this has changed with cell phones, computers, and the Internet. What does this mean to a collector of modern covers? Think about the last time you received a long letter from a friend or even a family member. How many first-class letters did your family receive last month?

It is a safe bet that most of those reading this article were the youthful recipients of stamps torn off incoming mail by family and friends. The mail box was a viable source on which to build our collections. That is no longer true and hasn't been for some time as evidenced by the pile of mail illustrated in Figure 1. This means that the supply of stamp-bearing covers, in both absolute and relative terms, has decreased, especially over the last two decades.

Out of Sight, Out of Mind

By itself, the decrease in cover availability is important, but it also triggers several other negative consequences. First, family and friends lose the habit of saving stamps when there aren't any to save to pass on to an aspiring young collector. Second, what does arrive in the daily mail is predominately junk mail which has the half-life of about two seconds before it finds itself in the trash can. So much for the supply factor and what used to be daily reminder to all mail recipients of the utility, beauty, and collectability of stamps.

That leaves the demand side of the equation. With millions of collectors worldwide, there must be a real imbalance that would result in high demand for modern material. This doesn't appear to be the case. Most modern covers aren't currently worth a dealer's time to inventory and take to shows. When they do offer material, it is usually found in the dollar boxes.

My rationalization for this situation lies primarily in demographics and the human propensity to form life-long habits. Statistics suggest that stamp collec-

tors are an aging group with the total number of participants rapidly shrinking (See inset box).

The fact that we started collecting when we were 10 years old, plus or minus a few years, also suggests that we now have well-established collecting preferences (habits). As every collecting generation did up until fifty or so years ago, we created the demand for what we thought of as modern material. If you started in the 1950's, there were plenty of affordable stamps from the first part of the century. Generally, stamps issued in that timeframe became the foundations of our collections.

Today, stamp collecting is out of sight and out of mind for the younger generations with probably less than 12.5% being younger than 50 years old and only a few percent younger than 15! Modern material doesn't get the support from a large incoming group of collectors as happened when we were young. Without a dynamic youth influx into our hobby, there are relatively few collectors who take the time to accumulate modern material from the traditional sources - personal correspondences and business mail. That is the problem, but it is also the opportunity for anyone who might be looking for a fascinating new challenge.

Somewhat More Complicated

While the typical cover may look rather intellectually unimposing, just the basics can require a fair bit of analysis. With a stamp want list, this process is relatively straightforward. With covers, that is not the case, as each is essentially unique and presents more complexity. Are you interested in rate periods, destinations, a special service, single use covers, specific stamps, routes, postmarks, ancillary marks, censor marks, censor tapes, or tax marks? See Figure 2 for a small set of examples. I use Great Britain material to illustrate, but every country will have similar varieties.

The list can get lengthy and therein lies a potential problem if you are new to cover collecting. It is probably best to initially pick a specific focus because acquiring the pertinent information will usually require multiple references. Most of these references can be found at the RMPL or through its members.

(Continued on page 4)

APS Membership

2008	40,064
2009	37,927
2010	36,264
2011	34,850
2012	33,689
2013	32,647
2014	32,020
2015	31,229
2016	30,688
2017	29,706

APS Recruitment

“In 2016, our largest single age group for recruitment was 60-to-69 years, about 31 percent of new applicants. The second largest, by a small margin, 70-to-79 years at 28 percent. Younger-than-50 recruitment was only 12.5 percent of all new applicants.”

Single Use Covers

The most-used criterion for cover collectors is “single use” [proper non-philatelic use of a stamp for its primary intended service(s) during the appropriate rate period]. Theoretically this means that most mail can be franked with a single stamp. Sounds simple, but single use collecting is much more challenging than it sounds. Take modern Great Britain as an example.

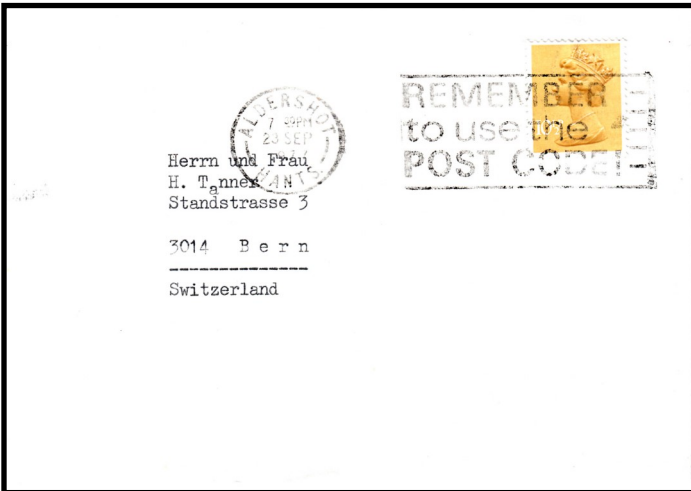


Fig. 2. A highly sought-after 10 ½p Machin cover to Switzerland found in a RMPL cover box.

During Elizabeth II’s reign following decimalization in February 1971 to the present - there have been over 35 rate periods as determined by 1st and 2nd class domestic postage for a letter. Add to that list, a similar number of rate periods for single use rates to European destinations and the two or three world airmail zones and the list rapidly balloons to hundreds of possible single use covers (Fig. 2). By adding surface mail rates, express rates, registered mail, recorded delivery, mail for the blind, small package, and printed paper rates, the list probably exceeds a thousand possible single usages.

Billions and Billions

The Great Britain Machin is probably the most common stamp design in the world. There have been multi-billions printed and used. Collecting the basic set mint or used off-cover is not particularly difficult. You would think that having billions and billions of stamps used would bode well for the cover collector, but experience suggests differently. In fact, it would be easier to buy (money no object) an example of each regularly issued postage stamp of Great Britain, including the high-priced 1£ and 5£ values (from any major British or U.S. dealer), in an afternoon, than it would be to acquire a collection of Machin single use covers over a period of days or even months from similar sources. I suspect that a similar claim could be made regarding the U.S. “Prexie” issues or any simi-

lar major definitive set. There is simply no single source that I have found to make the quest easy.

Sources

This brings up an important aspect of cover collecting - finding material. Given the generally low value of individual covers, it stands to reason that many will be found close to their mailing destinations. A case in point is my recent experience at the Rocky Mountain Stamp Show, held this past May.



Fig. 3. A 1974 legal usage of a cutout found in a dealer’s dollar box at the Rocky Mountain Stamp Show (2018).

During the first day I attended the show, I sorted through an estimated 3,000 to 4,000 dollar-box covers for Great Britain Machins. The boxes contained about 25 Machin airmail-rate covers to the U.S., several special service envelopes and an example of a 1974 legal cutout usage (Fig. 3). This is really good because these covers are far less common than the 1st and 2nd class inland material that would dominate similar material found at a British show.

Every Machin cover was found in the low-priced, unsorted boxes. No Machin covers were carried by dealers that I visited as part of their individually priced items. The bad news is that much of the material found in these boxes is damaged because they don’t merit individual cover protectors.

You don’t have to wait for the next RMSS event to browse through cover boxes. Dealers at local shows and bourses usually have material for purchase. The most convenient sources for most *Scribblings* readers are the cover boxes arranged by country at the RMPL. I have had more success sorting through this material than at any dealer’s dollar box. Of my list of the ten most difficult to find decimal Machin covers, those boxes have produced great examples (Fig. 4)!

Auctions also provide an excellent source of covers. Typically, modern material will be lotted as accumulations with very reasonable starting estimates. Some of these accumulations can be treasure troves because auction house estimates are based on cata-

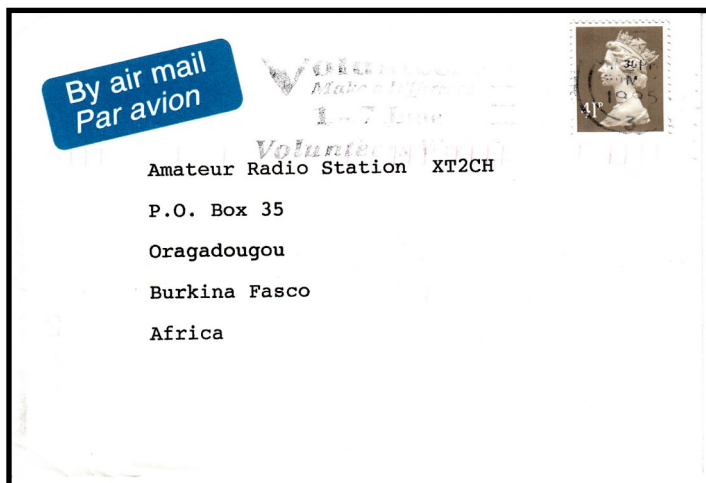


Fig. 4. An interesting destination cover found in the RMPL country sorted cover boxes.



Fig. 6. A colorful International Tracked and Signed cover with a delightful array of Post & Go labels.

logue values of individual stamps or the number of covers in the lot and not on rates, destinations, or service levels (Fig. 5).

The best source, however, is to find someone who collects covers and has an accumulation of duplicates. One such member of the RMPL sold me his accumulation of covers (about 1000) to help start me on my Great Britain cover quest. Fifteen years after acquiring that very large box of envelopes from him, I still comb through the remainders to see what special markings, destinations, or rate period I might have missed earlier because I originally presumed the cover to be common since the stamp only merited a minimal catalogue price.

Several other RMPL members regularly give me covers from recent correspondence (Fig. 6).

Common May Not Be Common: A Rare Opportunity

The irony here is that, despite the scarcity of much "common"

modern material, most modern covers are still very inexpensive. Ultimately, this situation will change. Recent listings on eBay suggest that Great Britain

special services covers such as Swiftair and Express covers are seeing some nice price escalation. These covers, while not common, can still be found in the dollar boxes and are often quite colorful with interesting destinations. Most dealers simply don't have the time or expertise to sort through bulk material which gives a knowledgeable collector an unusual advantage.

As always, knowledge is king. If you have a batch of covers stashed away, take a look at them with a fresh eye. Check out a rate book from the RMPL and see if that common stamp makes up a rare usage because it was mailed in a four-day rate period (Great Britain 75p 1st class Registered: January 30 1980 to February 3, 1980). Those rarities are out there for the picking. Join the hunt!



Fig. 5. A hard-to-find usage of an entire newspaper to New Zealand from an auction lot.

FREE FRONTS

THEIR IMPORTANCE AND UNDERSTANDING THEM

By Thomas Slemons

Post Towns were almost always on a primary mail route and were "collection" points for letters from surrounding towns & villages.

In Great Britain the privilege of sending a letter without paying postage began about 1652. By the early 1800s they became common as the franking privilege had been extended to certain civil servants, church officials, members of parliament and royalty. Abuse of the privilege became rampant (Fig. 1). The British Post Office took measures to prevent abuse and these included limiting the number that could be sent in one day. A file was kept with examples of authorized signatures. A comparison could be made between the signature to insure it was not forged and it was the same handwriting as the address. Other strict rules required the sender to complete the letter in a specific manner and to be located within fifteen miles of the place it entered the post.

In Figure 2, at the top left, the nearest Post Town was required. At the top right, it had to have the date of posting. At the bottom left was the signature of the sender. If a mistake was made in any of these requirements, they had to be corrected by the sender by striking the erroneous entry and initialing the



Fig. 1. Abuse of Free Franking privileges was rampant as illustrated by this Henry Cole Cartoon of 1839. Cartoons such as this one were used in support of Rowland Hill's 1837 campaign to reform British Post Office operations.

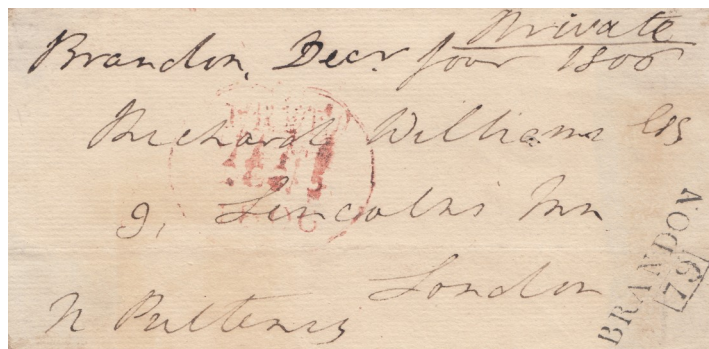


Fig. 2. A correctly completed Front entitling the sender to Free Franking from Brandon. The Brandon 79 1806 dispatch mark is the earliest known usage.

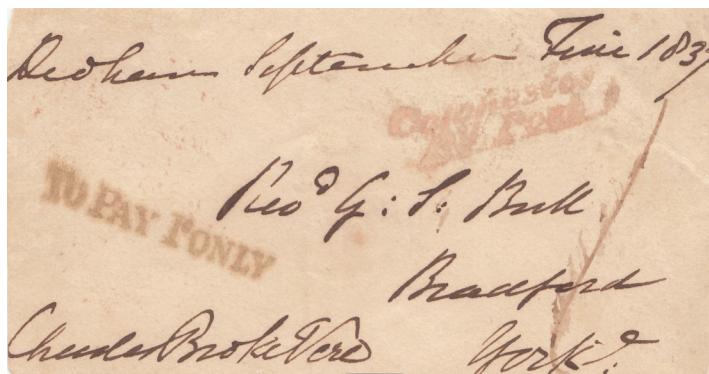


Fig. 3. The difference between a Post Town and a Receiving House mattered. In this case, the error was missed and the letter was delivered without a correct address.

Receiving Houses were the smallest of postal entities. They were collection points for both receipt and delivery of mail, were always a part of a Penny Post, and were not on a mail coach route.

corrected new entry. This cover came from Brandon and it has the bonus of the Brandon boxed 79 dispatch mark, which is the earliest known example of this mark, December 4, 1806. The application of a dispatch mark was not required, but often done. These fronts of covers are a great source of postmarks and dates of use.

Sir Charles Broke Vere sent the letter illustrated in Figure 3 from Dedham, which was not a Post Town, but a Receiving House in the Colchester Penny Post. He should have crossed out "Dedham" and written in "Colchester." The Post Master allowed it in error.

The sender of the letter in Figure 4 was the Duke of Clarence, the third son of King George III, Queen Victoria's uncle and later King William IV. He had no legitimate heirs, so his niece Victoria became queen.

He was probably visiting Sudbourne Hall and, when he prepared the letter, he wrote Sudbourne at the top left. Sudbourne was not a Post Town, but a Receiving House in the Woodbridge Penny Post. He was asked to correct it and he did, changing it to

Woodbridge, signing Clarence beneath the correction. It received a Woodbridge 78 dispatch mark.

Sir Charles Broke Vere lived at Broke Hall in Nacton. Nacton was a Receiving House in the Ipswich Penny Post (Fig. 5). He correctly entered Ipswich as the nearest Post Town. He forgot that the new year had just begun and he entered the date as "January six, 18340." This was an invalid date and should have been corrected and not allowed to enter the post without correction. As it passed through a Penny Post, a black manuscript 1 was added indicating that 1d was due from the addressee to receive the letter.

Archibald Acheson, the second Earl of Gosford, lived at Beccles and correctly entered Beccles as the Post Town. However, he wrote the letter on January eighth, 1840, and tried to post it on the next day, the ninth (Fig. 6). The letter was disallowed so he changed it to the ninth, the last day free fronts were allowed and initialed it with his "A".

The cost of postage was so high that those with the franking privilege were often asked to sign a blank sheet of paper so their friend could send a letter free. There is a letter in my collection from the wife of a church minister who received a large salary at the time and was furnished a home, so lack of funds to pay the postage was not an issue. The woman wrote to her father in Edinburgh, "I send this direct in case Mr. Bannerman should not be able to frank it tomorrow and I am unwilling to delay acknowledging your letter." The letter would have cost her one shilling and three pence for the distance postage, plus one penny for the Colchester Penny Post, and another half penny for the Scottish tax. No one was above cheating the Post Office.

Letters could be also be sent free to members of Parliament and certain church officials. These must be available, but few are seen as there is no signature on the front and did not attract autograph collectors.

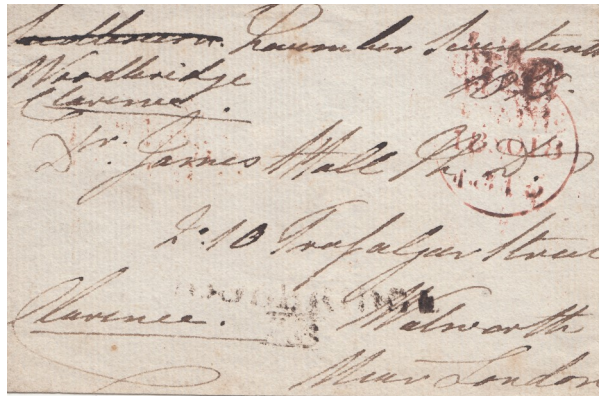


Fig. 4. An incorrect front that was properly corrected.

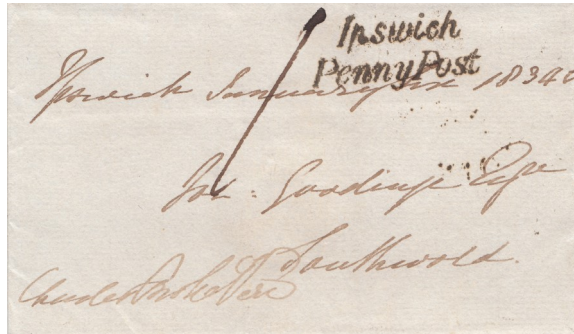


Fig. 5. This letter past through the Penny Post costing an additional 1d fee.



Fig. 6. A Free front sent the last day of free franking privileges (January 9, 1840), with date correction made and initialed. The "Free" mark was applied a day later when the cover arrived in London.

They did not need to conform to the requirements imposed on the other senders of free letters.

One of the aims of Rowland Hill's postal reform plan was to eliminate free franking. The Select Committee for Postage analyzed the number of letters sent from throughout the country. This required the Postmasters in Post Towns to report the number of letters they handled in a one week period. The purpose was to analyze the revenue the postal system produced and to decide if the system could handle the anticipated increased volume of mail if postage rates were lowered to one penny. The three reports required, first the number of letters handled, then the number of paid and unpaid letters, and finally the number of letters at every rate, including free, handled during the week. Some weeks the free letters reached about 75% of the letters that passed through the Post Offices in the county of Suffolk.

When it was decided to have the Uniform Four Penny Post as an experiment to see if the postal system could handle the volume of mail it produced, free franks were still allowed. The experiment was successful and free franks ended on the ninth of January 1840. The next day the Uniform Penny Post began. Even Queen Victoria gave up her privilege of sending free mail.

Autograph collecting became fashionable in the 1800s and sadly many of the letters were cut and only the front remained. They were often pasted into scrapbook type albums with the collectors sometimes providing useful background information about the senders. Some are still collected by autograph collectors today, especially those of famous persons and royalty.

As a postal historian, I value the information gained from towns to which letters were delivered and thus learning towns within a Penny Post that have not been named as Receiving House towns. Also any postal markings are of great value for types of marks and the dates used. Free fronts can be gems of information!

NEW ON THE SHELVES

UNITED STATES

1989-1990 Definitive Mint Set of Stamps & Stationery, published by the United States Postal Service

Catalog of United States Self-Adhesive Stamps (1996-1999), edited by Alan M. Malakoff

The Confederate Postmaster Provisionals of Baton Rouge, Louisiana, by Richard L. Calhoun

Confederate Stamps, Old Letters and History, by Raynor Hubbell

Illinois Town and Type List, compiled by James O. Howe

Research Paper Number 2: Folded-Style Booklet Checklist Includes Booklets and Self-Adhesive Sheetlets, published by the Bureau Issues Association

Saddles and Spurs: The Pony Express Saga, by Raymond W. Settle and Mary Lund Settle

ASIA

Indian Advertising Telegraph Forms 1923-1927, by Steven Zwilling

EUROPE

300 Jaar Aanwijzingen, Postmerken & Poststempels in Nederland (1570-1870), by P.C. Korteweg

Archiv für Deutsche Postgeschichte: 1953 & 1954

Bautenserie 1948: Spezialkatalog, by von Heinrich Wittmann und Paul Salomo

Deutsche Vorphilatelie: Stationskatalog, Katalog der Aufgabestempel (1988) and Supplement (1990), by Peter Feuser and Münzberg



1989-90
DEFINITIVE
MINT SET
OF STAMPS &
STATIONERY

973.9
Line
1989-90

Bureau Issues 769.624 Bur 19628
No. 2 Bureau Issues Association...
INCORPORATED Research paper number 2 :
The United State folded-style booklet checklist
KNOW YOUR COUNTRY'S STAMPS includes booklets and adhesive

RESEARCH PAPER NUMBER 2
(Updated Twelfth Edition)



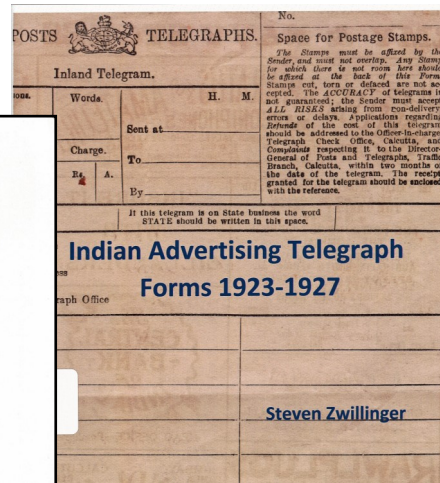
FOLDED-STYLE
BOOKLET CHECKLIST

Includes booklets and self-adhesive sheetlets
from 1977 to June 2001

Available from:
David Eeles
Post Office Box 933
Columbus, OH 43216-0933

Corrections, comments, or new reports should be made to:

Michael O. Perry
Post Office Box 1194
Rainier, OR 97048
E-mail: MOPerry@pacifier.com



Indian Advertising Telegraph
Forms 1923-1927

Steven Zwilling

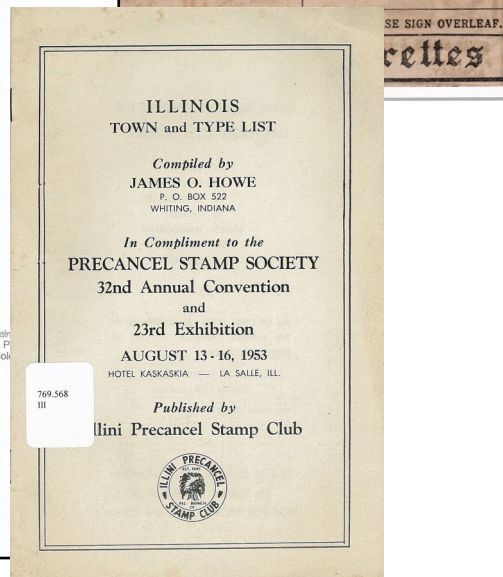
The Confederate Postmaster Provisionals
of
Baton Rouge, Louisiana



A reconstructed sheet of the five-cent Confederate postmaster provisional stamp of Baton Rouge, Louisiana, based on the research and original plating by the author.

973.7
Cal

by
Richard L. Calhoun



ILLINOIS
TOWN and TYPE LIST

Compiled by
JAMES O. HOWE
P. O. BOX 522
WHITING, INDIANA

In Compliment to the
PRECANCEL STAMP SOCIETY
32nd Annual Convention
and
23rd Exhibition
AUGUST 13 - 16, 1953
HOTEL KASKASKIA — LA SALLE, ILL.

Published by
Illini Precancel Stamp Club



Emmerich: Dansk Luftpost Katalog

ETB: Ersttags-Blätter Bund und Berlin, by Manfred Schreiberr

Die Geschichte der Stadt-Brief-Beforderung-Hammonia in Braunschweig, by Gerhard Paudler

Il Servizio Postale a Lavagna Ne Primi Anni del 1800, by Raffaele Ciccarelli

Katalog und Handbuch der Deutschen Zonen-und Lokalmarken, by Ernst Müller

Kriegsgefangenenpost [POWs Post] USA: Handbuch und Katalog, by Werner Boddenberg

Les "Agences des Postes de France a Terre" en Amérique et Aux Antilles ou "Agences Postales Consulaires Françaises" de 1860 a 1881

Verzeichnis der Maschinenstempel und Ortswerbbestempel: Schweiz, published by Schweizerische PTT

West-Berliner Belege zur Währungsreform, by Wolf J. Pelka

CENTRAL AMERICA & CARIBBEAN

Costa Rica Municipal Revenue Stamp Catalogue, edited by Rafael A. Pinto

Costa Rica Postal Catalogue: Third Edition (2004) and Fourth Edition (2014), by Hector R. Mena

Costa Rica Revenue Stamp Catalogue (1998), by Hector R. Mena and Oscar C. Rohrmoser

History of the Revenue Stamps of Costa Rica (1870-1970), by Alvaro Bonilla Lara

TOPICAL

Alphapilex78: l'Automobile nel Francobollo: Esposizione Filatelica Internazionale

The Animals on Postage Stamps, by O.W. Barrett

Anti-Tabak, by Louis Goiris

Catálogo dei Francobolli e Degli Annulli del Giuoco del Calcio, by Giorgio Sini

Catalog of American Space Covers, compiled by Ralph Engel

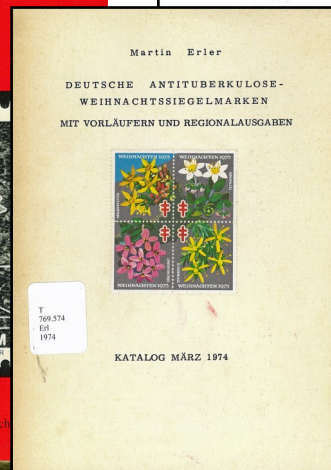
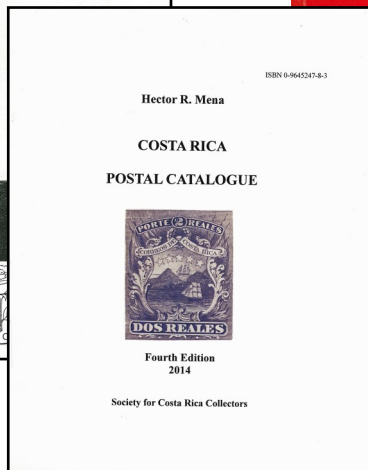
Catálogo de Sellos: Fauna: Mariposas [Butterflies], 25th Edition, Published by Domfil

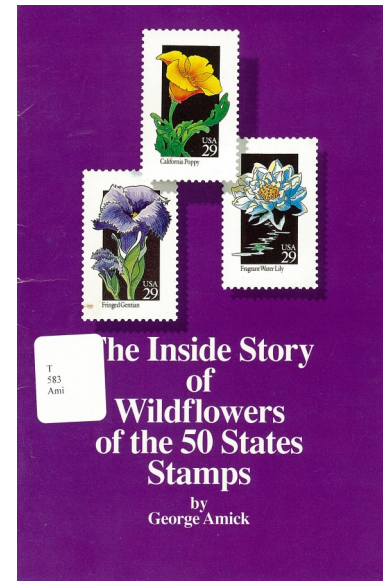
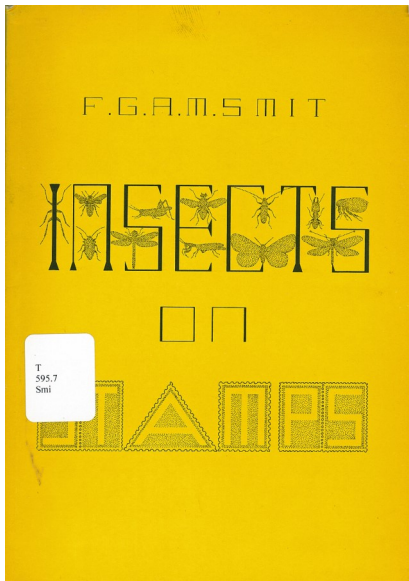
A Check List of the World's Aqueducts, Bridges and Viaducts on Stamps, by Stanley Brown

Collect Fungi on Stamps, by John-Paul Greenewich

Deutsche Antituberkulose-Weihnachtssiegelmarken mit Vorläufern un Regionalausgaben, by Martin Erler

First Men on the Moon: Handbook of Stamps, by R.F. Kitchen





Graubünden Durch de Lupe: Kunst und Kultur auf Postwertzeichen, by Joos Gartmann

Owls Eulen Hiboux et Chouettes, Local & Unofficial Stamps, by D.L. [Dick] Bekker

Insects on Stamps: A Cross-referenced Checklist, by F.G.A.M. Smit

The Railway Theme: A Study of Railways on Stamps, edited by C.A. Hart

The Inside Story of Wildflowers of the 50 States Stamps, by George Amick

Das Reklamesammelbild Sammlerträume: Ein Bewertungskatalog: Von Schokolade bis Schuhcreme-Kleine Kunstwerke in der Werbung, by Evamaria Ciolina and Erhard Ciolina

Katalog der Beitrags und Spendenmarkendes FDGB der SBZ/DDR, by Lutz A. Schlegel

Seashells on Stamps, by Renato Moscatelli

Le Conchiglie nei Francobolli, by Nicola Caferri

Ships on Stamps, parts 1, 4-7, 9, 12, by E.W. Argyle

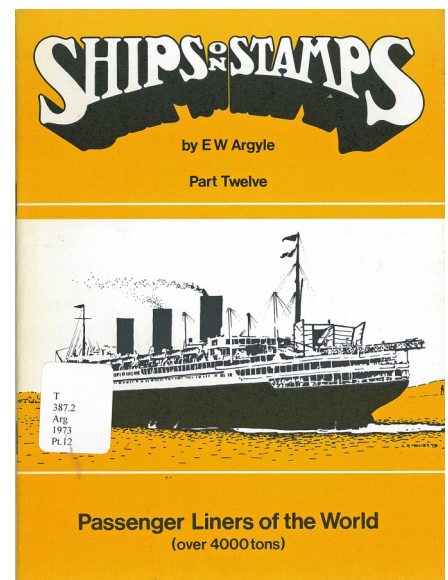
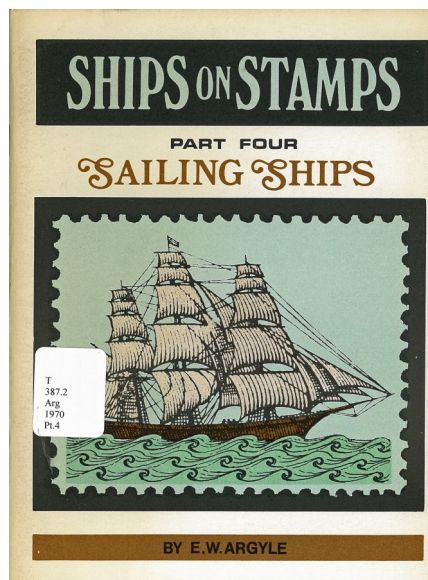
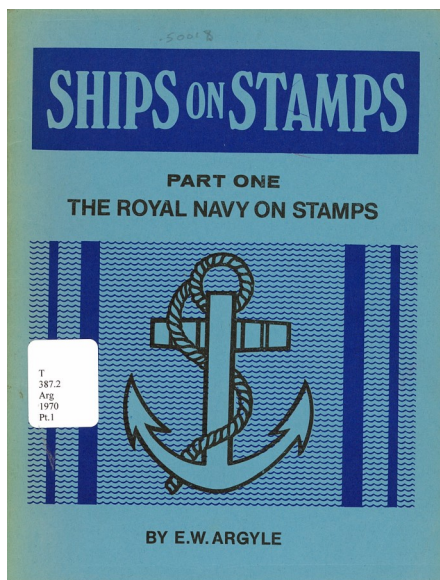
La Vigne et le Vin in Philatélie, by André Dubois

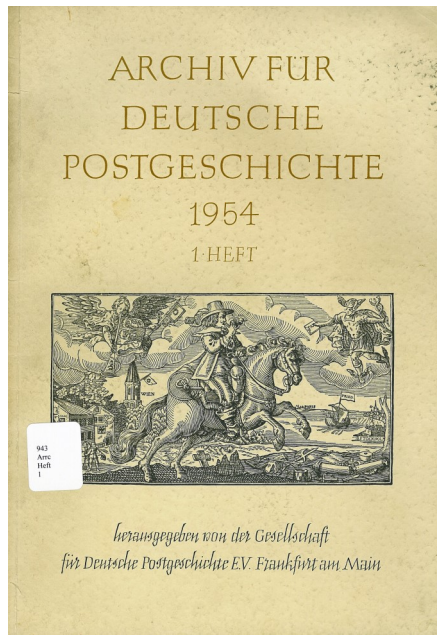
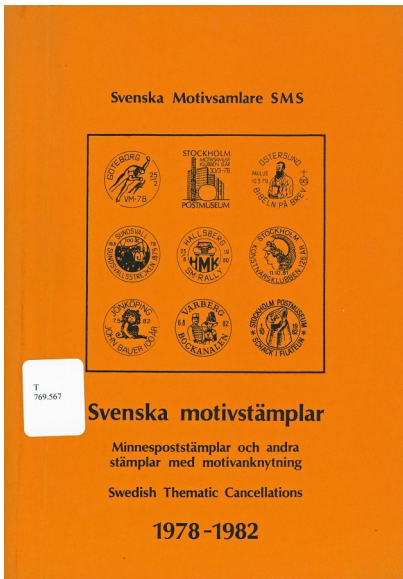
Subject Matter of Philately: A Checklist of Stamp Designs: Supplement No. 3, by Phebe B. Booth

Medicine and Stamps, Volumes One and Two, edited by R.A. Kyle and M.A. Shampo

Svenska Motivstämplrar: Minnespoststämplrar och Andra Stämplrar med Motivanknytning: Swedish Thematic Cancellations 1978-1982

Motivhandbuch Schweiz Nr. 20 (1983) and Nr. 25 (1990), by Ernst Schulnegger





Weltpostverein UPU Spezialkatalog (1982), published by Sieger Verlag

Englisch-Deutsches und Französisch-Deutsches Wörterverzeichnis Philatelistischer Ausdrücke, by Peer-Ingo Litschke

MISCELLANEOUS

Specialised Stamp Collecting, by Robert Bateman

Adalbert Pilch: Gemälde, Eichnungen, Briefmarken, by Adalbert Pilch

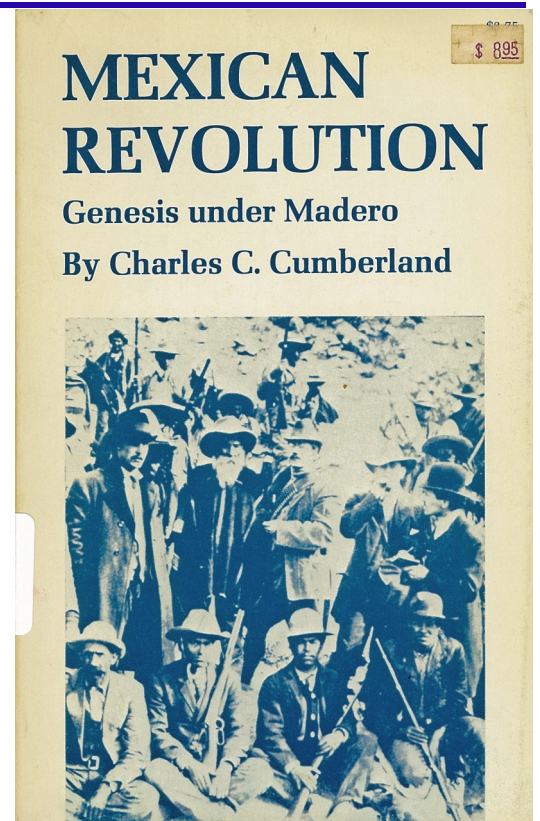
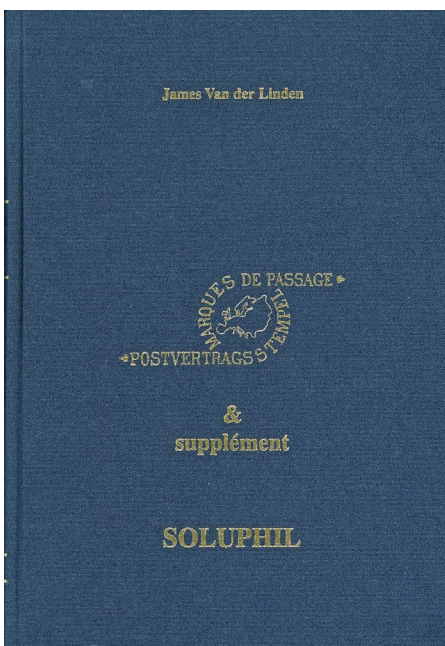
Stanley Gibbon's Priced Postage Stamp Catalogue: Part 3 (1962): America, Asia and Africa

Catalogue Marques de Passage: Origine, Transit, Comptable, by James Van der Linden

NON-PHILATELIC

Das Neue Grosse Briefmarken Buch: Briefmarken - das Schönste Hobby der Welt, by Helmut Nassauer

Mexican Revolution: Genesis under Madero, by Charles Curtis Cumberland



SECOND SATURDAY PROGRAMS AT THE LIBRARY

Second Saturday programs are sponsored by the RMPL and attract a friendly group of folks who are interested in a specific subject, or who are interested in learning more about an area of philately that may be new to them.

*Contact Jim Kilbane if you would like to present a program.
His email address is: aurora_80017@yahoo.com*

November 10, 2018--9:00 a.m.

**Presenter: Sergio Lugo
MOURNING COVERS**

Description: A look at a very little-studied subject by the general philatelic public of a postal history specialty. Using examples from my collection/stock, covers spanning the 1850s to modern day, together with religious cards, enclosures (sans covers) from throughout the world and the United States. Such covers begin as early as 1842 and continue through today in the form of commercial commemorative mourning covers produced by JVC. The specialty is "alive and well" as a quick recent search of eBay showed over 1,000 lots up for sale at a variety of prices, invariably beginning in the \$4.00 range and continuing into the thousands.

For those wanting to review more about them check the specialty philatelic publications of the Mourning Stamps and Covers Club, and their periodical journal that can be found in the RMPL.

December 8, 2018--9:00 a.m.

**Presenter: Travis Searls
Collecting Liberia: 1860-1960**

Description: Over the years, Liberian stamps have received a reputation of being "labels" produced for collectors and not even valid for postage. But have you looked at early Liberian stamps? Liberia issued its first postage stamps in 1860, many being very beautiful, rare and valuable. Come take a closer look at the first 100 years of Liberian philately including regular and commemorative issues, postal history, officials, proofs, specimens, overprints, air mail, stationery, revenues and more!



RMPL Board of Directors Meeting—September 20, 2018

Editor's note: In the past, The RMPL Board meetings reports have been summarized to fit into this back page column. September's minutes are reprinted in full to see which approach the membership prefers. Comments and preferences can be submitted to the Editor at jeffmcolorado@gmail.com.

The meeting was called to order at 5:00 p.m. All Board members were present except Bill Plachte. One guest, Eric Carlson, also was in attendance. The minutes of the last two meetings were approved. The next board meeting is scheduled for Thursday, Nov. 29, 2018 at 5:00 p.m.

Financial Reports

Treasurer Tim Heins discussed several financial reports that were included in the meeting handouts. Under the "Transaction List by Vendor for July through August," Tim highlighted the following:

- Famous Dave's was for the food for the August RMPL picnic.
- Payments to Jim Kilbane were for purchase of the RMPL banner, and for his expenses for representing the library at the APS stamp show in Columbus, Ohio.
- Payment to John Bloor was for the purchase of volunteer recognition items.
- Payment to Republic Services was hopefully the last payment for our former trash pickup service.
- Payment to Swimming Pool Service was for our portion of the new joint dumpster service with our neighbor.

The Income and Expenses report compares July and August of 2018 with the same period for 2017. A second YTD report compares Income and Expenses from January through August of 2017 with 2018. The report shows that currently we are doing a little better than 2017, even when accounting for the refund of the property tax. The Balance Sheet as of August 31, 2018 also was included.

A report titled "UBS Account" tracks the account from January 1, 2017 through August 31, 2018. Interpretation of the report shows that we have made \$11,000 over the period shown.

David Weisberg stated that our current investment portfolio (bond-heavy) has yielded about 3.5%. Of this, the stocks are doing far better, ranging around 14%. Based partly on this, David recommends that we change our investment to a 50/50 rate between equity (stocks) and fixed income (bonds). David also recommended that we move more of our cash into this investment fund.

Tim expressed his concern over finding two old checks that had never been cashed. He also expressed

concern regarding volunteers who make errors ringing up sales.

In conclusion, Tim stated that although we do not have a budget for this year, there will be one for next year.

Technology Report

Due to Roger Rydberg's illness, there has not been a technology report for some time. It was noted that our website has not been kept up to date and it was not known if there were any people who could provide any backup.

At the last Board meeting, Jim Kilbane reported that the company managing our website has sold out to another company. Also, a new video will soon be added.

Old Business

Concrete Work in Rear of Buildings

Tonny stated that we should put off this project for the winter and take it up again next year after it warms up. Since we now have the trash pickup agreement with our neighbor, we can delete the proposed work on one for us.

Volunteer Recognition Dinner

Dalene Thomas has agreed to coordinate the dinner this year. It will be held at the Blue Bonnet. The White Fence Farm is now under new management, and the price per person has increased dramatically. Information about the date, time, menu, etc. will be announced soon.

25th Anniversary Dinner

The dinner was held last month at the library. It was well attended, and a good time was had by all.

New Business

By-Laws

Eric Carlson presented several observations and recommendations regarding the RMPL By-Laws. He stated that his comments were in written form, but copies were not available at the meeting.

Eric asked why the By-Laws were not posted on our website. There was general agreement that they should be.

In Article 5, Section 1, it states that Board members shall not bear fiduciary responsibility. Eric feels that Board members almost always have fiduciary responsibility, but that members are generally backed up by D&O insurance.

In Article 7, Section 1, it states that the By-Laws may be amended, added to, or repealed by a ¾ vote of the Board of Directors. Eric stated that most non-profit organizations require a vote of the membership when By-Laws are changed. The By-Laws also

(Continued on page 14)

should stipulate where any changes will be posted (e.g. Scribblings, website, front desk, etc.).

Noting that the last scheduled Board meeting lacked a quorum, Eric suggested that some type of telephone conferencing system be considered for folks who may not be able to attend in person.

The fact that the By-Laws currently require that all Board members must have a Colorado residence should be re-visited. Eric feels that we are missing a great deal of potential and talent by maintaining this restriction.

At the last meeting Paul Lee mentioned that when Sergio left the Board he handed out a document which showed a large number of proposed changes to the By-Laws. Sergio hoped that future Boards would take the recommendations under consideration. A search will be made for a copy of this document.

Eric stated that a search needs to be made to locate the minutes of past Board meetings. These should be organized and stored in an easily accessible location.

Tim Heins suggested that a committee be established to work with Eric to propose needed changes to the By-Laws and report back at a future meeting. John Bloor expressed interest and Don Beuthel's name was suggested.

Ellengail Beuthel

Ellengail announced that she will be retiring by the end of March 2019. She would like her replacement to have a Master's degree in library science, but a clerk with good cataloging experience may be acceptable. Ellengail is looking into places where she might want to advertise for her successor.

Ellengail feels that this new person should work about 20 hours a week. Such a position might be ideal for someone who is retired and looking for a part-time job. She feels that a person with a Master's degree should be paid \$30 an hour, and a person hired as a clerk paid at \$20 per hour.

In addition to outside resources Ellengail plans to place an announcement in *Scribblings*. She also hopes to create an email address where prospective applicants can contact her directly.

A committee would be established to interview applicants. This committee (which would include members of the Board) would also work with Ellengail to develop a list of questions to ask applicants.

After a new person is hired, Ellengail plans to stay on long enough to help the new person learn the ropes and intricacies of the library.

Plumbing Report

Now that the library falls under South Metro jurisdiction regarding utilities, we are required to install backflow valves for both properties. Tonny related a nightmare tale of all the problems, red tape, and communication snags he had to endure to comply with

FIVE-CLUB AUCTION

This Denver philatelic community event is now in its tenth year. Scheduled for Thursday November 15th, the auction is the by-product of the initial collaborative effort of the Cherrelyn Stamp Club and Arapahoe Stamp Club. The auction has now grown to include the Denver Stamp Club, the Aurora Stamp Club, and the South American/Latin Study Group. The purpose of the auction is to unify individual club auctions into one grand auction to attract more bidders, consignments, and realizations. Proceeds from the auction are allocated back to the individual clubs as designated by consignors, with a percentage being returned to the consignor as expressed by the consignor. In the case of the Latin group, their consignments are intended to raise cash to support the Latin groups that will be in attendance at Rocky Mountain Stamp Show 2019.

Consignments need to be submitted to Sergio Lugo by Thursday, November 8th - No late consignments are considered. Auction lots listings will be distributed to club presidents. They, in turn, distribute the list to their respective club members. No mail-in bids are permitted. Previewing begins at 1:00 p.m. on November 15th, with the auction commencing at 2:00 p.m. Depending on the number of consignments, we should be finished by 3:30 p.m. Managed by Sergio Lugo and Glen Shaw, the electronic check-out system has been tested in the past four auctions and deemed a success with check-out completed by 4:30 p.m. Cash and checks only, sorry no credit cards. Realizations to clubs is finalized by 5:00 p.m. with distribution to the individual consignors by 5:30 p.m.

this regulation. And in the middle of it all, our water heater failed! With Tonny's hard work and the work of Capra Plumbing the jobs were completed by the deadline.

The cost was \$1,900 for one building and about \$2,400 for the other, plus the new water heater.

Dasa's Car Repair

Board member Dasa Metzler had an accident in the RMPL parking lot due to some rebar sticking up near the front edge of the lot. The rebar was actually at the edge of our neighbor's parking lot which sits a little higher than ours.

When parking, Dasa's car hooked over the rebar, and it tore a hole in the front bumper when she backed out. She has a \$500 deductible on her auto insurance policy.

A motion was made and seconded to have the library pay the deductible. The motion passed.

OLLI Program Cancellation

Since only three people signed up, the OLLI pro-

(Continued on page 15)

(Continued from page 14)

gram was cancelled for this fall. Hopefully, the spring program will have a better response.

APS Stamp Show in Columbus, Ohio

Jim Kilbane was our official representative at the Columbus show in August. Our booth was well attended, and a few people renewed their membership. APS apparently was so pleased with Jim's work, that we received a \$50 refund on our entry fee.

Form 990 and CPA Review

Our Form 990 has been completed and filed electronically. This is an annual form required by the IRS for all non-profits. It is available for public inspection at IRS.gov. A hard copy is also available at the library.

The CPA Review has also been completed, and the library was found to be compliant in all areas.

Large Lot Auction

David Weisberg discussed the upcoming auction to be held at the library on October 27 beginning at noon. Items will be available for viewing on the Monday prior to the auction.

Dasa asked if we could sell some of the framed stamps/covers that can be found hanging all around the library. The board agreed to allow this, but Dasa should include the value of the frames in determining prices.

Need for Contingency Plan for Key Positions

Tonny noted that due to our aging Board, there is a need to develop contingency plans for key library positions. This plan could include several facets ranging from backup people to fill key positions, to job descriptions for these positions.

Tonny will continue to work on this and report his ideas back to the Board.

Book Purchase Program

Tonny asked about the status of our book purchase program. John Bloor said that this was his area of responsibility and that money was usually appropriated in the budget for this purpose.

John stated that there had been a committee consisting of himself, Jim Kilbane, Dalene Thomas, and Ellengail Beuthel. He further said the he found this committee system cumbersome in that it was often difficult to contact and/or assemble everyone, etc.

Since Dalene is no longer on the Board, a motion was made and seconded to streamline this committee to include only John Bloor, Jim Kilbane and Ellengail Beuthel. The motion passed.

Request by RMPL Member David Reitsema

RMPL member David Reitsema has requested that the library print copies of a gold medal award exhibit he developed on air mail week. Since we lack particulars, it was suggested that Tonny invite David to the next Board meeting to further discuss his ideas.

The meeting adjourned at 6:45 p.m.

Paul Lee, Recording Secretary

NEW MEMBERS

The RMPL is pleased to welcome the following new members who have joined the library during the past two months.

- ◆ Kenneth W. Luke, Evergreen CO - Collects Canada, Latin America, U.S.
- ◆ Chris Kern, Winslow IN - Collects worldwide.
- ◆ Steffen Katie, Sidney NE - Collects U.S.-pre 1940's, Covers, Back of the Book.
- ◆ Ralland A. Walters, Castle Rock CO - Collects U.S.A. Singles and Federal Ducks.
- ◆ William E. Churlik, Burnsville NC - Collects What I don't have, world and world revenues.
- ◆ Garrick Ulrich, Littleton CO - Collects Japan, Russia, Germany

DONATIONS:

The library thrives on the enthusiasm and generosity of its members. The following people made donations to the library during the last two months. We thank every one who has contributed (alphabetized by first name). Here are the people and organizations who contributed during this period.

Attilio B. Catanzano	John Bloor
Bill Bassett	Joseph Gal
Charlie Freise	Kate Bogdewiecz
Cynthia Land	Lyman R Caswell
Dave Hertel	Marol Hansen
David McNamee	Patrick McNally
Don Griffin	Richard Gibson
Donald Kibbe	Rick Klimpke
Erling Fossum	Robert Martin
Ernesto Cuesta	Ron Conovitz
Estate of Elwyn D Batchelor	Scandinavian Collectors Club
Gary McIntyre	Steve Bonowski
Gregory Frantz	Thomas Carnahan
James Bell	Tim Merrick
Jerome Jarnick	William Gum
Jerry Callender	William Jacobi
Joe Lambert	William Knott

For the Record: Next Board Meeting:
Thursday, November 29 , 2018
at 5:00 p.m.



Hours: Monday, Tuesday, Wednesday, Friday, Saturday 10 a.m. - 4 p.m.
Thursday 2 - 8 p.m. Closed Sundays and Holidays. Phone: (303) 759-9921

Meeting times and places sometimes change. It is best to call the library or the club to confirm the place and time. A calendar of reserved club times is kept at the library by the Operations Manager, Dasa Metzler. Clubs should check the calendar regularly and notify Dasa at (303) 322-1231 of any changes or updates. All requests to reserve meeting time and space for philatelically related meetings other than those listed here must be approved and scheduled with Dasa well in advance.

****November 2018****

- November 3 Sat**-Meeting 10:00 a.m.
Scandinavian Collectors Club
- November 3 Sat**-Meeting 1:00 p.m.
TOPICal PHILATELISTSINCOLORADO (TOPIC)
- November 7 Wed**-Meeting 2:00 p.m. (New time)
Aurora Stamp Club
- Second Saturday at the RMPL**
November 10 Sat 9:00 a.m.
Program by Sergio Lugo
"Mourning Covers"
- November 10 Sat**-Meeting 10:00 a.m.
Mexico/Latin America Club
- November 14 Wed**-Meeting 7:00 p.m.
Denver Germany Stamp Club-Joint Meeting with
Austria-Hungary Stamp Club
- November 15 Thu**-2:00 p.m. Special Event
Multi-Club Auction.
- November 15 Thu**-Meeting 7:00 p.m.
Denver Postcard Club
- November 17 Sat**-Meeting 9:30 a.m.
Denver Young Collectors
- November 17 Sat**-Meeting 9:30 a.m.
Post Mark Collectors-Colorado Chapter
- November 17 Sat**-Meeting 1:00 p.m.
Colorado Postal History Society
- November 18 Sun**-Meeting 1:00 p.m.
Great Britain and Colonies Collectors Club
- November 21 Wed**-Meeting 7:00 p.m.
Arapahoe Stamp Club
- November 22 Thanksgiving Day**
RMPL CLOSED
- November 27 Tue** - Meeting 7:30 p.m.
Rocky Mountain Stamp Show Committee
- November 28 Wed**-Meeting 11:00 a.m.
Denver Stamp Club

****December 2018****

- December 1 Sat**-Meeting 1:00 p.m.
TOPICal PHILATELISTSINCOLORADO (TOPIC)
- December 2 Sun**-Holiday Party 1:00 to 4:00 p.m..
Scandinavian Collectors Club
- December 5 Wed**-Holiday Party 2:00 p.m.
Aurora Stamp Club
- Second Saturday at the RMPL**
December 8 9:00 a.m.
Program by Travis Searls
"Liberia"
- December 8 Sat**-Meeting 10:00 a.m.
Holiday Party (potluck)
Mexico/Latin America Club
- December 8 Sat**-Meeting 11:30 a.m.
Holiday Party (potluck)
Rocky Mountain Aero/Astro Philatelic Club
- December 12 Wed**-Meeting 7:00 p.m.
Denver Germany Stamp Club-Joint Meeting with
Austria-Hungary Stamp Club
- December 13 Thu**-Meeting 2:00 p.m.
Cherrellyn Stamp Club
- December 15 Sat**-Meeting 9:30 a.m.
Denver Young Collectors
- December 16 Sun**-Meeting 1:00 p.m.
Great Britain & Commonwealth Collectors Club
- December 19 Wed**-Meeting 7:30 p.m.
Arapahoe Stamp Club
- December 24 & 25 Christmas Holidays**
RMPL CLOSED
- December 26 Wed**-Meeting 11:00 a.m.
Denver Stamp Club
- December 31 and January 1 New Year's Holidays**
RMPL CLOSED