

# Scribblings

...from the Rocky Mountain Philatelic Library



Ellengail Beuthel, Librarian...

Vol. 25 - No. 2  
www.rmpldenver.org

2038 South Pontiac Way, Denver, CO 80224-2412  
(303) 759-9921

March/April 2017  
Email - rmpl@qwestoffice.net

## IN THIS ISSUE

*Mail Call*  
by Jeff Modesitt ..... 1



*President's Letter*  
by John Sinski..... 2

*RMPL Special Collections: The Scandinavian Collectors Club Library* by Jeff Modesitt..... 4

*A Few Highlights of the SCCL shelves*..... 6

*But, Did Anyone Write to Denver?* by Charles J. LaBlonde CPhH, FRPSL .... 7



*New on the Shelves* ..... 9

*CHERPEX Stamp Shows and the Cherrelyn Stamp Club*  
by Chuck James ..... 12

*A Philatelic Rebus*  
by Tom Slemons ..... 13

*2016 RMPL Financial Reports and 2017 Budget*  
by Tim Heins ..... 13



*Second Saturday Programs* ..  
by Pedersen and Lugo..... 14

*New Members* ..... 15

*Donations*..... 15

*Board Meeting Summary* .. 15

*Activities Calendar* ..... 16

# MAIL CALL

By Jeff Modesitt

Members of Rocky Mountain Aero/Astrophilatelists Club recently visited the Smithsonian's traveling exhibit *Mail Call* at the Wings Over the Rockies Air and Space Museum. The exhibit moved on at the end of January, but, for those who were able to make it out to this special presentation, the experience provided insights about how the military postal system works, various types of military mail, and the transportation methods employed.

The time period covered was from 1775 to the present with emphasis on the role of mail during periods of war. The exhibit was broken into four primary sections: Moving the Mail, The Mail Piece, Morale, and a final section on Getting Involved.

In the many boxes of covers available for purchase at the RMPL, there are any number of covers with Forces postmarks, censor markings and closure tapes. After reading some of the information about moving the mail during wartime, those covers will never receive the cavalier treatment that they once might have from some of the group. Just imagine what is entailed in delivering mail from a submarine or operating a Field Post Office during a military campaign.

One of the most interesting pieces was on the 6888th Central Postal Directory Battalion. "It was the only unit of African-American women, in the still segregated U.S. Army, to serve overseas during World War II. The women found mail stacked to the ceiling of the postal facility when they arrived in England in early 1945. The battalion worked twenty-four hours a day, seven days a week, often with French civilians,



(Continued on page 3)

# Scribblings

Newsletter of the  
**Rocky Mountain Philatelic Library**

2038 So. Pontiac Way  
Denver, CO 80224  
Phone: (303) 759-9921  
email: [rmpl@qwestoffice.net](mailto:rmpl@qwestoffice.net)  
Hours: 10 a.m. to 4 p.m. daily,  
Thursday, 2 p.m. to 8 p.m.  
Closed Sundays & Holidays

### Editor

Jeff Modesitt ([jeffmcolorado@gmail.com](mailto:jeffmcolorado@gmail.com))

### Copy Editors / Proofreaders

Don Beuthel  
Ellengail Beuthel  
John Bloor, John Sinski  
Steve Schweighofer

### Librarian

Ellengail Beuthel

*Scribblings* is published bimonthly by the Rocky Mountain Philatelic Library. The RMPL is a chartered Colorado nonprofit corporation and is an IRS-designated 501(c)(3) charitable organization. Membership subscriptions over that for the regular membership, and donations of appropriate philatelic materials, are deductible for US income tax purposes. The Library is a volunteer organization. Financial donations, philatelic books, stamps, supplies and donations of your time, are welcome.

A basic membership with the RMPL is \$25 per year, and includes checkout privileges and *Scribblings*. Call for more information.

Knowledge is better when shared. Consider writing an article for *Scribblings* about your favorite philatelic topic.

President..... John Sinski  
Operations Manager ..... Howard Benson  
Vice President ..... Jim Kilbane  
Corresponding Secretary ..... Bill Plachte  
Recording Secretary ..... Paul Lee  
Treasurer ..... Tim Heins, CPA

Directors: John Bloor, Steve McGill,  
Dalene Thomas, David Weisberg.  
Director Emeritus: Don Dhonau.  
Ex-officio member, Ellengail Beuthel.

Officers and Directors may be contacted through the RMPL.

Web page — [www.rmpldenver.org](http://www.rmpldenver.org)

## The President's Message

The year started off fast with three new members in the first week of January, but that was it through the first week of February.

7070 Asbury (back of 2048) has been greatly improved for interior appearance. Full carpeting has been installed in the old garage area. The large window was framed and a blind was installed. Some spackling and paint greatly improved the walls. New metal shelves were assembled and filled with catalogs and periodicals.

Some pictures of the facility are reproduced below, but, better yet, ask to go over and check it out.

John Sinski  
RMPL President



### ***Scribblings* Articles**

**If you care to share your philatelic expertise and experience with the membership, feel free to submit an article! Articles should be sent in Word format to Jeff Modesitt at: [jeffmcolorado@gmail.com](mailto:jeffmcolorado@gmail.com) (phone 720-624-9024)**



Fig. 1. The 6888th Central Postal Directory Battalion working with French civilians



Fig. 3. A Salvation Army volunteer writes a letter for an injured soldier.

(Continued from page 1)

to provide mail to military personnel in Europe (Fig. 1), making a valuable contribution to victory.”

Another clear takeaway from the exhibit was, that from inception of our military mail services, the content was generally the same regardless if the letter was written in 1775 or 2015. The big changes involved how the letter was delivered.

Military mail from or to friends and family can make a difference in moral and the ultimate performance of those in the military. One soldier’s wife writing during the Civil War set high goals: “This is the fourth letter I have written you and I have received four from you and I would be glad to receive one every day or two if I could for I am always glad to hear from you.” (Rachel J. Walters to her husband, October 7, 1862).

An unusual aspect of the exhibit was the realization that, despite the emphasis on writing letters, there was also a downside to having too many letters heading home. The admonition to use V-Mail is illustrated by Figure 2 and underscores the complexity of making the military mail system effective. Too much mail and everything gets bogged down. Too little and morale drops dramatically.

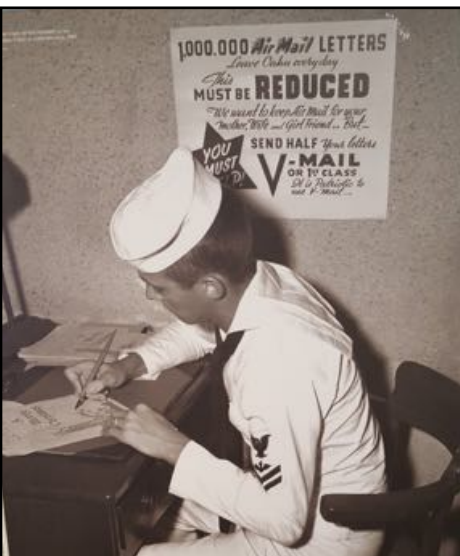


Fig. 2. “Send half your mail by V-Mail” is the admonition from Oahu, Hawaii during World War II.

Poignant images throughout the exhibit attested to the importance of staying in touch. “Getting involved” didn’t just mean writing, but sometimes writing for another person. Figure 3 is one of

several examples of the dedication members of non-military organizations who risk their lives in war zones to make sure those that can’t physically write are given the help they need to stay in touch with their family and friends.

To say that the setting for the exhibit was spectacular would be an understatement. On one side of the walkway, there was a series of presentations on important aspects of military mail. On the other side, viewed from above, was a



Fig. 4. Jeff Modesitt, Steve McGill, Richard Truly, Steve Nadler, Rich Palestro, and Bill Crabbs stand in front of a commemorative display listing all of America’s astronauts, including our de facto tour leader.

panorama of the Museum’s collection of aircraft and rockets, including an F-111 Aardvark, F-104 Starfighter, and a B-1A bomber. The B-1A is a huge, sinister plane that evoked a good deal more attention from our group than the *Star War*’s X-Wing Starfighter just a few feet away. The juxtapositioning of an exceptional collection of war planes and the *Mail Call* exhibit made us all realize the importance of efficient communication for those in the military.

The afternoon was also made special by the presence of Richard Truly (Fig. 4), a man of many talents, but notably a former astronaut and Director of NASA. As de facto tour guide, he helped explain the importance and roles of many of the Wings Over the Rockies aeronautical exhibits.

All quotations are from the *Mail Call Exhibit* or from the Postal Museum website: <https://postalmuseum.si.edu/mailcall/index.html>

# RMPL Special Collections

## The Scandinavian Collectors Club Library

By Jeff Modesitt

*This article is the first of a multipart series that will describe in detail many of the RMPL's special collections. These collections are available to members and guests, but in all cases require an appointment to access the material. Should you be interested in accessing material from any of the special collections, please contact the library at 303-759-9921.*

The purpose of this article is to introduce RMPL members to a wonderful resource that is available to them in the form of the SCCL Library (SCCL) and its literature holdings. The SCCL is one of a number of special collections housed in the RMPL's two library buildings. All the SCCL holdings can be found in two rooms in the main facility and represent one of the two best collections of its type in the North America. What follows is a little background on how it all came together, followed by a sampling of some of the SCCL holdings.

### A Good Deal for Both Parties

During 1997, then SCC President, Roger P. Quinby approached Donald G. Beuthel, then President of the RMPL, about the possibility of transferring the SCCL's holdings to the RMPL, essentially establishing a separate library within a library. Benefits for both organizations were apparent: the SCCL would have a "permanent" location for its holdings and a ready staff of volunteers from the local SCC chapter who could serve it. The infant (at that time) RMPL would gain the prestige of housing a major national society specialty library and the contents of those holdings would be immediately (well, almost) available to RMPL members!

Negotiations began and a Memorandum of Agreement between the SCC and RMPL was signed in March 1998 by both parties in which the following three major provisions were to occur: (1) SCCL's holdings would be relocated to the RMPL, but the SCC would retain legal ownership of those holdings, (2) SCCL holdings would remain at RMPL indefinitely, and (3) SCCL holdings would be located and segregated in a separate room at RMPL.

### The SCCL's First Librarian at the RMPL

At the time the SCCL holdings were relocated to Denver, Dr. Stuart Silverberg, a member of SCC Chapter 27, was appointed by SCC to serve as SCC Librarian. The RMPL gave a large room to SCCL for its holdings, but it was apparent that it needed considerable reconfiguring to accommodate them. Enter Gregory Frantz, another member of Chapter 27, who was a carpenter and custom cabinetry maker by profession. Greg immediately went to



work and built book shelves throughout the SCCL room. For those of you who have seen this room, a "labyrinth" of shelving winding its way around and into the far reaches of the room would, perhaps, be an apt description.

At first, there was plenty of space to organize the holdings onto these shelves with room to spare for future expansion. Stuart worked diligently at organizing the holdings (Fig. 1) and came up with several practical innova-



Fig. 1. An exceptional collection of Scandinavian specialized catalogs is a foundation of the library.

tions that are still in place today. Stuart ably functioned as the SCC Librarian for more than four years and was responsible for keeping the collections organized, new acquisitions indexed, mailing out requested materials, and other day-to-day tasks. But by mid 2002, it became apparent that his developing health problems were affecting his ability to continue in that capacity. Stuart retired as Librarian and the Librarian functions were taken over by six



*Fig. 2. Paul Albright and Roger Cichorz display the Carl Pelander Award listing the six SCC "librarians." The Pelander is the highest service award bestowed by the SCC national organization.*

"Library Volunteers" (who are also all RMPL members: Paul Albright, Roger Cichorz, Gregory Frantz, Jim Kilbane, Howard Benson and Jeff Modesitt).

### SCC Southern California Adds to Collection

About that time, the SCC Southern California Chapter decided to disband its own Library and donated the entire holdings to the SCCL. A rental truck full of boxes of books, articles, and periodicals arrived at the RMPL, and the contents eventually added another 75% to the total of the SCCL holdings. These arrived unsorted and created quite a challenge for the fledgling library and its volunteers.

Fortunately, this is about the time Roger Cichorz retired and gravitated to the SCCL on almost a fulltime basis --none too soon, as the SCCL space needed rapid processing before anything could be accessed. By early 2004, Roger and friends, especially Paul Albright, completed the preliminary sorting of the additional donations from California.

### Expanding to a Second Room

The library has continued to grow and the RMPL graciously provided another room (Fig. 3) to house the expanding holdings. Here, the periodicals, show catalogs, and much of the exhibition materials are housed. The SCCL does not rely on RMPL staff to catalog its collection or send out material requested by other libraries or SCC members. A catalog of the holdings is constantly being updated and is available on the SCC website at: <http://www.scc-online.org/library>. In addition, the SCC's catalog is also incorporated into the APS/APRL Union Catalog.



*Fig. 3. The second room holds primarily periodicals and auction catalogs, as well as Scandinavian memorabilia such as this postal carrier's jacket.*

In 2012, the SCC gave the Carl Pelander Award to the SCC Library Committee. Figure 2 shows Paul Albright and Roger Cichorz holding the plaque which now hangs in the library.

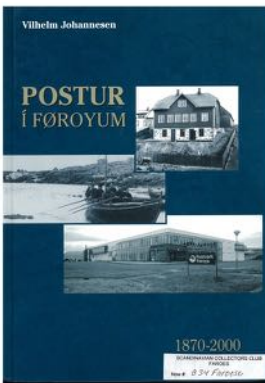
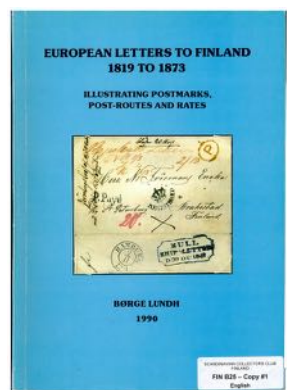
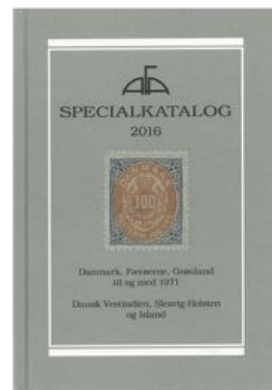
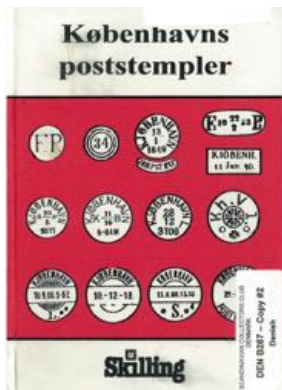
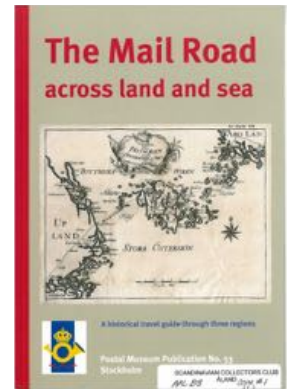
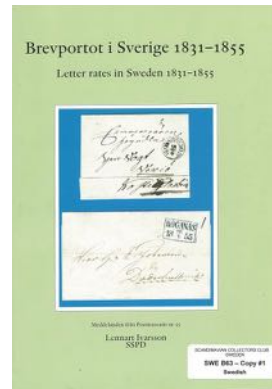
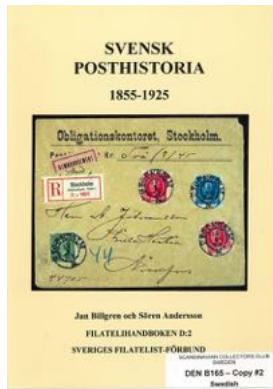
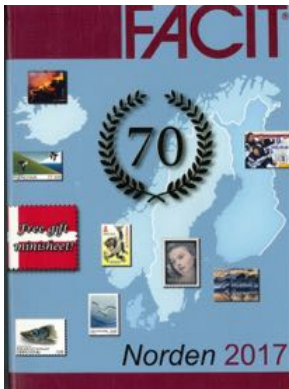
Funding for the SCCL is provided in large part by the efforts of Roger Cichorz and generous donations of philatelic and related materials. Roger has very successfully organized and staged regular auctions of the SCCL's excess material. The revenue from these auctions has allowed the SCCL to be self-supporting. It has also allowed the SCCL and the parent national society to show their appreciation for the space provided by making yearly contributions to the RMPL.

Currently, the SCCL's philatelic and related holdings consist of:

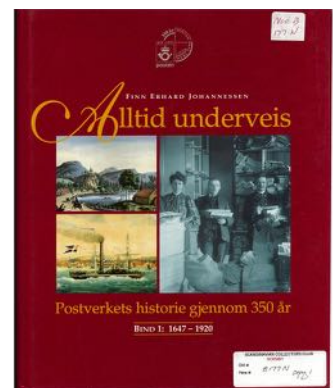
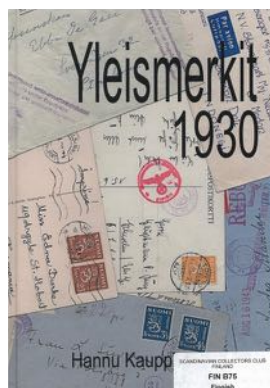
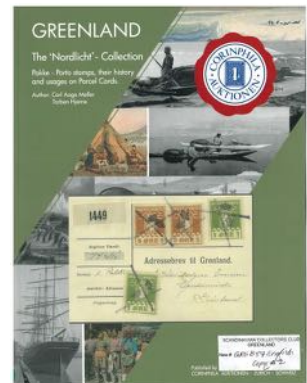
- ◆ more than 2,000 books (hardbound, softbound, and paperback) primarily related to Scandinavian and Nordic countries ("S/N"), including Denmark, Sweden, Finland, Norway, Greenland, Iceland, Faroes, Åland, and the Danish West Indies);
- ◆ several thousand philatelic periodicals (extended runs of 65 journal titles, 20 still active);
- ◆ 400 philatelic auction catalogues (primarily paperbacks, extended runs from seven major auction firms);
- ◆ 500 philatelic exhibition and show catalogues (primarily paperbacks);
- ◆ 400 softbound and hardbound stamp catalogues (general S/N areas and specialized, specific to individual S/N countries, primarily extended runs of *Facit*, *SFF Specialkatalog*, *Norgeskatalogen*, *Norma/LaPe*, and *AFA*).

Some highlights of the holdings are illustrated on the next page.

# A FEW HIGHLIGHTS OF THE SCCL SHELVES



Whether you collect Sweden, Denmark, Åland or the Faroes, the SCCL has everything from basic catalogs to travel guides and a whole lot in-between. A full series of prime reference catalogs such as Facit and AFA, especially the Danish Specialized edition, are some of the library's often used books. Regardless of the philatelic field, there is likely to be material that you can use, including media presentations.



## But, Did Anyone Write to Denver?

By Charles J. LaBlonde CPhH, FRPSL

Recently I was digging through my World War II Swiss holdings and I noticed that around 65 percent of my letters from Switzerland to the USA were addressed to New York City. Upon short reflection this did not surprise me. At the onset of war much of the financial business of the world was probably focused in Switzerland and the USA.

The next question that entered my mind was “Did any one in Switzerland write to anyone in Denver, Colorado, during World War II?” If so, who and why? After digging deeply I did find a total 10 letters to Denver, to five different addresses, dated between 1940 and 1945. Four of the letters seem to be commercial and 6 personal, although it is difficult to be certain with only an address to go by.

I offer some samples here, in the hope that our readers might recognize something about one or more of the addressees.



Fig. 1. Sent from a firm in Schoenenwerd, Switzerland October 1940 to the Gates Rubber Company, arriving November 23, 1940.

It was no surprise to find early wartime correspondence from Switzerland to the Gates Rubber Company. Surely the company had worldwide customers at that time. Figure 1, from a firm in Schoenenwerd that built machine tools, is dated October 1940 and arrived Denver, Terminal Annex Office, on 23 November 1940. At that time the postage was 30 centimes for the basic letter plus 60 centimes airmail surcharge. Great Britain Censor 3709 had a look at the letter as it passed through Bermuda on the Pan American Airways Clipper service.

Figure 2 is another Gates letter from a Schaffhausen machine tool company, dated 22 August 1941. Note that the Swiss airmail postage had increased by 10 centimes. Arrived Denver 2 September 1941. Bermuda Censor Number 517, with a very different closer than the letter above.

That the Gates letters are quite early in the war is understandable. Once Switzerland was surrounded by the



Fig. 2. Sent August 22, 1941, this letter required 10 centimes more postage than the Figure 1 letter and bears a different censor tape.

Axis it would have been impossible for the Swiss to carry on business as usual with a US company.

I noted above the focus of world banking business to be in New York, but Figure 3 is a registered letter of 15 August 1941 from the BANQUE COMMERCIALE DE BALE (in Basel) to The Federal Postal Employees Association in Denver. This sounds to me as if it could have been some sort of postal union. Possibly the union had some of its funds on deposit in Switzerland? If anyone knows of this organization, please let me know.

From a postal history perspective the bank letter is quite nice. Postage was 30 centimes for the basic letter (0 to 5 grams), 70 centimes airmail surcharge and 30 centimes for registration. Bermuda Censor Number 1604 examined the letter. (Note that the GB censor closers were not large enough for the standard European envelopes in use at the time and brown tape was required to complete the job). The red number on the reverse (32399) is a characteristic of the Bermuda Censor Office during WWII.

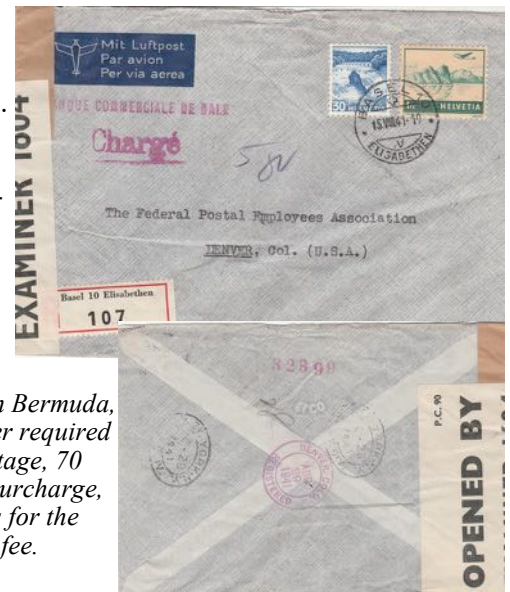


Fig. 3. Censored in Bermuda, this registered letter required 30 centimes postage, 70 centimes airmail surcharge, and 30 centimes for the registration fee.

The letter passed through New York on 28 August 1941 and arrived in Denver on 29 August 1941 (via American Airlines?).

and 17 May 1945 all to a Mister Joe Brandeis from writers of the same name. This appears to be an ongoing family correspondence. Does this name sound familiar to anyone?

Figure 6 left Zürich on 28 December 1943. The air-mail postage was still one franc but the censorship had

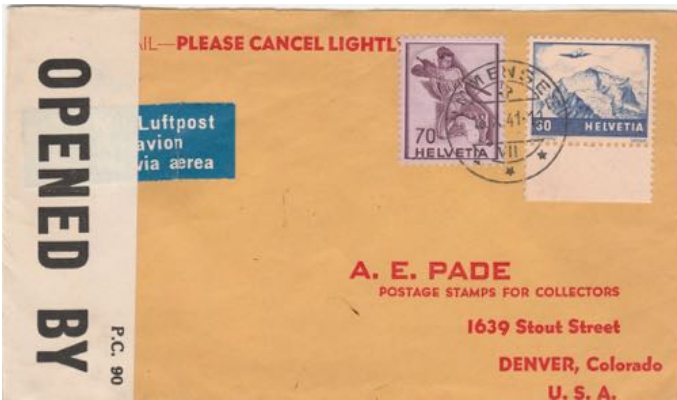


Fig. 4. This A. E. Pade cover is considered by the author to be one of his treasures. See the March/April 2013 Scribblings for the full story.



Fig. 6. This letter sent on December 28, 1943 was censored in Berlin, as well as by the British in Bermuda and the U.S. in New York.

One of my treasures, shown as Figure 4, is a letter of 18 October 1941 to the Denver stamp dealer, A.E. Pade. The full story of this man was told in “Scribblings” of March/April 2013. Postage is the standard 1 franc and the GB Bermuda censorship by Number 6179 is as expected. Wouldn’t it be fun to know what was in this envelope? Payment for stamps sold? Return of approvals? A letter about how the war would prevent any further contact?

changed significantly as the war progressed. Germany censored the letter in Berlin as noted by the Ab marking and the blue record number 790. The British examined the letter in Bermuda (I.C. and Number 4240). The USA examined the letter in New York, Censor Number 8475. To conclude, Figure 7 is another Brandeis letter of 17 May 1945, after the war in Europe was over. Note, there is no German censorship and no GB censorship. The letter was sent via GB (Swiss pencil notation “via Algeterre”) and censored by the USA in New York, Number 5253.

In addition to business there was some personal correspondence during the war. Figure 5 is an example of this, a letter of 9 July 1942 from a lady in Lausanne to a Mister Egon Doernberg. Note the letters I.C. on the GB Bermuda censor label. At the end of 1941 GB assigned codes to all of its worldwide censor stations. I.C. was Bermuda and I.E. was Trinidad. Of this same correspondence I have one other letter, dated 18 January 1941. Does Mr. Doernberg ring a bell with anyone?



Fig. 5. Personal correspondence sent July 9, 1942 from Lausanne to Denver

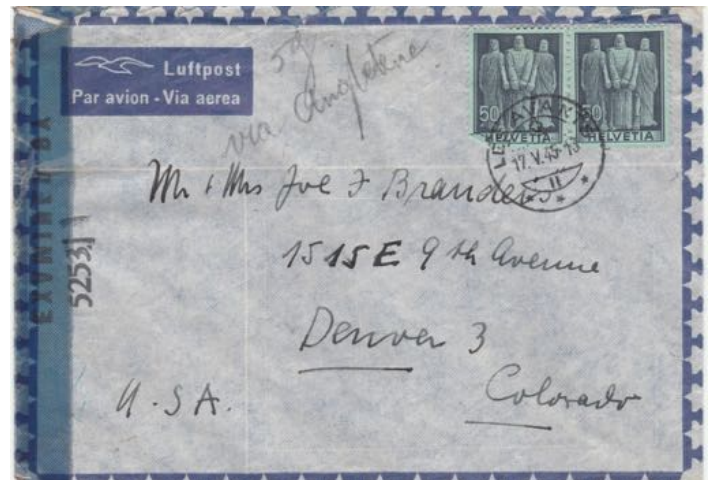


Fig. 7. Sent shortly after the war in Europe ended, there are no German or British censorship marks—only American.

I can report one other correspondence from Switzerland to Denver of which I have four examples, dated 3 December 1943, 27 December 1943, 28 December 1943

(NOTE - I do have two WWII letters to Colorado Springs. In each case I tried to contact the current address-ee with hopes of obtaining some history, but no luck.)



# NEW ON THE SHELVES

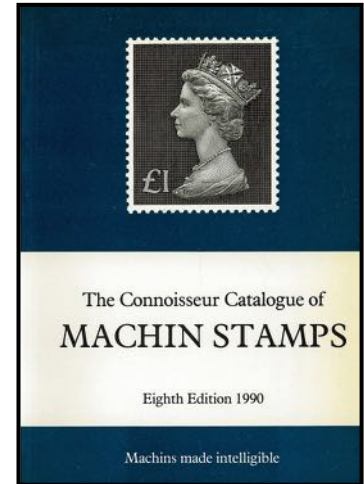
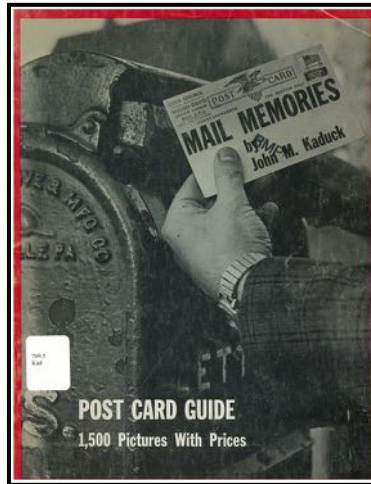
## UNITED STATES

**First-Class, Third-Class, and Fourth-Class Bulk Mailings: Permits, Preparations, Regulations (1982)**, published by the United States Postal Service



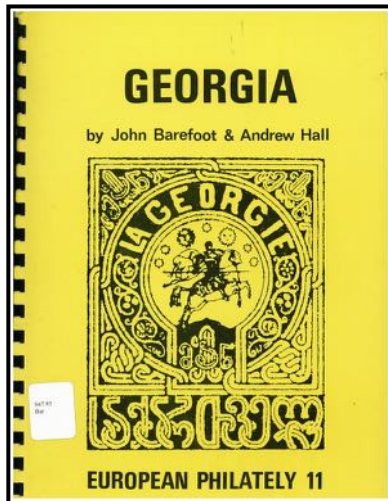
**Georgia (European Philately 11)**, by John Barefoot & Andrew Hall

**German Occupation Stamps of World War I and World War II**



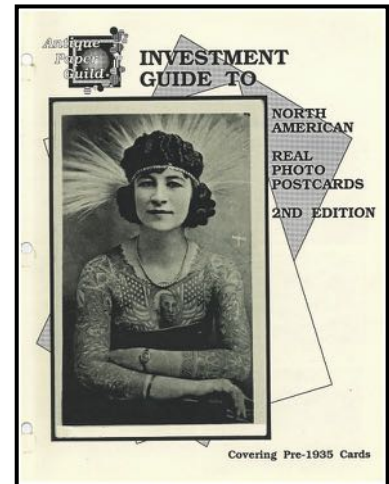
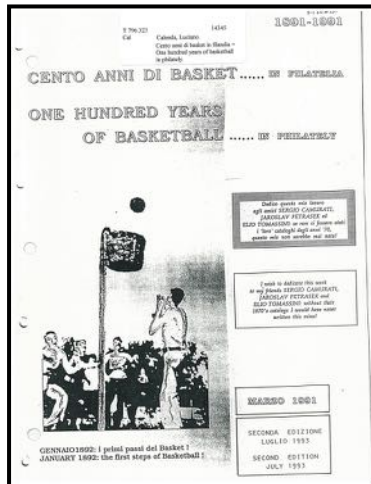
## AUSTRALIA and OCEANIA

**Standard Catalog of Australia Stamps, 2001 Edition**, published by Krause-Minkus



## TOPICAL

**Basket e Affrancature Meccaniche, 2nd Edizione (1988)**, by Luciano Calenda

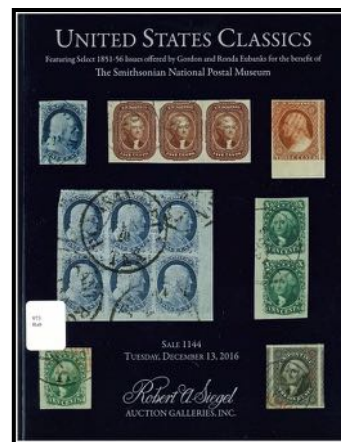
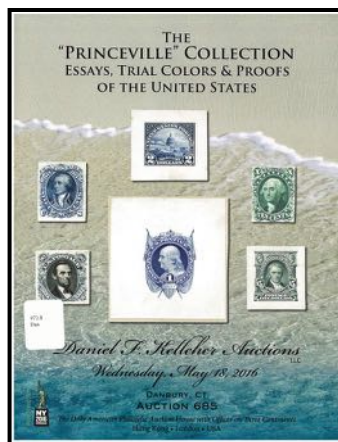
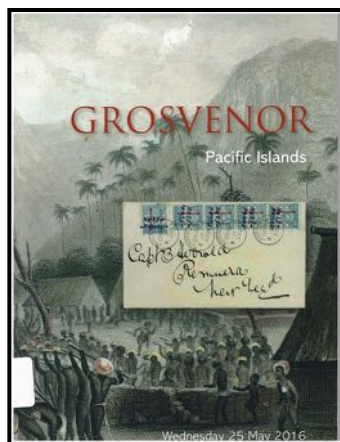
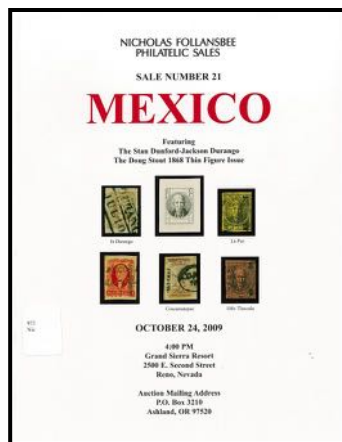


## EUROPE

**The Connoisseur Catalog of Machin Stamps**, Eighth Edition (1990)

## POSTCARDS

**Investment guide to North American Real Photo Postcards covering Pre-1935 Cards**, 2nd Edition, by Robert Ward



**Mail Memories: Pictorial Guide to Postcard Collecting**, by John M. Kaduck

---

**Gems of Philately**, catalog for a John W. Kaufmann auction November 1978

---

**AUCTION CATALOGS**

---

**Gems of Philately**, catalog for a John W. Kaufmann auction December 1980

---

**Auction of Pacific Islands Postage Stamps and Postal History**, catalog for a Grosvenor auction May 2016

---

**Great Britain Postage Stamps and Postal History**, catalog for a Grosvenor auction April 2016

---

**British Empire and Foreign Countries: Postage Stamps and Postal History**, catalog for a Grosvenor auction September 2015

---

**The Hanover Collection of Superb-Quality United States Stamps Part One: 1845-1898 Issues**, catalog for a Robert A. Siegel auction April 2016

---

**British Empire and Foreign Countries: Postage Stamps and Postal History**, catalog for a Grosvenor auction September 2016

---

**Mexico Featuring the Stan Dunford-Jackson Durango and the Doug Stout 1868 Thin Figure Issue**, catalog for a Nicholas Follansbee auction October 2009

---

**Chicagopex Auction 2016**, catalog for a Regency Superior auction November 2016

---

**Outstanding United States Stamps Featuring the Irwin Weinberg Inventory**, catalog for a Robert A. Siegel auction November 2016

---

**Corinphila Briefmarken-Auktion: Schweiz Fürstentum Liechtenstein**, catalog for a Corinphila auction June 2016

---

**The Pre-New York 2016 Collector's Series Sale Featuring United States, U.S. Revenues, Canada, Cayman Islands, General Foreign, [and] Collections**, catalog for a Spink auction May 2016

---

**Falkland Islands: the "Bougainville" Collection**, catalog for a Grosvenor auction September 2016

---

**Flagship Series Featuring the Harold B. Nogle Plate Numbers, "Paul" Collection – Final Offerings of United States, "Conti" Collection of Premium United States**, catalog for a Kelleher auction September 2016

---

**The "Princeville" Collection: Essays, Trial Colors & Proofs of the United States**, catalog for a Daniel F. Kelleher auction May 2016

---

**Flagship Series Featuring the "William John" Collection of Canada, Great Britain, France & Monaco and the Gillander Collection of British Mail to the Orient, United States & Hawaii**, catalog for a Kelleher auction September 2016

---

**Rare Stamps & Postal History of the World**, catalog for a Cherrystone auction June 2016

---

**Republic of Cuba: An Exceptional Offering of Stamps and Postal History**, catalog for a Robert A. Siegel auction November 2016

---

**The SESCAL sale**, catalog for a Schuyler Rumsey auction September 2016

---

**Sets, Singles, Postal History & Collections of the World**, catalog for an H.R. Harmer auction May 2016

---

**Sets, Singles, Postal History & Collections of the World**, catalog for an H.R. Harmer auction October 2016

---

**Siegel Rarities of the World**, catalog for a Robert A. Siegel auction May 2016

---

**Treasures of Philately: United States & Possessions: United States and Possessions, the Irwin Weinberg Inventory**, catalog for a Robert A. Siegel auction November 2016

---

**United States, British North America, Commonwealth, and French Postal History and Foreign**, catalog for a Harmer's auction June 2016

---

**United States Classics Featuring Select 1851-56 Issues Offered by Gordon and Ronda Eubanks for the Benefit of the Smithsonian National Postal Museum**, catalog for a Robert A. Siegel auction December 2016

---

**United States Independent Mails: The Dr. Carmen A. Puliafito Collection**, catalog for a Robert A. Siegel auction May 2016

---

**United States Stamps Featuring an Important Collection of Modern Errors**, catalog for a

Robert A. Siegel auction December 2016

---

**William H. Gross Collection: Hawaii, Important Postage Stamps and Postal History**, catalog for a Robert A. Siegel auction May 2016

---

**The Winter Sale Featuring Many Items from the Daniel Curtis Collection**, catalog for a Michael E. Aldrich auction March 2013

---

**Worldwide Philatelic Auction, the Property of 108 Owners, Including the Inventory of Connecticut Cinderellas, the Robert C. Anderson Collection of Guan, the Herbert Allen Frees, Jr. Collection of Hawaii and Danish West Indies, and a Selection of Dorothy Knapp Covers**, catalog for a Harmer-Schau auction January 2016

---

**Worldwide Stamps and Postal History Featuring the Irwin Weinberg Inventory**, catalog for a Robert A. Siegel auction November 2016

---

**Worldwide Stamps and Postal History: The Dr. Hawkins Valiant Maulding Collection of Belgian Congo Stamps and Postal History, Specialized Canada from the Collection of Prof. Shaul Ladany, and an extensive Selection of Lithograph Issue Postal History of India**, catalog for a Robert A. Siegel auction June 2016

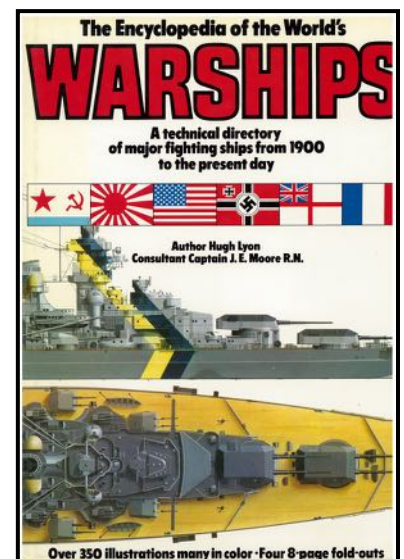
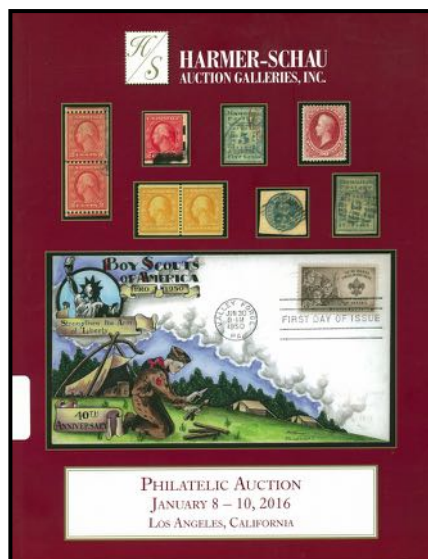
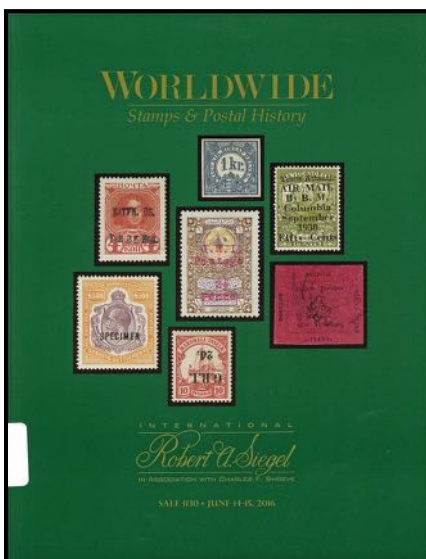
---

## NON-PHILATELIC

---

**Encyclopedia of the World's Warships: A Technical Directory of Major Fighting Ships from 1900 to the Present Day**, by Hugh Lyon

---



# CHERPEX Stamp Shows and the Cherrelyn Stamp Club

By Chuck James

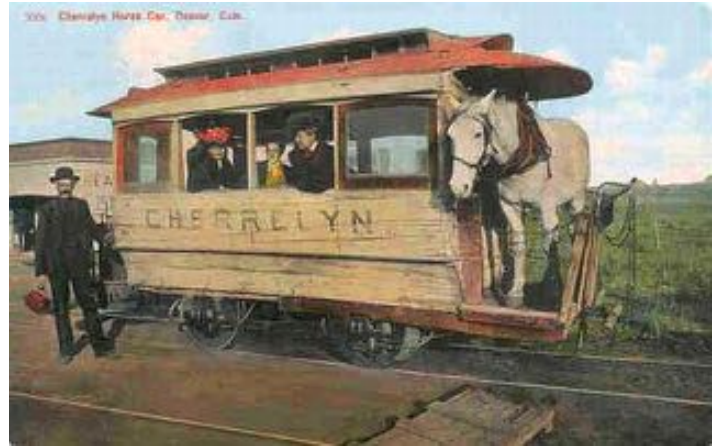
At a recent meeting of the Cherrelyn Stamp Club, it was suggested that an article be prepared for the RMPL Scribblings to provide an overview of the yearly CHERPEX show and the Cherrelyn Stamp Club.

The CHERPEX stamp show has been a yearly event in Denver for 42 years. The show averages 14 dealers with some coming hundreds of miles. The collage of pictures below shows some of the dealers at the CHERPEX 2016 show. The dealers covered almost all philatelic subjects (US, Foreign, Covers, Post Cards and Supplies). One group of notable attendees were those at the youth tables hosted by the RMPL. Our club appreciates the RMPL's participation and their efforts promoting the hobby.

The September 2016 show at the Jefferson County Fair Grounds had over 100 visitors with some also coming hundreds of miles to attend. Parking and admission were free. The next scheduled show is September 22-23, 2017 at the Jefferson County Fair Grounds. It would be great if more people would come to the show. There is something for everyone.

Club members prepared eight one-frame exhibits for the show. The exhibits reflected the many varied interests the members have and the broad aspects of the philatelic hobby/study.

The Cherrelyn Stamp Club was founded in Englewood, Colorado in 1939 which makes it the second oldest active stamp club in



*The Cherrelyn trolley: The horse would pull the car up the hill on Broadway in Englewood and ride it back down.*

the state. The club name "Cherrelyn" comes from the name of the Englewood horse drawn trolley used from 1883 to 1910.

Currently there are 15 members who meet at 2:00 PM the second Thursday of the month at the RMPL. Club President is Eric Carlson, Treasurer-Tonny Van Loij, Secretary-Jim Kilbane, Show Coordinators-Carol Gent and Eric Carlson.

The Cherrelyn Stamp Club wants to give a very special thank you to Bob Gross for being club Treasurer for 60 years and the longest-time member of the club. Thank you Bob from all your fellow club members for your service through the years.



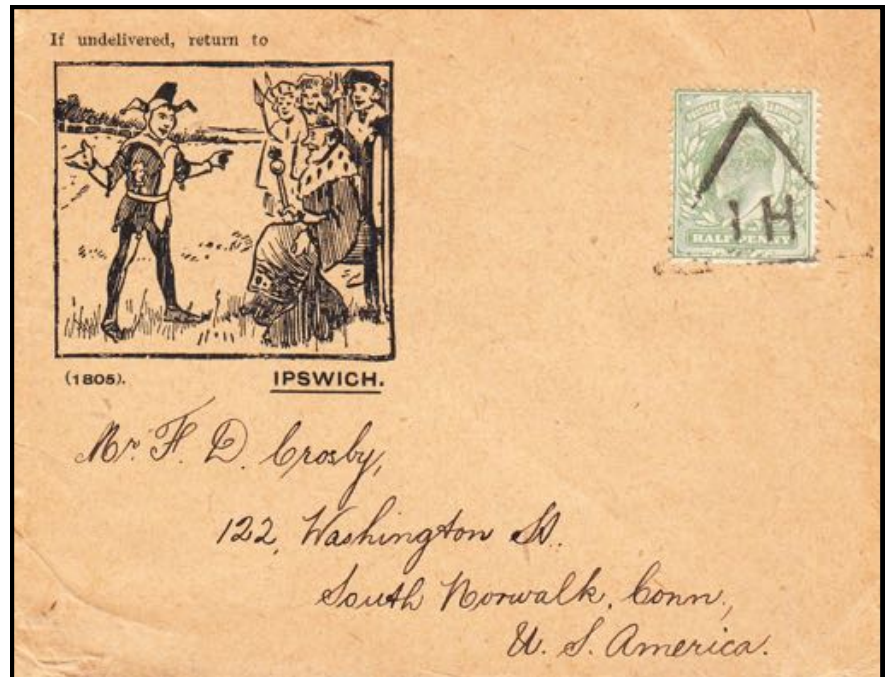
# A PHILATELIC REBUS

By Tom Slemons

*Editor's note: A version of this article was previously published by the Great Britain Collectors Club in its October, 2017 issue of The Chronicle.*

A **rebus** (/ˈrē-bəs/) is an allusional device that uses pictures to represent words or parts of words. It was a favorite form of heraldic expression used in the Middle Ages to denote surnames. This one supplies a return address.

This delightful cover has had a home in my collection for many years and until recently I had never seen another. At STAMPEX in London last September a dealer friend had one at his stand. I asked if he knew anything about it. He did not, so I explained it. Your challenge is to see if you are as clever as the postman! Could you have returned it to the sender had it not been delivered? No fair asking a member of the GBCC!



*Send your guess as to the correct return address to the editor. The answer will be in the next Scribblings, as well as a list of those who answered correctly.*

## 2016-RMPL Financial Reports and 2017 Budget

By Tim Heins

### 2016 RMPL Financial Reports

The finances of the RMPL for the year 2016 were presented to the Board of Directors at its January 19, 2017 meeting. During 2016, income to the RMPL exceeded expenses by \$45,535. During 2015, the same figure was \$50,416. The total income for 2016 was \$104,195 compared to \$113,049 for 2015. The principle sources of income during the year were auction sales, member dues and cash donations. Many 2016 cash donations were memorials in honor of Ron Mitchell. Auction sales and stamp sales for 2016 had decreased from the amounts in 2015. The mutual funds owned by the RMPL increased in value during 2016.

Total expenses for 2016 were \$58,759 compared to \$62,533 for 2015. The largest category of expenses was Recurring Building expenses (i.e. heat, light, water, etc.) of \$16,898. Other major 2016 expenses were Operations (i.e. Scribblings, office expenses, etc.) of \$10,555 and Technology (i.e. computers, copiers, etc.) of \$11,348. Expenses for 2016 included the costs of RMPL's sponsorship of a table at the NY 2016 exhibition and the cost of an au-

dit by a CPA firm. During 2015 there was interest expense of \$4,682 on the mortgage on 2048 Pontiac Way. The mortgage was retired in 2015.

In addition to expenses the following assets were purchased during 2016: nine tables for the meeting room in the annex, additional shelves for the storage portion of 7070 Asbury, four new desk top computers to replace old computers in the library and a new cash register. Cash in banks at December 30, 2016 totaled \$96,924 and the value of the investments in mutual funds was \$128,537.

Detailed financial reports for 2016 will be posted in the glass case in the entryway of RMPL. Questions can be addressed to Timothy Heins, Treasurer at [rmpl@qwestoffice.net](mailto:rmpl@qwestoffice.net).

### 2017 Budget

A draft of a budget for 2017 was presented to the Board at its January 19, 2017 meeting. In the near future this budget will be adjusted and adopted at the March Board meeting.

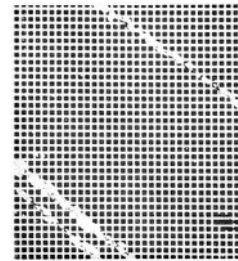
## SECOND SATURDAY PROGRAMS AT THE LIBRARY

Second Saturday programs are sponsored by the RMPL and attract a friendly group of folks who are interested in a specific subject, or who are interested in learning more about an area of philately that may be new to them.

*Contact Jim Kilbane if you would like to present a program.  
His email is aurora\_80017@yahoo.com*

**March 11, 9:00 a.m.**  
**A Philatelic Trivia Contest**  
**Presented by Harry Pederson**

Join your fellow members for a Philatelic Trivia Contest. The answers for this contest will be written on an answer sheet so those taking the quiz should not call out the answers verbally. The questions will cover both worldwide and United States material. At the end of the quiz the first, second and third place winners will receive prizes. I have previously presented this contest to the Arapahoe Stamp Club so anyone present from that presentation should recuse themselves. I hope all present enjoy this contest.



**April 8, 9:00 a.m.**  
**The Decline of the Vichy Overseas Empire -1940 to 1945**  
**Presented by Sergio Lugo**

Description: Overview of the disappearance of the French Overseas Empire between the accession of Marshall Petain and the Japanese takeover of Indochina, a loss of 33 colonies and possessions to the Free French in the course of 54 months, as documented by their postal history.  
The Djibouti cover shown accompanying this description is a post-war 1949 forgery.



## NEW MEMBERS

The RMPL is pleased to welcome the following new members who have joined the library during the past two months.

- ◆ Evan Stuart - Longmont, CO
- ◆ Azar Attura - Arlington, VA
- ◆ Sarah Henry - Colorado Springs, CO - Collects Scandinavian, Canada, China, Japan, SE Asia and Ireland
- ◆ R. John Blanyer - Littleton, CO - Collects U.S. Mint

## DONATIONS: December 1-January 31, 2017

The library thrives on the enthusiasm and generosity of its members. The following members made donations to the library (October through November) (alphabetized by first name). We thank each and every one who has contributed, many of you multiple times. Here are the people and organizations who contributed during this period.

Andrew Wacinski	Nolan Flowers
Bob Smetana	R T Lansing
Brian Sweet	Sandra Higel
Connie Huskins	Sarah Henry
Donald Lovelace	Steve McGill
Edward Hackstaff	Stewart Bliss
Jocelyn Aycrigg	Tonny Van loij
John Clement	William Blankemeier
Margaret Robinson	William Plachte

## HELP WANTED

We need additional help at the **Front Desk** and for **Stamp Sorters**. Our volunteers at the front desk usually work a half day (10:00 a.m. to 1:00 p.m. or 1:00 p.m. to 4:00 p.m.). It is a great way to get to know the membership, as well as the library's reference material. The work load is usually light with time for socializing, research, or working on your collection. Primary duties include checking books in and out and taking payment for purchased materials. Sorters work their own hours. Training is provided. Contact John Sinski or Howard Benson.

**303-759-9921**

## RMPL BOARD MEETING SUMMARY

### Meeting of January 19, 2017

Prepared by President John Sinski  
Meeting called to order at 7:00 p.m.

All Board members present. Others present included Steve Nadler, Roger Rydberg, Don Beuthel and Blaine Thomas. The December Board Meeting Minutes were approved.

### Financial Report

Check Detail Report, Balance Sheet as of December 30, 2016, and a Profit & Loss Statement for 2016 were distributed and discussed. The Proposed Budget for 2017 will be further discussed at the next meeting in March.

RMPL must resubmit for property tax exemption. The Finance Committee also recommended that we not pay for 2016 audit, but that have our accountants file a Form 990 which is the tax return for an "Organization Exempt From Income Tax."

It was recommended that we transfer a sizable sum of liquid assets to our Librarian Trust Fund (designated to fund a replacement for Ellengail when she retires). Prior to transferring any funds, Board members will review current fund reports and decide on final action during the next meeting.

### Old Business

The Technology Committee annual report was reviewed, including the purchase of four new computers that are now being used by our volunteers.

Membership was reported at 483 members which is down from 501 at the end of July, 2016.

### Long Range Planning Committee

David Weisberg reported that the committee will soon complete a publicity plan for the library. Part of this plan will include a proposal for setting up an estate planning program for people to donate to the library via a will. David also stated that plans for major building improvements are on hold for now.

### New Business

A request was received to hold dealer bourses at the Library meeting room. The formation of committee was recommended to review this proposal because a prior passed board motion prohibited this type of activity. (Since the meeting, a proposal for a trial bourse on March 25 was approved by e-mail.)

David Weisberg reported that there will be about 700 lots for the silent auction at Rocky Mountain Stamp Show in May.

New RMPL members were approved by Board.  
Meeting adjourned at 8:30 p.m.

**For the Record: Next Board Meeting:  
Thursday, March 16, 2017 at 7:00 p.m.**



Hours: Monday, Tuesday, Wednesday, Friday, Saturday 10 a.m. - 4 p.m.  
Thursday 2 - 8 p.m. Closed Sundays and Holidays. Phone: (303) 759-9921

Meeting times and places sometimes change. It is best to call the library or the club to confirm the place and time. A calendar of reserved club times is kept at the library by the Operations Manager, Howard Benson. Clubs should check the calendar regularly and notify Howard at (303) 521-6216 of any changes or updates. All requests to reserve meeting time and space for philately related meetings other than those listed here must be approved and scheduled by Howard well in advance.

### \*\*\*\*March 2017\*\*\*\*

#### March 1 Wed-Aurora Stamp Club

6:30 p.m. Trading  
7:00 p.m. Meeting

#### March 4 Sat-Meeting 10:00 a.m. Scandinavian Collectors Club

#### March 4 Sat-Meeting 1:00 p.m. Topical Philatelists In Colorado (TOPIC)

#### March 8 Wed-Meeting 7:00 p.m. Germany Stamp Club

#### March 9 Thu-Meeting 2:00 p.m. Cherrellyn Stamp Club

#### March 10 Fri-Meeting 7:00 p.m. Austria-Hungary Stamp Club

#### Second Saturday at the RMPL

#### March 11 9:00 a.m. Program by Harry Pedersen A Philatelic Trivia Contest

#### March 11 Sat-Meeting 10:00 a.m. Mexico/Latin America Club

#### March 12 Sun-Meeting 1:30 p.m. Denver Postcard Club

#### March 15 Wed-Meeting 7:00 p.m. Arapahoe Stamp Club

#### March 16 Thu-Meeting 7:00 p.m. RMPL Board of Directors All members are welcome

#### March 18 Sat-Meeting 9:30 a.m. Denver Young Collectors

#### March 19 Sun-Meeting 2:00 p.m. Great Britain and Colonies Collectors Club

#### March 22 Wed- Meeting 12:00 p.m. Denver Stamp Club

#### March 25 Sat 10:00 a.m.-4:00 p.m. Denver Metro Stamp Bourse RMPL Meeting Room

#### March 28 Tue-Meeting 7:30 p.m. Rocky Mountain Stamp Show Committee

### \*\*\*\*April 2017\*\*\*\*

#### April 1 Sat-Meeting 10:00 a.m. Scandinavian Collectors Club

#### April 1 Sat-Meeting 1:00 p.m. Topical Philatelists In Colorado (TOPIC)

#### April 5 Wed-Aurora Stamp Club 6:30 p.m. Trading 7:00 p.m. Meeting

#### Second Saturday at the RMPL

#### April 8 9:00 a.m. Program by Sergio Lugo The Decline of the Vichy Overseas Empire -1940 to 1945

#### April 8 Sat-Meeting 10:00 Mexico/Latin America Club

#### April 8 Sat-Meeting 11:30 Rocky Mountain Aerophilatelic Club

#### April 12 Wed-Meeting 7:00 p.m. Germany Stamp Club

#### April 13 Thu-Meeting 2:00 p.m. Cherrellyn Stamp Club

#### April 13 Thu-Meeting 6:30 p.m. Denver Postcard Club

#### April 14 Fri-Meeting 7:00 p.m. Austria-Hungary Stamp Club

#### April 15 Sat-Meeting 9:30 a.m. Denver Young Collectors

#### April 16 Sun-Meeting 2:00 p.m. Great Britain & Commonwealth Collectors Club

#### April 19 Wed-7:00 p.m. Meeting Arapahoe Stamp Club

#### April 25 Tue-Meeting 7:30 p.m. Rocky Mountain Stamp Show Committee

#### April 26 Wed-Meeting 11:00 a.m. Denver Stamp Club