

Scribblings

...from the Rocky Mountain Philatelic Library



Ellengail Beuthel, Librarian...

Vol. 25 - No. 4
www.rmpldenver.org

2038 South Pontiac Way, Denver, CO 80224-2412
(303) 759-9921

July/August 2017
Email - rmpl@qwestoffice.net

IN THIS ISSUE

Moving Railroad Mail Down the Line by Paul Albright ... 1

President's Letter
by John Sinski..... 2

RMSS Timeline in Pictures . 5



*RMPL Special Collections:
The Western and Railroad
Collection* by Jim Kilbane .. 6

New on the Shelves..... 7

Looking For Answers
by Jeff Modesitt..... 12

*Here's a Wager to Which
We Can All Relate*
by Sergio Lugo 13

*Second Saturday Programs ..
by Kilbane and Leitz (July)
and McGill (August)* 14



New Members 15

Donations..... 15

Board Meeting Summary.. 15

Activities Calendar 16

Moving Railroad Mail Down the Line

By Paul Albright



A weathered wooden box used for sorting and directing railroad business mail from the depot at Centennial, Wyoming. (Photo by Paul Albright.)

A weathered wooden mailbox tucked away in the back of a small-town museum can open the door to learning about the handling of railroad business mail as rail lines threaded their way through the Rocky Mountains a century ago.

The rough-hewn box with a leather strap holding down a hinged top is marked "Company Mail" across the top with "East Bound" painted in black on one corner and "West Bound" on the opposite corner. The white-painted box was hung on the outside of the railroad station at the small community of Centennial, Wyoming, in the Medicine Bow Mountains west of Laramie.

Railroad historians say that crews on the Laramie, Hahns Peak & Pacific (LHP&P) Railroad would have placed Railroad Business (RRB) mail in the box, dividing it by the direction it was headed to railroad company offices down the line.



The depot at Centennial, Wyoming was dedicated on July 4, 1907; was donated to the Centennial Valley Historical Association by the Union Pacific Railroad on October 9, 1974; was moved to the museum grounds on May 25, 1975; and is now on the National Register of Historic Places.

*More information at <https://niciselfmuseum.org>
(Source: Depotmaps.com).*

(Continued on page 3)

Scribblings

Newsletter of the
Rocky Mountain Philatelic Library

2038 So. Pontiac Way
Denver, CO 80224
Phone: (303) 759-9921
email: rmpl@qwestoffice.net
Hours: 10 a.m. to 4 p.m. daily,
Thursday, 2 p.m. to 8 p.m.
Closed Sundays & Holidays

Editor

Jeff Modesitt (jeffmcolorado@gmail.com)

Copy Editors / Proofreaders

Don Beuthel
Ellengail Beuthel
John Bloor, John Sinski
Steve Schweighofer

Librarian

Ellengail Beuthel

Scribblings is published bimonthly by the Rocky Mountain Philatelic Library. The RMPL is a chartered Colorado nonprofit corporation and is an IRS-designated 501(c)(3) charitable organization. Membership subscriptions over that for the regular membership, and donations of appropriate philatelic materials, are deductible for US income tax purposes. The Library is a volunteer organization. Financial donations, philatelic books, stamps, supplies and donations of your time, are welcome.

A basic membership with the RMPL is \$25 per year, and includes checkout privileges and *Scribblings*. Call for more information.

Knowledge is better when shared. Consider writing an article for *Scribblings* about your favorite philatelic topic.

President..... John Sinski
Operations Manager..... Howard Benson
Vice President Jim Kilbane
Corresponding Secretary..... Bill Plachte
Recording Secretary Paul Lee
Treasurer Tim Heins, CPA

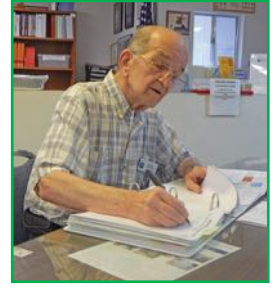
Directors: John Bloor, Steve McGill,
Dalene Thomas, David Weisberg.
Director Emeritus: Don Dhonau.
Ex-officio member, Ellengail Beuthel.

Officers and Directors may be contacted through the RMPL.

Web page — www.rmpldenver.org

The President's Message

We finally made it through another Rocky Mountain Stamp Show and RMPL Silent Auction. The show went well with great exhibits, happy dealers, and a good auction for us. We finished the auction at \$13,753.50 and followed that with after-auction sales of \$2,747.00 for a total of \$16,500.50 (as of June 17, 2017).



As you will see in this *Scribblings* edition, we are continuing the series of articles on our special collections. I would hazard a guess that most of our members are either not aware of these resources or assume that they are locked behind steel doors. Several are securely locked, but all of them are available for viewing and research. Access only requires an appointment! I encourage you to make use of these fine collections.

Speaking of collections, you have probably noted an exceptional number of books being highlighted in the *Scribblings* new books pages, especially those that are topically oriented. Ellengail is rapidly cataloging George Griffenhagen's large book donation and we encourage you to check out a few.

On the stamp acquisition side, we will be having another bourse on July 29th. Come out and support our local dealers (see page 4 for more information). The last bourse went well for both dealers and the members attending. Hope to see you there!

John Sinski

HELP WANTED

We need additional help at the **front desk** and for **stamp sorters**. Our volunteers at the front desk usually work a half-day (10:00 a.m. to 1:00 p.m. or 1:00 p.m. to 4:00 p.m.). It is a great way to get to know the membership, as well as the library's reference material. The work load is usually light with time for socializing, research, or working on your collection. Primary duties include checking books in and out and taking payment for purchased materials. Sorters work their own hours. Training is provided. Contact John Sinski or Howard Benson.

303-759-9921

“Wooden boxes similar to these were attached to depot front walls facing the tracks for access by the train crew,” said Frank Scheer, curator of the Railway Mail Service Library. Handling this mail would be a baggage master who received, sorted, and dispatched RRB mail enroute.

“Separating mail by direction made it easier for a quick pick-up and delivery during a brief station stop, particularly when it was dark,” said Scheer. “I expect that most of these boxes were used when trains stopped at times when there was no agent-operator on duty.” One sidelight is that RRB mail could be sent in this manner (i.e., outside of the postal system) to any railroad in the country; it was not limited to one’s own rail line.

Scheer explained that railroad mail would have consisted mostly of waybills and bills of lading involving contracts between consignors and the railroad for freight shipments, information concerning location and routing of shipments, contents of shipments, and the value. These documents are handled by conductors on the trains or clerks in the rail yards who then forward them on to accounting offices to confirm the rates and charges and allocate revenue between carriers if more than one railroad is involved.

“RRB appeared where a stamp would otherwise go,” according to Scheer. “The envelopes did not state RRB in either the delivery or the return address. For the delivery address on-line for a railroad, all that was needed was the person’s name and office at which they worked. (See, for example, the RRB cover with this article addressed to an assistant engineer in the Southern Pacific R.R. office in California.)

Some RRB mail was registered and required signatures and hand-to-hand transfer, Scheer added. “These had a registered sticker applied to the envelope with a tracking number. These are not the same as the Post Office Department’s Registered Mail, but similar in concept and practice.”

Postal mail probably was not deposited in the box at the Centennial station, added railroad historian Jerry Hansen of Laramie. Mail to and from Centennial was carried by a wagon freight line until the LHP&P secured the contract in 1906. “The mail was put in the depot at Centennial when brought out from Laramie and the railroad hauled the mail to the rest of the line.”



An example of a railroad business mail cover sent in July, 1875, from the office of the chief engineer of the Southern Pacific Railroad to an assistant engineer of the SPRR in Los Angeles, California. (Source: Central Pacific Railroad Photographic History Museum, cpr.org/museum/ephemera/postal.html).



A picture post card (circa 1910) showing construction of the Laramie, Hahn's Peak and Pacific track near Fox Park, Wyoming, south of Centennial. This card was mailed on September 20, 1911, by a student at the University of Colorado in Boulder to a friend in Denver. (Source: Jack Willard post card collection, Rocky Mountain Philatelic Library.)

The LHP&P line originally was built to serve the area’s gold, platinum, and copper mines, but the mines had been worked out by the time the railroad reached Centennial. The operators then turned toward coal mines in northern Colorado, moving through Walden, Colorado in 1911, and terminating at Coalmont, Colorado, some 111 miles from Laramie. Although the operators aspired to extend the line to the West Coast, it struggled financially for many years, eventually changing names and operations five times after 1914. The tracks were removed after 1996, leaving behind hiking, biking, and equestrian

trails in the Medicine Bow National Forest.

After the rail lines were pulled up in Centennial, the depot was converted into a local historic museum. Among its many artifacts is the 100-year-old wooden box that once served to move company mail down the railroad line.

References and Acknowledgments

Railroads of Albany County: Tracking the Past, by Larry Ostresh, Albany County (Wyoming) Historic Preservation Board, 2011.

Wyoming Post Offices, 1850-1980, by John S. Gallagher and Alan H. Patera, 1980.

Wikipedia: “*Laramie, North Park and Western Railroad*,” and “*Defunct Wyoming Railroads*.”

Research assistance from Cecily Goldie, Centennial Valley Historical Association; Jerry Hansen, president, Laramie Historic Depot Association; Frank Scheer, curator, Railway Mail Service Library; and railroad enthusiasts Jon Habegger, Eric Miller, Gary Rich, David Thompson, and Bryan Whipple.



Tracklaying at Fox Park, Wyoming, near the log railroad depot. The photograph for this picture post card was taken in 1910 or 1911. This section of Wyoming’s Medicine Bow Mountains was a major producer of railroad ties in the U.S. in the first half of the 20th century. (Source: Eric Miller.)

\$1.00 off Admission with this flyer

Denver Postcard & Paper Show

Antique & Collectible Postcard & Paper Show & Sale

Jefferson County Fairgrounds Exhibit Hall
(15200 W. 6th Ave., Golden, CO 80401)

2017 Show Dates

January 13 & 14
May 5 & 6
July 14 & 15

Fri. - 11:00 - 7:00
Sat. - 9:30 - 4:30

\$5.00 Admission - good for both days
Contact Carol Mobley at 720-308-1516

email: camobley@ephemeranet.com
www.facebook.com/denverpostcardshow
www.DenverPostcardShow.com

The Rocky Mountain Antiquarian Booksellers Association presents

THE 33RD ROCKY MOUNTAIN

★ BOOK & ★

★ PAPER FAIR ★

August 4-5, 2017

★ Friday 2-8pm ★ Saturday 10am-5pm ★

The Largest Antiquarian Book & Paper Fair in the Rocky Mountain Region!

Exhibitors from across the nation present their finest Antiquarian & Rare Books, First Editions, Signed Books, Maps, Western Americana, Photos, Art Prints, Bookplates, Postcards, Americana, Historical Books, Experiments, Children's Books, and more!

DENVER MART 431 East 16th Avenue - just East of I-25
\$7 admission for one day or both!

★ **RMBPF.ORG** ★

DENVER BOURSE

RMPL 2048 S. Pontiac Way
Saturday - July 29,
10 a.m. to 4 p.m.

Dealers are willing to bring specific materials if you request that at their specific e-mails below:

20th Century Classics: Patrick Dowling:
Job Lots, Collections, Stamps and Postal History
20thonline@comcast.net

Lewis Enterprises: Dick Ruth:
Postcards and limited supply of stamps
lewisent@q.com

Ptarmigan Collectibles Sergio Lugo:
Collections and Stamps. There will be very little postal history or post cards for this bourse.
lugospe@q.com

Rusty's Maps: Rusty Morse:
Job lots, collections, stamps
Rustysmaps@msn.com

Tonny Van Loij: Postal history & stamps
tvanloij@gmail.com

RMSS Timeline in Pictures



When fully loaded - 2,300 pounds each



Last row to finish!



The next step is to put 16 pages in each of the 336 frames



Part of the cheap labor crew (Chris McGill, Tonny Van Loij, Steve McGill, and Steve Nadler)



Before the arrival of dealers and before the left table collapsed under the weight of dozens of dealer boxes



Jerry Eggleston and Steve McGill take a break between set-up and the show opening



APS President Mick Zais and APS Librarian Tara Murray



Postmaster Sam Reed and Mick Zais cut the ribbon while Bob Miller assists.



Bottom two pictures courtesy of Haleigh McGill

Aficionados, families, and friends enjoy the exhibits while dealers help fill all those album gaps. A great time for all who participated!





RMPL Special Collections

By Jim Kilbane

The Western and Railroad Collection

The Western History & Railroad Collection Room is dedicated to Jack Willard. Jack's main interests were railroad and postal history and he was one of the founders of the Rocky Mountain Philatelic Library. Most of the books found in what the RMPL now calls the *Western and Railroad Collection* were Jack's.

He had books numbering in the hundreds on several subjects. Most of his collection related to philately and railroading. He thought a philatelic library would be a good place for his and other collector's books. He also believed donations to the new library would serve a secondary function by helping de-clutter some homes while making these volumes available for others.

The Western History room has other items: hangings showing old ticket stubs and ticket punches, an old railroad lantern, a lock, a conductor's hat, and even an old narrow gauge railroad spike from Aspen.

There is a large collection of books dedicated to the history of Colorado, including mining and agricultural areas, towns, cities, and historical figures. The shelves include both books of general historical interest and books more specifically oriented to postal historians. There are listings of post offices, place names, and maps of the state and counties. There are even books on various cattle brands. The collection includes a run of the *Colorado Heritage* magazine, *The Colorado Magazine*, *Colorado History Now*, and the *Colorado Year Book*. There are also copies of philatelic exhibits.

Most of the other historical and philatelic books are from the western portion of the country. This includes several books about Native Americans, their tribes and place names. The collection includes books about Texas, Arizona, and California postal history with runs of *Nebraska History* magazine and *The Journal of Arizona History*. As might be expected, there are a

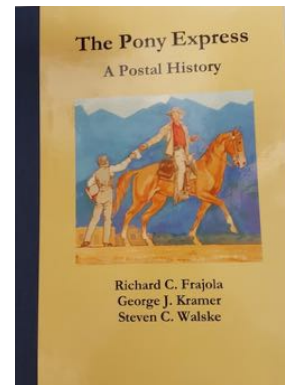
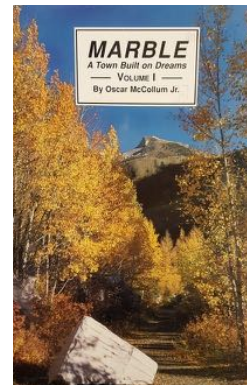
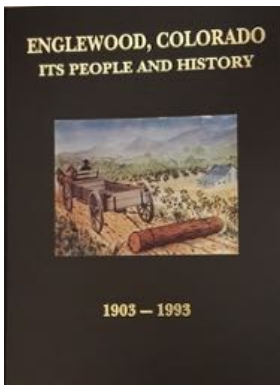
number of books about gold mining and the gold rush, as well as two volumes on "Marble: A Town Built on Dreams." The history of coal and silver mining is also well-represented. There are even a few eastern historical and philatelic tomes scattered in on the shelves. If you are interested in books listing United States place names and post offices or general history books, including accounts of the Lewis and Clark Expedition, look no further.

The railroad books are focused on the west, but provide extensive coverage of the rest of the country, Canada, and many other areas of the world. These volumes cover both narrow and standard gauge railroads, as well as electric and steam railroads. In the railroad collection, you will additionally find books about trolleys, street cars, ships used as post offices, interurbans, cog railroads, ocean liners, and Electroliners.

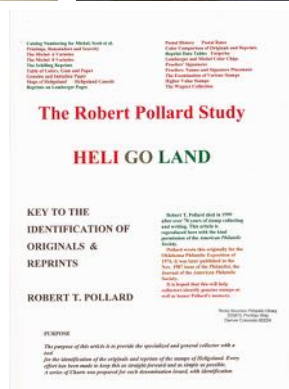
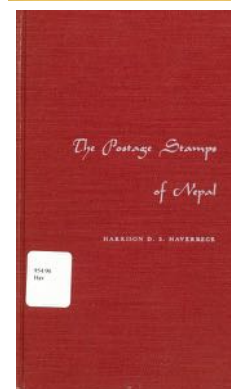
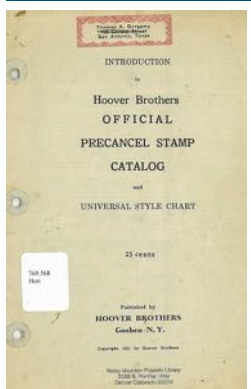
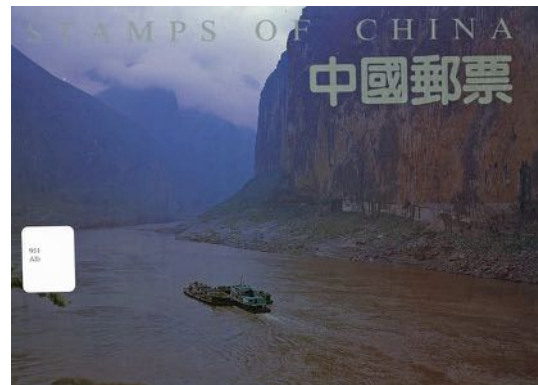
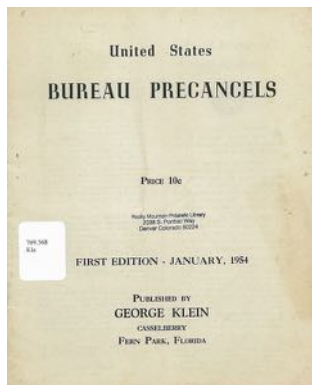
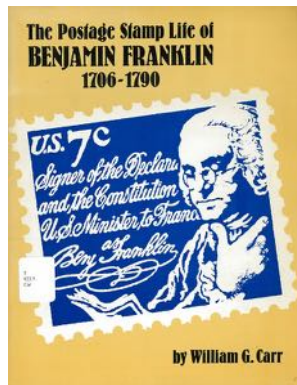
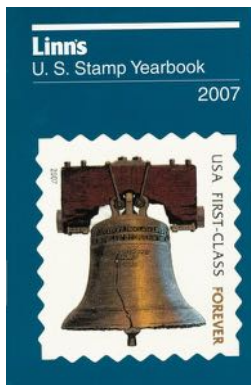
If you are looking for post offices that move, you will see a run of the Mobile Post Office Society bulletins and the Highway Post Office bulletins. Wells Fargo, Pony Express and other express company books are also included in the collection. There are books about train equipment, including the *Official Register of Passenger Train Equipment*. Of course there are route maps and time tables.

There are several long-run railroading publications. Some of these are: The Railway and Locomotive Historical Society journals. *Trains - The Magazine of Railroading*, *Railroad Man's Magazine* and *The Official Guide Standard Time of the Railways and Steam Navigation Lines of the United States, Puerto Rico, Canada, Mexico* and airline schedules.

This is just a sampling of what can be found in the Western History & Railroad Collection room. Stop by and find out more about the west. You can spend many hours in this room. Oh, by the way, say hello to John Sinski as his office is also in this room.



NEW ON THE SHELVES



UNITED STATES

Directory of Railway Post Offices, by John L. Kay

Introduction to Hoover Brothers Official Precancel Stamp Catalog and Universal Style Chart, published by Hoover Brothers

Linn's U.S. Stamp Yearbook: 2005, 2006, 2007, published by Linn's Stamp News

The Postage Stamp Life of Benjamin Franklin, 1706-1790, by William G. Carr

United States Bureau Precancels 1st Edition (1954), published by George Klein

ASIA

An Album of 1994 Stamps of China [no stamps], published by China International Philatelic Corporation

The Postage Stamps of Nepal, by Harrison D.S. Haverbeck

The Stamps of the People's Republic of China 1999 [album, no stamps], published by China International Philatelic Corporation

EUROPE

Heligoland: Key to the Identification of Originals & Reprints, by Robert T. Pollard

A Short History and Descriptive Particulars of the Postage Stamps of Ireland 1922-1969, published by Hibernian Stamp Co.

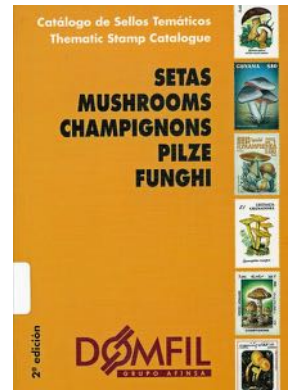
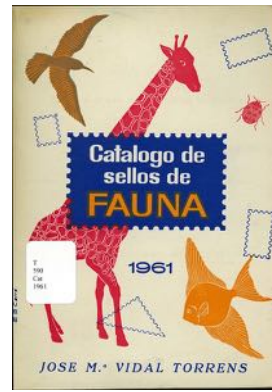
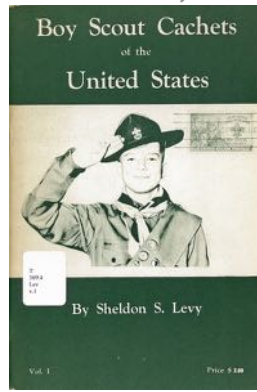
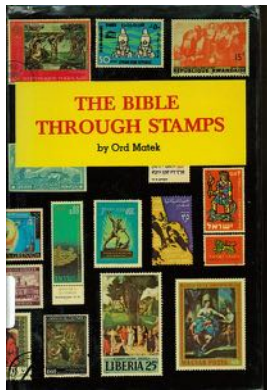
TOPICAL

120 Years of Shells on Stamp: 1859-1979, by George A. Brown

Another Way of Looking: New Zealand's Birds on Stamps, by Margaret L. Forde

The Bible Through Stamps, by Ord Matek

Birds of Prey (Greifvögel), by A.E. de Jong, D.L. Bekker, J.C.J. Homan, and G. Coerts



Boy Scout Cachets of the United States, by Sheldon S. Levy

Catalogue General des Timbres Sportifs (1947), by Guy Depolier

Catalogo de Selos de Fauna, published by Jose M. Vidal Torrens

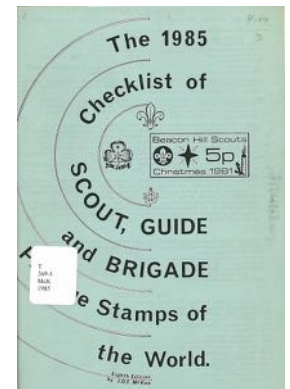
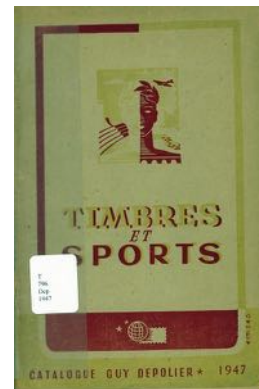
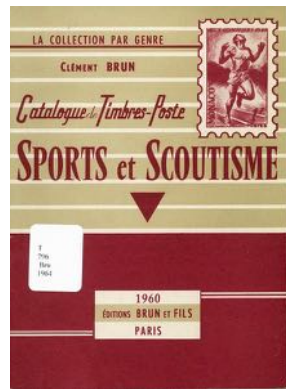
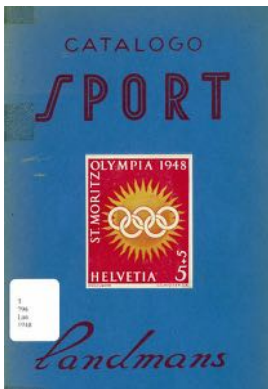
The Checklist of Scout, Guide and Brigade Postage Stamps of the World, 5th, 6th, and 8th Editions (1981, 1983, 1985), by J.D.F. McKee

Catálogo de Sellos Temáticos [Thematic Stamp Catalog]: Setas [Mushrooms, Champignons, Pilze, Funghi], 2nd edition, published by Domfil

Collecting Bird Stamps, by Christine E. Jackson

Catalogo Sport, Containing Sport Stamps of all the World, editor G. Landmans

The Concorde Collectors Handbook Illustrated, by Brian L. Asquith

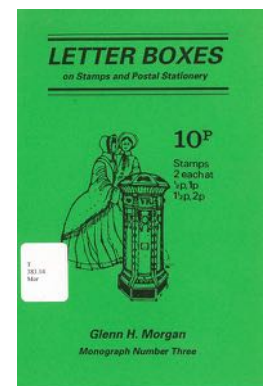
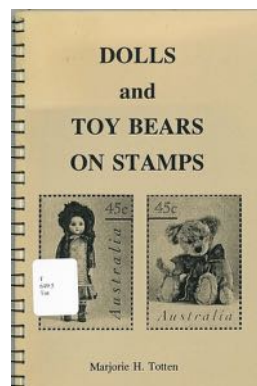


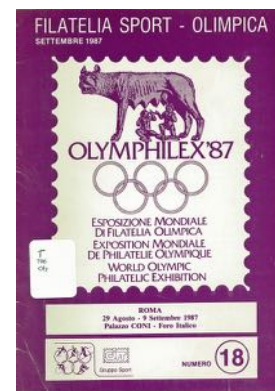
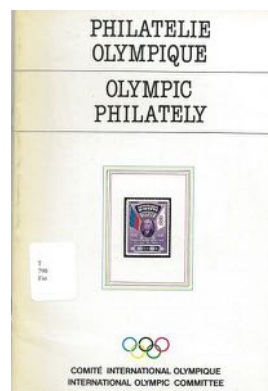
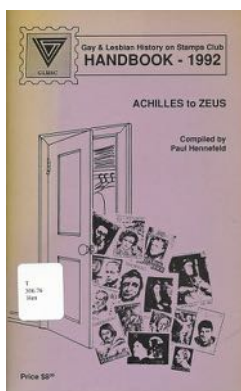
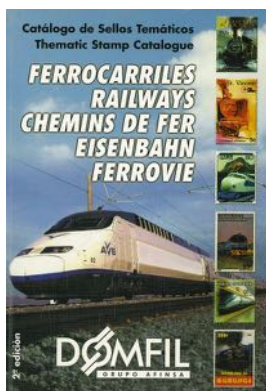
Catalogue de Timbres-Poste: Sports et Scoutisme, by Clement Brun

Die Madonna im Briefmarkenalbum, Second Extended Edition; 4th edition, by Josef Franz Aumann

Catalogue de Timbres-Poste: La Faune, by Clement Brun

Dolls and Toy Bears on Stamps, by Marjorie H. Totten





Ehre, Wem Ehre Gebührt, by Heinz Patzer

Letter Boxes on Stamps and Postal Stationery, by Glenn H. Morgan

Eisenbahn auf Briefmarken: 1 West-Europa, by Hans D. Reichardt

Ferrocarriles, Railways, Chemins de Fer, Eisenbahn, Ferrovie, 2nd Edición, published by DOMFIL

Gay & Lesbian History on Stamps, compiled by Paul Hennefeld

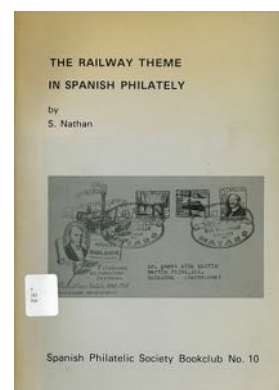
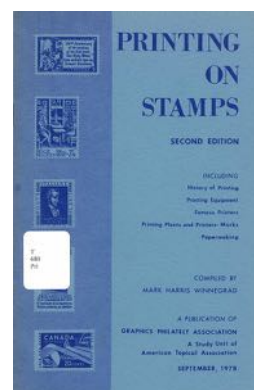
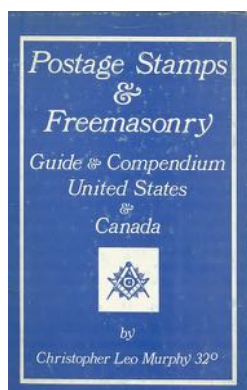
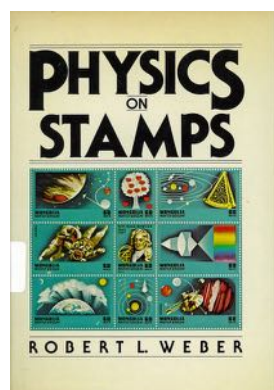
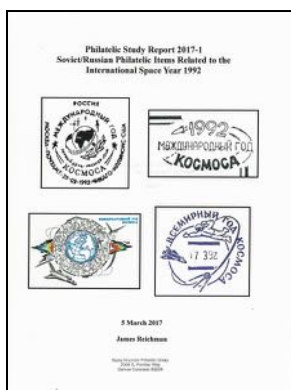
Philatelic Study Report 2017-1: Soviet/Russian Philatelic Items Related to the International Space Year 1992

Physics on Stamps, by Robert L. Weber

Postage Stamps & Freemasonry: Guide & Compendium, United States & Canada, by Christopher Leo Murphy

Printing on Stamps, 2nd Edition, compiled by Mark Harris Winnegrad

The Railway Theme in Spanish Philately, by S. Nathan



L'Histoire des Religions au Point de vue Thématique-Philatélique, by Romana Caldeira Câmara

Olympihlex '87: Esposizione Mondiale di Filatelia Olimpica [World Olympic Philatelic Exhibition]

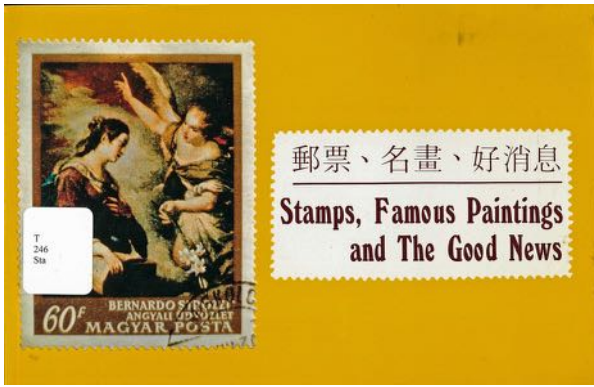
Philatelic Olympique-Olympic Philately, by Giuseppe Sabelli Fioretti and Jose Maria Soler Villa

Shells on Postage Stamps Around the World, by Karl Emmerich

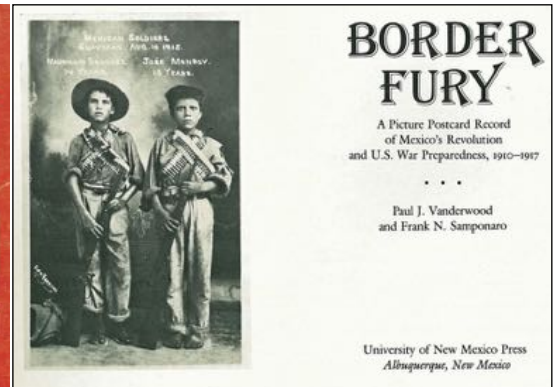
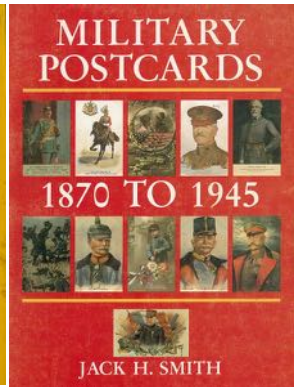
Sports Stamps, by Carl-Olof Enhagen

Stamps, Famous Paintings and the Good News, published by the Hong Kong Bible Society

Stamps & Postmarks Related to the Boy's Brigade & Kindred Organisations, by Stanley K. Hunter



郵票、名畫、好消息
Stamps, Famous Paintings
and The Good News



The World of Birds on Stamps, by Philip J. Lanspeary

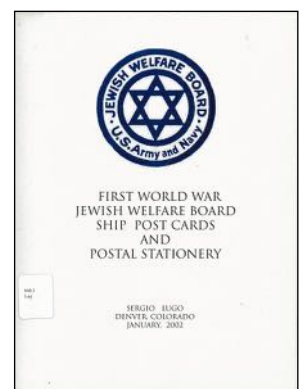
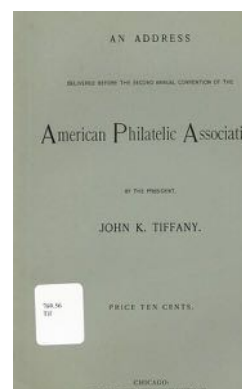
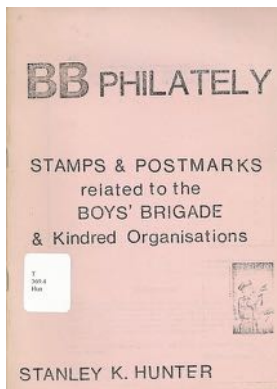
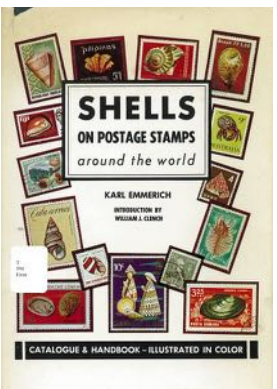
An Address Delivered Before the Second Annual Convention of the American Philatelic Association, by the President John K. Tiffany

POSTCARDS

Border Fury: A Picture Postcard Record of Mexico's Revolution and U.S. War Preparedness 1910-1917, by Paul J. Vanderwood and Frank N. Samponaro

First World War, Jewish Welfare Board, Ship Post Cards, and Postal Stationery, by Sergio Lugo

The Great Texas Stamp Collection, by Charles W. Deaton



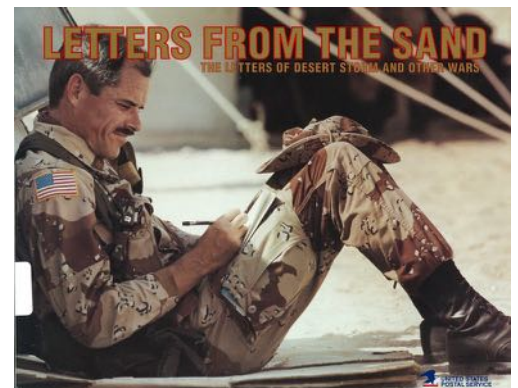
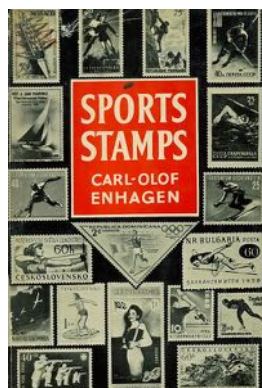
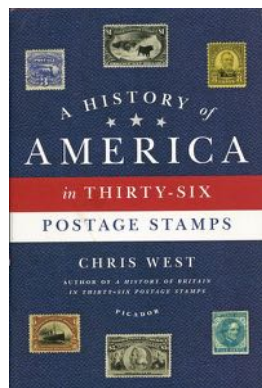
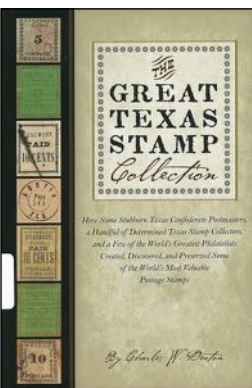
Military Postcards: 1870-1945, by Jack H. Smith

A History of America in Thirty-Six Postage Stamps, by Chris West

MISCELLANEOUS

All About Stamps: An Illustrated Encyclopedia of Philatelic Terms, by Wayne L. Youngblood

Letters from the Sand: The Letters from Desert Storm and Other Wars, published by the United States Postal Service



AUCTION CATALOGS

APS StampShow Auction: USA Classics, British & Foreign, Covers & Collections, Coins & Currency, catalog for a Regency Superior auction August 2015

Chicagopex Stamp Auction, catalog for a Regency-Superior auction November 2015

The Fall Sale, catalog for a Schuyler Rumsey auction October 2015

The Flagship Series, catalog for a Daniel F. Kelleher auction February 2017

The Flagship Series Featuring the “Hampshire” Collection of United States Singles and Plate Blocks, Canada Classic Imperforates, the “Preserve” Collection of Quality United States, William R. Weiss New York Foreign Mail Postal Cards, and the “Smaltz” Collection of Russia, catalog for a Daniel F. Kelleher auction April 2016

Florida in the Civil War: The Deane R. Briggs, M.D. Collection, catalog for a Robert A. Siegel auction May 2017

Mexico Sale Number 13, catalog for a Nicholas Follansbee Philatelic Sale October 2001

Mexico Sale Number 14, catalog for a Nicholas Follansbee Philatelic Sale October 2001

Orcopex Stamp Show Auction, catalog for a Regency Superior auction January 2015

Outstanding United States Stamps Featuring Choice Quality 19th and 20th Century Stamps

from the Estate of George Linck and a Major Holding of 19th Century Multiples and Sheets from an Old-Time Collection, catalog for a Robert A. Siegel auction February 2015

Saint Louis Stamp Expo Auction 2015, catalog for a Regency Superior auction March 2015

SESCAL Los Angeles, California Stamp Show Auction: Space & Autographs Auction, catalog for a Regency Superior auction October 2015

Sets, Singles, Postal History & Collections of the World, catalog for an H.R. Harmer auction June 2015

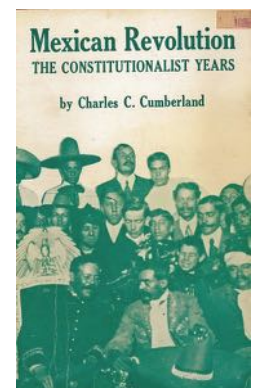
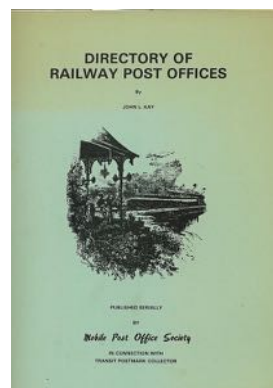
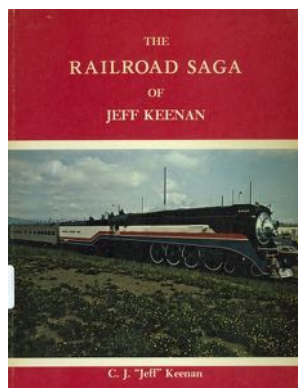
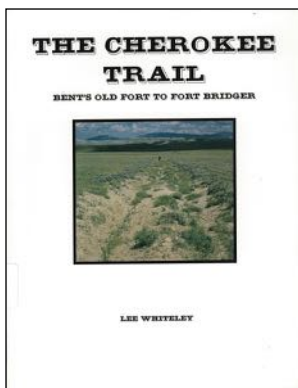
Sets, Singles, Postal History & Collections of the World: the 75th Anniversary Auction; Public Auction 3008 Including the Ray Newburn Collection of Colorado Postal History, the “New Bedford” Collection of Hawaii [and other collections], catalog for an H.R. Harmer auction October 2015

The Steven Walske Collection of North American Blockade Run Mail and French Royal Packet Mail, catalog for a Robert A. Siegel auction May 2017

United States, British Commonwealth. BNA & India, Foreign & Forgeries, catalog for a Harmers International auction May 2017

United States & Confederate Postal History Featuring the Deane R. Briggs, M.D. Florida Collection, catalog for a Robert A. Siegel auction May 2017

(Continued on page 13)



Looking For Answers

By Jeff Modesitt



It is surprising that more great detectives weren't also stamp collectors or postal historians. There are few hobbies that consistently provide more challenges regarding puzzles that are looking for answers than philately. Two such enigmas are presented below. The first involves a pre-printed business envelope sent from the UK London office of Van Oppen & CO. to its Rotterdam office.

The original incentive to purchase the cover was the presence of the two "cut-outs." These are highly collectable, in part, because the British post office couldn't make-up its mind about their validity. During the period between January 1905 and June 1915, cut-outs were sanctioned. This resulted in not only some commercial use, but a philatelic free-for-all.

The Van Oppen cover dated July 9, 1909 is desirable because it is clearly commercial with a one penny and a half penny cut-out from newspaper wrappers. It is additionally franked by Stanley Gibbons #245 pale dull purple 6d stamp. The puzzle about this cover, however, is not the legitimacy of the cut-outs, but the 7½d franking.

From October 1, 1907 until June 2, 1918, rates for letters to foreign destinations were as follows:

2½d	1oz	("d" is the notation for pence)
4d	2oz	
5½d	3oz	
7d	4oz	

The problem is that Van Oppen was a carrier and shipping agent and was not likely to over-frank commercial correspondences. So why the 7½d postage? If the letter contained up to 4 ounces (which is unlikely since the envelope material is quite thin and might easily tear), the rate would have been 7d and the extra ½d cut-out would not have been needed.

The letter was postmarked at 7:00 p.m. and might have required a late fee, but that would have only been 1d, resulting in a remainder franking (6½d) that doesn't fit the then current rate schedule.

The only rate combination that I can find that might fit

is that the envelope paid for registration which was 2d. Postage for 3 ounces would have been 5½d, making up the 7½d found on the cover.

The questions then become: 1) were there any conditions under which a registered envelope might be sent without the registration label; and 2) could companies such as Van Oppen, who evidently had substantial correspondence between offices as suggested by the pre-printed envelope, have an arrangement that allowed them to post registered mail late in the day without having to present the mail at a counter to go through the registration process? Comments and suggestions welcome!

The second puzzle was submitted by Michael Peach, a frequent contributor to the GBCC *Chronicle* and an expert on many facets of British philately - so this one is likely to be quite challenging!

Michael writes:

"I have been assembling some covers for an article/exhibit on Diamond Marks. I recently purchased the cover shown below.



"There are several interesting features. It was mailed from the USNS Gen. Wm. O Darby (T-AP 127) and went via Frankfurt am Main (Nachträglich) 12.10.65 to Warrington, Lancashire. It has six orange red ½d Wilding definitive stamps, only cancelled on the corner with a black diamond census mark. The 3d postage would cover the inland postage from October 1957 to May 1965.

"During the period 1956-1965 the General William O. Darby, a transport ship, was sailing on the New York to Bremerhaven route. Hence the possibility of being mailed on docking in Bremerhaven and going via Frankfurt to England.

"The writer was presumably one of the passengers. Why the British stamps? Did the ship stop at one of the British naval ports enroute to or from New York? The cover has not been opened and there are no contents, so it is presumably a philatelic item."

If you have any thoughts about these items, please contact the editor at jeffmcolorado@gmail.com, corner him at the RMPL, or leave a comment in the Scribbling's mail box.

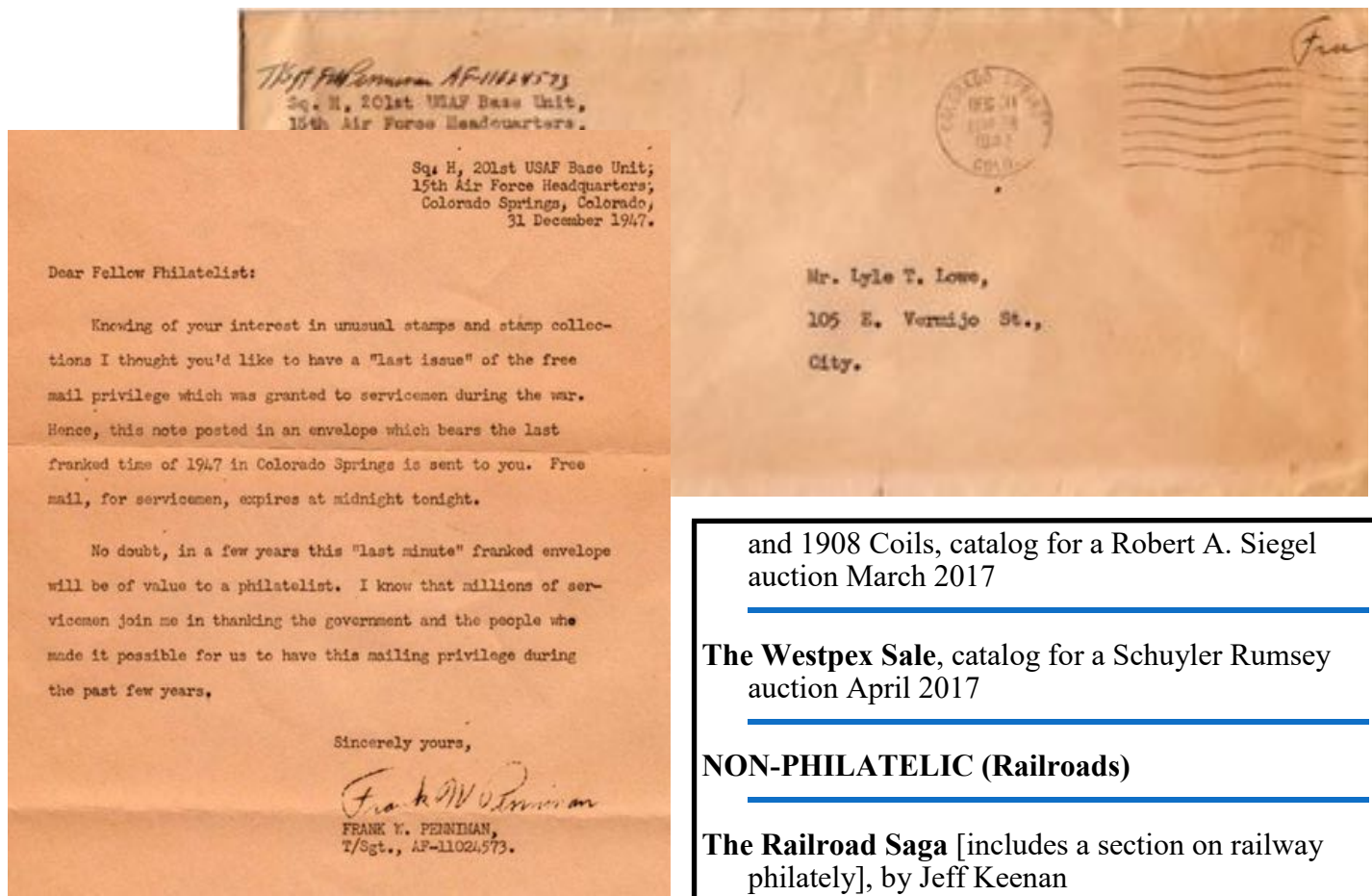
Here's a Wager to Which We Can All Relate

By Sergio Lugo

I'd venture to say that all of our readers are enthusiasts for anything free, and better yet to see most things come to an end. If you agree, let your eyes scan the cover presented below, covering up the letter with a sheet of paper. Having done that, why do you think Mr. Lowe, the addressee, would have liked the cover and its contents?

- | | | |
|----------------------------------------------------------------------|-----|----|
| Because it was free? | Yes | No |
| Because it was dated Dec. 31, 1947? | Yes | No |
| Because the 15 th Air Force Headquarters was closing down | Yes | No |
| Because T/Sgt. Penniman was getting out of the Air Force | Yes | No |
| You give up, it's something else | Yes | No |

If you answered "Yes" to the final question, you're correct. For this letter marks the end of an era in American postal history. Now remove the paper covering the letter and read the letter. The letter was sent at practically the penultimate moment of that postal history. Enjoy – and thank Tonny Van Loij for having shared the cover and its contents with me after RMSS – looking for a purchase price. As of this writing it is unsold, but one of you may want to approach him for its purchase. This article will appear in *Scribblings*, as well as the *Military Postal History Society Bulletin*.



and 1908 Coils, catalog for a Robert A. Siegel auction March 2017

The Westpex Sale, catalog for a Schuyler Rumsey auction April 2017

NON-PHILATELIC (Railroads)

The Railroad Saga [includes a section on railway philately], by Jeff Keenan

NON-PHILATELIC

The Cherokee Trail: Bent's Old Fort to Fort Bridger, by Lee Whiteley

Mexican Revolution: The Constitutionalist years, by Charles C. Cumberland

(Continued from page 11)

United States Carriers, Local Posts and Independent Mails, catalog for a Robert A. Siegel auction March 1996

United States Stamps Including Superb-Quality 19th Century Classics, the Vaquero Collection of 20th Century Issues, Major rarities from a longtime Collector. Featuring Special Printings

SECOND SATURDAY PROGRAMS AT THE LIBRARY

Second Saturday programs are sponsored by the RMPL and attract a friendly group of folks who are interested in a specific subject, or who are interested in learning more about an area of philately that may be new to them.

Contact Jim Kilbane if you would like to present a program.
His email address is: aurora_80017@yahoo.com

July 8, 9:00 a.m.

Learn more about your library by joining the Second Saturday group for a tour of the lower level of 2048 S Pontiac Way. This will include seeing the special libraries, the special collections, and the Colorado Postal history room.

Presented by Jim Kilbane and Frank Leitz



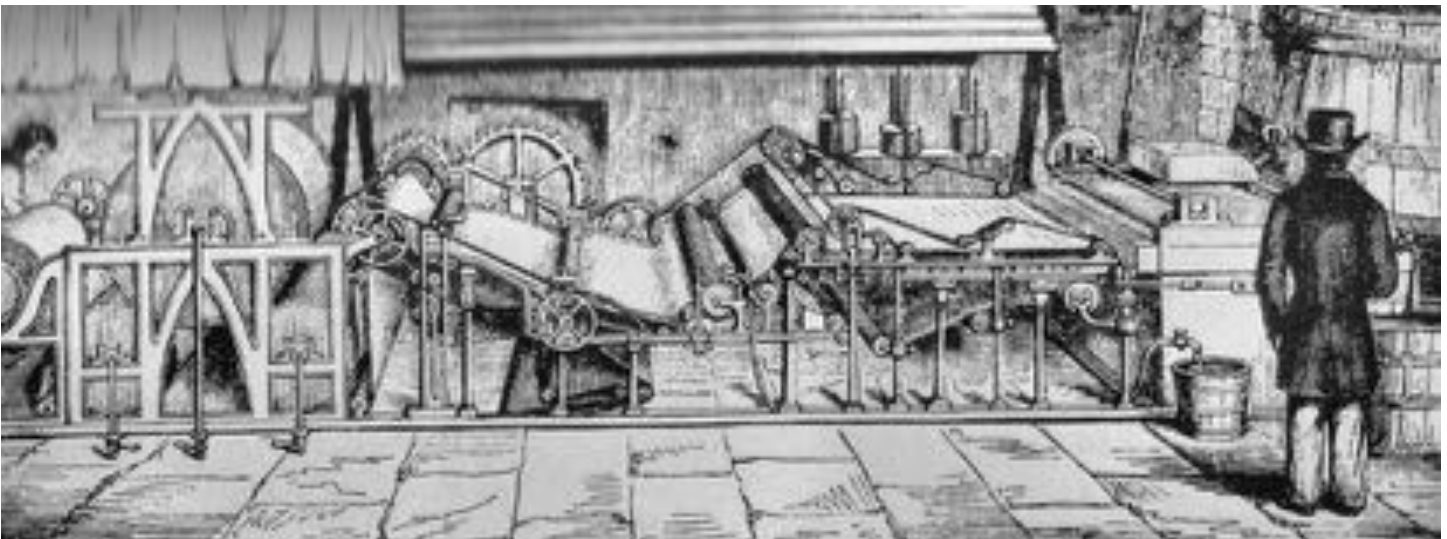
August 12, 9:00 a.m.



Presented by Steve McGill

Papermaking and the Evolution of British Stamp Paper.

How Tin, Clothing, Taxes and the Search for a Consistently Bright Appearance Shaped Stamp Paper Production. The presentation begins with the origins of the technology in England that would lead to the ability to make paper. This process is traced through early history to the founding of paper mills and focuses on the Stowford Paper Mill in Ivybridge. Papermaking at Harrisons is also reviewed ending with a synopsis of modern papers used for stamps.



NEW MEMBERS

The RMPL is pleased to welcome the following new members who have joined the library during the past two months through May 27, 2017.

- ◆ Roy Conovitz, Denver, CO
- ◆ Patricia Buhring, Aurora, CO - Collects First Day of Issue
- ◆ Mel Roghair, Littleton, CO - Collects Worldwide Pre-1941
- ◆ Francois Guillotin, Golden, CO - Collects French Revenues

DONATIONS: April 11, 2017 to May 30, 2017

The library thrives on the enthusiasm and generosity of its members. The following people made donations to the library (April 11th through May 30th). We thank each and every one who has contributed (alphabetized by first name). Here are the people and organizations who contributed during this period.

Amy Wieting	Linda Eith Heimink
Bob Plowman	Linda Warman-Holt
Charles Freise	Peter Colwell
Charles Reed	Peter Ditlow
Dawn Ketter	Roger Cichorz
Deborah Getz	Sidney Smith
Denver Postcard Club	Stanley Luft
Duane Spidle	Steve Bonowski
Edward Zamejc	Terry Ketlesen
Gail Domenico	Warren CATERON
Gary Hendren	William Plachte
Gene M. Holgate	William Stolfus
Jack Van Ens	

**For the Record: Next Board Meeting:
Thursday, July 20, 2017 at 6:30 p.m.**

RMPL BOARD MEETING SUMMARY

Prepared by President John Sinski

The meeting of May 18, 2017 was called to order at 7:00 p.m. All Board members were present. Rich Palestro was also in attendance. The March board meeting minutes were approved.

FINANCIAL REPORT

Expenses by Vendor (Mar-Apr 2017), Income and Expenses (Mar-Apr 2017), and the Balance Sheet as of Apr 30, 2017 were distributed and discussed. It was noted that costs for door and window repairs, and Stamp Show expenses were increases to normal expense activity. For this two-month period, income exceeded expenses by \$994.

A transfer of \$25,000 was made from the checking account to the Librarian Fund as approved at the last meeting.

Our Form 990 was completed by Taylor Roth & Co. and submitted to the IRS.

Dalene Thomas discussed the Amazon-Smile charity program where Amazon purchases can earn a one percent donation by Amazon to non-profits without affecting the buyer's cost. Purchases must be made via amazonsmile.com. RMPL is already set-up for this program. Further information will be provided in the next *Scribblings*.

OLD BUSINESS**Xerox printer/copier contract:**

Roger Rydberg reviewed a handout about our new contract with Xerox for printer/copier equipment.

New lighting for Library and 7070 Asbury:

A revised proposal to upgrade lighting for the main library and 7070 Asbury was discussed. We found new and cheaper sources for LED fixtures which will provide more efficiency and power economy. The Board approved budget funding for the project.

Public/community relations position:

A public relations proposal was presented at the last meeting. Since then, one of our members, Phillip Parrish, expressed interest in the job. It was suggested that Mr. Parrish be appointed to chair a Public Relations Committee and be asked to attend board meetings.

RMSS/RMPL Auction:

Viewing of auction lots was extended and a number of bids have been received.

The APS President and APRL Head Librarian and the Interim Denver Postmaster will be attending the show.

NEW BUSINESS

New RMPL members were approved by Board.
Meeting adjourned at 7:50 p.m.

Please note new Board Meeting time is 6:30 p.m.



Hours: Monday, Tuesday, Wednesday, Friday, Saturday 10 a.m. - 4 p.m.
Thursday 2 - 8 p.m. Closed Sundays and Holidays. Phone: (303) 759-9921

Meeting times and places sometimes change. It is best to call the library or the club to confirm the place and time. A calendar of reserved club times is kept at the library by the Operations Manager, Howard Benson. Clubs should check the calendar regularly and notify Howard at (303) 521-6216 of any changes or updates. All requests to reserve meeting time and space for philatelic-related meetings other than those listed here must be approved and scheduled by Howard well in advance.

**** July 2017****

July 1 Sat-No Meeting Summer break
Scandinavian Collectors Club

July 4 Tue Independence Day RMPL CLOSED

July 5 Wed-Aurora Stamp Club
6:00 p.m. Picnic - "Famous Dave's" BBQ (\$12 per person). Bring a Desert.

Second Saturday at the RMPL

July 8 9:00 a.m.
Program by Jim Kilbane and Frank Leitz
A tour of the lower level of 2048 S Pontiac Way, also known as 7070 Asbury

July 8 Sat-Meeting 10:00 a.m.
Mexico/Latin America Club

July 12 Wed-Meeting 7:00 p.m.
Germany Stamp Club

July 13 Thu-Meeting 1:00 p.m.
Cherrellyn Stamp Club

July 13 Thu-Meeting 6:30 p.m.
Denver Postcard Club

July 14 Fri-Meeting 7:00 p.m.
Austria-Hungary Stamp Club

July 15 Sat-Meeting 9:30 a.m.
Denver Young Collectors

July 16 Sun-No Meeting - Summer break
Great Britain and Colonies Collectors Club

July 19 Wed-Meeting 7:00 p.m.
Arapahoe Stamp Club

July 20 Thu-Meeting 6:30 p.m. (New Time)
RMPL Board of Directors-All members are welcome

July 25 Tue-No Meeting - Summer break
Rocky Mountain Stamp Show Committee

July 26 Wed-Meeting 11:00 a.m.
Denver Stamp Club

July 29 Sat-10:00 a.m. to 4:00 p.m.
Denver Metro Stamp Bourse
See page 4 for details

**** August 2017****

August 2 Wed-Aurora Stamp Club
6:30 p.m. Trading
7:00 p.m. Meeting

August 5 Sat-No Meeting Summer break
Scandinavian Collectors Club

August 5 Sat-Meeting 1:00 p.m.
Topical Philatelists In Colorado (TOPIC)

August 9 Wed-Meeting 7:00 p.m.
Germany Stamp Club

August 10 Thu-Meeting 2:00 p.m.
Cherrellyn Stamp Club

August 10 Thu-Meeting 6:30 p.m.
Denver Postcard Club

August 11 Fri-Meeting 7:00 p.m.
Austria-Hungary Stamp Club

Second Saturday at the RMPL

August 11 9:00 a.m.
Program by Steve McGill
Papermaking and the Evolution of British Stamp Paper

August 12 Sat-Meeting 10:00
Mexico/Latin America Club

August 12 Sat-Meeting 11:30
Rocky Mountain Aerophilatelic Club

August 16 Wed-Meeting 7:00 p.m.
Arapahoe Stamp Club

August 19 Sat-Meeting 9:30 a.m.
Denver Young Collectors

August 20 Sun-No Meeting - Summer break
Great Britain & Commonwealth Collectors Club

August 22 Tue-No Meeting - Summer break
Rocky Mountain Stamp Show Committee

August 23 Wed-Meeting 11:00 a.m.
Denver Stamp Club

August 26 Sat-Meeting 1:00 p.m.
Colorado Postal History Society