

Scribblings

...from the Rocky Mountain Philatelic Library



Ellengail Beuthel, Librarian...

Vol. 24 - No. 3
www.rmpldenver.org

2038 South Pontiac Way, Denver, CO 80224-2412
(303) 759-9921

May-June 2016
Email - rmpl@qwestoffice.net

IN THIS ISSUE

In Memory of Ron Mitchell	1
The President's Message.....	2
Covers From Down Under; No Way to Go But Up	4
2nd Saturday Programs	10
What's New on the Shelves	11
New Members.....	15
Donations	15
RMPL Board Meeting Summary	15
RMPL Event Calendar	16



See Greg Frantz's article on three fabulous New Zealand covers starting on page 4.

In Memory Of **RON MITCHELL**

June 20, 1940 — March 23, 2016



**RMPL President 2003-2008 Scribblings Editor
1997 - 2008, Editor/Publisher 2013 - March 2016**

By John H. Bloor

We have just lost one of the stalwarts of the Rocky Mountain Philatelic Library. Ron Mitchell, second president of the RMPL, innovative editor and publisher of Scribblings, head cheerleader for the RMPL, and all around good guy died at home, unexpectedly, of natural causes, on the morning of Wednesday, March 23rd. He was 75 years old.

Ron was born in Tulsa, Oklahoma. His father was an architect and the family moved around, from Kansas City, MO to Montreal, to Altadena, CA and, finally to Colorado in 1951, as he was involved in different construction projects. In 1958 Ron graduated from South High School and matriculated at the University of Denver, where he studied broadcast journalism and film. While at DU he met his wife, Judie. They were married in 1961.

(Continued on page 3)

Scribblings

Newsletter of the
Rocky Mountain Philatelic Library

2038 So. Pontiac Way
Denver, CO 80224
Phone: (303) 759-9921
email: rmpl@qwestoffice.net
Hours: 10 a.m. to 4 p.m. daily,
Thursday, 2 p.m. to 8 p.m.
Closed Sundays & Holidays

Editors

Library Crew

Copy Editors / Proofreaders

Don Beuthel
Ellengail Beuthel
VeraLouise Kleinfeld-Pfeiffer
Steve Schweighofer

Librarian

Ellengail Beuthel

Scribblings is published bimonthly by the Rocky Mountain Philatelic Library. The RMPL is a chartered Colorado nonprofit corporation and is an IRS designated 501(c)(3) charitable organization. Membership subscriptions over that for the regular membership, and donations of appropriate philatelic materials, are deductible for US income tax purposes. The Library is a volunteer organization. Financial donations, philatelic books, stamps, supplies, and donations of your time, are welcome.

A basic membership with the RMPL is \$25 a year, and includes checkout privileges and Scribblings. Call for more information.

Knowledge is better when shared. Consider writing an article for Scribblings about your favorite philatelic topic.

President..... John Sinski
Operations ManagerHoward Benson
Vice President Jim Kilbane
Corresponding Secretary Bill Plachte
Recording SecretaryBrian Kramer
Treasurer Tim Heins

Directors: John Bloor, Steve McGill,
Dalene Thomas, David Weisberg.
Director Emeritus: Don Dhonau.
Ex-officio member, Ellengail Beuthel

Officers and Directors may be contacted
through the RMPL.

Web page — www.rmpldenver.org

The President's Message



The Rocky Mountain Stamp Show is the largest show in the Rocky Mountain region and one of the largest and most successful in the United States. It begins May 13th and runs through May 15th. As is the case every year, RMPL will play a significant role in the success of the show. Most important to the Library will be our annual Silent Auction.

This year's auction will have about 830 lots with starting bids ranging from less than \$5 to several thousand. Many of the lots are high value U.S. stamps with minor faults at correspondingly low starting bids. You will also find better U.S. booklets, nice Canada and Newfoundland, and numerous British Commonwealth NH sets.

Of particular interest is a used Newfoundland Scott No. 15 with a catalog value of \$12,000 and an APEX certificate. We also have a mint U.S. No. 40 with an APEX certificate. Among the U.S. material are a number of very nice Shanghai overprints, especially K16, the \$2.00 overprint. These are accompanied by numerous duck stamps. Additionally, in the Newfoundland and Canada areas, we have some spectacular proof sets that came from an American Bank Note Company auction several years ago. These are all at relatively low starting bids.

Lots will be available for viewing and bidding at the library May 9th through May 12th when they will be moved to the RMPL booth at the Rocky Mountain Stamp Show at the Crowne Plaza Hotel on the northeast corner of I-70 and Chambers Road in Aurora.

Additional information can be found on the RMSS website at rockymountainstampshow.com.

I hope to see you all at the Show.

John

(Continued from page 1)

Broadcasting

Ron's broadcasting accomplishments are legion. It's hard to know where to start! He began as a disc jockey at KICN Denver, where the first record that he spun on-air was reportedly "Theme From a Summer Place", which became a favorite of his. He subsequently worked at several other Denver stations, then left Colorado in 1964 to work at WKYW in Louisville, KY and WRGM in Richmond, VA.

Ron returned to Denver in 1967 where he and his brother opened, then sold, two Chicken Delight franchises. He returned to radio, then moved to television in 1969, initially as a weekend sports anchor. From 1969 until his retirement in 1995, he worked as a general assignment reporter, covering local, national, and world news. In 1990 he traveled to Georgia in the former USSR with a contingent from Colorado. He created a documentary about the trip titled "Twenty-one Hours from Home," which won the Emmy for Best Documentary in 1990. Ron also taught classes in Journalism at the University of Denver for 20 years.

Philately

Ron started collecting stamps when he was about ten years old, and stayed with it for the rest of his life. He became interested in the so-called "Denver Eagles," and in 1974 began a collection of these postage and revenue stamps. The Eagles were printed in Denver by the Smith-Brooks Printing Company for the rebel forces in Mexico that included Pancho Villa. They are the only stamps ever printed here for a foreign government. The collection evolved into an exhibit which won gold medals at national shows, and into a book called "Mexico's Denver Printing of 1914", published (of course) by the Rocky Mountain Philatelic Library. The book won a gold medal in each of three national literature competitions in 2012. I hope that many of you have your own copy of this book, which is still available for sale at the RMPL.

After his retirement, Ron became involved with the Rocky Mountain Philatelic Library, which had come into existence in 1993. He served on the library's Board of Directors, and in 2003 was elected library president. He served for two terms (6 years) and brought the library through many changes and growing pains. He was a major force in encouraging



Ron at work at 9News

the creation of an online philatelic library catalog. More significantly, he worked hard to establish a philatelic union catalog, which would combine the catalogs of all the philatelic libraries in the United States into one online database, allowing a researcher to search for references in all of the catalogs at once. The Union Catalog now exists, and is hosted by the

American Philatelic Research Library in Bellefonte, PA. Due to Ron's interest and persistence, the RMPL was chosen as one of the test sites when the catalog was created. This catalog currently includes the holdings of eleven US libraries, one Canadian library, and the library of the Royal Philatelic Society in London. A global philatelic union catalog has also been created, which includes additional library catalogs around the world.

Scribblings is the bimonthly newsletter/journal of the Rocky Mountain Philatelic Library. It has been published since the founding of the library in 1993. Ron edited it for 12 years, from 1997 until his "retirement" from the presidency in 2008. He returned to the job in 2013, and continued with it until 2016. During his tenure as editor, Scribblings tripled in size to 16 or more pages per issue. For more than ten years, it has been published in full color. Far more than just a listing of library activities, it now contains at least one scholarly article, usually at least 4 pages in length, in each issue, as well as many shorter pieces of interest to philatelists. All of this was driven by Ron's interest in the newsletter, and his desire to make it an excellent representative of the RMPL.

The End of the Story

Ron should be writing this. His intellect and humor would have made it much more interesting than I've been able to do. His humility and reluctance to take credit for his achievements would certainly have made it shorter. It is remarkable for a person to be remembered for one major accomplishment in their lives. Ron has two. First was his success in broadcasting, for which he will be long remembered. Second was his contribution to organized philately, both in Colorado and nationally. He had much more to contribute, but he died too soon. He was a good friend to all of us and will be sorely missed.

Sources: HoranCares.com obituary, website for Horan & McConaty; 9News.com, website for Channel 9 news; sources at the Rocky Mountain Philatelic Library

Covers from Down Under; No Way to go But Up

by Gregory Frantz



These covers (Figure 1) from the South Island of New Zealand traveled record distances for unique reasons in unusual times! New Zealand was physically and psychologically the furthest of all of the British colonies from England. Its early contact with the outside world was mostly by itinerant sailing ships.



Figure 1. This article follows the routes of three covers that were not forwarded and traveled longer distances on steamships than any such covers - ever.



Four Routes

Four consistent routes to the outside world eventually evolved from Australia and New Zealand. The earliest two routes were to the east and then two additional routes to the west. From the earliest times, the city of Melbourne, on the south coast of Australia, was the terminus of shipping routes. Sydney and Wellington were also frequent ports of call. A rivalry between them continued into the mid 1870s and affected New Zealand service. Sydney was treated as a stepchild to Melbourne and there was only a “colonial” extension from Wellington to Sydney. This rivalry affected the routes, although trade and technology eventually determined the final outcome.

The Two Western Routes

From early times, New Zealand was connected to Melbourne as its route to the outside world. Mail would go west via Perth and Cape of Good Hope to Southampton, the all-sea route; or through Suez and Marseille, where travel was faster overland by railroad. The first route was favored by the sailing vessels and later by steamships, as the shorter sea portion used less coal. With all subsidized mail contracts, time was the most important factor. For the companies, that meant faster, more efficient ships and fewer stops. Fewer stops meant larger ships which could carry more coal.

The Two Eastern Routes

The Pacific could only be crossed when large steamships evolved which were capable of 5,000 mile distances. There were no coaling stations in the Pacific prior to 1865. The Pacific Mail Steamship's SS Colorado, of 4,000 tons displacement, first sailed to Hong Kong in 1867.

Early Routing

The Peninsular and Oriental Steam Navigation Company (P&O) mail service began in 1837 with routes from England to Spain & Portugal. By 1840, they expanded service to Alexandria, and soon after added service from the city of Suez to India and Ceylon. By 1850, they sailed to Singapore and Hong Kong. In 1858, the 200-mile long Suez railroad was completed allowing goods and mail to be transported on it. When the Suez Canal was opened in 1869, it didn't save time, as Egypt didn't allow night sailings. By 1860, half of the P&O steamers were screw propeller and over 2,000 tons. The larger ships were needed for the greater distances because of their capacity to carry adequate supplies of coal.

In November of 1846, Sydney recommended steam service connecting with the P&O by way of the Torres Strait and connecting at Singapore. There was a fight over the all-sea route, around the Cape of Good Hope, and the steamship/land route through Egypt. P&O's first service to Australia was an extension from Singapore, following the old sailing route via King George Sound in Western Australia to Melbourne, and then to Sydney.



Figure 2. Crosbie Ward, New Zealand's postmaster general in the late 1850s.

The northern route was preferred for mail going to Sydney. Nothing much happened until after the Crimean War. By 1859, P&O accepted a contract for a monthly service via Mauritius to Australia. They soon abandoned Mauritius for Ceylon, creating the northern route. Ceylon has remained their hub ever since. New Zealand's widely scattered communities were connected in 1859 by a domestic service, with a colonial connection to Sydney Australia.

Panama Route

The New Zealand Company proffered a line through Panama via Tahiti, connecting with the West India Royal Mail. In 1858, the Post Office opposed the additional expense of subsidizing a second service to the Far East.

Crosbie Ward, postmaster of New Zealand, was sent to London to negotiate a deal. Being unsuccessful with the government, he signed a contract with what became the "Panama New Zealand and Australian Royal Mail Company."

Sydney joined, with the proviso that it be the Western terminus. The route was finally established in 1866, first sailing in June. Four vessels were built, having 350 to 400 horsepower and weighing 1456 to 1767 tons. This service lasted 2½ years, but finally failed due to a lack of passenger traffic. The company had excellent monthly service records, yet in the first 16 voyages only carried 500 passengers. In its time of operation, it carried the majority of the mail and was 4-6 days faster than the P&O. The first named, and the last ship to

ARRIVAL

OF THE

STEAMSHIP RAKAIA,

WITH THE

ENGLISH MAIL

OF

SEPTEMBER 2,

VIA PANAMA.

[BY ELECTRIC TELEGRAPH.]

(FROM OUR OWN CORRESPONDENT.)

SYDNEY, MONDAY.

The Panama and New Zealand Company's s.s. Rakaia, Captain Bird, arrived here at midnight. She left Panama on the 24th of September, and brings European news to the 2nd September, and telegraphic messages from England via New York to the 11th September; and San Francisco dates to the 10th September. The passage was not accomplished in contract time in

Figure 3. Notice in the Melbourne Argus Tuesday, November 5, 1867. Rakaia arrived October 25th. She sailed from Panama September 24th with 19 passengers, nine of whom went on to Melbourne.



Figure 4. Cover No. 1 - Riverton to Rio de Janeiro, Brazil.



Figure 5. The SS Rakaia

sail, was the Rakaia in December 1868 (Figures 3 & 4).

**Cover No. 1
Riverton to Rio De Janeiro**

Riverton, in Southlands New Zealand, is so far down under it compares to only a few towns in the most southern civilizations on earth, including the Falklands. It and the towns around Cape Horn were started as whaling stations. When Gold was discovered in the Riverton area about 1850, it blossomed into a real town. See the Figure 11 map on page 8 for locations of the towns and cities mentioned in this article.

The cover (Figure 4) was carried by SS Rakaia shown in Figure 5, 400hp and 1767 tons. The cover is endorsed via Jamaica which is crossed out. The sender may have seen this in the company’s advertisement, “via Kingston Jamaica and Haiti to St Thomas.” Jamaica was a coaling station and a Caribbean inter-island stop, but never a homeward or outbound port of call.

This letter (Riverton cancel numeral “6” to Invercargill / SOUTHLAND b/s) sailed up the east coast by local steamer, arriving at Wellington on September 9, 1866 via Tahiti; then arrived at Panama on June 10, 1866; at Southampton on October 29 (London transit 29 Oc 66); then by Royal Mail Steamship SS Duro via Azores or Cape Verde with Blue arrival on January 2, 1867 in Rio de Janeiro (Figure 6).

This cover holds the record distance for mail by steamship. It went by railroad for the Panama crossing, and then to Southampton and London. It traveled through more degrees of latitude than the other two covers.

San Francisco Route

With the opening of the US transcontinental railroad in 1869, New Zealand considered a route to San Francisco. This would open up trade with both the US and Canada. New Zealand postmaster Vogel

Riverton to Rio De Janeiro		
First leg by local steamer to Wellington	9 days	500 miles
Second leg Wellington to Panama	27 days	8,191 miles
Third leg Panama St Thomas to London	23 days	5358 miles
Fourth leg London to Rio	66 days	6959 miles
Total	125 days	21,008 miles

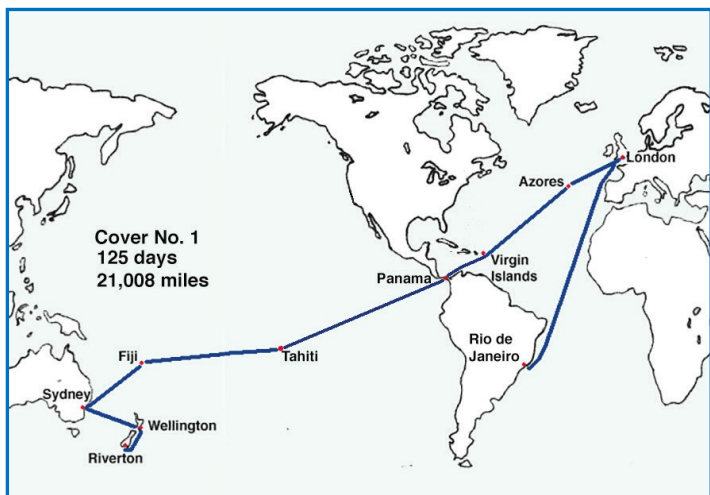


Figure 6. Cover No. 1 shown in Figure 4 took the route shown by the blue line above, from Riverton, Southlands New Zealand, to Rio de Janeiro, Brazil in 1866 and 1867. It was the longest route ever taken by a cover by steamer which was not forwarded.



Figure 7. Sir Julius Vogel served as Postmaster General in New Zealand during the early 1870s.

(Figure 7) worked on contracts with the Hall Line. Hall maintained a monthly sailing schedule to Hawaii only from April 1870 to March 1871. Hall went out of business and New Zealand replaced them with W. H. Webb. Webb's ship *Nebraska* made the last voyage in April 1873.

More mail exists for this route than via Panama. No long term contracts resulted until October 1875, when a contract with Pacific Mail Steamship Co.

(PMSS) was signed. PMSS sailed every four weeks for Wellington and Sydney, then via Hawaii and Fiji to San Francisco.

**Cover No.2
Dunedin to Cape Town**

Dunedin is a southern coastal city in the south island, at 45.86° south latitude and 170° east longitude. Our cover (Figure 8) left on the SS City of Melbourne on September 1, 1870, and arrived at San



Figure 8. Cover No.2—Dunedin to Cape Town

Dunedin to Cape Town		
First Leg: to Wellington, Fiji, Hawaii, San Francisco	42 days	9,685 miles
Second Leg: San Francisco to New York City	12 days	3,000 miles
Third Leg: New York to London	13 days	3,060 miles
Fourth Leg: London to Cape Town	25 days	6,058 miles
Total	92 days	21,803 miles

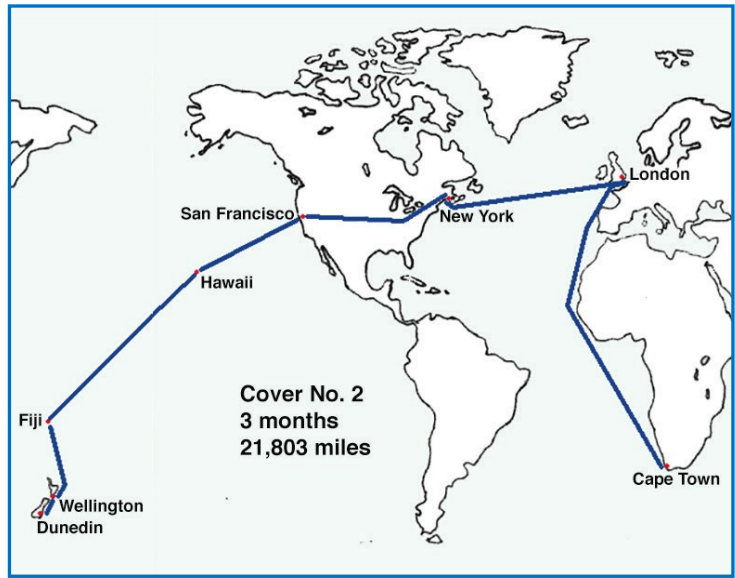


Figure 9. Cover 2 travelled one of the longest non-forwarded distances of record

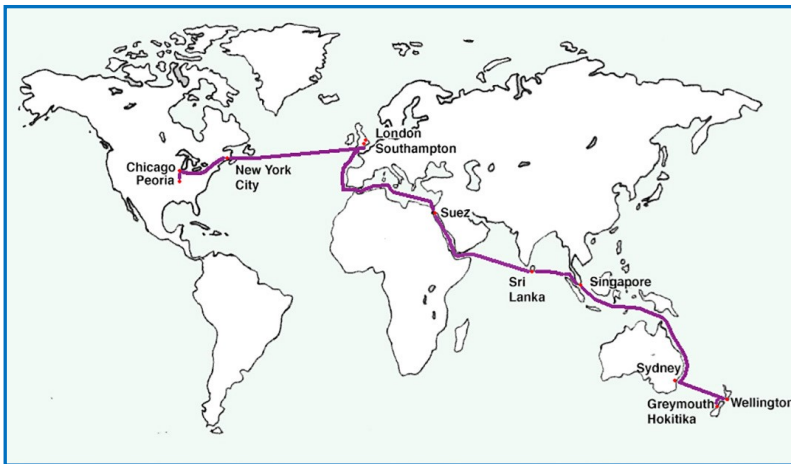


Figure 10. The Suez route



Figure 11. A map of key points of interest

San Francisco Oct 7. It then arrived at London on October 25 (red cds), left London by the Union Steam Ship SS Briton for the Cape, where it arrived on November 30, 1870. Total time in transit was three months making it one of the longest non-forwarded trips of record. The first leg, Dunedin→ Wellington→ Fiji→ Hawaii→ San Francisco covered 9,685 miles. It then went overland to New York, a distance of 3,000 miles. New York to London added 3,060 more miles, and London to Cape town 6,058 miles (Figure 9). Total distance covered—21,803 miles!

Cover No. 3 Takes the Suez Route (Figure 10)

Hokitika was a gold mining center from 1864 and, at best, had bi-weekly mail service. Cover No. 3 (Figure 12) traveled north to Greymouth, arriving on December 18, then to Wellington and on to Sydney (arriving December 30). From there it was carried by the P&O with stops at Singapore, Ceylon, Suez, South Hampton (February 24), and London (February 25). The New York red cds is unclear as to date. From New York it went to Chicago with the final leg to Peoria (no Illinois dates). The cover was likely bagged in Sydney and stayed with the P&O to London.

Hokitika to Peoria, Ill.		
First Leg: By local steamer to Wellington	4 days	240 miles
Second Leg: Wellington to Sydney	12 days	1,300 miles
Third Leg: Sydney to London	70 days	15,325 miles
Fourth Leg: London to Peoria	16 (?) days	4,000
Total	Approximately 102 days	20,865 miles

Figure 12. Cover No.3.
Hokitika, New Zealand to Peoria, Illinois
(14 Dec 1873 arrived Mar 1874).



This cover falls in the period when the startup Pacific steamers failed for lack of passengers, and before the regular Pacific Mail Steamship company (PMSS) restarted the New Zealand service, on October 1875.

The SS Nubia

SS Nubia, a P&O ship launched in February 1854 for passenger service (Figure 13), was turbine driven and weighed 2200 gross tons. It was only in mail service during 1872-1873. It had a storied past, and sometime in 1873 it was deemed unfit for service and laid up two months for repairs. This December 1873 Cover No. 3 likely was carried by the SS Nubia after the repairs were completed.

Permanent Record Distances

If Cover No. 3 could have gone via San Francisco (the route was closed in April 1873 due to lack of steamship service), or even via the U.S. / Brazilian mail service, it would not have transited London. It would also have lost its third place ranking for longest non-forwarded distance traveled by mail at 20,865 miles.

All three covers are products of uncertain times and entrepreneurial efforts to speed the delivery of mail around the world. Those efforts ultimately lead to better routing and dramatically faster services. As a result, these three covers are likely to be permanent record holders for non-forwarded mail-on earth.

A Final Note About Franking & Distances

In 1863, the colonial rate was raised from 6 to 12 pence. Then, early in 1868, the rate was reduced back to 6p. I have seen some New Zealand covers with the old rate for a few years after the change. This could be for lack of local information, or a double weight letter.

All miles are statute and from different sources; most from maritime or philatelic sources and are subject to correction.

References

- E. Mowbray Tate, "Transpacific Steam 1867 – 1941," Cornwall Book, NY, London, Toronto, 1986 p 49-50
- Prestige Philately, "The mark Benvie Collection" May 2011
- Robertson, Howard, "Carrying British Mails Overseas," New York University Press, 1964

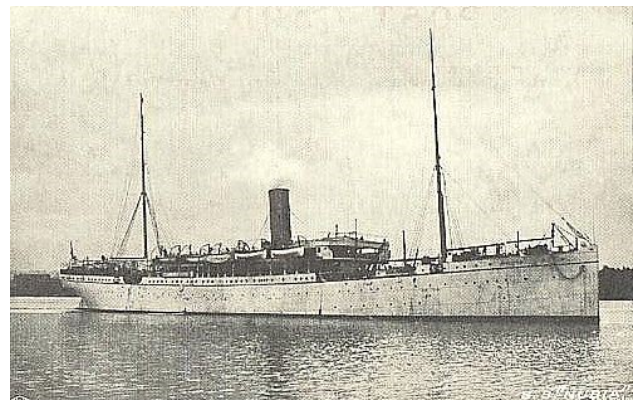


Figure 13. The SS Nubia

SECOND SATURDAY PROGRAMS AT THE LIBRARY

Second Saturday programs are sponsored by the RMPL and attract a friendly group of folks who are interested in a specific subject, or who are interested in learning more about an area of philately that may be new to them.

Contact Jim Kilbane if you would like to present a program.
His email is aurora_80017@yahoo.com

May 14, 9 a.m.

The Czechoslovak Library at The RMPL
To Be Held at the RMSS in the Copper Mountain Room

Presentation to be given by Lou Svoboda

There is a rich resource available at the RMPL that most people do not even know about. So, if you have need for information about Czechoslovak, Czech, Slovak, Carpatho-Ukraine, Bohemia & Moravia, or Eastern Silesia philately, this could be your spot. I will be telling you what is available there, and how you can use it.



June 11, 9 a.m.

DDSG Danube Steam Navigation Company
by Greg Frantz



An introduction with a brief history of the company, its founding, and its area and scope of operations.

There will be illustrations and descriptions of covers, showing the six different stamp issues. A selection of cancels and ship handstamps will be shown, and we will end with destination covers and some mixed franking.

The RMPL at New York 2016



You have probably all heard that the RMPL will have a booth at the World Stamp Show in New York City from Saturday, May 28th through Saturday, June 4th.

If you are at the show, please stop by the table and say hello. Bring a friend along and let them know what we do – perhaps they will join!

If you have an hour or so to spare, we could also use more volunteers to help staff the table. If you can, let us know ahead of time (email to John Bloor: aerophil59@yahoo.com). If you're not sure about volunteering but are at the show, stop by and we can work out a time.



WE HOPE TO SEE YOU IN NEW YORK

WHAT'S NEW ON THE SHELVES

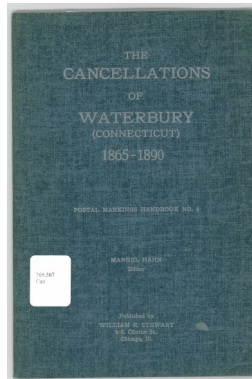
UNITED STATES

The Cancellations of Waterbury (Connecticut) 1865-1890, edited by Mannel Hahn

Durland: Standard Plate Number Catalog (1971-1972), published by Sterling Stamp Company, Inc.

Nebraska Revenue Stamps, by Kenneth Pruess

Penalty Overprinted Stamped Envelopes, Wrappers, and Postal Cards of the United States and Possessions, edited by Thomas A. Galloway and Robert Derrick



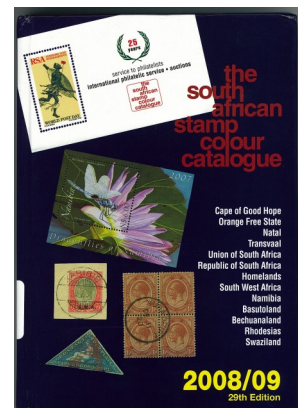
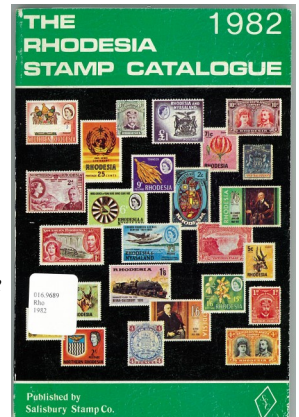
AFRICA

Postage Stamps of British Central Africa, by Fred J. Melville

The Rhodesia Stamp Catalogue (1982), published by Salisbury Stamp Co.

The South African Stamp Colour Catalogue, 2008/2009 Edition

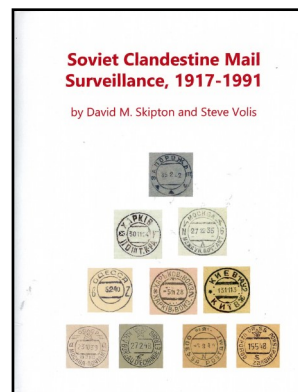
South of the Zambesi: The Post Offices and Agencies of Southern Rhodesia (Later Rhodesia) and Zimbabwe from 1888 to 2001 and their Postmarks, by Hal Hoyte and Jane Lashbrook



ASIA

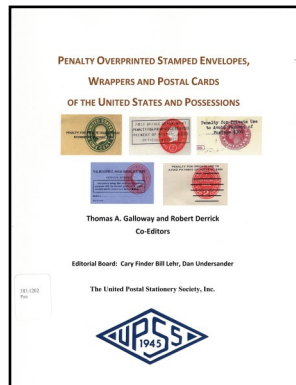
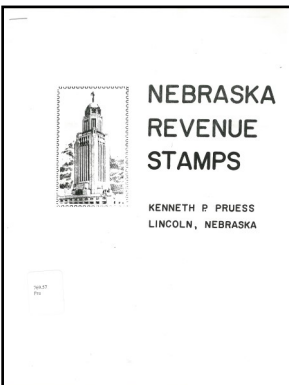
Commemorative Space Covers from the Kiev Collectors Club 1959-1989, by James G. Reichman

Nepal Postage Stamps Catalogue 1881-2004, compiled and published by Chandra Jumar Sthapit and Deepak Manandhar



Socialist Republic of Vietnam: Postage Stamps 1945-1975 Timbres Poste, Republique Socialiste du Vietnam, published by Xunhasabe

Soviet Clandestine Mail Surveillance, 1917-1991, by David M. Skipton and Steve Vollis



Philatelic Arts Presents the 2007 PNC Guide: A Guide to Collecting Plate Number Coil Stamps for Collectors of Used Singles, Strips and Covers

Plate Blocks: The Stamp Collector's Edge, by Richard L. Lazorow

The Postal Service Guide to U.S. Stamps (2008), published by the U.S. Postal Service

Scott U.S. First Day Cover Catalog & Checklist (2005)

Uniontown, Alabama Postmaster's Provisionals, by Francis J. Crown, Jr.

United State Postage Stamps Illustrated and Identified, Seventh Edition 1947, published by Scott Publications, Inc.

AUSTRALIA & OCEANIA

The Australian Commonwealth Specialists' Catalogue, Volumes 1, 2, & 3, published by Brusden-White (Victoria, Australia)



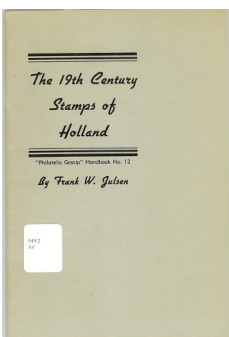
Australian Numeral Cancellations: A Compendium, by H. M. Campbell

COLORADO

Colorado Zip Code Directory April 1990, published by the United States Postal Service

The Denver Stamp Club Presents: Colorado Local Precancel Types, by F.W. Cummings and M.W. Jackson

EUROPE



The 19th Century Stamps of Holland, by Frank W. Julsen

Catalogue de Timbres-Poste: Quatre-Vingt-Onzième, Année, Tome I: Départements d'Outre-Mer, Emissions Générales de Colonies, Europa-Andorre-Monaco-Nations Unies (1987), published by Yvert & Tellier

Danish Øre Bicolor Issues: A Primer, by Peter Bergh

Great Britain and Ireland: Catalogue of Internal Air Mails 1910-1941, compiled by N.C. Baldwin



Heligoland: A Key to the Identification of Originals & Reprints, by Robert T. Pollard

Notes on Line Engraved British Stamps, by Harry Tahl

Les Marques Postales Prephilateliques de la Belgique, 1982 Edition, by Lucien P. Herlant

Michel Skandinavian/Baltikum [Catalogue] (2003)

La Patrimoine de la Poste [The Heritage of the Mail]

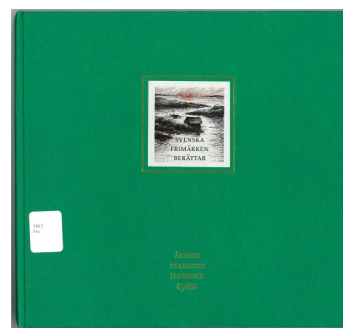
Le Patrimoine du Timbre-Poste Français [The Heritage of French Stamps]



Polskie Znaki Pocztowe, volumes I through V, published in Warsaw in 1960

Postage Stamps of the British Empire (1945), published by H.E. Harris

Precancel Stamp Society Catalog of Precancels of France, Algeria, Tunisia and Monaco



Spezialkatalog uber die Briefmarken der Schweiz und von Liechtenstein (1974), published by Zumstein & Cie

Stockholm Postmuseum Eesti Post 11/6/1980

Svenska Frimärken

Berättar: Yearbook 87/88

Yvert & Tellier Catalogue Mondial de Cotation, Tome 1, Timbres de France, 2007

SOUTH AMERICA & CARRIBEAN

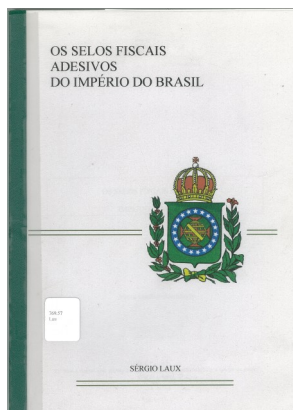
Acre: Selecciones Filatélicas, Tomo 13, published by Sociedad Filatélica Argentina

Estampilhas Fiscais Estaduais e Municipais: Amazonas, Para Maranhão, Piauí, by Luiz Reginaldo Fleury Curado



Estampilhas Fiscais Municipais do Brasil, by Luiz Reginaldo Fleury Curado

O Imposto do Selo no Brasil: República dos Estados Unidos do Brasil, Estampilhas Federais, Volumes 1-B, 1,C, 2-14, by Luiz Reginaldo Fleury Curado

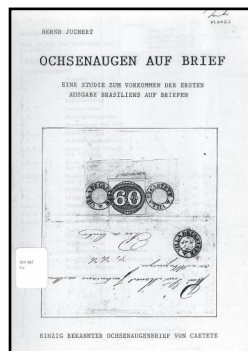


The Congress Book (2011, 2012, 2013, and 2015), published by the American Philatelic Congress

Fleeing from the Führer: A Postal History of Refugees from Nazis, by Charmian Brinson & William Kaczynski

Fremdwörterbuch der Philatelie [Philatelic Dictionary of Foreign Words], by Preben Kylling

How to Specialize in Stamp Collecting, by Bill Olcheski



La Timbrologie Haitienne 1881-1954, by Léon Montès

Ochsenaugen auf Brief: Eine Studie zum Vorkommen der Ersten Ausgabe Brasiliens auf Briefen, by Bernd Juchert

Os Selos Fiscais Adesivos do Império do Brasil, by Sérgio Laux

Jean de Sperati "L'homme qui Copiait les Timbres: Biographie", [includes a separately bound English translation of the text], by Lucette Blanc-Girardet



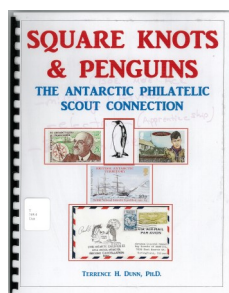
The Lure of Stamp Collecting, published by Globus Stamp Co.

Selos Fiscais Brasil, by Luiz Reginaldo Fleury Curado

Minkus New World Wide Stamp Catalog (1975, 1976), Volume One

TOPICAL

Butterfly and Moth Motifs: A Checklist of Butterfly and Moth Images on Postage Stamps of the World, Volumes I and II, by Jack R. Congrove



Postage Stamps in the Making: A General Survey of the Practices and Processes Employed in the Manufacture of Postage Stamps: Volume One, by Fred J. Melville

POSTCARDS

The American Postcard Guide to Tuck, by Sally S. Carver

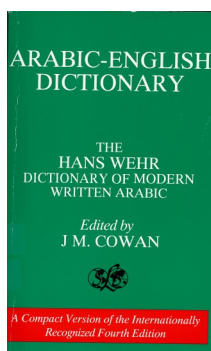
The Olympic Stamp Book, by Morten Berner

Square Knots & Penguins" The Antarctic Philatelic Scout Connection, by Terrence H. Dunn

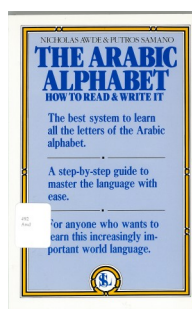
The Postcard Price Guide: A Comprehensive Reference, by J.L. Mashburn

MISCELLANEOUS

The Arabic Alphabet: How to Read & Write It, by Nicholas Awde & Putros Samano

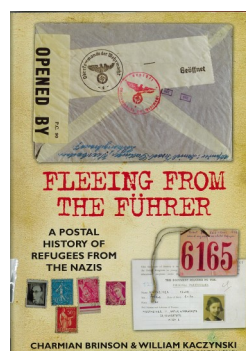


Arabic-English Dictionary; The Hans Wehr Dictionary of Modern Written Arabic, edited by J.M. Cowan



AUCTION CATALOGS

The Brigham Collection of Canada: Part VIII, Edward VII, 1903-1911; Part IX: Queen Elizabeth II (1953-1995), catalog for a Brigham Auctions Ltd. auction January 2016



California Postal History, Catalog for a Richard Frajola auction December 1985

The Charles W. Adams Collection of United States and Canada, catalog for a Robert A. Siegel auction November 2015

Civil War Postal History, catalog for a Nutmeg auction April 1999

The "Colonel Harrie Evans" Collection: Australian Colonies and Pacific Islands, catalog for a Premier Philately auction May 2002

The Don David Price Iconic Collection of United States Bicolored Postage Issues of 1869, 1873 & 1901, catalog for a Robert A. Siegel auction March 2016

The Drs. Joanne and Edward Dauer Collection of Australian States and Commonwealth, catalog for a Spink auction February 2016

The Gary Peters Collection of Hawaii, catalog for a Shuyler Rumsey auction March 2015

Internationale Zeppelin & Airmail Auktion, catalog for an Auktionenhaus Felzmann auction March 2015

The "Harold B. Nogle" Collection: the Origins and Progression of Plate Number Singles Imprint Strips & Plate Blocks, catalog for a Daniel F. Kelleher auction January 2016

The "Larkspur" Collection of Quality United States Stamps Including Revenue Issues, catalog for a Daniel F. Kelleher auction January 2016

Outstanding United States Stamps, catalog for a Robert A. Siegel auction March 2016

Patentanwalt Emil Hoffmann: Hannover, catalog for a Heinrich Köhler auction September 2000

Rhodesia: The 1910-1913 Double Head Issue, catalog for a Frasers auction April 2000

The Robert Bowman Collection of Superb United States Stamps, catalog for a Robert A. Siegel auction September 2015

The Steven Walske Collection of United States-France Transatlantic Mail, catalog for a Robert A. Siegel auction March 2016

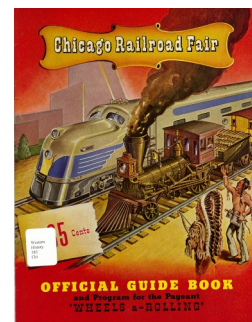
The Tito Giamporcaro Collection of Great Britain's Mulreadys and Their Caricatures and British Printed and Hand-Illustrated Envelopes, catalog for a Robert A. Siegel auction October 1996

United States 1847-1869 Issues Featuring the Kenneth D. Gilbert Award-Winning Exhibit Collection, catalog for a Robert A. Siegel auction September 2015

United States Revenues and Federal Hunting Permits Featuring the Collection of William B. Webster, catalog for a Robert A. Siegel auction March 2016

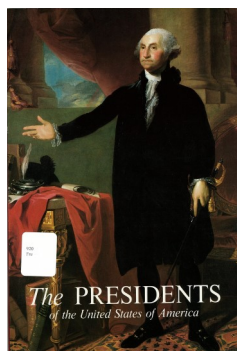
United States Stamps, catalog for a Robert A. Siegel auction October 2015

**NON-PHILATELIC
(Railroads)**



Chicago Railroad Fair: Official Guide Book and Program for the Pageant "Wheels a-Rolling"

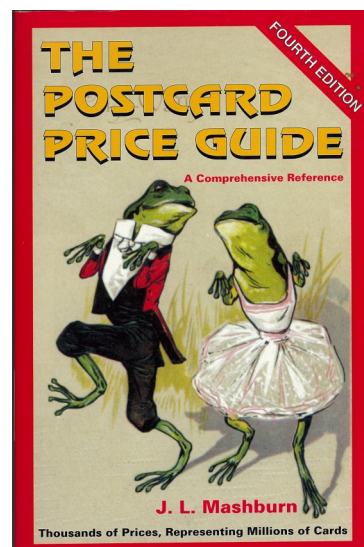
NON-PHILATELIC



The Great Geographical Atlas, published by Rand McNally & Company (1989)

Presidents of the United States of America [through Reagan], by Frank Freidel

Ukrainian/English, English/Ukrainian Dictionary, by Leonid Hrabovsky



Judging a book by its cover might attract a few readers!

NEW MEMBERS

The RMPL is pleased to welcome the following new members who have joined the library since January 1st.

- ◆ James Canavan, Denver, CO - Collects Mexico, Germany, Ireland, and Olympics.
- ◆ Doug King, Lakewood, CO
- ◆ Thomas Muller, Denver, CO - General Philatelic Collector
- ◆ Carole Nations, Estes Park, CO - Collects U.S.A.
- ◆ Charles F. Phillips, Aurora, CO - Collects U.S.A.
- ◆ Richard Porto, Centennial, CO - U.S. Mint Sheets



DONATIONS

The library thrives on the enthusiasm and generosity of its members. The following members made donations (alphabetized by first name) to the library (January through March). We thank each and every one who has contributed.

Bill Smith	John Seidi
Carl Love	Joseph Hunter
Carol Nations	Julie Lays
Charles Freise	Larry Nix
Claus Nielsen	Nolan Flowers
Collectors Club of Michigan	Owen Robb
Diane Kelly	Pat McNally
Dick Seeley	Roger Cichorz
Donald Dhonau	Roe Emery
Donald Engelhardt	Russell Powers
Douglas Moore	SCC
Dwane Hansen	Scott Pittenger
Elizabeth Douglass	Stephanie Trotter
Gary Starkey	Stephen Pero
Glenda Norblom	Steve White
Gregory Frantz	Terry Murphy
Jack Congrove	Thomas Fair
James Basso	Valerie Agnew
James Cavavan	William Blankemeier
James Fredlund	William Clair
James Reichman	William Crabbs
John Nehis	

RMPL BOARD MEETING SUMMARY

Meeting of March 17, 2016

Prepared by President John Sinski
Meeting called to order at 7:10 p.m.

All Board members present except Roe Emery, Brian Kramer, and Bob Blatherwick. Other attendees included Ron Mitchell, Tim Heins, Steve Nadler, Don Beuthel, Don Dhonau, Lewis Bussey, Bill Crabbs, Rich Palestro, Roger Rydberg, and Bill Plachte. The January Board Minutes were distributed and approved.

Resignations & Appointments

The resignation of Corresponding Secretary Roe Emery was announced. The nomination of Bill Plachte to replace Roe for the remainder of his term met with unanimous approval. The retirement memorandum of our Treasurer Bob Blatherwick was presented and approved. Tim Heins was nominated to replace Bob for the remainder of his term which met with unanimous approval.

Financial Affairs

Steve Nadler presented the Finance Committee's "Financial and Accounting Policy Recommendations to the Board." Comments were solicited for future Board meetings. David Weisberg presented a status report on preparations for the Silent Auction at the RMSS.

A \$2,000.00 donation from the Collectors Club of Michigan was announced.

Old Business:

A final draft of the ATA/RMPL Agreement for Videos was presented and unanimously approved. Ron Mitchell gave an update on the approaching RMPL participation in WSS-NY 2016.

New Business:

Lewis Bussey presented a study entitled "Rocky Mountain Philatelic Library Expansion." It included plans for added library shelving. It also planned the connection of our two buildings by adding usable space between them. Functional rearrangements and modifications were also discussed to meet our long term goals. This will be revisited by the Board as finances become available.

Don Dhonau suggested the addition of a Youth Activities Director as a member of our Board.

New RMPL members were approved by Board.
Meeting adjourned at 9:15 p.m.

**For the Record: Next Board Meeting:
Thursday, May 19, 2016.**



What's Happening at the RMPL...

Hours: Monday, Tuesday, Wednesday, Friday, Saturday 10 a.m. - 4 p.m.
Thursday 2 - 8 p.m. Closed Sundays and Holidays. Phone: (303) 759-9921

Meeting times and places sometimes change. It is best to call the library or the club to confirm the place and time. A calendar of reserved club times is kept at the library by the Operations Manager, Howard Benson. Clubs should check the calendar regularly and notify Howard at (303) 521-6216 of any changes or updates. All requests to reserve meeting time and space for philately related meetings other than those listed here must be approved and scheduled by Howard well in advance.

May 2016

- May 4** Wed-Meeting-Aurora Stamp Club
6:30 p.m. – Trading
7:00 p.m. Meeting (RMPL Meeting Room)
- May 7** Sat-Meeting-10:00 a.m.
Scandinavian Collectors Club (RMPL Meeting Room)
- May 9 through May 11** 10:00 a.m. to 4:00 p.m. and
- May 12** Thurs 2:00 p.m. to 8:00 p.m.
RMSS Auction Lot inspection at RMPL
- May 10** Tue-Meeting-7:00 p.m.
Collectors Club of Denver (RMPL Meeting Room)
- May 11** Wed-Meeting-7:00 p.m.
German Stamp Club (RMPL Meeting Room)
- May 12** Thurs-Meeting-2:00 p.m.
Cherrellyn Stamp Club (RMPL Meeting Room)
- May 12** Thurs-Meeting-6:30 p.m.
Denver Postcard Club (RMPL Meeting Room)
- May 13 through May 15** Rocky Mountain Stamp Show & RMPL Auction
- May 13** Fri-Meeting-7:00 p.m.
Austria-Hungary Stamp Club
(Cancelled-this meeting only)

Second Saturday to be held at ROMPEX

May 14 9:00 a.m. (See Show Program for location)
Program by Lou Svoboda
The Czechoslovak Library at the RMPL

- May 14** Sat-Meeting-10:00 a.m.
Mexico/Latin America Club (RMPL Meeting Room)
- May 15** Sun-Meeting 2:00 p.m.
Great Britain and Commonwealth Collectors Club
(Cancelled-this meeting only)
- May 19** Thurs-Meeting-6:30 p.m.
RMPL Board of Directors
All members are welcome
- May 21** Sat-Meeting-9:30 a.m.
Denver Young Collectors (RMPL Meeting Room)
- May 25** Wed-Meeting-12:00 p.m.
Denver Stamp Club (RMPL Meeting Room)
- May 30 Mon-Memorial Day Library Closed**

June 2016

- June 1** Wed-Meeting-6:30 p.m.
Aurora Stamp Club (RMPL Meeting Room)
- June 4** Sat-Meeting-10:00 a.m.
Scandinavian Collectors Club
(RMPL Meeting Room)
- June 8** Wed-Meeting-7:00 p.m.
German Stamp Club (RMPL Meeting Room)
- June 9** Thurs-Meeting-2:00 p.m.
Cherrellyn Stamp Club (RMPL Meeting Room)
- June 9** Thurs-Meeting-6:30 p.m.
Denver Postcard Club (RMPL Meeting Room)
- June 10** Fri-Meeting-7:00 p.m.
Austria-Hungary Stamp Club (RMPL Meeting Room)
- Second Saturday at the RMPL**
June 11 9:00 a.m.
Program by Greg Frantz
DDSG Danube Steam Navigation Company
- June 11** Sat-Meeting-10:00 a.m.
Mexico/Latin America Club (RMPL Meeting Room)
- June 11** Sat-Meeting-11:30
Rocky Mountain Aerophilatelic Club
- June 14** Tue-Meeting-7:00 p.m.
Collectors Club of Denver (RMPL Meeting Room)
- June 18** Sat-Meeting-9:30 a.m.
Denver Young Collectors (RMPL Meeting Room)
- June 19** Sun-Meeting-2:00 p.m.
Great Britain and Commonwealth Collectors Club
(RMPL Meeting Room)
- June 22** Wed-Meeting-12:00 p.m.
Denver Stamp Club (RMPL Meeting Room)
- June 28** Tue-Meeting-7:30p.m.
Rocky Mountain Stamp Show Committee
(RMPL Meeting Room)

The RMPL is open six days a week, six hours a day. Call before visiting on snow days.