

IN THIS ISSUE

The State of the Library

Full Steam Ahead	1
RMPL Board Meeting	
Summary	4
How to Remove	
Adhesive from	
Self-Adhesive	
Stamps	5
Volunteer Appreciation	
Party	6
Country Lot Sale	8
RMPL Publications	
Available	8



RMPL Auction	
Updates	9
Show News	10
What's New on the	
Shelves	11
2nd Saturday	
Programs	14
RMPL Videos	14
New Members	15
Donations	15
Library Calendar	16



Full Steam Ahead ...

By John Sinski, RMPL President

Well, there's a lot to talk about, so let's get started!

As of this writing (the first week of December), we have an agreement with our mortgage holders for the payoff amount on the 2048 So. Pontiac Way property, our 3,000 sq. ft. "annex" where a dozen philatelic clubs and organizations hold their meetings. We also house our philatelic newspaper archive, auction catalogs, slide programs, libraries for five local and national societies, a "map room," RMPL Special Collections, a conference room suitable for small meetings, and a room with a commercial Xerox machine (used for printing *Scribblings* and seven other philatelic newsletters and journals.)



What a way to start 2016! All three properties shown above form the campus of the library. The garden area (top) is to the right of the building at 2048 So. Pontiac Way. There was a party when we burned the mortgage on the building at 2038 So. Pontiac Way on our 10th anniversary. It looks like it's party time again!

The mortgage holder of the building and the lot next to it are preparing the paperwork for transfer of the properties to us. We had planned to pay them off in 15 years, but we have managed to do it in six.

There should be a meeting to finally complete the payoff before the first of the year. By the time you read this, we should be done with mortgages!

Auction results for the Large Lots Auction in October are final, at \$20,865. The auctions in May and October 2015 have enabled us to clear the mortgage, as noted above. This was also supported by sales of stamps and supplies that were donated to us. Donations are continuing to come in.

(continued on page 2)

Scribblings

Newsletter of the Rocky Mountain
Philatelic Library

2038 So. Pontiac Way
Denver, CO 80224

Phone: (303) 759-9921

email: rmpl@qwestoffice.net

Hours: 10 a.m. to 4 p.m. daily,

Thursday, 2 p.m. to 8 p.m. Closed Sundays & Holidays

Editor

Mike Milam

mdmilam@yahoo.com

Production Manager/ Layout

Ron Mitchell

wmmitchell@comcast.net

Copy Editors/ Proofreaders

Don Beuthel

Ellengail Beuthel

VeraLouise Kleinfeld-Pfeiffer

Steve Schweighofer

Librarian

Ellengail Beuthel

Scribblings is published bimonthly by the Rocky Mountain Philatelic Library. The RMPL is a chartered Colorado nonprofit corporation and is an IRS designated 501(c)(3) charitable organization. Membership subscriptions over that for the regular membership, and donations of appropriate philatelic materials, are deductible for US income tax purposes. The Library is a volunteer organization. Financial donations, philatelic books, stamps, supplies, and donations of your time, are welcome.

A basic membership with the RMPL is \$25 a year, and includes checkout privileges and Scribblings. Call for more information.

Knowledge is better when shared. Consider writing an article for Scribblings about your favorite philatelic topic.

President John Sinski
Operations Manager Howard Benson
Vice President Jim Kilbane
Corresponding Secretary Roe Emery
Recording Secretary Brian Kramer
Treasurer Bob Blatherwick
Directors: John Bloor, Steve McGill, Dalene Thomas, David Weisberg. Director Emeritus: Don Dhonau. Ex-officio member, Ellengail Beuthel

Officers and Directors may be contacted through the RMPL.

rmpldenver.org



RMPL President John Sinski.

The new website is up and running. The event calendar is current and can be accessed from the start page. By clicking on the month, date or activity, the full calendar can viewed. Click on an individual activity to view specific details.

We have reorganized our sales area. The five-cent and ten-cent worldwide binders were merged, at the bargain five-cent rate. More countries now have their own binder.



Frank Leitz is one of the volunteers who work to keep the Sales Department books filled.

The U.S. sales area was also reorganized, moving the back room five-cent boxes up front with the rest of the material.

We have been working on opening more shelf space for both books and periodicals. This includes moving slide programs from the back room of the original library to the lower part of the building at 2048 So. Pontiac Way.

(continued on page 3)

Our video programs have expanded thanks to the work of Joe Lanotte and others who have assisted him in their production. Our efforts were recognized by APS, and our videos will be shown at NY2016! The next video, *Security on Stamps, Part 2* will be completed soon.

Unfortunately, we have lost some members to death or to moves this year. But we have also picked up new members, so our total membership has been fairly consistent. We have also gained several new volunteers for front desk duty and the stamp program crew.

We will have a table at NY2016, manned by Ron Mitchell. We hope he will get some help at the library's booth by other members also attending the show, so let's volunteer for a couple of hours one day you're in New York. Call the RMPL for Ron's contact information.

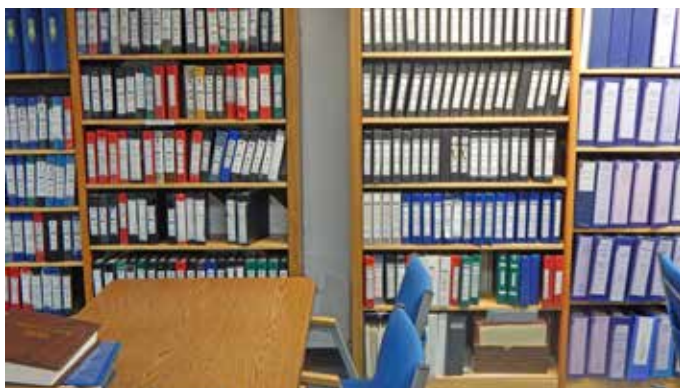
Besides free books and a live demonstration of how our library works, the booth will include:

- Stamp kits to give away to youngsters
- All the RMPL publications we have for sale
- A DVD with all of our videos for sale
- A postcard that tells about the library
- A special edition of *Scribblings*
- A nice gift for all new members and current members who stop by the table and sign the guest register
- A souvenir sheet commemorating the RMPL's presence at the show

It has been a busy year, but we're continuing strongly into 2016. Full steam ahead!

I'll leave you now with more pictures of our reorganized sales area.

John



Many individual countries now have their own sales books, instead of being lumped in together with other countries under a single letter. The 5¢ stamps are in 120 large, blue binders. The rule of thumb we followed was to price any stamp that cataloged up to 50¢ at a nickel, and stamps cataloging up to \$1.00 at 10¢. Now they are all just 5¢ Here, Glenn Jowers is looking for stamps for his collection.



Jack Van Ens is sitting in front of a new set of bookcases that house the 5¢ used U.S. stamps that were kept in the back room. All the "For Sale" stamps are now out front along the east side of the main library.



Left: There are more than 275 smaller binders with "priced as marked" stamps. The black and blue binders on the right side of the picture are all United States.

Above: This view gives an idea of the size of the RMPL's "stamp store."

RMPL BOARD MEETING SUMMARY

Meeting of November 19, 2015
Prepared by President John Sinski

The meeting was called to order at 7 p.m. All Board members were present, except for Howard Benson, Bob Blatherwick, and Dalene Thomas. Tim Heins and Steve Nadler were non-board members present.

September minutes were not available.

FOR THE RECORD:

Next Board meeting: Thursday, January 21, 2016 at 7 p.m.

This will be our official annual meeting and will include committee reports from all departments. Here is a chance to get a feel for the operations of the library. All members are welcome to attend.

Financial Report:

- The October 31, 2015 balance sheet and the September/October income/expense reports were reviewed and approved.
- The RMPL mortgage for the building at 2048 S. Pontiac Way and 7070 E. Asbury Avenue was the subject of a meeting with the mortgage holder. The differences in the balance were discussed and defined. We provided proof of questioned payments and are awaiting the mortgage holder's

setting the date of final payment.

Old Business:

- Website Update: Jim Kilbane reported that the new website was now up and running. The latest *Scribblings* should be on the site, as well as other updates.

New Business:

- The RMPL Finance Committee will consist of Tim Heins, Steve McGill, Steve Nadler, and David Weisberg. The committee will set up QuickBooks accounting for the library. Additional responsibilities and authority will be defined.
- The RMPL Bulk Lot Auction resulted in \$20,865 in income.
- World Stamp Show NY2016: The American Philatelic Society will be showing our RMPL video programs at the show theatre.
- The Volunteer Appreciation Dinner will be December 5. John Bloor has arranged for souvenir Philatelic Truck Visit sheets, with banquet details printed on the back.

New RMPL Members were approved.

The meeting adjourned at 7:45 p.m.



Most members of the Board of Directors attended the Volunteer Appreciation Dinner in December. **L. to R.:** Bob Blatherwick, treasurer; Howard Benson, operations manager; Jim Kilbane, vice president; Steve McGill, director; Dalene Thomas, director; John Bloor, director; John Sinski, president. Not shown: David Weisberg, director; Roe Emery, corresponding secretary; Brian Kramer, recording secretary.

It works! And, it is safe and easy...

How to Remove Adhesive from Self-Adhesive Stamps

by Dave Fullerton
West Side Stamp Club

For many self-adhesive stamps, soaking with water does not allow removal of the stamp from the envelopes, or other backing paper, without damaging the stamp. The prevailing approach is to closely clip and mount with the paper still attached.

Larry Hansen and I have been looking for a practical approach to remove the envelope paper, and allow easy mounting of the stamp to an album page.

A search of the internet and stamp chat groups indicates that others have been using various chemicals. This approach is apparently working, but does not address the issue of adhesive remaining on the stamp itself. In most cases, the approach has been to apply talcum powder to the back of the stamp, and sort of hide the remaining adhesive.

Other discussions involve scraping off the remaining adhesive from the stamp, again using chemicals.

A major distributor of foreign and U.S. stamps suggests "Pure Citrus" spray, without any discussion of the benefits or usage. I found that "Pure Citrus" comes in a spray bottle and is, in fact, a room air freshener, without the possible side effects of skin irritation or health problems. I could only find it at Home Depot.

Here is how it works:

Removal from envelope paper:

1. Place the stamp face down on paper
(I use newspaper)
2. Spray the backing paper, or daub using a brush
3. Wait approximately eight to ten seconds
4. Bend the corner of the backing paper down, and insert one point of tongs between the paper and the stamp. Slowly slide the tongs all the way under the stamp. The stamp is now separated. Place it on paper or poster

board, with the face of the stamp down. Allow it to dry. The spray evaporates very rapidly.

Removal of remaining adhesive from stamp:

1. Place the separated stamp face down on some paper
2. Again spray, or daub with a brush, the back of the stamp
3. Wait approximately eight to ten seconds
4. Place the stamp face down on some clean paper, on a desk or a table.
5. Using a scraper (like a metal ruler or putty knife), slowly slide it across the back of the stamp
6. Remove the adhesive from the scraper by daubing on scrap paper.
7. The stamp is ready to mount. If the back of the stamp is still sticky, repeat this procedure (this is rarely needed)



I have used these procedures on probably a hundred stamps, and am pleased with the result, but the scraping can damage the stamp, so care is advised.

Left: A container of Pure Citrus, Orange, found on the internet at Walmart.com for \$3.92. It is also available at Home Depot. This is the product mentioned in the article for use in taking self-adhesive gum off the back of used stamps. This has a pump spray and is not an aerosol container.

Ed. Note: This method to prepare used self-adhesive stamps for mounting in an album was demonstrated at a West Side Club meeting. It works like a charm, and appears to solve a thorny problem collectors have faced for several years. It seems unlikely something as simple as an air freshener would solve such a problem, but it does, and there you have it.

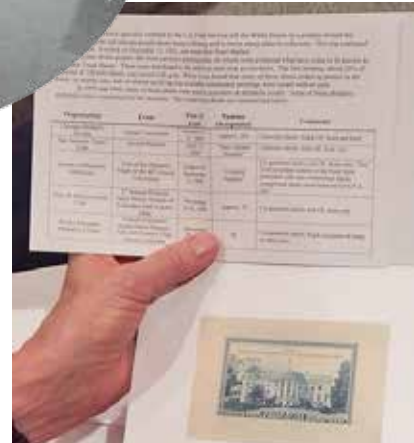
Ron Mitchell

2015 Library Volunteer Appreciation Party

Photography by Ron Mitchell



The Banquet Room at the Park Hill Golf Course in Denver.



John Bloor (on the **Left**, speaking at the podium) explained the significance of the 1939 Philatelic Truck Souvenir Sheet. He arranged for all the volunteers at the banquet to receive one with philatelic details (**right**). Our president, John Sinski, looks on (**far left**). As the emcee, he kept things moving right along during the presentations to volunteers.



Eight of our stamp sorters who put material in the "For Sale" books were present to be recognized.



Eleven of our front desk people stepped forward to be recognized.

(continued on page 7)



Joe Lanotte (**left**) and Paul Lee (**right**) were given the highest award the RMPL bestows on volunteers ... a book-clock suitable for display on a mantle. Joe created the video program, and has followed through with hard work and imagination. Paul spent several years writing Parks Postmarks & Postmasters, which has been very well received by critics and those who have purchased it.

A few of the many couples at the banquet:



Steve and Lois Nadler



Kathy and Bill Crabbs



Rose and Tom Suprenant



Helen and Joe Lanotte



John & Anita Bloor



Jack and Sandy Van Ens



Tommy and Geri Van Loij

2016 RMPL Country Lot Sale

by Bill Crabbs

Mark your calendars for February 20th, 2016, for the next Rocky Mountain Philatelic Library's 2016 Country Lot Sale! There will be 135 lots in this year's sale. The list is included with this issue of *Scribblings*.

Among those lots are a few standouts.

Bermuda is a wonderful mounted collection (in show guard mounts in page protectors), 300+ items with souvenir sheets included.

The country of **Gibraltar** ranks pretty well, with 150 stamps mounted in Showgard mounts in page protectors, plus additional stamps.

At the bottom of the list, take a look at **UN #2!** Here is a box filled with sheets, blocks, loose used, and mint with a count well over 2000+ stamps.

The lots will be ready for viewing on Thursday, February 18th, from 2 p.m. 'til 8 p.m., on Friday, February 19th, from 10 a.m. to 4 p.m.



135 envelopes stuffed with stamps have been prepared for this year's Country Lot Sale.

and on Saturday, February 20th, from 8 a.m. until 8:50 a.m.

Please read the Rules of the Auction, found along with the list of countries and the pricing.

You'll have to get up pretty early to beat others in order to be first in line for this sale!

RMPL Publications available ...



Danish Øre Bicolor Issues

by Peter Berg

\$40 postpaid in the U.S.

Mexico's Denver Printing

of 1914 by Ron Mitchell

\$50 postpaid in the U.S.

Parks Postmarks & Postmasters

by Paul Lee

Softbound - \$29.99

plus \$3.50 S & H

Hardbound - \$50.00

plus \$4.00 S & H

Prices are for shipping in the U.S.

To order, please send a check or money order made out to RMPL and mail to:

RMPL
2038 S. Pontiac Way
Denver, CO 80224-2412

RMPL Auction Updates

By Dave Weisberg

The Library had a very successful Large Lot Auction in October, raising \$20,865. This compares to about \$18,000 in 2014. When all was said and done, we only had 14 lots unsold, out of 275. The next sale is our annual Country Lot sale, put together by Bill Crabbs, which is described on the previous page.

The largest auction we have annually is the Silent Auction, held at the Rocky Mountain Stamp Show in May. The 2016 auction will have about 800 lots, and something for everyone's pocketbook. In particular, we will have a large number of United States stamps that will be available at starting bids as low as 10% of catalog; a great opportunity to fill in those gaps in your collection. This auction also has a large number of early



duck stamps: used, no gum, hinged and never hinged.

The next auction will also have a large selection of Canadian stamps, as well as Canadian Provincial issues.

If you are familiar with early Newfoundland material, you are aware that identifying these issues depends upon subtle color and paper differences.

When one of our members donated a Newfoundland collection, it contained what had been identified as an expensive Scott No. 9.

We submitted it to APEX for an evaluation, and it came back with a certificate stating that it was the even more valuable No. 15. See the adjacent expertization certificate (above) for this beautiful rare stamp.

We look forward to auctioning it off.

The Denver Postcard & Paper Show

January 15-16, 2016

Jefferson County Fairgrounds Exhibit Hall
15200 W. 6th Ave. (Exit Indiana St. from W. 6th Ave.)

Hours

Friday 11 a.m. - 7 p.m.
Saturday 9:30 a.m. - 5 p.m.

Admission

\$5.00, good for both days.
Mention this ad and get \$1 off!

- Plenty of free parking
- Friendly atmosphere
- Food available on site

For more information, including dealer space availability, contact Dede Horan at (303) 667-6212 or visit www.DenverPostcardShow.com



Now I'm ready to mosey on over to the
Denver Postcard & Paper Show ...



Consider and COMMIT to a Local Level Exhibit!

by Jeff Modesitt

I have met with a number of philatelic organizations over the past few months in an effort to stimulate interest in "Local" level exhibiting. The pitch is simple. Exhibiting makes our hobby stronger, makes the exhibitor more knowledgeable, and helps pass on what each of us has learned about our areas of interest. The goal is to have 20-25 participants.

The local level exhibits will once again be critiqued by request and will not be competitive.

Each exhibit is limited to one frame and will be acknowledged in the show program. The frame fee is \$5.00.

There is an entry form on the RMSS website (rockymountainstampshow.com).

Please give your commitment! If you have any questions, contact Jeff at 720-624-9024 (by email at jeffmcolorado@gmail.com) or Jerry Eggleston, Exhibits Chairman, at exhibits@rockymountainstampshow.com.

Take your pick, but please pick one...

THE SOFT SELL

In May, we shall have the Rocky Mountain Stamp Show. We need volunteers for setup, break down, and each day for front desk service. Work and get in free. Call VeraLouise @ (303) 949-2627 to reserve your times.

THE HARD SELL

Get involved!
 Many hands make light work!
 We're searching for volunteers!
 We need your help!
 You can help!
 Can we count you in?
 Become a volunteer today!
 Your local stampshow needs you!
 Call VeraLouise right this minute!
 (303) 949-2627!

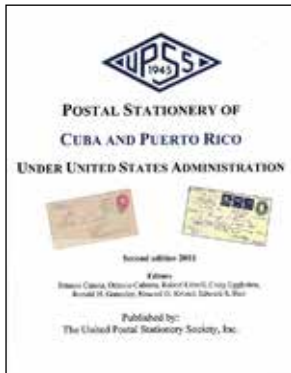


WHAT'S NEW ON THE SHELVES

UNITED STATES

Annual Report of the Postmaster General, Fiscal Year Ended June 30 1932 [The RMPL also has copies of this report for the years 1933-1970]

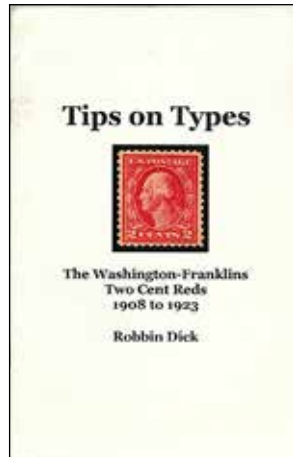
Postal Laws and Regulations of the United States of America, Edition of 1924, published by the United States Post Office



Postal Stationery of Cuba and Puerto Rico under United States Administration: Second Edition, 2015, published by the United Postal Stationery Society

Stamping Our History: The Story of the United States Portrayed on its Postage Stamps, by Charles Davidson & Lincoln Diamant

Tips on Types: The Washington-Franklins Two Cent Reds 1908-1923, by Robbin Dick

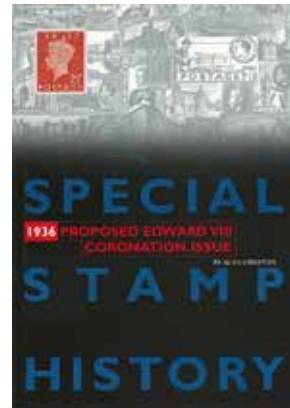


AUSTRALIA and OCEANIA



Pacific Islands Stamp Catalogue (1983), published by Seven Seas Stamps

EUROPE

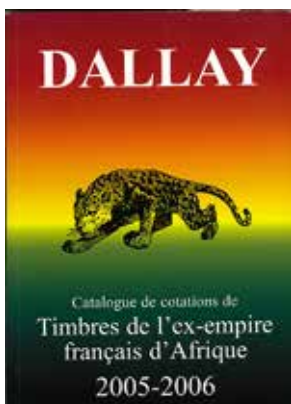


1936 Proposed Edward VIII Coronation Issue, by Alan Griffiths



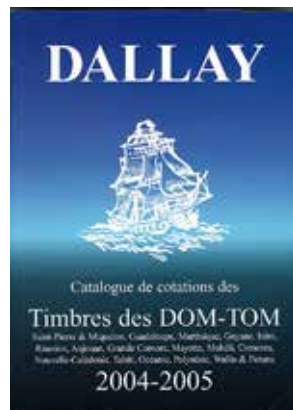
Bolaffi 73: Catalogo Nazionale de Francobolli Italiani

AFRICA



Catalogue de Cotations de Timbres de l'Ex-empire français d'Afrique, 2005-2006, published by Dallay

Dallay: Timbres des DOM-TOM [stamps of French territories] 2004-2005, published by Dallay



Catalogue des Timbres Fiscaux et Socio-Postaux de France 1990, published by Yvert et Tellier

Catalogue de Timbres-Poste: Tome II: Europe (1980), published by Yvert & Tellier

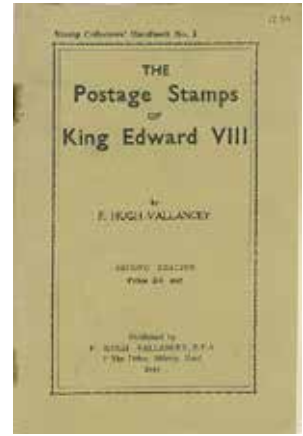
What's New on the Shelves: Europe, continued.



DNK Deutschland Briefmarken-Katalog 2001, published by Leuchtturm
Handbuch der Kriegsgefangenenpost Tsingtau [Handbook of Prisoner of War posts Tsingtau], by Helmut Rufer and Wolf Rungas
Illustriertes über die Deutschen Hufeisen Stempel [Illustrated Handbook of German Horseshoe Cancels], by Friedrich Spalink



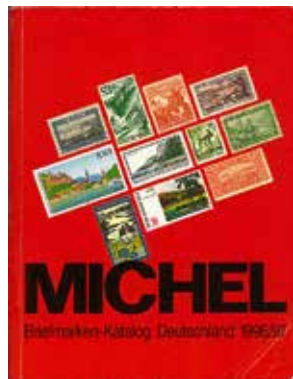
Polish Olympic Chronicle in Philately, by Fabian Bura



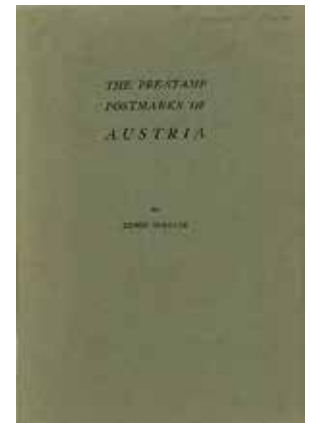
The Postage Stamps of King Edward VIII, by F. Hugh Vallancey



King Edward VIII: Study of the Stamps of the Reign of King Edward VIII, by A.J. Kirk
Michel Briefmarken-Katalog Deutschland 1996/1997
Philex Deutschland Briefmarken Katalog 1975/76



Postkrieg 1948-1972 [Specialized Catalog of the "Post War-Evidence 1948-1972"] by Dedo Burhop
The Pre-Stamp Postmarks of Austria, by Edwin Mueller



The RMPL is open six hours a day, six days a week.



Repubblica di San Marino: Museo Postale e Filatelico di Borgomaggiore
The Royal Philatelic Collection



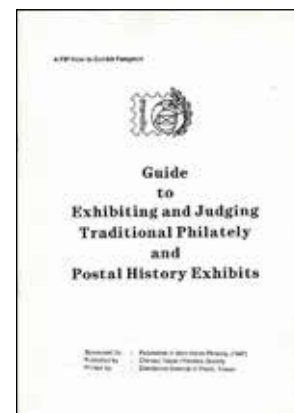


Zensurpost aus dem III. Reich: Die Überwachung des Auslandsbriefverkehrs während des II. Weltkrieges durch deutsche Dienststellen, by Karl Heinz Riemer

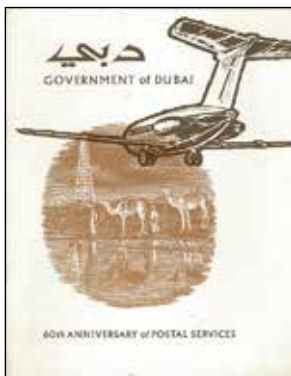
MISCELLANEOUS



ARA fiscal philatelic literature handbook, 1997-2001 update, published by the American Revenues Guide to Exhibiting and Judging Traditional Philately and Postal History Exhibits, by Robert P. Odenweller and Paul H. Jensen



MIDDLE EAST



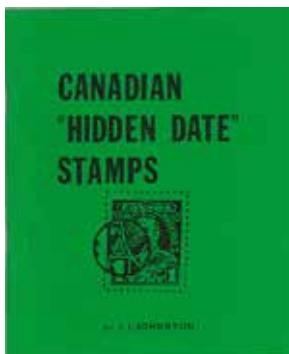
Government of Dubai: 60th Anniversary of Postal Services



international federation of stamp dealers' associations [ifsd] Handbook 2010
Ocean Mails, by Philip Cockrill



NORTH AMERICA



Canadian "Hidden Date" Stamps, 1935-1987, by J.J. Johnston

AUCTION CATALOGS

- The 'Bill Hart' Natal & Boer War Collections*, catalog for a Cavendish auction June 1993
- Brasil "Don Pedro"*, auction catalog for a Soler y Llach auction May 2004
- Corinphila Briefmarken-Auktion: Schweiz, Inklusiv Sammlung "Seebub" & B Fürstentum Liechtenstein*, catalog for a Corinphila auction May 2015
- Hawaii, Featuring the Original Frank C. Atherton Collection*, catalog for a Robert A. Siegel auction October 2015
- The "Majestic" Collection of Prince Edward Island & Canada*, catalog for a Daniel F. Kelleher auction May 2015

CINDERELLAS

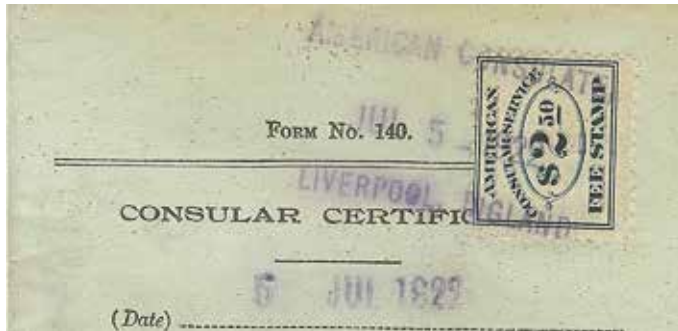
The Art of the Poster Stamp: Germany, by Nicholas Follansbee

SECOND SATURDAY PROGRAMS AT THE LIBRARY

Second Saturday programs are sponsored by the RMPL and attract a friendly group of folks who are interested in a specific subject, or who are interested in learning more about an area of philately that may be new to them.

Contact Jim Kilbane if you would like to present a program. His email is aurora_80017@yahoo.com.

The programs begin at 9 a.m. and are over by 10 a.m.
Doughnuts and coffee are complimentary, and all are welcome.



January 9, 9 a.m.

U.S. Consular Fee Stamp Usages
by Ravi Vora

Proofs, essays, bisects, multiples and rare usages will be shown.

February 13, 9 a.m.

*Mail from the Rim of a Volcano...
Before and after the Big Bang*

by Marc Silberman

Tin Can Mail from the 1930s 'til the 50th anniversary of the evacuation of Niufo'ou Island.



RMPL Videos on Line and on DVD

The RMPL now has ten video titles on the Internet:

- United States National Parks
By Paul Lee
- The Lore and Legend of Dragons
As Told by Postage Stamps, by Lynne Toews
(You'll love the ending of this!)
- A History of Scouting, by Frank Leitz
- Scouting Activities, by Frank Leitz
- The Security Elements of Postage Stamps,
Part 1, By Steve Dixon
- Jewish National Fund: Labels with a Purpose
By Dasa Metzler
- Tasmania, Part 1: Pictorial Stamps 1899-1900
By Ron Hill
- Tasmania, Part 2: Pictorial Stamps 1901-1913
By Ron Hill
- RMPL Youth Stamp Club
By Don Dhonau
- U.S./German Seapost
By Sergio Lugo

Nine of the presentations are available on one DVD. The video on national parks is not included. DVDs are available at the library for \$5.00, or by mail for an additional \$2.00 for shipping and handling.



To order, send a check or money order to:
RMPL
Videos
2038 S Pontiac Way
Denver, CO 80224-2412

NEW MEMBERS

The RMPL is pleased to welcome the following new members who have joined the library in the past two months.

Charles Buhring, Aurora CO - Collects U.S
David Goodman, Lyons CO
Rob Schwartz, Greenwood Village, CO
 Collects Israel, Palestine, birds on stamps

BOARD OF DIRECTORS MEETING

January 21, 2016
 7 p.m.

All members are welcome!



Return books on time...

- Books are on loan for two weeks.
- If you call before the due date, you may renew for two more weeks
- Please print your name and telephone number legibly on the check-out card.

DONATIONS

The library thrives on the enthusiasm and generosity of its members. The following members made donations to the library in October and November. We thank each and every one who has contributed.

- | | |
|--------------------|-------------------|
| Paul Albright | Glenn F. Mallory |
| Fred C. Bauer | Matt McColm |
| Richard Beaver | Dasa Metzler |
| John Bloor | Mike Milam |
| Ralph Buckwalter | Amy Norton |
| Stephen Church | Roberta Palen |
| Richard Clarke | Alex Parker |
| Catherine Compton | Eckhard Pobuda |
| Thomas Cook | Karol Raymer |
| Jerry Eggleston | David Reitsema |
| Erling Fossum | Ann Richardson |
| Ed Glassman | and Bill Stolfus |
| Annette Hala | Brian Roach |
| Ned Husman | Clarence Rybowski |
| Charles Jones | Travis Searls |
| Nancy Raymer Keyes | Walter Straight |
| George Killian | George Volz |
| Stan Kliebenstein | Andrew Wacinski |
| Cynthia Lande | Robert A. Walleen |
| Deborah Lindgren | Doug Ward |
| Carla Littlefield | Dave Weisberg |
| Stanley J. Luft | Shirley Whiteley |
| Clark Lyda | Al Wonstolen |
| William Mahoney | |

Note: Due to the Thanksgiving holiday, some donations received in late November were not recorded until December. They will be acknowledged in the next *Scribblings*.

Fresh Snow on the Ground?

Call the library to make sure it's open before you venture out. 3" or more on the ground and we're almost certainly closed for the safety of volunteers and patrons. (303) 759-9921.



What's Happening at the RMPL...

Hours: Monday, Tuesday, Wednesday, Friday, Saturday 10 a.m. - 4 p.m.
Thursday 2 - 8 p.m. Closed Sundays and Holidays. Phone: (303) 759-9921

Meeting times and places sometimes change. It is best to call the library or the club to confirm the place and time. A calendar of reserved club times is kept at the library by the Operations Manager, Howard Benson. Clubs should check the calendar regularly and notify Howard at (303) 521-6216 of any changes or updates. All requests to reserve meeting time and space for philately related meetings other than those listed here must be approved and scheduled by Howard well in advance.

JANUARY 2016

Jan 2 Sat - Library Closed for New Years weekend except for this meeting:

10 a.m. Scandinavian Collector's Club

Jan 6 Wed - Meeting - Aurora Stamp Club
6:30 p.m. trading, 7 p.m. meeting

Jan 8 Fri - Meeting - 7 p.m.
Austria-Hungary Club

Second Saturday at the RMPL

Jan 9 - 9 a.m.

Program by Ravi Vora

U.S. Consular Fee Stamp Usages

Jan 9 Sat - Meeting - 10 a.m.

Mexico/Latin America Study Group

Jan 13 Wed - Meeting - 7 p.m.

Denver Germany Stamp Club

Jan 14 Thurs - Meeting - 2 p.m.
Cherrellyn Stamp Club

Jan 14 Thurs - Meeting - 6:30 p.m.
Denver Postcard Club

Jan 16 Sat - Meeting - 9:30 a.m.

RMPL Young Stamp Collector's Club

Jan 17 Sun - Meeting - 2 p.m.

Great Britain & Commonwealth
Collector's Club

Jan 18 Mon - Library Closed
Martin Luther King Day

Jan 21 Thurs - RMPL Board of Directors meet at 7 p.m. in the Library Annex
All members are welcome!

Jan 26 Tue - Meeting - 7:30 p.m.

Rocky Mountain Stamp Show Committee

Jan 27 Wed - Meeting - Noon
Denver Stamp Club

FEBRUARY 2016

Feb 3 Wed - Meeting - Aurora Stamp club
6:30 p.m. trading, 7 p.m. meeting

Feb 6 Sat - Meeting - 10 a.m.
Scandinavian Collector's Club

Feb 6 Sat - Meeting - 1 p.m.
Topical Collectors of Colorado

Feb 10 Wed - Meeting - 7 p.m.
Denver Germany Stamp Club

Feb 11 Thurs - Meeting - 2 p.m.
Cherrellyn Stamp Club

Feb 11 Thurs - Meeting - 6:30 p.m.
Denver Postcard Club

Feb 12 Fri - Meeting - 7 p.m.
Austria-Hungary Club

Second Saturday at the RMPL

Feb 13 - Meeting - 9 a.m.

Program by Marc Silberman
Mail from the Rim of a Volcano

Feb 13 Sat - Meeting - 10 a.m.

Mexico/Latin America Study Group

Feb 13 Sat - Meeting - 11:30 a.m.

Rocky Mountain Aerophilatelic Club

Feb 15 Mon - Library Closed
Presidents' Day

Feb 20 Sat - 9 a.m.

Country Lots Sale

Feb 20 Sat - Meeting - 9:30 a.m.

RMPL Young Stamp Collectors Club

Feb 20 Sat - Meeting 1 p.m.

Colorado Postal History Society

Feb 21 Sun - Meeting - 2 p.m.

Great Britain & Commonwealth
Collectors Club

Feb 23 Tue - Meeting - 7:30 p.m.

Rocky Mountain Stamp Show Committee

Feb 24 Wed - Meeting - Noon

Denver Stamp Club