



# Scribblings

Newsletter of the  
**Rocky Mountain Philatelic Library**

2038 So. Pontiac Way  
Denver, CO 80224  
Phone: (303) 759-9921  
email: [rmpl@qwestoffice.net](mailto:rmpl@qwestoffice.net)  
Hours: 10 a.m. to 4 p.m. daily,  
Thursday, 2 p.m. to 8 p.m.  
Closed Sundays & Holidays

## Editor

Jeff Modesitt ([jeffmcolorado@gmail.com](mailto:jeffmcolorado@gmail.com))

## Copy Editors / Proofreaders

Don Beuthel  
Ellengail Beuthel  
VeraLouise Kleinfeld-Pfeiffer  
Steve Schweighofer

## Librarian

Ellengail Beuthel

*Scribblings* is published bimonthly by the Rocky Mountain Philatelic Library. The RMPL is a chartered Colorado nonprofit corporation and is an IRS-designated 501(c)(3) charitable organization. Membership subscriptions over that for the regular membership, and donations of appropriate philatelic materials, are deductible for US income tax purposes. The Library is a volunteer organization. Financial donations, philatelic books, stamps, supplies, and donations of your time, are welcome.

A basic membership with the RMPL is \$25 per year, and includes checkout privileges and *Scribblings*. Call for more information.

Knowledge is better when shared. Consider writing an article for *Scribblings* about your favorite philatelic topic.

President..... John Sinski  
Operations Manager..... Howard Benson  
Vice President ..... Jim Kilbane  
Corresponding Secretary..... Bill Plachte  
Recording Secretary ..... Brian Kramer  
Treasurer ..... Tim Heins, CPA

Directors: John Bloor, Steve McGill,  
Dalene Thomas, David Weisberg.  
Director Emeritus: Don Dhonau.  
Ex-officio member, Ellengail Beuthel

Officers and Directors may be contacted  
through the RMPL.

Web page — [www.rmpldenver.org](http://www.rmpldenver.org)

## The President's Message

The last few months have been challenging as we mourned the loss of Ron Mitchell and other valued RMPL members. We scrambled to complete Ron's preparations for the World Stamp Show NY2016.



Trying to fill such capable shoes is a daunting task, but John Bloor stepped up, shouldered the load, and capably represented us in New York. Our thanks go out to John and his wife, Anita, and those who helped him man the table over the eight-day mega-show. Through their efforts, we gained some new members from the NY2016 World Stamp Show and became known to many who didn't know we existed.

John Sinski  
RMPL President

## Contents

<i>The President's Message</i> .....	2
<i>Milestones</i> .....	3
<i>RMPL at the World Stamp Show</i> by John Bloor .....	3
<i>Past, Present, and Future</i> .....	5
<i>Our History</i> by Ellengail Beuthel.....	6
<i>Our Card Catalog</i> .....	7
<i>RMPL Holdings</i> .....	8
<i>Scandinavian Collectors Club Library</i> .....	9
<i>Western History/Railroad Book Collections</i> .....	10
<i>Czechoslovak &amp; Lighthouse Libraries</i> .....	10
<i>Society Journal Printing</i> .....	10
<i>Volunteers</i> .....	11
<i>RMPL Financial Strength</i> .....	11
<i>Our Videos</i> .....	12
<i>Borrowing By Mail</i> by John Bloor .....	12
<i>The Map Room</i> by Steve Schweighofer .....	13
<i>RMPL Publication Program</i> by Sergio Lugo.....	14
<i>Educational Activities</i> .....	15
<i>Stamps for Sale</i> .....	16
<i>The Garden at RMPL</i> by Tonny Van Loij .....	17
<i>What's New on the Shelves</i> .....	18
<i>Our Vision for the Future</i> .....	21
<i>Second Saturday Programs</i> .....	22
<i>New Members</i> .....	23
<i>Donations</i> .....	23
<i>Board Minutes</i> .....	23
<i>July/August RMPL Event Calendar</i> .....	24



# Milestones

This edition of *Scribblings* is a little different. It is essentially the copy created to be handed out at World Stamp Show New York 2016. The intent of that publication was to produce an edition that told our story, explained the breadth and depth of our operations, and highlighted some of the many people who make the library one of the great philatelic organizational successes of the last 25 years!

It is also the 25th anniversary from our original date of incorporation! What better time to take a look at what has flowered from 10 or so founders contemplating and conceptualizing a philatelic library for the Denver area—at burrito lunches no less.

Even for those of you who are frequent visitors to the RMPL, there may be a few surprises contained in these pages. Perhaps a picture of a person with whom you have had a conversation, but never seen face to face; perhaps the availability of a special collection housed at the library; or simply the magnitude of

activities centered at RMPL. The library is truly a center of philatelic activity and one of which all of us can be proud.

This is my third edition as the *Scribblings* editor, so I am a newbie. While I know many of our membership, the fact is that most of you do not know me and, more importantly, do not know how to get in touch with me. I bring this up because *Scribblings* is a membership-driven journal and relies on its members for scintillating, informative articles. Should you choose to rely on me to generate articles from my current friends and acquaintances, be prepared for a flood of material on British and Scandinavian philately.

To avoid this, please note my email below. I would love to hear from anyone who wants to write an article or, better yet, has one that needs publishing!

All of us who worked on this Special Edition hope you enjoy it! Have a wonderful summer and successful “stamping.”

Jeff Modesitt, Editor  
jeffmcolorado@gmail.com

## The RMPL at the World Stamp Show

By John Bloor

About two years ago, the RMPL received an invitation to attend the World Stamp Show-New York 2016 (aka NY2016) as a society booth holder. The library board discussed it and wasn't convinced that it would be beneficial. Ron Mitchell felt differently. He convinced the board of the value to the library of our presence at the show. We would be one of five libraries represented, including the American Philatelic Research Library and the library of the Royal Philatelic Society (London). We would be in the company of two of the premier philatelic libraries in the world. We would be playing with the big boys! A budget was approved, we reserved a table at the show, and we were off and running.

Over the next year and a half, Ron developed plans for what he wanted to do at the show and how the RMPL would benefit from attending. He gave several updates to the library board. Things seemed to be moving right along until March 23<sup>rd</sup>.

After Ron's death, work began reconstructing his plans for the booth. Steve Nadler took charge and organized meetings of those who were working on show preparations, providing guidance and organization for all of us. I agreed to take over for Ron and run the booth at the show. The five big jobs were preparing a Special Edition of *Scribblings* for the show, developing a one-frame exhibit about the RMPL, planning for the book giveaway at the show, producing handouts for young collectors, and designing and printing the RMPL souvenir sheet for NY2016.



Jack VanEns, Walt Figel, and John Bloor at the RMPL booth



Jeff Modesitt edited and printed the *Scribblings* special edition. I did the frame and the book giveaway. Marc Silberman created the souvenir sheet. Don Dhonau and Roger Rydberg designed and assembled a stamp activity booklet and packets of stamps to be given to kids at the show. Others, including John Sinski, Bill Crabbs, Ellengail Beuthel and probably several more that I've omitted, all helped in various ways.

Several boxes of books and other stuff were shipped to the Javits Convention Center, the show venue in New York. Sergio and Pam Lugo drove to New York and carried two banners, a table lamp, and several boxes of booth material. I had two suitcases, one with all the remaining material for the show. On May 26<sup>th</sup> I flew to New York, set up the booth on Friday, and opened for business on Saturday for an eight-day run. The efforts of all these people were what made the RMPL table at NY2016 a success.

The RMPL booth had visitors most of the day for the entire show. I was able to get away to view exhibits and visit the USPS, several dealers, and other societies only because of the invaluable help of several RMPL members who were at the show. The people who helped with the booth were Sherri and Van Jennings, Pat Walters, Mike Milam, Ed Zamejc, Jack and Sharon VanEns, Walt Figel, Eric Carlson, and Sergio Lugo. My thanks to all of them.

As visitors came by the table the first and most important thing that we did was talk to them. We also gave out 190 copies of Jeff's NY2106 special edition and 85 copies of other issues of *Scribblings*, 160 of Marc's souvenir sheets and folders, and about 90 of Don's and Roger's youth booklets. The majority (126) of the people signed the guest book, providing us with a valuable database for future contacts.

The show was huge. There were about 4500 frames of exhibits, 80 postal administrations, over 160 dealers, 100 societies with 89 of them having or sharing booths, and 5 major auctions. The show was officially open for 61 hours.

The show seemed busy. Before the show, attendance was predicted to be 200,000 to 250,000 but the actual attendance is still not available. Most of the dealer's tables had full chairs much of the time. The dealers I talked with all seemed pleased with the business that they were doing. The US post office

megabooth had long, slow lines every day. The many talks were reported to be well-attended.

Not surprisingly, with 4500 frames of exhibits, there were many awards. The palmares are 16 pages long. They can be viewed in their entirety at: <http://www.ny2016.org/images/palmares.pdf>

The top three awards, equivalent to the Grand and Reserve Grand awards in a World Series of Philately show in the US were:

**Grand Prix d'Honneur:** Alvar Castro-Harrigan (Costa Rica)—*Panama: First Issues as a State of Colombia and their forerunners*

**Grand Prix National:** Gordon Eubanks (U.S.A.)—*The U.S. Imperforate Issues of 1851-1856 and Their Importance in an Expanding Postal System*

**Grand Prix International:** Wei Gang (China)—*China: The Postal History of Mongolia 1841-1921*

Colorado was not left out of the awards. Winners with ties to the state included Pat Walters (Large Gold), Marc Gonzalez (Gold), Steve McGill (Gold), Rick Mingee (Gold), and Lewis Bussey (Large Vermeil). There were also at least two RMPL members from other states who received awards. They were Lester Lanphear III from San Diego, CA (Gold) and Ernesto Questa living in Bethesda, MD (Vermeil). There may be others with Colorado ties who received awards, but these are the ones I could identify.

The big question for the RMPL is whether our presence at the show was worthwhile. Although it is difficult to quantitate, I believe that it was. The biggest benefit was the international visibility that we gained. Many people had never imagined that Denver had a major philatelic library. A second benefit was the contact information collected in the guest book. I will be contacting these people and asking whether they would like to join, contribute an article to *Scribblings*, or visit us. At least half a dozen people had friends or relatives in the Denver area and they said that they would come to the library when they visited Denver. I expect that we will gain some new members this way. We were given books by several societies which will increase our holdings. Although we received no monetary donations, perhaps we planted some seeds for the future. Should we do it again in 2026 in Boston? It's too early to tell.

## Accomplishments of the Past

- ◆ RMPL Created— Growth to 500 Members
- ◆ Judaica & Topical Centers Created
- ◆ 12—15 Local Area Stamp Clubs Hold Regular Meetings at the RMPL
- ◆ 9 National Publications Printed From Our Facility
- ◆ Webpage Created
- ◆ Publication Program Created - First 4 Books Published
- ◆ Parking Lot Repaved and Roofing Redone
- ◆ Video Education Program Produces 11 Videos
- ◆ Building Annex & Additional Lot (Garden) Acquired
- ◆ \$105,000 Raised through Member Pledge Program
- ◆ Mortgage Repaid on Original Building
- ◆ Regular OLLI Participation (*History through Stamps*)
- ◆ Bi-Monthly Newsletter Program Begun (*Scribblings*)
- ◆ Participation in APS Stamp Shows Since 2000
- ◆ Auction and Sales Program Begun
- ◆ Donations Program Begun
- ◆ Youth Program Created

## Recent Accomplishments

- ◆ Mortgage Paid Off in 6 Years on our Annex Building!
- ◆ New Financial Management System Introduced
- ◆ New RMPL Webpage Created
- ◆ Video Education Program Produces Two More Videos
- ◆ Recent Auctions Raise Record Funds
- ◆ Increased Donations Program
- ◆ Advisory Group for Families who Have Inherited Collections
- ◆ NY 2016 Show Participation

## Vision for The Future

- ◆ Unite Buildings with New Entrance & Offices
- ◆ Introduce New Shelving Arrangements
- ◆ Expand Video Education Presence
- ◆ Expand Adult Education Program with University of Denver
- ◆ Establish Printing Publications Trust
- ◆ Upgrade Printing Equipment
- ◆ Expand Society Printing Program
- ◆ Upgrade Computer Equipment
- ◆ Secure IT Professional Staff
- ◆ Youth Program Expansion

**The next 16 pages of this Special *Scribblings* Edition are dedicated to those who made it happen, those who currently contribute their time and efforts, and those who will carry the torch in the future. In these pages, you will find what we have done, what we are doing, and what we hope to accomplish in the future!**



# OUR HISTORY

BY ELLENGAIL BEUTHEL

The idea of a philatelic library in the Denver area was discussed many times by a small group of collectors who met almost every Saturday for a "burrito lunch" at a local restaurant. It was decided that the idea had been talked about long enough so a meeting was held in our basement to determine the possibility of starting one. They incorporated in 1991. The big problem was - where could we locate and how would we pay for it? Thanks to the generosity of a member who offered one of his storefronts in a strip mall at no charge, that problem was temporarily solved. The 10+ collectors at the meeting could now move forward to establish the library.

Several members dug into their billfolds and came up with enough money to buy a few heavy-duty shelves, a desk, and some file cabinets. We started asking for donations of philatelic material and the donors were most generous. The Rocky Mountain Philatelic Library opened for business as an all-volunteer staffed library on August 1, 1993 at 3050 So. Peoria. The RMPL Board was established at the outset. It governs the library, setting policies and rules and is administratively managed through the president. The librarian manages all aspects of the library associated with its holdings.

After a year or so we had to move next door and about 6 months later we had to move again because



"free" space was no longer available. Several of the group started looking for a location and trying to find ways to purchase a building. We located the building at 2038 So. Pontiac Way and, after considerable negotiation, two of our group put up the down-payment to buy the building. The building was in terrible shape. The previous occupants had sold used and abused furniture (we thought that it was mostly abused). Volunteers started painting and cleaning. A member let us have the paint at cost. We knew that we would have to buy carpeting, so I went to ROMPEX to ask for donations (a square yard of carpeting for a \$25 donation). The realtor got us a good deal on carpeting and we managed to carpet the floor of the building. We also had to pay for a new roof. A member from Oklahoma let us have very nice shelves

and desks. We had to only pay the freight, which another member offered to do.

We realized immediately that the library needed a (501)(c)(3) IRS designation to enable people making donations to the library to deduct the value of the donation from their income tax. That process was made much easier when it was discovered that a woman from the IRS was a philatelist and understood what we were doing.



*Ellengail Beuthel, RMPL Librarian, receiving the APS award from past RMPL President Sergio Lugo.*

## Establishing the Library Collections

One member had a fine collection of Western History and Railroad books and a room was set aside for them. Another had access to a large number of maps and another room became our map room.

I am a retired librarian and agreed to catalog the material that had been donated. After about 22 years and approximately 25,000 volunteer hours, I am still volunteering. I have cataloged approximately 14,000 books and 700 different periodicals. From the beginning, I realized that the cataloging should be done according to the established rules and decided that the books, CDs, DVDs, Videos, etc. would be classified according to the Dewey Decimal System. I had access to a copy and felt that it would be easiest for the patrons to use and that it could be expanded to fit our needs. I purchased a copy of the *Anglo American Cataloging Rules* which is the standard for the English-speaking world for our descriptive cataloging. We needed a subject authority file and I formed one using Sutton's *The Stamp Collecting Encyclopedia* and the index to the *American Philatelist*. Later we learned of the APRL's *Manual of Philatelic Headings* which we purchased and integrated into the subject authority file that I had already started.

The library started out with the old-style card catalog. In 1999, we learned of the computer program, In-Magic, which was being used by APRL. It is not a library program, but it can be easily adapted for use in a library.

With the help of Travis Searles, a programmer, our library catalog went on line.

As the library grew, we realized that we needed more shelving and purchased movable shelving. In 2003, a mortgage burning ceremony was held. We had paid it off seven years ahead of time!!!

In August of 2009, the building next door and the adjacent lot became available. We were able to buy them. We managed to pay off those mortgages in 2016! As before, with volunteer labor and donated materials, the building was transformed. The front part became a meeting room with a built-in digital overhead projector and space for about 60 guests. Currently, 12-15 local

stamp societies meet there. We also hold our bulk lot auction there. The back part is used as office and storage space. Our printing facility is located there as well. Several national philatelic groups house their libraries there. The extra lot has been transformed into a beautiful decorative garden and a highly productive vegetable garden.

This is where we stand today. Read more of this issue of *Scribblings* and you will find out what's inside the library, what we do and what our plans are for the future. We are very proud of what we have accomplished. If you are visiting the Denver area, please come and visit us. If you live here, what are you waiting for?

## OUR CARD (DIGITAL) CATALOG

### The Brain of the Library

So now we had some books and periodicals. These are much more useful if you can find things in them. We needed a card catalog. Fortunately we had Ellengail Beuthel who knew how to get that done.

The catalog was based on the Dewey Decimal System (DDS). Because the DDS classifies all books on stamps under stamp collecting (769.56) a modified DDS was needed.



Starting with the subject authority file published by the American Philatelic Research Library, Ellengail expanded the categories, creating more

numbers. This allowed her to give unique numbers to a greater variety of subjects within stamp collecting.

Books, periodicals, CDs, DVDs, and videos among our holdings are all classified by subject.

The library originally began with a true card catalog but has now changed entirely to a searchable digital catalog.

Several years ago, with the help of Travis Searles, a programmer who also collects stamps, our catalog went online, making the library holdings accessible to the world.

The RMPL catalog, together with the catalogs of 12

other philatelic libraries, is part of the Philatelic Union Catalog hosted by the APRL.

The most recent change is the creation of the Global Philatelic Library, hosted by the Royal Philatelic Society (London). It includes the libraries in the Union Catalog plus libraries in Norway, Germany, UK, Belgium, Finland, Netherlands, and Australia. It is expected that more libraries will gradually be added.

[APRL](#) = American Philatelic Research Library

[CCNY](#) = Collectors Club (NY)

[CCC](#) = Collectors Club of Chicago

[Greene](#) = Greene Foundation

[NWPL](#) = Northwest Philatelic Library

[PHF](#) = Postal History Foundation

[RMPL](#) = Rocky Mountain Philatelic Library

[RPSL](#) = Royal Philatelic Society London

[SCC](#) = Scandinavian Collectors Club

[Spellman](#) = Spellman Museum of Stamps & Postal History

[SIL-NPM](#) = The Smithsonian Libraries - National Postal Museum

[WPL](#) = Western Philatelic Library

[WPRL](#) = Wineburgh Philatelic Research Library

**Being part of the Global Philatelic Catalogue, brings our library into the international philatelic community.**

The David Straight Memorial  
Philatelic Union Catalog

philatelic library holdings and article index

hosted by the American Philatelic Research Library



## RMPL HOLDINGS

# Books, Periodicals, Videos, CDs, DVDs, Special Collections & National Society Libraries

As our name states, we are first and foremost a library. The RMPL contains approximately 14,000+ volumes, including compact discs and digital video discs (but not including our housed society libraries). We have approximately 1,250 periodical titles with over 120,000 individual issues. Our collection of approximately 3,500 auction catalogs covers 88 U.S. and international auction houses. Priority is given to "named" auctions of noteworthy collections. Our collection of sixty-eight 35mm slide presentations is being converted to digital format. These are photos of award winning exhibits and philatelic presentations. We also have specialty collections of Western History, Railroads (including timetables from 1929 to 1979) and 2,100 United States and international maps.

### Some of Our Special Collections:

- ◆ The Boy Scouts (Stamps, ephemera, and books)
- ◆ Judaic Collections / Exhibits
- ◆ Colorado Postcards (about 3,000 of them)
- ◆ Cuban Stamps
- ◆ Western History and Railroads
- ◆ Colorado Postal History
- ◆ Locked Case Books (rare or fragile)
- ◆ Topical Philately
- ◆ Lighthouse Covers (perhaps the largest collection in the world)
- ◆ The Gene McGruer Germany Inflation Stamp collection
- ◆ Castro Era Cuba collection
- ◆ Japanese Occupation of the Dutch Indies
- ◆ Machine Cancel Types
- ◆ RMPL Fakes and Forgeries Collection
- ◆ Telegraph Covers
- ◆ California & Nevada Railway Post Offices
- ◆ Colorado Centenarian 1976 covers from Colorado's Centennial year
- ◆ Mobile (Highway) Post Offices (10 volumes)
- ◆ Watercraft Philately
- ◆ The Map Collection

*Access to all  
Special Collections  
and Society  
Libraries is by  
appointment only.*

### Major Society Libraries Include:

- ◆ The Scandinavian Collectors Club Library
- ◆ Czechoslovak Philately Library
- ◆ The Lighthouse Stamp Society Library
- ◆ Colorado Postal History Research Files
- ◆ US Postal Stationery Society

*Patrons may use these society library materials in the RMPL, but may not check them out. Any member may order a book by mail, so it is not necessary to physically access the Library to benefit from its catalog of philatelic materials.*

More than forty volunteers perform the duties required to maintain the collections listed above. In addition, these same volunteers open and close the Library (lights, alarms, coffee pot, etc.), monitor front door traffic, supervising the copy machines and computers, supervising the stamp sales area, make coffee, restock cold drinks, answer the telephone, receive mail and deliveries, and help walk-in visitors. They also receive money for dues, stamp sales, book sales, copies, receive and process donations, instruct patrons in the use of the card catalog, handle mail borrowing, and check books in and out. Whew!!!



# Scandinavian Collectors Club Library

Some 17 years ago, the Scandinavian Collectors Club (SCC) became the first of several philatelic societies to locate their specialized libraries at RMPL. The SCC Library has grown to comprise several thousand books, catalogs, exhibits, periodicals, monographs, audio-visual materials, and ephemera that are housed in two adjacent rooms in RMPL's main building.

The library's focus is on philatelic material that relates to the Nordic region and on Scandinavian countries and their former and present dependencies: Denmark, Iceland, Finland, Sweden, Norway, Danish West Indies, Faroe Islands, Greenland, Slesvig, and Åland.

This very active library strives to carry out SCC's mission of promoting communication among collectors of Scandinavian philatelic



material and encouraging research and dissemination of information about Scandinavian philately. This includes acquiring philatelic material for the library, making this material available to SCC's international membership,

conducting limited research in response to requests, and disseminating surplus material to SCC members through auctions that support library operations and bolster SCC's general treasury. SCC was one of the first specialty societies to have its online catalog of holdings linked with both the Philatelic Union Catalog and the Global Philatelic Library. The SCC Library is guided by a five-member committee, four of whom are either current or former officers or directors at RMPL. To learn more about SCC and to access the library's online catalog, link to <http://www.scc-online.org/> on the Internet.

*The Scandinavian Collectors Club Library is housed at Rocky Mountain Philatelic Library. SCC is pleased with the facility and support provided. In 2012 Paul Albright, Roger Cichorz, Jim Kilbane, Jeff Modesitt, Greg Frantz and Howard Benson were awarded SCC's highest award, the Carl E. Pelander Award for Service, for their contributions to SCC at RMPL. The RMPL also serves as the meeting place of Chapter 27, one of SCC's largest local chapters.*

*The Rocky Mountain Philatelic Library has served as the model for the now five-year-old Northern Philatelic Library. Former President, Sergio Lugo, served as mentor to NPL founder, David Bushard, who along with other NPL board members visited RMPL for advice and inspiration- not to mention a trove of maps and other literature donated to NPL by RMPL. Thanks for all the support!*

*Rocky Mountain Philatelic Library has enhanced my philatelic life as a member of Scandinavian Collectors Club and Northern Philatelic Library. I fully support all of its endeavors.*

Steve Lund  
President, Scandinavian Collectors Club  
Board of Directors, Northern Philatelic Library

## Western History Collection / Railroad Collection

*I only recently became acquainted with this wonderful Library in 2012, when I visited the ROMPEX show. It has brought back some great memories of the time when I started my Colorado postal history collection in 1952, with the aid of Dan Stone and Jack Willard, both members of the Collector's Club of Denver in the 1950's.*

*Dan and Jack were special friends, and we worked on the early ROMPEX shows together. I am very much impressed with the Library, and both Dan and Jack would be so pleased to know how well the Library has done in recent years.*

*Best wishes,*

*David New, member 997, ROMPEX Chairman 1954 & 1955*



## The Czechoslovak & Lighthouse Libraries

The "Czech Library" is a rich resource at the RMPL that most people do not even know about. It is the most complete library of philatelic literature available in the USA for finding information about, and doing research on, Czechoslovak, Czech, Slovak, Carpatho-Ukraine, Bohemia & Moravia, or Eastern Silesia philately.

While probably 60% of the books and journals are in Czech/Slovak, the rest are in English. These include such valuable resources as the entire 77 years of *The Czechoslovak Specialist* (the journal of the SCP), and 71 years of *Czechout* (the journal of The Czechoslovak Philatelic Society of Great Britain).

The Rocky Mountain Philatelic Library is home to the Lighthouse Stamp Society library and archives. All back issues of the journal, reference

books, and catalogs are available. A large lighthouse postcard reference collection of over 18,000 cards is also included in the holdings.

The journal of the Society, *The Philatelic BEACON*, is published by the RMPL. To

check out material or for more information contact: [dalene@lighthousestampsociety.org](mailto:dalene@lighthousestampsociety.org).



## Society Journal Printing

The Rocky Mountain Philatelic Library provides many services to the local and national philatelic communities. Among those services is the printing of society journals using a production Xerox copy machine. The machine was leased in 2011 to print the library's newsletter *Scribblings*, auction catalogs, and other library publications.

With the machines limited use, the Board of Directors decided to offer the printing services to local philatelic societies as long as they would provide a representative to be in attendance when the publication is being printed. The library provides a print coordinator to set up the machine using a .pdf file and begin the run. Once the run is approved the

society representative monitors the machine.

A number of the societies use the time to prepare their mailing as the journals come off of the copy machine. The societies and journals printed include: Colorado Postal History Society - *Colorado Postal Historian*, Europa Study Unit - *Europa News*, Great Britain Collectors Club - *Chronicle*, International Cuban Philatelic Society - *Journal of Cuban Philately*, International Society of Guatemala Collectors - *El Quetzal*, Lighthouse Stamp Society - *The Philatelic Beacon*, North Carolina Postal History Society - *North Carolina Postal History Society Journal*, and Post Mark Collectors Club - Colorado Chapter - *Colorado Chapter News*.



# VOLUNTEERS

At the beginning and throughout the subsequent 23 years, we have been staffed at all levels entirely by volunteers. While most of these wonderful people have also been stamp collectors, many have had skills that we needed and that they enjoyed using. The most notable of these has been Ellengail Beuthel, our librarian, whose work has been a continuous thread through the development and growth of the RMPL. In recognition of this, in 2013 she was given the Nicholas G. Carter Volunteer Service Award for Local Service. This is the highest award that the APS can give to a volunteer. A more recent non-philatelic volunteer is Chuck Baker who maintains our computing hardware. As this equipment has become essential to our operations, so has he become ever more important to keeping the library running.



But there are many, many others who do less specialized tasks. These jobs include sorting stamps for sale, putting together our auctions, managing the library as part of the Board of Directors, providing technical services (building maintenance, computer software support, grounds maintenance), keeping the library open on a daily basis, and many other jobs.

We always need more, though, as new jobs are created and current volunteers get old or move away.

## ROCKY MOUNTAIN PHILATELIC LIBRARY - FINANCIALLY A STRONG ORGANIZATION

Financially the Rocky Mountain Philatelic Library (RMPL) ended 2015 in a very strong position. During 2015 the income of the RMPL exceeded expenses by over \$40,000. Each year the RMPL holds two auctions which earn the RMPL its largest source of income. These auctions offer the philatelic material donated to the RMPL during the year. Other sources of income are membership dues and “mart” sales of donated stamps. There are various categories of membership with varying levels of dues. The activities of the RMPL are conducted entirely by volunteers. The RMPL has no employees. Currently the RMPL has no liabilities. At the end of 2015, the assets of RMPL exceeded \$600K.

The RMPL owns two buildings outright which are located on adjacent lots. During its ownership of this building the volunteers of the

Library have made numerous improvements to upgrade the meeting spaces and to improve the shelving of the special collections. The Board of Directors is currently considering additional significant improvements to this building.

In addition to the real estate assets, the RMPL owns significant personal property including over 14,000 books, stamp and supply inventories, reference collections, a map collection, furniture, fixtures, and electronic and digital equipment.

Each year the Board of Directors of the RMPL adopts a budget to guide its financial affairs. Recently a Finance Committee has been established to oversee the RMPL’s current financial affairs and to propose longer range actions.

# OUR VIDEOS

by Joe Lanotte

## How The RMPL Videos Began

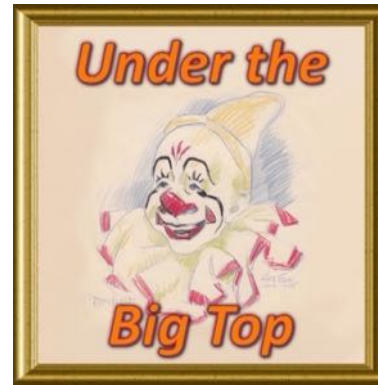
In September of 2012, I approached the then president of the Rocky Mountain Philatelic Library, Sergio Lugo, and presented the idea of having the Library produce video tutorials, drawing on the vast philatelic knowledge of its members. The idea was to produce videos that were both entertaining, as well as educational. Of course, an additional benefit would be the publicity that the Library would receive. Both the president and the Board of Directors gave their blessing and allocated a budget. We were off and running!

The subject for our first video was "Tasmania Pictorial Stamps," the first of a two-part series. Thanks to the efforts of Ron Hill, who provided the original scripts and media materials, and Ron Mitchell who provided expert script editing and media special effects, the first video tutorial was born. Since then, through the hard work of Library members too numerous to mention, the Library has produced 12 videos. As word spread, we were approached by the American Topical Association to jointly produce a video about the circus, which is titled "Under the Big Top". The library is now in the initial stages of jointly producing a video with the Military Postal Historical Society about the Greco-Turkish War 1919-1922. It is our goal that in the near future, more philatelic associations, societies, and clubs contact the RMPL with the hope of jointly producing videos.

The work involved in producing a video is not trivial. On average, it takes about 2-3 months of hard work by many people to edit scripts and collect and arrange media, along with the final assembly of the video and any special effects needed. Our efforts are aimed at making the video no longer than 10-12 minutes whenever possible. We pack a lot of information into those few

minutes, with the intent of leaving the viewer wanting more.

We invite everyone to view our videos. We are sure that both collectors and non-collectors will find something in each that will stimulate their interest, as well as something educational providing that "Hey, I didn't know that" moment.



## Our current list of videos include:

*Tasmania Pictorial Stamps – Part 1, Part 2*  
*US – German Seapost 1891-1939*  
*RMPL Denver Youth Stamp Club*  
*Jewish National Fund – Labels with a Purpose*  
*Under the Big Top*  
*The Elements of Postal Security – Part 1, Part 2*  
*Scouting on Stamps – Part 1, Part 2*  
*Dragons on Stamps*  
*U.S. National Parks*

All of our videos can be viewed via our web site at [www.rmpldenver.com](http://www.rmpldenver.com) under catalog > videos, or on Youtube.com by searching for rmpldenver.

Happy Viewing!

## BORROWING BY MAIL FROM THE RMPL

Although most of our members live in the Denver area, about 15% of the membership lives beyond a reasonable commuting distance from the RMPL. Besides *Scribblings*, which we mail worldwide, another benefit that we provide to our more distant members is borrowing books by mail.

To borrow a book from the RMPL you must be a member although you can join during the borrowing process. To find what you need you can search either our online catalog or use the Union Catalog. If the RMPL is the best place from which you can borrow, either put in a request through our website or email us with your request. Rules

for borrowing (cost, how long you can have a book, what books can only be used in the library, etc.) are on our website.

If you only need a few pages (up to about 30 or so; we are flexible) and know what they are or are about, we also provide a research and copying service. At 10¢ per page plus postage, we will copy and send you what you want. If extensive research is needed there may be an additional charge.

It is important to realize that this is not the same as an interlibrary loan. You must be or become an RMPL member and we send the book directly to you, not to a library near you.



# THE MAP ROOM

By Steve Schweighofer

Where would a person look for a 1940s road guide to the British Isles, detailed maps of Taiwan of the early 1900s, or a railroad valuation map of Oakes, Colorado? Start in the map room!

There was a time when the Library's map collection took up only a couple of file drawers, initially organized by Bill Dunn, and which included mostly state road maps and National Geographic maps. Through the generous donations of maps and map cabinets, the map collection has steadily grown now, occupying its own entire room



which is located in the north end of our new building (7070 East Asbury). The collection has been reorganized, and is again available for use.

The maps in our collection exist in two forms: flat maps in large, specially-sized wide map drawers, and folded maps in filing cabinets. Both are organized in easily recognizable and understandable categories, ranging from the entire world and regions to countries, cities and towns.

This new sorting arrangement enables a researcher to quickly find his or her area of interest. The collections of maps for Colorado and California are substantial. Among the Colorado varieties are: region, county and city, highway and even National Parks and Forests.

The following samples are types of maps most commonly used while researching in the map room:

**Topographic maps** are useful in studying the area around a town site, mine or region, or just determining the "lay of the land". Sure, topographical maps are available online, but those are usually the most recent editions, and our collection has older maps dating to the early 1900s. Studying old maps for an area of interest may also help understand the political changes and history of an area.

**Historical Maps**, mainly of Colorado, show the locations of early settlements, trails and wagon roads. Some of these early roads have familiar names, which we recognize today as major highways.

**Railroad maps**, many of Colorado and adjacent states, show the locations of long-since-gone railroads and towns. We also have Colorado railroad valuation maps on microfilm.

Other not-so-common maps are:

**Outline maps** are simple outlines of countries and US states, and are useful as visual aids for specialty collections or exhibits, to illustrate the location of a specific town or area.

**Pioneer trails:** Have you ever wondered about the exact locations of the Oregon Trail, the Santa Fe Trail or what the areas are like today? These famous trails passed through or near Colorado, and are revisited, each in their own book.

**United States Post Office Department Post Routes**, railroad and related maps – to determine the route or method a particular piece of mail had traveled. The USPOD Post Route maps collection is far from complete, but does contain several maps of Colorado and the surrounding states from different periods.

And some of our maps are out of this world! Yes, we have maps of the solar system, the Milky Way, even the entire universe. We also have maps of the unseen world: the depths of the oceans.

General world atlases for a wide range of years are found in the book collection in the main library building, but there are two books there that are also in the map room, and these are excellent starting places:

***Where in the World?*** is logically arranged by continent, country and then timeframe.

***The Stamp Atlas*** is also very helpful with research. Of the six sections in this book, the most useful are Section One, "Gazetteer of the Philatelic World Since 1840"; Section Two, maps of "dead" countries; and Section Three, maps of current stamp-issuing entities. Section Two is the largest of any section in this book, and contains not only "dead" countries, but also occupied lands and Confederate states.



# THE RMPL PUBLICATIONS PROGRAM

by Sergio Lugo

## Beginnings

The purpose of the publication program was two fold: 1) To promote the RMPL's educational mission, and 2) To spread the name of the RMPL among library and philatelic literature circles.

The program began by promising to edit materials of Jack Willard from the two-page article he had written years before into a full-fledged hardbound publication. The result was the book *Camp Genter* based on Jack Willard's materials, published by the RMPL and marked with the RMPL logo to denote that it was a Rocky Mountain Philatelic Library authorized book.

## Accomplishments

A total of four books have been published. The books are listed below with awards received.

- ◆ ***Camp Genter***: Colorado Ghost Town Mail. Authors - Jack Willard & Sergio Lugo. Editor: Sergio Lugo, 98 pages. Gold award winner at NAPEX, StampShow, Chicagopex 150 books printed.
- ◆ ***Mexico's Denver Printing of 1914: Postage and Revenue Stamps for the Provisional Constitutionalist Government***. Hard Bound: 2010. Author Ron Mitchell; Editor Sergio Lugo, 140 pages. Gold award winner at NAPEX, StampShow, Chicagopex; Reserve Grand winner at NAPEX; Large Gold at Brasilia 2014. 150 copies printed in two installments.
- ◆ ***Danish Ore Bi-Color Issues - A Primer***. Author: Peter Bergh; Editor - Sergio Lugo. Soft bound, spiral

bound book, 2012. 83 pages. Silver medal winner at NAPEX, StampShow, Chicagopex. Sixty copies printed.

- ◆ ***Parks, Postmarks & Postmasters, Post Offices within the National Park System***. Author, Paul R. Lee II; Editor - Sergio Lugo. 2014. 251 pages. Silver medal winner at StampShow, Vermeil winner at NAPEX. One hundred copies printed.

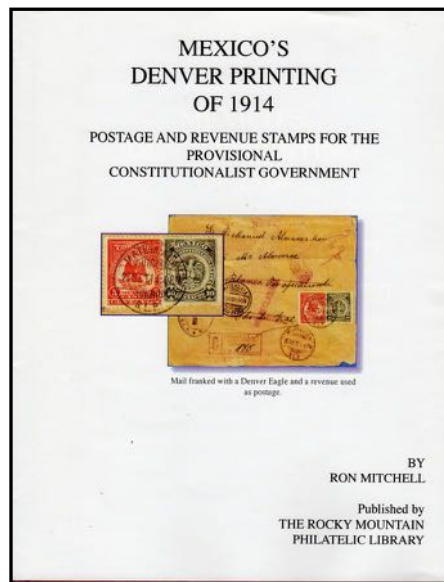
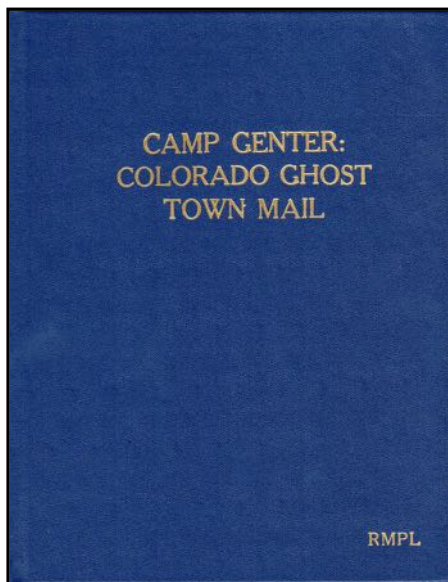
## Program Objectives

The objective of the publications program has always been one of producing high-quality books, flawlessly written and edited, illustrated liberally and having a wide appeal to the reading public and to the research associated with each publication. Each publication, we believe has achieved these distinctions.

## Future Aspirations

A fund should be established (akin to the Stuart Rossiter fund at the Chicago Collectors Club), that would fund such publications without having to intrude on the RMPL's annual monetary funds. That fund, after initial capitalization, and following donations, should be self-sustaining.

A fifth book has been in the works for nearly three years, centering on the Railroad Post Offices of Colorado. Its author, Michael Maselli has created a very comprehensive study of the subject based on information in Jack Willard, Bill Bauer, and Jim Ozment files from the early 1970s.





# EDUCATIONAL ACTIVITIES

It is said that the difference between a stamp accumulator and a philatelist is knowledge. Finding the right book, article, or reference is important, but equally important is access to experts, perhaps even mentors, who have “been there and done that.” Part of the Library’s menu of services involves educational activities. These start with youth programs, include daily informal interaction and discussion, regularly schedules society meetings, and OLLI educational outreach presentations for life-long learners who are over 50 years old.

## RMPL Young Stamp Collectors

A monthly “club” meeting offers a variety of activities, including stamp collecting skills and tools, assistance in building collections, care of philatelic material, and much more. These young collectors not only exhibit, but have produced multi-frame exhibits for RMSS. The full range of resources of the Library are accessible to youth and their families (membership is offered, but not required).

## Boy Scout Mentoring

RMPL members mentor Boy Scouts through local Merit Badge “Colleges,” and participate annually in the Denver Scout show.

## Society Meetings

In any given month, there are 12-15 societies that meet at the Library, typically in the Annex Building meeting room. Most of those meetings feature presentations, show and tell, and wide-ranging discussions—all of which are open to any visitor. For schedules, just check the bi-monthly *Scribblings* back page for listings of activities.

## OLLI—World History Through Stamps

For those who believe in life-long learning, OLLI programs are available in a number of Denver locations. Members of the RMPL are regular presenters, focusing on history and using stamps as illustrations. Propaganda, national treaties, the creation and

development of national identities, science, the relationship between the mail and cultural development, and sociology have all been subjects of discussion. One presenter does his entire two-hour class dressed as and entirely in the persona of Thomas Jefferson.

## Why I support the RMPL

*I support the RMPL, always have and always will. Why? Because I knew the people who made it happen, gave it birth, and nurtured it to what I think could reasonably be called maturity. It is, after all, the people in it that make stamp collecting the greatest hobby. Why? Because I was one of those who told the boys they were crazy, and thank God they did not listen to me! Why? Because the more a stamp collector knows, the more enjoyment he gets from his/her stamps and covers. Only when you get out of the catalogues and into the literature, does that kind of learning really take place. The RMPL has made Denver the mecca for stamp collectors, and I am always gratified to read in the Scribblings of all the myriad activities at the RMPL. If you are going to be in Denver, don't miss the RMPL. Plan your trip around it. Joe Crosby, Oklahoma City, OK. (formerly from Denver B.T.L. (Before the Library)).*

## SECOND SATURDAY PROGRAMS AT THE LIBRARY



Second Saturday programs are sponsored by the RMPL and attract a friendly group of folks who are interested in a specific subject, or who are interested in learning more about an area of philately that may be new to them. Programs are presented monthly on the second Saturday at 9:00 a.m. in the Annex Building meeting room.



# STAMPS FOR SALE!

*The Rocky Mountain Philatelic Library is a great place to find stamps that are needed for your album, browse thru books on the subject(s) you collect, read Linns and other philatelic journals, visit with a superb staff that is willing to help you wend your way through the Library, meander thru the boxes of covers, and check the catalog to see what other philatelic libraries own. In all, it's a fun place to spend a day, or several. Scribblings, the library's publication, is a well written, informative newsletter, and exciting to read.*

Civia Tuteur



The Rocky Mountain Philatelic Library operates with a staff of 80+ volunteers. Half of these volunteers handle stamp sales functions: soaking, sorting, cataloging, filling sales books, etc. We believe that the RMPL is the largest stamp mart in the Rocky Mountain West. With literally hundreds of binders chock-full of material from which to choose, the Library is a mecca for any collector looking to fill their albums. Prices start at a nickel with stamps usually sorted by country or topic. There are also bins of covers for the postal history collectors and dozens of glassine-filled boxes mostly of U.S. material.

We have two annual auctions and one country lot sale. One auction is held in conjunction with

the Rocky Mountain Stamp Show (formerly known as ROMPEX). It consists of higher value stamps, sets and covers with a Scott catalog value of \$20.00 or more. The second is a Large Lot Auction in autumn consisting of philatelic supplies, collection remainders and large cover lots. The Country Lot Sale is a net price sale in midwinter.

Access to the Library's mart material is a constant draw for local collectors and a special attraction for those visiting from out of town. While we encourage membership, the library facilities, including the stamp mart, are available to anyone who visits. However, only members may check books out.



*Congratulations to you and all the folks at RMPL on what you have accomplished. They persuaded collectors from all over the country -- and I dare say all over the world -- to join with them by becoming members, by buying a square foot of carpet or just by opening up their wallets to make this dream come true. As a result the RMPL is a great library. But it is more than a library. It is a philatelic center serving the philatelic community with a wide range of educational, recreational and social activities. I am pleased to have been a member of the RMPL from its earliest days. Thank you for what you do for the hobby. Keep it up!*

*Ambassador Robert E. Lamb  
State College, Pennsylvania*



# THE GARDEN AT THE RMPL

by Tonny Van Loij

In 2009, the Board members of the Rocky Mountain Philatelic Library (RMPL) were offered the chance to purchase the structure adjacent to our original Library building. After a few meetings and some consulting, the deal was made, and a few weeks later, I was approached by RMPL President Sergio Lugo to see if I would consider constructing a garden next to the new building. At that time, I had been a volunteer at the Denver Botanical Gardens for nine years and had worked for 20 years as a florist before retiring.

But, keep in mind, I was also a 50+ year stamp collector! After some time considering it, I accepted the challenge and started to make plans for the creation of a garden that would be nice, representative, and use the least amount of water. The total available area was about 5,000 square feet, between two streets. About 1,200 square feet were being used by a neighbor as a vegetable garden, and another 2,500 square feet was just unused. This left 1,300 square feet for the garden. The area was a 30-year-old graveled parking lot!

I started by building the garden perimeter using large rock and dug up the parking lot with a pickaxe with the help of several volunteers. We began to get an idea of what it might look like. Along the outside of the garden, we made a three foot wide area, where we had to dig 1 ½ feet deep to be able to mix the gravel with some good garden soil, with mulch and compost. This part took about five weeks. After the hardest work was done, in the summer heat, we could begin to think

about planting some flowers. Since I was still volunteering at the Denver Botanical Gardens full time, I received flowers, plants, and compost from them for our garden, all for free!

After the summer of 2009, we began to work on the back side, walling off the sloping area, so it could become the new vegetable garden for our neighbor. When 2010 came along, it was nice to see some flowers growing in the front garden and, in time, the vegetables in the vegetable garden.

We still had to fill the space where the veggie garden *used* to be and that is where I decided to build a different type of garden; one that would need no irrigation, or additional water. Plants range from native flowers and grasses to desert and drought-tolerant varieties.

The middle garden is divided from the front garden and the veggie garden by a wooden railing, and ornamental grasses and shrubs. There, I put in an Alpine garden, using vegetation that grows and does well above 10,000 feet altitude; pines, hardy cacti, etc. For decoration and flower beds, I used natural materials.

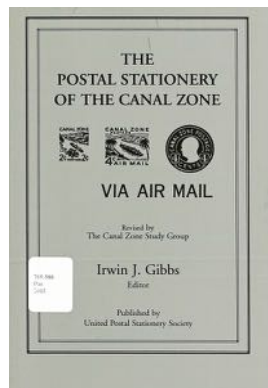
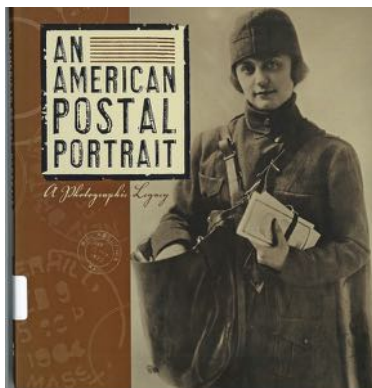
All this was done on a shoestring budget and a lot of good will. Ever since the first phase of the garden was completed and flowers began to bloom, we had neighbors that came over to look at the results. We have some outdoor furniture on the patio for people to sit and enjoy the garden. Some events are held there, too. Now after six years, it's a lovely thing to see. If you visit the RMPL or you're attending the Rocky Mountain Stamp Show, please come and visit the garden. Sit, relax, have a drink, and see how beautiful the world can be!



# WHAT'S NEW ON THE SHELVES

## UNITED STATES

*An American Postal Portrait: A Photographic Legacy*, published by the United States Postal Service Checklist of Handstamp Dated Precancels used by Sears, Roebuck and Company (RC) in Chicago Illinois 1938-1991, compiled from the collection of Carl Moore, Jr.



*The Postal Stationery of the Canal Zone*, edited by Erwin J. Gibbs, USPS

*United States Postage Stamps Illustrated and Identified*, published by Scott Publications (1938)

*United States Stamp Society Research Paper #19: A Type Written Transcription of the U.S. Post Office Dept. Stamp Bill Book Numbers for the Issue of 1870 Ordinaries 1870-1879; Research Paper #20: Selected Records from the Files of the 3<sup>rd</sup> Assistant Postmaster General, 1869-1889*, both papers by Ronald A. Burns

*U.S. Official Mail: A Study of the Meter Types and Known Major and Minor Varieties*, by Joel A. Hawkins

## AFRICA

*Cape & Natal Philatelic Journal* (Vol 18 #2 2015; Vol 18 #3 2015; and Vol 19 #1 2016)

## ASIA

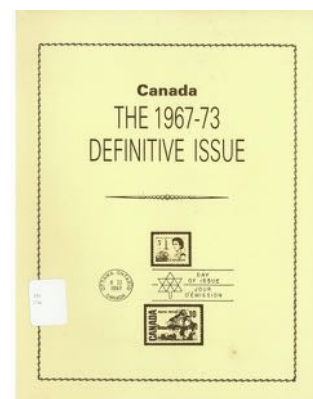
*Chinese Postage Stamps Catalogue, Taiwan Issues* (Standard Edition), 1971

## EUROPE

*Magyar Posta-és Illetékbélyeg Katalógus: Díjegyves Postai Nyomtatványokkal* [Catalogue of the Postage and Revenue Stamps of Hungary with Postal Stationery], 2016-2017

## NORTH AMERICA

*2003 Unitrade Specialized Catalogue of Canadian Stamps Including New Brunswick, Nova Scotia, Prince Edward Island, British Columbia and Vancouver Island, and Newfoundland*, published by Unitrade Press



*Canada: the 1967-1973 Definitive Issue*, edited by Douglas C. Irwin and Murray H. Freedman

*Catalogue of the Federal Revenue Stamps of Canada*, by Christopher D. Ryan

*The Revenue Stamped Paper of Mexico 1821-1876*, by Donald O. Scott and Frank A. Sternad

*Small Stage Coach Companies of Mexico*, by Jay Grace Walmsley

## CENTRAL & SOUTH AMERICA

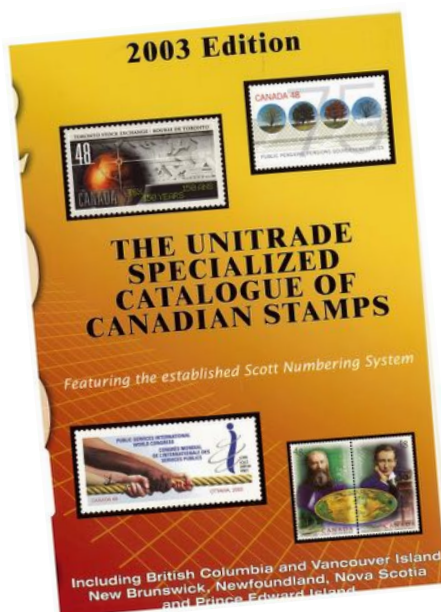
*Falkland Islands & Dependencies: World War II Mail Censorship*, by Nigel Kaye

*Falkland Islands Flower Definitives 1968-1974*, by Malcolm D. Barton

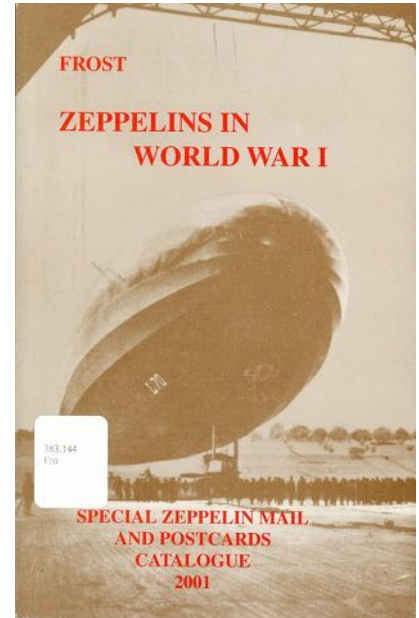
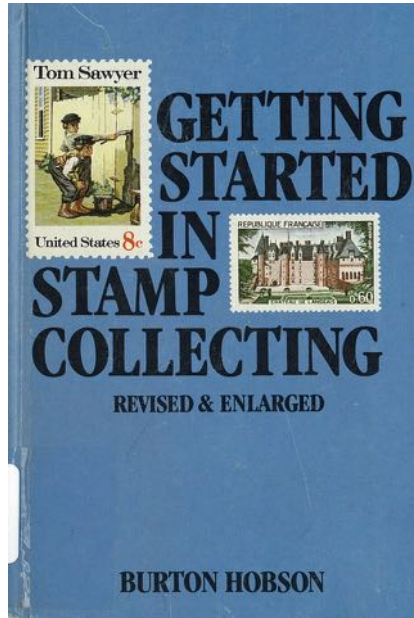
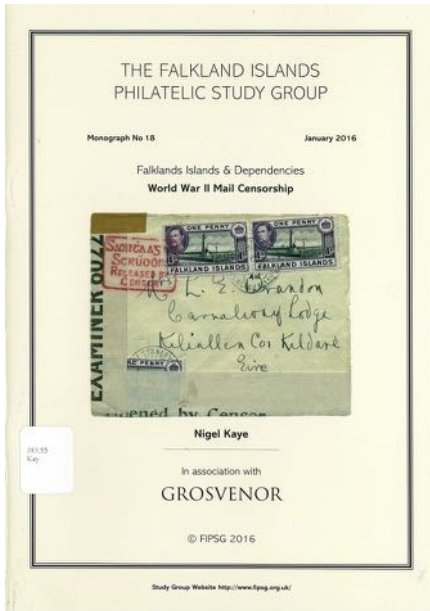
*Falkland Islands QEII Sterling Commemorative Issues 1953-1970, Part I*, by Kim Stuckey

*The Official Cachets of the Falkland Islands*, by Frank G. Mitchell

*Pacific Steam Navigation Company [PSNC] Steamers 1840-1940*, by Clive M. Perkins







*Postcards Picturing Ships of the Pacific Steam Navigation Company in the Port of La Pallice-Rochelle*, by Ken Burley

*Ships on Stamps: Watercraft Philately*, volumes 1-56

*South Georgia: The Provisional 'Paid at/At' Handstamp 1911-12*, by Hugh A. Osborne

*The Olympic Games*, revised 1983, published by the U.S. Olympic Committee

**TOPICAL**

**MISCELLANEOUS**

*Catalogo Mondiale Affrancature Meccaniche Basketball al [World Catalogue of Basketball Meter Cancellations until] 31 December 2004 (updated through 2007)*, by International Filabasket Society & Luciano Calenda

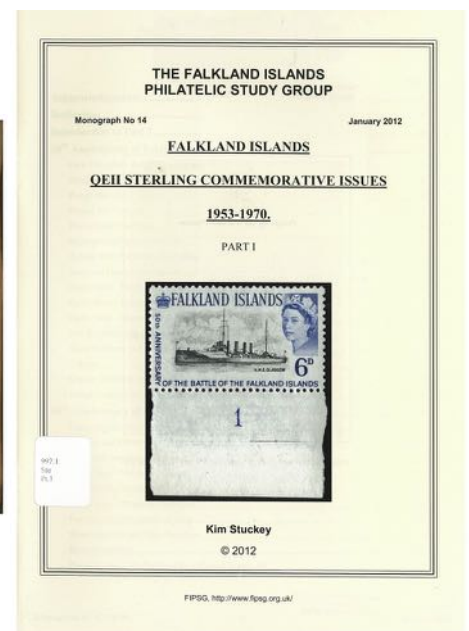
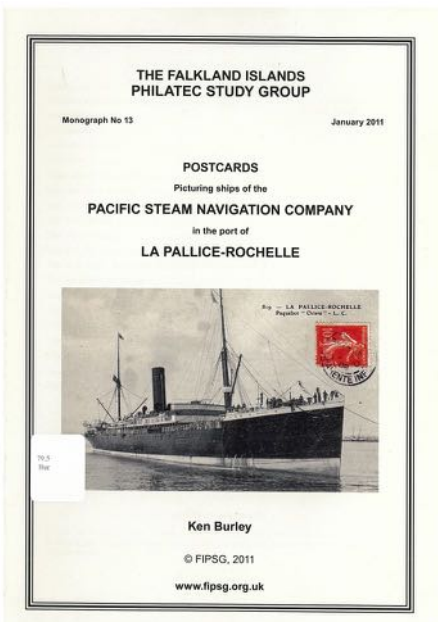
*The Cal-Rev'R Newsletters 2000-2001* [California Revenue Stamps]

*Catalogo Mondiale Annulli Basketball al [World Catalogue of Basketball Cancellations until] 31 Decembre 2003*, by International Filabasket Society & Luciano Calenda

*The Congress Book* (2014), published by the American Philatelic Congress

*Getting Started in Stamp Collecting*, by Burton Hobson

*Mailing May*, by Michael O. Tunnell





*Michel Europa-Katalog West 1996/97: A-L and M-Z* in separate volumes

*Scott's Standard Catalogue of the Local Stamps of the United States and China* (1909)

*Scott's Standard Catalogue of the Local Stamps of the United States, China, and Philippine Islands* (1912)

*Goodwin's Specialized United States, 1919*, by Frank E. Goodwin

*Special Zeppelin Mail and Postcards Catalogue, 2001: Zeppelin Airships in World War I, 1914-1918*, published by Frost Publishing Co.

*Stamping Around: Newsletter of the Mid-Cities Stamp Club*, Arlington, TX, 1973-December 2014

**AUCTION CATALOGS**

*505<sup>ème</sup> Vente sur Offres: Collection de France 1849-1900*, catalog for a Roumet auction March 2007

*The Brigham Collection of Canada, Part X Small Queen Issue, 1870-1897*, catalog for a Brigham auction April 2016

*The David L. Jarrett Collection of United States Postal Markings*, catalog for a Christie's Robson Lowe auction October 1990

*The David T. Beales III Collection of United States Military Posts (Forts)*, Part 1 descriptions, part 2 photographs, catalog for a Daniel F. Kelleher auction June 1988

*Gems of Philately*, catalog for a Schuyler Rumsey auction March 2016

*The George J. Kramer Collection of Wells Fargo, a Collection of Western Covers and a New Find of Crittenden Pony Express Covers*, catalog for a Robert G. Kaufmann auction September 1990

*The Jose Castillejo Collection of Guatemala, 1871-1886*, catalog for a Spink auction June 2016

*The New York 2016 Sale*, catalog for a Schuyler Rumsey auction June 2016

*The Robert L. Markovits Collection of Special Delivery*, catalog for a Schuyler Rumsey auction June 2016

*The Rollin C. Huggins Jr. Collection of United States Official Issues*, catalog for a Robert A. Siegel auction April 2016

*The Stefano Fantaroni Collection of the Kingdom of Italy*, catalog for a Spink auction June 2016

*United States and Confederate States Postal History*, catalog for a Robert A. Siegel auction May 2016

*Western Postal History*, catalog for a Schuyler Rumsey auction December 2015

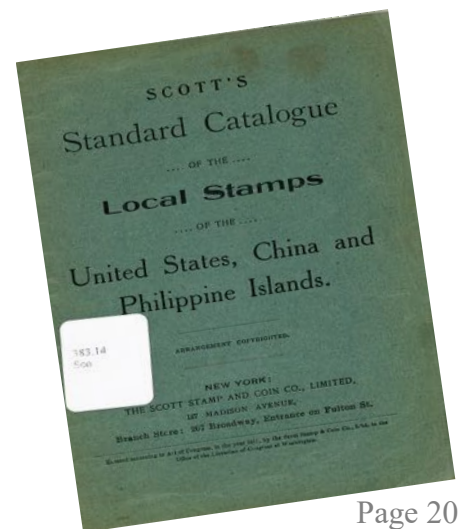
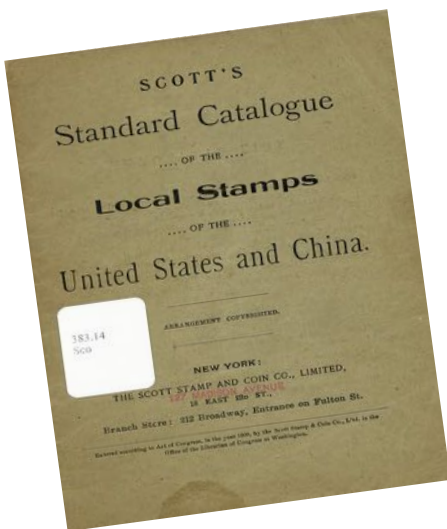
*The Westpex Sale*, catalog for a Schuyler Rumsey auction April-May, 2016

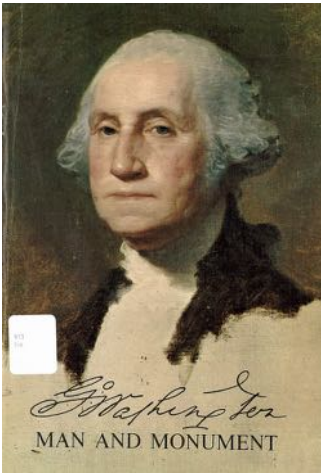
**NON-PHILATELIC (Railroads)**

*Trains, Tracks and Travel*, by T. W. Van Metre

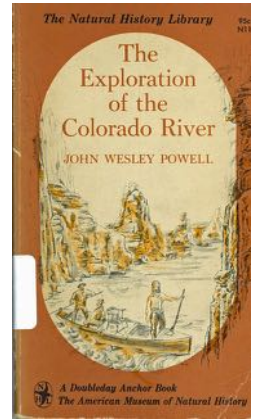
**NON-PHILATELIC**

*Caribbean Seashells: A Guide to the marine Mollusks of Puerto Rico and Other West Indian Islands, Bermuda, and the Lower Florida Keys*, by Germaine L. Warmke and R. Tucker Abbott





- Exploration of the Colorado River*, by John Wesley Powell
- G. Washington, Man and Monument*, by Frank Freidel and Lonelle Aikman
- How to Know the American Marine Shells*, by R. Tucker Abbott
- Mollusks*, by Paul Bartsch
- Sea Shells of the World*, by R. Tucker Abbott
- Seashore Life of Florida and the Caribbean*, by Gilbert L. Voss



# Our Vision for the Future...

The most ambitious – and longest term – project was recently proposed by Lewis Bussey, a member of the RMPL and an architect. It would include connecting the two buildings, adding a stairway between the front and back sections of the newer building, and creating a new vestibule and front desk for the combined buildings. This is shown in the preliminary drawing below. The Board has agreed in principle to the concept but many details, including funding, remain to be worked out.





## SECOND SATURDAY PROGRAMS AT THE LIBRARY

Second Saturday programs are sponsored by the RMPL and attract a friendly group of folks who are interested in a specific subject, or who are interested in learning more about an area of philately that may be new to them.

Contact Jim Kilbane if you would like to present a program.  
His email is [aurora\\_80017@yahoo.com](mailto:aurora_80017@yahoo.com)



**July 9, 9:00 a.m.**

### Collecting Papua New Guinea

Presented by David Weisberg



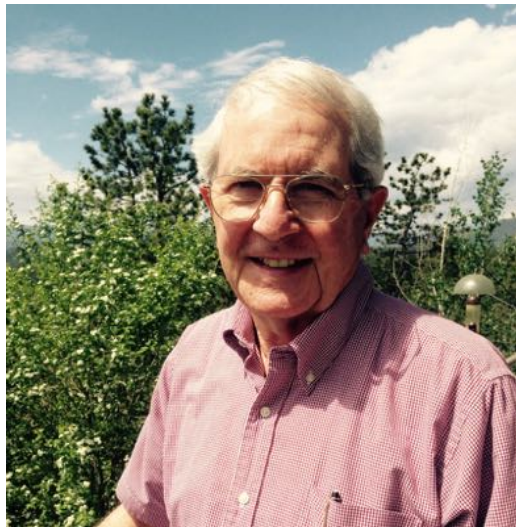
Papua New Guinea is a relatively new country that evolved from a series of British, German, Australian and New Zealand territories. It is not commonly visited but has an interesting philatelic history with stamps that reflect its natural beauty and interesting population. This talk will showcase these stamps and how numerous earlier territories evolved into PNG as a result of two world wars.



**August 13, 9:00 a.m.**

### “A View of World Stamp Collecting as Seen from Earth Orbit.”

Presented by Richard Truly



Many RMPL members learned of exotic, far-away places and their geography, currency, capitals, language, etc. from their early years of learning philately. This Second Saturday is a round-the-world tour of many of those countries, as viewed from the windows of the Space Shuttle - and identified by their stamps!





**NEW MEMBERS**

The RMPL is pleased to welcome the following new members who have joined the library during the past two months.

- ◆ **Leven Parker**, Evansville, WY – Collects Wyoming Postal History, U.S. Mint, Foreign 1840-1940.
- ◆ **Bill Miles**, Denver, CO – Collects U.S.
- ◆ **Rick Barrett**, Houston, TX - Collects Cinderella Stamps.
- ◆ **Dale E. Smith**, Kansas City, MO - President America Topical Association - Collects AIDS on Stamps, Stamps on Stamps, and Pharmacy Stamp #1473.

**RMPL BOARD MEETING SUMMARY****Meeting of May 19, 2016**

Prepared by President John Sinski

Meeting called to order at 6:30 p.m.

All Board members present except Steve McGill and David Weisberg. Steve Nadler was also present. The March board meeting minutes were approved.

**Financial Report**

Tim Heins presented copies of the Profit and Loss Statements and Balance Sheets for Jan 1 – Dec 31, 2015 and Jan 1 – Mar 31, 2016. Net income for the year ending 2015 was \$50,000. Net income for the First Quarter 2016 was \$10,000.

**RMPL Audit**

The Finance Committee recommended that we have our audit work and Form 990 completed by Taylor, Roth and Company (scheduled for June).

**Donation Report**

Corresponding Secretary Bill Plachte presented a Donation Report for Jan 1 through May 19, 2016. This report showed that 134 donations were made included 53 monetary contributions totaling almost \$5,500.

**Old Business**

Discussions focused on event planning and our presence at World Stamp Show NY2016. Results were also reported for the RMPL Stamp Auction at Rocky Mountain Stamp Show as follows:

- Winning bids at show - \$19,200.
- Post Show sales - \$2,200 (as/of May 19).
- Post Show sales as/of June 20 = \$5,800
- For a Total of \$25,000.

New RMPL members were approved by Board.

Meeting adjourned at 8:00 p.m.

Next Board Meeting: Thursday, July 21, 2016.

**DONATIONS**

The library thrives on the enthusiasm and generosity of its members. The following members made donations to the library (April through May) (alphabetized by first name). We thank each and every one who has contributed, many of you multiple times.

Alan J Hanks	Lawrence Dunn
Amy E Wieting	Leven Parker
Andrew Wacinski	Linda Pace
Aurora Stamp Club	Ludvik Svoboda
Berthene Ten Eyck	Margaret Rizer
Blaine Thomas	Martin & Elaine Shapiro
Carolyn M Anderson	Mary Ellen Markel
Charles Freise	Michale Fuchs
Charles Peterson	Nadine Petersen
Charles Reed	Nancy Hill
Charles Sandberg	Pamela S Belfield
Chloe A Abercrombie	Paula J Scanland
Collectors Club of Denver	Peter Colwell
Connie Huskins	Peter J Ditlow
Conrad Suszynski	Richard Julian
Craig Buhlman	Richard Palestro
Criss Sakala	Richard Ruth
D R and J E Urquhart	Richard Stucky
Dalene Thomas	Robert & Elizabeth Barzdukas
Daniel Zinn	Robert Jenkins
Don & Ellengail Beuthel	Robert P & Carol Hook Jochens
Duane Cleveringa	Rock Mullens
Edward Hackstaff	Roger & Martha Rydberg
Edward Zamejc	Roger Cichorz
F William Miles	Ronda Morten
Gary G Hendren	Rosemary Reinhart
George Killian	Russell Powers
Henry Siccadi	Scandinavian Collectors Club
Herman Axelrod	Sherman Hamilton
Howard Benson	Shirley L Organ
Jack & Sandra Van Ens	Stephen & Julianne Pacetti
Janette Durham	Stephen & Patricia
Jerry F Eggleston	Sue Dunn
John & Anita Bloor	Thomas Pollard
John C Sinski	Toni S Knight
John Cross	William Crabbs
Joseph & Helen Coffelt	William Mahoney
Joseph C Hunter	William Stolfus/Andrea
Judie K Mitchell	
Karen G Hoffman	
Kay Pride	
Kerstin Meyers	



Hours: Monday, Tuesday, Wednesday, Friday, Saturday 10 a.m. - 4 p.m.  
Thursday 2 - 8 p.m. Closed Sundays and Holidays. Phone: (303) 759-9921

Meeting times and places sometimes change. It is best to call the library or the club to confirm the place and time. A calendar of reserved club times is kept at the library by the Operations Manager, Howard Benson. Clubs should check the calendar regularly and notify Howard at (303) 521-6216 of any changes or updates. All requests to reserve meeting time and space for philately related meetings other than those listed here must be approved and scheduled by Howard well in advance.

### \*\*\* July 2016 \*\*\*

**July 2 to July 4** Saturday through Monday-  
Independence Day Holiday-**Library Closed**

**July 2** Sat-Meeting-1:00 p.m.

Topical Philatelists in Colorado

**July 8** Fri-Meeting 7:00 p.m.

Austria-Hungary Stamp Club (RMPL Meeting Room)

#### Second Saturday at the RMPL

**July 9** 9:00 a.m.

Program by David Weisberg (See page 22 for details.)

**July 9** Sat-Meeting 10:00 a.m.

Mexico/Latin America Club (RMPL Meeting Room)

**July 13** Wed-Meeting 7:00 p.m.

Germany Stamp Club (RMPL Meeting Room)

**July 14** Thurs-Meeting 2:00 p.m.

Cherrellyn Stamp Club (RMPL Meeting Room)

**July 14** Thurs-Meeting 6:30 p.m.

Denver Postcard Club (RMPL Meeting Room)

**July 16** Sat-Meeting 09:30 a.m.

Denver Young Collectors (RMPL Meeting Room)

**July 17** Sun- Great Britain & Commonwealth Collectors Club-No Meetings until September

**July 21** Thurs-Meeting 6:30 p.m.

RMPL Board of Directors

All members are welcome

**July 27** Wed-Meeting 12:00 noon

Denver Stamp Club (RMPL Meeting Room)

### \*\*\*\* August 2016 \*\*\*\*

**August 3** Wed-Meeting AURORA Stamp Club

6:30 p.m. Trading

7:00 p.m. Meeting (RMPL Meeting Room)

**August 11** Thurs-Meeting 2:00 p.m.

Cherrellyn Stamp Club (RMPL Meeting Room)

**August 11** Thurs-Meeting 6:30 p.m.

Denver Postcard Club (RMPL Meeting Room)

**August 12** Fri-Meeting 7:00 p.m.

Austria-Hungary Stamp Club (RMPL Meeting Room)

#### Second Saturday at the RMPL

**August 13** 9:00 a.m.

Program by Richard Truly (See page 22 for details.)

**August 13** Sat-Meeting 10:00 a.m.

Mexico/Latin America Club (RMPL Meeting Room)

**August 13** Sat-Meeting 11:30 a.m.

Rocky Mountain Aerophilatelic Club (RMPL)

**August 20** Sat-Meeting 09:30 a.m.

Denver Young Collectors (RMPL Meeting Room)

**August 21** Sun-Great Britain & Commonwealth Collectors Club-No meeting

**August 24** Wed-Meeting 12:00 noon

Denver Stamp Club (RMPL Meeting Room)

**August 27** Sat-Meeting 1:00 p.m.

Colorado Postal History Society (RMPL Meeting Room)