

# Scribblings

...from the Rocky Mountain Philatelic Library

Mike Milam, Editor

Ellengail Beuthel, Librarian



Vol. 23 - No. 6  
www.rmpldenver.org

2038 South Pontiac Way, Denver, CO 80224  
303.759.9921

November-December 2015  
Email - rmpl@qwestoffice.net

## IN THIS ISSUE

More Than the Eye Can Comprehend..... 1

From the President .....2

RMPL Website Has a New Look.....8

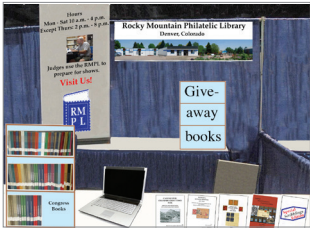
RMSS in 2016... It's Alive .....9

Local Level Exhibits Encouraged.....9

A Touching Philatelic Find ..... 10

RMPL Board Meeting Summary ..... 12

RMPL Publications ..... 12



Getting Ready for NY2016..... 13

What's New on the Shelves..... 14

Help Wanted Print Coordinator ..... 17

2nd Saturday Programs ..... 18

RMPL Videos & DVDs..... 18

New Members ..... 19

Schedule .....20



Patriotism during the "Great War" ...

## More Than the Eye Can Comprehend

by Sergio Lugo

It is not unusual in our hobby to run across philatelic materials and other ephemera that strike us as somehow explainable, but their totality is more than we can wrap our heads around. In many such cases, gaining an understanding of them is akin to the proverbial onion needing to have its layers removed.



So, what may we make of this cover?

Some observers would discount it as merely a pegboard for a lot of pin backs and historical memorabilia. It is also an unsightly, old raggedy cover.

But as a student of World War I social welfare organizations, I knew down deep that this "come hither" cover was yearning to unravel its secrets. The process of peeling back the layers I went through is outlined here to shed light on a complex story of the patriotic fervor that wrapped one family in "The war to end all wars."

(Text continued on page 4)

# Scribblings

Newsletter of the Rocky Mountain  
Philatelic Library

2038 So. Pontiac Way  
Denver, CO 80224

Phone: (303) 759-9921

email: [rmpl@qwestoffice.net](mailto:rmpl@qwestoffice.net)

Hours: 10 a.m. to 4 p.m. daily,

Thursday, 2 p.m. to 8 p.m. Closed Sundays & Holidays

## Editor

Mike Milam

[mdmilam@yahoo.com](mailto:mdmilam@yahoo.com)

## Production Manager/ Layout

Ron Mitchell

[wrmrmitchell@comcast.net](mailto:wrmrmitchell@comcast.net)

## Copy Editors/ Proofreaders

Don Beuthel

Ellengail Beuthel

VeraLouise Kleinfeld-Pfeiffer

Steve Schweighofer

## Librarian

Ellengail Beuthel

Scribblings is published bimonthly by the Rocky Mountain Philatelic Library. The RMPL is a chartered Colorado nonprofit corporation and is an IRS designated 501(c)(3) charitable organization. Membership subscriptions over that for the regular membership, and donations of appropriate philatelic materials, are deductible for US income tax purposes. The Library is a volunteer organization. Financial donations, philatelic books, stamps, supplies, and donations of your time, are welcome.

A basic membership with the RMPL is \$25 a year, and includes checkout privileges and Scribblings. Call for more information.

Knowledge is better when shared. Consider writing an article for Scribblings about your favorite philatelic topic.

President ..... John Sinski  
Operations Manager ..... Howard Benson  
Vice President ..... Jim Kilbane  
Corresponding Secretary ..... Roe Emery  
Recording Secretary ..... Brian Kramer  
Treasurer ..... Bob Blatherwick  
Directors: John Bloor, Steve McGill, Dalene Thomas, David Weisberg. Director Emeritus: Don Dhonau. Ex-officio member, Ellengail Beuthel

Officers and Directors may be contacted through the RMPL.

[rmpldenver.org](http://rmpldenver.org)

## From the President



John Sinski

Our new Website (still [www.rmpldenver.org](http://www.rmpldenver.org)) is up and running. Check it out and be sure to view our latest video, *Under the Big Top* (see page 8).

We've made some changes in the stamp sales area. We merged the 10-cent stamp books into the 5-cent stamp books. This will simplify our work in sorting and posting and may save you a few nickels.

We're also relocating the U.S. nickel boxes from the back into the general sales area. This will open shelf space for books and periodicals, as well as keeping all of the sales material in one place.

The mortgage pay-off for our meeting facility and storage building next door has not been completed yet due to difficulties with the mortgage holders.

We could use more volunteer help working the front desk of the Library (usually three-hour shifts). Please see or call me and I'll explain what's involved and arrange for training.

*John*

### BOARD OF DIRECTORS MEETING

Thursday, November 19, 2015  
7 p.m. - All members are welcome.

More Than the Eye Can Comprehend, cont.



Figure 2. "Welcome Home 27th N.Y. Division" ribbon removed and highlighted.



Figure 3. "National League for Woman's Service" pin removed and highlighted.



Figure 4. "State Defense Committee" lapel pin removed and highlighted.

In light of the New Jersey address barely visible on the envelope, it was considered somewhat odd that the 27th Infantry Division “Welcome Home” ribbon would have been kept since the 27th was solely New York men. I temporarily set it aside to focus on what appeared to be more interesting items (**Figure 2, page 3**).

The first of the pins to attract my attention was the National League for Woman’s Service (NLWS) pin shown in **Figure 3**. I had acquired the lot expressly for this pin, since I was in the process of working on monographs on the social welfare organizations that worked with the American military in WWI.

It was largest ad hoc woman’s organization of World War I, but it is little known today. Nonetheless, its numbers were well into the hundreds of thousands, and its membership was exceeded only by the American Red Cross. Among its many achievements were the creation of the Motor Corps, the establishment of the first serviceman’s canteens in major metropolitan areas, and the Women’s Bureau of the U.S. Department of Labor.

The creation of the NLWS in January 1917 was caught up in the crosscurrents of the politics of the suffragist, prohibitionist, and woman’s movement of the 1910s, as well as the many services to U.S. men in uniform. Its postal history is fragmentary, with most of it centered on auxiliaries in various towns and communities. The peeling back process suggested that whoever had saved the pin was probably a woman involved in local NLWS activities.

The Women’s Defense Work Committee (WDWC), was an arm of the Council of National Defense (CND). It had six U.S. Cabinet Secretaries, and was created in August 1916, as American concerns about a possible entry into the war began to heighten.

In April 1917, recognizing the immense vitality of America’s female population, the CND created the WDWC as its arm to help mobilize American womanhood in support of the American war machine. One of its first steps was to create a system of State and Local Woman’s Defense

The cover (was)  
connected to  
an exceedingly  
patriotic, fervent  
household ...



**Figure 5.** “Liberty Loan” medals and pin backs removed and highlighted.

Committees throughout the nation. In light of the address on the envelope, the State Defense Committee memorialized by the pin in **Figure 4** was probably that of New Jersey. Again, the lapel pin had probably been presented to a woman who, the peeled back layers suggested, was active in both the NLWS and the S.D.C.

Removal of the Liberty Loan related memorabilia as shown in **Figure 5** exposed the shabby condition, as well as other features of this wartime American Red Cross cover. It had been mailed after the cessation of hostilities by the Armistice in November 1918, but before the signing of the



**Figure 6.** “War Camp Community Service” lapel pin removed and highlighted. The words on the pin have been digitally enhanced.

peace in June 1919. Mailed in March 1919, the cover had been sent to either a Mr. or Mrs. Robert Drake.

The Red Cross Seal of 1918 obliterated both the gender salutation and the street address number. But the presence of the pin backs and medals showed that either the husband or the wife had actively engaged in several of the Liberty Loan drives conducted during the war.

It became increasingly apparent that the cover and its memorabilia were, in all likelihood, connected to an exceedingly patriotic, fervent household supportive of America’s involvement in World War I.

Since Liberty Loan promotion (and participation) was a key feature of the woman’s activities of the National League for Women’s Service and the Women’s Defence Work Committee, it was now assumed that the volunteer in this case was Mrs. Robert Drake of Newark, New Jersey, and that Mrs. Drake, with hindsight, had also been a member of Loan Committee and the State Defense Committee.

The War Camp Community Service (WCCS) had more than 700 chapters and local affiliates operating on or near 280+ Army and Naval bases throughout the U.S. It was one of the “biggs.”



**Figure 7.** “United War Work Campaign” lapel pin backs removed.

Specifically, it was one of the “Seven Servants” of the Commission for Training Camp Activities (CTCA) (see **Figure 6**).

The distinct mission of the WCCS was to provide for morale maintenance services in towns and communities throughout the nation. Everything from concerts, movie theater admissions,

*(Continued on page 6)*

socials, entertainment, reading rooms, holiday dinners and much, much more were arranged by the WCCS for servicemen on leave, in part to prevent unruly behavior by droves of young men receiving temporary respite from military camps in neighboring cities and communities. In the case of Newark, the local chapter probably worked with the facilities at Hoboken, from which the vast majority of the 2,000,000 men comprising the American Expeditionary Forces were shipped. The pin, more than likely, had been presented to a male or female WCCS volunteer, which I concluded had been Mrs. Drake.

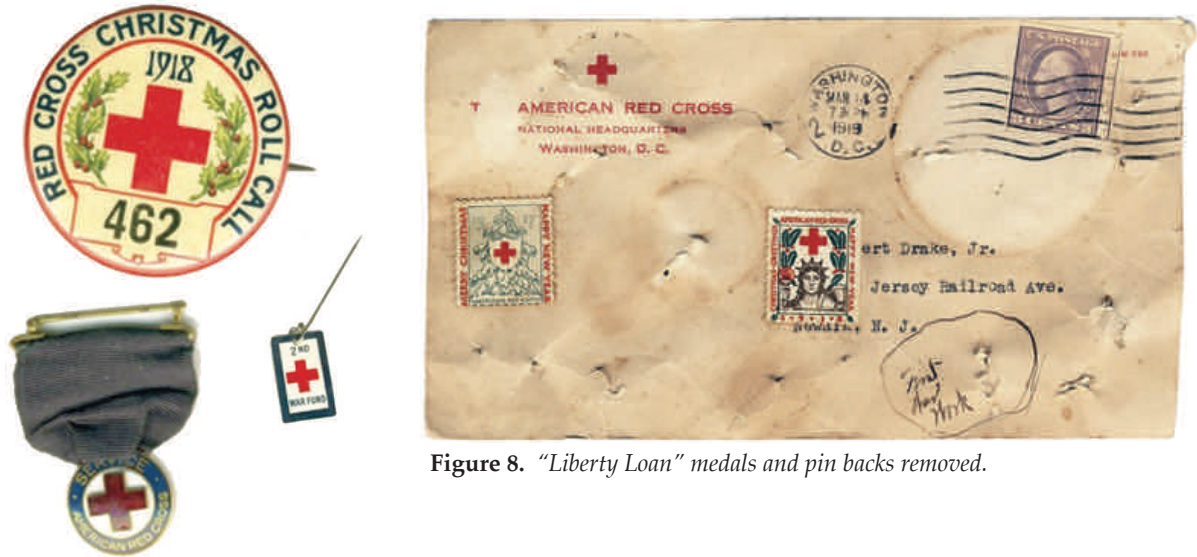


Figure 8. "Liberty Loan" medals and pin backs removed.

The next layer to disappear from the cover were the pin backs for the United War Work Campaign (UWWC) (Figure 7). This campaign was the culminating fund raiser for the "Seven Servants" of World War – namely the American Library Association, the Knights of Columbus, the Jewish Welfare Board, the Salvation Army, the Young Men's Christian Association, the Young Women's Christian Association, and the War Camp Community Service.

The fund drive had been suggested by President Wilson in the summer of 1918, as a means of preventing the progress of the plethora of fund drives undertaken by hundreds of organizations during the war. Its financial goal was \$200 million (in 2012 dollars = \$3 billion). In fact, the campaign raised \$220 million (\$3.2 billion).

The United War  
Work Campaign  
... raised \$220  
million ... nearly  
\$3 billion in  
2013's money.

Conducted in November, 1918, the funds brought in by the drive were to fuel activities of the "Seven Servants" well past the cessation of war after The Treaty of Versailles in 1919. The money also gave rise to internal disputes within the ranks of each of the organizations as to the proper disbursement of funds. Some of those funds were not liquidated until the late 1920s and early 1930s. Mrs. Robert Drake's association with the WCCS would have naturally led to her involvement in the UWWC of 1918.

The removal of the American Red Cross (ARC) memorabilia (see Figure 8) represented the penultimate layer - save the envelope itself. Mrs. Drake's involvement with the American Red Cross was confirmed by the ephemera. The ARC's service during the First World War has been extensively documented. It was the largest of the service organizations concerned with soldier/sailor welfare, but was not considered as one of them. That is because since it was chartered by the U.S. Congress in the early 1900s it has been tasked to engage in welfare relief in cases of calamities and national need.

The memorabilia suggested that Mrs. Drake had been involved in the organization's second



**Figure 8.** Newspaper clipping from March 31, 1918, in The Newark Sunday Call. Note the veils worn by all members of the auxiliary.

ried by mail cancellations, and the 1918 sticker covers the gender and the street address. It seems obvious that the National ARC would not have affixed the sticker obliterating the gender and street number before mailing. It thus seems to be the case that it was applied for memorabilia purposes after receipt of the cover and its contents.

A second service was that of the Surgical Dressings unit of the American Red Cross. The ARC sponsored units far and wide that assembled surgical dressings for the wartime fighting machine through its National Surgical Dressings Auxiliary. Newark had such a unit, as documented by a news clipping from the March 31, 1918, issue of The Newark Sunday Call. The clipping noted within its two thousand word description the presence of a Mrs. Robert Drake among the 31 women pictured in various photographs in the article.

The third and final service addressed clarifies the entire cover. Specifically that was the nursing service which consisted of thousands of nurses serving stateside and shipped overseas to man hospitals and treatment centers for the sick and wounded in the American Expeditionary Forces.

The cover paid the proper rate of the time, namely the three-cent first-class rate passed by the U.S. Congress in October, 1917, as a wartime revenue-raising measure. The rate returned to its pre-war rate of two-cents on July 1, 1919.

In closing, internet searches showed the presence of a Robert Drake household on Newark's Jersey Railroad Ave. Everything else presented herein has been the fortunate confluence of educated guesswork resulting from familiarity with the social welfare organizations of WW I together with the efforts of an unknown person (but probably Mrs. Robert Drake) to memorialize wartime contributions of one family between the two year period of April 1917 to March 1919 activities. What was an unfathomable (and somewhat unsightly) memorabilia piece when first acquired proved to be a lustrous example of one family's devotion to the cause. And truth be stated -- what stories can unfurl from the layers of an onion.

Ed. note: Sergio Lugo is the author of five completed monographs in a set of 12 such monographs focused on the history of social welfare organizations of the First World War. He often illustrates the monographs with postal history.

fund raising campaign (the small pin). Further, she had been presented (possibly by American Red Cross chapter # 462) with a the large button for her work in enlisting members, new and old, in the roll call of all ARC members throughout the country during the Christmas season of 1918.

The demands placed on the ARC in its wartime service are too numerous to recount here, but there were three of particular relevance to this cover. First, was the ARC Christmas Seal program, then in its 11th year. The Christmas Seal program's relevance is shown by the two examples (Scott #'s WX 19 and 21) placed on this envelope. Neither are

What was an unfathomable memorabilia piece proved to be a lustrous example of one family's devotion to the cause.

# RMPL Website Has a New Look

by John Bloor

For the past several months, the Technology Committee at the RMPL has been working with a website development company to design a new website for the library. It is now active. The web address (URL) has not changed, so you won't need to change your bookmarks. You can still find it at [www.rmpldenver.org](http://www.rmpldenver.org).

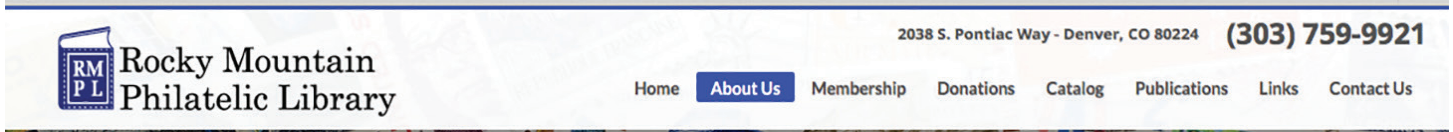
The site looks different, but everything is still there.

Several new features have been added, and others have been improved.

It continues to evolve, so if you have any comments (good or bad), suggestions, or questions, please pass them on to John Bloor ([aerophil59@yahoo.com](mailto:aerophil59@yahoo.com)), Roger Rydberg ([rrydberg5@comcast.net](mailto:rrydberg5@comcast.net)), or Jim Kilbane ([aurora\\_80017@yahoo.com](mailto:aurora_80017@yahoo.com)).

TAKE A LOOK AT OUR NEW WEB PAGES ...

[www.rmpldenver.org](http://www.rmpldenver.org)



ABOVE: This is the new banner across the top of every RMPL web page. It makes it easy to move through the site with just a click. BELOW: A montage of items from the web pages gives a feel for the new design.

## Welcome to the Rocky Mountain Philatelic Library



The RMPL is a privately funded public library, open to all who are interested in stamp collecting. Membership is not necessary to use library materials, but it is encouraged because dues are an important part of the yearly income. Members may also have checkout privileges.

The library is committed to promoting and helping to facilitate the pursuit of stamp collecting as a hobby at all levels. Beginners are just as welcome as experienced philatelists.

More than a dozen stamp clubs and organizations call the RMPL "home," holding their monthly meetings in our meeting room.

There are always two volunteers on duty during regular hours, ready to assist in the use of the library. Assistance to the general public in the evaluation of collections and advice on avenues of disposing of collections is also available.

### 9th Annual RMPL Large Lots Auction



## RMPL Calendar

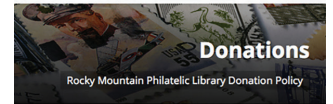
October 2015						
S	M	T	W	T	F	S
				1	2	3
4	5	6	7	8	9	10
11	12	13	14	15	16	17
18	19	20	21	22	23	24
25	26	27	28	29	30	31

## Upcoming Events

- RMPL Closed  
12 Oct 2015  
12:00AM
- Denver Germany Stamp Club  
14 Oct 2015  
07:00PM
- RMPL Young Stamp Collectors Club  
17 Oct 2015  
09:30AM
- Great Britain and Commonwealth Collectors Club  
18 Oct 2015  
02:00PM
- Rocky Mtn. Stamp Show Committee  
27 Oct 2015  
07:30PM



Donations Catalog Publications Links Contact Us



## Events Calendar

October, 2015

By Year By Month By Week Today Jump to month

September						11 October 2015	
Sun	Mon	Tue	Wed	Thu	F	S	
27	28	29	30	1	2		
4	5	6	7	8	9		
				06:30pm Aurora Stamp Club	02:00pm Chereilyn Stamp Club	06:30pm Denver Postcard Club	

### MEMBERSHIP APPLICATION

MEMBERSHIP CATEGORY - CHECK ONE

NEW MEMBERSHIP	MEMBERSHIP RENEWAL	MEMBERSHIP UPGRADE
<input type="checkbox"/>	<input type="checkbox"/>	<input type="checkbox"/>

+ PLEASE PRINT ALL INFORMATION +++

**Contact Us**  
If you wish more information fill in this form. You will be contacted as soon as possible.  
Please fill in all required fields.

Your Name:

Your Email:

Phone Number:

How did you hear about us?

Describe your request:

By submitting this form, you accept our privacy policy.



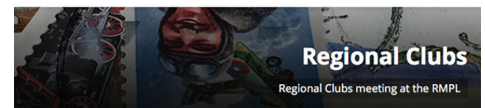
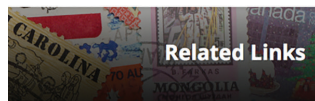
Search Keywords:

Search in: Title  Class

Authors  Responsibility

Description  All fields

Category:





# RMSS in 2016.....May 13-15.....It's Alive

By William Crabbs

Many have asked, will there be a Rocky Mountain Stamp Show in 2016? Because the World Stamp Show in New York is being held a few days after our traditional weekend in May, this is a reasonable question.

The answer is ... *Yes*, the Rocky Mountain Stamp Show will go on May 13 - 15 of 2016. We have had a continuous run for 66 years, and we do not plan on celebrating our 67<sup>th</sup> anniversary without having a show. We do not plan on being "dark" in 2016.

Our Dealer Coordinator, Ron Lampo, has indicated that many of our 2015 dealers want to return in 2016.

The *Society for Czechoslovak Philately* is planning on being in Denver for the show, and I'm sure we will see some quality Czechoslovakian philatelic material show up.

The theme of the 2016 show is "Ghosts of Colorado" and we do plan on bringing some ghosts out of the closet. In the 1970's, a pair of notable Colorado philatelists created *The Colorado Ghost Post* with local Ghost Post stamps. For 2016, we are resurrecting those same bits of yesteryear.



*The dealer booths promise to be buzzing again at the 2016 Rocky Mountain Stamp Show. Many of the dealers at the 2015 show have indicated by want to return in 2016.*

The Rocky Mountain Stamp Show committee rested after a very good 2015 show, but plans started brewing again in September, for a 2016 RMSS show. If you have something to offer, or would like to help make 2016 a stellar year, stop by our November meeting on the fourth Tuesday of the month.

---

## Local Level Exhibits Encouraged at RMSS, May 13-15, 2016

Jeff Modesitt has a priority between now and next May. He's visiting stamp clubs with his message, and collaring anyone he thinks may be interested. "We want to make exhibiting as fun and painless as possible," he says.

He explains that a major Rocky Mountain Stamp Show goal over the next few years is to stimulate exhibitor participation. In order to accomplish this, the RMSS has set up a new level of exhibitor participation.

Exhibiting used to be easier. A decade ago a new or relatively inexperienced exhibitor could get his/her feet wet by exhibiting locally. That is no longer true. Other than CHERPEX, there are no regional shows that even offer exhibits. *That means a new exhibitor must compete at a national level or not exhibit at all.* For many of us this is not an appealing prospect.

RMSS has introduced the Local Level Exhibit in order to provide a more comfortable transition into the world of exhibiting. It is limited to one frame, costs only \$5.00, and will be critiqued by qualified judge(s), separately from the World Series of Philately entries. These entries will be acknowledged in the show program and be given a written critique along with an opportunity to discuss their exhibits with a judge.

Jeff says, "Our goal is to get twenty-five of you to participate. We know you have the material and expertise; now you have the opportunity."

## A Touching Philatelic Find

by Dalene Thomas

Being an RMPL volunteer often exposes one to intriguing philatelic items. In a recent batch of foreign covers I was given to sort and price, I found two pieces sent by a US soldier from a German concentration camp. For some time I have collected mail sent from and to the American POW camp in Trinidad, Colorado, so these covers were of particular interest to me. Though they are called “postkarte”, they are actually on fairly thin paper.



Both messages were sent to the prisoner’s wife, Mrs. Willis T. Frank, in Jacksonville, Illinois. The first is dated February 12, 1945, and reads:

“Darling, am now at Stalag VII A at Moosburg just north of Munich. I’m OK honey and in good health although I don’t have much stuff with me. I missed the picture of Greg and guess I won’t get any mail or parcels for some time now. Take care of yourself my dear. I love you so much and don’t worry about me. I’m Ok. Willis”

The second card is dated March 12, 1945, and says:

“Dearest, everything is still going well with me. I am OK in all ways. I miss you very very much but expect that to be remedied soon. No mail from any of you since I left Sagen & I don’t expect any now. Take care of yourself my dear. I love you so much. Willis”

I was so intrigued by this soldier who was so concerned that his wife not worry about him, that I did some research.

Willis T. Frank was born in 1917, and came from Illinois. He was a Captain in the Army Air Corps Heavy Bombardment Unit. He was first imprisoned in July 1943 at Stalag 13-3 in Sagan, Bavaria, and was transferred to Stalag 13 -7A at Moosburg. Willis was liberated in June of 1945. I was not able to find out how he became a prisoner. Access to military records is limited.



Stalag VII A was Germany's largest prisoner-of-war camp during World War II. It was located just north of the town of Moosburg, in southern Bavaria. The camp covered 86 acres. It also served as a transit camp through which prisoners, including officers, were processed on their way to other camps. At the time the camp was liberated, there were about 80,000 prisoners being held there.



The surprise in all of this is that upon his death in 1996, Willis T. Frank was interred at Ft. Logan National Cemetery very close to where I live. Since we have family there and will be buried there ourselves, I decided to try to find his grave. All the national cemeteries have wonderful searchable data bases, so it turned out to be quite easy to find his marker.

When I stood at his plot I felt my quest to know this special soldier had finally come to a successful end.

## RMPL BOARD MEETING SUMMARY

Meeting of September 17, 2015  
Prepared by President John Sinski

The meeting was called to order at 7:00 p.m. All Board members present except Brian Kramer.

The May Board Minutes were distributed and approved.

### FOR THE RECORD:

Next Board meeting: Thursday, November 19.

### Financial Report:

August 31, 2015, Balance Sheet and the July / August Income / Expense Reports were reviewed and approved.

### Old Business:

RMPL Mortgage (for the building with addresses 2048 S. Pontiac Way and 7070 E. Asbury): The meeting with the mortgage holder showed differences in the perceived balance. The Board authorized Treasurer Blatherwick to pay off the mortgage once the exact amount is finalized, using his discretion of accounts used. This item is still open pending the action of the mortgage holder.

The Board approved a Memorandum of Agreement Between the American Topical

Association and RMPL concerning videos.

Webmaster / Website: The website is in test mode. [Ed. note: The site is up and running now. Story on p. 8]

### New Business:

Suggestions for information to be submitted to the Philatelic Literature Review was introduced by Ellengail Beuthel. Ron Mitchell will provide the submissions.

The Historical Atlas Books held at RMPL were discussed. This item will be coordinated between Steve Schweighofer and Ellengail.

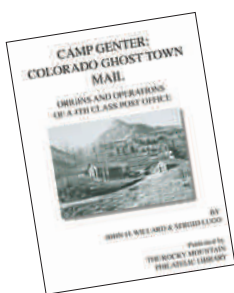
Acquiring more shelf space for books and periodicals is necessary. This is being accomplished by moving Slide Programs to the 7070 building and relocating the U.S. five-cent stamp files.

The RMPL Large-Lot Auction on October 24, 2015 will be one big session in our Meeting Room. We are getting early mail bids, exceeding \$5000.00.

New RMPL members were approved.

The meeting adjourned at 7:45 p.m.

## RMPL Publications available ...



### Camp Center: Colorado Ghost Town Mail

by John Willard &  
Sergio Lugo  
\$50 postpaid in the U.S.



### Danish Øre Bicolor Issues

by Peter Berg  
\$40 postpaid in the U.S.



### Mexico's Denver Printing of 1914

by Ron Mitchell  
\$50 postpaid in the U.S.

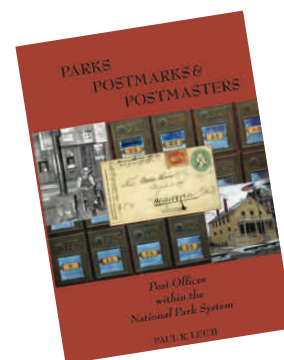
Our newest book

## Parks Postmarks & Postmasters by Paul R. Lee II

**Softbound** - \$29.99 plus \$3.50  
shipping & handling  
**Hardbound** - \$50.00 plus \$4.00  
shipping & handling  
Prices are for shipping in the U.S.

To order, please send  
a check or money order  
made out to RMPL and  
mail to:

RMPL  
2038 S. Pontiac Way  
Denver, CO 80224



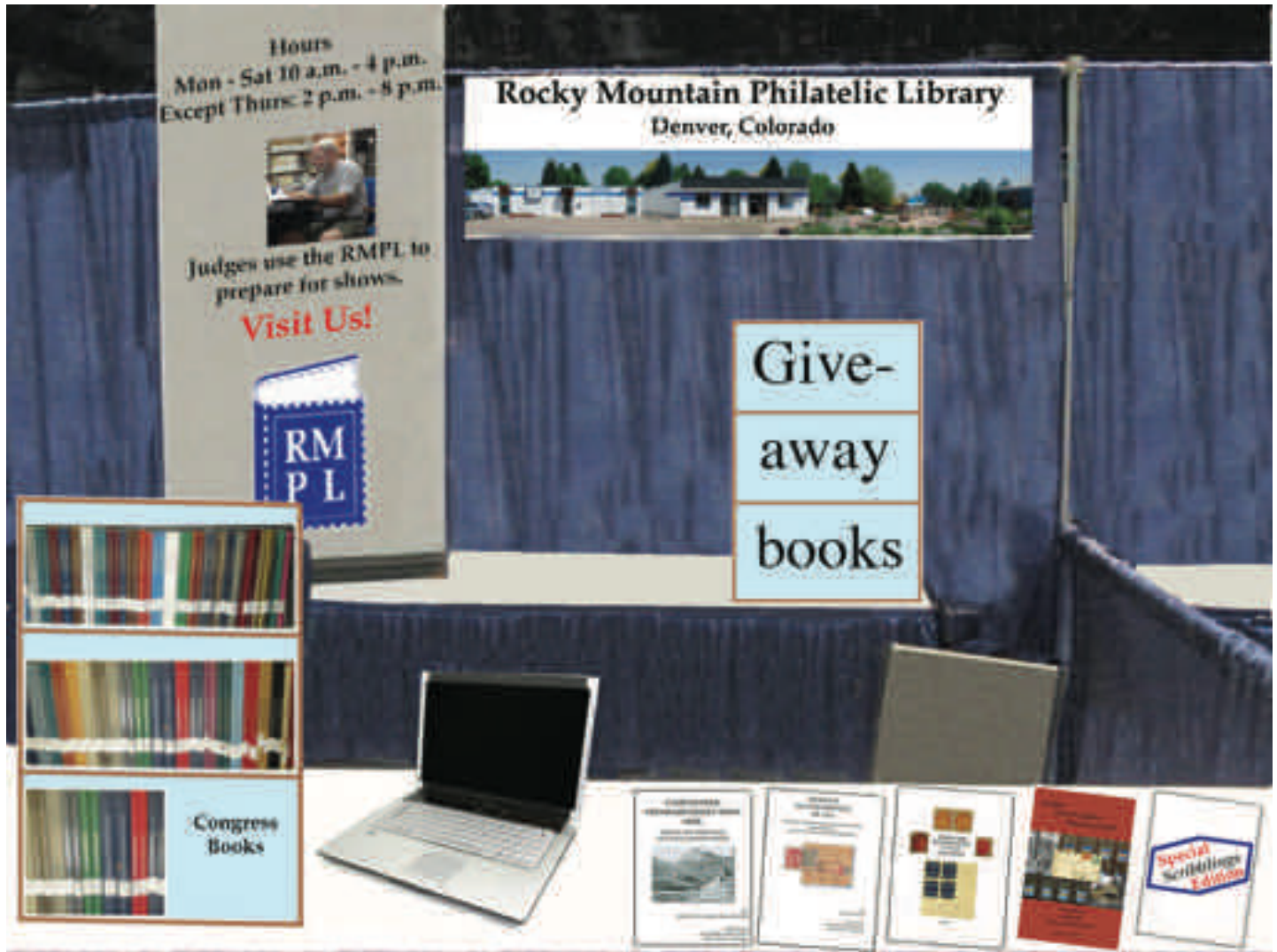
## Getting Ready for NY2016

by Ron Mitchell

Plans for RMPL participation at next year's World Stamp Show NY2016 are moving full steam ahead. The show will be held over eight days, May 28 - June 4 (Saturday to Saturday) and is expected to attract an attendance of 200,000 during the 64 hours it's open.

as a demonstration of our card catalog and the ability to look any article up just as if it were a book, by author, title, or subject.

We'll have books to give away. We'll have some of the the "better" third-copy books we have been given. Folks may enter our booth, sit



A mock-up of the booth the RMPL proposes to have at NY 2016. It is designed to draw passersby into a modest library experience.

Our job is to find a way to interact with some of those people, show them firsthand the advantages of a philatelic library (even if it is many miles from their homes), perhaps raise some money and add to our membership.

At the very least we will be putting the library forth as a great institution.

We'll be taking all the Congress Books to use

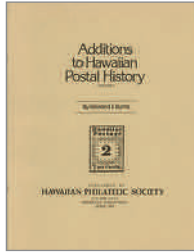
down, and look for books they would like to own. We'll have a lottery each day to give them away to those who have registered.

Much, much more is planned, including a special edition of *Scribblings* which will showcase all of the library's programs.

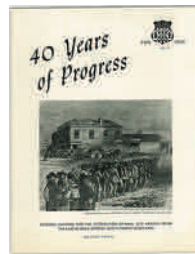
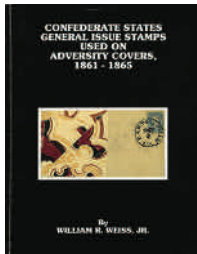
We hope to see you in New York next May!

## WHAT'S NEW ON THE SHELVES

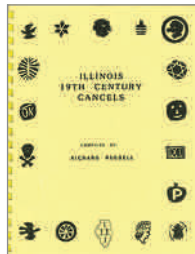
## UNITED STATES



*Additions to Hawaiian Postal History*, volumes I and II, by Edward J. Burns  
*Catalog of Plate Number Coils (1986)*, edited by Stephen G. Esrati



*Confederate States General Issue Stamps Used on Adversity Covers 1861-1865*, by William R. Weiss, Jr.  
*Confederate States of America: General Issues: Stamp Album*  
*40 Years of Progress* [Colorado chapter of the National Federation of Post Office Clerks, 1918-1958]  
*The Hole Truth: the Perforating of United States Postage Stamps*, by John M. Hotchner



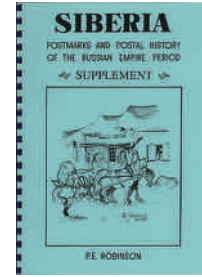
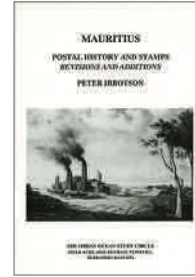
*Illinois 19th Century Cancels*, compiled by Richard Russell  
*The Noble Official Catalog of United States Bureau Precancels*, 60th Edition (1978)

## AFRICA



*Egypt [Catalogue of the] Royal Imperforate Printings*, by George L. Lee

## ASIA



*Mauritius: Postal History and Stamps: Revisions and Additions*, by Peter Ibbotson  
*Siberia: Postmarks and Postal History of the Russian Empire Period: Supplement*, by P.E. Robinson

## AUSTRALIA and OCEANIA

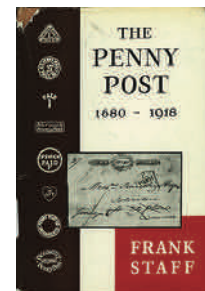
*Collecting New Zealand Stamps*, by Robin Gwynn

## EUROPE

*Bosnia-Herzegovina: A Study of the Postal History, Cancellations, Postal Stationery and Postal Rates*, by Oscar Pogrutz-Lippitt  
*French Colonies [and former colonies now independent] Revenues, parts I – V* bound separately, by G.M. Abrams and Henri Janton

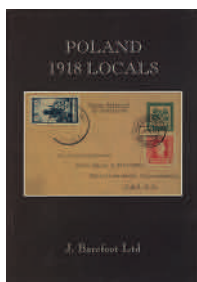


*Gene Kelly's Catalog of the Fiscal Stamps of the Kantone and Gemeinden of Switzerland, 1885-1991*, 4th Edition, by Gene Kelly  
*Germany: Tête-Bêches, Se-Tenants, Combinations, and Booklet Panes*, 5th Edition (1964), by David Dorfman  
*Magyar Bélyegek Árjegyzéke 1990* [Price List of the Hungarian Stamps 1990]



*Michel Privatpostmarken-Spezial 2005-2006: Band 1, Deutsche Privatpostmarken bis 1900*  
*The Penny Post 1680-1918*, by Frank Staff

What's New on the Shelves, Europe, cont.

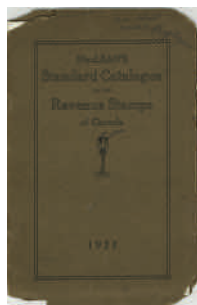


*Poland 1918 Locals*, by J. Barefoot  
*Poland Revenues*, by J. Barefoot



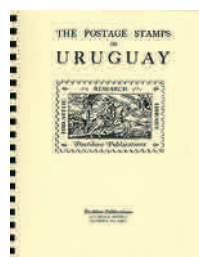
*Post Office Numbers: The Distinguishing numbers given to the Post Offices, 1844 to 1906 and the Stamps in Which They Were Used in the British Isles and in the Overseas Agencies of the British Post Office*, by George Brumell  
*The Queen Mother's Century Celebrated in Stamps*, by Peter Jennings and Tim Graham

**NORTH AMERICA**



*Maclean's Standard Catalogue of the Revenue Stamps of Canada* (1921)

**SOUTH AMERICA**



*O Imposto Do Selo No Brasil: Histórico, Legislação e Descrição dos Papéis Selados e Estampilhas Fiscais do Brasil, 1797-1999*, by Luiz Reginaldo Fleury Curado  
*The Postage Stamps of Uruguay*, by Emanuel J. Lee

**CINDERELLAS**



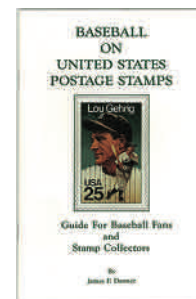
*The Paris Universal Exposition 1900: The Poster Stamps/Vignettes Catalogue 2000; and the 2001 Supplement*, by Charles Kiddle



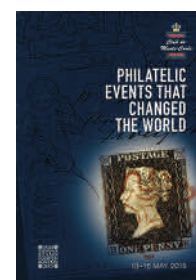
*Poster Stamps: German Aviation: Flugsport-Serie*, by Charles Kiddle  
*Poster Stamps: German Aviation: Balloons*, by Charles Kiddle

**TOPICAL**

*Baseball on United States Postage Stamps*, by James F. Danner  
*Judaica: Jewish Personalities*, by Dasa Metzler and Mark Vainer [a set of 25 volumes of Judaica on stamps]



**MISCELLANEOUS**



*Philatelic Events That Changed the World*, published by Club de Monte-Carlo

(Continued on page 16)

**AUCTION CATALOGS**

*The 2011 October Sale [in two parts]*, catalogs for an H.R. Harmer auction October 2011

*2015 Rarities of the World*, catalog for a Robert A. Siegel auction June 2015 [a small world; 98.9% of lots are U.S.]

*Auction Sale*, catalog for an R. Maresch & Son auction September 2013

*The Benjamin Franklin Bailar Collection: A Postal History Study of America's First Postmaster General*, catalog for a Robert A. Siegel auction June 2015

*The Brigham Collection of Canada: George V, Edward VII, George VI Issues, 1917-1953, Definitives and Commemoratives*, catalog for a Brigham Auctions sale June 2015

*The Brigham Collection of Canada: Part VI: Quebec Tercentenary 1908 & Macdonald-Cartier Centenary 1914, Queen Elizabeth II (1953-1995)*, catalog for a Brigham Auctions sale September 2015

*The Civil War and Confederate Stamps: featuring the Peter W.W. Powell Collection of Confederate Postmasters Provisionals*, catalog for a Robert A. Siegel auction June 2015

*Classic Romania: The "Moldau" Grand Prix International Collection (Part 3)*, catalog for a Corinphila auction February 2013

*The Collection (II) Greece: The Large Hermes Heads*, catalog for a David Feldman auction December 2004

*The Collection of Italian Airmail Covers Formed by the Late Peter H. Herdman of Bishop Auckland and other Airmail Properties*, catalog for a Phillips Son & Neale Auction March 1993

*Corinphila Briefmarken-Auktion: Österreich*, catalog for a Corinphila auction March 2010

*Corinphila Briefmarken-Auktion: Schweiz*, catalog for a Corinphila auction Oktober 2008

*Corinphila Jubiläums-Auktion: Schweiz*, catalog for a Corinphila auction Dezember 2007

*The Flagship Series: United States, British and Worldwide Stamps & Postal History*, catalog for a Daniel F. Kelleher auction January 2015

*Foreign Post in the Ottoman Empire: the "Oscar" Collection Part 2; French, Russian and British Offices; Turkey: "The First Issue" plus Duloz and Antolia*, catalogue for a David Feldman auction November 1999

*Gran Subasta de Macao*, catalog for a Galeria Filatèlica de Barcelona auction October 1993

*Gran Subasta de Portugal y Colonias*, catalog for a Galeria Filatèlica de Barcelona auction October 1993

*Greece: The Grand Prix Collection (I)*, catalog for a David Feldman auction May 2003

*The Larry Lyons Collection: All Roads Lead to San Francisco: The Private Companies that Carried the Mail in the Early West*, catalog for a Robert A. Siegel auction June 2013

*The Richard C. Frajola Collection of Classic Worldwide Covers, 1840-1860*, catalog for a Robert A. Siegel auction May 2015

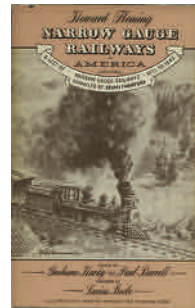
*Stamps of the People's Republic of China*, catalog for a Keller & Rogers auction September 2014

*Siam: the Carlos C. Swanson Collection*, catalog for a Galeria Filatèlica de Barcelona auction October 1992

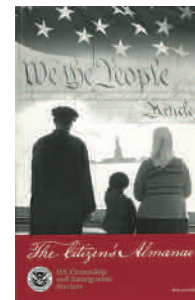
*United States, British Commonwealth, Foreign & Forgeries*, Catalog for a Harmers International auction June 2015

*United States Postal History*, catalog for a Richard C. Frajola auction October 1992

*The Wilson Born Collection of United States Telegraph Stamps*, catalog for a Robert A. Siegel auction June 2015

**NON-PHILATELIC (Railroads)**

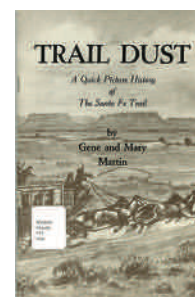
*Narrow Gauge Railways in America*, by Howard Fleming  
*Operations Santa Fe: Atchison Topeka & Santa Fe Railway System*, by Merle Armitage

**NON-PHILATELIC**

*The Citizen's Almanac: Fundamental Documents, Symbols, and Anthems of the United States*, published by the U.S. Citizenship and Immigration Services



*Souvenir Album of Denver, Colorado*



*Trail Dust: A Quick Picture History of the Santa Fe Trail*, by Gene and Mary Martin



## HELP WANTED

Here is an opportunity to become a part of the RMPL's core volunteer team. We need an additional Print Coordinator beginning the first of the year. The Print Coordinators help to guide members of eight societies as they print their journals.

This is a benefit to the hobby that the library provides, and accounts for about \$6,000 a year in income.

Training will be provided on the operation of the Xerox 252 color machine. It has been successfully used to print journals the last three years, and seldom requires attention beyond adding paper, changing the print cartridges and a very occasional paper jam.

This is one of the more important volunteer positions within the library, and we would love to sit down with you and explain the operation and answer questions. Contact John Sinski by phone at (303) 759-9921 or by email at:  
rmpl@qwestoffice.net.

The job may be a perfect fit for you to make a real contribution to the continuing success of the RMPL.

Note: We use the color Xerox to print eight journals, our own *Scribblings*, material for the Rocky Mountain Stamp Show, routine items for the library, auction catalogs and some miscellaneous personal items for members.



### Return books on time...

- Books are on loan for two weeks.
- If you call before the due date, you may renew for two more weeks
- Please print your name and telephone number legibly on the check-out card.



May 28-June 4, 2016  
Javits Center





## SECOND SATURDAY PROGRAMS AT THE LIBRARY

Second Saturday programs are sponsored by the RMPL and attract a friendly group of folks who are interested in a specific subject, or who are interested in learning more about an area of philately that may be new to them.

Contact Jim Kilbane if you would like to present a program. His email is <aurora\_80017@yahoo.com>.

**The programs begin at 9 a.m. and are over by 10 a.m.**  
**Doughnuts and coffee are complimentary and all are welcome.**

**November 14, 9 a.m.**

*Windmills on Stamps*  
 by Cliff Lushbaugh

A few windmills on stamps, from around the world ...



## Zeppelin Stamps



**December 12, 9 a.m.**

*Zeppelin Stamps, by Chuck James*

This program will feature Zeppelins on postage which were issued for Graf Zeppelin trips. Twenty countries produced 225 basic stamps and 11 of them have overprints.

Each stamp has its own story with lots of philatelic action. Almost every overprint created varieties, which makes collecting them a rewarding challenge. It is not readily apparent that some of the stamps were issued for Zeppelin trips, and these will be highlighted.

## RMPL Videos Online and on DVD



*Enjoy watching a video or two with kids or grandkids. You'll find the stories are sure conversation starters.*

It's time to release yet another new video, produced by Joe Lanotte. It is the 11th in the RMPL series.

Watch "Under the Big Top" by the American Topical Association.

- » Under the Big Top
- » By The American Topical Association
- » U.S./German Seapost
- » By Sergio Lugo
- » United States National Parks
- » By Paul Lee
- » The Lore and Legend of Dragons
- » As Told by Postage Stamps, by Lynne Toews
- » (You'll love the ending of this!)
- » A History of Scouting, by Frank Leitz
- » Scouting Activities, by Frank Leitz
- » The Security Elements of Postage Stamps,
- » Part 1, By Steve Dixon
- » Jewish National Fund: Labels with a Purpose
- » By Dasa Metzler
- » Tasmania, Part 1: Pictorial Stamps 1899-1900
- » By Ron Hill
- » Tasmania, Part 2: Pictorial Stamps 1901-1913
- » By Ron Hill
- » RMPL Youth Stamp Club
- » By Don Dhonau

A DVD with nine of the presentations is available at the library for \$5, or through the mail for \$7.



## New Circus Video



The circus comes to life through postage stamps, postal cards, photos and postal covers in the latest video the RMPL has helped produce.

This one was done with a huge assist from the American Topical Association and Roland Essig. It is hosted by Ed Lugo, with Jack Van Ens as the ringmaster.

Viewers will learn a great deal about the history of circuses and all the parts that come together under the big top.

It's available on the RMPL website, [rmpldenver.com](http://rmpldenver.com).



## DONATIONS

The library thrives on the enthusiasm and generosity of its members. The following members made donations to the library in August and September. We thank each and every one who has contributed.

Paul Albright	Mary Nystrom
James Banman	Thomas Pollard
Dorothy Bernay	Russell Powers
Bob Bratton	Amy Schmitt
Chloe Bratton	Kim R. Schroeder
Craig Buhlmen	Ira Sherman
Barbara Carter	Marc Silberman
McNichols Carter	George Snyder
Stephen A. Church	Estate
Roger Cichorz	Morgan Sonsthagen
Elisabeth Cook	Colin W. Spong,
JoAnne Curran	FRPSL
Patrick Dowling	Michael Stickney
Diane Drab	Bill Stolfus
Harold Eason	Mark Stucky
Zach Emmerich	Ludvik Svoboda
Nolan Flowers, Jr.	Julie Swarsen
Erling Fossum	Marcos Tafoya
Marvin Goodrow	United Postal
Leslie Gorsuch	Stationery Society
Tom Higel	Tonny Van Loij
Wes Huffman	Sandra Wainer
Jeanne Knudson	James Williams
Stanley J. Luft	Estate
Dasa Metzler	Marilyn Wilmoth
Fred Moore	Robert E. Wordell

## Get Ready to Pack Your Bags!



World Stamp Show NY2016 is about a half-year away and it promises to be a lifetime experience. Saturday, May 28 to Saturday June 4.

The RMPL will have a booth and we hope to see you there!

## NEW MEMBERS

The RMPL is pleased to welcome the following new members who recently joined the library.

- Max Folmer**, Denton, TX - Collects U.S., Austria, Germany, Danzig, Turkey, Iran (before 1980), Mozambique Company, Canada and Mexico
- Charlie Freise**, Aurora, CO - Collects general worldwide prior to 1950, U.S., Germany and Great Britain.
- Jerry Hager**, Fort Collins, CO - Collects French, Canada and U.S.
- Michael Haykin**, Centennial, CO - Collects Colonies
- Michael B. Hill**, Denver, CO - Collects U.S., Hungary, Romania and Egypt



Hours: Monday, Tuesday, Wednesday, Friday, Saturday 10 a.m. - 4 p.m.  
Thursday 2 - 8 p.m. Closed Sundays and Holidays. Phone: (303) 759-9921

Meeting times and places sometimes change. It is best to call the library or the club to confirm the place and time. A calendar of reserved club times is kept at the library by Howard Benson, Operations Manager. Clubs should check the calendar regularly and notify Howard at (303) 521-6216 of any changes or updates. All requests to reserve meeting time and space other than those listed here must be approved and scheduled by Howard well in advance for philately-related meetings.

## NOVEMBER 2015

- Nov 4** Wed- Meeting - Aurora Stamp Club  
6:30 p.m. trading, 7 p.m. meeting
- Nov 7** Sat - Meeting - 10 a.m.  
Scandinavian Collectors Club
- Nov 7** Sat - Meeting - 1 p.m.  
Topical Collectors in Colorado
- Nov 11** Wed  
Library closed  
Veterans Day
- Nov 11** Wed - Meeting - 7 p.m.  
Denver Germany Stamp Club
- Nov 12** Thu - 4 Club Auction - 2 p.m.  
Cherrellyn, Denver, Aurora and  
Arapahoe stamp clubs
- Nov 12** Thu - Meeting - 6:30 p.m.  
Denver Postcard Club
- Nov 13** Fri - Meeting - 7 p.m.  
Austria-Hungary Club
- Second Saturday at the RMPL**
- Nov 14** - Meeting - 9 a.m.  
Program by Cliff Lushbaugh  
*Windmills on Stamps*
- Nov 14** Sat - Meeting - 10 a.m.  
Mexico/Latin America Study Group
- Nov 15** Sun - Meeting - 2 p.m. - Great Britain  
and Commonwealth Collectors Club
- Nov 19** Thu - Meeting 7:00 p.m.  
**RMPL Board Meeting**  
All members are welcome.  
Please join us!
- Nov 21** Sat - Meeting - 9:30 a.m.  
RMPL Young Stamp Collectors Club
- Nov 21** Sat - Meeting - 9:30 a.m.  
Postmark Collector's Club
- Nov 21** Sat - Meeting - 1 p.m.  
Colorado Postal History Society
- Nov 24** Tue - Meeting - 7:30 p.m.  
Rocky Mtn. Stamp Show Committee

## NOVEMBER 2015, CONTINUED

**Nov 25** Wed - Meeting - Noon  
Denver Stamp Club

**Nov 26 - 29**  
Library closed  
Thanksgiving Weekend

## DECEMBER 2015

**Dec 2** Wed - Pot Luck dinner - Aurora Stamp Club  
6:30 p.m.

**Dec 6** Sun - Scandinavian Collectors Club  
Christmas Party - Member's home

**Dec 10** Thu - Meeting - 2 p.m.  
Cherrellyn Stamp Club

**Dec 10** Thu - Meeting - 6:30 p.m.  
Denver Postcard Club

**Dec 11** Fri - Meeting - 7 p.m.  
Austria-Hungary Club

### Second Saturday at the RMPL

**Dec 12**- Meeting - 9 a.m.  
Program by Chuck James  
*Zeppelin Stamps*

**Dec 12** Sat - Combined Club Meeting - 11:30 a.m.  
Mexico/Latin America Study Group and  
Rocky Mountain Aerophilatelists

Gift exchange and potluck lunch

**Dec 12** Sat - Dinner party - local café  
Denver Germany Stamp Club

**Dec 19** Sat - Meeting - 9:30 a.m.  
RMPL Young Stamp Collectors Club

**Dec 20** Sun - Meeting - 2 p.m. - Great Britain  
and Commonwealth Collectors Club

**Dec 23** Wed - Meeting - Noon  
Denver Stamp Club

**Dec 24 - 25**  
Library closed  
Christmas holiday

**Dec 31 - Jan 1**  
Library closed  
New Year's holiday