

Scribblings

...from the Rocky Mountain Philatelic Library



Ron Mitchell, Editor

Ellengail Beuthel, Librarian

Vol. 22 - No. 4
www.rmpldenver.org

2038 South Pontiac Way, Denver, CO 80224
303.759.9921

July-August 2014
Email - rmpl@qwestoffice.net

IN THIS ISSUE

Stamp Collecting and a Life at Sea.....	1
WYPEX 2014.....	4
RMSS Did It Again!.....	5
The Prez's Observations	8
RMPL Summer Picnic.	8
RMPL Videos on Line .	8
Periodical Pickin's TPO.....	9
SOSSI Visits the RMPL.....	10
Call for Nominations .	11
RMPL Board Meeting Summary	12
Fakes: It Happens Often, Just Keep Trying.....	13
An RMPL Visitor from Pennsylvania	14
What's New on the Shelves.....	15
One Auction was Amazing - Another is Around the Corner.	17



2nd Saturday Programs.....	18
New Members	19
Obituary.....	19
Donations	19
Donation Schedule...	19
Library Calendar.....	20

Edgewater, Colorado to the open sea...

Stamp Collecting and a Life at Sea

By Russell Morse

He grew up as the son of a grocer in Edgewater, Colorado. The morning sun greeted him as he looked across Sloans Lake, the lake that gave the little town its name on the west edge of metro Denver. His dad collected stamps, and involved his son in his hobby. Who knew the images in his young mind as he looked across the water?



The certificate from dad's 1939 exhibit.

The events of 1939 saw the father and son participate in the hobby that fascinated, even obsessed, the President of the United States, Franklin Roosevelt. The father even exhibited at the Denver stamp show with a first day cover collection. The lad watched and followed in his dad's footsteps, and when the War came, he went to sea in 1944 at the age of 18. He took the mutual love of stamps as a connection to his father and a shared love of the "far away places with strange sounding names."

The collection the father and son formed together passed to the sailor's sister after he died in 1971 at the age of 45. With her eventual death, the postal history adventure contained in the trove of letters nearly disappeared. The clues almost escaped the eyes of the estate appraiser, but the covers with the piles of panes of US stamps started to speak of the seven seas and ships after World War II. And there were letters!

The return addresses on these letters home seldom matched the country of mailing, but contained the name of his ship, such as SS Flying Cloud, and later another ship as they traced the route of a merchant seaman. And they continued for 20 years.

(continued on page 2)



The return address on this cover is probably a shipping company headquarters in New York, but it was mailed while the SS Negley D. Cochran was passing through the Panama Canal.

Here was the saga of how a sailor could stay in touch with his family as he traveled the globe. The slogan cancel THE PANAMA CANAL / SHORT ROUTE TO THE WORLD MARKETS really meant something when mailed from a ship that was passing through at the time.



United Seaman's Service envelope from La Havre, France, 1947. The enclosed letter says, "Dam [sic] I don't know what to say - except this place was really bombed and all that stuff."

Letters detailed the unloading of Ford trucks needed for the rebuilding of Europe after the war. Several of the mint stamps he sent home remained in the envelopes as he tried to add to his dad's collection. He asked that his father save copies of each new US stamp for him, thus the pile of sheet stamps still in the collection.



Mailed from Rijeka, formerly Fiume. The change came when Yugoslavia took over from Italy after WWII. It is now a part of Croatia.

To stay in touch as effectively as possible, the correspondence was by airmail. A schedule of the merchant ship's route was available ahead of its first departure, but the return address could work as well. A scarce printed schedule with notes allowed even better addresses.



A schedule allowed the father in Edgewater to follow his son's routes.



The seal of the United Seaman's Service tied with a Casablanca, Morocco, cancel December 20, 1959

United Seaman's Service was a federally chartered organization that provided resources in key ports similar to the USO for military personnel. Several covers with that corner card documented that important resource.

The ships he sailed on were the Liberty Ships built during the war that were sold to private firms afterwards.

Each ship had an original name through which it could be traced to the shipyard where it was built, as could any name changes. Unlike military vessels, few pictures



A snapshot of the merchant marine who sent the letters home to his family, enclosed in a cover mailed from Beyrouth, (now spelled "Beirut" in English), Lebanon. He was painting the side of his ship in the photo.



survive of the merchant fleets.

While each individual cover tells only a small part of the saga, the sum of about 150 such envelopes and letters was far more than a personal story.

The post-war economy and rebuilding depended on merchant shipping. Everything from cars to electronics now came by ship from overseas. Each ship was just over 400 feet long and was crewed by a staff of a captain, three officers, engineering men, a radioman, and about a dozen ordinary, or Able seamen. The officers were in charge of navigation and routes. The first officer supervised the crew, the second officer was in charge of navigation, and the third



Manuscript "Pusan Korea/Mutual Agreement" indicates this letter was turned over to non-postal authorities for mailing outside the war zone. The date in 1953 was one month before the armistice, or cease-fire, was signed. Pusan is now spelled "Busan" in English.

officer made sure the route was followed. The seamen kept the ship in order, stood watches, and, when docking, served to get the vessel anchored and tied up in port. Because the sea is harsh on metal, the ship had to be scraped and painted to keep rust away. Most of the Liberty Ships were scrapped after several decades of private service.

With such small crews, mail from merchant ships at sea seldom survives. It was helpful that we located Dr. Robert Ellis, a retired history teacher, who graduated from the Merchant Marine Academy during WW II, and served after the war. He helped us confirm that most of the records of mariners in the United States are kept and preserved by the U. S. Coast Guard. Because our young sailor served in World War II, Korea, and the Vietnam conflicts his records would require that the Coast Guard would document his service and issue discharges, just as if he were in the armed services.

As an Able seaman he would supervise some of the most dangerous elements of normal sailing, such as raising and lowering the anchor. If an anchor chain broke, the whipping of the chain could be fatal.

The story told by the surviving covers of this story started in 1947, with trips to Belgium, France, Sweden,



A 1955 cover from the Kobe seaport in Japan.

Denmark and Argentina.

After a break there were more letters during the Korean War, with covers from Curaçao and the Port of Rijeka, Yugoslavia. In the 1950's, he was aboard the SS Sea Gate from Germany to Korea. Then our seaman changed



A Philippines cover with a Raymond Magsaysay stamp (upper left) issued prior to his death in a plane crash in 1957.

(continued on page 4)

Stamp Collecting and a Life at Sea, cont.

ships and served on the SS Admiral Dewey, with a port in Formosa.

In the mid-1950's he made regular trips to Japan, Hong Kong, the Philippines and Singapore.

Then in 1956 he saw Mexico, and took cattle to Venezuela before sailing to South-West Africa (now Namibia) and Mozambique. In September he wrote home from Tahiti, but the letter was lost.



A cover from Mozambique mailed home in 1957.

Mail from 1957 started in Germany, Netherlands, and Belgium before another trip to South Africa, Mozambique and Kenya. By the fall, it was a stop at Casablanca on the way to Pakistan, India and Singapore.

Subsequent years saw stops in Lebanon, Pakistan, Singapore, Vietnam, and Japan.

1959 started in Casablanca, Morocco, Greece, England, and Turkey before another stop at Rijeka and Trieste. The year ended with a trip on the north and west coasts of South America with stops in Peru, Chile, and Columbia. It ended in Casablanca, again.

The number of letters home dwindled, but the final cover in 1966 was from Saigon, Vietnam.



A 1959 cover from the port of Callas, Peru.



The latest cover in the saved correspondence was sent from Saigon, Vietnam, in 1966..

The life at sea took its toll on family and he remarried in 1967. Retirement from sea life came in 1969. He had settled in New Orleans where he died in 1971.

Apart from two daughters and a grandson, what survives is a glimpse into how a sailor could stay in touch with his family in spite of long years at sea.

SHOW NEWS



WYPEX 2014

August 9 and 10
9:30 to 5 Saturday
9:30 to 4 Sunday
Holiday Inn

204 W. Fox Farm Road, Cheyenne (SW corner
of I-80 and South Greeley Hwy.).

OUR 22ND ANNUAL SHOW!

- o Stamp dealers with US and worldwide material. Booths still available. Contact show chairman Robin Wilderness at (307) 630-1604.
- o Exhibits by Cheyenne Philatelic Society members
- o Two show cachets. One for the 125th anniversary of the Salvation Army in Cheyenne and the other for the 100th anniversary of the beginning of WWI. Cachets are \$2.50 each at the show or from the Cheyenne Philatelic Society, PO Box 21201, Cheyenne, 82003-7204

The RMPL salutes our members in Wyoming. Several of them work to make WYPEX a success year after year: Dennis Bland, James Debros, Jeannie Hicks, Duane Tozier, Robin Wilderness, Eric Rasmussen, and Bill Arnold.

A great show for the 65th time...

RMSS Did It Again!

By William Crabbs

On Thursday May 15th, Don Dhonau and I arrived at the Crowne Plaza Hotel / DIA to set up two tables for the 65th Annual Rocky Mountain Stamp Show. We unpacked the car and carried all of the material in we would need for three days at the show: my material for the "What's in your Attic" table, Don's for the Youth Booth.

VOLUNTEERS GO TO WORK

Tonny van Loij, Rich Palestro, Steve McGill and others had arrived earlier to set up more than 200 exhibit frames. The frames were unpacked the day before, cleaned, and checked for damage. With the help of others, Tonny laid out the floor according to the amount of frames needed. The design made it easier for volunteers to get the rows of exhibit frames straight. Crates for the frames were pushed into the corner and covered by drapes.

Hotel staff set up the tables and curtains, then volunteers Rich Palestro and Steve McGill hung all of the stamp dealer identity signs over the tables.

Once the frames were up, exhibit pages were mounted. Sherri Soraci Jennings directed the volunteers to work with specific frames and displays. Some exhibitors put up their own displays, and a volunteer was always handy to help hold the door of the frame as the pages were put in place. Once mounted, a couple of screws were installed in the frames to hold the fronts down, then a volunteer returned and put additional screws into the frames to make the display cases secure.

DEALER SETUP

The dealers arrived and started unloading by 1 p.m., some with the help of RMSS volunteers. For a nominal fee some dealers had their material unloaded from their vans and carried by a two-wheel cart to their table. Assistance setting up their booths was available, too.

This year we had 39 dealers with material for collectors to peruse and add to their collections.

PLACES, EVERYONE

Friday, Don Dhonau and I arrived early to put the final touches on our tables.

Ron Lampo was busy on the floor making sure everything was ready.

Bob Miller and Mike Milam were the men at the front doors ready to offer suggestions and point out various visitor destinations.

Rusty Morse was behind the table just inside the door ready to dispense show covers.

Other volunteers were out front taking admission fees, accepting coupons and handing out many types of information to all in attendance, including the show program.

Back at the RMPL table, volunteers were ready to hand out auction books for the silent auction, so collectors could search for items from the more than 700 great lots offered.



Photos by Van Jennings

Nearly 40 dealers provided collectors an opportunity to add some treasures to their albums.

(continued on page 6)

THE SHOW IS READY

The loud speaker came to life with the announcement "The Rocky Mountain Stamp Show is now open!" Steve McGill cut the string of coil stamps and the crowd rushed in. That crowd and others who came Friday made for a great day.



[Ed. Note: Show Chairman McGill says the size of the crowd was a direct result of William Crabbs' work on advertising.]

Saturday's show opened at 10 a.m., and again, last minute preparations were made. More volunteers were taking admissions and accepting coupons for the day's attendance.

The exhibits were judged all day Friday and final judging took place before the show and an hour or so after Saturday morning's opening. The results were forwarded to John Bloor who then assembled the list of winners for the Saturday night banquet and the show's Internet site.

Ribbons and special awards were

put on the displays later Saturday afternoon and exhibitors had their first chance to see how their work fared in the competition.

Society seminars, meetings and presentations were held all days of the show. There was a sign by the front door listing all events and times.

Saturday was another busy day for all involved, with good business for the dealers, and lots of work for the volunteers.

RMSS Chairman Steve McGill cut the traditional coil of stamps, which lead to the announcement, "The Rocky Mountain Stamp Show is now open!"

A FINE MEAL, GOOD CONVERSATION

The bar opened at 6 p.m. in the banquet area. There was time to make new friends, meet old acquaintances, and talk to the judges while waiting until the buffet dinner was served at 7 p.m. The food was wonderful with enough to go around.

Exhibit winners were announced after dinner by John Bloor, Dalene Thomas and Pat Walker, the chair of the judge's jury.

As awards were given out, Steve McGill also gave door prizes of unopened packets of the Inverted Jenny sheetlet. This gave the recipients the opportunity to have a chance of winning a "right side up" pane. It was a wonderful



Youngsters were able to enjoy all three days at the show at their own stamp tables with plenty of activities to keep them interested.

opportunity! And so it went through the evening ... another successful RMSS banquet.



The youth table has become a tradition at the RMSS.

SUNDAY, SLOW SUNDAY

The opening at 10 a.m. provided the usual rush, then visitor traffic slowed. A second rush kept everyone busy until around 2 p.m. as things began to wind down.

Young adults and Boy Scouts at the youth table had a visit from an Eagle Scout who talked about how Scouting had influenced his life and helped with later lifetime accomplishments.

The "What's in your Attic" table saw 15 to 20 collections pass across the table. People who did not know what to do with their stamp collections were given information about the various options open to them.

The Rocky Mountain Philatelic Library had a successful, record-breaking, auction. Many collectors were able to

outbid others for treasures for their albums.

As for the dealers, Ron Lampo told me most of them had a good show and planned on returning next year.

GOODBYE, UNTIL 2015

At 3 o'clock the 65th Annual Rocky Mountain Stamp Show closed. As dealers packed up, help arrived to assist them in removing their material to their vans, trucks or cars.

Exhibitors anxious to leave waited in line for Sherri Soraci Jennings to assign helpers to take displays from frames, and one-by-one they came down, ready to be shown another day.

The youth table folks packed up as three days of sharing stamps and activities with young people was at an end.

More volunteers arrived to help remove exhibits, tear down the frames, remove signs above dealer's tables, pack up the front table, disassemble easels, and pack, pack, pack.

THE RMSS WANTS YOU

Preparations for the Rocky Mountain Stamp Show start in September of each year, and the committee meets six to seven times before the next show.

All of our volunteers names are not mentioned here, but without them a show of this size would be impossible to accomplish.

If you have some time on your hands and would like to give back a bit to the stamp collecting community, the Rocky Mountain Stamp Show could use your help. Some positions need only a couple of hours each day during the show. If you are creative, handy or have a special talent from years past, send Steve McGill an email at GBCC1Colorado@gmail.com. He'll be glad to talk to you about the positions available, and one of them might have your name on it!



THE PREZ'S OBSERVATIONS

Did you know that the Rocky Mountain Stamp Show auction began 20 years ago, as a fill-in activity for ROMPEX? The show had some local dealers conducting auctions in prior years, but all of a sudden, there were none.

Lo and behold, there was a "back-up" of sorts, namely the RMPL, which had *never* undertaken an auction. With steely determination, and a desperate need to raise funds to pay the mortgage, that first auction was undertaken by library members Joe Weinman, Bill and Sue Dunn, Don and Ellengail Beuthel, and Jim Kilbane. The goal was to raise enough money to pay one month of the RMPL's mortgage, roughly \$1,200.

Let's also be clear that another goal of the auction was to make it as attractive and affordable as possible for library members, so they had the opportunity to compete for reasonably priced materials and also generate income for the library. All auction managers have tried to keep that goal foremost as an objective - namely giving folks another reason to become and stay RMPL members.

Both goals have been admirably achieved, as one auction manager after another stepped in to help: Joe Weinman, followed by Bill Dunn, followed by Norm Camara, followed by Norm Camara/Sergio Lugo, and followed by Sergio Lugo/David Weisberg. Most recently, David has stepped forward to manage and guide the auction - committing easily 300 to 400 hours each spring to the activity, with Sergio devoting easily another 200 hours throughout the year to collecting and dispersing donated material and in post-auction accounting. Added to these hourly commitments are the hours devoted to staffing the front desk for pre-auction viewing, to staffing the RMPL table at the stamp show, tallying results, managing closure of the auction, and mailing the winning bids. Oh, and by the way, did I tell you about the roughly 40 hours committed by editor Ron Mitchell in getting out the auction catalog every spring?

So here we are 20 years later with a boot-strap auction that has admirably achieved its two primary goals in unimaginable ways, and has become a primary fund raiser for the library, allowing us to do much more than pay one month's worth of the mortgage. Details are in an article on page 17. For now, suffice to say, "Thank you," first to those who have continued to provide the material donations that provide the underpinnings of the auction and, second, for the support all of you have contributed to what is now an unrivalled auction among all the philatelic libraries and stamp clubs of the nation.

Sergio

Summer Picnic on Aug. 23rd

By Dalene Thomas



Jack VanEns prepares to sample one of about a dozen cakes entered in last year's bake-off at the popular RMPL summer picnic.

It is time again for the RMPL annual summer picnic. The potluck picnic will be held at the library on August 23rd beginning at 5:30 p.m.. RMPL will provide the hamburgers, hot dogs, drinks, and paper items.

Attendees are asked to bring an appetizer, salad, or dessert.

Since the cake bake-off was such a success, it will be held again this year. All cakes will be entered into a competition with the winner receiving the prestigious "wooden spoon trophy."

Be sure you don't miss this fun time with good food and friendly people in our beautiful gardens!

RMPL Videos on Line

- The Lore and Legend of Dragons
as Told by Postage Stamps, by Lynne Toews
- A History of Scouting, by Frank Leitz
- Scouting Activities, by Frank Leitz
- The Security Elements of Postage Stamps,
Part 1, By Steve Dixon
- Jewish National Fund: Labels with a Purpose
By Dasa Metzler
- Tasmania, Part 1: Pictorial Stamps 1899-1900
By Ron Hill
- Tasmania, Part 2: Pictorial Stamps 1901-1913
By Ron Hill
- RMPL Youth Stamp Club
By Don Dhonau
- U.S./German Seapost
By Sergio Lugo

To view, go to our web page at www.rmpldenver.org and click on "Videos" in the menu on the left. You're in for a treat!



Return books on time...

- Books are on loan for two weeks.
- If you call before the due date, you may renew for two more weeks
- Please print your name and telephone number legibly on the check-out card.

PERIODICAL PICKIN'S

TPO

Journal of the TPO & Seapost Society

By Sergio Lugo

In this issue, I get to review with you an absolutely delightful, and thoroughly informative, journal that has just come to our attention. It is a Short Run journal in our stacks but I hope it will become a very extensive one, as more additions are made to our holdings.

The journal of which I speak is TPO, the journal of the TPO and Seapost Society. As you might surmise, the TPO designation indicates a journal of British origin, and in this regard you're not off the mark.

TPO is the British designation for railway Travelling Post Offices, in contrast to the American usage of RPO for Railway Post Office.

The journal is in its 67th year of publication, but at this point, the RMPL only has a couple of issues from 1971 and complete volumes from 2012 and 2013. TPO had its beginnings in 1947, and the Society dates back to 1938.

The later journals we have are beautifully illustrated, with an abundance of color illustrations and black and white renditions of cancels, covers, post cards and the like.

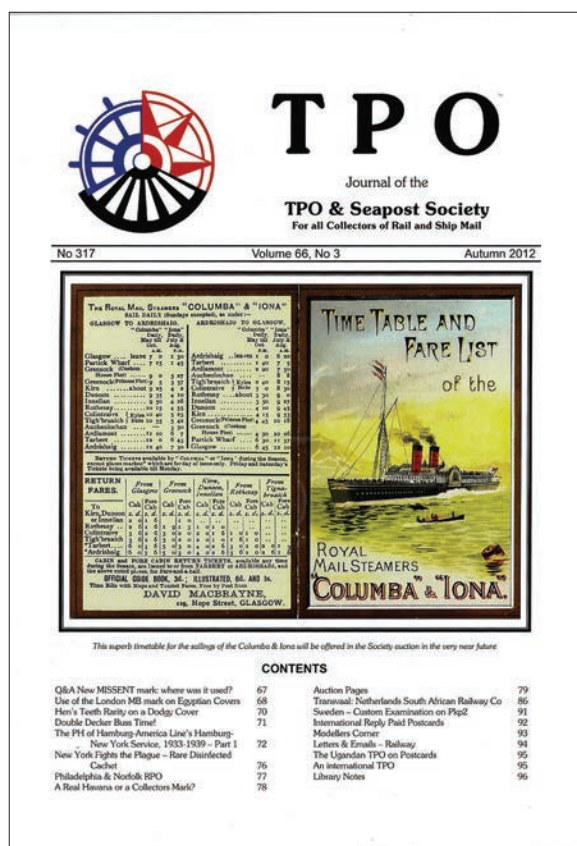
The editors alternate their front and back section features. Specifically, TPO/RPO articles may appear at the front of the journal in the first issue of the year, then are in the rear section of the second issue. Seapost articles follow the same sequence, with each topical area alternating issue after issue, year after year. In between the two sections is a large section of TPO and Seapost auction items.

The article that grabbed my attention was one devoted to U.S./German Seapost cancellations.

It is an interesting topic that helped shed light on the travels and itineraries of a specialty-collecting interest of mine. [Ed. note: The library has a special collection of U.S./German seapost cancellations in our holdings, and a video accessible from our website.]

In reviewing the articles, I wasn't sure what was failing to grab my attention, but something wasn't being absorbed. I'm afraid that British English and its many nuances in grammatical usage were failing to register with me, and so I tended to focus in on small snippets of

narrative and the captions of old covers, postcards and markings, which were thoroughly informative. Many of the articles were characterized by oversized photos and postcards, an editorial trick to "fatten up" an otherwise lean narrative journal. The journals are devoid of paid/commercial advertising.



An issue from Autumn, 2012, Volume 66, Number 3, Whole No. 371.

Despite some difficulty following the narrative, I was very pleased to see the length and breadth of seapost articles. Those dealt with maritime mail from throughout the world, a pleasant addition to discussing the maritime traditions of Great Britain. Likewise, with regard to TPO's – Great Britain's long tradition of railroads and mail carriage did not dominate to the exclusion of railway mail articles from throughout the world.

For those of you interested in learning more about this society and its offerings, I'd suggest you go to their website at www.tpo-seapost.org.uk. Many of you will be pleasantly surprised by the world of railway and seapost mail service that will unfold before your very eyes.

Society of Scouts on Stamps International (SOSSI) Visits the RMPL

Friday, May 16th was “a night to remember;” not for anything tragic, as in the RMS Titanic book, but because of the opportunity for the RMPL to shine before a number of visitors. On that afternoon and evening, roughly 25-30 members and spouses of SOSSI joined 15 members of the RMPL for an evening devoted to Scouting.

SOSSI members visited all parts of the library and its gardens and searched through the stacks and holdings of the RMPL in the Scouting arena, as well as in other topics.

It was an eye-opening experience for the visitors because of the breadth and scope of the library’s resources.

They also reviewed the massive special collection of *Scout and Guide Stamps and Covers* compiled by Frank Leitz, with significant contributions by Richard Coan, Frank Leitz, and the late Edmond Holroyd’s son and widow.

[Ed. Note: *The Girl Scouts are known as Girl Guides in some parts of the world.*]

The group saw two videos on Scouting developed by RMPL volunteers, and enjoyed themselves at a banquet, where a number of guests were honored by SOSSI and the library.

The RMPL used the occasion to recognize several members who have contributed heavily to Scouting related activities, including: Frank Leitz, Don Dhonau, Richard Coan, Dr. Joan Grady, and Edmond Holroyd’s son, also named Edmond.

As always at such events, a bag of goodies was provided to all in attendance, with numerous visitors seeking out the special paper mementos created by Dick Seeley featuring Scouting stamps.

A unique feature of the evening was a Skype internet hook-up to Ruth Holroyd in St. Louis, who had the joy of

reconnecting with a SOSSI member from the 1970s who used to visit with her and her husband Edmond in Toronto and New York.



The award presented to Edmond Holroyd’s son for his donation of his father’s Scouts on Stamps collection to the RMPL.



Holroyd’s son and widow also donated material from the British postal strike in 1971 which Sergio Lugo organized into four volumes for the library’s Special Collections holdings.



Frank Leitz, standing, left, was honored for his donation of his Scouts on Stamps collection to the library, and for the hundreds of hours spent assembling more than 50 albums of Scouting and Girl Guide material for RMPL’s Special Collections holdings.

Denver Summer Postcard & Paper Show



Antique &
Collectible
Postcard & Paper
Show & Sale

Jefferson County Fairgrounds Exhibit Hall
(15200 W 6th Ave., Golden, CO)

Fri., July 18 11:30 a.m. - 7:30 p.m.

Sat., July 19 9:30 a.m. - 5 p.m.

\$5.00 Admission (Children 12 and under free)

Food available on site • Door prizes daily • Free parking

Contact Dede Horan at (303) 667-6212

Call for Nominations

By Brian Kramer

RMPL Nominating Committee Chairman

The Nominating Committee extends its sincere thanks to those of you who have served as officers and board members during the past three years. Along with the officers and board members, we also want to extend our thanks and appreciation to all RMPL members who have volunteered their time and resources to help make the library the organization it is today.

January 31, 2015 marks the end of the term of office for the current RMPL officers and board of directors. It is now time for elections.

The offices and positions open for nomination are: President, Director of Operations, Vice-President, Recording Secretary, Corresponding Secretary, Treasurer and four at-large board positions. Nominations are due by August 31, 2014. Election ballots will be included with the mailing of the January - February 2015 issue of Scribblings with ballots due by January 31, 2015.

Any member, in good standing is eligible to hold office, serve as a board member, or nominate members to the above positions. It should be noted that it is acceptable to self-nominate should you desire to run for office.

Should you have questions about the elections or duties of the positions, please contact any of the Nominating Committee members. The members are: Brian Kramer, Chairman (brian_c_kramer@comcast.net), Paul Albright (palbright@wiche.edu) and Bill Douglass (billdouglass@q.com).

Enclosed with this issue of Scribblings is a "Call for Nominations" along with a return mailing envelope. We hope you will use it to help in our quest for a slate of officers for the coming term. Nomination forms should be mailed to the Rocky Mountain Philatelic Library, Attn: Nominating Committee, 2038 S Pontiac Way, Denver, CO 80224, or placed in the nomination box at the library. Again, these completed nomination forms are due by August 31, 2014.

RMPL By-Laws relating to duties of officers (as revised, December 16, 2010).

***Article V, Section 1:** The President is the Chief Executive Officer of the RMPL and shall be responsible for conducting meetings of the Board. At meetings of the Board, the President may request a report from each member present on current matters within their respective areas of responsibility and provide an opportunity for Board discussion and*

Board action as necessary. The Board is responsible for the making of general policy for the RMPL.

***Article V, Section 2:** The President shall carry out all programs approved by the Board, supervise and control the day-to-day operations of the RMPL, implement approved budget programs and expenditures, and maintain liaison with the members of the RMPL and with other philatelic organizations on behalf of the RMPL. The President is authorized to spend up to \$1,000 without Board approval.*

***Article V, Section 4:** In the absence of the President or in the event of the President's inability to act, the Vice-President shall perform the duties and be subject to all the restrictions of the President. The Vice-President shall perform such other duties as from time to time may be assigned by the President.*

***Article V, Section 5:** The Director of Operations shall oversee general daily operations, schedule volunteers, and receive and process incoming mail, dues, and donations.*

"We hope you will help in our quest for a slate of officers for the coming term."

***Article V, Section 6:** The Recording Secretary shall record the minutes of the Board at any of its meetings.*

***Article V, Section 7:** The Corresponding Secretary shall respond to official correspondence and send letters of acknowledgement for donations.*

***Article V, Section 8:** The Treasurer shall receive and disburse all monies of the RMPL and shall have custody of all securities belonging to the RMPL. The Treasurer must secure approval of the Board for the issuance of any check in the amount of \$5,000 or more. No monies other than current expenses shall be expended, except by order of the Board. The Treasurer shall make or cause to be made a detailed financial statement to the Board, which shall be subject to an audit by a committee appointed for this purpose or by a recognized public accountant.*

RMPL BOARD SUMMARY

Meeting of April 17, 2014

All Board members were in attendance, except Roe Emery and David Weisberg, both of whom were out of town.

Minutes of the January 16, 2014 meeting were reviewed and approved with three corrections/additions made.

The financial report was reviewed and approved, with two additions or revisions made.

Old Business

- Arrangements for the Rocky Mountain Stamp Show, were discussed, including the RMPL auction, tours of the library, and the visit of Scouts on Stamps Society, International.
- Two new videos are anticipated to be on line by the end of April – both parts focus on Scouts on Stamps.
- The library is hoping to publish two additional books by the end of the year. Funds were budgeted for them in 2012 and 2013: *National Parks, Postmasters and Post Offices* by Paul Lee, and *Colorado Railroad Post Offices* by Michael Maselli.

New Business

- Discussion continued of the RMSS old business item centering on library tours and transporting visitors to the library. We settled on two tours, one on Friday and one on Saturday.
- Mention was made of the RMPL auction, and how David and Sergio were anticipating realizations in the \$25,000 to \$27,000 range. David is uncertain about these realizations in light of the very strong Canada and mid-range American classics.
- A \$1,000 donation was received from the Scandinavian Collector's Club

The RMPL summer picnic will feature brats, hamburgers, franks, and liquid refreshments supplied by the library. Members are encouraged to bring pot-luck entrées, and a cake/dessert. A bake-off will be held again for the benefit of diners who love the variety that accompanies bake-offs. The picnic will begin at 5:30 p.m. Saturday, August 23rd. *[Editor's note: For more information, see the article by Dalene Thomas on page 8.]*

- President Lugo informed the board of two technology related matters.
 - » First, Travis Searls says his work schedule is interfering with his ability to continue as our webmaster. He urges the RMPL to begin finding someone to replace him. Travis will be asked to supply us with the details of programming languages that will be needed. The main problem area is the on-line catalog, since Travis programmed it himself. The Board was urged to consider introducing a budget line in the budget by

December to accommodate the pay needs of such a webmaster – which may be high. David Weisberg offered to subsidize such a position, but that may not be necessary.

- » Second, Roger Rydberg, chairman of our technology committee, is concerned by the possibility of the imminent withdrawal of support by Microsoft of older programs that the library uses, as well as the antiquated state of some of the RMPL's equipment. President Lugo has suggested that a round number of \$7,000 be set aside for future purposes; Roger suggested that the purchase price may be several thousand dollars less.
- The major discussion item of the evening was participation at the New York 2016 Show. It was projected by President Lugo that full participation by the RMPL for the length of the show and two volunteers would amount to between \$5,000 and \$8,000. In light of the cool reception to participation in a super booth with other libraries, the board voted against participation in the show, contingent on further feedback from the other nine philatelic libraries in the country. More will be reported on this matter in the next Scribblings.
- The updated listings of the library's special collections, maintained by curators John Peters and Russell Powers, was noted. The special collections will soon be augmented by the addition of *Scout and Guide Stamps & Covers*. It has been suggested that *Scribblings* and the web page contain information on the special collections in the form of brief articles. The matter will be taken up with the curators.

The meeting adjourned at 8:45 p.m.

The next Board meeting is scheduled for Thursday, July 17, 2014.

Sergio Lugo
RMPL President



Digital copies of all Scribblings issues since January 2008 are available on the RMPL web page, www.rmpldenver.org.

FAKES

By Joe Lambert

It Happens Often ... Just Keep Trying

Some years ago, I donated a number of fake items (with certificates) to the Rocky Mountain Philatelic Library to be kept for reference, never to be put back into public hands. Hopefully many people have looked at them, enjoyed them, and even learned from them.

As the attached picture suggests by its stack of "bad" certificates, they keep coming. The stamps shown are only a few of the many I have which either have certificates as fakes or which, if submitted, would likely get those FAKE acknowledgements, or notice of some fault.

Philatelists who are far more accomplished than I find some of their submissions coming back as FAKE. One hopes that with experience comes a higher percentage of success with submissions, but 100 % is not frequently found. Everyone makes mistakes and misjudgments.



A group of some of the fakes the author has accumulated recently.

The point of this is: don't be afraid to submit things for expertization which should be expertised, and don't be surprised, upset, or embarrassed when some of your submissions come back reflecting something you had not expected. Remember also that certificates reflect only an opinion, the opinion of one or more experts, and they are sometimes wrong. It is probably not a winning bet to assume that they are wrong, but it is a possibility.

Send off the things which need certificates!

An RMPL Visitor from Pennsylvania

By Scott R. Mix
APS 191548

I spent a delightful afternoon at the RMPL a few months ago doing research for my collection of worldwide 1959 issues. This was my second visit, my first visit being about 5 years ago.

I'm particularly interested in researching in country-specific specialized catalogs to get non-traditional varieties from 1959 that aren't listed in Scott, Gibbons, Michel or Yvert & Tellier.

During my first visit, my research method wasn't very organized – I spent most of that afternoon browsing through the shelves, looking at whatever was interesting, or jumped out as a potential source of information.

I live in Pennsylvania, and spend a lot of time in the APRL at the Match Factory site in Bellefont, PA, and have made extensive use of their holdings, and their online Philatelic Union Catalog website to organize my research.

When I found out I was going on a business trip, and knew that the RMPL holdings were also included in the online Union Catalog, I began to organize my research task based on holdings that the RMPL has, but APRL doesn't.

My basic process is to do searches of the online Union Catalog for holdings with the term "catalog" (along with various spellings, such as "catalogue," and "katalog") contained somewhere in them, with a publishing date of 1960 or after. This is relatively straightforward within one library, since there tends to be a degree of consistency among the entries from a given library, either by holding name or library catalog number.

Since I knew I was coming to the RMPL and had a relatively limited amount of time I could spend in the library. I didn't want to repeat any research I had already done, or could perform at the APRL during one of my many visits there.

I performed the same search on RMPL holdings in the online Union Catalog, and then hand-correlated and eliminated any holdings that obviously overlapped with the APRL.

Anything that appeared in the RMPL, but not in the APRL, became a target. I ended up with about 50 holdings that did not appear to overlap, and out of those 50, 15-20 yielded research results; all-in-all a good return.

I had a couple of minor stumbling blocks, but

nothing significant. The two libraries use different catalog systems: APRL uses the Library of Congress, while RMPL uses Dewey; so I couldn't use the catalog number as exclusion filtering.

Both libraries use slightly different formats for entering the title / author / publisher information, so a certain amount of thought and inference needed to go into determining if the holdings were the same or different.

Similarly, both libraries used slightly different approaches for entering non-English information, i.e., whether the title was entered in original language, translated to English, or both. I suppose that some of the differences could be due to either the staff (or volunteer) that entered the data, or a change over time in the philosophy on how to enter the data.

The good news was that I had all the raw information I needed to do all this analysis in the comfort of my home, and did not have to spend any of my precious "library time" to determine if a particular holding was duplicated.

Best of all, by organizing my research targets, I was able to complete all of the research I planned to do, and had almost an hour left over to look at and purchase some stamps to fill some holes in my collection. I also picked up a couple of reference books from the sales area.

Editor's Note: We appreciate Scott Mix's report on his day at the RMPL. It was fun to learn how someone from out-of-town can use the library. He has some good ideas!

AN INVITATION TO WRITE

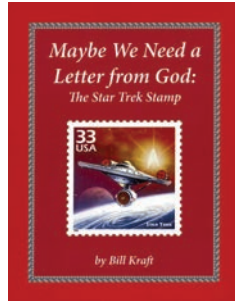
Scribblings is proud to present an article written by a member about his/her philatelic specialization in each issue. We invite you to share your knowledge in this way. The editor will offer help, and the library has printed a writer's guide which is free of charge. It is preferable that research found in the RMPL be included. More than 50 articles have been published to date. Please email us with your idea.

WHAT'S NEW ON THE SHELVES

UNITED STATES

Centennial of the Trans-Mississippi Exposition Issue [a set of two souvenir sheets issued by the Trans-Mississippi Philatelic Society]

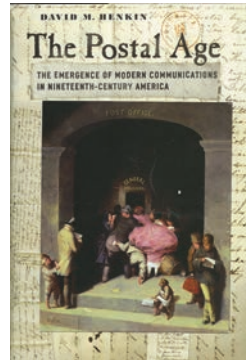
The Impact of Indian Attacks on the Pony Express, by Scott R. Trepel



Maybe We Need a Letter from God: The Star Trek Stamp, by Bill Kraft



Pacific Exchange: China & US Mail, by Cheryl R. Ganz
The Postal Age: the Emergence of Modern Communications in Nineteenth-Century America, by David M. Henkin
San Francisco Double Feature (CD) [SF postmarks and earthquake mail]



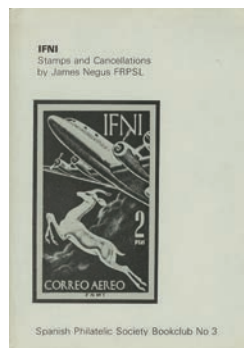
The Stamp Machines and Coiled Stamps, by George P. Howard
V for Victory (video about V-Mail) DVD

AFRICA

Cape & Natal Philatelic Journal (on 3 CDs)



Catalogue Zeheri des Timbres D'Egypte, 5th ed. 1950, by Ibrahim Chaftar Bey
Ifni: Stamps and Cancellations, by James Negus



ASIA

Large Dragon Stamps [in Chinese]

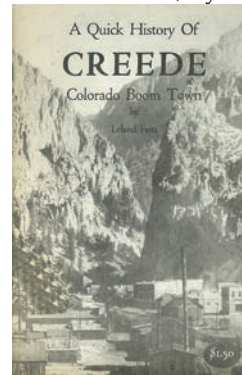
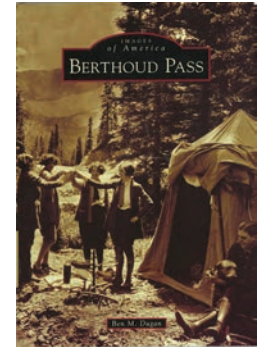
Space-Related Special Postmarks from 1958-1991, by James G. Reichman (CD)

COLORADO



Deer Trail in Profile

Images of America: Berthoud Pass, by Ben M. Dugan



A Quick History of Creede: Colorado Boom Town, by Leland Feitz

EUROPE



Bildpostkarten: Spezial-Katalog Nationalsozialismus, 1933-1945, by Irma Bernhard and Willi Bernhard

Handlerkatalog Norge

Deutsche Kolonien mit Sammlung Dr. Helmut Schmidt, auction catalog for the 110th auction by Wurttembergisches Auktionshaus September 2010

New on the Shelves, Europe, cont.

Deutsche Kolonien mit Sammlungen Dr. Helmut Schmidt und Harry Stadler, auction catalog for the 112th auction by Wurttembergisches Auktionshaus April 2012

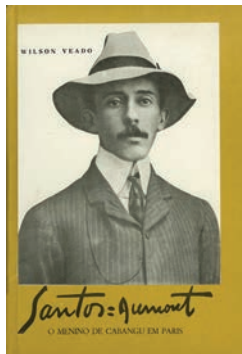
Deutsches Reich Brustschilder mit Sammlung Martin W. Sommer, auction catalog for the 112th auction by Wurttembergisches Auktionshaus April 2011

Michel Briefe-Katalog Deutschland 2003



The Postmuseum, published by the Postmuseum, Stockholm, Sweden

Preussen und Norddeutscher Postbezirk Sammlung "Drachenfels", catalog for the 112th auction by Wurttembergisches Auktionshaus April 2011



Santos Dumont (O Menino de Cabangu em Paris), by Wilson Veado

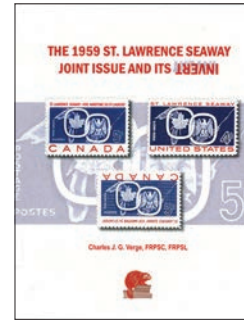
The Stoneham Catalogue of British Stamps, 1840-1995, 1983 Edition: Includes Great Britain, Jersey, Guernsey, Isle of Man

Space-Related Soviet Special Postmarks from 1958-1991, volumes 1 & 2, by James G. Reichman

The RMPL is open six hours a day, six days a week.



NORTH AMERICA



The 1959 St. Lawrence Seaway Joint Issue and Its Invert, by Charles J.G. Verge

SOUTH AMERICA

Centenario del Rescate de la expedición Nordenskjöld por la Corbeta Argentina "Uruguay", by Salvador Alaimo
Postage Stamps and Postal Stationery of the United Nations, by Rudolf A. Metall

TOPICAL

Journal of Sports Philately (CD)

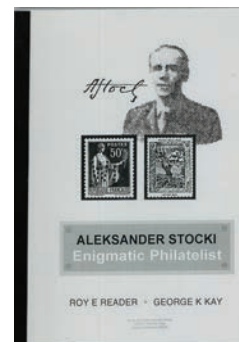
POSTCARDS

Border Fury: A Picture Postcard Record of Mexico's Revolution and U.S. War Preparedness, 1910-1917, by Paul J. Vanderwood and Frank N. Samparano



Boring Postcards USA, edited by Martin Parr

MISCELLANEOUS



Aleksander Stocki: Enigmatic Philatelist, by Roy E. Reader and George K. Kay

The Book of Stamps, edited by Jeffrey Kastner & Suba Najafi
Fakes Forgeries Experts, No. 15 (2012)

The Michel Stamp Catalogue: An Introduction for English-Speaking Readers, compiled by Martin Yeo, 1992

Proceedings of the First International Symposium on Analytical Methods in Philately (2013), edited by Thomas Lera, John H. Barwis, and David L. Herendeen

Treaties and Conventions of the Universal Postal Union (photocopy of the English translation of the original French document), in two loose leaf binders, Vol. 1 and Vol. 2



Post Masters: Arkansas Post Office Art in the New Deal, by John Purifoy Gill

AUCTION CATALOGS

The Brigham Collection of Canada: Part I-The Large Queen Issue 1868-1897, catalog for a Brigham Auction February 2014

The Flagship Series: United States, British and Worldwide Stamps & Postal History, catalog for a Daniel F. Kelleher auction May 2014

The Honolulu Advertiser Collection: The Stamps and Postal History of Hawaii

The Dr. Irvin Heimburger Collection of the 1869 Pictorial Issue, catalog for a Robert A. Siegel auction October 2013

Outstanding Nineteenth Century United States Postage Stamps, catalog for a Sotheby Park Bernet auction May 1977

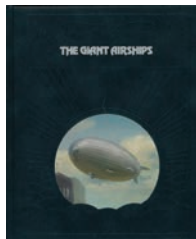
United States Stamps, catalog for a Robert A. Siegel auction March 2014

The Westpex Sale, catalog for a Schuyler Rumsey auction April 2014

The Wildhorse Collection: United States Revenues, catalog for a Robert A. Siegel auction March 2014

NON-PHILATELIC

Air Force Combat Units of World War II, published by the Office of Air Force History



The Giant Airships, by Douglas Botting

John Apostol Lucas: Teacher, Sport Historian, and One Who Lived His Life Earnestly, by John Apostol Lucas

New Russian-English & English-Russian Dictionary, by M.A. O'Brien

Place-Name Changes since 1900: A World Gazetteer, compiled by Adrian Room

Universiade 2001, Beijing: Youth United ; New Century Gathering of World Students

July-August 2014

AUCTION NEWS

One Auction was Amazing Another is Around the Corner

By David Weisberg and Sergio Lugo

The RMPL silent auction at the RMSS in May broke all records for a library auction, raising more than \$33,500, by far the biggest auction realization we've ever had. It was an astounding success.

Managed by David Weisberg, and staffed by RMPL volunteers John Sinski, Gene Holgate, Tom Suprenant, Glen Shaw, Robert Blatherwick, Don and Ellengail Beuthel, Bill Douglass, Sue Dunn, Frank Leitz and others, the auction centered upon US, Canada and provinces, and the British empire among its roughly 770 lots.

While there were numerous mail bidders, all were members of the RMPL, so we attracted very few bidders from outside the circle of RMPLers.

Congratulations to the many members who benefited from the auction. It goes to show you what perceptive people they are for recognizing the benefits of membership in this bright gem in the Rockies.



US No 120



Canada No 9

A very nice used U. S. Scott 120 with a catalog value of \$700 sold for \$625 while a Canada Scott 9 with a catalog value of \$3,500 sold for \$1,000.

One dealer who runs well attended auctions himself commented that he would like to have gotten the realizations we did.

As always, our thanks go to the many donors whose material donations went into a magnificent auction in terms of quality and realizations. A few lots did not sell and are still available at the library. They are priced at the starting bid. First come, first served.

BULK LOT AUCTION THIS FALL

The auction team already is hard at work again. This time they're preparing for the 2014 Bulk Lot Auction to be held on Saturday, October 25th at the RMPL.

Current plans are to hold it in two sessions. The first will be in the morning, for supplies, covers and perhaps a few stamp lots. The major stamp lots, including an extremely interesting three volume worldwide collection, will be in the afternoon.

WHERE THE MONEY WILL GO

All proceeds of our auctions go into RMPL operations. With the results we had in May, and the hoped-for results of the Bulk Lot auction in mid-October, the library is positioned to purchase approximately four computers, or to pay down the mortgage by another \$25,000 this year.

And we thank you all for your support!



SECOND SATURDAY PROGRAMS AT THE LIBRARY

Second Saturday programs are sponsored by the library and attract a friendly group of folks who are interested in a specific subject, or who are interested in learning more about an area of philately that may be new to them.

Contact Jim Kilbane if you would like to present a program. His email is aurora_80017@yahoo.com

The programs begin at 9:00 AM and are over by 10:00 AM.
Doughnuts and coffee are complimentary, and all are welcome.

July 12, 9 a.m.

Guam Stamps and Postal History

By Harry Pedersen

The presentation will cover Guam philately from the Spanish "Marianas" through U.S. Possessions "Guam" overprints, the Guam Guard Mail issues, and, of course, more modern covers.

The program will include the geography of the island along with its history. Also, having been stationed on Guam during service in the Navy, numerous photos taken around the island will be shown.



August 9, 9 a.m.

Spectrographic Analysis of British Phosphor Coated Paper Trial Failures - 1969 to 1979

By Steve McGill

This presentation details the results obtained from work done at the US Postal Museum in early 2014 via a grant provided by the International Analytic Philatelic Society (IAP).

Beginning in 1969, Royal Mail released a series of stamps on phosphor-coated-paper, all of which failed their field trials. Tests on samples of these stamps using the Museum's spectrographic analyzer reveal details of why the failures occurred.



FOR SALE

Note: This "For Sale" section is a free service for members of the of the library. Any reasonable submission with up to 60 words will be accepted. Send to the editor at wmmitchell@comcast.net. The deadline for insertion is one month before the publication date. The deadline for an item to appear in the next issue is August 1.

STAMP SALE by appointment at home.
Canada: Excellent two volume collection and odd lot bin.

Mint Australia: sheets, blocks, stationery.
Canal Zone: mint stamps, FDCs, literature, former Peter Adgie collection.
US mint sheets, press sheets, stamps all 20th century, large variety.
Other countries, odd lots.
S-G "Exeter" albums, supplies.
Week of July 7-13. Call Ron Hill, (303) 241-5409 for appointment.

NEW MEMBERS

The RMPL is pleased to welcome the following new members who have joined the library in the past two months.

John Lee Armbruster, Denver CO - Collects stamps and coins

Elizabeth Gordon, Gurley, NE - Collects topicals: Christmas, Planes, Trains, Peace and Food

Lester C. Lanphear III, San Diego CA - Collects U.S. Officials and U.S. penalty clause mail

BOARD OF DIRECTORS MEETING

Thursday, July 17, 2014
7:00 PM
All members are welcome!

OBITUARY

Our good friend and fellow philatelist, Bob Blundell, has passed away. Born in Peoria, Illinois on May 29, 1944, Bob died of a massive heart attack while visiting in Palm Springs, California on March 13, 2014. He was 69.

Bob was one of those individuals with "the gift of gab," as some might state colloquially. He could talk up a storm on any subject and keep that "storm" going ad infinitum!

But his conversations were always friendly as he focused on his collecting interest in China, or as he worked the front desk of the RMPL for several years, or as he worked feverishly on the remodeling of 2048 S. Pontiac Way/7070 E. Asbury for several months after the purchase and acquisition of the building.

In the past three years, Bob hadn't been able to work as diligently as he had in the past, because one of his legs had to be amputated. But even that was an occasion for waxing eloquently.

After a month-long rehabilitation, he managed to get back to the RMPL for visits on several occasions. And here Bob would roll up in his wheelchair and show off his prosthetic leg, which featured Broncos emblems.

Sadly, another album has closed on a person who was a delight for the library.

DONATIONS

The library thrives on the enthusiasm and generosity of its members. The following members have made donations to the library over the past two months. We thank each and every one who has contributed.

John Beard	Mary Ellen Markel
Bill Benjamin	Anthony Marks
Diane Blundell	Jeremy McClean
Craig Buhlman	Mike Milam
Gloria Capra	Thomas Miller
Sandra K. Carruthers	Jeff Modesit
Roger Cichorz	Dan Moen
Colorado Railroad Museum	James Mohrbacher
Peter Colwell	Stephen Nadler
Mark Commander	Margaret Najar
Jack Congrove	Randy Nilson
Peter Cowell	Thomas Pollard
Don Dhonau	Jim Reichman
Peter Ditlow	San Jose Stamp Club
Nolan Flowers	Scandinavian Stamp Club
Joan B. Grady	Marlene P. Siegel
Gary G. Hendren	Robert Sims
Tom Higel	James D. Singer
Ronald Hill	Robert Smetana
Michael Johnson	Richard Smith
Nora Johnson	George Snyder
Peggy Jording	Suzanne Stewart
Glenn Jowers	Donald Stone
Tom Kinberg	Richard Stucky
Bill Kraft	Stan Unruh
Cynthia Land	Barbara Van Horne
Rufus Lee	Andrew Wacinski
Carla Littlefield	Pamela Wettig
Ralph Lott	Martin Wilkinson
Sergio Lugo	Janet Wren

Donation Schedule

Please note that effective July 1, 2014, donations of philatelic material will be accepted only on specific days:

- Tuesday
- Wednesday
- Friday

Donations will be accepted on these days only, during regular library hours, 10 a.m. to 4 p.m.

People who bring donations on other days will be asked to please return with the materials on a Tuesday, Wednesday or Friday.

Thank you!



Hours: Monday, Tuesday, Wednesday, Friday, Saturday 10 a.m. - 4 p.m.
 Thursday 2 - 8 p.m.. Closed Sundays and Holidays. Phone: (303) 759-9921

Meeting times and places sometimes change. It is best to call the library or the club to confirm the place and time. A calendar of reserved club times is kept at the library by the Operations Manager, Don Beuthel. Clubs should check the calendar regularly and notify Don at (303) 755-9328 of any changes or updates. All requests to reserve meeting time and space other than those listed here must be approved and scheduled by Don well in advance, for philately-related meetings.

JULY 2014

July 2 - No regular meeting. See July 12.

July 4 -7 - Closed, 4th of July Weekend
 (closed Friday through Monday)

July 9 - Meeting - 7 p.m.

Denver Germany Stamp Club

July 10 - Meeting - 2 p.m.

Cherrelyn Stamp Club

July 10- Meeting - 6:30 p.m.

Denver Postcard Club

July 11 - Meeting - 7 p.m.

Austria-Hungary Club

Second Saturday at the RMPL

July 12 - 9 a.m.

Program by Harry Pedersen

Guam Stamps and Postal History

July 12 - Meeting - 10 a.m.

Mexico/Latin America Study Group

July 12 - Aurora Stamp Club Picnic - 6 p.m. at the library. \$10 to \$12 per person for catered food.

July 19 - Meeting - 9:30 a.m.

RMPL Young Stamp Collectors Club

Jul 20- Meeting - 2 p.m.

Great Britain & Commonwealth Collectors Club

July 23 - Meeting - 1 p.m.

Denver Stamp Club



AUGUST 2014

Aug 2 - Meeting - 10 a.m.

Scandinavian Collectors Club

Aug 6 - Meeting - Aurora Stamp club

6:30 p.m. trading, 7:00 p.m. meeting

Aug 8 - Meeting - 7 p.m.

Austria-Hungary Club

Second Saturday at the RMPL

Aug 9 - Meeting - 9 a.m.

Program by Steve McGill

Spectrographic Analysis of British Phosphor Coated Paper Trial Failures - 1969 to 1979

Aug 9 - Meeting - 10 a.m.

Mexico/Latin America Study Group

Aug 9- Meeting - 11 a.m.

Rocky Mountain Aerophilatelists

Aug 9- Meeting - 1:00 p.m..

Colorado Postal History Society

Aug 13 - Meeting - 7 p.m.

Denver Germany Stamp Club

Aug 14 - Meeting - 2 p.m.

Cherrelyn Stamp Club

Aug 14 - Meeting - 6:30 p.m.

Denver Postcard Club

Aug 16 - Meeting - 9:30 a.m.

RMPL Young Stamp Collectors Club

Aug 17- Meeting - 2 p.m.

Great Britain & Commonwealth Collectors Club

Aug 23 - Picnic - 5:30 p.m. at the RMPL

All members are welcome!

Aug 26 - Meeting - 7:30 p.m.

Rocky Mountain Stamp Show Committee

Aug 27 - Meeting - 1 p.m.

Denver Stamp Club

Scribbings is published bimonthly by the Rocky Mountain Philatelic Library, Ron Mitchell, Editor, 2038 S Pontiac Way, Denver, CO 80224. The Rocky Mountain Philatelic Library is a chartered Colorado nonprofit corporation and an IRS designated 501(c)(3) charitable organization. Membership subscriptions over that for the regular membership, and donations of appropriate philatelic materials, are deductible for U.S. income tax purposes.

RMPL BOARD OF DIRECTORS

President: Sergio Lugo - Operations Manager: Don Beuthel - Vice President: Jim Kilbane
 Corresponding Secretary: Roe Emery - Recording Secretary: Paul Lee - Treasurer: Bob Blatherwick
 Directors: John Bloor - Steve McGill - Dalene Thomas - David Weisberg. Director Emeritus: Don Dhonau.