

Scribblings

...from the Rocky Mountain Philatelic Library



Ron Mitchell, Editor

Ellengail Beuthel, Librarian

Vol. 21 - No. 5
www.rmpldenver.org

2038 South Pontiac Way, Denver, CO 80224
303.759.9921

September-October 2013
Email - rmpl@qwestoffice.net

IN THIS ISSUE

Essays, Trial Colors and Proofs	1
Prez' Observations	4
RMPL Members Receive APS Awards.....	5
Video Program Grows	5
RMPL Board Meeting Summary	6
Fakes: What in the World is Pale Carmine Red?	7
Pioneers of American Industrial Design: One Stamp's Story.....	8
Periodical Pickin's: SOSSI Journal	10



Bill Bauer Postal History Sale.....	11
Popular Annual Auction Coming in October ...	12
2nd Saturday Programs	13
CHERPEX Notice.....	13
20th Anniversary Party	14
Ellengail Wins Ultimate Award	15
What's New on the Shelves.....	16
Donations	18
New Members	19
Club Programs	19
Calendar	20

Essays, Trial Colors and Proofs

By Stephen B. Pacetti

An often overlooked area of U.S. classic collecting is that of essays, trial colors, and proofs. They are colorful, interesting, and the best of the master printer's craft. Frequently, they can also be quite affordable. They are listed in the Scott Specialized Catalogue of United States Stamps & Covers.

Before the U.S. Bureau of Engraving and Printing was established in 1894, the Post Office Department solicited design and printing cost proposals from private bank note companies when it decided new postage stamps were needed. The companies would then submit essays, or proposed stamp designs, for the POD's consideration. Only one design per denomination (1¢, 3¢, etc.) was finally selected, and the other essays became stamps that never were, so to speak. Scott numbers for essays begin with E.



Figure 1. Toppan, Carpenter & Co. essay.



Figure 2. National Banknote Co. essay.

Figure 1 shows an essay in blue submitted to the POD by Toppan, Carpenter & Co. for the 1861 Issue 1¢, printed on ivory paper. Figure 2 is an essay from the National Bank Note Co., in ultramarine. This design was chosen by the POD for the 1861 1¢ postage stamp, but printed in blue.

The POD also requested the bank note companies to provide trial color proofs for the approved stamp design to see how the actual issued stamp would look printed in different colors. Scott numbers for trial color proofs begin with TC.

Figures 3a-e (page 2) are trial colors in green, orange, brown, black, and blue submitted by the Continental Bank Note Co. for the 1873 Series 1¢ postage stamp. Ultramarine was chosen for the issued stamp.

When the bank note companies completed their proposed stamp design (essay) to submit to the POD, they wanted their product to look its best and make a good impression. Their master printers would "pull" proofs directly from the die, one at a time, using the best papers and inks. A special printing press was used for this purpose. The intent of a proof was to "prove" to the POD the quality private printing companies could produce in an issued stamp.

(continued)



Figures 3a-3e. Five colors were submitted to the Post Office Department by the Continental Bank Note Co. for consideration for the 1873 Series 1¢ postage stamp. Ultramarine, lower right, was selected.

A single die proof is referred to in philately as a “small” die proof or a “large” die proof. The adjectives modify the word “proof,” not die. In other words, the die is always the same size as the postage stamp, but the outer dimensions of the card with the printed proof is either small or large.

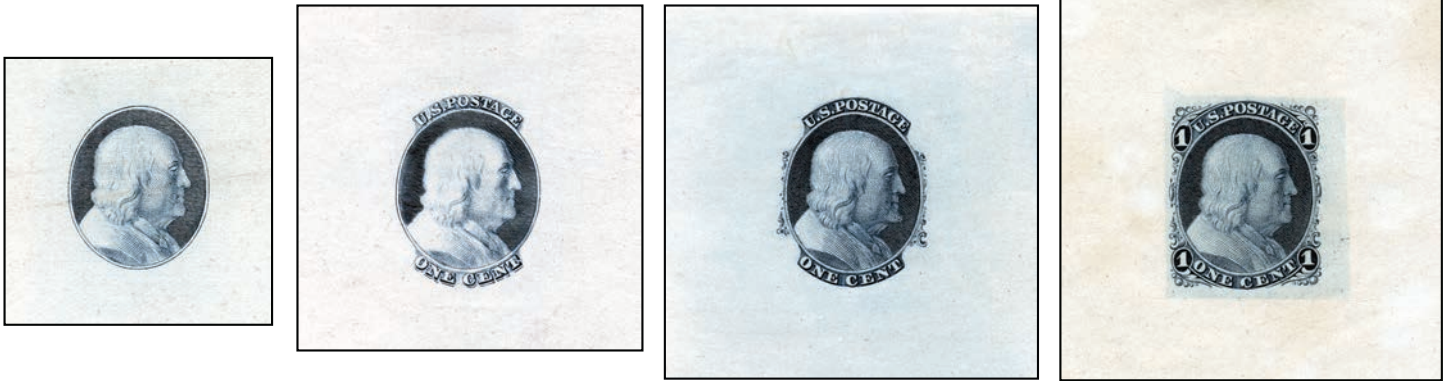
Figure 4 shows a small die proof, printed on wove paper in a gray-blue color. Note that its outer size is not much larger than the stamp itself. **Figure 5** is a large die proof of the 1873 Continental Bank Note Co. 3¢, printed on India paper and sunk on a stiff card. Many large die proofs have much larger outer dimensions.



Figure 4. Small die proof.



Figure 5. Large die proof.



Figures 6a-6d. Four stages of the design process. These are called progressive die proofs.

In addition to single proofs, the bank note companies used a master die to prepare full-sized printing plates of 100 or more stamp images. Then, plate proofs would be made on a regular printing press to show the POD what a full sheet of completed, final design stamps would look like. Plate proofs, however, were usually printed on a higher quality paper than the issued stamps. They are usually not perforated and can be obtained as single stamps or multiples. Scott numbers for all proofs begin with P.

The process of engraving to make the dies for postage stamps was long and tedious in the 19th Century. Master engravers were very specialized. Some only engraved the vignettes (the center, person's bust or other design). Others engraved only the frame designs surrounding the vignette.

Still others only engraved letters or numbers. Along the way from start to the finished die, progressive die proofs were pulled to see just how the engraving would look on a postage stamp. **Figures 6a-6d** are progressive die proofs.

It should be noted that essays, proofs, and trial colors were printed on a variety of paper stock, such as bond, card, regular stamp paper, and India paper. India paper was a favorite because it "took" the ink in a crisp and sharp manner. India, however, is very thin and fragile and is typically found pressed into card stock to give it needed strength.

Finally, **Figure 7** shows a large multiple plate proof of the approved blue 1861 1¢, printed on ivory paper. Note the "National Bank Note Co New York" at the top.



Figure 7. Large multiple plate proof from the National Bank Note Co.

You can learn much more about this subject online at the U.S. Philatelic Classics Society's web site at: <http://www.uspcs.org/essays-proofs/>. If you are a Society member, you can access many articles through the Web Chronicle in the members domain. Also, Chapter 2 in Don Evans', *The United States 1¢ Franklin 1861-1867* (Linn's Stamp News, 1997) has an excellent discussion of stamp production, from design (essays) to final printing (proofs).

The Prez' Observations

My days are usually filled with good and bad news. I hope this is true for most of you.

And this is one of those days for the RMPL.

The good news: A debate within the RMPL board has finally been resolved after sporadic but intense discussions for the past decade.

The bad news: Regular-level membership dues will increase from \$15 to \$25, effective January 1, 2014. Regular-level dues are paid by about 27 percent of our membership,

Here is the background for this decision:

Our board established membership dues in 1993, two decades ago. The RMPL's bylaws require annual review of the dues structure, but no serious review was done until 2003. At that time, it was recognized the cost of *Scribblings* exceeded the price of membership at the \$15 level. During the next decade, two dues-increase motions were defeated. A vote in April 2012 vote deferred the decision until we were closer to 2014.

At the July 2013 board meeting, it was decided to increase dues for regular members to \$25 because of the need for lead time on a variety of matters related to membership and *Scribblings*. But this doesn't fully explain the need for the increase. The next paragraph will do so.

Regular-level membership dues will increase from \$15 to \$25, effective January 1, 2014.

By 2008, the cost of *Scribblings* for U.S. members (printing, paper, postage, envelopes) increased to \$17 annually. The cost was \$18 in 2009, \$20 in 2010, and \$21 in 2011. Most of these increases resulted from copying charges built into our old copier contract, but there were other increases in postage because the mailing weight went up as we added pages to *Scribblings*. Paper costs went up, too.

We now have a new copy machine, and we anticipate that the costs of *Scribblings* will decline to the \$17 per annum range. We continue to apply donated postage, which we have managed to do for the past year.

Clearly, the cost of *Scribblings* outpaced the revenue from regular membership dues. To rectify that, we used proceeds from the auctions staged by the RMPL to subsidize the cost of *Scribblings* for our regular members.

For those of you who care to look at it a slightly different way, look at the country's Consumer Price Index. In January 1993, the CPI stood at 142.6, while in January 2013 it was 230.28. In other words, the CPI (synonymous in some circles with inflation) had risen by 62 percent. But not RMPL dues, which increased zero percent.

So some of us pushed for the dues increase, including me. Several board members were reluctant, and feared a loss of membership among the 27 percent of you who

are members at the "regular" level. I certainly hope that doesn't happen, since I think, and I am confident, many of you will agree that the nature of the services, offerings, and fellowship of the RMPL in no way bears a comparison to what we started with 20 years ago, or even a decade ago. But that's a decision to be weighed by each regular member.

Regular-level dues \$15.00

Scribblings Costs per member

2008.....	\$17
2009.....	\$18
2010.....	\$20
2011.....	\$21

Consumer Price Index

Jan 1993	142.6
Jan 2013.....	230.28
62 percent increase	

To make the increase palatable for those of you who are affected, there will be two advantages.

First, we will eliminate the distinction between borrowing books that adversely affected the \$15 regular member. As of January 1, 2014, regular members paid at the \$25-level will be able to check out books in person, or through the mail.

Second, dues for members who are scheduled to pay before December 31, 2013, will continue at the \$15-level until their membership renewal in 2014, when it will increase to \$25.

I sincerely hope all regular members will understand the need to raise dues and I hope they will continue to participate and contribute to the RMPL. Of course, they will continue to benefit from their membership.

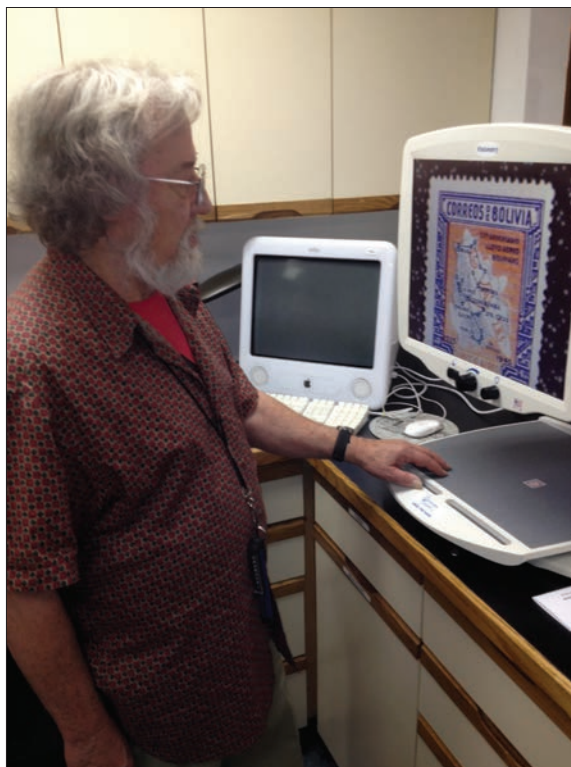
If you choose not to renew your regular membership, the best of wishes in your philatelic endeavors and we hope to see you at various philatelic affairs and events in the Denver, Colorado, and national level.

And as to the rest of the RMPL membership unaffected by this action, we can assure you that it will be many years down the road before any dues increase will affect you.

Sergio



New in the Library



Don Dhonau shows off one of the library's newest acquisitions, a table top magnifier. It is primarily intended for people with vision problems, but is available to anyone who wants a close-up view of a stamp. The magnifier is located in the back of the library, near the copy machines.

RMPL MEMBERS RECEIVE APS AWARDS

RMPL members were given accolades from the APS at the organization's annual StampShow in Milwaukee in August.

Travis Searles was recognized with a vermeil medal for his excellent work as the Webmaster for the library's pages on the internet. Many Web pages use standardized templates, but the RMPL's is set apart because Travis designed it from scratch, so it specifically fits our needs.

Board member Steve McGill received a Gold medal for his exhibit, "The British Denominated Machin Series 1967-2012." The exhibit was also in contention for the award for the best presentation at any APS accredited stamp show in the United States in the past year.

Other RMPL members who were exhibit winners were Stanley J. Luft (two vermeils for two exhibits), Edward Jarvis, William Johnson, Nicholas Lombardi, Larry Nix, and Elizabeth Nettles.

Congratulations to all.

A report on librarian Ellengail Beuthel's prestigious volunteer award may be found on page 15.

VIDEO PROGRAM GROWS

By Sergio Lugo

The video program of the RMPL, begun this year, continues to grow with additions made in August and anticipated additions in September.

The latest one is "Tasmania Part 2: The Pictorial Stamps During Federation 1901-1913," written by Ron Hill and produced by Joe Lanotte. It goes into some detail about how the quality of printing deteriorated badly when Australian shops took over the print job from the De La Rue Company of London. To view the video, go to the RMPL home page at www.rmpldenver.org and click on "Videos" in the menu on the left.

	#103	#95	#96	of Issue
Water				1903
V Cr				1902
V Cr				1902
V Cr				1902
V Cr				1902
Crow				1905
Crow				1905
Crow				1907
Crow				1908
Crow				1908
Crow				1904
Crow				1907
Crown A	electrotyped	3d		Mar 1909
Crown A	electrotyped	6d		Dec 1910
Crown A	electrotyped	ONE PENNY on 2d		Oct 1912
C A (thin paper)	electrotyped	1d		Dec 1912
Crown A	electrotyped	3d		Dec 1912

A frame from the second Tasmania video shows some of the varieties found on pictorials, which were printed in Australia instead of London.

The first Tasmania program may also be found on the Web page and YouTube. It tells the story of the stamps printed in London.

Another addition this month is written guidance for the Video Education series. It is intended for those who would like to join us with a video of their own. The Video Education Series Narrative provides an in-depth insight into considerations in developing a video, an outline of a production, and suggestions and hints on writing. You are welcome to download the guidance document, and discuss it with those involved in the production. We are looking for authors willing to develop the 4 to 5 page, 8 ½ minute script, that begins the video production process.

Lastly, you may look forward to two additional videos being placed on our Web site and YouTube in September. They will focus on the RMPL's Youth Stamp Club and the U.S.-German Seapost of 1891 to 1939.



PLEASE!

Return books on time...

RMPL Board Summary

Meeting of July 18, 2013

The RMPL board meeting was attended by all board members, except Roe Emery. Minutes of the prior meeting were approved.

Old Business

- The updated register of board actions since the opening of the library was distributed by Paul Lee.
- The Rocky Mountain Stamp Show auction realized \$28,500 for the library, our highest total ever.
- Per prior board decision, \$1,000 was donated to the Western Philatelic Library to assist with their new mortgage.
- Two additional videos are anticipated to be on the RMPL web page and YouTube.
- The library has been included as a beneficiary of the Vic Neas estate and we are awaiting disbursements, if any, in the near future.
- Peter Bergh's book *Danish Øre Bicolor Issues*, published by the RMPL, received a silver medal at NAPEX 2013 in Washington, D.C.

Property Taxes

- We have had no word on decisions from the state regarding our property tax exemption applications. Subsequent inquiry revealed that we will probably not have a decision until October.
- An unexpected increase in the property tax valuation of the empty parcel (our gardens) was received, raising the valuation from \$25,000 to \$75,000. Rather than appealing, we have decided to await the decision involving the property tax exemption applications.

Picnic Plans

- The August 17th picnic is scheduled to start at 5:30 p.m. Arrangements are proceeding. All households attending are welcome to bring a dessert entrée. The member who brings the best cake will receive a prize. At the moment, we have 60 confirmed reservations and are expecting 100. All need to RSVP to Dalene Thomas so we can get a count to the caterers, who will be supplying the burritos, and so we'll also know the amount of refreshments. The RMPL board appropriated \$1,000 to cover expenses.

Parking Lot Repaving

- The board approved \$15,000 for replacement of the 2048 S. Pontiac Way parking lot. Four requests for price quotes have been sent. Should the quotes exceed \$15,000, we will have to revisit the decision via an electronic vote. It is hoped that the parking lot can be repaved by the end of September.

New Business

- Suggested amendments to the RMPL's bylaws were tabled until a future time.
- The new daily closeout of the cash register was explained. Late shift volunteers have been implementing the closeout procedures for the past six months.

Membership Dues

- Membership dues for the basic level were discussed at length. By a vote of 8 to 1, it was decided to raise membership dues at the basic level from \$15 to \$25, effective January 1, 2014. More details are in the *Prez' Observations* on page 4.

Donation Limitations

- The matter of finding methods of limiting donations that have very little value, but take up tremendous amounts of time to process, was discussed. This has been an ongoing sore point for years as the RMPL has grown. No decision was reached, in light of the significance of donations to the RMPL. One change was adopted. Front desk volunteers will escort donors to the Asbury Building where they may leave their donation, thereby reducing clutter, unsightly appearance, and pressure to process large lots in the main library.

Long Range Planning

- The RMPL's long range three year budgeting plan will be updated. Paul Lee and David Weisberg's three year plan of 2010 has been fulfilled in all particulars except one. The plan helps the board focus expenditures on projects that require long term capital outlays.

Society Journal Printings

- The printing of society journals has been successful. At this point the RMPL is earning 30 percent on invoices. That amount, however, does not take into account taxes yet to be paid or the costs of labor supplied by the RMPL. The committee responsible for purchase of the copiers is very pleased with the Xerox Corporation.

- Last up for consideration were comments to submit to the APS Stamp Show general meeting in early August. The board declined to submit any comments.

The meeting adjourned at 9:10 p.m.

The next board meeting is scheduled for September

FAKES

by Joe Lambert

What in the World is "Pale Carmine Red"?

In an earlier column we mentioned the frequent faking of Scott #519, the perf. 11 double line watermarked 2¢ stamp of the Washington Franklin series. As you recall, the postal service located a number of imperforate double line watermarked 2¢ sheets printed several years earlier, and perforated them with the perf. 11 wheels then in use. This created the fairly scarce Scott #519, which has given rise to many, many fakes made by perforating the relatively common imperforate Scott #344.



Yoda

As Yoda enlightened us in Star Wars Episode V, "There is another".....



Pale carmine red, Scott #461



Carmine/carmine rose, Scott #499



Deep rose, Scott # 500

Once more, the postal service located some imperforate sheets printed years earlier and put them in the perf. 11 machine. Once more, these were 2¢ sheets, this time single line watermarked and of the later Washington Franklin ("2 cents" as opposed to "two cents") design. Voila, the somewhat uncommon Scott #461.

Listed in the catalog as "Pale Carmine Red." Some people say it has almost an orange appearance

It is frequently faked by perforating the common imperforate Scott #409.

It is a good idea to find a Scott #461 to become familiar with the color. Most fakes of this stamp are the wrong shade, thus a complete giveaway.

The illustrations show a genuine #461 (pale carmine red), a #499 (carmine/rose) and a #500 (deep rose). Color reproduction is not always perfect, so collectors should find the real thing and see for themselves.

It is helpful to have a certificate of authenticity with #461, but not necessary if the stamp is indeed "pale carmine red" and is from a reliable origin.

This color is also occasionally found in Scott #425 (perf. 10 watermarked) and #409 (imperforate). The only convincing fakes are made from imperforates, and fortunately the color does not often appear in imperforate stock.

This is one stamp where the fakes most often give themselves away without detailed examination, just because of their color!

Pioneers of American Industrial Design – One Stamp’s Story

by Art Lizotte

While vacationing in the small town of Waitsfield, Vermont, I happened upon a philatelic connection. In this very quaint town nestled in Vermont’s Green Mountains and adjacent to a beautiful covered bridge crossing the Mad River there is a small museum dedicated to industrial design.

The Madsonian Museum of Industrial Design hosts a collection dedicated to streamlined designs of everyday life. When I happened to visit the museum they had a special exhibit on display dedicated to work of Walter Dorwin Teague.

Teague is featured on the Pioneers of American Industrial Design Forever stamps released in 2011 (Figure 1). The Teague stamp features his 1934 design of Eastman Kodak’s Baby Brownie camera with its eye-catching art deco styling (Figure 2).

In the museum’s photo (Figure 3), there are two similar camera designs that were available during the 1939 World’s Fair in New York City. You may be able to notice on these cameras’ faceplate the distinctive Tylon and Perisphere we know so well from that year’s World’s Fair 3¢ commemorative (Figure 4). Teague is known also for his part in this World’s Fair as the designer of the Ford Building (pictured on the camera box).



Figure 1. The Pioneers of American Industrial Design stamps honoring 12 designers. The sheet was issued on June 29, 2011 at the Smithsonian’s Cooper-Hewitt National Design Museum.

We read on the back side of Forever stamp sheet: “Known as the ‘dean of industrial design,’ Walter Dorwin Teague (1883-1960) believed that good artistic design fit both form and function into a single aesthetic package.” Yet industrial design isn’t where Teague’s career began. Prior to work in this field he was an illustrator in the 1920’s, designing borders for items such as books and advertisements. His borders, due to their popularity, grew to be known as “Teague Borders.” Even when others imitated them, they still carried this moniker.

As I was enjoying the exhibit, I learned about a presentation titled: The W.D. Teague Stamp Odyssey. Though I wasn’t present for the museum’s presentation, I worked with Ralph London, the presenter, to share this stamp’s interesting story. While Ralph didn’t have anything to do with the creation of the stamp, he knows the story well and helped me with the details.

As most commemorative stamps do these days, the story begins with the Citizens’ Stamp Advisory Committee. Quite some time before the stamps were issued Teague’s granddaughter was contacted about how her grandfather was going to be honored on a stamp. Her help was sought in accurately completing the stamp’s design – a good thing as it turned out.

While there were numerous subjects that could have been chosen, the camera was suggested by a consultant – and here is where the story gets interesting. The consultant was considering one of two cameras for the stamp, Eastman Kodak’s Brownie Hawkeye and the Baby Brownie, believing both were designed by Teague. With the advice of a camera collector and photo historian, Teague’s granddaughter pointed out that her grandfather did not design the Brownie Hawkeye,



Figure 2. One of Walter Dorwin Teague’s Kodak Brownie designs.

though it was sometimes attributed to him. Thus, the Baby Brownie became the camera on the stamp, averting a serious mistake.

The challenge of finding a Baby Brownie to photograph was easily solved because the camera collector already knew another camera collector who had eight of them – mint in box! The second collector sent the cameras off, allowing the photographer to choose the best one to be photographed for the stamp.

The photographer, curious about the camera's operation, asked the owner about the function of a button on the side of the camera. Uncertain of the question being asked, the owner asked for the photo of the camera identifying the button because he knew there wasn't a button on the side of the camera. At that point the owner understood what had happened and pointed out that the camera was photographed on its side¹ and not how a person would hold it to take a picture. The button was a lever on the bottom of the camera used to open and close it. And so a second mistake was averted.

Of course, the photos of the camera were retaken with the camera positioned properly and we have the stamp as it appears today.

If the stamp went to print with these sorts of mistakes what fun the philatelic community would have had, not to mention the camera collectors.

One other twist to the story is how Teague came to work at Eastman Kodak. It turns out that Teague was competing with Norman Bel Geddes, one of the other designers also honored in the stamp series. Adolph Stuber, the person involved with hiring Teague as a consultant for Kodak, felt that Bel Geddes was "an uncontrollable artist" but Stuber was intrigued with Teague and thus he received the assignment.

Norman Bel Geddes was a noted champion of streamlining and was a founding member of the American Society of Industrial Designers. Featured on his stamp is the "Patriot" radio manufactured by Emerson Radio and Phonograph Corporation with its "red-and-white grill that echoed the stripes of the American flag."

So would we have the Baby Brownie today if Bel Geddes had been hired by Kodak or would we have the "Patriot" radio if Bel Geddes did not design it for Emerson Radio? How would these products have differed if these two men had been given each other's assignments? Clearly these are questions for the ages.

Industrial design influenced a product's aesthetics and we have all come to love the contributions these pioneers brought to their work and creations. This stamp series is a wonderful snapshot of the people who were involved with the things we've used in our everyday lives. And if you're ever in Waitsfield be sure to visit the museum.

[Ed. note: You may also see most of the items displayed in the stamps at the Kirkland Museum of Fine and Decorative Art at E. 13th Ave. and Pearl St. in Denver.]

References:

¹ To see an image of the first camera: http://www.kodakcollector.com/index.php?option=com_content&task=view&id=75&Itemid=110

² USPS Press Release: http://about.usps.com/news/national-releases/2011/pr11_078.htm



Courtesy Madsonian Museum of Industrial Design

Figure 3. Cameras and a 1940 book by Walter Dorwin Teague are among items on display at the Madsonian Museum of Industrial Design in Waitsfield, Vermont.



Figure 4. Enlargements of parts of the front of the cameras in the museum photo near the top of the page allow a comparison with the World's Fair stamp of 1939. The design of the Tylon and Perisphere may be found near the lens of each camera.

SOSSI Journal

by Sergio Lugo

The SOSSI Journal is the official publication of the Scouts on Stamps Society International. It is in its 61st year of publication, so its first year was 1952. For those 61 years a vibrant, energetic publication commemorating Scouting has been available to the philatelic public.

My purpose in highlighting it is as an introduction to our readership of the many facets of Scouting on stamps. Future issues of *Scribblings* will feature other Scouting topics, until we reach the May-June, 2014 issue, when the annual gathering of the SOSSI will be held at the Rocky Mountain Stamp Show in May. So all you collectors who have had an interest in the multifaceted aspects of the interplay between stamps and Scouting, be prepared for a rousing series of articles on the subject.

But enough of that, what about the periodical. Published bimonthly, the black and white format of the journal normally is about 28 pages. As a Scouting related publication, the journal is a part of the International Federation of Scout & Guide Stamp Collecting Organizations. That means there is more than one Scouting stamps organization on this blue marble. With a membership of approximately 750, the Journal manages to keep its finger on the pulse of many and varied news stories for its articles. Its very nature tends to direct the Journal into current philatelic news stories featuring events and new issues, ranging from Scouting activities regionally, nationally and internationally, to specific upcoming cachets and cancellations. Interestingly, because of the proliferation of cinderella, local post-type material, SOSSI devotes a column to such Scouting accentuated local posts.

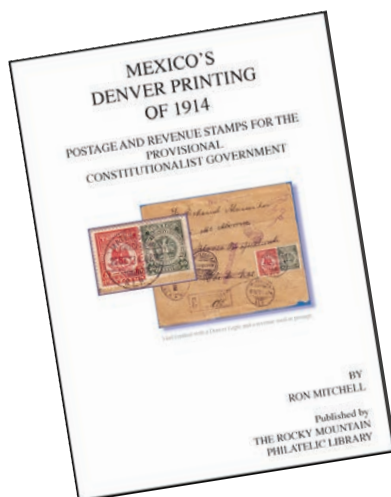
Internet activity (primarily eBay) receives a column of attention, and as could be expected so does Lord Baden-Powell and his life and exploits and other classical Scouting materials. Girl Scout activities also receive several pages of attention. The last four pages of the Journal are devoted

to paid advertising and a membership page. A generally light read, the SOSSI Journal tends to mirror the interests of its youthful target audience, and the many scouts cum adult leaders who comprise its membership. For more information on the organization and its journal, you are welcome to pay a visit to www.sossi.org I took some time to look at it, and was astounded by the amount and variety of pages devoted to Scouting on stamps. To my amazement, I learned that a special category of such stamps involved scouting-related *perpins*! I was not prepared for that.

The RMPL's run of the SOSSI Journal from 1952-2011 is missing just 8 numbers.



RMPL Publications available ...



Danish Øre Bicolor Issues

by Peter Bergh

\$40 postpaid in the U.S.

Mexico's Denver Printing of 1914

by Ron Mitchell

\$50 postpaid in the U.S.

RMPL
2038 So. Pontiac Way
Denver, CO 80224

Bill Bauer Postal History Sale

By Roger Rydberg, RMPL Membership Chairman



Lake City, Sept 17 75 – One of two recorded territorial manuscripts from Lake City.

After much anticipation the William H. Bauer collection of Colorado Postal History was sold at auction by Schuyler Rumsey Philatelic Auctions, for the benefit of the American Philatelic Society. A charter member of the RMPL, Bill Bauer was a great friend of the library.

The sale was held during the WESTPEX stamp show in San Francisco, CA on April 25, 2013. Pre-sale estimates were close to \$100,000.00 while actual realizations reached \$212,000.00, with many lots bringing record prices for Colorado material.

The sale consisted of approximately 220 individual lots of Colorado pre-territorial, territorial, and express covers. Seven balance lots were offered that included a

Colorado “Box Killer” collection, territorial remainders, Denver territorial postal history, and a lot described as a Colorado “Boosterism” exhibit.

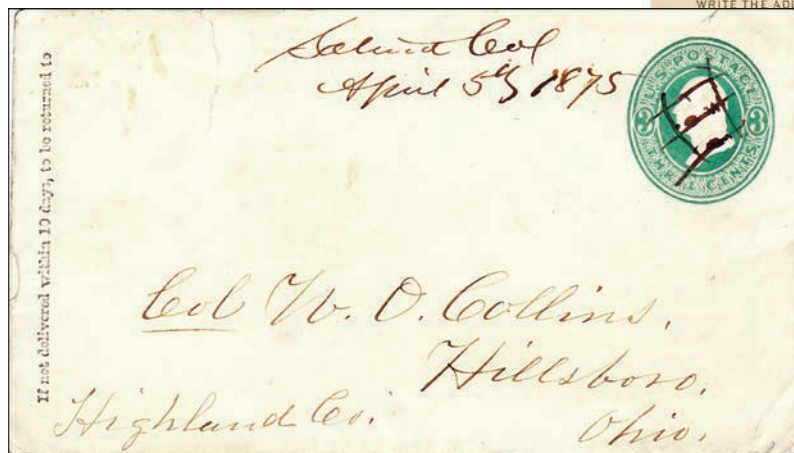
A large lot, number 831, included more than 2,300 statehood covers, and an extensive collection of photographs taken during Bauer’s and Jim Ozment’s travels across Colorado researching Colorado post office history. All of this was mounted on 8½” X 11” pages and housed in 240 one inch binders.

A few items from the sale are illustrated. The entire catalog is available for viewing at the library along with a copy of Bauer’s “Colorado 1858 – 1876 Pre-Territorial and Territorial Periods” exhibit.

Right: Rosita, Colorado, Feb. 25, 1876 – Violet boxed date stamp with black segmented bar handstamp. One of only two recorded examples of the Rosita box cancel used during the Territorial period.



Left: Salina, Col., April 5th, 1875 – The only known territorial postmark from Salina.



Popular Annual Auction Coming in October

The RMPL's annual Bulk/Large Lot Auction will be on Saturday, October 19th this year.

There will be nearly 100 lots in the "supplies" portion of the auction, beginning at 10 a.m. in the large room downstairs in the library annex. Used and new albums, stock pages and stock books will be featured, along with covers.

Then at 1 p.m., 180 lots of stamps and more stamps from almost every corner of the world will be sold in the meeting room upstairs in the annex.

"We don't want to put anything back in the sheds," explained Auction Manager Dave Weisberg, "so our minimum bids are very low. We want our members and friends to be able to add some attractive lots to their collections."

David has spent the last several months organizing donations that fit in the Bulk/Large Lot Auction.

One feature of the auction is a collection of Great Britain with an estimated catalog value of \$6,000 and a minimum bid of \$750. A page from the collection is illustrated on the left.



There are 15 different "Seahorses" high values from the reign of King George V in a collection of Great Britain housed in a Stanley Gibbons Windsor Loose-leaf Album.



There's no telling what you might find in lot 265, a banker's box full of stamps.



Auction Manager Dave Weisberg hauls another cart loaded with albums into the downstairs conference room, where they will be sorted and prepared for auction. There are stacks of lots he has already assembled behind Dave in the hallway.

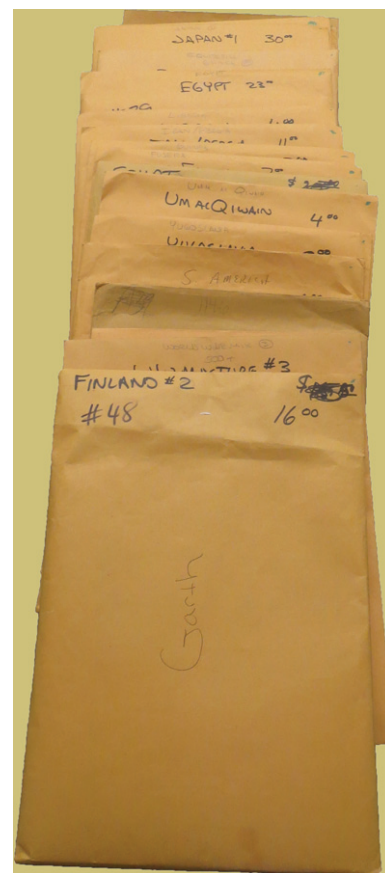
Dave says there are several large lots of United States material, and an interesting large group of Postal Commemorative Panels issued by the Postal Service with first day cancels, including a complete set of 1992 Columbians.

Last year's auction was considered a huge success with about 40 mail bidders, and a total of nearly 60 who showed up in person to place their bids.

The catalog is included with this issue of *Scribblings*. Please look it over carefully and plan to take part in the auction. All the money raised will go directly to the operation of the library, since all staff members are volunteers.

Viewing times will be Monday through Friday, October 14th through 18th, during regular library hours. The stamp lots will be open for viewing beginning at 10 a.m. Saturday, when the supplies auction begins.

Right: More than two dozen large envelopes with 1000s of stamps from many countries make up lot 262.



SECOND SATURDAY AT THE LIBRARY



Second Saturday programs are sponsored by the library and attract a friendly group of folks who are interested in a specific subject or who are interested in learning more about an area of philately that may be new to them. Contact Jim Kilbane if you would like to present a program. email: aurora_80017@yahoo.com



The programs begin at 9 a.m. and are over by 10 a.m.
Doughnuts and coffee are complimentary and all are welcome.

September 14, 9 a.m.

Mysteries of the Washington Franklins Revealed

by Joe Lambert

Correctly identifying the Washington Franklin stamps has been described as a problem that challenges our best philatelic intellects. However, they are not inexplicable. Joe Lambert's program will be a brief explanation of the Washington-Franklin series, which seems so mystifying to many collectors when first they see it.



October 12, 9 a.m.

*Ryukyu Postal Stationery under U.S. Administration
1947-1971*

by Tom Suprenaunt



There are three specialized catalogs of Ryukyu postal stationery in the stacks of the RMPL, and to judge by an internet search, there are more collectors than you might think for what appears to be a small collecting area. Come to Tom's program to see what all the fuss is about. Beautiful Japanese art, show cards and letter sheets will be shown.

SHOW NEWS



13+ Dealers

If you would like a table, call Eric Carlson at (303) 694-4252

For the 39th time since 1939, the Cherrelyn Stamp Club of Englewood is proud to present

CHERPEx

Friday and Saturday,
September 27 and 28

Hours:
Friday 10 - 6
Saturday 10 - 5

13+ Dealers

Jefferson County
Fairgrounds
15200 W. 6th Ave.
Golden, CO 80301

Free Parking
Large, Well Lit Room

13+ Dealers

Party Pictures!

From our anniversary celebration in our gardens on August 17, 2013..



Dan Nieuwlandt with children Pete and Katie.



Helen and Joe Lanotte.



Ginny and Frank Leitz.



Tonny VanLoij points out some features in the gardens he created in the RMPL's vacant lot. Tonny is a "Master Gardner" and recently received the Denver Botanic Gardens highest award for a volunteer.

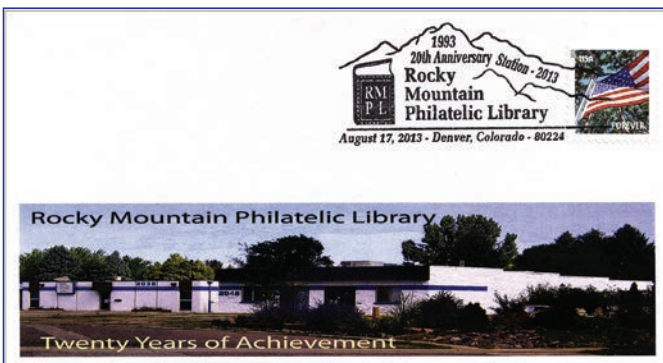


Randy and Chris Alexander.



Anita and John Bloor.

The RMPL 20th Anniversary Cachet



Our two buildings and the gardens are a grand representation of the RMPL.

A limited number of caches are available to members free of charge, first come, first served. If you were not given one at the 20th anniversary party, all you have to do is drop a #10 SASE in the mail to the RMPL and one will be sent to you, while supplies last..

For additional cachets, and for non-members, please send \$2.00 per cachet, along with a #10 SASE, addressed to: RMPL, ATTN: 20th Anniversary Cachet, 2038 S. Pontiac Way, Denver, CO 80224.



Lewis Bussey and Linda Surbaugh.



Rich and Erin Palestro.



Parking was at a premium in our lots and on the streets of the neighborhood as more than a hundred members and their friends gathered to celebrate the 20th anniversary of the RMPL.



Decisions, decisions! Some members brought cakes and the winner of the people's choice award was the one in the center with raspberries around it, baked by Sue Dunn.



Left: Ron Hill and Judith Wright.



Right: Jack and Sandy VanEns.

Ellengail Beuthel Receives Top APS Award



Ellengail Beuthel, RMPL librarian, received the ultimate award for a local volunteer from the APS. The award was presented by Sergio Lugo at the 20th Anniversary Party.

Ellengail Beuthel has received a major award from the biggest philatelic organization in the country.

Ken Martin, Executive Director of the American Philatelic Society, says the award is for "...her nearly 20 years of service as chief librarian for what is probably the second largest philatelic library in the United States."

It is the Nicholas G. Carter Volunteer Recognition Award for outstanding service and innovation to the hobby.

Ellengail's outstanding service is the more than 15-thousand hours she has spent at the library cataloging books and maintaining formal protocols.

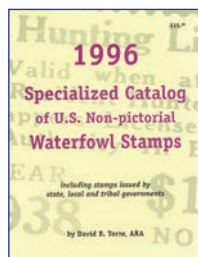
On the innovation side, she was instrumental in the early beginnings of the Global Philatelic Library on the internet, which now has 350,000 entries. She also took the library card catalog into the computer age, a monumental, but crucial, task. And she doesn't even collect stamps!

The RMPL board of directors joins our members to salute Ellengail, and we are pleased and proud she received this honor.

And she doesn't even collect stamps!

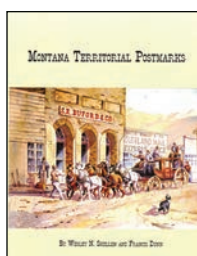
WHAT'S NEW ON THE SHELVES?

UNITED STATES



Catalog of U.S. Non-Pictorial Waterfowl Stamps: State, Local, and Tribe Issues, by David R. Torre

Comprehensive Catalog of Indian Reservation Stamps, by Michael Jaffe



Montana Territorial Postmarks, by Wesley N. Shellen and Francis Dunn

Plate Blocks: The Stamp Collector's Edge, by Richard L. Lazorow

AFRICA

Post Offices and Postal Agencies of the Sudan, 1970-1983, by H.R.J. Davies



South African Airmails: An Outline of the Airmail Services Affecting South Africa, with a listing of Aerophilatelic Material Flown to, From or through South Africa, for the Period up to 7th February 1994, by Nicholas Arrow

Supplement to South African Airmails, by Nicholas Arrow

ASIA



The 26th Summer Universiade Shenzhen 2011 Catalog of Coins and Stamps, published by the Okada Book Store

Celebrate the 20th Anniversary of the Founding of the Shenzhen Economic Zone, issued by

China: *Gazetteer of Chinese Language Symbols and Names*, Guangdong Philatelic Corp. & Shenzhen Philatelic Co.



Japanese Native Character Type C.D.S. Used in China 1889-1945, by Hisanori Hosaka

Japanese Occupation of China Comprehensive: Comprehensive Scott-Ma-Chan Cross-Referenced, published by Michael Rogers Inc.

Japanese Postmarks: Supplement and Correction Edition [no author]

Japan Money Order and Postal Indicia [no author]

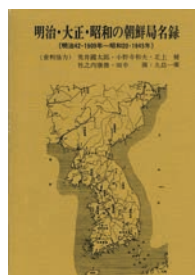
Japan: Post Offices of Hong Kong, Korea, Kwantung, Taiwan Karafujo, Chisma, Manchuko [no author]

Japan: Ship & Railway Japanese Markings [no author]

Pictorial Japanese Stamps with Symbols [perkins, etc.], published by Meiji Stamp Co. (1980)



Postmarks of the Hokuriku Line: 14th meeting of the Railway Postmark Group in Honor of the Fukui Convention, published by the Tetsuyūin Gurūpu (Railway Postmark Group)



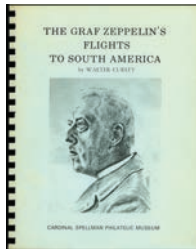
Showa Periods: List of Post Offices in Korea; Meiji 42 1909-Showa 20, 1945 [no author]



EUROPE



100 Years of "La Semeuse," by Ashley Lawrence
British Stamp Exhibitions: A Priced Catalogue of Sheets, Cards, and Labels, by Glenn H. Morgan
Catalogue Officiel de Timbres-Poste Belgique, Congo-Belge, Ruanda-Urundi, Zaïre, Rwanda, Burundi, Eruopa et Idées Européennes [1998 and 2001 editions], published by Chambre Professionnelle Belge Des Négociants En Timbres Poste, Brussels



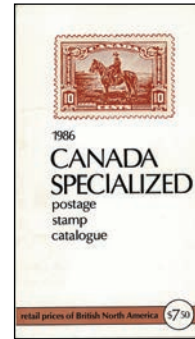
The Graf Zeppelin's Flights to South America, by Walter Curley
The London Philatelist: The Journal of the Royal Philatelic Society London; Archival Edition 1892-2005, on CD, in two boxes of CDs
Mail of the Czechoslovak Legions in France, by Jaroslav J. Verrer



Ohlar o Ambiente [1987 European Year of Environment], published by Correios e Telecomunicações de Portugal
One Hundred Fifty Years of Railways in Britain, published by the British Post Office
Revenue Stamps of Latvia, by W. Apsit, B. Egle, and J. Norton (loose leaf, with Stamps of Latvia)
Stamps of Latvia, 1979, published by Stereo Stamps (loose leaf, with Revenue Stamps of Latvia)
Torino, 2006: Collezione Filatelica Ufficiale [Official Philatelic Collection], published by Poste Italiane

The RMPL is open six hours a day, six days a week.

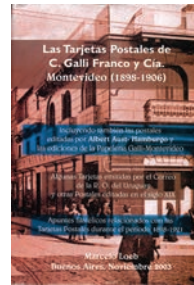
NORTH AMERICA



Canada Specialized Postage Stamp Catalogue [1986], published by Canada Specialized Ltd.

SOUTH AMERICA

Catalogo Especializado de Estampillas: Bolivia S. Xix y Enteros Postales (2000), published by Sofilpaz



Ensayo de Catalogo, Especializaeo de las Tarjetas Postales Ilustradas y los Enteros Postales Editados en la República Oriental del Uruguay, by Marcelo Loeb
Philatelic History of the Civil war between Peru and Chile, 1879-1884, by W.G. Howland

UNITED NATIONS

1993, 1994 *New York Annual Collection*, published by the United Nations Postal Administration



Timbres Emis a Geneve en 1993, 1994: Timbres-Poste de Organisation, published by the United Nations Postal Administration
Wiener Jahressammelmappe 1993, 1994 in Wien Herausgegebene Briefmarkender Vereinten, published by the United Nations Postal Administration

TOPICAL

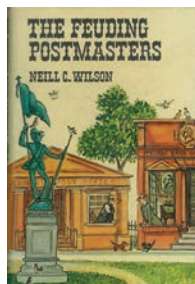
The World Refugee Year Postage Stamps, published by the United Nations Staff Fund for Refugees

POSTCARDS

The Sid Braverman Collection: Synagogues & Anti-Semitic Postcards, catalog for a House of Zion auction February 2009

MISCELLANEOUS

"America Moves the Mail": A Brief History of Mail and Mail Delivery in the United States, a Stamp Collecting Month exhibit, October 2013, sponsored by the youth program at the Rocky Mountain Philatelic Library



The Feuding Postmasters, by Neill C. Wilson
 "Firsts" in U.S. and World-Wide Postage Stamps, a Stamp Collecting Month exhibit, October 2012, sponsored by the youth program at the Rocky Mountain Philatelic Library
 [Stamp] Formats, published by Hélio Courvoisier SA



Official Photo Cachet Catalog of Postal Arts Cachets (1982), published by the American Postal Arts Society
 Stamp Design Contest 2010, sponsored by the Stamp Collecting Month Project of the youth program at the Rocky Mountain Philatelic Library

AUCTION CATALOGS

The Georg Von Steiden Collection of Carpatho-Ukraine, catalog for a Raritan Stamps auction February 2010
Österreich, Lombardo-Veneto & Ungarn, catalogue for a Corinphila auction December 2010

BOARD OF DIRECTORS MEETING

Thursday, September 19, 2013
 7:00 PM
 All members are welcome!

NON-PHILATELIC (Railroads)

Die Eisenbahnen des Brasilianischen Staates São Paulo, by Alberto Kuhlmann

NON-PHILATELIC

Cassell's New German and English Dictionary With a Phonetic Key to Pronunciation, by Karl Breul



Desert Crossroads, published by the United States Department of the Interior

DONATIONS

The library thrives on the enthusiasm and generosity of its members. The following members have made donations to the library over the past two months. We thank each and every one who has contributed.

Paul Albright	Mark Horan
Patrick Appelhans	Charles Klein
Richard Auer	Richard Lansing
Richard Axtell	John Laur
John Bloor	Cliff Lushbough
Grace Bornheim	Glenn Mallory
Tom Breay	Howard Marcove
Lewis Bussey	Robert J. Mather
Gloria Capra	Mike Milam
Candace Chapin	Doug Parro
Bonnie Collett	Gary Rodgers
John Deleon	Christopher D. Ryan
Erwin Engert	Roger Rydberg
Doug Fox	Aaron Smith
William Frear	Colin Spong
John Gaudio	Colleen Tovani
Gary Gibson	George VanTrump
Leslie Alan Gorsuch	Tony Wawrukiewicz
Michael Hardin	Dave Weisberg
Mary Jo Harper	Richard Winter
Karla Henrich	Ben Wood
Joann Hickman	Darlene Worsham Estate

NEW MEMBERS

The RMPL is pleased to welcome the following new members who have joined the library in the past two months.

Diana L. Neff, Longmont, CO - Collects pre-1972 worldwide used.

Olin Morrow, Aurora, CO - Collects many areas.

Mirlo and Jorge Rodriguez, Silt, CO - New collectors.

Eric Bustael, Seattle, WA - Collects German Area and Norway stamps and postal history.

Richard Winter, Colfax, NC - Collects Maritime Mail.

Don Palazzo, Foxboro, MA

CLUB PROGRAMS

Stamp Clubs	September, 2013	October, 2013
Aerophilatelist Club 2nd Saturday, even numbered months at RMPL; 11:30 a.m.	No meeting.	To be announced.
Araphahoe Stamp Club 3rd Wednesday, Southglenn Library, 6972 S. Vine, Centennial; 7:30 p.m.	Annual picnic.	To be announced.
Aurora Stamp Club 1st Wednesday at RMPL; 7 p.m.	1971 British Strike Mail: An Update. Sergio Lugo.	Program by John Sinski.
Boulder Stamp Club 4th Wednesday, Frasier Meadows Retirement Community, 350 Ponca Place; 7:00 p.m.	Ryukyu Islands.	Semiannual auction. All are welcome.
Cherrelyn Stamp Club 2nd Monday, 1st Presbyterian Church 3500 S. Logan; 7 p.m.	Final preparation for CHERPEX and Show and Tell.	1971: British Strike Mail, an Update by Sergio Lugo.
Denver Postcard Club 2nd Thursday at RMPL, 5:30 p.m.	Postcard dealers will discuss changes in the hobby and hot areas of collecting.	Rhonda Beck will provide a postcard tour of Downtown Denver historic Hotels.
Germany Stamp Club 2nd Wednesday at RMPL; 7 p.m.		
Great Britain & Commonwealth Collectors Club 3rd Sunday at RMPL; 2 p.m.		
Longmont Stampers 3rd Thursday, Bethlehem Lutheran Church, 1000 15th Ave.; 7 p.m.	Copernicus on Stamps by Van Jennings.	Club auction. Everyone welcome.
North Suburban Stamp Club 2nd Thursday Friendship Hall, Cimarron Village, 12205 Perry St., Broomfield; 7 p.m.		
Scandinavian Collectors Club 1st Saturday at RMPL; 10 a.m.	World War II Censored First Day Covers of Sweden by Alan Warren	Semiannual auction. All are welcome.
Mexico-Latin America Study Group 2nd Saturday at RMPL; 10 a.m.	To be announced. Program suggestions from members are welcome.	Don't forget your show and tell items.
TOPIC Stamp Club 1st Saturday at RMPL; 1 p.m.	Sledding on Stamps by Don Beuthel.	
West Side Stamp Club 3rd Tuesday, 6100 Field St.; 7:30 p.m.	Show and tell and good philatelic conversation.	Stamp mixtures available free for the pickin'.



Hours: Monday, Tuesday, Wednesday, Friday, Saturday 10 a.m. - 4 p.m.
Thursday 2 - 8 p.m.. Closed Sundays and Holidays. Phone: (303) 759-9921

Meeting times and places sometimes change. It is best to call the library or the club to confirm the place and time. A calendar of reserved club times is kept by Operations Manager, Don Beuthel, at the library. Clubs should check the calendar regularly and notify Don of any changes or updates at (303) 755-9328. All requests to reserve meeting time and space other than those listed here must be approved and scheduled by Don well in advance.

SEPTEMBER 2013

Aug 31 - Sep 2 - Closed, Labor Day Holiday

Sep 4 - Meeting - Aurora Stamp Club
6:30 p.m. trading, 7 p.m. meeting

Sep 7 - Meeting - 10 a.m.
Scandinavian Collectors Club

Sep 7 - Meeting - 1 p.m.
TOPIC - Topical Philatelists in Colorado

Sep 11 - Meeting - 7 p.m.
Denver Germany Stamp Club

Sep 12 - Meeting - 6:30 p.m.
Denver Postcard Club

Second Saturday at the RMPL

Sep 14 - 9 a.m.
Program by Joe Lambert
"Mysteries of the Washington Franklins Revealed"

Sep 14 - Meeting - 10 a.m.
Mexico/Latin America Study Group

Sep 19 - Meeting - 7 p.m.
RMPL Board of Directors
All members are welcome!

Sep 21 - Meeting - 9:30 a.m.
Metro Denver Young Stamp Collectors Club

Sep 15 - Meeting - 2 p.m.
Great Britain & Commonwealth
Collectors Club

Sep 23 - Meeting - 7:30 p.m.
Rocky Mountain Stamp Show Committee

Sep 27 - 28 - CHERPEX Stamp Show, opens at 10 a.m.
Jefferson County Fairgrounds

OCTOBER 2013

Oct 2 - Meeting - Aurora Stamp club
6:30 p.m. trading, 7 p.m. meeting

Oct 5 - Meeting - 10 a.m.
Scandinavian Collectors Club

Oct 5 - Meeting - 1 p.m.
TOPIC - Topical Philatelists in Colorado

Oct 9 - Meeting - 7 p.m.
Denver Germany Stamp Club

Second Saturday at the RMPL

Oct 12 - Meeting - 9 a.m.
Program by Tom Suprenaunt
"Ryukyu Postal Stationery under U.S.
Administration: 1947-1971"

Oct 12 - Meeting - 10 a.m.
Mexico/Latin America Study Group

Oct 12 Meeting - 11 a.m.
Rocky Mountain Aerophilatelists

Oct 19 - Meeting - 9:30 a.m.
Metro Denver Young Stamp Collectors Club

RMPL Stamp Sale

Oct 19--Bulk/ Large Lot Auction
10 a.m. - supplies and covers
1 p.m. - stamps, bulk and large lots

Oct 20 - Meeting - 2 p.m.
Great Britain & Commonwealth
Collectors Club

Oct 24 - Meeting - 7:30 p.m.
Rocky Mountain Stamp Show Committee

Oct 26 - Meeting - 9:30 a.m.
Postmark Collectors Club

Scribbings is published bimonthly by the Rocky Mountain Philatelic Library, Ron Mitchell, Editor, 2038 S Pontiac Way, Denver, CO 80224. The Rocky Mountain Philatelic Library is a chartered Colorado nonprofit corporation and an IRS designated 501 (c)3 charitable organization. Membership subscriptions over that for the regular membership, and donations of appropriate philatelic materials, are deductible for U.S. income tax purposes.

RMPL BOARD OF DIRECTORS

President: Sergio Lugo - Operations Manager: Don Beuthel - Vice-President: Jim Kilbane
Corresponding Secretary: Roe Emery - Recording Secretary: Paul Lee - Treasurer: Bob Blatherwick
Directors: John Bloor - Steve McGill - Dalene Thomas - David Weisberg. Director Emeritus: Don Dhonau