

Scribblings

...from the Rocky Mountain Philatelic Library



Ronald Hill, Editor

Ellengail Beuthel, Librarian

Vol. 20 - No. 1
www.rmpldenver.org

2038 South Pontiac Way, Denver, CO 80224
303.759.9921

January - February 2012
Email - rmpl@qwestoffice.net

**ELECTION
ISSUE
VOTE NOW
BALLOT ENCLOSED**

IN THIS ISSUE

Walk Down Memory Lane.....1-2
 Candidates.....3-7
 Latvian Banknote Stamps.....8-9
 Postal History is Where You Find It10-11



Country Lot Sales10
 The State of the Library.....12
 November Board Meeting13
 Periodical Pickin's..... 13
 The Prez Observations.....14
 Shows & Events.....14,19
 Puzzle Page.....15
 What's New on the Shelves.....16-17
 OLLI Programs 2012...17
 New Members 18
 Donations18
 Closed Albums18
 Gold Medal Book18
 Second Saturdays.....19
 Calendar.....20

“Walk Down Memory Lane”

A look back at my early years in Belgium with the help of a post card collection.

By *Tonny van Loij*

When there are times that it is hard to find suitable materials at the stamp shows for my collection, I will always turn to old post cards. Having lived half of my years in Belgium, St. Jozef and Antwerp, and had the opportunities to travel extensively throughout Europe, I decided to start a collection of old post cards from places that were important, interesting and dear to my heart.



Bridge at Bruges



I will try to paint a little picture of old times in my homeland. Most people have heard about Antwerp, Brugge, Gent, etc. These larger cities go back centuries and all had a Beguinage.

The Beguinage “ De Wijngaard “ (the vineyard) in Bruges is a little group of houses where beguines lived during the last 7 centuries. It was founded in 1245 by the Countess of Flanders, Margaretha of Constantinople. Philip the beautiful, of France, placed the Beguinage under his own rule. Visitors enter the place via a bridge over the canal. It is located right next to the “Minnewater” (Love Lake). The largest and most impressive house is in the left corner of the garden. It was here that the “grootjuffrouw” or ‘grand-dame’ lived. It was she who ruled over the beguinage.

What is a Beguinage’?

During the 13th Century more people became attracted to a purer and more mystical form of religion. However, most of the women entering the convent were never married or widowed. This last group was so large because of the constant wars that were going on in that period. Those women, when entering the Beguinage, lived like regular nuns and made vows of obedience

Continued on page 2

“Walk Down Memory Lane” *Continued*

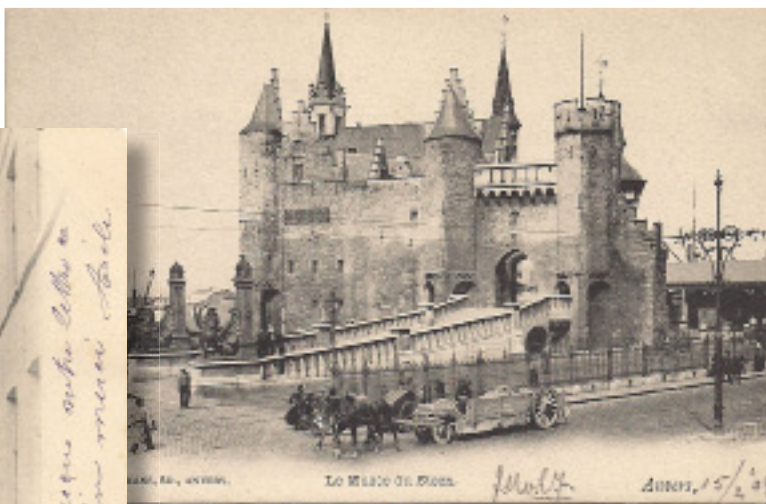
and chastity, but not the vow of poverty and devoted their lives to help the poor and sick . Some of them became servants of the Catholic churches and helped by cleaning the church, doing the laundry for the priest, etc. Men were not allowed in the compound and at night the gates were locked. Very often girls from rich and noble families joined the beguine community and were very often chosen to become Grand Mistress of the Beguinage.

These days there are practically no beguines alive anymore and the houses are rented out to tourists. The most important ones are Bruges, Gent, Lier, Turnhout, Hoogstraten en Diest (the last four are in the vicinity of my old stomping grounds, are registered by UNESCO. I spent many hours in this quiet oasis, away from the daily grind and noise.

The second part of my memory lane is Antwerp. (see cards on right) This is where I moved in the early 50s and was overwhelmed coming from a hamlet of 275 inhabitants. The origin of Antwerp goes back to the 4th century. In the time before iPhones, Email, Facebook, Twitter, etc. I would spend hours walking through “Old Antwerp” with a history book and discover the old buildings, who occupied them and what guilds had built them. Even today, when I visit my family, I will still walk through the old streets and quarters and reminisce about the years that Belgium and Europe were recovering from WWII. In my late teens I worked in the port of Antwerp and discovered that many of the old implements (early 1900’s) were still used, horse drawn flat beds, etc.

Take a look at the scans of the post cards, close your eyes and try to imagine how the world has changed and ask, are we better off?

Next time I will write about the origin of the name Antwerp, the real explanation and the myth. If people have an interest in a program about this collection, please contact me.



Above: views of Antwerp (Anvers)

Left: Bruges

~~ RMPL ELECTIONS ~~

It's that time again. The current three year term for all RMPL officers and Board of Director members expires on March 1, 2012. Please take time to read the candidate statements in order to be an informed voter.

For members of the Rocky Mountain Philatelic Library, a ballot and return envelope is enclosed with this issue of *Scribblings*. A ballot box will be available at the library for you to deposit your ballot, or you may return it by mail. In either case, PLEASE seal the ballot envelope before returning it and do not include any other correspondence intended for the library. **Ballots will not be available at the library.**

Ballots must be received by 4:00 PM on Tuesday, January 31, 2012 in order to be counted.

PLEASE TAKE ADVANTAGE OF THIS OPPORTUNITY TO VOTE IN THE LIBRARY'S ELECTIONS.

~~ CANDIDATE STATEMENTS ~~

FOR PRESIDENT...

SERGIO LUGO

RMPL Member Since: 1993

Current and/or Previous positions at the RMPL:

Incumbent President 2009-2011; Founding member # 4;

Periodicals Manager: 1995 - 2005; Sales Manager: 2003 - 2008



Three years ago, I ran for the office of President of the RMPL. I'm still doing that – so I guess you can consider me a “lifer”.

And in those three years, a number of things have happened – most notably the addition of the 2048 S. Pontiac Way Building and the gardens.

But a number of other things have transpired, which I won't get into here. What I will get into is this – I believe the RMPL has a bright and growing future, that we will continue to attract new members, undertake new activities, and that I will continue to be (if reelected) as responsive as I possibly can be to all of the issues that are raised in the management and operation of the RMPL.

I hope that this will be sufficient to entice you into keeping me in office as your RMPL President.

FOR VICE-PRESIDENT... **JIM KILBANE**



RMPL Member Since: 1993

Current and/or Previous positions at the RMPL:

Incumbent Vice-President; Thursday Night Volunteer;

Second Saturday Program Chairman

I am currently the Vice-President of the RMPL. I have been responsible for the Second Saturday programs. I have been Vice-President for more than twelve years. I have also been President of: ROMPEX, Denver Stamp Club, Cherrelyn Stamp Club, Aurora Stamp Club, Collectors Club of Denver and the Des Moines Stamp Club. I have also been President of the Trans-Mississippi Philatelic Society. I am the current President of the Colorado Postal History Society. I have collected stamps for over 35 years. My collecting interests are varied. I focus mostly on Colorado and Iowa Postal History. The RMPL is in for some exciting times. I feel the general membership should take more part in the future of the library.

continued next page

~~ OFFICER CANDIDATE STATEMENTS ~~

FOR RECORDING
SECRETARY...



PAUL LEE

RMPL Member Since: 2006

Current and/or Previous positions at the RMPL:
Incumbent Recording Secretary

Like many members, I collected stamps as a kid; moved on to other things; then rediscovered the hobby as an adult. Special interests include U.S., Canada, and recently Bulgaria. I also collect stamps and postal history items related to the National Park Service, and I am currently working on a postal history of the NPS. I worked for the NPS for over 40 years and retired in 2010. Although I worked in several parks, my last job as a planner involved a great deal of writing which I think helps to qualify me for the position of recording secretary. I am a member of APS, and locally I belong to the Arapahoe Stamp Club and the Collectors Club of Denver. As a RMPL volunteer, I am in charge of library sales on ebay, and I recently took on the job of managing the library's special collections.

FOR CORRESPONDING
SECRETARY... **DON DOHNAU**



RMPL Member Since: 1999

Current and/or Previous positions at the RMPL:

Incumbent Corresponding Secretary; Member, RMPL Young Stamp Collectors Leadership Team; Monday front desk volunteer; Rocky Mountain Stamp Show Committee, Youth Programs.

I look forward to serving RMPL again as Corresponding Secretary and in the other positions mentioned above. I continue to learn about our hobby from the membership and I think I have fulfilled my duties well. As I get to know more and more members of RMPL I realize how diverse and knowledgeable this community is. I will continue to use care and promptness as I respond to donors, and my best judgement in other RMPL business that I may be involved in. I look forward to a time when each member has at least one volunteer responsibility, so that all may share in the work of the whole.

FOR OPERATIONS
MANAGER...



DONALD G. BEUTHEL

RMPL Member Since: 1993

Current and/or Previous positions at the RMPL:

Founding Member; Past President - Incumbent Operations Manager and Friday Morning volunteer

Nationally – Member of APS, ATA, Sports Philatelists, Machine Cancel Society – Previously APS Accredited Judge, ATA Accredited Judge, and Past ATA President.
Locally – Member of Aurora Stamp Club, TOPIC, Colorado Postal History Society, holding offices in each. Past RMSS Committee member for 20 years and President 2 years. As one of the founders of the RMPL; President for the first 10 years and Board Member since the beginning, I have a great interest in the future of the library. In the recent past the RMPL has made great progress and I would like the opportunity to work to see that that progress continues. In the upcoming election it appears that there might be many changes of the RMPL Board. I would like to be re-elected as Operations Manager to help insure that there is some continuity with continued progress. Your vote would be greatly appreciated.

~~ OFFICER CANDIDATE STATEMENTS ~~

FOR TREASURER...

BOB BLATHERWICK



RMPL Member Since: 1993

Current and/or Previous positions at the RMPL:

Incumbent Treasurer of the Rocky Mountain Philatelic Library

Having been Treasurer for the past many years, it has been my responsibility to develop the current procedures for handling our funds and accounts, as well as handling our Federal Income taxes and our Colorado Sales Tax requirements.

I was a member of the founding committee of the Library and have served on various committees since it's inception.

I am actively involved in our Church -- St. Luke's Episcopal and I have been the Treasurer of the Church for the past eight years.

I am a member of the Colorado Postal History Society with interests in Denver County, Harmon, and Montclair. My main stamp interest is Bermuda.

Because of my experience in this position, I feel that I am well qualified to be the

Library Treasurer and I would appreciate your vote.

FOR TREASURER...

TIM HEINS



RMPL Member Since: 2002

Current and/or Previous positions at the RMPL:

Founding Advisor to Metro Denver Young Stamp Collectors Club, (now RMPL Youth Collectors) in 2005; Treasurer of RMPL Youth Collectors six years; Finance Committee for Building Purchase 2010.

I have been a stamp collector since my youth with a period of inactivity during my early adulthood. I am a member of the American Philatelic Society.

Having worked as a CPA for over 30 years I am currently retired. My prior accounting work for non-profit organizations includes my tenures as Treasurer for my church and my Home Owners Association.

As Treasurer of RMPL I would maintain the accounting records in an accurate manner using modern accounting software. Also I would seek to expand the current sources of revenue and I would pursue new sources of revenue. I would manage surplus RMPL funds in such a method which would provide the highest rates of return while maintaining the safety of those funds. I would implement the recommendations of the outside auditors.

I am seeking a volunteer position in the RMPL where my expertise can be utilized.

continued next page

VOTE NOW - BALLOT ENCLOSED

A ballot box is available at the library for you to deposit your ballot or return it by mail.

PLEASE seal the ballot envelope before returning it and do not include any other correspondence intended for the library.

Ballots will not be available at the library.

Ballots must be received by 4:00 PM on Tuesday, January 31, 2012 in order to be counted.

~ BOARD CANDIDATE STATEMENTS ~

FOR DIRECTOR...

JOHN BLOOR



RMPL Member Since: 1993

Current and/or Previous positions at the RMPL:

Thursday afternoon volunteer; On-line catalog manager; shelf-reader; member, Technology Committee; New Acquisitions columnist for Scribblings;

The Rocky Mountain Philatelic Library is one of the premier philatelic libraries in the world. It has become a major resource for collectors in Colorado and around the globe. I want to help with and to be part of its continued growth. In addition to my work with the RMPL I am an officer in the Aurora Stamp Club and in the Collectors Club of Denver. I have had several positions in the Rocky Mountain Stamp Show including four years as its president. I am on the Board of the France and Colonies Philatelic Society and for several years was the new issues editor for the *China Clipper*.

My collecting interests include France, Canada, US, China, United Nations, early world airmail stamps and postal history, and cinderella stamps. I have published, exhibited, and given talks on several subjects related to these interests.

FOR DIRECTOR...

DAVID CAPRA



RMPL Member Since: 1993

Current and/or Previous positions at the RMPL:

Saturday afternoon volunteer

I have been a stamp collector for 60 years, tracing my interest to the stamp dealers of 1940's Denver. I became a successful businessman in auto parts and real estate, continuing my interest in worldwide philately, covers, aerospace and Mexican philately. I was a part time dealer.

I have supported the RMPL since its inception, having provided the space gratis that was the RMPL's first home. I supported the purchase of 2038 S. Pontiac, but opposed acquiring 2048 S. Pontiac. My reasons were many, centering on anticipated future price reductions and membership growth. Since the purchase, membership has not declined and management of the two properties has ameliorated my concerns.

Having witnessed the Library's operation, I am running for office as I feel that my collecting and business talents can be used by the Board in managing the library as it enters its third decade.

FOR DIRECTOR...

GREG FRANTZ



RMPL Member Since: 1993

Current and/or Previous positions at the RMPL: none

My vision for the library is for the efficient use and development of our current resources.

1. I see the challenges as keeping and expanding the pool of our volunteer staff.
2. To be ever mindful of the best use of our available space and to perfect its organization.
3. To listen to and implement ideas and projects brought up by members in the interest of the library's statement of purpose and philatelic community.

Here is a short history of my involvement in philately:

Member and office holder of many of the local stamp clubs. An initial member of the Rocky Mountain Library. Past president and member of ROMPEX since the 1980's. Initiator of the exhibits workshops. Membership in national organizations; APS since 1975, TMPS Officer and member of SCC including Nordia 2001. A local and APS judge since 1992.

~ BOARD CANDIDATE STATEMENTS ~

FOR DIRECTOR...



STEVE MCGILL

RMPL Member Since: 2005

Current and/or Previous positions at the RMPL: none

If elected, my objectives as an officer of RMPL would be as follows:

- Continue to develop activities that increase the value and desirability of membership
- Promote reasonable expansion of library philatelic holdings
- Seek opportunities to increase integration into national/global philatelic networks
- Maintain a fiscally responsible approach to budgeting

My interests are predominately in the stamps of Great Britain & Commonwealth, Canada, United States and French Antarctic. I specialize in the British Machin series of which I exhibit frequently on a national basis.

I believe that the best way for philately to remain sound occurs when individuals participate at the exhibition, research, publishing and club management levels. I am currently President of the Great Britain Collectors Club with approximately 225 members and publisher of the quarterly, *Chronicle*. I am a member of the international organizations, RPSL, GBPS, AARP and APS. I am also the current treasurer of the local Great Britain & Commonwealth Collectors Club of Denver.

FOR DIRECTOR...



DALENE THOMAS

RMPL Member Since: 1993

Current and/or Previous positions at the RMPL:

Incumbent Board Member- Historian, volunteer and Director of Social Events.

It has been my pleasure to serve on the board of directors of the RMPL. We are fortunate to have this resource in our philatelic community. From beginner collector to advanced exhibitors and judges, the RMPL provides support to all philatelists. It is important to have well qualified and dedicated members serve on the board to insure its future success.

I have served as President of the American Topical Association and am currently first vice-president. I am the founder, president and editor of the Lighthouse Stamp Society. I have served on the board of the (ISWSC) International Society of Worldwide Stamp Collectors. I am also a member of APS, AAPE, AFDCS, and UPSS.

Locally I am a member of Collector's Club, Colorado Postal History Society, and TOPIC. I collect thematics, postal stationery, and Trinidad, CO postal history. I am also an exhibitor having entered six different exhibits in various shows.

FOR DIRECTOR...



DAVID WEISBERG

RMPL Member Since: 1993

Current and/or Previous positions at the RMPL:

Incumbent Board Member; Auction Manager since 2007

I have been a stamp collector for over 60 years with a focus on U.S., Canada, Australia, Switzerland, Japan and U. N. I have been an APS member for 30 years and am also a member of other national and local societies and clubs. I am currently treasurer of the Collectors Club of Denver and secretary of the Aurora Stamp Club.

For the past three years I have been a director of the RMPL. In this capacity I was involved in raising money for the new building and helped to generate about \$100,000 in pledges and donations. I have also been auction manager for the past several years and have helped raise more than \$70,000 for the Library.

One area I am particularly interested in is in helping collectors prepare their heirs to dispose of their collections. I have created a presentation that has been given a number of times.

Latvian Banknote Stamps

By Paul M. Holland

Severe paper shortages following World War I led to the first Latvian stamps being printed on a variety of unusual paper types. This included stamps printed on the unfinished backs of German military maps, partially finished banknotes of the warring Soviet and Bermond-Avalov armies, lined writing paper, and thin pelure or "cigarette" paper.



The Rocky Mountain Philatelic Library has a superb full sheet of the 1918 Latvian "map" stamps (see next page) donated by Bob Brown that can be seen in a special hanging display. This includes 228 stamps in 12 rows of 19, an unusual arrangement designed to maximize the number of stamps printed per map sheet. On the back this shows a 1:100,000 scale German infantry map from western Russia designated as L16 in the map series, one of some 65 different maps used in printing Latvian stamps. These maps use the Ferro system of longitude dating to Claudius Ptolemy (90–c. 168 AD), where Ferro (Spanish Hierro) in the Canary Islands is the prime meridian since it was at the western edge of the known world.

Perhaps even less familiar to stamp collectors at the RMPL are Latvian "banknote" stamps, the focus of this short article. Unlike the map stamps, which are both imperf and perforated versions of Latvia's first stamp (Scott #1 and 2), some 32 different Latvian stamps of 1919-1921 exist printed on the back of three different types of partially finished sheets of banknotes.

These "banknote" stamps include regular printings for Scott #63, 68-69, and B1-B12, plus stamps with inflation surcharge overprints for Scott #83-85, 94-99, and B13-B20. Basic design types for these stamps include the One Year of Independence issue, Latgale Relief issue, and "Mercy" Assisting Wounded Soldier semi-postal issues, as shown above (Scott #63, 68, B10 and B4). Partly finished sheets of banknotes confiscated at the printing office in Riga were used for printing these stamps. As in the case for map stamps, the printing layout was optimized for the available paper. For example, the One Year of Independence issue was printed in sheets of 78 stamps (6 rows of 13), and the semi-postal issues in sheets of 104 stamps (13 rows of 8).

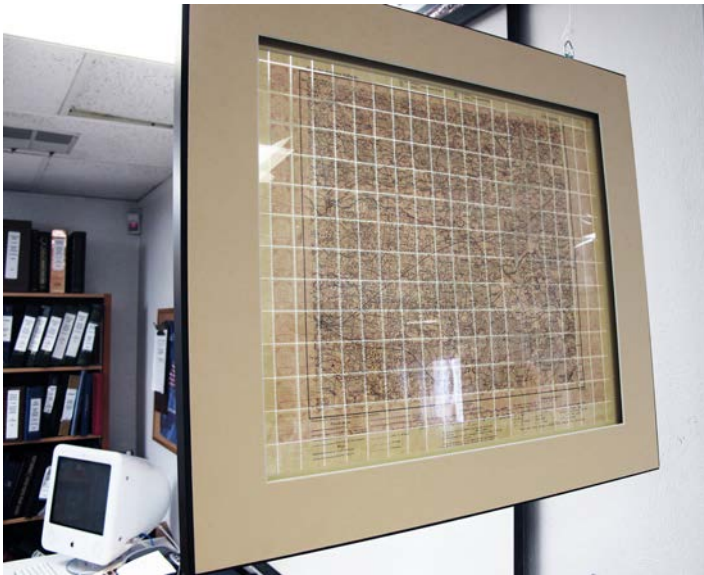
These banknote stamps reflect the turbulent history of Latvia. The independence of Latvia was declared in Riga on Nov. 18, 1918 as the German army prepared to withdraw from western Russia at the end of World War I. A Soviet army, backed by the Bolsheviks then took over most of Latvia. Soon afterwards, German-backed forces, which included the Latvians, regained much of the lost territory. Further fighting between a confusing variety of factions eventually led to the defeat of both the West Russian Volunteer Army under Bermond-Avalov who was an anti-Bolshevik adventurer, and the remnants of the Soviet forces at Latgale, allowing Latvia to be established as an independent state.

A fully printed Bermond-Avalov 10 mark banknote of the West Russian Volunteer Army (Pick S228) can be seen on the backside of a large corner block of 16 of Scott B4 (to the right). This is printed in German and denominated in marks, stating that it can be redeemed either for marks or other currency until 1 April 1920. Unfortunately for the holders of these banknotes, by this time the Bermond-Avalov army had been defeated and driven from Latvia.

Some banknotes used for stamps were only partially printed, such as the 5 ruble



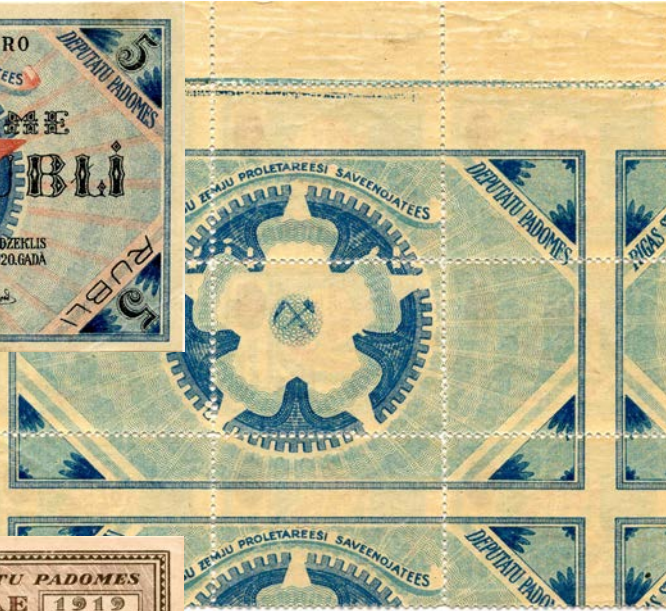
(Continued next page)



RMPL Latvian "Map" Stamps display (see text).



Riga Workers Council Banknotes
5 Ruble Banknote (above)
At right, partially finished sheet,
printed and perforated with
stamps on reverse.



banknote of the (Soviet) "Riga Workers Council" shown in a marginal block of 12 of Scott #84 at the left. This can be compared with a fully printed banknote (Pick R3) in the insert, showing that only the blue color was printed, with red and black omitted.

Comparison of the 10 ruble Riga Workers Council banknote (Pick R4) with the backside of a marginal block of 4 of the imperforate Scott B11, shows that these stamps were printed on the blank side of otherwise fully printed sheets of 10 ruble notes. Careful study suggests that four separate printing impressions were used, with red, green and dark brown, followed by light brown for the background pattern.



10 Ruble Banknote (left)
Below, banknote sheet, with stamps on reverse.



I've found these imperforate stamps to be scarce in blocks, and while I have other blocks of 4, this block (hinge remnant and all) best shows the banknote. I also have singles of B10 and B12 that show incomplete printing of the 10 ruble banknote on the back: the first stamp missing both red and light brown printings; and the second missing light brown with the dark brown printing of the hammer & sickle and lettering offset to the left.

When Latvian banknote stamps were originally produced, there was very strong interest in stamps of the Great War and newly emerging countries in post-war Eastern Europe. Consequently philatelic sales were strong, especially to German and Swedish stamp dealers, and this helped fund the fledgling Latvian government. Today, Latvian banknote stamps provide highly unusual philatelic/ numismatic items for the collector of worldwide classics, and in spite of modest catalog values they can present a collecting challenge, especially for some of the later surcharged stamps and for MNH blocks that display the full banknote on the back.

Postal History is Where You Find It and who you ask

By Sergio Lugo

No, this isn't an article about covers, rates, or when a certain post office opened (or closed).

It is an article about stamps. Well, it can be postal history if we take a little bit broader view of what we mean by history!

And in this case, I'm talking about the history surrounding Korea and the 1950's war and a recent donation by RMPL member Art Weaver of Parachute, Colorado. Art gave us a large glassine containing three sheets of stamps, which I quickly determined as North Korean (see Figure 1) and Japanese (see Figure's 2 and 3). Art, helpfully, included a note on the three remnant pieces. It read: *"I picked these up from rubble on the floor of the central post office in Pyongyang, North Korea. Don't know what they are. May be of interest to someone."*

The first stamp was a dead giveaway as North Korean (Figure 1: Scott #28;) with the North Korean flag and its unique star in circle on a field of stripes. After repeated searching of the Scott's catalog under Japan and the Democratic People's Republic of Korea, I could not find anything on the two other issues – which I took to be stamps of Japan, due to their "sen" denominations. But the characters on the stamps struck me as not being Japanese, but rather Korean, and the absence of the imperial chrysanthemum suggested a stamp of non-Japanese origin. That left me with the conclusion that probably Figures 2 and 3 were, in fact, local issues of Korea, produced during the Japanese reign.

Art had served with the United States Army during the Korean War and the counteroffensive following the repulse of the North Korean invaders of South Korea in 1950. During that counteroffensive, he had "liberated" these North Korean stamps from the floor of the Central Post Office in Pyongyang. (Editor's Note: The counteroffensive

began with the landing of United Nations troops at Inchon on September 15, 1950 and the subsequent capture of the North Korean capital, Pyongyang, on October 19.)

Perhaps these stamps spoke of the history of Japanese-Korean relations over the prior 55 years, going back to the 1890s. Scott # 28 is a 1950 issue commemorating the 5th Anniversary of Korea's liberation from Japan in 1945. Japan's rule had begun in 1895. However could the other stamps be explained in the context of the 50 years of Japanese overlordship, or not?

Still, postal history is where you find it even if it is found on the floor of a post office in North Korea. But the answer is not where it was found but rather, who do you ask when you don't know the answers.

The mystery of Art Weaver's unidentified stamps that he had "picked up" in Pyongyang in 1950 was solved when I asked Travis Searls, webmaster for the RMPL and a knowledgeable collector of East Asian philately. By way of the internet and e-mail, he contacted his friend in England, Simon Watt, who also has an interest in East Asian philately, and Simon was able to identify them immediately.

The two stamps are Japanese revenue stamps issued in 1935 and are known as Chungchong-Namdo prefectural stamps, #'s 1 and 2 in the *Barefoot Asia Revenue Catalog*. And, surprisingly, they have a higher value than your typical stamps of the period.

What they were being used for in Pyongyang is unknown, but the revenue catalog notes that Japanese revenues were used without distinction in Korea (and apparently were still being used in North Korea five years after liberation from Japan). No special general revenue stamps were issued by Japan for use in Korea during Japan's 50 year overlordship of Korea.

Country Lot Sale – February 11, 2012

Enclosed in this Scribblings is the complete listing of the country lots and prices for this sale.

In the process of putting together the recent Bulk Auction, we ended up with many more country-specific lots than that auction could handle. These lots have not been cherry-picked and some contain premium items.

The RMPL will hold a fixed price sale of these lots starting on Saturday, February 11, 2012. Most of the lots are priced from \$20 to \$100 with a few higher. The sale is on a first come basis and the lots will remain on sale at the initial stated price until they are all sold. Our estimate is that these prices are less than 20% of catalog and in some cases, much less.



Figure 1: 1950
(North Korea Scott 28)

Figure 2:
1935 (1.5 Sen; Yellow);
Japan, #1 Barefoot Asia
Revenue Catalog

Figure 3'
1935 (10 Sen Red);
Japan, #2 Barefoot Asia
Revenue Catalog



STATE OF THE LIBRARY

I thought I'd have some fun with our membership in my *State of the Library* article by overloading you with numbers. The numbers are mind boggling! If not exact, forgive me for not getting them to the absolutely exact number.

- 1** You are the most important member of the Library;
Thank you.
- 1** more gold medal to win by Mexico's Denver Printing of 1914
(see 2 and 5)
- 1** University of Denver volunteer who has been magnificent
- 1** digitization project yet to be launched;
- 2** books published by RMPL (see 5 below)
- 2** years since purchase of additional building. For Pledge
commitments and donations since see 165, \$12,000
and \$87,400).
- 4** Mac Computers and 4 PC computers operate at the RMPL
(see 8 below)
- 4** volunteers comprise Judaica working group
- 4** auxiliary libraries are now housed at the RMPL, including
the Britons, Czechs, Scandinavians, and postal
stationery reference specialists
- 5** gold medals earned by 2 RMPL books
- 8** philatelic libraries now comprise the Union Catalog;
the RMPL was the first guinea pig.
- 8** computers operate at the RMPL
- 8** average work visits per volunteer in 2011
- 9** average visits by individual RMPL members in 2011
- 11** foreign members
- 15** years in our present location
- \$15.00** basic membership level by 30% of our membership
(see \$21.50 below)
- 16** collections comprise our SPECIAL COLLECTIONS
holdings begun in 2011
- 16** postal scales are in our display case.
- 18** years since Tiffany Fund turned us down for funds since,
in their words, the RMPL would never amount to
anything more than a "Club Library"
(see 11 above and 130 below)
- 18** years since the opening of the first RMPL location.
- 19** volunteers comprise our Stamp Program
- 20+** youngsters were at our last youth activity in December
- 20** years since the formation of the RMPL Foundation
- \$21.50** for the annual cost of SCRIBBLINGS and
mailed announcements
- 28** Parking slots
- 32** volunteers staff our front desk during the course of a week
- 70+** volunteers manage the RMPL, as of our present count
- 78** out of state visitor sign-ins this year
- 100** titles in our Antiquarian Periodicals prior to 1910
- 108** issues of SCRIBBLINGS since our opening;
anyone willing to index?
- 130** U.S. members outside of Colorado.
- 132** first time visitor sign-ins in 2011
- 165** members contributed to building donations
and building pledges since 2009
- 360** active members in Colorado

400+ items are awaiting "expertization"
\$402 was our first insurance premium in 1996
(see \$4,200 below)
\$450 was our utility bill in 1993

500⁺ active members for three consecutive months
for the first time in our history.
550 donation letters sent out this past year through October
600+ items were "expertized" as fakes or forgeries in 2011
970 at last count in 2011 were the total members of the
RMPL since its founding (see 500 above)
1,400+ titles are in our periodicals.
\$1,500 was the amount of our first auction realization in 1996
(see \$49,500)

1,500 auction catalogs are in our holdings
\$1,960 was the amount we collected in the first year of
stamp sales in 1997
\$1,976 comprised our 1998 first time computer expenses
(see \$5,000)
\$2,285 was our property tax in 1997
2,640 visitors signed-in in 2011
\$4,200 was our 2011 insurance premium
4,800 square feet in the RMPL's gardens
\$5,000 in expenses were incurred in our first year
of operation in 1993
\$5,000 in projected 2011 computer expenses

6,600 square feet of space in our two buildings
\$8,600 in 2011 projected utility expenses
\$8,800 comprised our income in 1993 in the RMPL's
first year of operation.

11,000 books comprise the RMPL
\$11,000 is the amount we realized in stamp sales in 2011.
\$11,100 in property tax expenses in 2011
\$12,000 building pledge amounts outstanding
for 2012 and 2013.
\$13,000 was the cost of the roof replacement
at 2038 S. Pontiac in 1993
\$28,500 was the cost of the roof replacement
at 2038 S. Pontiac in 2011
\$49,500 was the amount of our auction realizations in 2011
\$87,400 in building donations and pledge commitments
for 5 years, and reached in 3 years;
100,000 issues comprise our periodical holdings
\$104,000 projected 2011 income as of October 2011
\$106,000 projected 2011 expenses as of October 2011

\$127,000 has been paid on the new mortgage for
2048 S. Pontiac Way in only 2 years
\$170,000 is our remaining mortgage balance on
2048 S. Pontiac Way
420,000 copies have been run on our copier machine
in the past seven years

**1,000,000 handshakes and hugs to all of you from
President Sergio Lugo**

Eight Board members were in attendance; Robert Blatherwick was recovering from heart surgery. For the record items included: the next Board meeting (our annual membership meeting to which all RMPL members are invited) is scheduled for Thursday, January 19, 2012. A number of topics promise to make that meeting a long and informative one - including the annual reports by individual RMPL committees.

Ron Mitchell's *Denver Mexico Printing of 1914*, published by the RMPL, has now won its second gold medal in literature competition and will be entered into the literature competition at NAPEX 2012. All RMPL members are reminded that we have a limited supply of our gold medal winning publications, specifically 6 copies of our *Camp Genter: Colorado Ghost Town Mail* (at \$37 each) and 16 copies of the *Denver Mexico* book (at \$50 each).

Old Business topics were numerous. In light of our Treasurer's absence as noted above, a limited discussion of the RMPL's finances through the end of October was held. Complete financials for 2011 are anticipated in the first two weeks of January. The reestablishment of a building maintenance fund was discussed, with further discussion to settle the matter in January as a clearer picture of our income and expenses materializes in January. The November Bulk Lot auction proved exceptional for the Library's finances. A net of \$21,500+ was realized from the auction.

Board elections were discussed. Nominations have been received by 13 candidates for 10 RMPL Board positions. The January-February *Scribblings* will contain the 150 word statements of all nominees. Election ballots will also be included with the *Scribblings* mailing. The election will be held in January, 2012. Results will be announced in February, with those elected taking office in March.

The Great Britain Collector's Club Library/Cubicle is completed, and ready for acceptance of literature donations from Anglophiles and staffing by the local GBC³ club.

An investment strategy was discussed and approved, centering on the funds set aside for a future librarian. More will be reported on this in future meetings. Attendees at the Mauritius play had an enjoyable evening, but reactions were mixed depending on one's tolerance for a steady promulgation

of foul-mouthed dialogue. Details of the volunteer party to be held at the White Fence Farm were finalized.

New Business topics were also varied. The initial 2012 budget was presented by President Sergio Lugo. With two months remaining in the 2011 fiscal year, it appears that the RMPL's income will project out to the \$104,000 range, with projected expenses in the \$105,000 range. Based on that, and our experiences of the past several years, we are anticipating a 2012 budget of roughly \$92,000, and income in the range of \$89,000 to \$95,000. The Board is taking a conservative approach to projections of income realizations from 2012's RMSS auction and Bulk Lot auction. The budget will be finalized at the January 19, 2012 RMPL Board meeting.

The matter of plaques in memory of RMPL members to be affixed to RMSS frames was discussed. In 2006, the Board had decided not to continue paying for those plaques, but several members believe that issue should be revisited. Discussion was tabled until further word from the ROMPEX Committee on the number of plaques that have already been affixed. A committee of one (Dalene Thomas) was established to look into the matter of spelling our criteria for RMPL awards and plaques.

A discussion was held on whether the RMPL, as a non-profit organization, should endorse public policy initiatives and propositions. Several requests had been posed to President Lugo during the past political campaign season. The RMPL Board's decision was that basically we should stay neutral on all such requests.

A lengthy discussion on Special Collections was held. RMPL Board member Paul Lee has stepped forward to manage such Special Collections. He distributed a set of notes and issues which will serve as his talking points with various interested parties as he goes about specifying policy for the Special Collections program. Policy guidance should be forthcoming in future RMPL Board meetings.

The Board decided to renew its membership in the Douglas County Historical Society. The matter of an RMPL donation to the 2016 World Philatelic Show in New York was presented to the Board by President Lugo, with a decision deferred until the financial outlook of the RMPL becomes better defined after the RMSS auction in May 2012.

PERIODICAL PICKINS

El Coleccionista Ecuatoriano:

AFE: Asociacion Filatelica Ecuatoriana

There has been a Latin/South American Study Group at the RMPL for years (2nd Saturday of the month). Everything from Mexico to Tierra del Fuego (and every English, French and Dutch possession in between) is included in our discussions. Several years ago I stumbled upon the website of the AFE, and began looking at it thoroughly as its images were distinct, its articles interesting, and its coverage of the hobby throughout the world wonderful. I began forwarding the website to fellow RMPL members, and fortunately a translate feature found on the web enabled all who were not conversant in Spanish to read it in English.

Now, we have begun receiving regularly the AFE's journal entitled *El Coleccionista Ecuatoriano*. We have a few past issues, but not enough to note in terms of individual issues. In its 76th year, the journal is published annually. We are now in receipt of No. 76, in the last quarter of the year.

The AFE maintains a very active philatelic club/organization in Quito, Ecuador from all appearances on the internet and its blogs. The journal provides a very colorful, in depth presentation of Ecuatorian stamps throughout its pages.

Its members apparently are strongly dedicated to philatelic and postal research; themes which resonate throughout its pages. Those number approximately 40 in toto, all of which are in Spanish. The latest includes articles on the first issue of Ecuador, their rarity and value; commemorative stamps of the 200th anniversary of the declaration of independence; a portrait of a prominent Ecuatorian philatelist; the overprinted 1945 issues; tokens of service; notable issues of Ecuador, and new issues and cancellations of Ecuador in the past year. The journal contains advertising for various dealers of Ecuatorian and Latin American material. Their e-mail is boletinafe@gmail.com

The Prez' Observations

Three "incidents" this past month reminded me of the symbiotic nature of our library. The RMPL's stamp program began only about 5 years after the founding of the library. Until then, the library was just a repository for books, periodicals and research materials. Since then we have considerably expanded both our stamp program and our book and periodical holdings.

And what does that have to do with anything? Well, most obviously, neither the stamps nor the books and periodicals stand isolated from each other. Rather, depending on your individual use of the library, they are complementary to each other. One reinforces the other - in providing actual specimens of postage, while the other provides the articles, periodicals and clippings that better help us understand the physical specimens.

Of course, that can only occur if you're here on site; those of you who are forced to use the internet and our on-line catalog can only tap into the reference works and books that we have, but not the stamps and postal history. The solution - move to Denver!!! just kidding for those of you in Argentina, Italy, Great Britain, Canada, or the far corners of the U.S..

And the three incidents to which I referred in the opening sentence? The first that comes to mind was a

new collector's interests in Christmas on stamps; she was able to be introduced very quickly to the topic of religion on stamps through our topical holdings, as well as the periodical COROS.

A second incident involved stamps liberated from the Central Post Office in Pyongyang, North Korea in 1950. The physical specimens themselves led us on a merry chase through Japanese and Korean catalogs, and eventually to *Barefoot Catalog of Japanese Revenues* of the 1930s.

Finally, a topic that evolved from a discussion of postal history that began with a cover transported in 1901 from Porto Rico to Germany, and the inexplicable markings on it. Investigation led from the *Official Railroad Guide* on the shelves of the library, to a self published Porto Rico album, to steamship sailings in the Railway Mail Library of Virginia.

All three instances point out how the dynamics of stamps and covers as research initiatives are made possible by the presence of both books and primary source material. And I do hope that all of you can exploit all elements of the RMPL library in your pursuits.

Sergio

SHOWS & EVENTS



CHERPEX Stamp Show

presented by the Cherrlyn Stamp Club

Friday, January 6, 2012 - 12:00 noon-5:00 pm

Saturday January 7, 2012 - 9:00 am-5:00 pm

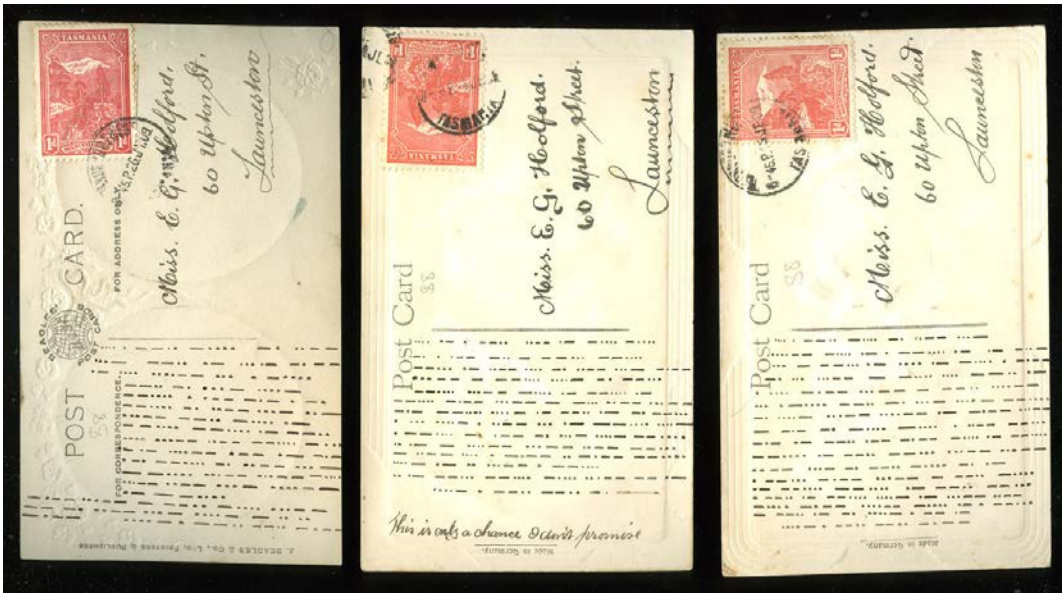
Jefferson County Fairgrounds, Golden, CO

EXHIBITS RETURN !! - THIRTY (30) FRAMES TOTAL

Accredited Judges and Awards

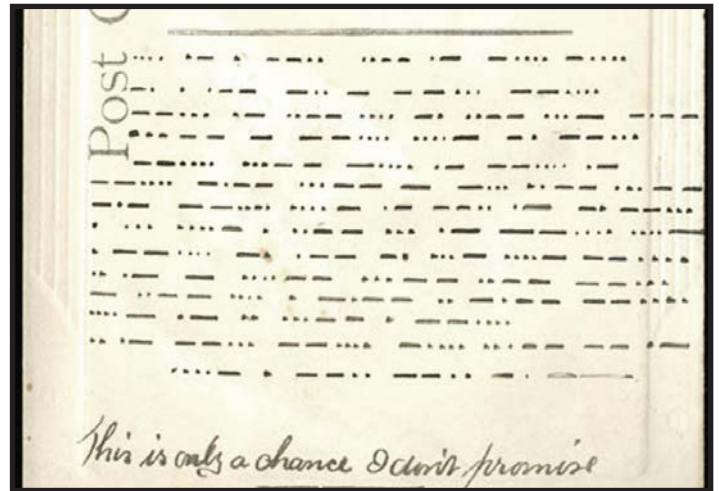
29 Dealer Tables - Contact Sergio Lugo

PUZZLE PAGE



**Samuel Morse
Would Have
Loved It**

Can you read the messages below?

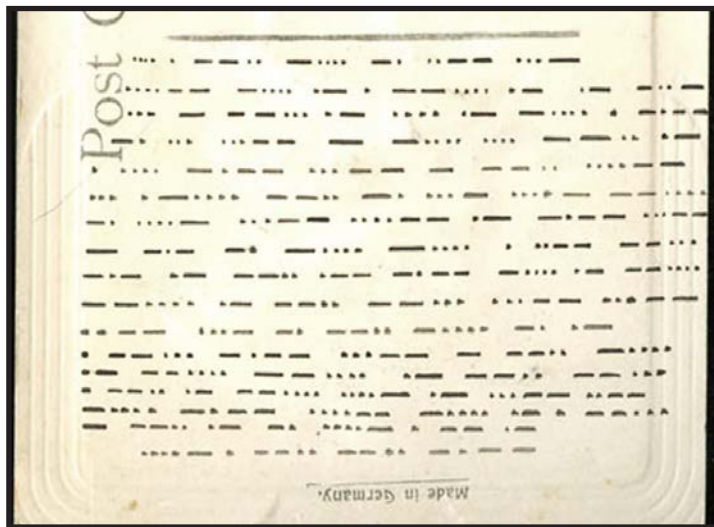


Shown here are three similar post cards mailed to the same young lady from Devonport West to Launceston, Tasmania in 1909. All three are franked with the Tasmania, 1d Pictorial (SG 247) stamp.

Your challenge is to decipher the messages ...
... and to determine just what the writer meant with the notation..."This is only a chance. I can't promise."

Ronald Hill, (former W3ZQQ)

hillwright@mac.com



Editor: We will try to bring you interesting philatelic and postal puzzle items on this page each issue.

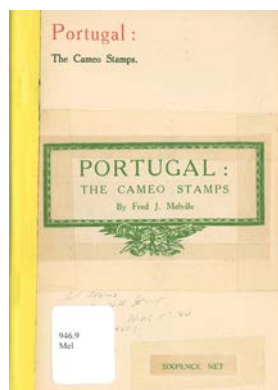
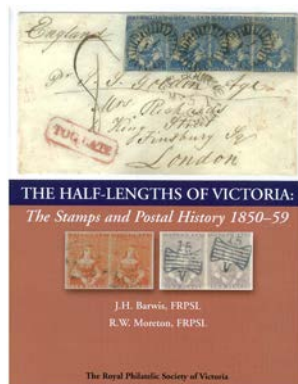
WHAT'S NEW ON THE SHELVES?

UNITED STATES

Classifying Postmarks: Illustrated Guide to the Dike Postmark Code, by Richard W. Helbock
Colorado Zip Code Directory, November 1988, published by the United States Postal Service
Designing Letter Mail, published by the United States Postal Service
Express Companies and Their Envelopes, by Sherman Lee Pompey
History of the National Association of Postmasters of the United States, Utah Chapter, 1969, compiled by Eleen T. Williams
Railroad Postal Routes from 1867 to 1961, by Herbert H. Harrington, Sr.
Schedule of Mail Routes, No. 140, Nebraska, Colorado and Wyoming, United States Post Office Department, Railway Mail Service
United States Perfins, The Perfins Club
Wells, Fargo & Company 1861 Pony Express Issues, by Scott R. Trepel

AUSTRALIA and OCEANIA

The Half-Lengths of Victoria: the Stamps and Postal History 1850-59, by John H. Barwis and R.W. Moreton



EUROPE

The Airmails of the Channel Islands, by William Newport
The British Traveling Post Office, by Peter Johnson
Catalogo Normal del los Sellos de Colonias y Ex-Colonias Espanolas de Correos y Telegrafos Emitidos desde 1855 a 1947, published by M. Galvez
Catalogo Normal del los Sellos de Ex-Colonias Espanolas de Correos y Telegrafos Emitidos desde 1868 a 1951, published by M. Galvez
Portugal: the Cameo Stamps, by Fred J. Melville
Portugal: Postage Stamps, 1880-1911, by Fred J. Melville

NORTH AMERICA

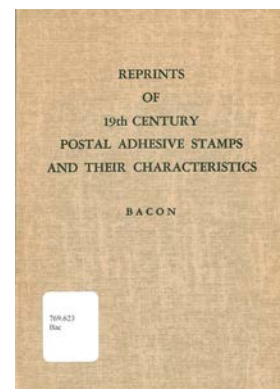
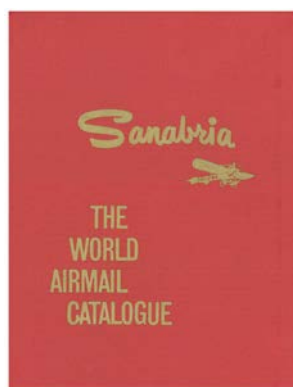
Survey of Revenue Stamp Usage in Canada, by Christopher D. Ryan (CD)

TOPICAL

A Checklist of Mollusks on Postage Stamps, by Tom Rice
Illustrated Catalogue of Lighthouse Stamps, 9th Edition, parts 1 & 2, compiled by Keith Hall

UNITED NATIONS

United Nations Specialized Stamp Catalog and Handbook, 1972, published by Lindner



MISCELLANEOUS

The Care and Preservation of Philatelic Materials, by T.J. Collings and R.F. Schoolley-West
Catalogue de Timpres-Poste: Quatre-Vingt-Sixiem Annee; Europe (I à Z) 1982, published by Yvert & Tellier
Everything for the Stamp Collector: a Catalog for Those Who Enjoy the World's Most Popular Hobby, 1953 Edition, published by H.E. Harris & Co.
Intermediate Stamp Collecting I, by Richard L. Sine
The Paquebot Marks of the Americas, by Gustav L. Lund
Reprints of 19th Century Postal Adhesive Stamps and Their Characteristics, by E.D. Bacon
Stamps of the United States, United States Possessions & British North America, Second 1953 Edition, published by H.E. Harris & Co.
The World Airmail Catalogue, A-Mex and United States, 1972, published by Sanabria

NON-PHILATELIC (Railroads)

The Monitor Guide to Post Offices and Railroad Stations in the United States and Canada
Route Surveying, by George Wellington Pickels and Carroll Carson Wiley

WHAT'S NEW ON THE SHELVES?

NON-PHILATELIC*Atlas of Utah**Hit and Run*, by Lawrence Block*Mormon Country*, by Wallace Stegner*Mormonism Now and Then*, by G.T. Harrison*Mormonism: Shadow or Reality*,

by Jerald & Sandra Tanner

*Shared Moments: Rocky Mountain National Park and**Estes Park Remembered in Postcards*,

by James H. Pickering & Bobbi Heisterkamp

AUCTION CATALOGS*The 1918 24¢ Inverted "Jenny"*, Robert A. Siegel June '11*Aerophilately: Featuring the Collections of Pillage**"Sea to Shinning Sea"; Reinhard "Swiss Pioneers";**Eliashar "Crash and Pioneer Arctic Flights";**Disasters Including Train & Ships; Containing**Every Conceivable Lighter-Than-Air fare,*

Nutmeg Mail Sales auction October 2007

*The Alan Geisler Collection of United States Carriers and**Locals*, Robert A. Siegel, December 2008*The Allan Goldberg Collection of United States Postal**History*, Robert A. Siegel, September 2007*The Barry K. Schwarätz Collection of the 1893**Columbian Issue*, Robert A. Siegel, February 2008*The Christopher Gruys Collection of United States Rarities**and Worldwide Air Post*, Robert A. Siegel Sept 2002*The Collector's Series Featuring the Robert C. McCarthy**Collection of United States Postage Stamps*,

Shreves Galleries auction December 2003

*The Collector's Series of United States, Hawaii &**Worldwide Postage Stamps and Postal History*,

Spink Shreves Galleries February 2008

The Daniel Cantor Collection of the Province of
Canada 1851-1868: the Pence and Cents Era,
Matthew Bennett International September 2011*The Dr. Choi-Lok Tang Collection of Extraordinary*
Quality Canadian Stamps and Postal History,
Shreves Philatelic Galleries September 2006*The Duane H. Hillmer Collection of United States*
Stamps and Covers, Robert A. Siegel, April 1999*A European's Large-Gold Collection of 1869 Pictorial*
Issues, Robert A. Siegel, December 1999*Germany*, Cherrystone Philatelic Auction May 2007*The Islander Collection: the Rarest and Most Outstanding*
Stamps of South America, Robert A. Siegel
advertising brochure for the June 2008 auction*The Joseph Hackney Collections of New Zealand &*
Ceylon, ad folder for a Spink Shreve Galleries
auction 2009*The Lewis E. Colin Collection of Outstanding United*
States Stamps, Robert A. Siegel June 1999*The Ortiz-Patiño Collection of Bolivia*, Spink Shreves
Galleries auction March 2008*The Peter Balner Collection of Inverted Centers*
of the World, Shreves Philatelic Galleries
September 2002*Philatelic Collection Sale: The William L. Lewis Collection*
of Germany & Related Areas Postage Stamps,
Spink Shreve Galleries October 2005*The Premier Sale: United States and Canal Zone Stamps*
Featuring a Portion of the John C. Chapin Collection,
Shreves Philatelic Galleries May 2003*The Summit Collection of Encased United States Postage*,
Robert A. Siegel April 2008***History of the World Through Stamps; OLLI Class Begins Again in March***

A new eight-week class, sponsored by Denver University's Adult Lifelong Learning program called OLLI, begins in late March in Golden and will offer presentations and discussions of a wide variety of philatelic subjects in addition to a visit to the Rocky Mountain Philatelic Library.

RMPL member, Tim Heins, will be the Facilitator for the Spring class. Volunteer presentors are needed now to be scheduled for individual classes. For more information or to offer a program for the Spring classes, contact Tim Heins at timheinscpa@msn.com

This class follows a similar Winter Class program beginning January 11 facilitated by Ronald Hill and Steve Nadler. Presentors for the Winter class include Tim Bartshe, Steve Mc Gill, Jeff Modesitt, Jack Van Ens, Ron Mitchell, David Weisberg and Sergio Lugo.

Since 1840, with the introduction of postage stamps to pay for forwarding mail within cities, countries and around the world, virtually every country in the world has since printed their history, culture and propaganda on stamps. These tiny pieces of history have fascinated collectors and historians for more than 170-years.

Subjects covered in the upcoming Winter classes will range from the Boer/Afrikaaner period of South Africa to American History comparing Thomas Jefferson and Franklin Roosevelt (who was a stamp collector). Also presented will be the story of Ludwig Boltzmann, a famous Austrian physicist; The only stamp of a foreign country printed in Denver; How stamps of Great Britain, U.S. and Germany were influenced by events leading into WW2; and New Zealand's history and culture as pictured on its stamps.

NEW MEMBERS

The library is pleased to welcome the following new members who have joined in the past two months.

Steven J. Rod, Maplewood NJ -

Collects US Postal History, US Philatelic Literature

Richard K. Aspnes, Littleton, CO -

Collects East Asia

David E. Bushard, River Falls, WI -

Collects WW singles to 1980

Larry B. Taft, Denver, CO - Collects many areas

Dr. Terrence "Terry" H. Dunn, Loveland, CO -

Collects Scouting Stamps

Stan Keller, Denver, CO - Collects the World

Cicy Zhu, Denver, CO

Mel Rawles, Aurora, CO - Collects U.S.

Doug Woodard, Arvada, CO -

Collects U.S. Stamps and Covers



Mexico's Denver Printing of 1914

Wins Gold Medal at Chicagopex

Congratulations again to Ron Mitchell, the library's newest literature gold award winner for his book, *Mexico's Denver Printing of 1914* which has won its second gold medal in major literature competition at CHICAGOPEX in November. There are only a few copies (15) remaining for sale. The price for this hard cover book with CD of all illustrations is \$50.

CLOSED ALBUMS

Ralph Walther, a long time member of the RMPL, died on July 29, 2011. Residing in Vacaville, California, Mr. Walther was born on January 12, 1925 in Chillicothe, Ohio. An Army veteran of WWII having served with Patton's Third Army, following his service he earned a finance degree through the G.I. Bill. Mr. Walther was a member of the American Philatelic Society, at one time serving on its Board of Vice Presidents and its Finance Committee. He was a member of the Collectors Clubs of Denver, New York and San Francisco. His specialty was Canadian Revenue stamps.

DONATIONS

The library thrives on the enthusiasm and generosity of its members. The following members have made donations to the library over the past two months. We thank each and every one who has contributed.

Jocelyn Aycrigg

Herman Axelrod

Richard Axtell

Tim Bartshe

Lucy Bates-Jolas

Bob Beason

Jan Marie Belle

Peter Bergh

Brian Bernard

Don Beuthel

Tom Brey

Richard Burrows

Lewis Bussey

Eric Carlson

Colorado Postal

History Society

Thomas Crane

Glen Davis

James Debros

Joe Ditlow

Steve Dixon

Bob Easterly

Nolan Flowers, Jr.

Greg Frantz

Floyd Fredrick

Jim Gerson

Joan Grady

Alan Hanks

Tom Higel

Gene Holgate

Fred Huskins

Ernest Izzard

Estate

Leontine Joll

Charles Klein

Jason Knezel

Donald Koontz

Charles LaBlonde

Joe Lambert

Robert Lansing

Frank Leitz

Patricia Ling

Art Lizotte

Stanley Luft

Steven Lund

Clark Lyda

Anthony Marks

Mike Masselli

Dasa Metzler

Jeff & Jennifer

Mitchell

Kari Monson

John Mulder

Terrence Murphy

Richard Owens

Steve Pacette

SWteven Peckar

Thomas Pollard

Post Mark

Collectors Club

David Reitsma

Norm Ritchie

Owen Robb

Roger Rydberg

Steve Schweighofer

Rebecca Seaman

Richard Seeley

John Sinski

Donald Smith

Fredrica Smith, MD

Julia Stapp

Richard Stein

Lori Stover

Ludvik Svoboda

Steve Taylor

Dalene Thomas

Jack Van Ens

Tonny Van Loij

Andrew Wacinski

David Weisberg

Arthur Weaver

Dexter Williams, Jr.

SECOND SATURDAY PROGRAMS AT THE LIBRARY



Second Saturday programs are sponsored by the library and attract a friendly group of folks who are interested in a specific subject or who are interested in learning more about an area of philately that may be new to them. Contact Jim Kilbane if you would like to present a program.

e-mail: aurora_80017@yahoo.com

The programs begin at 9:00 AM and are over by 10:00 AM.

Doughnuts and coffee are complimentary and all are welcome.



JANUARY 14, 9:00 AM

*la Musée de la Poste -
The French Postal
History Museum*

by Charlie Johns

Charlie Johns and his wife spent two and a half weeks in France. While they were there Charlie spent a day in the Postal History Museum and would like to share that experience with members of the Library.



FEBRUARY 11, 9:00 AM

*Austria's 1933
50-groschen
charity stamp*

by Steve Schweighofer

Steve Schweighofer will present Austria's 1933 50-groschen charity stamp. Shown in the presentation will be the varieties, catalog values compared to United States high-value stamps of the same period, reproductions and counterfeits and later uses of the design.

SHOWS & EVENTS

\$1.00 off admission with this card

Denver Postcard & Paper Show Winter 2012



Antique & Collectible Postcard & Paper Show & Sale

Jefferson County Fairgrounds Exhibit Hall (15200 W. 6th Ave., Golden, CO)
Exit Indiana St. from West 6th Ave. -- 20 minutes west of downtown Denver

Friday, January 20 11:30 a.m. – 7:30 p.m.
Saturday, January 21 9:00 a.m. – 5:00 p.m.

- * plenty of free parking
- * food available on site
- * door prizes daily
- * admission \$4.00 (good for both days)
- * friendly atmosphere
- * dealer inquiries welcome

Contact **Dede Horan** at 303-667-6212

E-mail: DenverPostcardShow@hotmail.com

www.DenverPostcardShow.com



What's Happening at the RMPL...

Hours: Monday, Tuesday, Wednesday, Friday, Saturday 10:00 AM - 4:00 PM
Thursday 2:00 - 8:00 PM. Closed Sundays and Holidays. Phone: 303.759.9921

Meeting times and places sometime change. It is best to call the library or the club to confirm the place and time. A calendar of reserved club times is kept by Operations Manager, Don Beuthel, at the library. Clubs should check the calendar regularly and notify Don (303-755-9328) of any changes or updates. All requests to reserve meeting time and space other than those listed here must be approved and scheduled by Don well in advance.

JANUARY 2012

- Jan 4** - Meeting-Aurora Stamp Club.
6:30 PM trading, 7:30 PM meeting/program
- Jan 7** - Meeting 10:00 AM
Scandinavian Collectors Club
- Jan 7** - Meeting - 1:00 PM
TOPIC - Topical Philatelists in Colorado
- Jan 11** - Meeting - 7:00 PM
Denver Germany Stamp Club
- Jan 12** - Meeting 6:30 - Denver Post Card Club
- Jan 14** - 9:00 AM
Second Saturday at the RMPL
Program by Charlie Johns
- Jan 14** - Meeting - 10:00 AM
Mexico/Latin America Study Group
- Jan 14** - Meeting - 11:30 AM
U.S.S. Colorado Chapter, USCS
- Jan 15** - Meeting - 2:00 PM
Great Britain & Commonwealth Collectors
- Jan 16** - **CLOSED-Martin Luther King Day**
- Jan 19** - Meeting - 7:00 PM
RMPL Board Meeting
- Jan 24** - Meeting 7:30 PM Rocky Mtn Stamp Show

FEBRUARY 2012

- Feb 1** - Meeting-Aurora Stamp Club.
6:30 PM trading, 7:30 PM meeting/program
- Feb 4** - Meeting 10:00 AM
Scandinavian Collectors Club
- Feb 4** - Meeting - 1:00 PM
TOPIC - Topical Philatelists in Colorado
- Feb 8** - Meeting - 7:00 PM
Denver Germany Stamp Club
- Feb 9** - Meeting 6:30 - Denver Post Card Club
- Feb 11** - 9:00 AM
Second Saturday at the RMPL
Program by Steve Schweighofer
- Feb 11** - Meeting - 10:00 AM
Mexico/Latin America Study Group
- Feb 11** - Meeting - 11:30 AM
Rocky Mountain Aerophilatelists
- Feb 18** - 9:30 AM - Metro Denver Young Stamp
Collectors Club
- Feb 19** - Meeting - 2:00 PM
Great Britain & Commonwealth Collectors
- Feb 20** - **CLOSED - Presidents Day**
- Feb 25** - Meeting 1:00 PM
Colorado Postal History Society
- Feb 28** - Meeting 7:30 PM Rocky Mtn Stamp Show

Scribblings is published bimonthly by the Rocky Mountain Philatelic Library, Editor, Ronald Hill, 2038 S Pontiac Way, Denver, CO 80224. The Rocky Mountain Philatelic Library is a chartered Colorado nonprofit corporation and an IRS designated 501 (c)3 charitable organization. Membership subscriptions over that for the regular membership, and donations of appropriate philatelic materials, are deductible for U.S. income tax purposes.

RMPL BOARD OF DIRECTORS

President: Sergio Lugo - Operations Manager: Don Beuthel - Vice-President: Jim Kilbane
Corresponding Secretary: Don Dhonau - Recording Secretary: Paul Lee - Treasurer: Bob Blatherwick
Directors: Jan Marie Belle - Roger Cichorz - Dalene Thomas - David Weisberg.