

# Scribblings

...from the Rocky Mountain Philatelic Library



Ronald Hill, Editor

Ellengail Beuthel, Librarian

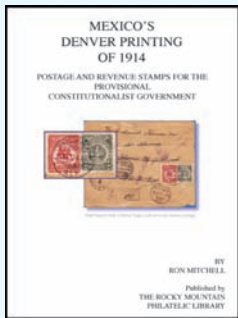
Vol. 19 - No. 5  
www.rmpldenver.org

2038 South Pontiac Way, Denver, CO 80224  
303.759.9921

September-October 2011  
Email - rmpl@qwestoffice.net

## IN THIS ISSUE

- The Spanish Patrol.....1-3
- Inter-American  
Radio Office ..... 4-5
- RMPL Family Picnic .....4
- The Prez Observations.....6
- Periodical Pickin's .....6
- Variations of an Early Dear  
Doctor Post Card.....7
- What's New on the  
Shelves.....8-10



- Denver Eagles Book  
Wins Gold .....10
- 2011 Bulk Auction.....11
- Czech Society Library....11



- World History OLLI  
Programs.....12
- New Roof.....12
- Fakes - Great Cover .....13
- New Members ..... 14
- Mauritius-The Play.....14
- Second Saturdays.....15
- Shows & Events.....14-15
- Calendar.....16

**VOLUNTEERS NEEDED**  
Contact the RMPL

## The Spanish Patrol *La Croisière d'Espagne* 1936-1939

by Stanley J. Luft

Whereas the Spanish Civil War may date in the lifetime, if not the recollections, of some of our members, the role of the French Navy in that conflict is but little known, and I will attempt to address it here.



Figure 1 - Embarked agency 8 Sept. 1936 date stamp of cruiser Colbert and ship's straightline marking, plus MARINE FRANCAISE/SERVICE A LA MER administrative cachet in large letters, to Toulon from Barcelona. Mériaux states ship was docked at Barcelona 3 Sept. 1936 to 3 January 1937.

### Historical Background

Spain became a republic on 14 April 1931 and later a leftist Popular Front regime in May 1936. The immediate result was a 17 July uprising in Spanish Morocco by a Nationalist Army under Gen. Francisco Franco, which took positions just a few days later in mainland Spain. By the end of the month, sympathetic (or conniving) Nazi Germany and Fascist Italy had joined the Nationalist side. France, with a Popular Front of its own, unofficially lent some support to the Republican side. Several other countries provided volunteers, mainly to Republican units.

Great Britain and France increased the size of their fleets in and around Spanish waters beginning in mid-August 1936, to protect the Spanish civilian population and the stream of refugees into France. They also served to contain the quantity of war materiel sent to the belligerents, and to keep close watch on Italian and German warships, principally submarines. This was the start of the *French Croisière d'Espagne*. In mid-September, an international conference in Nyon resulted in Germany and Italy walking out and with minimal support from the other nations involved. Therefore, Great Britain and France shouldered the burden of "non-intervention" and patrolled and essentially blockaded the Spanish and colonial ports.

Continued on page 2

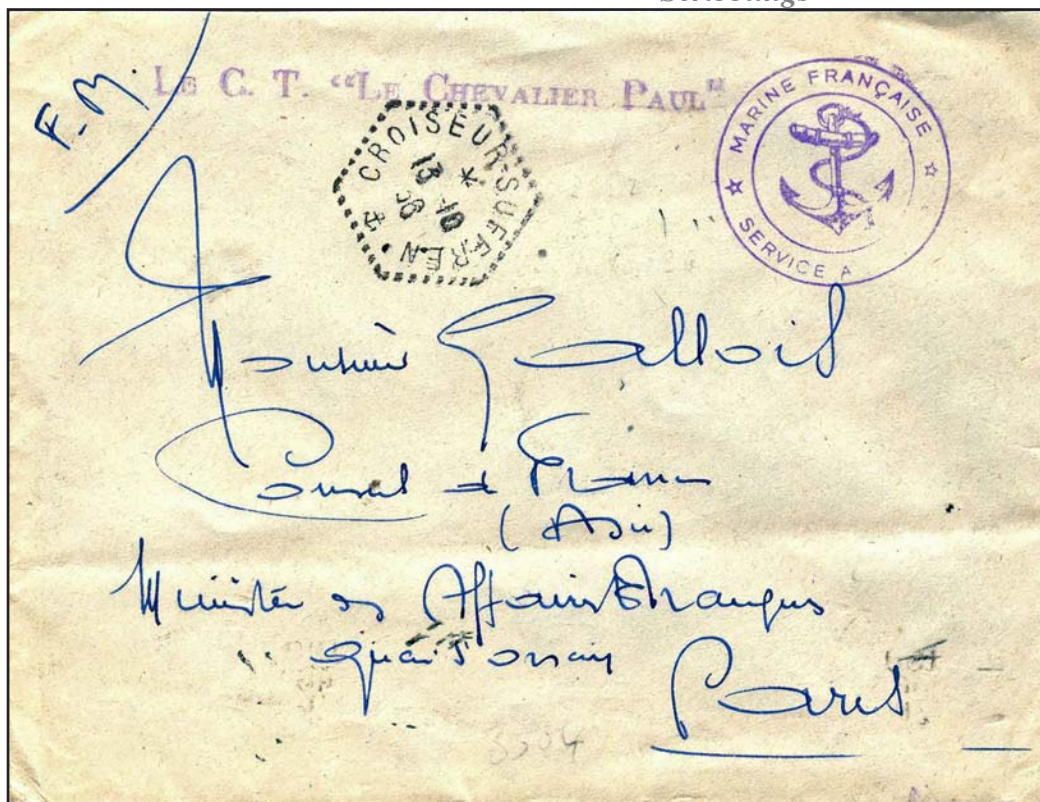


Figure 2 - Embarked agency 13 Oct. 1936 date stamp of cruiser Suffren and weak strike of accompanying destroyer Le Chavalier Paul. plus the MARINE FRANCAISE cachet in small letters, to Paris; letterhead on back of French Consulate General at Barcelona (ex Mériaux)

## The Spanish Patrol 1936-1939 Continued from page 1

Their greater numbers largely halted any hostile action by Italian and German ships. The French portion became known as the *Dispositif Spécial en Méditerranée*, or by its initials *D.S.M.* It required the presence of a large part of the French Mediterranean Fleet, and served on its mission, in ever decreasing size, until shortly after the Spanish Civil War ended on 1 April 1939 — to be followed shortly by a far larger and bloodier conflict!

### The French Navy in the *D.S.M.*

Here I will attempt to name all of the larger vessels and some of the smaller ones that served at one time or another in the *D.S.M.* to encourage interested readers to check their own naval markings for this 1936-1939 period.

The French warships were: the *Béarn*, her only aircraft carrier at the time; the battleships *Bretagne* and *Lorraine*; the cruisers *Colbert* (Fig. 1), *Dupleix*, *Duquesne*, *Emile Bertin*, *Jean de Vienne*, *La Galissonnière*, *Suffren* (Fig. 2), and *Tourville*; and the aircraft transport *Commandant Teste* (Fig. 3).

I am indebted to Dr. Meriaux (1998, p. 401) for this list. All of these larger ships had their own shipboard naval agencies bearing the familiar dashed hexagonal date stamps (Figs. 1-3) and handled mail directly in sealed mail sacks to and from France. Complete lists of the smaller vessels are difficult to find; these handled and received their mail from the larger ones, or any ship, naval or commercial, headed to or from France. One such, that handled considerable mail, was the heavy destroyer *Chevalier Paul* (Fig. 2); others but lesser known philatelically, were the destroyer *Sirocco* (Fig.4)

and submarine *Tonnant*. Warships returning from mission generally dropped off their mail at Toulon or Brest.

### Mail of the Spanish Patrol

From the beginning, and when engaged in evacuation or surveillance, officers and men benefited from the military franchise for cards and letters to 20 gm mailed to Metropolitan France, and at the current French domestic rate for other mail. It usually carried a handwritten *F.M.* (*Franchise Militaire*) in upper right, as seen in Figure 1, occasionally upper left, as shown in Figure 2, in lieu of a postage stamp. Apparently there was no official mention in the *Bulletin Officiel*, neither by the PTT nor the Navy, authorizing this franchise. The franchise was in effect as soon as a warship departed from its home port until the ship returned to it, and as late as June 1939 (late date authorized per communication of PTT Ministry of 27 April 1939). Mail to the officers and enlisted men had to carry regular French postage.

At some early point in time, mail received the familiar circular cachet *MARINE FRANÇAISE / SERVICE A LA MER* with inner naval anchor (Figs. 1-3). At about the same time, or April 1937 and generally until September 1937, a *Contrôle Naval* marking was added, with or without the dashed hexagonal date stamp of cruisers and larger warships. And from mid-September 1937 until the April 1939 end of hostilities, the manuscript *D.S.M.* or spelled-out *Dispositif Spécial en Méditerranée* (Fig. 4) was generally applied. Locally made metal or rubber cachets (Figs. 3-4) were usually struck by the ship's *vaguemestre*, (mail clerk).

(continued next page)



Figure 3 - Embarked agency 19 Dec. 1936 date stamp of aircraft transport *Commandant Teste*, partial naval anchor administrative cachet in large letters, and boxed rubber-stamped "TRANSPORT D'AVIATION/Commandant TESTE", on postcard from Palma (Majorca); French surveillance of Nationalist-held Balearic island.

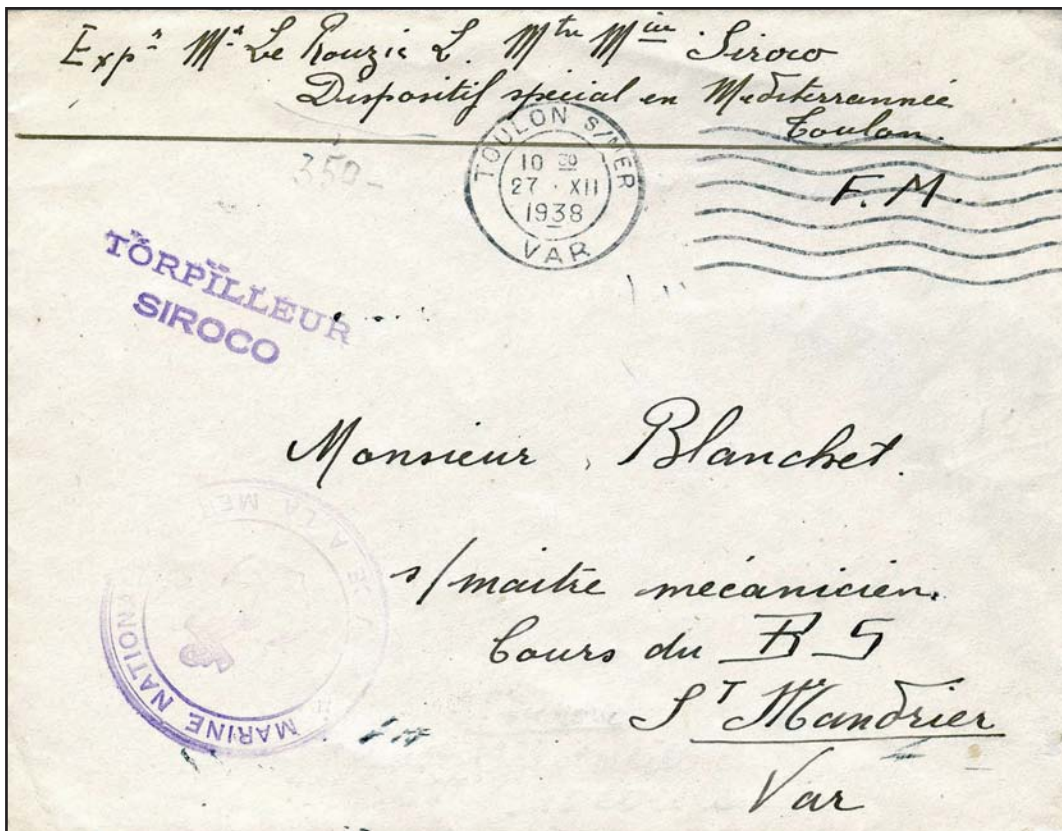


Figure 4 - Toulon, 27 Dec. 1938 Secap machine cancel on franchise mail from destroyer *Sirocco* (rubber stamped *TORPILLEUR/SIROCO*), and with franchise notation *Dispositif Spécial en Méditerranée, Toulon*, where ship was based.

### Selected Bibliography

1. Henri Le Masson, 1969, *The French Navy I*; Doubleday, Garden City, NY.
2. Jacques Mériaux, 1998, *Histoire de la Poste Navale. 1792-1992, Vol. 1*, Editions Bertrand Sinais, Paris, pp .395-402
3. Theo van Dam, 1996, *A Century of War Dates (and more!) 1859-1959; Postal Covers*, Anaheim, pp. 124-126
4. Michel Parlange, 1972, in *F.M. No 190*, pp. 6-11. This is the most detailed study of the *Croisiere*, but I've been unable to obtain a copy.

## Inter-American Radio Office Covers Sent to the U. S. Secretary of State During World War II -Part of FDR Collection

by Paul M. Holland

Postal history of the World War II era offers a fascinating area for philately. Among such items are **Inter-American Radio Office** covers sent to the U.S. State Department from Havana during World War II. That these covers have survived owes much to the fact that President Franklin D. Roosevelt (FDR) was an avid worldwide stamp collector. Because he requested that the State Department save stamps for him and his personal collection was sold at a series of H. R. Harmer auctions in 1946 after his death, many interesting postal history items are now available to collectors that might otherwise have been lost to posterity.

Here are three covers from the **Inter-American Radio Office** in Havana addressed to The Secretary of State, all with the Harmer auction authentication stamp showing these were from FDR's personal collection. The first, *Figure 1*, was sent by registered mail on 1 October 1941, shortly before both the United States and Cuba entered the war, with a 5 October Washington, DC backstamp.

The second, *Figure 2*, and perhaps most interesting, of these is a Paquebot cover, with Cuban stamps canceled in Miami with a BUY WAR SAVINGS BONDS AND STAMPS cancellation on 27 December 1942 (without backstamp).

The final example is a registered air mail cover sent 5 January 1943 with multiple registered mail backstamps including 5 January 1943 at Havana, 8 January at Miami, and 10 January at Washington DC, along with a red H. R. Harmer FDR auction authentication.

Also of interest are the pencilled notations on the front of these covers, apparently from the State Department's mailroom, of Swanson, Swan, or Sw apparently indicating that this correspondence was to be routed to someone named Swanson.

Finally, careful examination of the typewritten addresses show that the same typewriter was used for all three covers (note the relative position of the capital letter "T", etc.).

The **Inter-American Radio Office** (O.I.R.), headquartered in Havana, Cuba, was created following the First Inter-American Radiocommunications Conference in Havana in December 1937, with member governments including the United States and most Latin American countries. The primary function of the organization was to coordinate broadcasting and assign radio frequencies based on international agreements.

Because of the importance of radio during the early 1940s, and with war approaching, FDR separately created the Office of Coordinator of Inter-American Affairs on 30 July 1941 which grew substantially during the early years of World War II and included extensive use of broadcast radio, in and to Latin America to counter Axis propaganda there. In this context, coordination of information received from the **Inter-American Radio Office** via the State Department would have played a key role in the anti-Axis propaganda effort, making these World War II era covers an especially interesting souvenir of wartime Havana.

## Successful RMPL First Annual Picnic Becomes an "inside job"

August heat drives most members inside. But all enjoyed great food and good company.

"Maybe next year we'll hold it from 4:00 to 6:00pm", Sergio.



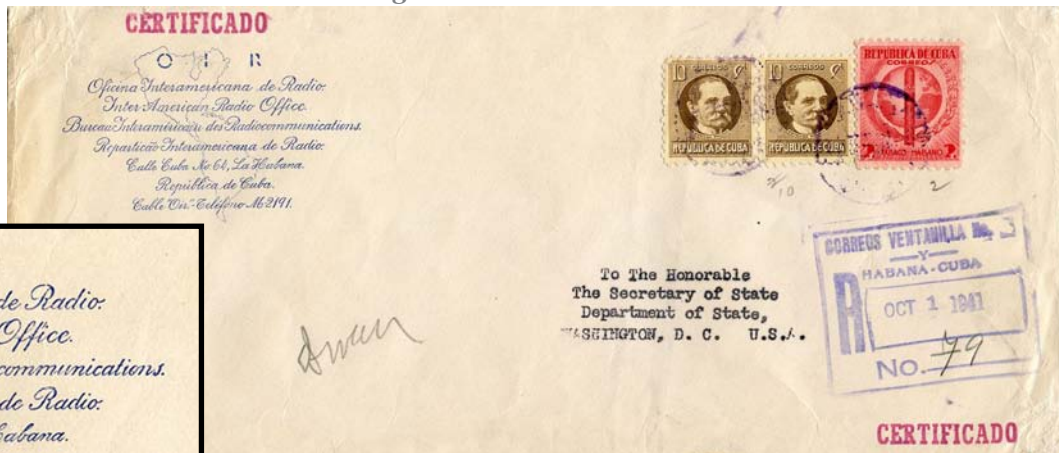


Figure 1 - 1 October, 1941



Registered cover franked with a pair of 10 centavo Palma and 2 centavo cigar stamps used from Havana to Washington, DC. Backstamp shows it was received on 5 October.

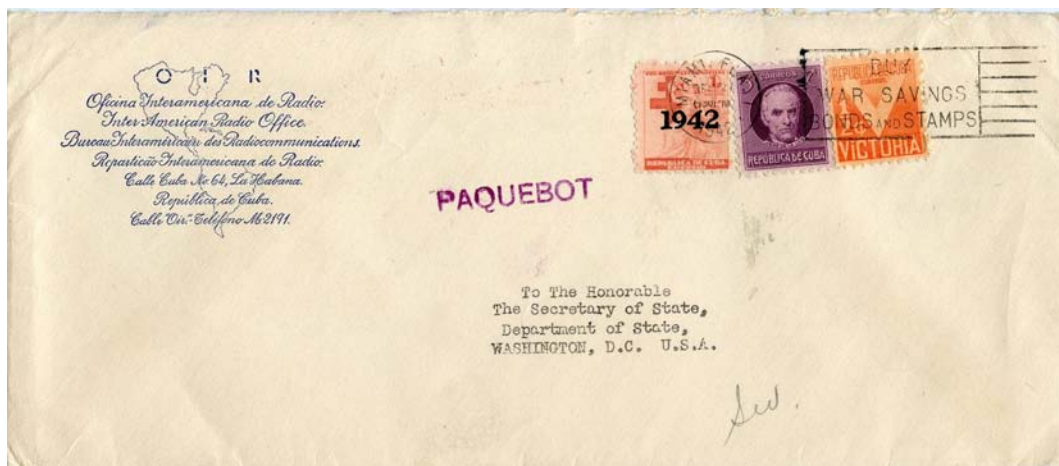


Figure 2 - December, 1942

Paquebot cover franked with 3 centavo de la Luz, and 1/2 centavo and 1 centavo postal tax stamps used 27 December 1942 from Havana to Washington, DC. No backstamp.



Figure 3 - 5 January, 1943

Registered airmail cover franked with three 10 centavo Palma, and 1/2 centavo and 1 centavo postal tax stamps used 5 January 1943 from Havana to Washington, DC.

See backstamps, Figure 3a below.



Figure 3a

Registered airmail cover (back of Figure 3) showing backstamps of 5 January 1943 at Havana, 8 January at Miami, and 10 January at Washington DC, along with a red H. R. Harmer authentication stamp.

## The Prez' Observations

### Are Libraries Destined To The Fate of The Post Office?

On a recent trip to Minnesota, I was surprised by the proliferation of newspaper and TV media articles on various crises affecting public libraries in Denver, Aurora, Omaha, Minneapolis/St. Paul and Dakota County, Minnesota. Naturally, their appearance led to the natural question of "What's going on?" Then, it occurred to me! Their common problem - loss of patronage and governmental revenues in the face of increasing costs, fewer visits (despite greater offerings) and greater on-line competition. If this tune sounds familiar to us, it should as it is similar to the Post Office's woes bedeviling it in the electronic age. .

Bedeveling, you betcha! For in part, both are victims of their own success - particularly libraries. The electronic, digital age has made the availability of "the book" at our thresholds almost an afterthought. Most of us grew up with the regime of hiking to the library, searching through card catalogs, asking the help of reference librarians, then tediously seeking out the book, and signing out for it. Tedium in the extreme - now increasingly replaced by the click of a few buttons from the solitude of our rooms and homes. A savings of countless hours; and best of all no penalties when we forget to get the book back!! And as the efforts to digitize their holdings by Google, Amazon, countless universities, and libraries (including

philatelic ones) to digitally expand, the world increasingly will be at our doorsteps in ways that were unimaginable just two decades ago.

Or will it! For the beauty of that ever expanding database of digitized books, is that it doesn't lessen the need for libraries, but rather provides libraries opportunities for alternative services to the reading public. And that's even more so among philatelic libraries - as a gathering place of like minded souls, as a place for camaraderie among fellow enthusiasts, as a place of focused energy and study to assist the non-collecting public to name just a few. And as we're called upon to increasingly provide those services so does the call to engage in other activities, to present adult education courses, to engage youth in activities. to deepen our research capabilities as we look to write and explain events of the past.

And we as a highly specialized library are at a crucial vantage point to observe, participate, and contribute in the magnificent opportunities afforded by the internet. Why - because of our inherent specialization and the likelihood that general libraries won't be entering into our domain, if ever, for decades to come. Let's hope that all of us are in a position to further that electronic and information revolution, as opposed to being stuck in the mud bemoaning days gone by when life was (allegedly) ever so much "simpler"!

*Sergio*



### OK, Seth, These are Stamps...!

*Yeah, but why don't you use tongs?*

**For the rest of the story you will have to ask Grandpop Sergio.**

## PERIODICAL PICKIN'S

### THE TORCH BEARER

The Society of Olympic Collectors was founded in 1984, and remains the only English language philatelic society specializing in the Olympic theme. The Society is based in England.

The *Torch Bearer* is the Society's quarterly forty-eight page journal offering news, articles and regular check-lists of postally related Olympic material world-wide. Articles deal with past and future celebrations of the Olympic Summer and Winter Games, as well as material related to the structure of the modern Olympic movement. It is published four times a year: in February, May, August and November.

The RMPL's holdings of *Torch Bearer* span the years 1985 to 1989. Those contain detailed articles of issues and personalities in the Olympic movement, as well as specific stamp issues and new stamp releases.

As was typical of the time, everything was published in black and white. The periodical carries no commercial ads. We suspect that the format of *Torch Bearer* may have changed significantly since then, as evidenced by the Society's webpage, which can be found at:

[www.societyofolympiccollectors.org](http://www.societyofolympiccollectors.org)

# Variations of an Early "Dear Doctor" Postcard

By Roger Cichorz

I recently purchased a "Dear Doctor" advertising postcard originating from the Burlingame Chemical Co. of Los Angeles, California. It was posted November 28, 1908, addressed to Dr. U. S. Boone in St. Louis, Missouri, and had a printed advertising message for Pepsu-Laxatone, a "digestant and tonic laxative" made by the Burlingame Chemical Co.

A month or so later I found (and bought) another Burlingame Chemical Co "Dear Doctor" card on eBay. Turns out that this second card was mailed about 20-days earlier (Nov 9) to the same Dr. U. S. Boone in St. Louis, Missouri.

Back in the mid-1950's, doctors in the United States began receiving colorful postcards from exotic locations around the world advertising a popular anesthetic drug made by Abbott Laboratories, of Illinois, known as Sodium Pentothal. Abbott developed a scheme to mail a postcard every couple of weeks to hundreds of thousands of doctors and health facilities on its giant mailing list, first to US addresses and then others abroad.

Each card starts with the salutation, "Dear Doctor," hence the nickname of these collectibles sometimes referred to as "Dear Doctor" cards, followed by a message regarding the virtues of Pentothal.

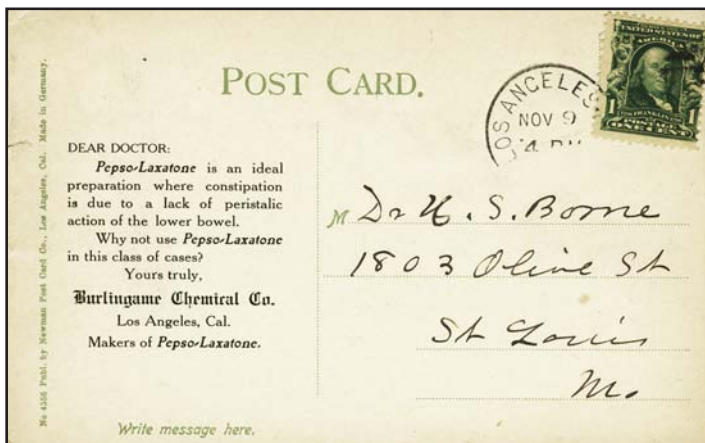
Until recently it was thought that the French drug company Fournier was the first to issue a "Dear Doctor" series of cards. Between 1911-1917 Fournier issued a series of cards sent to doctors in Argentina, Bolivia and Uruguay. All start with the familiar salutation, "Dear Doctor," and mailed from Paris.

These two cards, mailed about three weeks apart to the same person, are different in a number of ways.

A. Different Card Number (No. 4556 and A 61)

B. Different message.

C. Color photos on reverse are different.



No. 4556 Publ. by Newman Post Card Co., Los Angeles, Cal.  
Made in Germany. (Nov 9, 4 PM)

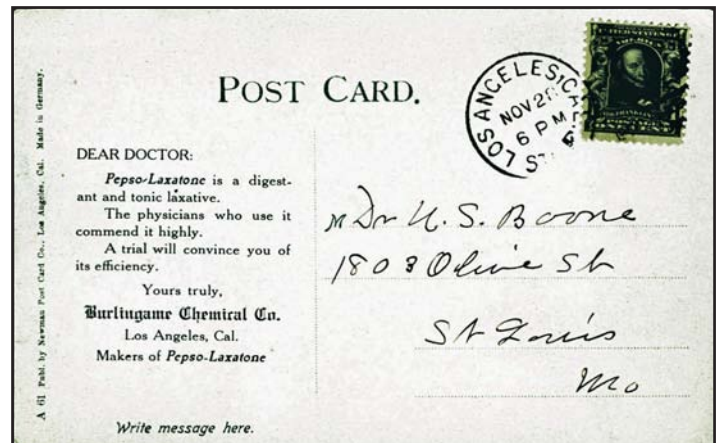
DEAR DOCTOR

*Pepsu-Laxatone* is an ideal preparation where constipation is due to a lack of peristaltic action of the lower bowel.

Why not use *Pepsu-Laxatone* in this class of cases?

The numbers on the cards, manufactured by the Newman Post Card Company and printed in Germany, no doubt, correspond to the color photos on the reverse which are regular scenic views of the Los Angeles area. The Burlingame Chemical Co., simply overprinted these cards with their message in the message area.

**BUT, what was Pepsu-Laxatone and what was the Burlingame Chemical Co.?  
That story continues next issue.**



A 61 Publ., by Newman Post Card Co., Los Angeles, Cal.  
Made in Germany. (Nov 28, 6 PM)

DEAR DOCTOR

*Pepsu-Laxatone* is a digestant and tonic laxative.

The physicians who use it commend it highly.

A trial will convince you of its efficiency.

## WHAT'S NEW ON THE SHELVES?

**UNITED STATES**

- Catalogue of the 20th and 21st Century Stamped Envelopes and Wrappers of the United States, 2011, 3rd Edition*, United States Postal Stationery Society
- Collecting Prexie Postal History*
- Collector's Handbook for Private Die Proprietary Proofs and Census of the Morton Dean Joyce Collection of These Issues*, by Richard Friedberg
- Connecticut Post Offices and Postmarks*, by Arthur J. Warmesley
- General Scheme of Arizona 1955*, pub. by the US Post Office Department, Transportation Service
- General Scheme of Colorado 1954*, pub. by the US Post Office Department, Transportation Service
- General Scheme of New Mexico 1953*, pub. by the US Post Office Department, Transportation Service
- General Scheme of Wyoming 1953*, pub. by the US Post Office Department, Transportation Service
- A Handbook of US Postal Markings Impressed by Machines, Revision 1 July 1992*, by Bart Billings
- The Official U.S. Stamp Guide 1971*, Edited by Harry F. Edelman
- Private Auxiliary Markings on Hollywood Fan Mail*, by Regis Hoffman and Thomas J. Richards
- Proud to Serve: A History of the US Postal Service in Rochester, New York 1812-1984* pub. by the United States Postal Service
- Schedule of Mail Routes: Denver Region Post Office Department*, pub. by the US Post Office Department, Transportation Service
- The Sesquicentennial of Texas in the Art of Gordon Bleuler, 1836-1986*
- The Stamp Collector's Registry, Revised Edition 1985*, by E.H. Cutler
- The United States Transit Markings Catalog, Vol. IV*, by Charles L. Towle

**ASIA**

- Brunei: the Definitive Issues and Postal Cancellations to 1974*, by E. Thorndike
- Collector's Guide to First Day Covers & Folders of India, 1947-1964*, by Praful Thakkar
- Heilongjiang in Old Postcards*
- Japanese Stamp Specialized Catalog 2002, Part 1*, (in Japanese)
- Malaya Postal Stationery 1937-1947*, by the Malaya Study Group
- Persiphila: Iran Postal Stationeries Reference C. 1878-1979*, by Mehrdad Sadri
- Soviet Postcards with Cosmonaut Portraits, 1961-1982*, by James G. Reichman

**AUSTRALIA and OCEANIA**

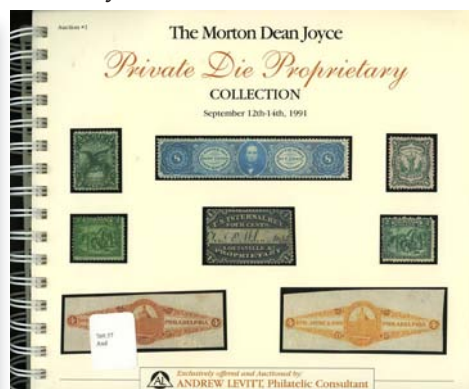
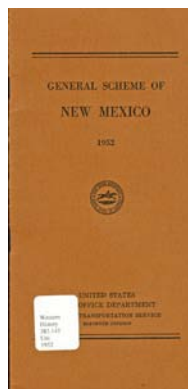
- Commonwealth of Australia: The George V Fourpence Halfpenny, Die 1*, by B.M. Wajer; and (same binder) *"Fourpence Halfpenny Die 2 and Surcharge"*, by B.M. Wajer and D.J. Edwards

**CINDERELLAS**

- Mosbaugh's Red Cross Seals of the World Catalog (1977)*, edited by Henry Irwin

**COLORADO**

- Grand Junction 1881*
- An Alphabetical Listing of the Railway Post Office Routes in Colorado*, by J.H. Willard

**EUROPE**

- Austria Netto Katalog: Briefmarken: Österreich Spezialkatalog, 2001-2002*
- British Empire Civil Censorship Devices: World War II: Section 6, British West Indies & Falkland Islands; Section 7, Canada and Newfoundland*, Edited by Peter C. Burrows
- Československo: Katalog Známek 1966 and 1971 editions*, pub. by Pofis
- The Commonwealth Catalogue of King George VI Postage Stamp, Ninth Edition 1962-63* Commonwealth Stamp Company
- Philatelie: Spiel und Ernst*, by Walther Heering
- Poste Aérienne Française : Historique, Plis Transportés par Voie Aérienne, and Marques Aéropostales : Vol. 1 : Afrique du Nord*, by Henri Truc
- Roman States and Vatican City : Postage stamp Specialized Catalogue 1979*, published by D.S. Bolaffi
- Santos-Dumont: "Père de l'Aviation"*, by Henrique Dumont Vilares
- The Stella Catalogue of Denmark : Price List 1952*, Danish Stamp Dealers' Association

**NORTH AMERICA**

- Webb's Postal Stationery Catalogue of Canada and Newfoundland, 7th Edition 2000*, Ed. by Earle L. Covert and William C. Walton



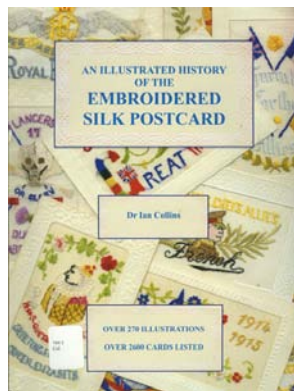
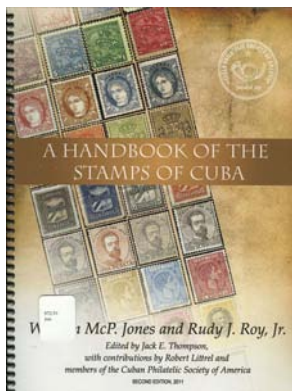
## WHAT'S NEW ON THE SHELVES?

## CENTRAL AND SOUTH AMERICA

*The 1892-1898 Postal Cards of Cuba-New Discoveries*,  
by Robert Littrell & Octavio Cabrera  
*Additions and Corrections to the Saenz [Costa Rica]  
Catalog, 2nd Edition*, compiled by Hector R. Mena  
*Brazil: First Issues, the "Tijuca" Collection*,  
Antonio M. Torres Private Treaty Sale 2001  
*Catalogo de Estampillas del Peru 1965-1966 edition :*  
«Ano del Nino», by Juan G. Bustamente F.  
CEFILCO : *Catalogo de Sellos Postales de Bolivia*,  
4th edition, 1971-1972  
*Handbook of the Stamps of Cuba 2nd Edition 2011:*  
*Part I : The Spanish Dominion 1855-1898 ;*  
*Part II : The U.S. Administration 1898-1902 ;*  
*Part III : The Republic 1902-1961*,  
by William McP. Jones and Rudy J. Roy, Jr.  
*La Primera Emision de Sellos Postales del Ecuador*  
1865-1872, pub. By Banco Central del Ecuador,  
Division Tecnica

## TOPICAL

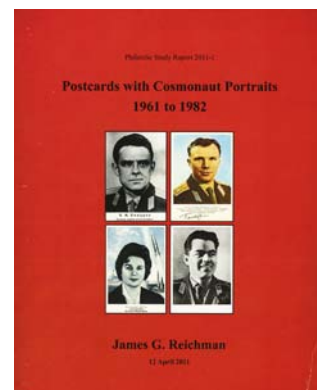
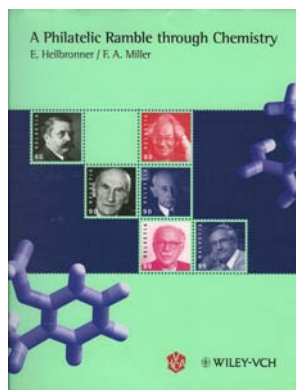
Československo: *Katalog Známeek: Dodatek 1966 edition*,  
pub. by Pofis (topical catalog)  
*Lesser Known Penguins on Stamps (CD)*  
*Medicine, Pharmacy, Red Cross: Cancellations*,  
*volumes I and II*, by Peter Gysin (German-English)  
*A Philatelic Ramble Through Chemistry*,  
by Edgar Heilbronner and Foil A. Miller  
*United States Cancels from Towns With Judaic and  
Biblical Names*, compiled by Mark Vainer



## MISCELLANEOUS

*American Philatelic Congress Books Index*,  
No. 1 – No. 72 (1935-2006)  
*The Best of the Philatelic Exhibitor: Vol. 1 1986-1996  
and Vol. 2 1997-2009 (CD)*  
*Computer Stamp Catalog*, by Dan N. Dobrescu (CD)  
*The Congress Book 2010*,

Seventy-Sixth American Philatelic Congress  
*Francis J. Field Publications, 5th edition (1971?)*  
(catalog of Field's publications)  
*Happiness Surrounds You, Embrace It!: The Stamp Booklet  
Guide to Happiness*, by Jeremy A. Lifsey  
*The Official U.S. Stamp Guide 1971*,  
Edited by Harry F. Edelman  
*The Pageant of Civilization: World Romance and  
Adventure as Told by Postage Stamps*, by F.B. Warren  
*Pocket Stamp Catalogue 1976: United States, Canada,  
United Nations*, Scott Publishing Co.  
*Price List of Mint Airmail Stamps*, by F.W. Kessler  
*Price List of Worldwide Revenue Stamps [1984]*,  
by William T. McDonald  
*Railway Disaster Mail*,  
by Robin Gwynn and Norman Hoggarth  
*Světová Výstava Poštovních Známeek [World Stamp  
Exhibition] Praga 1968*,  
(catalogue for the exhibition)



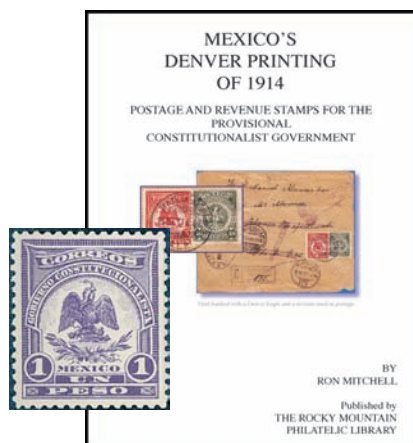
## NON-PHILATELIC

*The Elements of Style, Second Edition*,  
by William Strunk, Jr. and E.B. White  
*Embroidered Silk Postcards: From the Beginning through  
the Golden Era*, by Dasa Metzler  
*Engelsk-Norsk, Norsk-Engelsk Lommeordbok  
(English-Norwegian, Norwegian- English  
Dictionary)*, by J. Meyer Myklestad, and H. Søråas  
*An Illustrated History of the Embroidered Silk Postcard*,  
by Dr. Ian Collins  
*A Manual for Writers of Term Papers, Theses, and  
Dissertations*, by Kate L. Turabian  
*Sea Routes to the Gold Fields: the Migration by Water  
to California*, by Oscar Lewis  
*United States Government Printing Office  
Style Manual, 2000*

## AUCTION CATALOGS

We list here many recently acquired Auction Catalogs in addition to our regular listing of newly acquired books on our shelves.

- The "Andromeda" Collection of Unites States Bank Note Issue Covers*, Robert A. Siegel auction, April 2011
- Brazil: The "Amazon" Grand Prix Collection*, Habsburg, Feldman auction November 1987
- Brazilian Stamps and Postal History*, Christie's East Auction November 1994
- The Columbian and Trans-Mississippi Collections of Jack Rosenthal*, Andrew Levitt private treaty sale
- Haiti, ex late Bruno Sabatini*, Postiljonen auction, September 2000
- Latin America Including award winning collections of Brazil, Paraguay, Uruguay, Venezuela, and Guatemala*, David Feldman, November 1993
- Mexico "Aguilas"*, Soler y Llach, February 1997
- The Morton Dean Joyce Collection of Private Die Proprietary Models, Proofs and Stamps*, Andrew Levitt Auction September 1991
- The Rolfe E. Wyer Collection of French Colonies*, Spink Shreves auction, May 2011
- An Uncommon Market Auction [mostly Peru plus some other South American Material]*, Robson Lowe International auction March 1975
- The Westpex Sale Public Auction No. 44*, Schuyler Rumsey auction April 2011
- The Westpex Sale: A Specialized Sale of Confederate States of America Featuring the James Monroe Collection*, Schuyler Rumsey auction April 2011
- William H. Gross Collection: Confederate States of America: Postmaster's Provisionals: The War Between the North & South*, Spink Shreves Galleries auction November 2009
- Zeppelin Mail: the Gerhard Wolff Collection*, Nutmeg Stamp Sales auction May 2008
- The Joseph Hackmey Collections of New Zealand 1855-1872, Part II*, Spink Shreves, May 2010
- Mexico Coleccion « Hidalgo »*, Soler y Llach Subastas Internacionales, May 1995
- Mexico Coleccion Shatzkes*, Afinsa Auction Nov 2002
- Mexico Imperial Eagles: Leo V. Corebett Collection*, Antonio M. Torres auction March 2000
- Michigan Postal History & Historical Ephemera Public and Mail Bid Sale Featuring the Richard G. Ebach Saginaw Postal History Collection*, Craig A. Whitford auction October 2010
- The Nathan Liberman Collection: United States Essays & Proofs, Postage Stamps and Errors*, Spink Shreves auction October 2010
- Primarily Combination Mails of the British Foreign Post Office: The Dr. Paul J. Kornan Collection*, H.R. Harmer auction September 1994
- New Brunswick & Nova Scotia, the Warren Wilkinson Collection; Canada, the Joseph Hackney FRPSL Collection*, David Feldman auction March 2011
- Österreich: Einzellose und Sammlungen von Verschiedenen Einlieferern*, Corinphila Briefmarken-Auktionen March 2010
- "Pacific Islands" Featuring Barry Gribble's Nauru and NWPI*, Prestige Philatelic Galleries, March 2011
- Revenue II: Railway and Telegraph Stamps: Europe and Overseas*, Robson Lowe, May 1972
- The Richard Pounder Collection of United States Possessions*, Heritage Auction Galleries June 2009



## *Mexico's Denver Printing of 1914* Wins Gold Medal at APS StampShow

Congratulations to Ron Mitchell, the library's newest literature gold award winner. Following years of collecting, research and interviews, and months of writing and editing, the RMPL published Ron's study of the Mexican revolutionary issues that were printed in Denver, in his book *Mexico's Denver Printing of 1914*. The hardbound 140 page book, is profusely illustrated (including a CD disk containing all 400 illustrations from the book). The Publications Committee of the RMPL worked closely with Ron in the production of the book (printed at the RMPL) which includes Sergio Lugo (Chair), Jim Kilbane, and Roger Rydberg.

## 2011 Bulk Auction Promises to be Best Ever - October 22, 2011 Almost Twice the Size of Last Year

by David Weisberg, Auction Manager

After a record breaking Rocky Mountain Stamp Show silent auction, the RMPL is following it up on October 22nd with what promises to be the best bulk auction we have ever held.

This year we have 168 lots with a total estimated and/or catalog value of nearly \$150,000, almost twice last year. The total of the starting bids is close to \$18,000.

I don't want to give the impression that these are all expensive lots. Out of the 168 lots, 60 have starting bids of \$25 or less. But there are also 12 lots with starting bids of \$400 or more!

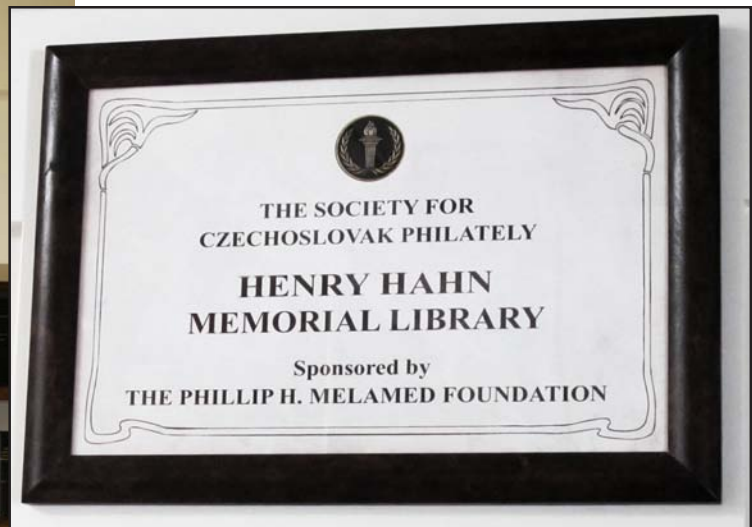
Compared to past years, this auction is heavy in United States material with 60 lots including plate blocks, first day covers, postal stationary and mint postage. One postal card lot is the remainder of the collection from which the high value lots in the

RMSS auction were taken.

There are also some very nice foreign collections including France, Portugal, Macau, Spain, Netherlands and Austria. Most are priced starting at 10% to 15% of catalog. In addition, there are some nice lots of supplies; albums, binders and pages.

We also have our normal selection of gold foil, Readers Digest and Commemorative Postal Society covers with starting bids set at about 5% of their original cost. Consider some of these for their educational value since many of the text descriptions are very well done.

The lots will be available for viewing the week of the auction. If you wish to review one or more of the lots prior to that time, please contact me through the library.



### Czechoslovak Society Installs Their Library at the RMPL

The Henry Hahn Memorial Library of the Society of Czechoslovak Philately (SCP) has opened in the library annex. The SCP national library presents nearly 55 linear feet of publications, periodicals, expert reading and other material for the study of philately and stamp issues of Czechoslovakia.

The SCP Library is an auxiliary library and not operated by the RMPL, but rather by members of the SCP. RMPL members are welcome to browse SCP material, but must arrange this and check out with Ludvik Svoboda (President of the SCP) or Howard Benson, member.

# World History Through Stamps



## OLLI Program Brings History Alive ... Through Stamps Facilitators and Presenters Needed for Winter Program

Last year the Rocky Mountain Philatelic Library conducted three popular 8-week programs sponsored by Denver University's Adult Lifelong Learning program called OLLI. The next term will begin on January 9, 2012 but the first meeting of new Facilitators will be held on October 17. We need one or two volunteers to be Facilitators for the next season. This involves attending the classes and keeping in touch with the speakers and class members on routine matters. Typically we need about five speakers or presenters. The opening and closing classes are general in nature and one class includes a meeting and tour of the RMPL. The Facilitator usually presents one of the five special programs. The Winter classes will be held in Golden, at the Jefferson Unitarian Church on 32nd Ave, 1-mile off of I-70. Contact Ron Hill or Steve Nadler at the RMPL for information or call Ron at 303-241-5409.



## New Roof Completed On the 2038 Building

Thanks to the work of Richard Palestro, Stan Kliebenstein, and Jim Moorman, a contractor was selected to replace the 16 year old roof of the RMPL building at 2038 S, Pontiac Way. United Materials, a roofing specialist, took on the job at a cost of \$28,500 - which we were able to pay in large measure because of the success of the RMSS Stamp Auction. The work was completed in 4 working days

## Great Cover, .... for a Moment!

by Joe Lambert



Figure 1

A couple of months ago another dealer sent me a letter- using a 25c postal stationery item and coming to the first class rate with the 19c of postage in the top row of Figure 1. The best part of this was that the post office had neglected to cancel the stationery or the stamps- wow!!

My sense was that the value of the Kansas-Nebraska sets (Scott 658-679), while soft, had not reached the postage stage by a substantial margin - especially for unusually well centered examples such as these!! So there must be more to it. My friend, the other dealer, was using stamps with fake overprints for postage!!

I could not recover the gum from the stamps - to see a most common giveaway of fakes - but I could recover the stamps and look at them. For this article, we will use the 9c value as the overprint is easiest seen on it.

On the bottom row of Figure 1 are two genuine 9c Kansas overprints. You will see minor differences in the typeface of the overprints- easiest seen in the serifs of the "s" in "Kans." There is also a color difference in the stamps themselves- the genuine overprints are in the 1929 shades of the rotary press 4th Bureau issue, most fakes are in a different shade. For the 9c, the genuine stamps are "dull rose" as opposed to fakes made from "bright rose" or "orange red" stock.

The most common unused fakes, however, can be readily detected from their gum! The genuine stamps all have gum breakers 22 mm apart, so generally only one gum breaker will be seen on each stamp - or two, spaced

all the way from top to bottom. Genuine Kansas-Nebraska overprints will also generally show vertical ridges in the gum. (The gum is applied in streams by a finely threaded roller, and the ridges come from its failure to coalesce before reaching the dryer in the production process). Sometimes the ridges are very faint - but the gum breakers tend to be distinct - and when too many are there, or they are too close, the overprint is a FAKE. Another sure sign of a fake is an overprint impressed into the stamp; the production process of the real overprints did not leave impressions.

RMPL's reference collection has many examples of such fakes. A visit to this collection can acquaint collectors with many of the kinds of skulduggery that can be performed to create seemingly valuable stamps from inexpensive stock. There is much reference material on faked overprints of the Kansas-Nebraska series. A quick overview is available in the classic *How to Detect Damaged, Altered, and Repaired Stamps* by Paul W. Schmid, a book which should be in every philatelist's library.

Note that the stamps on the great cover were still good for postage since they were unused, even though doctored, so there was no effort to deprive the post office of economic value. This creates a FAKE, rather than a forgery- where forgery (punishable by the laws governing counterfeiting currency) would arise from an effort to create something to deprive the post office of economic value.

In the next few issues we will look at some more FAKES.



## Mauritius The Play

Boulder,  
October 23  
4:00pm

A most delightful afternoon/evening of entertainment awaits you on **Sunday, October 23rd** in Boulder. Arrangements have been made for group attendance by members of the RMPL at the Boulder Ensemble Theatre Company for the matinee performance of MAURITIUS.

The play is based on the famous blue Mauritius stamp and what transpires when novices come to inherit a stamp collection and trying to deal with its disposition.

Contact Dalene Thomas at 303-986-6620 or e-mail at [dalene1@Champmail.com](mailto:dalene1@Champmail.com) if you'd like to attend. Tickets are \$20 apiece for the matinee performance; please advise Dalene ASAP as we only have a limited number of tickets.

The Boulder Ensemble Theatre Company is located at 2590 Walnut Street, Boulder, CO 80304. There is ample parking, and for those of you who would like to dine out before or after the performance there are several restaurants within easy walking distance. The BETC is a 501(c)(3) organization, now entering its sixth year of performances. Your support of their work is most appreciated.

### Reviews of the play *Mauritius*:

**THEATRE IN CHICAGO:** The stakes are high when half-sisters inherit a book of rare stamps that may include the "crown jewel" of the stamp-collecting world. The battle for possession takes a dangerous turn when three rival collectors enter the sisters' world, willing to go to any lengths to stake their claim on the find. Combining the best aspects of Hitchcock, Chandler and Mamet, *Mauritius* is a gripping blend of sharp comedy and heart-pounding drama that simmers with constant surprise.

**NEW YORK THEATRE GUILD:** Theresa Rebeck's new play *Mauritius* is one of those roundelays in which each of the five characters is trying to screw the others out of his/her interest in some very rare postage stamps and the whole thrust of the show is to find out which one(s) will be standing when the music stops and the final curtain falls. It is tightly plotted and full of the kind of snappy dialogue that one is familiar with from TV shows like *Law & Order*, for which Ms. Rebeck has written extensively.

## DONATIONS

Board Member Don Dhonau was incapacitated with surgery and recovery over the past month and has not been able to update the donation files. Don is back on the job now and the list of donations from July and August will be included in next issue.

## NEW MEMBERS

The library is pleased to welcome the following new members who have joined in the past two months.

John R. Scafe, Littleton, CO - Collects Worldwide

Robert (Bob) Shea, Centennial, CO -  
Collects US., German area, British Empire, Ireland

Arthur W. Weeden, Columbia, SC - United States Stamps

John C. Olson, Cornelius, NC

Kim R. Schroeder, Hugoton KS - Collects USA

Dennis R. Amos, York, SC -  
Topical-Geothermal, Wind Energy, Welding,  
Generators, Steam Turbines

## Don't Forget The BIG Bulk Auction

See Page 11  
October 22, 2011; 12:30pm Start

## SHOWS & EVENTS



Stamp Collecting is fun!

## NewMexPex 2011

The New Mexico Philatelic Exhibition

Our 6<sup>th</sup> annual postage stamp show with  
exhibits, door prizes, dealer tables and more.

Meadowlark Senior Center  
4330 Meadowlark Lane, SE, Rio Rancho, NM

October 15-16, 2011

9am-5pm Saturday, 9am-4pm Sunday

Free admission and parking, gifts for the kids,  
US Post Office on site with a special show cancel and  
lots of stamps.



## SECOND SATURDAY PROGRAMS AT THE LIBRARY

Second Saturday programs are sponsored by the library and attract a friendly group of folks who are interested in a specific subject or who are interested in learning more about an area of philately that may be new to them. Contact Jim Kilbane if you would like to present a program.

e-mail: [aurora\\_80017@yahoo.com](mailto:aurora_80017@yahoo.com)

**The programs begin at 9:00 AM and are over by 10:00 AM.**

**Doughnuts and coffee are complimentary and all are welcome.**

**SEPTEMBER 10, 9:00 AM**

*Streetcar Postmarks & Mail Handling*  
by Steve Nadler

Between 1891 and 1929 fifteen US cities implemented streetcar mail distribution services. The intent was to improve the speed and accuracy of mail handling by postmarking and sorting mail while in transit. The program will include examples from fourteen of the cities using postmarks on envelopes, postcards, and postal stationery. Postmark examples will also include origination, transit, and receiving usages.



**OCTOBER 8, 9:00 AM**

*Sydney Harbour Bridge, Its History on Stamps*  
by Ron Hill



Opened on March 19, 1932, it is the world's widest long-span bridge and also the fifth longest spanning-arch bridge in the world. From opening ceremonies in 1932 to the Sydney 2000 Olympics and since, the bridge has

been featured on numerous stamps, covers, and souvenirs by Australia as well as other countries.

## SHOWS & EVENTS

# NSDA STAMP SHOW IN DENVER

**Saturday, September 24, & Sunday, September 25, 2011**

**10:00am - 4:00pm - Jefferson County Fairgrounds**

**FREE Parking & Admission**

**Contact Ron Lampo at: [stamps@lampo.cnc.net](mailto:stamps@lampo.cnc.net)**

CHEYENNE PHILATELIC SOCIETY PRESENTS

P.O. BOX 21201 CHEYENNE WY 82003-7024

**WYPEX '11 STAMP SHOW**

MARK YOUR CALENDAR NOW

**OCTOBER 8 & 9, 2011**

SATURDAY 9:30 A.M. - 5:00 P.M.

SUNDAY 9:30 A.M. - 4:00 P.M.

HOLIDAY INN 204 W FOX FARM ROAD CHEYENNE WYOMING 82007

DEALERS & EXHIBITS

BUY • SELL • TRADE

U.S. & FOREIGN STAMPS • POSTAL HISTORY • TOPICAL • COVERS & MORE  
SHOW CACHET AND CANCEL • VOTE ON YOUR FAVORITE EXHIBIT





## What's Happening at the RMPL...

Hours: Monday, Tuesday, Wednesday, Friday, Saturday 10:00 AM - 4:00 PM  
 Thursday 2:00 - 8:00 PM. Closed Sundays and Holidays. Phone: 303.759.9921

Meeting times and places sometime change. It is best to call the library or the club to confirm the place and time. A calendar of reserved club times is kept by Operations Manager, Don Beuthel, at the library. Clubs should check the calendar regularly and notify Don (303-755-9328) of any changes or updates. All requests to reserve meeting time and space other than those listed here must be approved and scheduled by Don well in advance.

### SEPTEMBER 2011

**Sept. 3-5- CLOSED LABOR DAY**

**Sept. 3** - Meeting 10:00 AM

Scandinavian Collectors Club

**Sept. 7** - Meeting-Aurora Stamp Club.

6:30 PM trading, 7:30 PM meeting/program

**Sept 8** - Denver Post Card Club

Special Meeting - Contact Club

**Sept. 10** - 9:00 AM

**Second Saturday at the RMPL**

Program by Steve Nadler

*Streetcar Postmarks & Mail Handling*

**Sept. 10** - Meeting - 10:00 AM

Mexico/Latin America Study Group

**Sept. 10** - Meeting - 11:30 AM

Universal Ship Cancellation Society

*U.S.S. Colorado Chapter*

**Sept 10** - Meeting - 1:00 PM

TOPIC - Topical Philatelists in Colorado

**Sept. 14** - Meeting - 7:00 PM

Denver Germany Stamp Club

**Sept. 15** - Meeting - 7:00 PM

RMPL Board Meeting

**Sept. 17** - 9:30 AM - Denver Young Stamp Collectors

**Sept. 18** - Meeting - 2:00 PM

Great Britain & Commonwealth Collectors

**Sept. 24** - Meeting 10:00 AM FDC Chapter

**Sept. 27** -Meeting 7:30 PM Rocky Mtn Stamp Show

### OCTOBER 2011

**Oct. 1** - Meeting 10:00 AM

Scandinavian Collectors Club

**Oct. 1** - Meeting - 1:00 PM

TOPIC - Topical Philatelists in Colorado

**Oct. 5** - Meeting-Aurora Stamp Club.

6:30 PM trading, 7:30 PM meeting/program

**Oct. 8** - 9:00 AM

**Second Saturday at the RMPL**

Program by Ron Hill

*Sydney Harbour Bridge-Its History on Stamps*

**Oct. 8** - Meeting - 10:00 AM

Mexico/Latin America Study Group

**Oct. 8** -Meeting - 11:30 AM

Rocky Mountain Aerophilatelists

**Oct. 12** - Meeting - 7:00 PM

Denver Germany Stamp Club

**Oct. 13** - Meeting - 6:30 PM

Denver Post Card Club

**Oct. 15** - 9:30 AM - Metro Denver Young Stamp

Collectors Club

**Oct. 16** - Meeting - 2:00 PM

Great Britain & Commonwealth Collectors

**Oct. 22** - Meeting 10:00 AM FDC Chapter

**Oct. 22 -RMPL BIG BULK AUCTION**

**Oct. 23 -MAURITIUS Play in Boulder**

**Oct. 25** -Meeting 7:30 PM Rocky Mtn Stamp Show

*Scribbles* is published bimonthly by the Rocky Mountain Philatelic Library, Editor, Ronald Hill, 2038 S Pontiac Way, Denver, CO 80224. The Rocky Mountain Philatelic Library is a chartered Colorado nonprofit corporation and an IRS designated 501 (c)3 charitable organization. Membership subscriptions over that for the regular membership, and donations of appropriate philatelic materials, are deductible for U.S. income tax purposes.

#### RMPL BOARD OF DIRECTORS

President: Sergio Lugo - Operations Manager: Don Beuthel - Vice-President: Jim Kilbane  
 Corresponding Secretary: Don Dhonau - Recording Secretary: Paul Lee - Treasurer: Bob Blatherwick  
 Directors: Jan Marie Belle - Roger Cichorz - Dalene Thomas - David Weisberg. Emeritus: John H. Willard