

Scribblings

...from the Rocky Mountain Philatelic Library

Ronald Hill, Editor



Ellengail Beuthel, Librarian

Vol. 19 - No. 2
www.rmpldenver.org

2038 South Pontiac Way, Denver, CO 80224
303.759.9921

March-April 2011
Email - rmpl@qwestoffice.net

IN THIS ISSUE

- 2011 RMSS Auction.....1-2
- Porto Rico Railways and
Sea Post..... 3-5
- The Prez' Observations ...6
- Gold Medal Night.....6
- RMPL Annual Meeting.....7
- The Arnold Machin
Letters.....8-9
- Colorado Postal Past.....10



- Authentic Ottmar Zieher
Post Card.....11
- What's New on the
Shelves.....12-14
- Periodical Pick'n's.....14
- News & Happenings15
- Forgery Corner.....16
- Great Britain Club
Challenge.....16



- World Cup Soccer (Round)
Stamp.....17
- OLLI Programs17
- Donations18
- New Members18
- Shows & Events19
- Second Saturdays.....19
- Calendar.....20

2011 RMSS Silent Auction To Be Best Ever

by David Weisberg

So why is this year's auction going to be so great? Two reasons, nearly two thirds of the auction will be U.S. lots and the material is of excellent quality. Leading the auction will be over 200 lots of U.S. material from the Bill Stolfus donation. Most of this is mint never hinged material from the 1890s through 1930's as well as some magnificent postal cards.

Each year the silent auction at the Rocky Mountain Stamp Show is one of the most important fund raisers for the Rocky Mountain Philatelic Library. The Show and Auction will be held May 13, 14, 15, and promises to be the best we have ever held. Traditionally, the U.S. material, which has made up about a third of the lots in recent years, has done best with over 80 percent of these items selling. One example in this year's auction is a VF mint Scott 89,



the 10 cent E grill. It has a recent certificate stating that it is a genuine E grill but unfortunately is regummed. With original gum this stamp has a Scott catalog value of \$5,250.

We have a starting bid of \$1,500 on this one. There are many other fine stamps including Columbians, Trans-Mississippi, Pan American, Louisiana Purchase and Washington Franklins, nearly all mint in VF or better condition and most NH. Mint, NH sets of both the Kansas and Nebraska overprints are also included.



There are some excellent airmail stamps including Scott C1 - C6 and a set of Zeppelins. As well as being mint NH some of these items are graded Extra Fine or better and starting prices have been set accordingly.

There are another 200 lots of some very nice U.S. material. The foreign lots include some very attractive Japanese material. One collector noted that these lots consist of all the key material he has been looking for during the past 20 years. There are also some nice France, Portugal, Spain and Germany lots.

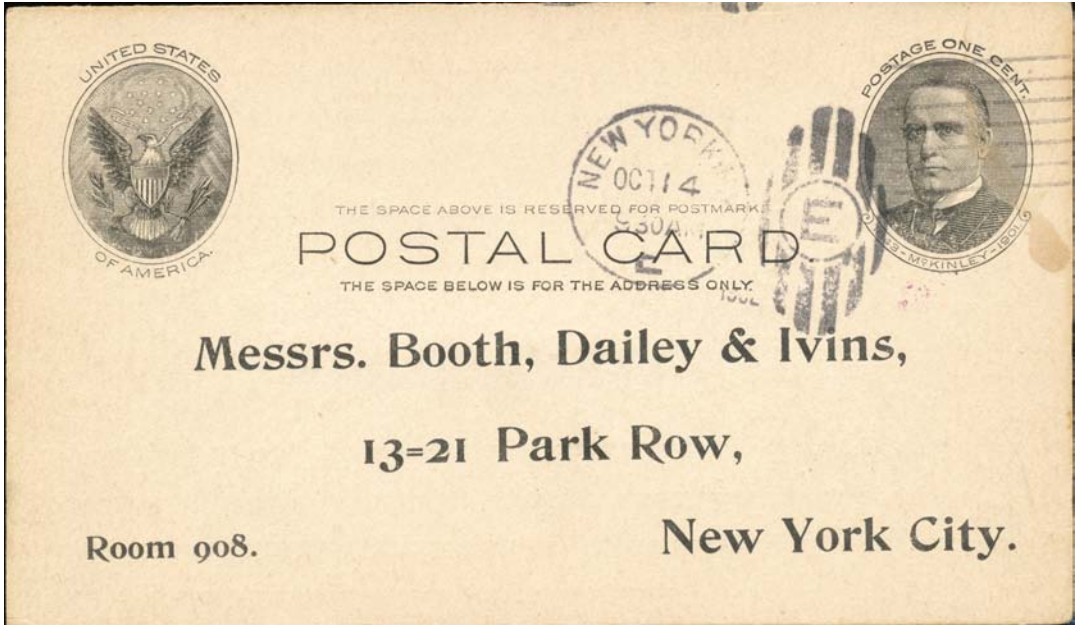
The postal card section contains many of the early issues in VF condition. Two particularly rare cards stand out (see next page). One is a front facing Harding, Scott UX17, preprinted and used. It is a newly identified card that has been added to the United Postal Stationary Society census. Its current catalog value is \$3,750 and we have a starting bid of \$1,500. An unused sample of this card recently sold for \$16,000 at auction.



Continued on page 2

Silent Auction to be Best Ever

Continued from page 1



LOT # 191
Scott UX17

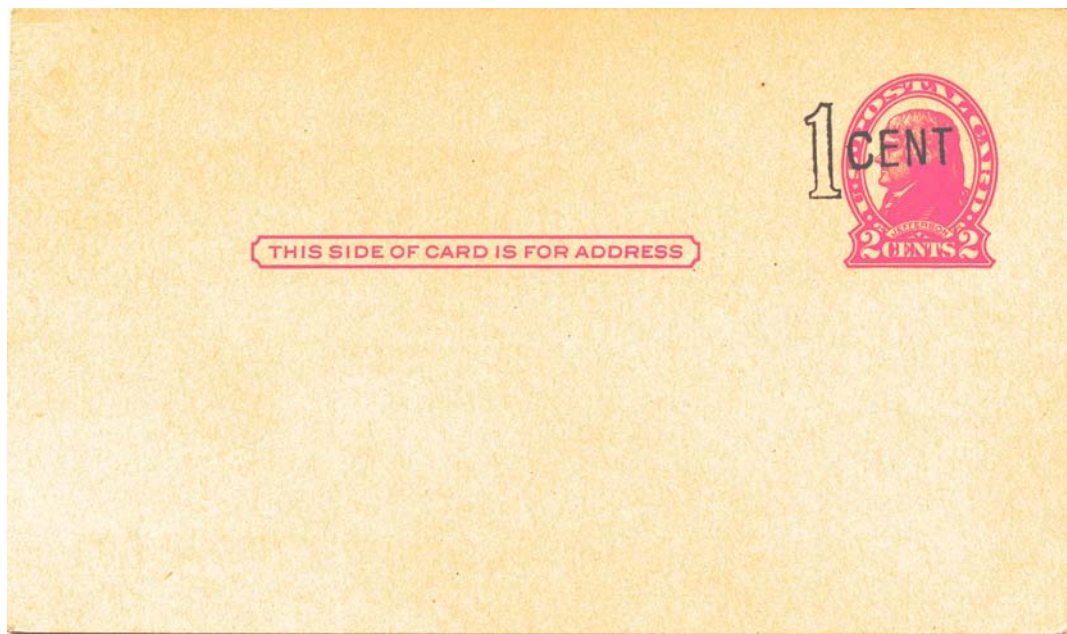
One of the rare postal cards in the auction is a front facing Harding, Scott UX17, preprinted and used. An interesting story goes with this card but suffice it to say that it is a newly identified card that has been added to the UPSS census. Its current catalog value is \$3,750 and it has a starting bid of \$1,500.

Oct. 13th 1902.
Dump at 2:30 p.m.
umped at 8:40 p.m.
Dump at 3:35 a.m.

Arrived at _____
No. of Loads 285

State here Supplies wanted; if you sustained any damage, and condition of your Boat:

Had 3 feet of water on both sides.
Tug H. G. Runkle pumping from 3:25 to 5th am.
A. W. B. Cyo. Winberg Captain.



The second rare postal card in the auction is a mint copy of Scott UX31, a one cent overprint with an APS certificate of authenticity. The starting bid is \$2,000 against a catalog value of \$4,750.

LOT # 200
Scott UX31

Porto Rico Railway and Sea Post Cancellations

by Sergio Lugo

When faced with the question “was there railroad mail service on the island of Puerto Rico (Porto Rico)?” I would definitely answer, “Yes, but....!!!”

The answer is muddled by the practices of postal authorities. During the period of Spain’s dominion over the island, there definitely was railroad mail service, as reflected by Figures 1 through 8. Figure 1 is a map of the island showing the route of the American Railroad Company of Porto Rico. As can be seen, the rails ran northwestward/southeastward between Ponce and Aguadilla, and eastward/westward between Carolina to Camuy. A section of the proposed railroad between Camuy and Aguadillas (totaling 30 miles) was never completed.

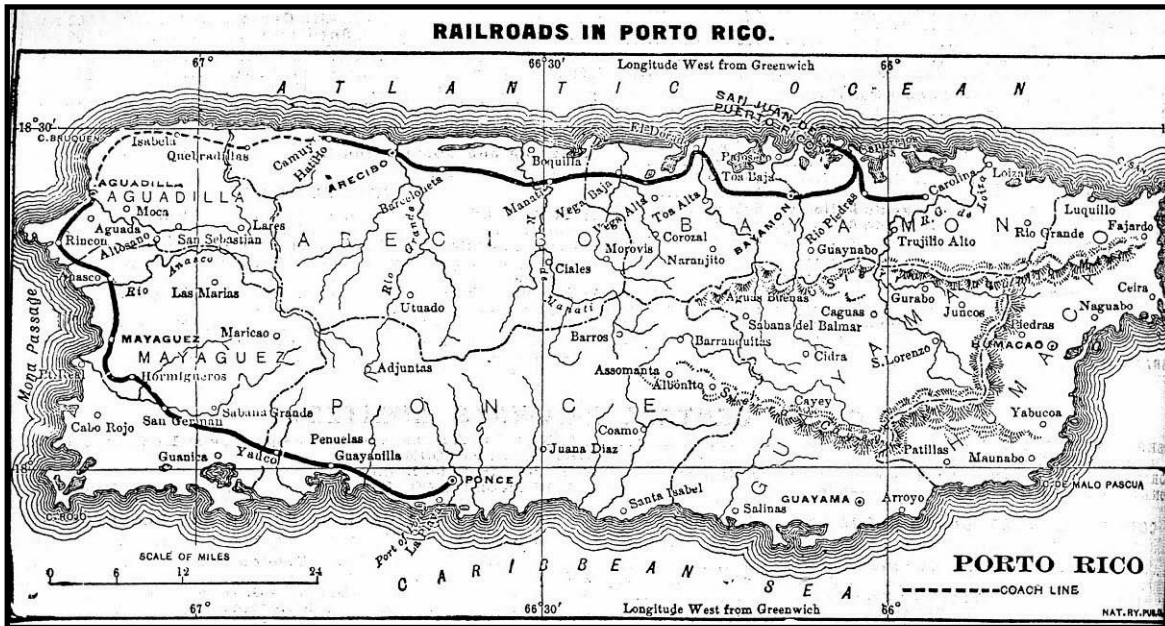


Figure 1

Predating the American Railroad (above) were Spanish lines. Operating as early as 1891, the company was the Compañia de los Ferrocarriles de Porto Rico, with service to Arecibo. The routes that existed under the Spanish were simply taken over (I assume by purchase) by the American Railroad Company following the Spanish American War of 1898. Figure 2 (below) is an example of a rubber stamp applied to a Porto Rican letter carried on board the railroad (in Spanish “ferrocarril”).

As most students of Latin American postal history know, the railway mail service of much of Latin America was characterized by an informal network of railroad conductors who carried mail on the train to destinations requested by the sender. This system (known as the “ambulante” network) may have been a paid service in individual Latin American countries; that is the sender had to pay a fee for the transport of his/her mail. Railroad conductors taking on mail invariably developed the habit of applying rubber stamp cancellations to the mail, suggesting that either a governmental agency supplied the rubber stamp, or the conductor (paying out of pocket for the rubber stamp) was reimbursed for the service. Towards the end of the 19th century, “ambulante” networks became organized into railway mail service agencies.



Figure 2



Figure 3

In the case of Porto Rico, it is known that an ambulante network existed from at least one cancellation that has been found, illustrated in Figure 3. That conductor was on a line along the southern coast of Puerto Rico, between Ponce and Yauco a distance of approximately 25 miles. It seems likely that the Yauco terminus continued westward towards Mayaguez.

(continued)

Porto Rico Railway and Sea Post Cancellations *(continued)*

More definitive evidence of the existence of a railway mail service exists with the onset of American hegemony over the island in 1898. This exists in three forms, specifically: (1) the American Railroad Company of Porto Rico, (2) land based railroad mail service cancellations, and (3) the seaborne railroad mail service and sea post. The last of these is where confusion tends to arise between railway historians and seapost historians. But, first, let's go back to the American Railroad Company of Porto Rico.

As we have seen, the American Railroad Company's tracks apparently covered only parts of the island through the early 1910s. **Figure 4** is a post card view of one of the company's locomotives, and its passenger cars – apparently stopped for a picture taking exercise. **Figure 5**, on the other hand, is a picture postcard view of the railroad depot at San Juan, Puerto Rico. The finish, and crispness, of the postcards suggest production in the late 1920s or early 1930s

The second means of supplying evidence of the existence of a railway mail service during American hegemony is the obvious one of finding postal markings showing that service. In this instance, Charles Towle documented the existence of at least two RPO cancellations. Illustrated in **Figures 6** and **7**, the routes for the railway mail service were separated by a period of forty years. The San Juan & Camuy cancellation illustrated in **Figure 6** (# 399 A1 in The United States Railway Post Office Postmark Catalog) suggests that the Atlantic coast leg of the railroad was fully operational within two years of the American conquest of the island.



Figure 4 (above); Figure 5 (below)



Caribbean Island. But that designation proved unsatisfactory within the course of roughly a decade. In 1912, the U.S.P.O. decided to follow worldwide practice, redesignating the route between the two points a "Sea Post", and abolishing (in all but the memory of stamp collectors) the RMS route between the two points

RMS service was contracted with two shipping lines, based in New York harbor. They included the "Red D Line", with service to Porto Rico and to the northern shores of South America and the New York and Porto Rico Line. By the close of the 1900s, however, it appears that the Red D Line had disappeared from the scene, with the route becoming the exclusive monopoly of the New York & Porto Rico Line. **Figure 8** represents the shipping schedule of the Red D and the New York & Porto Rico Lines in 1907, while **Figure 9** is a baggage label of the New York & Porto Rico Line. The RMS route, following U.S.P.O. conventions, was named for the destination points of the service, not necessarily the name of the shipping line.

A variety of cancellation devices were placed on board the ships providing the service. Those cancellations have been well documented by Phillip Cockrill in his booklet *United States Sea Post Cancellations Part II* and by Charles Towle in his *The United States Railway Post Office Postmark Catalog*. Unfortunately, the cataloging system used by both authors are not at all similar, reflecting their respective tastes in developing cataloging numbers. Furthermore, in the case of Charles Towle, once the designations were switched to Sea Post, *The United States Railway Post Office Postmark Catalog* ceases cataloging of the cancellations, whereas Cockrill expanded upon his cataloging system to incorporate Sea Post with RMS cancellations.

These lapses, omissions and inclusions create some confusion to the student of Puerto Rican cancellations, including the author. Furthermore, a previously unrecorded RMS cancellation was discovered by the author in a post card purchase dating back several years ago.

(continued)



Figure 6



Figure 7

Figure 7, on the other hand, suggests that a route had been laid directly across the cordillera between Puerto Rico's two largest cities of San Juan and Ponce (# 399-B-2 in The United States Railway Post Office Postmark Catalog). That route, completed in 1907, probably followed the route of the old Spanish military road between the two cities, that was eventually taken over by the American military and driven over by the author's father while in the service during 1940 and 1941. That route is also now the modern 4 – 6 lane highway between the two cities that would otherwise be labeled an interstate highway. The Train 2 indicia in the cancel suggests multiple trains on this RPO route.

The confusion alluded to earlier, sets in with the U.S. Post Office's treatment of mail service to Porto Rico after the takeover of the island. Once that had occurred, the U.S.P.O. decided to name the shipping lines railroad mail service routes, rather than (as in the rest of the world) sea post routes. This had been customary practice of the U.S.P.O. since the 1860s. That is, navigable rivers and shorelines were treated as another route for the transport of mail, akin to the rail lines that had begun dotting the American landscape. Rather than creating a separate distinction within the U.S.P.O. (i.e. sea post), the familiar RMS of the railway mail service was turned to for the letting of contracts for ships to transport mail over the 1,900+ nautical miles between New York City and Porto Rico. Thus, RMS service existed over the imaginary railroad line between the continental U.S. and the

| Cancel Type And Use Dates | Shipping Lines & Ships Involved | Notes |
|---|---|--|
| Cockrill = PR 1 Towle = E-13-a  | Red D Line Or N.Y. & Porto Rico | CDS contains RPO, killer showed RMS. CDS contains "North" or "South" Cancels used on board vessel. Prior to WWI: one postal clerk/steamer; weekly sailings . After 1920, two postal clerks/ship; 2 sailings per week in each direction First voyages called at Mayaguez, not San Juan. Railroad clerks got off at Mayaguez, caught train to San Juan and boarded New York bound ships. Not unusual to observe cancel without the year date. In fact finding a complete year is considered a rarity. |
| January 5, 1901 To 1907 Cockrill = PR 2 Towle = E-13-b  | Same as above | Same as above |
| Use dates same as above | | |
| Unidentified by Cockrill or Towle; discovered by Lugd  | | Unreported N.Y. & San Juan RPO cancel, shown in original state at far left and cleaned up as much as feasible to the right. |
| Towle = E-13-c  | | |
| Towle = E-13-d  | | |

To account for that missing cancellation and to juxtapose as easily as possible Cockrill's and Towle's cataloging systems, the table on this page has been constructed to show the cancellations cataloged by each. This closes this discussion of the Porto Rican/Puerto Rican railway mail service and Sea Post service.



RED "D" LINE.
ESTABLISHED 1864.
PASSENGER AND U. S. MAIL CONTRACT STEAMERS.
New York, Porto Rico & Venezuela.
SAILING AS FOLLOWS:
From PIER 11, BROOKLYN (departing Wall Street Ferry), at 12:00 noon.

| STEAMERS | LEAVES | ARRIVES | LEAVES | ARRIVES |
|------------|--------|---------|--------|---------|
| NEW YORK | 12:00 | 12:00 | 12:00 | 12:00 |
| PORTO RICO | 12:00 | 12:00 | 12:00 | 12:00 |
| VENEZUELA | 12:00 | 12:00 | 12:00 | 12:00 |

THE NEW YORK & PORTO RICO STEAMSHIP CO.
FLEET CONSISTS OF THE FOLLOWING AMERICAN STEAMERS:
Caroline, 3,500 Tons, Coamo, 3,000 Tons, Santarce, 1,800 Tons, San Juan, 2,000 Tons, Arkadia, 2,200 Tons, Pathfinder, 1,800 Tons, Puerto Rico, 1,800 Tons, Santa Rosa, 1,800 Tons, Santa Rosa, 1,800 Tons.







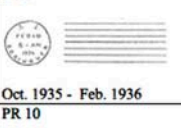
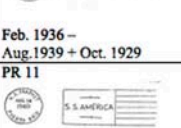


SAILING LIST, 1909.

| STEAMER | LEAVES | ARRIVES | LEAVES | ARRIVES |
|------------|--------|---------|--------|---------|
| NEW YORK | 12:00 | 12:00 | 12:00 | 12:00 |
| PORTO RICO | 12:00 | 12:00 | 12:00 | 12:00 |
| VENEZUELA | 12:00 | 12:00 | 12:00 | 12:00 |



Figure 9

Figure 8

| | | |
|---|---|--|
| Cockrill = PR 3  | Red D Line No. 2 SS Caracas No. 5 SS Maracaibo No. 6 SS Philadelphia N.Y. & Porto Rico: No. 1 No. 3 No. 4 Ship Names Unknown No. 7 No. 8 Definitely on service SS Carolina, Ponce, Coamo Possibly: SS San Juan, Arkadia Santarce or Pathfinder | Generally considered a scarce postmark SS. Zulla was another Red D line ship Two sailings per week in each direction |
| PR 4  | N.Y. & Porto Rico No. 1: SS. Ponce No. 2: No. 3: | These cancellations are considered very scarce. |
| July 9, 1921 - To 1923 PR 5  | N.Y. & Porto Rico Sea Post No. 1 Sea Post No. 2 Sea Post No. 3 | Very similar to PR 3, but year date in CDS Sea Post No. 2: used during May 1925 Sea Post No. 3: January to November 1923 |
| July 1, 1923 To 1925 PR 6  | N.Y. & Porto Rico Sea Post No. 1: S.S. Coamo Sea Post No. 2: S.S. San Lorenzo | Sea Post No. 1: as early as 2/11/1926 to April 1940 Sea Post No. 2: 1927 to February 1931 |
| 1926 - 1940 PR 7  | N.Y. & Porto Rico Sea Post No. 1: S.S. Coamo Sea Post No. 2: SS San Lorenzo Sea Post No. 3: SS. Borinquen | Flag Cancellations |
| 1928-1934 1928-1931 1931-1935 PR 8  | N.Y. & Porto Rico | |
| Feb. 28, 1931 to Dec. 29, 1941 PR 9  | N.Y. & Porto Rico SS Coamo SS Borinquen | Machine Cancel |
| Oct. 1935 - Feb. 1936 PR 10  | N.Y. & Porto Rico SS Coamo SS Borinquen | Machine Cancel |
| Feb. 1936 - Aug. 1939 + Oct. 1929 PR 11  | United States Line SS America N.Y. & Porto Rico SS Coamo SS Seminole | August 14, 1940 Issued to SS Coamo in 1941 and 1942 and quite probably the SS Seminole after January 3, 1942 Discontinued Feb. 16, 1942 due to German U Boats. |
| PR 12  | N.Y. & Porto Rico SS Coamo SS Seminole | Issued to SS Coamo in 1941 and 1942 and quite probably the SS Seminole after January 3, 1942 Discontinued Feb. 16, 1942 due to German U Boats. |
| 1940 - 1942 | | |

The Prez' Observations

A number of momentous decisions were made by the RMPL at the recent Annual Membership/Board meeting, which brings to mind the adage "how fleeting are the moments....."

The Board decided to use library funds (1) to pay down \$50,000 of the principal of the RMPL's mortgage debt incurred with the acquisition of the 2048 S. Pontiac Way property and (2) to replace the roof at our original 2038 S. Pontiac Way property at a cost of about \$31,000.

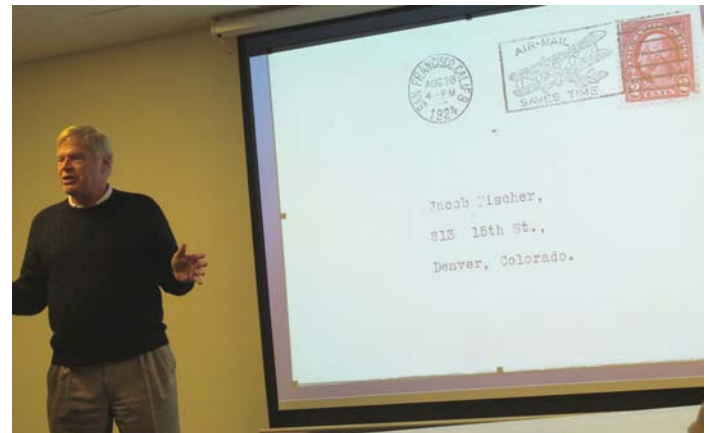
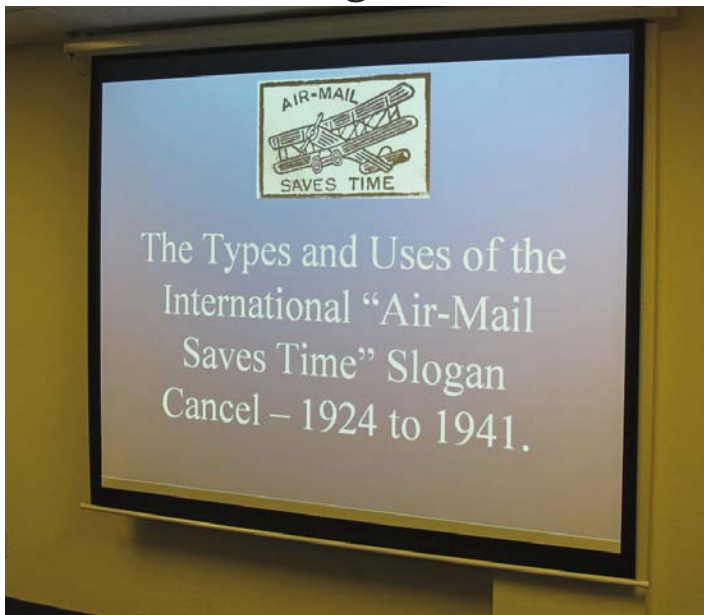
These two decisions amount to a grand total of new expenditures in the range of \$80,000. The paydown of the mortgage itself will generate a savings of about \$95,000 in interest and will reduce our total debt for the building by roughly \$145,000 with the \$50,000 paydown applied immediately to the principal. This paydown reduces the outstanding principal to roughly \$178,000; and reduces the term of our loan by about 6 years.

The Board decided that after several years of repairing leaks that it was also an opportune time to replace the roof, last refurbished when we moved into the building in 1993; eighteen years of life that substantially surpassed the warranty on the roof.

In the blink of an eye, \$80,000 was gone. Of course, some of the funds came from the recent generous bequest of the late Bill Bauer. I believe that the Board has put those funds to good use as we continue to manage the Library's funds as wisely as we can for the present and for the future. As we have successfully done for 18 years, we will continue to rebuild the RMPL's reserves to meet contingencies, foreseeable needs and surprises as the years go by through membership dues, stamp sales, and our increasingly high quality auctions. Generous contributions and donations from members are always welcome and appreciated and are vital to the continuing health of the library.

Sergio

Gold Medal Night at RMPL



The most recent "Gold Medal Night" was on Friday, February 25. The honored exhibitor was David Reitsma (above) with his Gold Medal exhibit "Types and Uses of the International 'Air Mail Saves Time' Slogan Cancel 1924 - 1941" winner of Gold Medals in 2010 at the Garfield-Perry Stamp Show and from the AAPE at ROMPEX.

The next "Gold Medal Night" will be Friday, May 20, and will honor Marc Gonzales and his Gold Medal winning exhibit at the recent ARIPEX Show.

These Gold Medal Award Nights provide an opportunity for other recent gold medal winners at national stamp shows to be recognized and to provide attendees insight into the process involved in developing gold medal exhibits. In this way, we hope to provide a question and answer/analysis forum for the audience to learn more from "those that have been there" about exhibiting and in a variety of philatelic topics.

The RMPL launched its new activity to promote philatelic exhibiting by members who have wanted to exhibit and have searched high and low for the right process by which to take that fateful step.

Our first "Gold Medal Night" was held in the RMPL meeting room on Friday, November 12, 2010 with Steve McGill presenting his Gold Medal exhibit, "Britain's Marvelous Machines". He outlined for the audience the early steps in building the exhibit as well as aspects of the exhibiting process that he has learned in the past year from his achievements at ROMPEX and CHICAGOPEX.

ANNUAL MEMBERSHIP / BOARD MEETING, JANUARY 27, 2011

In the last issue of *SCRIBBLINGS*, the report listed the responsibilities taken on by RMPL Board members and RMPL volunteers. This time, it will focus on decisions and issues faced by the Board. A number of RMPL members were in attendance.

BOURSES: The Board voted against commercially operated bourses in the community room for several reasons, most importantly that IRS provisions prohibit the enrichment of individuals as a consequence of non-profit status. The Board left open the sponsorship of bourses directly by the RMPL.

BUDGET FOR 2011: Time constraints did not permit finalizing of the budget for 2011. After five hours of deliberations, it was decided that an electronic vote of the Board would be held. Most details of the budget had been discussed in the prior 2 Board meetings.

CHARITABLE STATUS CONSIDERATIONS / PROPERTY TAXES: Discussion is deferred to March.

DENVER EAGLES BOOK: The book has recovered 63% of the expenses allocated by the Board. With roughly 34 hard copies remaining, it is anticipated that the RMPL will realize a small profit from sales.

DONATION POLICY: First drafted by former President Mitchell, the policy has been revised, and is now available as a handout at the front desk.

DONATIONS: 509 letters for donated material were sent out in 2010, compared to 493 in 2009.

EBAY: The RMPL is exploring an alternative method of disposing of books for sale so as to benefit RMPL members directly. The new ideas will be covered in *SCRIBBLINGS* in the next several issues.

FUND RAISING: Pledge amounts for 2009 and 2010, as well as realizations from the auctions and special sales of the past two years was reviewed in detail to adequately familiarize the Board with the anticipated projections for these two categories of fund raising in 2011.

GARAGE REMODELING: Conversion for usable space is proceeding. Furring for wallboard placement is nearly completed, with a section left unfinished for the eventuality of a connecting passageway to 2038. As funds permit, the Czech Philately space will be finished (in process), researcher work area is to be installed, and space allocated for newspapers etc. as well as potential space for another society library.

GARDENS: The Board agreed to allocate \$300 of unexpended 2010 funds and \$200 of 2011 funds for seed money in the gardens. It is anticipated that these funds will complete the flagstone patio areas.

INSURANCE COVERAGE: For the first time, a competitive quote process was used between our current carrier (CIS/CAN) and Hugh Woods (the provider for the Bellefonte, PA. APS Center). A number of unique provisions were dealt with in securing quotes that helped shed light on our current coverage. Liability, property and book coverage is included as well as coverage for Director's & Officer's insurance; the latter was recommended by the attorney who finalized the paper for the 2048 S. Pontiac Way property. The

Board's decision was to retain our current carrier, in light of the large differential in premiums quoted.

LONG RANGE BUDGET: The Board agreed to budget priorities as follows: #1. Pay down of Mortgage; #2. Completion of electrical work at 2048/7070. #3. Roof replacement at 2038 #4. Garage work at 7070 #5. Parking lot paving at 2048. #6. Budget or lease of new copier. #7. Increase in the funds set aside for the Librarians fund. #8. Reintroduction of a building fund. Except for #'s 1, 2, or 3, all the priorities are subject to funding availability in 2011.

MEMBERSHIP and MEMBERSHIP DUES: After reaching 509 members, the year ended with 495 members, a small increase from 2009. The by-laws require a review of membership dues in January. This year's review determined that costs for producing and mailing *Scribblings* has now reached an annual \$18.50 level, while one third of the membership is at the \$15.00 level. Options being reviewed include an indicia for mailings (rather than stamps). The matter will be explored again at the March Board meeting.

MORTGAGE PAYDOWN: On a vote of 6 in favor to 1 opposed, the Board decided to pay down the mortgage by \$50,000. That lowers the mortgage principal to the \$175,000 range and will eliminate \$95,000 in interest payments, as well as 78 months of payments. This was the major decision of the evening.

ROOF REPLACEMENT: By a vote of 4 in favor to 3 opposed, the Board decided to replace the roof of the 2038 S. Pontiac Way. building The roof was first replaced in 1993; meaning we got nearly 18 years use out of it. Leaks in various places had bedeviled the building in the past 3 years. \$31,000 is allocated for a membrane type roof replacement with foam risers to introduce a 6 inch slope for positive drainage. The work will be completed in July or August. This was the other major decision of the evening.

TECHNOLOGY ACTIVITIES: A new PC computer has been purchased to replace the previously donated public computer at the front of the library. 2011 will witness a reduction in technology related fees since 2 year contracts were signed in 2010. The technology committee will be presenting its recommendations to the Board in March regarding lowering of the cost of online borrowing of books from the RMPL. A chart showing Web Site hits was developed and distributed by the webmaster. The table shows that the RMPL website is being visited 80 times a day and 9464 visits since the counter's installation. Stamp club information has been sought in 651 visits.

2010 FINANCES: A thorough review of the RMPL's income and expenses was provided as a background for the analysis needed for the evening's primary decisions.

VOLUNTEER ACTIVITIES: The volunteer dinner is more than likely to be held at the White Fence Farm on the first Friday of December, subject to verification of a report of the restaurant's bankruptcy. Additionally, to be resolved in March, is the matter of the hosting of a general pot-luck at the RMPL's gardens in August. Shirt orders are still being taken.

YOUTH ACTIVITIES: The RMPL Board agreed to allocate \$500 in funds to youth activities.

The Arnold Machin Letters

by Steve McGill

Earlier in 2010 I had the good fortune to make the acquaintance of Mr. Robin Tibbenham, of the UK, and he was kind enough to share two related letters, written by Arnold Machin. They are of interest in that they recount not only A. Machin's use of the Lord Snowdon photographs, originally used for Machin's coinage design, but also Mr. Machin's interest in producing a book on the development of his definitive stamp.

For those of you who are not familiar with Arnold Machin, OBE, RA, (1911-1999) he was a sculptor working and living in the UK who came to receive a commission to first create coinage for Queen Elizabeth and later to design what became known as the Machin Head definitive series of stamps. This series has been in continuous production since 1967 and has amassed over 5000 catalog varieties and includes 100+ denominations.

Arnold Machin had always maintained that the development of his stamp had originated with his work on the coinage; that after reviewing the initial sculptures (bas reliefs) he elected to change the tiara from the coinage to the Queen Victoria diadem. After Machin's death, one of the photographers of the Queen, Professor John Hedgecoe sued Royal Mail for recognition as the originator of the image used to develop the diadem head. Since both Machin and Hedgecoe are now dead there will probably never be a true determination of primary influence in the minds of many Machin enthusiasts, despite the legal ruling.

The first communication shared by Mr. Tibbenham is a copy of a three page letter supplied to him, by Mr. Alan Benjamin of B Alan Stamps Ltd. This letter is a response by A. Machin to Mr. Negus, then editor of the *Connoisseur Catalog*, who had requested additional information on the development of the definitive series.



Arnold Machin, center, at the time of the release of the original stamp design in 1967.

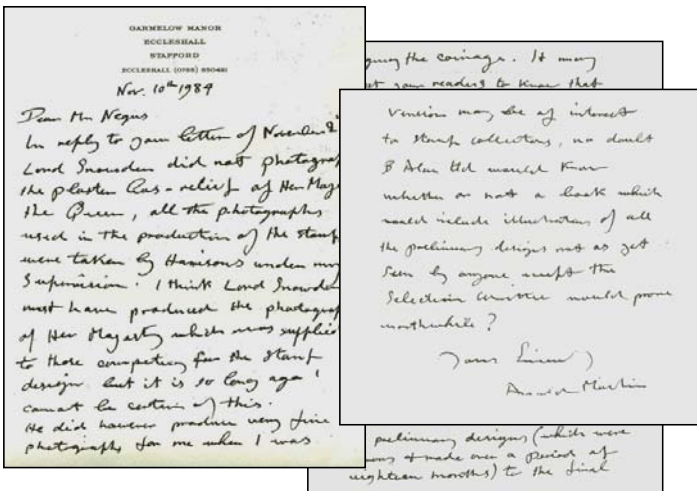
the photographs of Her Majesty which were supplied to those competing for the stamp design but it was so long ago I cannot be certain of this. He did however produce very fine photographs for me when I was designing the coinage. It might interest your readers to know that the bas relief portrait which was used for the stamps was created largely from studies I had made earlier from the coin design.

Her Majesty gave me several sittings at that time & the information acquired was invaluable to me when I was asked to design the stamp.

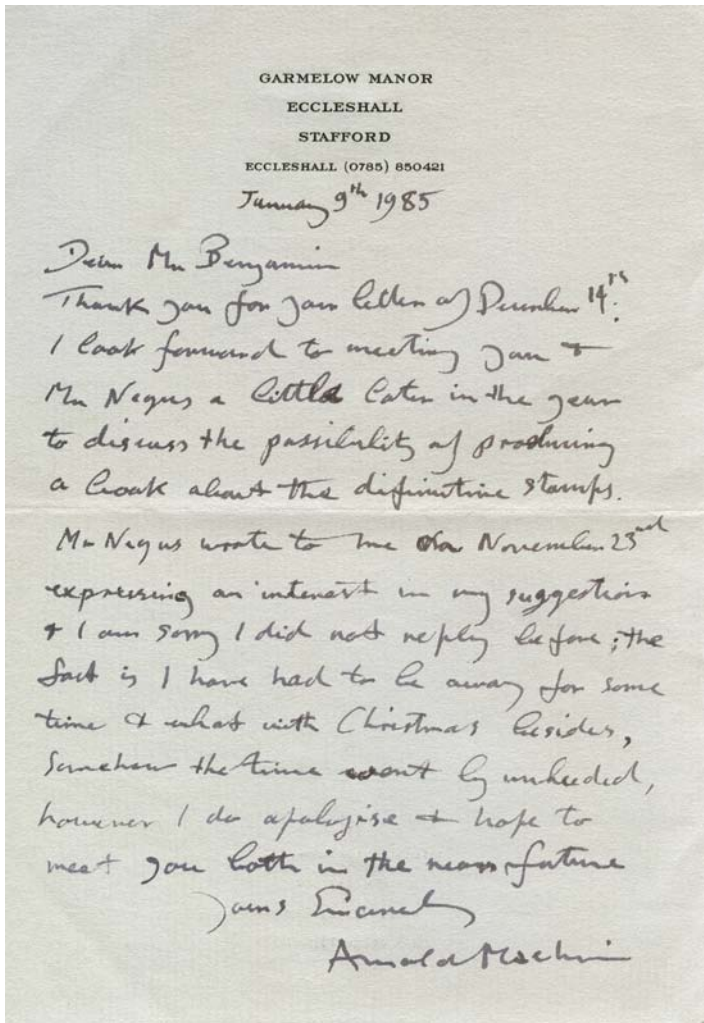
I know from the many letters I have received from philatelists that the interest shown in the definitive stamps is considerable and it has occurred to me that a complete account of the stamps from preliminary designs (which were numerous & made over a period of eighteen months) to the final version may be of interest to stamp collectors, no doubt B Alan Ltd would know whether or not a book which would include illustrations of all the preliminary designs not as yet seen by anyone except the selection committee would prove worthwhile. Yours sincerely, Arnold Machin"

The statements in this letter seem at odds with the contention by Professor John Hedgecoe that it was his photograph that was used by A. Machin to produce the definitive. Machin did change the tiara used in his coinage design to the diadem first worn by Queen Victoria and later in the Wilding printings. The Hedgecoe photograph shows the Queen wearing this diadem. Royal Mail's decision to acknowledge Mr. Hedgecoe's work has been controversial to say the least.

The second letter, an original, written to Mr. Benjamin, by Arnold Machin, discusses his interest in producing an autobiography.

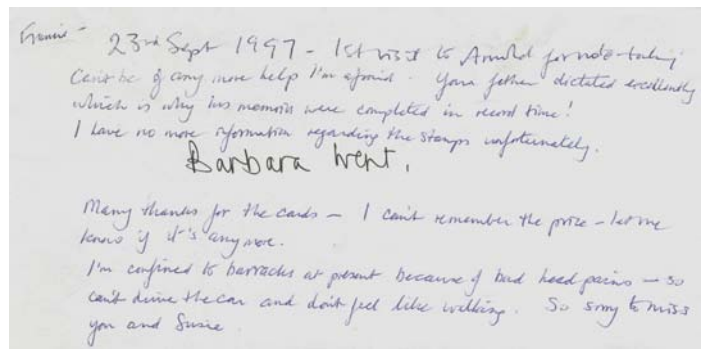


Text: (above) "Nov. 10th 1984 Dear Mr. Negus In reply to your letter of Nov 2nd Lord Snowdon did not photograph the plaster cast relief of Her Majesty the Queen, all the photographs used in the production of the stamps were taken by Harrison's under my supervision. I think Lord Snowdon must have produced



Text:(above) January 9th 1985 "Dear Mr. Benjamin, Thank you for your letter of December 14th. I look forward to meeting you and Mr. Negus a little later in the year to discuss the possibility of producing a book about the definitive stamps. Mr. Negus wrote to me on November 23rd expressing an interest in my suggestion & am sorry I did not reply before; the fact is that I had to be away for sometime & what with Christmas, besides, somehow the time went unheeded. However, I do apologise & hope to meet with you both in the near future. Yours Sincerely, Arnold Machin".

Followers of Arnold Machin's work are aware that his interest in producing a book, expressed in the first letter, above, covering the development of the definitive series came to naught, reportedly due to Royal Mail intransigence. Instead, he chose to dictate his autobiography to Barbara Went, his assistant. In 2005, Mr. Tibbenham began a correspondence with Francis Machin, A. Machin's son, seeking any additional information on the dictation of the autobiography. In April 2006, F. Machin replied by including a hand written note (on the back of an envelope) from Ms. Went.



Text: (above) "Francis - 23rd Sept 1997 - 1st visit to Arnold for note taking can't be of any more help I'm afraid. Your father dictated excellently - which is why his memoirs were completed in record time! I have no more information regarding the stamps unfortunately. Barbara Went."

For those interested in the autobiography and a subsequently published book that realized Arnold Machin's intent to detail his and other's efforts that culminated in the iconic Machin series of definitives, the book titles are:

Autobiography - Machin, *Artist of an Icon*, Arnold Machin, Frontier Publishing, 2002. This book has been out of print since 2002.

History of Development - *A Timeless Classic, The Evolution of Machin's Icon*, Douglas N. Muir, Published by the British Postal Museum & Archive, 2007. This book may be ordered from the BPM&A in London.

Thanks to Robin Tibbenham for making these letters available; to Larry Rosenblum for helpful comments and to James Skinner, current editor of the *Connoisseur Catalog* and proprietor of B Alan Ltd for background comments.



Hedgecoe Photo



The Machin Head as Released

The Great Britain and Commonwealth Collectors Club meets at the Rocky Mountain Philatelic Library on the Third Sunday each month at 2:00 pm.

Visitors are welcome.

Colorado's Postal Past ... Colorado Territory Happy 150th Birthday, February 28, 2011

By Rusty Morse



One of the oldest covers from Colorado Territory, Golden, Colorado.

courtesy:
Colorado Postal History Society

It's almost a non-event. Our neighboring state to the East, Kansas, will get a Statehood sesquicentennial stamp for its 150th Anniversary. About a month after Kansas went from Territory to State, its western counties became part of what would become Colorado Territory. Prior to February 28, 1861 what we now know as Colorado was part of Kansas, Nebraska, New Mexico and Utah Territories.

Yet no one seems to be aware of this anniversary. Much less celebrate it with a stamp as so many other states and territories have received. Of course, The Colorado statehood centennial stamp also was a year late as well.

But Colorado and the miners of the 1859 Gold Rush were not a serious concern of the powers in Washington then assembled. The Union was falling apart, Abe Lincoln had been elected President and would take office on March 4th 1861. South Carolina led the secessionists in December 1860 and by the first of February, 150 years ago, Florida, Mississippi, Alabama, Georgia, North Carolina, and Texas had followed.

Thus when President Buchanan signed the Organic Act creating Colorado on February 28th, the Union was nearing collapse. Miners here were divided, as many of the most experienced men came from Georgia and Southern states and had been in mining since the 1830's in Georgia and in California.

George Griffith, founder of Georgetown, Colorado was behind the Griffith District in 1859-60, and was among the men who left for Georgia later returning after the war to dispose of his claims. Others in nearby Empire, Colorado lived in the Union District and soon would organize the 2nd Colorado Regiment to fight in Missouri as well as Indian campaigns. Many individuals who were miners in the unorganized regions west of Denver left the Territory never to return.

Several efforts to organize legitimate governments

above the municipal level failed. Styled as Jefferson Territory, efforts failed in spite of efforts to gain recognition. The name Colorado was offered initially as an option to split California into two but came to favor due to the River of that name that begins in Rocky Mountain National Park today. It refers to the color red (color rojo) in Spanish.

The *Rocky Mountain Stamp Show 2011* will adopt the 150th Anniversary as its theme this year. Cachets and special cancels will celebrate the establishment of the Territory Colorado a full 15 years before it became the Centennial State in 1876. Historians may well want to pay special attention as many previously unpublished facts about the Gold Rush will be related during this celebration.



Cachet for the 2011 Rocky Mountain Stamp Show

An Authentic Ottmar Zieher Post Card With the Cuban National Anthem

by Ronald Hill



Ottmar Zieher post card (circa 1902) showing stamps of Cuba with hand drawn art added.

Ottmar Zieher of Munich, in Bavaria, between 1897 to 1908, printed postcards that are still copied to this date. From 1902 to 1905 he did several hundred that show the various nations coat-of-arms and their postage stamps on the obverse.

Many of these post cards have been copied and modern reproductions are frequently seen at Post Card shows and from dealers online.

However it is always nice to find an original Zieher card especially when it has been inscribed with special notes or, in this case, hand drawn artwork showing the date and a copy of a musical score.



Ottmar Zieher post card (circa 1902) showing stamps of Canada.

The Cuban card shows stamps of the period plus the Cuban Coat-of-Arms. But the added feature of this particular card is the drawing of the *Himno Bayamés*, the National Anthem made popular in the long war against the Spanish and adopted by the new Republic of Cuba in 1902.

An authentic Ottmar Zieher card from 1902-1905 will contain the wording on the left margin "Ottmar Zieher, Munich, (Bavière)" as shown above on the Cuban card as well as on the sample of a Canada Ottmar post card.

WHAT'S NEW ON THE SHELVES?

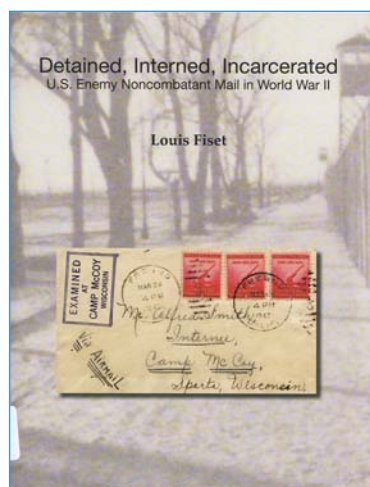
UNITED STATES

A Checklist of Indian Territory Post Offices 1824-1907,
by Richard W. Helbock

*Confederate States Postal History: the James P. Myerson
Collection*, Catalogue for American Historical
Auctions sale in June, 1998

*Confederate States Stamps and Covers Including the
Richard A. Corwin Collection*, Catalogue for the
Christie's Robson Lowe Auction June, 1989

*A Description of United States Postage Stamps Issued
by the Post Office Department from July 1, 1847 to
Decemeber 31, 1967*, pub by The United States
Post Office Department



*Detained, Interned, Incarcerated: U.S. Enemy
'Noncombatant Mail in World War I*, by Louis Fiset

*The Gunesch-Coda Standard Catalog of United States
Bureau Issue Precancel Postage Stamps of the United
States, 19th Century Issues, Part One*

*On Plating the 3 Cent 1851, United States Postage Stamp
with Detailed Description of the Three Right Vertical
Rows of the Left Pane of Plate Three Containing the
Principal Minor Varieties*,
by Carroll Chase (locked case)

*Postmasters Postal History of Burlington, Vermont:
The First 100 Years*, by Donald B. Johnstone
Provisionals, by John N. Luff

*The Railway Service. United States Highway Post
Office Cover Catalog*, by Clarence R. Wilking

The Salt Lake City Post Office, by Les Whall

United States Famous American Series of 1940,
by George C. Hahn

U.S. Departmental Specimen Stamps, by W.V. Combs

*The Westpex Sale: the Barbara Fosdyke Ray
Collection of the 1861-67 Black Jack Issues*,
Catalogue for the Schuyler J. Rumsey auction
held April 2010

*Your Uniform is Your Pass: Soldier and Sailor Welfare
Relief and the American Doughboy in World
War I. Volume 8: National Lutheran Commission
for Soldier's and Sailor's Welfare*, by Sergio Lugo



ASIA

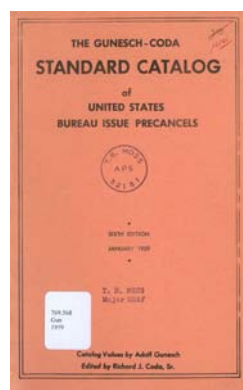
The 2007 Summer Sale and The 2007 Autumn Sale,
Catalogues for John Bull Stamp Auctions held
June and October, 2007

Fine Stamps and Postal History Auction, Catalogues
for Phila China auctions held March 2007,
July 2007, December 2007, March 2008,
and June 2008

The Happy Valley Collection of Hong Kong, Catalogue
for John Bull Stamp Auction held July, 2007

Hong Kong Stamp & Postal History Auction, Catalogue
for John Bull Stamp Auction held October, 2007

*The Kau-Lung Collection of the Large &
Small Dragon Issues of China*,



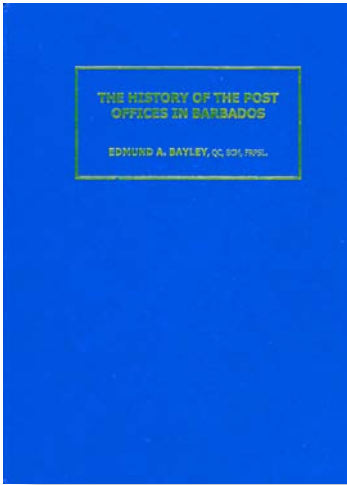
*The Philatelic and Postal History of Hong Kong
and the Treaty Ports of China and Japan*,
by F.W. Webb

*The Provincial City Collection of the Opening of
China, 1801 to 1856*, Catalogue for
John Bull Stamp Auction held June, 2007

WHAT'S NEW ON THE SHELVES?

AUSTRALIA and OCEANIA

The New Zealand Collection, Official Album
(without stamps) for 2009,
published by New Zealand Post



CARRIBEAN

The History of the Post Offices in Barbados,
by Edmund A. Bayley

COLORADO

Colorado Industries of the Past, by William L. Reich

CINDERELLAS

Green's Catalog of the Tuberculosis Seals of the World,
Part III: Foreign Seals (revised through 1983)

Poster Stamps: German Aviation-German Aircraft,
by Charles Kiddle

Poster Stamps: German Aviation-Zeppelins and
Other Airships, by Charles Kiddle

EUROPE

The Railway Sub Offices of Great Britain
by A.M. Goodbody

Azulejo: 5 Seculos de Azulejo em Portugal (Azulejo: 5
Centures of the Tile in Portugal), text by Rafael
Salinas Calado (includes stamps)

Bright & Son's "ABC" Descriptive Priced Catalogue of the
Stamps of the British Empire (12th Ed; 1920)

Catalogo Sassone: dei Francobolli D'Italia, Trieste,
Vaticano, S. Marino, Egeo, published by Sassone

Cyprus Including Photis Themistokleous Collection
"Cleopatra", Part I, Catalogue for the
A. Karamitsos auction June, 2010.

Colombo (Columbus), by Luis Albuquerque
(includes Columbus souvenir sheets from the
four issuing countries)

The History of the Portuguese Postage Stamp,

by António Henrique R. de Oliveira Marques
Katalog Specjalizowany Znakow Pocztowych Ziem
Poliskich, 1990

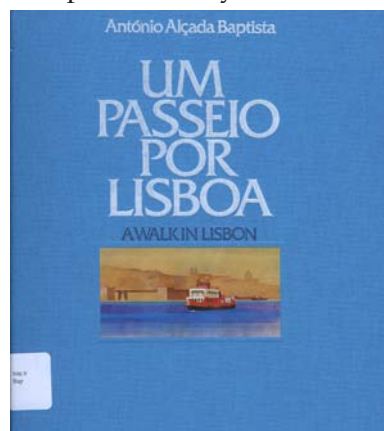
Magyar Belyegek Arjegyzeke (Price List of the
Hungarian Stamps), 1990

Michel Deutschland Spezial-Katalog 1999

Popular Portuguesa Arquitectura (Popular Portuguese
Architecture), by Martins Barata (includes stamps)

Portugal em Selos (Portugal in Stamps), 1984, 1985,
& 1986 editions (with stamps),

published by the Portuguese Post Office
Speciaal-Catalogus: van de Postzegels van Nederland
en Kolonin: 1934-1984, 43rd Ed. (1984),
published by NVPH



Um Passeio por Lisboa (A Walk in Lisbon),
by Antonio Alcada Baptista (includes stamps)

NORTH AMERICA

Mexico's Denver Printing of 1914: Postage and
Revenue Stamps for the Provisional
Constitutionalist Government, by Ron Mitchell

The Squared Circle Postmarks of Canada,
by Alfred Whitehead

Canadian Secret Mark Stamps, by Garret W. Satfield

UNITED NATIONS

Malaria Issues: United Nations, by Marian Carne

SOUTH AND CENTRAL AMERICA

Latin America: Includes Bolivia, the A.R. Doublet
Chile, Guatemala, Mexican Classics, and Peru,
Auction Catalogue for Christie's Robson Lowe
sale November 1987

TOPICAL

Ships on Stamps, pub. by the American Topical Society

(continued)

WHAT'S NEW ON THE SHELVES?

(continued)

MISCELLANEOUS

- All Color Book of Stamps*, by Kenneth Chapman and Barbara Baker
- Auction of British Empire and Foreign Countries Postage Stamps & Postal History*, Catalogue for Grosvenor Auction held in October, 2010
- Catalogue of Ethiopia, the International Gold Medal Collection; Tibet and Nepal, Including the "Everest" Collection*, for the Harmer's of London Auction held December, 1995
- Fundamentals of Philately: Sectons 1 & 5*, by L.N. and M. Williams
- Stamp Booklets: Magic Carpets to Adventure: Travel Through Space and Time and Have Fun Along the Way*, by Jeremy A. Lifsey
- The Winton M. Blount Postal History Symposia, Select Papers 2006-2009*, ed. by Thomas Lera

NON-PHILATELIC (Railroads)

- Daring & Suffering: A History of the Andrews Railroad Raid*, by William Pittenger

NON-PHILATELIC

- Brand Book of the Denver Westerners*, edited by Francis B. Rizzari
- The Collector's Handbook: Tax Planning, Strategy, and Estate Advice from Collectibles Experts*, by James L. Halperin and Gregory J. Rohan
- Geologic History of Utah*, by Lehi Hintze
- Land of Legend*, by Jack Carver, Jerry Vondergeest, Dallas Boyd, and Tom Pade
- The Magnificent Rockies*, by the Editors of the *American West*
- Mary Colter, Architect of the Southwest*, by Arnold Berke
- Masterpieces of the American West: Selections from the Anschutz Collection*, by Elizabeth Cunningham
- San Juan County, Utah: People, Resources, and History*, edited by Allan Kent Powell
- The Towns of Tintic*, by Beth Kay Harris

PERIODICAL PICKIN'S

by Sergio Lugo

The focus of this issue's article is on a small Caribbean nation that has continuously intruded into the consciousness of the American polity for well over half a century, beginning with the slave rebellion that led to the largest land deal in American history. Its recent cholera epidemic (first in the America's), highly contested Presidential elections, and its human suffering as a result of floods and hurricanes have appeared on the news outlets of the U.S. for the past year. I speak of none other than Haiti, and the philatelic periodical devoted to it entitled *HAITI PHILATELY*.

The RMPL's copies are now received electronically, in the form of pdf files which we print out and display in our periodical racks. These files are sent by the **Haiti Philatelic Society**, whose website can be found at www.haitiphilately.org. The website is accompanied by neat creole Haitian music that's a delight to hear. But enough of that - let's deal with the subject at hand. Namely, the 38 volumes of *HAITI PHILATELY*. Begun in 1972, it has gradually evolved into a slick, well illustrated, jam packed information outlet for a little understood and studied stamp


publishing republic a few hundred miles offshore from the coast of Florida. Regrettably, the RMPL'S holdings of the periodical are spotty, consisting of single issues in the 1980s and 1990s, incomplete volumes for the years 1994 to 1999, and single volumes in the years 2007 to 2010. The journal is published quarterly, 4 times a year. An index of articles (both Subject and Author) is available for the years 1975 to 1996.

The quarterly journal is replete with information. Typically, it focuses on a lead article (most recent issues deal with Pioneer Airmail and Aerophilatelic Errors), then provides information on the Society and its members (noting in a recent issue the passing of F. Burton "Bud" Sellers, an RMPL member many years ago). The journal then continues with specialty topics and subjects about Haitian philately, continues with modern events in Haiti, and concludes with show reports, as well as other specialty topics on Haitian philately. On the whole, I've always found the journal's articles, well written, highly informative, nicely illustrated, and well researched. Most notably, there is no advertising within its 20 to 24 pages.

See the new Updated RMPL Web Page
www.rmpldenver.org



RMPL's New Banner Display Shown at Recent ARIPEX Show



BANANA BELT STAMP CLUB
Buena Vista/Salida Colorado

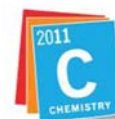
BANANAPEX

STAMP SHOW
Saturday April 9, 2011
10 AM to 3 PM
Pinon Room
Buena Vista Community Center
(east end of Main Street)

STAMP DEALERS BOURSE
STAMPS & SUPPLIES
FREE ADMISSION

BANANAPEX 2011 is sponsored by the
Banana Belt Stamp Club of Buena Vista/Salida, Colorado

**International
Year of Chemistry
Launched in January**
Denver Philatelic Event
Planned in August



International Year of
CHEMISTRY
2011

The official launch ceremony of the International Year of Chemistry 2011 (IYC 2011) took place on January 27-28 in Paris at the headquarters of the United Nations Educational Scientific & Cultural Organization (UNESCO). Over 1,000 delegates from 60 countries—including four Nobel Prize Winners, diplomats, government ministers, and dignitaries—took part in the opening ceremony. Since that time numerous activities have occurred around the world in Austria, Spain, Belgium, Nepal United States, Costa Rica, United Kingdom, China, India, Mexico, Sri Lanka and Canada.

Philatelic interest is high with the *Chemistry & Physics On Stamps Study Unit* (CPOSSU) which is following expected philatelic interest in chemistry in many countries around the world. Stamps known to be issued thus far can be seen on the web page www.chemistry2011.org/participate/activities/show?id=533

Of particular interest in Denver will be the *American Chemical Society, Fall National Meeting and Exposition*, August 29-31, Sept 1, 2011 at the Colorado Convention Center. A Symposium will be held during the meeting titled, *IYC 2011 A Philatelic Celebration*.

A local host committee in Colorado will coordinate local philatelic activities during the Meeting.

See www.cpossu.org or contact Ronald Hill, hillwright@mac.com if you would like to participate.



Welcome Megan Welsh

Ellengail Beuthel and Don Dhonau are old hands at the RMPL. On the other hand, Megan Welsh is new; and a great addition she has become. A graduate student at Denver University's Library and Information Science Program, Megan is interning at the RMPL a total of 10 hours per week. Megan has taken on a variety of assignments, under the mentorship of Don and Ellengail; she generally works on those on Mondays. If you get a chance, welcome her to the Library and offer your best wishes for her success in her chosen field.

by Travis Searls

I must be honest that I wasn't able to spend the time researching at the RMPL that I wanted to in preparing for this issue's article. The library is loaded with philatelic information and I enjoy spending time there researching forgeries, but when my real job keeps me away, I first turn to my own small collection of reference material and then to the internet.

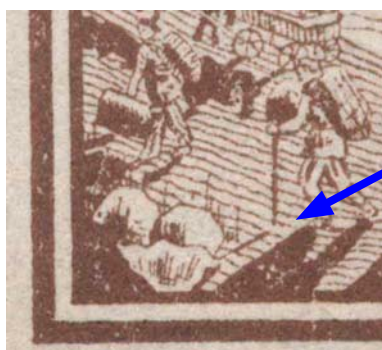
Usually the first clue that you will get about forgeries comes from the major catalogs. Unfortunately most of the descriptions will only read "forgeries abound" or "counterfeits exist". So I turn next to my generic books on forgeries. These cover a wide variety of the common forgeries with most only covering stamps of the 19th century. And none of my books were any help with the stamp I was trying to research for this article, the 1921 Russian 2250 ruble brown semi-postal stamp.

Having exhausted my personal references and no time for the library, I started my internet search. The first thing I look for when searching the internet is philatelic clubs and societies. I quickly found The Rossica Society of Russian Philately www.rossica.com and noticed that they have a forum area that discusses forgeries. Once I registered, I navigated to the forgery section and found a discussion on the stamp I was looking for.

Issued in 1921 to help provide relief for the starving due to a famine that year, this stamp was part of a three stamp set having the same design and value, only differing in color; red, green and brown. The quickest way to determine if the stamp is a forgery is by examining the figure with a cane near the bottom left of the stamp. If there is a gap between the cane and the shadow of the cane, then your stamp is a forgery.



The 1921 Russian 2250 Ruble brown semi-postal stamp.



The gap between the cane and its shadow indicates it is a forgery.

Great Britain and Commonwealth Collectors Club Challenges Other Local Clubs to a One Frame Club Exhibit at Rocky Mountain Stamp Show

At the recent meeting of the *Great Britain & Commonwealth Collectors Club*, Sunday, February 20, at the RMPL it was decided that the Club would enter a One Frame exhibit into the upcoming **Rocky Mountain Stamp Show** (ROMPEX). The exhibit will consist of sixteen (16) individual pages each produced by Club members.

In addition, the Club invites all other philatelic and stamp collecting clubs in the area to submit similar exhibits prepared by their members. If enough entries are entered a group of judges will present suitable awards to the club exhibits.

The intent is two-fold; first, to promote the collecting interests of members of the Great Britain club; and secondly to encourage all clubs in the area to take this opportunity to involve their organization in the **Rocky Mountain Stamp Show** and to promote their members' skills and collections. To enter, contact Ronald Hill, Exhibit Chairman, Rocky Mountain Stamp Show at rompex2011@comcast.net

See the new Updated RMPL Web Page
www.rmpldenver.org

2010 World Cup Soccer (Round) Stamps

by Glenn Shaw

During June and July, 2010 the country of South Africa was the proud host for the FIFA World Cup Soccer Tournament. This was the first time this prestigious tournament was ever held on the African continent. As part of the celebration, South Africa, along with eight other African countries, commissioned the design and issuance of an impressive minisheet of nine stamps and a First Day Cover featuring soccer players in action; Zukumi the mascot of the tournament; as well as the names and flags of each of the nine countries. The participating countries were South Africa, Namibia, Botswana, Mauritius, Malawi, Zambia, Zimbabwe, Lesotho and Swaziland.

Most of us here in the United States did not know of this stamp event. I certainly didn't until I received a letter from a good friend who lives in South Africa with one of the stamps on the envelope. He knows I am a stamp collector and thought this stamp would make my day. It certainly did! Some of the key features of the stamp were its round design

and the covering of gold foil. It was shown to many at the RMPL who were likewise impressed with what they saw.

The stamp was designed by Anja Denker, a well known local artist and philatelic designer from Windhoek, Namibia. Ms Denker

commented that doing the design was very challenging because of all the people involved. When the design was finalized the printing was done in the Netherlands by Jon Enschede Security Printing on white paper with embedded gold foil. Perforations were made vertical and horizontal as well as circular around the stamp. The embedded gold foil feature certainly makes a dazzling presence for this sheet



of stamps. Each stamp looks like it is covered in gold foil.

Twenty five to thirty other countries have recently come out with their own stamps commemorating the World Cup Soccer Tournament, but their efforts are pretty humble compared to what Anja Denker and the nine participating countries have done.

World History Through Stamps Begins Third Series of Classes in the DU OLLI Program

The third 8-week OLLI program on *World History Through Stamps* presented by RMPL members will be held in Denver beginning March 30, 2011 at the Central Christian Church, 3690 Cherry Creek Drive South, Denver. A completely new program will begin in March with Steve Nadler and Ronald Hill as co-facilitators of the program along with Jack Van Ens and Sergio Lugo. Also joining for the Spring term will be Ron Mitchell and Jeff Modesitt as presenters in the new program.

The new Fall term will begin in September. Anyone wishing to volunteer to present a one-day, 2-hour program should contact Ron Hill or Steve Nadler before May 10, 2011.



DONATIONS

The library thrives on the enthusiasm and generosity of its members. The following members have made donations to the library over the past two months. We thank each and every one who has contributed.

| | |
|------------------------------------|-------------------------------------|
| American Philatelic Society | Stanley Luft |
| Vicki Aycrigg | Sergio Lugo |
| Christopher Baker-Carr | Paul Martz |
| Boyd Barker | Michael McBride |
| Jim Bell | James Moorman Living Trust |
| Basil Burrell | Jeff Modesitt |
| David Capra | Steve Peckar |
| Eric Carlson | William Plachte |
| Ruth Caswell | David & Betty Purvis |
| Attilio Catanzano | James Reichman |
| Joe Crosby | Gary Rodgers |
| Ernesto Cuesta | Roger Rydberg |
| Dr John Kevin Doyle | Scandinavian Collectors Club |
| Greg Frantz | Travis Searls |
| Joan Grady | Glenn Shaw |
| Leland Greb | Richard Sine |
| John Herzog | Eric Sonsthagen |
| Ronald Hill | Patrick Speckmeier |
| Jack Knight | Ludvik Svoboda |
| Airmail Society | Paul Thomas |
| George Killian | Ralph Tingley |
| John Koller | Jack Van Ens |
| Joe Lambert | Tonny Van Loij |
| Duane Larson | Andrew Wacinski |
| Jim Lays | Jeanna Washburn |
| Frank Leitz | Martin Wilkinson |

SCRIBBLINGS CLASSIFIED

The new **SCRIBBLINGS CLASSIFIED** is available free-of-charge to any RMPL member at the \$25 level or higher. If you have not already done so, please consider increasing your membership level to the \$25 (Contributing Level) or higher. **Classified: maximum 25-words (or 3-lines).** Classified ads are not permanent and may be rotated with other member's ads as space permits. Send all new classified ad requests to Ron Hill at hillwright@mac.com

SELLING – Enormous variety of Latin American stamps for collectors. Sergio: lugopspe@msn.com

SELLING – US Uncut Press Sheets. Some above face value; others at or below face value. Mostly 1997 to 2007. Peter Adgie collection for his wife: Ron Hill hillwright@mac.com

SEEKING – Christian Science covers, post cards and ephemera for new WWI monograph. Sergio: 303-691-0393

SEEKING – Minkus 2-Post, used album pages. Germany 1970-76 to present. Chuck: 303-766-4735

SEEKING – US Bureau Precancel exchange; Tom: 303-341-9997

WANTED – U.S. 34-cent "Greetings From America" stamps on cover. Gene: nett.gene_43@comcast.net

WANTED – U.S. Postal Stationery pre-1920. Erl: erlfossum@aol.com

WANTED – Farley press sheets. John: aerophil59@yahoo.com

TRADE OR SELL First Day of Issue Canal Zone covers for money or higher value Canal Zone stamps. Tim: timheinscpa@msn.com

NEW MEMBERS

The library is pleased to welcome the following new members who have joined in the past two months

Bob Smetana, Placitas, NM –
Collects US Singles, UN, Canada used,
Czechoslovakia and Czech Republic
Eve Kuenn, Bailey, CO –
David C. Edmiston, Jr. Golden, CO –
General interest collector
Walter A. Bowles, Jr, Denver, CO –

David Shaw's Check List of Chopin Featured in *Topical Time*

2010 - The Year of Chopin: a Philatelic Check List
David Shaw

The year 2010 marked the 200th birth anniversary of Polish composer and pianist Frédéric Chopin (1810-49), and the 16th International Chopin Piano Competition held in Warsaw, Oct. 2-23. Early that year, Poland's parliament officially declared 2010 the "Year of Chopin," that Fryderyk Chopin's. Celebrations were held around the world, from Europe to Asia, including special concerts, exhibitions and symposia.

As of mid-December, the following countries have issued Chopin stamps and/or commemorative postmarks to celebrate the occasion. Incidentally, 2010 is also the 200th birth anniversary of the philatelist and collector Robert Schumann.

Stamps:

- Bosnia & Herzegovina (10, 15, 20, 25, 30, 35, 40, 45, 50, 55, 60, 65, 70, 75, 80, 85, 90, 95, 100, 105, 110, 115, 120, 125, 130, 135, 140, 145, 150, 155, 160, 165, 170, 175, 180, 185, 190, 195, 200, 205, 210, 215, 220, 225, 230, 235, 240, 245, 250, 255, 260, 265, 270, 275, 280, 285, 290, 295, 300, 305, 310, 315, 320, 325, 330, 335, 340, 345, 350, 355, 360, 365, 370, 375, 380, 385, 390, 395, 400, 405, 410, 415, 420, 425, 430, 435, 440, 445, 450, 455, 460, 465, 470, 475, 480, 485, 490, 495, 500, 505, 510, 515, 520, 525, 530, 535, 540, 545, 550, 555, 560, 565, 570, 575, 580, 585, 590, 595, 600, 605, 610, 615, 620, 625, 630, 635, 640, 645, 650, 655, 660, 665, 670, 675, 680, 685, 690, 695, 700, 705, 710, 715, 720, 725, 730, 735, 740, 745, 750, 755, 760, 765, 770, 775, 780, 785, 790, 795, 800, 805, 810, 815, 820, 825, 830, 835, 840, 845, 850, 855, 860, 865, 870, 875, 880, 885, 890, 895, 900, 905, 910, 915, 920, 925, 930, 935, 940, 945, 950, 955, 960, 965, 970, 975, 980, 985, 990, 995, 1000)
- China (March 7, 10, 15, 20, 25, 30, 35, 40, 45, 50, 55, 60, 65, 70, 75, 80, 85, 90, 95, 100, 105, 110, 115, 120, 125, 130, 135, 140, 145, 150, 155, 160, 165, 170, 175, 180, 185, 190, 195, 200, 205, 210, 215, 220, 225, 230, 235, 240, 245, 250, 255, 260, 265, 270, 275, 280, 285, 290, 295, 300, 305, 310, 315, 320, 325, 330, 335, 340, 345, 350, 355, 360, 365, 370, 375, 380, 385, 390, 395, 400, 405, 410, 415, 420, 425, 430, 435, 440, 445, 450, 455, 460, 465, 470, 475, 480, 485, 490, 495, 500, 505, 510, 515, 520, 525, 530, 535, 540, 545, 550, 555, 560, 565, 570, 575, 580, 585, 590, 595, 600, 605, 610, 615, 620, 625, 630, 635, 640, 645, 650, 655, 660, 665, 670, 675, 680, 685, 690, 695, 700, 705, 710, 715, 720, 725, 730, 735, 740, 745, 750, 755, 760, 765, 770, 775, 780, 785, 790, 795, 800, 805, 810, 815, 820, 825, 830, 835, 840, 845, 850, 855, 860, 865, 870, 875, 880, 885, 890, 895, 900, 905, 910, 915, 920, 925, 930, 935, 940, 945, 950, 955, 960, 965, 970, 975, 980, 985, 990, 995, 1000)
- Germany (March 11, 15, 20, 25, 30, 35, 40, 45, 50, 55, 60, 65, 70, 75, 80, 85, 90, 95, 100, 105, 110, 115, 120, 125, 130, 135, 140, 145, 150, 155, 160, 165, 170, 175, 180, 185, 190, 195, 200, 205, 210, 215, 220, 225, 230, 235, 240, 245, 250, 255, 260, 265, 270, 275, 280, 285, 290, 295, 300, 305, 310, 315, 320, 325, 330, 335, 340, 345, 350, 355, 360, 365, 370, 375, 380, 385, 390, 395, 400, 405, 410, 415, 420, 425, 430, 435, 440, 445, 450, 455, 460, 465, 470, 475, 480, 485, 490, 495, 500, 505, 510, 515, 520, 525, 530, 535, 540, 545, 550, 555, 560, 565, 570, 575, 580, 585, 590, 595, 600, 605, 610, 615, 620, 625, 630, 635, 640, 645, 650, 655, 660, 665, 670, 675, 680, 685, 690, 695, 700, 705, 710, 715, 720, 725, 730, 735, 740, 745, 750, 755, 760, 765, 770, 775, 780, 785, 790, 795, 800, 805, 810, 815, 820, 825, 830, 835, 840, 845, 850, 855, 860, 865, 870, 875, 880, 885, 890, 895, 900, 905, 910, 915, 920, 925, 930, 935, 940, 945, 950, 955, 960, 965, 970, 975, 980, 985, 990, 995, 1000)
- Poland (Feb. 22)
- Romania (March 1, Chopin and Schumann)
- Russia (March 1, Chopin and Schumann)
- Slovenia (March 1, Chopin and Schumann)
- USA (March 1, Chopin and Schumann)
- Vietnam (Feb. 22)

Postmarks (no stamps were issued by the following countries, except Poland):

- France (Oct. 27-31, Nancy, "La Fête Chopin de Nancy, L'Université de Chopin" (Paris)

The current issue of *Topical Time* contains this colorful 2-page article by RMPL member David Shaw.



SECOND SATURDAY PROGRAMS AT THE LIBRARY

Second Saturday programs are sponsored by the library and attract a friendly group of folks who are interested in a specific subject or who are interested in learning more about an area of philately that may be new to them. Contact Jim Kilbane if you would like to present a program.

e-mail: aurora_80017@yahoo.com

The programs begin at 9:00 AM and are over by 10:00 AM.

Doughnuts and coffee are complimentary and all are welcome.

March 12, 9:00 AM

US Provisional Stamps in Cuba; 1898-1902

by Robert Littrell



Includes the overprints on U.S. postage for use in Cuba as well as the interesting, and widely forged, issues of Puerto Principe.

APRIL 9, 9:00 AM

The "Denver Eagle" Stamps of Mexico

by Ron Mitchell



The "Denver Eagles", the only stamps ever printed in Denver for a foreign country will be presented by Ron Mitchell. Some of the questions to be addressed are: *Where and when the revenues were pressed into service on mail due to a postal emergency?*

How a love affair brought the printing job to Denver? Why the stamps were available to collectors before they were used in Mexico? These, and more stories, especially how Ron spent most of his adult life writing his new book, will be presented.

IMPORTANT NOTE:

FRONT DESK VOLUNTEERS NEEDED for Friday afternoons and as backups on Saturdays. See Sergio Lugo or Don Beuthel.

SHOWS & EVENTS

DENVER STAMP EXCHANGE

March 5, 2011

Plaza Inn (formerly Quality Inn) - 200 West 48th Avenue

I-70 & I-25 (northwest quadrant)

CONTACT: Patrick P. McNally - 303-433-0642

Die Alte Marke - P.O. Box 12143, Denver, CO 80212-1813

diealtemarke@comcast.net

ROCKY MOUNTAIN STAMP SHOW

May 13, 14, 15, 2011

Complete Information at www.rockymountainstampshow.com

Attention Exhibitors: All One-Frame Exhibit Space is now Filled.

Over 100 frames are still available for other exhibits.

Contact: *Exhibit Manager:* rompex2011@comcast.net



What's Happening at the RMPL...

"Come and Enjoy the Activities"

Monday, Tuesday, Wednesday, Friday, Saturday 10:00 AM - 4:00 PM

Thursday 2:00 - 8:00 PM. Closed Sundays and Holidays. Phone: 303.759.9921

Meeting times and places sometime change. It is best to call the library or the club to confirm the place and time. A calendar of reserved club times is kept by Operations Manager, Don Beuthel, at the library. Clubs should check the calendar regularly and notify Don (303-755-9328) of any changes or updates. All requests to reserve meeting time and space other than those listed here must be approved and scheduled by Don well in advance.

MARCH 2011

- Mar 2** - Meeting-Aurora Stamp Club.
6:30 PM trading, 7:30 PM meeting/program
- Mar 5** - Meeting 10:00 AM
Scandinavian Collectors Club
- Mar 5** - Meeting 11:00 AM United Postal
Stationery Society- Colorado Chapter -
RMPL Conference Room
- Mar 5** - Meeting - 1:00 PM
TOPIC - Topical Philatelists in Colorado
- Mar 9** - Meeting - 7:00 PM
Denver Germany Stamp Club (Auction*)
- Mar 10** - Meeting - 6:30 PM
Denver Post Card Club
- Mar 12** - 9:00 AM
Second Saturday at the RMPL
Program by Robert Littrell
US Provisional Stamps in Cuba; 1898-1902
- Mar 12** - Meeting - 10:00 AM
Mexico/Latin America Study Group
- Mar 12** - Meeting - 11:30 AM
Universal Ship Cancellation Society
U.S.S. Colorado Chapter
- Mar 19** - Meeting - 9:30 AM
Metro Denver Young Stamp Collectors Club
- Mar 20** - Meeting - 2:00 PM
Great Britain & Commonwealth Collectors
- Mar 22** - Meeting 7:30 PM Rocky Mtn Stamp Show
- Mar 26** - Meeting 10:00 AM FDC Chapter

APRIL 2011

- Apr 2** - Meeting 10:00 AM
Scandinavian Collectors Club
- Apr 2** - Meeting - 1:00 PM
TOPIC - Topical Philatelists in Colorado
- Apr 6** - Meeting-Aurora Stamp Club.
6:30 PM trading, 7:30 PM meeting/program
- Apr 9** - 9:00 AM
Second Saturday at the RMPL
Program by Ron Mitchell
The "Denver Eagle" Stamps of Mexico
- Apr 9** - Meeting - 10:00 AM
Mexico/Latin America Study Group
- Apr 9** - Meeting - 11:30 AM
Rocky Mountain Aerophilatelists
- Apr 13** - Meeting - 7:00 PM
Denver Germany Stamp Club
- Apr 14** - Meeting - 6:30 PM
Denver Post Card Club
- Apr 16** - Meeting - 9:30 AM
Metro Denver Young Stamp Collectors Club
- Apr 17** - Meeting - 2:00 PM
Great Britain & Commonwealth Collectors
- Apr 23** - Meeting 10:00 AM FDC Chapter
- Apr 26** - Meeting 7:30 PM Rocky Mtn Stamp Show

***Auction Note:** The *Denver Germany Stamp Club* will hold a fund raising auction at its regular meeting on March 9, 2011 at the RMPL. Lots can be viewed 5:30-7:00 pm; Auction will begin at 7:00 pm. Contact **Patrick P. McNally** at dialtemarke@comcast.net or 303-433-0642

Scribblings is published bimonthly by the Rocky Mountain Philatelic Library, Editor, Ronald Hill, 2038 S Pontiac Way, Denver, CO 80224. The Rocky Mountain Philatelic Library is a chartered Colorado nonprofit corporation and an IRS designated 501 (c)3 charitable organization. Membership subscriptions over that for the regular membership, and donations of appropriate philatelic materials, are deductible for U.S. income tax purposes.

RMPL BOARD OF DIRECTORS

President: Sergio Lugo - Operations Manager: Don Beuthel - Vice-President: Jim Kilbane
Corresponding Secretary: Don Dhonau - Recording Secretary: Paul Lee - Treasurer: Bob Blatherwick
Directors: Jan Marie Belle - Roger Cichorz - Dalene Thomas - David Weisberg, Emeritus: John H. Willard