

# Scribblings

...from the Rocky Mountain Philatelic Library

Ronald Hill, Editor



Ellengail Beuthel, Librarian

Vol. 18 - No. 6  
www.rmpldenver.org

2038 South Pontiac Way, Denver, CO 80224  
303.759.9921

November-December 2010  
Email - rmpl@qwestoffice.net

## IN THIS ISSUE

Color Trials for the 1971 PHILEXOCAM Souvenir Sheet.....	1-3
The Prez' Observations ...	3
RMPL Publishes Its Second Book.....	4
An Exhibition by the Royal Societies.....	5
What's New on the Shelves.....	6-7
Book Review..	
<i>Poster Stamps-German Aircraft</i> .....	8
Big RMPL Sale.....	9
RMPL Silent Auction.....	9
Gold Medal Nights.....	9
RMPL "Classifieds".....	9
Miss Esther L. Brown.....	10
Periodical Picki'n's.....	10
Colorado Postal History Society .....	11
Rocket Mail to New Jersey.....	12-13
RMPL Shirts .....	14
Bulk Lot Auction.....	15
OLLI Program.....	15
First Flight Cover.....	16-17
Irish Overprinted Stamp #93.....	17
Donations .....	18
New Members .....	18
Rocky Mountain Stamp Show.....	18
Shows & Events.....	18-19
Second Saturdays.....	19
Calendar.....	20

USE THE ONLINE CATALOG  
www.rmpldenver.org

## Color Trials for the 1971 PHILEXOCAM Stamp-On-Stamp Souvenir Sheet

by Paul M. Holland

As a collector, I've always been attracted to impossible rarities such as the legendary 1847 "Blue Mauritius", one of the first British colonial stamps (Mauritius Scott #2). Fortunately, it is possible to visit a nice unused example of this stamp "in person" at the public display in the British Library in London, reprints from the original plate engraved on the back of a lady's visiting card discovered in 1912 exist (see reference), and this stamp has been featured on various stamp-on-stamp topicals.

Of all stamp-on-stamp topicals, my favorite is the one showing this "Post Office" Mauritius stamp engraved by Pierre Forget for PHILEXOCAM, the exhibition held at Fort Lamy in Chad during January 1971. The illustration below is the souvenir sheet from the show. The figure above shows a reprint of Scott #2 from the original 1847 plate re-discovered in 1912 printed in deep orange.



(continued)



## Color Trials for the 1971 PHILEXOCAM Stamp-On-Stamp Souvenir Sheet

Continued from page 1

While the “Blue Mauritius” was clearly the star of the show at PHILEXOCAM, five other stamps engraved by the same artist were also commemorated in the souvenir sheet for this exhibition. These airmail stamps are listed in the Scott catalog under Chad as C74-79 and C79a.

In my pursuit of further information about these I stumbled across color trials (shown here and on the next page) for this engraved souvenir sheet. These spectacular items are each printed in the middle of a large (9”x11”) gummed sheet as is standard for color trials by France’s official government printing office for stamps. In this souvenir sheet format they are printed with “PHILEXOCAM 1971” above the stamps and “FORT-LAMY” below.

This has unexpectedly carried me into a new area of collecting about which I know very little, leaving me unsure where to look for more information. For example, while I know that PHILEXOCAM was held from January 23-30, 1971, I’ve been unable to find additional information about this exhibition. Other questions arise. Were any other combinations of colors tried for the souvenir sheets? Were color trials also done for individual sheets of stamps as is often seen for other issues from the French area? Do any relevant catalog listings or other resources for further information on these proofs exist?

For the interested specialist I’ll briefly summarize the information I have on these color trials. At the bottom of each sheet is a stamped control number in ink at the left, press number in the middle, and date at the right. The control numbers range from 47050 to 48310, the press number is T.D.3-17, with four of the

*This stamp-on-stamp close-up from the signed artist die proof was printed in terracotta from the unhardened die before the artist’s name was added at the upper left. The souvenir sheet on the first page shows the final colors of the issued stamp*



color trials printed on Dec. 23, 1970 and the other on Dec. 24<sup>th</sup>. None of the sheets have pencilled notations, suggesting that these were probably printed for distribution to VIPs. The control numbers are not in sequence with the dates, suggesting that the sheets used  
(continued)



## The Prez' Observations

Unlike last year, I won't forget, I won't forget, I won't forget!!! And that is?

I won't forget to wish you all a Merry Christmas and Happy Holidays!! And best wishes for your health and well being (as well as your philatelic pursuits) in the upcoming New Year!

Now that that's done, what else is there? Well, there is the matter of upcoming expectations for the remainder of the year and the new year.

First, in the next issue of *Scribblings*, I'll be updating you on a whole slew of matters in our *State of the Library* article. Everything from accomplishments since the purchase of the new property, to membership, to finances, to accomplishments of our membership.

Second, as always, you'll have an opportunity to discuss these matters further at our regular upcoming RMPL Board meetings. The next meeting will be on Thursday, November 18th.

Third, the library has just published its newest book which is now available. Past president Ron Mitchell's is the author of *Mexico's Denver Printing of 1914*, a thorough analysis

### Color Trials for the 1971 PHILEXOCAM Stamp-On-Stamp Souvenir Sheet (continued)

for printing these color trials were simply pulled from stock as needed. Comparison with two sets of full CTO sheets of the individual stamps in my collection show sequential control numbers between sheets, various presses including T.D.3-1, 2 and 10, and printing dates ranging from January 6th to June 18th, 1971.

Topical collecting is a relatively new area for me, since my primary stamp collecting interest has always been focused on early worldwide classics. Stamp-on-stamp topicals offer a very affordable

of Denver's part in the early postal history of the Mexican Revolution is now available (see page 4).

Fourth, a new activity gets underway on Friday, November 12th at 6:30 pm with the launching of our "Gold Medal Nights". (see page 8)

Fifth, the dinner for volunteers will again be held at the White Fence Farm, this year on Friday, December 3. All invitees should be receiving the letter of invitation from Dalene Thomas shortly. Please advise Dalene if you will be attending, as quickly as possible so that she can finalize the numbers.

And, finally, it's been a great year for remodeling and redesigning the grounds and the new building. But there is much more to do with the library annex (the former garage). Your volunteer help will be most appreciated as we move to complete that project over the next year. Whew - is there anything I forgot? Take care, and thank you all for this past year.

Oh, and Merry Christmas and Happy Holidays.

This Year: *I Didn't Forget*

Sergio

alternative for enjoying rare "incunabula" from the earliest days of stamp collecting, and if one includes items such as proofs and color trials, this can provide a significant collecting challenge.

### Reference

Robson Lowe, *The Encyclopaedia of British Empire Stamps, volume II*, pages 376-377 (also in *Billig's Philatelic Handbook, volume 37*). Author's note (P.M.H.): These reprints all show a heavy horizontal score mark at the right side of the engraved ornament in the lower right corner of the stamp, presumably added to the original plate to distinguish the reprints.



## RMPL Publishes Its Second Book - *Mexico's Denver Printing of 1914*

As the second book published by the RMPL, Ron Mitchell's "*Mexico's Denver Printing of 1914*" expands considerably the breadth and scope of the library's publication program. Not only does it go beyond the State of Colorado with its focus on the Mexican Revolution, but each book includes a DVD disk enclosed which offers "larger than life" images of every illustration, plus all covers and maps shown in the book. These digital images can easily be printed or viewed on your computer screen.

As we move forward with our publications program at the RMPL, we will be adding titles

and manuscripts that broaden our interests even further, into worldwide philatelic subjects such as Scandinavian philately, religiously themed books, as well as postal history of many sorts - all of which we plan to publish in the upcoming several years.

These will continue to be made possible by your willingness as readers (and writers) to develop and present manuscripts to the publications committee. As such, the publications committee always wants to hear from you about possible manuscript ideas and topics that can be developed and published.

---

*Mexico's Denver Printing of 1914* is the result of a specialized study by the author which began in 1974.

Censuses for both the revenues used as postage and the Denver Eagles postage stamps provide a solid base for the postal history story, woven into the chaos of the Revolution.

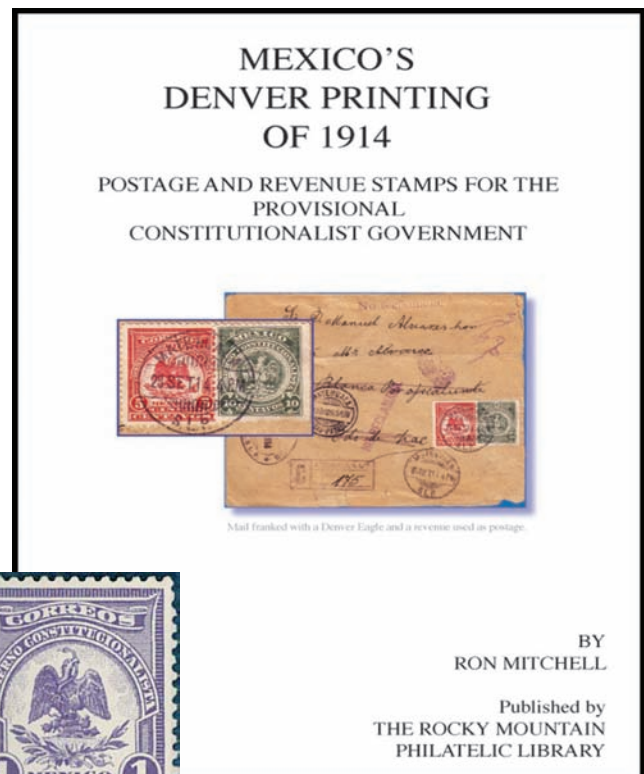
The book is an excellent resource, not only for the Denver Eagles, but for the philately of the 1913-1916 Mexican Revolution.

---

The stories include:

- *Where and when the revenues were pressed into service on mail due to a postal emergency.*
  - *Where provisional overprints and cancels were used.*
  - *How a love affair brought the printing job to Denver.*
  - *Why the stamps were available to collectors before they were used in Mexico.*
- 

The full color book is hardbound, 8<sup>1/2</sup> x 11 inches in size with more than 400 illustrations. Included with each book is a DVD containing digital images of all illustrations and including all maps and covers.



## Pre-Order Your Copy Today

The price is \$50, postpaid to addresses in the United States. Checks should be made out to "RMPL" and mailed to:

RMPL Mexico Book  
2038 South Pontiac Way, Denver, CO 80224

# An Exhibition by the Royal Philatelic Societies From Around the World

by Steve McGill

As part of the London 2010 Festival of Stamps, the 'Royal' hosted exhibits from the related Royal Societies of Canada, Cape Town, New Zealand, Sydney and Victoria as well as an exhibit of its own. All of these exhibits were of exceptional material and I will provide thumbnail descriptions, below, as quoted from the RPSL brochure supplied on entry.

The Royal Philatelic Society of Canada provided a selection of, "Gems of 19th Century Canada" from the Brigham Collection. This collection covered the period from 1851 to 1899 and included, The Pence, The Cents, Large Queens, Small Queens, The Widow Weeds, The Diamond Jubilees, The Maple Leaves, The Numerals, Imperial Postage and The Provisionals.

The Royal Philatelic Society of Cape Town presented an exhibit in three parts including early letters to Commodors and Governors in the Dutch and British periods; the second; official mail in the period of 1806 to 1910 and finally, the third; taxed mail in the pre-Union period.

The Royal Philatelic Society of New Zealand was represented by a seven section display of Samoa Palm Trees Plate Proofs, Honey Tax Stamps, The Royal Air Force Desert Air Service, 1921-1927, Prisoner of War Air Letter Cards, 1941-1945, The 1901-04 British Antarctic Expedition, The 1882 'Provisionals' and The New Zealand Government Life Insurance Department.

The Royal Sydney Philatelic Club contributed four, two frame exhibits titled: The Royal Connection, New South Wales Centennial Issues (1888-1912), Trinidad: The 1885 Postage Due Issue and Victoria: The 2d Bell Design, 1873-1880.

The Royal Society of Victoria weighed in with eight topics including Victorian Cancellers in The Early 1850s, Victoria 2d Queen on Throne 1852-57, An Advertisement for Australia, Australian King George V 1d - 1914-1937, King George VI Embossed Oval Designs, Australian Missing



Steve McGill (left) with Alan Moorcroft, FRPSL, and President of the RPSL (right) being personally greeted at the door as well as receiving a tour of the Royal's facility.

Colours from the 1960s, Aden - 1937 Dhow Issue and Postcards of Panama Republic Printers and Specimen Cards.

Lastly, the Royal Philatelic Society of London provided a stunning presentation of the, H.C.V. Adams Collection of King George V Proof And Essays. This exhibit covered material from the Downey Head, the Mackennal 'Laurel & Oak Leaf' design and the Mackennal 'Seahorses'. The Royal exhibits were especially amazing considering they were all in one room and represented an unprecedented exhibiting event that will probably not be duplicated anytime soon.

## SPECIAL MEETINGS AT THE RMPL








# WANTED

Collectors who seek out  
British monarchs and  
related subjects.






Come join us at 2:00 pm every third Sunday of the month at the RMPL library.

Formerly the Machin Study Group, now expanded to include:

*The Great Britain and Commonwealth Collectors Club (GBac<sup>3</sup>)*

## WHAT'S NEW ON THE SHELVES?

### UNITED STATES

*Mailing Statement Completion Instruction Guide, 1991*, published by the United States Postal Service

*The Philip R. Beutel Collection of United States Booklet Panes, Complete Booklets and Savings Stamps*, auction for a Robert A. Siegel auction, June 2010

*Restrictions on Transportation of Letters: The Private Express Statutes and Interpretations*, Published by the United States Post Office

*Ten-Cent 1869 Covers: A Postal Historical Survey*, by Michael Laurence

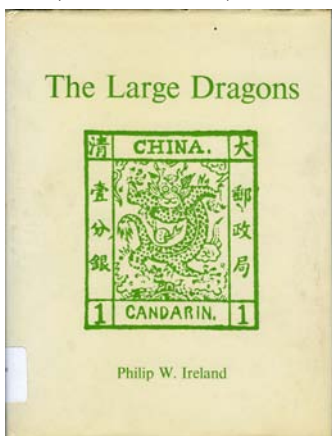
*United States Postal Card Catalog, 60th Anniversary Edition, 2005*, edited by Lewis E. Bussey

*The Wagshal Collection of Classic United States Stamps, Part 2: One-Cent 1851-56 Imperforate*, auction catalog for a Robert S. Siegel auction, Sept.-Oct., 2010

### ASIA

*Asia, Auction Catalogue for a Christopher Gartner auction*, March, 2008

*China: The Large Dragons, 1878-1885*, by Philip Ireland (Locked Case)



*China: The Philip W. Ireland Collection; "The Large Dragons and Their Forerunners"*, Christie's-Robson Lowe auction catalogue for the sale in May, 1989.

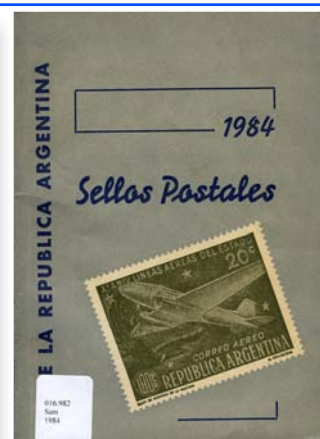
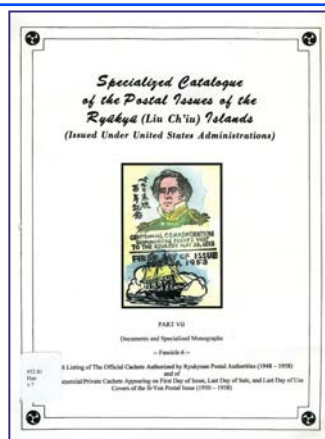
*Colour-Illustrated Stamp Catalogue of China, 1878-1949, 2000 Edition, Volumes I and II*, Ed. by Shiu-Hon Chan

*A Comprehensive Illustration of Covers with Sinkiang Provisional Airmail Stamps*, by David Lu

*The Gold Yuan Stamps of China*, by J. Millard Williams

*Specialized Catalogue of the Postal issues of the Ryukyu (Liu Ch'iu) Islands (issued under United States Administration), Part VII*, compiled by Ron Brawner

*The Magnificent Collection of Chinese Stamps: Second Series, parts 1 & 2*, by M. Mizuhara



*The National Currency Stamps of China, 1945-48*, by J. Millard Williams

*The Northeast Provinces Sun Yat-Sen Stamps of 1945-1948*, by Richard E. Gray

*People's Republic of China Catalogue of the Non-Postal Value Souvenir Sheets*, by H.J. Oranje and E.M. Oranje

*Postage Rates of China 1867-1980*, by Pingwen Sieh and J. Lewis Blackburn

*A Provisional List of Communist Stamps of China, 1935-1950*, by David D. Barrett.

*Qingdao Lao Ming Xin Pian: Historical View of Qingdao*, by May & David Lu

*The Silver Currency Stamps and Temporary Labels of China*, by William E. Jones and J. Millard Williams

### AUSTRALIA and OCEANIA

*British Solomon Islands Protectorate: Its Postage Stamps and Postal History*, by Harold G.D. Gisburn

### CINDERELLAS

*Handbook of the Issues of the Jewish National Fund*, compiled and annotated by Sidney Rochlin

*Ludwig Hohlwein: Poster Stamps (Rekla-me-mar-ken)*, by Charles Kiddle

### EUROPE

*British Maritime Postal History, V.2: The P&O Lines to the Far East*, by R. Kirk (Locked Case)

*Notes on the Stamps and Markings of Portugal and Colonies*, by George Richard Pearson

*Portuguese Timor Mail and the Netherlands Indies*, by Mardjohan Hardjasudarma

### NORTH AMERICA

*Dolls in Canada: Memories of Childhood*, a folder issued in 1990 by Canada Poste to accompany a set of four doll postage stamps

## WHAT'S NEW ON THE SHELVES?

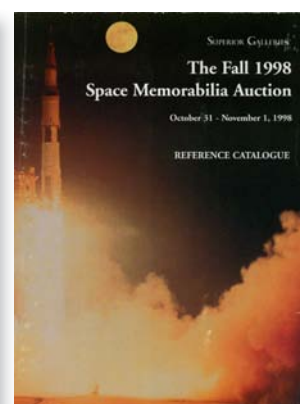
### CZESLAW SLANIA - MASTER ENGRAVER



1921 - 2005

### MISCELLANEOUS

- Bibliography of Philatelic Periodicals*, by Brian J. Birch  
*Czeslaw Slania, Master Engraver, 1921-2005*, by John Campbell  
*The Essentials of Stamp Collecting*, by Al Burns  
*The Fall 1998 Space Memorabilia Auction*, catalogue for the Superior Galleries auction, November 1998  
*Index to the Philatelic Translations Produced by Brian J. Birch*, by Brian J. Birch  
*Le Catalogue de luxe de l'Événement Philatélique International MonacoPhil 2004*, presented by Le Club de Monte Carlo

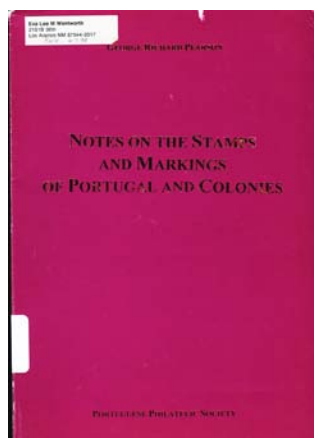


### SOUTH AMERICA

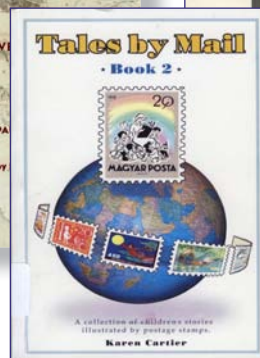
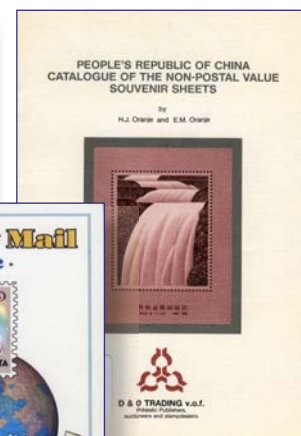
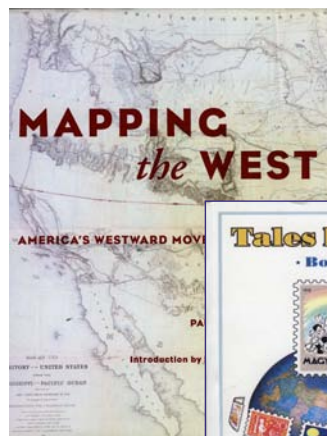
- Colombian Airmail Stamps and Flown Covers*, catalogue for the Phillips Son & Neale Auction held 25 May, 1990  
*Sellos Postales de la Republica Argentina, Supplement, 1984/85*, issued by Miroslavo Samowerskyj

### TOPICAL

- Barack Obama on Worldwide Stamps*, by Melvin Morris  
*Butterfly and Moth Motifs: A Checklist of Butterfly and Moth Images on Postage Stamps of the World, 2010 edition*, by Jack R. Congrove



- Philatelic Bookplates*, by Brian J. Birch  
*World Stamp Championship, 2004: the Grand Prix and Monte Carlo Club Members Court of Honor Exhibitor's Brochure*, presented by David Feldman  
*Tales by Mail, Book 2*, by Karen Cartier  
*Teach Yourself Stamp Collecting*, by Fred J. Melville  
*Worldwide Stamps, Collections & Large Lots: United States Featuring "ex Hackmey" Classic Covers, Collections & Large Lots, Stamp Boxes & Related Objects*, catalog for a David Feldman auction, July 2010



### NON-PHILATELIC (Railroads)

- The Great Trains*, edited by Bryan Morgan

### NON-PHILATELIC

- Ocean Liners of the 20th Century*, by Gordon Newell  
*Mapping the West: America's Westward Movement, 1524-1890*, by Paul E. Cohen

*Poster Stamps: German Aircraft*, by Charles Kiddle (World Poster Stamps, Alton Hants, UK; 2006; 254 pages);

*Poster Stamps: German Aviation: Zeppelins (and other aircraft)*, by Charles Kiddle (World Poster Stamps, Alton Hants, UK; 2007; 254 pages).

*Reviewed by John H. Bloor*

There are many catalogues that you can use to learn about postage stamps. This is not the situation for cinderella stamps, also known as labels, vignettes, or reklamemarken. There are few catalogues or books and often there is limited information even in those that are available. There are exceptions. For example, did you know that the RMPL has catalogues for trading stamps (aka "green stamps", named for one common type); and for TB and Christmas seals; and for some other cinderella material?

This dearth of cinderella reference books is gradually changing. New lists and catalogues, often with color illustrations, are being published. Cinderella catalogues are particularly important because, unlike postage stamps for which records are usually kept by the issuing governments, information about cinderella design and production are seldom known. Color images are also important because this lack of information means that there are few characteristics that can be used to identify a particular vignette. Additionally, many people collect poster stamps for their attractive designs and colors which are not seen with black and white illustrations.

Many of the new catalogues are being written and published by Charles Kiddle, a longtime cinderella collector and author of many articles on the subject. The two catalogues of German aviation poster stamps that are reviewed here are from his World Poster Stamps publishing company online at: [www.posterstamps.org.uk/index.php](http://www.posterstamps.org.uk/index.php) You can read more about poster stamps, their catalogues, and related subjects at this website and in the introductions to the two books.

Both books deal with German poster stamps issued before 1940 (with a few exceptions), which depict aircraft and related subjects. The first covers heavier-than-air craft while the second describes stamps showing zeppelins and other lighter-than-air craft. Kiddle's catalogues are based on two earlier catalogues by Kuno Sollors published in 1971 and 1973. Kiddle dedicates the new catalogues to Sollors for his pioneering work.

That said, these new catalogues go far beyond what could be achieved in the early 1970s. They are functional works of art, providing beautiful illustrations, making it easy to identify the vignettes, in the framework of a new numbering system which will help collectors and dealers identify what they have and what they need. The stamps are given a rarity factor which can be used as a relative value in any currency.



The catalogues lack indexes because, according to the author, "... without a German language keyboard, this proved too difficult to achieve." Indexing is always tedious but this explanation seems to me rather disingenuous. Word processors allow insertion of virtually any character (e.g. umlauts) and, even if that is too difficult, the absence of these markings would have detracted minimally from the great usefulness that an index would have added.

Both books have tables of contents which provide guidance to their organization and a prefatory section which gives a brief history of poster stamps. An introduction tells how the catalogues came about, gives information on rarity and pricing, describes how to use the catalogue, and thanks the many people who contributed images and knowledge.

The bulk of each catalogue consists of pairs of pages. The left hand page has a table of catalogue numbers and rarity factors, with footnotes providing additional details about the stamps. On the opposite (right hand) page are color images of the vignettes listed in the table. Although the layout of the numbers in the table is supposed to mimic the layout of the images on the right hand page, I frequently found it confusing to decide which catalogue number matched which image. It would have been useful to have the catalogue numbers printed directly below each image but this may have been contraindicated by production requirements.

When I started looking through these books, my personal collection suddenly seemed more limited than I had thought. I've never even seen perhaps a quarter of the stamps depicted, and have less than half of them. It's only going to get worse. Kiddle has promised two more German aviation poster stamp catalogues covering the same periods, on the subjects of German balloons and the "Flugsportserie". Looking at it positively, though, that just means that I still have lots of stuff to collect! You really should look at these books as well as other catalogues by Kiddle. They set a standard by which future catalogues can be measured. They might even convert at least a few of you to cinderella stamp collectors – the books are magical.



## RMPL BIG SALE COMING NOVEMBER 13

The RMPL is planning a special sale on Saturday, November 13th.

From 10:00 AM to 3:00 PM stamps in the "Prices as Marked" books will be for sale at 50% off the currently marked price. So a \$10 catalog value item that is currently marked \$4 can be yours for just \$2. Come early to get the best selections. We plan to have other items for sale also.

## RMPL Silent Auction at 2011

### Rocky Mountain Stamp Show Will be Best Ever

By: David Weisberg, RMPL Auction Manager

RMPL's annual silent auction at the 2011 Rocky Mountain Stamp Show (ROMPEX) is shaping up to be the best we have ever held due to several generous donations.

The Kitty Wentworth estate provided us with some excellent France and Japan material. To quote one long-time Japan collector, "This collection has all the key items that I am missing." The material includes singles, sets and souvenir sheets, most of the latter include folders which is the preferred way of collecting them

A major focus of the auction will also be the Bill Stolfus collection of very-fine to extremely-fine mint U.S. stamps and early U.S. postal cards most in mint condition. At the high end, these include Scott 89 and Scott 534B, both mint and well centered. The key postal cards are Scott UX17, the front facing McKinley in used condition. The United States Postal Society maintains a census of this card and this is a

newly identified card that was not previously listed. The other key postal card is Scott UX31, a one cent overprint. The two stamps and the UX31 card have been submitted to the APS for expertizing.

Other items from this collection include Scott C1 to C6 airmails, a set of Zeppelins, Kansas and Nebraska overprint sets, Pilgrim Tercentenary, Columbians through the 10 cents and the 30 cent, Trans-Mississippi through the 10 cent, a Washington bi-centennial set and a very nice White Plains sheet. All are mint, most are VF or better and nearly all are NH.

In addition the auction will have hundreds of lots from all over the world that will be valued at \$20 to \$50 with starting bids as low as \$2.

More information will follow in upcoming issues of *Scribblings*.

## GOLD MEDAL NIGHT at RMPL: Friday, November 12th

The RMPL is launching an activity to promote philatelic exhibiting by members who have wanted to exhibit, and have searched high and low for the process by which to take that fateful step. That's our "Gold Medal Nights" which (depending on response) will be held once a quarter at the Library on a Friday or Saturday night (to be announced in *SCRIBBLINGS*).

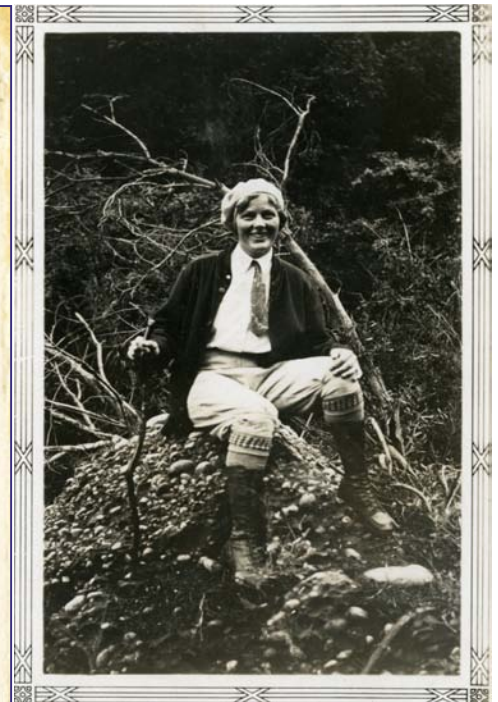
"Gold Medal Nights" will provide an opportunity for recent gold medal recipients at national stamp shows (of which we have half a dozen in the Denver metro area) to be recognized and to provide attendees insight into the process involved in developing and polishing their gold medal winning ways. In this way, we hope to provide a question and answer/analysis forum for the audience to learn more from "those that have been there" about exhibiting and their particular philatelic topic.

Our first "Gold Medal Nights" presenter will be Steve McGill on Friday, November 12th at 6:30 pm. Steve will be using his "Britain's Marvelous Machins" to outline for the audience aspects of the exhibiting process that he has learned to appreciate in the past year from his achievements at ROMPEX and CHICAGOPEX. Prior to those shows, Steve had been a relative novice in the world of philatelic exhibiting. Steve will be using three frames of his exhibit to present aspects of the exhibiting process in his 20 minute presentation, followed by discussion with the audience of his approach in the journey, obstacles, challenges, and the birth and growth of the exhibit.

Refreshments will be available for attendees. Those intent on attending "Gold Medal Nights" should contact Don Dhonau (303-322-6039) or Dalene Thomas so that we have an idea as to the number to anticipate for the evening.

## RMPL "Classified" Want or Trade Items

The RMPL will begin a new "classified" section beginning with the January issue of *Scribblings*. Free to library members and limited to 25-words each we will list any philatelic item you are looking for or want to trade. E-mail to: *Scribblings Classified* at [hillwright@mac.com](mailto:hillwright@mac.com) or place in the *Scribblings* mail box at the library.



Miss Esther L. Brown. Dumont, Iowa

## Yes, there was a real Miss Esther L. Brown, in Dumont Iowa ... the puzzle is solved

Well, some guessed that she was Esther L. WOOD, BARR, GOLDBAR, or BRICK. The gun showed the Miss, E-Star (Esther) and the color bar was Brown. The city was Dum-on-T (Dumont) and I am sure you all figured out the Eye-Oh!-Ah! But we have three Perfect Winners - **Frank Leitz**, **Rosalie Bock** and **Lewis Bussey** who all correctly identified the puzzle. One person even went so far as to locate the Brown Memorial Library in Dumont, Iowa, and concluded that that must be the correct last name. Now, here is the rest of the story.

First, the artist was Robert Lyle, of Hollywood, California. Esther Lucille Brown was the daughter of George Brown who founded the Brown Memorial Library in Dumont, Iowa. Esther was the aunt of Charlotte Adgie, wife of the late Peter Adgie, former member of the RMPL. Charlotte (Brown) grew up in Dumont. The artist was a good friend of Esther and both were world travelers. Esther lived in Tacoma, Washington and in Santa Monica, California, returning to Dumont each summer. Lyle also made a number of illustrated cachets mailed to Esther and preserved by Peter and Charlotte.

Honorable Mention and a B+ grade goes to our readers who came close with almost-perfect answers to the puzzle. **Todd Myers**, **JoAnne Curran**, **Stephen Hart** and **Norm Ritchie**.

## PERIODICAL PICKIN'S

by Sergio Lugo

This issue's focus is *The Holy Land Postal History (HLPH)* official publication of the Society of the Postal History of Eretz Israel based in Israel. The publication began in September 1979 and continues to this day. The RMPL has copies from the first issue through whole number 103-104, in 2006. The late Felice Vainer was the largest donator of the publication.

Early issues were presented in black and white and in English for the first half, and in Hebrew for the last half of the issue.

The Hebrew language portion of the HLPH

appears to have disappeared some time in the past. The most recent 78 page, color, perfect bound issue that we have (2006) is written entirely in English. The large number of philatelic articles spans all of the Middle East, not just Israel. As the society's name implies, the Holy Land includes this large area and the periodical devotes itself to much postal history, including Arab and Israel material.

Advertisements appear in each issue after the articles. The society's website is [www.zobbel.de/stamp/org#SPHI](http://www.zobbel.de/stamp/org#SPHI).

# Colorado's Postal Past ...and the RMPL

By Roger Rydberg

Recently, RMPL President Sergio Lugo suggested that a column featuring Colorado Postal History be started in *Scribblings*. At first, all I could think of was something else for yours truly to do. Then, I got to thinking and realized that if it were not for the camaraderie of a group of friends that collected Colorado Postal History, the Rocky Mountain Philatelic Library might not be here today.

This all started with Bill Dunn and Jack Willard having lunch together on Saturday. They went to the Jersey Inn for a burrito, probably a beer or two, and many stories. This lunch had been going on for some time and at some point Don Beuthel started to attend and, now and then, Jim Ozment was in attendance. They always talked about finding "fresh meat" (new Colorado Collectors) and, guess what, Don got me started collecting Colorado Postal History and attending the lunch. I think Don felt that he was the "fresh meat" at the time and wanted to pass the title on to an unsuspecting friend.

This happened in the late 1980's and early 1990's and at some point the "Burrito Meeting" moved to a restaurant on East Colfax. With the move the group started to grow with Jim Kilbane becoming a regular although he was working in Albuquerque at the time, Erwin Engert stopped by from time to time, and Bill Bauer attending whenever he was in Colorado for ROMPEX and researching Colorado Post Office sites.

At some point, Bill Dunn suggested that we should start a philatelic library here in the Denver area. We all thought that this was a good idea, Jack said he would donate his western history / railroad library to get things started and Don jumped right in and convinced Ellengail to be the librarian.

Well, nothing much happened about a library until Bill arrived at a lunch with State of Colorado incorporation papers announcing that he needed five signatures on the document and said, "I will be the first". Sure enough, it went around the table and the signatures were obtained. Bill Dunn, Jack Willard, Don Beuthel, Jim Ozment, and Roger Rydberg signed the papers.

So, here we are today, a library serving over 500 members and it all started over a few burritos, beers, and stories by a number of friends that collected Colorado Postal History.

---

## Greeley, Colorado

I will start this series with a cover from Greeley, my hometown. My grandfather arrived in the early 1880's and farmed in the area known as "Farmers Spur", 7 miles west of Greeley.

Greeley, first known as Union Colony, had its beginnings when Horace Greeley, publisher of the *New York Tribune*, visited the west, traveling to San Francisco, in 1859. Soon after, he sent his Agriculture Editor, Nathan Meeker to Colorado to locate land for an agriculture colony for "Men of Temperance and willing to establish a good society".

A site was selected near the Cache La Poudre and South Platte Rivers that would eventually become Greeley, Colorado Territory.

Post Office Department records show that the Greeley Post Office was established on April 21, 1870. The first colonists however, did not arrive until early in May 1870.



May 31, 1870 - Two 3¢ 1869 Locomotive stamps pay the domestic rate for a 1/2 - 1 oz letter. The earliest known example of a postal marking from Greeley.

### References:

*Colorado Post Offices*, by William H. Bauer, James L. Oxment, and John H. Willard; 1990; Colorado Railroad Museum; Golden, Colorado; 280 pp; illustrations, maps.  
*The Union Colony at Greeley, Colorado*, James F. Willard, Ph.D, Editor; 1918; W. F. Robinson Printing Co.; Denver, Colorado; 412 pp.

# Rocket Mail To New Jersey

by Art Lizotte

During a recent trip to New Jersey, I visited the historic town of Hewitt whose history dates back to the 18<sup>th</sup> century. Hewitt's iron furnaces at Long Pond Iron Works had a place in civil war history because the iron produced there was excellent for making gun barrels.

Adding to its claim, Hewitt also holds a significant place in philatelic history as the location of the "First American Rocket Airplane" flight to carry mail across a state line. On Sunday, February 23, 1936 the *German Rocket Society* and the

Rocket Airplane Corporation of America launched a rocket plane from Greenwood Lake, NY toward Hewitt, NJ, successfully carrying mail between the two states.

It was a cold, clear day when a crowd of more than 500 gathered on the thick ice of Greenwood Lake near the Morningside Country Club to witness the new rocket plane technology. Many of them had purchased a small stamp (label) that commemorated the flight. The label was placed on either a post card or a letter that was to be transported by the rocket plane. The excitement grew as the rocket plane, *Gloria*, was dragged onto the ice on toboggans by her technicians. She was a small plane, about 13' long and a 15' wingspan, powered by a rocket motor.

Little Gloria Schleich, for whom the rocket was named, christened the rocket plane with her snow-filled tin cup. John Schleich, Gloria's father and a good friend of Fred Kessler, would later become mayor of Greenwood Lake. Fred Kessler, president of the Rocket Airplane Corporation, a NY stamp dealer and a prominent member of the American Air Mail Society, loaded the asbestos bag containing the postal cargo into the nose of the rocket plane. The *Gloria* was placed onto the launching platform, which was set to a 20° incline and equipped with a catapult.

Willy Ley, president of the *German Rocket Society* and the rocket's inventor, wearing an asbestos suit, lit the fuse to the rocket motor and backed away. The *Gloria* shot into the air about 40 feet, sputtering all the way, then fell back to earth, crashing into the ice.

The good news was that the team had built two rocket planes and after moving the mail bag to the second plane, now dubbed *Gloria II*, readied it for launch but opted not to use the catapulting platform. The *Gloria II* rose off the ice, climbing to 50 feet above the frozen lake. She dipped and skidded repeatedly across the ice, traveling a total of 2000 feet from her starting point and across the NY-NJ state line.

Fred extracted the mail bag and handed it to Hewitt's Postmaster White who carried the bag to his post office, cancelled the letters & post cards and sent them on their way.



Above: Cover with green label and purple hand stamp.

(Note that there are numerous conflicting accounts for these flights.) In Dr. Max Kronstein's book, *Rocket Mail Flights of the World to 1986*, he states it was the first rocket plane that carried the mail across a state line, while author Samantha Vaughan, in *Images of America West Milford*, states it was the second. Adding to the confusion, in the *Ellington - Zwiesler's Rocket Mail Catalog*, the authors suggest that both rocket planes carried mail without distinction – I believe this adds to the credibility of Vaughan's account that I used in this article.

What is consistent in these accounts is the description of the rocket's flight that carried the mail across the state line and that there were two rockets fired that day.

More than 6000 privately-printed commemorative labels were sold for 50¢ and 75¢ to stamp collecting enthusiasts, which contributed to the financing of the experiment. The imperforate labels were printed in two colors, red and green. The red 50¢ label was placed on the picture post card of the rocket plane, cancelled with a green commemorative hand stamp and franked with a 1¢ US stamp. The green 75¢ label was placed on an envelope, cancelled with a purple commemorative hand stamp and franked with a 16¢ Special Delivery Air Mail stamp.

Notice that the commemorative hand stamp has the date of February 9, 1936. The experimental flight was originally scheduled for the 9<sup>th</sup> but the rocket failed badly (suspected sabotage) and the flight was rescheduled for the 23<sup>rd</sup>.

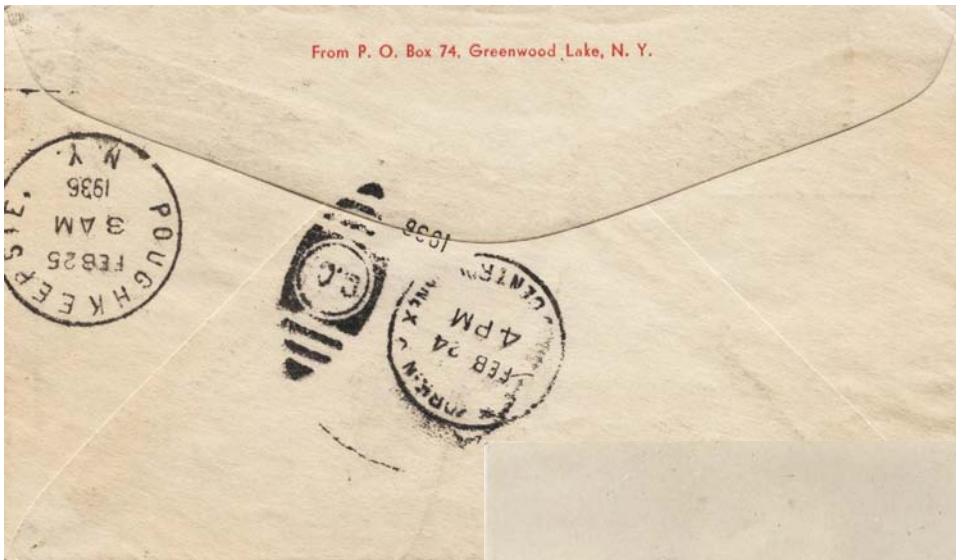
Willy and Fred autographed many of the flown post cards and covers, both individually and collectively.

Why deliver mail by a rocket plane instead of using the already established air mail system that used airplanes? Well, that's just it. Fred Kessler and the Rocket Airplane Corporation wanted to prove that rockets could deliver the mail faster and to more remote places better than airplanes. Unfortunately, the technology did not yield this efficiency. Nevertheless, there were many experiments conducted around the world by people like Gerhard Zucker in Germany, Stephen Smith in India, Freidrich Schmiendl in Austria and by many others.

In the US, on June 8, 1959, the first US Post Office

experiment was conducted when a guided missile was launched from the Navy submarine *USS Barbero* (SSG-317). The missile carried 3000 letters from Postmaster General Summerfield to select government officials and prominent citizens. This government-sponsored experiment, however, failed to establish rocket mail as a

viable solution for the fast delivery of mail. Today, rocket mail is still being created but it is entirely philatelic. To my knowledge, there is no scheduled rocket mail service in the world. Airplanes and helicopters have solved the delivery problems that might have been addressed by rocket mail.



Above: Reverse of the cover shown on the opposite page.

Right: Real photo post card showing the rocket plane in the air over Greenwood Lake.



Below: Cover with red label and green hand stamp.



## RMPL SHIRTS NOW AVAILABLE



Here's your chance to look elegantly dressed at stamp functions and show you're a member of the RMPL. It's something some of you have asked for over the years, and we've finally got it at a reasonable price for all of you. Shirts are \$22 each (the RMPL's cost). At least 24 shirts have to be ordered to secure this price.

### FEATURES

MEN'S		WOMAN'S	
Contrasting color of neck tape		Contrasting color of neck tape	
Welt cuffs & half moon back yoke for clean lines	Double-needle construction + half-moon back-side neck		
3 button placket, reinforced box		6 marbelized buttons with metallic silver ring	
Solid rib-knit collar and double needle construction		Solid rib-knit collar and cuff and hemmed sleeves	
Straight tail hem and side vents		Straight tail hem and side vents	
6.8 oz. 100% ringspun comb cotton double pique material		6.8 oz. 100% ringspun comb cotton	
Left chest pocket for pens			

TO: Dalene Thomas, RMPL, 2038 S. Pontiac Way, Denver, CO. 80224

I'd like the following quantities of the RMPL Polo Shirt:

### Order Form

Quantity	Shirt	Size (Circle One)	Price	Total:
	Men's	S M L XL 2L 3L 4L 5L	\$22.00	\$
	Woman's	S M L LX 2X 3X	\$22.00	\$
	Sales Tax		@ 4.4%	\$
	S/H	If not picked up at RMPL	\$2.00 per shirt	\$
			<b>GRAND TOTAL:</b>	\$

Please make payment payable to RMPL



## Bulk Lot Auction Reaches New Milestone

The fourth annual bulk lot auction was held on Saturday October 2 at the RMPL. It proved, by far, to be the largest such auction in the Library's history, surpassing several benchmarks established in past auctions. There were a record forty (40) mail bidders plus forty-one (41) bidders on the floor. Surprisingly nearly 30% of the mail bids were successful (in previous auctions winning mail bids amounted to about 25%). The 41 floor bidders in attendance were also a high number over the previous high of 32. This year there were a total of 146 lots, 35 more than last year's high. The

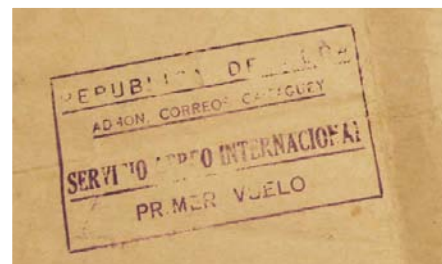
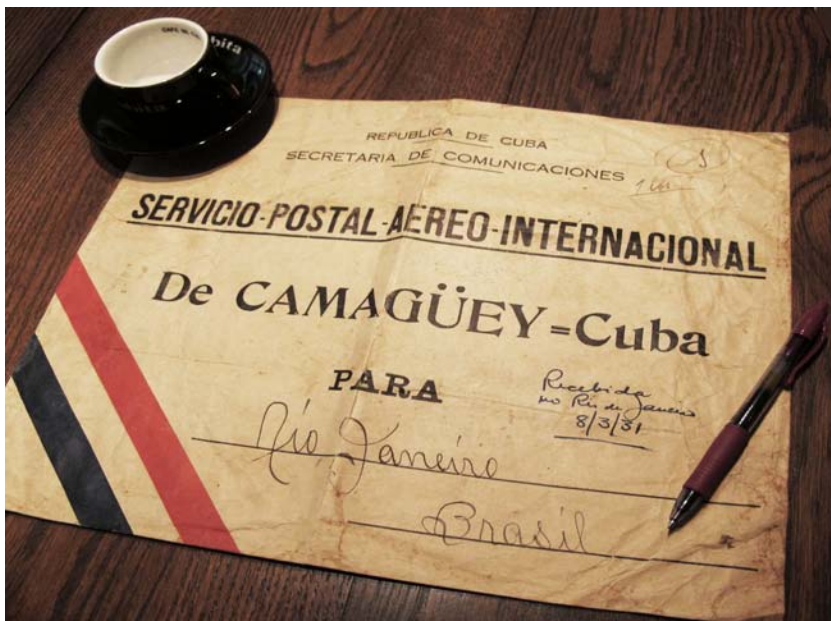
single highest bid in this auction fetched the princely sum of \$1,400 - far exceeding the previous high of \$650. 94% of all lots were sold, with an average of 5.5 bids (mail and floor) cast for each lot. A total of \$10,200 was raised in the auction just slightly less than last year's total. Our thanks to all who bid and participated and to all those volunteers who made for an enjoyable three and one half hours, including: Roger, Richard, Howard, Steve, George, David, Erl, Sergio, Frank, Gene, and Bob.

## OLLI "World History on Stamps" Program to Repeat in January

The current 8-week OLLI program in Denver on *World History on Stamps* presented by RMPL members will be repeated as a Winter program in Golden beginning in January. The present classes at OLLI Central are held at the Central Christian Church at 3690 Cherry Creek Drive South, in Denver. The OLLI-West program in January will be held at the Jefferson Unitarian Church, 14350 W. 32nd Avenue, Golden. Steve Nadler and Ronald Hill are co-facilitators of the program. Jack Van Ens, Sergio Lugo, David Weisberg, and Camille Bradford are presenters of individual programs. The previous issue of *Scribblings* contains the complete program. See Steve or Ron for complete information on joining the program.



# First Flight Cover?



(left) Cover is about 36x26cm and bears no postage.  
(above) Purple handstamp (Primer Vuelo-First Flight) is the only marking on the back.

What is it? It looks like an international first flight cover from Camaguey to Rio de Janeiro in March, 1931, but it lacks postage and transit and arrival markings. What route did it take?

by Ronald Hill and Mark Tyx

The item shown is not a first flight cover but rather a mailing envelope (or mail pouch) in which the first flight covers from Camaguey to Rio were flown on March 2, 1931. The Camaguey postal clerk placed all flight covers for Rio into the mail envelope and sealed it so the packet could be offloaded quickly upon arrival in Rio. The clerk also applied a FAM 6 rectangular cachet on the back of the mail envelope. This mailing envelope is a seldom seen item since most mailing envelopes like this were destroyed upon arrival at their destination (see map #1, FAM 6 - Antilles).

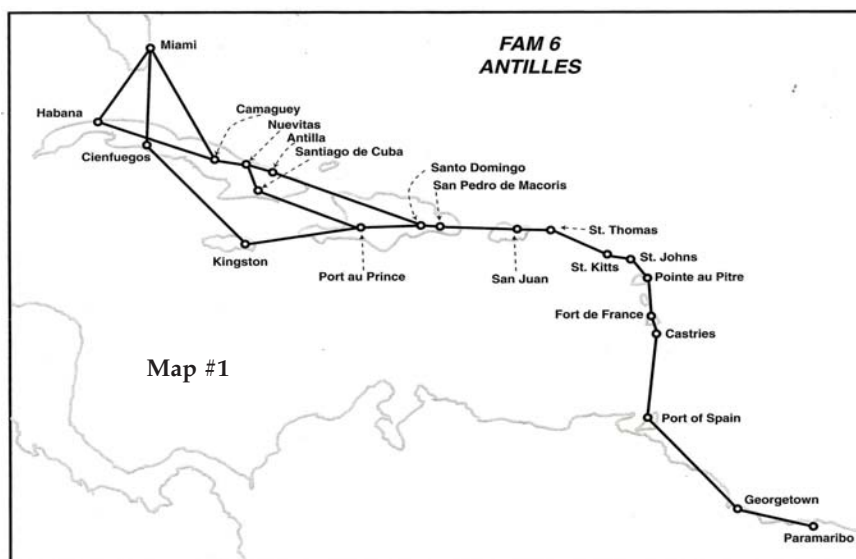
The airmail from Camaguey to Brazil was flown on a combination FAM6/FAM10 route. FAM6--Camaguey to Paramaribo; FAM 10--Paramaribo to Rio with termination of route at Santos in Brazil. This route was later extended to other Brazilian cities; Montevideo, Uruguay; Buenos Aires, Argentina; with termination in Asunción, Paraguay (map #2).

The *American Air Mail Catalog, 6th ed. Vol III* under the F6-84 section shows that 121 covers were flown from Camaguey

to Rio. The listing shows that covers were also flown to other Brazilian cities--Santos, Para, Maranhao, Fortaleza, Natal, Pernambuco, Bahia, and Victoria.

The flight covers to Brazilian cities other than Rio have a Rio backstamp along with a later backstamp from the destination city. It appears that all March 2, 1931, FAM 6/FAM 10 flight covers were off-loaded at Rio and then dispatched internally to their final destinations a few days later.

To complicate matters a little, many of the covers in this first flight from Camaguey to Rio originated in Habana and also have a Habana machine cancel dated March 1 and a FAM 5 cachet. These covers were forwarded to Camaguey where a March 2, 1931 Camaguey datestamp and FAM 6 cachet were applied to the back of the covers before pouching them. Once the pouch was closed the FAM 6 cachet seen on the photo above was applied to the back of the pouch or large envelope before dispatching the outbound mail to points on FAM 6 and FAM 10.



Flights from Miami in 1930-1937 via FAM 6 route to Paramaribo, Suriname, carried mail from the six cities in Cuba shown on Map #1. Mail destined to Brazil and beyond to Asuncion, Paraguay, was transferred to FAM 10 flights out of Paramaribo, Suriname.

(See Map #2 next page)



# Irish Overprinted Stamp #93 - Is the Overprint Real?

by Glenn Shaw and Travis Searls

Last issue we left off with the conclusion that the watermark and stamp in question were real indeed. But we left open the question of the overprint.

We began the saga of Irish stamp # 93. This stamp was a nice find in a recently donated collection. Scott lists the used #93 with a catalog value of \$70.00. The perfs were defined as 11 X 12 and the watermark as Irish #44, the SE in monogram. The perfs check out OK, but the watermark was not Irish #44, but British #34. Whoops! Do we have a forgery?

Maybe it wasn't a forgery. How do we find out for sure? The Eire Philatelic Association was contacted and their response said British watermark #34 was correct and Scott was in error.

At the same time Steve McGill was asked if he had any thoughts. He said the Seahorse stamp was his favorite stamp for its style and political significance. He had books and literature on this stamp and he would see what he could find. And find he did! The detail of printing, shipping and overprinting was in incredible detail. From February, 1934 to June, 1937 there were 10 shipments of the Seahorse stamp sent to Ireland. A small number were

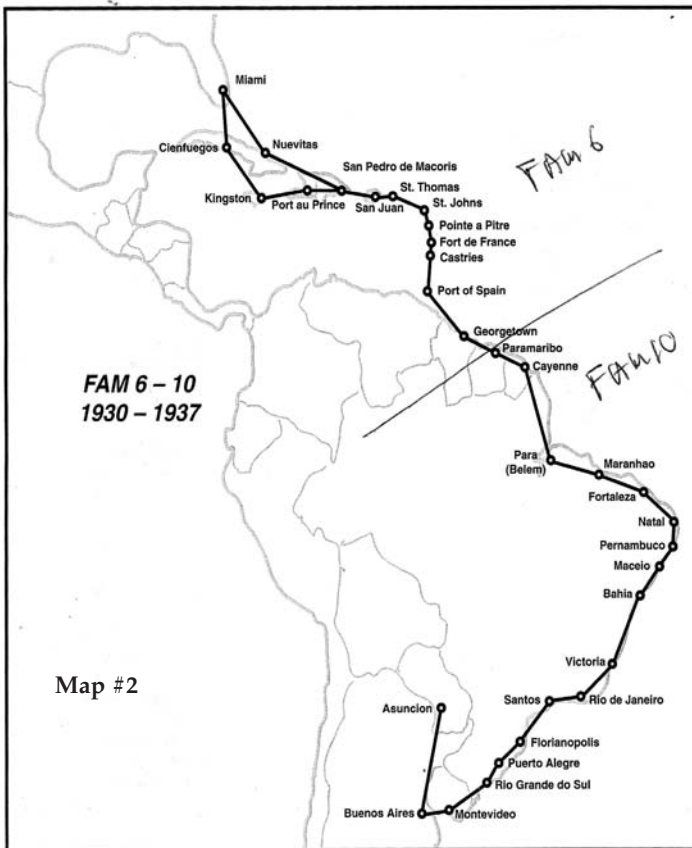


produced at first by Bradbury Wilkerson and then the largest quantities were made by Waterlow and Sons for a total of 13,633 sheets of 40 stamps each. Somerset House overprinted the first 2600 sheets and Harrison and Sons did all the remainder. The latest overprint was the same one as used in late 1922, namely "IRISH FREE STATE 1922". Conclusion? No doubt British watermark #34 is the correct one. Now to verify the validity of the overprint itself.

When looking in the Scott catalog, the overprint on the 1934 Seahorse stamp appeared to be the same or at least very close to the one used on the 1922 to 1927 issues. Travis Searls went on the Internet to see if there were references and hopefully a picture of the Seahorse stamp with the overprint.

The best reference was found, oddly enough, at the University of Notre Dame Library in a donated Irish stamp collection they had. In the write up there was a nice picture of the original Seahorse stamp with the 1922 to 1927 overprint. There was nothing showing the re-engraved Seahorse stamp with the 1934 overprint. Travis made a full page print of the reference stamp and drew lines under the overprint script to define the evenness of the printing. Travis also made a beautiful high resolution color scan of our Irish #93. We compared the two overprints and they were the same-ALMOST. The second 2 in the date 1922 was slightly lower than the rest of the numbers. This was a difference from the 1922-27 overprint. It gave us reason to wonder. Forgery or not? Curiosity was at its peak

Now we were committed to find the answer. An e-mail was sent to David MacDonnell, the expert in Ireland, along with the full page scan of our copy of Irish #93 asking for mailing instructions and the charges for judging the stamp. Mr. MacDonnell had been referred to us by Tim O'Shea of the Eire Philatelic Association. The response was very prompt and Mr. MacDonnell said the anomaly in the second 2 in 1922 was not unusual and the overprint was validated. He also said the Seahorse stamp was real. He graciously said he was reluctant to issue a certificate for the stamp because of the few faults he saw. The certificate would cost more than the stamp was worth. That was enough for us. We were happy to know that our copy of Irish #93 was genuine.



Map #2 shows the transfer point and the complete routes. For details of the Cuban cities serviced by FAM 6, refer to map #1.

## DONATIONS

The library thrives on the enthusiasm and generosity of its members. The following members have made donations to the library over the past two months. We thank each and every one who has contributed.

Charlotte Adgie	Richard	David Percel
LTC Robert Anderson	Headstron	William Plachte
Arthur Barber	Roberta	Jud Porter
Jan Marie Belle	Heisterkamp	Lloyd Richards
Tom Brey	Thomas Higel	Norman Ritchie
Jeanne Bryan	Gene Holgate	Owen Robb
Lewis Bussey	Fred Huskins	Carol Roy
Mike Carr	Ann Imes	Scandinavian
JoAnne Curran	Thomas Kean	Collectors Club
Steve Datz	George Killian	Janine Scheidegger
Kristi Daugherty	Robert Lafley	Henry Siccardi
Jeanne Davis	Joe Lambert	Richard Sisco
James Debus	Luca Lavagnino	Frederica Smith
Robert DeBus	Jeremy Lifsey	Maguerite Smith
Allen Dresher	Arthur Lizotte	William Stolfus
Robert Dunn	Clark Lyda	Harlan Stone
John Elsey	Michael Maselli	Dalene Thomas
Nolan Flowers	Dasa Metzler	Mark Tyx
Paul Gault	Benny Meyer	UPSS Publications
Gary Gibson	Thomas Moss	Emily Warner
Leland Greb	Terrence Murphy	Nancy Weber
Edward Gwinn	Bertil Nilemo	Michael Whitney
Edward Hackstaff	Steve Pacetti	Wineteer
	Ruth Penn Estate	Mike Ziegler

## NEW MEMBERS

The library is pleased to welcome the following new members who have joined in the past two months

Dennis Leczinski, Denver, CO

Joseph Campbell, Aurora, CO

## SHOWS & EVENTS

# Rocky Mountain Stamp Show

Denver, Colorado, May 13-14-15, 2011

### ATTENTION ALL EXHIBITORS:

Get your Entry Form in early for the Rocky Mountain Stamp Show (ROMPEX). For the past two years exhibit space has been sold out as early as February. Each year the show has added frames with a total of 340 frames available last year.

### 2011 ENTRY FORM and PROSPECTUS

are available now...! Go to the web page [www.rockymountainstampshow.com](http://www.rockymountainstampshow.com) to download the forms or e-mail request to: [rompex2011@comcast.net](mailto:rompex2011@comcast.net)

### FEATURED AND GUEST SOCIETIES:

GERMANY PHILATELIC SOCIETY

UNITED STATES STAMP SOCIETY

AUXILIARY MARKINGS CLUB

COLORADO POSTAL HISTORY SOCIETY

POST MARK COLLECTORS CLUB

(local chapter)

SCANDINAVIAN COLLECTORS CLUB

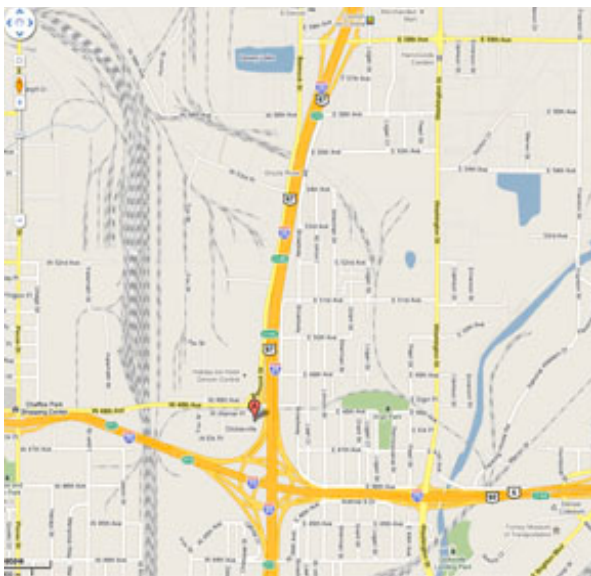
(local chapter)

UNIVERSAL SHIP CANCELLATION SOCIETY

(USS Colorado chapter)

TOPIC

(Topical Philatelists In Colorado)



## DENVER STAMP EXCHANGE

Saturday, December 4,  
10:00am - 5:00pm

at the PLAZA INN,  
200 West 48th Avenue, Denver

Contact: Patrick P. McNally,  
Box 12143, Denver CO 80212

[diealtemarke@comcast.net](mailto:diealtemarke@comcast.net)

303-433-0642



## SECOND SATURDAY PROGRAMS AT THE LIBRARY

Second Saturday programs are sponsored by the library and attract a friendly group of folks who are interested in a specific subject or who are interested in learning more about an area of philately that may be new to them. Contact Jim Kilbane if you would like to present a program.  
e-mail: [aurora\\_80017@yahoo.com](mailto:aurora_80017@yahoo.com)

**The programs begin at 9:00 AM and are over by 10:00 AM.  
Doughnuts and coffee are complimentary and all are welcome.**

**NOVEMBER 13, 9:00 AM**

### *Understanding Machins- The Early Decimal Booklet Era* by Steve McGill

British Machins represent a collecting area that extends from the traditional and straight forward 'one-of-a-kind' approach to specialist studies into fluorescence and phosphorescence. However, at whatever level of interest, this definitive series offers something for everyone. I'll look forward to sharing a hands-on primer on Machins at the November Second-Saturday meeting.

And find out what a "DG100.22.1a OFNP(T) PVA A2B 2B I2 9 TR3-B T5/B4 DLR-G" is.



**DECEMBER, 11, 9:00 AM**

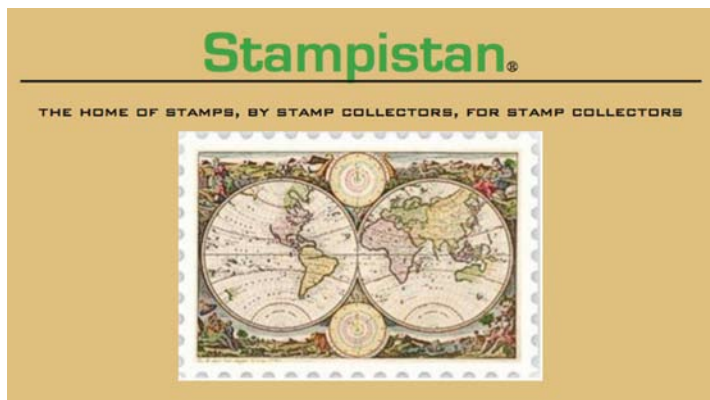
### *The 1859 Gold Rush Put Colorado on the Map* by Wesley Brown

In the spring of 1858, Colorado's Front Range area was uncharted and inhabited only by natives. But by the close of 1859, 100,000 fortune seekers had thoroughly explored the Front Range, north of Pueblo to the Wyoming border.

In their quest for gold, they left their footprints on the landscape, establishing dozens of settlements and blazing numerous trails.

This slide show and lecture will teach you about Colorado's gold rush and how this important chapter of history influenced Colorado maps of today.

## SHOWS & EVENTS



STAMPISTAN, a new online stamp and postal history auction will be opening soon. Auction developer and long time RMPL member and collector, Steve Nadler, describes Stampistan as "... an auction designed and managed by stamp collectors for stamp collectors".

Complete information can be provided  
by contacting Steve at:

e-mail [SchlomoX@msn.com](mailto:SchlomoX@msn.com) or phone 303-322-3624

## CHERPEX STAMP SHOW

**Friday, January 28, 2011  
(noon to 6 pm)**

**Saturday, January 29, 2011  
(9 am to 5 pm)**

### NEW LOCATION

**Jefferson County Fairgrounds  
Indiana and Highway 6.**



## What's Happening at the RMPL...

"Come and Enjoy the Activities"

Monday, Tuesday, Wednesday, Friday, Saturday 10:00 AM - 4:00 PM  
Thursday 2:00 - 8:00 PM. Closed Sundays and Holidays. Phone: 303.759.9921

Meeting times and places sometime change. It is best to call the library or the club to confirm the place and time. A calendar of reserved club times is kept by Operations Manager, Don Beuthel, at the library. Clubs should check the calendar regularly and notify Don (303-755-9328) of any changes or updates. All requests to reserve meeting time and space other than those listed here must be approved and scheduled by Don well in advance.

### NOVEMBER 2010

- Nov 3** - Meeting-Aurora Stamp Club.  
6:30 PM trading, 7:30 PM meeting/program
- Nov 6** - Meeting 10:00 AM  
Scandinavian Collectors Club
- Nov 6** - Meeting - 1:00 PM  
TOPIC - Topical Philatelists in Colorado
- Nov 10** - Meeting - 7:00 PM  
Denver Germany Stamp Club
- Nov 11** - **CLOSED** - Veterans Day
- Nov 11** - Meeting - 6:30 PM  
Denver Post Card Club
- Nov 13** - 9:00 AM  
**Second Saturday at the RMPL**  
Program by Steve McGill  
*Understanding Machins - Early Decimal Booklet Era*
- Nov 13** - Meeting - 10:00 AM  
Mexico/Latin America Study Group
- Nov 13** - Meeting - 11:30 AM  
Universal Ship Cancellation Society  
*U.S.S. Colorado Chapter*
- Nov 20** - Meeting - 9:30 AM  
Metro Denver Young Stamp Collectors Club
- Nov 20** - Meeting 9:30 AM  
Post Mark Collectors Club
- Nov 20** - Meeting 1:00 PM  
Colorado Postal History Society
- Nov 21** - Meeting - 2:00 PM  
Great Britain & Commonwealth Collectors
- Nov 24** - Meeting 7:30 PM Israel Stamp Club
- Nov 25** - **CLOSED** - Thanksgiving
- Nov 27** - Meeting 10:00 AM FDC Chapter

### DECEMBER 2010

- Dec 1** - Meeting-Aurora Stamp Club.  
6:30 PM trading, 7:30 PM meeting/program
- Dec 4** - Meeting 10:00 AM  
Scandinavian Collectors Club
- Dec 4** - Meeting - 1:00 PM  
TOPIC - Topical Philatelists in Colorado
- Dec 8** - Meeting - 7:00 PM  
Denver Germany Stamp Club
- Dec 9** - Meeting - 6:30 PM  
Denver Post Card Club
- Dec 11** - 9:00 AM  
**Second Saturday at the RMPL**  
Program by Wesley Brown  
*The 1859 Gold Rush/Colorado Maps*
- Dec 11** -12:00 noon Joint Holiday Party  
10:00 AM Mexico/Latin America Study Group  
11:30 AM Rocky Mountain Aerophilatelists  
1:00 PM Universal Ship Cancellation Society
- Dec 11** - Meeting - 9:30 AM  
Metro Denver Young Stamp Collectors Club
- Dec 18** - Meeting 10:00 AM FDC Chapter
- Dec 19** - Meeting - 2:00 PM  
Great Britain & Commonwealth Collectors
- Dec 24-25** - **CLOSED** - Christmas
- Dec 29** - Meeting 7:30 PM Israel Stamp Club
- Dec 31-Jan 1** - **CLOSED** - New Year's

Scribblings is published bimonthly by the Rocky Mountain Philatelic Library, Editor, Ronald Hill, 2038 S Pontiac Way, Denver, CO 80224. The Rocky Mountain Philatelic Library is a chartered Colorado nonprofit corporation and an IRS designated 501 (c)3 charitable organization. Membership subscriptions over that for the regular membership, and donations of appropriate philatelic materials, are deductible for U.S. income tax purposes.

#### RMPL BOARD OF DIRECTORS

President: Sergio Lugo - Operations Manager: Don Beuthel - Vice-President: Jim Kilbane  
Corresponding Secretary: Don Dhonau - Recording Secretary: Paul Lee - Treasurer: Bob Blatherwick  
Directors: Jan Marie Belle - Roger Cichorz - Dalene Thomas - David Weisberg, Emeritus: John H. Willard