

Scribblings

...from the Rocky Mountain Philatelic Library



Ellengail Beuthel, Librarian...

Vol. 18 - No. 3
www.rmpldenver.org

2038 South Pontiac Way, Denver, CO 80224
303.759.9921

May-June 2010
Email - rmpl@qwestoffice.net

IN THIS ISSUE

Every Four Years - Another Leap Year1, 2



The Prez' Observations3
RMPL Board Meeting...3-4
Supplies & Book Sale.....5
Post Card Discovery.....6



The Artist & the Stamp.....7



The German Coils.....7

What's New on the Shelves.....8-9

Book Review.....9-10

CartoPhilately10

A Greener RMPL.....11

Silent Auction Highlights..12

Donations13

New Members13

Other Shows13

Second Saturdays.....14

NTSS Show14

Rocky Mountain Stamp Show.....15

Calendar16

Every Four Years - Another Leap Year in Philately

by David Newell



Possibly the earliest February 29th postmark in the world.

The 29th of February occurs once every four years, making collecting this material more difficult than other dates. However, it does offer variety in collecting material, including covers, post cards, postmarks, events occurring on the 29th and people born or died on February 29th. The world's first stamp, for example, the Penny Black, was issued in May 1840. Therefore it would not be possible to collect a February 29 postmark until 1844. The cover shown below from Glasgow to Edinburgh is an example of that earliest date.

On this and the following page you will see a wide variety of philatelic items that relate to the date of February 29. These are all part of an exhibit on the subject that I am building, and is still far from complete. I recently showed ten-pages of the exhibit to the Tasmanian Philatelic Society, of which I am a member.

You will find items ranging from the former prime minister of Finland (1930-31), the Italian composer of the operas, *Barber of Seville* and *William Tell*., and the disastrous earthquake in Morocco on February 29, 1960.



Above: February 29, 1924 cover, Cali, Columbia to Apolda, Germany via New York



Right: February 29, 1908 J. Walch and Sons post card "Road to Hobart Waterworks", cancelled Hobart, Tasmania .

Every Four Years - Another Leap Year in Philately

Continued from page 1



Post Card showing a calendar of February 1908 with "29" circled and titled, "I have waited four years for this chance".



On February 29, 1960, the most destructive and deadliest earthquake in Moroccan history struck Agadir. 15,000 people were killed and another 12,000 injured. The city was evacuated two days later. It was completely rebuilt 3 kilometers to the south.

above: 1960 registered cover from Finistère, France to Agadir, Morocco on the day of the earthquake. Returned "undeliverable" due to earthquake.



September 1960 FDC with surcharged and overprinted 1955 French Morocco stamps to raise funds for earthquake victims. 2000 stamp at left commemorates 40th anniversary of the earthquake.

Gioachino Antonio Rossini, composer of 39 operas, including *The Barber of Seville* and *William Tell*, was born on February 29, 1792 in Pesoro, Italy.



above: 1942 issue commemorating Rossini's 150th birthday.



above: 1893 Liebig chromo-lith trading card showing Rossini and his birth date.



above left: February 29, 1864, Spain, Villanueva de la Serena to Safria. above right: February 29, 1884 New York, to Chelsea, Mass.



Pehr Evind Svinhufvud, President of Finland from 1931 to 1937 died on February 29 1945. Svinhufvud played a major role in the movement for Finnish independence. He was the first Head of State of independent Finland. above: cover with new 1944 Soinhufvud stamps issued to commemorate his death in 1944. Registered cover dated August 1, 1944 with seals from both Finnish and Danish censors. WW2 covers flown this late in the war within Scandinavia are quite scarce.

Hard pressed to meet an earlier than normal deadline for this month's *Scribblings*, I was driving home one cold and blustery evening when lo to my wondering eye appeared a meteorological phenomenon that I adapted as an allegory about our hobby and the RMPL.

I was picking up some material for remodeling of the 7070 East Asbury facility when I crossed one of those ridges in Denver where you can see for miles and miles and miles. There are at least 3 or 4 such ridges in the metro area, including a man made spot - namely the west side of the Jeppesen Terminal at DIA. These spots provide a panorama of the entire front range - from as far as Long's Peak to the north, and south beyond Pikes Peak; in other words, a view in one eyeful of about 100 miles. On this particular evening, one storm front was moving out, while another was roaring in. Both storm fronts were black and laced throughout with inky black clouds. In between for the full length of the front range was a spectacular band of light blue sky, probably no more than 3 miles wide. It was a sight to behold. None of that "surreal" nonsense - just a wonderful sight in the evenings twilight that rarely presents itself.

Not coincidentally, as I was driving along, the clear definition of blue sky began to crumble and be absorbed by the front and rear edges of the storm fronts. I thought - isn't that a great parallel/allegory to our hobby and the library? Namely, the blue sky represents a clear spot in our daily lives where the calm and serenity of the hobby allows us, as individuals, to fend off the storms swirling around us in our every day lives. I was reminded at that moment of

two members at the library. One had visited earlier in the day. He managed to get back to his stamps after several months of inactivity caused by preoccupations in his daily life. "There is always a place for my worldwide collection", he exclaimed, "and the library had a bunch of stamps that I didn't expect to find to fill those empty holes nicely, thank you. The other has been a long time Denver area philatelist, of whom we had just received word was suffering from poor health and pneumonia. He, Mark Vainer, has always been characterized by a steady, cheerful temperament, whose bright, sunshiny, nature was never dimmed by the storms and vicissitudes of life.

And while we can't forever keep those storm fronts from colliding and breaking down the clear definition of our blue skies, the library, I hope, provides a place to stave them off by providing a quiet place of relaxation, pursuit of the hobby in all its dimensions (whether it be research, collecting, or reading) and, above all, good comradeship and pleasant conversation and socializing. And we now are planning the gardens to help in staving off those cloudy days.

So, please, won't you continue to enjoy our hobby and spread that good cheer far and wide with the library complementing your collecting interests in every way possible. And for those of you interested in the rest of the story - it did snow that night, followed by bright sunshine and rapid snow melt the next day.

Sergio

March 18, 2010 RMPL BOARD MEETING

All members in attendance, except Jan Marie Belle.

For the Record items: David Reitsma won a Gold Medal for his exhibit: International "Air Mail Saves Timer" at the Garfield-Perry Stamp Show. Congratulations to a first time national exhibitor. Next meeting is scheduled for Thursday, May 20, allowing us to avail ourselves of 5 weeks before the National Topical Stamp Show.

Committee Reports: Nothing to report since January Annual Reports were comprehensive and thorough. Paul Lee reported an upswing in ebay sales with an increase in higher priced items. Ron Hill advised that he will be attempting to get *Scribblings* out by April 15th in order to allow the RMPL auction as much exposure as possible before the Rocky Mountain Stamp Show. David Weisberg reports that the auction catalog is nearing completion and will be posted on the RMSS and RMPL website well before the end of April.

Treasurer's Report: Financial reports accepted and approved. Bob Blsatherwick is awaiting the results of the audit conducted by the firm of Ken Roth and Taylor. A special report has been developed by Bob, covering expenses for the new building remodeling and the electrical rewiring at 2038. Funds collected from the sale of carpet swatches (over \$1,000) have not been taken into account in reducing the total expenditures.

OLD BUSINESS:

The electrical rewiring project in the 2038 building is roughly \$2,000 under budget (\$7,000) at this point, with anticipated expenses expected to climb as the finishing work continues.

The Board agreed, by a vote of 8 to 1, to secure Director's and Officer's (D&O) insurance.

Revisions to the RMPL By-Laws are being studied by Roger Cichorz and David Weisberg for future presentation to the Board.

Continued next page

March 18, 2010 RMPL BOARD MEETING

Continued from page 3

The idea of a "Night at the Library" to recognize gold medal exhibit winners was discussed, with Don Dhonau and David Weisberg volunteering to develop the activity. The purpose would be to honor RMPL members who have received gold medals at national stamp shows. In the past several months, members Steve McGill, David Reitsma and Tim Bartshe have received gold medals at national shows. The activity would not be regularly scheduled but intended to honor medalists, and geared towards a "docent" presentation by the medalist featuring frames from the exhibit in the meeting room.

NEW BUSINESS:

The RMPL table at the Rocky Mountain Stamp Show will be staffed by David Weisberg and volunteers being solicited from the membership. Tours of the library will be offered from the RMSS site at 10 am and 1 pm on Friday and Saturday.

The Women's Exhibitor group has expressed an interest in touring the library on Thursday evening, May 13th, but nothing has been firmed up. Sergio Lugo will pursue the matter further.

Dalene Thomas is looking for help with a permanent cadre of volunteers to staff the RMPL table at shows. She has enlisted Frank Leitz to be her backup whenever she is out of town, volunteers are still needed.

In budgeting the alarm system for the new building, we had budgeted monthly monitoring charges but not the costs of installation. Among the three companies from which bids were secured, we noted that as installation costs declined, monthly monitoring costs increased. The Board decided to leave the matter in the President's hands to negotiate the best rates possible in balancing monitoring and installation costs

The National Topical Stamp Show will be held in late June, 2010. A reception has been planned at the RMPL by the American Topical Association for ATA members on the evening of Friday, June 22nd. Transportation arrangements are being handled by ATA. Catering will be by Don Dhonau. Volunteer docents will be from among the RMPL membership to explain to the visiting topicalists the operations of the RMPL.

There will temporarily be a vacant office in the 7070 E. Asbury offices area that will be allocated by the Board in the future.

A special sale of the Frederick Mayer estate's philatelic supplies will be held on Saturday, June 26th to coincide with the visit of the ATA to Denver. The Mayer estate's donation includes large quantities of duplicate new material most of it still unopened in its original wrapping. These supplies will be on display during the week of June 20-26th in the RMPL Conference Room. The sale will be held in the large meeting room. Items will be sold at approximately 40% of their current value.

A mission statement for the RMPL's Map Collection was drafted by members/curators Carl Barna and William Crabbs. The mission statement is being reviewed by Don and Ellengail Beuthel. The Board expressed its thanks to Carl Barna, who has since moved to Pennsylvania.

Donated material. It is the policy of the RMPL not to accept donations which have little relevance to the library's mission.

The meeting adjourned on time (namely 9 pm) for the first time in a year!

The next Board meeting is scheduled for May 20th. The audit summary will be a key feature of the meeting.

SILENT AUCTION CATALOG and MAIL BIDDING FORM
Enclosed with this Newsletter

Visit The RMPL Web Page & Online Catalog
www.rmpldenver.com

Huge Book and Supplies Sale

June 26, 2010; 10:00 am to 4:00 pm



Thousands of dollars worth of never used stamp supplies, albums, plus many unusual and useful items from the estate of the world class collector, Frederick Mayer of Denver who was also a long time member of the RMPL library.

The entire collection of supplies and books will be on display during the week of June 20-26 in the new Conference Room downstairs in the 7070 E. Asbury Street building.

The final sale will be held on Saturday, June 26, in the new RMPL meeting room from 10 am to 4 pm . Stop in on your way to/or from the National Topical Stamp Show being held the same weekend.

The Mayer Book and Supplies Sale consists of a wide range of material with a retail value of approximately \$14,000 which the library will sell at 40 percent or less, of retail. Books cover philatelic subjects, western history, numismatica, auction and price catalogs.

The supplies include *Scott, Lindner, Elbe,* and *Allsyte* albums and *G&K* sheet binders. Other items include a large supply of hinges, cover holders, and stock pages. Other items include magnifiers, tools and various philatelic apparatus including a philatelic microscope with a retail price estimated at \$800.

Funds raised will be used to defray mortgage costs to the library.



Post Card Discovery

by Steve Nadler

This postcard was purchased at the recent Postcard Show on January 16th for \$.25 from the Post Card Club inventory at the show.

The face of the card shows the "New Bridge Across the Savoureuse". The Savoureuse is the river which transects the French city of Belfort. The city's symbol is a huge sandstone lion carved by Frederic Bartholdi the sculptor of New York's Statue of Liberty.

Belfort commands a strategic position in the Alsace and Bourgogne areas between the Vosges and Jura regions. Estimated population circa 1985 was 52,700.

In 1871 Belfort surrendered to Prussia after a 103 day siege. In recognition of the heroic resistance shown by the townspeople it was granted the right to remain French thus becoming the smallest department in France and earned the designation "Territoire De Belfort". Today Belfort is highly industrialized but the landscapes remain largely unspoiled between the Jura and the Vosges.



approximate location of Belfort

The postcard was sent from Belfort with a circular date stamp that indicates "The Territory of Belfort", dated May 31, 1907 at 1745 (military time) or 5:45 pm.

It is addressed to Monsieur Jos R. Taylor at the Zang Brewing Co., Denver, Colorado from George Kubler.

It is franked with a 10 centime Semeuse (Scott 138, Maury Ceres & Dallay 129 II). It is the correct postcard rate from France to the United States (valid May, 1904 to July, 1907). It has a 2009 Maury Ceres Dallay catalog value of 10 Euros without consideration of the specific postmark(s).

The postcard is further marked with an in-transit "Paris Etranger" circular date stamp of June 1, 1907 at 530 am (military time). Lastly, it shows a "receiving" circular date stamp of Denver, Colo, June 1, 1907 at 8:30 pm. Accordingly, it took 11 hours 45 minutes from Belfort to Paris, and 15 hours from Paris to Denver! Not as fast as e-mail, but almost!





The Artist and the Stamp

Construction is under way for Denver's newest art museum, the Clyfford Still Museum, located downtown on Bannock Street near 12th, right behind the Denver Art Museum.

Coincidentally, perhaps, the new *Abstract Expressionists* sheet of ten new stamps was issued on March 11, 2010. One of the ten artists honored is Clyfford Stills, whose works will be the feature of the new museum. To quote from the sheet, "... this group of artists with radically different styles created



The 44c stamp honoring the work of artist Clyfford Still was released on March 11, 2010

a new visual language based on color, motion, and the expression of universal truths".

Watch for the opening of this museum later this year. This event will add to the growing recognition of Denver as an important center of art and culture.

The German Coils; "Eiferstreifen Bonanza"

The RMPL was the beneficiary of almost 600 pieces of Gene McGurer's Germany stamp collection. The "Eiferstreifen" refers to the "strips of eleven" most common form of these coils.

The coils that make up the bulk of this collection are not listed in Scotts, only the individual stamps. However they are listed in the English Version of the Michel Germany Specialized Catalog.

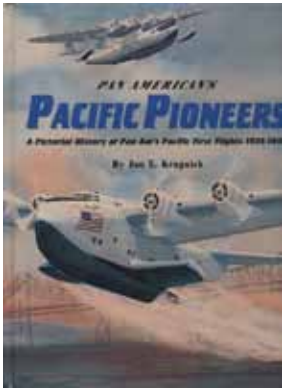
The RMPL will be selling much of this collection at about 40% of the US prices in the Michel Catalog.

For complete information on this sale please contact Howard Benson at the RMPL library.



WHAT'S NEW ON THE SHELVES?

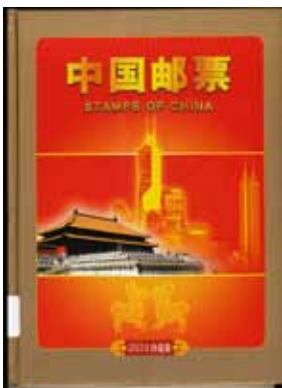
UNITED STATES



- Brookman United States, United Nations & Canada Stamps & Postal Collectibles* (1956)
- Harris Catalogue Collector's Guide U.S. Postage Stamps Complete* (1968)
- Pan American's Pacific Pioneers: A Pictorial History of Pan Am's Pacific First Flights 1935-1946*, by Jon E. Krupnick
- The Pony Express: The Collection formed by Thurston Twigg-Smith*, by Robert A. Siegel (auction catalogue)(Western History Collection)
- The Postal Stationery of the Possessions and Administrative Areas of the United States of America*, by George T. Krieger (catalog, 2009)
- Understanding Transatlantic Mail, Volume 2*, by Richard F. Winter

AFRICA

- Egypt: Postal Services in the Suez Canal Zone, 1838-1880*, by Samir Amin Fikry
- Occupation Stationery of the Transvaal, 1900-1908*, by R. Timothy Bartshe
- Orange Free State Postal Cards of 1881-1900*, by R. Timothy Bartshe
- Orange Free State: Republican Postage Issues 1868-1900*, by R. Timothy Bartshe



ASIA

- China's Large Dragon Stamps: Papers of the Academic Symposium*, distributed by the All China Philatelic Federation at the 110th Anniversary Conference, July 1968, Beijing.
- The Duloz Issues of Turkey, 1865-1887*, by Max Plantinga
- Persia: The Classic Period to 1879*, by Joseph Hackney
- The Postal History of the Lesser Sunda Islands, Moluccas, and New Guinea During the Japanese Occupation and Immediate Aftermath 1942-1946*, by J.R. van Nieuwkerk



- Stamps of China 2001* (an album with stamps of the PRC published by the National Post Corp.)
- Stamps of China 2003* (an album with stamps of the PRC published by the National Post Corp.)

EUROPE

- The Art and Archives Auction of the Gibraltar Philatelic Bureau Ltd. 2009*, University Philatelic Auctions (auction catalog)
- Cérès 1849: La Première Emission de France et Ses Usages Postaux*, by Joseph Hackney
- Skandinavian Frimaerkekatalog* (1992-1993)

NORTH AMERICA

- Cuentas del Establecimiento Nacional de Corres y Postas 1856-1861* (Mexico)

SOUTH AMERICA

- A Dream of Eagles*, by Ralph A. O'Neill (about the NYRBA airline)
- Peru Cancellation Handbook 1858-1873*, by Erik A. Emsing
- South America Collection of Stamps and Covers 2010*, Cherrystone Auctions (auction catalogue)

TOPICAL

- Basketball*, by Takashi Kurosaki (an exhibit, mostly in Japanese)

NON-PHILATELIC (Railroads)

- Rio Grand Traskside with Jim Ozment*, by Jim Sandrin (Western History Collection)

WHAT'S NEW ON THE SHELVES?

NON-PHILATELIC

Maps of Indiana Counties in 1876 Together with a Plat of Indianapolis and a Sampling of Illustrations, published by the Indiana Historical Society (reprint edition)

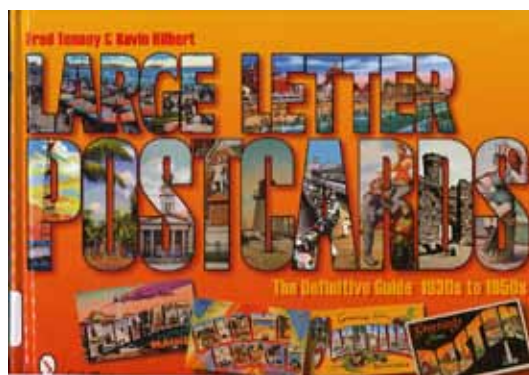
National Geographic Atlas of the Fifty United States (1960), published by the National Geographic Society

MISCELLANEOUS

Catalogue Lemaire, 1840-1900: Prix-Courant de Timbres-Poste, Timbres de Service, Timbres-Taxe, & Timbres-Télégraphe, published by Th. Lemaire, 1909 (worldwide catalogue)

Index of Authors: First Through Thirty-Fifth American Philatelic Congress Books 1935-1969, published by the American Philatelic Congress

Index to Congress Books No. 1-No. 72 (1935-2006), published by the American Philatelic Congress



Large Letter Postcards: The Definitive Guide, 1830s to 1950s, by Fred Tenney and Kevin Hilbert

BOOK REVIEW

The Postal History of the Lesser Sunda Islands, Moluccas, and New Guinea during the Japanese Occupation and Immediate Aftermath 1942-1946

by J.R. van Nieuwerkerk
Publisher by the Dai Nippon Society
Reviewed by William Crabbs

The islands in the title are part of Indonesia. They are located in the southwest Pacific Ocean, north and northwest of Australia and between Australia and Borneo. Although they have been under the control of Spain, Portugal, and Great Britain at various times, in 1941, at the time of the Japanese attack on Pearl Harbor, they were under Dutch administration. Following that attack, Japan rapidly expanded its sphere of influence in the south Pacific until they were stopped on May 8, 1942 at the Battle of the Coral Sea.

As part of their offensive, in 1942 Japan conquered and occupied the Lesser Sunda Islands, the Moluccas, and New Guinea. This book concerns itself with the changes made to the monetary and Postal systems by the Japanese during their occupation of these islands. It is divided into three parts. The lack of clear divisions between these sections, and even between the chapters, is a minor irritation which could have been avoided.

The first section, Chapters one and two, provides background information that helps the reader better understand and use the book. The author advises anyone not familiar with the Japanese occupation to read these chapters.



Chapter one provides general background information on history, maps, languages, calendars, and currencies. The author tells the reader that "... while there are more than a thousand spoken languages in the Indonesian archipelago ... only three [are needed] to understand the philately of the Japanese occupation ... Malay, Dutch, and Japanese". To the postal historian, Dutch is particularly significant because, although its use was prohibited during the war, the Japanese continued to use many of the postal forms which were printed in Dutch and Malay before the war. The discussion of calendars is useful since there were three major and several minor calendars in use during the occupation.

Chapter two gives a description of pre-war postal organization including the stamps and postal stationery. This is important because, during the occupation, the Dutch postal system was used by the Japanese but was subject to army and navy rules. All correspondence was censored and had to be written in Malay or Japanese.

Continued next page

BOOK REVIEW

Continued from page 9

More post cards than letters were used during this period partly because they could be dropped in any letter box and be censored when they arrived at the post office. Letters had to be taken to the post office for the censor's review. Unusually, postal money orders provide much of the philatelic information from the occupation because normal correspondence was often discarded.

The second section, Chapters 3-17, discusses the philately of the occupied regions and islands, starting with Bali and ending with East New Guinea. The author excluded military field post from this book, deciding instead "... to leave this aspect for a future publication."

Each of these 15 chapters begins with a discussion of the pre-war history and postal system, and of the beginning of the occupation. The author then goes on to describe implementation of the new postal system to be used by the occupation forces. The balance of the chapter gives extensive detail about the stamps (both overprints and Japanese issues), postal stationery, cancellations, and postal history, and a description of known forgeries. The chapters conclude with a summary of the postal services during the capitulation and early post-occupation period.

The third section, in the author's words, summarizes ten supporting "... studies that have been done in the course of writing this book." Most deal with detailed descriptions of various overprints but the final study

presents an extensive correspondence related to the types of stamps used during the occupation.

The book is full of material for anyone studying Japanese occupation philately. From overprints on postage stamps to postal money orders, each topic is explained very thoroughly. There are many illustrations showing covers, stamps, overprints, maps, and period photographs, the great majority in color. There are tables throughout the book, including rate tables, but there is no comprehensive list of these tables which makes information difficult to locate. There is also no general index for the book making it hard to find discussions of specific subjects.

This beautifully done book provides a comprehensive study of the postal history of this part of Indonesia during and immediately following its occupation by the Japanese, from 1942 to the end of WWII. Much information is laid before the reader but as the author indicates "those persons not familiar with the philately of the Japanese occupation to familiarize themselves by thoroughly reading the first two chapters".

The book offers a door into a field of philately I had not previously considered. I do collect aerophilately and ephemera related to KLM flights between Holland and what was the Netherlands Indies, but most of that history was before the Japanese occupation discussed here. Collecting Japanese occupation philately will be left for others with deeper pockets.

The Topic is CartoPhilately. A Carto -what?



If you have trouble folding a road map maybe this is not for you. But a number of RMPL members collect maps and many of them also collect CartoPhilately, or "maps on stamps".

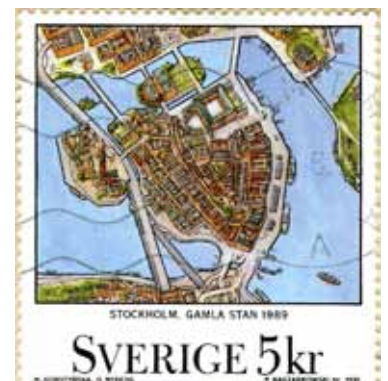
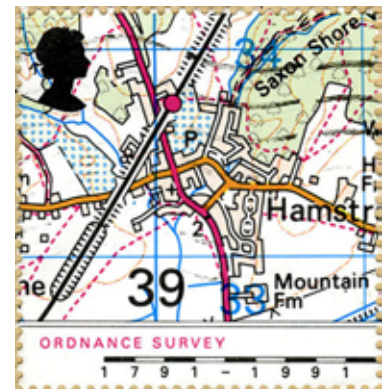
An important element of collecting maps on stamps is acquiring a good checklist such as the one published by the CartoPhilatelic Society. The Society has been in existence for 54 years and has published a comprehensive checklist for many years, organized worldwide by country. At the last revision the digital file contained over 35,000 entries provided on a CD disk. If printed as hard copy it would contain over 785 single sided pages!

Four categories are used to identify

stamps in the checklist. The categories are:

A - an identifiable map as the main feature of the stamp; **AR**- reproduction of old and historic maps; **O** - all other maps; and **OC** - stamps showing map making equipment.

If you have an interest in maps, contact Ronald Hill at the library and we could plan to hold an informal meeting. To learn more about the CartoPhilatelic Society, check their web page at www.mapsonstamps.com.



A Greener RMPL

No, we suddenly haven't become Irish; nor have the buildings been painted green. But, with spring upon us, the *Green Thumb Group* at the RMPL has suddenly become active and is plowing ahead with their verdant aspirations in the open lot of our recently acquired property. The volunteers who show up on Thursday, have thus far put in a cumulative total of more than 36 hours digging trenches, planting plants and shrubs and trees for installation of the stone borders, and probably have many hours of work before completing the gardens. Tonny van Loij has begun moving the stones into place (and by the time you read this, they should be completed).

With that border wall in place, the dynamic quartet of master gardener van Loij (formerly with the Denver Botanical Gardens and a specialist on Europa and a former stamp dealer) and Dasa Metzler (expert on cactuses, Boa Boa Trees, Embroidered Postcards, Jewish history, and topical stamps), Carol Mobley (post card dealer and collector of antique coffee pots) and Pamela Lugo (religious postcards) and other volunteers have thus far devoted many hours to the planning and development of the gardens. The ladies have begun donning their sunbonnets and gloves and are gearing up to contribute their efforts on Thursdays and Saturdays as their schedules permit. Further, Tonny has contributed much from out of pocket towards the purchase of trees and shrubs for the eastern border of the gardens.

And that's where all of you can help the *Green Thumb Group's* ongoing efforts. The RMPL Board has appropriated \$500 for major purchases deemed necessary for the gardens. That essentially represents seed money. Should any of you wish to make a donation of plants, Tonny and the ladies will gladly accept the donation and will see to the planting as their time permits.

top left Tom Pollard
left Jim Moorman



right:
Dasa Metzler

below:
Tonny van Loij



Some Immediate Needs*

FOR APRIL AND EARLY MAY

- (4) 3 ft. tall Emerald Green Arbovitae
- (3) 5ft Junipers
- (2) 6ft Pine
- (2) Forsythia plants
- (6) Flats of pansies or 6 packs
4 " pot of Yarrow
- Ornamental grasses: 2 to 3 ft tall
- 6 bags of compost & manure
- 15 bags of garden soil (not potting soil)
- Money to Purchase Arbor Day Trees

AFTER MOTHER'S DAY

Geraniums and Petunias

*Talk with Tonny first before donating or purchasing (303-752-0189) to avoid any duplication.

And if you'd like to help out with the physical work, also let Tonny know. Your labor will be appreciated - whether it is sifting soil, moving wheel barrows, digging holes or working on walkways.

This is an ongoing project as the gardens progress and move northward from Pontiac St. toward the Asbury St. side of the building. And, there's always next season and many more.

Sergio

**ALSO
NEEDED:
Iron Garden
Furniture &
Benches
(any condition)**

**300 Wall Paver
Blocks**

**8-10 Truckloads of
Clean Fill Dirt**

RMSS Silent Auction Features US No. 1 (XF) On Cover

This year's RMPL Silent Auction at the Rocky Mountain Stamp Show is shaping up as one of the best ever. As usual, we have a very nice selection of over 200 lots of United States material out of a total of 620 lots. The featured item is a beautiful US No.1 on cover with a Philatelic Foundation certificate and graded 90 (XF) by PSE.

Republic. In the latter two cases, we have ten large lots of material, each with a catalog value from \$150 to \$600 that will start at just 10% of catalog.

We also have some of the better material from the Bob Brown estate that was not included in the recent bulk lots auction including a nice U.N.#38 souvenir sheet along with additional German material from the Gene McGurer bequest.



As most members are aware, over the past several years the RMPL has received a number of large donations that are held in reserve for three years according to IRS regulations. The first of these collections, from the Frederick Mayer estate, becomes available this year. A number of lots consist of material from this donation. These include some very nice mint Canada, early Denmark, Portugal, Costa Rica and Dominican

Our objective is to sell all 620 lots to raise as much money as possible for the library. In this regard we have set minimum bids as low as is reasonable. Most U.S. lots are priced at 35% of catalogue or lower while most foreign lots are priced at 25% or lower.

The illustrated catalog (shown above) is available now. A copy is enclosed with *Scribblings* and all lots and the catalog can be viewed at the library.

Dave Weisberg, Auction Manager

SILENT AUCTION CATALOG and MAIL BIDDING FORM
Enclosed with this Newsletter

Visit The RMPL Web Page & Online Catalog
www.rmpldenver.com

DONATIONS

The library thrives on the enthusiasm and generosity of its members. The following members have made donations to the library over the past two months. We thank each and every one who has contributed.

Barbara Anderson	Eric Lederer
Steve Bahnsen	Longmont Stampers
Don Beuthel*	Gary McIntyre
Tom Breay	Dasa Metzler
Dave Capra	Ron Mitchell
Cherrellyn Stamp Club	Kent Nelson
Wesley Chowen	Tom Paradis
Joanne Curran	Scandinavian
Kimberly Divin	Collectors Club
Alice Elliott	Bill Schattle
Keaton Forrest**	Gary Starkey
Heidi Hansen	Dalene Thomas
Ronald Hill	UPSS Publications
George Killian	Mrs. Vern Youngman
Charles Klein	Alan Warren
Joe Lambert	Julia Whitney
	Martin Wilkinson

* in memory of Vi Weinman

** in memory of Bob Brown and Jim Ozment

NEW MEMBERS

We extend a warm welcome to those who have joined the library in the past two months.

Chuck Mallick – Golden, CO
Collects Thailand and Rail Postal History

Carol Reddy – Denver, CO

Michael Reddy – Denver, CO

Edward May – Loveland CO

CARPET SQUARE DONATIONS



Purchasing one-square foot of new carpet for the RMPL building renovation is a popular and easy fund raising opportunity. Carpet Squares is an ongoing program to raise additional funds for the library. On the front table of the library is a large chart where you can enter your name when you purchase individual carpet squares for only \$25 each.

The following have purchased carpet squares:

Bob & Carol Blatherwick	Robley Rhine Estate
John & Anita Bloor	Ronald Hill &
John & Sara Broberg	Judith Wright
Richard Byne	Gene Holgate
Michael Carr	Latin America
Roger & Norma Cichorz	Study Group
Charles Cline	Frank Leitz
Tom Crawford	Sergio & Pam Lugo
Don Dhonau	Steve Pacetti
Sue Dunn	Phil Purcell
Jerry Eggleston	Roger & Marty Rydberg
Greg & Anna Frantz	Dick Seeley
Gary & Holly Gibson	George Snyder
Latin America	Blaine & Dalene Thomas
Study Group	Civia & Paul Tuteur
Marc Gonzales	Tonny van Loij

OTHER SHOWS & EVENTS

20th ANNUAL FT. HAYS STAMP & COIN SHOW

by the Ft. Hays, Kansas Stamp Club;

Sunday, April 25, 2010 9 am to 4 pm at the Ramada Hays Hotel,
3603 Vine St., Hays, Kansas. Free Admission. Info.: 785-625-3066

DENVER POSTCARD & PAPER SHOW

Friday, April 30, noon - 8 pm and Saturday, May 1, 9 am to 5 pm at
the Jefferson County Fairgrounds - 15200 W. 6th Ave., Golden, CO.

Admission: \$4.00.

Info.: Dede Horan, DenverPostcardShow@comcast.net



SECOND SATURDAY PROGRAMS AT THE LIBRARY

Second Saturday programs are sponsored by the library and attract a friendly group of folks who are interested in a specific subject or who are interested in learning more about an area of philately that may be new to them. Contact Jim Kilbane if you would like to present a program.
e-mail: aurora_80017@yahoo.com

**The programs begin at 9:00 AM and are over by 10:00 AM.
Doughnuts and coffee are complimentary and all are welcome.**

MAY 8, 9:00 AM

*The Silk Embroidered French Post
Cards of World War 1*
by Dasa Metzler

Thousands of post cards were embroidered by French peasants during World War 1 and sold to British soldiers to send home to family and loved ones. A slide show of this fascinating material and their many designs will be presented by Dasa. Posted during the war years, 1914-1919, the cards also bear the markings of the British censors.

JUNE 12, 9:00 AM

The Trinidad "Lady McCleod"
by Gregory Frantz



Greg will discuss the history and research of Trinidad's "Lady McCleod" stamp, the first stamp issued in a British colony. Specifically, details of the stamp's design, engraving and production will be presented.



61st ANNUAL NATIONAL TOPICAL STAMP SHOW Denver - June 25-26-27, 2010

**Friday, Saturday
10:00 AM - 6:00 PM
Sunday 10:00 AM-4:00 PM**



**Crowne Plaza, DIA
I-70 & Chambers Road**

Pony Express souvenir cancel

www.americantopicalassn.org - phone: 618-985-5100

ROCKY MOUNTAIN STAMP SHOW

Crowne Plaza Hotel, DIA, I-70 & Chambers Road - May 14-15-16, 2010

MORE THAN 40 DEALERS

**SATURDAY
AWARDS BANQUET**



324 EXHIBIT FRAMES

**SUNDAY
MEMORIAL BREAKFAST**

www.rockymountainstampshow.com
for complete information

YOUTH PROGRAMS

BACK AGAIN

Popular three-day program for kids includes workshops and organized group activities. Individual conferences will be held with scouts working on Merit Badges and families considering homeschooling with stamps.

WHAT'S IN YOUR ATTIC

BACK AGAIN

Our group of experts will review old collections large and small. If you found or inherited a family collection, bring it in and we will offer recommendations or advice. See RMSS web page for complete details.

Invited Societies Attending

Women Exhibitors (WE)

Organized in 2007, Women Exhibitors was founded to provide a vehicle through which women exhibitors can encourage each other through sharing information, ideas, experience, advice, problems, and solutions. The group does so through seminars, its quarterly online newsletter *WE think* and through one-on-one mentoring of exhibitors.

Rossica Society of Russian Philately

The Rossica Society is a world-wide society devoted to all aspects of Russian philately, from pre-stamp days of Imperial Russia to post-Soviet philately. The purpose of the Society is to unite all philatelist throughout the world with an interest in Russian philately and provide them a means of broadening their philatelic knowledge.

Visiting Exhibiting Groups

Bittersweet Exhibitors

Midnight Mavericks

St Louis Bears

Local Organizations

Colorado Postal History Society

USS Colorado Chapter - USCS

Postmark Collectors Club - Colorado Chapter

Scandinavian Collectors Club - Colorado Chapter

TOPIC - Topical Philatelists In Colorado





What's Happening at the RMPL...

"Come and Enjoy the Activities"

Monday, Tuesday, Wednesday, Friday, Saturday 10:00 AM - 4:00 PM
 Thursday 2:00 - 8:00 PM. Closed Sundays and Holidays. Phone: 303.759.9921

Meeting times and places sometime change. It is best to call the library or the club to confirm the place and time. A calendar of reserved club times is kept by Operations Manager, Don Beuthel, at the library. Clubs should check the calendar regularly and notify Don (303-755-9328) of any changes or updates. All requests to reserve meeting time and space other than those listed here must be approved and scheduled by Don well in advance.

MAY 2010

- May 5** - Meeting-Aurora Stamp Club.
6:30 PM trading, 7:30 PM meeting/program
- May 8** - 9:00 AM
Second Saturday at the RMPL
Program by Dasa Metzler
Embroidered French Post Cards of WWI
- May 8** - Meeting - 10:00 AM
Mexico/Latin America Study Group
- May 12** - Meeting - 7:00 PM
Denver Germany Stamp Club
- May 13** - Meeting - 6:30 PM
Denver Post Card Club
- May 14** - Women Exhibitors tour of the RMPL
- May 15** - Meeting at RMSS show
TOPIC - Topical Collectors in Colorado
- May 15** - Meeting at RMSS show
Universal Ship Cancellation Society
U.S.S. Colorado Chapter
- May 15** - Meeting at RMSS show
Scandinavian Collectors Club
- May 15** - Meeting at RMSS show
Metro Denver Young Stamp Collectors Club
- May 20** - **RMPL Board Meeting 7:00 PM -**
All members invited
- May 23** - Meeting - 2:00 PM
Great Britain & Commonwealth Collectors
- May 26** - Meeting 7:30 PM Israel Stamp Club
- May 29-30-31** - **CLOSED** - Memorial Day

JUNE 2010

- June 2** - Meeting - Aurora Stamp Club
6:30 PM Trading; 7:30 PM meeting/program
- June 5** - Meeting 10:00 AM
Scandinavian Collectors Club
- June 9** - Meeting - 7:00 PM
Denver Germany Stamp Club
- June 10** - Meeting - 6:30 PM
Denver Post Card Club
- June 12** - 9:00 AM
Second Saturday at the RMPL
Program by Gregory Frantz
Trinidad's "Lady McLeod" stamps
- June 12** - Meeting 10:00 AM
Mexico/Latin America Study Group
- June 12** - Meeting 11:30 AM
Rocky Mountain Aerophilatelists
- June 19** - Meeting - 9:30 AM
Metro Denver Young Stamp Collectors Club
- June 20** - Meeting - 2:00 PM
Great Britain & Commonwealth Collectors
- June 22** - Meeting - 7:30 PM
Rocky Mountain Stamp Show Committee
- June 23** - Meeting - 7:30 PM
Israel Stamp Club
- June 25** - ATA Reception at RMPL
- June 26** - Book and Stamp Supplies Sale at RMPL

Scribblings is published bimonthly by the Rocky Mountain Philatelic Library, Editor, Ronald Hill, 2038 S Pontiac Way, Denver, CO 80224. The Rocky Mountain Philatelic Library is a chartered Colorado nonprofit corporation and an IRS designated 501 (c)3 charitable organization. Membership subscriptions over that for the regular membership, and donations of appropriate philatelic materials, are deductible for U.S. income tax purposes.

RMPL BOARD OF DIRECTORS

President: Sergio Lugo - Operations Manager: Don Beuthel - Vice-President: Jim Kilbane
 Corresponding Secretary: Don Dhonau - Recording Secretary: Paul Lee - Treasurer: Bob Blatherwick
 Directors: Jan Marie Belle - Roger Cichorz - Dalene Thomas - David Weisberg. Emeritus: John H. Willard