

# Scribblings

...from the Rocky Mountain Philatelic Library



Ellengail Beuthel, Librarian...

Vol. 18 - No. 1  
www.rmpldenver.org

2038 South Pontiac Way, Denver, CO 80224  
303.759.9921

January-February 2010  
Email - rmpl@qwestoffice.net

## IN THIS ISSUE

Our Recent Losses .....1, 2  
Purchase is Complete.....1  
The Prez' Observations ....2  
State of the Library .....3-5



What's New on the Shelves.....8  
Book Review.....9  
New Members .....10  
Donations .....11  
Making Textured Paper ..12  
Galapagos Delivery .....13  
Meetings and Shows.13,15



Stamp Collecting Promotes Health Care.....14



Second Saturday Programs.....15  
What's Happening Calendar....Back Cover

## Our Recent Losses Jim Ozment and Bill Bauer

Two of our founding members died within a week of each other in early December. This photo was taken in Park County in May, 2009, shortly after the ROMPEX show, when they drove up the old railroad right-of-way to the Leavick Mine near Fairplay.

Bill Bauer died on December 2 at his home in Unadilla, New York; Jim Ozment died on December 6, at his home in Golden, Colorado. Both were close friends most of their lives. The two were co-authors, along with Jack Willard, of the book, *Colorado Post Offices, 1859-1989*. Bill recently completed the *Colorado Postal Encyclopedia*, a detailed postal history of every county in Colorado.

More on page 2



## The Purchase is Complete; Expansion and Planning are Underway



On December 4, 2009 the Rocky Mountain Philatelic Library completed the purchase of a second building directly adjacent to the existing library. This purchase effectively doubles the library's space to more than 6,500 square feet as well as more than doubling the parking area and increases the size of the combined property to about two-thirds of an acre. In the sixteen years since its founding, the Rocky Mountain Philatelic Library has expanded a number of times. In August 1993, the library opened in a small shopping center store front. Its next major move was in purchasing the existing building in May, 1996, opening to the public three months later. The mortgage for that building was paid in full in 2003. Everyone associated with the library is looking forward to the benefits of this expansion and the improvements that will now be possible with the additional space.



### My Personal Best Wishes To All for a Happy and Prosperous New Year

I would like to just take a moment here to convey my profound appreciation for the generosity all of you have displayed in the past year. I am not talking simply of the donations made for the building fund, but the spirit of "generosity" of many of you in helping out as volunteers, in your forbearance with operations at the library, in the kindness and good will you have displayed towards the board and the officers and committees, and finally in the good will you displayed towards visitors and patrons of the library. Thank you!

*Sergio Lugo*

---

## Closed Albums

---

This past year ended on a sad note. Three of our founding members passed away during a six-week period near the end of the year. Jim Ozment was RMPL member #9; Robley Rhine was member #19 and Bill Bauer was member #25. They will be missed greatly by friends and associates throughout the philatelic community.

### Jim Ozment (1935-2009)

Jim, or as known by many simply as "Oz", died December 6, 2009. He was an original founder, member #9, of the Rocky Mountain Philatelic Library. But long before that Jim worked on the railroad starting in the 1950's during summer break from college and continued until he retired in the 1990's. His love of trains and railroad history led him to the Colorado Railroad Museum where he was a longtime member and volunteer. Jim also was a member of the Collectors Club of Denver, the West Side Stamp Club, the Rocky Mountain Stamp Show, the Mobile Post Office Society, and the Denver Posse of Westerners. He co-authored, with Bill Bauer and Jack Willard, the book *Colorado Post Offices, 1859-1989*. He was also an active member of the Colorado Postal History Society as well as a frequent visitor and volunteer at the RMPL library. A close friend of Bill Bauer for many years, the two friends travelled literally over thousands of miles of Colorado back roads and trails and knew the location and stories of every post office in the state.

### Bill Bauer (1934-2009)

Bill Bauer died December 2 at his home in Unadilla, New York. Bill recently completed the *Colorado Postal Encyclopedia*, a detailed postal history of every county in Colorado. Over a 12-year period he made at least two visits to Colorado per year, visiting and documenting the 2,550 or so post office sites, sometimes alone, but most often with friend Jim Ozment. He was founding member #25 of the Rocky Mountain Philatelic Library. Bauer was also a Fellow of the Royal Philatelic Society of London, a member of the Collectors Club of New York, the Collectors Club of Chicago, and the Collectors Club of Denver. He was secretary and second vice president for the United Postal Stationery Society. In addition, he was a member of numerous organizations, including the Unadilla Historical Association, the Rotary Club of Unadilla and at least 20 other philatelic societies. He served on the APS Hall of Fame Committee and in 1985 he received the Society's Century Award for recruiting at least 100 new members. In 1987 he received the Luff Award, the highest honor given by the APS to living collectors. He will be missed by many around the world, but here in Colorado, his work and legacy will continue as a permanent monument to his love of Colorado.

### Robley Rhine, PhD

Dr. Robley Rhine of Boulder, Colorado died on October 26. Robley was RMPL member #19, a friend of the library from its very inception. Reared in Kansas, Robley earned a Ph.D in Speech, and served as a professor at the University of Colorado (Denver campus) for many years. Preceded in death by his wife Peggy, the couple did not have any children. Robley was associated with numerous local and national philatelic organizations, including the International Society for Japanese Philately, the War Cover Club and its successor, the Military Postal History Society, the Universal Ship Cancellation Society, and the Boulder Stamp Club. Robley had strong and passionate collecting interests - with heavy emphasis on China and Japan, US naval ship covers, and U.S. military material of World War II. One of his recent philatelic activities was his exhibit at the 2007 ROMPEX Show of Yangtse River naval activities and the 1937 Japanese sinking of the gunboat USS PANAY.

## ANNUAL STATE OF THE LIBRARY - Sergio Lugo, President

The RMPL has always faced uncertainties, however the future is filled with a lot of promise especially with the work and accomplishments of the membership over the past 16 years and, in particular, the hard work and accomplishments of the past year.

Continued emphasis on the fun of philately as well as providing a welcoming atmosphere has led to membership growth to 492 members (approaching the 500 member mark), with over 2,400 visits logged in (not including those of you who didn't sign in) to the RMPL by members, visitors, well wishers and friends. The volunteer Grant Committee developed the library's first grant proposal (a useful learning experience for the second proposal being developed now for delivery in February), and securing the library's first outright grant (from the King Foundation - with funds focused on youth activities). Volunteer committees carried the work this past year in investigating, exploring, negotiating and finalizing the acquisition of the 2048 S. Pontiac Way property. Acquiring this property had been hoped for by many of us over the years, but which materialized and was finalized this past year much quicker than any of us expected.

Other workgroups launched our on-line catalog and book lending procedures now available to all members both in Colorado or far removed from our majestic mountains. Others explored policy formulation on such matters as insurance and book acquisitions, as well as the electrical rewiring of the building bringing us up to code for the first time.

We have worked in collaboration with the APS to develop a union catalog of philatelic publications. Our second book publication, temporarily put on hold until we complete other priorities, will be back on the agenda soon.

Finally, the generosity of hundreds of members resulted in over \$57,000 received already from pledges and donations this year alone for acquisition of



the 2048 S. Pontiac Way building. For comparison, David Weisberg and I only anticipated that the Library would raise roughly \$30,000 when the fund drive began in late August. The amounts committed and pledged for the current year and over the next four years is over three times that figure. With the acquisition of the new building, the RMPL will be operating on an annual budget of roughly \$90,000 per year - without a single paid employee and reflecting a remarkable growth from the days that we didn't have two nickels to rub together.

On a sad note, we have had several deaths of members and volunteers and to them we extend a fond farewell and our gratitude for having known them and

having shared their love of philately with us over these many years.

Having recapped these accomplishments involving thousands of hours in but a few short words, let us now focus on the vital agenda for the upcoming year that many of you can anticipate and which we hope you will be able to assist with your time and labor.

**YOUTH ACTIVITIES:** Don Dhonau needs volunteers to work with him in expanding the youth program of the Library, which will mainly consist of visiting schools and mentoring students (both individually or in groups) on the subject of stamps and philately. The King Foundation grant now makes possible a significant growth in those activities, with your help, and others willing to step forward to promote the hobby to the younger generations.



**LIBRARY VOLUNTEERS:** As we move to fully use the 2048 S. Pontiac Way property, we will need more help in volunteer staffing of the library. We are already at a critical juncture with staffing the front desk; your consideration of working at the library in three hour shifts on a regular basis would be most appreciated. In addition, volunteers to work with the auction catalogs, the archives of the Colorado stamp clubs, the Special Collections archives, and the periodicals of the library are needed and will be greatly appreciated. And, attention gardeners; we will need more volunteers to work on the new gardens planned for the vacant land next to the 2048 building - hopefully some of you "green thumbs" will jump in and turn the library into a veritable "Philatelic Garden of Eden."

**REMODELING 2048 S. PONTIAC WAY:** Every Thursday and Saturday mornings (9 to noon) are being reserved for work activities associated with the new property - everything from "moving stuff" to reshelving, to remodeling including drywall installation and painting. All of these will take months - so do not hesitate, we'll have work for you when you show up.

**WRITERS and PRESENTERS:** Our *Scribblings* newsletter and Second Saturday Programs have proven to be notable successes and hallmarks of the RMPL. Originally started by Don Beuthel, *Scribblings* has been upgraded and improved over the years by Ron Mitchell, Jim Kilbane and Ron Hill. Won't you help maintain this high level of excellence by

*Continued on page 4*

## December 4, 2009; Closing of the Real Estate Transaction

All Documents Completed and Signed (see opposite page)



### State of the Library *Continued from page 3*

continuing to write and develop articles for *Scribblings* (contact Ron Hill) and to present in depth presentations for the Second Saturday Programs (contact Jim Kilbane) .



*Modern technology and graphics are used to produce Scribblings in-house.*

Other than these more mundane activities, a slew of other developments can be seen on the horizon of the new year. First is the magic goal of arriving at, and surpassing, the 500 member level. Won't you help by recruiting friends and associates from throughout Colorado, the nation and beyond? Note, in this issue we list two new members from overseas, Great Britain and Australia. Further, you can expect a new and revised website for the RMPL. Travis Searls has been working on it for months, and hopes to have it installed by the end of January. As noted earlier, we're hoping that the library's second publication can be re-activated and available for publication and distribution

by mid-summer. Also, in May the Rocky Mountain Stamp Show auction will be held - with an even more valuable and diverse set of auction lots available for your consideration (including extensive Costa Rica and Canada material). We are also tentatively planning a sale of set-price philatelic supplies in June (from a large quantity of supplies donated by the late Frederick Mayer). This is planned to be held in association with the American Topical Association show to be held in Denver. These will be followed in early November by our popular Annual Bulk Lot auction.

Fund raising remains a high priority for the library and the board as we attempt to reduce the \$237,500 mortgage associated with the new building. However, other pressing priorities must also be met which could slow down liquidating the mortgage as quickly as we would like - such things, as paving the parking lot, painting the building, and replacing the roof on the 2038 S. Pontiac Way building. The Fund Raising Committee will be working hard throughout the year to meet these pressing needs. And then, hopefully the board will consider the idea of a "Grand Opening" of the new addition to the library over the summer - at which all of you will be invited.

In closing, I'd like to make a request of all members. A special Master Planning Committee was established at the November 2009 RMPL Board meeting to look into the future uses of both buildings on South Pontiac Way. That committee will be formulating plans and outlining steps to plan use of the two buildings simultaneously to make the library a thoroughly useful and enjoyable venue for the hobby as well as for all of our members. Won't you help at this time, by providing your suggestions and thoughts to the committee as they explore, develop and finalize their options?

Here is your chance to have a significant impact on the future direction of the RMPL!

## Sergio's "Cliff Notes" on the Purchase of 2048 S. Pontiac Way And Honoring the Many Good People Who Made This Possible

Or, "On the Job Training for Libraries Seeking to Expand"

Instead of a long narrative account of the many decisions and events leading to the purchase of the 2048 S. Pontiac Way property the following provides the highlights of the process in – you know – the Cliff Note style (or whatever you called them in school).

- ☒ Establish a building fund (2004) following payoff of old mortgage.
- ☒ Anticipate possible sale of adjacent property as a public nuisance.
- ☒ Form study committee (Oct 2008) to explore library expansion needs. **Make sure good people are on the committee**
- ☒ Present recommendations to Board (Nov 2008) for action in the expected far future.
- ☒ Discover a business card on the President's desk (July 28, 2009) indicating adjacent property owner's intention to sell.
- ☒ Investigate seriousness of offer and deadlines; \$390,000, closing by December 2009,
- ☒ Decide on a general meeting of the Board and membership to determine support from membership (August 8, 2009)
- ☒ Reschedule by one week because of concern regarding short time notice. Invite seller (August 15, 2009).
- ☒ Hold general meeting to establish deadlines, hear opinions, views and opposing views from membership and board members. **Establish committees and find good people.** Firm up deadlines.
- ☒ Send out survey material to determine membership support and potential financial aid (August 16, 2009).
- ☒ Ask seller to extend listing deadline to August 30; advise seller of committees investigating property, and only the Negotiating Committee to speak on behalf of RMPL.
- ☒ Follow-up membership orientation meeting to hear questions and any opposing points of view (August 26th )
- ☒ Report from mail survey that more than 241 members (majority) are in support (August 26, 2009).
- ☒ Negotiating Committee instructed to make an offer within certain limits established by board. (August 26, 2009).
- ☒ Continue fund raising; select appraisal firm and schedule appraisal and inspections after acceptance of offer. Wait and wait to hear from seller.
- ☒ Accept special memorial donations on behalf of members who died shortly after previous meeting, or who wanted to have their donation on record (Sept 17)
- ☒ Meet to discuss and finalize decision (September 17) based on counteroffer. Prepared projected outlays and five-year library budget. Negotiating Committee authorized to continue to negotiate

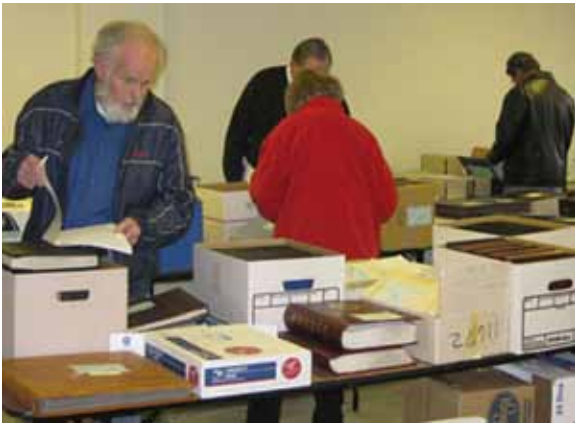
according to earlier board directives and without additional board action except final approval. \$42,500 in pledges had been received by September 17, 2009.

- ☒ Fund Raising Committee initiates fund raising drive (Sept 18) **with good people on the committee.**
- ☒ Real estate attorney engaged to review contract and to discuss financial liability of officers and board members.
- ☒ Board (Oct 5) explores various alternatives and identifies possible cutbacks in expenses over a five-year period, should there be a shortfall or deficit during this period.
- ☒ The final counteroffer by RMPL resulted in the seller offering more favorable terms.



- ☒ Contract offer is accepted – October 9, 2009.
- ☒ Letters sent to individuals having made pledges informing them of status and soliciting their donations (eventually \$57,000 received; exceeding pledge commitments by \$10,000)
- ☒ Appraisal, building inspection, and sewage inspection completed – November 2009.
- ☒ RMPL Board appoints Master Planning Committee, on which **a few good people serve.**
- ☒ Letter soliciting donations from uncommitted members; additional \$4,000 raised; (November 20, 2009)
- ☒ Contract finalized – walk through conducted (December 1)
- ☒ December 4, 2009, 2:00pm. Sale is completed (\$297,500) and mortgage loan signed for 20 years (\$237,500).
- ☒ Volunteer party - December 4th at White Fence Farm. Various awards given. Meeting rooms in both buildings named on behalf of founding members.
- ☒ Work parties begin – December 10, 2009

Bottom line:  
**Many good people made it all possible! Thank you.**



## Auction Draws Large Crowd; Raises Record Funds

The annual Large Lot Auction held on November 14, raised a new record amount for the library. Proceeds from this year's auction brought in \$11,000, an increase of \$3,500 over last year's proceeds. There was very good attendance and enthusiastic bidding at the auction. The auction was held in the meeting hall of the new building where all of the auction lots had been on display the previous week. The owner of the building generously allowed us to use the building a few weeks before our final purchase was completed.



---

## Volunteer Appreciation Dinner/Party



*Jim Ozment, RMPL founding member #9, holding the sign for the Special Collections Room named in his honor.*

The annual Volunteer Appreciation Dinner again was held at the White Fence Farm in Lakewood, Colorado. This year dozens of awards went to volunteers and committee workers in recognition of their unselfish contribution to the success of the library. Board member, Dalene Thomas, again handled all arrangements for the event which included a fine meal and spectacular decorations. She, along with Vice President



*Board member Dalene Thomas and President Sergio Lugo state their appreciation with the distribution of awards to the many volunteers present.*

Jim Kilbane and President Sergio Lugo, distributed awards to the many volunteers and their guests. Another event was the announcement that a number of the meeting rooms at the library would now be named in honor of certain of our founding members. Jim Ozment also gave a touching eulogy for his long time friend and fellow RMPL founding member, Bill Bauer, who had died just two days previously.

With all members present except Don Beuthel (illness), a variety of topics were discussed and resolved.

The King Foundation's grant of \$2,500 was gratefully acknowledged, with discussion by Youth Activities Director Don Dhonau, on planned activities. The matter of administering the grant funds through an RMPL bank account or through an independent checking account established year's earlier, was explored. The Board asked for a consolidation plan to be worked out to insure that the funds are accounted through the RMPL's normal accounting procedures, yet available to the Youth Program to use as it best determines.

A Library visit was scheduled with the Auraria Library to explore collaborating on digitization activities and opportunities.

Don Dhonau secured 50 chairs and 8 tables for the new meeting room facility at 2048 S. Pontiac Way, in anticipation of the upcoming Bulk Lot auction. Board member Roger Cichorz spent an entire day cleaning and refurbishing the chairs.

With regard to finances, the 12 month CD has come due and its funds have been set aside for the down payment on the 2048 S. Pontiac Way property and associated expenses of the building acquisition as formulated by the Board in October 2009. As of the date of the Board meeting, \$36,400 had been received in pledge amounts.

The Board will explore the possibility of securing a credit card for library payments through a service that approached the Library about this. Although there are pros and cons to the arrangement, at the moment it does not appear that the Board is in favor - pending future investigation and reporting by Treasurer Bob Blatherwick and Board member David Weisberg.

Each committee of the RMPL will be presenting written, annual reports at the January 28, 2010 Board meeting. A new Master Planning Committee was created, to focus on the Library's combined properties (consisting of Don Dhonau, Ellengail Beuthel, Bob Blatherwick and Jim Moorman). In addition, a gardening committee is being organized to plan and propose use of the vacant land. The committee consists of Tonny Van Loij (master gardener at the Denver Botanical Gardens), Mark Holdeman (hydrological and landscaping engineer) and volunteers Pam Lugo, Dasa Metzler and Carol Mobley.

The electrical rewiring is progressing at the RMPL (anticipated to be completed after February 2010), with improved efficiency of connections to the internet already completed. The Board also approved a budget of \$1,500 for the mounting of a ceiling mounted digital projector in

the new meeting room facility.

The Board also agreed to secure the services of the accounting firm of Taylor, Roth and Company to conduct the first formal audit of the RMPL. The audit will cost \$4,000; \$3,100 for the audit itself (with 25 copies of the report) plus \$900 for the preparation of the IRS Form 990 report. (we have previously been paying \$1,800 annually for that report). The audit will be conducted on site during the week of January 10th and the audit findings will be issued in late February.

All arrangements have been finalized for the volunteer party at the White Fence Farm on December



Board member, Don Dhonau, maintaining donation records at the library.

To satisfy requirements of the title company on the purchase of the 2048 property, the following motion was passed "The Board of Directors of the RMPL approves the acquisition of 2048 S. Pontiac Way and the adjacent lot per the terms and conditions that have been presented to the board."

With regard to the By-Laws of the RMPL, notice is hereby given to the membership that Article IV, Section 4, Line 5 of the RMPL By-Laws was amended to include the statement that the RMPL "... may acquire additional property by decision of the Board." Any discussion or concerns about this amendment by RMPL members can be addressed at the next Board meeting (January 28, 2010) Other proposed changes to the By-Laws may also be distributed at that meeting.

Regarding Director's and Officer's insurance coverage, this matter has been a topic of discussion for many months. Action on adoption on this type of insurance was postponed until more information is provided by either our current insurance company or others

The next Board meeting is scheduled for January 28, 2010.

## WHAT'S NEW ON THE SHELVES?

### UNITED STATES

*Arizona Post Offices*, by Alan H. Patera and John S. Gallagher (Western History Collection)

*Delivering Hope: FDR and Stamps of the Great Depression*, by Cheryl R. Ganz and Daniel Piazza, with M.T. Shehan

*Handbook for Intermediate First Day Cover Collectors, Vol. 1*, by Steven M. Ripley (1995)

*Handbook for First Day Cover Collectors*, by Monte Eiserman, 1979 and 1993 editions.

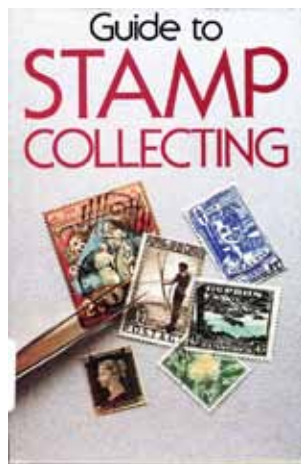
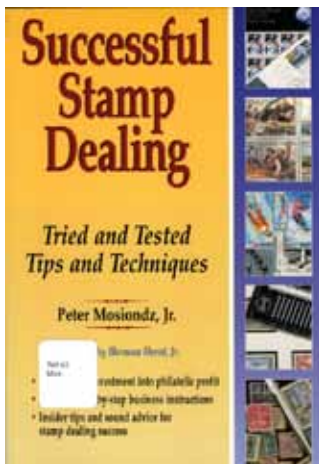
*Official American Map, Zip Code Directory Covering all Fifty States* (1995), Dome Publishing

*United States Bureau of Engraving and Printing: 125 years of Service*

*United States Post Office Manual:*

Chapter 1, Post Office Services (domestic),

Chapter 2, International Mail, 1954



### MISCELLANEOUS

*America Tour: Club de Monte-Carlo.*

Exhibits at the Collectors Club, New York; and the National Postal Museum, 2008

*Know the Game: Stamp Collecting* (an introduction to stamp collecting from Great Britain)

*Pentothal Postcards*, by David C. Lai

*Riverside Webster's II Dictionary* (1996)

*Stamps are Money*, by R.J. Sutton

*Successful Stamp Dealing*, by Peter Mosiondz, Jr.

*Guide to Stamp Collecting*, by Jiri Novacek

### COLORADO

*A Guide to Railway Postal Markings in Colorado*, by John H. Willard

### EUROPE

*Kohl Briefmarken Handbuch und Grosser Katalog* (1915), Volumes 1 & 2, in German

### POSTAL HISTORY

*Allman Posthistoria: Del I, Forntiden Och Medeltiden*, by Paul Gerhard Heurgren

### TOPICAL

*Medicine on Stamps* (small collection of medicine-related stamps on preprinted pages)

### NON-PHILATELIC (Railroads)

*Over Homestake Pass on the Butte Shortline: The Construction Era 1888-1829*, by Bill and Jan Taylor (Western History Collection)

Visit The RMPL Web Page  
And Online Catalog

[www.rmpldenver.com](http://www.rmpldenver.com)

Also, Now Read *Scribblings* Online



## BOOK REVIEW

*Pentathol Postcards*, by David C. Lai. MD.  
Mark Batty Publisher, West New York, NJ, 2005

Reviewed by John Bloor

My father was a physician. In the 1950s and 1960s I remember postcards with exotic stamps coming to him from Abbott Laboratories, a pharmaceutical company based in North Chicago, advertising Pentathol Sodium (aka truth serum), an anesthetic. I liked the cards because of the pictures and stamps (I was just starting in stamp collecting) but, as far as I remember, I only saved the stamps torn from the cards. It was before I knew anything about postal history or advertising mail. After my initial early exposure to these cards, probably 15 or 20 years later, I encountered them again and have since accumulated about 30 of them. (As an aside, there are at least six pharmaceutical companies who have sent out advertising cards from about 1896 until at least the 1960s. They make another interesting collecting area that complements the Abbott cards. For more information see Tom Fortunato's website at: [www.deardoctorpostcards.com/#Members](http://www.deardoctorpostcards.com/#Members)

The book reviewed here is about collecting these Pentathol Postcards or, as they are familiarly known, "Dear Doctor" cards. Although Pentathol is an anesthetic, many of the cards were sent to physicians (e.g. my father) who were not involved in anesthesia. Others went to nurse anesthetists (CRNAs) with the greeting "Dear Nurse Anesthetist". In fact, Lai says "... anesthesiologists and CRNAs accounted for less than 5% of the 200,000 to 300,000 postcards per mailing."

This is the first book published on the subject. A previous review of it by George Griffenhagen can be found at: [www.deardoctorpostcards.com/art2005bookreview.html](http://www.deardoctorpostcards.com/art2005bookreview.html)

In the interests of objectivity, readers should know that I did not read that review prior to writing the current one. In the previous issue of *Scribblings* (Nov-Dec 2009), Roger Cichorz, an RMPL member, wrote an article about these cards which included descriptions. Another good introduction to these cards can be found at: [www.deardoctorpostcards.com/art2003junkmail.html](http://www.deardoctorpostcards.com/art2003junkmail.html)

Upon first opening the book, the endpapers are notable for showing various world outline maps with locations indicated from which cards were mailed. Sixty three locations are marked although it is known that cards were mailed from 91 countries. The book begins with eight pages describing the cards, their history, and

information about the advertising mailings. The end of the book has a short bibliography about the cards and another about Pentathol Sodium. The remaining 176 pages show the fronts and backs of 88 different cards. These include five Dear Nurse Anesthetist cards, one card in Spanish (to Argentina), and an unmailed card showing the Abbott Escorts, a group of women who gave in-house tours at Abbott Laboratories.

The word "franked" is used in the book to be synonymous with "cancelled". However, franking actually refers to "... [an] authorized form of markings

affixed or applied to mails to qualify them to be postally serviced"... (see [www.answers.com/topic/franking](http://www.answers.com/topic/franking))

... not to the cancellation itself. This misuse emphasizes the non philatelic nature of the book.

A proper understanding of the value and scarcity of the cards requires information about the numbers of cards sent from the various locations. Unfortunately, this data is essentially absent from the book. There is also no discussion of the multiple origin and destination countries, or the variety of languages, fonts, and wordings used in writing the messages. These all detract from the value of the book as a reference for collectors. There are also some errors in interpretation and reading of the cards See an article by Cichorz at: [www.deardoctorpostcards.com/art-2005lundyerrata.html](http://www.deardoctorpostcards.com/art-2005lundyerrata.html)

In conclusion, this is an interesting book which provides an introduction to an unusual area of postal history and deltiology. It is not exhaustive and it contains some errors and omissions. While not exactly a coffee-table book it is certainly not a catalogue of or a definitive book about the cards. If you've never heard of these cards or you have one and would like to know a little more about it, consider checking the book out from the RMPL. There are other excellent sources of information, though, particularly on the internet on Tom Fortunato's website at the previously mentioned :

[www.deardoctorpostcards.com/#Members](http://www.deardoctorpostcards.com/#Members)

There is also a good bibliography on that website.

As both Cichorz and Fortunato point out, new cards and variations of old cards are regularly coming to light. Perhaps there will be an opportunity in the future to review a true catalogue of these cards, perhaps from Tom Fortunato? If, or when, such a definitive catalogue is published, the RMPL will certainly have it for you!





**New Member:** David Newell, Hobart, Tasmania  
David is an active member of the Tasmanian Philatelic Society (TPS) which meets once a month in Hobart. He and his wife, Kim, own The Stamp Place in downtown Hobart. His parents, Raelene and Rod Newell, opened the shop over 30-years ago and David and Kim have owned it for the past 10-years. He is also a member of the Australian Stamp Dealers Association (APTA) and the International Federation of Stamp Dealers Associations (IFSDA).

## Library "Wish Lists"

Some of the needed items over the next few months:

- o Paint to paint offices;
- o Picture hangars and wires;
- o Molly bolts
- o Parking lot paving;
- o Exterior painting
- o Digital projector
- o Laptop computer
- o Screen for projectors
- o Venetian blinds and/or window screens
- o Coat rack(s) and umbrella stand for meeting room
- o Supply cabinet for bathroom
- o Two small conference room tables
- o Office chairs for desks
- o Visitor chairs for offices
- o Tool box with basic tools (wrenches, screw drivers etc.)
- o 5 Wastepaper baskets
- o Coffee maker (Mr. Coffee size; not a large urn)
- o Saw horses

## NEW MEMBERS

We extend a warm welcome to those who have joined the library in the past two months.

Our current membership stands at 492

**Jim Krug** – Littleton, CO  
Collects U.S., Iceland, Zeppelins and Air Mail

**Jason Starvetsky**, –Westminster, CO

**Jerome C. Jarnick** – Troy, MI  
Collects Canada and BNA

**Robert (Bob) Walleen** – Aurora, CO  
Collects U.S., U.N., Canada and Europe

**Nolan Flowers** – Denver, CO  
Collects Mixed Foreign

**Terry Jellison** – Caldwell, ID  
Collects U.S. Mint before 1940

**Phillip R. Webber** – Pueblo, CO  
Collects Chile, Brazil and Forgeries

**Richard P. Barkley** – Englewood, CO  
Collects U.N. and Israeli material

**Mary Jane Boll**– Boulder, CO  
Collects U.N. and U.S.

**David Newell** – Hobart, Tasmania, Australia  
Owner, *The Stamp Place*, Hobart

**Victor Stone** – Hayling Island, Hampshire, UK  
Collects U.S. and Russia

## "Help", You Are Needed

Work on integrating the two buildings has begun. That's going to take hundreds and hundreds of hours by volunteers over the next several months. YES - that's right - Several Months.  
**WHEN CAN YOU HELP?** Please consider coming to the Library on Thursday mornings (9 to 12) and/or Saturday mornings (9 to 1 pm, sometimes to 4 pm). Don't be shy, we'll find something for you to do, and we'll always have those job assignments posted for easy reference. Right now, we're engaged in grounds clean up; future months will see us focusing on relocating books and periodicals, remodeling the parking lot; developing a formal garden area, applying lots of "mud" to the walls to complete new dry wall, painting the exterior walls, moving books and periodicals and much, much more.

## DONATIONS

The library thrives on the enthusiasm and generosity of its members. The following members have made donations to the library over the past two months. Pledges toward financing the building purchase and increased contributions have eased our new financial obligations. We thank each and every one who has contributed now and has also pledged continuing support over the next four years.

Paul Albright	William Douglass, Jr.	Peter Laux	Owen Robb
Randy Alexander	Jane Doyle	James Lee	James Russell
Joan Anderson	Sue Dunn	Frank Leitz	Richard Ruth
Robert Anderson	Geoffrey Dutton	Lisbeth Lord	Robley Rhine Estate
Roy James Atkinson	Harold Eason	Nancy Loring	Marty Rydberg
Aurora Stamp Club	Jerry Eggleston	Donald Lovelace	Roger Rydberg
Andrew Baer	Danette Ellison	Shannon Lovins	T. R. Sadler
Roger Cichorz	John Elsey	Stanley Luft	Charles Sandberg
Arapahoe Coin and Stamp	Donald Engelhardt	Sergio Lugo	Scandinavian
Carole Baptiste	Linda Ersek	Steve Lund	Collectors Club
Carl Barna	Walter Figel, Jr.	Clifford Lushbough	Stephen Schumann
Malcolm Barton	Ed Fisher	Clark Lyda	Richard Seeley
Tim Bartshe	Nolan Flowers	Waverly Machammer	Glenn Shaw
Ed Bathke	Erling Fossum	William Mahoney	Mary Shultz
Nicolas Bede	Peter Gault	Glenn Mallory	Colin Spong
Mary Bedford	Marc Gonzales	MaryEllen Markel	Stamp Camp USA
Don Beuthel	Larry Grant	Ken Martin	Stephen Stainsby
Ellengail Beuthel	Greater St Louis	Michael Maselli	Richard Stein
Rodney Bell	Stamp Club	Jerry Mason	Terry Stoehr
Jeffrey Beller	William Gum	Robert Mather	Victor Stone
Howard Benson	William Gunderson	William McCracken	David Straight
David Bize	Edward Gwinn	Steve McGill	Leroy Sullivan
Robert Blatherwick	Frances Hammond	Daniel Meschter	Charles Summers
Bob Blundell	Bert Hanou	Clifford Mestel	Larry Taft
Buster Boatman	Ron Harbeck	Dasa Metzler	Richard Taylor
Vince Borengasser	Gary Hart	Mike Milam	Dalene Thomas
George Brinkworth	Karen Hart	Ron Mitchell	Civia Tuteur
Craig Buhlman	Bobbie Heisterkamp	Jeff Modesitt	Mark Vainer
Patrick Callahan	John Herzog	Jim Moorman	Fay Van Buren
Dave Capra	Thomas Higel	L. Frederick Moose	David Van der Hoop
Eric Carlson	Sandra Higel	Steven Morehead	Jack Van Ens
Attilio Catanzano	Ronald Hill	Derrick Moss	Tonny Van Loij
Roger Cichorz	Allen Hofsetz	John Mulder	George Van Trump
William Clair	Gene Holgate	Terrence Murphy	Julie Verhagan
John Clement	Mark Hoskinson	Steve Nadler	Robert Walleen
Colorado Postal History	Jerome Husak	Dan Nieulandt	Bob Walters
Society	Fred Huskins	Randy Nilson	Jean Walton
Peter Colwell	Wayne Jackson	Larry Nix	Emily Warner
Joseph Coston	Jefferson County Library	Steve Peckar	Art Weaver
Thomas Crane	Barbara Kean	Roy Peterson	Suzanne Webber
Ken Creamer	Brian Kelly	PMCC, Colorado Chapter	Violet Weinman
Monica Crocker	David Kent	Joseph Ptak	Janice Weinstock
Joe Crosby	George Killian	Roger Quinby	Davis Weisberg
Drue DeBerry	Charles Kline	William Rapp	Dexter Williams, Jr.
James Debros	Tom Kran	Bill Rapp	Robert Wolf
Robert DeBus	Ron Lampo	Jim Reichman	Marvin Woolf
Stan Dempsey	Richard Lansing	W. David Ripley III	Judith Wright
Don Dhonau	John Larson	Norman Ritchie	Matt Zieringer

We have tried to include all recent donors on this list. It has been checked and re-checked but because of its length and with new donations coming in, we may have overlooked or incorrectly listed someone. This list above includes only recent donors who have donated since the November-December issue of *Scribblings*. We apologize if any names were overlooked. They will be included in the next issue.

Note: A number of the above donations have been made "In memory of Bill Bauer and Jim Ozment"

# Making New Textured Paper ... from your old scraps of envelopes

by Dick Seeley

When I joined RMPL in March of 2004, I volunteered to soak stamps off paper. Until this year, I soaked off the stamps and placed them into stock sheets. Then I put the empty paper scraps into our recycling bin for the city to collect.

Early in 2009, I saw a TV program on paper-making. It discussed paper-based items that were used, and one item was postage stamps! I went to the local library and checked out books on paper making.

Then I built two wooden 8-1/2 x 11" frames out of old hockey sticks, because they were hardwood and wouldn't soak up water. These frames are called deckles. You tightly tack window screen material onto one frame and leave the matching frame open.

Here are a few highlights of the process. I'll be happy to go into more detail with anyone who is interested. Put into your food blender a small amount of paper, add more water, and whirl the mixture into a pulp. Pour this pulp into the tub (kitty litter pan) until it contains about 1/3 pulp and 2/3 water.

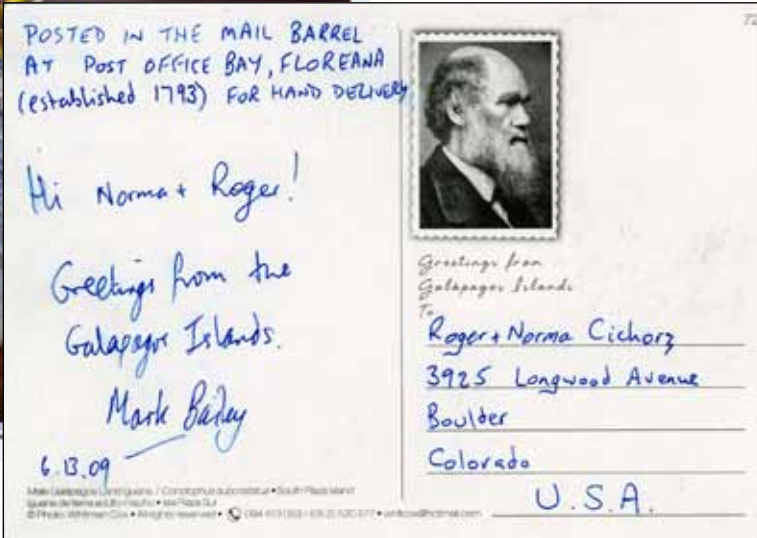
Hold the screened deckle with the open deckle on top, so the screen is between the two deckles.

Lower both deckles at an angle into the tub and allow the pulp to settle over the screen. Shake sideways to even out the pulp. Allow the deckles to drain.

Then using a towel, a piece of fabric, a sponge and a rolling pin the water is squeezed out and after a few steps you reveal your new wet paper page. Next, with two clothespins, fasten the fabric and wet paper onto a wire clothes hanger and hang to dry.

Once the new paper and fabric backing are dry, slowly peel off the paper from the fabric and weigh down the paper with something heavy for several days to completely dry. I also make round sheets with a slightly different method.





The Post Barrel, Floreana Island, Galapagos

## Special Delivery From The Galapagos

The above post card was dropped into the "Post Barrel" at Post Office Bay on Floreana Island, the Galapagos, on June 13, 2009. On August 20, 2009, a knock on his door surprised RMPL member Roger Cichorz, in Boulder, when a stranger, a freshman student at CU, handed him the post card. A novel way of sending mail around the world, the "post barrel" allows any sender to drop mail into the barrel with the hope that another visitor will deliver it sometime, somewhere.

## APS Looking For Volunteers in Denver

At this time, the American Philatelic Society staff and board of directors are unable to staff a booth at these two shows:

- Rocky Mountain Stamp Show,**  
Denver, CO, May 14-16, 2010
- National Topical Stamp Show,**  
Denver, CO, June 25-27, 2010

If there are any volunteers in the area who would be willing to man an APS booth and represent the society at either (or both!) of these two shows, please contact me, Dana Guyer, or Barb Johnson in our show office. We would love to discuss the possibilities with you.

Volunteers will receive a sheet of "handy tips" as well as a copy of the Membership Benefits brochure to read over in advance. You can also share the time with another person.

Working with someone else at the APS booth will allow you some free time to take in the show and perhaps even find some of those long-sought-after items for your own collection.

Please contact: American Philatelic Society  
Dana: 814-933-3815 or [dana@stamps.org](mailto:dana@stamps.org)  
Barb: 814-933-3803 Ext. 217 or [barbj@stamps.org](mailto:barbj@stamps.org)

## Latin America Study Group

**On Saturday, February 13,** the Latin America Study Group will present *Introduction to Collecting Central and South American Stamps* at 10.00 a.m. We welcome anyone who may be interested in information about the philately of countries 'south of the border' to come and meet the group as our members discuss their areas of interest and show examples from their collections. This group of about 15 collectors meets monthly at the library for programs and discussions. Come visit us on February 13th!

## Great Britain Collectors Invited

**The Machin Collectors Group** would like to invite all collectors of Great Britain stamps and postal history for a meeting to discuss our common interests and to consider expanding the Machin group to include all of Great Britain. A meeting will be held at the RMPL library sometime in February. The regular meeting of the Machin group is the second or third Sunday at 2:00pm, but the time and date of this meeting will depend on the interests of those responding and the availability of the library. Please contact Jeff Modesitt, at 303-741-2961 or by e-mail [jeffmcolorado@msn.com](mailto:jeffmcolorado@msn.com)

## Denver Postcard & Paper Show - Winter 2010

January 15-16, 2010, Jefferson County Fairgrounds, Golden, CO

HOURS: Friday, January 15 - Noon to 8:00 pm; Saturday, January 16 - 9:00 am to 5:00 pm

Contact: Dede Horan at 303-667-6212 or 303-220-9116 - e-mail: [DenverPostcardShow@comcast.net](mailto:DenverPostcardShow@comcast.net)

# Stamp Collecting Promotes Health Care

by Jack Van Ens, PhD

As New Year's Day marks the beginning of the 21st century's second decade, we lament how the past ten years has debilitated our spirits.

During the past decade, financial ruin, ravaging diseases and wars lingering like a nasty cold, have left their marks.

Where's the cure to make a fresh start?

Amid ugly health care debates, who promotes an antidote for what ails us?

It's so close at hand we overlook its curative potency.

Stamp collecting, a hobby that has delighted me for half a century, offers a cure.

How does stamp collecting restore health to our nation, if not the world?

Skeptics reject stamp collecting as an agent for curing our nation's ills because stereotypes about the hobby dupe them. They are suspicious of stamp collecting's formal name, "philately." It sounds uncouth. Other critics claim philately is too sedentary for savvy video game players.

Others charge that stamp collecting's natural state is dullness, like being forced to hear a year's worth of dry sermons from a joyless preacher.

Philatelists sit for hours manipulating scraps of colorful paper using stamp tongs, which look like long-nosed tweezers a matron uses to pluck unsightly facial hair. Cynics believe philatelists sport expensive shirts that require plastic pocket protectors in which a fistful of Bic pens are jammed. The list of reasons why philately is passé and doesn't produce better healthcare goes on ad infinitum.

How does philately cure health care maladies? Stamp collectors are educated. They are not parochial, tied to few interests. Philatelists of both sexes qualify as the "educated gentlemen" in Thomas Jefferson's day. Researching stories behind stamps enlarges mental horizons. Rubes stay at home, thinking their backward abodes are the center of the universe. Stamp collectors become world travelers, even those on fixed incomes. Philatelists peruse the world by researching what's commemorated on stamps.

Knowledge gained from stamp collecting frees us from parochial nonsense and local prejudices. The world becomes our oyster when we collect stamps from every nation on the globe.

Health care, well rounded and universal in reach, will impact our nation in proportion to the number of citizens who are stamp collectors. We desperately need a ready supply of liberally educated people to remedy our nation's faults. Philately supplies ingredients that mold valuable citizens. This hobby hones the intellect, instills wisdom and teaches dynamic history so we don't blunder on, repeating the past's mistakes.

The British government, after appointing Benjamin Franklin to co-share the highest post office job in America, fired him in 1774 for his political rebellion.

A few years later, Richard Price, an English radical who empathized with Ben's love for freedom, wrote about why he found America attractive. "A Spirit," Price claimed, was arising in the Western world. This spirit promised "a State of Society more favorable to peace, virtue, Science and liberty



(and consequently to human happiness and dignity) than has yet been known .... The minds of men are becoming more enlighten'd, and the silly despots of the world are likely to be forced to respect human rights and to take care not to govern too much lest they should not govern at all."

Richard Price's salute to America's colonial roots functions as a prescription for national health care and reflects a philatelist's mentality.

Thomas Jefferson, whose legacy includes posting almost 20,000 extant letters, died before postage stamps were first nationally stuck on envelopes July 1, 1847.

Remember what he proposed to the Virginia legislature in 1779 to make our nation healthier? Jefferson drafted "A Bill for Establishing Cross Posts." By "cross posts," Jefferson imagined a grid of new roads branching off from the main north-south route intersecting Virginia. He wanted this network of roads enlarged so that Virginia no longer regarded Massachusetts as remote. With a matrix of new roads laid, Virginia, along with the emerging nation and the world, would shrink. Carrying missives from and to isolated hamlets, messengers crisscrossing these postal roads would increase communication.

Erecting postal routes signified more than shovel ready projects. Jefferson believed the roads promoted "the more general diffusion of public intelligence among the citizens of this commonwealth." How? Citizens would stay in touch with each other by letter, share common strengths and cope with cultural differences to produce a just, humane and intelligent society. Postal roads helped realize this dream. Robust health vital to the Republic emerged.

A stamp mounted on an album page looks too tiny to amount to much. Jefferson knew, though, its inherent power. Though small, stamps have enormous potency. They act like the biblical mustard seed "which when sown upon the ground is the smallest of all seeds on the earth; yet when it is sown, it grows up and becomes the greatest of all shrubs..." (Mark 4:31-32). From postal communication emerges reasoned discourse, reliable citizens and a renewed eagerness to bridge cultural divides. National health care is embedded in colored pieces of paper with adhesive on the underside.

Pictures on stamps lift up an important figure or a pivotal event shaping history. Philatelists delve into stories behind stamps. These stories, precious as our children, help build a strong Republic. Truths are stamped into our national identity: Educated citizens function as democracy's building blocks. Conversely, a healthy Republic furnishes soil in which wise patriots grow. Philately acts like fertilizer that produces a bumper crop. Here's a cure, much overlooked, in the health care debates.



## SECOND SATURDAY PROGRAMS AT THE LIBRARY

Second Saturday programs are sponsored by the library and attract a friendly group of folks who are interested in a specific subject or who are interested in learning more about an area of philately that may be new to them. Contact Jim Kilbane if you would like to present a program.  
e-mail: [aurora\\_80017@yahoo.com](mailto:aurora_80017@yahoo.com)

**The programs begin at 9:00 AM and are over by 10:00 AM.  
Doughnuts and coffee are complimentary and all are welcome.**

**JANUARY 9, 9:00 AM**

*The Swiss Postal Invasion of Italy*  
by Charles LaBlonde



This is a philatelic detective story about a clandestine event that was discovered 5,000 miles from the scene of the crime! As the Swiss post office sought to expand its customer base beyond the borders of tiny Switzerland, it moved to Italy and took over the tourist post card business. This presentation will explain how the system was set up, how it operated, and how it was actually discovered in Colorado and how it came to a crashing halt.

**FEBRUARY 13, 9:00 AM**

*Stamps of Austria's First Republic*  
by Steve Schweighofer



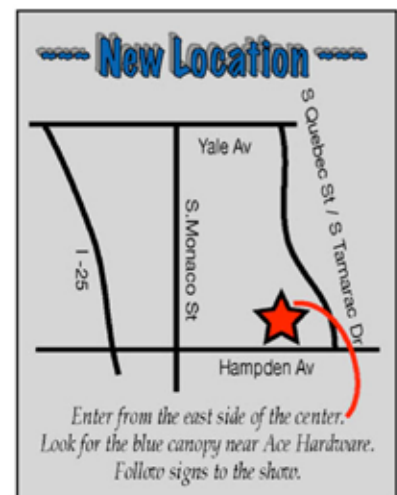
Steve will be presenting a program on Austria's local issues during Austria's First Republic, 1918-1938. All of the material are non-Scott items and all are from Steve's collection. Time permitting, other material relating to Austria will be shown.

# THE CHERRELYN STAMP CLUB PRESENTS CHERPEX XXXVI

**~ ~ COME JOIN US ~ ~**  
**~ NEW LOCATION ~**  
**~ NEW SHOW DATES ~**

**TAMARAC SQUARE SHOPPING CENTER**  
**7777 EAST HAMPDEN AVENUE**  
**HAMPDEN AV AT TAMARAC ST**

1-25/Hampden Av. Exit - East 2 miles  
~ ~ Enter on east side of center near Ace Hardware ~ ~  
**SATURDAY, JAN. 30 - 9:00 AM - 5:00 PM**  
**SUNDAY, JAN. 31 - 10:00 AM - 4:00**



# POSTAGE STAMP SHOW

For Information: Eric Carlson - 303-694-4252 - [margeric@comcast.net](mailto:margeric@comcast.net)



## What's Happening at the RMPL... "Come and Enjoy the Activities"

Monday, Tuesday, Wednesday, Friday, Saturday 10:00 AM - 4:00 PM  
Thursday 2:00 - 8:00 PM. Closed Sundays and Holidays. Phone: 303.759.9921

**Meeting times and places sometime change. It is best to call the library or the club to confirm the place and time. A calendar of reserved club times is kept by Don Beuthel at the library. Clubs should check the calendar regularly and notify Don (303-755-9328) of any changes or updates.**

### JANUARY 2010

**January 1-2 - CLOSED - New Years**

**January 6** - Meeting-Aurora Stamp Club.  
6:30 PM trading, 7:30 PM meeting/program

**January 9** - 9:00 AM

#### **Second Saturday at the RMPL**

Program by Charles LaBlonde  
*The Swiss Postal Invasion of Italy*

**January 9** - Meeting - 10:00 AM  
Mexico/Latin America Study Group

**January 9** - Meeting - 10:00 AM  
Scandinavian Collectors Club

**January 9** - Meeting - 11:30 AM  
Universal Ship Cancellation Society  
U.S.S. Colorado Chapter

**January 9** - Meeting - 1:00 PM  
TOPIC - Topical Collectors in Colorado

**January 13** - Meeting - 7:00 PM  
Denver Germany Stamp Club

**January 14** - Meeting - 6:30 PM  
Denver Post Card Club

**January 17** - Meeting - 2:00 PM  
Denver Machin Study Group

**January 18 - CLOSED - M.L. King Day**

**January 26** - Meeting - 7:30 PM  
Rocky Mountain Stamp Show Committee

**January 27** - Meeting 7:30 PM Israel Stamp Club

**January 28 - RMPL Board Meeting 7:00 PM - All members invited**

**January 30** - Meeting - 10:00 AM (at Cherpex Stamp Show)  
Metro Denver Young Stamp Collectors Club

### FEBRUARY 2010

**February 3** - Meeting - Aurora Stamp Club  
6:30 PM Trading; 7:30 PM meeting/program

**February 6** - Meeting 10:00 AM  
Scandinavian Collectors Club

**February 10** - Meeting - 7:00 PM  
Denver Germany Stamp Club

**February 11** - Meeting - 6:30 PM  
Denver Post Card Club

**February 13** - 9:00 AM  
**Second Saturday at the RMPL**  
Program by Steve Schweighofer  
*Stamps of Austria's First Republic*

**February 13** - Meeting 10:00 AM  
Mexico/Latin America Study Group

**February 13** - Meeting 11:30 AM  
Rocky Mountain Aerophilatelists

**February 20** - Meeting - 9:30 AM  
Metro Denver Young Stamp Collectors Club

**February 23** - Meeting - 7:30 PM  
Rocky Mountain Stamp Show Committee

**February 24** - Meeting - 7:30 PM  
Israel Stamp Club

Scribblings is published bimonthly by the Rocky Mountain Philatelic Library, Editor, Ronald Hill, 2038 S Pontiac Way, Denver, CO 80224. The Rocky Mountain Philatelic Library is a chartered Colorado nonprofit corporation and an IRS designated 501 (c)3 charitable organization. Membership subscriptions over that for the regular membership, and donations of appropriate philatelic materials, are deductible for U.S. income tax purposes.

#### RMPL BOARD OF DIRECTORS

President: Sergio Lugo - Operations Manager: Don Beuthel - Vice-President: Jim Kilbane  
Corresponding Secretary: Don Dhonau - Recording Secretary: Paul Lee - Treasurer: Bob Blatherwick  
Directors: Jan Marie Belle - Roger Cichorz - Dalene Thomas - David Weisberg, Emeriti: James L. Ozment and John H. Willard