

# Scribblings

...from the Rocky Mountain Philatelic Library



Ellengail Beuthel, Librarian...

Vol. 17 - No. 5  
www.rmpldenver.org

2038 South Pontiac Way, Denver, CO 80224  
303.759.9921

September-October 2009  
Email - rmpl@qwestoffice.net

## IN THIS ISSUE

RMPL Board .....	1,4
Stamp Collecting Started in China.....	1-2
The Prez' Observations .....	3
We Remember The Past As We Move On.....	5



What's New on the Shelves.....	6-7-8
--------------------------------	-------



Book Reviews.....	8-9, 10
Donations.....	9
New Members .....	9
Fund Raising .....	11



The "Beetle" Unveiled	12-13
APEX Stamp Show.....	13



Second Saturday Programs.....	14
What's Happening Calendar ..	Back Cover



## RMPL Board Decides to Begin Negotiations To Acquire Neighboring Property

### Would Expand Library Space With Building and Land

After hearing reports from the four committees formed to investigate purchasing the adjacent property, the Board, at a special meeting on August 25, 2009, voted to move ahead and begin negotiations to purchase the property from the owner.

Each committee presented their recommendations along with comprehensive studies of each area they investigated. The Finance Committee presented a variety of financing options after interviewing a number of banks and private investors. They also presented a detailed evaluation of the present finances of the library as well as the best use of available funds.

*Continued on page 4*

## Two RMPL Members: Stamp Collecting Started in China For These Long Time Collectors

*by Judith Wright*

Two RMPL members have been to Harbin, China, although under very different circumstances than George Killian's visit in February for the sports federation meeting (last issue).

Less familiar to us than stories of European immigrants travelling to the U.S., are the stories of immigrants who travelled east to Asia. In the years just before the war China admitted several thousand Jews from Germany and Poland. The immigration of Russian Jews began about 1900 as unrest and brutal treatment spread before the collapse of the Czarist government.

In the far east, Mark Vainer's grandfather had opened restaurants along the route of the Manchurian Railroad. His father was anxious to avoid being called to serve in the Czar's army just before the Revolution and in 1916 embarked on his adult life far from the turmoil.

*Continued on page 2*

## Stamp Collecting Started in China For These Long Time Collectors

*Continued from page 1*

As a young boy, Mark lived in Harbin, China where, at that time, his father was a partner in a bank. In 1936 the family moved to Shanghai where his father continued his career as a banker. The family lived comfortably and Mark attended a British boys school.

Under Japanese occupation White Russians and Russian Jews were treated well.

When a friend of his father's introduced him to stamp collecting with the gift of a few stamps, Mark's lifelong hobby was born.

Mark settled in Denver and learned the printer's trade, spending his career at National Jewish Hospital where he met his wife, Felice, —a lifelong partner who shared his hobby. Both were longtime volunteers at the RMPL until her death in 2006. Mark is a member of a number of stamp clubs and still an active volunteer every week at the library.

**Irwin Chaim's** family fled their native Germany later—almost too late. It was late in the year 1940 when they travelled by train into the night, not knowing if they would be able to cross the border from Germany into Russia. As it was, most of their personal possessions were confiscated or left behind, but from the relative safety of Moscow a telegram was sent to Irwin's grandmother. Unable to travel, she had to remain in Germany. The coded message "The roses arrived" informed her that the family had made it across the border; they would never see her again.

After a few days in Moscow, they travelled on to Manchuria, the train finally reaching Harbin, the harbor from where they would sail to Shanghai where they would spend the duration of the war.

The Germans insisted that the occupying Japanese forces should confine Jewish refugees, like the Chaims, in concentration camps, but the Japanese had their own plans.

Irwin's father, a dentist, found favor with the Japanese by treating dental emergencies. Although living conditions were not good for the Chaim family and the areas where immigrants were allowed to live were close and confined and some lacked sanitary facilities, the elder Chaim oversaw his family's welfare and safety heroically.

The war ended and thousands of Jews who had waited out the war years in Shanghai sojourned again to find new homes in new countries.



*Irwin Chaim*



*Mark Vainer*



*Irwin Chaim's original stamp album from the Shanghai Jewish Youth Association School. A school book was used as an album and the stamps were individually protected with cellophane from discarded cigarette wrappers.*

Irwin also settled in Denver where his father operated a dental laboratory. He still lives in his family's home with his wife Bobbie whose passion for collecting is equal to his own. Irwin is a member of a number of stamp clubs including the Aurora Stamp Club and the Denver Stamp Club and works part-time at Caboose Hobbies, a model railroad store in Denver.



## *The Prez' Observations - Sergio Lugo*

**Wow – it has been a hectic couple of months since I last put together a message to the membership. I'll recap with you some of the RMPL events of these past two months – and if they are old hat to you by now, your indulgence is requested.**

### BUILDING ACQUISITION

On July 24<sup>th</sup> we were offered the right of first offer for the property at 2048 S. Pontiac Way. On July 30<sup>th</sup>, a meeting of the RMPL Board was called with attendance by 33 members. It was decided to investigate the offer more thoroughly and to solicit member feedback for consideration. A mailing was made on short notice to all members. Feedback was requested by August 24<sup>th</sup>, to which 304 members responded (65% of the membership), with 84% in favor and 16% opposed. On August 18<sup>th</sup>, a general meeting of the membership was held to explain the proposal and answer any questions and concerns. 40 RMPL members were in attendance. On August 25<sup>th</sup>, the reports of several committees charged with investigating the offer were presented. Following those presentations the RMPL Board decided to make an offer for the property, with instructions to the Negotiations Committee to decide on the terms most favorable to the RMPL and to engage in negotiating with the owner of the property. More will be reported on the outcome of these negotiations at the next Board Meeting on September 17 and in the next issue of *Scribblings*.

### UNION CATALOG

It is almost there. APS/APRL personnel have been working diligently these past several months to bring to reality a philatelic catalog system that would merge the holdings of philatelic libraries throughout the country, and eventually include international libraries. The RMPL, and in particular

Roger Rydberg, Travis Searls and Ellengail Beuthel, have been working toward this goal for nearly three years. I'm happy to announce that little by little its getting there. If you'll check the APRL Catalog "location" field, you'll find that the RMPL is cited, with at least 5,000 titles in the Union Catalog. Enhancements and improvements were also discussed at the recent APS STAMPSHOW in Pittsburgh.

### UPCOMING AUCTION

The third annual bulk lot auction has been scheduled for Thursday, November 12 beginning at 6 pm. It's a little different in format from prior years, and we hope the improvements make for more attractive and active bidding and attendance. The catalog will be mailed with the November-December issue of *Scribblings*, in sufficient time for you to review the descriptions and the lots themselves.

### GRANT PROPOSAL

A grant proposal was submitted on August 3<sup>rd</sup> to the Colorado State Library. The proposal was prepared by the team of Jan Marie Belle, John Bloor and David Weisberg, with the assistance of other RMPL members. We will not hear of the outcome until mid September. The proposal calls for the digitization of vintage Colorado post cards and their eventual posting to the internet. The RMPL will need additional volunteers to engage in the actual scanning of the images. Would you like to help with this significant project for the Library (and incidentally learn a great deal about digital scanning). If so, please call 303-759-9921 at your earliest opportunity.

And have a beautiful September day when you receive this. You are all invited to the next scheduled meeting of the RMPL Board, Thursday, September 17, 2009 7:00 pm.

Sergio

**Visit The RMPL Web Page & Online Catalog**  
**[www.rmpldenver.com](http://www.rmpldenver.com)**

## Board Decides to Begin Negotiations

*Continued from page 1*

The Facilities Committee reported on their study of the structure and on a number of options on the best use of the space until there is money to connect the two buildings.

The Fund Raising Committee reported on the excellent response of pledges from members. See Special Report on Fund Raising on Page 11.

The Negotiating Committee presented its analysis of real estate sales and prices in the Denver Metro area. Hundreds of commercial properties were researched including visits by the committee to properties on the market in the area of the RMPL. The Committee will begin negotiations immediately with the owner of the neighboring property.

### SPECIAL RMPL BOARD MEETING - AUGUST 25, 2009

After a month of intensive discussion and fact finding, the RMPL Board on August 25th, 2009 decided to make an offer on the purchase of the building next door at 2048 S. Pontiac Way. A variety of factors came into play in the decision – all of which are discussed below.

1. 304 of our 480 members returned their ballots, or nearly 64% of the membership. Of those responding, 255 were in favor of investigating the purchase, with 127 of those pledging financial support. Your response to this momentous decision was most appreciated by the Board – particularly on such short notice.

2. Considerable funds have already been pledged toward lowering the mortgage amount sufficiently to defray payments, interest and any shortfall in our operating budget. Many of you indicated an intention to pledge later when more information was available. A strong fund raising campaign will be conducted soliciting further contributions

3. Following the findings presented by the four committees formed to with investigate the possible purchase, the Board instructed the Negotiating Committee to proceed immediately to begin negotiating.

4. A variety of findings by the committees were presented during the evening's discussion that clarified many of the concerns raised by members.

a. There was a high rate of ballots returned, as previously noted, and with 84% of the voters in favor and 50% of those being willing to pledge, it was particularly gratifying to the Fund Raising Committee. (see article on page 11)

b. The Negotiating Committee analyzed many comparable properties. After doing the comparability check, the committee, which consisted of a commercial real estate agent, a CPA, the Scribblings Editor and a Housing Community Executive reported to the Board on their assesment of the real estate market in this area.

c. The Finance Committee presented a variety of financing options after interviewing a number of banks and private investors. They also presented a detailed evaluation of the current finances of the library as well as the best use of available funds.

The critical element in the findings was a detailed presentation by Howard Benson, on budgeting. His analysis pointed out the expenses for the operation of the RMPL with the acquisition of the 2048 property and the income projections to cover those expenses. We hope to also make maximum use

of existing collections that have already been donated to the library, for liquidation of the mortgage.

d. The Fund Raising Committee did yeoman's work in securing the commitment of the many members who pledged. A complete review of all pledging and other financial matters will be discussed at the next Board Meeting. The committee presented also its recommendations for a long range strategy of fund raising that would be guided by Board member David Weisberg. That strategy will be discussed in future Board meetings

e. The Facilities Committee presented on its findings that the building was well suitable for acquisition by the RMPL and with minor remodeling costs it could be fully functional for limited use in a short amount of time. It also projected expenses for the type of work that would be involved in remodeling or to make the two units fully integrated.

Next Board Meeting is September 17, 2009, 7:00pm

#### CHARLES B. McCLURE - 1929-2009

Charlie, as we all knew him at the Library, passed away this past week. Born and raised in Baltimore, Md., Charlie married Grace Wilson in 1953, after having served in the U.S. Army between 1951 and 1953 – where he was a radar instructor. He is survived by Grace, their three children (Rob, Janet and Scott) and their six grandchildren who were the joy of his life – Ryan, Rachel, Kyle, Teagan, Steven and Amy. Employed by Martin Marietta in 1962, Charlie was transferred to Colorado by the company and was employed there until 1991. His passion since childhood was stamp collecting, particularly US issues, and was a frequent visitor and avid member of the RMPL since its founding. At the August 18th special membership meeting of the RMPL to discuss the acquisition of the new property, Charlie spoke highly favorably in favor of the acquisition. His family has asked that memorials be made to the RMPL Library, for the attention of the Building Acquisition committee. Services for Charlie are scheduled for September 9th at Ft. Logan National Cemetery at 2 pm. A memorial reception is scheduled for 3 – 5 pm at Hudson Gardens, 6115 S. Santa Fe., Littleton.



Photos from the RMPL scrapbook also installing the new carpet before the present building was occupied.

## We Remember The Past As We Move On

(excerpts from 15th anniversary July-August 2008, Scribblings, by Peter Adgie)

Take two school teachers, a chemist, a furniture dealer, a railway construction engineer, a television reporter, a carpenter, and a professional librarian: add a heavy dose of philatelic lore, and bingo! You have the start of a collection of stamp-related materials that would expand and develop and exceed all expectations.

Over a period of years, what started with Saturday 'burrito' lunch meetings, these visionaries met in homes and basements; dreams were shared, hopes raised (and felled); and then came the call to action!

Don Beuthel, Bill Dunn, Jack Willard, Jim Ozment, Roger Rydberg, signers of the original Articles of Incorporation, were soon to be joined by a corps of similarly dedicated people, launched their philatelic craft into the Rocky Mountain world.

In May 1996, 2038 South Pontiac Way (our present building) was purchased (with a mortgage!) and for several more months, the building underwent a major renovation. Steve Schweighofer, Jim Kilbane, Roger, Sergio Lugo, Bob

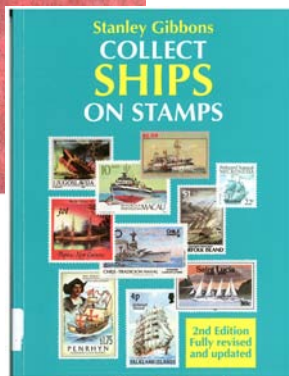
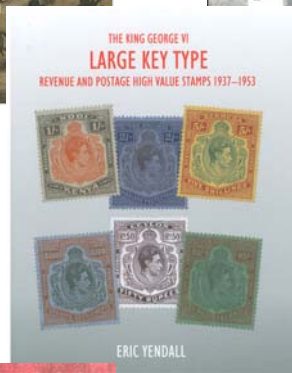
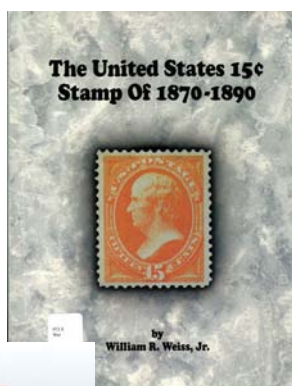
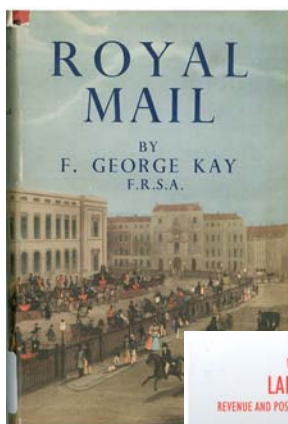
Blatherwic, Ron Mitchell, and twenty or more others, joined with those early visionaries, each with their own gifts, to create the highly professional library that we honor today.

The RMPL was officially opened in its present site on August 3, 1996. None of these efforts would have been effective without the expertise of Ellengail Beuthel, who for all these years has voluntarily given dedicated cataloging and detailed reference skills. Yet we need to stress that, unlike other philatelic libraries and research centers, RMPL has never paid its increasing and committed staff. Virtually all of the philatelic materials, along with the furnishings to display and house them have been donated.

The stories of the past resound in all the developments: stamp clubs meeting at the library, major and not so major collections of stamps, literature, catalogs and as well as thousands of volumes available for research.

Fiscal responsibility along with the amazing generosity of the Library's members made it possible to pay off the mortgage in 2003.

## WHAT'S NEW ON THE SHELVES?



### UNITED STATES

- 100 Years of Stamp Production, 1894-1994*  
*The American Mail: Enlarger of the Common Life*,  
 by Wayne E. Fuller
- The Beginnings of the True Railway Mail Service and the Work of George B. Armstrong in Founding It, with supplement: Bibliography of State, National and Canadian Transit Mail Literature* (Western History Collection)
- Datz Philatelic Index of United States Postage Stamps*,  
 by Stephen R. Datz
- A Guide to Grading and Expertizing United State's Stamps: An Illustrated Guide and Discussion of PSE's Grading System and Various Issues Pertaining to Expertizing U.S. Stamps*, by William A. Little and Michael W. Sherman
- Guide to United States Vending and Affixing Machine Perforations, 1907-1927*, by Steven R. Belasco
- A Guide to U.S. Design Numbers, 1847-1947*,  
 Published by Professional Stamp Experts (PSE)
- North Carolina Postal History Commission Interim Report*
- The Postal History of the AEF, Updates I and II to the Second Edition*; edited by Theo. Van Dam
- The Post Office Department, by George Cullinan*
- Railway Mail Service, Schedules of Mail Trains (various divisions and years)* (Western History)
- A Short Account of the Great White Fleet, Its Mails, and Its History Making Cruise Around the World from December 16, 1907 to February 22, 1909*,  
 by George Saqqal
- Special Mail Routes of the American Civil War: A Guide to Across-the-Lines Postal History*,  
 by Steven C. Walske and Scott R. Trepel
- State Revenue Catalog Number Prefixes*, by Peter Martin
- The United States 15c Stamp of 1870-1890*,  
 by William R. Weiss, Jr.
- U.S. Route and Station Agent Postmarks: Historical Supplement; Railway Historical Notes with Maps*,  
 by Charles L. Towle (Western History Collection)

### ASIA

- Chinese Postal Service*, by China, Directorate General of Posts
- Eurasia Aviation Corporation: a German-Chinese Airline in China and its Airmails, 1931-1943*,  
 by Peter Moeller and Larry D. Sall  
**(Reviewed this issue)**
- Indochina and the French Offices in China: Use and Nonuse of the French Colonial Allegorical Group*,  
 by Edward J. Grabowski
- China from Manchu to Mao*, published by the League of Women Voters of Los Angeles
- The Postage Stamps of the Pao Tzu Ku Bandit Post*,  
 by Wolfgang Baldus

### COLORADO

- Railway Postal Markings (Colorado)*;  
 Compiled by John H. Willard  
 (Western History Collection)
- A Reference Collection of Postal Markings (Colorado)*;  
 Compiled by John H. Willard  
 (Western History Collection)
- This Was Colorado: A Postcard Collection (15 vols. In 13 vols.)*;  
 Compiled by John H. Willard,  
 arranged by Tonny Van Loij (Locked Case)

## WHAT'S NEW ON THE SHELVES?

### CANADA

*The Canadian Revenue Stamp Catalogue, 2000 Edition,*  
by Erling S.J. van Dam

### EUROPE

*200<sup>th</sup> Anniversary "Posta Settinsulare": Catalogue of Exhibits,  
the History of the Septinsular Postal Services From Their  
Creation in 1803 up to the Union of the Ionian Islands with  
Greece, in 1864*

*Austria Netto Katalog: Briefmarken: Osterreich Spezialkatalog,  
2008-2009*

*British Commonwealth Part 1, Great Britain and Aden to Hong Kong;  
Part 2, India to Zanzibar, Toddco priced catalog*

*Ersttags-Brief Katalog: Berlin-Bund-DDR-Osterreich-Saar,*  
published by Sieger Verlag

*Facit Postal 1991 (Swedish Postal History Catalogue)*

*German/English Philatelic Dictionary,*  
by The German Philatelic Society

*German North Atlantic Catapult Flights, 1929-1935:  
Catalogue of the Airmail of the German North Atlantic  
Catapult Flights 1929-1935 and Supplementary Airmail  
Flights to Cherbourg 1929-1939,*  
by James W. Graue and Dieter Leder

*Irish Aerogrammes and Airgraphs,* by William J. Murphy

*Irish Airmail: Balloon Posts, Rocket, Helicopter, Parachute and  
Glider Mail,* by William J. Murphy

*NORMA Suomi Erikoisluettelo 1845-1985  
(Finland Specialized Catalogue)*

*The Offset Berlin Post Office Stamps of 1920 (ISG Handbook #3,*  
by David W. Barnette

*Schriftenreihe (publication series on German philatelic topics) 2, 4, 5, 6,*  
published by the Research Council of the Federation  
of German Philately

*Simone Taxis (Tasso) and the Posts of Milan During the Renaissance  
(Dual language: Italian and English),*  
by Giorgio Migliavacca

*Specialized Catalogue of Swedish Postage Stamps and  
Postal Stationery, 1976-1977 and 1982-1983 Editions,*  
published by The Philatelic Society of Sweden

*The Swiss Post International Activity in Italy: The Baveno Story,*  
by Charles J. La Blonde

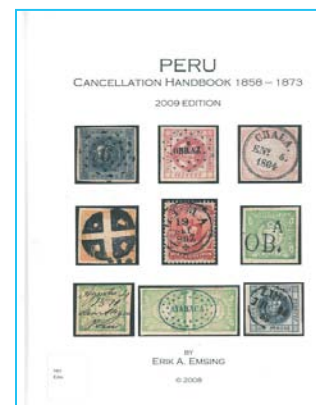
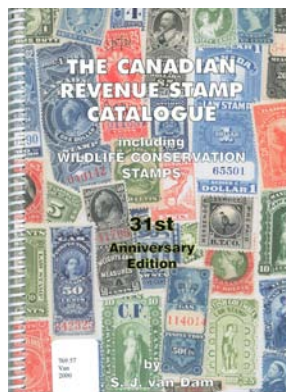
### LATIN AMERICA

*Commercial Zeppelin Flights to South America: the Commercial South  
America Flights and Airmails of the Zeppelin Airships,*  
by John Duggan and Jim Graue

*Peru Cancellation Handbook, 1858-1873,* by Erik A. Emsing

### POLAR

*Deception Island Antarctica: an Historic and Philatelic Record,*  
by Stephen Pendleton **(Reviewed this issue)**



### TOPICAL

*Olympic Games,* by Chow YiuKee (copies of philatelic  
memorabilia from the author's collection)

*Torino 2007, Storia delle Universiadi Invernali e non Solo,*  
by Luciano Calenda and Gianni Galeotti (Olympics)

### MISCELLANEOUS

*The Beacon: First Days of the Bicolor Air Mail Stamp.*  
Photocopy of an exhibit

*Bibliography of General Literature in the Philatelic Library  
of Brian J. Birch,* by Brian J. Birch

*The Complete Guide to Stamps & Stamp Collecting: the Ultimate  
Illustrated Reference to Over 3000 of the World's Best  
Stamps, and a Professional Guide to Starting and  
Perfecting a Spectacular Collection,* by James Mackay

*Directory of Route Agent Routes 1837-1882,* by John L. Kay  
*Moving Mail and Express by Rail,*  
by Edward M. DeRouin (Western History Collection)

*The Electric Medium: a Pattern for the Early Development of the  
Electric Telegraph in the United States, Signified by a  
Collection of Telegraph Delivery Envelopes,*  
by Robert Dalton Harris

*Fakes, Forgeries, Experts No. 112 (2009)*

*The Scope Book,* Mobile Post Office Society  
(Western History Collection)

*Showcasing Your Stamp Collection: a "How-To" Guide for Creating  
Original Albums [and] Supplementing Ready-Made Albums,*  
by C. E. Foster

*The Stamp Atlas,* by Stuart Rossiter and John Flower

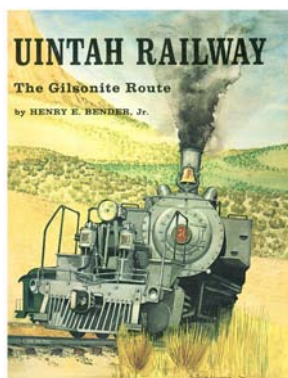
*The Stamp Collectors Round Table: Representing the Wisdom and  
Experience of Thirty Two Experts,*  
edited by Foster W. Loso

*Standard Handbook of Stamp Collecting (New revised edition),*  
by Richard McP. Cabeen

*Standard Postage Stamp Catalogue, 2003, Vol. 1 [DVD],*  
Scott Publishing Co.

*Welcome to the World's First Kwik Sort Stamp Finder and Book:  
Lists or Illustrates all Stamps of Canada and the United  
States of America by Denomination,* by Tracy J. Douglas

## WHAT'S NEW ON THE SHELVES?



### NON-PHILATELIC

- Historic Malaya: an Outline History*, by M.C. Sheppard
- Lewis & Clark and the Crossing of North America*,  
by David Holloway (Western History Collection)
- Sacagawea Speaks: Beyond the Shining Mountains with  
Lewis & Clark*, by Joyce Badgley Hunsaker
- Langenscheidt's Pocket Polish Dictionary:*  
*English-Polish, Polish-English*,  
by Tadeusz Grzebieniowski
- Lewis & Clark: Voyage of Discovery*, by Stephen E. Ambrose  
and Sam Abell (Western History Collection)
- Mail Memories: Pictorial Guide to Postcard Collecting.*  
*Post Card Guide; 1500 Pictures with Prices*,  
by John M. Kaduck
- Price Guide for Pioneer Postcards: The Story of Mailing Cards to  
1898 with Illustrated Check List*, by James Lewis Lowe  
(this is a non-illustrated companion to *Pioneer Postcards*  
by J. R. Burdick, which is illustrated)
- The West: an Illustrated History*, by Geoffrey C. Ward  
(Western History Collection)

### NON-PHILATELIC

#### (Railroads - Western History Collection)

- Apex of the Atlantic*, by Frederick Westing
- Articulated Locomotives*, by Lionel Wiener
- The Giant's Ladder: David H. Moffat and his Railroad*,  
by Harold A. Boner
- The Great Steam Trek*, by C. P. Lewis and A.A. Jorgensen
- The Impossible Railway: The Building of the Canadian Pacific*,  
by Pierre Berton
- Iron Horses: the Illustrated History of the Tracks and Trains of  
North America*, by Michael Del Vecchio
- The Last of Steam: a Billowing Pictorial Pageant of the Waning  
Years of Steam Railroading in the United States*,  
by Joe G. Collias
- Little Railways of the World*, by Frederic Shaw
- Locomotives and Cars Since 1900*, compiled and edited  
by Walter A. Lucas
- The Moffat Road*, by Edward T. Bollinger and Frederick Bauer
- Narrow Gauge Memories, 1968*, Kiwanis International
- North America's Great Railroads*, by Thomas York
- Pocket Guide to American Locomotives*, by Walter A. Lucas
- Portrait of the Rails: From Steam to Diesel*, by Don Ball
- Riding the Cumbres and Toltec Railroad*, by Spencer Crump
- Some Classic Trains*, by Arthur D. Dubin
- Steam in the Rockies: A Denver Rio Grande Roster*,  
published by the Colorado Railway Museum
- Uintah Railway: The Gilsonite Route*, by Henry E. Bender, Jr.
- USRA 2-8-8-2 Series: Classic Power Series 3*, by Thomas Dresser
- Vanishing Varnish: Denver and Rio Grande RR*,  
by Gregory LePak
- The Virginian Railway*, by H. Reid

## BOOK REVIEW

### *Eurasia Aviation Corporation, a German-Chinese Airline in China and its Airmail, 1931-1943*

by Dr. Peter Moeller and Dr. Larry D. Sall (Jim & Me Ink, Valleyford, WA; 2007). Reviewed by John Bloor



The story of the **Eurasia Aviation Corporation** is intertwined with the history of China, Germany, Russia, and the world during the 1930s and early 1940s. Because of the Treaty of Versailles, signed in June, 1919, there were severe limitations on aircraft construction in Germany. To circumvent this, manufacturing companies and airlines

were established in other countries but with German participation. These included SCADTA (Sociedad Colombo Alemana de Transporte Aéreo) in Colombia, DERULUFT (Deutsch-Russische Luftverkehrs AG) in Russia, and others. Thus it was reasonable for Germany to become involved in another airline venture in China.

In 1926, Deutsche Luft Hansa conducted an initial survey flight to Beijing. This was followed by a second survey flight from Berlin to Irkutsk in August, 1928. The original plan was to use the trans-Siberian route to connect Europe to China. However, in the summer of 1929 the Soviet government announced that they would create their own trans-Siberian air route, effectively eliminating establishment of a Luft Hansa



route through Siberia. Competition was also developing from the China National Aviation Corporation (CNAC), a joint Chinese-American venture. If Germany was going to get a share of the airline and airmail business in China, it needed to do it soon.

Finally, in February, 1930, Deutsche Luft Hansa signed a ten year air route contract with Beijing. It included three possible routes, all starting in Nanking and connecting with the Soviet air system in Manchouli, Irkutsk, or Urumchi, to carry mail and freight to Europe. The contract established the European-Asiatic Airmail Corporation, later called the Eurasia Aviation Corporation. This book is the story of that corporation and their airline.

The first half (80 pages) of the book details the formation, struggles, and eventual demise of the airline. It includes a chapter on the Sinkiang provisional airmail stamps. It is moderately well illustrated with photographs, schedules, and maps, most of which appear to have been taken directly from an earlier German edition of the book. There are a number of historical selections (“Eyewitness Accounts”) of material from Eurasian pilots and other personnel that make very interesting reading.

This is followed by three appendices listing Eurasian flight personnel, aircraft, and destination cities. A fourth appendix explains how to read dates in Chinese postmarks. There is also a bibliography citing a variety of books and journal articles about the airline and its airmail. This material will be useful to postal historians.

The second half (64 pages) is a catalog of Eurasia first flight covers. This is beautifully done with many covers and related items (airmail etiquettes, baggage labels) illustrated in color. The introduction of color is the biggest improvement that I saw, other than the translation, over the 1989 edition. No values are given but the items are rated on a relative point scale with values ranging from 50 points to 1200 points. There is a table of contents and a detailed subject index.

The first and second editions of this book were published in 1980 and 1989, respectively, in German. The current edition is further revised and updated and is the first in English. The quality of the publication is also much improved. Larry Sall, the coauthor on this edition, is the translator and is himself an aerophilatelist. The translation is idiomatic although there are a few rough spots where wording and sentence structure are a bit difficult to understand. Overall, though, this is an interesting and valuable addition to the world aerophilatelic literature. For the first time Anglophones have access to Peter Moeller’s detailed description of a little-known chapter in Chinese aviation history.

## DONATIONS

The library thrives on the enthusiasm and generosity of its members. The following have made donations to the library in the past two months. Thank you.

<p><b>K. Thomas Adkins</b>  <b>H. Carl Anderson</b>  <b>George Anema</b>  <b>Tim Bartshe</b>  <b>William Benjamin</b>  <b>Robert Blundell</b>  <b>Joe Crosby</b>  <b>Susan Dareau</b>  <b>Jack Dear</b>  <b>Danette Ellison</b>  <b>Sue Dunn</b>  <b>Bruce Elkin</b>  <b>Nolan Flowers, Jr.</b>  <b>Cheryl Ganz</b>  <b>Gary Gibson</b>  <b>Marian Goldsmith</b>  <b>Joan Grady</b>  <b>Bert Hanou</b></p>	<p><b>Richard W. Headstrom</b>  <b>Van Jennings</b>  <b>Dorothea Kaschube</b>  <b>Charles Klein</b>  <b>Jason Knezel</b>  <b>Charles LaBlonde</b>  <b>Lighthouse Stamp Society</b>  <b>Charles McClure</b>  <b>Daniel Meschter</b>  <b>James D. Mohrbacher</b>  <b>Joe Ptak</b>  <b>Scandinavian Col. Club</b>  <b>Travis Searls</b>  <b>USPS Publications</b>  <b>David Weisberg</b>  <b>Dr. Alan Whitney</b>  <b>Alan Warren</b></p>
--	--

## NEW MEMBERS

We extend a warm welcome to those who have joined the library in the past two months:

**Eric Pennington** – Littleton, CO  
 Collects US & British Commonwealth

**Joseph P. Jonas III**– Broomfield, CO

**Van Jennings** – Longmont, CO

**N. J. “Case” Hanou**,– Greenwood Village, CO  
 Collects Topicals: Ships and Horses

**Pam Bennett** – Aurora, CO -  
 Collects Pre-WW2 SE Asia, China, Japan

**Mats Roing** – Brighton, MA.  
 President, Scandinavian Collectors Club  
 Collects Sweden

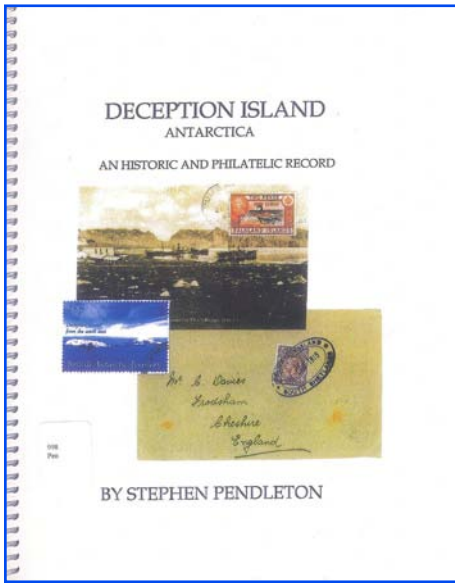
**Phillip M. Sager** - Baltimore, MD  
 Collects Organized Philatelic History

**Michael T. Smith** – Commerce, MI  
 Collects Denmark and Finland

[Visit The RMPL Web Page &  
 Online Catalog  
 www.rmpldenver.com](http://www.rmpldenver.com)

*Deception Island Antarctica - An Historic and Philatelic Record*

by Stephen Pendleton (2008 Edition). Reviewed by Ronald Hill



The author of this monograph travelled to the Antarctic twice, once personally exploring Deception Island, the only true “ghost town” in Antarctica.

Deception Island is part of the chain of islands known as the South Shetlands. The author states, “It was a rare adventure to step ashore at Whalers Bay, and to explore the ruins of the whaling station and the old British scientific base.” However he adds, “Philatelically, I don’t think I have discovered much in the way of original material.”

However this actually is a most comprehensive coverage of the history of the South Shetlands and the political intrigues over the years on this remote area. Included are maps of the South Shetland Island Group plus two detailed maps of Deception Island itself which help to understand all of this.

Because it is in monograph format (black & white photos) its 15 photos of the island and features reproduce poorly. Its many illustrated philatelic items include more than 80 special markings, 9 covers and numerous stamps. Hopefully the author will some day publish the book in color. But for the philatelist the book provides a veritable and definitive “checklist” of material from this area.

What makes this such an interesting read are the details of the many national bases in the area and their philatelic markings. One example is the base built by the Spanish Army on what was formerly Livingston Island and re-named Base Juan Carlos I, only 20-miles from Deception Island. In 1988 a refuge hut named Gabriel de Castilla was constructed on Deception Island by the Spanish only about a kilometer from the Argentine base. The book illustrates eleven special cancels from the Gabriel de Castilla base plus ten special “scientific” cachets related to the base as well as five cachets related to Spanish ships serving the area.

Argentina, Britain and Chile’s claims and counter-claims and uses of the island are covered in detail as well as illustrating many stamps and special markings by each of the countries.

One chapter in the book details the discovery of the island and the extensive whaling and seal hunting in the area and the role of the American, Nathaniel Palmer, and his early visits to the island. Palmer is illustrated on the US 1988 25c stamp of the Antarctic Explorers series.

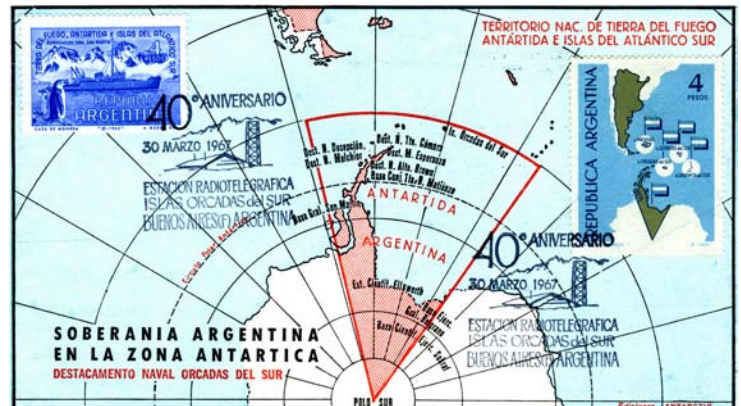
The book is spiral bound, in monograph format, but does have a full color cover. It is a very interesting read as well as an excellent and definitive work for anyone interested in geography, exploration and the colonization of remote areas of the world.

Chile and Argentina Polar Maps on Stamps



“Chilean Sovereignty in Antarctica” states this 1966 stamp that honors the fiftieth anniversary of the rescue of Shackleton’s crew from Elephant Island in the South Shetlands by a Chilean boat.

“Argentina Sovereignty in the Antarctic Zone” states this 1964 stamp and cover honoring the 60th anniversary of the 1904 Argentine naval base on the South Orkney Islands. The South Orkneys are also considered a part of the British Antarctic Territory (BAT).



# Donating: It's the Heart and Soul of the Library

by Ronald Hill



Some do it with hundreds of hours sorting books and magazines; some do with just being there when visitors need help. The library is open 6-days a week; 6-hours a day, because dozens of volunteers donate their time.

Others donate stamps or stamp collections which we sell at our two major auctions each year. Or stamps that are sold from the 5c "nickel" books, a few cents at a time. And, from time to time we get generous cash donations from members who pay a little extra when they pay their dues or, sometimes, just send us a check.

Right now is a special time as we are about to expand and double the size of the library. Many hours have already been put in by all-volunteer committees and board members. Hundreds of members have also pledged to contribute even more money and time to make this happen.

Photo: It takes many volunteers to get *Scribblings* into the mail. Behind the scenes the newsletter has to be printed, envelopes have to be stuffed and sealed, postage has to be applied. Then over 500 copies are taken to the Post Office. What you are reading today is the result of this generous donation of time and effort by our volunteers.

---

## Fundraising for a New Building

by Dave Weisberg, Chairman, Fund Raising Committee

As part of the process of acquiring the building adjacent to the RMPL, a Fund Raising Committee has been established.

It has two objectives.

First, to initially raise as much money as possible so as to minimize the size of the loan that will be needed to purchase the building.

Second, we will have on-going fundraising efforts that will facilitate paying off a loan as soon as possible and to pay for physical improvements to both buildings.

These funds will come from a number of different sources:

- Immediate contributions to supplement the current Building Fund in order to maximize the down payment and/or pledges from members to contribute over the next five years towards paying off the mortgage.
- The establishment of a program that facilitates members including the RMPL in their estate planning.
- Auction of donated material while recognizing that part of this income will continue to be needed for operating expenses.
- Soliciting grants from foundations for the Building Fund with emphasis on local and philatelic related organizations.
- Soliciting donations from major philatelic dealers and auction houses on the basis that the library promotes the hobby and has kept many individuals active as collectors and as customers for these firms.

- Soliciting donations from stamp clubs and national societies such as the Scandinavian Collectors Club.
- Other options also being considered.

Many RMPL members who approved investigating the acquisition of the 2048 S. Pontiac Way property during the recent vote also indicated that they would be willing to provide financial support. Some, but not all, of these individuals have been contacted and their commitments to date have been very gratifying. But we have a long way to go. If you have not already done so and would like to make a pledge towards the initial down payment or for later years to pay off the mortgage, please contact Dave Weisberg at 303-770-1728 or by email at [davideweisberg@comcast.net](mailto:davideweisberg@comcast.net).

At this time we are not asking for actual contribution unless you have a specific reason for wanting to make an early donation. Once we have a firm agreement to acquire the building, we will notify all those who made a commitment to submit payment to the RMPL attention Dasa Metzler. Dasa will record all contributions and the money will be deposited into a special Building Fund account. Please note that all contributions to the Building Fund are tax deductible.

YOU CAN HELP AND YOUR GENEROSITY IS  
APPRECIATED

# The “Beetle” Unveiled: Three New Stamps Issued For The 1939 Berlin Auto Show

by Gary Gibson



Figure 1

In late 1933, Adolph Hitler met with Ferdinand Porsche to discuss Hitler’s idea of a “volkwagen” or “people’s car”. The idea was a car that could carry five people, cruise up to 62 mph, with fuel efficiency of 33 mpg, and to cost only 1,000 Reich Marks.

The auto industry dismissed the idea of a car for the masses at the time, however the next year, 1934, they were ordered to make it happen, shortly after Hitler’s election as Chancellor. Still reluctant, the industry heard Hitler state angrily at the 1937 Berlin Auto Show, “either they produce or they will go out of business”. The foot dragging came to a halt. In fact, the industry voted the “volkwagen” the “Car of the Century”.

The 1939 *International Automobile & Motorcycle Exhibition* (Official Poster, Figure 1) was held in Berlin. February 17 through March 5, 1939. It was intended to show the German auto industry at its peak before World War 2. The Exhibition was held at the *Kaiserdamm/ Funkturm* exhibit grounds and was expected to be attended by 10,000 visitors from around the world.

Three new stamps (Figure 2) were issued specifically for the 1939 Auto Exhibition. They are the 25 pf featuring the new



Figure 2

*Kraft durch Freude* (Kdf car), or “Volkswagen”; a 12 pf featuring world speed record setting Mercedes-Benz and Auto Union racing cars.; and a 6 pf that pictures the first Mercedes-Benz motor car. The new stamps were cancelled on the first day of the show, February 17, 1939 on a special sheet sponsored by Dresdner Bank.

From May 18th to July 23, the same year (1939) the championship Nürburgring auto race in Nürburg, Germany, featured a special overprinting of the three stamps which read, “Nürburgring-Rennen”.

The stamps (Figure 3) were cancelled with an official cancel on the first day of the race. Today the



Figure 3

overprints are valued at three to five times that of the original stamps.

The Nürburgring race track was built from 1925 to 1927 in the Eifel mountains around the village of Nürburg. The complete track was 17.563 miles long with 174 bends and varied from 26 to 39 feet in average width.

The 1939 race was the last year the track was used in its original complete layout. (Figure 4)

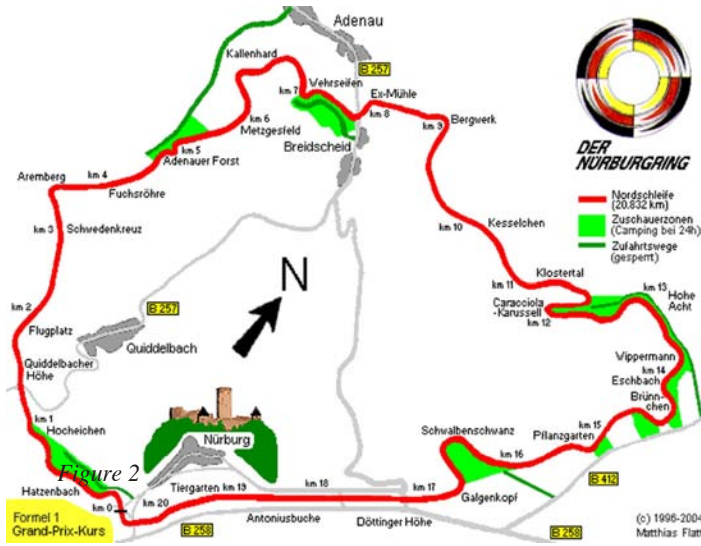


Figure 4

## Bulk Lots Auction Thursday, November 12th last year's auction set new record



Mark the date on your calendar now. This annual event is a major fundraiser for the library. Volunteers are already working on this material and this year should be another record year

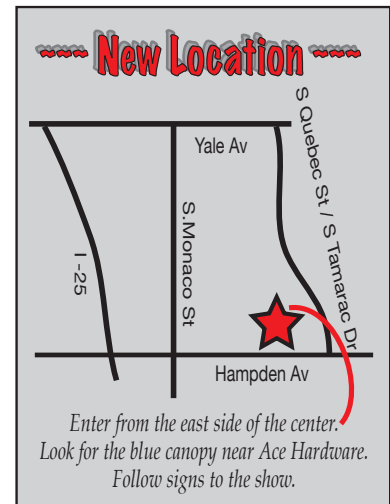
**APEX 2009**

**SEPTEMBER 12 - 13, 2009**

~ ~ COME JOIN US ~ ~  
~ NEW LOCATION ~  
~ NEW SHOW DATES ~

**TAMARAC SQUARE SHOPPING CENTER**  
7777 EAST HAMPDEN AVENUE  
HAMPDEN AV AT TAMARAC ST

1-25/Hampden Av. Exit - East 2 miles  
~ ~ Enter on east side of center near Ace Hardware ~ ~  
**SATURDAY, SEPT. 12 - 10:00 AM - 5:00 PM**  
**SUNDAY, SEPT. 13 - 10:00 AM - 4:00 PM**



# POSTAGE STAMP SHOW

Information From: Aurora Stamp Club, P.O. Box 31931, Aurora, CO 80011 303.341.9997  
Sergio Lugo - lugopspe@msn.com



## SECOND SATURDAY PROGRAMS AT THE LIBRARY

Second Saturday programs are sponsored by the library and attract a friendly group of folks who are interested in a specific subject or who are interested in learning more about an area of philately that may be new to them. Contact Jim Kilbane if you would like to present a program.

e-mail: [aurora\\_80017@yahoo.com](mailto:aurora_80017@yahoo.com)

**The programs begin at 9:00 AM and are over by 10:00 AM.**

**Doughnuts and coffee are complimentary and all are welcome.**

### SEPTEMBER 12

*The Internet - A Useful Philatelic Tool*  
by Tim Heins



Virtually all our homes have a computer with access to the internet. The internet hosts over 27,000 websites related to stamp collecting. The internet provides stamp collectors with a tool which can greatly increase our enjoyment of our hobby. This program will be a live, on line tour of various websites which may be of interest to collectors. Websites which will be viewed will include: libraries and museums, stamp clubs and organizations, stamp sales (auction and stores), sales of philatelic supplies, blogs and discussion groups. There will also be time for exploring websites suggested by attendees.

### OCTOBER 10

*The Gelber Hund - First German Air Mail*  
by Gary Gibson



Special flights of the *Gelber Hund* carrying mail were the brainchild of Duchess Eleonore and the Grand Duke Ernst Ludwig von Hesse. Special cards and special semi-official stamps were carried as a fund raiser to five cities by the aircraft in June, 1912. Gary will present the complete story in this Second Saturday program.

### **USS Colorado Chapter, USCS, Presents a Program on the USS Denver and USS Colorado Saturday, September 12, 11:30 am at the RMPL**

The local chapter of the Universal Ship Cancellation Society (USCS) will meet at the RMPL library at 11:30 am shortly after this month's 2nd Saturday program. If you are here for the RMPL program, stick around you may enjoy this presentation.

Spencer Meister, a native of Denver, will share the experiences of his father George E. Meister, who was Cochairman and Committee Member for the commissioning of the *USS Denver* LPD-9. Spencer will discuss his father's personal stories related to the commissioning and bring artifacts, photos and the "Ship's Plank" ownership given to his father by Captain Jenkins, first commander of the (third) *USS Denver* in history.

The second speaker is Commander Len Deemer, whose active duty included being a nuclear weapons delivery Bombardier Navigator deployed aboard the *USS Ranger*.

While in the Tonkin Gulf, Deemer was awarded the Air Medal for meritorious achievement in active combat aerial flight. His second tour included electronic warfare and was assigned to the Anti-Air-Warfare Center in Guantanamo Bay, Cuba as the centers operations officer.



Two years after serving in Guantanamo, Cdr. Deemer left active duty for the Navy Reserve and a civilian position with the City of Lakewood, CO. His affiliation with the Naval Air Reserve at Buckley in 1971 fostered a relationship with local members of the Navy League, and the Naval Sea Cadet youth training program. Members included George Meister who had participated as an Officer and Council Representative to the two Denver Sea Cadet Units and shared with Cdr. Deemer the Navy League's support of the *USS Denver* LPD-9, and the importance of the *USS Colorado* BB-45 and its role during World War 2.



## In The Loupe - finding the interesting & unusual

For those who make your own web pages here is an interesting utility that has its own magnifying glass that enlarges any image below it. Of course it does nothing practical, but it makes an interesting photorealistic effect for a philatelic web page (with a stamp image under it). It is interactive and the glass can be moved around over the image magnifying whatever is below it.

Information at : <http://www.netzgesta.de/loupe>

## OK, So Maybe They Are Not Real...



A slick promotion for Willie's new album, *Willie and the Wheel*. The album package includes a "souvenir sheet" of the "stamps", thirteen (13) "maxi-cards" that look like old fashioned concert posters. Plus, of course, Willie Nelson's CD Album with more than a dozen songs.

## New Topical Checklist Started Polar Maps-On-Stamps Featured

In the field of Cartophilately (maps-on-stamps) a new specialized sub-division is being created with the publication of a checklist of worldwide stamps featuring maps of the polar regions.



The stamp shown here, for example, is the new Greenland stamp honoring Matthew Henson who accompanied Robert Peary on the expedition to the North Pole. For information on the new checklist or to submit lists of your own, contact Ronald Hill, [hillwright@mac.com](mailto:hillwright@mac.com) or 303-241-5409.

## APS Offers Two New Online Stamp Collecting Courses



Beginning September 21, 2009, stamp collectors will have the opportunity to continue their philatelic education online with two new courses.

**Keys to Exhibiting** taught by Janet Klug, will be presented in six lessons over a ten-week period. The course offers individual guidance on creating an exhibit, preparing for your first show, deciding where to show, understanding judge's critiques, and more.

The course is designed both for beginners and intermediate exhibitors offering both "nuts and bolts" fundamentals as well as learning how to polish their existing presentations.

The cost is \$75 for APS members; \$105 for non-members. The 150 page APS Manual of Philatelic Judging is required reading and can be purchased from the APS online: [www.stamp.org](http://www.stamp.org) (Shop Online).

**Basic Stamp Collecting**, taught by Ada Prill, is a four-session practical beginners course designed to introduce newcomers to the hobby. It covers basic "how-to's" of stamp collecting, such as where to get stamps, how to store them, and how to figure what they're worth. Students will all receive a beginner's kit including a Basic Stamp Collecting Workbook. The cost is \$55 for APS members; \$75 for non-members.

**REGISTRATION DEADLINE September 14, 2009**  
Call APS at 814-933-3803, ext. 239

Visit The RMPL Web Page & Online Catalog  
[www.rmpldenver.com](http://www.rmpldenver.com)



## *What's Happening at the RMPL...*

*"Come and Enjoy the Activities"*

Monday, Tuesday, Wednesday, Friday, Saturday 10:00 AM - 4:00 PM  
Thursday 2:00 - 8:00 PM. Closed Sundays and Holidays. Phone: 303.759.9921

**Meeting times and places sometime change. It is best to call the library or the club to confirm the place and time. A calendar of reserved club times is kept by Don Beuthel at the library. Clubs should check the calendar regularly and notify Don (303-755-9328) of any changes or updates.**

### **SEPTEMBER 2009**

- September 2** - Meeting-Aurora Stamp Club.  
6:30 PM trading, 7:30 PM meeting/program
- September 5-7** - Closed for Labor Day Holiday
- September 9** - Meeting - 7:00 PM  
Denver Germany Stmp Club
- September 12** - 9:00 AM  
**Second Saturday at the RMPL**  
Program by Tim Heins  
*The Internet - A Useful Philatelic Tool*
- September 12** - Meeting - 10:00 AM  
Mexico/Latin America Study Group
- September 12** - Meeting - 11:30 AM  
Universal Ship Cancellation Society  
U.S.S. Colorado Chapter  
Program: *USS Denver* and *USS Colorado*
- September 12 (APEX)** - Meeting - 9:30 AM  
Metro Denver Young Stamp Collectors Club
- September 12 (APEX)** - Meeting 10:00 AM  
Scandinavian Collectors Club
- September 12 (APEX)** - Meeting 2:00 PM  
TOPIC, Topical Collectors in Colorado
- September 22** - Meeting - 7:30 PM  
Rocky Mountain Stamp Show Committee
- September 23** - Meeting - 7:30 PM  
Israel Stamp Club

### **OCTOBER 2009**

- October 3** - Meeting 10:00 AM  
Scandinavian Collectors Club
- October 3** - Meeting 2:00 PM  
TOPIC, Topical Collectors in Colorado
- October 7** - Meeting - Aurora Stamp Club  
6:30 PM Trading; 7:30 PM meeting/program
- October 10** - 9:00 AM  
**Second Saturday at the RMPL**  
Program by Gary Gibson  
*"Gelber Hund" - Germany's First Air Mail*
- October 10** - Meeting 10:00 AM  
Mexico/Latin America Study Group
- October 10** - Meeting 11:30AM-  
Rocky Mountain Aerophilatelists
- October 14** - Meeting - 1:00 PM  
Denver Germany Stamp Club
- October 17** - Meeting - 9:30 AM - Noon  
Metro Denver Young Stamp Collectors Club
- October 24** - Meeting - 9:30  
Postmark Collectors Club
- October 24** - Meeting - 1:00  
Colorado Postal History Society
- October 28** - Meeting - 7:30 PM  
Israel Stamp Club

*Scribblings* is published bimonthly by the Rocky Mountain Philatelic Library, Editor, Ronald Hill, 2038 S Pontiac Way, Denver, CO 80224. The Rocky Mountain Philatelic Library is a chartered Colorado nonprofit corporation and an IRS designated 501 (c)3 charitable organization. Membership subscriptions over that for the regular membership, and donations of appropriate philatelic materials, are deductible for U.S. income tax purposes.

#### **RMPL BOARD OF DIRECTORS**

President: Sergio Lugo - Operations Manager: Don Beuthel - Vice-President: Jim Kilbane  
Corresponding Secretary: Don Dhonau - Recording Secretary: Paul Lee - Treasurer: Bob Blatherwick  
Directors: Jan Marie Belle - Roger Cichorz - Dalene Thomas - David Weisberg. Emeriti: James L. Ozment and John H. Willard