

Scribblings

...from the Rocky Mountain Philatelic Library



Ellengail Beuthel, Librarian...

Vol. 17 - No. 2
www.rmpldenver.org

2038 South Pontiac Way, Denver, CO 80224
303.759.9921

March-April 2009
Email - rmpl@qwestoffice.net

IN THIS ISSUE

Bob Brown:
In Memoriam.....1-2-3
The RMPL Card Catalog is
Now Online.....1, 4-5
Election Results
New Board.....2-3,6
BuckingTheTrend.....7



Peanut Butter From
Heaven.....8-9
What's New on the
Shelves.....10-11
ROMPEX Stamp Show..12
BANANAPEX
Stamp Show.....12
APS Exhibit Seminar.....12
Donations.....13
New Members13
News & Events13



Second Saturday
Programs.....14
Closed Albums.....14
Membership
Application.....15
What's Happening
Calendar ..Back Cover

IN MEMORIAM



Bob Brown - 1939-2009

See inside, pages 2-3

The RMPL Card Catalog is Now Online

by John Bloor

Most of us grew up with the idea that a library card catalog was just that, a catalog of the holdings on a set of cards in a file drawer. That's how the RMPL started, back in 1993. Now, the word "card" is often omitted and library catalogs have become digital electronic lists or databases of the holdings on computers. Each record in the digital catalog corresponds to a card in the card catalog. The pieces of information (author, title, publisher, key word list, etc.) on the cards have become fields in the digital records. Besides being much more compact, digitalization of the library catalog has made searching for information much easier and faster. I can attest to this, having done many tedious searches myself through card catalogs.

A computerized library catalog is a collection of organized information that needs an interface or "front end" to be useable. Typically, an interface allows the user to search the database, identify records of interest, and view the records. This is how you and I look up books on the computer at the RMPL. Now, through a new interface written by Travis Searls, an RMPL volunteer, we can do the same thing from outside the library, in our homes or anywhere there is a computer with access to the internet. The RMPL catalog is now on the web!

Continued on pages 4,5

Robert Brown: 1939-2009

RMPL'S Chief Cartographic Archivist

Or, that's the way Bob used to describe himself to the library and others, devilishly anticipating that they couldn't quite let it roll off their tongues as easily as he!

Our dear friend, and longtime RMPL volunteer and member of the board, is now mapping pathways elsewhere. After a fast developing brain tumor was detected a few months ago, Bob succumbed to that tumor on February 13, 2009.

Born in Portland, Oregon in 1939, he later grew up in Denver and attended Wheat Ridge High. His father worked for the Forest Service and when transferred to Alaska in 1956, the family moved there and Bob graduated from Ketchikan High School the next year. Bob joined the US Navy shortly after, serving as a radioman on the USS Norton Sound and the aircraft carrier U.S.S. Yorktown. His naval service was of tremendous significance to him. This past year he travelled back east for the reunion of the thousands of men who had served aboard the USS Yorktown.

Following his naval service, Bob attended Everett Junior College in Tacoma, Washington, and the University of Alaska in Fairbanks where he was graduated with a degree in civil engineering.

He first worked for the US Geodetic Survey and then joined the Colorado Department of Transportation in 1971 in Denver until his retirement 28 years later. While at CDOT in a variety of capacities, including



Bob Brown (left) - poring over one of the many historical maps in the RMPL collection

the Cartographic (map) Section - which he thoroughly enjoyed and which he turned into one of his stamp collecting passions.

We don't know when Bob began his philatelic pursuits, but by the time we knew him at RMPL he had become an active member of the stamp collecting community in the Denver metro area. His special interests included Vatican, Israel, and explorers and maps on stamps. General interests spanned the length and breath of the planet - which he thoroughly loved as a consequence of his cartographic interests. He enjoyed the many varied folks he ran across in the hobby.

The Election Results Are In New Officers and Board Take Office

by Jim Kilbane, President Pro Tem

I will open with a note of sadness. Bob Brown passed away on February 13th from the results of a brain tumor. Bob was our Corresponding Secretary. He was also one of the library's first volunteers. He spent hundreds of hours working on the map room. He bought many maps for our collection. He also spent many hours drawing lines on maps to show various routes. Bob purchased the RMPL hats and gave each board member one with the rest being sold for the benefit of the library. He was also a founding member of the local group of the American Topical Society called TOPical Philatelists In Colorado. Bob will be missed by all.

The election results are in. We had 207 ballots. Some did not vote for every position, a couple ballots were blank.

The results of the election are:

President:
Serigo Lugo

Treasurer:
Bob Blatherwick

Operations Manager:
Don Beuthel

Board of Directors

Vice-President:
Jim Kilbane

Dalene Thomas

David Weisberg

Recording Secretary:
Paul Lee

Roger Cichorz

Jan Marie Belle

Corresponding Secretary:
Don Dhonau

A large thank you to all who showed your interest in the library by running for office and voting.

Bob was one of the early members of the RMPL (member # 28) and contributed much to the success that the library has enjoyed. He was one of the first front desk volunteers, serving in that capacity at all three locations of the library. Eventually, Bob's unselfish character involved him in other aspects of the library's work, including stewardship of the map collections that had been originally assembled by Bill Dunn.

Elected to the RMPL Board in 2002, Bob stepped to the plate on a variety of occasions - some of you will recall his avid promotion of the RMPL baseball caps that he championed. Bob developed a detailed organization of the map collection that will be continued as the maps have now been located into a larger area in the Western History room.

Many a day it was that one could observe Bob carefully working with an ancient map, carefully affixing tape to acid free laminates to ensure that a pocket of air would remain between the sheets - thereby not damaging the map in any way.

He also served in several capacities with local philatelic organizations, including T.O.P.I.C (TOPical Philatelists In Colorado). He served as its president for several years, and showed numerous programs at the RMPL, including his wonderful French Southern and Antarctic Territories program.

His tenure on the board was completed as its corresponding secretary, from whom many of us received the acknowledgement and gratitude of the RMPL in the

form of a letter thanking us for our generous donations. Yes, that was Bob signing and generating all those letters over the years.

In addition to his volunteer work at the library, Bob was heavily committed to his volunteer work at ROMPEX, the Rocky Mountain Stamp Show, Colorado Railroad Museum and the Wings Over the Rockies Museum.

Bob is survived by two brothers, Jim and Dave. Both remember Bob as a solitary individual who cherished his aloneness along with his great sense of humor. In fulfillment of his wishes, his brothers, as well as Bob's long time friend, Judith Lamb, have donated many of Bob's collections to the RMPL, and have forwarded his specialized collections of Israel, maps and Vatican to specialist societies for their use as reference collections.

Memorial services were held on Saturday, February 21st. A large contingent of fellow philatelists were in attendance.

In closing, this is our last kudo to Bob for his dedication to the philatelic interests of many Coloradans and for his wry sense of humor. His good natured spirit was always displayed, especially to myself and those RMPL volunteers who had failed penmanship classes in our youth, causing Bob no end of consternation in trying to decipher our handwriting of the names of donors when writing thank you letters.

Sergio Lugo, President-elect, RMPL

At the last board meeting held on January 15th 2009, a Technology Committee was formed. This committee will be responsible for updating and maintaining the computers, copiers and other equipment used by the library. The committee is led by Roger Rydberg. The first accomplishment by the committee was the Online Catalog of RMPL books. This was created by Travis Searls. Travis spent many hours developing the catalog. Go to the RMPL website at www.rmpldenver.org and try it out for yourself .

On February 15th (see Page 6) the new board had a potluck at the library along with previous board members to get to know how the board and library work. Also present were members of various committees. I believe all present came away with a better understanding and appreciation of how the library works. The new board and officers will officially take over its duties on March 19 at the next Board Meeting. The board meetings are open to anyone interested in attending.

If you have any suggestions on improving the library contact anyone on the board.

RMPL Volunteers Sought

Periodically, the RMPL finds itself reaching out to the membership to step up and support the library in filling new and different volunteer activities that have developed. Please consider assisting the library with your services by contacting Director of Operations, Don Beuthel at the library. The following are some of the areas needed:

DIGITIZING ASSISTANT:

We are looking into the process of digital preservation of our valuable, older documents and periodicals, with a view towards getting those periodicals on the RMPL's new on-line catalog in the future. We have one volunteer now who is learning this work, but he also shares this with other volunteer duties. We would like to have a second volunteer to work together as a digitizing team. This will focus on digitizing old periodicals and getting them into the RMPL's periodical database. The job is anticipated to take as much as 2 years, in 3 hour shifts, working one day week.

Continued on page 5

The RMPL Card Catalog is Now Online

Continued from page one

While I was writing this story, I received a call from a library member wanting to know whether we had a particular book. I looked it up and told him that the library did have it. He could have saved a call and gotten additional information by searching in the online catalog. Now that you know about the catalogue, that's what you can do the next time that you need a book and want to know if you can find it at the RMPL. Eventually, the periodicals will also be listed but for now that's an ongoing project.

Out-of-town members and other philatelists who don't live near the library can also search the catalogue. It is expected that the library will be particularly useful to this group and that online availability of the catalog will increase national and worldwide awareness of the library. For now, checkout can only be done by physically coming to the library.

The possibility of checkout by mail is being studied.

The RMPL has now joined the small group of philatelic libraries with online catalogs. At this time, the RMPL web catalog is in beta testing, that is, we want users like you and me to report any problems with the catalog and to make suggestions about how it could be improved. Email your comments to:

rmpl@qwestoffice.net

There also has been discussion of creating a union catalog in conjunction with the APRL and other philatelic libraries. This has been delayed and it was decided to proceed unilaterally with putting the RMPL catalog online. This does not affect formation of a union catalog in the future. For now, though, the RMPL remains a leader among philatelic libraries, proceeding vigorously into the electronic age.

The screenshot shows the website for the Rocky Mountain Philatelic Library, titled "The Stamp Collecting Center of the Rocky Mountain West". The search interface includes a navigation menu on the left with links to Home, Card Catalog, Take a Tour, Officers, Archives, Periodical Listing, Membership Info, Auctions, Library Calendar, Clubs, Dealers, Shows, Links, and Email Us. Below the menu is a "Hours of Operation" table:

Hours of Operation	
Monday	10am-4pm
Tuesday	10am-4pm
Wednesday	10am-4pm
Thursday	2pm-8pm
Friday	10am-4pm

The main search area is titled "Enter search terms in at least one of the fields below (Use * for wildcard)". It contains four search fields: "Keyword:" with the text "Australia" and a subtext "Search for these words in all fields."; "Title:" with a subtext "Search for these words in the title."; "Author:" with a subtext "Search by author."; and "Subject:" with a subtext "Search by subject.". Below these fields is a "Limit results by (optional)" section with a "Medium:" dropdown menu set to "Book" and a subtext "Search only in select medium.".

Here is a sample (figure 1) to show just how easy it is. After typing in the word <Australia> in the Keyword box you go to <SEARCH> and you receive a list of all books related to Australia in the library.

On the next page (figure 2) you see a sample copy of a part of that exact list.

Figure 1

How to Use the Online Card Catalog A Brief Introduction

To get started, go to the RMPL homepage at www.rmpldenver.org.

Click on "Card Catalog" and the search page will appear. Type your search word or words into one of the fields and click on the <SEARCH> button at the bottom of the page. If the library has one or more books corresponding to the search terms, a list of the relevant records (titles), in abbreviated form, will appear. To look at the full record, double click on the call number (in blue or lavender) at the top of the short record. The <HELP> button at the bottom of the page provides

useful information about how each of the search fields works (i.e. which fields in each record are searched, how to use wild cards, etc.).

The "Limit Search" part of the screen, at the bottom, allows one to choose whether or not to search specific types of media and the holdings within the Western History collection. Default choices are "All Media" and to include the Western History collection in the search. To change the media choice, click on the arrowhead at the right side of the box and select from the menu that appears. To exclude the books in the Western History Collection from the search, turn off the green checkmark by clicking on it.

Continued next page

How to Use the Online Card Catalog

Continued

Search Results - 43 Items found

Contact rmpl@qwestoffice.net with corrections

[Back](#) [Help](#) [New Search](#)

Call Number: [994 Cox](#)
Title: South Australia : the squared circle cancellations.
Author: Cox, Donald G.
Published: [1972?]

Call Number: [383.144 Air 1991 v.2](#)
Title: Air transport label catalog : Volume 2, Great Britain, Ireland, Australia, New Zealand.
Author:
Published: 1991.

Call Number: [909 Har](#)
Title: All world auction featuring the 'Kuching' collection of Sarawak, also Rhodesia double heads, Cape of Good Hope, Western Australia, German Colonies, Seppelins, and Saudi Arabia...
Author: Harmers
Published: 2006.

Call Number: [910.3 Geo](#)
Title: Australia, New Zealand and Oceania : gazetteer supplement ; official standard names.
Author: Geographic Names Division, Army Map Service.|United States Board on Geographic Names.
Published: 1972.

Call Number: [769.56 Bil v.21 1954](#)
Title: Billig's philatelic handbook.
Author:
Published: c1954.

Call Number: [769.56 Bil v.41](#)
Title: Billig's philatelic handbook.|The Encyclopaedia of British Empire postage stamps, 1788-1952 : volume 4, part 1, The Empire in Australasia : New South Wales, Queensland, South Australia, Tasmania.|Irish postal history : Dublin penny post.

There are other useful buttons located at the bottoms of the screens. Not all buttons appear with all screens. The <CLEAR> button erases information from all of the boxes on the search screen.

The <BACK> button moves you back one screen (you can also do this with the "back" button on your web browser). The <NEW SEARCH> button takes you back to the search screen and erases all of the information in the boxes.

Try out the catalog. There's nothing that you can do to damage it. Let us know what you do and don't like about it. Although we always like to see you at the library, search at home for what you want and save yourself a trip!

Search Results (left) show 43 Results. Above are shown the first 6 of those actual 43 books in the library on the subject of Australia. Shown is the Call Number of the book as well as the Title, Author and Date Published.

Figure 2

RMPL Volunteers Sought *Continued from page 3*

CLUB ARCHIVIST: This is a new activity, focused on maintaining archives in the Library's possession from Colorado stamp clubs and stamp shows. We have started this program and would like to have a second volunteer.

PERIODICALS UPDATER:

A second volunteer is needed to assist in this work. We have been in the process of stamping RMPL periodicals for the past year. The task involves two responsibilities: (1) stamping periodicals with a rubber stamp as they are recorded into the database and (2) completing labels for the boxes into which the periodicals are placed. We are, at present, half way through the alphabet, up to L-M, but anticipate that another year of work will be needed in two or three 3-hour shifts per month.

FRONT DESK PERSONNEL:

The face of the library! Volunteer daily schedules are arranged with Don for three hour time slots each month and throughout the year. A friendly and helpful disposition is essential. Three are needed now to fill various time slots. Training provided by Don for as many as 4 volunteers, in three hour shifts per week, as needed.

GENERAL SHELF WORK

We are seeking two individuals to help with shelf organizing. This is a general review of the shelves beginning in April and expect it to take 2-weeks and about 20-hours per week. Duties will be helping to get all books in their proper places and some understanding of the Dewey decimal file system is needed. Training will be provided by Don and Ellengail Beuthel.

New Board and Officers Meet For An Informal Pot Luck at RMPL



On February 15 the new board members and officers met for an informal pot luck luncheon at the RMPL to discuss the state of the library and to go over recent new developments, such as the online card catalog and new committee reports. Librarian Ellengail Beuthel also presented a review of the library operations.

Retiring President Ron Mitchell received a gift in recognition of his outstanding service to the library, shown here presented by board member, Dalene Thomas.

See pages 2 & 3 for a complete report on the new officers and members of the library's Board of Directors.

Bucking The Trend

Views from North Carolina

by Gene Zhiss, member RMPL and Charlotte Philatelic Society

Even a casual reader of philatelic newspapers and magazines is aware of the fact that membership in stamp clubs across the country is declining and that there is an ongoing debate about what can be done to reverse the downward trend.

In Charlotte, North Carolina, we are fortunate that our club, the Charlotte Philatelic Society, continues to grow. We have about 50 members and every month about 40 of the members attend our meetings.

Our format is quite simple. We meet on the first Sunday of each month. The doors open at about 1 pm and the meeting starts officially at 2 pm. We have a very short informal business meeting followed by a presentation by a club member. A different member of the club brings refreshments. Every month we have a club auction. The consignor gets to keep the entire amount from the sale of his items. The club uses its treasury to purchase collections which are broken down and catalogued by club members and are also sold in the auctions. The auctions have proven to be very popular and club attendance has grown since we first introduced auctions as a regular feature.

We plan our programs a year in advance. Typically a member presents material from his or her collection. It is interesting to see how broad collecting interests are, even in a small group of this size. Once or twice we have had five members bring their favorite stamp or cover and each spends a few minutes describing the item and telling the group why it is important to them.

Recently, we had five members each bringing one or two items of philatelic literature with a request that they talk about each for no more than three or four minutes. They could bring a book about a single stamp or group of stamps, a monograph, specialty catalog, society publication, pamphlet or auction catalog. The underlying thought was that literature is a very important part of our hobby and the more that we learned about our collecting interests through reading, the greater appreciation and enjoyment we would get from our hobby.



At the last meeting of the Charlotte Philatelic Society I introduced them to the Rocky Mountain Philatelic Library. I passed a copy of the latest issue of "Scribblings" around the room and explained how they could get more information, including an application to join online. This picture includes me (Gene Zhiss) standing in front of the group with the (January-February) newsletter.

Again, the broad range of philatelic interests, was reflected in the books that the members brought to discuss. One member, a collector of Canadian stamps and postal history, brought the *BNA Topics*, the journal of BNAPS, The Society for Canadian Philately. Another brought a copy of the *Sanabria Airmail Catalogue* and an Iranian catalogue. Another brought the *Encyclopedia of U.S. Stamp Collecting* and *Fundamentals of Philately*. Another brought *Michel's Middle East Catalogue* (Naher Osten) and discussed the "sand dunes" countries. The same individual brought *Philips' American Stampless Cover Catalog*. Another brought specialized catalogues of Australia and New Zealand.

Each spoke about his or her philatelic library and I believe that most of our members came away realizing how important research and philatelic literature is to our hobby and how it adds enjoyment to our areas of collecting interest. I believe that they also realized that philately has a huge body of literature, perhaps larger than any other hobby.

It occurred to me, that philatelic libraries are at least as important to the hobby as the books themselves. Please find enclosed my application for membership to the Rocky Mountain Philatelic Library. I hope that one day soon I will have the pleasure of visiting your fine library.

Peanut Butter From Heaven

– and other stories uncovered in a box of covers at the RMPL

by Ronald Hill.

with special thanks to Tonny Van Loij and Bert and Case Hanou

While looking through a box of “foreign covers” at the RMPL, volunteer Tonny Van Loij found a group of covers addressed to “Operation Chowhound Veterans”. Remembering his homeland as a child during World War 2 in the areas near Antwerp, Belgium, Tonny investigated further and uncovered events in that area during the terrible winter of 1944-1945 in Belgium and Holland.

Near the end of World War II, food supplies became increasingly scarce in the Netherlands. After the landing of the Allied Forces on D-Day, conditions grew worse in the Nazi occupied Netherlands. The Allies were able to liberate the southern part of the country, but their liberation efforts came to a halt when their attempt to gain control of the bridge across the Rhine at Arnhem, failed. The exiled Dutch government and the resistance movement appealed for a railway strike, starting September 1944, to further the Allied liberation efforts. The German administration retaliated by placing an embargo on all food transports to the western Netherlands.

Areas around Antwerp and Rotterdam were vital to the Allied war effort. On the little island of Walcheren, in Holland, on the estuary of the Schelde River leading to the port of Antwerp, in the town of Middelburg, lived a little girl named Case. She lived only about 20km from where Tonny Van Loij lived across the border in Belgium. Middelburg was totally destroyed on May 10, 1940, the same day that the city of Rotterdam was destroyed by German bombardment. People in Middelburg struggled through the war, mostly living in cellars of the bombed houses. But the winter of 1944-1945 was to be the worst.

As the story unfolds, the covers discovered by Tonny Van Loij led to conversations with Bert and Case Hanou, also volunteers at the RMPL. Bert, as a child, was taken from his home in Holland and imprisoned in a German work camp in Germany. His wife, Case, now relates the events in Middelburg in September 1944, before being liberated. “Food was not available; my dad had rigged up a bicycle to provide light with dynamo of the bike. We dug earthworms, squeezed

and chopped them and made patties, terrible smell and taste, but they were full of protein”.

“Then one day in September (1944) an Allied plane flew over the island, braving the German anti-aircraft defenses, and dropped numerous food packages. These contained tins of Crisco, cocoa, crackers, Cream-of-Wheat and peanut butter (in glass jars). The peanut butter was scraped up and we just spit out the broken glass”.

On November 2, 1944 the town of Middelburg was liberated by British forces, but the war raged on and, the next month, the Germans launched their counter-offensive in the Ardennes of Belgium, referred to as “The Battle of the Bulge”. This offensive was intended to split the British and American forces and thus hoping to force an early truce with the Allies before the Russians reached Berlin. It failed and the Americans finally regained all territory lost in the “Bulge” by the end of January, 1945, while also suffering the worst battle casualties of the war during one of the most severe winters in history.

By springtime 1945. Holland was even more desperate and Germany was nearly defeated. Russia had inflicted almost a million casualties on the Axis armies while regaining their lost territories and were moving on Berlin. In April the Allies negotiated a temporary “truce agreement” with Germany to allow humanitarian flights of food to certain areas of occupied Holland.. This was later to be called “Operation Manna” and “Operation Chowhound”.

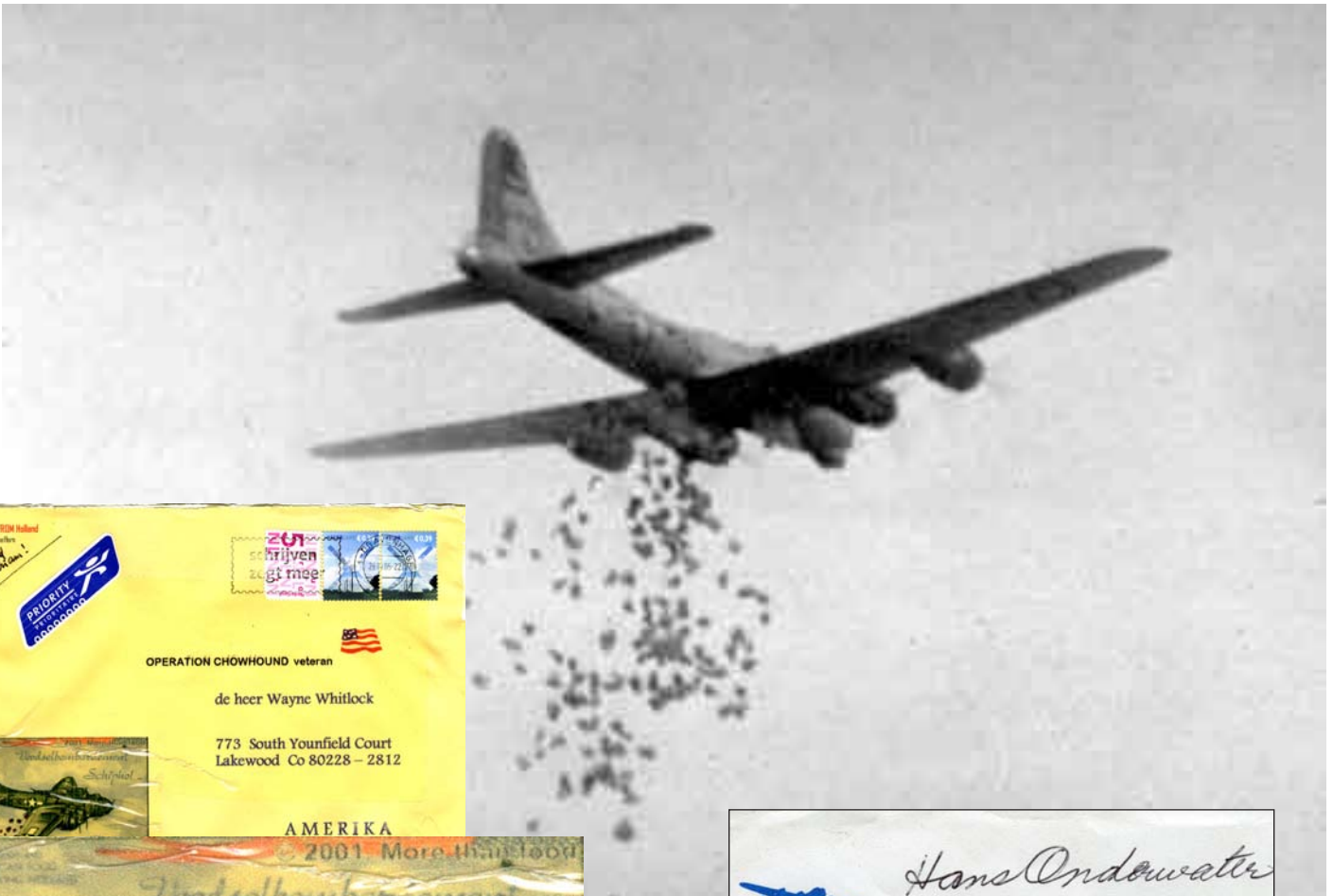
Drop zones were first marked by flights of British de Havilland “Mosquito” fighter bombers and followed on April 29 with British “Lancaster” bombers filled with food. Two days later ten bomb groups of the US Third Air Division flying B-17 bombers also began food drops.

Over the past ten years many of the veterans of Operation Chowhound in the US, England and Holland have met and corresponded. Holland also issued a stamp (see photos) honoring the food drops.

Opposite page:

Some of the covers found in the RMPL box by Tonny Van Loij. Stamps and cachets also from those covers.

Pre-war map of the areas of Rotterdam and Antwerp and the Rhine and Schelde rivers (1937).



RAND McNALLY
POPULAR MAP OF
NETHERLANDS
BELGIUM
AND LUXEMBOURG
SCALE 1:1,000,000
1 inch = 32.4 Statute Miles
1 Centimeter = 16.1 Kilometers
Statute Miles
Kilometers



WHAT'S NEW ON THE SHELVES?

AFRICA

A Tour Through South Africa, DVD. by Martie Vos

ASIA

Indian Inland Letter Cards, Advertisements & Slogans 2 Vols., by Shri Kotadla and Shri Gandhi, 2000, 71 p.

The Postage Stamps and Postal History of Tibet, Collectors Club of New York, 1958, 80 p.

Mauritius, No.4, Maritime Mail, 1815-1868, part 1, Indian Ocean Study Guide, 1987, 56 p.

Mauritius, No.5, Maritime Mail, 1815-1868, part 2, Indian Ocean Study Guide, 1988, 51 ppg.

People's Republic of China Post

The Stamps of the People's Republic of China Special and Commemorative Stamp Album – 1988, 1989, 18 p.

The Stamps of the People's Republic of China Special and Commemorative Stamp Album – 1989, 1990, 18 p.

AUSTRALASIA & OCEANIA

Australia Post

The Collection of 1995 Australian Stamps, 56 p.

The Collection of 1996 Australian Stamps, 56 p.

The Collection of 1997 Australian Stamps, 56 p.

The First Australians: Australia's Heritage in Stamps, 1989, 36 p.

CANADA

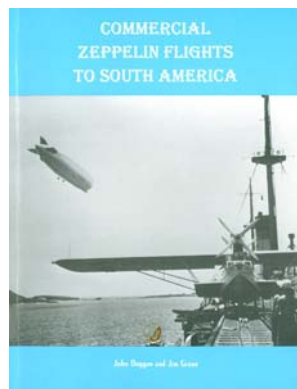
The Postal History of World War II Mail Between Canada and Switzerland. by Charles LaBlonde and John Tyacke, 2008, 249 p.

Unitrade specialized catalogue of Canadian Stamps

COLORADO

Machine Cancels in Colorado 1930 - 2003: Exhibit: by Donald Beuthel, 90 p.

Place Names of Colorado- A Genealogical and Historical Guide, Colorado Council of Genealogical Societies, 1999, 434 p.



TOPICAL

Cyclisme & Philatelie, by Piet Hein Hilarides, 2007

Cyclisme & Philatelie, Supplement, by Piet Hein Hilarides, 2007

Endangered Species. DVD by Eric Thamm.

Shells on Stamps of the World, by Kohman Arakawa, 1979, 234 p.

Stamping Through Mathematics, by Robin J. Wilson

Wolfgang Amadeus Mozart, by Tonny Van Loij

DVD'S, American Topical Association

Americana on Foreign Stamps.

Amsterdam on Stamps

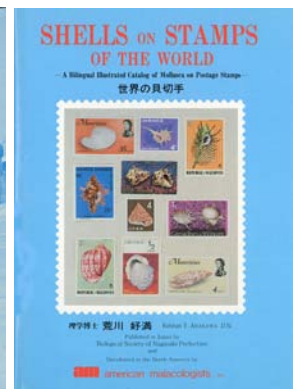
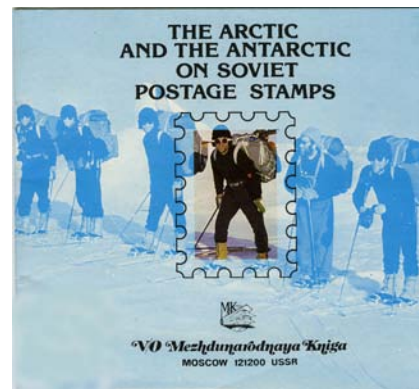
Butterflies on Stamps, Jewels on the Wing.

Flowers on Stamps. 2 vols.

Olympics on Stamps.

Pyramids on Stamps.

The Red Cross on Stamps.



POLAR

The Arctic and the Antarctic on Soviet Postage Stamps by Mezhdunarodnaya Kniga, 1980, 20 p.

MEXICO

A Comprehensive and specialized catalogue of the export issues of Mexico, by John R. Endsley

Mexico turistico: Nueva serie postal permanente, Servicio Postal Mexicano (Mexican Postal Service)

LATIN AMERICA

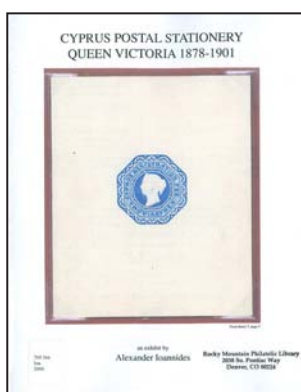
Collection of Costa Rica – Frederick Mayer. Auction Catalog, Spink/Shreves. 2008, 237 p.

Commercial Zeppelin flights to South America: the commercial South America flights and airmails of the Zeppelin airships, by John Duggan and Jim Graue

Perfilatelia Peruna, Primer Suplemento, 1772-1857. by Jose Colareta, 1981, 83 p.

The Postal History of Costa Rica to 1883 by Richard Frajola and Frederick Mayer, 2008, 187 p.

WHAT'S NEW ON THE SHELVES?



EUROPE

Austria Netto katalogbriefmarken, Österreich Brief-marken-katalog 2009, Austria Netto Katalog

Catalogue des Timbres Postes 1920, Yvert y Tellier, 952 p.

Cyprus Postal Stationery: Queen Victoria 1878 – 1901, exhibit by Alexander Ioannides, 2008, 160 p.

Il Libro dei Francobolli D'Italia, by Valori Postali

Filatelisticky Atlas, by Bohuslav Hlinka and Ludvik Mucha 1987, 229 p.

The Free Territory of Trieste under the Administration of the Allied Military Government, Album by Joseph V. Bush

How Postage Stamps are Made, Swiss Post, 1983, 20p.

Indexes to the Library Books and Journals of the Austrian Philatelic Society and the APS Journal "Austria", Austria Philatelic Society, 2008.

Osterreich Handbuch und Specialkatalog (4 vols.) by Ulrich Ferchenbauer, 2008

Osterreich Netto Marktpreis katalog – 1982, Netto Katalog, 1982, 224 p.

Reference Manual of Forgeries, by Dr. Werner M. Bohne, Germany Philatelic Society, 14 vols., 1983

Spanien/Portugal Katalog mit Andorra und Gibraltar, Michel, 1981, 219 p.

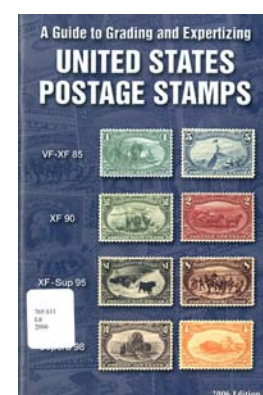
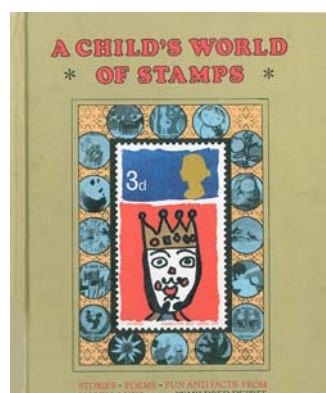
Speciale Catalogus 1999 : van de postzegels van Nederland en overzeese rijkdelen

Spezialkatalog der AM Post Wertzeichen Fur Deutschland und Ihrer Verwendungen by Manfred Drossard, 1976, 68 p

Swiss Stamps: Something for Everyone, Swiss Post, 2008, 16 p.

Spezialkatalog uber die briefmarken der Schweiz und von Lichtenstein, 1945, by Zumstein 1944, 464 p.

The Revenue Stamps of Bulgaria by Albert Hilchey, 1968, 33 p.



UNITED STATES

Americana on Foreign Stamps. DVD, by American Topical Association

Arizona Statehood Postmark Catalog, by Robert Bechtel 1989, 288p.

The Complete Civil War DVD ROM - Official Records and More, by Oliver Computing LLC, 2004

A Description of United States postage stamps: historical and commemorative issues from 1893, by United States Post Office

A guide to grading and expertizing United States stamps, by William A. Little and Michael W. Sherman

A History of the rectangular survey system, by Albert C. White

The Perry B. Hansen Collection of United States, Auction Catalog Sale # 963 by Robert Siegel, 2008, 310 p.

Republic Post: Texas Republic Mail – late 1835 – 1846, by Rex Stever, 2008, 169 p.

United States Classics, 1847 – 1869: William Gross Collection, by Spink - Shrives Galleries, 2008

United States postal card catalog: with a special appendix on exposition postal cards, by United Postal Stationery Society

United States Postal Service mint set of definitive stamps and postal stationery, by United States Postal Service

Wells, Fargo & Company 1861 Pony Express Issues, Scott Trepel Collection, Auction catalog by Robert Siegel Auction Galleries, 40 p., 2005

MISCELLANEOUS

A Child's World of Stamps, Stories, Poems, Fun and Facts from Many Lands, by Mildred DePree, 1973, 126 p.

The Philatelic Atlas, by Bohuslav Hlinka and Ludvik Mucha, 1987, 356 p.

Stamps! A Young Collector's Guide. By Brenda Ralph Lewis, 1990, 95 p.

ROMPEX 2009
Rocky Mountain Stamp Show



CELEBRATING 60-YEARS - 1949-2009
May 15-16-17, 2009, Denver, Colorado
www.rockymountainstampshow.com



APS To Hold Two-Day Seminar in Denver

Exhibiting For The Prize

APS will be holding a two-day seminar, May 13-14, 2009 at the Crowne Plaza DIA hotel, on the two days just preceding ROMPEX. The special ROMPEX hotel rates will apply for the days of the seminar.

Rich Drews, an APS and FIP accredited judge will conduct the seminar. Students will explore how judging takes place in all of the various exhibiting divisions. Starting with a quick review of basics, this course will delve into intermediate and advanced level topics of exhibiting to help exhibitors who wish to win a grand award or beyond, or to compete at the challenging international levels.

Students will learn what separates silver and vermeil from gold and what it takes to reach the sought-after grand award level. They will also discover

what considerations, including treatment, succinctly conveying knowledge and research, and difficulty of acquisition, will affect award level. They will gain insight into what is in the mind of judges as they make their decisions.

Exhibitors are encouraged to bring their exhibits for assistance and comparison with a wide range of successful exhibits in all disciplines.

TO RESERVE:

Cost: \$195.00 for APS members; \$295 for non-members

Hours: 9:00am to 5:00pm, May 13 & May 14, 2009

CONTACT:

Gretchen Moody, APS Director of Education
814-933-3810 or gretchen@stamps.org



BANANAPEX - Saturday, April 18, 2009
Buena Vista Community Center, 715 East Main St.
Buena Vista, Colorado

DONATIONS

The library thrives on the enthusiasm and generosity of its members. The following members have made donations to the library in the past two months. Thank you.

Paul Albright
Robert Anderson
Herman Axelrod
Victoria Aycrigg
Tim Bartshe
Jan Marie Belle
Art Berg
Nick Bede
John Bloor
Margaret Brown
Roger Cichorz
Harold Fast
Greg Frantz
Walter Figel
Nolan Flowers
Sharon Genau
Gary Gibson
Sue Gibson
Brian Kelly
David A. Kent
George Killian

Bruce Kutsche
Jim Lays
Stanley Luft
Mike Ludington
Will Mahoney
Michael Maselli
Terry Murphy
Thomas Pollard
Dave Reitsma
Roger Rydberg
Eileen Sammells
Theo Sampson
Scandinavian Col. Club
Cherie Schwartz
Travis Searls
Janet Talkington
Bob Thyfault
Jack Van Ens
Tonny Van Loij
David Weisberg

NEW MEMBERS

We extend a warm welcome to those who have joined the library in the past two months:

Dennis Newman, Parker, CO

Ron Yeater, Denver, CO - Collects Germany (allied occupation, Berlin) Great Britain, British Africa, Poland

Dede Horan, Englewood, CO – Collects Post Cards; Post Card dealer

Anthony Leonardi, Sr., Denver, CO – Collects United States

Ron Hancock, Littleton, CO – Collects many areas

George T. Sperl, Lake City, CO – Collects Worldwide Classics

Alan Leiman, Littleton, CO

With the addition of these new members, the current active membership of the RMPL stands at 479. Thanks to all for your support.

U.S. Philatelic Classics Society, Rocky Mountain Chapter

The local chapter of the U.S. Philatelic Classics Society will meet at the RMPL on Thursday, April 2 at 6:30pm at the RMPL library. Gary Starkey will give a look at postal stationery of the classic period. Please don't forget to bring along a new item or two for "show and tell". Steve Pacetti will also have information from the Society's annual meeting.

A Lincoln-Douglas Debate

A debate on *Lincoln, The War President*, will be held at the RMPL on Saturday, April 11 at 1:30pm. A panel of noted local historians, philatelists and judges will participate and explore the facts and myths of Lincoln's life and presidency. This event will be in a debate format with each participant stating their position on various issues with rebuttals.

Organized by Greg Frantz, 303-805-5512.

New Stamp Club Formed

The Wind Crest Stamp Club held its first scheduled meeting on February 26, 2009. Future meetings will be held on fourth Thursdays at 2:00pm in the Creative Arts Room at the Wind Crest retirement community located near C-470 and South Santa Fe Drive.

Contact Peter Adgie for information 303-933-4739.



Is There a Pattern Here?

Stamps as art is nothing new but the latest fad among commercial artists seems to be the use of simulated postage stamps in their designs. In the last issue we noted that Denver used simulated stamps in their promotion of holiday tourism. What's next?



SECOND SATURDAY PROGRAMS AT THE LIBRARY

Second Saturday programs are sponsored by the library and attract a friendly group of folks who are interested in a specific subject or who are interested in learning more about an area of philately that may be new to them. Contact Jim Kilbane if you would like to present a program.

e-mail: aurora_80017@yahoo.com

**The programs begin at 9:00 AM and are over by 10:00 AM.
Doughnuts and coffee are complimentary and all are welcome.**

MARCH 14

Post Offices of Park County - Then & Now by Ronald Hill

Of the three post offices in Park County established in pre-territorial days, which one is still in operation today?

This is an ongoing project with new material being gathered and added all the time. Only seven remain today of the 59 post offices that began before 1900 in Park County.



APRIL 11

Canary Island Airmail During the Spanish Civil War

by John Bloor

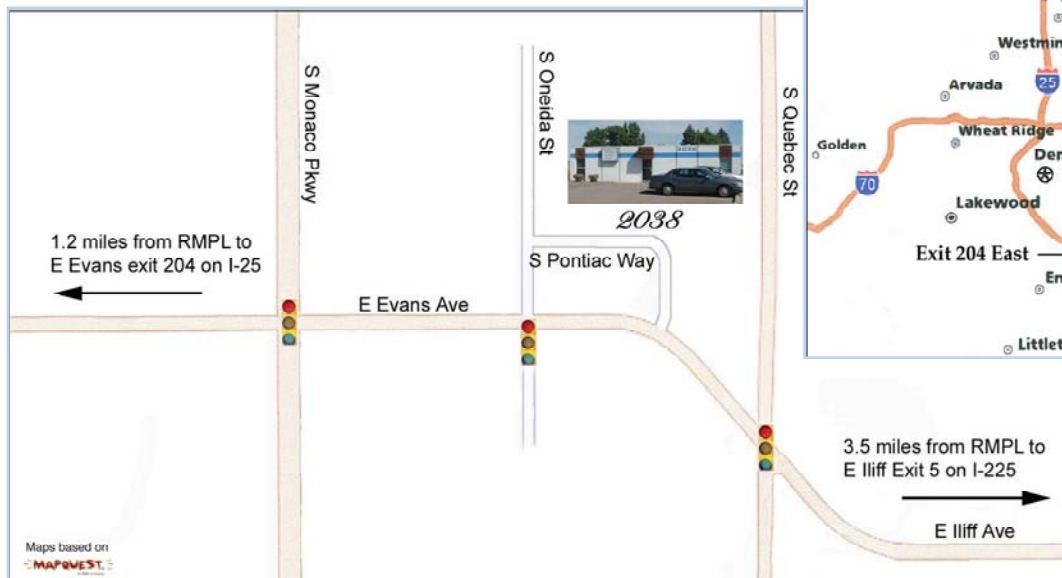
In 1936, shortly after the beginning of the Spanish Civil War, the aircraft used for the Canary Islands airmail service were commandeered for military operations. In October, 1936, an arrangement was made with Lufthansa to reestablish this service. To pay for it, the Canary Islands overprinted stamps specifically for airmail service. This talk is about the service, these stamps, and some related cinderella stamps.

Closed Albums: We are sad to announce the passing of the following members of the philatelic community.

Mary Jones of Commerce City, was in her mid 90s and had been a long-time RMPL volunteer soaking stamps by the boxload. She delighted in doing this for the library from her home, and probably soaked off several hundred thousand stamps in her 6 years volunteering for the RMPL.

William Rogers: A former well known stamp dealer in Denver and RMPL member recently died in his sleep. Bill had been active in stamp dealing until about 2001, when various ailments forced him to retire.

Visit the RMPL ...



Hours
 Monday 10:00 AM - 4:00 PM
 Tuesday 10:00 AM - 4:00 PM
 Wednesday 10:00 AM - 4:00 PM
 Thursday 2:00 PM - 8:00 PM
 Friday 10:00 AM - 4:00 PM
 Saturday 10:00 AM - 4:00 PM
 Closed Sunday



What's Happening at the RMPL...

"Come and Enjoy the Activities"

Monday, Tuesday, Wednesday, Friday, Saturday 10:00 AM - 4:00 PM
Thursday 2:00 - 8:00 PM. Closed Sundays and Holidays. Phone: 303.759.9921

Meeting times and places sometime change. It is best to call the library or the club to confirm the place and time. A calendar of reserved club times is kept by Don Beuthel at the library. Clubs should check the calendar regularly and notify Don (303-755-9328) of any changes or updates.

MARCH 2009

- March 4** - Meeting-Aurora Stamp Club
6:30 pm trading, 7:30 pm meeting/program
- March 7** - Meeting 10:00 am
Scandinavian Collectors Club
- March 7** - Meeting 2:00 pm
TOPIC, Topical Collectors in Colorado
- March 11** - Meeting - 7:00 pm
Denver Germany Stamp Club
- March 14** - 9:00 - 10:00 am
Second Saturday at the RMPL
Program by Ronald Hill
Post Offices of Park County
- March 14** - Meeting - 10:00 am
Mexico/Latin America Study Group
- March 14** - Meeting - 11:30 am
Universal Ship Cancellation Society at RMPL,
- then visiting Robley Rhine in Boulder
- March 19** - RMPL Board Meeting - 7:00 pm
- March 21** - Meeting 9:30 am-Noon
Metro Denver Young Stamp Collectors Club
Program: *Internet Sites for Young Collectors*
- March 24** - Meeting - 7:30 pm
Rocky Mountain Stamp Show Committee
- March 25** - 7:30 pm - Israel Stamp Club

All visitors and members should confirm with individual clubs about the time and place of their activities.

APRIL 2009

- April 1** - Meeting-Aurora Stamp Club
6:30 PM trading, 7:30 pm meeting/program
- April 2** - Meeting 6:30pm
US Philatelic Classic Society
- April 4** - Meeting 10:00 am
Scandinavian Collectors Club
- April 4** - Meeting 2:00 pm
TOPIC, Topical Collectors in Colorado
- April 8** - Meeting - 7:00 pm
Denver Germany Stamp Club
- April 11** - 9:00-10:00 am
Second Saturday at the RMPL
Program by John Bloor
Canary Island Airmail During the Spanish Civil War
- April 11** - 10:00-11:00 am
Mexico/Latin America Study Group
- April 11** - 11:30 am
Rocky Mountain Aerophilatelists
- April 11** - 1:30 pm - Lincoln Debate
- April 18** - Meeting - 9:30am - Noon
Metro Denver Young Stamp Collectors Club
Program: *Tin Can Mail*; by Marc Silberman
- April 22** - 7:30 PM - Israel Stamp Club
- April 28** - Meeting - 7:30 pm
Rocky Mountain Stamp Show Committee

Scribblings is published bimonthly by the Rocky Mountain Philatelic Library, Editor, Ronald Hill, 2038 S Pontiac Way, Denver, CO 80224. The Rocky Mountain Philatelic Library is a chartered Colorado nonprofit corporation and an IRS designated 501 (c)3 charitable organization. Membership subscriptions over that for the regular membership, and donations of appropriate philatelic materials, are deductible for U.S. income tax purposes.

RMPL BOARD OF DIRECTORS

President: Sergio Lugo - Operations Manager: Don Beuthel - Vice-President: Jim Kilbane
Corresponding Secretary: Don Dhonau - Recording Secretary: Paul Lee - Treasurer: Bob Blatherwick
Directors: Jan Marie Belle - Roger Cichorz - Dalene Thomas - David Weisberg. Emeriti: James L. Ozment and John H. Willard