

# Scribblings

...from the Rocky Mountain Philatelic Library



Ellengail Beuthel, Librarian...

Vol. 17 - No. 1  
www.rmpldenver.org

2038 South Pontiac Way, Denver, CO 80224  
303.759.9921

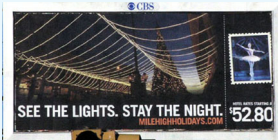
January-February 2009  
Email - rmpl@qwestoffice.net

## IN THIS ISSUE

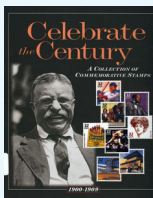
### ELECTION ISSUE

VOTE NOW  
BALLOT ENCLOSED

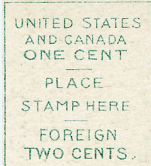
The Little Library That  
Could.....1-3



Denver Holiday Stamps..3  
RMPL Elections.....4-9



What's New On The  
Shelves.....10-12  
Book Review.....12-13  
Volunteer Christmas  
Party.....14-15  
CherpeX Stamp Show...16



Denver Postcard Show...16  
Donations..... 17  
New Members ..... 17  
Exhibit Awards ..... 17  
Members Published .....17  
"Camp Center" Gold ....17  
Second Saturday  
Programs.....18  
Membership  
Application.....19  
What's Happening  
Calendar..Back Cover

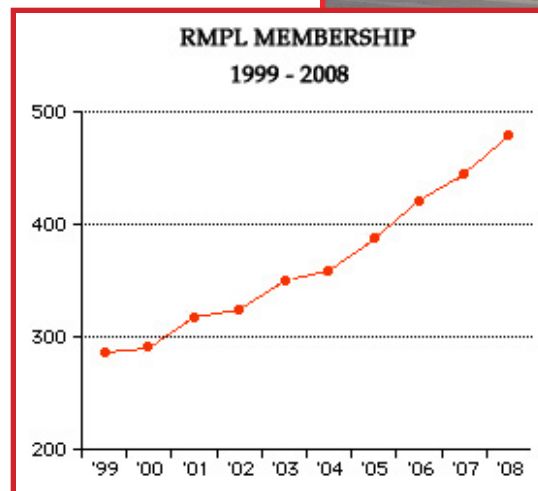
## The Annual State of the Library Report

# THE LITTLE LIBRARY THAT COULD

by Ron Mitchell, President

I arrived at the RMPL about 1 o'clock on a lazy Wednesday afternoon not long ago. The 14 spaces in our parking lot were full, so I had to park on the street. On the street! On a Wednesday! Years ago, the volunteers would talk about how great it would be to find the parking lot full on a weekday when nothing special was going on. Now it's happening with some regularity and it's a good sign of your library's continuing success.

*The RMPL parking lot on a recent Wednesday afternoon. The car on the street belongs to yours truly.*



*The chart on the left shows how the library has had a steady growth the last ten years.*

The success is built on the first ten years under the leadership of Don Beuthel as president and the other founders. They bought a building and paid off the mortgage. They built a foundation for the library that has made it easy for people like me to keep things going.

Every volunteer during those first ten years played an important role. A "perfect storm" of people and ideas came together and the RMPL flourished as a gathering and learning place for stamp collectors.

*continued next page*

## State of the Library continued from page 1

I have served as president since 2003, and it is time for me to step aside, so it is appropriate to take a look at what has been accomplished the last six years to keep The Little Library That Could cooking along. The biggest change was expansion in January, 2004. Peter Laux headed up a committee that looked at many possibilities and came up with a plan that included installation of high density rolling shelves in a room we had been using as storage. The compact shelving increased our shelf space by a third, and it was hoped that it would be enough to take us five years into the future.

The Sales Division has grown a great deal under Sergio Lugo's leadership. Sergio and his group of volunteers have organized donations as they come in and prepared them for sale on the shelves. Some of the nickel books are even organized by Scott number. The fact that the quality of stamps donated has improved combined with the organization and presentation to buyers has resulted in sales that amount to half of the library's income.

Another major change was the addition of a color copy machine four years ago. Don Beuthel suggested the library should have a good color copier with the idea we could download exhibits in color from the internet and make copies of members' exhibits for the RMPL's holdings. We have wound up using it to print Scribblings, club newsletters, and our first book, among other things. Besides being a wonderful tool for our members, the machine has helped bring national attention to the library.

Our web site was set up by Roger Rydberg and has gone through several dramatic changes over the years. Travis Searls joined the team as a second Webmaster and has given us the ability to add past issues of Scribblings and our auction catalogs. It's amazing what information about the RMPL and our stamp collecting community is available on the web site with just the click of a mouse. Take a look at [rmpldenver.org](http://rmpldenver.org).

Our membership as this is written is at 479. That is a record breaking gain of 35 active members over last year, an 11% increase. One thing we have noticed about recent renewals and memberships is that most of them are at the "Contributing" level of \$25, which includes checkout privileges. In the not too distant past, our most common membership by far was "Regular" at \$15.00 a year. We also have a record number of members at the \$50 and above range.

One more remarkable accomplishment: The Publications Committee released its first book, *Camp Genter: Origins and Operations of a 4th Class Post Office*. As you will read elsewhere in this issue, it has won three gold awards for philatelic literature this year.

Now, as the library enters its 17th year of serving collectors more good changes are afoot.

### THE ELECTION

Sergio Lugo will be the new president since he is running unopposed. Sergio is primarily responsible for attracting nine candidates to fill four At Large board positions. All nine are active in library activities and deserve to be on the board. They are excellent people and bring a level of expertise to the RMPL's needs that is unprecedented.

To put it mildly, we are honored that there are so many candidates who would like to join the board.

One other office is contested with two people running for Treasurer.

Please look at the candidate profiles in this issue and take a few minutes to vote.

### FUND RAISING

A new committee is going to aggressively pursue grants and other fund raising possibilities. There is a long list of things we would like to do to improve the library that cost money.

### BUILDING MAINTENANCE

Now that the women's bathroom has been remodeled, the next major project is to rewire the



Soon after taking over as President I dropped a huge box of kids' stamps and discovered librarianship isn't all fun and games. Oops.

building. Arrangements are being made to do the work this spring. We have never had a building maintenance committee before and its members are going to make sure we take proper care of this important asset.

#### BUILDING/EXPANSION COMMITTEE

This is another new group that is continually assessing our needs so that as opportunities arise to look at moving to another space or expanding shelf space in the building we are in, we will know exactly what we need for the future. This may sound like a simple task, but it is complicated and we are blessed to have a group of people on the committee who know the right questions to ask to come up with a flexible "master plan."

#### PUBLICATIONS

Now that we have one RMPL publication under our belt, several more are in the works:

*Danish Ore Bicolor Issue: A Primer*, by Peter Bergh (nearly ready for printing)

*National Park Post Offices*, by Paul Lee

*The Torah*, by Mark Vainer and Dasa Metzler.

#### PERIODICAL LISTINGS

We have always had an informal written listing of periodicals, but it has never been computerized. Librarian Ellengail Beuthel is formally making a list of each periodical in our holdings. William Crabbs is using a computer dedicated to expanding the listing of the names of the periodicals to include our exact holdings, issue by issue. This is going to take some time, but it is certainly worth doing.

#### AN ONLINE CATALOG

For the last three years, we have been looking at ways to economically put our catalog on the internet. We have thought it could happen "soon," but we were wrong.

You should be skeptical of optimism on my part, but I do believe the project will come to fruition in 2009. There could even be very good news in the next issue of Scribblings.

---

Thank you to all who have made my six years as President a wonderful experience. Our volunteers and donors are at the heart of the library's success. Please thank them if you get a chance.

I am confident, as you should be, that the new President and Board will continue to improve the library's mission to provide a place for stamp collectors to nurture their hobby.

*Ren Mitchell*

---

## Did You See The Denver Holiday Stamps?

*"Mile High Holidays" promotion features stamp designs to promote downtown Denver.*



This recent holiday season the Denver Metro Convention & Visitors Bureau incorporated "stamp" designs in their annual promotion to attract visitors to downtown Denver during the holidays. From November thru January the campaign placed print advertising in *5280 Magazine* and regional newspapers as well as outdoor advertising such as those shown here (seen on South Broadway).

## ~~ RMPL ELECTIONS ~~

It's that time again. The current three year term for all RMPL officers and Board of Directors members expire on March 1, 2009. Three officers and two members of the current Board of Directors have chosen not to stand for reelection to their respective positions.

All candidates were asked to submit a short Candidate Statement to help you make your choices.

For members of the Rocky Mountain Philatelic Library, a ballot and return envelope is enclosed with this issue of "Scribblings" so that you may participate in this election. A ballot box will be available at the library for you to deposit your ballot, or you may return it via mail. In either case, PLEASE seal the ballot envelope before returning it. Ballots will not be available at the library.

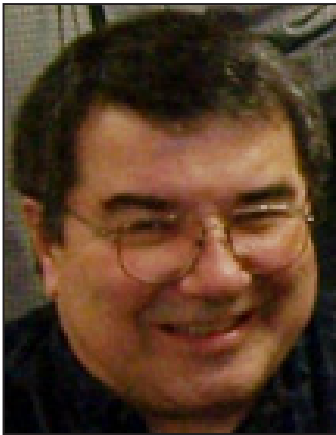
**Ballots must be received by 4:00 PM on Saturday, January 31, 2009 in order to be counted.**

**PLEASE TAKE THE ADVANTAGE OF THIS OPPORTUNITY TO VOTE IN THE LIBRARY'S ELECTIONS.**

## ~~ OFFICER CANDIDATE STATEMENTS ~~

### FOR PRESIDENT...

### SERGIO LUGO



**RMPL Member Since: 1993**

**Current and/or Previous positions at the RMPL:**

*Incumbent Director - Organizing Committee, founding member # 4  
- Periodicals Manager: 1995 - 2005 - Sales Manager: 2003 - 2008*

The RMPL is a unique philatelic resource in the Rockies and in the nation - for many reasons that are too numerous to note here. As one of the founding members of the Library, my goal from the outset was to insure the availability of philatelic resources (literature, catalogs, stamps, a meeting facility) that would broaden the depth of resources available to me and to the collectors in the area. In the past 15 years it has more than met those expectations and gone way beyond what I ever imagined it would - in large part because of the work and labor of many volunteers and a reflective RMPL Board. Growth in services and activities of the RMPL has already begun, and I hope to be in a position to lead that growth over the next several years. On the slate of upcoming challenges facing the RMPL are on-line catalog, building expansion/acquisition, continued growth in

both the volunteer ranks and Library membership, maintenance/continuity of current programs of book acquisitions and periodicals as well as Second Saturday programs, publication of additional books under RMPL sponsorship and innovative ways to expand services. With capable assistance, I'm anticipating that these will become accomplished goals of the RMPL as it approaches its first quarter century of service to the philatelic/stamp collecting community.

### FOR VICE-PRESIDENT... JIM KILBANE



**RMPL Member Since: 1993**

**Current and/or Previous positions at the RMPL:**

*Incumbent Vice-President - Second Saturday Program Director*

I am currently the Vice-President of the RMPL. I have been Vice-President for about twelve years. I have also been President of: ROMPEX, Denver Stamp Club, Cherrelyn Stamp Club, Aurora Stamp Club, Collectors Club of Denver and the Des Moines Stamp Club. I have also been President of the Trans-Mississippi Philatelic Society. I am the current President of the Colorado Postal History Society. I have collected stamps for over 35 years. My collecting interests are varied. I concentrate mostly on Colorado and Iowa Postal History. The RMPL is in for some exciting times. We are looking into expansion. Writing grants for improving the needs and wants of the membership. I feel the general membership should take more part in the future of the library.

# ~~ OFFICER CANDIDATE STATEMENTS ~~

## FOR RECORDING SECRETARY...



### PAUL LEE

**RMPL Member Since: 2006**

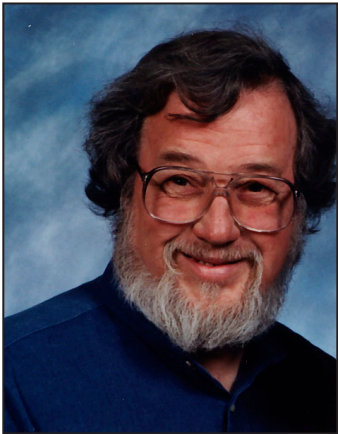
**Current and/or Previous positions at the RMPL:**  
*Chairperson - eBay Sales*

Like many of our members, I collected stamps as a kid; moved on to other things; then rediscovered the hobby as an adult. Special interests include U.S., Canada, and recently Bulgaria. I also collect stamps and postal history items related to the National Park Service, and I am currently working on a postal history of the NPS.

I have worked for the NPS for over 40 years and plan to retire in another year. My current job as a planner involves a great deal of writing, which I think helps to qualify me for the position of recording secretary.

Locally, I am a member of the Arapahoe Stamp Club. As a RMPL volunteer, I have been in charge of listing and selling excess library items on eBay.

## FOR CORRESPONDING SECRETARY... DON DOHNAU



**RMPL Member Since: 1999**

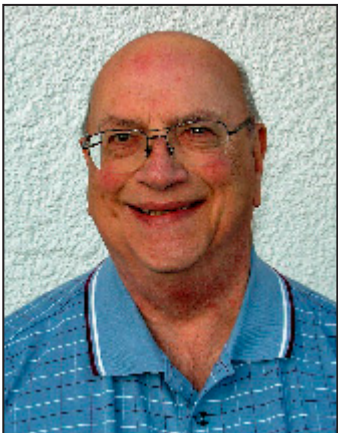
**Current and/or Previous positions at the RMPL:**  
*Monday volunteer since October 2004. One of three advisors working with the RMPL youth program*

I believe the future of philately requires RMPL to be involved in providing learning and collecting opportunities for children and youth at the library, and also in the larger community (through local stamp shows, schools, scouts, home-school families, etc.). I would help the Board make these connections and participate in programs developed.

I was a pastor and director of a small non-profit organization in Denver for 26 years, and a founding member of Community Shares of Colorado. I recruited and supervised volunteers, managed budgets, and solicited and tracked contributions. I know how important it is for organizations to keep in touch with their donors, and strengthen member ties. I would bring these skills to the office of Corresponding Secretary, if elected.

I was a member of the Rocky Mountain Stamp Show committee for the 2007 and 2008 shows, a member of APS since 1998, the Oregon Stamp Society, and the Ohio Postal History Society. My collecting interests include pre-1960 U.S., postal history, various topicals, and of course, working with youth.

## FOR TREASURER... BOB BLATHERWICK



**RMPL Member Since: 1993**

**Current and/or Previous positions at the RMPL:**  
*Incumbent Treasurer*

I am submitting my application for the position of Treasurer of the Rocky Mountain Philatelic Library, a position that I currently hold.

Having been Treasurer for the past ten years, it has been my responsibility to develop the current procedures for handling our funds and accounts, as well as handling our Federal Income taxes and our Colorado Sales Tax requirements.

I have been married for thirty eight years, have two sons and five granddaughters. I hold a degree in Business Administration from the University of Denver.

I am retired from the U. S. Postal Service, after thirty five years of service. My position at retirement was Retail Marketing Specialist. Among other things, I was responsible for the Postal Services Philatelic Program -- special cancels, first day issues, etc. It was through my job that I became acquainted with the Colorado Philatelic Community and I became involved with the founding of the Library.

# ~~ OFFICE CANDIDATE STATEMENTS ~~

## BOB BLATHERWICK CONT...

I was a member of the founding committee of the Library and have served on various committees since it's inception. Together with Bill Dunn, I helped draft our 501(c)3 application., and worked to achieve it's acceptance.

My wife and I are actively involved in our Church -- St. Luke's Episcopal - and I have been the Treasurer of the Church for the past eight years.

For the past twenty five years I have been a seasonal tax preparer for H & R Block and teach their classes in the off tax season.

I am a member of the Colorado Postal History Society with interests in Denver County, Harmon, and Montclair. My main stamp interest is Bermuda.

I have been the Treasurer of the Romplex Stamp Show since 1997.

Because of my experience in this position, I feel that I am well qualified to be the Library Treasurer and I would appreciate your vote.

## FOR TREASURER...

## TIM HEINS



**RMPL Member Since: 2002**

**Current and/or Previous positions at the RMPL:**

*Founding Advisor to Metro Denver Young Stamp Collectors Club (MDYSCC) in 2005, Treasurer of MDYSCC for three years.*

I have been a stamp collector since my youth with a period of inactivity during my early adulthood. During 2007 I marketed surplus RMPL philatelic material on eBay. I am a member of the American Philatelic Society.

Having worked as a CPA for over 30 years I am currently retired. My prior accounting work for non-profit organizations includes my tenures as Treasurer for my church and my Home Owners Association.

As Treasurer of RMPL I would maintain the accounting records in an accurate manner according to generally accepted accounting procedures (GAAP). Also I would seek to expand the current sources of revenue and I would pursue new sources of revenue. I would manage surplus RMPL funds in such a method which would provide the highest rates of return while maintaining the safety of those funds.

I am seeking a volunteer position in the RMPL where my expertise can be utilized.

## FOR OPERATIONS MANAGER...

## DONALD G. BEUTHEL

**RMPL Member Since: 1993**

**Current and/or Previous positions at the RMPL:**

*Incumbent Operations Manager - Founding Member RMPL*

Currently a member of APS, ATA, CPHS, TOPIC, Aurora Stamp Club, Machine Cancel Society, Sports Philatelists, Math Study Unit.

**National Participation** -- American Topical Association Board -14 years including 6 years as 1st Vice President; ATA President - 4 years; was Accredited ATA Judge; was Accredited APS Judge

**Local Participation** -- Aurora Stamp Club member about 25 years, President - 5 years; APEX Show Chairman - 5 years; TOPIC Founder, President - 4 years, Secretary-Treasurer -10 years; TOPEX Show Chairman - 1 year; Collectors Club of Denver member about 10 years and President 1 year; ROMPEX Committee - approx. 20 years, President 2 years; Colorado Postal History Society - member about 15 years, President 1 year.

As one of the founders of the RMPL, as President for 10 years, and as RMPL Board member since the beginning, I have a great interest in the future of the RMPL. In the recent past the RMPL has made great progress and I would like the opportunity to work to see that this progress continues. As a result of the upcoming election it appears that there will be many changes on the RMPL Board. I would like to be re-elected as Operations Manager so that there is some continuity toward continued progress. Your vote would be greatly appreciated.

# ~ BOARD OF DIRECTORS CANDIDATE STATEMENTS ~

---

## FOR DIRECTOR...



## JAN MARIE BELL

**RMPL Member Since: 1996**

**Current and/or Previous positions at the RMPL:**

*Chairperson - Grant Writing Committee*

Our Library is a unique source of knowledge, education, and philatelic fellowship. I am running for the Board of Rocky Mountain Philatelic Library because I want to help our library grow and prosper. I will contribute in any way that the Board may deem useful. Here are my talents and experiences.

I have successful experience as a grantwriter, nonprofit contract administrator, fund accountant, and nonprofit Executive Director. I have worked as a journalist, English teacher and union organizer.

My collecting interests include Denver postal history, WWII Patriotic Mail, illustrated mail of the Japanese Antarctic Research Expeditions, auxillary markings (returned mail of any kind), and Guatemala.

---

## FOR DIRECTOR...



## HOWARD BENSON

**RMPL Member Since: 2005**

**Current and/or Previous positions at the RMPL:**

*Current volunteer*

Hello. I'm Howard Benson, candidate for the RMPL Board. I have served the RMPL as a volunteer for eighteen months and began to work three months after I joined the Library. In addition to donation processing, desk duty, collection evaluation, and helping patrons. I also work in Stamp sales as back up to Sergio.

As a board member, my highest priority will be to continue our outreach activities. Our youth program, "What's in your attic?" activities, and providing a meeting venue for local stamp clubs are important aspects of outreach. Secondly, the RMPL must be prepared to immediately expand if an opportunity presents itself. We are already beyond capacity to contain our current holdings as witnessed by the storage sheds outside of our

building. Third, we should continue to support the RMPL publication program. Fourth, I applaud the efforts of the current board to look outside the philatelic community for growth and expansion funds. A part-time paid librarian should be an early result of these efforts.

---

## FOR DIRECTOR...



## ROGER CICHORZ

**RMPL Member Since: 1993**

**Current and/or Previous positions at the RMPL:**

*Current volunteer - Member of the Library Committee of the Scandinavian Collectors Club Library*

**Library Experience:** I am an active volunteer at the RMPL and primarily work in the Scandinavian Collectors Club (SCC) Library. In the past five years, I organized, cataloged, and shelved a sizable acquisition of books and periodicals from the SCC Southern California Chapter and am currently revising and editing the SCC Library Index for a new database. I believe my hands-on experience, knowledge, enthusiasm, and willingness to contribute can benefit RMPL members. My vision for the RMPL is to continue to be a renowned local and national philatelic resource and learning center, to increase the holdings of desirable newly published and out-of-print books, and to be on a sound financial foundation to implement recommendations of the long-range planning committee.

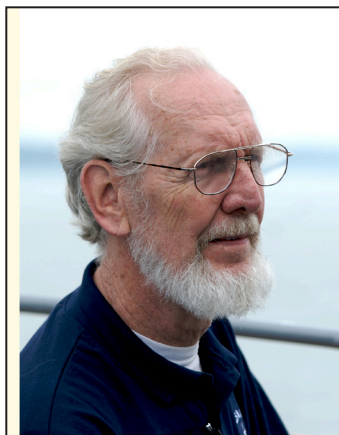
**Philatelic Biography:** I began collecting stamps in 1951 when I was nine years old. My collecting interests include Mexico, Faroes and Åland postal history, Lundy and Herm Island local stamps and covers, and "puffins" and "bonsais" as topical/thematic areas. Presently I am an officer of the Boulder Stamp Club, SCC Chapter 27, and TOPIC, as well as having long-standing memberships in AAPE, APRL, APS, ATA, Channel Islands Specialists' Society, Cinderella Stamp Club (London), Lundy Collectors Club, MEPSI, SCC, and Writers Unit #30.

---

# ~ BOARD OF DIRECTORS CANDIDATE STATEMENTS ~

---

## FOR DIRECTOR...



## FRANK LEITZ

**RMPL Member Since: 1999**

**Current and/or Previous positions at the RMPL:**

*Stamp sorting volunteer (and other duties as assigned) Member 2008 Nominating Committee*

---

I have collected stamps since I was 6 and will attribute no small part of my education to these bits of paper. The RMPL has been an amazingly successful undertaking. My interest is to expand the influence and use of the library by, among other things, making a lot more people aware of the library's existence and of the existential joys of stamp collection. The library is a wonderful place for socialization, sort of Starbucks without the coffee. Without denying the difficulties involved, my vision is to see the library in good financial shape with more youth involved.

## FOR DIRECTOR...



## STEVE PACETTI

**RMPL Member Since: 1997**

**Current and/or Previous positions at the RMPL:**

*Auction Catalog Manager*

---

We in the Denver area are very fortunate to have at our disposal a resource like the RMPL. Our previous and present founders, officers, boards, and volunteers have done a splendid job of building the library to its present position of prominence. I truly see the library becoming second to none in the West during the next decade. I would like the privilege of helping to continue the library's growth and excellence by serving on the Board of Directors.

I can bring to the task a 22-year career in technical administrative work, in addition to my philatelic pursuits. I am the current president of the Collectors Club of Denver, and vice president of the Colorado Postal History Society. Nationally, I serve on the board of the U.S. Philatelic Classics Society. My society memberships include APS, USSS, SAS/O, UPSS, Collectors Club of New York, and the Hawaiian Philatelic Society.

## FOR DIRECTOR...



## RICH PALESTRO

**RMPL Member Since: 2006**

**Current and/or Previous positions at the RMPL:**

*volunteer - I have most recently been performing maintenance work and have advised the board on the bathroom renovation.*

---

I believe I can be an asset to the board using my prior professional experience as director of engineering and construction at National Jewish hospital and the Nordstrom data center. I think the board will be faced with planning issues in the future, which I have had experience working with. The library provides an important service for stamp collectors, which I want to continue to be a member. Serving on the board provides an opportunity for me to give something back to stamp collecting.



# ~ BOARD OF DIRECTORS CANDIDATE STATEMENTS ~

FOR DIRECTOR...

## JACK VEN ENS

**RMPL Member Since: 2000**

### **PROMOTE A JEFFERSONIAN PHILATELIC VISION**

As a thespian, newspaper commentator and historian, I tour the nation in colonial costume as Thomas Jefferson, portraying him in schools, social service organizations and religious communities. Jefferson tethered his horse twice at the RMPL for dramatic presentations. Though he lived before the U.S. began issuing stamps in 1847, Jefferson showed immense philatelic interest as a copious letter writer. He left 20,000 missives.

As a candidate for the RMPL Board, I shall press on with a Jeffersonian vision. How, so?

Let's replicate his expansive vision culminating in the Louisiana Purchase. The RMPL needs more room, added territory in which to grow. Also, Jefferson constantly tinkered with new ways of duplicating his correspondence. Perhaps we can digitize some books

so there's no need for duplicates to take up precious space in the stacks. Moreover, let's learn from Jefferson's mistakes. He died \$100,000 in debt, around \$26 million in today's cash. Create a winsome foundation where members direct their estate gifts to the RMPL. Finally, Jefferson despised the consolidation of power in a chosen few. Why not cultivate a cadre of new volunteers who work as effectively and sacrificially as the library's founders?



FOR DIRECTOR...

## DALENE THOMAS

**RMPL Member Since: 1993**

**Current and/or Previous positions at the RMPL:**

*Incumbent Director - Historian, volunteer*

It has been my pleasure to serve on the board of directors of the RMPL. We are fortunate to have this resource in our philatelic community. From beginner collector to advanced exhibitors and judges, the RMPL provides support to all philatelists. It is important to have well qualified and dedicated members serve on the board to insure its future success.

I have served as President of the American Topical Association and am currently first vice-president and director of study units. I am the founder, president and editor of the Lighthouse Stamp Society. I am vice-president of ACE (Art Cover Exchange) and I have served on the board of the (ISWSC) International Society of Worldwide Stamp Collectors. I am also a member of APS, AAPE, AFDCS, and UPSS.

I collect thematics, postal stationery, and Trinidad, CO postal history. I am also an exhibitor having entered six different exhibits in various shows.



FOR DIRECTOR...

## DAVID WEISBERG

**RMPL Member Since: 1993**

**Current and/or Previous positions at the RMPL:**

*RMSS Auction Chair: 2007 to Present;*

*Member, Fund Raising Committee: 2008*

I have been a stamp collector for over 60 years with a focus on U.S., Canada, Australia, Switzerland, Japan and U. N. I have been an APS member for 27 years and am also a member of other national and local societies and clubs. I am currently treasurer of the Collectors Club of Denver.

The RMPL has had a very positive impact on philately in the Denver area. There is little question but that the Library has been successful. Today there is talk of a new building and how to finance the eventual need for paid staff. I want to help make this library the best it can possibly be and am willing to do what is necessary to make that happen.

In recent years I have also been president of two local non-profit organizations, Cancer League of Colorado and the Denver Lions Foundation. This experience has already benefited the Library and I believe will make me a valuable addition to the Board of Directors.



# WHAT'S NEW ON THE SHELVES?

## UNITED STATES

*The Postage Stamp Price Index for Stamps of the United States and Canada Since 1845*, by H. E. Harris, 1979.

*United States Specialized Catalog of First Day Covers 1936 – 1986, 1959*. Scott

*Celebrate The Century 1900 – 1949*, U. S. Postal Service.

*Encyclopedia of R.F.D. Cancels Second Edition*, by Harold Richow, 1995.

*Post Offices of Michigan Serving You, 1977*.

*Texas Postal History Handbook*, by Charles Deaton, 1981.

*A Life Span and Reminiscences of Railway Mail Service*, by James E. White, Reprint 1973.

*Kansas Post Offices May 29, 1828 – August 3, 1961*, by Robert W. Baughman, 1961.

*U. S. Spain Mails via British Convention 1849 – 1876*, by Richard F. Winter, 1990.

*United States Meter Stamps First Days and Earliest Known Uses*, by Douglas A. Kelsey, 1996.

*Pennsylvania Postal History*, by John L. Kay and Chester M. Smith Jr., 1976.

*Vermont Place Names Footprints of History*, by Esther M. Swift, 1977.

*Directory of Post Offices, 1996*. by Post Mark Collector's Club

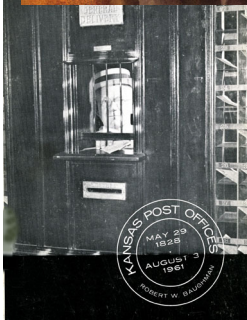
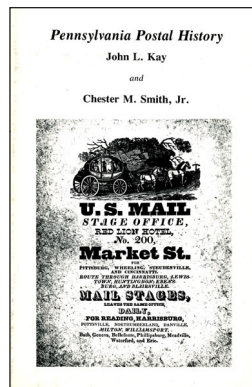
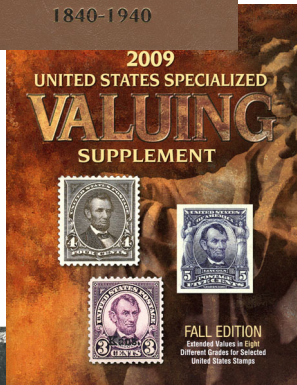
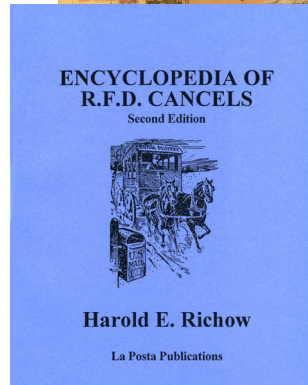
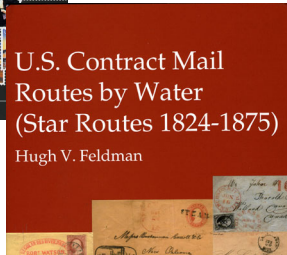
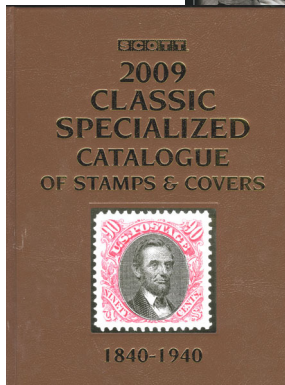
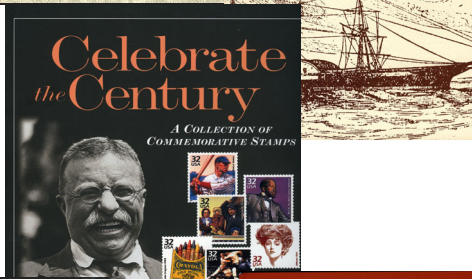
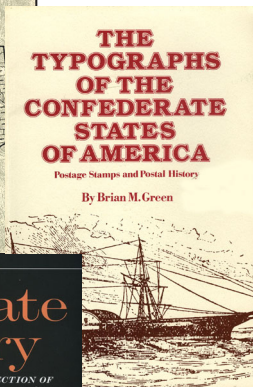
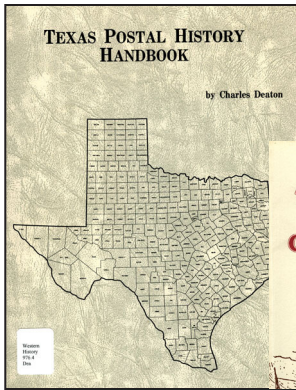
*Historical Catalog of US Postal Card Essays and Proofs*, by Bill Falbergard and Dan Undersander.

*The Typographs of the Confederate States of America Postage Stamps and Postal History*, by Brian M. Green, 1981.

*US Contract Mail Routs by Water (Star Routes 1824 – 1875)*, by Hugh V. Feldman, 2008.

*2009 Classic Specialized Catalogue of Stamps and Covers 1840 – 1940*, Scott

*2009 US Specialized Valuing Supplement Fall Edition*, Scott.



## WHAT'S NEW ON THE SHELVES?

### CAPE OF GOOD HOPE

*The Cape of Good Hope Triangular Stamps and its Story*, by Eric Rosenthal, 1957.

*The Post Offices of the Cape of Good Hope 1910 Volume 1 and 2*.

*The Official Post and the Official "Free" Letter Stamps of the Cape of Good Hope*, by Robert Goldblatt, 1983.

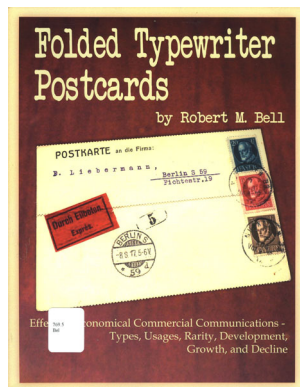
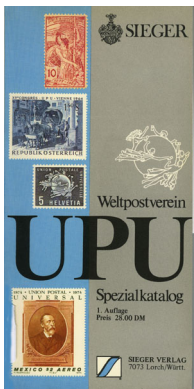
*The Field Cornet Posts of the Cape Colony*, by Ken Baker, 1987.

*The Cape Post Office During the South African Anglo – Boer War of 1899 – 1902*, by Franco Frescura, 2002.

*The Barred Oval Numeral Cancellor of the Cape of Good Hope of 1864*, by Franco Frescura, 1982.

*Commemorative Occasional Paper: A Special Paper to Mark the 21st Anniversary of the Establishment of the Postmark and Postal History Society of Southern Africa*, 1990.

*Cape of Good Hope: Its Postal History and Postage Stamps*, by Gilbert J. Allis, 1930.



### MISCELLEANOUS

*Common Sense Philately*, by Barbara A. Mueller, 1956.

*Weltpost Verein UPU Spezial Katalog*, by Verlag Sieger, 1982.

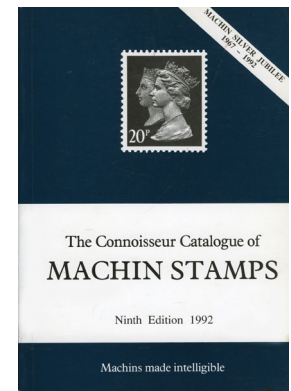
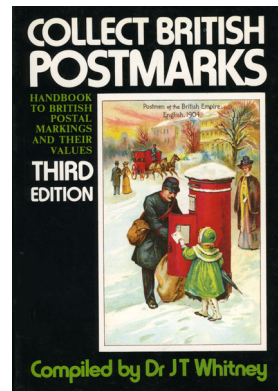
*The Stamps of Palestine Mandate Specialized Catalogue*.

*Guide to Perfin Exhibiting*, by Sylvia M. Gersch and Robert J. Schwerdt.

*Postal Stationery As Part of a Thematic Collection*, by Dalene Thomas, 2002.

*Printing Postage Stamps by Line Engraving*, by James H. Baxter, 1981.

*Folded Typewriter Postcards*, by Robert M. Bell, 2008.



### GREAT BRITAIN

*Collect British Postmarks Third Edition*, by J. T. Whitney.

*The Connoisseur Catalogue of Machin Printings Ninth Edition*, 1992

### EUROPE

*France Military Campaigns 1823 – 1897*, by Stanley J. Luft.

*Bautenserie 1948 Spezialkatalog der Bautenserie 1948 Von Westdeutschland*, by Heirrich Whittmann, 1988.

*The Overprinted Stamps of Ireland*, by James A. Hill, 1976.

*Hibernian Specialized Catalogue of Postage Stamps of Ireland, 1922 – 1972*, Hibernian Stamp Co., 1972.

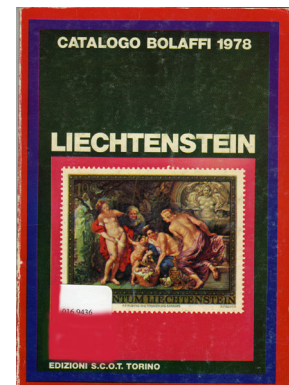
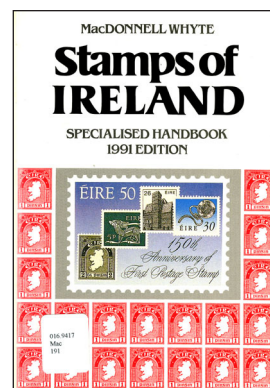
*Stamps of Ireland Specialized Handbook 1991 Edition*, by Whyte MacDonnell.

*Manual of Independent State of Croatia Issues*, by Helmut Rommerskinken, 1941 – 1945.

*Suisse Classique: ce que le Catalogue dit pas*, by Josua Bubler, 1968.

*Motive 2005/2007 Net Price list No. 9*, by Christoph Gartner, 2007

*Catalogo Bolaffi 1978 Liechtenstein*, 1978.



## WHAT'S NEW ON THE SHELVES?

### SOUTH AFRICA

*Introduction to the Late Fees of the Union of South Africa*, by Okkie De Jager, 2007.

*The Postmark and Postal History Society of Southern Africa, A History Overview 1969 to 2000*, by Neville Gomm, 2002.

*South Africa Postal Slogans (Used and Announced up to Dec 2002) A Chronological List*, by Jan Lessing, 2002.

*The Use of Postage Prepaid Date Stamps by South African Army Post Offices in Egypt During World War II*, by Tom Mullins, 2001.

*The Early Postal History of the Griqualands and the Bechuana Lands*, by Ken Baker, 1983.

*The Mount Currie Express, The Stamps of East Griqualand*, by T. M. Mullins, 1982.

*The Postal History of the Transkeian Territories*, by Ken Baker, 1983.

*An Introduction to South African Franking Meter Marks*, by Andries van der Watt, 1996.

*Mafeking, A Study of the Development of the Postal History of Mafeking From 1881 – 1910*, by Andries van der Watt, 1986.

*The Censor Markings Used on South African Military Mail (1975 – 1976)*, by George van der Hurk, 1989.

### RYUKYU ISLANDS

*Ryukyu Islands The Provisional Issues 1945 – 1953*, by Robert F. Taylor.

*Ryukyu Specialized Catalogue and Handbook, The Provisional Issues 1945 – 1953, Part 1 and 2*, by Melvin Schoberlin, 1968.

*Ryukyu Handbook, Philatelic and History*, by Minoru Sera, 1962.

*Ryukyu Island Under United States Administration 1945 – 1972, Standard List of Post Offices*, by Melvin Schoberlin, 1977.

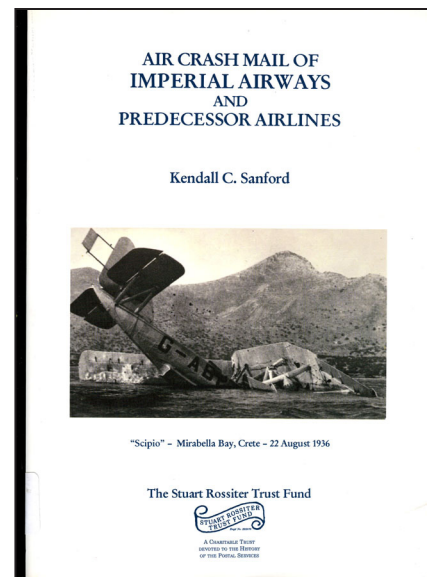
*Special Catalogue of the Postal Issues of the Ryukyu Islands Postal Stationery of the Gunto Governments 1945 – 1951, Part I*, by Melvin Schoberlin, 1978

*Specialized Catalogue of the Postal Issues of the Ryukyu (in Chiu) Island*, 1988.

*Maps of the Ryukyu Island and Maps Stamps of the Ryukyu Island Under US Administration 1945 – 1972*, by Shannon McCune, 1976.

*Specialized Catalogue of Postal Issues of the Ryukyu (Liu Chiu) Island Part 1 1945 – 1951*, by Melvin Schoberlin, 1989.

## Book Review



## Air Crash Mail of Imperial Airways and Predecessor Airlines

By Kendall C. Sanford - Review by William Crabbs

The British Government assembled Imperial Air Transport Company in 1923 by the consolidation of four independent airlines: Handley Page Transport, Instone Air Line Ltd., Daimler Airways and British Marine Air Navigation Co. Ltd. The new airline's name was changed to Imperial Airways on April fool's day 1924. Operations began on April 26, 1924 with service from London to Paris.

"Air Crash Mail of Imperial Airways and Predecessor Airlines" covers crashes and forced landings affecting Imperial Airways and the four air carriers from which it was formed, from its beginning in 1923 until it was disbanded in 1939 at the start of World War 2. The book offers a photograph or illustration of nearly every Imperial Airways or predecessor aircraft which crashed or was affected by a forced landing. Included in the book are examples of covers and different types of cachets, labels, and auxiliary markings accompanied by postal explanations when they were recorded. Found in the book are 187 aircraft photos and pictures of over 90 covers along with reproductions of newspaper clippings concerning those crashes. Incidents which occurred to Imperial aircraft are not included in the book if the aircraft was being refueled, being towed into position or did not have post office material onboard.

The author's accounts of the crashes are factual, based on newspaper clippings, photographs and earlier works describing what happened and how

(continued)



*Nierinck (311003) City of Khartoum, interrupted flight. Not listed by Sanford. Reviewer's collection.*



*Nierinck (320129a), Sanford (320129b) crash/interrupted flight, aircraft became mired in mud on runway after rain storm. Reviewer's collection.*

## Air Crash Mail of Imperial Airways and Predecessor Airlines *(continued)*

the mail was affected. By using the same numbering system as that of "*Courier Recupere/Recovered Mail*" by Henri Nierinck the information presented offers a fresh look at crash mail that is usable with earlier works.

I enjoyed the book! Being a collector of Imperial Airways material the book became a needed document. Ken Sanford abstracted information from many of the same books that I use to prepare this new work. I like the way he has compiled and presented the material through the use of photographs, postal material, newspaper clippings and published accounts.

On the downside, early flights made by British Air carriers in other parts of the world are not covered. Some flights to and from India were discussed because Imperial Airways was a part owner of Indian Trans-Continental Airways (ITCA) and material from this airline was included. However, mail flights by the RAF between Cairo and Baghdad from 1920 to 1924, when the route was taken over by Imperial Airways, were not included.

Despite these quibbles, "*Air Crash Mail of Imperial Airways and Predecessor Airlines*" is very helpful for understanding a collection of mail which includes crash material. It is a useful reference for an exciting period of British Airmail.



Above: RMPL Vice President Jim Kilbane, behind the podium, presents tokens of thanks to outgoing board members (from left) Steve Schweighofer, Ron Mitchell, and Jim Ozment, board member emeritus, who served on the board the first 13-years.



Above: Ron Mitchell holding frame containing the three Gold Medals won by the book "Camp Genter: Colorado Ghost Town Mail". Shown with Ron are Sergio Lugo and Don Beuthel. The frame also includes a plaque noting Ron Mitchell's contribution to the book as editor.

Below: Geri Van Loij and Dick Seeley





*Left: Nick Bede with his wife, Maria, Erl Fossum, and Erin and Rich Palestro.*

*Lower left: Dalene Thomas, the holiday party organizer, speaking to the group.*

*Below: Jim Kilbane adding a few nice words about Ron's work as president of the library.*



## Annual Christmas Party Honors Volunteers

More than 80 volunteers and spouses were honored at the annual RMPL Volunteer Party held once again at the White Fence Farm in Lakewood, Colorado.

President Ron Mitchell thanked all volunteers (and their supportive spouses) for their work in service to the Library and, in addition, RMPL Board members for their diligence and support of the Library. This year, a number of guests and their spouses were invited to join us and to thank them for their special financial contributions to the Library in the past year - they included: Bill Stolfus and Anne Richardson, Gregory and Anna Frantz,

and Sue Dunn.

Once again, board member, Dalene Thomas, handled all of the arrangements for the party including the beautiful hand made place settings and table favors.

Ron Mitchell was presented with a special recognition award - an audience autographed copy of the Camp Center book. Retiring President Ron and other retiring board members, Steve Schweighofer, Tim Bartshe, Bob Brown, Maury Pautz and Director Emeritus Jim Ozment, received special recognition awards for their active work for the RMPL over the past number of years.

## SHOWS AND EXPOSITIONS

# CHERPEX STAMP SHOW

Saturday, January 24, 2009 - 9 am - 5 pm

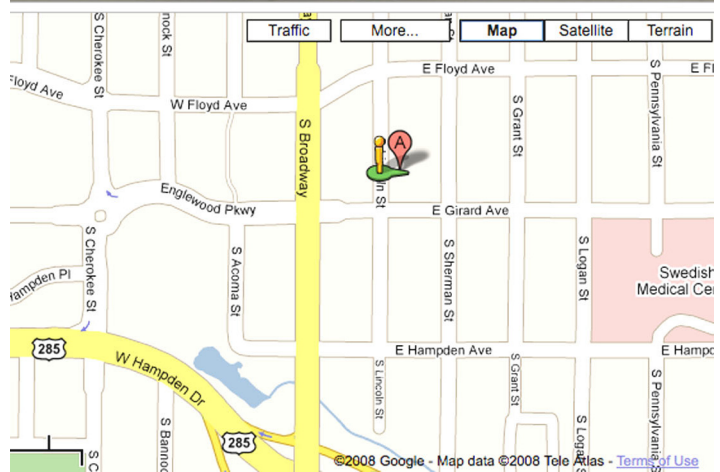
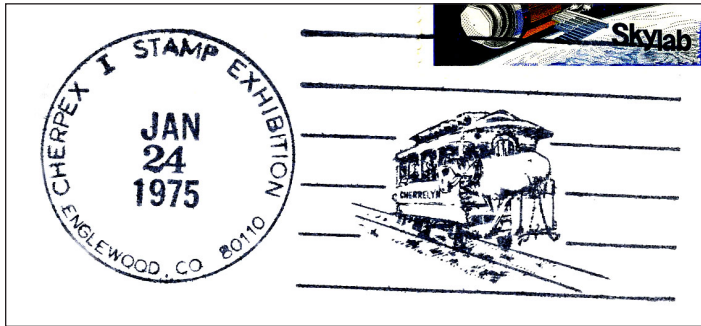
Malley Senior Citizen Center, 3380 S. Lincoln Street, Englewood (see map)

One day only for this year to load up on your stamp collecting pursuits with 15+ stamp dealers you've worked with in the past – everything from A (Aitutaki) to Z (Zululand).

Sponsored by **Cherrellyn Stamp Club**  
Englewood, Colorado – in our 70th year –  
and looking for you as a new member.

Exhibits return for the first time in 3 years – and we're looking forward to 25 elegant and informative frames for your review. Together with the U.S. Postal Services booth from the Englewood/Littleton Post Office.

At same location of past several years,  
the Malley Senior Citizen Center at  
3380 S. Lincoln Street, Englewood (see map);  
303-762-2660 <http://www.cherrellynstampclub.com>



3380 S. Lincoln Street, Englewood

OUR 33rd YEAR - Since 1975

## DENVER POSTCARD & PAPER SHOW

16th Antique and Collectible Postcard and Paper Show and Sale

Friday, January 16, 2009 - Noon - 8:00 pm

Saturday, January 17, 2009 - 9 am - 5 pm

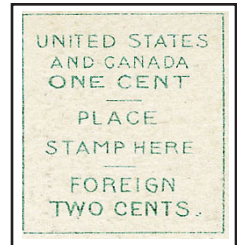
Jefferson County Fairgrounds Exhibit Hall

(15200 West 6th Avenue, Golden, CO)

- PLENTY OF FREE PARKING
- FOOD AVAILABLE ON SITE
- DOOR PRIZES DAILY
- ADMISSION \$4.00 (good for both days)
- FRIENDLY ATMOSPHERE
- DEALER INQUIRIES WELCOME

Contact: Dede Horan at 303-667-6212 or 303-220-9116

E-Mail: [DenverPostcardShow@comcast.net](mailto:DenverPostcardShow@comcast.net)





## DONATIONS

The library thrives on the enthusiasm and generosity of its members. The following members have made donations to the library in the past two months. Thank you.

|                  |                        |
|------------------|------------------------|
| Michael Anderson | Thomas Higel           |
| Herman Axelrod   | Alex Ioannides         |
| Richard Axtel    | Patricia, Tony Kazan   |
| Ben Aycrigg      | Jim Lays               |
| Jeffrey Ballin   | Judy Maddox            |
| Mark Banchik     | Henry Marquez          |
| G.A. Barber      | Mike Maselli           |
| Linda Barkley    | Charles McClure        |
| Tim Bartshe      | Marisa Medina          |
| Jan Marie Belle  | Douglas Morgan         |
| Jeffrey Beller   | Dave Morton            |
| Art Berg         | Beverly North          |
| David Berke      | R. J. Patterson        |
| Debby Berryhill  | John Pavlis            |
| Donald Beuthel   | David Plunkett         |
| Roger Cichorz    | Bill Rapp              |
| Ward Crowley     | Jim Reichman           |
| Harold Davis     | Ann Richardson         |
| James Derros     | Gary L. Rodgers        |
| Alexis Evans     | Scandinavian Col. Club |
| Walter Figel     | Marc Silberman         |
| Nolan Flowers    | Nancy Spragen          |
| Gary Gibson      | Colin Spong            |
| Marc Gonzales    | Rex Stever             |
| Gary Hendren     | William Stolfus        |
| Thomas Hession   | David Weisberg         |
| Zee Hickox       |                        |

## Exhibit Awards by Our Members

Alexander Ioannides received high honors for his exhibit, "Cyprus Postal Stationery, Queen Victoria 1878-1901" at the **WIPA 2008** show in Vienna.

His exhibit received 97 points and was nominated together with a Swedish exhibit, which also scored 97, for the **Grand Pris International**.

There were 46 judges at the show and Ioannides' exhibit received 4 votes less than the Swedish one, after secret voting which resulted in his receiving a **Large Gold Medal** and a **Special Prize**, a beautiful "Orefors" crystal bowl. In the **Palmares** both exhibits are listed as contenders for the **Grand Pris International**.

## SESCAL/Americas 2008

Marc Gonzales won **FIP Gold** for his exhibit titled "Mexico - The Provisional Period". His exhibit also won a **National Gold Award** plus the **MEPSI Gold Award**.

David Lu won **National Gold** for his exhibit titled, "Chinese Airmails and Their Forerunners". He also received the **Michael Rogers Best Asia Award**, the **China Stamp Society Best Exhibit of China Award**

## NEW MEMBERS

We extend a warm welcome to those who have joined the library in the past two months.

**Donald W. Swartz**, Albuquerque, NM – Collects U.S., World Postage Dues.

**Gene Zhiss**, Charlotte, NC

**William K. Smith**, Arvada, CO – Collects U.S., Canada, Minerals on stamps.

**Avery Tallman**, Boulder, CO – Collects U.S History, Wolves, Italy.

**John A. Gehrig**, Winter Park, FL – Collects Victorian Era – General.

**William A. McCracken**, Denver, CO – Collects 20th Century U.S., Plate Blocks, Ducks and Airmail Commemoratives.

**Nancy Weber**, Denver, CO – Collects new issues.

**David Plunkett**, Denver, CO – Collects the world.

**Thomas Lawry**, Aurora, CO – Collects RPO's and railway related material.

---

## Our Members Are Published

**Air Post Journal** - *Sergio Lugo's* article on *Condor catapult mail to Europe in the mid-1930s* appears as the lead article in the APJ issue of December.

**American Philatelist** - *Peter Adgie's* article entitled, "Don't Call Me a Stamp Collector", appears in the December issue of AP.

**Journal of Fine and Performing Arts Philately** - *David Shaw's* article entitled, "Birgit Nilsson and Sixten Ehring - Philatelic Homage to the Great Swedish Soprano and Conductor". A translated version of the same article also appeared in **Filatelisti, Filatelia Fennica**, the Finnish version of the magazine.

---

## Camp Genter Book Wins Three Gold Medals

The RMPL library's first published book, *Camp Genter: Colorado Ghost Town Mail*, won Gold Medal at the recent *Chicagopex* stamp show. The book, published earlier this year, also won Gold Medals at the *NAPEX* show in Washington, DC and the *APS Stamp Show* in Hartford.

and the **Chia Nan Chapter Award**, the **American Air Mail Society Medal**, and the **Asociación Filatélica de Costa Rica Award**.

**Ron Mitchell** received the **FIP Large Silver** for his exhibit, "Mexico - 1914 The Denver Eagles".



## SECOND SATURDAY PROGRAMS AT THE LIBRARY

Second Saturday programs are sponsored by the library and attract a friendly group of folks who are interested in a specific subject or who are interested in learning more about an area of philately that may be new to them. Contact Jim Kilbane if you would like to present a program.

e-mail: [aurora\\_80017@yahoo.com](mailto:aurora_80017@yahoo.com)

**The programs begin at 9:00 AM and are over by 10:00 AM.**

**Doughnuts and coffee are complimentary and all are welcome.**

### JANUARY 10

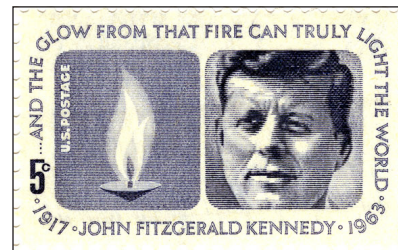
*Expertizing, Certification and Grading*  
by Tom Brey

Tom Brey, owner of Carlton Stamps, will give an informal talk on Expertizing, Certification, and Grading at the RMPL Second Saturday program on January 10th, 2009. Tom was a part time stamp dealer in Ohio, Michigan, and Colorado since the early 1980's. He began collecting stamps in the late 1940's. He participates in the local shows Apex, Cherpex, Rompex, and the Longmont show sponsored by Phil Kearney.

His focus is on Topicals, Western Europe, British, French Colonies, and all places in between. Come and listen to why and how you should consider Certification and who might you look to do it.

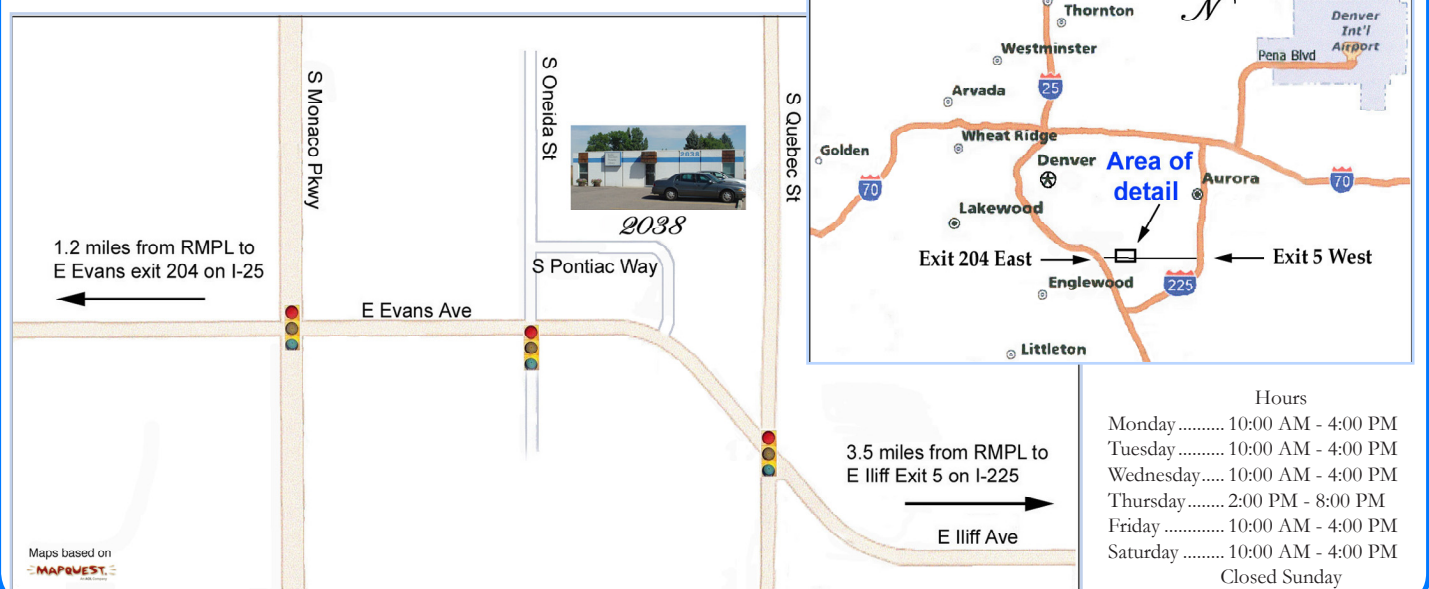
### FEBRUARY 14

*The 1964 Kennedy Memorial Stamp*  
By Sharon Lipsey



Learn the process by which a stamp design is translated from an idea to the final product. In this case, Sharon Lipsey's fascination with the 1964 John F. Kennedy Memorial stamp as a child, came to final appreciation as an adult via the resources of the RMPL. This informative and enjoyable presentation is the result of many hours of research and studying.

## Visit the RMPL ...



# Rocky Mountain Philatelic Library

2038 South Pontiac Way, Denver, Colorado 80224

Phone: (303)759-9921

Email: rmpl@qwestoffice.net

Internet: www.rmpldenver.org

## APPLICATION FOR NEW MEMBERSHIP

~~This is not a renewal notice.~~

++ Please Print All Information Clearly ++

Name: \_\_\_\_\_  
Last First MI

Address: \_\_\_\_\_  
Street Apt. No.

City: \_\_\_\_\_ State Zip \_\_\_\_\_

Phone No.: (\_\_\_\_\_)\_\_\_\_\_

Email: \_\_\_\_\_

|   |
|---|
| <p>I am a member of the following national philatelic organizations:<br/>(Please provide membership numbers if you know them</p> <p>APS_____USSS_____ATA_____</p> <p>Others: _____</p> <p>My collecting interests are:_____</p> |
|---|

### MEMBERSHIP LEVEL REQUESTED:

*Note: Checkout privileges begin at the Contributing Membership level, or \$25 per year.*

|                     |     |                  |                 |
|---------------------|-----|------------------|-----------------|
| REGULAR MEMBER      | [ ] | \$ 15.00 / YEAR  | Payment Method: |
| CONTRIBUTING MEMBER | [ ] | \$ 25.00 / YEAR  | Cash: _____     |
| SUSTAINING MEMBER   | [ ] | \$ 50.00 / YEAR  | Check: _____    |
| PATRON MEMBER       | [ ] | \$ 100.00 / YEAR | # _____         |
| SELECT MEMBER       | [ ] | \$ 250.00 / YEAR |                 |
| BENEFACTOR MEMBER   | [ ] | \$ 500.00 / YEAR |                 |
| YOUTH               | [ ] | \$ 5.00 / YEAR   |                 |

Signature: \_\_\_\_\_ Date: \_\_\_\_\_

|                    |             |
|--------------------|-------------|
| Approved by: _____ | Date: _____ |
|--------------------|-------------|

The RMPL is an IRS 501(c)3 tax exempt organization.



## What's Happening at the RMPL...

*"Come and Enjoy the Activities"*

Monday, Tuesday, Wednesday, Friday, Saturday 10:00 AM - 4:00 PM  
Thursday 2:00 - 8:00 PM. Closed Sundays and Holidays. Phone: 303.759.9921

**Meeting times and places sometime change. It is best to call the library or the club to confirm the place and time. A calendar of reserved club times is kept by Don Beuthel at the library. Clubs should check the calendar regularly and notify Don (303-755-9328) of any changes or updates.**

### JANUARY 2009

- January 1** - LIBRARY CLOSED - New Years Day
- January 3** - Meeting 10:00 AM  
Scandinavian Collectors Club
- January 3** - Meeting 2:00 PM  
TOPIC, Topical Collectors in Colorado
- January 7** - Meeting-Aurora Stamp Club  
6:30 PM trading, 7:30 PM meeting/program
- January 10** - 9:00 - 10:00 AM  
**Second Saturday at the RMPL**  
Program by Tom Breay  
*Expertizing, Certification and Grading*
- January 10** - Meeting - 10:00 AM  
Mexico/Latin America Study Group  
Program: *Stamps of Cuba*, Ron Hill
- January 10** - Meeting - 11:30 AM  
Universal Ship Cancellation Society  
Program: *Columbus' Route to Cuba*, Ron Hill
- January 14** - Meeting - 7:00 PM  
Denver Germany Stamp Club
- January 15** - RMPL Board Meeting - 7:00 PM
- January 19** - LIBRARY CLOSED - MLK Day
- January 24** - Metro Denver Young Stamp Collectors Club - Meeting at CHERPEX Stamp Show
- January 24** - Exhibiting Workshop - 10:00 AM  
(Please call for reservations.)
- January 27** - Meeting - 7:30 PM  
Rocky Mountain Stamp Show Committee
- January 28** - 7:30 PM - Israel Stamp Club

### FEBRUARY 2009

- February 4** - Meeting-Aurora Stamp Club  
6:30 PM trading, 7:30 PM meeting/program
  - February 7** - Meeting 10:00 AM  
Scandinavian Collectors Club
  - February 7** - Meeting 2:00 PM  
TOPIC, Topical Collectors in Colorado
  - February 14** - 9:00-10:00 AM  
**Second Saturday at the RMPL**  
Program by Sharon Lipsey  
*"The 1964 Kennedy Memorial Stamp"*
  - February 14** - 10:00-11:00 AM  
Mexico/Latin America Study Group
  - February 14** - 11:30 AM  
Rocky Mountain Aerophilatelists
  - February 16** - LIBRARY CLOSED -  
Presidents'. Day
  - February 21**- Meeting - 9:00 AM - Noon  
Metro Denver Young Stamp Collectors Club
  - February 24** - Meeting - 7:30 PM  
Rocky Mountain Stamp Show Committee
  - February 25** - 7:30 PM - Israel Stamp Club
- All visitors and members should confirm with individual clubs about the time and place of their activities.*

*Scribblings* is published bimonthly by the Rocky Mountain Philatelic Library, Editor, Ronald Hill, 2038 S Pontiac Way, Denver, CO 80224. The Rocky Mountain Philatelic Library is a chartered Colorado nonprofit corporation and an IRS designated 501 (c)3 charitable organization. Membership subscriptions over that for the regular membership, and donations of appropriate philatelic materials, are deductible for U.S. income tax purposes.

#### RMPL BOARD OF DIRECTORS

President: Ron Mitchell - Operations Manager: Don Beuthel - Vice-President: Jim Kilbane  
Corresponding Secretary: Robert Brown - Recording Secretary: Maury Pautz - Treasurer: Bob Blatherwick  
At Large: Tim Bartshe - Sergio Lugo - Steve Schweighofer - Dalene Thomas - Emeriti: James L. Ozment and John H. Willard