

Scribblings

...from the Rocky Mountain Philatelic Library



Ellengail Beuthel, Librarian...

Vol. 16 - No. 6
www.rmpldenver.org

2038 South Pontiac Way, Denver, CO 80224
303.759.9921

November-December, 2008
Email - rmpl@qwest.net

IN THIS ISSUE

FDR Stamp Collecting..	1-2
RMPL Bulk Lots Auction.	3
Park County Postal History.....	4-5
Have You Seen ?	5
What's New On The Shelves.....	6-7
RMPL Board News.....	8
More Show Awards.....	8, 9
Donations.....	9
New Members	9
Second Saturday Programs.....	10
Membership Application.....	11
What's Happening Calendar..	Back Cover

Second Saturday

Programs

9:00 - 10:00 AM
at the RMPL

(see Page 10 for full details)

November 8

The Present State of Philately
with Dave Weisberg

December 13

Learn About the RMPL
By Ellengail Beuthel

WELCOME WRITERS

Next Deadline:

December 1, 2008
for the Jan-Feb issue

Do you have a story to tell about a great stamp, a great cover, a great collection, or a great experience at the RMPL?

Great. Let me know.
hillwright@mac.com

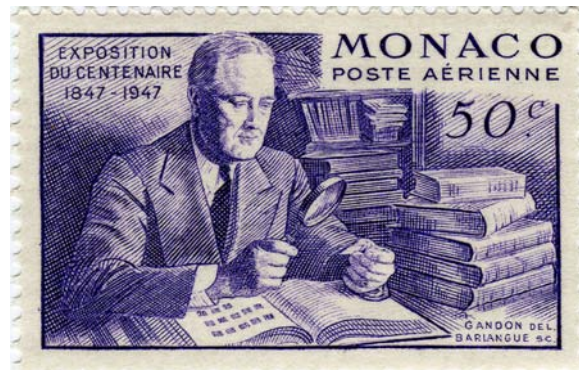
Ronald Hill, Editor

President Franklin D. Roosevelt His sedative was stamp collecting

by Jack R. Van Ens

“When you see a rattlesnake poised to strike, you do not wait until he has struck before you crush him,” the President announced by radio to an estimated sixty million Americans.

In light of recent history your first thought might be of Saddam Hussien and Iraq, but the President who first coined the phrase about the “rattlesnake poised to strike” was not George W. Bush but Franklin D. Roosevelt in a Fireside Chat on September 11, 1940.



Monaco 50c stamp shows FDR at his collection.

Roosevelt used this incident to announce to our nation that, even though war with Germany was undeclared in September 1940, U.S. warships would shoot any German naval vessels and U-boats on sight.

This vivid metaphor was used to exploit an attack by a German U-boat on the *USS Greer* which was sailing from Boston to Iceland to deliver mail to 44,000 marines that FDR had dispatched there eight weeks before. After a British patrol plane provoked the U-boat, it turned and set its sights on the *Greer*, unleashing torpedos - that missed.

One prime reason why Roosevelt served as such a magnificent war president was because of his prodigious interest in philately. I share his enthusiasm, not for war, but for stamps. He spent time away from frontline concerns to indulge in his passion as a philatelist, as I do myself today.

When life gets out of hand some turn to pills, but not Roosevelt. When the future looked bleak with pressure mounting, he turned to his collection for relaxation. Seeing the globe dotted by a myriad of countries as he sorted stamps gave FDR perspective.

Yes, stamp collecting proved habit forming for the chief executive. Though he got hooked on the hobby, it was neither detrimental to his mental or physical health. Roosevelt held anxiety in check, a gift mainly derived from stamp collecting.

continued next page

Roosevelt continued from page 1

People sent their president stamps they clipped from envelopes. The White House received mail from around the world. Every Saturday Roosevelt opened a thick pouch teeming with stamps various government departments had saved for him.



Japanese bomb Pearl Harbor, December 7

On Sunday, December 7, 1941 the President had a noonday appointment. After that he planned an afternoon with his stamps. He requested his tongs, magnifying glass, stamp hinges and a copy of the latest *Scott's Catalogue*. At 1:47pm he received the dreadful news that the Japanese had attacked Pearl Harbor.



That evening Roosevelt soothed the nation's nerves with a fireside chat. Shortly afterwards, Sam Rosenmann, a speechwriter, stopped to talk with the president and found him in his study, bent over his stamps. The President worked on his stamps as they talked. "There was no excitement here now," remembered Rosenmann, "no hectic atmosphere of false rumors; there was no fear -- not even disquietude." He added, "There was a man at a big desk, smoking a cigarette, poring over his stamps. There was concern, yes, deep concern, but it was a

calm concern. He was worried, deeply worried; but there was no trace of panic. His face was grim, but it was confident and composed."

A few weeks after the Pearl Harbor attack a naval aide Captain John L. McCrea joined Roosevelt's staff. The President stunned him with his razor sharp memory. He surveyed history and could pinpoint most places on the globe. FDR astonished McCrea with his knowledge of geographical detail and military history in both the Atlantic and Pacific theaters of war. The President confided in McCrea that if a stamp collector really studied his stamps he would not gain the world but he would gain an astounding knowledge of the world.



Atlantic Charter sets war aims of allies

In May 1943 Roosevelt invited Winston Churchill to his presidential retreat, Shangri-La, now called Camp David. Tucked away in his cabin, Roosevelt hovered over his stamps. Churchill's memoir tells best how working with his stamps proved calming for FDR. "I watched him with much interest and in silence for perhaps half an hour as he stuck them in, each in its proper place, and so forgot the cares of State."

When guests became too talkative or intrusive, Roosevelt used his hobby to show these busybodies the door. Once with Churchill he took out a stamp album as the guest chattered, "Isn't this a beauty from Newfoundland?" he blurted out, not waiting for an answer. Churchill, who liked talking to Roosevelt far into the night, knew this to be a signal that he needed to be going.

Stamps proved to be a prized sedative for the soul. Roosevelt took them in, arranged their location in albums, showed pride in filling a page, and then went to sleep, soundly and uninterrupted.



Looking over the accumulation before the bidding.



Volunteers Frank Leitz and Erl Fossum sorting the goods.



Sergio at work conducting the auction.

Bulk Lots Auction Sets New Record

This year's auction, held Saturday evening, October 4, 2008, raised \$1,100 more than in 2007 (\$7,500 this year vs. \$6,400 last year). Prices realized have been posted to the RMPL website. This total produced a great financial gain for the library.

Sergio Lugo again served as auctioneer, and was able to regale the floor through the first half of the auction, but was running out of gas in the second half—suggesting that maybe we'll need to add a second auctioneer next time.

Many improvements were learned from last year's auction and implemented this year. Among these were a faster process for getting successful bidders on the way home with their treasures. As a result, despite having 30 more lots this year, we were able to close the doors and go home 45 minutes earlier than in 2007.

This year's auction featured several more expensive lots than before. Comparatively speaking, floor bidders took most of the lots—65% of all items sold. In the future we will try to emphasize more truly philatelic rather than large commemorative lots that should appeal to both floor and mail bidders alike.

Our thanks go to all who participated in bidding and to the additional volunteers who made the auction run smoothly, including: Howard Benson, David Capra, Erl Fossum, Frank Leitz, Pamela Lugo, Rich Palestro, George Snyder and Tony Van Loij.

Park County Postal History

by Ronald Hill

Before Colorado became a territory its area was made up of parts of Nebraska, Kansas, Utah and New Mexico territories. Present day Park County at that time was a part of Arapahoe County, Kansas Territory. Kansas became a state on January 29, 1861 and the western part of the former Kansas Territory (KT) became the new Colorado Territory (CT) but only after a delay of almost a month, on February 28, 1861.



Figure 1 Hamilton cover date stamped April 6, 1861 KT although it was already in the new Colorado Territory (CT). (Colo Postal History Society)

The idea to establish a new territory began even as early as when the cities of Denver and Golden were founded. The movement for territory was promoted by William Byers, publisher of the Rocky Mountain News and who, in October 1872, joined by Territorial Governor John Evans, formed the Denver, South Park and Pacific Railroad, which was to link Denver to Park County and beyond. However, it was not until June 1879 that the railroad reached Como. It was then extended on to Garo where a branch went north to Fairplay and Alma. The main lines of the railroad then continued out of the county by way of Boreas Pass to Summit County (Breckenridge) and southwest through Trout Creek Pass to Chaffee County (Buena Vista) and beyond.

Park County was one of 17 original counties formed in the new Colorado Territory on November 1, 1861. The cover shown in Figure 1 is postmarked April 6, 1861, KT (Kansas Territory) 36 days after the Hamilton PO became a part of Colorado Territory, although still not part of Park County which was not officially formed until November that year.

Today in Park County there are ten post offices. Only one of these, Jefferson, founded January 18, 1860, dates to pre-territorial days. When the Territory of Colorado was formed there were already three post offices in those areas of Kansas Territory which are now Park County. These were Tarryall, founded January 4, 1860; Jefferson, January 18, 1860; and Hamilton, July 26, 1860.

At the time of the new territory the Post Office Department did not provide postal marking devices to the small post offices like Hamilton. Devices were the responsibility of the individual postmasters. It can be assumed, in the short time period of 36 days, that news of Kansas becoming a state and the formation of Colorado Territory, there would not have been time to have a new cancel device created.

Over the years Park County had almost 70 post offices, not all at the same time since many were established then later closed and with new ones appearing elsewhere. As mentioned before, three (3) were already here when the Territory was established in 1861 and sixteen (16) more were added during territorial years (before Colorado statehood in 1876).

The Fairplay Post Office, established only five months after the new Colorado Territory was formed, (and before Park County was officially formed) was opened August 2, 1861 and was the first to be established in the new territory. In addition to Fairplay, Alma, Grant and Hartsel are the only ones remaining today that began during the territorial years (plus Jefferson, founded under Kansas Territory, then later re-established when the railroad arrived).

At the South Park City museum in Fairplay there are a number of postal artifacts on display. Inside the Simpkin's General Store are post office boxes from the old post office in Garo. The Garo Post Office was founded on June 29, 1880 and South Park City received the PO Boxes shortly after the Garo Post Office was closed in 1955. Also on display inside the Summer Brewery building are fixtures from the Lake George Post Office.

On May 15 1959, a post office contract station opened inside the South Park City Museum. It has since been discontinued.

continued next page

Have You Seen the Ladies' Room Recently?



In case anyone wondered why Sergio has been spending so much time in the Ladies' Room, here is the final result in all of its beautiful splendor. Hours and hours of painting and scraping; plumbing, paperhanging and tiling the floor were put in by Sergio, Dave Capra and Rich Palestro. The new room features handrails to accomodate handicapped. And collectors in wheel chairs are now even more welcome than ever.

Next time you are at the RMPL, please take a look, and men, be sure it is not occupied when you check it out. Thanks everyone for a job very well done.



Park County Postal History *continued*



Figure 2



Figure 3

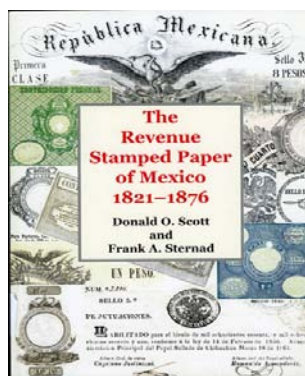


Figure 4

Figure 2 (above) shows the General Delivery window used when the contract station was operating in the museum. This equipment is now in storage. Its previous location and origin are not known.

The museum would like to hear from anyone with information on the date or origin of this equipment. See Figures 3 and 4. If you know anything about this equipment, please contact the editor, Ronald Hill.

WHAT'S NEW ON THE SHELVES?



MEXICO

The Revenue Stamped Paper of Mexico 1821 – 1876, by Donald O. Scott and Frank A. Sternad, 2006.

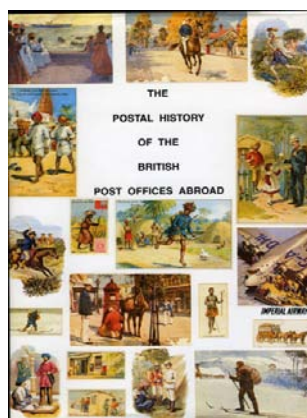
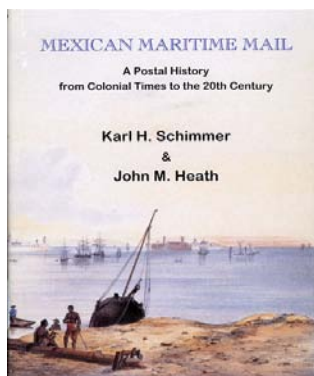
The Revenue Stamps of Mexico, by Richard B. Stevens, 1968.

Mexico, The 1868 Issue A Specialist Handbook, by John Heath & Doug Stout.

Handbook of Classic Mexico first edition, by Mark Banchik, 2002.

Mexico – Plate varieties of the Medio Real, 1856, by Vernon P. Turnburke Jr., 2001.

Mexican Maritime Mail, A Postal History from Colonial Times to the 20th Century, by Karl H. Schimmer & John M. Heath, 1997.



GREAT BRITAIN

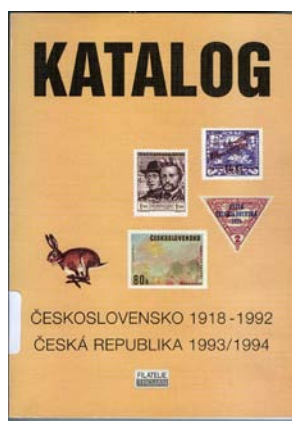
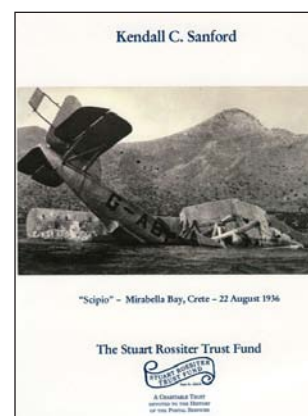
The Postal History of the British Post Office Abroad, by Edward B. Proud, 1991.

A History of the Ship Letters of the British Isles Volumes I and II, by Alan W. Robertson, 1993.

Air Crash Mail of Imperial Airways and Predecessor Airlines, by Kendall C. Sanford, 2003.

British Post Office Notices 1666 – 1899, Volume 3 1835–1839 and Volume 4 1840–1849, by M. M. Raguin, 1991 and 1990 respectively.

British Letter Mail to Overseas Destinations 1840 – 1875, by Jane and Michael Moubray, 1992.



EUROPE

KATALOG, Czechoslovakia 1918-1992; Czech Republic 1993-1994.

Officiële Belgische Postzegelcatalogus, Official Belgian catalog 1999.



FAKES, FORGERIES

The Work of Jean De Sperati, Part I The Text and Part II The Plates, by British Philatelic Associations, 1955.

Counterfeits of the First Six Issues of Crete, Counterfeit Cancellations of German Colonies and Offices, by Charles Sidney Thompson, 1943.

MISCELLEANOUS

The Guinness Book Of Stamps, by James Mackay, 1988.

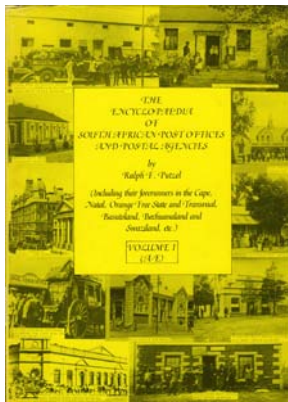
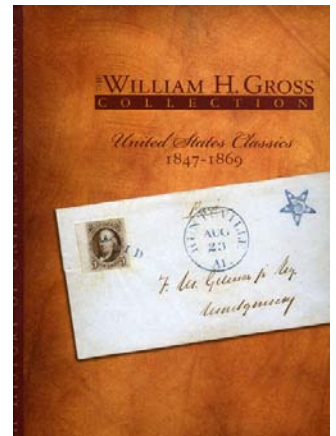
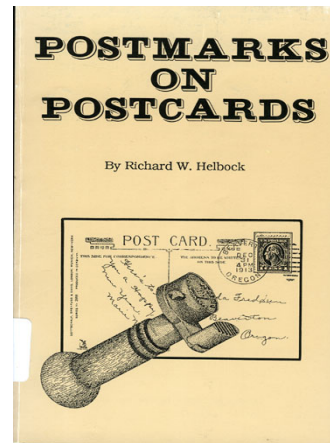
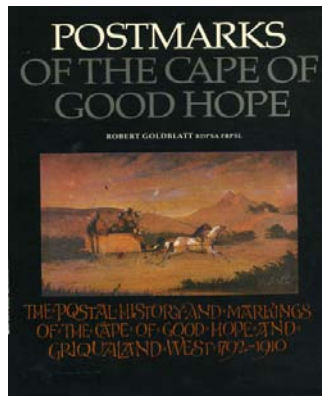
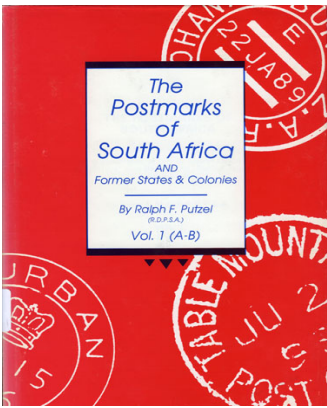
Paper Chase – The Amenities of Stamp Collecting, by Alvin F. Harlow, 1940.

Les boites a timbres – Stamp Boxes, by Brian Beet, 1994.

Cameroun in the Great War: Volume II, The French Navy and the AEF Columns - Camroun, la Grande Guerre, by Dudley Cobb, 2007.

Stamps of the Polar Worlds, by Frank R. Michel, 1983.

WHAT'S NEW ON THE SHELVES?



SOUTH AFRICA

The Postmarks of South Africa and Former States & Colonies Vol 1 through Vol 10 (A through Z), by Ralph F. Putzel and Alex T. Visser, 1992.

Encyclopaedia of South African Post Offices and Postal Agencies, by Ralph F. Putzel, 1986.

De postwaardestukken van Zuid – West Afrika 1888 – 1990 (The Postal Stationery of South West Africa), by W. J. Quik and J. Stolk, 1993.

The Pictorial Postal Stationery Cards of the Union of South Africa, by Tory Chilton.

The Triangular Stamps of Cape of Good Hope, the Reconstructed Plates, by Alan D. Stevenson, 1950.

Cape of Good Hope Fourpence Triangular, by W. F. Collins,

Postmarks of the Cape of Good Hope, the Postal History and Markings of the Cape of Good Hope and Griqualand West 1792 – 1910, by Robert Goldblatt, 1984.

The Handstruck Letter Stamps of the Cape of Good Hope from 1792 – 1853 and the Postmarks from 1853 – 1910, by A.A. Jurgens, 1943.

UNITED STATES

Bellefonte and the Early Air Mail 1918 – 1927, by Kathleen Wunderly, 2007.

The Grinnell Missionaries, Genuine or Forgeries, by Mystic Stamp Company, 2003.

The Case for the Grinnell Missionary Stamps, by Mystic Stamp Company, 2006.

Response to the 2004 Royal Philatelic Society Opinion on the Grinnell Missionary Stamps, by Mystic Stamp Company, 2006.

Bureau Issues Association, Plate Number Checklist Plates 20,000 Thru 41,303, Revised 1990.

The Postal Marking of the Canal Zone Supplement No. 2 to Handbooks No. 5, by Lawson P. Entwistle, 1987.

American Stampless Cover Catalog Volume II, 1987.

Chicago's Mail, an anthology of postal history articles focusing upon the community's growth, its interests and its attitudes, by Harvey M. Karlen, 2002.

Chicago's Crabgrass Communities, by Harvey M. Karlen, 1992.

Postmarks on Postcards, by Richard W. Helbock, 1987.

The United States Post Offices in World War II, by Lawrence Sherman, 2002.

New York State Post Offices Extant by County & Year 1792 – 1969, 1980 Edition, Empire State Postal History, 1980-2008.

Axis of Evil: Perforated Praeter Naturam, by Michael Aerrandex.

The William H. Gross Collection: United States Classics 1847 – 1869, by William H. Gross, 2008.

Canal Zone Stamps, by Gilbert N. Plass, Geoffrey Brewster, and Richard H. Salz, 1986.

RMPL Board of Directors Meeting

An important item discussed at the October 16 Board of Directors meeting was an 8-page report by the Building Committee. This report addresses the issue of the shortage of space in the present building and that the report be to be used as a guideline for the Board of Directors in future dealings with this issue. The committee researched and discussed current usage and projected needs of the RMPL, conducted interviews, and compiled notes and lists. The committee further recommended that this be a “living document” that should be updated regularly and as needs change.

Some of the issues discussed at the meeting include the fact that the library is presently filled to capacity. This issue will be discussed in more detail in future issues of *Scribblings*.

Holding a general meeting of members is also one item being discussed.

Storage sheds have already been purchased to house periodicals, auction catalogs and other material. An environment-controlled storage locker has been rented to house valuable donations, some, for tax reasons, must be held for several years before they can be sold.

The committee presented the board with a comprehensive study of present and future floor space and shelving needs.

The board thanks the Building Committee for this Report as well as for the work of the committee members; Travis Searls, Chairman, Sergio Lugo, Bob Blatherwick, Glenn Shaw, Gene Holgate and Glenn Mallory.



Dasa Metzler with her Vermeil winning exhibit, “An Economic History of German Jews, 1800-1940”.

More Hartford APS StampShow Awards

The following awards were won by RMPL members for exhibits at the APS StampShow in Hartford, August 2008.

GOLD - Stanley J. Luft “Hors-sac”—*Urgent Dispatch Mail*, plus American Association of Philatelic Exhibitors Creativity Award

VERMEIL Dasa Metzler *An Economic History of the German Jews 1800–1940*, plus American Association of Philatelic Exhibitors Award of Honor, plus German Philatelic Society Bronze Award

VERMEIL Dalene Thomas *Pharos-The Lighthouses of the World* plus American Topical Association Second plus Lighthouse Stamp Society Award

SILVER Nicholas Follansbee *The Art of the Poster Stamp*

SILVER Ernesto Cuesta *Cuba: The Stamps of King Alfonso XIII, 1890–1898*



2008 Luff Award Winners;
RMPL member Stanley J. Luft, second from right.



2008 APS Volunteer Recognition Award Winners;
RMPL board member Tim Bartshe, at far right.

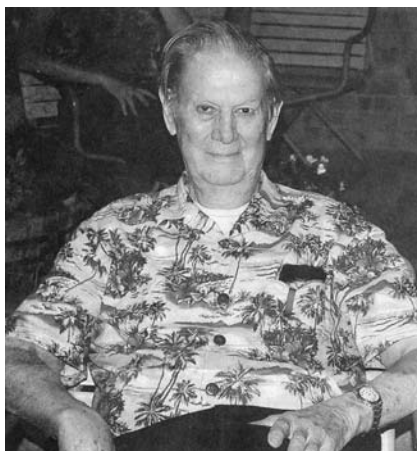
DONATIONS

The library thrives on the enthusiasm and generosity of its members. The following members have made donations to the library in the past two months. Thank you.

Paul Albright
Quinn Bailey
Mary Beth Bedford
Jeffrey Beller
Debby Berryhill
Glenn Blair
John Bloor
Roger Cichorz
Paula Cifka
Joe Crosby
Nolan Flowers
Richard Foster
Greg Frantz
B.L. Geldmeir
Tom Grill
Hal Grossman
Todd Handy
Ronald Hill

Kevin Hussey
Charles LaBlonde
Joe Lambert
John McFee
Marisa Medina
William Plachte
Steven Reeder
Roger Rydberg
Dick Stein
Webster Stickney
Bill Stolfus
Carole Sundine
Robert F. Taylor, MD
United Postal
Stationery Society
Tony Van Loij
David Van der Hoop
Steve Wineteer

CLOSED ALBUM



John Aycrigg
1926-2008

Dr. John Aycrigg a long time philatelist and member of the library passed away on August 11, 2008. Dr. Aycrigg was director of the Fort Logan Metal Health Center, medical director of the Bethesda (psychiatric) Hospital in Denver and taught at the University of Colorado. Besides stamp collecting and volunteering at the RMPL, John had a passion for trains and Hawaiian shirts. And, regardless of what shirt he wore, there was always a pocket protector well supplied with pens.

An extraordinarily quiet member, John could frequently be observed at the back tables flyspecking through thousands upon thousands of used U.S. stamps. When he tired of that, he sorted and arranged all the Italian stamps in the library's possession, taking meticulous care to sort and numerically arrange all the stamps of Italy into the 5 cents and 10 cent books and stock books maintained by the library.

NEW MEMBERS

We extend a warm welcome to those who have joined the library in the past two months.

Chattanooga Stamp Club, Chattanooga, TN

Paul Gault, Columbus, OH - Collects Germany, German Colonies, WW Perfins

RMPL Founder and Operations Manager, Don Beuthel, Officially Recognized as a "Skinflint"

Although many people who know him well have suspected this for years, there was never any proof. It is now a proven fact that Don Beuthel is an award-winning "skinflint." The definition of a skinflint is, "a miser, a person who would save money by any means."

The recent MILCOPEX stamp show in Milwaukee featured a Skinflint Competition as part of this year's annual show. MILCOPEX is an APS Champion of Champions show. The rules for the Skinflint Competition state that the total cost of the material in a competing exhibit must average "less than \$100 per frame." It was their attempt to show collectors that not all exhibits have to include rare and high priced material to make an interesting and competitive stamp exhibit.

Don entered his exhibit, "A,B,C's of the U.S.P.S.", a 10-frame exhibit showing all of the non-

denominated stamps in the Alphabet Series, "A" through "H", and both correct and incorrect uses of these stamps.

He not only received the Skinflint Award but the exhibit won a Vermeil Award in regular competition as well as the APS Medal of Excellence for post-1980 stamps, plus the USSS Statue of Freedom Award for the best exhibit of U.S. material in the show. Not bad for "cheap stuff."

Congratulations Don and now we all know that you are a top level, bona fide Skinflint.

SESCAL/Americas

A number of RMPL members won awards at the SESCAL/Americas show held in Los Angeles, October 10-12, 2008. A complete report will be included in the next issue of *Scribblings*.



SECOND SATURDAY PROGRAMS AT THE LIBRARY

Second Saturday programs are sponsored by the library and continue to attract a friendly group of folks who are interested in a specific subject or who are interested in learning more about an area of philately that may be new to them.

**The programs begin at 9:00 AM and are over by 10:00 AM.
Doughnuts and coffee are complimentary and all are welcome.**

NOVEMBER 8

The Present State of Philately and Its Future Prospects Moderated by Dave Weisberg

This is not going to be the library's typical Saturday presentation where you sit quietly munching your doughnut. Rather it is planned to be an open group discussion moderated by Dave Weisberg, also the RMPL Auction chair. Come prepared to participate, offer your views and debate those of others.

Philately today is an intriguing mix of positive and negative issues. The young collector of yesterday (i.e. most of us) has become a rare specie. Membership in local and national stamp associations is down and - where have all the local stamp stores gone?

On the other hand, high-end graded stamps are selling for phenomenal prices. *Washington 2006* was a tremendous success and exhibits at major shows are frequently stunning. So what does this mean for the hobby as we have known and loved it for much of our lives? Where is tomorrow's collector going to come from? What is my collection going to be worth some day? These and related issues will be discussed.

DECEMBER 13

Learn About The RMPL By Ellengail Beuthel

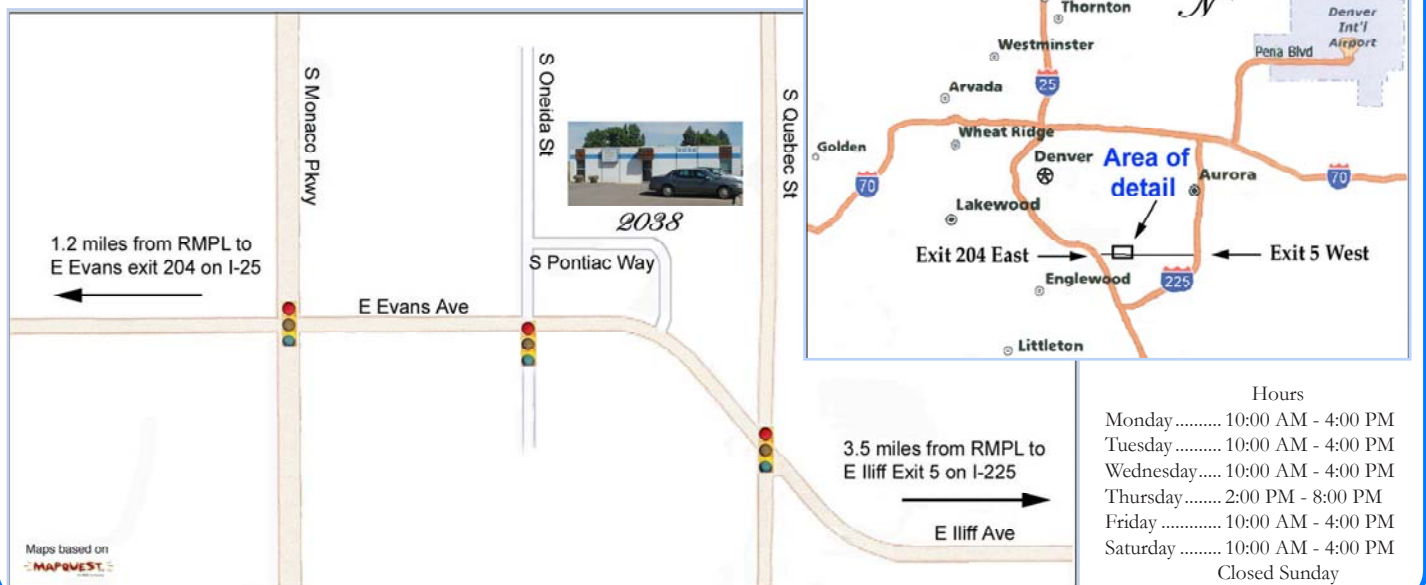


This is your opportunity to learn what is available at the Rocky Mountain Philatelic Library, which is far more than just copies of Scott's Catalogues and Linns.

Our Librarian, Ellengail Beuthel, will give a guided tour showing what materials are available and where they are housed and explain how to use the computer to find books and non-book material.

Come and find out what happens to materials from the time they are received until they are ready for you to check out.

Visit the RMPL ...





What's Happening at the RMPL... "Come and Enjoy the Activities"

Monday, Tuesday, Wednesday, Friday, Saturday 10:00 AM - 4:00 PM
Thursday 2:00 - 8:00 PM. Closed Sundays and Holidays. Phone: 303.759.9921

Meeting times and places sometime change. It is best to call the library or the club to confirm the place and time. A calendar of reserved club times is kept by Don Beuthel at the library. Clubs should check the calendar regularly and notify Don (303-755-9328) of any changes or updates.

NOVEMBER 2008

- November 1** - Meeting 10:00 AM
Scandinavian Collectors Club
- November 1** - Meeting 2:00 PM
TOPIC, Topical Collectors in Colorado
- November 5** - Meeting-Aurora Stamp Club
6:30 PM trading, 7:30 PM meeting/program
- November 8** - 9:00 - 10:00 AM
Second Saturday at the RMPL
Discussion Moderated by Dave Weisberg
"The Current State of Philately?"
- November 8** - Meeting - 10:00 AM
Mexico/Latin America Study Group
- November 8** - Meeting - 11:30 AM
Universal Ship Cancellation Society,
U.S.S. Colorado Chapter
- November 12** - Meeting - 7:00 PM
Denver Germany Stamp Club
- November 15** - Meeting - 9:00 AM-Noon
Metro Denver Young Stamp Collectors Club
- November 22** - Exhibiting Workshop - 10:00 AM
(Please call for reservations.)
- November 22** - Postmark Collectors Club -9:30 AM
- November 22** - Colorado Postal History Society
1:00 PM
- November 25** - Meeting - 7:30 PM
Rocky Mountain Stamp Show Committee

DECEMBER 2008

- December 3** - No Meeting - Aurora Stamp Club
- December 6** - Meeting 10:00 AM
Scandinavian Collectors Club
- December 6** - No Meeting
TOPIC, Topical Collectors in Colorado
- December 13** - 9:00 - 10:00 AM
Second Saturday at the RMPL
Program by Ellengail Beuthel
"Learn About the RMPL"
- December 13** - Joint Meetings 10:00 AM
Mexico/Latin America Study Group
Rocky Mountain Aerophilatelists
Universal Ship Cancellation Society,
U.S.S. Colorado Chapter
- December 20**- Meeting - 9:00 AM - Noon
Metro Denver Young Stamp Collectors Club
- Many stamp clubs are having Holiday programs and social activities in December. All visitors and members should check with individual clubs about the time and place of their activities.*

Scribblings is published bimonthly by the Rocky Mountain Philatelic Library, 2038 S Pontiac Way, Denver, CO 80224. The Rocky Mountain Philatelic Library is a chartered Colorado nonprofit corporation. Membership subscriptions over that for the regular membership, and donations of appropriate philatelic materials, are deductible for U.S. income tax purposes.

The RMPL is an IRS designated 501 (c)3 charitable organization.

RMPL BOARD OF DIRECTORS

President: Ron Mitchell - Operations Manager: Don Beuthel - Vice-President: Jim Kilbane
Corresponding Secretary: Robert Brown - Recording Secretary: Maury Pautz - Treasurer: Bob Blatherwick
At Large: Tim Bartshe - Sergio Lugo - Steve Schweighofer - Dalene Thomas - Emeriti: James L. Ozment and John H. Willard