

Scribblings

...from the Rocky Mountain Philatelic Library



Ellengail Beuthel, Librarian...

Vol. 16 - No. 2
www.rmpldenver.org

2038 So. Pontiac Way, Denver, CO 80224
303.759.9921

March - April, 2008
Email - rmpl@qwest.net

In this Issue

The Exporta Issues of Mexico	1,2,3
Australian Stamp Professional.....	4
Additions to the Shelves.....	4-5
Book Review: Lundy Island CD on Shelves.....	6
Second Saturdays	7
My Favorite Cover .	8-9
Donations	10
New Members	10
Stamp Shows	10
Membership Application	11
What's Happening Calendar	12

Who Put That Big Red Tomato on That Little Bitty Stamp?



by Ronald Hill

Stamp collectors come in all shapes and sizes. And so do some collections. Here is one modern stamp issue that can keep you occupied for many years. What's that, you say? Well if you are looking for more excitement than just comparing carmine-red with rose-orange on a 2c Franklin, and maybe searching for that one stamp in a thousand without a watermark, this may be just the thing for you.



Figure 1

The Exporta issue of Mexico introduced in 1975 and continued until 1993 is colorful, inexpensive and comes in so many varieties that the average stamp collector may never complete their collection. How about 14 different paper weights and grades for a starter? Have you ever used a paper micrometer? If not here is a good place to start. Is the paper made in England or Mexico or elsewhere in North America?

Have you ever found a BURELAGE on any of your stamps? No, not a fungus or a secret mark, the burelage is a deliberately applied pattern printed onto some of the Exportas to discourage counterfeiting. It is found mostly on high values, but not all of them. If you look at the bicicleta (bicycle) stamps (Figure 1) the one at the bottom has a burelage printed on it; but not the other one. Oh yes, some have the pattern going up to the right and others have the pattern going the other direction. Perforations? Yes, there are many variations to find. And gum? Let's see, you will find some with Glossy Synthetic Gum, Dull (matte) Synthetic Gum, Dull Polyvinyl Acetate (PVA) Gum, Semi-gloss PVA Gum, Dry Dextrin Gum, and perhaps others.

Continued on page 2

Second Saturday Programs
9:00 - 10:00 AM
at the RMPL...

March 8

"Stamps and Travels
to Rwanda"

By Rick & Joy Wall

April 12

"Afghanistan in the
Crosshairs"(Part 2)

By Steve Nadler

Welcome Authors

Do you have a story to tell? About a great stamp, a great cover, a great collection, a great experience at the RMPL.

Great. Let me know.
hillwright@mac.com

Ronald Hill,
Editor



Bob Wolf, RMPL member, working on his large Exporta collection.

Figure 2

Exportas?

Continued from page 1

The first Exporta stamp off the presses was the 1.60 peso Bicycle stamp on October 14, 1975. It paid the air mail rate within Mexico and to the United States and Canada.

But before that happened there is the story of how the idea for the stamps originated. Back in the 1970's the Mexican Postal and Commercial Trade officials came up with the idea of promoting Mexican exports with postage stamps. Once the concept was approved it was decided to hold a contest among leading artists and designers. The winner of the export issues competition was Rafael Davidson, who at the time of the competition was working in Mexico in advertising and product design.

Davidson received most of his training in art in the US and later, when the Exporta issues were finished he returned to his alma mater, the Art Center in Pasadena where he taught design and also at the Academy of Art College in San Francisco.

Upon winning the Exporta competition, one of the first things Davidson did was to meet with the TIEV (Talleres de Impresion de Estampillas y Valores), the government printing plant responsible for printing Mexican postage stamps. A number of design considerations were established.

Continued



Stamp Booklets were also printed for a number of the Exportas.

Figure 3

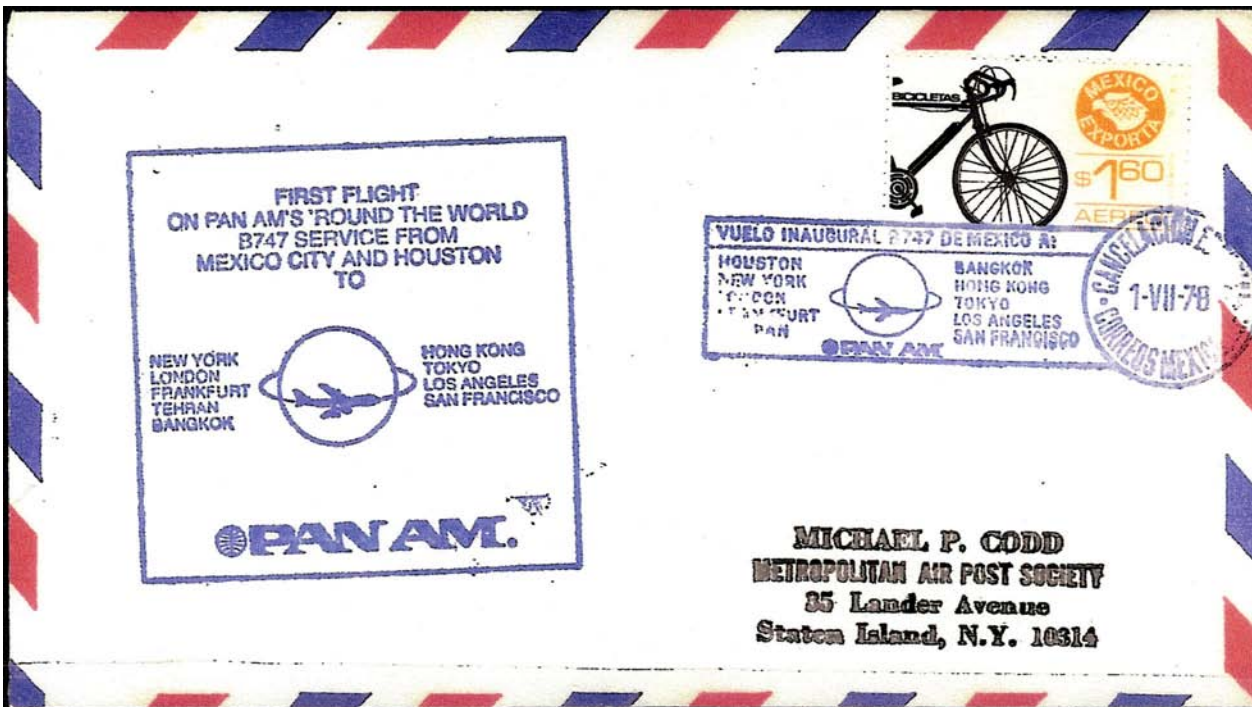


Figure 4

Known as "The Bionic Bicycle" - a rare find on cover, the stamp is printed on the reverse side of "tagged" paper due to an error that occurred while changing paper on the press. Photo of cover courtesy of John R. Endsley, Jr.



Exportas?

Continued

Each design would be easily readable without a magnifying glass, since the primary purpose of the stamps was communication. Each design would include the “Mexico Exporta” logo and a single typeface would be used for all inscriptions. In all, 28 different designs were produced. A large number of alternate designs never were used. All together there are at least 260 clearly defined variations of the stamps. Of course, this can be disputed whenever another printing flaw is discovered by a collector.

The first year 1975 saw five issues; the 1.60-peso bicycle; the 50-c Auto Parts; 80-c Beef Cattle; 3-peso Shoes; the 1.90-peso Petroleum Valve, and the 4.30-peso Strawberry. Davidson tried to exert control over the printing quality and especially the ink colors. He rejected a number of color shades and impressions, but was distressed when he discovered the “pink” 4.30-peso Strawberry had escaped his oversight.

Mentioned earlier were the great varieties of paper used for the Exportas, but another variable quickly observed by collectors was the early “tagging” using phosphorescent paper and later changed to the use of fluorescent papers.

A multitude of perforations were also used. The 80-centavo Cattle stamp, for example, was produced in four distinct varieties; gauge 14 harrow and comb perfs, 11 with large or small holes, also perf 11.5.

A number of constant printing flaws have been identified by collectors, especially on certain plate positions. One of the more dramatic errors occurred when a short section of paper was spliced to connect two large rolls of paper. In these cases (two are known; the red Cattle stamp and another with the Bicycle) the short section of paper was reversed with the fluorescent side to the back and the stamps printed on the non-tagged side of the paper. It is not known exactly how many of these incorrectly tagged stamps made it into circulation, however one rare example (*Figure 4*) is shown on a commemorative air mail cover.

Bibliography: This article is intended only as an introduction to this colorful and fascinating subject. Many references can be found in the Rocky Mountain Philatelic Library that can offer you many hours of research enjoyment. The September 1998 issue of *American Philatelist*, for example, features Exportas on its front cover and an excellent article inside. You will also find the journal *Mexicana* on the library’s shelves. Look also for the special *Mexicana Index* which lists over 70 different articles and references on Exportas that have been published in the journal since 1975.

You will also find many books in the library on collecting Mexican stamps. On the subject of Exportas, there is *A Comprehensive and Specialized Catalogue of the Exporta Issues of Mexico*, by John R. Endsley, Jr. Also *The Exporta Issue of Mexico*, by James O. Vadeboncoeur.

And, a final note, the Mexico/Latin America Study Group meets at the RMPL every month at 10:00 AM on the second Saturday.



A NEW AUSTRALIAN STAMP MAGAZINE

Now on the shelves of the Rocky Mountain Philatelic Library, are the first six issues of this new stamp magazine, *Australian Stamps Professional*. It is crammed full of philatelic material ranging from the Sydney bridge, scouting down under, a topical article about hats-on-stamps, postal history and aerophilately. Tasmanian Errol Flynn's Hollywood escapades are featured in a recent story. Work by *Scribblings'* editor, Ron Hill has appeared in five out of the first six issues



WHAT'S NEW ON THE SHELVES?

UNITED STATES

Territorial and State

The Henry G. Turnbull Collection of Arizona Territorial and Statehood Postmarks, an auction by H.R. Harmer, 2007.
The Turbulent Decade: Georgia's Post Offices 1860-1869, by Francis J. Crown, Jr., 2007.

Colonial Period

Colonial and Revolutionary Posts: A History of the American Postal Systems; Colonial and Revolutionary Periods by Harry M. Konwiser, 1931.

Revenues

Second Federal Issue 1801-1902 by W.V. Combs, 1988.

EUROPE

Belgium

La Poste aux Lettres et Les Marques Postales en Belgique de 1648 à 1849 by Lucien Herlant, 1946.

Germany & German States

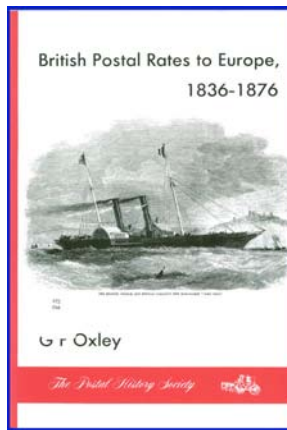
500 Jahre Post: Thurn und Taxis 1490-1867, Vols 1-3 by Werner Münzberg, 1990.
Michel-Atlas zur Deutschland-Philatelie [Philatelic Atlas of Germany] by Hans-Henning Gerlach, 1989
Postal History of Saxony by John P. Macket, 1967.

Great Britain

British Postal Rates to Europe, 1836-1876 by G.F. Oxley, 1992.
British Postal Rates, 1635 to 1839 by O.R. Sanford and Denis Salt, 1990.
The Local Posts of London 1680-1840 by George Brumeil, 2nd ed., 1970.

Holland/Netherlands

The First Postage Dues: Holland's '3S' Markings 1667-1811 by Kees Adema, 2002.
De Nederlandse Scheepspost: Vol 1: Nederland- Oost-Indië 1600-1900 by Claude J.P. Delbeke, 1998.



Hungary

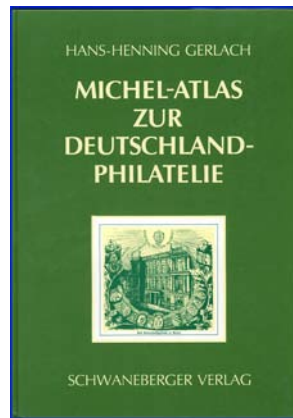
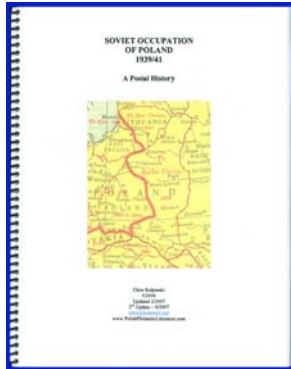
A Magyar Posta Bélyegelőtti Bérmentesítéseinek és Béktegzönyve [Handbook of the Hungarian Pre Stamp Mail] by A. Bér and É. Makkai, [no date].

Italy

Regno Lombardo Veneto [Kingdom of Lombardy Venetia] by Emil Capellaro, 2007.

Poland

Soviet Occupation of Poland 1939/41: A Postal History by Chris Kulpinski, 2006.



Scandinavia

Britis Nordisk Julemaerke Katalog [Nordic Christmas Seal Catalogue] 1985-86, [no author].

Denmark: 2 Rigsbank-Skilling 1851-1852, [no author], 1980.

I Øverste Højre Hjørne [150 Years of Danish Stamps], [no author], 2001.

The Paquebot Marks of Norway, Denmark, Finland, Iceland, and Sweden by Edwin Drechsel, 1977.

Sweden: Lion Type Stamps 1862-1872 by Georg Menzinsky and *Ring Type Stamps 1872-1892* by Erik Blomberg, 1962.

Sweden: Skilling Banco Stamps 1855-1858 by Georg Menzinsky and *Black Local Stamp & 1862 Provisional of Local Stamp Type* by Georg Menzinsky, 1985.

Switzerland

1459-1907: Der Briefpostverkehr Schweiz-Auysland [Swiss Letter Mail to Foreign Countries] by Richard Schäfer, 1995.

Vatican/Papal State

Cancellations of the Papal State by A. Bürgisser, 1980.

MIDDLE EAST

Handbook of Holy Land Philately, Part 1: The Stamps Issued during the Period of the Military Administration (1918 to 1st July 1920) by Dr. Werner Hoexter, 1970.

TOPICALS

Bicycle Stamps: Bikes and Cycling on the World's Postage Stamps by Dan Gindling, 1997.

Lighthouse Stamp Sets: A Fully Illustrated Collector's Guide by Richard Beisel, 2007.

Christianity in Ukraine: A Philatelic Survey by Andrij D. Solczanyk, 2005.

FIRST DAY COVERS

The United States Specialized Catalog of First Day Covers: Centenary Exhibition Edition, compiled and edited by Leo August, 1947.

Scribblings

MISCELLANEOUS

All Nations Stamp Finder and Dictionary, [no author], 1952.

The Congress Book 2007, edited by Kenneth Trettin. Articles:
Catapulting into the Future: First Catapult Airmail from the North German Lloyd Line Bremen--July 22 and August 1, 1929 by Jim Graue.

An Historical Overview of the First Decade of the American Philatelic Congress by Peter Martin.

Letter from Berwick by Nancy B. Clark.

The Postal History of Trinidad: 1797-1898 by Dr. Reuben A. Ramkissoon.

Private Mail Options in the Pacific Northwest by Dale Forster.

Registered Covers from Nauru, 1890-1914: An Annotated Catalog by Robert C. Stein.

Saigon Revenue Stamps after the 1975 Liberation by Joe Cartafalsa.

Via San Francisco: The Story of Samuel Walker Griffith and the Tuppenny Post by Bernard Beston.

WWII Internment of Polish Servicemen in Latvia by J.J. Danielski.

The Essentials of Stamp Collecting, [no author], 1953.

The Growth Approach to United States Postage Stamp Investing by Robert Easterly, 1971.

The Guinness Book of Stamps Facts and Feats by James Mackay, 1982.

International Postal History Seminar, Washington, D.C., 30-31 July, 1994. Papers presented:

Early European Postal Communications by James Van der Linden.

European Currencies by Cornelis Muys.

Letter Post Communications between Austria and the United States by Hermann Hader.

Postal Relations between Europe and the United States 1783-1815 by Colin Tabear.

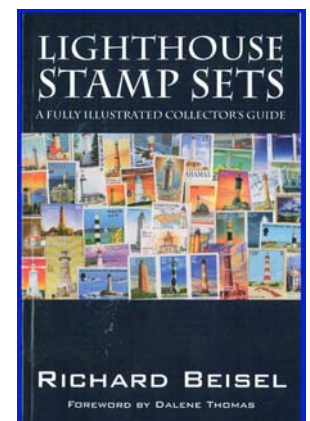
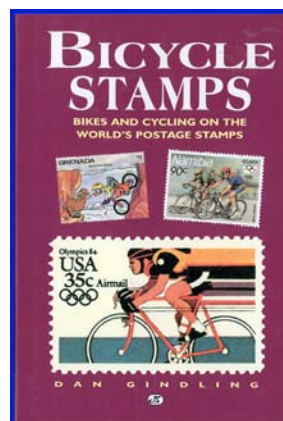
Some Aspects of the Postal Relations between Great Britain and the Continental Countries: Germany, Holland, Belgium, and France 1668-1836 by Cornelis Muys.

Maps of the United States and the World and Cartography at the National Geographic Society 1999-1988 [an index].

De Pariteit van Munten in de Postgeschiedenis 1700-1875 [Parity of Currencies in Postal History] by Leonard H.J. Janssen, 2001.

FAKES AND FORGERIES

Out-Foxing the Fakers by Jean-François Brun, 1993.



March-April 2008

Page 5

A NEW CD BOOK ON THE SHELVES OF THE LIBRARY

Labbe's Specialized Guide to Lundy Island Stamps, 2007 Edition

This new CD Book was compiled and edited by Patrick C. Labbe, MSN. Published by the author on CD-ROM. Available from the author or on eBay for about \$13.99 (price seems to vary depending on the source).



Lundy is the largest island in the Bristol Channel between Wales and the North Devon (England) coast. An overview of its long and interesting history can be found online in the Wikipedia, at <http://en.wikipedia.org/wiki/Lundy>. Mail service to Lundy was provided by the British Post Office (GPO) from about 1896 until the end of 1927. Mr. M.C. Harman acquired the island and the mail contract in October 1925. At the end of 1927, due to the lack of a sub-postmaster for Lundy, the GPO contract was terminated. Until 1929 Harman carried mail between Lundy and the mainland for free. However the service became too expensive and on 1 November, 1929 the first Lundy Island stamps were issued to defray the transportation cost. They were denominated in "puffins" with one puffin equivalent to a British penny.

Lundy stamps are classified as locals or local carriage labels, one type of cinderella. Although they are not listed by most major catalogues there are several specialized publications which do list and price them. The most recent of these and the subject of this review is *Labbe's Specialized Guide to Lundy Island Stamps, Third Edition*, published in 2007. A 2008 (Fourth) edition is now also available.

The catalog is published on a compact disc (CD) from which a hard (paper) copy can be printed. Three file formats are included: PDF (Adobe Acrobat), wpd (WordPerfect 12), and rtf (Word Pad). This is helpful since it makes the catalog available to users with different kinds of software. It is surprising that a Microsoft Word version was not included since that program is so widely used.

The WordPerfect and Word Pad files can be edited. This is important if one wants to print a paper copy because

the spacing and alignment of the text and pictures is very sloppy and the pictures vary considerably in size. The files can be printed as is but the result is messy, unattractive, and confusing. For my paper copy, I opened each file in WordPerfect, cleaned it up, and adjusted the sizes of the pictures before printing.

The illustrations are all in color which is very nice and a first for a Lundy catalogue. However, some of the scans should have been done at a higher resolution. When these images are adjusted to a usable size they become pixellated. This is particularly true of enlargements of stamp and overprint details. Some of the images appear to have been captured from web pages without credit being given to the original source.

There are eight supplements, about 100 pages, at the end of the catalog. Several of these are directly relevant to the material in the catalogue. However, two of these are scanned copies of two monographs, one by Downing the other by Gade. Although the title pages show the authors' names there is no statement that Labbe was given permission to reproduce the booklets. This is relevant to some of the comments below. In addition, the top and bottom of some pages are cut off, making the copies incomplete.

Stamps of Lundy Island, the principal competing catalog, considered to be the standard by my "sources", was originally published in 1984 by Stanley Newman. New editions and pricing updates have appeared several times. The most recent (fourth) edition was published in 2003 by Michael Bale of Puffin Stamps. It and all earlier editions are sold out, but Jon Atkinson, who now owns Puffin Stamps and the catalog rights, says that a new one should be out in early 2008. A pricing supplement appeared in 2005 in "*The New Puffin Journal*" published by the Lundy Collectors Club.

In discussing the Labbe catalog with several knowledgeable Lundy collectors and dealers, questions were raised about its accuracy and originality. They felt that much of the material was copied from other sources without attribution. Atkinson says that he is "... instigating legal action against him [Labbe] for infringement of copyright." Labbe makes the usual statement regarding the sources he used for the pricing but there was skepticism about the accuracy of his interpretation of the data.

It appears clear that the Labbe catalog is controversial and may, in fact, be extensively derivative. Putting that aside, publication on a CD in multiple file formats with color images is a significant improvement over previous catalogs. Atkinson and others might consider emulating these features. However, Labbe needs to pay much more attention to editing and layout. The book needs to be formatted to print more easily and compactly. The quality of some of the images needs to be improved. Hopefully, these technical problems as well as the legal issues will be resolved before the publication of future editions.

Reviewed by John H. Bloor, RMPL volunteer.

SECOND SATURDAY PROGRAMS



Second Saturday programs are sponsored by the library and continue to attract a friendly group of folks who are interested in a specific subject, or who are interested in learning more about an area of philately that may be new to them.

The programs begin at 9:00 AM and are over by 10:00 AM.
Donuts and coffee are complimentary and all are welcome.

MARCH 8

Stamps and Travels to Rwanda
By Rick and Joy Wall

Rick and Joy Wall will do a powerpoint presentation on their recent trip to Rwanda including a brief history of Rwanda, the genocide, the countryside, and their visits with gorillas. They will also display their Rwanda stamp collection.



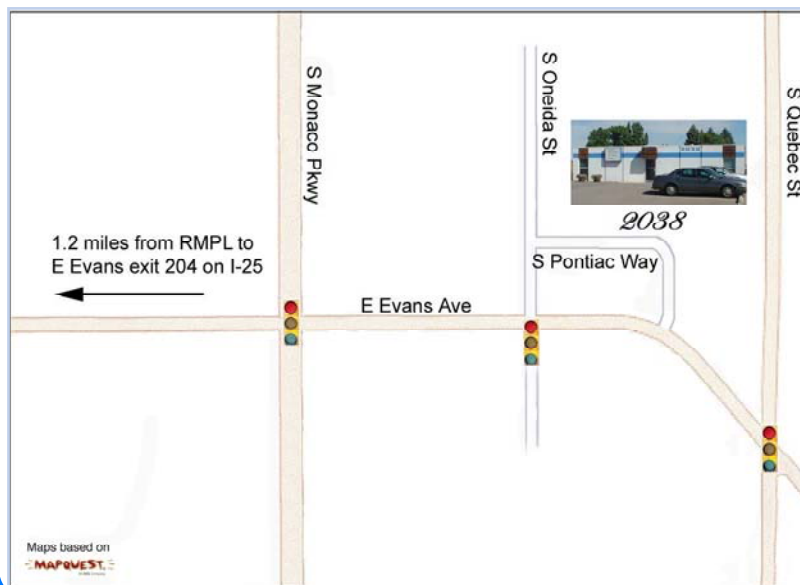
APRIL 12

Afghanistan in the Crosshairs (Part 2)
By Steve Nadler

This is Part 2 of the program that Steve gave on November 10, 2007. Steve has lived in Afghanistan and has a personal perspective on the country and its interesting postage stamps.

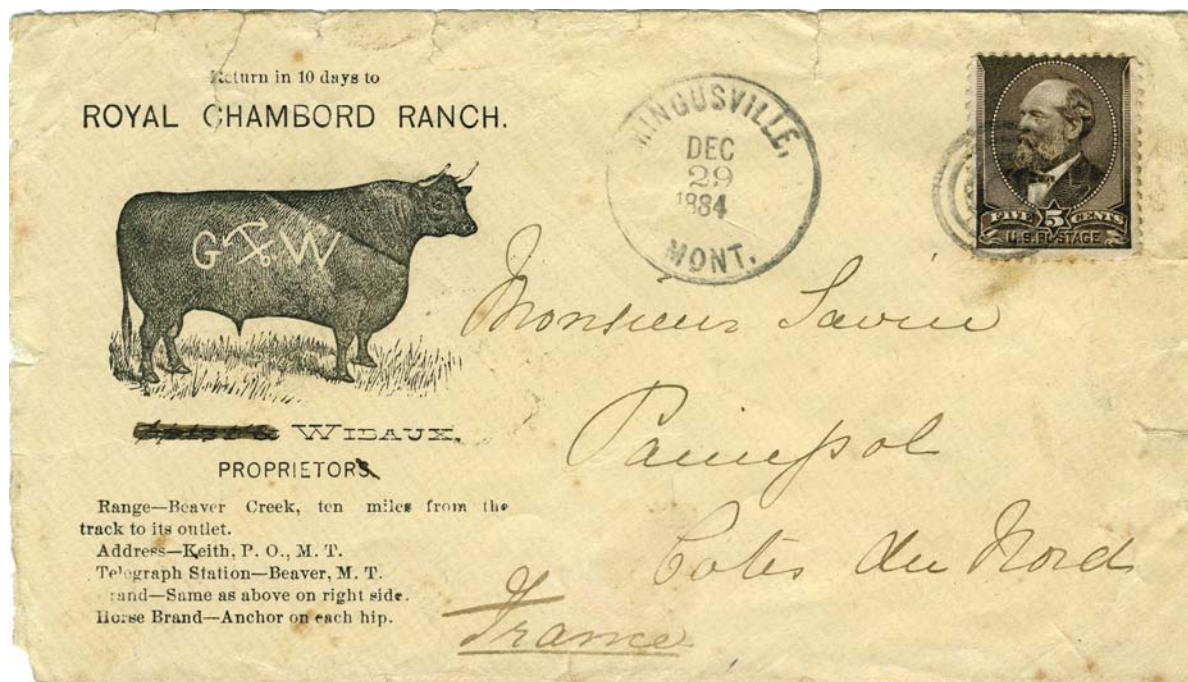


Visit the RMPL ...



Hours	
Monday	10:00 AM - 4:00 PM
Tuesday	10:00 AM - 4:00 PM
Wednesday	10:00 AM - 4:00 PM
Thursday	2:00 PM - 8:00 PM
Friday	10:00 AM - 4:00 PM
Saturday	10:00 AM - 4:00 PM
Sunday	Closed

My Favorite Cover *by Greg Frantz*



What's in a cover?

At first glance we have a Montana Territorial (MT) cover going to France. Territorial covers going overseas are neither common nor rare. This is an advertising cover, not for the usual hotel or business, but for a ranch. The ranch is described on the cover as located at "Beaver Creek, 10 miles from the track to its outlet."

The return address of Keith Post Office and Telegraph Station Beaver means this ranch was near a railroad. The Proprietor, Wibaux, lists one brand for his cattle and a different one for his horses. First I checked my gazetteers for 1920, 1950 and 1970 - but no Keith, Beaver or Mingusville.

My next stops were the internet and then the Rocky Mountain Philatelic Library. Now the colorful character comes to life. Pierre Wibaux came to the US in 1883 at age 25, one year prior to sending this letter to his homeland. Within that year he had become a partner with Gustavas Grisy and then bought Gustavas out. This is shown on the cover by the striking out of Grisy's name and the "s" in "proprietors." This cover gets more interesting as it unfolds.

The name of the original county in MT is Dawson, named after Keith Dawson. Thus the town name of Keith. Gustavas Grisy's wife's name was Minnie. After giving up ranching, the Grisys ran a general store and post office in Keith, MT. As new postmaster what better name for the town then MINnieGUSTaveVILLE (1884-1895)? Thus Keith, MT becomes Mingusville, MT.

The telegraph station is noted on the cover as being at Beaver MT, but there is no such town listed in the "Post Offices of Montana". The Northern Pacific RR built a railroad and telegraph station at its crossing at Beaver Creek. They called

it the Beaver Station. The town which grew up around the Beaver Station was called Keith (Keith Dawson, remember?) with a post office established July 17, 1882. Towns followed the railroads going west and Keith was the first development in MT after crossing the Dakota line. It became one of the largest cattle shipping points on the Northern Pacific. Cattle drives from deep in southern Texas headed to this area. Wibaux later grazed 40,000 head on 70,000 acres of open range.

The name Royal Chambord Ranch gives some insight into his character. Royal Chambord being the famous Royal raspberry liqueur of France. Son of a French textile manufacturer, Wibaux heard of the business opportunities on the prairies of the US and, against his father's wishes, decided to investigate. His father staked him with \$10,000. He first worked in the Chicago stockyards to learn the rudiments of the cattle trade. Then during his first year on the range lived in a dugout on Beaver Creek and worked as a common ranch hand. The cover was posted to the city of Paimpol, Cotes du Nord, a city facing the English Channel with notable fishing fleets, which perhaps may explain the anchor in the brand.

It must have been in this first year in MT that he formed the ranch with Gustavus Grisy. The brand shown on the cover did not survive after the partnership broke up. Later Wibaux created the well-known W-BAR brand for his large ranch holdings.

After barely surviving devastating blizzards Wibaux traveled to France a number of times to secure more capital, returning to Montana to rebuild his herds. He quickly became one of the largest landholders and ranchers in Montana.

In 1895 he had petitions circulated by his 25-30 cowboys and wouldn't let anyone enter or leave town without

signing the petition to change the town name from Mingusville to Wibaux. Later the county of Wibaux was created. In 1892 he funded the Wibaux House Museum which still operates today. He also designated money in his will for a statue of himself to “overlook the country I love so well,” and today it rests upon a prairie knoll near Wibaux. St Peter's Catholic Church in Wibaux is reported to be named for him. (Pierre-Peter?) What a guy!

He was buddies with Theodore Roosevelt and received some of Teddy’s cattle from Roosevelt’s ranch across the border in ND near Medora 35 miles east. Legend has it that Teddy got the name 4-eyes in a bar in Wibaux. Also that Teddy was a terrible cowhand and had no skills as a rancher.

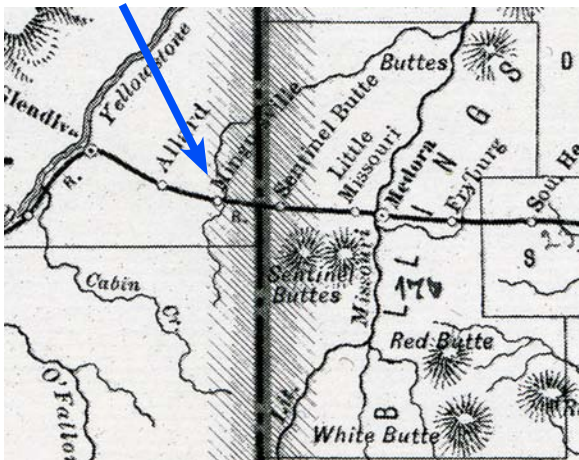
Searching the US census records from 1880 to 1930 I found no record of Wibaux or Grisy, only of Grisy’s son in Tucson. I find a record on the “Ship’s Manifest of Alien Passengers” where Pierre came back from France on April 15 1903 as a French citizen and again in April 3, 1904 as a U S citizen.

Pierre Wibaux died in 1913 at the age of 55. Today the town is located along Interstate 94 about 10-miles west of the North Dakota border. Earlier maps (below) show the various names the town held during Wibaux’s life.



THE ORIGINAL GRISY - WIBAUX BRAND (see cover)

MINGUSVILLE (1890 GN Railroad map)

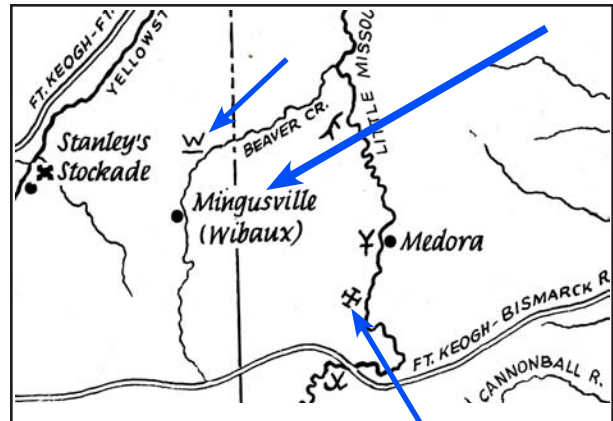


WIBAUX (Today)



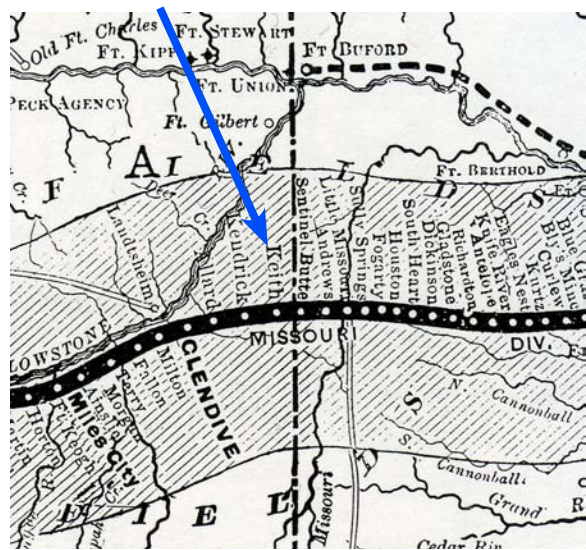
WIBAUX'S FAMOUS
W-BAR BRAND USED FOR
THE REST OF HIS CAREER

OLD MAP SHOWING TOWN
AND WIBAUX BRAND



KEITH (1883 NP map)

TEDDY ROOSEVELT'S RANCH



DONATIONS

The library thrives on the enthusiasm and generosity of its members. The following members have made donations to the library in the past two months. Thank you.

Robert M. Anderson	David L. Jarrett
Dick Axtell	Fred A. Jensen
Charles Baker	Brian V. Kelly
Carl Barna	Charles Klein
Nicholas Bede	Jim Lays
Art Berg	Neil Littlefield
Robin Bingham	Stan Luft
Bob Brown	Charles McClure, Jr
Tom Crank	Marisa Medina
Paul C. Crissman	Mrs. Joelle Raper
Ward R. Crowley	Carol Roy
Joanne Curran	Roger Rydberg
John Doyle	Charles A. Sandberg
Sue Dunn	Scandinavian
Harold Eason	Collectors Club
Peter C. Elias	Glenn Shaw
Nolan Flowers	Marc Silberman
Ms. Margaret Freeburn	Margaret M. Snyder
Gary Gibson	Linda Surbaugh
Marc Gonzales	Jack Van Ens
Sonny Gorsuch	Mrs. Emily H. Warner
Leland Greb	Kitty Wentworth
Jim Hartley	Martin Wilkinson
Gordon Hayes	Steve Wineteer
Ron Hill	Bob Wolf

NEW MEMBERS

We extend a warm welcome to those who have joined the library from January 1st to February 5th.

D. J. Hamilton, Denver, CO –
Collects Art: Stamps and Canceled used as graphics.

James E. Lee, Cary, IL, - Literature and Stamp Dealer.
Collects McHenry and Lake County Illinois.

Nam Le, Aurora, CO –
Collects Viet Nam and Topicals.

Shannon Duryea Lovins, Rockvale, CO –
Collects Pre-canceleds, European, and Oriental.

Robert B. Bingham, Aurora, CO

Tom B. Bailey, Sr, Mandeville, LA, -
Collects U.S., China (Mainland), and Morocco.

Bert P. Hanou, Greenwood, CO, -
Collects Netherlands.

SHOW SCHEDULES

BANANAPEX

Buena Vista, CO - April 12, 2008



Stamps for show and sale from 10-4
at the Buena Vista Community Center.
Call 719-395-8370 for more information.

ROCKY MOUNTAIN STAMP SHOW

Denver, CO - May 16-17-18, 2008



www.rockymountainstampshow.com
for complete information.

Exhibit and Bourse applications
now available

NORTH 25 STAMP BOURSE
Fort Collins, CO - April 19, 2008
970-484-4824

Rocky Mountain Philatelic Library

2038 South Pontiac Way, Denver, Colorado 80224

Phone: (303)759-9921

Email: rmpl@qwest.net

Internet: www.rmpldenver.org

APPLICATION FOR MEMBERSHIP

++ Please Print All Information Clearly ++

Name: _____
Last First MI

Address: _____
Street Apt. No.

City: _____ State Zip _____

Phone No.: (_____) _____

Email: _____

I am a member of the following national philatelic organizations:
(Please provide membership numbers if you know them.)

APS _____ USSS _____ ATA _____

Others: _____

My collecting interests are: _____

MEMBERSHIP LEVEL REQUESTED:

Note: Checkout privileges begin at the Contributing Membership level, or \$25 per year.

REGULAR MEMBER	[]	\$ 15.00 / YEAR	Payment Method:
CONTRIBUTING MEMBER	[]	\$ 25.00 / YEAR	Cash: _____
SUSTAINING MEMBER	[]	\$ 50.00 / YEAR	Check: _____
PATRON MEMBER	[]	\$ 100.00 / YEAR	# _____
SELECT MEMBER	[]	\$ 250.00 / YEAR	
BENEFACTOR MEMBER	[]	\$ 500.00 / YEAR	

Signature: _____ Date _____

Approved by: _____ Date: _____

The RMPL is an IRS 501(c)3 tax exempt organization.



What's Happening at the RMPL... *"Come and Enjoy the Activities"*

Monday, Tuesday, Wednesday, Friday, Saturday 10:00 AM - 4:00 PM
Thursday 2:00 - 8:00 PM. Closed Sundays and Holidays

MARCH 2008

- March 1** - Meeting 10:00 AM
Scandinavian Collectors Club
- March 1** - Meeting 2:00 PM
TOPIC -Topical Philatelists in Colorado
- March 5** - Meeting - Aurora Stamp Club
6:30 PM Trading; 7:30 PM Meeting &
Program
- March 8** - 9:00 AM
Second Saturday at the RMPL
Program by Joy and Rick Wall
"Stamps and Travel to Rwanda"
- March 8** - Meeting - 10:00 AM
Mexico/Latin America Study Group
- March 8** - Meeting - 2:00 PM
Universal Ship Cancellation Society
U.S.S. Colorado Chapter
- March 9** - Meeting - 2:00 PM
Machin Study Group
(RMPL open Sunday for this meeting only)
- March 13** - Meeting - 6:30 PM
U.S. Philatelic Classics Society
Rocky Mountain Chapter
- March 15** - Meeting - 9:30 AM - Noon
Metro Denver Young Stamp Collectors
Club
- March 15** - Meeting - 1:00 PM
Denver Germany Stamp Club
- March 22** - Workshop - 10:00 AM
RMSS/RMPL Exhibiting Workshop
(Please call for reservations.)
- March 25** - Meeting - 7:30 PM
Rocky Mountain Stamp Show
Committee
- March 26** - Meeting - 7:30 PM
Israel Stamp Club

APRIL 2008

- April 2** - Meeting - Aurora Stamp Club
6:30 PM Trading; 7:30 PM Meeting
- April 5** - Meeting 10:00 AM
Scandinavian Collectors Club
- April 5** - Meeting 2:00 PM
TOPIC -Topical Philatelists in Colorado
- April 12** - 9:00 AM
Second Saturday at the RMPL
Program by Steve Nadler
"Afghanistan" (Part 2)
- April 12** - Meeting 10:00 AM
Mexico/Latin America Study Group
- April 12**-11:30AM Meeting- Rocky Mountain
Aerophilatelic group.
- April 12** - Meeting - 2:00 PM
Universal Ship Cancellation Society
U.S.S. Colorado Chapter
- April 13** - Meeting - 2:00 PM
Machin Study Group
(RMPL open Sunday for this meeting only)
- April 19** - Meeting - 9:30 AM - Noon
Metro Denver Young Stamp
Collectors Club
- April 19** - Meeting -1:00 PM
Denver Germany Stamp Club
- April 22** - Meeting - 7:30 PM
Rocky Mountain Stamp Show
Committee
- April 23** - Meeting - 7:30 PM
Israel Stamp Club
- April 26** - Workshop - 10:00 AM
RMSS/RMPL Exhibiting Workshop
(Please call for reservations.)

Scribblings is published bimonthly by the Rocky Mountain Philatelic Library, 2038 S Pontiac Way, Denver, CO 80224. The Rocky Mountain Philatelic Library is a chartered Colorado nonprofit corporation. Membership subscriptions over that for the regular membership, and donations of appropriate philatelic materials, are deductible for U.S. income tax purposes. The RMPL is an IRS designated 501 (c)3 charitable organization.

RMPL BOARD OF DIRECTORS

President: Ron Mitchell - Operations Manager: Don Beuthel - Vice-President: Jim Kilbane
Corresponding Secretary: Robert Brown - Recording Secretary: Maury Pautz - Treasurer: Bob Blatherwick
At Large: Tim Bartshe - Sergio Lugo - Steve Schweighofer - Dalene Thomas - Emeritus: James L. Ozment and John H. Willard