

# Scribblings

...from the Rocky Mountain Philatelic Library



Ellengail Beuthel, Librarian...

Vol. 15 - No. 6  
www.rmpldenver.org

2038 So. Pontiac Way, Denver, CO 80224  
303.759.9921

November - December 2007  
Email - rmpl@qwest.net



The most popular seasonal cancel...

## AUSTRIA'S CHRISTKINDL

By Steve Schweighofer, RMPL Board Member

### In this Issue...

Auction Report.....	4
New Members .....	4
Pacetti to National Board.....	4
Kid s Club Fun .....	4
Donations .....	5
Early Philatelic Magazines .....	6
A Rockwell Kent Christmas 1939 ...	7
Book Review.....	8
Additions to the Shelves.....	8
Membership Application .....	11
Schedule of Events.....	12



The post office in Christkindl, Austria is located in a 19th century hotel.

identified with Santa Claus in the United States and other countries. Kris Kringle, an alternate name for Santa Claus, came from the German Christkindl.

About 1947 the Austrian Post Office gave some thought to having a Christmas-time post office for special treatment of letters for the children and for stamp collectors. In 1950, the post office selected the town of Christkindl for the location of the post office, which was set up in a small room at the 170-year-old restaurant in the Hotel David, which is directly behind the Christkindl church.



The Church of Heavenly Mercy stamp was issued in 1958, Scott No. 625. The post office shown above is located immediately behind the church.

The church, officially named the Church of Heavenly Mercy, was featured on a stamp in Austria's buildings definitive series of 1957-1970.

In 1950 Christkindl was located in the Russian occupation zone. The occupying forces apparently saw something sinister in this operation. Mail with a green angel carrying a Christmas tree was allowed to be sent only within Austria. The event was obviously a success with just over 42,000 items cancelled – all by hand by postal employees brought in for

# RMPL

Continued on page 2

In the Upper Austrian town of Christkindl, the post office applies special cancellations to millions of mail pieces every Christmas season. These special cancellations celebrate Christkindl, or the Christ child, who many European children believe brings them gifts on Christmas Eve. Saint Nicholas is the patron saint of children, among other groups, and has been



Computer enhanced.

The first Christkindl cancel in 1950 shows the Christ child. As with our Santa Claus, Christkindl traditionally brings gifts to children on Christmas morning.

### Second Saturday Programs 9:00 - 10:00 AM at the RMPL...

November 10  
"Afghanistan in the Crosshairs"  
by  
By Steve Nadler

December 8  
"State Revenue Stamps"  
by  
Marc Silberman

### About the Author...

Steve Schweighofer works for the USPS. Thanks to his donations, the RMPL has a wonderful collection of philatelic literature from Austria.



This is a "Happy Childhood" semi-postal stamp, issued in 1949, Scott No. B263.

the special post office. The Christkindl Post Office today handles about 2.5 million pieces of mail each year, making the annual Christkindl cancellations among the most popular special cancellations in the world. Reportedly, 78 million have been canceled since 1950. Interest in Christkindl and its cancellations has increased so much that today a staff of 21 is needed to fulfill requests. About 5000 letters from children

to the Christkindl are received each year, and postal employees answer all of them.

Mail may be dropped directly for canceling at Christkindl, or may be mailed at any Austrian post office requesting the cancellation "Über Christkindl". The clerk then applies a special label. These labels have evolved over the years, resulting in 7 major styles. The label is usually cancelled by the sending office and the postage stamp is only cancelled upon arrival in Christkindl with the



The cancels are applied by hand.



A cancel from Christmas Eve, 1967. The cover received an "über CHRISTKINDL" label when it was mailed in Vienna. It was sent to Christkindl for the special cancel and remained back to the addressee in Vienna.



Cancel from New Year's Eve, 1952.

special cancellation.

Except for four of the first five years, a different cancel was used every year. In the 1965/1966 season, because of the tremendous popularity of the Christkindl cancellations, the Post Office decided to issue two of these during each Christmas period. The first cancellation shows the Christ Child and is usually in use from November 27th through December 26th. The second cancellation shows the Three Wise Men and is in use from December 27th through January 6th.



These are considered Austria's first Christmas stamps, issued in 1937, Scott No. 388-89.

The first Austrian stamps considered Christmas stamps were issued in 1937, and pictured a vase of roses and signs of the Zodiac. These were officially issued as "good luck greeting stamps" on December 13th, intended for New Year greeting cards.



The Silent Night composers stamp, issued in 1948, Scott No. 558.

This was the last issue of the First Republic (1918 -1938). The next Christmas-related stamp was issued in 1948, a few years after

Continued on page 3

the German occupation. It pictures Gruber & Mohr, the composer and writer of the carol "Silent Night" on its 130th anniversary.

Other "Christmas" stamps appeared sporadically until 1967 and from then on stamps were issued annually with religious themes, mostly picturing reproductions of statues and paintings. Austria typically issues about 1/2 to 2 1/2 million of



*The Post Bus to Christkindl is a popular tourist attraction.*

a commemorative issue, but about 10 million for a Christmas stamp because of the extra popularity.

Today, patrons may ride the 50-year-old antique "Old Timer" Post Bus from Steyr (about 2 miles away = 15 minutes) to Christkindl. The bus, with its three-toned horn, is a favorite of both young and old. The driver, wearing an original uniform, cancels the bus tickets. They are also collectible. He picks up the Christkindl letters from a special collection box at the Stadtplatz (Town Square) and personally delivers them to the Christkindl Post Office.

Collecting everything Christkindl today involves special cancellations from other locations such as the site of the Gruber and Mohr Museum

and Memorial Chapel and methods of transport such as balloon flights, horse-drawn post coach, the "Old Timer" Post Bus, special flights and to date another 26 cataloged Christmas-related events. As with many collectibles, the first or earliest are the most expensive. Covers carried on the 1961 balloon flight catalog more than 400 Euros and covers bearing the much-forged 1950 green cancels are valued at up to 1000 Euros.



*The cancel used on 2004 mailings. 4411 is the Christkindl postal code.*

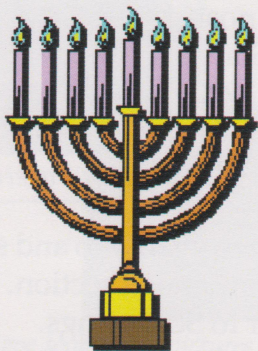


*The shrine built by an epileptic man to the Christ Child in 1691.*

The story of Christkindl, and eventually the cancels on mail, goes back to the year 1691 when the local church organist and choirmaster made a small shrine in the woods which he visited to pray for relief from epilepsy. His epilepsy disappeared and the little shrine to the Christ Child became a popular focal point for pilgrimages.

By 1709 the Church of Heavenly Mercy was completed nearby and the town of Christkindl grew up around it.

Today, the centuries-old story is kept alive with the help of the annual Christkindl cancel.



# Happy Holidays!

From the Volunteers at the  
Rocky Mountain  
Philatelic Library



## AUCTION REPORT

A big thank you to all the bidders at our first annual "Bulk Lots" auction in September. Sales Manager Sergio Lugo reports almost \$6,500 was raised.

Since the library is all volunteer with no paid positions, all the money will go into operations. This is an important contribution to our routine general fund expenses and the funds established by the board for acquisitions, expansion, and the possibility of hiring a part time librarian sometime in the future.

There were 36 mail bidders and 37 floor bidders and they bought 64 of the 70 lots for between \$13 and \$660.

Details of auction realizations may be found on our web site, [www.rmpldenver.org](http://www.rmpldenver.org). A download is located at the bottom of the home page.

Sergio is already planning for another bulk lots auction sometime after May of next year.

## RMPL MEMBERS IN PRINT

*Mekeel's and Stamps Magazine* recently published another article by Carl Barna. Carl's first article about how he returned to stamp collecting appeared in the December 1, 2006 issue. In the August 3, 2007 issue, Carl describes his first foray into philatelic exhibiting.

## WELCOME NEW MEMBERS

Rick Windmeyer - Fort Lupton, CO  
Collects United States, Benelux and Scandinavia

Nitin Deshpande - Denver, CO  
Collects Pre-1935 United States, Federal Duck Stamps, and Errors

Steve W. Cox - Denver, CO  
Collects Automotive Topicals

Danny L. King - Colorado Springs, CO  
Collects Everything

Dean MacKinnon - Rockvale, CO

Joan E. Anderson - Ypsilanti, MI  
Collects Handpainted FDC's, Scott 2361 FDC's, U.S. Mint and Used, Postal History from towns named Logan (Maiden name)

John W. Stafford, II - Brush, CO  
Collects U.S. Possessions, BOB, Revenues

*Scribblings...November - December 2007*

## KID'S CLUB FUN



"I know it has to be here somewhere..."

A group of youngsters at a recent meeting of the Metro Denver Young Stamp Collectors Club went through a 16-foot-long pile of stamps spread out on big tables.

They had a scavenger hunt which was a big hit. Their assignment was to find 20 different kinds of items related to the stamps including sprayed on cancels, semi-postals, commemoratives, etc.

The club meets the 3rd Saturday of every month at the library from 9:30 AM to noon. Boys and girls ages 8 to 16 are welcome.

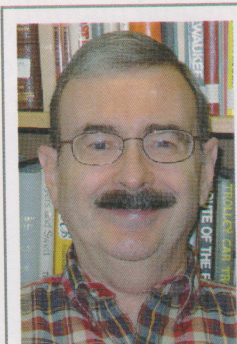
## PACETTI TO CLASSICS SOCIETY BOARD

RMPL volunteer Stephen B. Pacetti has been elected to the U.S. Philatelic Classics Society Board of Directors. He also serves as the Society's regional vice president for AZ, CO, KS, ND, SD, NE, NM, NV, & UT.

The Classics Society is the only organization that studies in depth the stamps and postal history of the United States from the Colonial era to 1900. It was founded as the 3¢ '51-'57 Unit of the American Philatelic Society in the 1940s.

Steve joined the RMPL ten years ago and serves as the curator of the auction catalog section. He is also a frequent contributor to *Scribblings*.

We congratulate him on his new position with the U.S. Philatelic Classics Society and wish him well with his new responsibilities.



Steve Pacetti

## DONATIONS

Philatelic items and cash donations are always welcome. We never take any donation for granted and recognize that the generosity of our members and other friends is an important part of the success of the Rocky Mountain Philatelic Library. We thank all who gave during August and September:

Peter Adgie, Paul Albright, John Aycrigg, Steve Bahnsen, R. Timothy Bartshe, Howard Benson, Donald G. Beuthel, John H. Bloor, Buster Boatman, Dan Brickley, Robert L. Brown, Roger S. Cichorz, Mildred Clark, Joe Crosby, Don Dhonau, Sue Dunn, David M. Ellis, Ed Foard, Kenton Forrest, Sonny Gorsuch, Joan Grady, Richard Graves, Leland Greb, Louis A. Greb,

Eddie Hackstaff, Jack Harlan, Joan E. Havercroft, Heather Gardens Stamp Club, and Mark Holdeman.

Also, Jason Knezel, Jim Lays, Frank Leitz, Neil Littlefield, Arne and Maija Ljunchag, Richard Love, Charlie McClure, Dasa Metzler, Mike Milam, Rosemary Monark, Derrick Moss, F. Muhler, O. R. Olson, William Plachte, Brian Plane, Carol Racklin-Siegel, William F. Rapp, Jim Reichman, Andrea G. Richardson, Owen Robb, Dick Ruth, Roger Rydberg, Scandinavian Collectors Club, Stephen Schumann, Col. David Snyder, Dale Speirs, Duane Spidle, Colin W. Spong, William A. Stolfus, Universal Ship Cancellation Society Colorado Chapter, Mark Vainer, Emily Warner, Mike Wenkel, and Steve Wineteer.

## SECOND SATURDAY PROGRAMS



Second Saturday programs are sponsored by the library and attract a friendly group of folks who are interested in a specific subject, or who are interested in learning more about an area of philately that may be new to them.

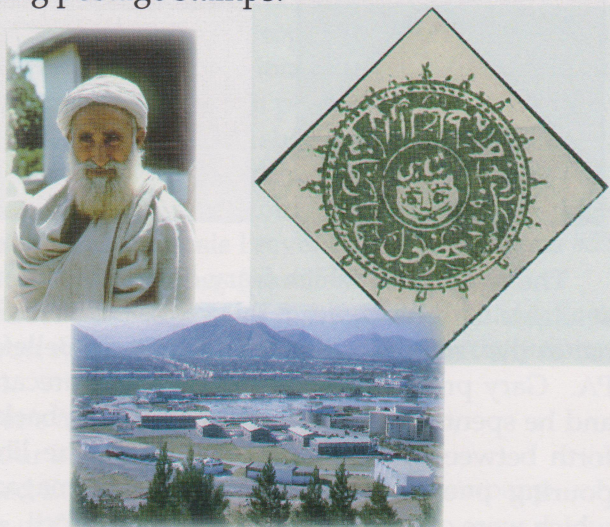
The programs begin at 9:00 AM and are over by 10:00 AM. Donuts and coffee are complimentary and all are welcome.

### NOVEMBER 10

#### *Afghanistan in the Crosshairs*

By Steve Nadler

Steve lived in Afghanistan for two years in the 1960s and has kept up with public and religious policies and changes, and its interesting postage stamps.



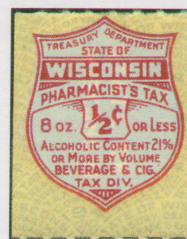
Steve took many pictures of Afghanistan and her people while he was there. The program will emphasize stamps and covers.

### DECEMBER 8

#### *State Revenue Stamps*

By Marc Silberman

Marc will graphically show how, during the depression, state revenues helped get the country's gears moving again.



Marc's state revenue collection includes a tax stamp from Argonaut Liquors in Denver (top), a Wisconsin pharmaceutical liquor tax stamp (bottom left), and a Louisiana cigar tax stamp with interesting period graphics.

# EARLY PHILATELIC MAGAZINES

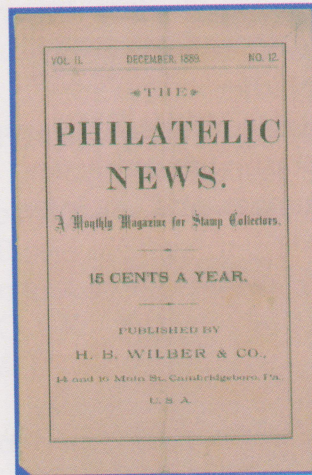
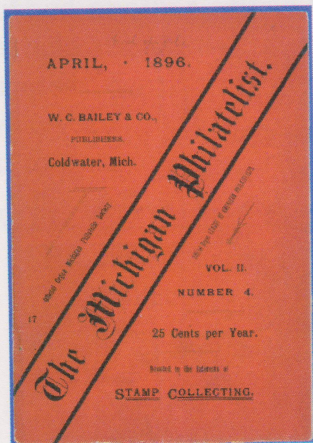
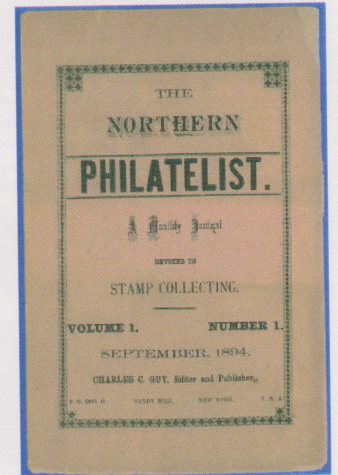
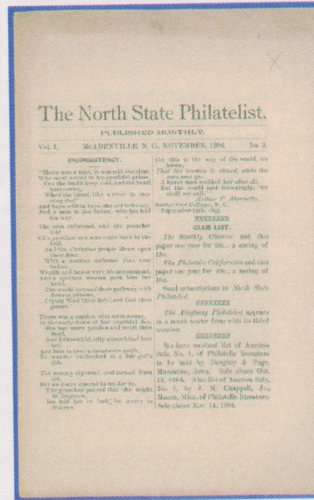
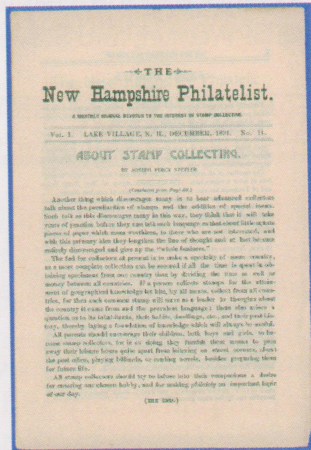
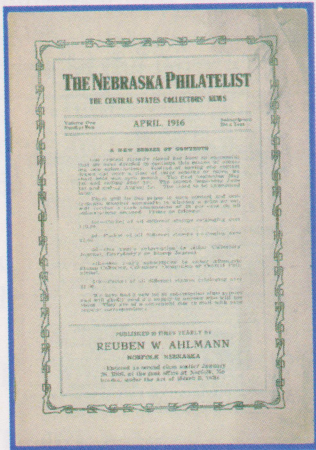
RMPL member Gary Hendren of Maryland Heights, MO recently donated 101 titles of philatelic magazines, mostly from the late 1800s.

Gary sent a complete inventory, and this helped with merging them into our collection.

There are almost 400 individual issues, so we have some nice runs of some of the titles. For instance, *The Pipestone Philatelist*, published in Pipestone, MN, printed 14 issues from 1894 to 1896, and the library has all of them.

- Hartland, WA (*Evergreen State Philatelist*)
- Lake Village, NH (*The Curiosity World*)
- Leominster, MA (*Collectors' World*)
- McAdenville, NC (*North State Philatelist*)
- Norfolk, NE (*The Nebraska Philatelist*)

The earliest publication in the group, from 1881, is *The Collector's Library Table*, printed in Waterloo, NY and New York City. It lasted for 13 issues and the library now has eight of them.



Some, like *The Philatelist*, printed in Denver, lasted only an issue or two. While there were strictly local publications, others probably had high hopes of a large national or international circulation. One of them, *Stanley Gibbons Monthly Journal*, survives today as *Stamp Monthly*.

It is interesting how many of the papers originated in small towns including:

- Augusta, ME (*Capital City Philatelist*)
- Chariton, IA (*Chariton Gazette*)
- Delavan, WI (*The Badger State Philatelist*)

The magazines which Gary donated were made available to participants at this year's Summer Seminar at the American Philatelic Society in Bellefonte, PA. Gary presented a session on silent precancels, and he spent a great deal of time running back and forth between the seminar rooms and the library, pouring over and selecting from the magazines which were offered. We appreciate his effort!

Sergio Lugo has checked in the donation and cataloged it, and the old publications are now easily available to RMPL patrons.

# A Rockwell Kent Christmas 1939

by Ron Hill, RMPL Volunteer



Red "E"



Red "S"



Ultramarine "D"



Ultramarine "U"

World famous artist, author and illustrator Rockwell Kent designed the 1939 Christmas Seal. An interesting collectable item, this seal can be found in a number of varieties. The sheets were offset printed by four different printers. Each printer added its own identifying mark (initial letter) to each sheet.

However there is a flaw in the frame of the seal in position #29. This appears only in the first and second printings and was corrected before the third printing.

Ultramarine D: Edwards and Deutsch Lithography Co. A flaw in position #76 has a "double eye-brow" on the figure in the illustration.

Ultramarine U: United States Printing & Lithograph Co. No errors or flaws found.

Booklets were also printed which contain 20 seals (5 panes of 4). Perforations for the booklets were different than the sheets and contain no slogan seals.

## Experimental Proofs

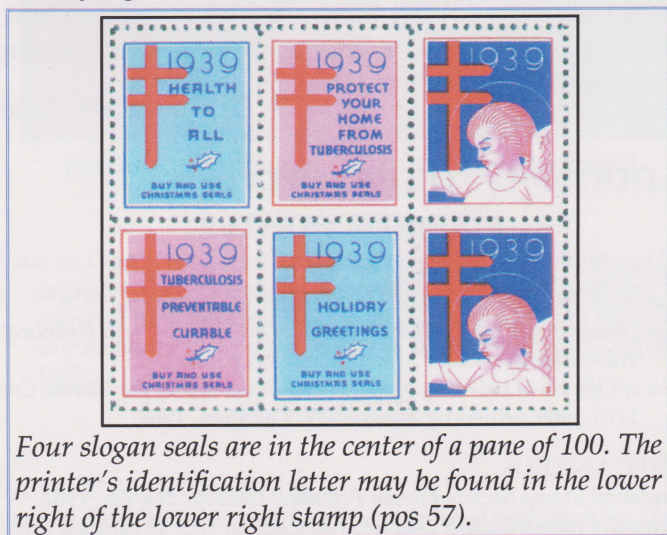
Many variations of colors, screens, and design occur in negative-maker proofs which can be found and contain small modifications made by Kent and the printers. Also imperforate sheets, pairs and strips can be found.

Two essays for a Deluxe seal were produced but never sold. One was printed with a silver background and another on metallized paper.

Not just stamps, but also Christmas Seals, can lead into fascinating research and adventures of collecting. Complete information



1925 Norway  
design by Kent.



Four slogan seals are in the center of a pane of 100. The printer's identification letter may be found in the lower right of the lower right stamp (pos 57).

The sheet contains 100 seals, 10 across; and 10 deep. Counting from the top, left-to-right the seals are identified by plate-position number. The identifying printer's mark is found in position #57, for example.

In the center of each sheet are four "slogan seals" (designed by a different artist). These slogans are Health to All (pos #45); Protect Your Home From Tuberculosis (pos #46); Tuberculosis Preventable Curable (pos #55); and Holiday Greetings (pos #56).

Directly to the right of this lower right hand slogan seal you will find the seal (pos #57) with the printer's initial.

## Printer's Marks

Four initials are used: E, S, D & U.

Red E: Eureka Specialty Printing Company. No errors or flaws found.

Red S: Strobridge Lithographing Company. The first printing has no printers mark. The red letter "S" was added for the second and third printings.



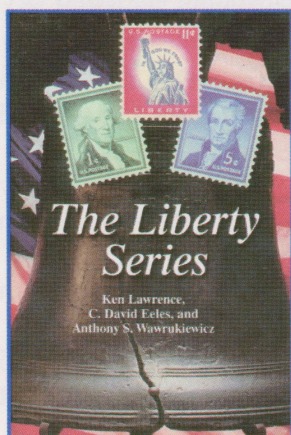
Kent's artwork for Moby Dick is credited with popularizing the book.

on U.S. Christmas Seals may be found in Green's Catalog on the shelves of the Rocky Mountain Philatelic Library. Rockwell Kent also designed the Norway "polar bear" series of seven airmail stamps of 1925 (shown above).

He was honored on the U.S. 2001 American Illustrators series with a 34¢ stamp showing an illustration from the book Moby Dick (shown at left).

## BOOK REVIEW

*The Liberty Series*, by Ken Lawrence, C. David Eeles, and Anthony S. Wawrukiewicz, published 2007 by the American Philatelic Society, 262 pages, 6" x 9" softbound. All illustrations are in color. Available postpaid for \$60, or \$48 for APS members from American Philatelic Society, 100 Match Factory Place, Bellefonte, PA 16823-1367. Or order online at [www.stamps.org](http://www.stamps.org).



For many years 20th century stamps and postal history were held in relatively low regard. They weren't "classics". Now that we are in the 21st century, and the second millennium (in western civilization's somewhat provincial world view), 20th century stamps have become "classics", or at least they are respectable enough to collect and exhibit competitively. This elevation

can be attributed to, among others, the late William S. "Bill" Dunn, past president of the Bureau Issues Association (now the United States Stamp Society) and one of the founders of the RMPL. According to Ken Lawrence's Dedication, "William S. Dunn inspired this book, but did not live to see it completed. ... His main interest was 'the ordinary definitive stamp that truly carried the mail.' He collected and exhibited Liberty series stamps and covers long before anyone else did ...".

This book is, for now, the authoritative publication on this fascinating series of stamps and postal stationery, issued from 1954 to 1980 (although the 25¢ Paul Revere coil was not withdrawn until 1987).

The first chapter points out the many innovations in printing and graphic technology associated with this series, considered to have "... ushered in the modern era of United States stamp production." There are ten more chapters covering all aspects of the Liberty series stamps,



Page from *The Liberty Series* showing examples of covers and rates to foreign countries.

*Scribblings...November - December 2007*

postal stationery and postal history and ending with "References for Further Study." There is a general index, a stamp index, and short biographies of the three authors, all of whom are prominent students, writers, and exhibitors of the Liberty Series and other philatelic subjects. There are abbreviated rate tables and chapters showing usages on both domestic and international mail. The book is extensively illustrated, in color, with examples of many covers and stamp varieties.

The significance of *The Liberty Series* goes beyond the liberty series. It can serve as a template for collecting other series of modern U.S. definitives, including the Prominent Americans (1965-1978), the Americana series (1975-1981), the Great Americans (1980-1985), and the ongoing "Flag over Whatever" series, as I like to call them.

This book is a fitting memorial to Bill Dunn and to his love for United States definitive stamps and a valuable reference for collectors of modern stamps and postal history.

...John Bloor

## ADDITIONS TO THE SHELVES

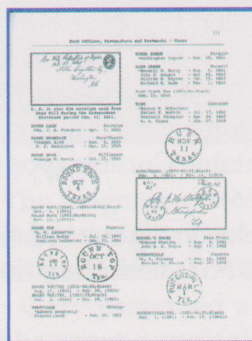
### UNITED STATES

#### GENERAL REFERENCE

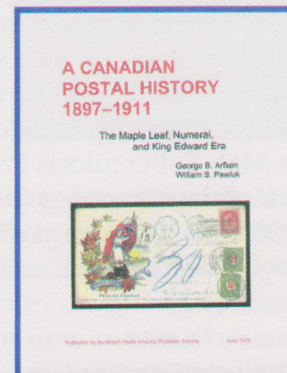
- American Philatelic Periodicals* by Chester M. Smith, Jr., 1978.
- The Liberty Series* by Ken Lawrence, C. David Eeles, and Anthony S. Wawrukiewicz, 2007. (See review on p. 8.)
- List of Officers of the Navy of the United States and of the Marine Corps 1775-1900*, edited by Edward W. Callahan, 1969.

#### PRECANCELS

- Precancel Stamp Society Bureau Precancel Catalog, 2nd Ed.*, 1982.
- Precancel Stamp Society Official Style Chart of U.S. Contracted Precancel Devices, 3rd Ed.*, 1985.
- The Precancel Stamp Society's Town and Type Catalog of the United States and Territories, 6th Ed.*, 1998.



Confederate Postmasters page



Canadian Postal History

### CONFEDERATE STATES

- Confederate Post Offices, Postmasters and Postmarks of the Trans-Mississippi Department* by Warren H. Sanders and Erin R. Gunter, 2007.

Continued on page 9

Page 8

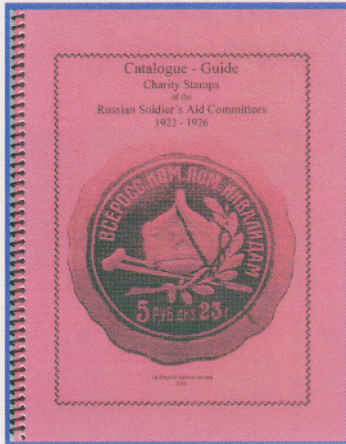


## CANADA

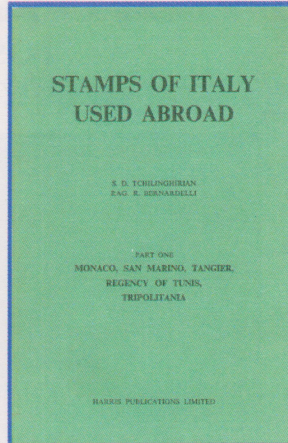
*A Canadian Postal History 1897 - 1911: The Maple Leaf, Numeral, and King Edward Era* by George B. Arfken and William S. Pawluk, 2006.

## MEXICO

*The Cancellations of Mexico 1856-1874* by Joseph Schatzkes, 1964.  
*Characteristics de Algunas Falsificaciones de Timbres de Mexico* [Characteristics of some Forgeries of Mexican Stamps] by Roberto Liera Gutiérrez, 2007.



Russian Charity Stamps



Italy Used Abroad

## CENTRAL AMERICA

*Notes on Central America; Particularly the States of Honduras and San Salvador: Their Geography, Topography, Climate, Population, Resources, Productions, etc. etc. and the Proposed Honduras Inter-Oceanic Railway with Original Maps and Illustrations* by E.G. Squier, 1855.

## EUROPE

### GENERAL REFERENCE

*Austrian Post Offices Abroad, Part Two: Austrian Lloyd: Black Sea Lines; All Lines (1888-1914)* by S.D. Tchilinghirian and W.S.E. Stephen, 1962.  
*Charity Stamps of the Russian Soldier's Aid Committees 1922-1926*, Translated by K.R. Peczkowski, 2001.  
*Postmarken von Osterreich (An Austria Specialized Catalog)* by Ingenieur Edwin Müller, 1927.  
*Tangier, Regency of Tunis, Tripolitania* by S.D. Tchilinghirian and Rag. R. Bernardelli, 1963.  
*Stamps of Italy Used Abroad, Part One: Monaco, San Marino, Tangier, Regency of Tunis, Tripolitania* by S.D. Tchilinghirian and Rag. R. Bernardelli, 1963.  
*Stamps of Italy Used Abroad, Part Two: Tripolitania, Cyrenaica, Egypt, Crete and Green Aegean Islands* by S.D. Tchilinghirian and Rag. R. Bernardelli, 1964.  
*Stamps of Italy Used Abroad, Part Three: Dodecanese: Calymnos to Castellorizo* by S.D. Tchilinghirian and Rag. R. Bernardelli, 1965.  
*Stamps of Italy Used Abroad, Part Four: Dodecanese: Chalki to Piscopi* by S.D. Tchilinghirian and Rag. R. Bernardelli, 1965.  
*Stamps of the Russian Empire Used Abroad, Part One: Constantinople, The Danubian Principalities, Bulgaria and Roumelia* by S.D. Tchilinghirian and W.S.E. Stephen, 1957.  
*Stamps of the Russian Empire Used Abroad, Part Two: The Black Sea and Aegean Ports, Syria, Palestine, Egypt, Crete and Ship Mail in the Levant* by S.D. Tchilinghirian and W.S.E. Stephen, 1958.

*Scribblings...November - December 2007*

Europe, continued

*Stamps of the Russian Empire Used Abroad, Part Three: Persia, The Khanates of Bukhara and Khiva and Sin-Kiang* by S.D. Tchilinghirian and W.S.E. Stephen, 1958.  
*Stamps of the Russian Empire Used Abroad, Part Four: Uryankhal, Mongolia, China Proper, The Lyaotung Leasehold* by S.D. Tchilinghirian and W.S.E. Stephen, 1959.  
*Stamps of the Russian Empire Used Abroad, Part Five: Manchuria; Chinese Eastern Railway* by S.D. Tchilinghirian and W.S.E. Stephen, 1959.  
*Stamps of the Russian Empire Used Abroad, Part Six: Ship Mail to Korea and Japan; Russian-American Supplement* by S.D. Tchilinghirian and W.S.E. Stephen, 1960.

## FRANCE & COLONIES

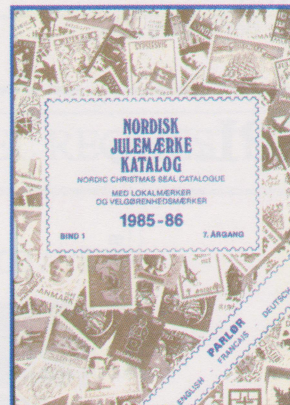
*Die "Papillons" von Metz oder Die Beiden Ballonposten von Metz (The "Butterflies" of the City of Metz or Balloon Post of Metz)* by Ernst M. Cohn, 1976. [Ed note: This book was placed under Germany in error in the last issue.]

## GREAT BRITAIN

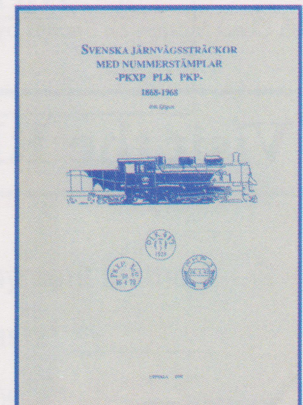
*Devon & Cornwall Postal History 1500-1791* by David B. Cornelius, 1973.  
*Unpaid and Underpaid Mail 1840 to 1921: England and Wales*, by R. I. Johnson, 1982.

## SCANDINAVIA

*Catalog of Scandinavia Revenue Stamps, Volume 1: Denmark* by Peter Poulsen, 1989.  
*Danske Tekst-Maskinstempler 1924-1982* [Danish Machine Cancells] by Helge Truelsen, 1983.  
*Handbok över Svenska Post-och Makuleringsstämplor 1685-1951* by Herman Schultz-Steinheil, 1952.  
*Katalog over Danske Firmaperforeringer 2001* [Catalog of Danish Perforations] by Ove Køster-Kofod, Ole Hansen and Kaj Mathiesen.



Nordic Christmas Seals



Swedish Railroad Cancells

*Nordic Christmas Seal Catalogue Volumes 1 & 2* by Jørgen Christoffersen, 1985-86.  
*Norske Maskinstempler med Tekst 1903-1978* [Machine Cancells of Norway] by the Philatelic Federation of Norway, 1978.  
*Posttoimipaikat ja Ohjousohjeet; Postanstalterna Jämte Dirigeringsdi- rektiv* [Postal Routes and Post Offices of Finland], 1968.  
*Svenski Järnvägssträckor med Nummerstämplor: PKXP, PLK, PKP, 1868-1968* [Swedish Railroad Cancells] by Erik Sjögren, 1990.  
*Svenska Maskinstämplor 1891 -1989* [Machine Cancells of Sweden] by Leif Bergman, Gunnar Dahlstrand and Owe Svahn, 1989.

Continued on page 10

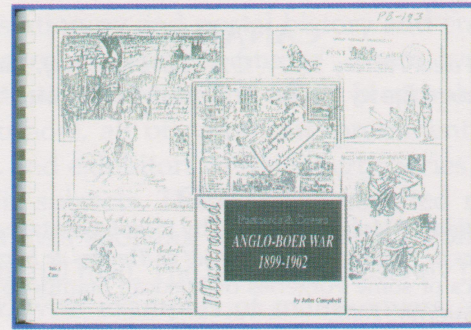
Page 9



Equatorial Guinea Catalog



South Africa Catalog



Anglo-Boer War

**POSTCARDS**

Anglo-Boer War 1899-1902 by John Campbell, 1992.

**AFRICA**

*The South African Stamp Colour Catalog, 9th Ed., 1984.*  
*The Stamp Catalogue of the Republic of Equatorial Guinea, published by Investamps, Inc., 1975.*

**ASIA AND THE PACIFIC OCEAN**

*Burma Postal History* by Gerald Davis and Denys Martin, 1971.  
*From Ships to Helicopters (in New Zealand)* by E.A. Crome, 1983.

**AIRMAIL**

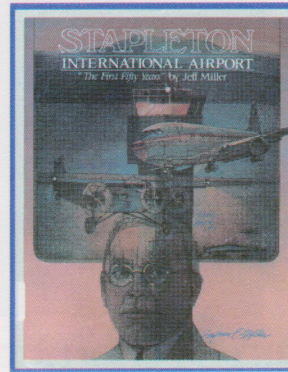
*Interflug: First Flight Catalog, 1972-1979 -- East German State Airline, Part 2, [no author], [no date].*

**POLAR**

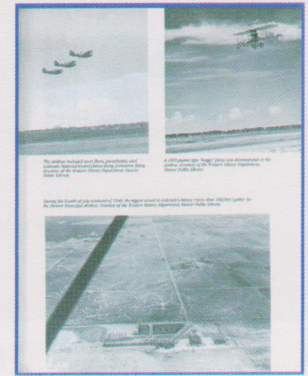
*Stars, Stripes & Ice: Postal History and Life of American Drifting Stations, Icebreakers and Submarines in the Arctic Ocean* by Franco Giardini, Federico Masnari and Enrico Garrou, 2006.

**TOPICALS**

*Jewish Chess Masters on Stamps* by Felix Berkovich, 2000.



Stapleton History



Stapleton History page

**COLORADO AND THE WEST**

*Stapleton International Airport: The First Fifty Years* by Jeff Miller, 1983.  
*Texas Postal History Handbook* by Charles Deaton, 1981.

**MISCELLANEOUS**

*Tips for a Youth Area at a Philatelic Show* by the American Philatelic Society Youth Activities Committee, 1988.

**Visit the RMPL ...**

1.2 miles from RMPL to E Evans exit 204 on I-25

3.5 miles from RMPL to E Iliff Exit 5 on I-25

Hours  
 Monday ..... 10:00 AM - 4:00 PM  
 Tuesday ..... 10:00 AM - 4:00 PM  
 Wednesday ..... 10:00 AM - 4:00 PM  
 Thursday ..... 2:00 PM - 8:00 PM  
 Friday ..... 10:00 AM - 4:00 PM  
 Saturday ..... 10:00 AM - 4:00 PM  
 Closed Sunday

# Rocky Mountain Philatelic Library

2038 South Pontiac Way, Denver, Colorado 80224

Phone: (303)759-9921

Email: [rmpl@qwest.net](mailto:rmpl@qwest.net)

Internet: [www.rmpldenver.org](http://www.rmpldenver.org)

## APPLICATION FOR MEMBERSHIP

++ Please Print All Information Clearly ++

Name: \_\_\_\_\_  
Last First MI

Address: \_\_\_\_\_  
Street Apt. No.

City: \_\_\_\_\_ State Zip \_\_\_\_\_

Phone No.: ( \_\_\_\_\_ ) \_\_\_\_\_

Email: \_\_\_\_\_

I am a member of the following national philatelic organizations:  
(Please provide membership numbers if you know them.)

APS \_\_\_\_\_ USSS \_\_\_\_\_ ATA \_\_\_\_\_

Others: \_\_\_\_\_

My collecting interests are: \_\_\_\_\_

### MEMBERSHIP LEVEL REQUESTED:

*Note: Checkout privileges begin at the Contributing Membership level, or \$25 per year.*

REGULAR MEMBER	[ ]	\$ 15.00 / YEAR	Payment Method:
CONTRIBUTING MEMBER	[ ]	\$ 25.00 / YEAR	Cash: _____
SUSTAINING MEMBER	[ ]	\$ 50.00 / YEAR	Check: _____
PATRON MEMBER	[ ]	\$ 100.00 / YEAR	# _____
SELECT MEMBER	[ ]	\$ 250.00 / YEAR	
BENEFACTOR MEMBER	[ ]	\$ 500.00 / YEAR	

Signature: \_\_\_\_\_ Date: \_\_\_\_\_

Approved by: \_\_\_\_\_ Date: \_\_\_\_\_

The RMPL is an IRS 501(c)3 tax exempt organization.

...What's Happening at the RMPL...  
 "Come and Enjoy the Activities"

Monday 10:00 AM - 4:00 PM  
 Thursday 2:00 PM - 8:00 PM

Tuesday 10:00 AM - 4:00 PM  
 Friday 10:00 AM - 4:00 PM  
 Closed Sundays and Holidays

Wednesday 10:00 AM - 4:00 PM  
 Saturday 10:00 AM - 4:00 PM

**NOVEMBER 2007**

- November 3 - Meeting 10:00 AM  
 Scandinavian Collectors Club
- November 3 - Meeting 2:00 PM  
 TOPIC - Topical Collectors in Colorado
- November 7 - Meeting - Aurora Stamp Club  
 6:30 PM Trading; 7:30 PM Meeting & Program
- November 10 - 9:00 AM  
**Second Saturday at the RMPL**  
 Program by Steve Nadler  
 "Afghanistan in the Crosshairs"
- November 10 - Meeting - 10:00 AM  
 Mexico/Latin America Study Group
- November 10 - Meeting - 2:00 PM  
 Universal Ship Cancellation Society  
 U.S.S. Colorado Chapter
- November 12 - Veteran's Day Observance - Closed**
- November 14 - Meeting - 7:00 PM  
 Denver Germany Stamp Club
- November 17 - Meeting - 9:30 AM - Noon  
 Metro Denver Young Stamp Collectors Club
- November 18 - Meeting - 2:00 PM  
 Machin Study Group (RMPL open Sunday for this meeting only.)
- November 19 - Meeting 6:30 PM - 9:00 PM  
 Russian Stamp Club
- November 22 - Thanksgiving Day - Closed**
- November 24 - Workshop - 10:00 AM  
 RMSS/RMPL Exhibiting Workshop  
 (Please call for reservations.)
- November 27 - Meeting - 7:30 PM  
 Rocky Mountain Stamp Show Committee
- November 28 - Meeting - 7:30 PM  
 Israel Stamp Club

**DECEMBER 2007**

**December Changes**

The Aurora, Denver Germany and TOPIC stamp clubs will hold holiday parties away from the library.

- December 1 - Meeting 10:00 AM  
 Scandinavian Collectors Club
- December 8 - 9:00 AM  
**Second Saturday at the RMPL**  
 Program by Marc Silberman  
 "State Revenue Stamps"
- December 8 - Meeting - 10:00 AM  
 Mexico/Latin America Study Group
- December 8 - Meeting - 11:30 AM  
 Rocky Mountain Aerophilatelists
- December 8 - Meeting - 2:00 PM  
 Universal Ship Cancellation Society  
 U.S.S. Colorado Chapter
- December 15 - Meeting - 9:30 AM - Noon  
 Metro Denver Young Stamp Collectors Club
- December 16 - Meeting - 2:00 PM  
 Machin Study Group (RMPL open Sunday for this meeting only.)
- December 17 - Meeting 6:30 PM - 9:00 PM  
 Russian Stamp Club
- December 22 - Exhibit Workshop - 10:00 AM  
 (Please call for reservations.)
- December 25 - Christmas Day - Closed**
- December 26 - Meeting - 7:30 PM  
 Israel Stamp Club

...Show Schedule...

**December 1:** Lakewood Stamp Exchange Stamp Bourse  
 10:00 AM - 4:30 PM Saturday  
 Clements Community Center - 1580 Yarrow, Lakewood  
 Contact: Pat McNally - (303) 433-0642



**January 5 & 6:** 16th Denver Postcard Show, "Postcard and Paper Odyssey 2008"  
 Jefferson County Fairgrounds Exhibit Hall, W. 6th Ave. at Indiana  
 Noon - 8:00 PM Friday; 9:00 AM - 5:00 PM Saturday

*Scribblings* is published bimonthly by the Rocky Mountain Philatelic Library, 2038 S Pontiac Way, Denver, CO 80224. The Rocky Mountain Philatelic Library is a chartered Colorado nonprofit corporation. Membership subscriptions over that for the regular membership, and donations of appropriate philatelic materials, are deductible for U.S. income tax purposes. The RMPL is an Internal Revenue designated 501 (c)3 charitable organization.

**RMPL BOARD OF DIRECTORS**

President and *Scribblings* Editor: Ron Mitchell - Operations Manager - Don Beuthel - Vice-President - Jim Kilbane  
 Corresponding Secretary: Robert Brown - Recording Secretary: Maury Pautz - Treasurer: Bob Blatherwick  
 At Large: Tim Bartshe - Sergio Lugo - Steve Schweighofer - Dalene Thomas - Emeritus: James L. Ozment and John H. Willard