

Scribblings

...from the Rocky Mountain Philatelic Library



Ellengail Beuthel, Librarian...

Vol. 15 - No. 2

2028 So. Pontiac Way, Denver, CO 80224

March-April 2007

www.RockyMountainPhilatelicLibrary.com

303.759.9921

Email - rmpl@qwest.net



A Matter of Opinion...

WHY I LOVE POSTAL HISTORY (AND YOU SHOULD TOO)

By Stephen B. Pacetti

At the outset, I admit my bias: I do not collect many individual postage stamps (particularly unused, never hinged, well centered, etc.) and have total disdain for the current trend toward so called "graded" stamps. In my view, it benefits only sellers by causing an absurd run up in prices. Unused stamps have no "soul", no character, because they never did anything, never went anyplace. They just sit there and look colorful. How can that be interesting?

On the other hand, a "cover" with one or more postage stamps on it, or stampless but moved through the mails anyway - now I'm interested! Very interested. And, I suggest, you should be also. This is the wonderful world of postal history.

In this Issue...

Donations Received	. 3
Carpet Cleaning 3
New members 4
Auction Catalog	
Collection 5
Stamp Camp USA 5
Additions to the	
Shelves 6
Membership	
Application11
Schedule	
of Events 12

Don't forget the
Rocky Mountain
Stamp Show May
18-20.

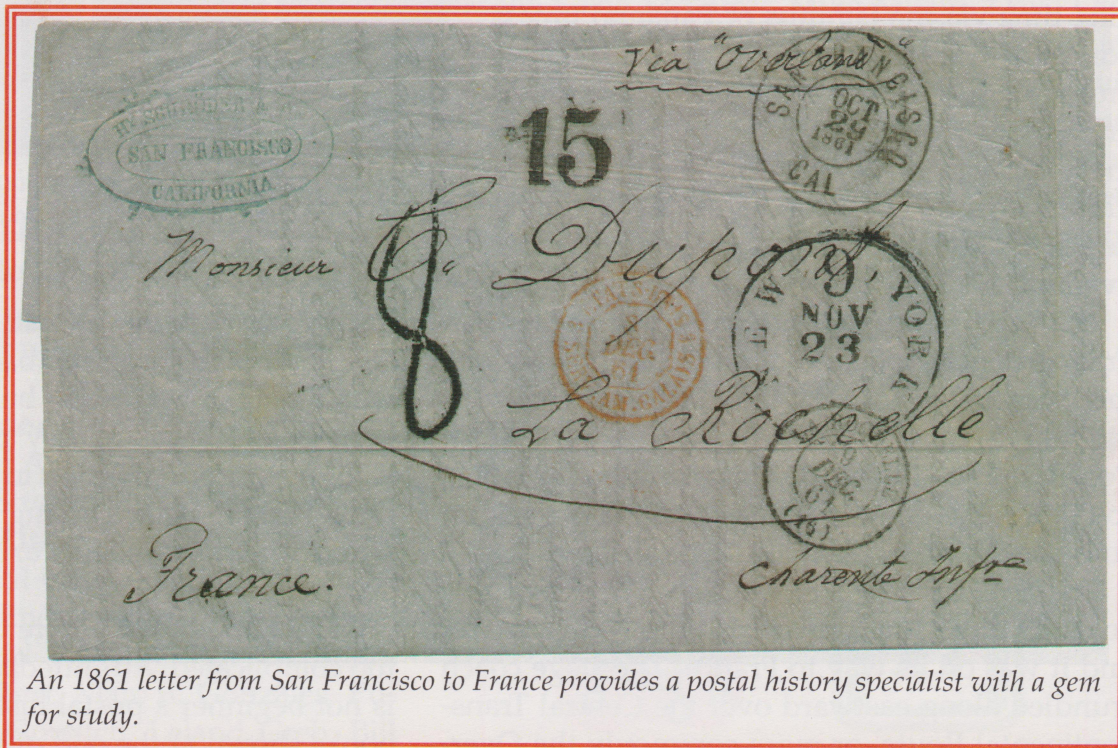
Volunteer now!
(See page 6.)

Second Saturday
Programs
9:00 - 10:00 AM
at the RMPL...

March 10 - "Jack Willard's
Stamp Show & Club
Archives"

April 14 - "Maps on
Stamps"
Carl Barna

About the Author...
Steve Pacetti specializes
in U.S. Classics.



An 1861 letter from San Francisco to France provides a postal history specialist with a gem for study.

Postal history may be defined as the study of postal rates and fees, routes, and markings. It answers such questions as, why is there a 10¢ postage stamp on this envelope? How did it travel from Denver to Philadelphia? What does that hand written marking "Reg. 502" mean? Why is there a postal marking on the back of the envelope? Take the cover shown here, a folded letter sheet (no envelope) addressed to La Rochelle, France.

Continued on page 2

RMPL

We begin by looking at the dates and see from the black, double circle town cancel (circular date stamp) at upper right that this cover began its journey in San Francisco on October 29, 1861. On the inside, the letter, written in French in a fine, neat hand, is dated the same day. We also see a blue, double oval hand stamp in the upper left corner. That's not a postal marking, but rather the sender's business marking, Henry Schroder & Co. of San Francisco.

At the top, the sender wrote "Via 'Overland'" and there's a bold black "15"

stamped on the cover. What's with that? Well, before July 1, 1861, mail traveling from the West coast to the East coast was sent by ship (which sailed only three times monthly and took a long time via the Isthmus of Panama) unless you specifically requested it be sent by land. From July 1, 1861, it was the other way around unless you requested travel by sea. So, here the notation was not needed, but either Henry didn't know that or being a good businessman he wanted to make sure because he knew that overland mail left every day.

The "15" hand stamp was struck in the San Francisco post office to denote that the postage rate was 15¢. That was the single weight letter rate for ½ ounce, pursuant to the U.S.-French Postal Convention of 1857 for travel from the U.S. to France. We know the cover was not prepaid in coin because there is no "PAID" marking.

The San Francisco post office then put this cover in a mail sack, loaded it on a stage coach, and it was on its way to France. The stage coach trundled along eastward over the Central Transcontinental Route, or more commonly the Overland Route, through such places as Sacramento, Salt Lake City, Ft. Laramie, Omaha, St. Joseph, to St. Louis. From there, it boarded a train through Chicago to New York City--a total 25 day trip.

In NYC, the post office's specialized foreign

OK. I know what you're thinking. This is way too complicated.

exchange office affixed the large black, single circle NEW/9/YORK/NOV 23 marking at middle right. Specifically struck in black to indicate an unpaid letter, the large "9" means the U.S. credits 9¢ to France in accordance with the mail convention (treaty) for transit to France by American contract service via Great Britain. The exchange office put the letter in another pouch along with others ("closed mail") and sent it on its way that day, November 23, 1861, on board the Inman Line's Edinburgh. The ship arrived in Liverpool on December 7, and the British foreign mail service sent the pouch across the English Channel to Calais, France.

At Calais, the French post office took over and applied the small red orange, single outer circle/octagon center hand stamp, 3 ETAT-UNIS 3/8 DEC 61/SERV. AM. CALAIS, to show that the letter arrived on December 8 and was from the U.S. by American service via England. The large, black "8" hand stamp to the left is a French rating postmark indicating 8 decimes postage due (15¢US).



Four backstamps on the cover show how, when, and where the letter was handled once it arrived in France.

There are four more small circular French "transit" hand stamps on the back of the cover that I won't bother you with, but they are important nonetheless because they tell us that the letter went by train from Calais to Paris to Poitiers to (finally!) La Rochelle arriving on December 9, 1861, where the addressee had to cough up 8 decimes to get his letter.

OK, I know what you're thinking. This is way too complicated. Admittedly, analyzing this cover is not beginner's postal history. I used the three books shown at the end of this article. My point has only been to show you how interesting, challenging, and very rewarding postal history can be. And, by the way, this was not a particularly

Continued on page 3

Page 2

expensive cover. I paid \$115 at an auction last November. You can find many wonderful covers on eBay, for example, for much less. Postal history need not be a "rich person's" hobby. I know you will love it!

Postscript: Any idea why Mr. Schroder, presumably being a shrewd businessman, would "stiff" his French associate or customer with paying the postage? Well, I do not know the answer for sure. Unpaid and part paid foreign mail is common during this time period. But my guess is that the post office, on October 29, 1861, did not have a 10¢ and 5¢ stamp to sell Schroder.

The old 1851-57 Issue stamps were no longer valid for postage. The distribution of the new 1861 Series postage stamps began in mid August 1861, but the West coast was among the last areas to receive supplies of the new stamps. The San Francisco postmaster placed a notice in the news-

paper announcing the new stamps in mid October. Perhaps they had sold out of the less used 10¢ and 5¢ stamps, or had not yet received a supply. Sometimes the government's best laid plans do not work out precisely as hoped.

References:

Evans, Don L., *The United States 1¢ Franklin 1861-1867*.

Hubbard, Walter & Winter, Richard F., *North Atlantic Mail Sailings 1840-1875*.

Winter, Richard F., *Understanding Transatlantic Mail, Vol. I*.

All are available at the library.

Note: An article giving another view of a popular way to collect stamps as the "best" way will appear in the next Scribblings.

News from the RMPL ...

DONATIONS RECEIVED

Donations of note during December and January include \$600 from the United Postal Stationery Society, \$500 from the national organization of the Scandinavian Collector's Club and several memorials to RMPL member John Nelson of Cheyenne who passed away on December 26.

We appreciate all donations and never take any of them for granted

Others who contributed cash or philatelic materials are:

Lt. Col. Robert Anderson, Roland Austin, Herman Axelrod, Richard Axtell, Phil R. Beutel, Bob Brown, Casey Jones Study Unit of the American Topical Association, Attilio B. Catanzano, Roger Cichorz, Estate of Cecil Cifka, Dr. Suresh Damle, Don Dhonau, John R. Endsley, Jr., Gordon Erskine, Catherine Fechner, Erl Fossum, Jim Fredlund, Gary Gibson, Ian Gilbert, Marc E. Gonzales, Putin Goodyear, Sonny Gorsuch, Leland Greb, Bill Gunderson, Fred Huskins, Alex Ioannides, Chuck James, and J. L. Johnson, Jr.

Also, Brian Kelly, David Kent, Charles Klein, Joe Lambert, Jeb Love, Donald Lovelace, Stan Luft, Glenn Mallory, Jason H. Manchester, Mike

Maselli, Gene McGurer, Mike Milam, Dave Owens, Steven Peckar, William Plachte, Bill Rapp, Jim Reichman, Robley Rhine, Roger Rydberg, Travis Searls, Jim Sherwin, Colin W. Spong, Bill Stolfus, Emily Stulac, Don Tyndall, United States Postal Service, Mark Vainer, Jack R. VanEns, Patrick Vertovec, Bart Windrum, Wineburgh Philatelic Library, Gene Wollenberg, and Nancy Zellens.

CARPET CLEANING TIME

The library will be closed on Wednesday, March 21st so the carpet may be cleaned.

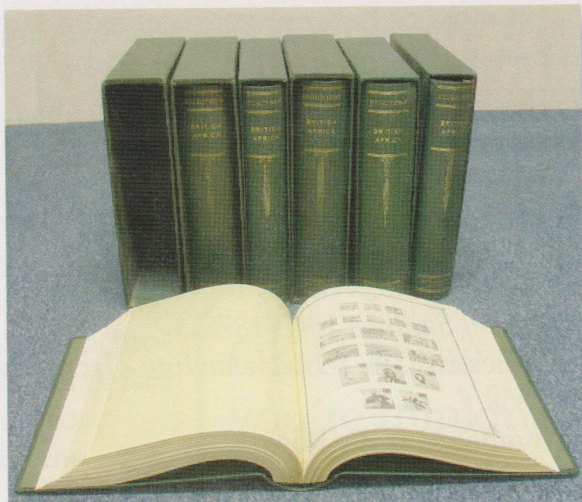
RMPL CLOSED (CARPET CLEANING)



WEDNESDAY MARCH 21

If you are one of our many regular patrons or volunteers on Wednesdays, you will want to mark the date on your calendar.

FOR SALE



British Africa Scott Speciality Series
Pages, Binders and Dust Cases
(no stamps)
Approximate retail value, \$600
Price, \$150

Coming to the Rocky Mountain Stamp Show...



by Don Dhonau

Stamp Camp USA is a popular national award winning program and for the first time at the RMSS, it will be available to youngsters 8 to 14 years of age, to Scouts, and to grownups who would like to learn how to teach young people how much fun stamp collecting is.

It's time to stop talking about involving kids in stamps and start to actually do it. The opportunity will be here May 18-20 at the RMSS. For more information, contact Don Dhonau at (303) 322-6039.

Scribblings...March - April 2007

SECOND SATURDAY PROGRAMS

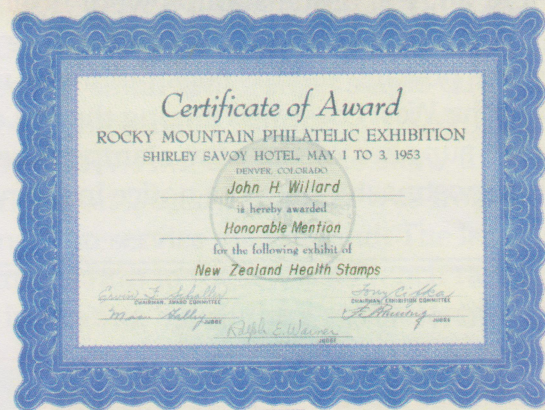
The popular 11-year-old tradition of a program on the second Saturday of each month from 9:00 to 10:00 AM continues. Donuts and coffee are complimentary and all are welcome.

MARCH 10

Jack Willard's

Stamp Show and Club Archives

Jack Willard's Denver collecting history goes back to the 1930s, and it looks like he never threw anything away! The trip back into our philatelic past is sure to be fun.



One of Jack Willard's first awards for exhibiting. He showed New Zealand Health stamps at ROMPEX in 1953.

APRIL 14

Maps on Stamps

by Carl Barna

Where in the world is? Chances are good the answer is on a map on a postage stamp.



Nations have issued more than 24,000 stamps relating to maps or cartography.

AUCTION CATALOG COLLECTION

by Steve Pacetti, Section Curator

Due to the generosity of library members like you, RMPL is most fortunate to have an excellent and varied collection of auction catalogs from many of the leading firms around the world. Unfortunately, the library has limited shelf space and cannot keep all of the *thousands* of catalogs we have received. Also, we must allow some shelf space for growth as the auction firms issue new catalogs.

The reason for keeping auction catalogs is basically no different than that for any other material in the library. Our goal is to aid in philatelic research and learning. Importantly, auction catalogs provide a picture of individual stamps, covers, and other items to assist you in the identification of your material, or to explore new countries or areas to collect.

Going over a catalog's offerings for say, France, and looking at the prices realized in recent sales will give you a fair idea of how much this potential collecting area will cost you!

Since about 1995 and the advent of digital imaging techniques, major auction firms now print their catalogs in full color, often with large detailed images. Also, the scholarly information in many a catalog's introductory pages and lot descriptions provide a valuable resource to philatelists.

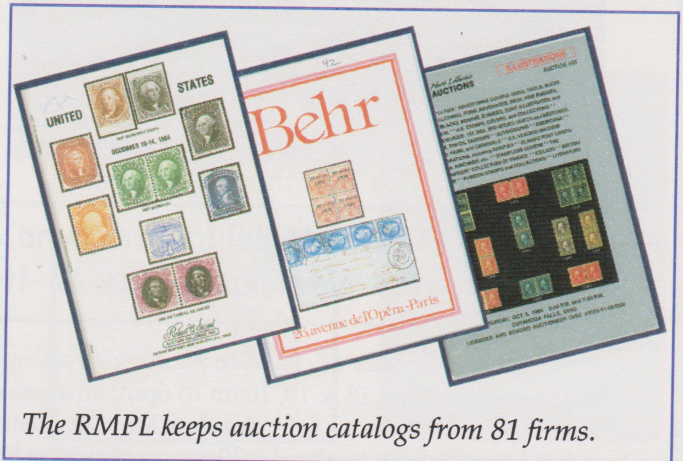
After a careful review of our catalog holdings and a complete reorganization of the available shelf space, we have narrowed down the selection the library will keep to the 81 firms on the enclosed catalog list. Additional copies of the list are available at the front desk in the library.

In deciding which catalogs to keep, the following general guidelines are in place:

1. **Only public auction catalogs will be kept for which prices realized are available or can be obtained.** Mail bid (this includes Nutmeg) and net price catalogs will *not* be saved, except those very few which offer one-of-a-kind, name collections, or unusual specialized collections.
2. **In most cases we should already**

have a reasonable run of the auction firm's catalogs.

3. **The RMPL will retain a collection of catalogs that contain a selection of quality worldwide offerings.** If there is a bias, however, it is toward the United States since that is where we live and it is a popular collecting area.



The RMPL keeps auction catalogs from 81 firms.

The best auctions are routinely cataloged. A computer search will lead you to them, shelved in the stacks with books and monographs.

For those of you who receive auction catalogs at home and kindly bring them to the library we thank you for your support. Please, however, look over the list of our holdings and bring only those listed.

If you have any questions or need assistance with the catalogs, you may leave a message at the library for Steve Pacetti, and he will get back to you.

NEW MEMBERS

We welcome the following collectors who joined the library in recent months:

Richard D. Stein, Aurora, CO
Harold V. Eason, Broomfield, CO
Jeffrey N. Halvorson, Denver, CO
John R. Endsley, Jr., TomBall, TX
Rick Wall, Highlands Ranch, CO
Joy Wall, Highlands Ranch, CO
Jim Roth, Colorado Springs, CO
Jie Lin, Aurora, CO
John Pavlis, Thornton, CO

**Volunteers kept ROMPEX going in the 1970s.
Will you be in the picture in 2007?**



ROMPEX in the 1970s



Rocky Mountain Stamp Show, 2007

RMSS 2007 needs volunteers who can work at least a 2 hour shift from Thursday afternoon, May 17 through Sunday afternoon, May 20.

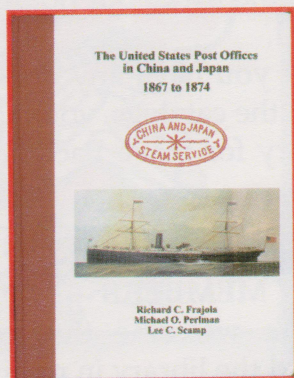
Thursday, May 17, 12:30 to about 6:30; set up frames (hard work), mount exhibits (easy work).
Friday, Saturday May 18 & 19, 10am to 6pm; admissions and cachet sales, 2 hr shifts (easy work; sitting, talking)
Sunday, May 20, 10am to 2pm; same as Fri & Sat
Sunday, May 20, 3pm to about 6:30pm; unmount exhibits (easy work), take down and pack frames (hard work)

If you want to help, call John Bloor (720)-529-5942; email aerohil59@yahoo.com or leave a message at the library.

**ADDITIONS TO THE SHELVES
UNITED STATES**



1869s Auction



USPO in China & Japan

says and Proofs, a Robert Siegel auction, 2005.
The Mekeel's Reference Manual, published by Mekeel's and Stamps Magazine, 1992-[1998?].
The United States Post Offices in China and Japan, 1867 to 1874 by Richard Frajola, Michael Perlman, and Lee Scamp, 2006.

20th Century

The Commemorative Cancellation Catalog, 1989 by Paul Brenner.
Postmarks on Postcards: An Illustrated Guide to Early Twentieth Century United States Postmarks by Richard Helbock, 2002.

Airmail

Catalog of the Charles A. Lindbergh Collection of Cardinal Spellman Philatelic Museum, compiled by Sister M. Fidelma and Walter Curley, 1968.
Domestic Air Mail Routes of the United States of America: Catalogue of Revised Service Beginning May 8, 1937, Albert Brown, Perham Nahl, Ralph Moffett, editors, 1937.

Military

Combat Infantry Mail: A Catalog of Postmarks Used by World War II U.S. Infantry Division APOs by Richard W. Helbock, 1991.

Classics

The Bank Note Issues of United States Stamps, 1870-1893, compiled by Lester Brookman, 1981.
The Edgar Kuphal Collection of Carriers, Locals and Independent Mails, a Robert Siegel auction, 2006.
The Elliott H. Coulter Collection of the United States 1869 Pictorial Issue Including the Renowned Exhibit of Usages Around the World, a Robert Siegel auction, 2006.
The Foreign Mail Cancellations of New York City, 1870-1878 by William R. Weiss, 1990.
The Lake Shore Collection: Part Two, Sale 890: United States Es-

Scribblings...March - April 2007

Continued on page 7
Page 6

Confederate Patriotic Covers and Their Usages by Benjamin Wishnietsky, 1991.

The George Walcott Collection of Used Civil War Patriotic Covers, compiled by Robert Laurence, 1934.

Locations and Assignments: USN/USMC Mobile Land Forces and Their Post Office Facilities, compiled by Robert Murphy, 1977.

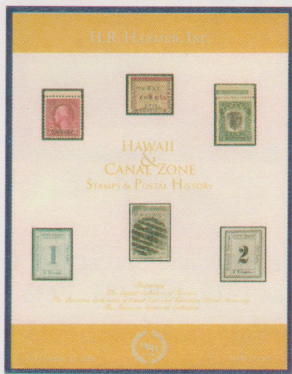
Military Mail and Civil War Patriotic Covers Used in Missouri by Robert Schultz and Ward Parker, 1995.

A Philatelic Tour of the American Civil War (Also Known as The War Between the States) by Larry Dodson, 2006.

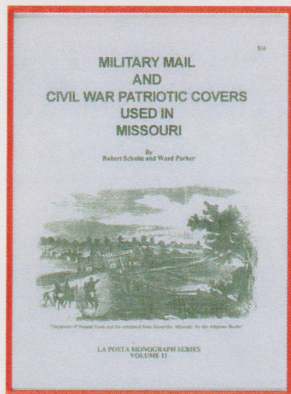
United States Patriotic Envelopes of World War II by Lawrence Sherman, 2006.

U.S. Postal Machines of the Army Post Offices, World War II, Vols. 1 & 2, by Bart Billings, 2006.

A Valuation Guide for A. E. F. covers, 1917-1923 by Theo. Van Dam and Richard Sackett, 1983.



Hawaii & Canal Zone Auction



...Used in Missouri

Possessions

Hawaii & Canal Zone Stamps and Postal History, H. R. Harmer auction, 2006.

Revenues

Field Guide to Revenue Stamped Paper: Being a Priced Catalog of Civil War and Spanish American War Checks, Drafts, Receipts, Stocks, Bonds and Other Documents Bearing Imprinted Revenue Stamps, Part 1: The Western States, compiled by B. J. Castenholz, 1989.

Field Guide to Revenue Stamped Paper Part 2: The Southern States by William A. Litle and Michael W. Sherman, 1989.

Field Guide to Revenue Stamped Paper Part 3: The Central States, compiled by B. J. Castenholz, 1989.

Field Guide to Revenue Stamped Paper Part 4: The Eastern Central States, compiled by B. J. Castenholz, 1989.

Field Guide to Revenue Stamped Paper Part 5: The Eastern States, compiled by B. J. Castenholz, 1990.

Field Guide to Revenue Stamped Paper Part 6: New York States, compiled by B. J. Castenholz, 1991.

Field Guide to Revenue Stamped Paper Part 7: Stocks, Bonds, and Railroad Tickets, compiled by B. J. Castenholz, 1991.

The Henry Tolman II Collection of United States Revenue Stamps, Parts 1, 2 & 3, Robert Siegel auctions, 2006.

The Real Estate State Revenue Stamps Catalog by Peter Martin, 2006.

Scribblings...March - April 2007

First Day Covers

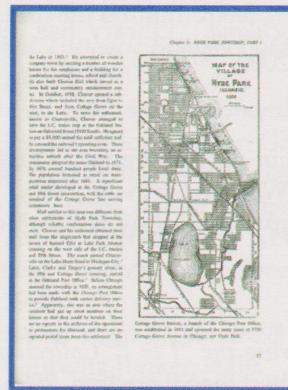
Extraordinary First Day Covers, Nutmeg Stamp Sales Auction, 2006.

Mellone's Directory of Cachet Makers & Servicers, 1980.

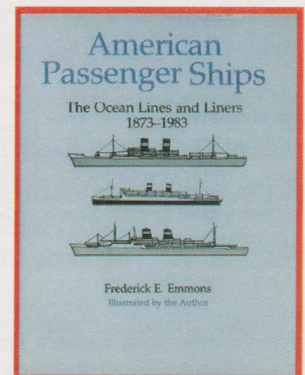
Price Catalog

The Official Blackbook Price Guide to United States Postage Stamps by Marc Hudgeons and Tom Hudgeons. Library has 1988, 1991, 1994, 1995, 1997, 2002, 2003.

Miscellaneous



Chicago's Communities page



Passenger Ships

The American Mail: Enlarger of the Common Life by Wayne Fuller, 1972.

American Passenger Ships: The Ocean Lines and Liners, 1873-1983 by Frederick E. Emmons, 1985.

America's Story as Told in Postage Stamps by Edward Monington Allen, 1930.

Chicago's Crabgrass Communities: The History of the Independent Suburbs and Their Post Offices that Became Part of Chicago by Harvey M. Karlen, 1992.

The Great Mail: A Postal History of New Orleans by Leonard V. Huber and Clarence A. Wagner, 1949.

Scott Specialized Color Guides for United States Stamps, 2005.

MEXICO

A Catalogue of the Stamps of Mexico, 1856-1910 by Nicholas Follansbee, 2006.

The Cancellations of Mexico: 1856-1874 by Joseph Schatzkes, 1964.

A Comprehensive and Specialized Catalogue of the Exporta Issues of Mexico by John R. Endsley, Jr., 2007.

Handbook of Mexican Philately: The 1856 Issue, Parts 1, 2 & 3 by Roberto Liera and Isaac Backal, [1970s?].

Mexico Postage Meter Stamp Catalog by Douglas Kelsey, 1994.

Porte de Mar by Karl H. Schimmer, 1987.

The Postmarks of Mexico 1874-1900 (Los Matasellos de Mexico) by Karl H. Schimmer, 1977.

The "Sunburst" Registry Seals of Mexico by Nicholas Follansbee, with the collaboration of Richard C. Sailant and based on initial studies by Charles W. Brock, 1993.

Continued on page 8

Page 7

CARIBBEAN

Encyclopedia of Jamaican Philately Including Postal history and Postcards, edited by Derek Sutcliffe and Steve Jarvis, 1997.

The Stamps of Barbados by Edmund A. Bayley, 1989.

EUROPE

Germany

DNK Deutschland Briefmarken-Katalog, published by Light-house. With few gaps, the library has 1955-2000.

Michel Deutschland-Spezial-Katalog. With few gaps, the library has 1964-2006.

Michel Ganzsachen-Katalog Deutschland. Library has 1972, 1975, 1979, 1985, 1989, 1999, 2000.

Great Britain

The Essential Guide to Great Britain Line Engraved 1d and 2d Stars, 1840-1864 by Kenneth William Statham, 1995.

One Penny Black: The Story of Stamp Collecting by Edwin Hoyt, 1965.

France

Foreign Stamps and Covers Featuring the "J & J" Collection of France and French Areas, a Robert Siegel auction, 2006.

Roosevelt, de Gaulle and the Posts: Franco-American War Relations Viewed Through Their Effects on the French Postal System, 1942-1944 by D. M. Giangreco, 1987.

Tables of French Postal Rates, 1849 to 2005 by Derek Richardson, 2006.

Scandinavia

The Denmark Catalog: Plates by J. Schmidt-Andersen, [no date].

The Frederik Collection of Iceland, Cherrystone Auction Galleries, 2006.

The Stanley Gibbons Stamp Catalogue: Part 11, Scandinavia, 1980.

Others

Bulgaria from the Ottoman Empire to the Kingdom: History, Stamps and Postal History, 1840-1908 by Roberto Sciaky, 2006.

The "Foxbridge" Collection of Eastern & Central Europe, Nutmeg Stamp Sales, 2006.

Hungary: 'Single' Stamps and 'Fewest Stamps Used' Frankings during the 1945-46 Hyper-Inflation by Robert B. Morgan, 1992.

The Milano Collection of Lombardy-Venetia, Cherrystone Auction Galleries, 2006.

Philex Osterreich Briefmarken-Katalog. Library has 1966, 1967/68, 1970/71, 1973/74, 1976/77.

The Postal History of Cyprus by Edward B. Proud, 1998.

The Postal History of Gibraltar, 1704-1971 by Edward B. Proud, 1998.

The Postal History of Malta by Edward B. Proud, 1999.

Stamp Catalog of Switzerland, 1991. Library holdings include

11 editions from 1953-1991.

The Zbigniew S. Mikulski Collection of Russia, 1857-58, Cherrystone Auction Galleries, 2006.

AFRICA

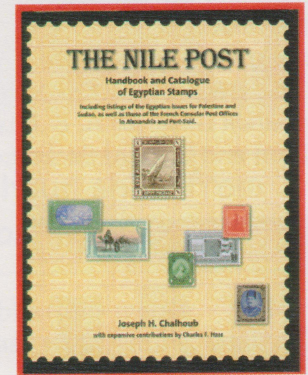
Commonwealth Stamp Catalogue: Central Africa, published by Stanley Gibbons, 2005.

The Nile Post: Handbook and Catalogue of Egyptian Stamps by Joseph Chalhoub, 2003.

The Postal History of Sudan by Edward B. Proud, 2006.



Bulgaria



Nile Post

MIDEAST

Bale Zodiac Stamps of the Palestine Mandate: Specialized Catalogue, [1995?]. Library also has 1978, 1980/81, 1992.

Catalogue of the Postage Stamps of Israel by Yehuda Hugo Kolar, 1971-1973.

Forerunners to the Forerunners: A Pre-Philatelic Postal History of the Holy Land by Joseph Aron, 1988.

Judaica Guide for Stamp Collectors by A. Lindenbau & Dr. S. Dagoni, 1963.

Gershon's Catalogue of Israel Stamps, 1958 and 1960.

Handbook of Holy Land Philately: The Foreign Post Offices in Palestine, 1840-1918 by Anton Steichele, 1990.

Specialized Philatelic Catalogue, Israel [no date]. Library also has 1958, 1978.

Stanley Gibbons Stamp Catalogue: Part 19, Middle East, 1980.

ASIA AND THE PACIFIC

China: The Magnificent Collection Formed by the late Paul Hock, a Robson Lowe, Zurich, auction, 1983.

The Chinese Large Dragons by Joseph M. Sousa and Michael Rogers, [no date].

A Concise Catalogue of Postal Cancellations of China (1872-1949), compiled by Paul Ke-Shing Chang, 1996.

Giant Pandas of China, published by Fleetwood, 1985.

A Historical Survey of Postage Stamps, Postmarks & Postage Rates of Taiwan (1945-1949) by Paul Ke-Shing Chang, 1986. In Chinese and English.

History of Postal Cancellations of China, Parts 1 through 10 by Paul Ke-Shing Chang, 1989-1995.

Hong Kong Registration Labels by Ming W. Tsang, 1993.

Continued on page 9

- The I. G. in Peking: Letters of Robert Hart, Chinese Maritime Customs, 1868-1907 Volumes 1 and 2*, edited by John King Fairbank, Katherine Frost Bruner, et al., 1975.
- I. P. A. [International Philatelic Agency] Stamp Catalogue of Malaysia-Singapore-Brunei*, 1973.
- The Paquebot Marks of Asia and of Japan's Sea Posts* by Edwin Drechsel, 1984.
- The Pitcairn Island: Nineteenth Century Mail*, compiled by Stephen Pendleton, [2006?].
- Postal Rate History of China and Hong Kong: The Pre-adhesive Period to the Beginning of Packet Service from Hong Kong, 1800-1845* by Lee C. Scamp, 1986.
- A Provisional Listing of North Korean Postal Cards, 1947-1950* by Joe Cartafalsa and Michael Rogers, 1984.
- Siberia: Postmarks and Postal History of the Russian Empire Period* by P. E. Robinson, 1986.
- The Tourist Sheets and Booklets of Japan* by Ron Casey, 2004.

- Fifty Years of British Air Mails: 1911-1960* compiled by N.C. Baldwin, [no date].
- From Lilienthal to Luft Hansa* by N. Smart, 1988.

CINDERELLAS

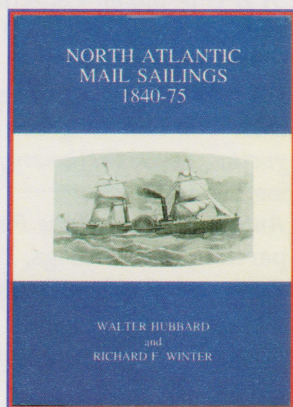
- Handbook of the Issues of the Jewish National Fund*, compiled by Sidney Rochlin, 2003.

TOPICALS

- Catalogue de la Collection Concorde* published by Espace Lolini, 8th edition, 2004.
- Domfil Thematic Stamps Catalogue: Fauna, Prehistorics & Fossils*, 1972.
- The Fall 1993 Space Memorabilia Auction and Reference Catalog*, Superior Auction Galleries.
- Great Jews in Stamps* by Arieh Lindenbaum, 1970.
- The Prehistoric Age on Stamps: Dinosaurs, Prehistoric Animals, Fossils, Early Man* by Al Collins, [2000?].
- Primary Recovery Ship Cover Handbook* by Ray E. Cartier, 1998.
- Registered Mail of the 1928 Amsterdam Olympic Games* by Laurentz Jonker, 2006.
- Space Covers: Dictionary & Identifier* by Bruce Cranford, 2006.
- Study of 'Suspect' Space Covers* by Reuben A. Ramkissoon and Lester Winick, 1975.
- Unstamped Russian Envelopes with Space Symbolics* by James G. Reichman, 2006.



Intercepted in Bermuda page



Transatlantic Mail Sailings

TRANSOCEANIC MAIL

- Intercepted in Bermuda: The Censorship of Transatlantic Mail During the Second World War* by Peter A. Flynn, 2006.
- North Atlantic Mail Sailings, 1840-75* by Walter Hubbard and Richard Winter, 1988.

POLAR

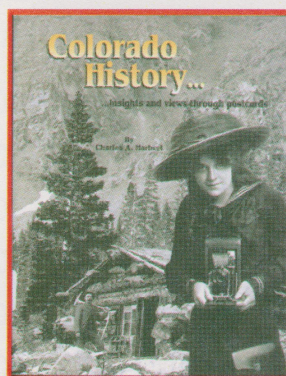
- Soviet Antarctic Expeditions, 1955-1959: International Geophysical Year* by A.V. Nudelman, translated by Dr. Ross Marshall, 2003. This is a CD.
- National Antarctic Offices* [no author] [no date].

AIRMAIL (Worldwide)

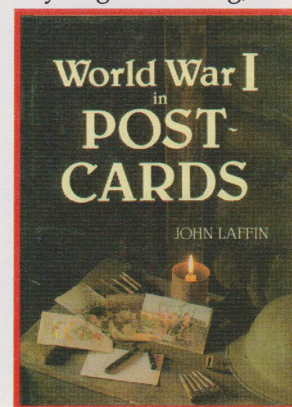
- Airmail Stamps of China* by Richard E. Gray, 1977.
- The Air Post Stamps of Colombia*, edited by F. W. Kessler, 1935.
- Catalogue Historique et Descriptif des Timbres de la Poste Aérienne (In French and English)* by Theodore Champion, 1930.
- Command the Horizon: A Pictorial History of Aviation* by Page Shamburger and Joe Christy, 1968.
- The External Air Mails of New Zealand* by N.C. Baldwin, [no date].

FORGERIES AND COUNTERFEITS

- A Simple Guide to Detecting and Understanding Regummed, Reperforated, Altered, and Faked Stamps Including an Insider's Account of the "Organized Crime" of Philately* by the Reverend Doctor Philip de Rochambeau, 1997.
- Spanish-Philippine Stamp Forgeries* by Nigel Gooding, 2006.



Colorado History in Postcards

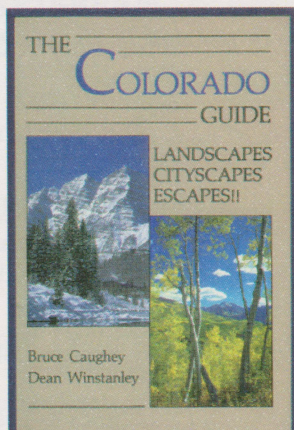


WWI in Postcards

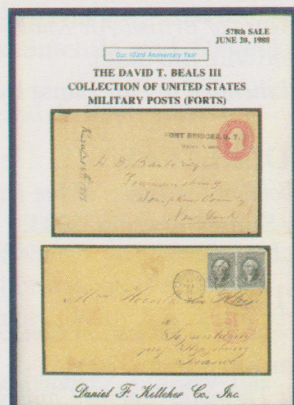
POSTCARDS

- Colorado History: Insights and Views through Postcards* by Charles A. Harbert, 2006.
- World War I in Postcards* by John Laffin, 1988.

Continued on page 10



Colorado Guide



U.S. Military Forts Auction

COLORADO AND THE WEST

Colorado Guide: Landscapes, Cityscapes, Escapes by Bruce Caughey and Dean Winstanley, 1989.

Colorado's First Portrait: Scenes by Early Artists by Clifford P. Westermeier, 1970.

Condensed Profile of the D. & R. G. W. R. R. System, 1955.

The David T. Beals III Collection of United States Military Posts (Forts), a Daniel F. Kelleher Co. auction, 1988.

Encyclopedia of Native American Tribes by Carl Waldman, 2006.

Journal of a Mountain Man by James Clyman, 1984.

The Mines of Colorado by Ovando J. Hollister, 1974.

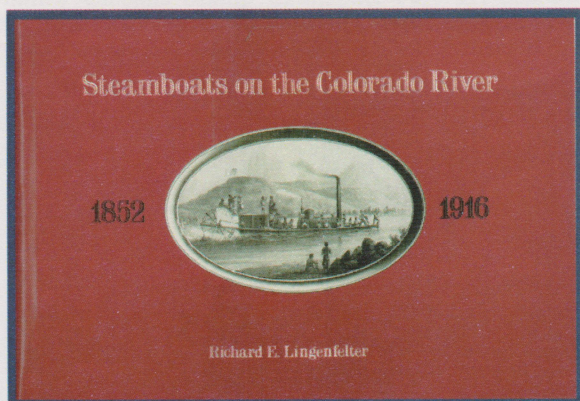
Postmarked Idaho: A List of Idaho Post Offices compiled by Guy Reed Ramsey, 1975.

Narrow Gauge to Silverton by John B. Hungerford, 1959.

People of Chaco: A Canyon and Its Culture by Kendrick Frazier, 1986.

Steamboats on the Colorado River, 1852-1916 by Richard Lingenfelter, 1978.

Touching Tomorrow: The Emily Griffith Story by Debra



Steamboats on the Colorado River

Faulkner, 2005.

"Wild Bill" Hickman and the Mormon Frontier by Hope A. Hilton, 1988.

MISCELLANEOUS

The Philatelic Collection formed by Sir Gawaine Baillie, auctions by Sotheby's:

Vol. VII, *British North America*, May, 2006.

Vol. VIII, *Rhodesia*, September, 2006.

Vol. IX, *Great Britain & British Empire, Part One*, November, 2006.

Vol. X, *Great Britain & British Empire, Part Two & Separati Forgeries of the World*, January, 2007.

Note: These scholarly Sotheby's auction catalogs present a great deal of specialized information. Lots are illustrated in color and in full size. The library has the complete set of 10 auctions.

The A B C of Stamp Collecting: A Guide to the Instructive and Entertaining Study of the World's Postage Stamps by Fred J. Melville, [1900?].

The American Bank Note Company: United States and Worldwide: The Last Original Holding of Proofs, Essays, Vignettes, Postal Stationery, Cherrystone Auction Galleries, 2006.

An Anthology of Machine Postal Markings, Volume 1, prepared by Bart Billings, 1992.

The Beginner's Guide to Stamp Collecting by Neill Granger, 1991.

How to Collect Stamps, published by H. E. Harris & Co., 2000.

The Complete Guide to Stamp Collecting by Prescott Holden Thorp. Library has editions of 1953, 1954, 1961, 1967, 1973, 1975.

Merriam-Webster's Collegiate Dictionary, 11th Ed., 2006.

Oxford Large Print Dictionary, Thesaurus, & Wordpower Guide edited by Sara Hawker, 2002.

Scott Pocket Stamp Catalogue: United States, Canada, United Nations. Library has 1979, 1980, 1981, 1995, 1996, and 2002, 2006

Preserving Stamps and Covers by George Saqqal, [no date].

Printing Postage Stamps by Line Engraving by James H. Baxter, Quarterman Publications 1981 reprint from 1939.

Read Before Dealing: An Introductory Philatelic Trade Manual by George Hentzell, 1980.

Scott's Guidebook to Stamp Collecting by L. N. & M. Williams, 1963.

Scott's What Stamp is That?, 1970.

The Stamp Collector's Atlas by G. F. Rapkin, [no date].

The Stamp Collector's Handbook: A Valuable Storehouse of Philatelic Knowledge, for Pleasure or for Investment by Samuel Grossman, 1957.

Stamp Grading Terms Explained [no author] [no date].

Rocky Mountain Philatelic Library

2038 South Pontiac Way, Denver, Colorado 80224

Phone: (303)759-9921

Email: rmpl@qwest.net

Internet: www.rockymountainphilateliclibrary.com

APPLICATION FOR MEMBERSHIP

++ Please Print All Information Clearly ++

Name: _____
Last First MI

Address: _____
Street Apt. No.

City: _____ State _____ Zip _____

Phone No.: (_____) _____

Email: _____

I am a member of the following national philatelic organizations:
(Please provide membership numbers if you know them.)

APS _____ USSS _____ ATA _____

Others: _____

My collecting interests are: _____

MEMBERSHIP LEVEL REQUESTED:

Note: Checkout privileges begin at the Contributing Membership level, or \$25 per year.

REGULAR MEMBER	[]	\$ 15.00 / YEAR	Payment Method:
CONTRIBUTING MEMBER	[]	\$ 25.00 / YEAR	Cash: _____
SUSTAINING MEMBER	[]	\$ 50.00 / YEAR	Check: _____
PATRON MEMBER	[]	\$ 100.00 / YEAR	# _____
SELECT MEMBER	[]	\$ 250.00 / YEAR	
BENEFACTOR MEMBER	[]	\$ 500.00 / YEAR	

Signature: _____ Date _____

Approved by: _____ Date: _____

The RMPL is an IRS 501(c)3 tax exempt organization.

...What's Happening at the RMPL...
 "Come and Enjoy the Activities"

Monday 10:00 AM - 4:00 PM
 Thursday 2:00 PM - 8:00 PM

Tuesday 10:00 AM - 4:00 PM
 Friday 10:00 AM - 4:00 PM
 Closed Sundays and Holidays

Wednesday 10:00 AM - 4:00 PM
 Saturday 10:00 AM - 4:00 PM

MARCH 2007

- March 3 - Meeting - 10:00 AM
 Scandinavian Collectors Club
- March 3 - Meeting - 2:00 PM
 TOPIC - Topical Collectors in Colorado
- March 7 - Meeting - Aurora Stamp Club
 6:30 PM trading; 7:30 PM meeting
- March 10 - 9:00 AM
Second Saturday at the RMPL
"Jack Willard's Stamp Show and Club Archives."
- March 10 - Meeting - 10:00 AM
 Mexico/Latin America Study Group
- March 10 - Meeting - 2:00 PM
 Universal Ship Cancellation Society
 U.S.S. Colorado Chapter
- March 14 - Meeting - 7:00 PM
 Denver Germany Stamp Club
- March 15 - Meeting - 7:00 PM
 Denver Postcard Club
- March 17 - Meeting - Noon
 Exploration and Discovery Study Group
- March 18 - Meeting - 2:00 PM
 Machin Study Group
- March 21 - Library CLOSED (carpet cleaning)**
- March 24 - Meeting - 9:30 AM - Noon
 Metro Denver Young Stamp Collectors Club
- March 24 - Exhibit Workshop - 10:00 AM
 (Please call for reservations.)
- March 24 - Meeting - 2:00 PM
 China Study Group
- March 27 - Meeting - 7:30 PM
 Rocky Mountain Stamp Show Committee

APRIL 2007

- April 4 - Meeting - Aurora Stamp Club
 6:30 PM trading; 7:30 PM meeting
- April 7 - Meeting - 10:00 AM
 Scandinavian Collectors Club
- April 7 - Meeting - 2:00 PM
 TOPIC - Topical Collectors in Colorado
- April 11 - Meeting - 7:00 PM
 Denver Germany Stamp Club
- April 14 - 9:00 AM
Second Saturday at the RMPL
 Program by Carl Barna, "Maps on Stamps."
- April 14 - Meeting - 10:00 AM
 Mexico/Latin America Study Group
- April 14 - Meeting - 2:00 PM
 Universal Ship Cancellation Society
 U.S.S. Colorado Chapter
- April 21 - Meeting - 9:30 AM - Noon
 Metro Denver Young Stamp Collectors Club
- April 28 - Exhibit Workshop - 10:00 AM
 (Please call for reservations.)
- April 28 - Meeting - 2:00 PM
 China Study Group
- April 24 - Meeting - 7:30 PM
 Rocky Mountain Stamp Show Committee

The Banana Belt Stamp Club presents

BANANAPEX 2007!

Saturday, April 14th
 Community Center on East Main St.
 Beautiful Buena Vista



...Show Schedule...

- March 3: Colorado Springs, 10:00 AM to 5:00 PM (Saturday) - 6 Dealers
 Candlewood Suites - 6450 N. Academy Blvd. - Contact John Canady at (303) 250-0181
- March 10: Lakewood Stamp Exchange, 10:00 AM to 5:00 PM (Saturday) - 6 Dealers
 Clements Community Center - 1580 Yarrow, Lakewood - Contact Pat McNally - (303) 433-0642
- March 24: Boulder, 10:00 AM - 5:00 PM (Saturday) - 8 Dealers
 Marriott Hotel - 26th & Canyon - Contact John Canady at (303) 250-0181
- March 24: Platte River Postcard & Paper Show - 9:00 AM 4:00 PM (Saturday)
 Kinghts of Columbus, 3800 S. Windermere, Englewood - Contact Bill & Carol Mobley, (303) 761-3755
- April 21: North 25 Stamp Bourse - 10:00 AM to 5:00 PM (Saturday) - 10 Dealers
 Best Western Coach House, Loveland I-25 Exit 257B - Contact Phil Kearney at (970) 484-4824
- April 28: Lakewood Stamp Exchange, 10:00 AM to 5:00 PM (Saturday) (Location, same as March 10)
- May 18, 19 & 20: Rocky Mountain Stamp Show 2007 (Friday, Saturday, Sunday) - 40+ Dealers
 Holiday Inn DIA - I-70 & Chambers Rd. Volunteers needed. Call John Bloor at (720) 529-5942

Scribblings is published bimonthly by the Rocky Mountain Philatelic Library, 2038 S Pontiac Way, Denver, CO 80224. The Rocky Mountain Philatelic Library is a chartered Colorado nonprofit corporation. Membership subscriptions over that for the regular membership, and donations of appropriate philatelic materials, are deductible for U.S. income tax purposes. The RMPL is an Internal Revenue designated 501 (c)(3) charitable organization.

RMPL BOARD OF DIRECTORS

President and *Scribblings* Editor: Ron Mitchell - Operations Manager - Don Beuthel - Vice-President - Jim Kilbane
 Corresponding Secretary: Robert Brown - Recording Secretary: Maury Pautz - Treasurer: Bob Blatherwick
 At Large: Time Bartshe - Sergio Lugo - Steve Schweighofer - Dalene Thomas - Emeritus: James L. Ozment and John H. Willard