

Scribblings

...from the Rocky Mountain Philatelic Library



Ellengail Beuthel, Librarian...

Vol. 14 - No. 5

2038 S. Pontiac Way, Denver, CO 80224

September-October 2006

www.RockyMountainPhilatelicLibrary.com

303.759.9921

E-mail - rmp@qwest.net



In this Issue...

Membership notes...p. 2

Postmark Collectors Club
Visit....p. 3

RMPL Expertizing...p. 4

Book Reviews.....p. 5-6

Bill's Garden...p. 6

T-Rex Update...p. 6

New Members...p. 6

Donations ..p. 7

10th Anniversary
Gala...p.7

Additions to the
Shelves.....p. 8-10

Membership App...p. 11

Schedule.....p. 12

Second Saturday at the RMPL...

September 9 - "Arago:
New Window into Rarities
of the World"
Dave Weisberg

October 14 - "Getting
Comfortable with
Machins"
Jeff Modesitt

About the Author...

Steve Pacetti has been
specializing in stamps of
the Hawaii Islands for 15
years. He also collects
U.S. Classics.

Neither rain nor sleet nor germs...

FUMIGATED MAIL

by Stephen B. Pacetti, RMPL Member

Between 1853 and early 1900, the Sandwich Islands (Hawaii) were struck with epidemics of smallpox, typhoid fever, cholera, and bubonic plague, brought there by people--and flea infested rats--traveling on ships. The public health policy and scientific methods of this time period typically fought the introduction and spread of these diseases with quarantine, disinfection and burning material thought to be contaminated with germs. It was thought, up until the early 20th century, that dry paper could transmit these germs (which is true in the case of smallpox). Mail bags were burned during the three epidemics between 1853 to 1868.



Figure 1. Hawaiian printed postal envelope 1¢ entire (Scott No. U1) postmarked in Honolulu on September 30, 1895 during the August 20 to October 23, 1895 cholera epidemic. Also franked with a 1¢ (No. 37), 5¢ (No. 32), 5¢ Provisional Government red overprint (No. 58), and 6¢ (No. 33), the 18¢ postage underpaid by 2¢ the 10¢ UPU letter rate to Bombay, India and 10¢ registration fee. Note the clipped lower left and upper right corners.

During the bubonic plague outbreak of December 12, 1899 to April 30, 1900, Honolulu officials decided to set fire to Chinatown. Wind driven sparks caused the fire to go out of control and 38 acres of homes were destroyed leaving some 4000 residents homeless.

Continued on page 2

RMPL



Figure 2. Printed envelope to Maui with a 2¢ stamp (No. 81) which paid the inter island letter rate. Postmarked on January 16, 1900 in Honolulu during the 1899-1900 bubonic plague epidemic. The clipped corners are very prominent.

While fire may work fine to eliminate fleas, it does a terrible job on the mail! For this more delicate task, sulfur dioxide fumes were used, beginning with the smallpox outbreak of October 1868 to February 1869. Beginning in 1889, formalin (a formaldehyde derivative), also was used as a disinfectant. Two or more corners of sealed envelopes containing mail were clipped off. Then, the envelopes were placed in drawers of specially designed cabinets and allowed to soak up the disinfectant fumes. Mail bound for the United States from Hawaii was refumigated at Angel Island in San Francisco Bay. Those envelopes usually show two to four small punch holes in the corners.

Though we now know this technique was

not really effective in eliminating germs, it has left postal history collectors with some very interesting covers.

For more information see:

Hawaii and It's People, A. Grove Day (Mutual Publishing, 1993 reprint).

The Honolulu Advertiser Collection: The Stamps and Postal History of Hawaii, Robert A. Siegel Auction Galleries, 1995.

Mail Disinfected in Hawaii, Randall E. Burt (Postal History Journal, No. 100, Feb 1995 & No. 101, June 1995).

For a broader, worldwide view, see: *Disinfected Mail* by K.F. Meyer, 1962.

them joined at the per year rate of \$25 or above, which entitles them to checkout privileges. This is very encouraging to the board and volunteers.

We have added a membership application to the next-to-last page of *Scribblings*. Make a copy, give it to a collecting friend and ask them to join. Tell them about *Scribblings*, the many clubs that meet in the library and the advantages you have found as a member.

New members are essential to the RMPL's continued good health!

News from the RMPL ...

OUR GROWING MEMBERSHIP

The RMPL continues to buck the trend in philatelic organizations as membership is growing at the slow but steady rate of several a month. As this is written, our rolls have 414 members. More than a dozen collectors joined as a result of a mailing to Colorado residents who belong to the American Philatelic Society but do not belong to the RMPL. All but three of

SECOND SATURDAY PROGRAMS

Our monthly programs are more popular than ever. Bring a friend who snickers when you mention you collect stamps. The presentations are always fun, entertaining and enlightening to those who are "stamp collecting challenged." Programs start at 9:00 AM and are over by 10:00 AM. Donuts and coffee are complimentary.

SEPTEMBER 9

The National Postal Museum's latest project, *Arago* will be explained live on the internet by Dave Weisberg.

Arago was introduced to great acclaim at Washington 2006 last May and most collectors are not yet aware of what a powerful tool it can be for them.



Arago allows you to magnify beauties like this \$1 Columbian so you may discover parts of designs you didn't know existed.

Dave's program is titled *Arago: New Window into the Rarities of the World.*

This is the first day of the Aurora Stamp Club's APEX at the Buckingham Square Shopping Center. There will

be plenty of time for you to take in the Second Saturday program and then head over for the stamp show, just as the doors open.

~~ Please come and enjoy the show ~~

OCTOBER 14

"Getting Comfortable with Machins" will be a Powerpoint presentation by Jeff Modesitt.

Jeff says there are more than 6,000 identifiable stamps in the series and he has spent the 1st few years trying to understand what makes each one unique.

Most of us have Machins in our collections. Here's a great chance to learn about them.



A missing pound sign error on a British Machin.

DEALER AND CLUB LISTS AVAILABLE

The library's publications with lists of dealers and clubs in Colorado and Wyoming is now available on a single sheet of paper. The type size is a bit small, but the information is all there in a convenient format. You may have one by writing to the library and enclosing an SASE.

NATIONAL POSTMARK COLLECTORS CLUB CONVENTION VISITS RMPL

Two dozen members of the Postmark Collectors Club from a dozen different states took a field trip from their national convention hotel in East Denver to the library on Thursday, August 3rd.

Several board members were on hand to greet the group, give short tours, and answer questions. They stayed for almost two hours and seemed to genuinely enjoy themselves. Several returned on Saturday morning to do more shopping in the library stamp and cover store.



Some visitors from the National Postmark Collectors Club convention were impressed that all the programs and projects of the RMPL are run entirely by volunteers.

The library tried to do its part to help out the convention by donating thousands of common modern covers for the conventioners to pour over and take what they wished. They expressed their appreciation with a \$100 donation.

We salute the 2006 National Convention of the Postmark Collectors Club and appreciate the interest of the participants in our library. We hope they return to their homes and tell their collecting friends about us!

THE RMPL EXPERTIZING PROCESS

Thursday Afternoon Banter

by Sergio Lugo

Should you happen to be in the RMPL on a Thursday afternoon, you'll see Sergio Lugo, Tom Surprenant, George Snyder and/or Jim Kilbane at the front table talking away and consulting a variety of books, attempting to reach agreement on whether stamps have been tampered with or forged.

Years ago Joe Lambert and some other collectors decided they needed a final resting place for counterfeits and fakes for which they had expertizing certificates from the American Philatelic Society, the Philatelic Foundation or Professional Stamp Experts.

As time passed, the library also accumulated a number of other stamps that were alleged to be fakes or forgeries. The mass eventually grew until we had more than 600 samples.

Last January we began the huge project of organizing them as a reference collection for library patrons.



FAKES and FORGERIES left to right:

- Nova Scotia #10. Appears to be lithographed. Originals are engraved.
- U.S. #300. Perfs cut off at top and bottom to make stamp appear to be #318.
- U.S. #372. Perfs cut off on all four sides to make stamp appear to be #373. See in particular the bottom margin.
- Iran #236. It is a Scott Type II stamp, and all such issues with an overprint are forgeries.

We started with the stamps of Heligoland which were reprinted or forged in significant quantities, but what were the characteristics that distinguished the fake from the real? Before we knew it, we were intently into the *German Philatelic Society Manual of Forgeries* trying to determine which of the forgery types we were looking at. It was a very slow process as we poured over each stamp. Was the bob of hair (chignon) fully rounded or partially rounded? Were the letters flat, missing a serif or in line with the others? We found a perforated stamp when the issue was rouletted. And so it went for the rest of the evening, with two of us able to agree on a whopping total of eight stamps as to their legitimacy and/or counterfeit nature. There went three hours worth of banter!

We had something more than just a bunch of

stamps that were fakes or forgeries. An explanation establishing exactly *why* a stamp is not legitimate is a guiding principle of our Thursday banter group. I feel an explanation is of inestimable value to the potential researcher/reviewer of our fakes and forgeries collection.

“An explanation establishing exactly *why* a stamp is not legitimate is a guiding principle of our Thursday banter group.”

We use a Kisaulis perforation gauge and five primary sources for our Miss Marple sleuthing:

- *Album Weeds or: How to Detect Forged Stamps* by the Rev. R. B. Earee, 1905.
- *The Expert's Book: A practical Guide to the Authentication of United States Stamps: Washington-Franklin Issues, 1908-1933*, by Paul W. Schmid, 1990.
 - *The Micarelli Identification Guide to U.S. Stamps: Regular Issues 1847-1934* by Charles N. Micarelli, 1991.
 - *The Serrane Guide: Manual of the Specialist-Expert in European and Non-European Stamps* by Frenand Serrane, 1988-1995.
 - *Scott's Catalogue*, the latest editions.

Having the resources of the RMPL close at hand makes the job a lot of fun. We have found answers in everything from a 1942 issue of *Mekeel's* to obscure clippings in our vertical files.

The product of all this is that the library now has a budding reference collection of fakes and forgeries as well as legitimate (in our estimation) stamps and local issues.

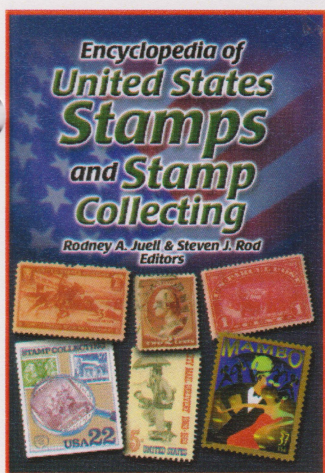
The collection is divided into eight volumes: Asia, Africa, Oceania, North America, South America, Europe; Europe - Germany, U.S., and U.S. - Washington Franklins. Found in the stacks under the catalog numbers, the digital images are easily accessed so you may see eye popping detail of the stamps.

All 600 + stamps should be done by December, but we keep adding more as folks hear of the peculiar chatter at the front of the library on Thursdays. Do stop by and have a peek - you'll be surprised at the progress we've made.

BOOK REVIEWS

Encyclopedia of United States Stamps and Stamp Collecting, edited by Rodney A. Juell & Steven J. Rod. Published 2006 by the United States Stamp Society. Available for \$25 to USSS members or \$30 to nonmembers, postpaid in the United States. USSS, Executive Secretary, P.O. Box 6634, Katy, TX 77491-6634.

There used to be two things that one needed in order to collect US stamps: a copy of the Scott US Specialized Catalogue and membership in the United States Stamp Society (USSS; not to be confused with the USSR). With the publication of this book, there is now a third necessity. Simply, it is an introduction – and often much more – to everything that you need to know to collect our country's stamps. The book begins with 31 chapters about major groups of US stamps followed by 31 chapters about stamp production and less familiar areas of philately. This may sound dry but Juell and Rod have made the information interesting to read, with extensive color illustration.



Each chapter begins with a discussion of the chapter's topic. This is followed by *Notes on Collecting*, with suggestions about how one might develop a collection based on the subject covered in the chapter. Personally, I found *Notes* to be the most interesting part of each chapter.

Following *Notes* is the *Almanac*, listing major events related to the subject; *What Others Have Said* (relevant quotations from prominent sources); and *Where to Find More Information*, both in the philatelic press and online.

The book concludes with three appendices. The extensive Glossary is particularly useful. This is followed by Print Resources, a bibliography (18 pages); and Internet Resources, a very limited (1 page) listing of a few websites.

This imbalance between the listing of print and web resources is unfortunate. Particularly for beginners, unless you live near a philatelic library such as the RMPL, philatelic books and

journals are much less accessible than is online information. In this day and age, a more extensive and less biased listing of websites would have been appropriate. At the very least, the Virtual Stamp Club (virtualstampclub.com), Linn's Stamp News (linns.com), the RMPL (rockymountainphilateliclibrary.com), and eBay (ebay.com) should have been included.

Further evidence of the slight paid to electronic resources can be found on page 97. The authors mention: "Two excellent web sites ..." but do not give the web addresses either on that page or in the listing of Internet Resources on page 727. In other chapters, at least some URLs are listed. However, a few more pages of internet listings would not have significantly changed the size of the book but would have further increased its value.

One more thing. In addition to the three "necessities" listed above, you do need stamps. These can be costly but if you buy them at the RMPL, a little money goes a loooooong way. So buy this book (cheap at twice the price), join the USSS, then come to the RMPL to get your stamps and use the catalogs.

John Bloor



Don Beuthel's Topical Helpline: Collecting and Exhibiting Tips. Published 2006 by the American Topical Association. Available for \$7 to ATA members or \$9 to nonmembers, postpaid in the United States. ATA, P.O. Box 57, Arlington, TX 76004-0057.

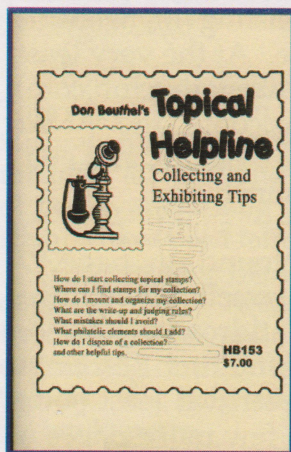
Topical collecting and exhibiting requires a good deal of creativity when it comes to acquiring and mounting stamps and covers on pages. This can lead to a lot of perplexing questions and for many years, the RMPL's own Don Beuthel came to the rescue by writing a *Helpline* column in the ATA's *Topical Time*.

The columns have been combined into an easy to read 72-page handbook, that answers questions ranging from "How do I start?" and "Where can I obtain stamps?" to "What mistakes should I avoid?", "What philatelic elements should I add to an exhibit?" and "How do I dispose of a collection?"

Don is one of the founders of the Rocky Mountain Philatelic Library and was its president for ten years. It is a pleasure to add

Continued on page 6

his informative book to our collection.



Besides his work at the library, Don is also a past president of the American Topical Association and was an accredited American Philatelic Society judge. His *Helpline* column ran from January 1996 through December of 2001: a total of six years of solid topical information on a wide range of subjects.

Don brought a wealth of experience to his column and now it is available to collectors everywhere who want to experience the fun, the educational benefits and the creativity that topical collecting affords to its followers.

This handbook contains thirty-two illustrations in black and white. It concludes with the new 2005 ATA Judges Evaluation Sheet for the Novice Exhibits Category for Topicals, written by Alan Hanks. This is a new category approved by the ATA Board of Directors last June and was established to help new exhibitors learn the ropes of exhibiting topical collections.

Dalene Thomas



Sue Dunn, Bill's widow, shows off "Bill's Garden" in back of the library to volunteers Mary Ellen Markel and George Wright. Sue's green thumb has made the flower bed a neighborhood attraction. Bill was one of the founders and directors of the RMPL.

T-REX CONSTRUCTION UPDATE

The off ramp from southbound I-25 to E. Evans Avenue is open! It is an important access on a major route to the RMPL and has been closed for several years. For the first time, the interstate is open with four lanes of traffic in both directions, so access to the library is much easier for people coming from the north.

WELCOME NEW MEMBERS

We extend a warm welcome to those who have joined the RMPL during July and August.

Douglas Bowman - Evergreen, Colorado

Harry Paul - Highlands Ranch, CO

Collects U.S., Canada, Pacific Islands

Mary Shulz - Fort Collins, CO

Collects U.S. and Flowers

William W. Weihmiller - Colorado Spgs, CO

Michael Buck - Berthoud, CO

Collects U.S. Revenues and Tax Paid

Frances Uhler - Aspen, CO

Collects U.S. Mint, Used, and BOB

Wayne Jackson - Parker, CO

Collects U.S., U.N., Laos, and General Foreign

Fritz Koether - Longmont, CO

James D. Mohrbacher - Littleton, CO

Carl Eck - Bailey, CO

Ronald Harbeck - Denver, CO

Collects U.S. Ireland, Dakota Territory Postal History

Richard Palestro - Aurora, CO

Robert Blundell - Littleton, CO

People's Republic of China

Tom Kean - Highlands Ranch, CO

Collects Gilbert and Ellice Islands, Ship Covers, Pre-1860 Texas Forts, Karnes County, Texas

Russell Struckman - Aurora, CO

Collects First Day Covers, Souvenir Pages

Carole Diane Sundine - Parker, CO

Collects Post Cards, Train, Air

Paul Lee - Littleton, CO

Nancy Loring - Golden, CO

Collects Postmarks

Vick Steward - Peoria, IL

Collects Postmarks

John S. Gallagher - Columbia, MD

Collects Postal History

Jeffrey Sipple - Aurora, CO

Collects U.S., Classics, Worldwide

Continued on page 7

DONATIONS RECEIVED

It is a pleasure to list the names of those who donated cash or philatelic materials to the library during June and July and to thank them for their generosity. Gifts were received, on average, at the rate of about one a day, and we welcome each one.

Of particular note is a donation of 32 books from the American Philatelic Research Library and Washington 2006. The books were entered in literature competition at the international show last May. They make a wonderful addition to our shelves.

Here is the complete list of donors:

Herman Axelrod, Dick Axtell, John H. Bloor, Dave Capra, Erwin Chaim, Roger Cichorz, Bill Cox, Paul Crissman, Ward Crowley, Sue Dunn, John Elverum, Erwin Engert, Linda & Ron Erickson, Catherine Fechner, Jack Harlan, Tom Higil, Elmer C. Hunter, Sharon Jacobs, Jim Kilbane, Ron Korzeniowski, George T. Krieger, Jim Lays, Frank Leitz, Harold G. Lord, Stanley J. Luft and Sergio Lugo.

Also, Glenn Mallory, Charles McClure, Jim McGer, Gary McIntyre, Harry W. Methner, Dasa Metzler, Mike Milam, Bill Mobley, Derrick Moss, Helen Murphy, Steve Nadler, Rudolph Najar, Randy Nilson, Stephen B. Pacetti, Bill Rapp, Imogene Rogers, Victoria Rubin, Roger Rydberg, Scandinavian Collectors Club, Ed Schenck, Gabor I. Sebo, Colin W. Spong, Richard Stanbaugh, Suzanne Teal, Dalene Thomas, United States Stamp Society, Mr. & Mrs. Ralph Walther, American Philatelic Research Library & Washington 2006, Arthur T. Weaver and Jack Willard.

TENTH ANNIVERSARY GALA

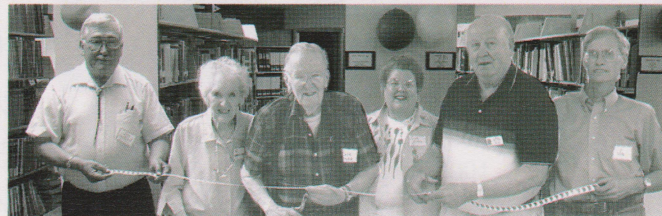
by Ron Mitchell

There was a lot of reminiscing going on at the library on the first Saturday of August. Nearly one out of ten of our 400+ members (many with spouses) dropped by to help celebrate the tenth year in our current building.

Don Beuthel remembered how, shortly after he and others sunk thousands of dollars of their own money into the building project, he was down on the floor on his hands and knees with Bill Dunn and Jack Willard, looking at several layers of carpeting and wondering how in the world they were going to get it all up and get

new carpeting down.

They looked up at each other and smiled and Don said something they were all thinking, "What the hell have we gotten ourselves into?"



The top photo shows the original ribbon cutting at the library 13 years ago at our original location with (l. to r.) Roger Purdue, Jim Ozment, Joe Weinman, Gregory Frantz, Jack Willard, Bill Dunn, Don Beuthel, Bob Blatherwick, Roger Rydberg and Jim Kilbane.

Below is a recreation of the ribbon cutting at the August 2006 party with (l. to r.) Jim Ozment, Vi Weinman (Joe's widow), Jack Willard, Sue Dunn (Bill's Widow), Don Beuthel and Jim Kilbane.

Of course, they got themselves into what has turned out to be a shining success in the world of stamp collecting. The founders, board members and volunteers are all very proud, and they love to share the story of how the library came about.

There was a short program, refreshments, and plenty of good conversation, so it was a good party and a good way to celebrate the past, and future, of the RMPL.

APEX Postage Stamp Show
September 9-10, 2006

Buckingham Square Shopping Center
Corner Havana St at Mississippi Av
Aurora, CO

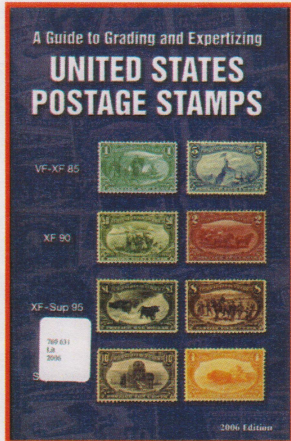
Saturday 10:00 AM - 6:00 PM
Sunday 11:00 AM - 4:00 PM

ADDITIONS TO THE SHELVES

UNITED STATES

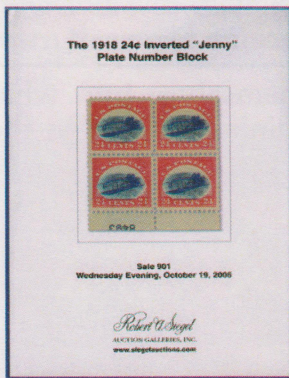


1851 Issue page example

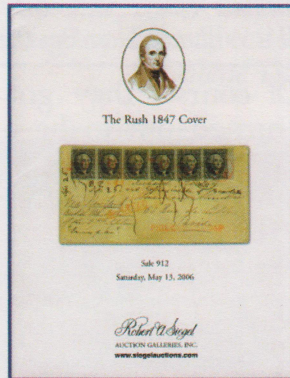


Guide to Grading

- The 1851 Issue of United States Stamps: a Sesquicentennial Retrospective*, edited by Hubert C. Skinner and Charles J. Peterson, 2006.
- Encyclopedia of United States Stamps and Stamp Collecting*, edited by Rodney A. Juell & Steven J. Rod, 2006. (See review on p. 5.)
- A Guide to Grading and Expertizing United States Postage Stamps* by William A. Little and Michael W. Sherman, 2006.



Inverted Jenny Auction



1847 Cover Auction

- Luminescent U.S. Stamps* by John S. Stark and Alfred G. Boerger, 1965.
- The 1918 24c Inverted "Jenny" Plate Number Block* by Joe R. Kirker and Scott R. Trepel, Siegel Auction Galleries Sale 901, 2005.
- 19th Century U.S. Postal History: A Special Service Prepared by Stanley B. Ashbrook for a Selected Group of Philatelists Who are Especially Interested in U.S. Postal History, Postal Rates, Postal Markings, and the Unusual in U.S. Domestic and Foreign Rate Covers, 1951-1957.*
- The Rush 1847 Cover* by Scott R. Trepel, Siegel Auction Galleries Sale 912, 2006.



Hawaii



Panama

HAWAII

A History of the Stamps of Hawaii: 1851-1900 by Col. Pat Hogan, 1980.

CENTRAL AND SOUTH AMERICA

Panama Postal Markings 1758-1950, Edited by Jim Cross, 2003.

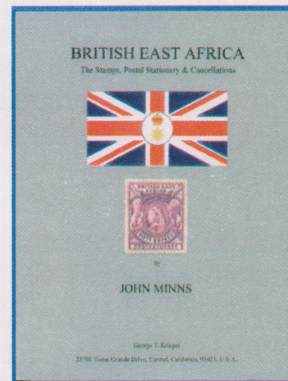
Postal Rates of Chile 1766-1959 by Ross Towle, 2003.

DANISH WEST INDIES

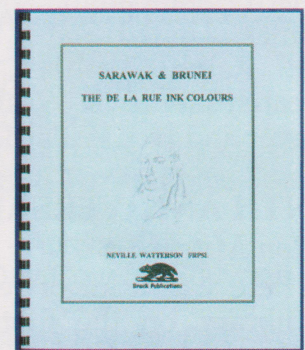
Bibliography of Danish West Indies Philately by Paul Wijants, 2001.

GREAT BRITAIN & THE COMMONWEALTH

Beating the Odds: The Story of Tattersall's Private Mail Network 1902-1930 by David McNamee, 2002.



British East Africa

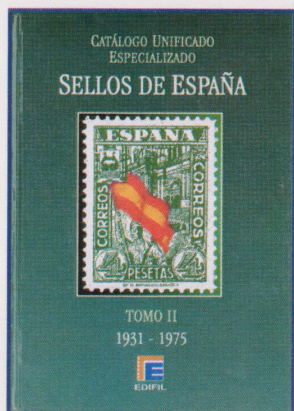


De La Rue Colours

- British East Africa: The Stamps, Postal Stationery & Cancellations* by John Minns, 2006. NOTE: If you are interested in writing a review for this book for the next *Scribblings*, please contact the editor.
- British North Borneo: Brunei & Sarawak Post-War Issues & the Crown Agents* by Neville Watterson, 2004.

New Zealand and Dependencies -- A Philatelic Bibliography, compiled by David R. Beech, Allan P. Berry and Robin M. Startup, 2004.
Sarawak & Brunei: The De La Rue Ink Colours by Neville Watterson, 2004.

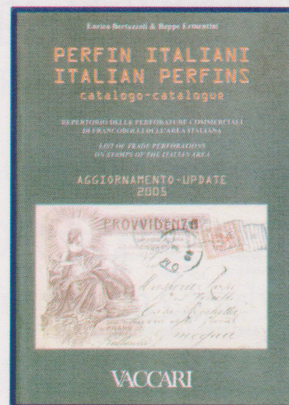
EUROPE



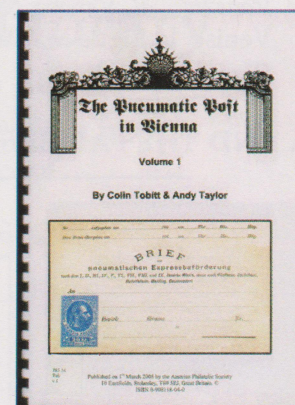
Spain 2 Vol. Catalog



Danish Advertising



Italian Perfins



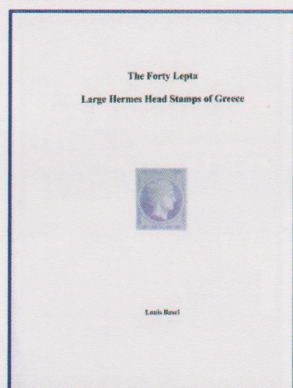
Pneumatic Post in Vienna

Michel Deutschland-Spezial Katalog 2006, Vol. 1: 1849-April 1945, Vol. 2: May 1945-Present
New Zealand and Dependencies--A Philatelic Biography, compiled by David R. Beech, Allan P. Berry & Robin M. Startup, 2004.
Norway - The Skilling Oscar Stamps by Tore Gjelsvik
Os Correios Posrugueses Entre 1853-1900 Carimbos Nominativos e Dados Postais e Etimologicos Tomo 1 by Pedro Marcal Vaz Peterir, 2000.
The Pneumatic Post in Vienna, Vols. 1, 2 & 3, by Colin Tobitt and Andy Taylor, 2005.
Prefilatelia Española, Vols. 1-4 by Manuel Tizón, 2004.
Revenue Stamped Paper and Adhesive Revenue Stamps of Belgium 1648-2003 by Emile J. Van den Panhuyzen, [2004?].
Romania: Principality of Wallachia 1820-1862 & United Principalities 1862-1872 by Fritz Heimbüchler, 2002.
The Russo-Japanese War, History and Postal History from the Kenneth G. Clark collection, 2005.
Tables of French Postal Rates 1849 to Date, 2nd Edition by Derek Richardson, 1996.

Catálogo Unificado Especializado de Sellos de España, Vols 1 (1850-1931) & 2 (1931-1975), 2005, pub. in color by Edifil
Danish Advertising Panes by James A. Gaudet



First Greek Stamp



Hermes Head Stamps

The First Greek Stamp : History, Royal Decrees, Dies, Plates, Printing by Nicholas Asimakopulos, 2005.
The Forty Lepta Large Hermes Head Stamps of Greece by Louis Basel, 2004.
German Stamp Color Names Made Easy: German - English and English - German by Dr. Erich Mathieu, 1949.
History of Portuguese Military Postal Service by Eduardo Barreiros & Luís Barreiros, 2000.
Italian Perfins Catalogue - Update 2005 by Enrico Bertazzoli & Beppe Ermentini, pub. by VBaccari, 2005.



Treskilling Yellow page example



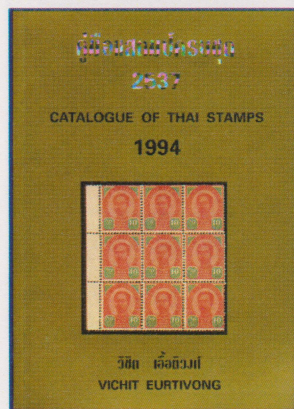
Trieste Venezia

The Treskilling Yellow: The Most Valuable Thing in the World, by Lars Fimmerstad, 2004.

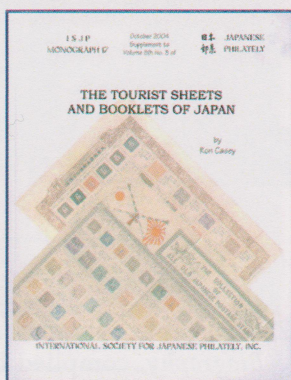
Continued on page 10

Trieste Venezia: il Vapore Nell'Ottocento (Triest-Venise, la Ligne Maritime) Edited by Franco Rigo, [no date].

ASIA AND THE FAR EAST



Thailand Catalog



Japanese Tourist Sheets

Catalogue of Thai Stamps: 1994 by Vichit Eurtivong.
Chinese Airmails and Their Forgeries by David Y. Lu, 2004.

Indian Government Fiscal and Judicial Stamps and Stamp Papers, Vol. 1 by S.M. Blatt, A. M. Mollah & D. Heppell, 2004.

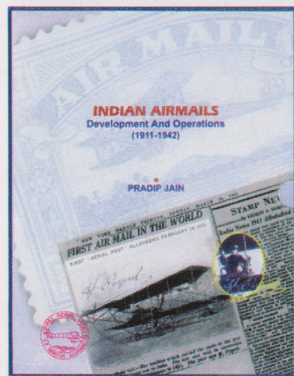
The Postage Stamps of Siam to 1940, 1979 Ed. by Richard Frajola; Revised 1994 by Richard Ostlie.

The Tourist Sheets and Booklets of Japan, ISJP Monograph 17 by Ron Casey, 2004.

The Variant Color Datestamps of Japan (1904.12.24-1934.06.21), ISJP Monograph 19 by Charles A.L.Swenson, 2005.

AIRMAIL

Handbook of Russian Aerophilately by Rudolph M. Najar, 2001.



Indian Airmails



1928 Olympics Mail

Indian Airmails by Pradip Jain, 2002.
Max: I Didn't Get to Know Him Very Well by A.D. Jones, 2004.

TOPICALS

Computers on Stamps and Stationery Vol. 2, ATA Handbook 152, by Larry Dodson, 2004.

Don Beuthel's Topical Helpline: Collecting and Exhibiting Tips, 2006. See review on pages 5-6.

4 Rings: The History of Audi by Peter C. Elias, 2005.

Men, Microbes and Medical Microbiologists by Han T. Seim, 2004.

Philatelic Witnesses: Stamps of Revolutions by Wolfgang Baldus, 2002.

The Pilgrim Pope John Paul II on Postage Stamps of the World 1978-2003 by Waldemar Chrostowski, 2003.

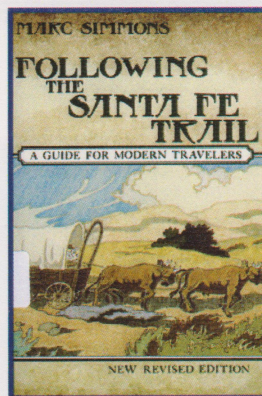
Registered Mail of the 1928 Amsterdam Olympic Games by Laurentz Jonker, 2006.

POST CARDS

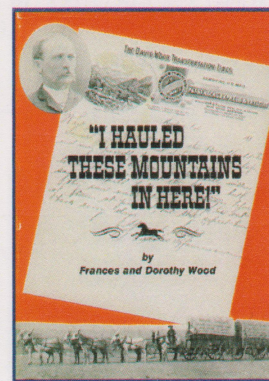
The Canadian Patriotic Postcard Checklist 1898 - 1928: "Thirty Years of Glory" by Michael J. Smith, 2001.

Las Tarjetas Postales Ilustradas de Espana Circuladas en els. XIX by Martín Carrasco, 2004.

COLORADO AND THE WEST



Santa Fe Trail



Western History Biography

Following the Santa Fe Trail: A Guide for Modern Travelers by Marc Simmons, 1986.

"I Hauled These Mountains in Here!" by Frances and Dorothy Wood, 1977.

The Navajo Atlas: Environments, Resources, People, and History of the Diné Bideyah by James M. Goodman, 1982.

Wells, Fargo & Company 1861 Pony Express Issues by Scott R. Trepel, 2005.

MISCELLANEOUS

The Care and Preservation of Philatelic Materials by T.J. Collings and R.F. Schoolley-West, 1989.

Rocky Mountain Philatelic Library

2038 South Pontiac Way, Denver, Colorado 80224

Phone: (303) 759-9921

E-mail: rmpl@qwest.net

Inernet: www.rockymountainphilateliclibrary.com

APPLICATION FOR MEMBERSHIP

++ Please Print All Information Clearly ++

Name: _____

Last

First

MI

Address: _____

Street

Apartment

City: _____ State: _____ Zip: _____

Phone No: () _____

E-mail: _____

I am a member of the following national philatelic organizations:

(Please provide membership numbers if you know them.)

American Philatelic Society _____ American Topical Association _____

Other organizations: _____

My collecting interests are: _____

MEMBERSHIP LEVEL REQUESTED:

NOTE: Checkout privileges begin at the Contributing Membership level, or \$25 per year.

REGULAR MEMBER [] \$ 15.00 / YEAR

CONTRIBUTING MEMBER [] \$ 25.00 / YEAR

SUSTAINING MEMBER [] \$ 50.00 / YEAR

PATRON MEMBER [] \$100.00 / YEAR

SELECT MEMBER [] \$250.00 / YEAR

BENEFACTOR MEMBER [] \$500.00 / YEAR

Payment Method:

Cash: _____

Check: _____

Signature: _____ Date: _____

Approved by: _____ Date: _____

The RMPL is an IRS 501(c)3 tax exempt organization.

...What's Happening at the RMPL...

"Come and Enjoy the Activities"

Monday 10:00 AM - 4:00 PM
Thursday 2:00 PM - 8:00 PM

Tuesday 10:00 AM - 4:00 PM
Friday 10:00 AM - 4:00 PM
Closed Sundays and Holidays

Wednesday 10:00 AM - 4:00 PM
Saturday 10:00 AM - 4:00 PM

SEPTEMBER 2006

September 2 - 4 CLOSED Labor Day Weekend

September 2 - Meeting - 10:00 AM
Scandinavian Collectors Club (The library will be open for this meeting only.)
September 6 - Meeting - Aurora Stamp Club
6:30 PM Trading; 7:30 PM Meeting & Program

September 9 - 9:00 AM

Second Saturday at the RMPL

Program by Dave Weisberg
"Arago: New Window into the Rarities of the World"

September 9 - Meeting - 10:00 AM

Mexico/Latin America Study Group

September 9 - Meeting - 2:00 PM

Universal Ship Cancellation Society
U.S.S. Colorado Chapter

Note: TOPIC will meet at APEX 2006

September 13 - Meeting - 7:00 PM

Denver Germany Stamp Club

September 16 - Meeting - 10:00 AM

Metro Denver Young Stamp Collectors Club

September 21 - Meeting - 7:00 PM

RMPL Board

All library members are welcome.

September 23 - Workshop - 10:00 AM

RMSS/RMPL Exhibiting Workshop
(Please call for reservations.)

September 23 - Meeting - 2:00 PM

China Stamp Society

September 26 - Meeting - 7:30 PM

Rocky Mountain Stamp Show Committee

September 27 - Meeting - 7:30 PM

Israel Stamp Club

OCTOBER 2006

October 4 - Meeting - Aurora Stamp Club
6:30 PM Trading; 7:30 PM Meeting & Program

October 7 - Meeting - 10:00 AM

Scandinavian Collectors Club

October 7 - Meeting - 2:00 PM

Topical Collectors in Colorado (TOPIC)

October 11 - Meeting - 7:00 PM

Denver Germany Stamp Club

October 14 - 9:00 AM

Second Saturday at the RMPL

Program by Jeff Modesitt

"Getting Comfortable with Machins"

October 14 - Meeting - 10:00 AM

Mexico/Latin America Study Group

October 14 - Meeting - 11:30 AM

Rocky Mountain Aerophilatelists

October 14 - Meeting - 2:00 PM

Universal Ship Cancellation Society

U.S.S. Colorado Chapter

October 21 - Meeting - 10:00 AM

Metro Denver Young Stamp Collectors Club

October 24 - Meeting - 7:30 PM

Rocky Mountain Stamp Show Committee

October 25 - Meeting - 7:30 PM

Israel Stamp Club

October 28 - Exhibit Workshop - 10:00 AM

(Please call for reservations.)

October 28 - Meeting - 2:00 PM

China Study Group

...Show Schedule...

September 9th & 10th - APEX - Aurora Philatelic Exhibition

Buckingham Square Shopping Center - Corner of Havana St. and Mississippi Ave

Saturday 10:00 AM - 6:00 PM Sunday 11:00 AM - 4:00 PM - Contact Tom Surprenant - (303) 341-9997

September 30 - Lakewood Stamp Exchange - Saturday Stamp Bourses

Clemments Community Center - 1580 Yarrow, Lakewood, CO - Contact Pat McNally - (303) 433-0642

October 7 - Platte River Postcard and Paper Show

Knights of Columbus - 3800 S Windermere St - Englewood, CO - Bill & Carol Mobley - (303) 761-3755

Scribblings is published bimonthly by the Rocky Mountain Philatelic Library, 2038 S Pontiac Way, Denver, CO 80224

The Rocky Mountain Philatelic Library is a chartered Colorado nonprofit corporation. Membership subscriptions over that for the regular membership, and donations of appropriate philatelic materials, are deductible for U.S. income tax purposes. The RMPL is an Internal Revenue designated 501 (c)(3) charitable organization.

RMPL Board of Directors

President and *Scribblings* Editor: Ron Mitchell - Operations Manager: Don Beuthel - Vice-President: Jim Kilbane

Corresponding Secretary: Robert Brown - Recording Secretary: Maury Pautz - Treasurer: Bob Blatherwick

At Large: Tim Bartshe - Sergio Lugo - Steve Schweighofer - Dalene Thomas - Emeritus: James L. Ozment and John H. Willard