

# Scribblings

...from the Rocky Mountain Philatelic Library



Ellengail Beuthel, Librarian...

Vol. 14 - No. 6

2038 S. Pontiac Way, Denver, CO 80224

November-December 2006

www.RockyMountainPhilatelicLibrary.com

303.759.9921

E-mail - rmpl@qwest.net



## In this Issue...

Donations Received...p. 4

New Members...p.4

Book Reviews...pp. 5-6

Multimedia Available at the Library...p. 7

The RMPL at APS StampShow 2006...p. 7

Stamp Camp at StampShow. by Don Dhonau...pp. 7-8

Additions to the Shelves...p. 8-10

Membership Application...p. 11

Schedule.....p. 12

## Second Saturday at the RMPL...

November 11 -  
No Program  
Veterans Day

December 9 - "Delandre's World War I Military Poster Stamps" by John Bloor

## About the Author...

Peter Laux is a retired geologist and enjoys anything that gets him outdoors. He's been a stamp collector most of his life.

## An International Adventure

### A GRAND TIME IN GUADALAJARA

By Peter Laux, RMPL Member

I have just returned from a wonderful visit to Guadalajara, Mexico's second largest city. The occasion was EXPOJALFIL 2006, the annual stamp show put on by the local club, Jalisco Filatélico. It was special this year because MEPSI (the Mexico Elmhurst Philatelic Society International) held its annual meeting in conjunction with this event which also celebrated the 150th anniversary of Mexico's first postage stamp issue. As a director of MEPSI and head of its Publicity Department, I try to attend all annual meetings in fulfillment of my duties as well as to enjoy the social activities and ambiance of the location. As usual, our hosts in Mexico arranged a very interesting and entertaining program of events.



The Government Palace in Guadalajara, Jalisco. The stamp was issued in 1942 to commemorate the 400th anniversary of the founding of the city. Photo by the author.

Our hotel was in the middle of the city several blocks from each of the two show venues. After fighting three blocks of heavy pedestrian and vehicle traffic, day and night, we came to the plaza area, the historic center of Guadalajara. Four spacious plazas arranged in the form of a large cross bordered the main public buildings with the magnificent cathedral in the center. Most date from early Spanish Colonial times and all were constructed with massive blocks of pale gray volcanic rock quarried nearby. City Hall

Continued on page 2

RMPL



Souvenir postcard with a special cancel commemorating the ringing of the postal, or correos, bell for the first time in 87 years. The bell was rung by local officials to honor Expojalfil 2006 and the 150th anniversary of Mexico's first stamp issue.

and the State of Jalisco government building feature famous murals in their extensive stairways and in some legislative chambers.

Walking a few blocks east from the plaza area along a wide pedestrian zone we came to the historic Hospicio Cabañas where the philatelic exhibits were on display. They were varied and interesting but suffered from poor lighting in narrow hallways of the former orphanage and convent. However, nearby in the chapel is one of Mexico's finest works of art- frescoes by José Clemente Orozco, including his masterpiece "Mankind in Flames" in the dome. A few blocks north from the plaza area was the main show venue, a building named Fundación Jesus Alvarez del Castillo, after a recently deceased newspaper owner and philatelist. His extensive collection was on display in a room off the second



MEPSI's next annual convention will be at the Rocky Mountain Stamp Show May 18-20, 2007. Local MEPSI members and the RMSS committee started planning for the event last June.

floor courtyard. The bourse was in the cloisters around the courtyard. MEPSI meetings and the show auction took place in adjacent rooms.

The social activities kept us busy and well entertained. They began Thursday afternoon with a guided walking tour of the historic city center. The tour ended up in front of the cathedral in time for the ringing of the "Correos" bell in one of the steeples. The huge bronze bell, cast in 1769, was used to announce the arrival of dignitaries and government decrees. It had been 87 years since it last was rung but it still sounded magnificent. Under a tent nearby, Servicio Postal Mexico (the Mexican Postal Service) unveiled a special cancel for the occasion. I managed to get one on a show post card using a stamp issued last year commemorating 100 years of organized philately in Jalisco. That evening the show hospitality room in the hotel featured drinks and

Continued on page 3



The stamp bourse was held in the edge of the courtyard of the Fundación Building, one of two venues for the show. The competitive exhibits were in the Hospicio Cabañas nearby. Both are in the heart of Guadalajara. Photo by the author.

delicious, authentic Mexican snack food. A few of us attended an exhilarating piano concert by a prominent local musician at the Fundación.

Friday was field trip day. There was a big turnout because the destination was the town of Tequila and its famous José Cuervo distillery! First we visited vast fields of blue Agave and saw how it was grown, tended, and harvested. In town we stopped by the local post office, a big step back in time, then proceeded to the José Cuervo complex. Their sprawling visitor center was clean, cool and most welcoming, complete with bars, spacious dining areas, displays and exhibits of old machinery and artwork, and, of course, a large shop full of arts, crafts, and tequila. The tour of the distillery, founded in 1795, was thorough and included tasting of all their products, even the real

lunch, which was a delicious meal with local specialties.

Saturday was a busy day. MEPSI meetings filled my morning then it was time for the auction. Fernando Perez-Maldonado of La Filatelia Mexicana from Monterrey offered over 1300 lots to an eager audience of many Mexicans and a dozen gringos from the US attending the show. That evening was the awards banquet. Before dinner we were entertained by a peppy Mariachi band (Guadalajara is the home of Mariachi) then flashy folk dancers, all the while offered all the tequila we wanted or dared to drink. The awards were presented after a wonderful meal with all you wanted food and tequila. My wife and I departed for home Sunday morning, but the remaining attendees were offered a bus trip to Tlaquepaque for arts and crafts shopping. For us, it was another wonderful visit to Mexico.

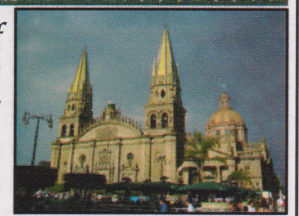


One of the famous murals in the Government Palace on Scott 1448, issued in 1986 for the 175th anniversary of the death of Miguel Hidalgo. The artist is José Clemente Orozco.

Miguel Hidalgo initiated Mexico's fight for independence. He is depicted on Mexico's first postage stamps, shown on the souvenir postcard on the preceding page.



A strip of stamps issued in 1992 for the 450th anniversary of the founding of Guadalajara, the second largest city in Mexico. Left to right: Painting of the founding; seal of the city; locations of the first four communities; the Municipal Palace (City Hall); the cathedral in the center of the main plaza. The "Bell of the Mail" is in the right, or south tower. It was melted in 1769. Photo by the author.



## News from the RMPL ...

### SECOND SATURDAY PROGRAMS

#### NOVEMBER 11 NO PROGRAM

Since the second Saturday falls on Veteran's Day this year, the library will be closed and there will be no program.

Fly the flag and honor our veterans.



#### DECEMBER 9

John Bloor will present *Delandre's World War I Military Poster Stamps*.



Examples of Delandre's work. He designed more than 4000 different poster stamps.

They were issued for units of the French and other allied armies, the Red Cross, and other subjects. These cinderellas are very attractive and colorful and have become highly collectible. The talk will describe these stamps and events surrounding their publication and sale.

Second Saturday programs begin promptly at 9:00 AM, and are over by 10:00 AM.

Complimentary coffee and donuts.  
Everyone is welcome!

#### DONATIONS RECEIVED

The library received 85 donations from 74 donors during August and September. Each one is appreciated.

Here is the complete list of those who gave cash or philatelic items:

Carl Anderson, Jim Atkinson, John B. Aycrigg, Steven Bahnsen, Gloria Bans, Tim Bartshe, Walton

Beauvals, Phillip R. Beutel, Steve J. Bohnsen, John H. Bloor, Lewis Bussey, Fritz Carrell, Bill Cox, Thomas Crawford, Joe Crosby, James Debrds, Patricia Dewey, Don Dhonau, Sue Dunn, Bob Easterly, Lois Edgar, Lee Erhard, Nolan S. Flowers, Jr., Jim Fredlund, Caleb Gates, Perk Gibbs, Leslie Gorsuch, Great Britain Collectors Club, John Grigg, Jack A. Harlan, Tom Hession, Thomas Higel, Jack Holden, Michael Horan, and Fred Huskins.

Also Jim Johnson, Paul Kendall, Jim Kilbane, William A. Knott, Charles J. LaBlonde, Peter Laux, Jim Lays, Glenn Mallory, Mike Maselli, Eugene McGurer, Eduardo Barajas Mendoza, Mike Milam, Knud Mohr, Myron Molnau, John C. Monson, Jim Moorman, Steve Nadler, Steve Pacetti, Harry Paul, Dorothy Peck, James Peterson Estate, William Plachte, Bill Rapp, Robley Rhine, Lloyd Richards, Dan Ringo, Theo Sampson, Scandinavian Collectors Club, Bill Schulz, Carla Shaver, George Snyder, T. W. Ten Eyck, Shiela Thomson, Eldon Todd, Civia Tuteur, Mark Tyx, Vi Weinman, David Weisberg, Steve Wineteer, and Matt Zieringer.

#### WELCOME NEW MEMBERS

We extend a warm welcome to those who have joined the RMPL during September and October:

Charles Peterson, Laurel, MD  
Philatelic Literature

Nicholas Lombardi, Moutainside, NJ  
Collects 2nd Bureau Issues, Registered

Stephen D. Schumann, Hayward, CA  
Collects Worldwide Postal Stationery

Michael Gilchrist, Highlands Ranch, CO  
Collects U.S., Worldwide

Edward Feist, Centennial, CO  
George Machovec, Denver, CO

Pre 1970 U. S. and Russia  
Michael D. Meteli, Grand Junction, CO

Collects U.S., Postal History  
Dennis Maves, Arvada, CO

Stamp Dealer  
Collects U.S., State Revenues

Bill Boender, Pinedale, WY  
Collects U.S., Vatican

Ron Lampo, Broomfield, CO  
Eckhard Pobuda, Monument, CO

Collects Germany  
Dr. Lon R. Horwitz, Denver, CO

Collects Known Artists, U.S. Errors  
Travis Searls, Castle Rock, CO

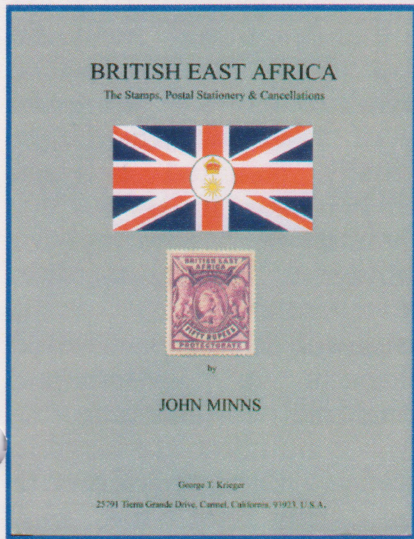
Collects 1840-1940 Worldwide  
Terry Stoehr, Arvada, CO

Collects General U.S.

## BOOK REVIEWS

*British East Africa: The Stamps, Postal Stationery & Cancellations* by John Minns, published 2006 by George T. Krieger. Limited edition of 650 copies. Available for \$65 from the publisher at 25791 Tierra Grande Dr., Carmel, CA 93923. E-mail: georgekrieger@sbcglobal.net.

John Minns' British East Africa handbook, written in 1980, has been updated with all the discoveries made since then, thus making his current knowledge and extensive records available to philatelists interested in this field of study.



The book opens with eight color plates with covers, proofs, provisionals, and overprint varieties that immediately catch the eye. One is tempted to brew a pot of tea and seek a leather chair! Chapter I chronicles the establishment of mail service, initially through Zanzibar where a

branch of the Indian Post Office opened on 1 October 1875. The Imperial British East Africa Company was granted a Royal charter on 3 September 1888, increasing Britain's sphere of

*"One is tempted to brew a pot of tea and seek a leather chair!"*

influence on the East African mainland. The first stamps sent out were the contemporary 1d, 2d, and 5d issues of Great Britain overprinted "British East Africa Company" by De La Rue.

Subsequent chapters examine the Imperial British East Africa Company definitives, the handstamped and manuscript provisionals, the protectorate handstamps, "On India" provisionals, "On Zanzibar" provisionals, and the De La Rue definitives. The book is replete

with photographs of covers and varieties, and detailed descriptions of how to detect forgeries. The times come to life with numerous extracts from official correspondence, archives, and notes from other experts on British East African philately.



*One of eight color plates which the reviewer indicates make the British East Africa book a standout.*

Final chapters discuss the postal stationery, Indian stamps used in British East Africa, cancellations (including earliest and latest recorded dates of use of each type), and Uganda mail. In addition to the index, the book concludes with four appendices. Appendix I is a check list of postage stamps, proofs, and specimens. What varieties may be hiding in one's stockbook? And there are varieties in abundance! Appendix II looks at invoice dates and quantities dispatched. A Check list of postal stationery appears as Appendix III, followed by a bibliography, Appendix IV.

This is a quality book of the highest order, deserving of coffee table status if one's spouse allows! On second thought, if you collect British East African, it is a valuable tool that will probably never leave your side. It is everything a specialist study should be!

*Jim Lays*

**Book Reviews, continued**

*The Suspension of United States Mail to Switzerland 1942 to 1944/1945* by Charles J. LaBlonde, published 2006 by the American Helvetia Philatelic Society, Asheville, NC. Available from the author for \$20 postpaid to Canada and United States addresses. Charles LaBlonde 15091 Ridgefield Lane, Colorado Springs, CO 80921-3554.

The Second World War severely disrupted mail delivery throughout the world. Switzerland, despite its neutrality, was no exception. Between 1942 and the end of the war, mail flow from the US into Switzerland was suspended. Until now, the details of this suspension were not understood. LaBlonde, with careful research, fortunate acquisition of covers, and great patience has filled in the missing parts of the story.

occupying Vichy, thereby eliminating the only route by which US mail could reach Switzerland.

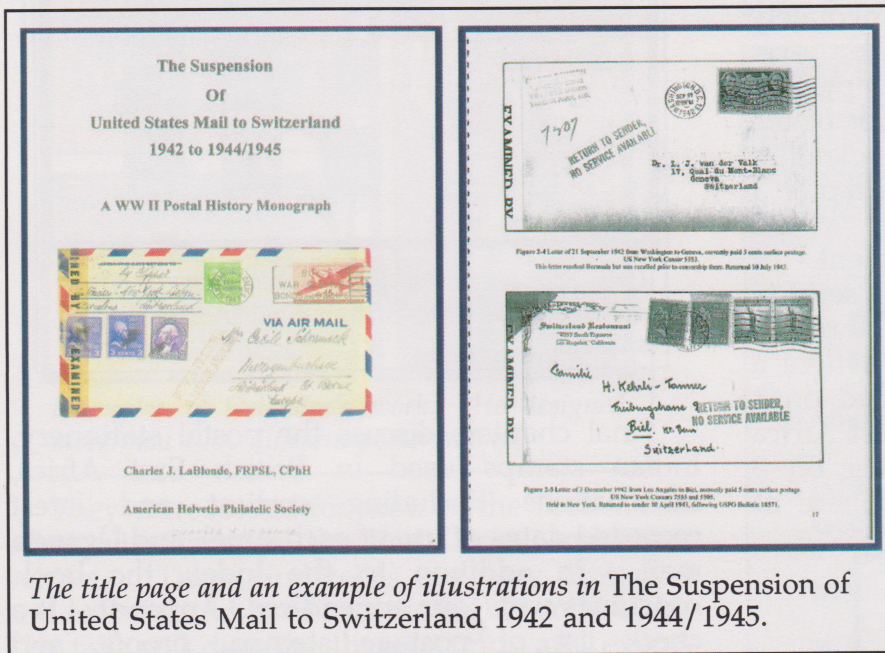
*"You may discover an interest in postal history detective work that you never knew you had."*

Although "... Switzerland is never mentioned by name in the suspension announcements [from the USPO] ...", this resulted in a *de facto* suspension of mail to Switzerland from the US. LaBlonde speculates that "... the US really did not understand that it was suspending mail to Switzerland by suspending mail to Continental France." The flow of mail from the US to Switzerland gradually resumed between November 1944 and January 1945.

This, then, is the background for the remainder of the monograph. LaBlonde examines the consequences of this suspension on many aspects of Swiss-bound international mail. In his words, "... I have allowed numerous covers and ... supporting documentation to form the story [of the mail suspension] ..." Of the 84 pages, about two-thirds are taken up by covers and documents. The remainder is very helpful explanatory and interpretive text. There is also an extensive bibliography.

LaBlonde has previously written about and exhibited the postal history of Switzerland, WWII, and the intersection of these areas. His knowledge clearly shows in this latest publication. Although it is but a small part of the story of mail disruption during the war, the book provides a fascinating glimpse into this complex subject. It may not appeal to everyone, but take a look at it. You may discover an interest in the detective work of postal history that you never knew you had. Quoting again from the book, "The study of WWII postal history is still filled with ... exciting possibilities for discovery."

*John H. Bloor*



*The title page and an example of illustrations in The Suspension of United States Mail to Switzerland 1942 and 1944/1945.*

Early in WWII, the US was a neutral country and had no restrictions on mail. On December 11, 1941, four days after the Japanese attack on Pearl Harbor, the United States Post Office issued an order stating that mail would no longer be transmitted to "... any place under the control of Germany or Italy." The order specifically stated that this included "... all of continental Europe except ... Switzerland, ... unoccupied France [i.e. Vichy] ..." and some other places. This was fine until November 8, 1942 when the US invaded North Africa. The invasion worried Germany. They responded by

## MULTIMEDIA AVAILABLE SLIDES, VHS PROGRAMS, CDS

Multimedia programs and books have been moved from the back room onto shelves in the kitchen area where they may be easily accessed and checked out by members.

Board member Dalene Thomas keeps the slide show index up-to-date and reports there are now 101 programs, about half of them with scripts.

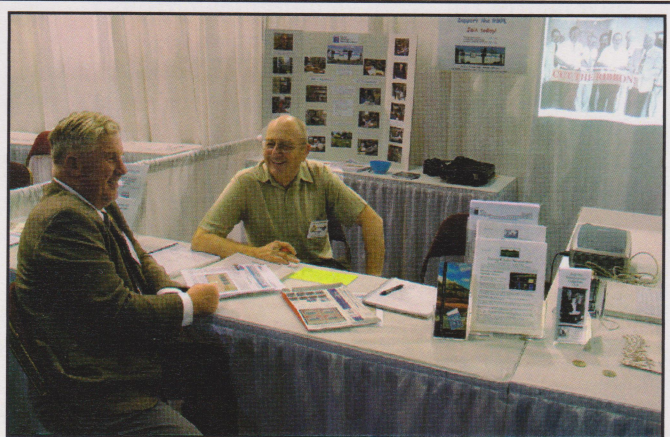
In addition, there are two dozen CDs with stamp presentations and a dozen different VHS video titles.

These programs are, of course, available for clubs, and they are also available for routine checkout for research or enjoyment by members, just like any book. You may also check out the slide projector for a day or two if you do not have one.

## THE RMPL AT STAMPSHOW 2006

The Rocky Mountain Philatelic Library's national image received a big boost at APS StampShow 2006 in Chicago in late August. Volunteers manned a society booth all four days of the show.

We had a trifold posterboard with pictures to tell the RMPL story, along with a digital video presentation to attract the attention of passers-by.

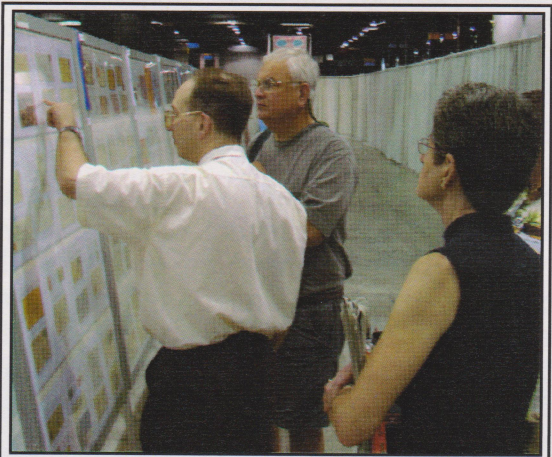


RMPL volunteer Ron Hill chats with a visitor at the RMPL booth at APS Stampshow 2006 in Chicago.

Visitors picked up 100s of our now famous "Round Tufts" and many past issues of *Scribblings* were given away. Most importantly, we had the opportunity to chat with many collectors and introduce them to the fact that there is a philatelic library in the Denver area.

Here is a list of twenty members of the RMPL who signed the guest register at our table in Chicago, including three new members who signed up at the show:

Carl Barna, Tim Bartshe, Ruth Caswell, Don Dhonau, Erl Fossum, Gary Hendren, Ron Hill, John L. Larson, Nicholas Lombardi, Sergio Lugo, Ron Mitchell, Steve Pacetti, Charles Peterson, Edwin "Win" Schaeffer, Stephen D. Schumann, Charles Shoemaker, Web Stickney, Civia Tuteur, Paul E. Tyler, Betty Walther, and Ralph Walther.



RMPL member Carl Barna (center) went on a tour of exhibits at StampShow which was led by APS Deputy Executive Director Ken Martin (left).

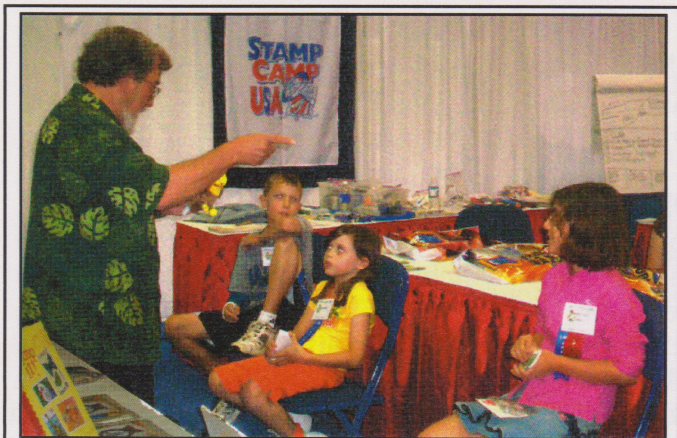
Congratulations to RMPL members who exhibited at the show: Tim Bartshe (*Revenues of Ecuador*, single frame, silver medal), Ruth Casswell (*U.S. Advertising Covers for Book Publishers and Sellers, 1855-1910*, single frame, gold medal), and Marc Gonzales (*Mexico - The Hidalgo Provisionals of 1867-1868*, gold medal).

## STAMP CAMP AT APS STAMPSHOW by Don Dhonau, RMPL Volunteer

I attended Stampshow 2006 in Chicago to help with the RMPL table, and also to enroll in training for Stamp Camp, USA. Stamp Camp is a twelve-year-old nonprofit organization designed to teach children ages 8-14 about philately, and to challenge them in the use of stamps and stamp collecting as tools in education.

The program was begun by Cheryl Edgcomb, postmaster in Knoxville, PA. Cheryl

*Continued on page 8*



Don Dhonau learned techniques to use with programs for youngsters at the RMPL during APS Stampshow 2006 in Chicago. Photo by Cheryl Edgcomb.

is unbelievably energetic, very resourceful, and has worked with teachers, schools, stamp shows and clubs throughout the country. She is supported by the United States Postal Service, the American Philatelic Society, the National Association of Postmasters, and many volunteers, clubs and local resources.

Stamp Camp youth learn individual skills and they work in groups, too. They are exposed to postal history, collecting tools, and the diversity of the hobby. They gain practice in developing ideas, and begin to experience the fun of displaying their work.

Youth at the RMPL will benefit from ideas from Cheryl and others, as they continue to enjoy collecting, learn important skills and help plan their own activities. Expect to see our youth exhibit more at local shows, introduce you to 3-D exhibits, earn "cash" for their own auctions, and other ventures.

As the youngsters learn and have fun together through their hobby, please know that they appreciate your support. Your donated stamps and other materials make their club possible, as do your occasional financial gifts.

Our immediate need is for covers with slogan cancels, covers from special events, covers with commemoratives, or modern postal history. Thanks for sharing! Thanks for your support! Thanks for recruiting other youth for our third Saturday morning 9:30-12:00 programs!

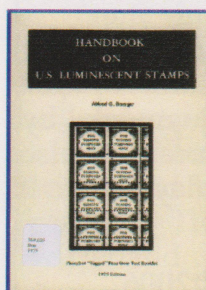
One more thing: During the Stampshow awards banquet, the success of Cheryl

Edgcomb and Stamp Camp USA was honored by the Washington 2006 Committee when it gave the organization \$50,000 out of its surplus funds for continuation and expansion of the program.

It is encouraging to see that all of philately recognizes how important it is to involve youth in the hobby.

## ADDITIONS TO THE SHELVES

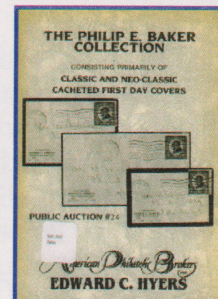
### UNITED STATES



Luminescence



Jenny Invert

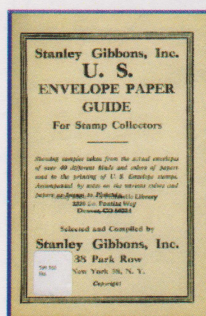


FDCs

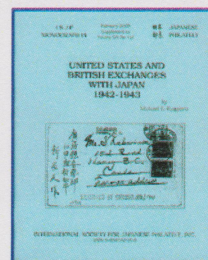
*Handbook on U.S. Luminescent Stamps* by Alfred G. Boerger, 1975.

*The Jenny Invert Plate-Number Block: The Story Behind the World's Greatest Stamp Rarity* by Matthew Healey, 2006.

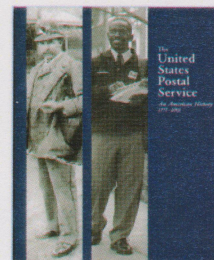
*The Philip E. Baker Collection Consisting Primarily of Classic and Neo-Classic Cacheted First Day Covers*, an auction by American Philatelic Brokers, 1980.



Envelope Papers



U.S. Exchanges



U.S.P.S. History

*Stanley Gibbons, Inc. U.S. Envelope Paper Guide for Stamp Collectors Showing Samples Taken from the Actual Envelopes*, [1940s?].

*United States and British Exchanges with Japan 1942-1943* by Michael E. Ruggiero. International Society for Japanese Philately Monograph 14, 2003.

*The United States Postal Service: An American History 1775-2002*, Published by the United States Postal Service, [2003?].



## HAWAII



The Grinnells, cover and page example

*The Grinnell Missionaries: Genuine or Forgeries?* by George H. Grinnell, John A. Klemann, Calvet M. Hahn and Vincent and Carol Arrigo, 2003.

## EUROPE



Moser Page Example

Strohofer Page Example

A series of books, each one featuring a designer for stamps of Austria and published by the Austrian Government Printing Office. In German with illustrations, many in color. No authors listed:

*Koloman Moser*, [no date.]

*Hans Strohofer: Aguarolle Zeichnungen Briefmarken [Watercolor Designer of Postage Stamps]*, 1961.

*Wilhelm Dachauer: Gemälde und Briefmarken*, 1963.

*British Postal Stationery* by A. K. Huggins, 1971.

*Bulgarien Postgeschichte und Postalische Ausgaben Einschliesslich Einer Detaillierten Studie der Poststempel 1878-1935* by D. Zagorsky, 1985.

*Der Österreichische Briefmarkenstich* [No author.], published by the Austrian Government Printing Office, 1965.

*Deutsche Bundespost Die Postleitzahl [German Post Office Postal Codes]*. [No author.] Includes an alphabetical listing of towns and cities. 1973.

*Handbuch Bulgarien: Postwertzeichen, Teil 1 1879-1944* by Rolf Weinbrdecht, 1993.

*Kleine Kunstgeschichte der Österreichischen Briefmarke 1945-1968*, [No author.], published by the Austrian Government Printing Office, 1968.

*The Michel Stamp Catalogue: An Introduction for English Speaking Readers*, compiled by Martyn Yeo, 1995.

*Postal Stationery of Great Britain* by T. Brightmore, [1983?].

*The Will Payne English Companion to the Michel 'Deutschland-Spezial' Katalog: Germany: World War One Occupations 1914-1918*, 1998.

## AFRICA

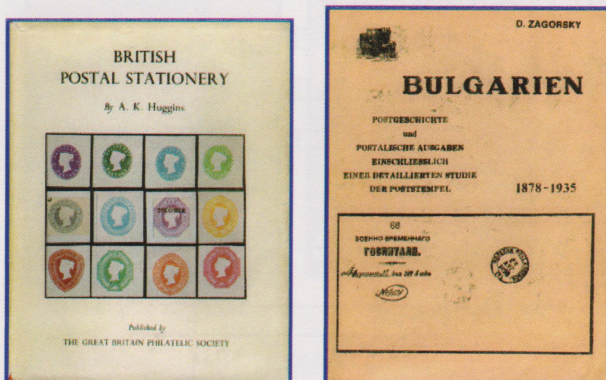


East Africa

East Africa Page Example

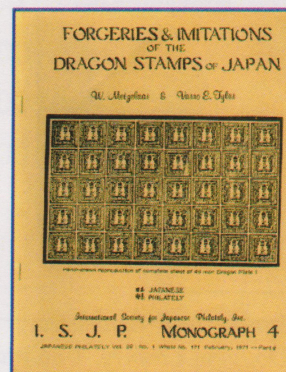
*The John Sussex Collection of East Africa*, Cavendish Philatelic Auctions, 1999, with prices realized.

## FAR EAST

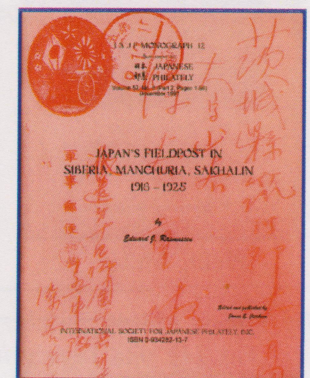


British Stationery

Bulgarian Stationery



Dragon Stamp Forgeries



Japan's Fieldpost

Continued on page 10

*Forgeries & Imitations of the Dragon Stamps of Japan* by W. Metzelaar & Varro E. Tyler. International Society for Japanese Philately Monograph 4, 1971.

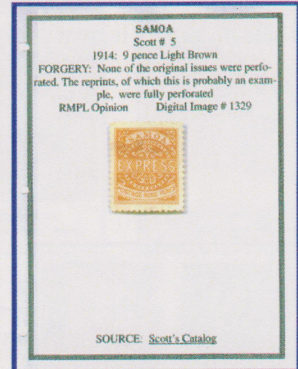
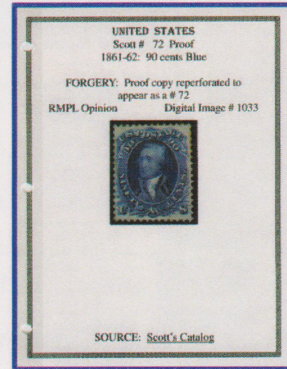
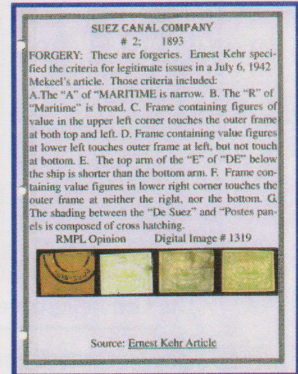
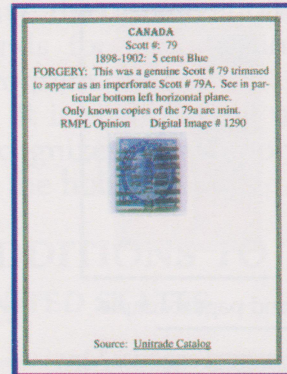
*A Guide to the Cherry Blossom Series* by Milton T. Montgomery. International Society for Japanese Philately Monograph 2, 1969..

*Japan's Fieldpost in Siberia, Manchuria, Sakhalin 1918-1925* by Edward J. Rasmussen. International Society for Japanese Philately Monograph 12, 1997

*A Specialized Listing of the Japanese Occupation Stamps of China* by Jack G. Niuelson & Ralph A. Weil. International Society for Japanese Philately Monograph 11, 1995.

*The Wada Cherry Blossom Forgeries* by Varro E. Tyler & Milton T. Montgomery. International Society for Japanese Philately Monograph 6, 1974.

## MISCELLANEOUS



### Fakes & Forgeries Page Examples

*Fakes and Forgeries: RMPL Reference Guide*, compiled by Sergio Lugo, Tom Surprenant, George Snyder and Jim Kilbane, 2006.

Part I: Africa

Part II: Asia

Part III: Europe

Part IIIA: Germany

Part IV: N. America

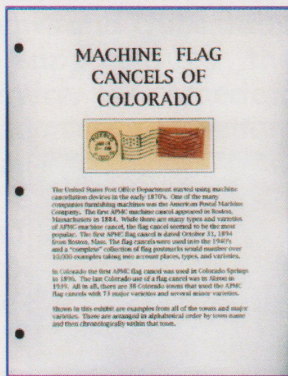
Part V: Oceania

Part VI: S. America

Part VII: U.S. Washington-Franklins

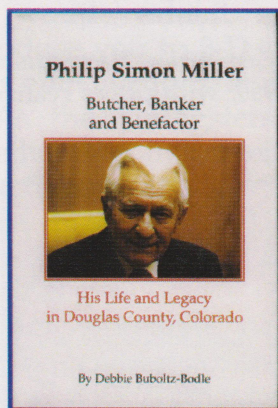
Part VIII: U.S.

## COLORADO AND THE WEST

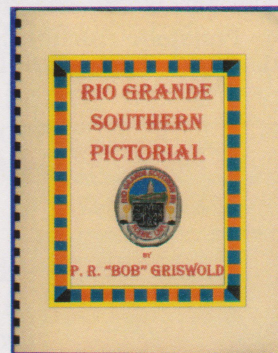


Machine Cancels Title Page & Page Example

*Machine Flag Cancels of Colorado*, an exhibit by Donald G. Beuthel, 2006.



Phillip Miller



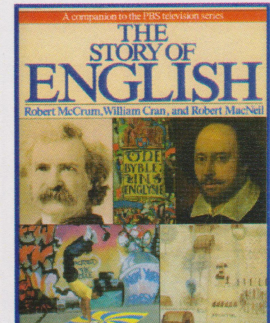
Rio Grande Southern

*Philip Simon Miller: Butcher, Banker and Benefactor: His Life and Legacy in Douglas County, Colorado* by Debbie Buboltz-Bodle, 1998.

*Rio Grande Southern Pictorial* by P.R. "Bob" Griswold, 2006.



On Language



Story of English

*On Language* by William Safire, 1981.

*The Story of English* by Robert McCrum, William Cran, and Robert MacNeil, 1986.

# Rocky Mountain Philatelic Library

2038 South Pontiac Way, Denver, Colorado 80224

Phone: (303) 759-9921

E-mail: rmpl@qwest.net

Internet: www.rockymountainphilateliclibrary.com

## APPLICATION FOR MEMBERSHIP

++ Please Print All Information Clearly ++

Name: \_\_\_\_\_  
Last First MI

Address: \_\_\_\_\_  
Street Apartment

City: \_\_\_\_\_ State: \_\_\_\_\_ Zip: \_\_\_\_\_

Phone No: ( ) \_\_\_\_\_

E-mail: \_\_\_\_\_

I am a member of the following national philatelic organizations:

(Please provide membership numbers if you know them.)

American Philatelic Society \_\_\_\_\_ American Topical Association \_\_\_\_\_

Other organizations: \_\_\_\_\_

My collecting interests are: \_\_\_\_\_

### MEMBERSHIP LEVEL REQUESTED:

NOTE: Checkout privileges begin at the Contributing Membership level, or \$25 per year.

REGULAR MEMBER	[ ]	\$ 15.00 / YEAR
CONTRIBUTING MEMBER	[ ]	\$ 25.00 / YEAR
SUSTAINING MEMBER	[ ]	\$ 50.00 / YEAR
PATRON MEMBER	[ ]	\$100.00 / YEAR
SELECT MEMBER	[ ]	\$250.00 / YEAR
BENEFACTOR MEMBER	[ ]	\$500.00 / YEAR

Payment Method:

Cash: \_\_\_\_\_

Check: \_\_\_\_\_

# \_\_\_\_\_

Signature: \_\_\_\_\_ Date: \_\_\_\_\_

Approved by: \_\_\_\_\_ Date: \_\_\_\_\_

The RMPL is an IRS 501(c)3 tax exempt organization.

## ...What's Happening at the RMPL...

"Come and Enjoy the Activities"

Monday 10:00 AM - 4:00 PM

Thursday 2:00 PM - 8:00 PM

Tuesday 10:00 AM - 4:00 PM

Friday 10:00 AM - 4:00 PM

Closed Sundays and Holidays

Wednesday 10:00 AM - 4:00 PM

Saturday 10:00 AM - 4:00 PM

### NOVEMBER 2006

- November 1 - Meeting - Aurora Stamp Club  
6:30 PM Trading; 7:30 PM Meeting & Program
- November 4 - Meeting - 10:00 AM  
Scandinavian Collectors Club
- November 4 - Meeting - 2:00 PM  
TOPIC - Topical Collectors in Colorado
- November 8 - Meeting - 7:00 PM  
Denver Germany Stamp Club
- November 11 - CLOSED Veterans Day**
- November 16 - Meeting - 6:30 PM  
U.S. Philatelic Classics Society, Denver  
Chapter. Program by Steve Pacetti  
*Carrier Fee System*
- November 16 - Meeting - 7:00 PM  
RMPL Board
- November 18 - Meeting - 10:00 AM  
Metro Denver Young Stamp Collectors Club
- November 18 - Meeting - 10:00 AM  
Post Mark Collectors Club
- November 18 - Meeting - Noon  
Exploration & Discovery Study Group
- November 18 - Meeting - 1:00 PM  
Colorado Postal History Society
- November 23 - CLOSED Thanksgiving Day**
- November 25 - Workshop - 10:00 AM  
RMSS/RMPL Exhibiting Workshop  
(Please call for reservations.)
- November 25 - Meeting - 2:00 PM  
China Stamp Society
- November 28 - Meeting - 7:30 PM  
Rocky Mountain Stamp Show Committee



### DECEMBER 2006

#### December Changes

The **Aurora, Denver Germany** and **TOPIC** stamp clubs will hold holiday parties away from the library.

If you plan to attend the **Mexico/Latin America Study Group, Rocky Mountain Aerophilatelists** or **Universal Ship Cancellation Society** meetings on December 9, please bring a pot luck item and a philatelic gift. There will be lunch at noon and a gift exchange for all three clubs.

- December 2 - Meeting - 10:00 AM  
Scandinavian Collectors Club
- December 9 - 9:00 AM  
**Second Saturday at the RMPL**  
Program by John Bloor  
*"Delandre's World War I Military Poster Stamps"*
- December 9 - Meeting - 10:00 AM  
Mexico/Latin America Study Group
- December 9 - Meeting - 11:30 AM  
Rocky Mountain Aerophilatelists
- December 9 - Meeting - 2:00 PM  
Universal Ship Cancellation Society  
U.S.S. Colorado Chapter
- December 16 - Meeting - 10:00 AM  
Metro Denver Young Stamp Collectors Club
- December 23 - Exhibit Workshop - 10:00 AM  
(Please call for reservations.)
- December 23 - Meeting - 2:00 PM  
China Study Group
- December 25 - CLOSED Christmas Day**
- December 27 - Meeting - 7:30 PM  
Israel Stamp Club

### ...Show Schedule...

**CHERPEX 2007** -- January 27 & 28. Malley Recreation Center, 3380 So. Lincoln, Englewood. USPS, 25 dealers. Exhibits solicited. Contact Sergio Lugo (303) 691-0393.

**ROMPEX 2007** -- May 18, 19 & 20. Holiday Inn DIA, I-70 & Chambers Rd. Mark your calendar now.

*Scribblings* is published bimonthly by the Rocky Mountain Philatelic Library, 2038 S Pontiac Way, Denver, CO 80224. The Rocky Mountain Philatelic Library is a chartered Colorado nonprofit corporation. Membership subscriptions over that for the regular membership, and donations of appropriate philatelic materials, are deductible for U.S. income tax purposes. The RMPL is an Internal Revenue designated 501 (c)(3) charitable organization.

#### RMPL Board of Directors

President and *Scribblings* Editor: Ron Mitchell - Operations Manager: Don Beuthel - Vice-President: Jim Kilbane

Corresponding Secretary: Robert Brown - Recording Secretary: Maury Pautz - Treasurer: Bob Blatherwick

At Large: Tim Bartshe - Sergio Lugo - Steve Schweighofer - Dalene Thomas - Emeritus: James L. Ozment and John H. Willard