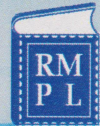


# Scribblings

...from the Rocky Mountain Philatelic Library



Ellengail Beuthel, Librarian...

Vol. 14 - No. 1

2038 S. Pontiac Way, Denver, CO 80224

January - February 2006

www.RockyMountainPhilatelicLibrary.com

303.759.9921

E-mail - rmpl@qwest.net



## In this Issue...

Donations..... p.4

RMSS Needs

Volunteers..... p.5

Board Meeting

Schedule..... p.5

If It's Snowing.. . p.5

New Members..... p.5

Collections

for Sale.....p.6

Election Bios..... p.8

Additions to the

Shelves.....p. 10

## Second Saturday at the RMPL...

Jan. 14

"Le Tour de France"  
(Antarctica) Bob Brown

Feb. 11

"Scouting Stamps and  
Postal History"  
Frank Leitz

## NOTICE

### RMPL ELECTIONS Ballot enclosed

See pages 8 and 9  
for candidate  
biographies and  
voting instructions.

Please support the  
library by casting your  
ballot.

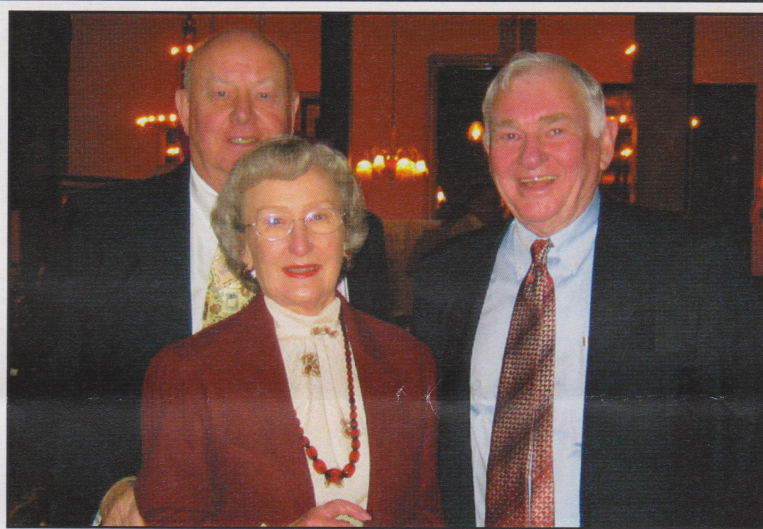
*A gathering place...*

## RMPL CONTINUES HEALTHY GROWTH

*by Ron Mitchell, President*

Our 2006 report on the "State of the Library" focuses on observations of the gentleman on the right in the accompanying picture.

He is **Bob Lamb**, the Executive Director of the American Philatelic Society for the past eleven years. Bob visited the RMPL last November when the Collector's Club of Denver had its banquet celebrating its 100th anniversary.



*RMPL founders Don Beuthel and Ellengail Beuthel with American Philatelic Society Executive Director Bob Lamb during his recent visit to attend the Denver Stamp Club's 100th Anniversary celebration.*

Bob was impressed with the RMPL and he specifically mentioned three areas that make it stand out. I will elaborate on each one.

**1) The library is much more than a place with philatelic literature in that it hosts more than a dozen clubs and organizations every month.**

It is a bonus that the library has enough room for meeting space, and our doors are always open for philatelic gatherings. As new groups such as a local chapter of the U.S. Philatelic Classics Society form, it is logical that they choose the library as a place to meet. We are also pleased to provide a temporary place for groups such as the Israel Stamp Club, which occasionally cannot meet at their regular time in a local temple.

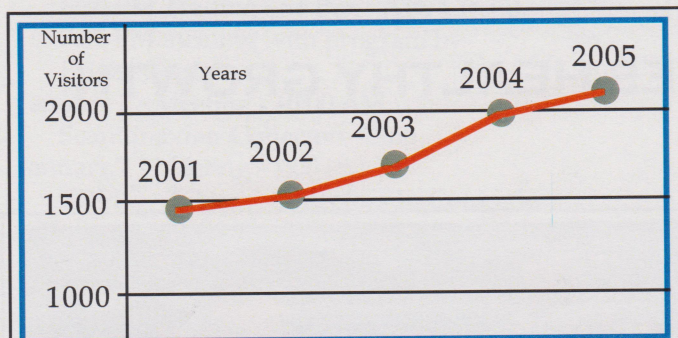
We are pleased to be able to provide a room for the national library of the Scandinavian Collector's Club. Bob Lamb specifically mentioned that the SCC members have managed to make excellent use of space with shelving covering all but a very small part of their area. It is worth a trip to the library just to see what they have managed to achieve with the space in their room.

# RMPL

*Continued on page 2*

The RMPL is used as a place where friends meet to enjoy conversation, use the literature resources available, or look at our stock of stamps and covers. The days when we only had a visitor or two a day are long gone. Some recent weekdays have been as busy as Saturdays.

We estimate that only about two-thirds of our visitors put their signatures in the sign in



The number of patrons and members who signed the visitor log, shown in the left column, is growing steadily each year. The 2005 total does not include the month of December.

book at the front desk when they arrive, but just taking the raw numbers of actual names in the book, we see a steady growth, as shown in the chart above.

Another gauge of an increase in library use is the number of phone calls that are fielded by volunteers. We don't keep track of each call, but there has definitely been a significant increase in the number of questions we answer over the phone during the past few years. More and more people are coming into the library after being told over the phone that we are glad to help them use catalogs to research the value of a collection.

### 2) The RMPL is taking on important projects which will pay big dividends.

This category includes the work of the publications committee, which has one book about ready to publish and several others in stages of development. Our stature as a nationally known library will grow significantly if we can consistently help produce interesting philatelic literature.

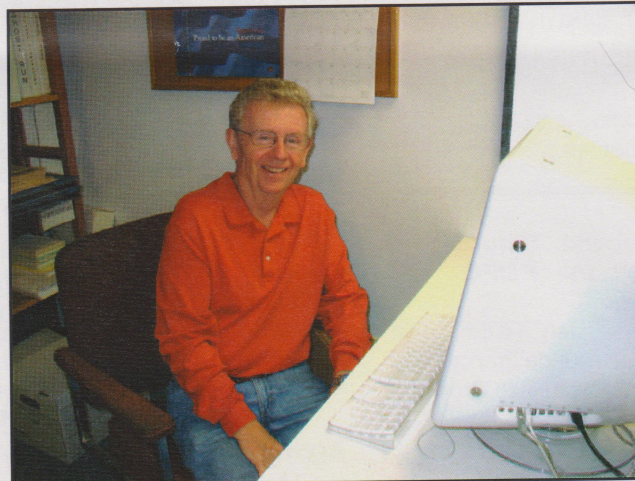
Another major project is the creation of a database of auction catalog's contents. Auction catalogs are full of important information; many of them are literally textbooks on specific

philatelic subjects. **Ron Hill** is working on the database, and it will take several more years to complete. To our knowledge no other library is attempting to do this, and when it is finished it will bring a new dimension for researchers to find information about important stamps and postal history.

### 3) The RMPL has as solid a group of volunteers as exists at any philatelic library in the United States.

A core group of twenty pull three hour shifts each week to keep the doors open six hours a day, six days a week. Several of them do more than one shift. **Don and Ellengail Beuthel** recently held a series of meetings with them to go over our procedures, so everyone is up to speed on how to help our patrons.

It is a fact that not all of our volunteers are as computer literate as others when it comes to looking up material in the database, but they are all ready to give it a try. If you need help, all you have to do is ask. Our members and patrons are the number one reason we are here.



Membership Chairman Roger Rydberg in his familiar place behind a desk with a Mac on it.

There are many other volunteer jobs besides the most visible ones of the on duty personnel. I'll try to mention most of them, in no particular order:

--**Roger Rydberg** keeps our membership records, is the web master for our internet site, and helps with the technical and layout side of putting out *Scribblings*.

Continued on page 3

--Treasurer **Bob Blatherwick** spends hours paying the bills and keeping our finances in order.

--**Steve Schweighofer** makes sure everything in the building works by serving as the library's master handyman. For example, one of his big job was the complete remodel on the back room so we could install rolling shelves.

--**Chuck Baker** is indispensable as our computer "guru" and has saved us thousands of dollars by troubleshooting our computer troubles.

--**George Snyder** sometimes drops everything to come in on a moment's notice to mind the store when another volunteer can't make it.

--**Dalene Thomas** is our historian and has also indexed Jack Willard's Colorado post card collection and our many programs available for clubs.

--**Peter Adgie** has started a youth club and represents the library at youth tables at many of the local shows.

--Corresponding Secretary **Bob Brown** acknowledges every donation with a formal letter suitable for an IRS deduction. He also nurtures the growth of our map collection.

--**Dave Capra** helps out in many ways during his Saturday afternoon shift, including the hard work it takes to keep our two sheds organized.

--**Norm Camara** carefully lots every item for the annual silent auction at the Rocky Mountain Stamp Show. This is a year 'round job.

--**Nick Bede** puts the stamps on the envelopes used to mail out *Scribblings*.

--**George Wright** takes care of getting new acquisitions ready for the shelves by putting on labels and stamping them as property of the RMPL. He also prepares the check-out cards and puts books and monographs made up of loose pages in various kinds of binders.

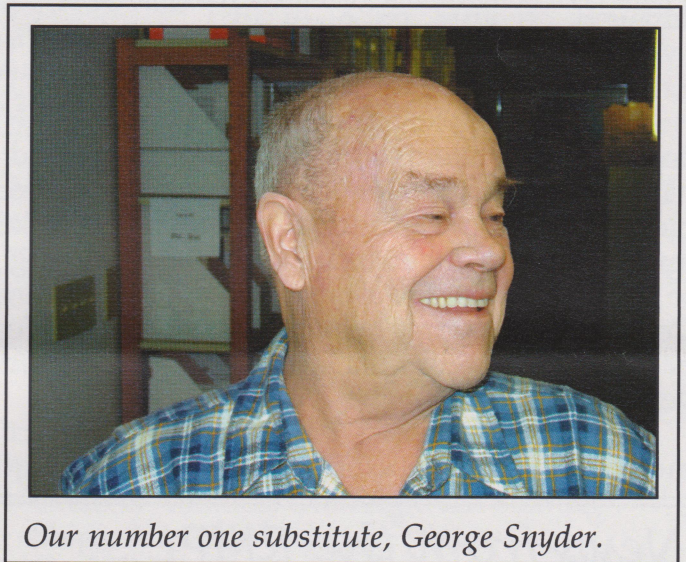
--**Jim Mooreman** assigns categories to clippings from magazines and newspapers and then files them. If you're looking for information about U.S. Boating Revenues and can't find anything in the stacks, the vertical file is the place to go. It often will contain information not found elsewhere.

--**Don Dhonau, Maury Pautz, Paul Albright and Gene McGurer** vacuum the carpet (about

3,300 square feet of it), gather the trash and take it home (trash service is too expensive), clean the bathrooms (another thankless job) and dust the shelves (about a half-mile of shelving.).

--**Mark and Felice Vainer** are assisting in a reorganization and inventory of periodicals. We have come to the point where we can no longer keep two copies of each issue on the shelves because we need the space for an expanding collection. Second copies are going into storage in the sheds on the west side of the building.

--**Sergio Lugo** spends as much time at the library as anyone. His main job is to oversee the breakdown of incoming stamp collections to prepare the material for sale, but he is also chairman of the publication and acquisition committees and is in charge of incoming

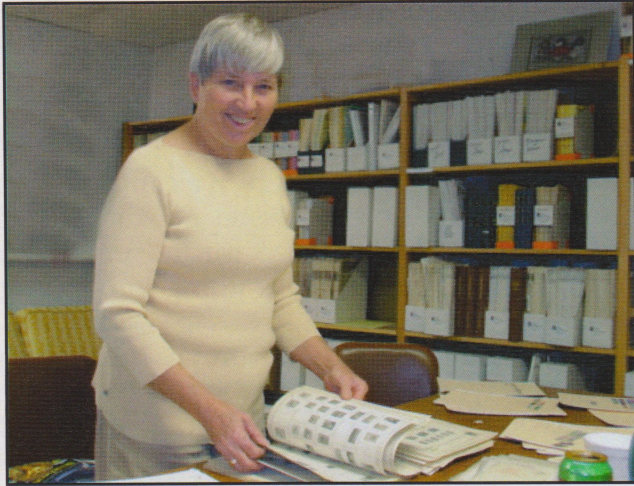


*Our number one substitute, George Snyder.*

periodicals, with help from **Sue Dunn**.

--The sales department now takes up most of the shelves on the east wall. There are 72 Nickel Books in large binders. Stamps for sale in the Priced as Marked Books have recently been rearranged and are in country and Scott number order. The section with covers for sale has at least doubled in the past year. Besides **Sergio Lugo**, it takes 20 volunteers to keep all of this in order. They are: **Peter Adgie, Mike Anderson, Dave Capra, Eric Carlson, Norm Camara, Bob Easterly, Jim Fredlund, Frank Leitz, Don Lovelace, Gene McGurer, Dasa Metzler, Mary Ellen Markel, Phil Purcell, Clarence Rybowiak, Roger Rydberg, Glenn Shaw, Tom Surprenant, Dalene Thomas, David Weisberg and Gerard Zschoche.**

*Continued on page 4*



*Dasa Metzler organizes topical stamps which have been donated and gets them ready for sale.*

## THE FUTURE

While RMPL membership is strong, the board feels we have so much to offer we should have many more members. To that end, we plan to have a recruitment drive that entails inviting into membership all those who belong to the American Philatelic Society who live in Colorado but do not belong to the library. We had such a drive several years ago and it was very successful.

Additionally, we would like to attract members from across the country who may

view our efforts as worthy of support. We have a new membership recruitment committee chaired by Tim Bartshe which will formulate a plan. Expanding the membership will be a topic of discussion at the next board meeting at 7:00 PM on January 19th. Please join us if you have ideas for recruiting new members.

At that same board meeting, we will continue an ongoing discussion of how to maximize return on our investments. Two immediate goals include establishing a fund which will eventually pay the salary for a paid part time librarian, and establishing an expansion, or building, fund. You will be hearing much more about that within the next year.

Another plan for 2006 is to put our catalog on the internet so members who live a distance from the library and belong at the \$25 a year level may check out materials.

During his visit, Bob Lamb indicated the APS may be able to help with such a project. This cooperation with the APS would be very welcome and is something we will continue to explore.

We appreciate Bob's visit, and his encouragement of our efforts.

And we salute all of our volunteers who continue to make the RMPL a wonderful place and a useful resource for the philatelic community, year after year.

## News from the RMPL ...

### DONATIONS RECEIVED

TOPIC (TOPical Philatelists In Colorado) members have donated a total of \$155 in memory of Mary Ann Owens in recognition of her enormous contributions to topical philately. She passed away in late November.

Memorial donations automatically go into the library's book acquisition fund, and as with all donations, they are appreciated very much.

Total cash contributions to the RMPL through November, 2005 totaled \$14,300. As we look to the future and the need for expansion and, eventually, a salary for a part-time librarian, these funds are very important. The board takes the stewardship of its finances very seriously.

We thank the following members and friends who donated philatelic materials or cash

during October and November:

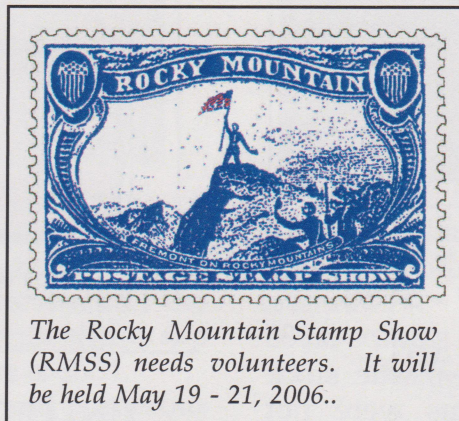
Paul Albright, Randy Alexander, American Philatelic Research Library, Herman Axelrod, Carl Barna, Jan Marie Belle, Jeffrey D. Beller, Don Beuthel, Bob Brown, Norm Camara, Fred Campbell, Roger Cichorz, Bill Cox, Thomas Crawford, JoAnne Curran, James Debros, Warner Donnay, Mrs. William Echelmeyer, Ray Glidewell, Peter Goodyear, Max Hickox, Ron Hill, Michael Horsley, Elmer Hunter, and Fred Huyskins.

Also Phillip Kearney, Jim Lays, Sergio Lugo, Glenn F. Mallory, Mike Massilli, Robert J. Mather, Dasa Metzler, Jim Mooreman, Steve Nadler, Jim Peterson, Tom Pollard, J. Reichman, Norm Ritchie, Carol P. Roy, Roger Rydberg, Scandinavian Collectors Club, Bill Schaefer, William Schulz, Morgan Sonsthagen, Duane Spidle, Tom Ten Eyck, Mark Vainer, Jack Van Ens, Julie VerHagen and David Weisberg.

## WORKERS NEEDED FOR RMSS

by John H. Bloor, RMSS Volunteers Chairman

As happens in Denver every spring, the Rocky Mountain Stamp Show is scheduled for the weekend of May 19-21, 2006, at the John Q. Hammons Trade Center at I-70 and Chambers Road in Aurora, Colo. This year is a bit unusual in that there is a great "sucking sound" emanating from Washington, D.C. This is not the result of hot air rising from our elected representatives (That's no different than other years.) but, rather, from Washington 2006, the international show scheduled to begin on the weekend following RMSS. Although it appeared at first that the attraction of D.C. would leave only local societies to support RMSS (not necessarily a bad thing), the American Air Mail Society has volunteered to attend as one of the featured societies. We expect that this will attract dealers and exhibitors to our fair city, again making RMSS as successful as it has been in past



years, albeit somewhat smaller than usual.

One thing hasn't changed, though. RMSS 2006 needs volunteers to set up and take down the exhibits and to staff the admissions, cachet sales, and youth tables during the three days of the show. To all of you who have helped in past years, we again say, "Thank you." You will be sent a postcard early in 2006 asking you to help again this year if you will be in the Denver area. If you've never volunteered for RMSS, we always need new faces to help with the exhibits and to work the two hour blocks from 10 to 6 on Friday and Saturday and 10 to 3 on Sunday. Benefits include free entry to the show, free show cachets, the opportunity to meet other collectors, and to support philately. If you can help, please contact John H. Bloor through the RMPL or directly by calling (720) 529-5942. We look forward to meeting you.

## RMPL BOARD MEETINGS

The library's annual "official" board meeting to satisfy the requirements of a non profit corporation under Colorado law will be held at the library on Thursday, January 19th at 7:00 PM. Our members are always welcome at board meetings. They are held on the third Thursday of every other month; January, March, May, July, September, and November.

## NEW MEMBERS

We are pleased to report that the following people have joined the library in the past two months:

William Gum - Denver, CO

Collects U.S., BOB, Worldwide

Jill Lowy - Bailey, CO

Howard F. Benson - Aurora, CO

Collects Non-communist East Europe, Dead Countries

M.W. (Warner) Dounay - Aurora, CO

Collects United States - Mint and Used

Steve McGill - Highlands Ranch, CO

Collects Great Britain, Commonwealth, Canada, U.S., Antarctica

Attilio Catanzano - Boulder, CO

Collects U.S., Italy, Germany, 1840-1940

World Classics, Topicals

Jim Moravec - Arvada, CO

Collects Airships, Old Engraved Stamps, Ships, Air, Old World

William Shaffstall - Centennial, CO

Eric Lederer - Denver, CO

Collects United States, 1941 and earlier

Walter Nieuwlandt - Longmont, CO (Youth)

Collects U.S., Canada, South Africa, Worldwide

Peter Nieuwlandt - Longmont, CO (Youth)

Collects U.S., Insects, Australia, Worldwide

Bill Rhodes - Franktown, CO

Collects U.S. Classics

## IF IT'S SNOWING...

A reminder that for the safety of our volunteers and patrons, if there is a snowfall of three inches or more, or if a major storm is predicted, the library may be closed. Please call ahead to make sure the building is open.

## COLLECTIONS FOR SALE

The RMPL has been given several collections recently, and they are being offered to the membership intact at set prices. They are available for inspection at the library during regular hours.

431-434, 495- 503, 950-955, 1075-1079, 1084, 1314-1319, 1762- 1786, C1-C5, and MR1.

**THE NEW ZEALAND COLLECTIONS  
ARE OFFERED TOGETHER FOR  
\$1,450.**



*New Zealand 52, 65, 68, 79*

### NEW ZEALAND USED - \$650

Approximately 2,000-2,500 used stamps on 35 double sided, black see through plastic stock sheets. Approximately 100 items were not counted in the valuation. The donor, who was a life long New Zealand collector, gave an appraisal of \$1875. Stamps are on the pages in Scott number order. There is little duplication. Most stamps are in very good condition. Better stamps include: 52, 65, 66, 68, 79, 87, 135, 165-170, 179-181, 189, 192, 197, 198, 191-201, 300, 301, B1, B3-B7, C1-C8, and O90.



*New Zealand 137 - 139*



### UNITED STATES, PART ONE \$600

### NEW ZEALAND UNUSED \$900



*New Zealand 124, 125*



*666 - 668 and 677 - 679, from full sets of the Kansas-Nebraska series, from Part 1 of the U.S. collection.*

Approximately 2000 unused on 35 double sided, black see through plastic stock sheets. The donor appraised this collection at \$3,000. We counted \$2,600 Scott value, and did not include several hundred sets and singles. The stamps are on the pages in Scott number order. There is little duplication. Most stamps are in excellent condition. Better stamps observed include: 122-125, 130-139, 165-170, 179-181, 185-201, 229-241, 258-268, 288-301, 348-352, 400-404,

Donor collected mint, mostly unhinged beginning with 1930, in a Scott National Album with a slip cover. Virtually all mint stamps after 1932 through 1992. Used prior to 1932 are not counted in the valuation. Catalogue value is \$1,600. Face value is \$404.

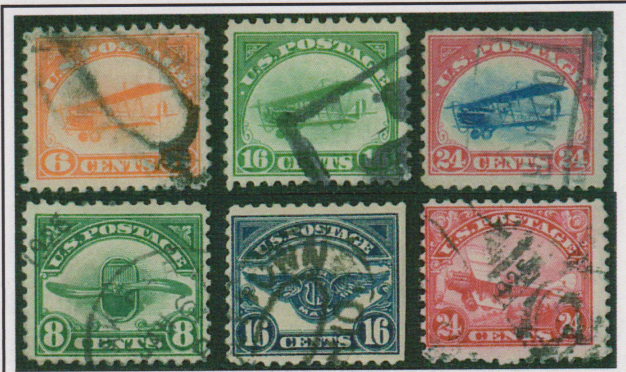
A few of the better used items: 26, 114, 288, 330, 399, 550, 573, 658-679, 834, 1052, 1052A.

Unused: 371, 548-49, 614-19, 620-21, 656, 704-15, 730, 731, 740-49, 750, 751, 803-32, 839-51, 857-93, 1278-95, 1633-82, 1686-90, 1612, and 2196.

*Continued on page 7*

## UNITED STATES, PART TWO

\$700



C1 - C6, from Part 2 of the U.S. collection.

There are unused stamps, mostly unhinged, from 1993 through 2001, plus the back-of-the-book. It is in a Scott National Album with a slip cover. Catalog value is \$1,300, face is \$634.

Better items include 2875, 2975 and numerous 15 and 25 stamp panes. Airmails are complete



C31 unused and C18 MNH with some toning, from Part 2 of the U.S. collection.

except for the three Zeppelins. C1-C6 are used, but all the others, including the Transports, are unused.

**THE U.S. COLLECTIONS ARE OFFERED TOGETHER FOR \$1,200.**

## SECOND SATURDAY PROGRAMS - THE ANTARCTIC AND SCOUTING

Second Saturday programs begin promptly at 9:00 AM and are over by 10:00 AM. Donuts and coffee are complimentary. It's always a good time, so bring a friend!

### JANUARY 14

Bob Brown will take us on Le Tour de France, a tour of some of the French Colonies in the Southern Hemisphere, y'all. During the course of research, Bob acquired a few stamps from the French and Antarctic Territories and was impressed with their quality, so he began looking into it a little further. We'll see the results.



*Ships of explorers of the French Southern and Antarctic Territories.*

### FEBRUARY 11



*Registered cover from the Fourth World Scout Jamboree held in Gödöllő, Hungary in 1933. The cover is franked with the first set of stamps ever issued for a Jamboree.*

February is Scouting Month. In celebration of this Frank Leitz, Scouter and stamp collector, will discuss the intersection of his two interests. The basis of Scouting, the development of citizenship, character and fitness are ideally reflected in a wide range of philatelic items. If you have good Scouting items, philatelic or not, please bring them for display after the powerpoint presentation.

## RMPL ELECTIONS

A ballot is included in this issue so you may participate in the election of members of the Board. The current three year term for all RMPL Board members and officers expires on March 1, 2006. All incumbents have chosen to stand for reelection and two members are running for the four at large positions. Six candidates, then, are running for the four at large seats on the Board. They have submitted short biographies to help you make your choices.

Candidates for the officers are running unchallenged, but there are spaces on the ballot for write-ins.

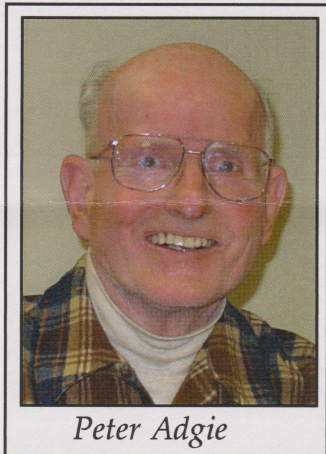
There is a box for you to deposit your ballot at the library, or you may mail it to:

Election  
RMPL  
2038 So. Pontiac Way  
Denver, CO 80224

Ballots must be received by the end of the day Tuesday, January 31, 2006. A committee of three members will then count the results and the elected board will take office on March 1.

Please take advantage of this opportunity to vote in the library's elections.

### PETER ADGIE



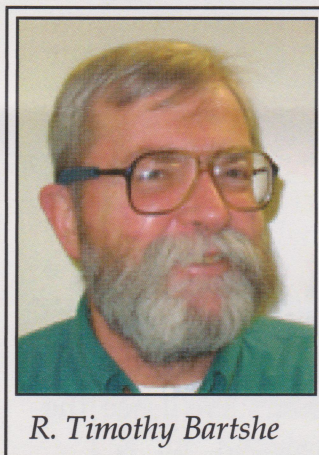
*Peter Adgie*

My interest in continuing my RMPL activities by serving on the Board is based on my 63 years of joy in philately, and my desire to add my thoughts and opinions to a very superior and established group of officers. I have lived and collected stamps in six different countries and four of our states. My collection is eclectic and full of fun and pleasure for me. As a two-day volunteer and organizer of the Youth Club for metro Denver, and having served or serving as president of two local clubs, member of a third, and on the Rocky Mountain Stamp Show Committee, I am very much aware of the philatelic atmosphere, needs, and most of all the potential of the library. I realize that all current Board members wish to remain, so it depends on the general membership whether a new voice should be heard.

### R. TIMOTHY (TIM) BARTSHE

Tim has served on the Board the past two years as an appointee to the vacancy created by Bill Dunn's passing. He is 57, and has been

active in local organized philately for the last 10 years. He has served as president of the Collectors Club of Denver and the ROMPEX committee. As an accredited APS judge and active exhibitor, Tim has utilized the resources of the RMPL extensively and been proud to be a small part of it. The future of the RMPL lies in the hands of a forward-thinking, innovative and resourceful Board. If elected he will work to help create and strengthen the goals for expanding and improving services that this institution has been so admirably developing. It is also his goal to help guarantee its financial future and to ensure it is here to serve new philatelic generations.



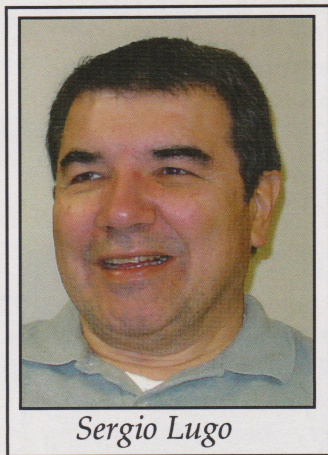
*R. Timothy Bartshe*

### SERGIO LUGO

Retired, age 59. Stamp collector since childhood, with interests in worldwide stamps, dead country stamps, postal history of the Brazilian airline Syndicator Condor, Puerto Rico, and the social welfare agencies that worked with the American military in World War I. Member of local clubs (Aurora, Cherrelyn, Denver,

*Continued on page 9*





Sergio Lugo

Germany, Mexico/Latin America Study Group, Aero group) and APS, AAMS. He is the author of several articles for *The American Philatelist*, and an article for the Center for Coast Guard History. Sergio has also written two books to date on the First World War. He is a charter member of the RMPL and a volunteer

at the library since its inception.

### JAMES L. OZMENT

As a founder and board member of the library since the beginning in 1993, I have always tried to vote on the issues in a manner consistent with good business judgment and fiscal responsibility.

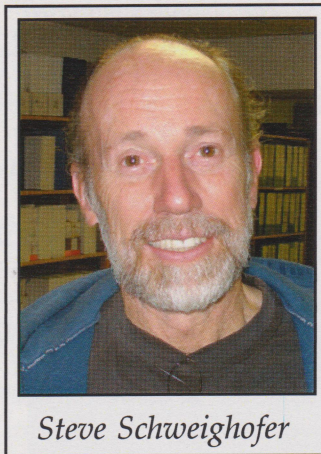
My philatelic resumé includes more than 30 years as an accredited APS judge, member of the Collectors Club of Denver, president of the West Side Stamp Club, a member of the ROMPEX committee since 1984. I also have served on the board of the Colorado Railroad Museum for many years. My vision for the library is that it should

undergo controlled growth, again being fiscally responsible. In the upcoming days we will deal with expansion issues, whether to expand the current facility or find a new location. My engineering background gives me a strong ability to help analyze the physical, logistical, and fiscal problems that continually arise.

### STEVE SCHWEIGHOFER

Steve has been a volunteer at the library since the beginning in 1993, and has been proud to serve on the Board the last three years, serving on several committees and chairing the By-Laws Revision Committee. He is the in-

house handyman and remodeling expert. He was the "go-to" guy during construction on the inside of the library building after it was purchased in 1995. Steve has organized the various USPS and Austria related materials and the Donald Byrum cinderella literature in the library. He is showing his leadership abilities as the current President of the Rocky Mountain Stamp Show, or ROMPEX, organizing committee. He served as the



Steve Schweighofer

Secretary of ROMPEX for more than 15 years. Steve has been a member of the Aurora, Cherrilyn, Denver Germany and Denver Stamp Clubs. Nationally, he is a member of two Austria collector clubs and the American Philatelic Society.

### DALENE THOMAS

A member of the library since 1993 and a volunteer since 1996, Dalene has indexed two important library collections, bound all the exhibits received, and helped price donated items for sale. She serves as library historian and created the library memory book. She is the immediate past president of the American Topical Association and writes two regular columns for *Topical Time*. She received the Distinguished Topical



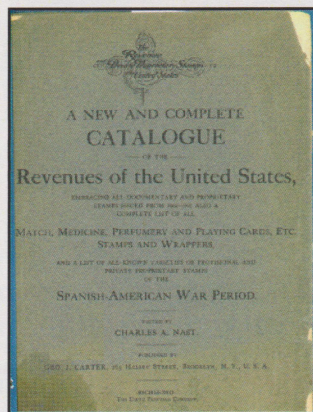
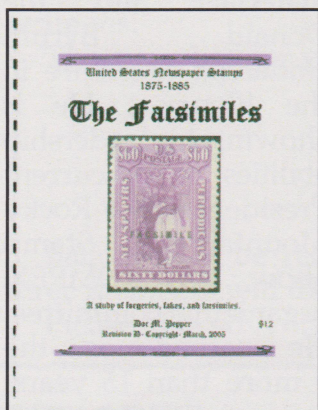
Dalene Thomas

Philatelist of the Year award in 2001. She is also a member of the APS, AAPE, UPSS, AFDCS and ISWSC ACE. She founded the Lighthouse Stamp Society and has served as its president and journal editor for 14 years. Dalene is secretary of Collectors Club of Denver and a past member of the ROMPEX committee. She exhibits routinely at local and national shows. Dalene is a Colorado native and attended Colorado State University.

# ADDITIONS TO THE RMPL SHELVES

## UNITED STATES

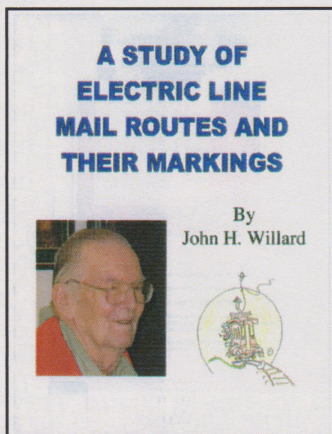
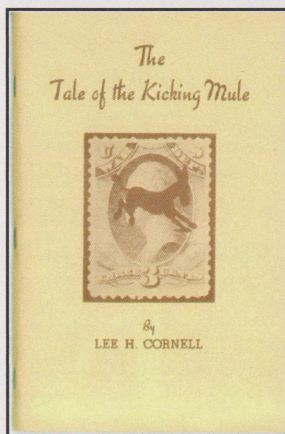
*The A, B, C's of the U S P S: The Nondenominated Alphabet Stamps of the U.S.*, an exhibit by Donald G. Beuthel, 2005.



*Directory of Railway Post Offices*, revised ed. by John L. Kay, 1997.

*Exhibition Stamps*, compiled by Sergio Lugo and Maury Pautz, based on contributions from Dasa Metzler, 2005.

*Facsimiles: A Study of Forgeries, Fakes, and Facsimiles*, by Doc M. Pepper, 2005.



*General Catalog of Postmarks of the United States*, revised by Henry M. Konwiser, 1946.

*Linn's U.S. Stamp Yearbook 2002, 2003, 2004*. The library has all of the yearbooks, 1983 to 2004.

*The Official Blackbook Price Guide of United States Postage Stamps* by Marc Hudgeons, pub. by House of Collectibles. Library has 1981, 1988, 1991, 1994, 1997, 2003.

*A New and Complete Catalogue of the Revenues of the*

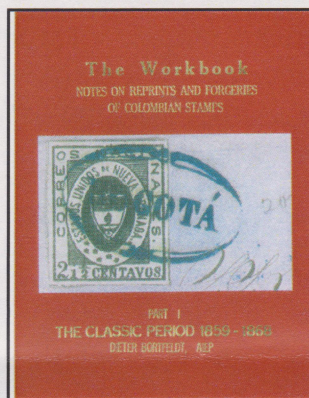
*United States* edited by Charles A. Nast, [1903?]  
*Pre-U.P.U. rates Between the United States and Germany*, an exhibit by Dwayne O. Littauer, 1988.  
*United States Newspaper Stamps 1875-1885: The U.S. Treaty Mails, 1845-UPU/GPU*, an exhibit by Susan M. McDonald, 1988.  
*The Tale of the Kicking Mule* by Lee. H. Cornell, 1949.

## CENTRAL AND SOUTH AMERICA

*Ecuador: The Philately of the Seebeck Era, January 1892 to Mid-June 1897, Its Handbook of the SCADTA Provisional Surcharges 1921-1923* edited by Santiago Cruz and Dieter Bortfeldt, 2004.

*Stamps, Proofs, Postal Stationery and Postal History* by Robert A. D'Elia and Douglas B. Armitage, 2005.

*The Panama Canal Story*, an exhibit by Raymond Ireson, 2001.



*The Workbook: Notes on Reprints and Forgeries of Colombian Stamps, Part 1, The Classic Period 1859-1868* by Dieter Bortfeldt, 2004.

## EUROPE

*Bucherverzeichnis: Band 1, Allgemeines, Postgeschichtliches und zus Ammenfassendes, Altdeutschland Deutschland* (A catalog of the philatelic library in Hamburg, Germany), [no date].

*Fezzan-Ghadames: A Modern Philatelic Mystery* (in the French Colonies) by Marvin Taub, 1964.

*Illustrowany Katalog Znaczkow Polskich*, pub. by Agencja Wydawnicza Ruch, 1969.

*Paris Postal Markings, 1863-1876: The Second Star Cancellation Period*, an exhibit by Stanley J. Luft, 1996.

*The Postal History and Postage Stamps of Serbia* by Mirko R. Rasic, 1979.

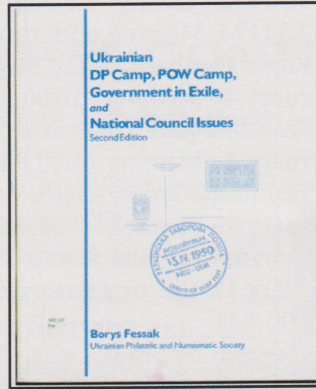
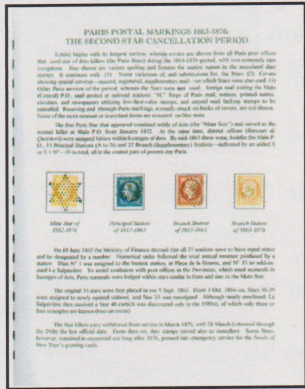
*Ukrainian DP Camp, POW Camp, Government in Exile, and National Council Issues*, 2nd ed., by Borys Fessak, 2003.

## ASIA

*Early Japanese Postmarks and Post Offices* by George A. Fisher, Jr., 1975.

*Forgeries of the Dragon, Cherry Blossom and Koban Postage Stamps of Japan* by Thomas L. Zane, Ron Casey, and Lois M. Evans-DeViolini, 1997.

*A Postal History of the Prisoners of War and Civilian Internees in East Asia During the Second World War* in three volumes:



B. Proud, 2005.

*The United Nations Archives*, an auction by Greg Manning Galleries, November 18-21, 2003.

*Unitrade 2002 Canada Specialized Catalog*.

## TOPICALS

*Project Apollo Space Cover Catalog* by Paul C. Bulver, 2004.

*Study of Suspect Space Covers* by Paul C. Bulver, 2001

## CINDERELLAS

*Bicycles, Germany, the Poster Stamps* by Charles Kiddle, 2001.

*Cars, Including Trucks, Automotive Products, etc., Germany, the Poster Stamps* by Charles Kiddle, 2002.

*The Colorado Non-Stamp* by Stephen R. Datz, 1978.

*Green's Catalog of the Tuberculosis Seals of the World: Part I, U.S. National Christmas Seals* originally compiled by Dick Green [et. al.].

## COLORADO AND THE WEST

*Denver, America's Mile High Center of Enterprise* by

*Volume 1: Singapore & Malaya 1942-1945 - The Changi Connection*, by David Tett, 2002.

*Volume 2: Dutch East Indies 1942-1946 - Paradise Lost* by David Tett, 2003.

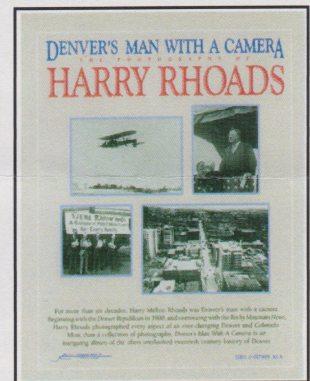
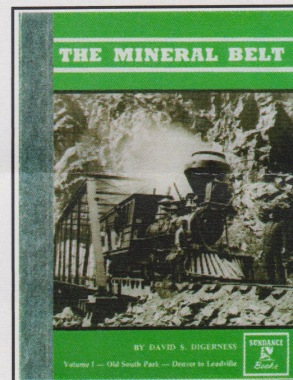
*Volume 3: Burma, Thailand and Indochina 1942-1946 - The Railway, The River and the Bridge* by David Tett, 2005.

## OTHER COUNTRIES AND AREAS

*American Exposition Postcards 1870-1920, A Catalog and Price Guide* by Frederic and Mary Megson, 1992.

*Philatelic Expertising*, edited, compiled and researched by Wolfgang Hellrigl, 2004.

*The Postal History of Ascension, St. Helena and Tristan*

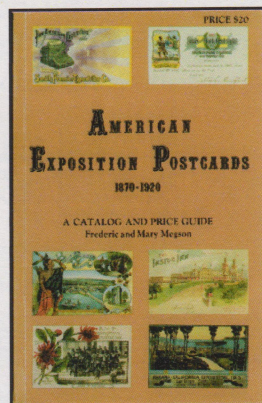
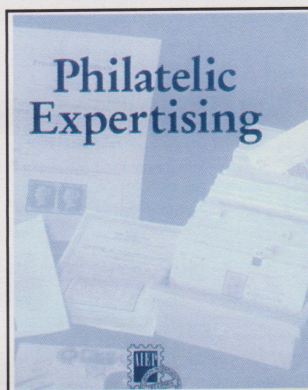


Jerry Richmond, 1983.

*Denver's Man with a Camera: The Photographs of Harry Rhoads* by Morey Engle and Bernard Kelly, 1989.

*The Mineral Belt, Volume 1, Old South Park -- Denver to Leadville* by David S. Digerness, 1977.

*Nebraska Post Offices and Postmasters* by Alton L. Kraft and Russ Czadlewski, 2003.



*da Cunha* by Edward B. Proud, 2005.

*The Postal History of the Leeward Islands* by Edward

## CHERPEx XXXII Stamp Show

January 28 - 29

Lakeside Mall  
5801 W 44th Ave, Denver, CO

## ...What's Happening at the RMPL...

"Come and Enjoy the Activities"

Monday 10:00 AM - 4:00 PM  
Thursday 2:00 PM - 8:00 PM

Tuesday 10:00 AM - 4:00 PM  
Friday 10:00 AM - 4:00 PM  
Closed Sundays and Holidays

Wednesday 10:00 AM - 4:00 PM  
Saturday 10:00 AM - 4:00 PM

### JANUARY 2006

January 4 - Meeting - Aurora Stamp Club  
6:30 PM Trading - 5¢ Box - APS Circuit  
7:30 PM meeting with program by  
Erwin Chaim

January 7 - Meeting - 10:00 AM  
Scandinavian Collectors Club

January 7 - Meeting - 1:00 PM  
TOPIC - TOPical Collectors In Colorado

January 11 - Meeting - 7:00 PM  
Denver Germany Stamp Club

January 14 - Second Saturday at the RMPL  
9:00 AM  
Program by Bob Brown  
"Le Tour de France" (Antarctica)

January 14 - Meeting - 10:00 AM  
Mexico/Latin America Study Group

January 14 - Meeting - 2:00 PM  
Universal Ship Cancellation Society  
U.S.S. Colorado Chapter

January 16 - Martin Luther King Day  
Library Closed

January 19 - Meeting - 7:00 PM  
RMPL Board -- All are welcome

January 21 - Meeting - 10:00 AM  
Metro Denver Young Stamp Collectors Club

January 21 - Meeting - Noon  
Exploration and Discovery Study Group

January 21 - Meeting - 2:00 PM  
Russia Study Group

January 28 - Workshop - 10:00 AM  
Exhibit workshop - please call ahead for  
reservations

January 28 - Meeting - 2:00 PM  
China Study Group

January 31 - Meeting - 7:30 PM  
Rocky Mountain Stamp Show Committee

### FEBRUARY 2006

February 1 - Meeting - Aurora Stamp Club  
6:30 PM Trading - 5¢ Box - APS Circuit  
7:30 PM Meeting with program by  
Roger Rydberg - eBay Buying and Selling

February 4 - Meeting - 10:00 AM  
Scandinavian Collectors Club

February 4 - Meeting - 1:00 PM  
TOPIC - TOPical Collectors In Colorado

February 8 - Meeting - 7:00 PM  
Denver Germany Stamp Club

February 11 - Second Saturday at the RMPL  
9:00 AM  
Program by Frank Leitz - "Boy Scouts  
Stamps and Postal History"

February 11 - Meeting - 10:00 AM  
Mexico/Latin America Study Group

February 11 - Meeting - 11:30 AM  
Rocky Mountain Aerophilatelists

February 11 - Meeting - 2:00 PM  
Universal Ship Cancellation Society  
U.S.S. Colorado Chapter

February 18 - Meeting - 10:00 AM  
Metro Denver Young Stamp Collectors Club

February 18 - Meeting - 2:00 PM  
Russia Study Group

February 20 - President's Day  
Library Closed

February 25 - Workshop - 10:00 AM  
Exhibit workshop - please call ahead for  
reservations

February 25 - Meeting - 2:00 PM  
China Study Group

February 28 - Meeting - 7:30 PM  
Rocky Mountain Stamp Show Committee

## ...Monthly Stamp Show Schedule...

January 28 - 29 - CHERPEX XXXII

Lakeside Mall, 5801 W 44th Av, Denver, CO

Contact: Eric Carlson, 6321 S Harrison Ct., Centennial, CO

*Scribblings* is published bimonthly by the Rocky Mountain Philatelic Library, 2038 S Pontiac Way, Denver, CO 80224. The Rocky Mountain Philatelic Library is a chartered Colorado nonprofit corporation. Membership subscriptions over that for the regular membership, and donations of appropriate philatelic materials, are deductible for U.S. income tax purposes. The RMPL is an Internal Revenue designated 501 (c)(3) charitable organization.

#### RMPL Board of Directors

President and *Scribblings* Editor: Ron Mitchell - Operations Manager: Don Beuthel - Vice-President: Jim Kilbane  
Corresponding Secretary: Robert Brown - Recording Secretary: Maury Pautz - Treasurer: Bob Blatherwick  
Members at Large: Tim Bartshe - Sergio Lugo - James L. Ozment - Steve Schweighofer - John H. Willard (Emeritus)