

# Scribblings

...from the Rocky Mountain Philatelic Library



Vol. 13 - No. 6

2038 S Pontiac Way, Denver, CO 80224

November - December, 2005

www.RockyMountainPhilatelicLibrary.com

303 - 759-9921

E-mail: rmpl@qwest.net

Ellengail Beuthel, Librarian

*A lost cause...*

## COMPETING WITH THE POST OFFICE

by Stephen B. Pacetti, RMPL Member

**B**efore July 1, 1863, when bringing letters to and from the post office and your home was included in the price of a postage stamp, an additional 1¢ fee was charged for carrying a letter to the post office. Another penny was paid in cash for delivery of a letter to your home or business. In several big cities, private businesses competed with the Post Office Department (POD) for local pick up and delivery of the mail. These "local posts" were very successful because they provided faster service, discounted their own stamps when bought in quantity, had more collection boxes conveniently located, and they catered to businesses.

In Philadelphia, D.O. Blood & Co. operated from 1842 to early 1862. Blood's Despatch or Blood's Penny Post, as it was called, was among the last in the big cities to close its doors. It ignored Postmaster General Joseph Holt's order of July 1860 that attempted to end local posts by declaring *all* streets, avenues, lanes, roads, etc. south of 55th Street in New York City to be post roads. It then won in Federal court when Holt sought an injunction against Blood's. This was a landmark decision

in its day because the court interpreted Congress' intent in the Acts of 1845 and 1851 (which gave the PMG authority to establish post "routes" in cities) and held that PMG Holt's administrative order had exceeded his authority. Nonetheless, Blood's local mail business declined during 1861 because the geographical makeup of Philadelphia



Figure 1.

changed (thus limiting Blood's mail delivery area), ownership of the parent company changed, and new lines of business were introduced. On January 11, 1862, Blood's ceased local mail service.

Very few covers remain showing the use of Blood's Penny Post in late 1861. Figure 1 shows a small envelope addressed to Sunbury, PA that was carried to the Philadelphia post office by a Blood's carrier on October 22, 1861. At upper right, you can see the Blood's stamp (Scott No. 15L14) paying the 1¢ carrier fee. Blood's own hand stamp is at the bottom left. The three 1861 1¢ Franklins (No.63), issued in mid August 1861, paid the 3¢ letter rate for carriage to Sunbury. This cover is an example of *both* an early use of the 1861 1¢ and a late use of Blood's carrier stamp.

Figure 2 is an enlargement of the Blood's stamp, and Figure 3 gives a clearer look at their hand stamp.

RMPL

Continued on page 2



Figure 2.

The "Local Stamps" section in the *Scott Specialized Catalog of U.S. Stamps and Covers* has a complete listing of local posts and their stamps and markings.

In discussing the demise of Blood's Penny Post, several philatelic writers have stated, without citation, that the POD went to Congress after losing in Federal court and asked for and received a

law in 1861 declaring all roads in Philadelphia to be post roads. The author can find *no such law during 1860 or 1861*. Indeed, the next major revision of law to address the POD's mail monopoly was not until the Act of June 8, 1872.

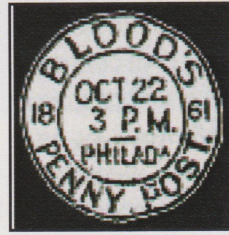


Figure 3.

For more information see: *Blood's Despatch*, Edward T. Harvey, (*The Chronicle of the U.S. Classic Postal Issues*, Vol. 4, No. 4, 11/1989); *The U.S. 1¢ Franklin*, Don L. Evans (Published by Linn's Stamp News, 1997).

## News from the RMPL ...

### OUR CARTOGRAPHIC ARCHIVES ARE EXPANDING

By Bob Brown, RMPL Chief Cartographic Archivist

Our cartographic collection has received an excellent donation of topographic maps from William F. Cox, member and former resident of Bailey, CO, and now living in Aurora. Included in this donation are nearly a hundred quadrangles from back east that were collected by his father. (A quadrangle is a tract of country represented by maps published by the U.S. Geological Survey.)

The donation includes seven special maps, including Mesa Verde and Yosemite National Parks and Niagara Gorge.

There are three new file cabinets in the library's Cartographic Section.

One has our holdings of state road maps which were mostly obtained from gas companies and/or State Highway Departments. Also in this cabinet is our collection of National Forest Maps with some from Colorado that go back to the 1930s.

Another file cabinet holds our collection of National Geographic maps (nearly complete), and some foreign maps as well.

We also have a number of atlases that are useful for research or looking up a location in a given area in order to find a specific place name.

On the shelf at the south end of the Map Room is a file of Pierson Atlases of Denver and surrounding region, Colorado Springs and the Pikes Peak Area.

The same shelf also has a complete set of

"Historic Trail Maps" from the U.S. Geological Survey. These cover the eastern half of Colorado, and two additional maps include a small portion of New Mexico. They show the locations of old trails, stagecoach routes, old railroad lines and abandonments, post offices and settlements.

The collection continues to grow as members and nonmembers alike bring in maps that enhance our collection. Our cartographic archives are an important segment of the library in part because



Bob Brown, RMPL Chief Cartographic Archivist and the library's Corresponding Secretary, records the Map Room's newest acquisitions.

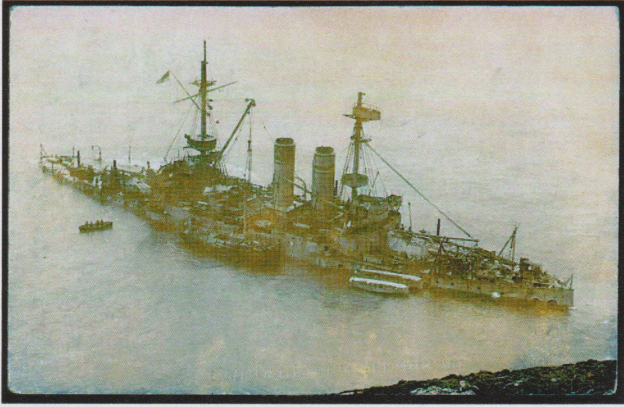
they reveal the locations of new and evolving countries and older countries that are shown on earlier maps. The older maps are especially useful when tracking down some of the early African Colonies that have gained independence under a new name.

I hope you have occasion to venture into our map room soon!

## SECOND SATURDAY AT THE RMPL

**November 12**

"The Wreck of H.M.S. Montagu"



A British Battleship went off course and ran aground at Lundy Island in May 1906. Roger Cichorz will tell this remarkable story with about 80 'real photograph' postcards of that period depicting the Montagu intact and wrecked and in various stages of dismantling and salvage.

**December 10**

"Selected Items of a Specialized Collection of Germany 1923 High Inflation Period"



A cover from August 7, 1923 with a label declaring that 20,000 Marks in postage had been destroyed as payment.

Gene McGurer will show usages of rates in effect for very short periods of time. He says many of the items are found in penny boxes, but are extremely difficult to locate. Gene will also have the entire collection on hand for viewing.

### When, Where, and Donuts Too

Programs start at 9:00 AM sharp at the library. Donuts and coffee are complimentary. Join us!

*Scribbles* - November - December, 2005, p. 3

## CLOSED ALBUM

It is with sadness that we report the death of one of the RMPL's first members and supporters, Bob Rogers.

He passed away on September 27th at age 86 at the VA Nursing Home facility in Denver.

Bob was active in Denver area stamp collecting as a member of the Colorado Postal History Society, Denver Stamp Club, and Collectors Club of Denver. He also served on the Rocky Mountain Stamp Show committee for many years and was a member of the American Philatelic Society.

Bob specialized in Colorado Postal History and Central and South America, with an emphasis on the Canal Zone.

A Colorado (He proudly pronounced it Colo-ra-dah.) native, Bob worked the mines of the central mountains in the late 1930s and could regale listeners of winters spent in those mountains.

An Army combat infantryman of the 77th Infantry Division, Bob was severely wounded in the Okinawa Campaign in 1945, limiting his physical abilities the last sixty years of his life. He was never heard to complain about it.

He shared his knowledge and love of stamps and postal history with all who would listen, and delighted in starting young people in the hobby.

Bob is survived by his wife, Imogene. His graciousness, smile and gentle presence will be deeply missed.

## A TRADITION RETURNS IN BOULDER

After an absence of a couple of years, BOCOPEX 2005 will be held in a new venue, at the Boulder Outlook Hotel and Suites (formerly the Holiday Inn) at the corner of 28th and Baseline.

It will be open Friday, November 11th and Saturday, November 12th from 10:00 AM to 5:00 PM, featuring exhibits and a bourse of ten dealers.

The show is sponsored by the Boulder Stamp Club in cooperation with the Longmont Stampers and other northern metro stamp clubs.

For more information contact the show chairman, John Canady, at [canady2017@msn.com](mailto:canady2017@msn.com) or the exhibits chairman, Sherri Jennings, at [cwlibrary@aol.com](mailto:cwlibrary@aol.com).

## WYPEX 2005 REPORT

The Cheyenne Philatelic Society rolled out the red carpet for collectors the weekend of October 8th and 9th at the Hitching Post Inn in Cheyenne.

The club has a number of hard workers who pitched in to assure a well organized event with eleven dealer tables and two dozen frames of exhibits.

The RMPL had a table to promote the library and sell a few stamps from our donated stock of philatelic material. Also, we picked up two new members and a renewal, so we apparently presented the library in its best light.



Part of a page from the first place exhibit award at WYPEX 2005 which went to Duane Tozier for Bureau Precancels: Defense and War. The exhibit shows all 411 stamps, including cities and types.

We salute our neighbors in Wyoming for putting on a fine show and urge collectors to make a mental note to consider a trip north next October. WYPEX folks are among the friendliest and most knowledgeable collectors in the country!

## SNOW TIME...

For the safety of our volunteers and patrons, the RMPL occasionally closes if there is a snowfall of three or more inches, or if a major storm is predicted.

In such cases, please call ahead to make sure the library is open.

## WELCOME NEW MEMBERS

The following new members joined the library during August and September:

John Herzog - Aurora, CO - Collects U.S., Space

Jeanne Hicks - Cheyenne, WY - Collects U.S.

David Hoffman - Denver, CO - Collects worldwide, precancels

Duane Tozier - Cheyenne, WY - Collects WWII, U.S. to 2000

Robert Sims - Aurora, CO

## DONATIONS

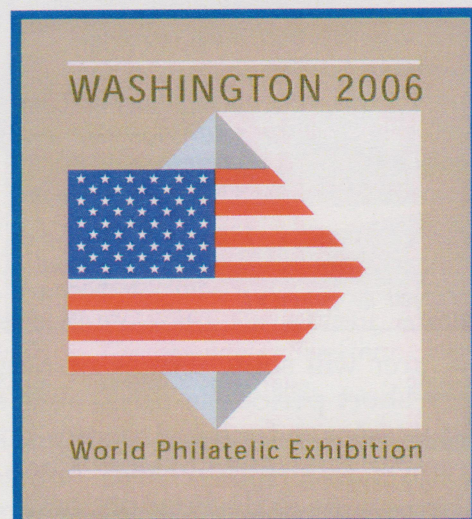
Every donation is important and deserves special mention, but we are compelled to single out one person for going above and beyond the call to bring material to the library.

He is Jay Tebo of Las Cruces, New Mexico. Jay drove the 660 miles from his house to the library to donate 48 record boxes full of philatelic items. He had no other business in Denver; he drove all that way just to make the donation. He had car trouble on the way back, but as far as we know, he didn't complain once! Jay, all RMPL members thank you.

We also thank the following who made donations during August and September:

Roy Allenbach, Herman Axelrod, Nick Bede, Jan Marie Belle, Don Beuthel, Dan Brickley, Bob Brown, Norm Camara, Charles P. Carlson, William F. Cox, Tom Crawford, Warner Dornay, Pat Dowling, Nolan Flowers, Jeffery E. Fossum, Gary and Holly Gibson, Ray Gildewell, Judy Hansen, David Heflin, Colin James, Barbara Kean, and George E. Killian.

Also, Charles J. LaBlonde, Peter Laux, Mrs. Janet Leberer, Frank Leitz, Harold G. Lord, Stan Luft, Cliff Lushbough, Jason H. Manchester, Frederick Mayer, Charles McClure, Gene McGurer, Dasa Metzler, Deborah O'Conner, Dorothy Phillips, Richard Pumphrey, Robley Rhine, Roger Rydberg, James Saver, Scandinavian Collectors Club, Roger G. Schnell, Adolf W. Schwartz, M.D., Jim Sherwin, Society for Costa Rica Collectors, Colin W. Spong, Webster Stickney, Andy Wacinski, Jack Willard, Robert C. Wolf, and George Wright.



**May 27 to June 3, 2006**

For the latest about Washington 2006 and to register in advance for the show or for a hotel, check out the web site:

[www.washington-2006.org](http://www.washington-2006.org)

## EXPLORERS AND EXPLORATION STUDY GROUP

*Fortitudine Vincimus* -- By Endurance We Conquer -- the family motto of explorer Sir Ernest Shackleton perfectly captures the spirit and goals of the new Explorers and Exploration Study Group.

Library members Jan Belle and Carl Barna are forming this new group to focus on Polar Philately, explorers and their ships of exploration, and maps on stamps.

The first meeting will be held on Saturday, November 19, at noon at the RMPL. Come and join us as we launch this new philatelic voyage of learning and discovery.

## PERIODICALS WANTED

### *Missing from the Shelves*

There are many gaps in the library's periodical collections which we would like to fill in, so we are turning to our members for help. Almost all of our books, auction catalogs and periodicals have been donated. Those donations are critical to the library's success.



Here are specific issues which are needed:

### **THE AIRPOST JOURNAL**

- Vol. 1 (1930-1931) All issues.
- Vol. 2 (1931-1932) Numbers 1-6 and 10-12.
- Vol. 3 (1932-1933) All issues.
- Vol. 4 (1933-1934) Numbers 1-4, 6-8 and 11-12.
- Vol. 5 (1934-1935) Numbers 1-8 and 10-12.
- Vol. 6 (1935) Numbers 1-2.
- Vol. 71 (2000) Number 6.
- Vol. 75 (2004) Numbers 5-9 and 11-12.
- Vol. 76 (2005) Numbers 1 and 4-5.

## ADDITIONS TO THE RMPL SHELVES

### UNITED STATES

*A Comprehensive Bureau Precancel Checklist for Regularly Issued Stamps: 1954 Liberty Series, 1965 Prominent American Series and 1975 Americana Series* compiled by Jim Bardo, [no date].

*The Dr. Robert Hinrichs Collection of U.S. Stamps*, an auction by Shreves Philatelic Galleries, May 21, 2004.

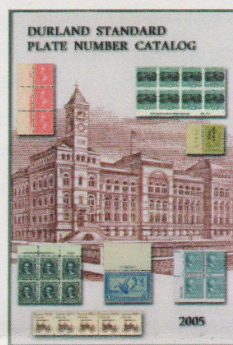
*Durland Standard Plate Number Catalog* compiled and edited by Kim D. Johnson and W. Wallace Cleland, 2005.

*Exhibition Stamps Reference Volume* Compiled by Sergio Lugo and Maury Pautz, based on contributions from Dasa Metzler and others, 2005.

*Herbert's Catalogue of Used Plate Number Singles*, 1975.

*Inaugural Trip Highway Post Office Routes* by the U.S. Post Office Department [c. 1951].

*Introduction to Stamp Collecting*, United States Postal Service, 1980.



*It's a Wrap!: U.S. Revenue Stamps Used on Playing Cards 1862-1883*, by Kristin Patterson, 2003.

*Minkus The New American Stamp Catalog*, Lester Brookman, editor-in-chief, 1954 edition.

*Norona's General Catalog of Postmarks of the United States* revised by Harry M. Konwiser, 1946.

*The Origin of the Place Names of Nebraska (The Toponymy of Nebraska)* by J.T. Link, 1933.

*Post Offices of Delaware and the District of Columbia* by Frank M. Crowther and Lawrence M. Merolla, 1978.

*The Postal Service Guide to U.S. Stamps*, United States Postal Service, 2002 29th edition.

*Postmarked Kentucky* by Alan T. Atkins, 1975.

*Precancel Stamp Society Catalog of United States Bureau Precancels* 4th Edition, 1997.

*The Precancel Stamp Society's Town and Type Catalog of the United States and Territories* 1st Edition, 1973.

*Private Printed Franks on U.S. Government Envelopes* by Austin P. Haller, 1989.

*The 2003 Commemorative Stamp Yearbook*, United States Postal Service, 2004.

*Transatlantic Mails (Steamship)*, an exhibit by Richard F. Winter, 1988.

*United States Stamp Identifier* produced by H.E. Harris and Co., [no date].

*United States Waterway Packetmarks Supplement: 1818-1899* by Eugene Klein, 1942.

*U.S. Liquor State Revenue Stamps from the Hubbard Estate*, Nutmeg Stamps Sales mail auction 100, July 14, 2005.

*U.S. Postal Markings Impressed by Machine: Volumes 1 and 2* by Bart Billings, Robert Payne and Reg Morris, 2004.

*The U.S. 3¢ 1857 Issue*, an exhibit by Robert R. Hegland, 1988.

## UNITED NATIONS

*The United Nations Archives*, an auction by Greg Manning Galleries, November 18-21, 2003.

*United Nations Stamps of the World* by Edgar H.B. Parkin and Donald E. Magee, 1964.

## CANADA AND BNA

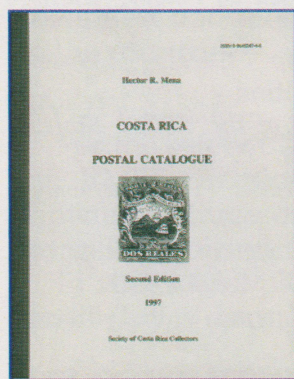
*Canada Cover Catalogue 6th Edition* by Tom McAlpin and Will Gandley, 1977.

*Scott Specialized Catalogue of Canadian Stamps*, 1989.  
*Souvenir Collection of the Postage Stamps of Canada*, 1981, 1982, 1984, 1985, 1986.

*Webb's Postal Stationery Catalogue of Canada and Newfoundland 5th Edition* edited by Earle L. Covert and William C. Walton, 1988.

## CENTRAL AMERICA

*Costa Rica Postal Catalogue* by Hector R. Mena, 1997  
2nd edition.



## EUROPE

*Collect Post Office Cards (of Great Britain)* by B.H. Townsend, 1983 2nd edition.

*Croatia Issues: 1941-1945* by Helmut Rommerskirchen, 1976; revised and edited by Philip J. Hughes, 2004.

*Deutschland Netto-Katalog*, DNK, 1968.

*Katalog der Vignetten zu den Olympischen Spielen* by Paul F. Rampacher, 1959.

*Michel Briefmarken-Katalog: Band: Europa 1924/25*.

*Michel Deutschland Briefmarken-Kataloge*, 1972, 1973.

*Michel Afrika 1993 (A-L): Übersee Band 3*,

*Michel Afrika 1993 (M-Z): Übersee Band 3*.

*Michel Asien II: Übersee Band 5/II*, 1980.

*Michel Mittel: Und Nordamerika 1984/85 Übersee Band 1*.

*Michel Österreich-Spezial 1988*.

*The Michel Stamp Catalogue: An Introduction for English-speaking Readers* compiled by Martyn Yeo, 1995.

*Mytologiska Och Religionshistoriska Motiv På Frimärken* by Rolf Gummesson, 1936.

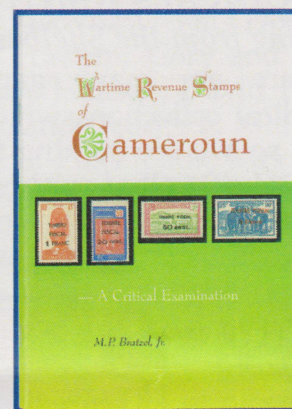
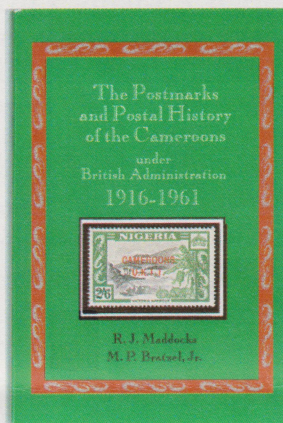
*Norges Poststeder (Town names in Norway)*, 1967

*Papież-pielgrzym: Jan Paweł II na znaczkach pocztowych świata* by Ks. Waldemar Chrostowski, 1988.

*Paris par Moulins 1870-71* by Günther Heyd, 1969.

*Slovenský Stát 1939* by Hugo Kaufmann.

*Specialized Catalogue of Postage Stamps and Postal Stationery of Latvia 1990-2001* by Philatelic Society of Latvia, 8th edition, 2002; 10th edition, 2004; 11th edition, 2005.



## AFRICA

*Les Oblitérations du Cameroun 1914-1960* by M.P. Bratzel, Jr., H. Kraja and R.J. Maddocks, 1990.

*The Wartime Revenue Stamps of Cameroun: A Critical Examination* by M.P. Bratzel, Jr., 1996.

*The Postmarks and Postal History of the Cameroons under British Administration 1916-1961* by R.J. Maddocks and M.P. Bratzel, Jr., 1994.

*Post 1987 Dates* by Kenneth A. Wood, 1988.

## ASIA AND THE PACIFIC

*KPC-Korean Postage Stamp Catalogue*, 1995.

*National Revenue Stamps of China* by A.W. Bendig, 1957.

*Norfolk Island Stamps 1947-1991: The Story Behind the Stamp* by Norfolk Island Postal Services, 1992.

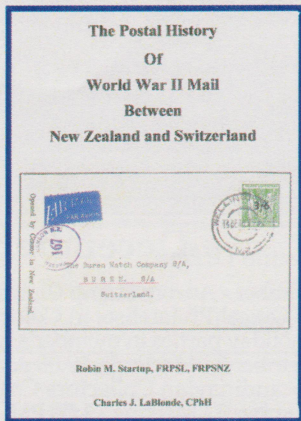
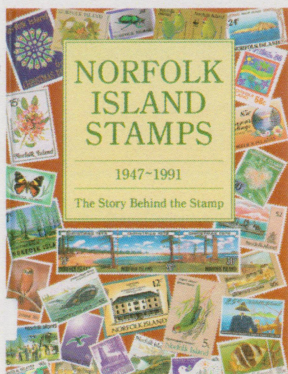
*Sakura Catalog of Japanese Stamps*, 1996.

*Spring Festival* by China National Philatelic Corporation, 2000.

*Yang's Postage Stamp and Postal History Catalogue of Hong Kong* edited by Nai-Chiang Yang, 1994.

## OTHER WORLDWIDE

*The Postal History of World War II Mail between New*



## WESTERN HISTORY

- Air Force Academy: Gateway to the Stars* [no author], 1968.  
*The Griffith Family and the Founding of Georgetown* by Liston E. Leyendecker, 2001.  
*Historical Atlas of Arizona* by Henry P. Walker and Don Bufkin, 1979.  
*Memories of Denver - Story of His Boyhood When Denver was Young and Wild: 1887-1965* by Jake Schaetzel, 1970.  
*The Rise of the Silver Queen: Georgetown, Colorado, 1859-1896* by Liston E. Leyendecker, Christine A. Bradley and Duane A. Smith, 2005.  
*The Territorial Post Offices of Colorado* by Sheldon H. Dike, 1957.

## OTHER CATEGORIES

- Cassell's New Compact French Dictionary: French-English; English-French* compiled by J.H. Douglas and others, 1968.  
*The Constitution of the United States of America: The Bicentennial Keepsake Edition*, 1987.  
*From the Winged Heels of Mercury* by Zaven M. Seron, 1984.  
*German/English Philatelic Dictionary*, Germany Philatelic Society, 2005.  
*The Professional Rare Stamp Hunter's Guide Book: An Encyclopedia of the Rare Stamps of the World* compiled by Vernon E. Baker, 1942.  
*What Philately Teaches: A lecture delivered before the section on philately of the Brooklyn Institute of Arts and Sciences* by John N. Luff, 1899.

*Zealand and Switzerland* by Robin M. Startup and Charles J. LaBlonde, 2005.

*Greenland GF1: Pakke Porto Stamps 1905 - 1938* by Eric v.Wowern.

## TOPICALS

- Insects on Stamps of the World Volume 3* by Donald Wright, Jr., 2005.  
*Medicinal Plants on Stamps* by Samuel M. Bluefarb, 1996.  
*Mini-Adventures in Topical Stamp Collecting* by George Griffenhagen and Jerome Husak, 1981.  
*1967 Sport Olympik Pricelist and Checklist* by Roland Rindshoj.  
*Sarajevo and Los Angeles Olympics: Band - Volume II: Ganzsachen und Luftpost* by Manfred Winterheimer, 1987.  
*Topical Stamp Collecting: A Universal Hobby for Seniors* by John Groet and Ray Cartier, 2003. ATA Handbook 148.  
*World Railways Philatelic* by Norman E. Wright, Sr., 2000. ATA Handbook 138.  
 For the above: *Supplement Nos. 1, 2, 3, 4 and 5 - 2001, 2002, 2003, 2004 and 2005.*

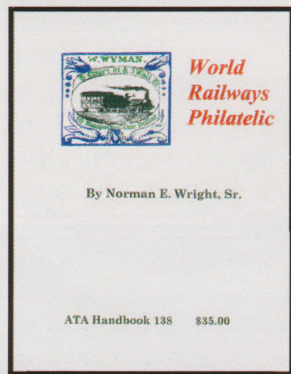


## Denver Stamp Club 100th Anniversary Celebration

Monday, November 21, 2005  
 Dinner at 6:30 PM at the Old Spaghetti Factory,  
 18th and Lawrence. Tickets \$20.

- **Program** (APS Executive Director Bob Lamb will attend.)
- **Door Prizes** (Plenty of them and all very nice, too!)
- **History of Denver Cancels** (Display courtesy of Don Beuthel.)

The night promises to be a memorable one for philately in Colorado. Plan to attend!



# What's Happening at the RMPL...

"Come and enjoy the activities"

Monday.....10:00 AM - 4:00 PM

Tuesday.....10:00 AM - 4:00 PM

Wednesday.....10:00 AM - 4:00 PM

Thursday.....2:00 PM - 8:00 PM

Friday.....10:00 AM - 4:00 PM

Saturday.....10:00 AM - 4:00 PM

Closed Sundays and Holidays

## November 2005

November 2 - Meeting - Aurora Stamp Club  
6:30 PM Trading - 5¢ Box - APS Circuit  
7:30 PM Meeting with program by Don Beuthel:  
"Denver's Postal Past: The First 60+ Years"

November 5 - Meeting - 10:00 AM  
Scandinavian Collectors Club

November 5 - Meeting - 2:00 PM  
TOPIC - Topical Philatelists in Colorado

November 9 - Meeting - 7:00 PM  
Denver Germany Stamp Club

### **CLOSED**

**November 11 (Friday) Veterans Day**

November 12 - Second Saturday at the RMPL -  
9:00 AM

Program by Roger Cichorz  
"The Wreck of HMS Montagu"

November 12 - Meeting - 10:00 AM  
Mexico/Latin America Study Group

November 12 - Meeting - 2:00 PM  
Universal Ship Cancellation Society  
U.S.S. Colorado Chapter

November 12 - Meeting - 2:00 PM  
Colorado Postal History Society  
Program by Jerry Eggleston and others.

November 17 - Meeting - 7:00 PM  
Rocky Mountain Philatelic Library Board  
All members are welcome.

November 19 - Meeting - 10:00 AM  
Metro Denver Young Stamp Collectors Club

November 19 - Meeting - Noon  
Explorers and Exploration Study Group

November 19 - Meeting - 2:00 PM  
Russia Study Group

November 22 - Meeting - 7:30 PM  
Rocky Mountain Stamp Show Committee

**November 24 - CLOSED - Thanksgiving Day**

November 26 - Workshop - 10:00 AM  
RMSS/RMPL Exhibiting Workshop  
(Please call the library for reservations.)

November 26 - Meeting - 2:00 PM  
China Stamp Society

## December 2005

December - Aurora Stamp Club and  
TOPICAL Philatelists in Colorado (TOPIC) will have  
holiday parties in member's homes.

December 3 - Meeting - 10:00 AM  
Scandinavian Collectors Club

December 3 - Meeting - 1:00 PM  
Colorado Postal History Society Fall Encounter

December 10 - Second Saturday at the RMPL -  
9:00 AM

Program by Gene McGruer  
"Germany's 1923 High Inflation Period"

December 10 - Holiday Party - 11:30 AM  
Mexico/Latin America Study Group,  
Rocky Mountain Aerophilatelists and  
Universal Ship Cancellation Society  
(combined club celebration)

December 14 - Meeting - 7:00 PM  
Denver Germany Stamp Club

December 17 - Meeting - 2:00 PM  
Russia Study Group

### **CLOSED**

**December 24 - 26 (Saturday thru Monday)**  
Christmas holiday

### **CLOSED**

**December 31 - January 2 (Saturday thru Monday)**  
New Year's holiday

The Metro Denver Young Stamp Collectors Club is up and running. If you know a youngster who could use a boost toward the hobby, bring him/her by the library on Saturday, November 19th at 10:00 AM.

Retired Presbyterian minister Peter Adgie has a good program scheduled and he has a way with kids that'll get 'em hooked!

## Monthly Stamp Show Schedule...

### **November 5 - Colorado Stamp Show**

Embassy Suites Hotel Southeast - 7525 E. Hampden Ave., Denver (I-25 at Hampden Ave, Exit 201, east 3/4 mile, hotel on the left)

Hours: 10:00 AM - 5:00 PM

Contact: 20th Century Classics - Pat Dowling - P.O. Box 7536, Colorado Springs, CO 80933 (719) 598-7307

E-mail: 20thonline@adelp[hia].net

### **November 11 - 12 - BOCOPEX 2005**

Boulder Outlook Hotel and Suites (formerly the Holiday Inn), 28th and Baseline.

Hours: 10:00 AM to 5:00 PM

Contact: John Canady - E-Mail: canady2017@msn.com.

*Scribblings* is published bimonthly by the Rocky Mountain Philatelic Library, 2038 S Pontiac Way, Denver, CO 80224

The Rocky Mountain Philatelic Library is a chartered Colorado nonprofit corporation. Membership subscriptions over that for the annual regular membership, and donations of appropriate philatelic materials, are deductible for U.S. income tax purposes. The RMPL is an Internal Revenue Service designated 501 (c)(3) charitable organization.

### **RMPL Board of Directors**

President and *Scribblings* Editor: Ron Mitchell - Operations Manager: Don Beuthel - Vice-President: Jim Kilbane - Corresponding

Secretary: Robert Brown - Recording Secretary: Maury Pautz - Treasurer: Bob Blatherwick

Members at Large: Tim Bartshe - Sergio Lugo - James L. Ozment - Steve Schweighofer - John H. Willard (Emeritus)