

# Scribblings

...from the Rocky Mountain Philatelic Library



Vol. 13 - No. 2

www.RockyMountainPhilatelicLibrary.com

2038 S Pontiac Way, Denver, CO 80224

303 - 759-9921

Ellengail Beuthel, Librarian

March - April, 2005

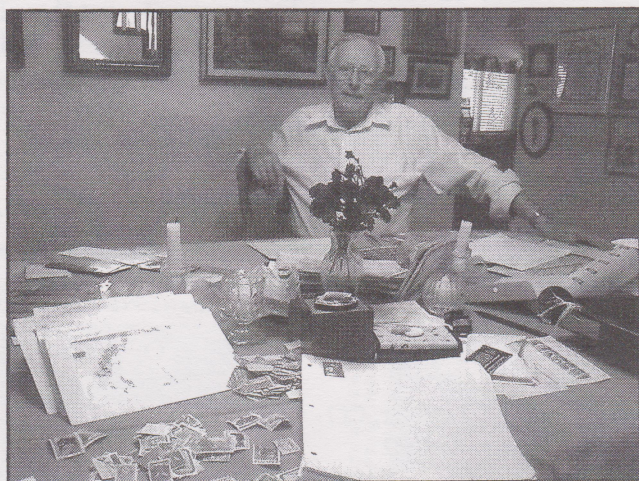
E-mail: rmpl@qwest.net

Members of the library will have first choice...

## Bill Dunn's Stamp Collections

By Ron Mitchell, RMPL President

Bill Dunn passed away in February 2004, but he continues to serve the library he loved so much. At his request, proceeds from the sale of his stamp collections will be shared with the Rocky Mountain Philatelic Library.



Bill Dunn's "stamp den" was the dining room in his home, where he worked on his many collections almost daily at his dining room table.

Bill was a founder of the RMPL, and he was one of its hardest working volunteers. His knowledge, wisdom and guidance are sorely missed. It is fitting that we can continue to learn from him through his stamps.

Individual stamps and collections will be for sale exclusively to members at the the library on March 19th, the third Saturday of the month, from 10 AM to 4 PM.

The sale will continue the following Saturday, March 26th, and will be open to anyone, not just members, during the same hours.

### THE COLLECTIONS

There is only enough space here to give a brief description of what is available. For more detail, please go to the library's site on the world wide web at [rockymountainphilateliclibrary.com](http://rockymountainphilateliclibrary.com) and click on "The Bill Dunn Collection." You will find examples that give a good idea of what is available.

**U.S. STAMPS...** There are hundreds of singles sorted by Scott Catalogue number and put in binders, mostly one to a page to make them easy to view and access. Please bring your own tongs so you can take them out of their sleeves for close examination.

There are good selections of Washington-Franklins, vending and private perforations, back-of-the-book, including air mails, ducks and possessions (particularly strong in Cuba).

**U.S. POSTAL HISTORY...** This includes a small number of Colorado cancels, some general interest covers, and a number of slogan cancels.

**1-1/2¢ HARDING COLLECTION...** A fairly extensive showing of Hardings with an exhibit.

**LIBERTY SERIES...** Some of this group has been sold to specialists around the country, per Bill's wishes, but there is still a good selection from which to choose.

**U.S. POSTAL STATIONERY...** There is an extremely clean exhibit/collection of postal cards and reply cards which Bill put together years ago. There is also a nice collection of postal stationery, including entires and some older cut squares.

**LATVIA AND CROATIA...** These two countries were Bill's most recent philatelic interests. Each is grouped into one lot, complete with his notes and accumulated literature.

**MISCELLANEOUS...** Includes 1922 2¢ carmines and the 1954 Liberty series in bulk, tagged covers, and "testing" coils.

**A WORD ABOUT PRICING...** For this sale, most stamps will be discounted to forty percent of *Scott Catalogue* value.

We are using the *Valuing Supplement*, a relatively new product from Scott that breaks down each stamp into grades of centering.

The *Scott Specialized* lists stamps only in very fine condition, but the *Valuing Supplement* allows us to set the prices more accurately according to centering.

(Continued on next page)

(Continued from page 1)

SC#	DENOM	COLOR	CONDITION	V. GOOD	FINE	F-VF	V. FINE
77	15c	black	Used	60	105	125	175
			Unused NG	300	550	800	1,250
			Unused OG	725	1,150	1,850	3,000

A listing from the Scott Valuing Supplement pricing No. 77 in four different conditions of centering.

			
#77, vg Cat \$60 Net \$24	#113, fine Cat \$45 Net \$18	#186, f-vf Cat \$17.50 Net \$7	#288, very fine Cat \$21 Net \$8.40

Stamps from the sale showing examples of the four basic conditions with the Scott price. The net price, offered to RMPL members on March 19th, is forty percent of the Scott Valuing Supplement listing.

**DAMAGED STAMPS...** Most stamps that are space fillers are priced at ten percent of the very good, or lowest, price in the *Valuing Supplement*.

Those with heavy cancels are discounted below the forty percent level.

**COLLECTIONS AND LOTS...** Bill left instructions to sell his foreign material at one-third to one-half of catalog. We have had help from library members with expertise in certain areas in order to set fair prices.

## News from the RMPL ...

### SNOW DAYS

A reminder that March and April are our snowiest months, so if there is a snowfall of six or more inches, or if a major storm appears imminent, the library will probably be closed for the safety of our volunteers and patrons. Please call ahead if you're not sure if the library will be open.

### NEW E-MAIL ADDRESSES NEEDED

We have occasion to send e-mails to members once every three or four months. If this is acceptable to you, we would appreciate having your address.

Many of those we have on file are outdated. If you suspect the RMPL does not have your current address, please take a moment to send it in. Our address is [rmpl@qwest.net](mailto:rmpl@qwest.net).

### NEW MEMBERS

Natasha Laity-Snyder, Denver, CO - Collects Parrots, U.S., Great Britain, and Mexico.

Civia Tuteur, Chicago, IL - Collects American Library Association, Mexico, and Massachusetts Postal History.

Gene M. Holgate, Highlands Ranch, CO - Collects U.S., U.N.

If you have a stamp collecting friend who is not a library member, please bring them with you on March 19, and have them join the RMPL. That way they will be eligible to take part in the sale the first day the material is offered, and the library will gain a member.

Also, if you are a member but are behind in your dues, this would be a good time to bring your membership account up to date.

The board and volunteers of the RMPL wish to thank Sue, Bill's widow for her wonderful cooperation in preparing this sale. Bill asked her to share the proceeds fifty-fifty with the library, and she has gone out of her way to make sure his wishes are followed.

We are very grateful for this important donation.

## BILL DUNN COLLECTIONS NET PRICE SALE

View "Bill Dunn Collections" at  
[www.RockyMountainPhilatelicLibrary.com](http://www.RockyMountainPhilatelicLibrary.com)

**RMPL Members Only**

**Saturday, March 19, 2005**

**10:00 AM TO 4:00 PM**

Open to All

**Saturday, March 26, 2005**

**10:00 AM TO 4:00 PM**

Rocky Mountain Philatelic Library  
2038 So. Pontiac Way

Nick Ioannides, Highlands Ranch, CO - Collects Cyprus and Greece.

Joan B. Aucrigg, Denver, CO - Collects U.S. and BNA.

Carl Barna, Arvada, CO

Anthony Kounalis, Denver, CO - Collects U.S. and Greece.

Victor Martin, Arvada, CO

Robin T. Wilderness, Cheyenne, WY

Dennis D. Bland, Cheyenne, WY - Collects U.S. Canada, Scandinavia, French Colonies

## THANK YOU FOR DONATIONS

The following people and organizations donated cash, philatelic literature or other philatelic materials to the library during December and January:

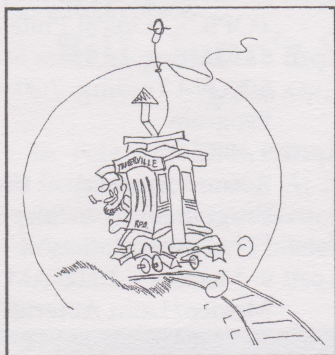
Peter Adgie, Barb and Dale Anderson, Herman Axelrod, Tim Bartshe, Jan Marie Belle, Donald G. Beuthel, John Bloor, Eugene S. Brin, British North America Philatelic Society, Bob Brown, Robert A. Bruhn, CHICAGOPEX 2004, Colorado Postal History Society, Joe Coston, Bill Cox, Thomas Crawford, Denver Germany Stamp Club, Nolan Flowers, Jr., Kenton Forrest, Helen Fowler Library, Charlene Gail, Samuel Ginsburg, Eugene Goodwin, Peter E. Goodyear, Eddie Hackstaff, Rod Haenni (Arapahoe Stamp & Coin), Don Halpern and Max Hickox.

Also, Alex Ioannides, Brian Kelly, Harold Lord, Stanley J. Luft, Glenn Mallory, Gene McGurer, Harry W. Methner, Dasa Metzler, Mike Milam, Bill & Carol Mobley, Bob Ortega, Stephen Pacetti, Steve Peckar, Bill Plachte, Tom Pollard, William J. Redgrave, Jim Reichman, Jean Richsat, Carol P. Roy, Roger Rydberg, Scandinavian Collectors Club, Marc Silberman, Richard E. Small, George Snyder, David Snyder, Morgan Sonsthagen, Colin Spong, Tom TenEyck, Dalene Thomas, Jill S. Tietven, Civia Tuteur, Estate of Merlyn Utter, Mark and Felice Vainer, Jack Van Ens, Steve Wineteer, Judith Wright, John Wright and Matt Zieringer.

## SECOND SATURDAY PROGRAMS

March 12

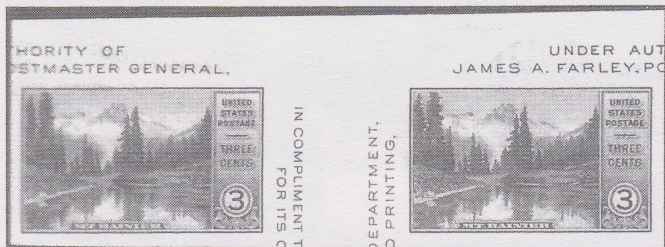
Jack Willard, one of our library founders, will present "Trolley Car RPOs, A Study of Electric Line Mail Routes and Their Markings," from a collection he built up over many years.



From "Trolley Car RPOs" by Jack Willard.

At least 17 cities ran trolley mail service before the program was phased out.

April 9



From "The Farley Follies" by Tom Surprenant.

Library volunteer Tom Surprenant will show "The Farley Follies." You'll see souvenir sheets in uncut sheets of nine and learn the true story behind the reissue of the imperforate National Parks Issue. Tom has it all!

Second Saturday programs are from 9:00 to 10:00 AM, with donuts and coffee and good conversation with fellow collectors.

Attendance at recent programs has been between 20 and 40, so come early for a good seat, and please bring a friend.

## VIC NEAS DONATION

RMPL member Vic Neas of Lakewood has donated an accumulation of stamps with an appraised value of \$140,000.

"I'm happy to give it to the library," he told us, "but I'm going to get a good tax write off, too. It'll save

me some tax money."

Vic has been collecting stamps since he was 12-years-old in 1928. He says he's giving up buying more stamps, and is ready to part with some of them.

He built up what he calls "a worldwide collection that was out of this world" by buying collections from estates through Joe Weinman, a local dealer and one of the founders of the RMPL. Vic took out stamps he needed for his worldwide albums, and put the remainders in boxes in storage. It is those stamps that make up the bulk of his donation.

"There are plenty of stamps with the minimum value of 20¢ in there," he admitted, "but there are many, many better ones, too."

The donation is in 16 cartons, with more than a hundred albums included.

Vic says he hopes his donation will encourage others with accumulations like his to give theirs to the library, too.

IRS rules for nonprofits require the RMPL to keep the stamps for two-and-a-half years before they may be sold. In June of 2007, they will be carefully lotted and offered to library patrons. Thank you Vic!

## ADDITIONS TO THE SHELVES



Here are some of the items recently added to the RMPL collection:

### WORLDWIDE

Niger Coast, compiled by W. J. Redgrave, 1997.

"Postal History Map of Britain," Bartholomew & Son Ltd. [no date].

T.P.O.: A History of the Travelling Post Offices of Great Britain. - Part 1: England - "The Specials" and Associated T.P.O.s by H. S. Wilson, 1971.

### UNITED STATES

Early Buffalo (N.Y.) Postal History, an exhibit by Nate Calkins [no date].

Gabriel Illustrated Advertising Covers; Banchick U.S. Wrapper Bands, an auction by Nutmeg Stamp Sales, November 7, 2001.

Grinnell Missionary Stamps, published on the internet by Smithsonian National Postal Museum, [no date].

The Stamps and Postal History of Hawaii by Henry Meyer, William Davey, et al., 1948.

Use of the 1-Cent Franklin Series of 1902, an exhibit by David Steidley, 1996.

# What's Happening at the RMPL...

"Come and enjoy the activities"

Monday.....10:00 AM - 4:00 PM  
Thursday.....2:00 PM - 8:00 PM

Tuesday.....10:00 AM - 4:00 PM  
Friday.....10:00 AM - 4:00 PM  
Closed Sundays and Holidays

Wednesday.....10:00 AM - 4:00 PM  
Saturday.....10:00 AM - 4:00 PM

## March 2005

- March 2** - Meeting - Aurora Stamp Club  
6:30 PM Trading; 7:30 PM Meeting and Program
- March 5** - Meeting - 10:00 AM  
Scandinavian Collectors Club
- March 5** - Meeting - 2:00 PM  
TOPIC - TOPical Philatelists In Colorado
- March 9** - Meeting - 7:00 PM  
Denver Germany Stamp Club
- March 12** - 9:00 AM  
**Second Saturday at the RMPL**  
Program by Jack Willard  
"Trolley Car RPOs"
- March 12** - Meeting - 10:00 AM  
Mexico/Latin America Study Group
- March 12** - Meeting - 2:00 PM  
Universal Ship Cancellation Society  
U.S.S. Colorado Chapter
- March 19** - **BILL DUNN COLLECTION SALE**  
**Members only. 10 AM to 4 PM**
- March 19** - Meeting - 2:00 PM  
Russia Study Group
- March 22** - 7:30 PM - Meeting  
Rocky Mountain Stamp Show Committee
- March 26** - **BILL DUNN COLLECTION SALE**  
**Open to all. 10 AM to 4 PM**
- March 26** - Workshop - 10:00 AM  
RMSS/RMPL Exhibiting Workshop
- March 26** - Meeting - 1:00 PM  
China Stamp Society

## April 2005

- April 2** - Meeting - 10:00 AM  
Scandinavian Collectors Club
- April 2** - Meeting - 2:00 PM  
TOPIC - TOPical Philatelists In Colorado
- April 6** - Meeting - Aurora Stamp Club  
6:30 PM Trading; 7:30 PM Meeting and Program
- April 9** - 9:00 AM  
**Second Saturday at the RMPL**  
Program by Tom Surprenant.  
"The Farley Follies"
- April 9** - Meeting - 10:00 AM  
Mexico/Latin America Study Group
- April 9** - Meeting - 2:00 PM  
Universal Ship Cancellation Society  
U.S.S. Colorado Chapter
- April 13** - Meeting - 7:00 PM  
Denver Germany Stamp Club
- April 16** - Meeting - 2:00 PM  
Russia Study Group
- April 23** - Workshop - 10:00 AM  
RMSS/RMPL Exhibiting Workshop
- April 23** - Meeting - 1:00 PM  
China Stamp Society
- April 26** - 7:30 PM - Meeting  
Rocky Mountain Stamp Show Committee

## Monthly Stamp Show Schedule...

**March 5** - Colorado Stamp Show, Embassy Suites Hotel - Southeast, 7525 E Hampden A., Denver, CO - (1-25 at Hampden Av, Exit 201, east 3/4 mile, Hotel on the left)

Contact: 20th Century Classics - Pat Dowling, P.O. Box 7536, Colorado Springs CO 80933  
719.598.7307 - 20thonline@adelphia.net

**April 1 - 2** - Colorado Stamp Show Bonanza, Embassy Suites Hotel - Southeast, 7525 E Hampden A., Denver, CO - (1-25 at Hampden Av, Exit 201, east 3/4 mile, Hotel on the left)

Contact: 20th Century Classics - Pat Dowling, P.O. Box 7536, Colorado Springs CO 80933  
719.598.7307 - 20thonline@adelphia.net

*Scribblings* is published bimonthly by the Rocky Mountain Philatelic Library, 2038 S Pontiac Way, Denver, CO 80224

The Rocky Mountain Philatelic Library is a chartered Colorado nonprofit corporation. Membership subscriptions over that for the annual regular membership, and donations of appropriate philatelic materials, are deductible for U.S. income tax purposes. The RMPL is an Internal Revenue Service designated 501 (c)(3) charitable organization.

### RMPL Board of Directors

President and *Scribblings* Editor: Ron Mitchell - Operations Manager: Don Beuthel - Vice-President: Jim Kilbane - Corresponding Secretary: Robert Brown - Recording Secretary: Maury Pautz - Treasurer: Bob Blatherwick  
Members at Large: Tim Bartshe - Sergio Lugo - James L. Ozment - Steve Schweighofer - John H. Willard (Emeritus)