

Scribblings

...from the Rocky Mountain Philatelic Library



Vol. 10 - No. 5

2038 So. Pontiac Way, Denver, CO 80224

September - October, 2002

www.rockymountainphilateliclibrary.com

303 - 759-9921

E-mail - info@rockymountainphilateliclibrary.com

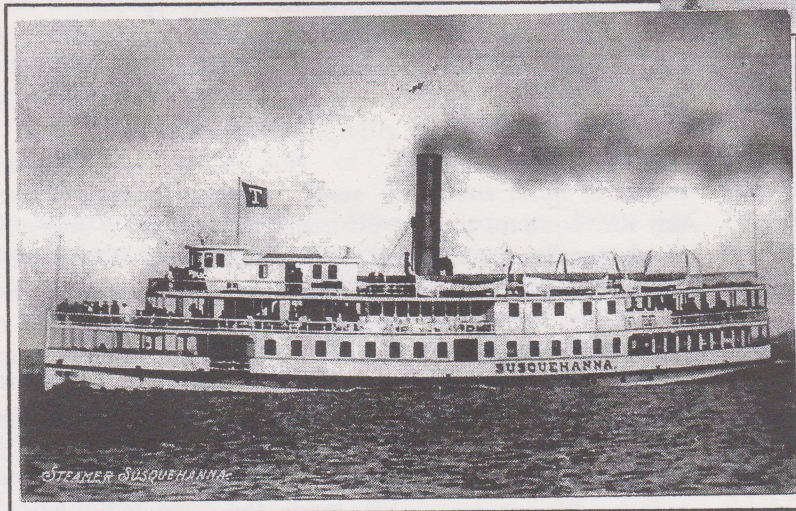
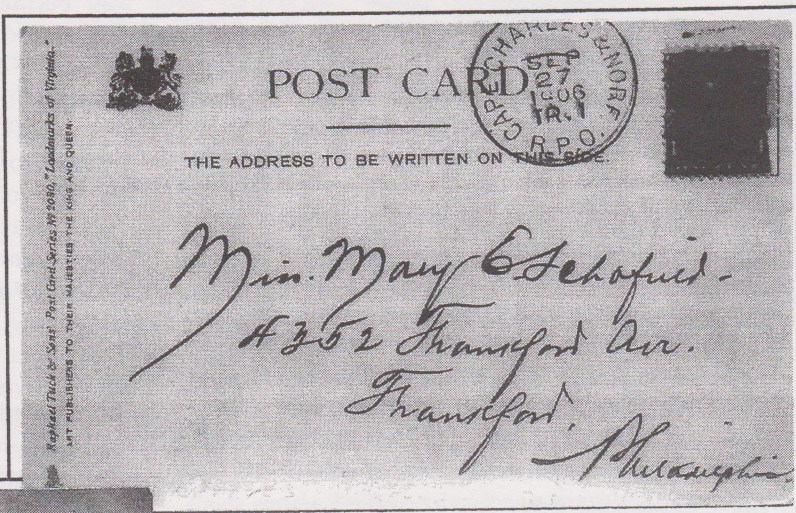
Research at the RMPL...

A RAILROAD POST OFFICE ON THE CHESAPEAKE BAY

By: Ron Mitchell as told by Jack Willard, RMPL Board Members

RMPL founder Jack Willard was looking through a box of covers at a dealer's table at the Rocky Mountain Stamp Show earlier this year, the same way he's been looking since the annual show began in 1948. He spotted an R.P.O. cancel and said to himself, "Something just doesn't look right!"

Jack bought the postcard for \$5.00 and brought it with him on his next trip to the library. He dug into a couple of books, and started looking for the story behind the card. He has had a similar card in his collection for years, but the cancel showed Train 49. "There's something different about this card," thought Jack. And indeed, Train 1 turned out not to be a train at all.



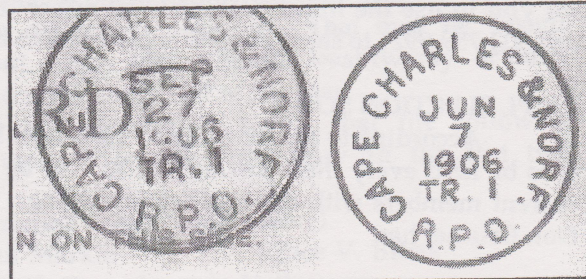
A TRAIN WITH NO TRACKS

Jack discovered that back in 1906, the familiar sound of a steam whistle and the clang of a bell on the Cape Charles and Norfolk R.R. Train 1 was coming from the steam engine on a boat and from the ship's bell.

A ship similar to one which carried mail as Train 1 on the Cape Charles and Norfolk R.R. on the Chesapeake Bay in 1906. (From Jack Willard's collection.)

Jack found that the Cape Charles and Norfolk R.R. was owned by the New York, Philadelphia and Norfolk R.R., and looked it up in a 1906 Traveler's Guide. The Train 1 ship ran once a day between Norfolk and Cape Charles, Virginia. It was Train 2 on the return trip.

Passengers headed north from Norfolk toward New York City would buy their train ticket, board the boat and ride it across the mouth of the Chesapeake Bay to Cape Charles, where they would transfer to a train for the rest of the trip.



On the left, the cancel on Jack's post card. On the right, the cancel tracing found in Postal Markings of U.S. Waterway Routes 1839-1997 by Fred MacDonald, published by the Mobile Post Office Society.

R.R., and looked it up in a 1906 Traveler's Guide. The Train 1 ship ran once a day between Norfolk and Cape Charles, Virginia. It was Train 2 on the return trip.

Passengers headed north from Norfolk toward New York City would buy their train ticket, board the boat and ride it across the mouth of the Chesapeake Bay to Cape Charles, where they would transfer to a train for the rest of the trip.

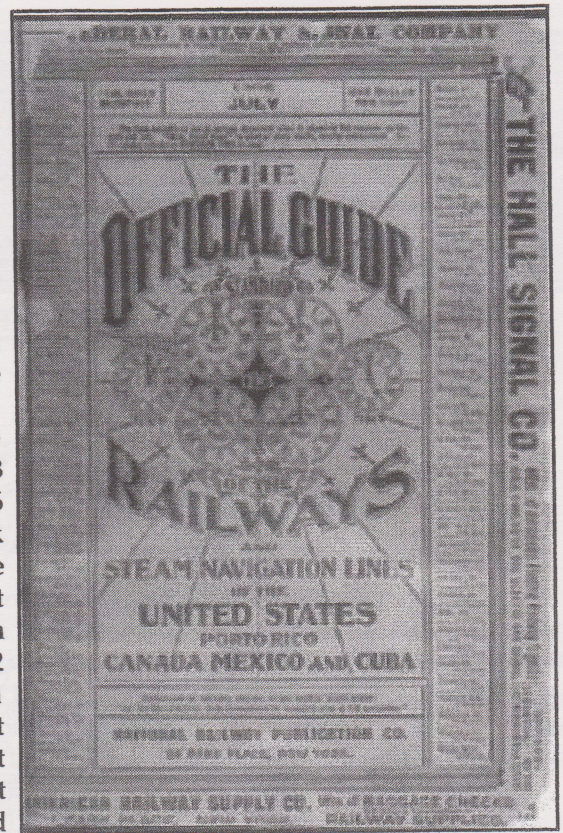
The schedule shows the trip on the boat took 3 hours, 14 minutes across 36 miles. One reason it took so long was because the boat stopped at Old Point Comfort, site of a lighthouse built in 1802 that is still a navigational aid today. It is also the site of Fort Monroe, an important Union Army stronghold during the Civil War, and later was a training center during World Wars I and II.

Cape Charles was established in 1884 when the New York, Philadelphia and Norfolk Railroad was extended southward. The last rail barge in the country still operates between Cape Charles and Norfolk. A bridge-tunnel connecting the cities was completed in the 1960s.

The cancel on a \$5 postcard led Jack to a fruitful and fun couple of hours



Map from the August, 1906 Traveler's Official Railroad Guide, published by The National Railway Publication Company. A ship designated Train 1 made a daily trip across the mouth of the Chesapeake Bay, to the left of the "P" in Philadelphia on the map.



The cover from the Traveler's Guide.

in the library.

News From the RMPL...

RMPL CLOSED

The Rocky Mountain Philatelic Library will be officially closed on Saturday, August 31st and Monday, September 2nd for the Labor Day Weekend. Some of the Volunteers show up on days when we are closed to get work done when no one is around. Should it be necessary for you to use the library facilities on either day, please call 303-759-9921 to see if anyone is planning to be present.

RMPL ELECTION SOON

According to the By-Laws of the RMPL an election is to be held every three years. Ballots will be sent to all current members with the Jan/Feb Scribblings. President Don Beuthel has

appointed a Nominating Committee consisting of Bob Blatherwick, current RMPL Treasurer as Chairman; Maury Pautz, Board Member; and Roger Rydberg, Membership Chairman.

Any RMPL member interested in serving as an officers or board member for the next three years should contact the Bob Blatherwick at 720-748-2049 prior to October 15 th.

SECOND SATURDAY AT THE RMPL

Second Saturday at the RMPL programs continue to have good attendance. On any given Second Saturday you will find 10 to 20 persons at the RMPL for the 9:00 AM instructional program. The coffee pot is working overtime and the "donut fairy" has made the expected magical appearance. If you haven't attended one of these, you should make the effort to attend. Get here early because the parking lot fills up fast.

The Second Saturday at the RMPL for September 14th features a program by Jim Kilbane - "Iowa Stampless".

The October 12th Second Saturday at the RMPL will be a program by Dr. John Bloor - "Russian Air Fleet Labels"

We look forward to seeing you at one, or both, of

these presentations. This is a great time to introduce a friend to the benefits available through the RMPL.

We are always looking for persons willing to do a Second Saturday presentation. There are many openings in the 2003 calendar year at this time. Why not share our knowledge with the other members. To volunteer, call Don Beuthel at 303-755-9328.

SPECIAL ACTIVITIES FOR OCTOBER

In past years, we have tried to have some special activities during the month of October to celebrate Stamp Collecting Month. As you can see by looking at our RMPL Activities Schedule there seems to be little time available on Saturdays for such events.

We will designate Saturday, October 19th as a time when you can bring your unidentified philatelic items and get help figuring out what they might be. Our "experts" will be available from 10 - 1 to help you. If you can't identify it, maybe we can.

On Saturday, October 26th there will be a special showing of the video, "The Great K&A Train Robbery". This presentation was filmed in the Royal Gorge. This is an opportunity for fun and frivolity somehow related to philately.

RMPL AT APEX

The RMPL will have a table at APEX, the annual stamp show sponsored by the Aurora Stamp Club. The show will be held on September 7th and 8th at Buckingham Mall at Mississippi and So Havana St. in Aurora. Show hours are 10 - 6 on Saturday and 11 - 4 on Sunday.

Stop by the table and say hello - better yet - stop by the table and make a purchase.

DONATIONS CONTINUE

It has been almost a daily occurrence to receive a donation of some sort of philatelic material or contributions of money. These donations range from an envelope filled with common US stamps on paper for the Kid's Corner to multiple boxes of covers, books, long runs of periodicals, auction catalogs, etc. When we started this in 1993, never did we dream that we would receive so much material as donations. We estimate that about 98% of the philatelic material in the library is here as a result of the generosity of so many different philatelists. Sometimes, we are just in awe of what we receive. Whether the donations are large or small, all of these all are gratefully appreciated and we can only hope that they continue.

During the past several months we have received donations from the following: Gary Gibson, Mary Battaia, Ernst Cohn, Ron Hill, Bob Easterly, Barbara Kean, Don Beuthel, Mexico/ Latin America Philatelic Group, Canal Zone Study Group, Tim Bartshe, Steve Schweighofer, Ed Schenck, Jack Willard, Betty Paul, Bill Dunn, Stephen Pacetti, Matt Zeringer, Mort Turner, Eddie Hackstaff, Mike Milam, TextileRama, Steve Wineter, Tom Current, Doug Crow, Colin Spong, Ruth

Willett, Dick Elliott, Bob Brown, Lee Trachtenburg, Jerry Eggleston, Art Weaver, Vi Weinman, Norm Camara, Ron Mitchell, Bob Wolf, Mort Turner, Anonymous, James Moorman, Brian Kelly, Roger Rydberg, Alex Parker, Tom Moss, Bob Ainsworth, Todd Handy, Dasa Metzler, Robin Walsh, Lil Filegar, and Jim Davenport.

Many times materials just appear on the tables or on the counters, and we have no idea who the donor might be. We thank those anonymous donors, also.

Remember that the RMPL has a 501 (C)(3) public charity status with the IRS. This means that donors of material to the RMPL may deduct the fair market value of the donated items should they choose to itemize their deductions on their income tax.

We continue to accept all types of material related to philately. If you live out of town and wish to donate, ship the items to the library. If you are in the local area bring the items to the library during our normal library hours. If you can't bring the material to the library, call at 303-759-9921 and we will try to make arrangements to pick up your donation.

RMPL SLIGHTLY AFFECTED BY T-REX CONSTRUCTION

If you use I-25 going South to get to the RMPL you should be aware that the East Evans Exit off of I-25 is closed. You will have to get off at Colorado Blvd. going South and make a left turn on to Evans going East. Other than the construction related congestion on I-25, it is still easy to get to the RMPL.

MEMBERSHIP INFORMATION

Our membership list show a very slow but steady growth. Each renewal period we lose a member or two, but generally we get more new members than we lose.

As we come into the fall season we will be making a special effort to contact philatelists who are not members of the RMPL and inviting them to make a special visit to the library to see what they have been missing. There are several thousand potential members out there in the Denver Metropolitan area. We would like to build up our membership base by convincing some of them to join. If you have philatelic friends who don't belong, we would appreciate it if you could bring them out to a program or just for a tour. Often it is that personal invitation that convinces them to become members. Just think - if every present member brought in only one new member we would double our current membership. That may be wishful thinking, but, surely we can find at least twenty or thirty new members before the end of the year.

We are pleased to report that the following people who have joined the library in the last two months:

Christian Schunck (Germany)	
Paul Markin	Ellice V. Bleak
Luis T. Gonzales-cele-Valle	
Eugene McGurer	Derrick Moss
David Thyfault	Richard Freese

Some of the members of RMPL will be receiving a first, second, or third renewal notice with this issue of the Scribblings. After the third notice members are moved to the inactive list and will no longer receive Scribblings and other membership benefits.

As you renew, remember that anything above the basic minimum membership rate of \$15 per year is considered a contribution by the IRS and may be used as a deduction when figuring your income tax. We urge that you respond promptly and generously

...What's Happening at the RMPL...

"Come and enjoy the activities"

September, 2002

Mondays	Open 10-4
Tuesdays	Open 10-4
Wednesdays	Open 10-4
Thursdays	Open 2-8
Fridays	Open 10-4
Saturdays	Open 10-4

Aug 31 - RMPL CLOSED - LABOR DAY WEEKEND

Sept 2 - RMPL CLOSED - LABOR DAY WEEKEND

Sept 4 - Meeting - Aurora Stamp Club
6:30 Trading - 7:30 Meeting and Program

Sept 7 - Meeting - 10:00 AM
Scandinavian Collector's Club

Sept 11 - Meeting - 7:00 PM
Denver Germany Stamp Club

Sept 14 - Second Saturday at the RMPL 9:00 AM
Program by Jim Kilbane
"Iowa Stampless Mail"

Sept 14 - Meeting - 10:00 AM
Mexico/Latin America Philatelic Group

Sept 14 - Meeting - 2:00 PM
Universal Ship Cancel Society
U. S. S. Colorado Chapter

Sept 21 - Meeting - 1:00 PM
RMPL Kid's Stamp Club

Sept 24 - Meeting - 7:30 PM
Rocky Mountain Stamp Show Committee

Sept 28 - Meeting - 10:00 AM
ROMPEX/RMPL Exhibiting Workshop

Sept 28 - Meeting - 2:00 PM
China Stamp Society

APEX 2002 Stamp Show

September 7 - 8, 2002

Buckingham Square Shopping Center

Saturday 10:00am - 6:00 pm

Sunday 11:00am - 4:00pm

October, 2002

Mondays	Open 10-4
Tuesdays	Open 10-4
Wednesdays	Open 10-4
Thursdays	Open 2-8
Fridays	Open 10-4
Saturdays	Open 10-4

October 2 - Meeting - Aurora Stamp Club
6:30 Trading 7:30 Meeting and Program

October 5 - Meeting - 10:00 AM
Scandinavian Collector's Club

October 5 - Meeting - 1:00 PM
Topical Philatelists In Colorado

October 9 - Meeting - 7:00 PM
Denver Germany Stamp Club

October 12 - Second Saturday at the RMPL
9:00 AM - Program by Dr. John Bloor
"Russian Air Fleet Labels"

October 12 - Meeting - 10:00 AM
Mexico / Latin American Philatelic Society

October 12 - Meeting - 11:00 AM
Rocky Mountain Aerophilatelists

October 12 - Meeting - 2:00 PM
Universal Ship Cancellation Society

U.S.S. Colorado Chapter
October 19 - Special Event - 10:00 AM - 1:00 PM

Unidentified Philatelic Item - Help Session
October 19 - Meeting - 1:00 PM

RMPL Kid's Stamp Club

October 22 - Meeting - 7:30 PM
Rocky Mountain Stamp Show Committee

October 24 - Special Event - 10:00 AM
"The Great K & A Train Robbery"

August 24 - Meeting - 10:00 AM
RMSS/RMPL Exhibiting Workshop

August 24 - Meeting - 2:00 PM
China Stamp Society

Scribblings is published bi-monthly by the Rocky Mountain Philatelic Library, 2038 So. Pontiac Way, Denver, CO 80224.

Donald G. Beuthel, Editor

The Rocky Mountain Philatelic Library is a chartered Colorado non-profit corporation. Membership subscriptions over that for the annual regular membership, and donations of appropriate philatelic materials, are deductible for U.S. income tax purposes. The RMPL is an Internal Revenue Service designated 501 (c)(3) charitable organization.

RMPL Board of Directors

President: Donald G. Beuthel Vice-President: Jim Kilbane Secretary: William S. Dunn Treasurer: Robert Blatherwick
Members at Large: Sergio Lugo - Ron Mitchell - James L. Ozment - Maury Pautz - John H. Willard