

Scribblings

...from the Rocky Mountain Philatelic Library



Vol. 10 - No. 3

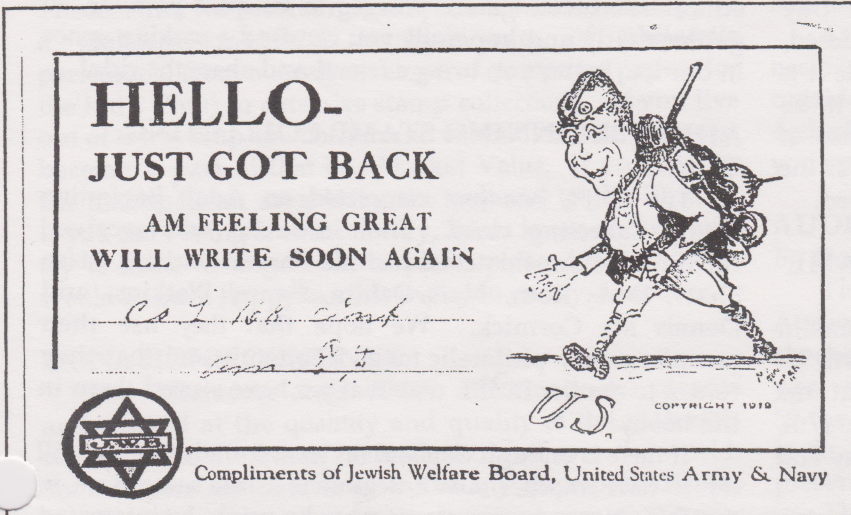
2038 So. Pontiac Way, Denver, CO 80224

May - June, 2002

www.rockymountainphilateliclibrary.com 303-759-9921 E-mail - info@rockymountainphilateliclibrary.com

JEWISH WELFARE BOARD HOMECOMING CARDS

By Sergio Lugo, RMPL Board Member



Jewish Welfare Board Homecoming Card - Front

The Jewish Welfare Board issued homecoming cards for A.E.F. troops in two varieties. They included this example, as well as the ship cards that I am having published in the form of a book. In this regard, the JWB were not unlike such organizations as the Salvation Army (whose cards carried a straightforward homecoming message), the YMCA (whose cards tended to feature a Statue of Liberty homecoming message), or the Knights of Columbus (whose cards tended to feature whimsical/humorous homecoming themes).

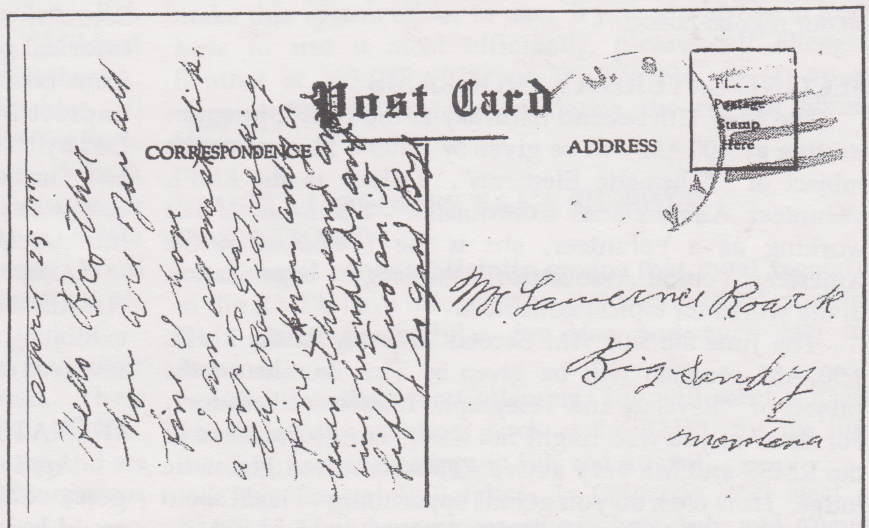
This example was the cornerstone of the forthcoming publication, and reflects what the clues found on postal stationery items can lead to when merged with historical interest, the availability of reference works, and an

inquisitive approach to novel items. The same image of the soldier (in Figure 1) has also been observed on large sized mailing labels affixed to boxes. Measuring approximately 4% by 3%, those labels read: „Hello Yank; Compliments of the Jewish Welfare Board; Always at Your Service; Philadelphia, Headquarters; 1616 Master Street%.

In this instance the front of the card, forwarded by the brother of Mr. Lawrence Roack of Big Sandy, Montana showed that the writer was a member of Co. L of the 168th Infantry. A review at the Rocky Mountain Philatelic Library of Theo Van Dam's book THE POSTAL HISTORY OF THE A.E.F., revealed that the 168th Infantry was a unit of the famed 42nd Infantry (the Rainbow) Division.

But more was to be revealed by the cancellation on the reverse.

The mute cancellation shown here (that is the U.S. Navy cancellation) proved decisive. Specifically, such mute cancellations were used by the Navy in order to avoid identifying ships in the event of their sinking. I had, somewhere along the line, learned that the 42nd Infantry Division had been transported in its entirety back to the United States aboard the USS Leviathan. If that were the case, then the mute cancellation must have been applied by the ship's post office on board the Leviathan. The Leviathan must somehow have been in the service of the United States Navy. Following that reasoning, I decided to check the RMPL's holdings of the DICTIONARY OF AMERICAN FIGHTING SHIPS. Sure enough, there was the entry for the Leviathan, providing in some detail the



Jewish Welfare Board Homecoming Card - Back

events surrounding her service in the United States Navy.

As I have since learned from that clue, there was a good likelihood that the ships on the JWB ship cards that I had begun to acquire would also have been presented in the pages of the **DICTIONARY**. There again, my suspicions were confirmed - of the 58 ships depicted on JWB cards of the First World War, approximately 50 of them were described in terms of their service to the United States during the War. The results of the clues provided by this one card acquired slightly more than a year ago could never have been anticipated - but those results will soon be evident in the form of a 135 page book, illustrating the ships and their histories of a nearly century ago bygone era that will serve as a fitting tribute to the little known story of nearly 150,000 Jews (three of whom were honored with the Congressional Medal of Honor) who served in the A.E.F. in the War to End All Wars.

News From the RMPL...

RMPL CLOSED

The RMPL will be officially closed on Saturday, May 25th and Monday, May 27th for the Memorial Day weekend. As often happens when we are closed, Volunteers show up to catch up on their work while it is quiet and there are no interruptions. Should it be necessary for you to use the library facilities on one of these days please call ahead and see if anyone is at the library and planning to stay for the time that you need.

RMPL WILL BE AT ROCKY MOUNTAIN STAMP SHOW 2002

The RMPL will have a table at the Rocky Mountain Stamp Show (formerly called ROMPEX) which will be held at the John Q. Hammons Trade Center at the Holiday Inn at I-70 and Chambers Road on May 17th, 18th and 19th. The show hours are 10 - 6 on Friday and Saturday and 10 - 4 on Sunday.

The RMPL Annual Silent Auction will be held during the show. As most of you will remember items for the Silent Auction are donated for this event. Over the past few years we have been pleased that the auction brings in enough money to fund the library for one month. We are hopeful that this will be true this year, also.

Please make an effort to get out to the show and to stop by the RMPL table to bid high and often on the auction lots, and to say hello.

During the RMSS the RMPL will be operating as usual on our regular hours.

SECOND SATURDAY PROGRAMS

The May 11th Second Saturday at the RMPL program starting at 9:00 AM will be given by Dalene Thomas on the subject of "Thematic Elements". Dalene is the RMPL Volunteer Audio-Visual Coordinator. When she is not working as a Volunteer, she is the President of the American Topical Association - the largest organization in the world for topical collectors.

The June 8th 9:00 AM Second Saturday at the RMPL 9:00 AM program will be given by Tim Bartshe on the subject of "Revenue and Telegraph Philately of Ecuador". For those of you who might not know, Tim is President of the RMSS and is a very active APS Accredited Philatelic Judge. How often do you get the opportunity to learn about this subject? Better make plans to attend!

All members and interested collectors are urged to participate. As usual the coffee pot will be "perking" and

the donut fairy is expected to make an appearance. Hopefully you will make an appearance, also. These educational meetings are proving to be quite popular, so get here early and hopefully you can find a parking space in our lot. Better yet, bring a friend and share the ride!

ADULT BEGINNING STAMP COLLECTING CLASS

The RMPL has just completed an Adult Beginning Stamp Collecting class. The Graduates who received certificates from this class include Forrest Carhart, Lissa Shaw, Doris Roth, Nate Dahlin, Benny Watkins, and Dennis Mc Cormick. We hope that they use their complimentary philatelic tongs frequently and that they return to use the RMPL now that we have started them in the hobby.

If there is enough demand (at least 5 students) we will try to have another Adult Beginners Class some time in the Fall. If you know of anyone who might be interested taking the class at that time, please have them call the RMPL at 303-759-9921 to indicate their interest and we will contact them after dates have been set. Remember this is very basic and is really for the beginner with little or no knowledge if the hobby.

EXHIBIT SEMINAR

The exhibiting seminar, sponsored jointly by the RMPL and RMSS, continues to be held every fourth Saturday of each month from 10:00 AM until ? This very informal get together deals with every facet of exhibiting from how to get started, beginning principles, to how to improve my exhibit, to advanced exhibiting techniques. Led by National and International exhibitors, Greg Frantz and Tim Bartshe, it brings together advanced and beginning collectors sharing pages from collections and turning them into pages of exhibits to be shared by all.

Also, there is so much to learn about the new classifications in exhibiting. If you have ever thought of exhibiting, or even wanted to know more about what is involved with exhibiting, come and join in on the fun.

DONATE TO THE RMPL

April 15th - that dreaded IRS day - has come and gone. This should have reminded many of us that we could have lowered our tax bill by donating to the RMPL. The RMPL accepts literally anything related to the hobby of philately. Some of the donated material can be

put on the library shelves for philatelic research. We try to sell duplicate material to help to keep the RMPL financially solvent. If we can't sell we try to find a good home for it - sharing with other philatelic libraries or donating it to interested individuals. We really try to find a use for all donated materials.

The RMPL maintains a 501 (c)(3) public charity status with the IRS. This means that the fair market value of the material donated may be taken as a deduction on your income tax if you itemize deductions. Donate before December 31, 2002 and pay less on April 15, 2003.

Many of you probably don't realize that about 99% of the material in the RMPL is there because some philatelist was generous enough to ship it to the RMPL. The material we receive ranges from an individual copy of a philatelic magazine to long runs of philatelic periodicals; from a small envelope of stamps on paper (for the Kid's Club) to extensive stamp collections. If you live out of town, ship the donation to us and the shipping cost becomes a part of that Fair Market Value. If you live in the metropolitan area, bring the material to the library. If you can't bring it to the library, let us know and we will try to make arrangements to pick up the donation. We would be most happy to work with you on any donations.

DONATIONS CONTINUE

The Volunteers at the RMPL continue to be pleased and amazed at the quantity and quality of the materials we receive as donations - actually from all over the world. Some donors are new to us and many are repeat donors. Hardly a day passes that we don't receive something new and different. It is this wonderful attitude of sharing that has made the RMPL a success. We never could have been able to go out and buy what has been donated. We truly appreciate your generosity and we hope that each of our donors has the opportunity to see in person what they have helped to build and to use our facilities for some philatelic research.

During the past several months we have received donations from the following persons: Kenton Forrest, Jack Wuillard, Betsy & Chuck Berry, Don Finley, Bob Ainsworth, Edward J. Gwinn, Nancy Thies, Mildred Clark, Paul Albright, Dick Axtell, Jim Winder, Robert L. Brown, Alex Parker, Bill Dunn, Daniel Meschter, Vi Weinman, Carl Anderson, Herman Axelrod, Tom TenEyck, Dave Capra, Don Beuthel, Steve Wineteer, Joseph Cameron, Joe Foley, Mort Turner, Dalene Thomas, Roger Rydberg, Ken Lewis, Jim Davenport, Jack B. Weil, Silviu Landman, Roger Cichorz, Mr. & Mrs. Brian Kenny, Ward Crowley, Bob Gibson, David Heflin, John Bloor, Glen McDonald, and Tom Crawford.

We thank each and every one of them for their generous donation, whether it be large or small. These donated materials mean so much to the RMPL. Unfortunately some material just seems to show up and we do not know who donated it. We thank those anonymous donors, also.

MEMBERSHIP INFORMATION

During the past two months the following persons

have made the wise decision to join the Rocky Mountain Philatelic Library:

Craig Gardiner Alex Parker
David L Heflin Gerald Crager

We are pleased to receive them as members of the group and urge that they avail themselves of the opportunities that the RMPL offers. They will be receiving their membership cards with this mailing, as will those members who have renewed since the last mailing.

Some of you will be receiving a first, second, or third renewal notice with this issue of the Scribblings. After the third notice members are moved to the inactive list and will no longer receive Scribblings and other membership benefits.

As you renew, remember that anything above the basic minimum membership rate of \$15 per year is considered a contribution by the IRS and may be used as a deduction when figuring your income tax. We urge that you respond promptly and generously.

AUDIO VISUAL DEPARTMENT GROWING

By Dalene Thomas, RMPL Volunteer

There have been over 23 trays of slides added to the Audio Visual department of the library. If you have not checked these out yet, be sure that you do the next time you visit the library. These new additions bring to about 50 the number of different slide programs available. This is in addition to trays of train slides, several video presentations and a few computer programs.

The new programs include several topics relating to Germany in World War II, Zeppelin mail, and other country collections. These slides are great for research or for club programs though not all of them include scripts.

NEED HELP IN LOCATING RMPL MATERIALS?

by Ellengail Beuthel - RMPL Librarian

As previously mentioned in the Scribblings, the RMPL no longer has a card catalog. The computer must now be used to access materials. There are many techniques that make this system easier to use. If you would like to learn how to use it most efficiently, please call Ellengail Beuthel at 303 755 9328, or 303 759 9921 to set up an appointment for instruction during the regular library hours.

SEVERAL GROUPS TAKE SUMMER VACATIONS

Several of the philatelic groups that meet regularly at the RMPL have informed us that they will be changing their meeting schedules for May and even into the Summer.

The Scandinavian Collectors Club will meet at RMSS for their May meeting; back at the RMPL for the June meeting; and no meetings in July and August.

The Topical Philatelists In Colorado will meet at RMSS in May; have no meeting in June, July and August; meet at APEX in September.

The RMPL Kids Stamp Club will not meet until

September.

The China Stamp Society will not meet in May because of the Memorial Day weekend and will meet in June as regularly scheduled

The RMSS Committee will not meet in May, will meet in June, will not meet in July, and will resume their normal monthly schedule with the August meeting.

To the best of our knowledge the rest of the normally scheduled meetings will meet as usual.

THE LOTTERY AND THE RMPL

There is an opportunity for those of you who regularly participate in the Colorado Lottery to help the RMPL at the same time. On June 29th there will be a drawing where 5 non-winning Lottery Scratch tickets will be drawn and the 5 qualified non-profit organizations listed on those tickets, as well as the individuals who submitted

those tickets, will win cash prizes. You do not have to be present to win.

How do you get those non-winning tickets into the drawing?? Between April 5th and May 24th, special Lottery drop boxes will be located across Colorado in participating Albertsons, Kings Soopers, Safeway, Cub Foods, City Markets, Big Kmart and Super Kmart. Players collect ANY non-winning Colorado Scratch game tickets, write their name, phone number, the name of their favorite non-profit group on the back, then drop the tickets in the boxes. I supposed that crossing your fingers as you deposit the tickets won't really help, but the RMPL could win as much as \$10,000. If you play anyway, why not try to win something for the RMPL with those non-winning Lottery scratch tickets instead of throwing them away!

...What's Happening at the RMPL...

"Come and enjoy the activities"

MAY, 2002	JUNE, 2002
Mondays..... Open 10-4	Mondays..... Open 10-4
Tuesdays..... Open 10-4	Tuesdays..... Open 10-4
Wednesdays..... Open 10-4	Wednesdays..... Open 10-4
Thursdays..... Open 2-8	Thursdays..... Open 2-8
Fridays..... Open 10-4	Fridays..... Open 10-4
Saturdays..... Open 10-4	Saturdays..... Open 10-4
May 1 - Meeting - Aurora Stamp Club 6:30 PM Trading - 7:30 Meeting and Program	June 1 - Meeting - 10:00 AM Scandinavian Collectors Club
May 2 - Meeting - 7:00 PM - RMPL Board	June 5 - Meeting - Aurora Stamp Club 6:30 Trading - 7:30 Meeting and Program
May 8 - Meeting - 7:00 PM Denver Germany Stamp Club	June 8 - Second Saturday at the RMPL - 9:00 AM Program by Tim Bartshe on "Revenue and Telegraph Philately of Ecuador"
May 11 - Second Saturday at the RMPL - 9:00 AM Program by Dalene Thomas on "Thematic Elements"	June 8 - Meeting - 10:00 AM Mexico/Latin America Philatelic Group
May 11 - Meeting - 10:00 AM Mexico/Latin America Philatelic Group	June 8 - Meeting - 11:00 AM Rocky Mountain Aerophilatelists
May 11 - Meeting - 2:00 PM Universal Ship Cancel Society - U.S.S. Colorado Chapter	June 8 - Meeting - 2:00 PM Universal Ship Cancellation Society - U.S.S. Colorado Chapter
May 17, 18, and 19th - Rocky Mountain Stamp Show Holiday Inn, Chambers & I-70	June 12 - Meeting - 7:00 PM Denver Germany Stamp Club
May 25 - RMPL CLOSED	June 22 - Meeting - 10:00 AM ROMPEX/RMPL Exhibiting Workshop
May 27 - RMPL CLOSED	June 22 - Meeting - 2:00 PM - China Stamp Society

Scribblings is published bi-monthly by the Rocky Mountain Philatelic Library, 2038 So. Pontiac Way, Denver, CO 80224.

Donald G. Beuthel, Editor

The Rocky Mountain Philatelic Library is a chartered Colorado non-profit corporation. Membership subscriptions over that for the annual regular membership, and donations of appropriate philatelic materials, are deductible for U.S. income tax purposes. The RMPL is an Internal Revenue Service designated 501 (c)(3) charitable organization.

RMPL Board of Directors

President: Donald G. Beuthel Vice-President: Jim Kilbane Secretary: William S. Dunn Treasurer: Robert Blatherwick
Members at Large: Sergio Lugo - Ron Mitchell - James L. Ozment - Maury Pautz - John H. Willard