

# Scribblings



---from the Rocky Mountain Philatelic Library

Vol. 4 - No. 3

2038 So. Pontiac Way, Denver, CO, 80224

September 1996

## WHAT'S HAPPENING at the RMPL

*"come and enjoy the activities"*

### OCTOBER 1996

Mondays: October 7, 14, 21, 28 Open 10 - 4  
Thursdays: October 3, 10, 17, 24, 31 Open 2 - 8  
Saturdays: October 5, 12, 19, 26 Open 10 - 4  
October 5 - **Stamp Collecting Month Activity**  
**Kids Day at the RMPL - 10 - 12**  
October 10 - Meeting - 7:30 PM  
**Topical Philatelists In Colorado**  
October 12 - **Stamp Collecting Month Activity**  
Bill Dunn - 10 - 12  
October 19 - **Stamp Collecting Month Activity**  
Jack Willard - 10 - 12  
October 22 - Meeting - 7:30 PM  
**ROMPEX Committee**  
October 26 - **Stamp Collecting Month Activity**  
Area Stamp Club Visitation Day - 10 - 12

## **EVERYONE HAD A GOOD TIME**

August 3, 1996 was a very important day in the history of the Rocky Mountain Philatelic Library. That was the beginning of a new era for the RMPL. The Grand Re-opening ceremonies started with some brief introductory remarks by RMPL President, Don Beuthel. A brief history of the RMPL was given by RMPL Treasurer, Bob Blatherwick. RMPL Secretary, Bill Dunn reviewed the financial picture of the RMPL. RMPL Board Member, Jack Willard thanked the many volunteers who worked to remodel the building, moved the library material including 300+ boxes from storage, unpacked the boxes and got the material on the shelves. All of this was completed in a little over 60 days. A list of those volunteers will appear in this issue.

Approximately 70 guests were in attendance as the ceremonial ribbon of coil

stamps was cut to proclaim that the RMPL was back in operation. Those honored to "cut the coil" were Denver Postmaster Mike Flores, RMPL Librarian Ellengail Beuthel, and RMPL Board Member Jack Willard. The cutting ceremony was followed by brief remarks by Postmaster Mike Flores. He expressed amazement at what had

been accomplished and promised that the USPS will help the RMPL in any way possible.

The guests toured the facility and enjoyed the fine refreshments provided by Sue Dunn, Ellengail Beuthel, Thelma Willard, Pam Lugo, Edna Wright, and Anna Frantz.

The Open House on Sunday, August 4th was attended by approximately 30 guests who enjoyed the refreshments and the social atmosphere of the facility. On both days, many persons in attendance had not been to the library previously and were amazed at the collection of philatelic materials as well as the newly renovated building.

## **THANKS - THANKS - THANKS - THANKS THANKS !!!!!**

The people listed on the following list helped with getting the RMPL open as soon as it was. They may have helped with the remodeling - tearing out walls, building new walls, dry walling, washing and painting ceiling grids, painting walls, re-wiring, installing new fixtures, etc. They may have helped to move the sign, or move the boxes, or move the counters, desks, or shelves. They may have helped to assemble the new shelves or they may have unpacked the boxes and put materials on the shelves. They may have pulled weeds. They may have swept the floor - it seems as if it had to be swept a hundred times. Some of them did all of those things. It seemed like a few of them were living in the building - they were there so much. Most noteworthy were Steve Schweighofer, George Snyder, Cliff Lushbough, Maury Pautz, and Wayne Anderson. Hopefully we haven't left somebody off of the list, but if we did please let us know. Your help was appreciated just as much and we apologize for the oversight. All of you helped to make some dreams come true and we don't know how to thank you enough.

Sue Anderson

Don Beuthel

Bob Blatherwick

John Broberg

Dave Capra

Bill Dunn

Greg Frantz

Jim Kilbane

Sergio Lugo

Ron Mitchell

Maury Pautz

Wayne Anderson

Ellengail Beuthel

Carol Blatherwick

Muriel Burke

Bill Crabbs

Jerry Eggleston

Howard Fritsch

Don Lovelace

Cliff Lushbough

Jim Ozment

Roger Rydberg

|                    |               |
|--------------------|---------------|
| Steve Schweighofer | Dan Sedillo   |
| Dick Smith         | George Snyder |
| Sherri Soraci      | Louis Svoboda |
| Dalene Thomas      | Joe Weinman   |
| Jack Willard       | Edna Wright   |
| George Wright      |               |

They will be receiving a Certificate of Appreciation for their efforts on behalf of the RMPL in the very near future.

Very special thanks should go to Lewis Bussey, architect, for drawing the plans for the remodeling; to Joe Crosby and Cities Service Oil for donating our new furniture and shelving; to Arapahoe Community College for the use of a truck used in moving; to Bob Vessa Plumbing for donating materials and labor; to Mike Stone, our realtor who helped to find the building and hammer out the deal; to Steve Nadler for giving us such a good deal on the over 50 gallons of paint and all of the painting supplies; and last, but not least, to Dave Capra for letting us use the storefronts to get started, the RMPL sign on the front of the building, and for providing the storage space while we were closed. To all of you, your help is sincerely appreciated.

While we are doing "thank yous" we should not forget the group of people who have helped recently to make the financial picture a little brighter by donating money. I hope that all of you have received a letter thanking you for your monetary help. If not, I'm sorry but we do sincerely appreciate your assistance. Remember that we are a 501 (c)(3) public charity and your donations are deductible on your income tax within the limits of the law. Additional monetary donations are encouraged and would be gratefully accepted.

Now that the RMPL has a reasonable degree of permanence, we suggest that you include the RMPL in your will. Bequests are a viable means to help keep the RMPL in operation. We would be most happy to discuss the matter with your attorney at any time.

## NEW RMPL MEMBERS

One of our immediate goals is to increase the membership of the RMPL. We need your help in doing this. Encourage your philatelic friends to visit the library and once they see what we are doing, I'm sure that they will want to become a member.

Recent new members include:

|                |                 |
|----------------|-----------------|
| Howard Fritsch | Darlene Worsham |
| Maury Pautz    | Dick Smith      |
| Mildred Clark  | Roger Perdue    |

## OCTOBER IS STAMP COLLECTING MONTH

You may have noticed in our activities calendar that we have special activities on the Saturdays through the month of October. These activities are our way of celebrating Stamp

Collecting Month. We hope that all of our members will participate in one or more of these events.

Saturday, Oct. 5th is designated as "KIDS DAY AT THE RMPL". Please encourage any of your children, grand children, or neighbor's children to attend if they have an interest in stamp collecting. The hours are from 10 - 12 noon. There will be door prizes, free stamps, demonstrations, refreshments, and a philatelic video to watch. Call 755-9328 to attend.

On Saturday, Oct. 12th Bill Dunn will give a slide program at 10 AM, "Philately In Slices". Everyone is invited to attend.

On Saturday, Oct. 19th Jack Willard will give a program at 10 AM, "A View to Old Colorado". He will show slides of postmarks and old post cards views. Again, everyone is invited to attend and enjoy a look at the past.

Saturday, Oct. 26th has been designated as "Stamp Club Visitation Day" starting at 10 AM. Letters are being sent to all philatelic clubs in the area encouraging their members to visit the library on that day. Special events include displays of very old stamp literature, door prizes, and a mini-auction of donated items. The stamp club having the largest number of members in attendance will receive a prize.

## SATURDAY MORNINGS AT THE RMPL

Saturday mornings seem to be the day when many people have a few free hours and tend to congregate at the library to have a cup of coffee and "shoot the breeze" about stamp collecting in general - maybe even brag a little about a recent acquisition. Why don't you take time on a Saturday for a little philatelic socialization. The RMPL is the place. The Saturday hours are from 10 - 4 but there is usually some one there to put on the coffee pot at about 9 AM. We hope to see you there.

## RMPL MEMBERSHIP RENEWAL DATES

Basically the method that we felt would be the most fair was - if you had 5 months left on your membership when the RMPL closed at the end of January, 1995, you will have 5 months left on your membership starting August 1, 1996. That is how the new expiration date will be determined. Members will receive a new membership card with the next issue of *Scribblings*. The new membership expiration date will appear on this card.

We sincerely hope that you will choose to renew your membership at the time of expiration and we thank you for your patience while we were closed. Come and use the facility. I'm sure you will feel that your membership is a valuable asset in your philatelic pursuits.

## NEW BOOKS

The following are from the new **Western History Collection** provided by John H. Willard. Stop by and view the entire collection.

**COLORADO MIDLAND RAILWAY**, By Dan Abbott  
Autographed First Edition

**DENVERS RAILROAD'S**, By Keton Forrest and Charles Albi

The **GILPIN GOLD TRAIN**, By Mallory Hope Ferrell  
**MARSHALL PASS - Denver and Rio Grande Gateway to the Gunnison Country**, By Walter R. Borneman

The **PIKE'S PEAK COG ROAD**, By Morris Abbott  
Autographed First Edition

**RIO GRANDE - Mainline Through the Rockies**, By Lucius Beebe and Charles Cleeg  
First Edition

<http://www.>

by Iona Macintosh

### Good News-Great News

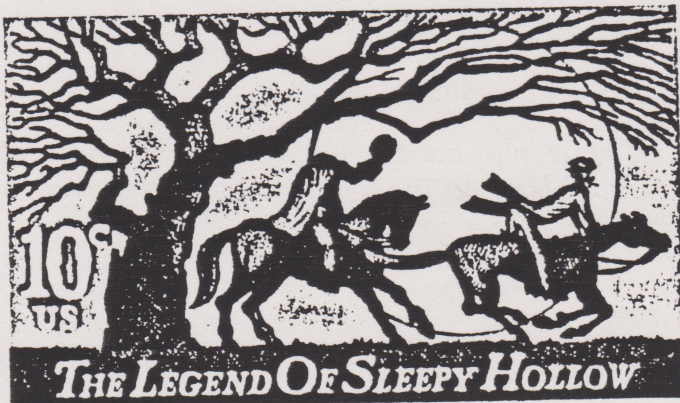
The RMPL is on the WEB- or shortly will be. Check out the beginnings of our home page at:  
<http://www.collectorsmall.com/philib/RMPL.htm>  
Please send your responses to [RMPL@aol.com](mailto:RMPL@aol.com)

Congratulations to the respondents of our first column. First to reply was John Dziadecki, second was Rusty Morris, and third was an old friend Charles McClure. Rusty received his prize at the RMPL grand opening celebration. If John and Charles will forward a snail mail address to Iona your prize will follow. You may contact Iona at [RMPL@aol.com](mailto:RMPL@aol.com)

### HOT SITE OF THE MONTH

**Michelle's Mailbox Pages** - Photographs of unique mailboxes in South Dakota.

<http://www.dsu.edu/~behnkem/mbox>



"BOY! YOU'D THINK I SNEEZED ON YOU INSTEAD OF YOUR DUMB OLD STAMP COLLECTION!"

Taken from "The Chieftain"  
Pueblo, Colorado 11/17/1992

**Scibblings** is published bi-monthly by the Rocky Mountain Philatelic Library, 2038 So. Pontiac Way, Denver, CO, 80224.

**Donald G. Beuthel**  
Editor

The Rocky Mountain Philatelic Library is a chartered Colorado Non-profit corporation. Membership subscriptions over that for the annual regular membership, and donations of appropriate philatelic library materials are deductible for U.S. income tax purposes. The RMPL is an IRS designated 501(c)(3) charitable organization.

### RMPL BOARD OF DIRECTORS

|                |                    |
|----------------|--------------------|
| President      | Donald G. Beuthel  |
| Vice-President | Jim Kilbane        |
| Secretary      | Bill Dunn          |
| Treasurer      | Robert Blatherwick |
| Board Member   | James L. Ozment    |
| Board Member   | John H. Willard    |